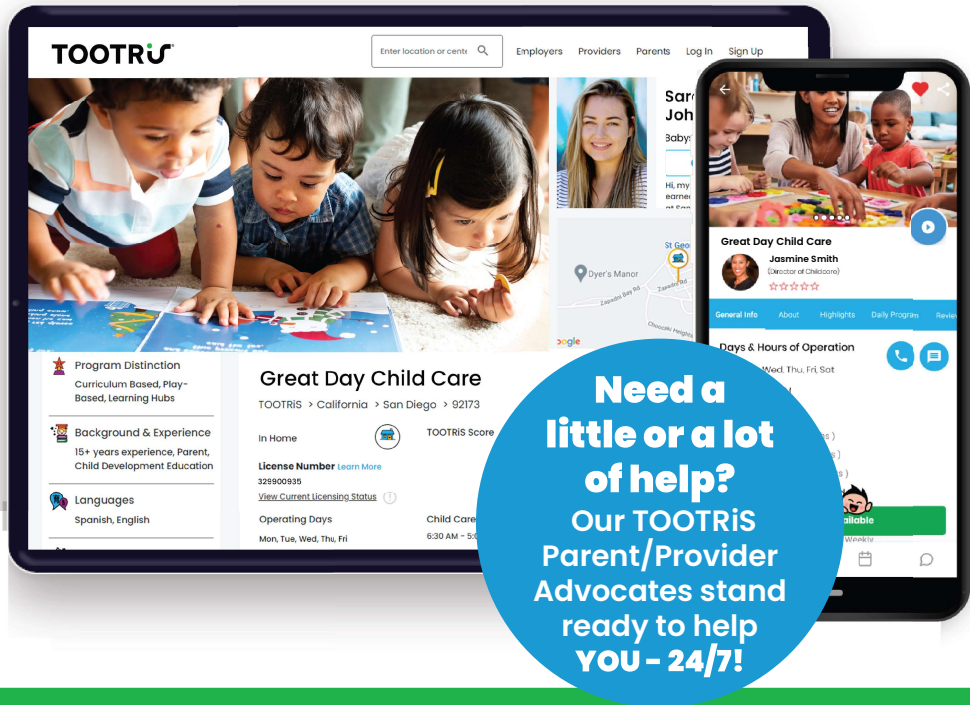
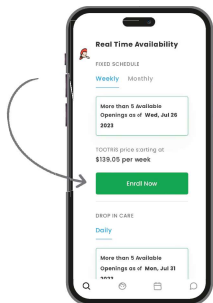


With your new *Municipal Child Care Benefit Pilot Program*, your Child Care provider will automatically receive 100% of the payment from your benefit. If they do not currently have an enrollment ready TOOTRiS profile, it's easy to refer them. There is no charge or fee for them to join the program.



Is Your Child Care Provider Ready?

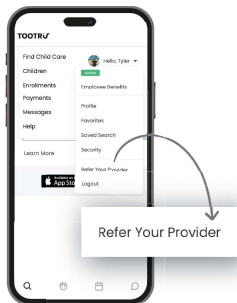
To use your Child Care Benefit, your provider's TOOTRiS profile must be 100% ready to process payments. To quickly check on their enrollment ready status, follow the steps below.



Search Your Provider to Enroll

If your provider's profile shows an 'Enroll Now' button, you're set - you can begin enrolling.

If you can't find your provider or their profile is not ready to enroll, refer them to our TOOTRiS Parent/Provider Advocates and they will do the rest!



Refer Your Provider

If your provider does NOT appear or you can't enroll, refer them at [TOOTRiS.com/refer](https://tootris.com/refer)

Please let your provider know that TOOTRiS will be contacting them about your new *Municipal Child Care Benefits* to assist them with anything they need.

Gain Greater Freedom, Flexibility & Peace of Mind with TOOTRiS!

- TOOTRiS automatically manages your City of San Diego *Municipal Child Care Benefit*, so no paperwork is needed
- Access your dedicated Child Care benefit dashboard from any device 24/7 to track and manage payments
- Enroll in real-time or up to 12-months in advance
- Access your multiple payment sources to pay for Child Care, including benefit funds, DCFSAs, credit/debit card, credit/savings accounts, and others

The TOOTRiS Advocate Team is here to support your every need!
Call us anytime at (619) 815-5702 or email citysd@tootris.com
Tambien hablamos Español