



Redistricting Commission Basics

www.sandiego.gov/redistricting-commission





6 Things to Consider When Redrawing the Lines

1 Equal Population

Each Council District should contain roughly 1/9 of the city's population.

2 Contiguity

Council Districts should be composed of contiguous territory.

3 Geographically Compact

Council Districts should be geographically compact so nearby areas of population aren't bypassed for more distant populations.

4 Communities of Interest

Council Districts should try to preserve communities who have similar legislative concerns who could therefore benefit from cohesive representation.

5 Reasonable Access

Council Districts should provide reasonable access between population centers.

6 Natural Boundaries

Council Districts should be bounded by natural boundaries, street lines and/or City boundary lines.



Deviation from Ideal District Size Based on 2020 Census Data (Using DistrictR Mapping Tool)

The following table is based on the California Statewide Database 2020 Census data released on September 20. The population totals and deviations from the ideal 1/9th of the city population were obtained from the Commission's DistrictR mapping tool.

San Diego City Council Districts - Demographic Information NOTE: California Statewide Database 2020 Census Population Counts Counts Extracted from DistrictR Mapping Tool

2020 CA Statewide Database (as tallied from DistrictR application)

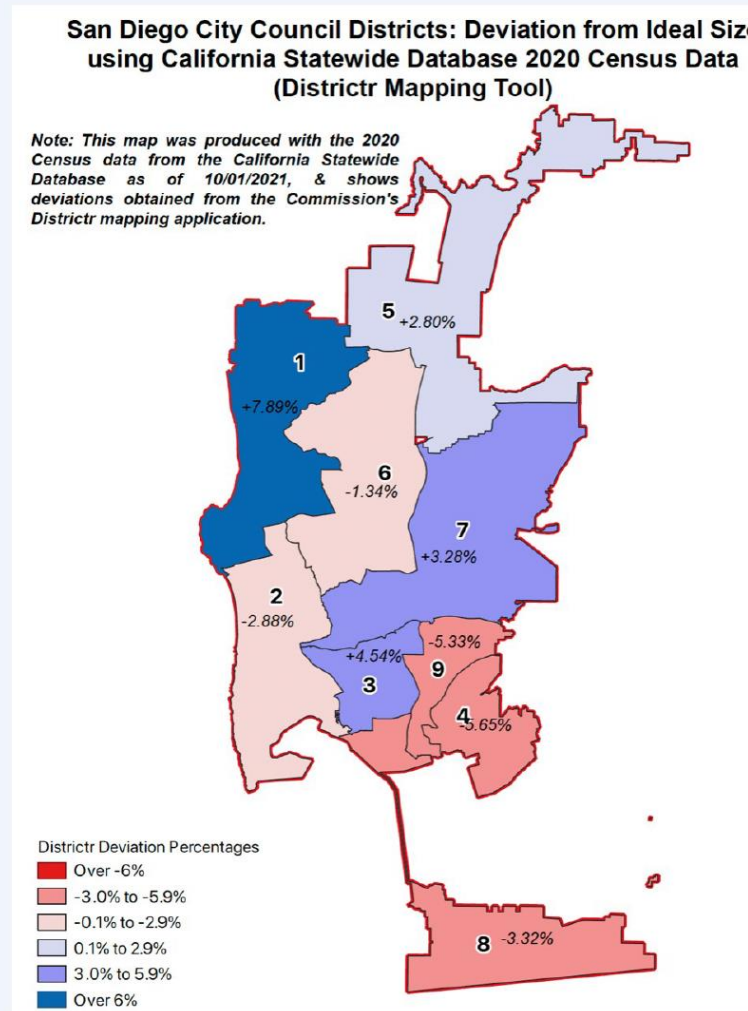
Total Population	Deviation	% Deviation	Pop. Change Since 2010 Census	
1	166,620	12,187	7.89%	18,939 12.8%
2	149,985	(4,448)	-2.88%	7,797 5.5%
3	161,448	7,015	4.54%	13,979 9.5%
4	145,708	(8,725)	-5.65%	2,932 2.1%
5	158,760	4,327	2.80%	14,391 10.0%
6	152,358	(2,075)	-1.34%	12,064 8.6%
7	159,500	5,067	3.28%	12,428 8.5%
8	149,313	(5,120)	-3.32%	4,458 3.1%
9	146,204	(8,229)	-5.33%	1,291 0.9%
Total	1,389,896			88,279 6.8%
Divided by 9	154,433			

Largest Positive Population Deviation: 7.89% (District 1)
Largest Negative Population Deviation: 5.65% (District 4)
Total Deviation 13.54%

Source: California Statewide Database data as of September 24, 2021, within DistrictR application.

To submit your feedback and to draw your ideal community boundary lines, please go to <https://bit.ly/sdmapping>. To learn more about the City of San Diego Redistricting Commission, please visit www.sandiego.gov/redistricting-commission. If you have questions or need translation services, please email redistricting2020@sandiego.gov (3) three business days in advance.

The following map is based on the California Statewide Database 2020 Census data as described in the previous slide. This map simply provides a rough estimate of which districts *might* need to grow in size, and which *might* need to shrink in order to get closer to the ideal one-ninth size.



How would you draw the new City Council districts? To submit your input and to draw your ideal community boundaries, please go to: <https://bit.ly/sdmapping>. If you have questions or need translation services, please email redistricting2020@san Diego.gov (3) three business days in advance.

New Districtr Mapping Tool Now Available - with 2020 Census Data

- ▶ Draw your districts and instantly see population size and racial composition information change as you draw them.
- ▶ Current Council Districts, Community Planning Group Areas, neighborhood and School District boundaries are provided to help you navigate the map - but you do not need to use these boundaries to create your own map.
- ▶ Save your maps as a web bookmark, share them with friends and community members, and when complete submit them to the Commission for consideration.
- ▶ Video tutorials showing how to use Districtr are on the website.

New Districtr Mapping Tool - Introduction

Redistricting Commission

Redistricting Commission Home | Map Your Own Districts | Meet the Commissioners | Participating During COVID | Meetings | Calendar | Current Maps

Map Your Own Districts

A link to our new [redistricting mapping tool](#) is available!

Population Balance

① Uses 2020 Decennial Census data on 2020 Blocks.

166,413
149,653
161,843
144,976
158,511
152,076
159,168
148,789
145,525
Ideal: 154,106.33

UNASSIGNED POPULATION: 3
MAX. POPULATION DEVIATION: 7.99%

Highlight unassigned units

Before you start creating your new City Council districts, please read the information below:

The redistricting mapping tool allows you to create your own map of new City Council districts using 2020 census data. The tool allows you to see how many residents are assigned to each district that you create and

Please go to our website at <https://www.sandiego.gov/redistricting-commission>

and click on the “Map Your Own Districts” tab to read the introduction to the new mapping tool first.

Then use the link at the top of the page to directly access the Districtr redistricting mapping tool (<https://bit.ly/sdmapping>)

New Districtr Mapping Tool - Sample Screens

Let your voice be heard as we prepare to redraw the nine City Council districts to ensure fair and equitable representation across the City of San Diego.

This process takes place independently of the Mayor and City Council through the City of San Diego Redistricting Commission, a nonpartisan group of nine volunteers, one from each of the Council Districts. Use this portal to submit public comments to the Commission, and tell them what is important to know as they draw the new Council District lines!

You can provide your thoughts to the Commission by providing written testimony, by drawing your own districting plan (partial or whole), or by submitting a community of interest map.

What is...

Written Testimony

a Districting Plan

A Community of Interest (COI)

Districting plans are maps that define the borders of the nine San Diego City Council districts. These district boundaries determine how you and your community are represented in the City Council. Our redistricting rules include requiring very close to equal population per district (One Person, One Vote) as well as rules providing opportunities for minority groups to elect candidates of choice (the Voting Rights Act). Additionally, the council districts should be reasonably shaped (compact), each district should be one connected piece (contiguous), communities of interest should be preserved as much as possible, and districts should be bounded by natural boundaries, street lines, and/or City boundary lines.

For more information on drawing districts, jump to [How to Draw a Map](#)

Intro to Redistricting (5 mins)



Please go to <https://bit.ly/sdmapping> to access the Districtr Mapping Tool

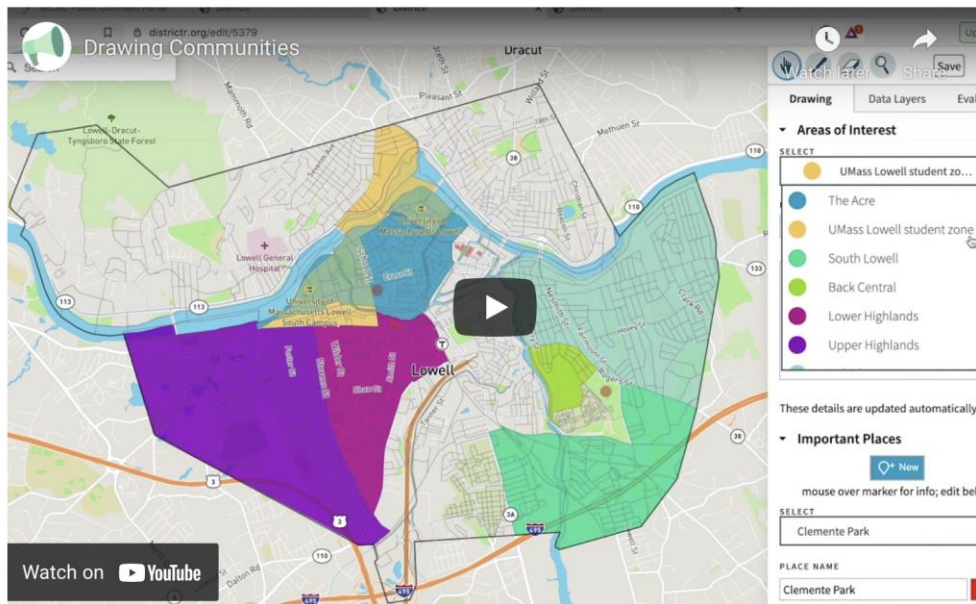
New Districtr Mapping Tool - Sample Screens

How to Draw a Map

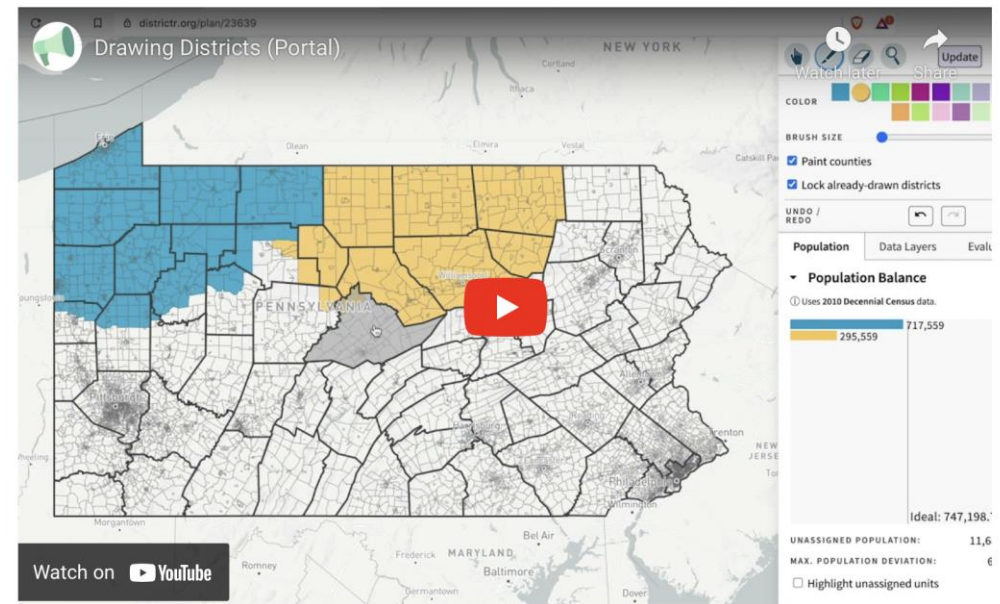
You can use [Districtr](#) to draw your plan or your Community of Interest. Districtr is free, open-source software designed just for public input in the redistricting process. When you've drawn your map, click the "Save" button and you'll find a submission link that will take you back to this form with your mapping data pre-filled.

Need help getting started? Here are some video tutorials.

Drawing Communities (5 mins)

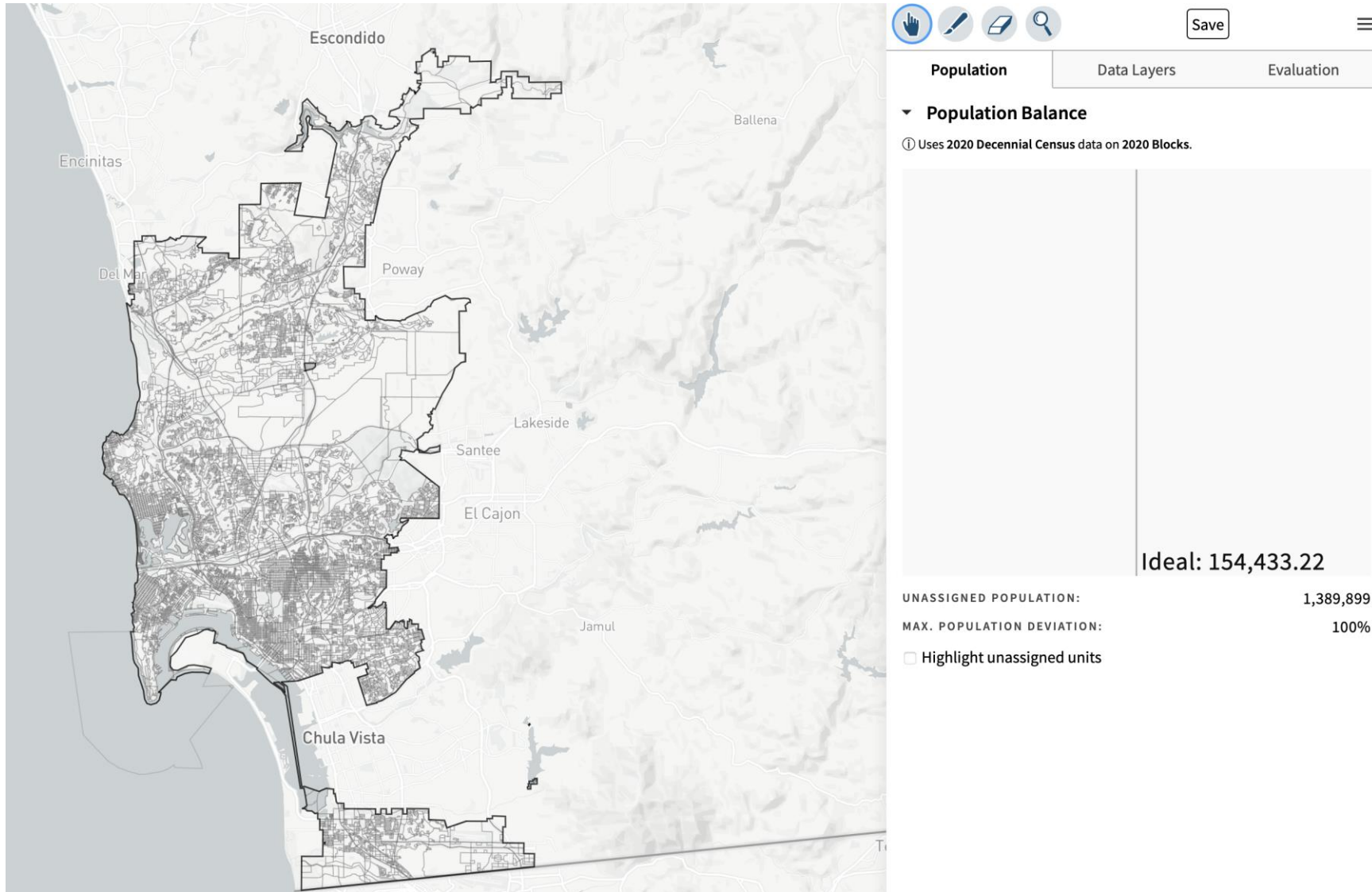


Drawing Districts (5 mins)



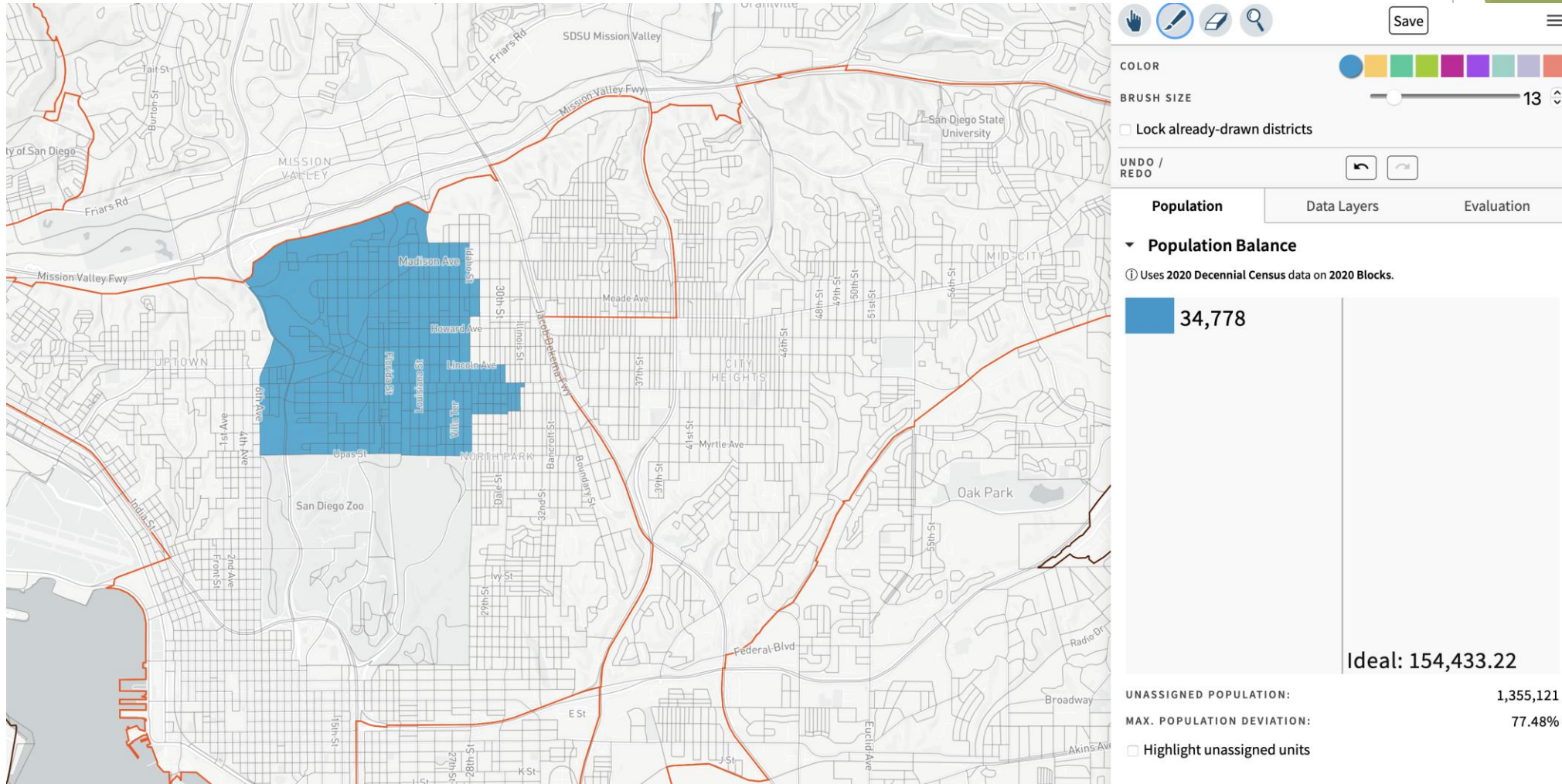
Please go to <https://bit.ly/sdmapping> to access the Districtr Mapping Tool

New Districtr Mapping Tool - Sample Screens



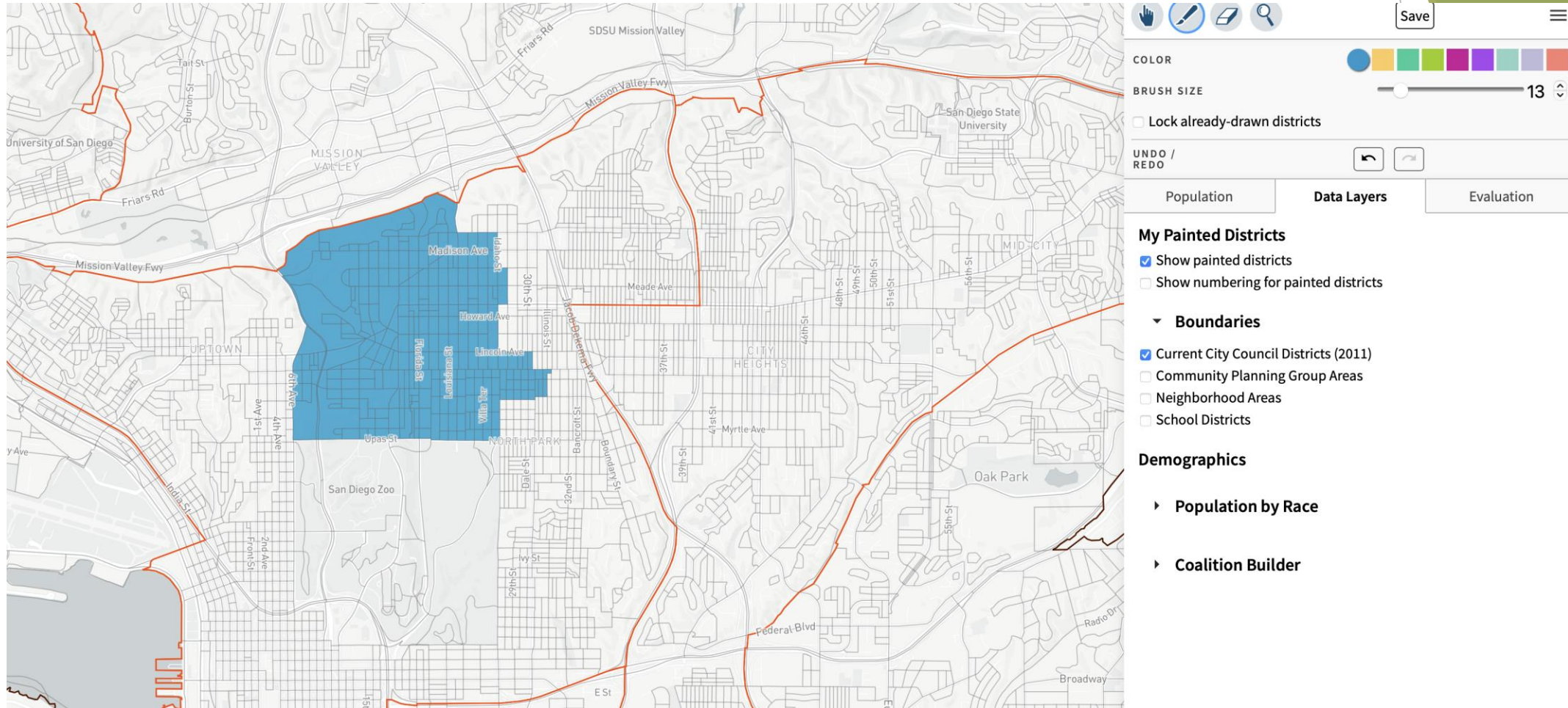
Please go to <https://bit.ly/sdmapping> to access the Districtr Mapping Tool

New Districtr Mapping Tool - Mapping by 'Painting'



Please go to <https://bit.ly/sdmapping> to access the Districtr Mapping Tool

New Districtr Mapping Tool - Data Layers

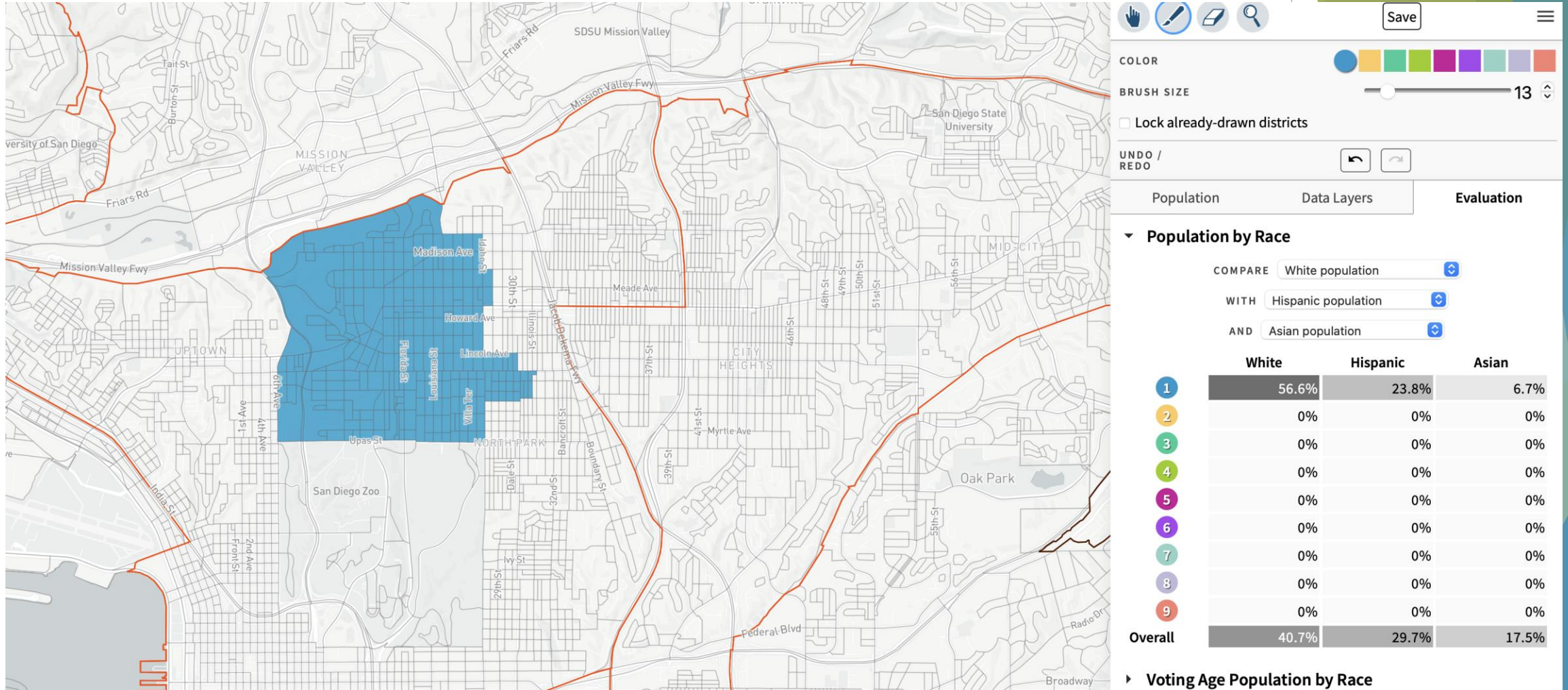


The screenshot displays the Districtr Mapping Tool interface. On the left, a map of San Diego is shown with a blue painted district in the central area. The map includes labels for various streets and landmarks such as Mission Valley Fwy, San Diego State University, and San Diego Zoo. On the right, a control panel is visible with the following elements:

- Save** button and a menu icon.
- COLOR** selection tool with a color palette.
- BRUSH SIZE** slider set to 13.
- Lock already-drawn districts
- UNDO / REDO** buttons.
- Navigation tabs: **Population**, **Data Layers** (selected), and **Evaluation**.
- My Painted Districts** section:
 - Show painted districts
 - Show numbering for painted districts
- Boundaries** section:
 - Current City Council Districts (2011)
 - Community Planning Group Areas
 - Neighborhood Areas
 - School Districts
- Demographics** section:
 - Population by Race
 - Coalition Builder

Please go to <https://bit.ly/sdmapping> to access the Districtr Mapping Tool

New Districtr Mapping Tool - Population Information



Please go to <https://bit.ly/sdmapping> to access the Districtr Mapping Tool

Save, Share, Submit Plans

Plan has been saved ✕

Use this URL to share your plan!

<https://districtr.org/plan/52089>

Copy to Clipboard

You can close this window and keep working, and update whenever you'd like. Even if you share the link, nobody but you can change your plan—other people's changes will save to a new link.

When you are ready, you can bring this map back to the submission form on the City of San Diego Redistricting Public Comment Portal.

Proceed to Submit Map

Please go to <https://bit.ly/sdmapping> to access the Districtr Mapping Tool

Some Suggestions When Creating New City Council Districts

- ▶ Remember to consider the rules the Commission has to follow:
 - ▶ Keep your districts close to the ideal 1/9th population size (no more than a total deviation of 10% between the largest and smallest district)
 - ▶ Compactness and contiguity
 - ▶ Keep communities of interest as intact as possible
 - ▶ Consider using major natural or man-made features to define districts as appropriate
- ▶ Consider the impact your preferred district plan has on ***all*** the districts - Does your plan cause other districts to be too big, too small, split communities of interest, etc?

Please go to <https://bit.ly/sdmapping> to access the Districtr Mapping Tool

Examples of Total Deviation Ranges (assumes Ideal District Size of 154,433)

Total Deviation % Range	District Size: Lower Limit	District Size: Upper Limit	TOTAL DEVIATION
10%*	146,711 (-5%)	162,155 (+5%)	15,444
8%	148,256 (-4%)	160,610 (+4%)	12,354
6%	149,800 (-3%)	159,066 (+3%)	9,266
5%**	150,572 (-2.5%)	158,294 (+2.5%)	7,721

- * Court-recommended maximum Total Deviation range (Gaffney v. Cummings)
- ** The redistricting plan of 2011 had a Total Deviation of 4.59%

Timeline for October - December

October 2021						
Sun	Mon	Tue	Wed	Thu	Fri	Sat
					1	2
3	4	5	6	7	8	9
10	11	12	13	14	15	16
17	18	19	20	21	22	23
24	25	26	27	28	29	30
31						

Designed by 123FreeVectors.com

November 2021						
Sun	Mon	Tue	Wed	Thu	Fri	Sat
	1	2	3	4	5	6
7	8	9	10	11	12	13
14	15	16	17	18	19	20
21	22	23	24	25	26	27
28	29	30				

December 2021						
Sun	Mon	Tue	Wed	Thu	Fri	Sat
			1	2	3	4
5	6	7	8	9	10	11
12	13	14	15	16	17	18
19	20	21	22	23	24	25
26	27	28	29	30	31	

Meetings every week between now and December 15 (excluding Thanksgiving Week)

- ▶ Two meetings to discuss themes heard at our nine public hearings
- ▶ Based on these themes, develop instructions for our map drawing consultant, Haystaq DNA, to create 2-3 different scenarios
- ▶ Haystaq DNA presents scenarios, Commission votes to refine as necessary
- ▶ Commission votes on Preliminary Map; submitted to City Clerk (early November)
- ▶ Commission holds 5 Public Hearings re Preliminary Map, including a Saturday meeting
- ▶ On or around December 15: Commission votes on Final Map; submitted to Registrar of Voters.