

**WORK PLAN**

- Remove old fence debris
- Remove visible asphalt and concrete debris
- Remove fence from wetland area
- Install fence along Crown Point Drive
- Install pedestrian gates for land management access
- Remove/treat target exotic species
- Install irrigation, native plants, and seeds in restoration areas

**MAINTENANCE ACTIVITIES**

Shall occur quarterly or as needed for 24 months post installation and shall include the following activities...

- Treatment /removal of target non-native species
- Trash removal
- Irrigation maintenance and repair
- Fence maintenance and repair

**MONITORING ACTIVITIES**

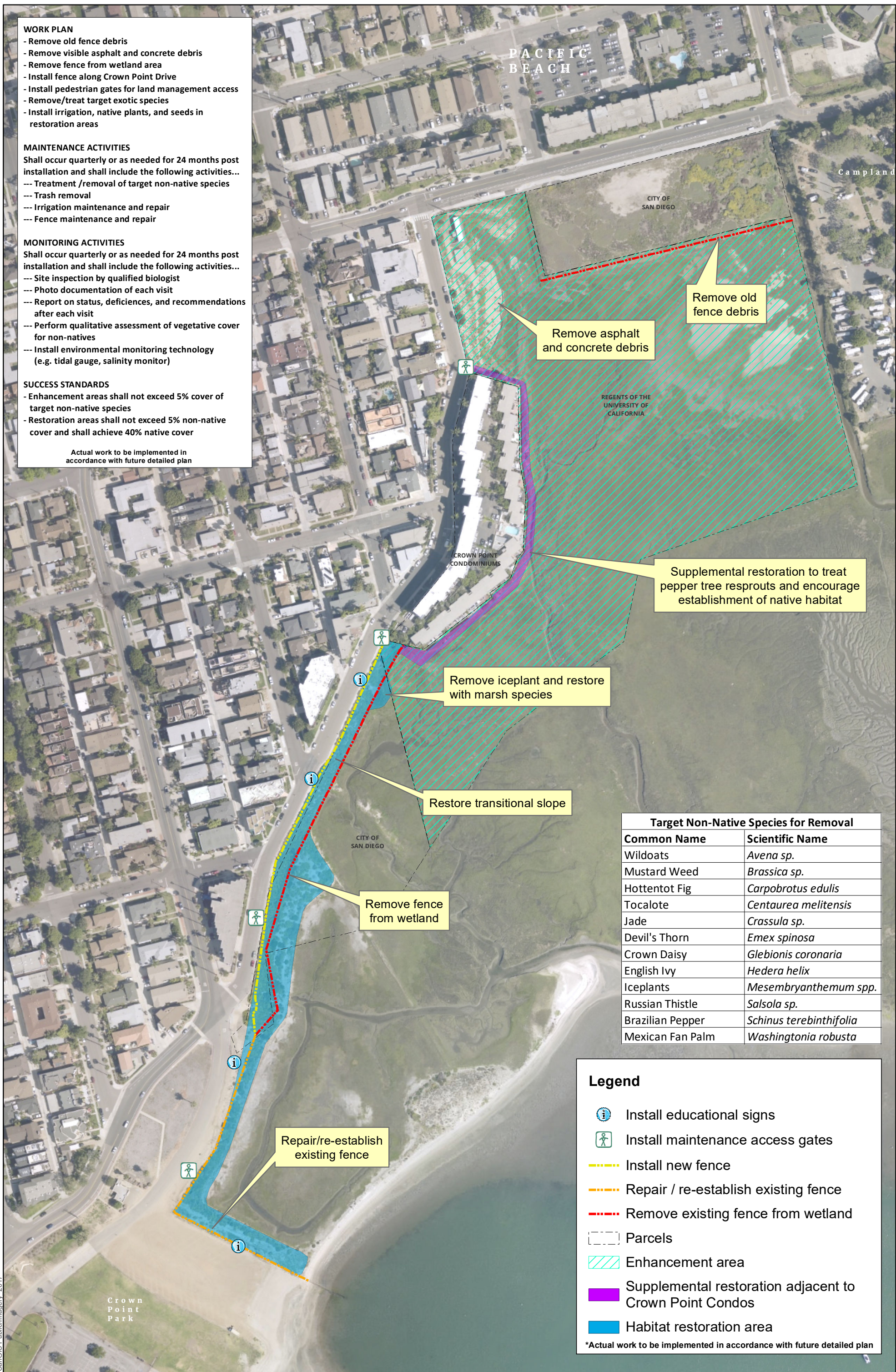
Shall occur quarterly or as needed for 24 months post installation and shall include the following activities...

- Site inspection by qualified biologist
- Photo documentation of each visit
- Report on status, deficiencies, and recommendations after each visit
- Perform qualitative assessment of vegetative cover for non-natives
- Install environmental monitoring technology (e.g. tidal gauge, salinity monitor)

**SUCCESS STANDARDS**

- Enhancement areas shall not exceed 5% cover of target non-native species
- Restoration areas shall not exceed 5% non-native cover and shall achieve 40% native cover

Actual work to be implemented in accordance with future detailed plan



Target Non-Native Species for Removal	
Common Name	Scientific Name
Wildoats	<i>Avena sp.</i>
Mustard Weed	<i>Brassica sp.</i>
Hottentot Fig	<i>Carpobrotus edulis</i>
Tocalote	<i>Centaurea melitensis</i>
Jade	<i>Crassula sp.</i>
Devil's Thorn	<i>Emex spinosa</i>
Crown Daisy	<i>Glebionis coronaria</i>
English Ivy	<i>Hedera helix</i>
Iceplants	<i>Mesembryanthemum spp.</i>
Russian Thistle	<i>Salsola sp.</i>
Brazilian Pepper	<i>Schinus terebinthifolia</i>
Mexican Fan Palm	<i>Washingtonia robusta</i>

**Legend**

- Install educational signs
- Install maintenance access gates
- Install new fence
- Repair / re-establish existing fence
- Remove existing fence from wetland
- Parcels
- Enhancement area
- Supplemental restoration adjacent to Crown Point Condos
- Habitat restoration area

\*Actual work to be implemented in accordance with future detailed plan

SanGIS Public Imagery 2017