

*Return to City Engineers Office
City Hall, San Diego, Cal.*

491

4000

LEVEL

F.B. 491

*Return to City Engineers Office
City Hall, San Diego, Cal.*

Published by H. S. CROCKER COMPANY, Stationers, Drawing Materials, and Mathematical Instruments, San Francisco.

Table showing the difference of latitude and departure in running 80 chains at any course from 1 to 60 minutes.

MINUTES.	LKS.	MINUTES.	LKS.	MINUTES.	LKS.
1	2 $\frac{1}{2}$	21	49	41	95 $\frac{1}{2}$
2	4 $\frac{1}{2}$	22	51 $\frac{1}{2}$	42	98
3	7	23	53 $\frac{1}{2}$	43	100 $\frac{1}{2}$
4	9 $\frac{1}{2}$	24	56	44	102 $\frac{1}{2}$
5	11 $\frac{1}{2}$	25	58 $\frac{1}{2}$	45	105
6	14	26	60 $\frac{1}{2}$	46	107 $\frac{1}{2}$
7	16 $\frac{1}{2}$	27	63	47	109 $\frac{1}{2}$
8	18 $\frac{1}{2}$	28	65 $\frac{1}{2}$	48	112
9	21	29	67 $\frac{1}{2}$	49	114 $\frac{1}{2}$
10	23 $\frac{1}{2}$	30	70	50	116 $\frac{1}{2}$
11	25 $\frac{1}{2}$	31	72 $\frac{1}{2}$	51	119
12	28	32	74 $\frac{1}{2}$	52	121 $\frac{1}{2}$
13	30 $\frac{1}{2}$	33	77	53	123 $\frac{1}{2}$
14	32 $\frac{1}{2}$	34	79 $\frac{1}{2}$	54	126
15	35	35	81 $\frac{1}{2}$	55	128 $\frac{1}{2}$
16	37 $\frac{1}{2}$	36	84	56	130 $\frac{1}{2}$
17	39 $\frac{1}{2}$	37	86 $\frac{1}{2}$	57	133
18	42	38	88 $\frac{1}{2}$	58	135 $\frac{1}{2}$
19	44 $\frac{1}{2}$	39	91	59	137 $\frac{1}{2}$
20	46 $\frac{1}{2}$	40	93 $\frac{1}{2}$	60	140

TABLE FOR RUNNING ON SLOPES.

In the following table the first column shows the angle, the second the number of links to be added to a chain on the slopes, to make one chain, horizontal measurement.

ANGLE	COR. IN LINKS	ANGLE	COR. IN LINKS	ANGLE	COR. IN LINKS	ANGLE	COR. IN LINKS
°		°		°		°	
4	0.24	11	1.88	18	5.14	25	10.54
5	0.38	12	2.24	19	5.76	26	11.26
6	0.55	13	2.63	20	6.42	27	12.24
7	0.76	14	3.06	21	7.11	28	13.37
8	0.98	15	3.53	22	7.85	29	14.34
9	1.24	16	4.02	23	8.64	30	15.47
10	1.55	17	4.56	24	9.47	35	22.07

190
 280
 80
 360

140
 80
 37.27
 257.27

5.38
+1.54
6.92

6.17
+1.57
7.74

5.41
+1.21
6.62

4.65
+1.03
5.68

3.89
+1.87
5.76

213 = 0
76
3.89 = 25
76
4.65 = 50
76
5.41 = 75
76
6.17 = 100
76
6.93 = 125

6.92
8.13
5 13.79
76

380

sec. UP85 ST W.L. Vermont to Alabama

1/2
109
Dunelle
Shaw
Deyell

B.M. S.E. of Park 2 Cypress 302.55

B.M.	2.65	325.23		
T.P.	2.77	295.52	12.70	292.53
T.P.	2.91	290.67	5.76	289.76
T.P.	4.21	286.50	8.41	282.26

Note - UP85 st 85.5' wide at E. of Vermont

H

UP85 st 82' wide at E. of Richmond

" " 75.6' " " W.L. Alabama

Angle of S.W. of UP85 at N. of Park at Richmond

UP7

286.50

W.L. Vermont 80' wide

N 29.3 257.2

nk **POSTED** 28.2 258.3

" 29.1 257.4

M 31.9 254.6

" 34.2 252.3

erk 35.9 250.6

S 34.6 251.9

286.50

W. curl

S	27.3	257.2
curl	26.5	266.0
"	26.0	260.5
M	26.2	260.3
"	23.1	263.4
curl	22.6	263.9
N	22.6	263.9

N "

N	19.2	267.5
curl	18.8	269.7
"	13.4	268.1
M	21.0	265.5
"	20.5	266.0
curl	20.6	265.9
S	22.2	264.3

Center

S	16.1	270.4
curl	15.1	271.4
"	14.5	271.0
M	14.1	272.4
"	13.5	273.0
curl	11.9	274.6
N	12.9	273.6

286.50

E "

2

N	8.7	277.8
curl	8.4	278.1
"	8.6	277.9
M	9.0	277.5
"	9.9	276.6
curl	10.4	276.1
S	10.9	276.1

E. curl

S	8.3	278.2
curl	8.4	278.1
"	8.2	278.3
M	8.2	278.3
"	8.1	278.4
curl	8.0	278.5
N	8.2	278.3

286.50

E. L. Vermont

N	6.6	279.9
cab	7.7	278.8
1/4	7.7	278.8
ctr	7.7	278.8
1/4	7.9	278.6
cab	8.1	278.4
S	8.2	278.3

0 + 25

S	7.6	278.9
cab	7.6	278.9
1/4	7.2	279.3
ctr	7.0	279.5
1/4	7.3	279.2
cab	7.5	279.0
N	7.3	279.2

286.5

3

N	6.6	279.9
cab	6.7	278.8
1/4	7.0	279.5
ctr	6.9	279.6
1/4	7.0	279.5
cab	7.5	279.0
S	7.8	278.7

0 + 75

S	6.6	279.9
cab	7.0	279.5
1/4	6.8	279.7
ctr	6.5	280.0
1/4	6.5	280.0
cab	5.9	281.1
N	4.7	281.8

286.50

170

N	5.2	281.3
cb	5.2	281.3
1/4	5.2	281.3
tr	5.4	281.1
1/4	5.8	280.7
cb	6.1	280.4
S	6.1	280.4

1725

S	6.1	280.4
cb	6.1	280.4
1/4	5.4	281.1
tr	5.3	281.2
1/4	5.0	281.5
cb	4.7	281.8
N	4.4	282.1

286.5

1750

N	3.9	282.6
cb	4.3	282.2
1/4	4.8	281.7
tr	5.1	281.9
1/4	5.4	281.1
cb	5.7	280.8
S	5.3	281.2

1775

S	4.9	281.6
cb	5.6	280.9
1/4	5.3	281.2
tr	5.2	281.3
1/4	5.1	281.4
cb	4.9	281.6
N	4.7	281.8

4

286.50

2+0

N	3.5	283.0
col	4.6	281.9
"4	5.0	281.5
"4	4.9	281.6
"4	5.0	281.5
col	5.2	281.3
S	5.2	281.3

2+25

S	5.2	281.3
col	5.0	281.5
"4	5.0	281.5
"4	4.8	281.7
"4	5.0	281.5
col	5.0	281.5
N	4.3	282.2

286.50

2+50

N	4.4	282.1
col	4.8	281.7
"4	4.8	281.7
"4	4.8	281.7
"4	4.9	281.6
col	5.1	281.4
S	5.0	281.5

2+75

S	4.4	282.1
col	4.4	282.1
"4	4.7	281.8
"4	4.8	281.7
"4	4.7	281.8
col	4.7	281.8
N	4.6	281.9

5

286.50

3+1

N	4.1	282.9
wh	4.5	282.0
"	4.3	282.2
M	4.3	282.2
"	4.4	282.1
wh	4.6	281.9
S	4.7	281.8

3+25

S	5.5	281.0
wh	4.5	281.9
"	4.7	281.8
M	4.5	282.0
"	4.5	282.0
wh	4.0	282.5
N	3.9	282.6

286.5

3+50

"	3.8	282.7
wh	4.4	282.1
"	4.7	281.8
M	4.8	281.7
"	5.2	281.3
wh	5.5	281.0
S	6.1	280.9

3+75

S	5.8	280.7
wh	4.9	281.6
"	4.9	281.6
M	4.7	281.8
"	4.7	281.8
wh	3.9	282.6
N	3.4	283.1

6

286.50

41.0

N	3.6	282.9
wh	4.0	282.5
"	4.2	282.3
M	4.5	282.0
"	4.7	281.8
wh	5.2	281.3
S	5.9	280.6

41.25

S	6.2	280.3
wh	5.3	281.2
"	5.1	281.4
M	4.7	281.8
"	4.4	282.1
wh	4.2	282.3
N	3.7	282.8

286.5

41.50

7

N	3.5	283.0
wh	4.2	282.3
"	4.6	281.9
M	5.0	281.5
"	5.3	281.2
wh	5.8	280.7
S	6.0	280.5

41.75

S	5.7	280.8
wh	5.5	281.0
"	5.1	281.4
M	4.8	281.7
"	4.5	282.0
wh	4.2	282.3
N	3.2	283.3

286.50

510

N	2.8	283.7
col	3.5	283.0
"A	4.3	282.2
"A	4.7	281.8
"A	5.0	281.5
col	5.3	281.2
S	5.9	281.1

5125

S	4.5	281.7
col	5.0	281.5
"A	4.8	281.7
"A	4.5	282.0
"A	4.1	282.4
col	3.6	282.9
N	3.0	283.5

286.5

5150

8

N	2.9	283.6
col	3.5	283.0
"A	4.1	282.4
"A	4.3	282.2
"A	4.5	282.0
col	4.8	281.7
S	4.1	282.4

5125

S	3.7	282.8
col	4.4	282.1
"A	4.2	282.3
"A	4.0	282.5
"A	3.9	282.6
col	3.4	283.1
N	2.5	283.7

286.50

6402 N. Richmond St 80' x 140'

N		3.1	283.4	
crk		3.5	283.0	
"		3.5	283.0	
N		3.8	282.7	
"		4.0	282.5	
crk		3.9	282.6	
S		3.2	283.3	
T.P.	9.23	292.10	3.68	282.87

W curb

S		8.8	283.3
crk		9.1	283.0
"		9.2	282.9
N		9.4	282.7
"		9.5	282.3
crk		9.2	282.9
N		8.9	283.7

292.10

W "

9

N		8.6	283.5
crk		9.2	282.9
"		9.7	282.4
N		9.9	282.7
"		9.2	282.9
crk		9.1	283.0
S		8.4	283.7

Center

S		8.4	283.7
crk		9.0	283.1
"		9.1	283.0
N		9.1	283.0
"		9.2	282.9
crk		8.9	283.2
N		8.4	283.7

01

292.10

E 114

N	8.3	283.8
crk	8.5	283.6
"A	9.2	282.9
M	9.1	283.0
"A	9.0	283.1
crk	9.1	283.0
S	8.6	283.5

E. Cove

S	8.9	283.2
crk	9.2	282.9
"A	9.3	282.8
M	9.2	282.9
"A	9.1	283.0
crk	8.3	283.8
N	8.1	284.0

292.10

E. L. Richmond St

10

N	7.9	289.2
crk	8.0	289.1
"A	8.8	283.3
M	9.1	283.0
"A	8.8	283.3
crk	9.0	283.1
S	9.0	283.1

0.125 E of Richmond

S	7.6	289.5
crk	7.8	289.6
"A	7.7	289.4
M	7.6	289.5
"A	8.2	283.9
crk	8.1	289.0
N	7.8	289.5

292.10

0+50

N	8.0	289.1
col	8.2	283.9
"A	7.9	284.2
M	7.3	284.8
"A	7.0	285.1
col	6.9	285.2
S	7.1	285.0

0+75

S	6.5	285.6
col	6.6	285.5
"A	6.6	285.5
M	6.9	285.2
"A	7.1	285.0
col	6.9	285.2
N	6.5	285.6

292.10

1+0

11

N	5.7	286.4
col	6.0	286.1
"A	6.2	285.9
M	5.9	286.2
"A	5.5	286.6
col	5.9	286.2
S	5.5	286.6

1+25

S	5.1	287.0
col	5.4	286.7
"A	5.3	286.8
M	5.4	286.7
"A	5.4	286.7
col	5.5	286.6
N	4.9	287.2

292.10

1750

N	5.2	286.9
col	5.3	286.8
1/4	5.0	287.1
N	5.2	286.9
1/4	5.1	287.0
col	5.0	287.1
S	4.5	287.6

1725

S	4.8	287.3
col	5.1	287.0
1/4	4.9	287.2
N	4.7	287.4
1/4	4.6	287.5
col	5.1	287.0
N	5.1	287.0

292.10

210

12

N	5.2	286.9
col	5.1	287.0
1/4	4.7	287.4
N	4.6	287.5
1/4	4.5	287.6
col	4.3	287.8
S	4.1	288.0

2225

S	3.9	288.2
col	4.2	287.9
1/4	4.7	287.4
N	5.0	287.1
1/4	5.2	286.9
col	5.5	286.6
N	5.5	286.6

292.10

2750 = W.L. Albert, 80' wide

N	4.9	287.2
cab	5.4	286.7
"4	5.3	286.8
N	5.2	286.9
"4	5.0	287.1
cab	4.8	287.3
S	4.7	287.4

W. Clark

S	4.7	287.4
cab	4.9	287.2
"4	5.1	287.0
N	5.4	286.7
"4	5.3	286.8
cab	5.2	286.9
N	4.6	287.5

292.10

W "4

N	4.2	287.9
cab	4.7	287.4
"4	5.0	287.1
N	5.1	287.0
"4	5.0	287.1
cab	5.2	286.9
S	4.7	287.4

Center

S	4.7	287.4
cab	4.7	287.4
"4	4.7	287.4
N	4.8	287.3
"4	4.7	287.4
cab	4.0	288.1
N	3.9	288.2

13

292110

E 1/4

N	3.8	288.3
cut	3.8	288.3
1/4	4.4	287.7
1/4	4.7	287.4
1/4	4.4	287.7
cut	4.4	287.7
S	4.3	287.8

E. CURVE

S	4.2	287.9
cut	4.3	287.8
1/4	4.1	288.0
1/4	4.5	287.6
1/4	4.1	288.0
cut	3.6	288.5
N	3.7	288.4

292110

E. L. ALBERT

14

N	2.9	289.2
cut	3.4	288.7
1/4	3.6	288.5
1/4	3.8	288.3
1/4	3.8	288.3
cut	4.0	288.1
S	4.1	288.0

T.P. 8.49 287.69 2.20 289.20

0+25 E of Albert

S	8.9	288.8
cut	8.5	289.2
1/4	8.4	289.3
1/4	8.3	289.4
1/4	8.5	289.2
cut	8.4	289.3
N	8.0	289.7

297.69

0+50

N	7.2	290.5
erb	7.3	290.4
"4	7.5	290.2
M	7.5	290.2
"4	7.6	290.1
erb	7.7	290.0
S	7.9	289.8

0+75

S	6.9	290.8
erb	7.2	290.5
"4	7.2	290.5
M	7.1	290.6
"4	6.9	290.8
erb	6.6	291.1
N	6.3	291.4

 1/4
 109
 Simple
 Shaw
 Digital

297.69

1+0

N	5.9	291.8
erb	6.3	291.4
"4	6.5	291.2
M	7.2	290.5
"4	6.9	290.8
erb	6.4	291.3
S	6.3	291.4

1+25

S	5.1	292.6
erb	5.6	292.1
"4	6.3	291.4
M	6.8	290.9
"4	6.4	291.3
erb	6.1	291.6
N	6.1	291.6

15

240 = N.L. Herbert St 80' wide

N	5.7	292.0
Sbk	5.7	292.0
"	5.5	292.2
M	5.2	292.5
"	5.0	292.7
Sbk	5.0	292.7
S	4.5	293.2
N. CURVE		
S	4.5	293.2
"	4.6	293.1
"	4.4	293.3
M	4.6	293.1
"	4.9	292.8
Sbk	5.5	292.2
"	5.6	292.1

1750

N	6.0	291.7
Sbk	6.1	291.6
"	6.2	291.5
M	6.0	291.7
"	5.5	292.2
Sbk	4.9	292.8
S	4.5	293.9
1775		
S	3.9	293.8
"	4.7	293.0
Sbk	5.5	292.2
"	5.7	292.0
"	5.3	292.4
Sbk	5.5	292.2
N	5.8	291.9

297.69

N "4

N	5.2	292.5
cb	5.6	292.1
"4	5.0	292.7
N	4.6	293.1
"4	4.3	293.4
cb	4.4	293.3
S	4.5	293.2

center

S	4.3	293.4
cb	4.5	293.2
"4	4.7	293.0
N	4.7	293.0
"4	5.1	292.6
cb	5.9	291.8
N	5.3	292.4

E "4

17

N	6.0	291.7
cb	6.1	291.6
"4	5.6	292.1
N	5.5	292.2
"4	4.8	292.9
cb	4.6	293.1
S	4.5	293.2

E. curb

S	4.6	293.1
cb	5.0	292.7
"4	5.4	292.3
N	5.7	292.0
"4	5.9	291.8
cb	6.1	291.6
N	6.5	291.2

297.69

E. L. Herbert St

N	6.2	291.5
cut	6.2	291.5
"4	5.8	291.9
M	6.0	291.7
"4	5.3	292.4
cut	4.4	293.3
S	5.1	292.6

0+25E of Herbert

S	5.6	292.1
cut	5.1	292.6
"4	5.6	292.1
M	6.0	291.7
"4	5.9	291.8
cut	6.1	291.6
N	5.8	291.9

18

0+50

N	4.8	292.9
cut	5.3	292.4
"4	5.7	292.0
M	5.9	291.8
"4	6.0	291.7
cut	5.9	291.8
S	5.6	292.1

0+75

S	5.6	292.1
cut	5.6	292.1
"4	5.6	292.1
M	5.1	292.6
"4	5.5	292.2
cut	5.0	292.7
N	4.9	292.8

297.69

1+0

N	4.9	292.8
col	4.8	292.9
"A	5.0	292.7
N	4.9	292.8
"A	4.8	292.9
col	4.8	292.9
S	4.8	292.9

1+25

S	4.5	293.2
col	4.4	293.3
"A	4.6	293.1
N	5.0	292.7
"A	4.7	293.0
col	4.9	292.8
N	4.9	292.8

1+50

19

N	6.0	291.7
col	5.4	292.3
"A	5.3	292.4
N	5.4	292.3
"A	5.1	292.6
col	4.6	293.1
S	4.3	293.4

1+75

S	5.0	292.7
col	5.6	292.1
"A	5.8	291.9
N	6.1	291.6
"A	6.1	291.6
col	5.3	292.4
N	5.8	291.9

297.69

2+0

N	6.4	291.3
erb	6.3	291.4
1/4	6.2	291.5
M	6.0	291.7
1/4	5.8	291.9
erb	5.4	292.3
S	5.6	292.1

2+25

S	5.6	292.1
erb	5.6	292.1
1/4	5.8	291.9
M	5.7	292.0
1/4	5.9	291.8
erb	5.9	291.8
N	6.0	291.7

2+50

20

N	5.7	292.0
erb	5.4	292.3
1/4	4.8	292.9
M	5.5	292.2
1/4	5.4	292.3
erb	5.2	292.5
S	5.5	292.2

2+75

S	4.6	293.1
erb	3.5	294.2
1/4	4.1	293.6
M	5.1	292.6
1/4	5.1	292.6
erb	4.9	292.8
N	4.0	293.7

297.69

3+0

N	3.9	293.8
crk	4.0	293.7
"A	4.1	293.6
M	3.9	293.8
"A	4.4	293.3
crk	4.5	293.2
S	4.0	293.7

3+25

S	3.0	294.7
crk	3.2	294.5
"A	3.7	294.0
M	3.7	294.0
"A	3.3	294.4
crk	3.2	294.5
N	2.4	295.3

3+50

N	3.0	294.7
crk	2.8	294.9
"A	3.0	294.7
M	3.1	294.6
"A	3.0	294.7
crk	2.7	295.0
S	3.2	294.5

3+75

S	2.6	295.1
crk	2.4	295.3
"A	2.3	295.4
M	2.1	295.6
"A	2.5	295.2
crk	2.1	295.6
N	1.4	296.3

297.69

4+08^{1/4} = W.L. Park Boulevard 150' wide

N	1.9	295.8
crk	1.9	295.8
1/4	2.0	295.7
M	2.1	295.6
1/4	2.1	295.6
crk	1.9	295.8
S	2.1	295.6

N. curb

S	2.1	295.6
crk	2.1	295.6
1/4	2.2	295.5
M	2.0	295.7
1/4	1.8	295.9
crk	1.5	296.2
N	1.5	296.2

W 1/4

22

N	1.5	296.2
crk	1.6	296.1
1/4	1.7	296.0
M	1.8	295.9
1/4	1.8	295.9
crk	1.9	295.8
S	2.2	295.5

Center

S	1.2	296.5
crk	1.0	296.7
1/4	0.8	296.9
M	0.7	297.0
1/4	0.8	296.9
crk	0.7	297.0
N	0.4	297.3

297.69

E. 1/4

N	1.1	296.6
cut	1.1	296.6
1/4	0.9	296.8
N	1.0	296.7
1/4	1.1	296.6
cut	1.5	296.2
S	2.0	295.7

E. cut

S	3.2	299.5
cut	2.8	299.9
1/4	2.5	295.2
N	2.5	295.2
1/4	2.3	295.4
cut	1.9	295.8
N	1.6	296.1

T. P.	2.53	303.91	2.31	295.38
-------	------	--------	------	--------

303.91

E. Park Blvd

23

N	2.5	295.4
cut	2.6	295.3
1/4	9.3	294.6
N	9.5	294.4
1/4	9.6	294.3
cut	9.8	294.1
S	10.4	293.5

0+25 E of Park

S	11.9	292.0
cut	11.5	292.4
1/4	11.1	292.8
N	10.7	293.2
1/4	10.5	293.4
cut	10.2	293.7
N	9.8	294.1

30391

0+50

N	7.0	294.9
erb	9.3	294.6
1/4	9.4	294.5
M	10.1	293.8
1/4	10.4	293.5
erb	10.5	293.4
S	11.0	292.9

0+75

S	9.3	294.6
erb	9.0	294.9
1/4	8.6	295.3
M	8.4	295.5
1/4	8.2	295.7
erb	7.7	296.2
N	7.5	296.4

24

1+0

N	6.1	297.8
erb	6.4	297.5
1/4	6.7	297.2
M	7.1	296.8
1/4	7.3	296.6
erb	7.4	296.5
S	7.1	296.8

1+25

S	5.5	298.4
erb	5.7	298.2
1/4	5.9	298.0
M	5.8	298.1
1/4	5.7	298.2
erb	5.8	298.1
N	5.6	298.3

1+50

N	4.2	299.7
col	4.4	299.5
"A	4.3	299.6
N	4.5	299.4
"A	4.4	299.5
col	4.4	299.5
S	4.5	299.4

1+75

S	4.1	299.8
col	3.8	300.1
"A	3.6	300.3
N	3.4	300.5
"A	3.6	300.3
col	3.5	300.4
N	3.3	300.6

2+0

N	2.6	301.3
col	2.6	301.3
"A	2.2	301.7
N	2.7	301.2
"A	2.7	301.2
col	2.9	301.0
S	2.8	301.1

2+25

S	3.0	300.9
col	2.8	301.1
"A	2.7	301.2
N	2.6	301.3
"A	2.5	301.4
col	2.2	301.7
N	2.5	301.4

303.91

2+50

N	3.2	300.7
curl	3.0	300.9
"	3.7	300.2
N	3.1	300.8
"	3.0	300.9
curl	2.9	301.0
S	3.0	300.9

2+75

S	3.3	300.6
curl	3.4	300.5
"	3.5	300.4
N	3.7	300.2
"	3.8	300.1
curl	4.2	299.7
N	4.0	299.9

26

3+0 = W.L. Indiana St 80' wide

N	4.6	299.3
curl	4.7	299.2
"	4.6	299.3
N	4.4	299.5
"	4.5	299.4
curl	4.0	299.9
S	4.5	299.4

W. CURL

S	4.9	299.0
curl	4.7	299.2
"	4.8	299.1
N	4.8	299.1
"	4.9	299.0
curl	4.8	299.1
N	4.9	299.0

N "A

N	5.4	298.5
cut	5.2	298.7
"A	5.1	298.8
M	4.9	299.0
"A	5.1	298.8
cut	5.2	298.7
S	5.2	298.7

Center

S	5.4	298.5
cut	5.5	298.4
"A	5.4	298.5
M	5.2	298.7
"A	5.3	298.6
cut	5.5	298.4
N	5.8	298.1

E "A

N	5.9	298.0
cut	5.8	298.1
"A	5.6	298.3
M	5.8	298.1
"A	5.7	298.2
cut	5.9	298.0
S	5.9	298.0

E cut

S	6.7	297.2
cut	6.6	297.3
"A	6.3	297.6
M	6.2	297.7
"A	6.3	297.6
cut	6.1	297.8
N	6.3	297.6

303.91

E. of Indiana st

N	6.8	297.1
cut	6.7	297.2
"4	6.8	297.1
N	6.8	297.1
"4	7.0	296.9
cut	7.1	296.8
S	7.4	296.5

0+25' E

S	9.1	294.8
cut	9.2	294.7
"4	9.2	294.7
N	9.3	294.6
"4	9.4	294.5
cut	9.6	294.3
N	10.4	293.5

0+50

28

N	12.4	291.5
cut	12.0	291.9
"4	12.2	291.7
N	12.7	291.2
"4	12.6	291.3
cut	12.9	291.0
S	13.0	290.9

T.P. 11.52 292.76 12.67 291.24

0+75

S	6.0	286.8
cut	5.9	286.9
"4	6.2	286.6
N	5.8	287.0
"4	5.4	287.4
cut	5.8	287.0
N	6.4	286.4

292.76

1+0

N	11.6	281.2
erb	12.3	280.5
"A	11.2	281.6
M	11.3	281.5
"A	12.0	280.8
erb	11.8	281.0
S	12.0	280.8

T.P.	0.28	280.91	12.63	280.13
------	------	--------	-------	--------

1+25

S	5.7	274.7
erb	6.1	274.3
"A	5.9	274.5
M	5.5	274.9
"A	6.6	273.8
erb	7.2	273.2
N	8.2	272.2

29

1+50

N	11.9	265.5
erb	12.7	267.7
"A	12.8	267.6
M	12.4	268.0
"A	12.5	267.9
erb	10.9	269.5
S	11.1	269.3

T.P.	0.03	267.99	12.95	267.96
------	------	--------	-------	--------

1+75

S	4.1	263.4
erb	4.9	262.6
"A	4.8	262.7
M	4.5	263.0
"A	4.9	262.6
erb	6.6	260.9
N	9.1	258.4

267.49

2+0

N		17.0	250.5
erb		14.8	252.7
"		14.1	253.4
M		12.3	255.2
"		11.8	255.7
erb		12.0	255.5
S		11.2	256.3
T.P.	0.20	255.19	12.50 259.99

2+25

S		5.7	249.5
erb		6.0	249.2
"		6.4	248.8
M		7.1	248.1
"		9.5	245.7
erb		11.4	243.8
N		12.6	242.6

30

2+50

N		20.8	234.4
erb		19.2	236.0
"		18.0	237.2
M		17.2	238.0
"		16.5	238.7
erb		16.2	239.0
S		14.3	240.9
T.P.	0.07	242.51	22.75 242.49

2+75

S		9.4	233.1
erb		11.0	231.5
"		12.1	230.4
M		12.1	230.4
"		13.0	229.5
erb		13.9	228.6
M		16.5	226.0
T.P.	0.46	230.36	12.61 229.90

230.36

1/5 sample
of Shaw
Byrd

3702 W. Georgia St. 80 wide

N	12.2	218.2
cut	10.9	219.5
"A	9.8	220.6
N	9.1	221.3
"A	8.7	221.7
cut	7.5	222.9
S	4.1	226.3

W. cut

S	7.1	223.3
cut	10.6	219.8
"A	13.7	216.7
N	14.6	215.8
"A	14.6	215.8
cut	15.0	215.4
N	15.2	215.2

T.P.	6.68	224.87	12.17	218.19
------	------	--------	-------	--------

224.87

W "A

31

N	9.9	215.0
cut	11.7	213.2
"A	11.8	213.1
N	11.3	213.6
"A	10.3	214.6
cut	7.9	217.0
S	5.3	219.6

center

S	9.6	215.3
cut	11.2	213.1
"A	13.2	211.7
N	13.1	211.8
"A	11.3	213.6
cut	7.8	217.1
N	4.9	220.5

224.57

E 14

N	+0.5	225.4
cut	4.8	220.1
"	8.7	216.2
M	12.2	212.7
"	14.2	210.7
cut	15.2	209.7
S	13.7	211.2

E. CORN

S	16.2	208.7		
cut	14.1	210.8		
"	11.6	213.3		
M	9.1	215.8		
"	5.9	219.0		
cut	2.9	222.0		
T.P.	16.99	235.90	1.46	223.41
N.L.	8.6	226.8		

32

E.L. Georgia St

N	7.1	228.3
cut	10.8	224.6
"	14.0	221.4
M	16.8	218.6
"	19.7	215.7
cut	22.6	212.8
S	25.4	210.0

O+25' E

S	21.8	218.6		
cut	13.9	216.5		
"	15.5	219.9		
M	12.4	223.0		
"	8.4	227.0		
cut	5.1	230.3		
N	1.5	233.9		
T.P.	10.30	245.00	0.70	234.70

245.00

0+50

N	5.0	240.0
Crk	7.8	237.2
"A	10.6	234.4
M	13.7	231.3
"A	18.3	226.7
Crk	22.6	222.4
S	26.3	218.2

0+75

S	19.9	225.1
Crk	19.8	230.2
"A	11.0	234.0
M	6.7	238.3
"A	4.7	240.3
Crk	3.1	241.9
N	1.4	243.6

33

1+0

N	4.7	240.3
Crk	5.4	239.6
"A	6.4	238.6
M	8.5	236.5
"A	11.7	233.3
Crk	15.4	229.6
S	20.0	225.0

1+25

S	26.3	218.7
Crk	21.9	223.1
"A	18.9	226.1
M	15.6	229.4
"A	13.9	231.1
Crk	12.0	233.0
N	11.7	233.3
T.P.	0.68	232.86
	12.52	232.18

232.86

1450

N		6.8	226.1
crb		10.3	222.6
"		12.6	220.3
M		14.2	218.7
"		15.5	217.4
crb		12.8	214.1
S		22.6	210.3
T.P.	0.17	220.27	12.76 220.10
T.P.	5.88	213.42	12.23 209.54

1475

S		11.3	202.1
crb		8.5	204.9
"		7.0	206.4
M		5.8	207.6
"		4.2	209.2
crb		1.9	211.5
N		40.4	213.0

34

240

N		9.1	204.3
crb		11.3	202.1
"		13.1	200.3
M		14.1	199.3
"		15.5	197.9
crb		17.2	196.2
S		18.9	194.5
T.P.	1.37	201.90	12.89 200.53

2225

S		9.8	192.1
crb		9.2	192.7
"		8.5	193.4
M		8.0	193.9
"		6.9	195.0
crb		5.9	196.0
N		3.6	198.3

2019

2+50

N	7.7	194.2
crk	8.5	193.4
"A	8.5	193.4
M	8.6	193.3
"A	8.8	193.1
crk	9.4	192.5
S	12.3	189.6

2+75

S	11.8	190.1
crk	9.4	192.5
"A	8.7	193.2
M	8.5	193.4
"A	7.8	194.1
crk	7.8	194.1
N	7.8	194.1

3+0 = W.L. Florida st. 80' wide

35

N	7.2	194.7
crk	7.3	194.6
"A	7.7	194.2
M	7.8	194.1
"A	8.1	193.8
crk	10.0	191.9
S	10.2	191.7

W. CRK

S	9.9	192.0
crk	10.0	191.9
"A	7.8	194.1
M	7.3	194.6
"A	6.8	195.1
crk	6.9	195.0
N	7.0	194.9

20190

N "4

N	6.5	195.4
orb	6.4	195.5
"4	6.6	195.3
N	7.4	194.5
"4	8.8	193.1
orb	9.9	192.0
S	9.3	192.6

Center

S	9.4	192.5
orb	9.1	192.8
"4	8.5	193.4
N	7.1	194.8
"4	7.2	194.7
orb	6.7	195.2
N	6.2	195.7

36

E "4

N	6.6	195.3
orb	6.7	195.2
"4	7.2	194.7
N	8.0	193.9
"4	9.0	192.9
orb	9.2	192.7
S	8.5	193.4

E. CURL

S	6.0	195.9
+S	9.1	192.8
orb	9.2	192.7
"4	8.5	193.4
N	8.6	193.3
"4	6.8	195.1
orb	6.7	195.2
N	6.6	195.3

E. L. Florida St

N	6.4	195.5
erb	6.9	195.0
"A	8.4	193.5
M	8.5	193.4
"A	8.8	193.1
erb	8.6	193.3
+5	7.5	194.4
5	1.0	200.9

T.P. 12.07 212.93 1.04 200.86

0+25 E

5	6.4	206.5
erb	8.0	204.9
"A	18.0	194.9
M	18.6	194.3
"A	18.2	194.7
erb	17.1	198.8
N	19.9	193.0

0+50

N	16.8	196.1
erb	15.7	197.2
"A	12.5	200.4
M	9.2	203.7
"A	5.2	207.7
erb	2.5	210.4
5	1.8	211.1

T.P. 12.16 225.01 0.08 212.85

0+75

5	8.0	217.0
erb	8.8	216.2
"A	10.2	214.8
M	12.5	212.5
"A	15.1	209.9
erb	18.6	206.4
N	20.8	204.2

225.01

170

N		17.2	207.8
crk		13.7	211.1
"		9.2	215.8
M		5.7	219.3
"		3.5	221.5
crk		3.6	221.4
S		3.5	221.5
T.P.	11.86	236.68	0.19 224.82

1725

S		8.8	227.9
crk		9.3	227.4
"		10.7	226.0
M		11.8	224.9
"		16.0	220.7
crk		20.7	216.0
N		25.9	210.8

38

1450

N		19.7	217.0
crk		13.8	222.9
"		8.0	228.7
M		5.2	231.5
"		3.9	232.8
crk		2.9	233.8
S		2.4	234.3
T.P.	12.97	249.62	0.03 236.65

1475

S		9.9	240.2
crk		9.6	240.0
"		10.4	239.2
M		11.8	237.8
"		13.9	235.7
crk		16.4	233.2
N		25.9	224.2

249.62

270

N	15.6	234.0
crk	11.4	238.2
"A	9.0	240.6
M	7.7	241.9
"A	6.8	242.8
crk	6.3	243.3
S	6.1	243.5
T.P.	10.15	257.90
	11.87	247.75

2725

S	11.2	246.7
crk	11.9	246.0
"A	12.6	245.3
M	13.8	244.1
"A	15.5	242.4
crk	16.8	241.1
N	16.2	241.7

257.90

2750

39

N	12.6	245.3
crk	13.1	244.8
"A	13.5	244.4
M	11.8	246.1
"A	10.9	247.0
crk	9.5	248.4
S	9.0	248.9

2775

S	7.4	250.5
crk	8.4	249.5
"A	9.4	248.5
M	10.4	247.5
"A	10.9	247.5
crk	10.8	247.6
N	10.2	247.7

257.90

310 = n.l. Alakama st

N	2.5	250.4
erb	2.6	250.3
114	2.0	249.9
M	2.2	249.7
114	2.7	250.0
erb	2.0	250.9
3	6.2	257.7

POSTED

40

Section Third of N.L.B. To S.L.B. of
"80' wide

1/11 Drunkle
by Shaw
Royal

B.M. N.W. Third of "C" St

41.96

B.M. 6.59 45.55

N.L. "B" St

E. curb	3.1	45.45
gutter	3.8	44.75
"A	3.2	45.35
+ 3.5 = 2' E. of E. rail	3.5	45.05
+ 5.5 = E. rail of E. track	3.7	
center	3.5	
+ 7.5 = W. rail of W. track	3.6	
+ 9.5 = 2' W. of W. rail	3.6	44.95
"A	3.6	44.95
gutter	4.6	43.95
W. curb	4.1	44.45

POSTED

48.55

41

N. curb line

W.L.	4.6	43.95
curb line	4.3	44.25
"A	2.8	44.75
+ 3.5	3.7	44.95
+ 5.5	3.7	
"A	3.7	
+ 7.5	3.7	
+ 9.5	3.7	44.95
"A	3.6	44.95
curb line	3.6	44.95
E.L.	3.5	45.05
N "A"		
E.L.	3.5	45.05
curb	3.6	44.95
"A	3.7	44.95
+ 3.5	3.8	44.75
+ 5.5	3.9	
"A	3.8	
+ 7.5	3.8	44.75
+ 9.5	3.8	44.75
"A	3.9	44.65
curb	4.1	44.45
W.L.	4.2	44.35

48.55

N 1/4 + 3.5 = 2' N of N. rail 15" st track.

W	4.2
orb	4.0
1/4	3.9
+ 3.5	3.8
+ 5.5	3.8
center	3.8
+ 7.5	3.9
+ 9.5	3.9
1/4	3.8
orb	3.7
E.Li	3.4

N 1/4 + 5.5 = N. rail 15" st. single track

E	3.9
orb	3.6
1/4	3.8
M	3.9
1/4	3.8
orb	3.9
W	4.0

48.55

center "B" st

42

W	4.2	44.35
orb	4.1	44.46
1/4	4.0	44.55
+ 3.5	4.0	44.55
+ 5.5	3.9	
M	3.9	
+ 7.5	3.9	
+ 9.5	3.9	44.65
1/4	3.9	44.65
orb	3.7	44.85
E	3.5	45.05

center + 0.5 = 2' S of S. rail.

E	3.5
orb	3.7
1/4	3.9
+ 3.5	3.9
+ 5.5	3.9
M	3.9
+ 7.5	3.9
+ 9.5	4.0
1/4	4.0
orb	4.1
W	4.2

4855

S "4

W	4.5	44.05
crib	4.3	44.25
"4	4.0	44.55
+3.5	4.0	44.55
+5.5	4.0	
M	3.9	
+7.5	4.0	
+9.5	4.0	44.55
"4	4.0	44.55
crib	4.0	44.55
E	3.9	44.65

S. CURB,

E. L.	4.4	44.15
crib. line	4.5	44.05
"4	4.2	44.35
+3.5	4.1	44.45
+5.5	4.1	
M	4.1	
+7.5	4.0	
+9.5	4.0	44.55
"4	4.2	44.35
crib. L.	4.6	43.95
W. L.	4.7	43.85

4855

S. L. "B" 57

43

W. crib	4.1	44.45
gutter	4.8	43.75
"4	4.3	44.25
+3.5	4.1	44.45
+5.5	4.1	
M	4.2	
+7.5	4.2	
+9.5	4.1	44.45
"4	4.2	44.95
gutter	4.7	43.85
E. CURB	4.1	44.45

1-section Union St S.W. to N.W. "D"

" " 43' between Curbs.

S.M. Brass Plg Front to "D"

29.34

11/11
109
Dunell
Shaver
Rejick

S.M.

2.45 31.79

S.W. "C" ST

E curb

2.8 29.0

gutter

3.5 28.3

"

3.2 28.6

M

POSTED

3.5 28.3

"

3.9 27.9

gtr

4.3 27.5

w. curb

3.8 28.0

0+25' 5

w. curb

4.0 27.8

gtr

4.4 27.4

"

4.0 27.8

M

3.6 28.2

"

3.6 28.2

gtr

3.7 28.1

E. curb

3.0 28.8

Note - curb & side walk in good condition

31.79

0+50

44

E curb

3.1 28.7

gtr

3.8 28.0

"

3.7 28.1

M

3.8 28.0

"

4.2 27.6

gtr

4.7 27.1

w. curb

4.1 27.7

0+75

w. curb

4.3 27.5

gtr

4.7 27.1

"

4.3 27.6

M

3.9 27.9

"

3.8 28.0

gtr

3.9 27.9

E. curb

3.2 28.6

3179

170

E. cab.	3.4	28.4
gte	4.1	27.7
"	3.9	27.9
M	4.0	27.8
"	4.5	27.3
gte	4.9	26.9
M. cab.	4.4	27.4

1725

M. cab.	4.5	27.3
gte	5.0	26.8
"	4.4	27.4
M	4.1	27.7
"	4.1	27.7
gte	4.1	27.7
E. cab.	3.5	28.3

3179

1750

E. cab.	3.7	28.1
gte	4.3	27.5
"	4.1	27.7
M	4.3	27.5
"	4.6	27.2
gte	5.0	26.8
M. cab.	4.7	27.1

1775

M. cab.	4.8	27.0
gte	5.1	26.7
"	4.8	27.0
M	4.4	27.4
"	4.3	27.5
gte	4.5	27.3
E. cab.	3.8	28.0

31.79

2+0

E. orb	3.9	27.9
gtc	4.4	27.4
"	4.3	27.5
M	4.4	27.4
"	4.8	27.0
gtc	5.0	26.8
w. orb	4.9	26.9

2+25

w. orb	5.0	26.8
gtc	5.3	26.5
"	4.8	27.0
M	4.7	27.1
"	4.5	27.3
gtc	4.9	26.9
E. orb	4.1	27.7

31.79

2+50

46

E. orb	4.2	27.6
gtc	4.7	27.1
"	4.7	27.1
M	4.3	27.0
"	5.0	26.8
gtc	5.4	26.4
w. orb	5.0	26.8

2+70⁵ = N.L. "D" 51

w. orb	5.2	26.6
gtc	5.6	26.2
"	5.2	26.6
M	4.9	26.9
"	4.8	27.0
gtc	5.0	26.8
E. orb	4.3	27.5

Section Front of S.L.C. To N.L.D. St. // 1/2" curbs
 " " 52' bet curbs, // 1/2" Shave
 B.M. brass pg. Cor. D' & Front 29.39 // 1/2" Digging

36.36
 0+25 3' of "C" 47

B.M. 7.02 36.36
 Note - Sidewalk in bad cond. Turn on E side from Sta
 2+0 To N.L.D. St.
 Curbs not in at following Stations on W. side account
 Trees, 0+0 - S.L.C. St. - from Sta 0+13 to 0+19 - Sta 0+27
 To 0+39 - Sta 0+57 to 0+69 - Sta 0+72 to 79
 curbs not in from Sta 0+87 to Sta 0+93 account drive to Court House
 4' black stone gutter W. side Sta 0+80 to N.L.D. St.

N. curb	5.0	31.36
gte	5.5	30.86
"A	5.0	31.36
M. POSTED	4.4	31.96
"A	4.4	31.96
gte	4.8	31.56
E. curb	4.0	32.36
0+50		
E. curb	4.2	32.16
gte	5.0	31.36
"A	4.9	31.96
M	4.5	31.86
"A	5.1	31.26
gte	5.7	30.66
W. curb	5.2	31.16

S.L.C. "C" St.
 E. curb 3.9 32.46
 gutter 4.7 31.66
 "A POSTED 4.2 32.16
 M 4.3 32.06
 "A 4.2 31.56
 gutter 5.5 30.86
 W. curb 4.9 31.46

36.36

0475

No curb

gte

5.8 30.56

"A

5.1 31.26

M

4.7 31.66

"A

4.6 31.26

gte

5.1 31.26

F. curb

4.8 31.56

170

F. curb

4.7 31.66

gte

5.3 31.06

"A

4.9 31.46

M

4.9 31.46

"A

5.4 30.96

gte

6.1 30.26

w. curb

5.5 30.86

36.36

1725

48

w. curb

5.6 30.76

gte

6.2 30.16

"A

5.5 30.86

M

5.1 31.26

"A

5.1 31.26

gte

5.4 30.96

F. curb

4.9 31.46

1750

F. curb

5.0 31.36

gte

5.6 30.76

"A

5.2 31.16

M

5.3 31.06

"A

5.7 30.66

gte

6.4 29.96

w. curb

5.7 30.66

36.36

1175

W. crk	5.9	30.46
gte	6.6	29.76
"	6.0	30.36
M	5.5	30.86
"	5.5	30.86
gte	5.8	30.56
F. crk	5.3	31.06

210

F. crk	5.9	30.96
gte	6.0	30.36
"	5.7	30.66
M	5.7	30.66
"	6.2	30.16
gte	6.6	29.76
W. crk	6.0	30.36

36.36

2125

49

W. crk	6.1	30.26
gte	6.8	29.56
"	6.2	30.16
M	5.8	30.56
"	5.8	30.56
gte	6.1	30.26
F. crk	5.6	30.76

2150

F. crk	5.8	30.56
gte	6.9	29.96
"	6.1	30.26
M	6.2	30.16
"	6.9	29.96
gte	6.9	29.96
W. crk	6.3	30.06

36.36

2110⁵ - N. L. "D" ST

m. ed.	6.3	30.06
gt	7.0	29.36
"A	6.5	29.86
M	6.3	30.06
"A	6.3	30.06
gt	6.5	29.86
F. ed.	6.0	30.36

POSTED

50

section Everett St Evans to 28th St

" " 80' wide

B.M. RR SPR M 3 27th St

65.69

Double
Space
Revised

B.M. 706 72.75

1- sec 'A'

S	5.8	67.3
cut	6.0	66.8
"	6.0	

M 6.3 66.5

"A 6.1 66.7

cut 6.2 66.6

N 5.9 66.9

1- sec 'B'

N 4.1 68.7

cut 4.9 67.9

"A 5.1 67.7

M 5.6 67.2

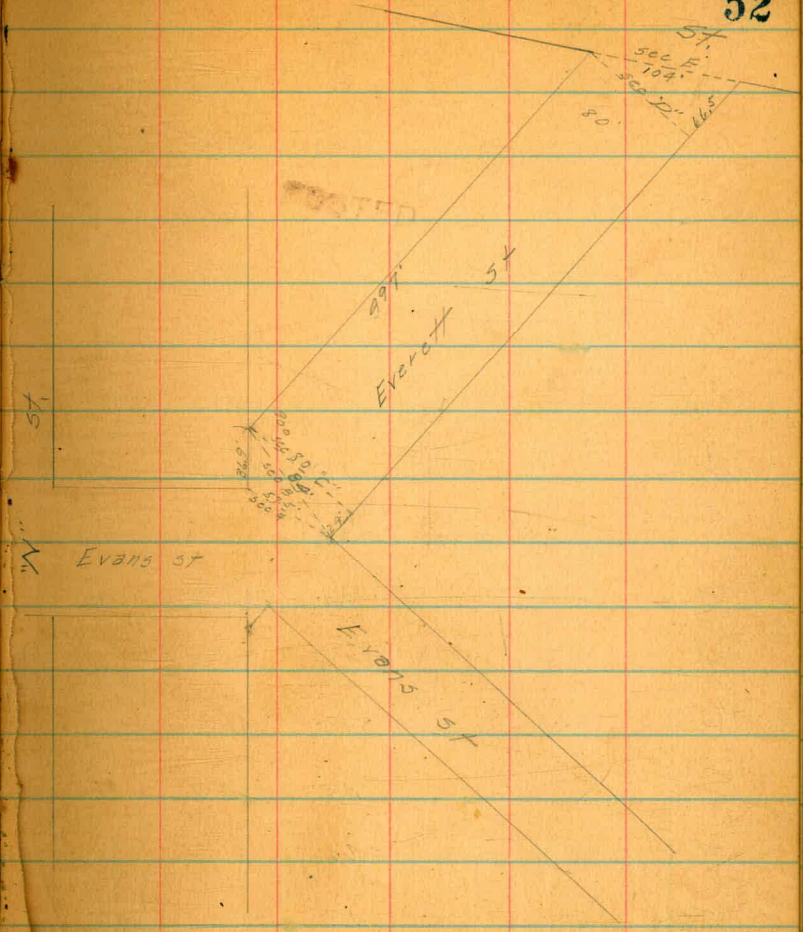
" 5.7 67.1

cut 5.5 67.3

S 5.5 67.3

28th

52



57.

1-sec "C"

S	5.1	67.7
orb	4.8	68.0
"A	4.9	67.9
M	4.9	67.9
"A	5.0	69.8
orb	4.6	68.2
N	4.1	68.7

0+25' E of sec "C"

S	4.9	68.8
orb	4.2	68.6
"A	4.5	68.3
M	4.5	68.3
"A	4.6	68.2
orb	4.7	68.1
S	4.7	68.1

0+50

S	4.1	68.7
orb	4.5	68.3
"A	4.2	68.6
M	3.8	69.0
"A	4.1	68.7
orb	4.2	68.6
N	4.1	68.7

0+75

N	3.6	69.2
orb	3.7	69.1
"A	3.7	69.1
M	3.5	69.5
"A	3.8	69.0
orb	4.1	68.7
S	4.0	68.8

72.75

140

S	3.4	69.4
ctrl	3.7	69.1
"A	3.5	69.3
M	3.1	69.7
"A	3.4	69.9
ctrl	3.7	69.1
N	3.3	69.5

1425

N	3.7	69.1
ctrl	3.7	69.1
"A	3.3	69.5
M	3.3	69.5
"A	3.4	69.4
ctrl	3.3	69.5
S	3.0	69.8

1450

S	2.9	69.9
ctrl	3.2	69.6
"A	3.2	69.6
M	3.3	69.5
"A	2.9	69.9
ctrl	3.0	69.8
N	3.8	69.0

1475

N	3.3	69.5
ctrl	2.3	70.5
"A	2.9	69.9
M	3.3	69.5
"A	3.2	69.6
ctrl	2.9	69.9
S	2.9	69.9

T.P.	2.62	77.09	3.28	69.47
------	------	-------	------	-------

2+0

S	2.0	69.1
erb	2.7	69.6
"A	2.7	69.8
M	2.5	69.6
"A	2.1	69.0
erb	2.5	68.6
N	2.3	68.8

2+25

N	2.6	68.5
erb	2.5	68.6
"A	2.4	68.7
M	2.2	68.9
"A	2.0	69.1
erb	2.1	69.0
S	2.8	69.3

2+50

S	2.2	69.9
erb	2.7	69.4
"A	2.8	69.3
M	6.7	70.4
"A	5.6	71.5
erb	6.3	70.8
N	2.2	68.9

2+75

N	2.2	69.9
erb	2.2	69.9
"A	6.9	70.2
M	6.9	70.2
"A	2.2	69.9
erb	2.2	69.9
S	6.9	70.7

310

S	6.3	70.8
erb	6.9	70.2
"A	7.1	70.0
M	6.9	70.2
"A	7.3	69.8
erb	7.1	70.0
N	7.0	70.1

3125

N	6.8	70.3
erb	7.0	70.1
"A	6.5	70.6
M	6.0	71.1
"A	6.4	70.7
erb	6.4	70.7
S	5.8	71.3

3150

S	5.6	71.5
erb	6.2	70.9
"A	6.4	70.7
M	6.0	71.1
"A	6.0	71.1
erb	5.7	71.4
N	6.5	70.6

3175

N	5.7	71.2
erb	5.2	71.9
"A	5.7	71.4
M	5.8	71.3
"A	6.0	71.1
erb	5.9	71.2
S	5.6	71.5

4+0

S	5.1	72.0
erb	5.3	71.8
"A	5.4	71.7
N	5.6	71.5
"A	4.7	72.4
erb	5.7	71.4
N	5.9	71.2

4+25

N	6.0	71.1
erb	5.7	71.1
"A	4.9	72.2
N	5.1	72.0
"A	5.1	72.0
erb	5.1	72.0
S	4.6	72.5

4+50

57

S	4.5	72.6
erb	5.0	72.1
"A	5.1	72.0
N	5.0	72.1
"A	5.1	72.0
erb	5.4	71.7
N	5.6	71.5

4+75

N	3.0	72.1
erb	4.3	72.8
"A	5.0	
N	4.9	72.2
"A	4.7	
erb	5.0	
S	4.5	72.6

7709

497-x-sec "D"

5 4.5 72.6

Crb 4.8

"A" 4.9

M 4.5 72.6

"A" 4.4

Crb 4.9

N 4.0 73.1

x-sec "E"

N 4.0 73.1

Crb 4.6

"A" 4.0

M 4.1 73.0

"A" 4.2

Crb 4.2

3 3.5 73.6

58

X sect. Bonair ave. South

	West line ^{H.S.} Lapolla Blvd.	
I.P.	1.73	75.13
N. line	-0.3	75.4
	0.4	
	0.9	
C	1.0	74.1
	1.7	
	2.5	
S. line	3.9	71.2
right angles across from (83.95 from NW) S.W. cor. of Bonair & Blvd.		
S. line	3.9	71.2
	2.5	
	2.5	
C	2.1	73.0
	2.3	
	2.2	
N. line	2.1	73.0

Lapolla

75.13

Apr. 20/10

bluids
Barber 59
Taylor

	100' west Blvd. north side	
N. line	2.5	72.6
	2.4	
	2.6	
C	2.5	72.6
	2.8	
	2.9	
S. line	2.9	72.2
150' west.		
S. line	4.7	70.4
	4.6	
	4.6	
C	4.0	71.1
	3.9	
	3.5	
N. line	3.6	71.5

200' west

N line 5.6 69.5

5.9

6.3

C

6.2 68.9

6.8

6.7

S line 6.3 68.8

250' west

S line 7.5 67.6

8.4

8.2

C

7.6 67.5

7.7

7.2

N line 7.0 68.1

300' west

N line 7.9 67.2

8.3

8.8

C

8.8 66.3

9.4

9.3

S line 9.6 65.5

350' west

S line 10.6 64.5

10.1

10.1

C

9.4 65.7

9.2

8.6

N line 8.2 66.9

75.13

400' west

N. line	9.6	65.5
	9.7	
	10.0	
C	10.3	64.8
	10.8	
	10.4	
S. line	11.1	64.0

450' west

	10	
S. line	12.1	63.0
	11.2	
	12.0	
C	11.4	63.7
	11.8	
	11.4	
N. line	10.7	64.4

75.13

61

500' west

N. line	12.3	62.8
	12.6	
	12.7	
C	12.8	62.3
	13.2	
	12.4	
S. line	13.0	62.1

550' west

H.I.

J.P.	0.57	62.79	12.91	62.22
S. line			1.5	61.3
			1.7	
			1.3	
C			1.7	61.1
			1.3	
			1.1	
N. line			1.0	61.8

600' west

N line

2.0 60.8

2.3

2.5

C

2.6 60.2

2.5

2.6

Robin

2.9 59.9

650' west

Robin

4.2 58.6

3.5

3.4

C

3.5 59.3

3.3

3.6

N line

3.4 59.4

700' west

N line

5.1 57.7

5.2

5.3

C

5.4 57.4

5.7

5.6

Robin

5.6 57.2

750' west

Robin

7.0 55.8

6.6

7.6

C

7.0 55.8

6.8

6.7

N line

6.7 56.1

62.79

800' west

n line

8.0 54.5

8.2

c

8.0

8.4 54.4

8.5

8.5

sol line

8.6 54.2

850' west

sol line

10.6 52.2

10.6

10.6

c

10.5 52.3

10.6

10.3

n line

10.2 52.6

62.79

63

900' west

n line

12.7 50.1

12.6

12.8

c

13.0 49.8

13.2

13.1

sol line

13.3 49.5

925' west

J.P.

0.27 ^{HI} 50.36 12.70 50.09

sol line

2.3 48.1

2.7

2.8

c

1.8 48.6

1.5

1.1

n line

1.8 48.6

50.36

950' west

No. line	3.9	46.5
	3.6	
	3.4	
c	3.4	47.0
	4.2	
	5.0	
Robin	4.3	46.1

975' west

Robin	6.1	44.3
	6.7	
	6.1	
c	5.4	45.0
	5.1	
	6.0	
line	5.7	44.7

50.36

64

995' west

line	9.3	41.1
	9.2	
	7.4	
c	7.2	43.2
	7.7	
	8.2	
Robin	7.3	43.1

1000' west

Robin	7.4	43.0
	8.3	
	8.5	
c	7.4	43.0
	7.8	
	9.7	
Robin	8.2	42.2

1025' west.

n line	5.6	44.8
	7.6	
	8.1	
c	8.7	41.7
	11.6	
	11.7	
so line	8.9	41.5

1050' west

so line	13.5	36.9
5' no.	14.6	
	12.8	
	10.1	
c	8.5	41.9
	7.7	
	6.9	
n line	5.7	44.7

1054' west

n line	5.5	44.9
	6.8	
	7.6	
c	8.0	42.4
	9.6	
	12.0	
	13.4	
so line	15.9	34.5

1075' west

so line	12.0	38.4
	10.9	
	9.4	
c	8.0	42.4
	7.4	
	6.9	
n line	6.1	44.3

11400 west (east line alley)

7 line	6.5	43.9
	7.8	
	8.2	
c	8.5	41.9
	8.8	
	10.6	
20 line	11.3	39.1

1115 west (west line alley)

20 line	10.9	39.5
	9.8	
	8.9	
c	9.2	41.2
	9.0	
	8.3	
7 line	7.0	43.4

1135 west

7 line	7.2	43.2
	8.8	
	9.2	
c	9.4	41.0
	9.1	
	9.8	
20 line	11.0	39.4

1150 west

20 line	H ₂ 39.14	6.0	33.1
	H ₁ , 50.36	13.4	
ob + 5"		11.7	
		11.7	
c		11.7	38.7
		11.1	
		10.4	
7 line		9.6	40.8

5036

1175' west

N line

11.6 388

12.3

J.P.

1118

39.14

13.1

12.40 37.96

C

2.7 36.4

3.1

3.6

S. line

4.6 34.5

1193' west

S. line

6.5 31.6

6.0

4.9

C

4.5 34.6

2.9

2.3

N line

1.5 37.6

39.14

67

1200' west

N line

1.9 37.2

3.0

3.3

C

5.5 33.6

5.7

6.8

7.1

0648'

S. line

9.0 30.1

1215' west

S. line

12.7 26.4

8.0

6.8

C

6.9 34.2

6.7

6.0

5.2

0647'

N line

3.7 35.4

1225' west

N. line	7.1	320
	7.6	
	7.8	
C.	7.9	31.2
	8.0	
4+5'	8.4	
	11.8	
Solus	15.3	23.8

1230' west

Solus	23.6	15.5
	12.6	
CB+5'	8.8	
	8.6	
C.	8.1	31.0
	8.2	
	8.2	
N. line	7.8	31.3

1245' west (East line Neptune)

N. line	9.9	29.2
	9.6	
	9.5	
C.	10.1	29.0
	10.9	
	13.3	
	K.I.	
Solus	26.90	20.2

East CB

Solus	6.6	20.3
	4.0	
	39.14	11.9
C.	11.0	28.1
	10.5	
	10.3	
N. line	10.3	28.8

40

39.14

East 1/4

N line

10.9 28.2

11.6

11.5

C

11.7 27.4

12.9

1/4 + 1/4

13.6

HI
26.90

4.3

Soline

11.5 15.4

Center

Soline

10.3 16.6

5.5

Cb + 5'

HI, 39.14

14.5

14.3

C

12.9 26.2

13.0

12.3

N, line

12.0 27.1

J.P.

HI
0.58 26.90 12.82 26.32

69

west 1/4

N line

1.0 25.9

0.9

0.9

C

1.3 25.6

2.5

1/4 + 6'

3.2

5.8

Soline

10.8 16.1

west Cb.

Soline

11.5 15.4

6.0

4.0

C

2.6 24.3

2.0

1.9

N line

2.1 24.8

26,90

west line Neptune

N. line	3.5	23.4
	3.3	
	3.6	
C	4.0	22.9
	6.2	
	6.8	
06+8	7.9	
So. line	10.1	16.8

25' west Neptune

So. line	10.6	16.3
	11.1	
	13.7	
C	13.4	13.5
	11.5	
	10.4	
N line	8.8	18.1

26,90

70

28' west

N. line	9.3	17.6
	10.1	
	11.0	
C	14.3	12.6
	13.7	
	11.6	
So. line	10.7	16.2

36' west

J.P.	1.07	^{K.I.} 16.59	11.38	15.52
So. line			1.0	15.6
			2.6	
			5.2	
C			6.0	10.6
			5.7	
			4.6	
N line			4.8	11.8

16.59

75

50' west

N. line

5.3 11.3

6.6

7.1

C

6.8 9.8

6.6

5.8

S. line

0.7 15.9

75' west

S. line

8.7 7.9

9.0

9.2

C

8.8 7.8

8.5

7.7

N. line

6.9 9.7

16.59

71

100' west

9.8 6.8

10.2

10.6

10.4 6.2

10.9 5.7

10.1

9.3 7.3

see over for diagram

Stream

refine

60'

130'

15'

1100'

Bonair avl.

60'

100'
1160' 2395'

1605'

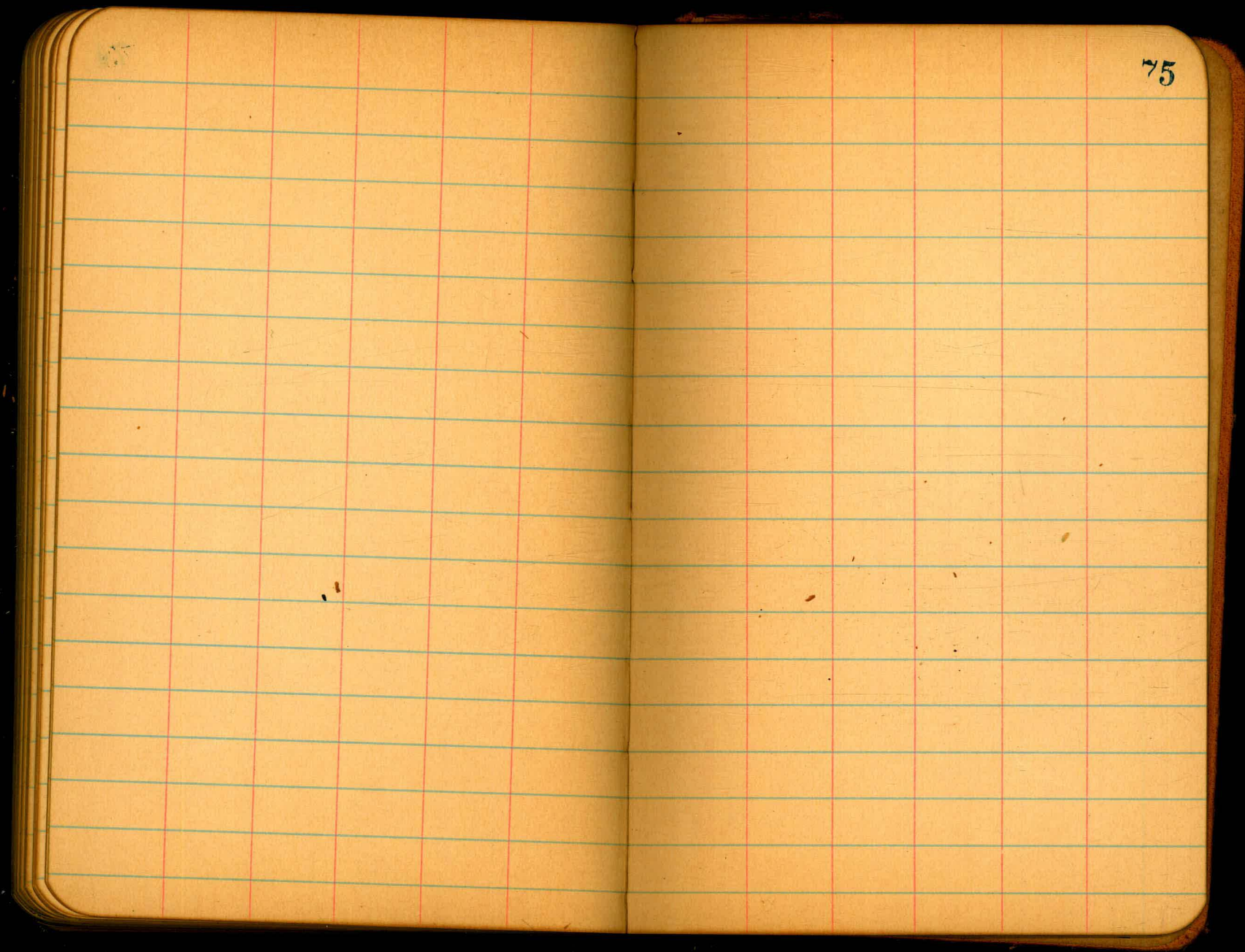
Layolla Blvd.

N
↑

72

Account

74



75

76

75

75

77

87

78

10.11. Sunset to Inglewade No. 28280

R.M.	2.87	285.77		
T.P.	2.39	275.50	12.56	272.21
T.P.	7.56	274.52	8.54	266.96
T.P.			4.19	270.33

R.M.	1.66	282.51		280.85
T.P.	1.79	271.63	12.67	259.84
T.P.	10.89	230.27	12.25	229.38
	12.22	275.11		262.89

262.67

262.67	4.96	257.71
--------	------	--------

262.67	4.96	257.71
--------	------	--------

262.67	5.98	256.69
--------	------	--------

262.67	5.96	256.71
--------	------	--------

262.67	6.10	256.57
--------	------	--------

262.67	8.34	254.33
--------	------	--------

262.67	11.37	251.30
--------	-------	--------

262.67	11.67	251.00
--------	-------	--------

262.67	11.82	250.85
--------	-------	--------

262.67	11.82	250.85
--------	-------	--------

259.82	0.03	259.85
--------	------	--------

259.82	4.22	255.60
--------	------	--------

259.82	5.00	254.82
--------	------	--------

259.82	5.36	254.46
--------	------	--------

259.82	5.56	254.26
--------	------	--------

259.82	9.62	250.20
--------	------	--------

259.82	9.21	250.61
--------	------	--------

259.82	6.50	253.32
--------	------	--------

259.82	6.25	253.57
--------	------	--------

259.82	6.12	253.70
--------	------	--------

259.82	7.16	252.66
--------	------	--------

259.82	8.09	251.73
--------	------	--------

259.82	8.77	251.05
--------	------	--------

259.82	7.49	252.33
--------	------	--------

259.82	8.01	251.81
--------	------	--------

259.82	8.01	251.81
--------	------	--------

259.51	1.87	250.64
--------	------	--------

259.51	2.57	256.94
--------	------	--------

259.51	3.40	256.11
--------	------	--------

259.51	6.54	252.97
--------	------	--------

259.51	8.27	251.24
--------	------	--------

259.51	10.55	248.96
--------	-------	--------

259.51	10.92	248.59
--------	-------	--------

259.51	9.13	250.38
--------	------	--------

259.51	9.35	250.16
--------	------	--------

259.51	9.00	250.51
--------	------	--------

259.51	9.00	250.51
--------	------	--------

259.51	11.37	248.14
--------	-------	--------

259.51	11.37	248.14
--------	-------	--------

259.51	11.10	248.41
--------	-------	--------

259.51	11.10	248.41
--------	-------	--------

259.51	11.10	248.41
--------	-------	--------

275.11	5.52	269.59
--------	------	--------

275.11	5.11	270.00
--------	------	--------

275.11	4.51	270.60
--------	------	--------

275.11	4.11	271.00
--------	------	--------

275.11	3.97	271.14
--------	------	--------

275.11	3.81	271.30
--------	------	--------

275.11	3.81	271.30
--------	------	--------

275.11	0.71	274.40
--------	------	--------

275.11	1.41	273.70
--------	------	--------

275.11	1.01	274.10
--------	------	--------

275.11	2.41	272.70
--------	------	--------

275.11	2.61	272.50
--------	------	--------

275.11	2.61	272.50
--------	------	--------

275.11	2.61	272.50
--------	------	--------

275.11	2.61	272.50
--------	------	--------

275.11	2.61	272.50
--------	------	--------

304.25
2.18
 306.43
12.66
 293.77
2.33
 296.10
273.50
22.60
1.50
 296.10
287.00
9.10

296.10
12.60
 283.50
0.62
 284.12
12.51
 271.61
0.75
 272.36
253.00
18.76

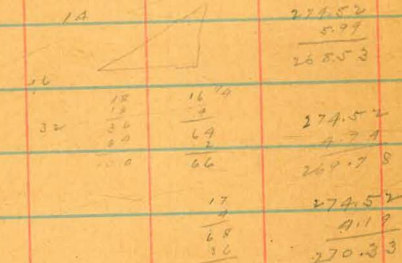
26.5
7.06
 72.75
3.28
 69.47
7.02
 77.09
30.0
27.0
3.5

30.5
~~2.18~~ = 2' N 1/2 W
 + 32.5 = N 1/2 W
 0.4 0.5 = 4' S 1/2 E

72.04
5.06
77.10

274.52
6.22
268.30

4.97



274.52
4.04
 270.98
1.92
 272.60

274.52
5.97
 268.55

274.52
2.74
 269.78

274.52
4.12
 270.33

274.52
5.02
 268.70

104
100
 416
100
 10816

275.52
2.16
 300.68
12.967
 287.72
1.09
 288.76
2.72
 276.04
0.31
 276.35
12.53
 263.82
4.08
 267.90 H.I.
253.40
14.50

267.90
264.00
 3.90

267.90
3.73
 256.63
1.70
 267.90
261.52
 6.38
 267.90
256.63
 11.27

6978
 51.47
 53.77
 59.26
 55.39
 54.97
 38.69
 57.25

187
935
 1250
1122
 1280

264.00
253.40
 10.60
51.7225

5.67
4.33
 1.34
1701
 226.3
2.48346

5.67
57
 3969
2835
 3.2319

267.90
3
 273.3
269.7
 28.4

20
24
 6400
576
 576

26
26
 156
52
 676
6400
 7076
04
 676

26
26
 156
52
 676
6400
 7076
04
 676

26
26
 156
52
 676
6400
 7076
04
 676

267.90
10.99
 257.61
3.77
 261.60
253.40
8.20
 7.

26
26
 156
52
 676
6400
 7076
04
 676

26
26
 156
52
 676
6400
 7076
04
 676

26
26
 156
52
 676
6400
 7076
04
 676

26
26
 156
52
 676
6400
 7076
04
 676

Handwritten calculations and numbers on the left page of the notebook, including:

- 109.34
- 50.86
- 50.71
- 50.46
- 50.03
- 50.26
- 10.63
- 372.29
- 2.325
- 20.6
- 313.1
- 247.75
- 257.66
- 267.21
- 264.07
- 86.10
- 57.1
- 43.8
- 12.17
- 71.0
- 89.1
- 262.89
- 360
- 266.58
- 162.00
- 53.12
- 215.12
- 149.34
- 3150.78
- 25.39
- 270.33
- 277.72
- 278.81
- 420
- 263
- 57
- 250
- 153
- 363
- 257.7
- 30
- 86.0
- 43.8
- 57.1
- 186.9
- 105.24
- 70.8
- 22.33
- 31.055
- 126
- 300.07
- 296.1
- 310
- 87.60
- 89.27
- 44.23
- 85.07
- 93.163
- 8.12
- 717.3
- 1.09
- 80.88
- 80.68
- 79.13
- 71.14
- 83.77
- 10.87
- 7340

Published by H. S. CROCKER COMPANY, Stationers, Drawing Materials, Mathematical Instruments, etc., San Francisco.

TRAVERSE TABLE FOR TRANSIT BOOK.
From 1° to 90° for a distance of 100.

Degrees.	DEGREES.		¼ DEGREE.		½ DEGREE.		¾ DEGREE.		Degrees.
	Lat.	Dep.	Lat.	Dep.	Lat.	Dep.	Lat.	Dep.	
0			100.00	0.44	100.00	0.87	99.99	1.31	89
1	99.98	1.75	99.98	2.18	99.97	2.62	99.95	3.05	88
2	99.94	3.49	99.92	3.93	99.91	4.36	99.88	4.80	87
3	99.86	5.23	99.84	5.67	99.81	6.10	99.79	6.54	86
4	99.76	6.98	99.73	7.41	99.69	7.85	99.66	8.28	85
5	99.62	8.72	99.58	9.15	99.54	9.58	99.50	10.02	84
6	99.45	10.45	99.41	10.89	99.36	11.32	99.31	11.75	83
7	99.25	12.19	99.20	12.62	99.14	13.05	99.09	13.49	82
8	99.03	13.92	98.97	14.35	98.90	14.78	98.84	15.21	81
9	98.77	15.64	98.70	16.07	98.63	16.50	98.56	16.93	80
10	98.48	17.36	98.40	17.79	98.33	18.22	98.25	18.65	79
11	98.16	19.08	98.08	19.51	97.99	19.94	97.90	20.36	78
12	97.81	20.79	97.72	21.22	97.63	21.64	97.53	22.07	77
13	97.44	22.50	97.34	22.92	97.24	23.34	97.13	23.77	76
14	97.03	24.19	96.92	24.62	96.81	25.04	96.70	25.46	75
15	96.59	25.88	96.48	26.30	96.36	26.72	96.25	27.14	74
16	96.13	27.56	96.00	27.98	95.88	28.40	95.76	28.82	73
17	95.63	29.24	95.50	29.65	95.37	30.07	95.24	30.49	72
18	95.11	30.90	94.97	31.32	94.83	31.73	94.69	32.14	71
19	94.55	32.56	94.41	32.97	94.26	33.38	94.12	33.79	70
20	93.97	34.20	93.82	34.61	93.67	35.02	93.51	35.43	69
21	93.36	35.84	93.20	36.24	93.04	36.65	92.88	37.06	68
22	92.72	37.46	92.55	37.86	92.39	38.27	92.22	38.67	67
23	92.05	39.07	91.88	39.47	91.71	39.87	91.53	40.27	66
24	91.35	40.67	91.18	41.07	91.00	41.47	90.81	41.87	65
25	90.63	42.26	90.45	42.66	90.26	43.05	90.07	43.44	64
26	89.88	43.84	89.69	44.23	89.49	44.62	89.30	45.01	63
27	89.10	45.40	88.90	45.79	88.70	46.17	88.50	46.56	62
28	88.29	46.95	88.09	47.33	87.88	47.72	87.67	48.10	61
29	87.46	48.48	87.25	48.86	87.04	49.24	86.82	49.62	60
30	86.60	50.00	86.38	50.38	86.16	50.75	85.94	51.13	59
31	85.72	51.50	85.49	51.88	85.26	52.25	85.04	52.62	58
32	84.80	52.99	84.57	53.36	84.34	53.73	84.10	54.10	57
33	83.87	54.46	83.63	54.83	83.39	55.19	83.15	55.56	56
34	82.90	55.92	82.66	56.28	82.41	56.64	82.16	57.00	55
35	81.92	57.36	81.66	57.71	81.41	58.07	81.16	58.42	54
36	80.90	58.78	80.64	59.13	80.39	59.48	80.13	59.83	53
37	79.86	60.18	79.60	60.53	79.34	60.88	79.07	61.22	52
38	78.80	61.57	78.53	61.91	78.26	62.25	77.99	62.59	51
39	77.71	62.93	77.44	63.27	77.16	63.61	76.88	63.94	50
40	76.60	64.28	76.32	64.61	76.04	64.94	75.76	65.28	49
41	75.47	65.61	75.18	65.93	74.90	66.26	74.61	66.59	48
42	74.31	66.91	74.02	67.24	73.73	67.56	73.43	67.88	47
43	73.14	68.20	72.84	68.52	72.54	68.84	72.24	69.15	46
44	71.93	69.47	71.63	69.78	71.33	70.09	71.02	70.40	45
45	70.71	70.71							
Degrees.	DEGREES.		¼ DEGREE.		½ DEGREE.		¾ DEGREE.		Degrees.
	Dep.	Lat.	Dep.	Lat.	Dep.	Lat.	Dep.	Lat.	