

*Return to City Engineers Office  
City Hall, San Diego, Cal.*

400  
LEVEL

**F. B. 453**

*Return to City Engineers Office  
City Hall, San Diego, Cal.*

*Goodyear Quality*



Published by H. S. CROCKER COMPANY, Stationers, Drawing Materials, and Mathematical Instruments, San Francisco.

Table showing the difference of latitude and departure in running 80 chains at any course from 1 to 90 minutes.

453

MINUTES.	LKS.	MINUTES.	LKS.	MINUTES.	LKS.
1.....	2 $\frac{1}{2}$	21.....	49	41.....	95 $\frac{3}{4}$
2.....	4 $\frac{1}{2}$	22.....	51 $\frac{1}{2}$	42.....	98
3.....	7	23.....	53 $\frac{3}{4}$	43.....	100 $\frac{1}{2}$
4.....	9 $\frac{1}{2}$	24.....	56	44.....	102 $\frac{3}{4}$
5.....	11 $\frac{1}{2}$	25.....	58 $\frac{1}{2}$	45.....	105
6.....	14	26.....	60 $\frac{3}{4}$	46.....	107 $\frac{1}{2}$
7.....	16 $\frac{1}{2}$	27.....	63	47.....	109 $\frac{3}{4}$
8.....	18 $\frac{3}{4}$	28.....	65 $\frac{1}{2}$	48.....	112
9.....	21	29.....	67 $\frac{3}{4}$	49.....	114 $\frac{1}{2}$
10.....	23 $\frac{1}{2}$	30.....	70	50.....	116 $\frac{3}{4}$
11.....	25 $\frac{3}{4}$	31.....	72 $\frac{1}{2}$	51.....	119
12.....	28	32.....	74 $\frac{3}{4}$	52.....	121 $\frac{1}{2}$
13.....	30 $\frac{1}{2}$	33.....	77	53.....	123 $\frac{3}{4}$
14.....	32 $\frac{3}{4}$	34.....	79 $\frac{1}{2}$	54.....	126
15.....	35	35.....	81 $\frac{3}{4}$	55.....	128 $\frac{1}{2}$
16.....	37 $\frac{1}{2}$	36.....	84	56.....	130 $\frac{3}{4}$
17.....	39 $\frac{3}{4}$	37.....	86 $\frac{1}{2}$	57.....	133
18.....	42	38.....	88 $\frac{3}{4}$	58.....	135 $\frac{1}{2}$
19.....	44 $\frac{1}{2}$	39.....	91	59.....	137 $\frac{3}{4}$
20.....	46 $\frac{3}{4}$	40.....	93 $\frac{1}{2}$	60.....	140

TABLE FOR RUNNING ON SLOPES.

In the following table the first column shows the angle, the second the number of links to be added to a chain on the slopes, to make one chain, horizontal measurement.

ANGLE	COR. IN LINKS	ANGLE	COR. IN LINKS	ANGLE	COR. IN LINKS	ANGLE	COR. IN LINKS
0		0		0		0	
4	0.24	11	1.88	18	5.14	25	10.54
5	0.38	12	2.24	19	5.76	26	11.26
6	0.55	13	2.63	20	6.42	27	12.24
7	0.76	14	3.06	21	7.11	28	13.37
8	0.98	15	3.53	22	7.85	29	14.34
9	1.24	16	4.02	23	8.64	30	15.47
10	1.55	17	4.56	24	9.47	35	22.07

Crocker Quality

LEVEL BOOK

No. 400



FROM  
Loring's Book Store

MANUFACTURED BY

*A.S. Crocker & Co.*

SAN FRANCISCO

and

SACRAMENTO



153.7  
Index -

Myrtle

75-

B. M. 5	
N.W. Georgia + Robinson Co. Hub	1321.51 (old)
S.W. " " Cypress " "	269.83 (old)
N.W. Robinson + Florida	279.18 (new)
S.W. Cypress " "	238.95
N.E. Myrtle " "	203.64
E.L. Alabama + Park Line	264.26
W.L. Missi. . . . .	278.49
(200) E.L. Louisiana,	278.86
E.L. Texas	251.47
S.E. Mississippi + Landis	276.98
S.E. Louisiana " "	258.47
S.W. Dwight + Louisiana	280.94
N.E. Myrtle " "	277.19
N.E. Texas + Landis	208.23



brass ply center Reservoir	369.16
" " N. F. "	373.35
" " N. N.	373.87
" "	





1



Levels on Arnold St University to Park Line  
 Arnold 65' wide  
 B.M. RR 304 N.W. Univ. & Arizona 30180  
 Length  
 3/27 Span  
 of Landmark

B.M.	642	305.22	30180
S.U. UNIVERSITY			
E		1.8	306.4
ctr	POSTED	3.0	305.2
W		3.5	304.7
0+25.5			
W		5.2	303.0
ctr		3.8	304.4
E		4.3	303.9
0+50			
E		5.0	303.2
ctr		5.9	302.3
W		6.1	302.1
0+75			
W		6.5	301.7
ctr		6.3	301.9
E		5.5	302.7

		1+0	
E		6.1	302.1
ctr		6.5	301.7
W		7.3	300.9
		1+25	
W		7.7	300.5
ctr		7.0	301.2
E		6.4	301.8
		1+50	
E		6.6	301.6
ctr		7.8	300.4
W		8.4	299.8
		1+75	
W		9.0	299.2
ctr		8.2	300.0
E		7.3	300.9



309.22

2+0

E	8.4	299.8
ctr	8.7	299.5
W	9.8	298.4

2+23

W	10.3	297.7
ctr	9.3	296.9
E	8.2	300.0

2+49.5 = N.L. Wightman 60'

E	7.9	300.3
ctr	9.7	298.5
W	10.9	297.3

Center

W	11.1	297.1
ctr	9.8	298.4
E	8.0	300.2

S.L. Wightman

3

E	8.6	299.6
ctr	10.2	298.0
W	11.8	296.4

0+25.5

W	11.8	296.4
ctr	10.9	297.3
E	9.5	298.7

0+50

E	10.0	298.2
ctr	11.7	296.5
W	12.5	295.7

0+75

W	13.6	294.6
ctr	12.5	295.7
E	10.6	297.6

T.A. 3.66 301.18 10.70 297.52



301.18

1+0

E	3.7	297.5
ctr	5.4	295.8
W	7.1	294.1

1+25

W	2.5	293.7
ctr	5.8	295.4
E	3.7	297.5

1+50

E	5.1	296.1
ctr	6.3	294.9
W	7.9	293.3

1+75

W	7.3	293.9
ctr	6.9	294.3
E	5.3	295.9

2+0

4

E	301.18	5.4	295.8
ctr		7.1	294.1
W		8.3	292.9

2+25

W		2.6	292.4
ctr		7.4	293.8
E		5.4	295.8

2+50

E		5.1	296.1
ctr		7.4	293.8
W		8.5	292.7

2+75

W		8.7	292.5
ctr		7.2	294.0
E		5.8	295.4



301.18

3+0

E	5.4	295.8
ctr	7.0	294.2
W	8.4	292.8

3+25

W	8.6	292.6
ctr	7.9	293.3
E	5.5	295.7

3+50

E	6.3	294.9
ctr	7.5	293.7
W	8.9	292.3

3+75

W	8.9	292.3
ctr	7.7	293.5
E	6.0	295.2

4+0

E	5.0	296.2
ctr	6.8	294.4
W	8.4	292.8

4+25

W	8.2	293.0
ctr	6.6	294.6
E	9.4	296.8

4+50

E	4.1	297.1
ctr	5.4	295.8
W	7.9	293.3

4+75

W	7.7	293.5
ctr	5.7	295.5
E	4.2	297.0

5



301.18

5+0

E	4.1	297.1
ctr	5.6	295.6
W	7.3	293.9

5+25

W	7.7	293.5
ctr	5.6	295.6
E	4.3	296.9

5+50

E	4.5	296.7
ctr	6.4	294.8
W	8.2	293.0

5+75

W	8.7	292.5
ctr	7.0	294.2
E	4.2	297.0

48 297.29

5+99<sup>4</sup>

= N.L. Landis St W

6

E	4.2	297.0
ctr	7.1	294.1
W	8.7	292.5

center

W	8.8	292.4
ctr	7.1	294.1
E	5.7	295.7

S.L. Landis St

E	5.8	295.4
ctr	6.4	294.8
W	9.0	292.2

0+75 S

W	10.0	291.2
ctr	6.8	294.4
E	5.9	295.3



301.18  
0+505

E	6.3	294.9
ctr	7.6	293.6
W	10.1	291.1

0+75

W	10.3	290.9
ctr	9.0	292.2
E	6.9	294.3

1+0

E	6.1	295.1
ctr	8.6	292.6
W	10.5	290.7

1+25

W	10.4	290.8
ctr	8.1	293.1
E	6.1	295.1

1+50

E	6.7	294.5
ctr	8.8	292.4
W	10.4	290.8

1+75

W	10.3	290.9
ctr	8.5	292.7
E	6.9	294.3

2+0

E	5.9	295.3
ctr	7.5	293.7
W	10.0	291.2

T.P. 583 300.07 6.94 294.24

2+25

W	8.7	291.4
ctr	6.5	293.6
E	4.4	295.7

7



300.07

2+50

E	5.2	294.9
ctr	6.6	293.5
W	8.6	291.5

2+75

W	8.5	291.6
ctr	6.4	293.7
E	5.5	294.6

3+0

E	4.9	295.2
ctr	6.9	293.2
W	8.5	291.6

3+25

W	7.1	293.0
ctr	6.1	294.0
E	5.1	295.0

3+50

8

E	300.07	4.2	295.9
ctr		5.9	294.2
W		6.5	298.6

3+75

W		5.8	294.3
ctr		5.1	295.0
E		5.1	295.0

4+0

E		4.8	295.3
ctr		5.0	295.1
W		5.3	294.8

4+25

W		5.4	294.7
ctr		4.5	295.6
E		5.2	294.9



300.07

4+50

E	5.3	294.8
ctr	5.9	294.2
W	6.4	293.7

4+75

W	7.8	292.3
ctr	6.8	293.3
E	6.6	293.5

5+0

E	7.9	292.2
ctr	8.5	291.6
W	9.3	290.8

5+25

W	10.6	289.5
ctr	10.2	289.9
E	9.2	290.9

5+50

9

E	10.4	289.7
ctr	11.2	288.9
W	12.0	288.1

5+75

W	12.7	287.4
ctr	11.8	288.3
E	11.4	288.7

6+00 = N.L. Dwight, 51 60'

E	12.6	287.5
ctr	13.0	287.1
W	13.5	286.6

106 N. E. Cor

T.P. 499 292.50 12.56 287.51 Dwight's Road

center Dwight

W	6.3	286.2
ctr	5.5	287.0
E	5.5	287.0



292.50

S. L. Dwight.

F	5.7	286.8
ctw	5.8	286.7
W	7.1	285.4

0+25 5

W	7.2	285.3
ctw	6.5	286.0
E	5.8	286.7

0+50

F	5.3	287.2
ctw	6.4	286.1
W	7.2	285.3

0+75

W	6.7	285.8
ctw	5.5	287.0
E	4.8	287.7

1+0

10

F	292.50	5.4	287.1
ctw		6.2	286.3
W		6.5	286.0

1+25

W		6.8	285.7
ctw		6.7	285.8
E		6.0	286.5

1+50

F		6.2	286.3
ctw		7.0	285.5
W		7.4	285.1

1+75

W		7.6	284.9
ctw		7.6	284.9
E		7.0	285.5



292.50

2+0

E	7.3	285.2
ctr	8.0	284.5
W	8.3	284.2

2+25

W	9.0	283.5
ctr	8.2	284.3
E	7.8	284.7

2+50

E	8.0	284.5
ctr	9.1	283.4
W	9.2	283.3

2+75

W	9.8	282.7
ctr	9.5	283.0
E	8.7	283.8

T.P.	9.49	292.00	9.99	287.51	406 N.E. Cor Flight Arnold
------	------	--------	------	--------	-------------------------------

T.P.	4.75	287.81	8.94	283.06
------	------	--------	------	--------

287.81

3+0

11

E	4.8	283.0
ctr	4.6	283.2
W	5.9	281.9

3+25

W	6.5	281.3
ctr	6.0	281.8
E	5.4	282.4

3+50

E	5.9	281.9
ctr	6.4	281.4
W	8.1	279.7

3+75

W	7.3	280.5
ctr	7.2	280.6
E	6.3	281.5



287.81

440

F 5.9 281.9

cti 6.5 281.3

W 7.2 280.6

4425

W 7.3 280.5

cti 6.3 281.5

E 5.2 282.6

4450

E 4.8 283.0

cti 5.7 282.1

W 7.2 280.6

4475

W 6.9 280.9

cti 5.6 282.2

E 4.6 283.2

12

540

E 5.0 282.8

cti 6.0 281.8

W 6.9 280.9

5425

W 7.3 280.5

cti POSTED 6.6 281.2

E 5.8 282.0

5450

E 6.7 281.1

cti 6.9 280.9

W 8.1 279.7

5475

W 8.9 278.9

cti 8.0 279.8

E 7.3 280.5



287.91

5+99<sup>5</sup> = N.L. Myrtle, St 60'

0+50

12

F 7.8 280.0

E 10.5 277.3

ctr 8.6 279.2

ctr 10.8 277.0

W 9.4 278.4

W 11.2 276.6

center

0+75

W 9.3 278.5

W 12.2 275.6

ctr 8.6 279.2

ctr 11.6 276.2

E 8.0 279.8

E 11.5 276.3

S.L. Myrtle

T.P. 113 276.27 12.47 275.14

E 8.7 279.1

1+0

ctr 9.0 278.8

E 11.0 275.3

W 9.4 278.4

ctr 21.0 274.3

0+25 J

W 2.1 274.2

W 10.5 277.3

1+25

ctr 9.9 277.9

W 3.5 272.8

E 8.6 278.2

ctr 3.7 272.6

E 3.9 272.9

7-67



276.27

1+50

E	5.0	271.3
ct	5.4	270.9
W	4.6	271.7

1+75

W	6.0	270.3
ct	7.2	269.1
E	7.4	268.9

2+0

E	8.9	267.4
ct	8.7	267.6
W	7.2	269.1

2+25

W	8.0	268.3
ct	10.0	266.3
E	10.8	265.5

2+50

14

E	12.2	264.1
ct	11.5	264.8
W	9.0	267.3

2+75

W	9.8	266.5
ct	12.3	264.0
E	13.3	263.0

3+0

E	14.7	261.6 POSTED
ct	13.3	263.0
W	11.1	265.2

3+48<sup>5</sup> on W.L. 8 3+49<sup>5</sup> on E.L. = Park Line

W	13.0	263.3
ct	15.1	261.2
E	17.6	258.7



15



Levels on Walker St University to Park Ave

B.M. bolt N.E. cor Hamilton Univ 311.51 <sup>3/23</sup> Dunkle  
<sub>1/29</sub> Shaw  
Zambert

B.M. 11.46 322.97 311.51

S.L. University

W 2.9 320.1

ctr 2.4 320.6

E 0.2 322.8

0+25.5

E 1.1 321.0 <sup>POS</sup>

ctr 3.5 319.5

W 6.0 317.0

0+50

W 7.0 316.0

ctr 4.6 318.4

E 2.6 320.4

0+75

E 3.7 319.3

ctr 5.5 317.5

W 7.9 315.1

16

1+0

W 8.9 314.1

ctr 6.8 316.2

E 4.9 318.1

1+25

E 5.9 317.1

ctr 7.6 315.4

W 9.7 313.3

EGGED  
1+50

W 10.4 312.6

ctr 9.0 314.0

E 7.5 315.5

1+75

E 9.4 313.6

ctr 10.7 312.3

W 11.6 311.4



322.47

2+0

W 12.1 318.9

cta 10.5 312.5

E 9.0 314.0

2+75

E 7.7 315.3

cta 10.1 312.9

W 11.3 311.7

2+49<sup>8</sup> = N.L. Wightman 60'

W 9.2 313.8

cta 8.3 314.7

E 5.8 317.2

Center

E 2.7 320.3

cta 5.3 317.7

W 4.3 315.7

S.L. Wightman 5'

17

W 6.9 316.1

cta 3.5 319.5

E 0.2 322.8

T.P. 7.49 328.66 1.80 321.17

0+25 S

E 4.5 324.2

cta 8.1 320.6

W 7.9 316.8

0+50

W 10.9 317.8

cta 7.3 321.4

E 5.3 325.4

0+75

E 2.6 326.1

cta 6.7 322.0

W 10.9 317.8



328.66

1+0

W	10.7	318.0
ctr	6.4	322.3
E	2.6	326.1

1+25

E	2.4	326.3
ctr	6.5	322.2
W	10.9	317.8

POSTED

1+50

W	10.5	318.2
ctr	6.2	322.5
E	2.3	326.4

1+75

E	1.3	327.4
ctr	5.6	323.1
W	9.7	319.0

2+0

W	9.5	319.2
ctr	5.2	323.5
E	1.4	327.3

2+25

E	1.2	327.5
ctr	5.3	323.4
W	9.3	319.4

2+50

W	9.6	319.1
ctr	5.0	323.7
E	1.4	327.3

2+75

E	1.1	327.6
ctr	4.3	324.4
W	8.9	319.8

18



328.66

340

W	9.1	319.6
ctc	4.9	323.8
F	1.3	327.4

3425

F	1.4	327.3
ctc	4.9	323.8
W	9.1	319.6

3450

W	9.6	319.1
ctc	5.4	323.3
F	2.3	326.4

3475

F	3.3	325.4
ctc	6.1	322.6
W	10.5	318.2

19

440

W	10.0	318.7
ctc	6.6	322.1
F	3.7	325.0

4425

F	4.3	324.4
ctc	6.8	321.9
W	10.2	318.5

4450

W	10.9	317.8
ctc	8.3	320.4
F	5.7	323.0

4475

F	6.4	322.3
ctc	8.5	320.2
W	11.3	317.4



328.66

570

W	12.4	316.3
ctr	10.0	318.7
E	7.7	321.0

5725

E	8.1	320.6
ctr	10.2	318.5
W	12.5	316.2

5750

W	12.5	316.2
ctr	10.5	318.2
E	8.0	320.2

5775

E	8.6	320.1
ctr	10.9	317.8
W	14.2	314.5

20

5792 = N.L. Landis St 60'

W	328.66	14.9	313.8
ctr		11.7	317.0
E		8.3	320.4

T.P. 0.79 321.05 8.40 320.26

center

E		1.9	319.2
ctr		4.0	317.1
W		7.9	313.2

S.L. Landis St,

W		8.6	312.5
ctr		5.7	315.4
E		1.9	319.2

0725 J

E		2.6	318.5
ctr		6.2	314.9
W		9.5	311.6



32/05

0+50

W 10.9 310.2

W 6.8 312.3

F 2.8 318.3

0+75

F 4.0 317.1

ctu 8.2 312.9

W 11.9 309.2

1+0

W 12.6 308.5

ctu 9.6 311.5

F 5.6 315.5

1+25

F 6.8 314.3

ctu 10.3 310.8

W 14.7 306.4

21

1+50

W 14.4 306.7

ctu 11.5 309.6

F 7.2 313.9

1+75

F 9.2 311.9

ctu 12.1 309.0

W 15.5 305.6

2+0

W 15.2 305.9

ctu 12.4 308.7

F 9.5 311.6

T.P. 5.51 313.95 12.61 308.44

2+25

F 1.6 312.4

ctu 5.5 309.5

W 8.1 305.9



313.95

2+50

W	8.4	305.6
ctr	5.3	308.7
E	2.4	311.6

2+75

E	2.9	311.1
ctr	6.8	307.2
W	9.0	305.0

3+0

W	9.3	304.7
ctr	6.7	307.3
E	2.9	316.1

3+25

E	2.5	311.5
ctr	6.7	307.3
W	10.1	303.9

3+50

W	9.8	304.2
ctr	6.8	307.2
E	2.4	311.6

3+75

E	3.2	310.8
ctr	7.3	306.7
W	9.6	304.4

4+0

W	10.9	303.1
ctr	7.8	306.2
E	3.8	310.2

4+25

E	4.5	309.5
ctr	8.9	305.1
W	11.2	302.8

22



313.95

4+50

W		12.4	301.6
ctr		10.2	303.8
E		5.9	308.1

4+75

E		7.4	306.6
ctr		11.0	303.0
W		14.2	299.8

5+0

W		14.1	299.7
ctr		12.5	301.5
E		8.8	305.2
T.P.	1.91	304.25	11.61 302.34

5+25

E		0.6	303.7
ctr		3.3	301.0
W		6.1	298.2

23

5+50

W		304.25	6.6	297.7
ctr			4.3	300.0
E			1.4	302.9

5+75

E			1.8	302.5
ctr			5.5	298.8
W			7.0	297.3

5+99.2 = N.W. D Wright St 60'

W			6.5	297.8
ctr			5.4	298.9
E			3.2	301.1

center

E			3.9	300.4
ctr			5.5	298.8
W			7.8	296.5



304.25

S. L. Dwight, St.

W	8.3	296.0
ctr	6.1	298.2
E	3.7	300.6

0 + 25' s of Dwight

E	3.4	300.9
ctr	6.5	297.8
W	8.8	295.5

0 + 50

W	7.8	296.5
ctr	6.4	297.9
E	4.3	300.0

0 + 75

E	4.5	299.8
ctr	6.7	297.6
W	8.5	295.8

140

24

W	8.9	295.4
ctr	7.4	296.9
E	5.3	299.0

T.R.	4.58	305.12	3.71	200.54	Av. L. S. E. Cor Dwight & Walker
------	------	--------	------	--------	-------------------------------------

1 + 25

E	6.8	298.3
ctr	8.8	296.3
W	10.6	294.5

1 + 50

W	10.9	294.2
ctr	9.1	296.0
E	7.3	297.8

1 + 75

E	7.5	297.6
ctr	9.5	295.6
W	11.1	294.0



305.12

2+0

W 11.2 293.9

ctw 8.8 296.3

E 6.0 299.1

2+25

E 5.7 299.4

ctw 8.3 296.8

W 10.9 294.2

2+50

W 10.3 294.6

ctw 7.8 297.3

E 4.9 300.2

2+75

E 4.5 300.6

ctw 7.2 297.9

W 10.1 295.0

25

3+0

W 9.7 295.4

ctw 6.6 298.5

E 4.2 300.9

3+25

E 3.4 301.7

ctw 6.3 298.8

W 9.7 295.4

3+50

W 9.6 295.4

ctw 6.4 298.7

E 2.7 302.4

3+75

E 2.3 302.8

ctw 6.1 299.0

W 10.2 294.9



305.12

4+0

W		10.2	294.9
ctv		6.7	298.4
E		1.4	303.7
T.P.	6.85	310.27	1.70 303.42

4+25

E		7.7	302.6
ctv		11.2	299.1
W		15.2	295.1

4+50

W		14.1	296.2
ctv		10.2	300.1
E		5.4	304.9

4+75

E		3.6	306.7
ctv		8.7	301.6
W		12.2	298.1

26

5+0

W		310.27	11.2 299.1
ctv			7.5 302.8
E			2.6 307.7

5+25

E			11.4 308.9
ctv			6.4 303.9
W			10.6 299.7

5+50

W			10.5 299.8
ctv			5.7 304.6
E			0.8 309.5

T.P.	4.91	314.35	0.83 309.44
------	------	--------	-------------

5+75

E			4.9 309.5
ctv			9.4 305.0
W			14.7 299.7



314.35

5+99

= N.L. Myrtle 60' wide

W

14.6 299.8

ctr

9.4 305.0

E

4.8 309.6

Center

E

4.6 309.8

ctr

9.8 304.6

W

13.9 300.5

S.L. Myrtle,

W

15.0 299.4

ctr

9.7 304.7

E

4.8 309.6

4.82

Nob. S.E. Cor

0+25

Nob. S.E. Cor

E

5.0 309.4

ctr

9.5 304.9

W

15.5 298.9

27

0+50

W

16.3 298.1

ctr

10.2 304.2

E

5.3 309.1

0+75

E

5.5 308.8

ctr

10.6 303.8

W

16.9 297.5

1+0

W

17.8 296.6

ctr

10.5 303.9

E

5.9 308.5

T.P. 111

309.23 6.23 308.12

1+25

E

1.6 307.6

ctr

6.8 302.4

W

13.7 296.0



309.23

1+50

W	13.9	295.3
ctv	7.8	301.4
F	2.7	306.5

1+75

E	3.1	306.1
ctv	9.7	299.5
W	16.5	292.7

2+0

W	18.9	290.8
ctv	11.5	297.7
F	4.5	304.7
T.P.	0.21	302.97
	6.97	302.76

2+25

E	0.1	302.9
ctv	6.5	296.5
W	14.1	288.9

28

2+50

W	15.5	287.5
ctv	8.7	294.3
F	2.1	300.9

2+75

E	3.5	299.5
ctv	10.3	292.7
W	17.2	285.8

3+0

W	19.2	283.8
ctv	12.3	290.7
F	5.3	297.7

3+25

E	6.8	296.2
ctv	14.7	288.3
W	21.3	281.7



302.97  
3+53<sup>2</sup> on W. side & 3+54<sup>2</sup> on E. side = Park Line

W 24.9 278.1

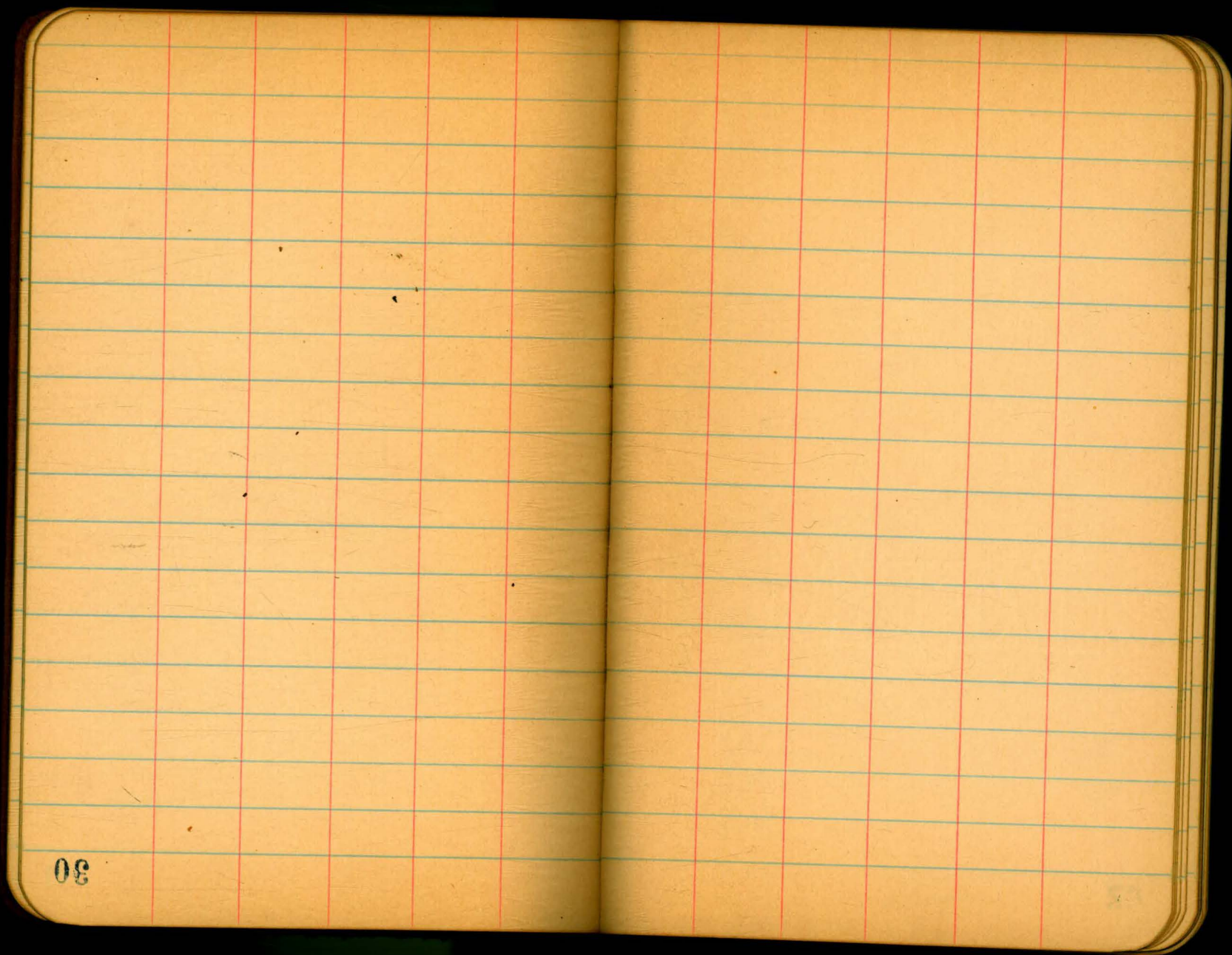
ctw 16.2 286.8

E 8.1 294.9

POSTED

29





30







32







Levels Alabama St University To Park Line  
 Ala. 773.3' wide at Univ & 153.7' wide at UP25, 3/4 length  
 S.M. Ala. N.E. Univ. & Alabama 265.57 1/2 length  
 199 Landert

S.M. 3.77 269.34 265.57

S.L. University

W 4.2 POSTED 265.1

ctr 5.1 264.2

E. 4.7 264.6

0+25 S of Univ.

F 4.9 264.4

ctr 9.2 260.1

W 15.9 253.4

0+50

W 18.9 250.4

ctr 13.9 256.4

F 5.1 264.2

0+75

E 3.8 265.5

ctr 20.5 248.8

W 21.1 248.2

1+0

W 22.5 246.8

ctr 16.8 252.3

E POSTED 3.2 266.1

1+25

F 3.2 266.1

ctr 13.2 256.1

W 24.6 244.7

1+50

W 27.3 242.0

ctr 11.8 257.5

F 3.6 265.7

1+75

F 4.5 264.8

ctr 12.6 256.7

W 25.8 244.0



269.34

4+0

W	28.7	290.6
ctr	13.9	255.4
E	4.8	264.5

2+25

E	4.3	265.0
ctr	14.5	254.8
W	30.5	238.8

2+56

W	31.0	238.3
ctr	14.5	254.8
E	4.8	264.5

2+75

E	5.9	263.4
ctr	15.4	253.9
W	31.6	237.7

35

2+97<sup>2</sup> = N.2. Nightman 60'

W	31.6	237.7
ctr	16.5	252.8
E	6.9	262.4

3+57<sup>2</sup> = S.1. Nightman

E	7.5	261.8
ctr	24.7	244.6
W	31.4	237.9

4+0

W	31.6	237.7
ctr	18.1	251.2
E	6.7	262.6

4+25

E	6.3	263.0
ctr	24.8	244.5
W	31.7	237.6



269.34

4+50

W	31.7	237.6
ctr	28.1	241.2
E	6.1	263.2

4+75

E	5.2	264.1
ctr	26.2	243.1
W	32.1	237.2

5+0

W	32.9	236.4
ctr	22.2	247.1
E	4.8	264.5

5+25

E	4.1	265.2
ctr	15.6	253.7
W	33.7	235.6

5+50

W	35.2	234.1
ctr	4.3	265.0
E	13.0	256.3

5+75

E	4.1	265.2
ctr	11.8	257.5
W	35.6	233.7

T.P	3.72	269.03	4.03	265.31
-----	------	--------	------	--------

6+0

W	29.9	239.1
ctr	11.0	258.0
E	3.8	265.2

6+94 = N.L. Robinson 80'

E	4.0	265.0
ctr	11.2	257.8
W	29.1	239.9

36



26903

6+84 = Center Robinson

W	30.3	238.7
cte	11.8	257.2
E	4.2	264.8

7+24 = S.L. Robinson

E	5.0	264.0
cte	12.3	256.7
W	30.5	238.5

7+50

W	29.1	239.9
cte	12.2	256.8
E	6.1	262.9

7+75

E	8.1	260.9
cte	13.1	255.9
W	28.2	240.8

8+0

37

W	28.0	241.0
cte	14.7	254.3
E	11.1	257.9

POSTED

8+25

E	13.7	255.3
cte	17.1	251.9
W	26.7	242.3
T.P.	0.78	257.04
	12.22	256.26

8+50

W	15.6	241.4
cte	7.5	249.5
E	6.0	251.0

8+75

E	10.2	246.8
cte	10.4	246.6
W	16.1	240.9



257.09

9+0

W 17.2 239.8

ctr 14.5 242.5

E 23.9 233.1

9+25

E 21.3 235.7

ctr 22.1 234.9

W 19.5 237.5

9+61<sup>5</sup> = N.L. Landis 60 wide

W 26.2 230.8

ctr 25.0 232.0

E 18.6 238.4

10+21<sup>5</sup> = S.L. Landis

E 8.0 249.0

ctr 13.2 243.8

W 24.5 232.5

38

10+50

W 15.2 241.8

ctr 9.5 247.5

E 9.1 252.9

10+75

E 2.8 254.2

ctr 7.7 249.3

W 14.5 242.5

11+0

W 14.7 242.3

ctr 7.6 249.4

E 1.6 255.4

11+25

E 2.0 255.0

ctr 7.4 249.6

W 15.4 241.6



257.04

11+50

W 16.8 240.2

ctu 8.1 248.9

F 1.8 255.2

T.P. 4.20 259.83 1.41 255.63

11+75

E 3.6 256.2

ctu 11.2 248.6

W 21.9 238.4

12+0

W 29.8 230.0

ctu 11.5 248.3

E 2.6 257.2

12+25

F 11.3 258.5

ctu 11.8 248.0

W 35.2 227.6

259.83

12+50

W 41.2 218.6

ctu 11.8 248.0

F 0.9 258.9

12+75

F 2.0 257.8

ctu 13.3 246.5

W 41.3 218.5

13+0

W 37.8 222.0

ctu 14.5 245.3

F 3.6 256.3

13+25

F 6.1 253.7

ctu 16.6 243.2

W 33.9 225.9

39



259.93

13+50

W		35.3	224.5
ctr		18.7	240.9
E		9.1	250.7
T.P.	0.26	247.57	12.52 247.31

13+75

E		1.4	246.2
ctr		10.0	237.6
W		26.3	221.3

14+03<sup>5</sup> = N.L. Cypress 80 wide

W		26.0	221.6
ctr		19.2	238.4
E		14.5	233.1

14+43<sup>5</sup> = Center Cypress

E		4.3	243.2
ctr		11.5	236.1
W		27.1	230.5
T.P.	12.67	260.14	0.10 247.97

260.19

14+83<sup>5</sup> = S.L. Cypress.

40

W		39.8	220.3
ctr		14.8	245.3
E		5.6	254.5
T.P.	10.94	269.75	1.33 258.81

15+25

E		8.8	261.0
ctr		19.5	250.3
W		44.5	225.3

15+50

W		37.4	232.4
ctr		15.4	254.4
E		6.8	263.0

15+75

E		5.2	264.6
ctr		13.0	256.8
W		28.5	241.5



269.75

16+0

W	25.1	244.7
ctr	11.5	252.3
E	3.9	265.9

16+22 = N.L. Dright 60' wide

E	3.6	266.2
ctr	10.5	259.3
W	22.7	247.1

16+82 = S.L. Dright

W	21.0	248.8
ctr	8.5	261.3
E	3.6	266.2

17+25

E	4.1	265.7
ctr	8.2	261.6
W	18.1	251.7

17+50

41

W	18.7	251.1
ctr	9.0	260.8
E	4.9	264.9

17+75

E	6.1	263.7
ctr	10.1	259.7
W	19.4	250.4

18+0

W	20.8	249.0
ctr	12.2	257.6
E	7.7	262.1

19+25

E	10.1	259.7
ctr	14.3	255.5
W	23.2	246.6

T.P.	0.32	257.36	12.71	257.09
------	------	--------	-------	--------



257.36

18+50

W	14.3	243.1
ctr	6.2	251.2
E	0.8	256.6

18+75

E	3.7	253.7
ctr	10.0	247.4
W	18.2	239.2

19+0

W	21.8	236.1
ctr	15.2	242.2
E	5.8	251.6

19+25

E	10.4	247.0
ctr	18.8	238.6
W	25.8	231.6

257.36

19+50

W	13.2	234.2
ctr	12.3	245.1
E	5.2	252.2

19+75

E	1.9	255.5
ctr	7.1	250.3
W	16.4	241.0

T.P. 8.77 265.83 0.30 257.06

20+0

W	21.8	244.0
ctr	12.1	253.7
E	8.1	257.7

20+25

E	5.9	259.9
ctr	9.9	255.9
W	18.1	247.7

42



265.83

20+50

W	16.5	249.3
ctr	8.7	257.1
E	4.6	261.2

20+75

E	3.7	262.1
ctr	7.8	258.0
W	15.5	250.3

21+0

W	13.8	252.0
ctr	6.9	258.9
E	3.3	262.5

21+25

E	3.1	262.7
ctr	6.8	259.0
W	13.7	252.1

21+63 = M.L. Myrtle on W. side A/2, 80' wide 43

W	165.83	16.5	249.3
ctr		8.0	257.8
E		3.8	262.0

22+03 = center

E		7.7	258.1
ctr		14.8	251.0
W		26.1	239.7

S.L.

22+48 = Myrtle on W. side A/2.57

W		38.6	227.2
ctr		28.3	237.5
E		12.9	252.9

T.P. 0.22 253.29 12.76 253.07

22+83 = M.L. Myrtle on E. side A/2, 60' wide

E		22.3	231.0
ctr		28.2	225.1
W		30.25	223.1



25329

23+433 - S.L. Myrtle on E side 9/2

W		2.9	244.4
ctr		2.5	250.8
E		4.4	248.9
T.P.	✓ 12.98	266.02	0.25 253.04
T.P.	5.12	268.81	2.33 263.69

23+75

E		9.7	259.1
ctr		10.5	258.3
W		15.3	253.5

24+0

W		14.7	254.1
ctr		9.5	259.3
E		6.3	262.5

24+25

E		5.0	263.8
ctr		9.2	259.6
W		14.3	254.5

44

24+59

W		15.3	253.5
ctr		9.2	259.6
E		4.5	264.3

24+75

E		4.2	264.6
ctr		9.3	259.5
W		16.4	252.4

25+0

W		17.2	251.6
ctr		9.6	259.2
E		4.1	264.7

25+25

E		4.1	264.7
ctr		10.0	258.8
W		18.6	250.2



257412 = N.L.V.P. 5. 87

W

268.81 18.9 249.9

Ch

10.5 258.3

E

4.0 264.8

POSTED



Levels on Oregon St Univ To Park Line  $\frac{3}{10}$  of Shaver  
 Oregon 65' wide Lambert

B.M. E. Brass Bldg. Cor. Univ Oregon		338.85			1 + 0		
B.M.	4.19	343.04	338.85	W	343.04	13.7	329.3
	S. L. Univ			ctr		13.2	329.8
W		3.7	339.3	E		10.3	332.7
ctr	POSTED	3.0	340.0		17 + 25		
E		1.5	341.5	E		8.5	334.5
	0 + 25's of Univ			ctr		9.7	333.3
E		3.1	339.9	W		13.3	329.7 POSTED
ctr		3.8	339.2		1 + 50		
W		3.8	339.6	W		9.9	333.1
	0 + 50			ctr		7.0	336.0
W		5.8	337.2	E		4.7	338.3
ctr		5.6	337.4		1 + 75		
E		4.7	338.3	E		3.9	339.1
	0 + 75			ctr		5.4	337.6
E		7.1	335.9	W		7.2	335.8
ctr		7.9	335.1				
W		8.7	334.3				



343.04

2+0

W	6.1	336.9
ctr	4.8	338.2
E	3.0	340.0

2+25

E	2.8	340.2
ctr	4.1	338.9
W	5.9	337.1

2+49<sup>2</sup> = N.L. Wightman 60'

W	5.3	337.7
ctr	2.9	340.1
E	2.2	340.8

T.P. 7.31 346.00 4.35 338.69

center

E	4.9	341.1
ctr	5.9	340.1
W	7.3	338.7

346.00

S.L. Wightman

47

W	6.4	339.6
ctr	5.2	340.8
E	4.3	341.7

0+25' S of Wightman

E	4.1	341.9
ctr	4.9	341.1
W	5.6	340.4

0+50

W	5.1	340.9
ctr	4.4	341.6
E	3.7	342.3

0+75

E	3.5	342.5
ctr	4.1	341.9
W	5.2	340.8



346.00

1+0

W	5.0	341.0
ctw	4.2	341.8
E	3.3	342.7

1+25

E	3.9	342.6
ctw	4.0	342.0
W	4.8	341.2

1+50

W	4.9	341.1
ctw	4.3	341.7
E	3.2	342.8

1+75

E	3.5	342.5
ctw	3.7	342.3
W	4.9	341.1

48

2+0

W	4.9	341.1
ctw	4.3	341.7
E	3.6	342.4

2+25

E	3.6	342.4
ctw	4.1	341.9
W	5.0	341.0

2+50

W	5.2	340.8
ctw	4.3	341.7
E	3.8	342.2

2+75

E	3.6	342.4
ctw	4.2	341.8
W	5.3	340.7



346.00

3+0

N	5.0	341.0
ctw	4.3	341.7
E	3.8	342.2

3+25

E	3.9	342.1
ctw	5.1	340.9
N	5.6	340.4

3+50

N	5.9	340.1
ctw	4.9	341.1
E	4.3	341.7

3+75

E	4.2	341.8
ctw	5.4	340.6
N	6.3	339.7

49

4+0

N	6.4	339.6
ctw	5.2	340.8
E	4.4	341.6

4+25

E	4.3	341.7
ctw	5.5	340.5
N	6.8	339.2

4+50

N	6.8	339.2
ctw	5.6	340.4
E	4.6	341.4

4+75

E	4.7	341.3
ctw	5.6	340.4
N	7.0	339.0



346.00

5+0

N 7.2 338.8

ctr 6.0 340.0

E 5.1 340.9

5+25

E 4.8 341.2

ctr 5.8 340.2

N 7.5 338.5

5+50

N 7.5 338.5

ctr 6.6 339.4

E 4.7 341.3

5+75

E 4.9 341.1

ctr 5.8 340.2

N 7.2 338.8

5+99<sup>2</sup> = N.L. Landis St 60'

50

N 7.0 339.0

ctr 5.6 340.4

E 4.9 341.1

T.P. 4.25 343.25 7.0 339.00

center

E 1.9 341.4

ctr 3.2 340.1

N 4.7 338.6

S.L. Landis

N 4.3 339.0

ctr 3.1 340.2

E 2.1 341.2

0+255 of Landis

E 2.8 340.5

ctr 3.9 339.4

N 4.9 338.4



343.25

0+50

W	5.9	337.4
cti	4.1	339.2
F	3.2	340.1

0+75

E	3.9	339.4
cti	4.9	338.4
W	7.0	336.3

1+0

W	7.8	335.5
cti	5.7	337.6
F	4.6	338.7

1+25

E	5.4	337.9
cti	6.0	337.3
W	8.8	334.5

51

1+50

W	343.25	8.7	334.6
cti		6.9	336.4
F		4.3	339.0

1+75

E		5.2	338.1
cti		7.2	336.1
W		10.0	333.3

POSTED

2+0

W		10.0	333.3
cti		6.7	336.6
F		5.7	337.6

2+25

E		5.2	338.1
cti		8.2	335.1
W		10.5	332.8



343.25

2+50

W	9.8	333.5
ctr	9.6	334.7
E	5.5	337.8

2+75

E	6.9	336.4
ctr	8.2	335.1
W	11.1	332.2

3+0

W	10.3	333.0
ctr	9.3	334.0
E	7.2	336.1

3+25

E	8.4	337.9
ctr	9.8	333.5
W	11.6	331.7

52

3+50

W	12.0	331.3
ctr	9.7	333.6
E	8.9	334.4

3+75

E	9.5	333.8
ctr	10.3	333.0
W	12.2	331.4

4+0

W	11.9	331.4
ctr	10.3	333.0
E	9.7	333.6

4+25

E	10.2	333.1
ctr	9.9	333.4
W	12.7	330.6

T.P.	2.29	333.81	11.73	331.52
------	------	--------	-------	--------



333.81

4+50

W	3.3	330.5
ctv	1.1	332.7
E	0.4	333.4

4+75

E	1.5	332.3
ctv	2.3	331.5
W	3.9	329.9

5+0

W	4.5	329.3
ctv	2.7	331.1
E	2.7	331.1

5+25

E	3.6	330.2
ctv	2.8	331.0
W	4.4	329.4

5+50

W	6.1	327.7
ctv	5.1	328.7
E	3.7	330.1

5+75

E	3.9	329.9
ctv	5.7	328.1
W	6.4	327.4

5+99<sup>2</sup> = N.L. Dwight St 60'

W	7.50	326.3
ctv	5.30	328.0
E	5.5	328.3

Center

E	5.8	329.0
ctv	7.8	326.0
W	8.1	325.7

53



333.81

S.L. Dwyight St

W	10.6	323.2
ctw	2.7	325.1
F	2.1	325.7

0+25 S of Dwyight

F	9.8	324.0
ctw	10.6	323.2
W	12.1	321.7

0+50

W	14.4	319.4
ctw	12.4	321.4
F	11.0	322.8

0+75

F	12.1	321.7
ctw	14.7	319.1
W	18.2	315.6

1+0

W	18.9	314.9
ctw	15.1	318.7
F	13.9	319.9

1+25

F	12.3	321.5
ctw	14.0	319.8
W	15.7	318.1

1+50

W	14.7	319.1
ctw	12.7	321.1
F	10.2	323.6

1+75

F	10.4	323.4
ctw	11.4	322.4
W	12.6	321.2

54



333.81

2+0

W	12.2	321.6
ctv	11.0	322.8
F	9.6	324.2

2+25

E	8.6	325.2
ctv	8.8	325.0
W	11.9	321.9

2+50

W	10.9	322.9
ctv	9.5	324.3
F	8.5	325.3

2+75

E	7.1	326.7
ctv	8.9	324.9
W	10.7	323.1

55

3+0

W	9.7	324.1
ctv	8.0	325.8
F	7.1	326.7

3+25

E	6.3	327.5
ctv	7.5	326.3
W	8.7	325.1

3+50

W	7.8	326.0
ctv	7.1	326.7
F	6.0	327.8

3+75

E	6.1	327.7
ctv	6.9	326.9
W	8.3	325.5

T.P. 6.68 332.21 8.28 325.53



332.21

4+0

W	6.3	325.9
ct	5.6	326.6
E	3.7	328.5

4+25

E	5.1	327.1
ct	5.9	326.3
W	7.2	325.0

4+50

W	7.5	324.7
ct	5.5	326.7
E	4.7	327.5

4+75

E	5.8	326.4
ct	6.1	326.1
W	7.2	325.0

56

5+0

W	7.3	324.9
ct	6.3	325.9
E	6.2	326.0

5+25

E	5.9	326.3
ct	6.3	325.9
W	8.1	324.1

5+50

W	7.6	324.6
ct	6.3	325.9
E	4.9	327.3

5+75

E	5.5	326.7
ct	6.9	325.3
W	7.4	324.8



332.21

5+98 = N.L. Myrtle 60

W	6.9	325.3
ctr	5.4	326.8
E	5.6	326.6

center

E	5.7	326.5
ctr	5.8	326.4
W	6.9	325.3

S.L. Myrtle

W	6.1	326.1
ctr	6.0	326.2
E	4.8	327.4

0+25 s. of Myrtle

E	4.0	328.2
ctr	5.9	326.3
W	5.9	326.3

57

0+50

W	5.8	326.4
ctr	5.4	326.8
E	5.3	326.9

0+75

E	4.8	327.4
ctr	5.3	326.9
W	5.3	326.9

1+0

W	5.4	326.8
ctr	5.2	327.0
E	5.1	327.1

1+25

E	4.7	327.5
ctr	4.9	327.3
W	5.6	326.6



332.21

1+50

W	6.0	326.2
ctr	4.9	327.3
E	4.9	327.3

1+75

E	5.4	326.8
ctr	5.2	327.0
W	6.3	325.9

2+0

W	6.6	325.6
ctr	6.2	326.0
E	5.1	327.1

2+25

E	6.2	326.0
ctr	5.1	327.1
W	7.0	325.2

58

2+50

W	7.7	324.5
ctr	6.7	325.5
E	6.0	326.2

2+75

E	6.5	325.7
ctr	6.7	325.5
W	6.8	325.4

3+0

W	7.9	324.3
ctr	7.7	324.5
E	7.0	325.2

3+25

E	6.6	325.6
ctr	7.9	324.3
W	8.8	323.4



332141

3+59<sup>4</sup> on E. side 23+58 on N = Park Line

N 9.1 323.1

ctr 7.7 324.5

E 7.1 325.1

59



Levels Wightman St Texas To Oregon <sup>Quint</sup> <sup>1/2</sup> of Shaw  
 Wightman 60' wide  
 B.M. 9. B. S. N. E. Texas 2 UNIV 312.98 <sup>Quint</sup>

+ B H.I. - R.  
 B.M. 2.85 315.83 312.98

E. L. Texas,

N 6.6 309.2

ctr 7.8 308.0

S POSTED 9.1 306.7

0+25 E. of Texas

B 9.3 306.5

ctr 8.1 307.7

N 6.9 308.9

0+50

N. 7.5 308.3

ctr 8.8 307.0

S. 10.0 305.8

0+75

S 11.1 304.7

ctr 9.8 306.0

N 8.6 307.2

1+0

N 10.0 305.8

ctr 11.4 304.4

S 13.2 302.6

1+25

S 15.9 299.9

ctr 14.0 301.8

N 11.9 303.9

T.P. 0.49 303.81 12.51 303.32

1+50

N 3.7 300.1

ctr 5.8 298.0

S 7.2 296.6

1+75

S 10.0 293.8

ctr 8.6 295.2

N 6.7 297.1



303-81

2+0

N		9.2	294.6
ctr		11.3	292.5
S		13.0	290.8

2+25

S		14.7	289.1
ctr		13.6	290.2
N		11.7	292.1
T.P	523	296.09	12.95 290.86

2+50.3 = N.L. Arizona 283 wide

N		5.9	290.2
ctr		7.7	288.4
S		11.5	284.6

Note see Page 63



296.09

## E.L. ARIZONA

S	5.9	290.2
ctr	5.5	290.6
N	4.4	291.7

0+25 E of ARIZONA

N	3.7	292.4
ctr	3.9	291.2
S	4.4	291.7

0+50

S	3.1	293.0		
ctr	2.6	293.5		
N	2.9	293.2		
TP	6.45	301.46	1.08	295.01

0+75

N	6.8	294.7
ctr	6.8	294.7
S	7.3	294.2

301.46

1+0

62

S	6.6	294.9
ctr	5.7	295.8
N	5.9	295.6

1+25

N	5.2	296.3
ctr	5.6	295.9
S	5.9	295.6

1+50

S	5.4	296.1
ctr	5.0	296.5
N	4.5	297.0

1+75

N	4.1	297.4
ctr	4.7	296.8
S	5.3	296.2



301.46

2+0

S	5.3	296.2
ctr	4.7	296.8
N	4.1	297.4

2+25

N	3.9	297.6
ctr	4.7	296.8
S	5.2	296.3

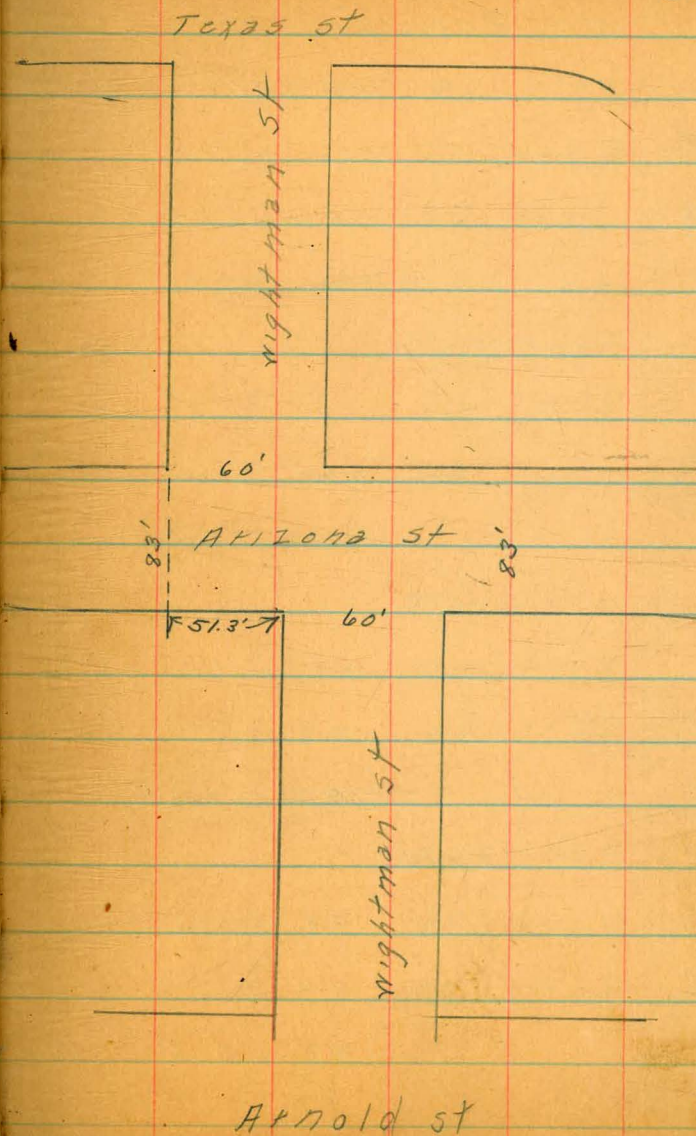
2+50

S	5.3	296.2
ctr	4.6	296.9
N	4.2	297.3

2+64<sup>2</sup> = W.L. Arnold 65' wide.

N	4.12	297.4
ctr	4.2	297.3
S	4.9	296.6

63





301.46

E. L. Arnold

S	1.6	299.9
ctr	1.1	300.4
N	1.0	300.5

T.P.	12.10	312.56	1.00	300.46
------	-------	--------	------	--------

0+25 E of Arnold

N	10.9	301.7
ctr	11.2	301.4
S	11.6	301.0

0+50

S	10.9	301.7
ctr	10.7	301.9
N	10.6	302.0

0+75

N	9.9	302.7
ctr	9.9	302.7
S	9.9	302.7

63

1+0

S	312.56	8.9	303.7
ctr		8.7	303.9
N		8.8	303.8

1+25

N	7.2	305.4
ctr	7.3	305.3
S	7.5	305.5

1+50

S	5.6	307.0
ctr	5.6	307.0
N	5.8	306.8

1+75

N	4.2	308.4
ctr	3.9	308.7
S	3.9	308.7



312.56

2+0

S	1.8	310.8
ctr	1.7	310.9
N	2.5	310.1

T.P. 11.31 323.52 0.35 312.21

2+25

N	11.8	311.7
ctr	11.5	312.0
S	11.1	312.4

2+42 = N.L. Walker St 65' wide

S	7.4	316.1
ctr	7.8	315.7
N	9.8	313.7

E.L. Walker St

N	6.3	317.2
ctr	3.2	320.3
S	0.6	322.9

T.P. 12.17 335.25 0.49 323.08

335.25

0+25 E of Walker St

64

S	10.1	325.2
ctr	11.9	323.4
N	15.3	320.0

0+50

N	12.1	323.2
ctr	9.8	325.5
S	7.2	328.1

0+75

S	5.2	330.1
ctr	7.6	327.7
N	9.2	326.1

1+0

N	6.7	328.6
ctr	4.9	330.4
S	3.2	332.1



335.25

1+25

S	1.7	333.6
ctr	3.3	332.0
N	5.2	330.1

1+50

N	3.3	332.0
ctr	1.6	333.7
S	0.1	335.2

T.P.	2.37	343.21	0.41	334.84
------	------	--------	------	--------

1+75

S	6.4	336.8
ctr	8.0	335.2
N	9.5	333.7

2+0

N	8.3	334.9
ctr	6.4	336.8
S	5.9	337.3

2+25

65

S	4.2	339.0
ctr	5.3	337.9
N	7.3	335.9

2+65 = W.L. Oregon St 65' wide

N	5.5	337.7
ctr	4.4	338.8
S	3.5	339.7



Levels Landis of Arnold To Oregon  
 4/1/09  
 Duane  
 Hans  
 Sigel

B.M. 11.32 305.56 ~~294.29~~ 299.29

E.L. Arnold 51

S 10.1 295.5

ctr 10.1 295.5

N 8.6 297.0

0+25 E of Arnold

N 7.7 297.9

ctr POSTED 9.2 296.4

S 8.5 297.1

0+50

S 7.7 297.9

ctr 7.8 297.8

N 6.9 298.7

0+75

N 6.6 299.0

ctr 6.8 298.8

S 7.1 298.5

1+0

S 305.56 6.0 299.6

ctr 5.9 299.7

N 5.6 300.0

1+25

N 4.4 301.2

ctr 4.1 301.5

S 4.3 301.3

1+50

S 2.7 302.9

ctr 2.7 302.9

N 2.9 302.7

1+75

N 1.1 304.5

ctr 1.3 304.3

S 1.2 304.4

T.P. 12.20 317.48 0.28 305.28

12.20



317.48

2+0

S	11.5	306.0
ctr	11.5	306.0
N	11.4	306.1

2+25

N	8.6	308.9
ctr	9.0	308.5
S	9.2	308.3

2+64<sup>9</sup> = W.L. Walker St 65'

S	4.8	312.7
ctr	4.1	313.4
N	3.4	314.1

T.P. 11.93 329.24 0.17 317.31

E.L. Walker

N	8.6	320.6
ctr	9.9	319.3
S	9.9	319.3

67

0+25E of Walker

S	329.24	7.5	321.7
ctr		8.0	321.2
N		7.6	321.6

0+50

N	4.7	324.5
ctr	5.4	323.8
S	5.5	323.7

0+75

S	3.3	325.9
ctr	3.6	325.6
N	3.2	326.0

1+0

N	0.7	328.5		
ctr	0.5	328.7		
S	1.7	327.5		
T.P.	11.92	341.15	0.01	329.23



34115

1425

S 11.0 330.2

ctr 11.5 329.7

N 11.1 330.1

1450

N 8.8 332.4

ctr 8.5 332.7

S 9.0 332.2

1475

S 6.9 334.3

ctr 7.2 334.0

N 6.8 334.4

470

N 5.9 335.3

ctr 5.6 335.6

S 5.1 336.1

68

2+25

S 3.9 337.3

ctr 4.1 337.7

N 3.1 338.1

2+65 = W. L. Oregon 65'

N 1.9 339.3

ctr 2.4 338.8

S 2.0 339.2

1.94

N.W. hole



Levels Dwight St Texas To Oregon  
 " 60' wide  
 a.m. h. s. f. cor Texas & Dwight

$\frac{4}{12}$  Shank  
 Shaw  
 Deyiel

B.M. 182 297.01 295.19

E. L. Texas

S 1.8 295.2

ctr 1.7 295.3

N 1.6 295.4

0+25' E. of Texas

N 3.5 293.5

ctr 3.7 293.3

S 3.6 293.4

0+50

S 5.8 291.2

ctr 5.8 291.2

N 5.3 291.7

0+75

N 7.8 289.2

ctr 8.2 288.8

S 8.3 288.7

1+0

S 297.01 9.4 287.6

ctr 9.7 287.3

N 9.2 287.8

1+25

POSTED

N 10.7 286.3

ctr 10.9 286.1

S 10.9 286.1

1+50

S 12.3 284.7

ctr 12.4 284.7

N 11.0 286.0

1+75

N 13.0 284.0

ctr 12.9 284.1

S 12.4 284.6

T.P. 7.59 291.67 12.88 284.13



29.67

2+0

S	8.9	282.8
ctr	8.7	283.0
N	8.2	283.5

2+25

N	8.6	283.1
ctr	8.9	282.8
S	9.2	282.5

2+52 = W.L. Arizona st 83' wide

S	9.6	282.1
ctr	8.9	282.8
N	8.8	282.9

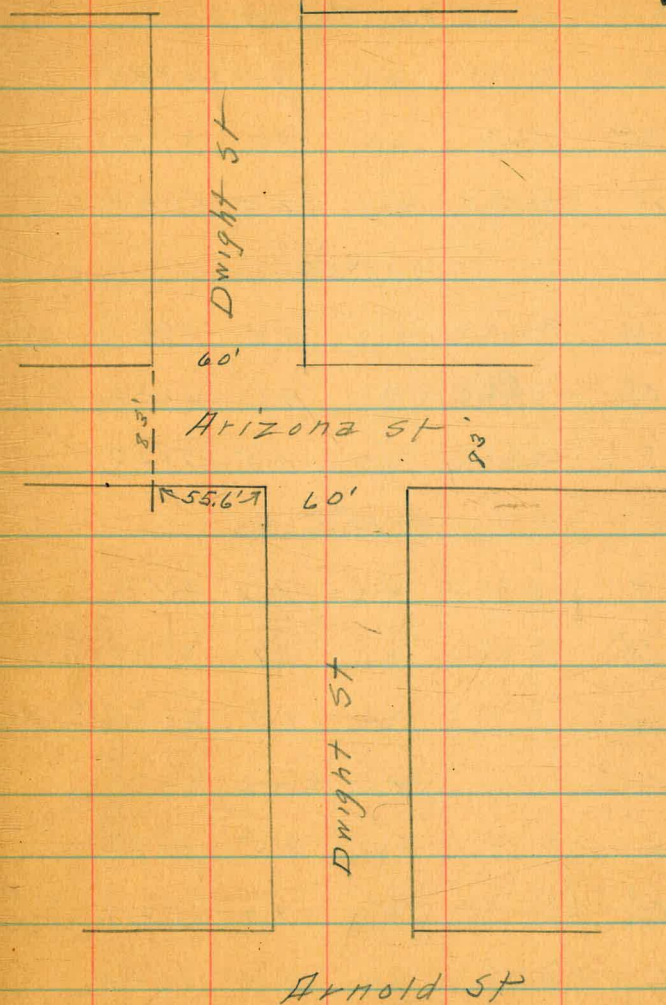
Note - see plot opp page

E.L. ARIZONA

N	7.7	284.0
ctr	7.8	283.9
S	8.8	282.9

Texas St

70





29167

0+25' E. of Arizona

S	7.8	283.9
ctr	7.6	284.1
N	7.5	284.2

0+50

N	7.0	284.7
ctr	7.1	284.6
S	7.5	284.2

POSTED

0+75

S	7.0	284.7
ctr	7.1	284.6
N	6.7	285.0

1+0

N	6.5	285.2
ctr	7.0	284.7
S	7.5	284.2

1+25

71

S	7.9	283.8
ctr	7.0	284.7
N	6.9	285.3

1+50

N	6.2	285.5
ctr	6.9	284.8
S	7.5	284.2

1+75

S	7.4	284.3
ctr	6.8	284.9
N	6.1	285.6

2+0

N	6.8	285.7
ctr	6.5	285.2
S	7.1	284.6



291.67

2+25

S 6.1 285.6

etc 6.2 285.5

N 5.8 285.9

2+64 = W.L. Arnold St 65' wide

N 5.2 286.5

etc 5.6 286.1

S 6.3 285.4

E.L. Arnold

S 5.0 286.7

etc 4.7 287.0

N 4.23 287.5

0+25' E. of Arnold

N 3.8 287.9

etc 3.6 288.1

S 3.7 288.0

0+50

72

S 3.6 288.1

etc 3.0 288.7

N 2.6 289.1

T.P. 11.81 301.83 11.65 290.02

0+75

N 12.7 289.1

etc 12.9 289.1

S 13.4 288.4

1+0

S 11.8 290.0

etc 12.3 289.5

N 11.7 290.1

1+25

N 10.7 291.1

etc 11.4 290.4

S 11.7 290.1



30183

1+50

S	10.7	291.1
ctr	10.4	291.4
N	9.7	292.1

1+75

N	9.1	292.7
ctr	9.5	292.3
S	10.4	291.4

2+0

S	9.1	292.7
ctr	8.6	293.2
N	8.5	293.3

2+25

N	6.4	295.4
ctr	8.0	293.8
S	6.5	295.3

2+64<sup>2</sup> - W.L. Walker 57 65' wide

73

S	5.7	296.1
ctr	5.2	296.6
N	4.0	297.8

E.L. Walker

N	0.7	301.1
ctr	1.4	300.4
S	1.1	300.7
T.P	12.63	313.75
	0.71	301.12

0+25' E of Walker

S	11.5	302.3
ctr	10.9	303.9
N	9.2	304.6

0+50

N	6.2	307.6
ctr	7.4	306.4
S	8.1	305.7



313.75

0+75

S 313.75 5.4 308.4

ctw 9.5 309.3

N 2.5 311.3

T.P 12.80 326.21 8.34 313.41

1+0

N 12.2 314.0

ctw POSTED 14.0 312.2

S 14.6 311.6

1+25

S 11.9 314.3

ctw 11.1 315.1

N 9.9 315.3

1+50

N 7.2 319.0

ctw 8.3 317.9

S 9.5 316.7

326.21

1+75

S 7.5 318.7

ctw 6.2 320.0

N 5.4 320.8

2+0

N 3.6 322.6

ctw 4.1 322.1

S 5.8 320.4

2+25

S 4.6 321.6

ctw 2.3 323.9

N 2.1 324.1

T.P 6.78 331.15 1.84 329.37

2+65 = W. L. Oregon

N 4.7 326.5

ctw 5.4 325.8

S 7.9 323.3

74



Levels on Myrtle St. - Texas To Oregon

Climax  
Shaw  
Requit

B.M. 416 E.L. Texas 8 Packline 281.97

1+0

B.M. 1166 293.13 281.47

E.L. Texas St

S 6.6 286.5

S

6.1 287.0

ctr 6.3 286.8

ctr

5.1 288.0

N POSTED 6.5 286.6

N

4.1 289.0

0+25 E. of Texas

1+25

N 4.8 288.3

N

5.7 287.4

ctr 4.8 288.3

ctr

6.3 286.8

S 5.4 287.7

S

7.0 286.1

0+50

1+50

S 5.4 287.7

S

9.2 283.9

ctr 4.7 288.4

ctr

7.6 285.5

N 3.9 289.2

N

7.0 286.1  
POST

0+75

1+75

N 3.7 289.4

N

9.5 283.6

ctr 4.5 288.6

ctr

10.4 282.7

S 5.2 287.9

S

11.3 281.8



293.13

2+0

S		13.0	280.1
ctr		12.5	280.8
N		11.8	281.5
T.P.	2.34	283.15	12.32 280.81

2+25

N		3.7	279.5
ctr		4.0	279.2
S		5.1	278.1

2+52<sup>S</sup> = W.L. ARIZONA 83' wide

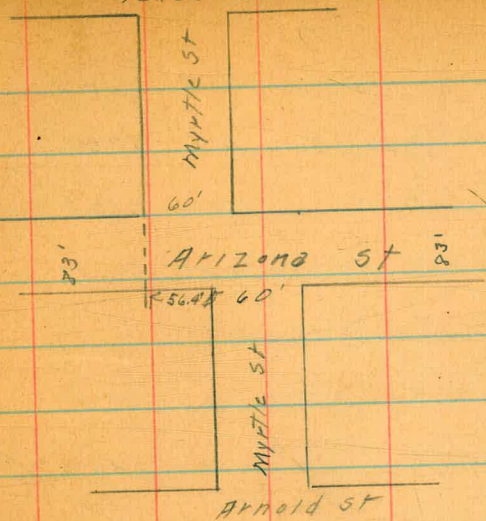
S		7.4	275.8
ctr		6.7	276.5
N		6.1	277.1

Note - see Plot opp. Page

E.L. ARIZONA

N		9.5	273.7
ctr		9.7	273.5
S		10.3	272.9

72x25 ST



76

0+25 E of Arizona

S		11.6	271.6
ctr		10.5	272.7
N		9.9	273.3

0+50

N		11.3	271.9
ctr		11.1	272.1

S		12.0	271.2
---	--	------	-------

0+75

S		12.0	271.2
ctr		12.1	271.1
N		10.5	272.7



283.15  
1+0

N		10.1	273.1
ctr		11.2	272.0
S		13.7	269.5
T.P.	11.71	284.58	10.28 272.87

406 S.E. Cor  
41123 Myrtle

1+25

S		11.6	273.0
ctr		11.0	273.6
N		10.6	274.0

1+50

N		9.5	275.1
ctr		9.7	274.9
S		10.1	274.5

1+75

S		8.8	275.8
ctr		8.6	276.0
N		8.4	276.2

77

2+0

N		7.7	276.9
ctr		7.7	276.9
S		7.9	276.7

2+25

S		7.4	277.2
ctr		7.1	277.5
N		6.8	277.8

2+64 = W.L. Arnold St 65'

N		6.1	278.5
ctr		6.0	278.6
S		6.1	278.5

E.L. Arnold

S		5.4	279.2
ctr		4.7	279.9
N		4.5	280.1

0+25 E. of Arnold

N		3.8	280.8
ctr		4.2	280.4
S		5.2	279.4



284.58

0+50

S		4.4	280.2
ctv		3.3	281.3
N		3.0	281.6

0+75

N		11.8	282.8
ctv		2.4	282.2
S		3.4	281.2
T.P	12.25	296.89	0.19 284.44

1+0

S		15.4	281.5
ctv		13.8	283.1
N		12.7	284.2

1+25

N		11.2	285.7
ctv		12.9	284.0
S		14.8	282.1

78

1+50

S		13.1	283.8
ctv		11.7	285.2
N		9.5	287.4

1+75

N		7.1	289.8
ctv		9.8	287.1
S		11.5	285.4

2+0

S		8.8	288.1
ctv		5.8	291.1
N		4.6	292.3

2+25

N		2.0	294.9
ctv		3.0	293.9
S		4.2	292.7

T.P	12.28	308.66	0.51 296.38
-----	-------	--------	-------------



308.66

2+647 = W.L. Walker

S		9.2	399.5
ctu		7.8	399.9
N		8.5	300.2
T.P.	11.81	319.95	0.52 308.14

E.L. Walker

N		10.3	309.7
ctu		10.0	310.0
S		10.2	309.8

0+25 E. of Walker

S		6.7	313.3
ctu		6.6	313.4
N		6.9	313.1

0+50

N		3.3	316.7
ctu		3.5	316.5
S		3.4	316.6
T.P.	11.85	330.73	1.10 318.95

330.73

79

0+75

S		11.9	328.8
ctu		11.5	328.9
N		11.8	328.9

1+0

N		9.2	321.5
ctu		9.2	321.5
S		9.5	321.2

1+25

S		7.1	323.6
ctu		7.4	223.3
N		7.5	323.2

1+50

N		6.2	324.5
ctu		6.3	224.4
S		6.7	324.0



330.73

1475

S	5.4	325.3
ctw	5.6	325.1
N	6.3	324.4

2+0

N	5.9	324.8
ctw	7.6	326.1
S	4.8	325.9

2+25

S	3.9	326.8
ctw	4.8	325.9
N	5.3	325.6

2+66 = N.L. Oregon 65' wide

N	5.3	325.6
ctw	5.2	325.5
S	4.4	326.3

330.85

330.21

3.64

330.73

5.45

325.29



