

443

400
LEVEL

F.B. 443

Published by H. S. CROCKER COMPANY, Stationers, Drawing Materials, and Mathematical Instruments, San Francisco.

Table showing the difference of latitude and departure in running 80 chains at any course from 1 to 60 minutes.

MINUTES.	LKS.	MINUTES.	LKS.	MINUTES.	LKS.
1	2½	21	49	41	95½
2	4½	22	51½	42	98
3	7	23	53½	43	100½
4	9½	24	56	44	102½
5	11½	25	58½	45	105
6	14	26	60½	46	107½
7	16½	27	63	47	109½
8	18½	28	65½	48	112
9	21	29	67½	49	114½
10	23½	30	70	50	116½
11	25½	31	72½	51	119
12	28	32	74½	52	121½
13	30½	33	77	53	123½
14	32½	34	79½	54	126
15	35	35	81½	55	128½
16	37½	36	84	56	130½
17	39½	37	86½	57	133
18	42	38	88½	58	135½
19	44½	39	91	59	137½
20	46½	40	93½	60	140

MICROFILMED
TABLE FOR RUNNING ON SLOPES.

In the following table the first column shows the angle, the second the number of links to be added to a chain on the slopes, to make one chain, horizontal measurement.

ANGLE	COR. IN LINKS	ANGLE	COR. IN LINKS	ANGLE	COR. IN LINKS	ANGLE	COR. IN LINKS
°		°		°		°	
4	0.24	11	1.88	18	5.14	25	10.54
5	0.38	12	2.24	19	5.76	26	11.26
6	0.55	13	2.63	20	6.42	27	12.24
7	0.76	14	3.06	21	7.11	28	13.37
8	0.98	15	3.53	22	7.85	29	14.34
9	1.24	16	4.02	23	8.64	30	15.47
10	1.55	17	4.56	24	9.47	35	22.07



LEVEL BOOK

No. 400

Book 443



MANUFACTURED BY

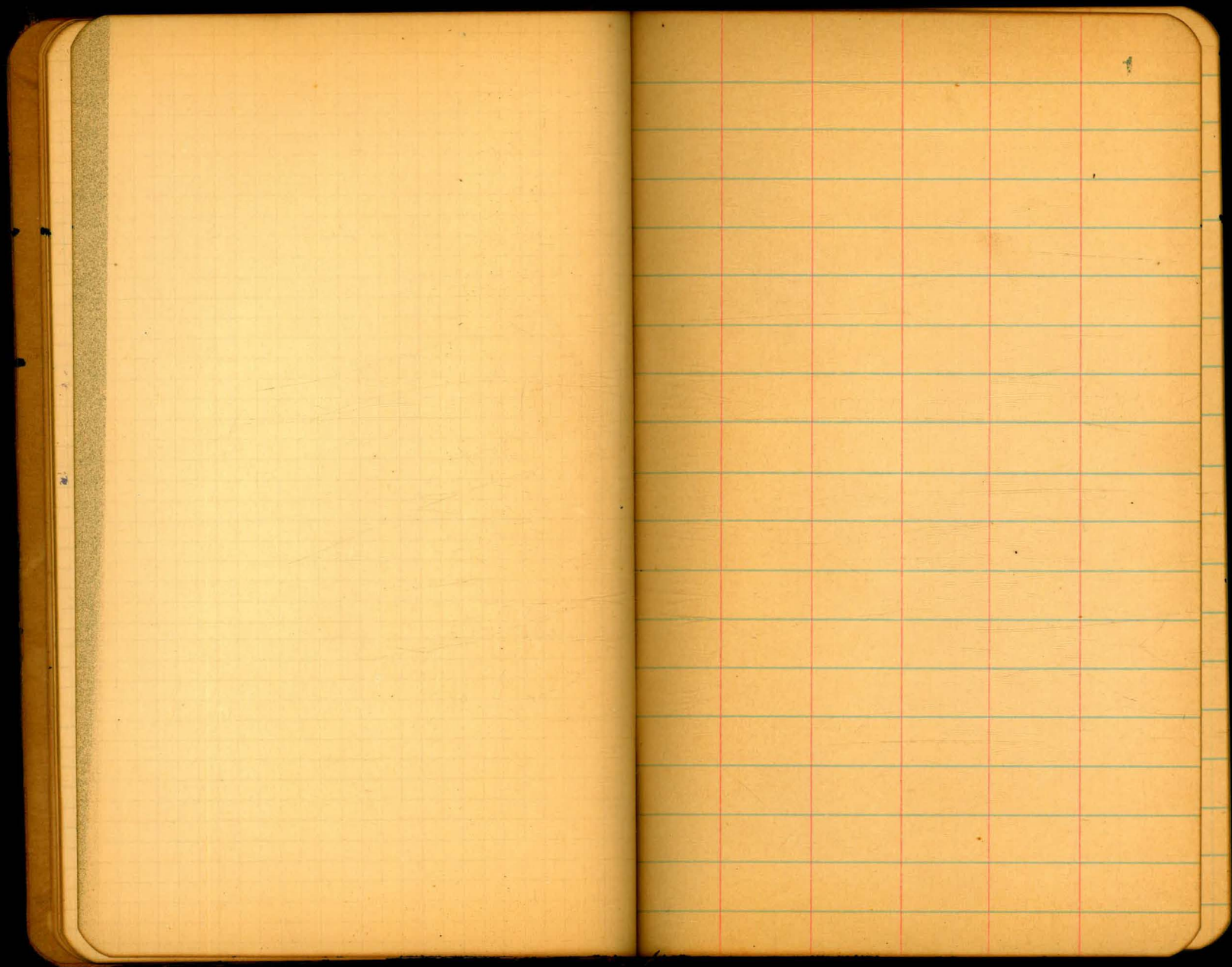
H.S. Crocker Co.

SAN FRANCISCO

and

SACRAMENTO

FROM
Loring's Book Store



X Sec. Alabama St. From S.L. University
 to Park Line for a 60' street 10' 1/4
 Monument N.E. Cor. Alabama University Ave
 B.M. 3.01 268.58 265.57

South Line University

E	4.0
cb	4.3
1/4	4.6
M	4.9
1/4	4.9
cb	4.8
W	4.6

+25 S

W	7.6
cb	6.1
1/4	5.1
M	5.3
1/4	5.2
cb	4.6
E	4.1

268.58

0+50

2

E	4.2
cb	5.1
1/4	5.4
M	5.6
1/4	5.7
cb	7.5
W	15.6

0+75

W	12.4
cb	7.1
1/4	6.3
M	5.8
1/4	5.8
cb	4.5
E	3.2

26858

1+0

E	2.6
cb	4.2
1/4	5.3
M	6.0
1/4	6.4
cb	6.9
W	10.1

1+25

W	8.3
cb	7.1
1/4	6.3
M	5.2
1/4	4.3
cb	3.2
E	2.5

26858-

1+50

E	2.9
cb	3.7
1/4	4.5
M	5.4
1/4	6.4
cb	7.4
W	8.1

1+75

W	9.1
cb	8.1
1/4	7.2
M	6.1
1/4	5.1
cb	4.3
E	3.7

3

26858

2+0

E	4.0
erb	4.8
1/4	5.6
M	6.4
1/4	7.3
erb	8.4
W	9.5

2+25

W	10.4
erb	8.9
1/4	7.5
M	6.6
1/4	5.7
erb	4.6
E	3.8

T.P. 4.21. 26853 4.26 26432

26853

2+50

E	4.0
erb	5.4
1/4	6.0
M	6.7
1/4	7.9
erb	9.8
W	11.0

2+75

W	11.8
erb	10.6
1/4	9.4
M	8.2
1/4	7.2
erb	6.2
E	5.2

4

268.53

2+976=N. Line Wightman on the East
60' wide 10' 1/2"

E	6.1
crb	7.1
1/4	8.0
M	8.9
1/4	10.2
crb	11.2
W	12.3

North curb

W	12.3
crb	11.4
1/4	10.3
M	9.4
1/4	8.5
crb	7.5
E	6.8

268.53

North 1/4

5

E	7.4
crb	8.3
1/4	9.1
M	9.9
1/4	10.6
crb	11.6
W	12.5

Center

W	13.0
crb	12.1
1/4	11.3
M	10.8
1/4	10.8
crb	10.4
E	10.5

26853

South 1/4

E	8.3
cb	11.0
1/4	13.3
M	15.0
1/4	13.5
cb	73.3
W	14.9

TP	1.65	264.25	5.93	262.60
----	------	--------	------	--------

South Curb

W	14.9
cb	12.5
1/4	12.0
M	8.6
1/4	6.6
cb	4.5
E	2.8

26425

South Line Wightman on E

6

E	2.4
cb	3.9
1/4	5.6
M	7.8
1/4	9.4
cb	11.2
W	13.1

0+25

W	9.2
cb	7.2
1/4	5.6
M	5.1
1/4	4.2
cb	3.1
E	1.8

264,25

0+50

E			1.3	
rb			2.5	
1/4			3.1	
M			4.0	
1/4			5.3	
rb	1		6.7	
W			7.6	
T.P.	6.90	267,78	3.37	260.88

0+75

W			11.3	
rb			9.4	
1/4			8.1	
M			7.2	
1/4			6.0	
rb			5.5	
E			4.5	

267,78

1+0

E			4.3	
rb			5.4	
1/4			6.3	
M			7.5	
1/4			8.0	
rb			10.0	
W			15.7	

1+25

W			11.0	
rb			8.7	
1/4			7.4	
M			6.5	
1/4			5.5	
rb			4.4	
E			3.4	

7

	1750	
E	2.9	
orb	3.9	
1/4	5.2	
M	6.1	
1/4	7.0	
orb	7.8	
W	9.1	

	1775	
W	8.4	
orb	7.2	
1/4	6.3	
M	5.5	
1/4	4.5	
orb	4.5	
E	2.4	

TP 3.24 268.84 2.18 265.60

26884

8

	2700	
E	3.7	
orb	4.0	
1/4	5.2	
M	5.9	
1/4	6.8	
orb	7.5	
W	8.9	

	2725	
W	8.5	
orb	7.3	
1/4	6.4	
M	5.7	
1/4	5.1	
orb	4.4	
E	3.9	

2+50

E	3.6
cb	4.3
1/4	4.9
M	5.5
1/4	6.2
cb	6.8
W	7.6

2+86⁺ On the East = M.L. Robinson W. 5' 1/4"
 = 6+44 W 80' Wide

W	7.6
cb	6.5
1/4	5.8
M	5.3
1/4	4.8
cb	4.3
E	3.8

N. curb Robinson

9

E	3.8
cb	4.4
1/4	4.6
M	5.2
1/4	5.8
cb	6.6
W	7.8

North 1/4

W	7.8
cb	6.6
1/4	5.8
M	5.2
1/4	4.7
cb	4.3
E	3.9

Center

E	3.9
erb	4.3
1/4	4.6
M	5.3
1/4	5.9
erb	6.7
W	8.0

- South 1/4

W	8.5
erb	7.1
1/4	6.0
M	5.2
1/4	4.6
erb	4.5
E	4.2

South Curb

10

E	4.3
erb	7.6
1/4	4.9
M	5.4
1/4	6.0
erb	7.2
W	8.6

3+66^mE = 7+24^mW S.L. Robinson St

W	8.8
erb	7.6
1/4	6.5
M	5.8
1/4	5.2
erb	4.9
E	4.7

0+25 S

E	5.9
erb	6.2
1/4	6.3
M	6.8
1/4	7.6
erb	8.4
W	9.7

0+50

W	10.7
erb	10.0
1/4	9.1
M	8.5
1/4	8.2
erb	8.0
E	7.9
T.P.	1.79
	262.54
	8.09
	260.75

0+75

E	4.5
erb	4.2
1/4	4.4
M	4.8
1/4	5.1
erb	5.6
W	6.1

1+0

W	8.8
erb	8.4
1/4	8.1
M	8.0
1/4	7.6
erb	7.3
E	7.2

11

26254

1+25

E	11.5
rb	11.3
14	11.5
M	11.3
14	11.2
rb	11.0
W	11.5

T.P. 147 251.64 12.37 250.17

1+50

W	4.2
rb	3.9
14	3.7
M	3.5
14	3.8
rb	4.2
E	4.8

1+75

12

F	18.5
rb	15.8
14	11.5
M	10.4
14	10.1
rb	9.9
W	8.5

2+0

W	17.0
rb	16.7
14	17.0
M	18.4
14	18.7
rb	18.5
E	17.3

T.P. 8.55 247.98 12.21 239.43 on stone ^{near} N.E. end

247.98

= 9+592 on W
- 2.73573 = N Line Landis on E

E	10.0
erb	12.0
1/4	12.8
M	12.8
1/4	13.1
erb	13.9
W	16.4

North curb

W	11.3
erb	10.3
1/4	9.9
M	10.0
1/4	9.6
erb	9.0
E	7.2

N 1/4

13

E	6.1
erb	7.1
1/4	7.8
M	8.3
1/4	8.7
erb	9.1
W	9.8

Center

W	9.0
erb	8.3
1/4	7.9
M	7.3
1/4	6.1
erb	5.2
E	3.8

24798

S 1/4

F	2.2
rb	3.4
1/4	4.4
M	5.3
1/4	6.0
rb	6.4
W	7.3

S Curve

W	5.9
rb	5.4
1/4	4.9
M	3.9
1/4	2.8
rb	1.7
E	0.3

T.P. 11.41 259/12 0.27 247.71

259.12

10 + 193 on W

2 + 95³ on East = South Line Land's

14

E	10.1
rb	11.2
1/4	12.0
M	12.9
1/4	14.1
rb	14.7
W	14.9

0 + 25 S

W	10.6
rb	9.9
1/4	9.5
M	8.9
1/4	8.0
rb	7.3
E	6.3

25912

0+50

E	4.9
erb	5.8
11A	6.4
M	7.0
11A	8.1
erb	8.7
W	9.1

0+75

W	8.4
erb	7.7
11A	7.1
M	6.3
11A	5.4
erb	4.8
E	3.7

25912

1+0

E	4.0
erb	4.7
11A	5.5
M	6.3
11A	7.0
erb	7.5
W	8.1

1+25

W	8.5
erb	7.8
11A	7.0
M	6.3
11A	5.6
erb	4.8
E	3.9

15

25912

1+50

E	2.9
cb	4.0
1/4	5.1
M	5.9
1/4	6.6
cb	6.9
W	7.8

1+75

W	8.4
cb	7.3
1/4	6.4
M	5.3
1/4	4.2
cb	3.0
E	1.9

25912

2+0

E	0.6
cb	1.9
1/4	3.1
M	4.6
1/4	5.9
cb	6.7
W	8.2

2+25

W	9.0
cb	7.2
1/4	5.7
M	4.4
1/4	3.0
cb	1.5
E	0.01

T.P. 207 258.99 2.17 256.95

16

25899

2750

E	1.2
erb	2.6
1/4	3.9
M	5.1
1/4	6.7
erb	8.2
W	10.0

2775

W	11.1
erb	9.4
1/4	8.1
M	7.1
1/4	5.8
erb	4.1
E	2.6

25899

370

17

F ^{int}	5.2
erb	6.5
1/4	7.9
M	8.9
1/4	10.2
erb	11.4
W	12.9

3125

W	14.6
erb	13.5
1/4	12.6
M	11.6
1/4	10.5
erb	9.3
E	8.4

TP 1.52 24765 12.86 24613

247.65

3780

E	1.4
erb	1.8
1/4	2.7
M	3.3
1/4	3.7
erb	4.8
W	5.9
= 14+035 on West	
3784 ² = N. Line Cypress on West	
80' Wide 5' 1/2"	

W	17.3
erb	16.2
1/4	15.2
M	15.4
1/4	14.6
erb	14.0
E	14.3

N curb

18

E	14.2
erb	15.0
1/4	15.6
M	16.0
1/4	17.3
erb	19.5
W	210.6

N. 1/4

W	17.9
erb	16.8
1/4	16.1
M	15.5
1/4	14.5
erb	13.6
E	12.5

247.65

Center

E	4.3
orb	5.5
1/4	5.8
M	6.6
1/4	7.7
orb	8.8
W	9.5

T.P. 12.79 259.56 0.88 246.77

South 1/4

W	15.7
orb	14.6
1/4	13.8
M	12.9
1/4	12.0
orb	11.3
E	10.4

259.56

South Curb

19

E	9.5
orb	10.3
1/4	11.1
M	12.2
1/4	12.9
orb	13.8
W	14.8

South Line Land is on E = 14 + 83.5 on the W

W	12.3
orb	10.9
1/4	9.4
M	8.2
1/4	7.0
orb	6.2
E	4.9

5.7	E	
6.6	cal	
7.6	1/4	
8.6	M	
9.6	1/4	
10.4	cal	
11.5	W	
17.0		
9.5	W	
8.8	cal	
8.3	1/4	
7.1	M	
6.2	1/4	
5.2	cal	
4.2	E	

269.83

0475

0.00	E	
1.5	cal	
2.9	1/4	
4.2	M	
5.1	1/4	
6.0	cal	
7.6	W	
0.56	TP	25900
14.3	W	
12.5	cal	
11.0	1/4	
9.9	M	
9.2	1/4	
8.5	cal	
7.6	E	

259.62

0+255

269.33

16+22 on W

60' Wide

10' 11.25"

1738.5 = E = N Line Dwight St

E	3.1
erb	4.1
1/4	4.9
M	5.7
1/4	6.4
erb	7.1
W	7.9

N carb

W	7.7
erb	6.8
1/4	5.9
M	5.4
1/4	4.6
erb	3.8
E	3.0

269.33

N 1/4

21

E	2.9
erb	3.9
1/4	4.6
M	5.2
1/4	5.6
erb	6.6
W	7.3

Oentex

W	7.2
erb	6.4
1/4	5.7
M	5.1
1/4	4.5
erb	3.8
E	2.8

T.P. 4.42 270.79 2.96 266.37

270.7.9

South 1/4

E	4.5
erb	5.3
1/4	6.1
M	6.5
1/4	7.2
erb	7.9
W	8.8

S. Curb

W	8.4
erb	7.6
1/4	7.0
M	6.4
1/4	6.1
erb	5.3
E	4.5

16+82 on the West

1+98.5 on E-S Line of Dwight St

22

E	4.6
erb	5.5
1/4	6.0
M	6.4
1/4	7.1
erb	7.7
W	8.2

0+25

W	8.1
erb	7.6
1/4	7.2
M	6.6
1/4	6.2
erb	5.7
E	4.8

27079

E	5.3
cb	6.1
14	6.7
M	7.2
14	7.6
cb	8.1
W	8.4

0+7.5

W	9.3
cb	8.9
14	8.4
M	8.1
14	7.4
cb	6.9
E	6.3

27079

23

1+0

E	7.5
cb	8.2
14	8.9
M	9.3
14	9.8
cb	10.3
W	10.7

1+2.5

W	12.0
cb	11.7
14	11.5
M	10.6
14	10.4
cb	10.0
E	9.3

TP

1.60

260.93

1146

25933

at 514.160

on top of 2000 ft

260.93

1+50

E	1.9
ab	2.4
1/4	2.8
M	3.9
1/4	4.6
ab	5.2
W	5.5

1+75

W	9.6
ab	9.6
1/4	8.5
M	7.6
1/4	6.8
ab	5.8
E	4.9

260-93

2+0

24

E	7.9
ab	8.6
1/4	9.7
M	10.8
1/4	11.7
ab	12.6
W	13.3

TP 4.69 255.31 12.31 248.62

2+25

W	12.0
ab	10.7
1/4	9.1
M	8.4
1/4	7.2
ab	6.0
E	4.4

255.31

2+50

E	6.4,
cb	8.8
1/4	9.0
M	9.4
1/4	10.2
cb	11.2
W	12.4

2+75

W	7.1
cb	5.9
1/4	4.8
M	3.8
1/4	3.0
cb	2.3
E	1.7

T.P.	11.78	266.10	0.99	257.32
------	-------	--------	------	--------

266.10

3+0

E	10.0
cb	10.2
1/4	10.4
M	10.9
1/4	11.5
cb	12.2
W	13.4

3+25

W	10.2
cb	9.5
1/4	9.2
M	8.5
1/4	8.2
cb	7.9
E	7.7

25

26610

3+50

E	5.5
cb	5.9
1/4	6.2
M	6.7
1/4	7.0
cb	7.4
W	8.2

3+75

W	7.2
cb	6.6
1/4	6.0
M	5.6
1/4	4.9
cb	4.7
E	4.6

T.P	5.02	26761	3.57	26259
-----	------	-------	------	-------

26761

4+0

E	5.3
cb	5.7
1/4	6.1
M	6.6
1/4	7.0
cb	7.4
W	8.1

4+25

W	7.5
cb	7.1
1/4	6.5
M	6.0
1/4	5.6
cb	5.2
E	4.8

26

26761

4+50

E	4.7
orb	5.1
14	5.5
M	6.0
14	6.5
orb	7.0
W	7.5

21+623 on W

80' wide 5' 1/2" ps

4+80.3 on E = N Line Myrtle on West

W	8.3
orb	7.7
14	7.2
M	6.6
14	5.9
orb	5.8
E	5.5

26761

North Oupb

27

E	6.3
orb	6.9
14	7.4
M	7.8
14	8.4
orb	8.7
W	9.6

North 14

W	10.2
orb	9.3
14	8.8
M	8.2
14	7.9
orb	6.5
E	6.8

267.61

Center

E				9.3
cb				9.7
1/4				10.5
M				11.3
1/4				11.9
cb				12.8
W				13.8
T.P.	1.13	256.99	11.75	255.86

South 1/4

W				6.9
cb				5.5
1/4				4.3
M				3.3
1/4				2.2
cb				1.2
E				0.6

South Curb

28

E				1.5
cb				2.4
1/4				3.5
M				4.5
1/4				5.7
cb				7.1
W				8.6
				= 224.423 on West
				57.603 = S Line Myrtle on E
W				14.1
cb				12.2
1/4				10.2
M				8.3
1/4				7.3
cb				6.2
E				4.8
T.P.	0.78	245.60	12.17	244.82

24560

0+25 S

E	6.3
cb	8.5
1/4	9.8
M	11.2
1/4	12.1
cb	13.4
W	16.2
22+82 on the West 0+397 = N Line of South Myrtle	
W	22.0
cb	19.6
1/4	19.1
M	18.7
1/4	17.6
cb	16.0
E	14.3

S curb S Myrtle

29

E	19.0
cb	19.5
1/4	17.9
M	18.4
1/4	19.0
cb	19.2
W	19.0
S 1/4	
W	15.4
cb	15.9
1/4	15.6
M	14.9
1/4	15.0
cb	15.3
E	15.2

Center South Myrtle

E	12.7	245.60
cb	13.6	
1/4	13.7	
M	12.7	
1/4	12.0	
cb	11.5	
W	11.1	
	S 1/4	
W	6.2	
cb	7.0	
1/4	7.7	
M	8.1	
1/4	8.7	
cb	8.9	
E	9.2	

245.60

S. Ourb

30

E	5.0
cb	4.3
1/4	2.9
M	1.9
1/4	1.4
cb	1.4
W	1.0

0997 = S Line South Myrtle St E

23 + 42 " W
T.P. 13.00 257.59 1.01 244.59

W	7.5
cb	8.6
1/4	9.6
M	9.9
1/4	10.8
cb	12.0
E	13.3

T.P. 10.91 267.04 0.96 256.63

26704

0+25 S

E	9.8
cb	9.5
HA	9.5
M	9.4
HA	9.5
cb	9.6
W	9.5

0+50

W	6.8
cb	6.5
HA	6.2
M	6.0
HA	5.8
cb	5.6
E	5.8

26704

0+75

31

E	3.7
cb	4.1
HA	4.3
M	4.9
HA	5.3
cb	5.8
W	6.3

T.F. 614 27066 2.52 26752

1+0

W	9.8
cb	9.1
HA	8.5
M	8.9
HA	7.2
cb	6.7
E	6.4

27066

1725

E	6.2
orb	6.7
114	6.9
M	7.6
114	8.3
orb	9.2
W	9.9

592 27094

26452

1750

W	9.9
orb	9.1
114	8.2
M	7.3
114	6.7
orb	6.1
E	5.7

1775

32

E	5.7
orb	6.3
114	6.8
M	7.4
114	8.1
orb	9.1
W	9.8

12' Walks 5' 1/2"

1798⁵ on E = N Line Upas

W	9.9
orb	8.9
114	8.0
M	7.1
114	6.6
orb	6.2
E	5.6

.1

North Curb

E	5.6
erb	6.1
1/4	6.4
M	7.0
1/4	8.2
erb	8.9
W	10.0

N. 1/4

W	10.1
erb	8.9
1/4	8.1
M	6.8
1/4	6.4
erb	6.1
E	5.6

Center

33

E	5.8
erb	6.2
1/4	6.9
M	7.4
1/4	8.6
erb	9.8
W	10.7

S 1/4

W	11.3
erb	10.0
1/4	8.8
M	7.6
1/4	7.1
erb	6.6
E	6.0

S curb

E 6.1

urb 6.6

1/4 7.2

M 7.8

1/4 9.1

urb 9.9

W 11.4

Park Line = $26 + 16.7$ on E
 $26 + 16.9$ on W

W 11.3

urb 10.0

1/4 9.3

M 8.2

1/4 7.4

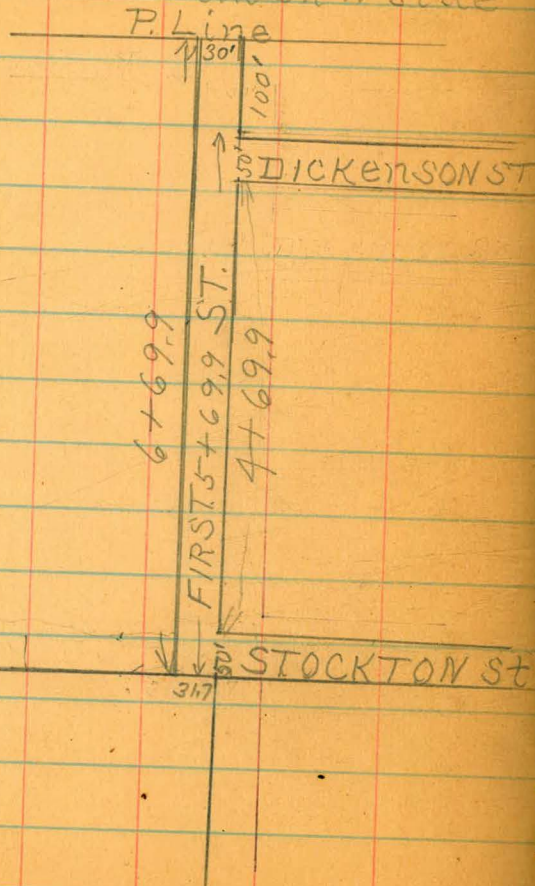
urb 6.8

E 6.22

Cross section First St. South Line Stockton

North to P. Line 8' Walk on E 10' 44"

No Walk on W side



B.M. S.W. Co. 3rd + Stockton RR Spike

35

2.70 289.10 286.40

T.P. 10.54 298.46 118 28792

0.0 = South Line Stockton on E 50' wide 5' 4" 9"

E	6.3	292.2
+1	5.4	293.1
cb	5.2	293.3
14	4.8	292.5
W	4.0	294.5

South Curb

W	4.6	293.9
14	5.1	292.4
cb	5.3	293.2
E	6.6	291.9

S 14

E	6.3	292.2
cb	5.3	293.2
14	5.2	293.3
W	4.7	293.8

298.5
Center Stockton

W	3.9	294.6
NA	5.0	293.5
cb	5.4	293.3
E	6.5	292.0

N NA

E	7.1	291.4
cb	5.4	293.1
NA	4.2	293.7
W	2.8	295.7

N. curb

W	2.9	295.6
NA	4.0	294.5
cb	5.2	293.9
E	6.5	292.0

North Line Stockton on E = 0+50 m W 36

E	6.2	292.3
+1	5.1	293.4
cb	5.1	293.4
NA	4.2	293.9
W	3.1	295.4

0+75

+25

W	4.6	293.9
NA	4.3	294.2
cb	3.7	294.5
E	3.9	294.8

1+0 +50

E	5.1	293.4
cb	4.9	293.6
NA	4.8	293.7
W	4.6	293.7

1+25 ^{x16}
 W 48 293.7
 1/4 49 293.6
 orb 49 293.6
 E 52 293.3

1+50 ^{x100}
 E 53 293.2
 orb 51 293.4
 1/4 51 293.4
 W 50 293.5

1+75 ^{x100}
 W 49 293.6
 1/4 45 294.0
 orb 49 293.6
 E 52 293.3

298.46
 2+0 ¹⁵⁰ 37

E 6.1 292.4
 orb 5.8 292.7
 1/4 5.7 292.7
 W 5.8 292.7

2+25 ¹⁷⁵
 W 7.2 291.3
 1/4 8.0 290.5
 orb 7.9 290.5
 E 8.5 290.6
 E 8.5 290.0

2+50 ²⁰⁰
 E 10.1 288.4
 orb 9.8 288.7
 1/4 9.2 289.0
 W 8.6 289.3
 W 8.6 289.9

298.46

2+75

272

W 12.4 286.1

1/4 12.3 ~~286.2~~

orb 12.3 286.2

E 12.2 286.3

T.P 1.25 28731 12.40 28606

3+0

250

E 7.0 280.3

orb 7.9 279.4

1/4 8.6 ~~279.4~~W 7.9 279.4
T.P 2.71 27736 12.66 274.65

3+25

276

W 5.4 272.0

1/4 7.9 ~~269.5~~

orb 7.7 269.6

E 7.5 269.9

3+40 = Bottom

290

38

E 14.3 263.1

orb 15.0 262.4

1/4 11.9 ~~263.9~~
265.5

W 8.9 268.5

3+50

250

W 5.2 272.2

1/4 7.4 ~~270.0~~orb 11.1 ~~268.2~~
268.3

E 14.5 263.0

T.P 10.45 286.25 1.56 27580

3+75

276

E 17.5 268.8

orb 13.4 272.9

1/4 10.0 ~~274.5~~
275.2

W 5.3 281.0

286.3

4+0

350

W			0.3	286.0
+4			0.4	285.9
+6			4.0	282.3
1/4			8.3	278.0
cb			10.2	277.0
				276.1
E			9.9	276.4
TP	8.53	294.37	0.41	285.84

4+25

375

E			8.6	285.8
cb			8.3	286.1
1/4			8.3	286.1
W			8.1	286.3

4+50

400

W			7.6	286.8
1/4			7.5	286.7
cb			7.2	287.0
				287.2
E			7.0	287.4

4+75

425

39

E			6.0	288.4
cb			6.5	287.9
1/4			7.2	281.5
				284.2
W			7.3	287.1

5+0

450

W			6.5	287.9
1/4			6.7	287.7
cb			6.7	287.7
				287.7
E			6.5	287.9

ON THE East

50' Wide 400.9

5+199 = South Line Dickenson St 5' 1/4"

E			6.1	288.3
cb			5.9	289.5
1/4			5.5	288.7
				288.9
M			6.1	288.3

294.4

South Curb

W	6.0	288.4
1/4	5.4	289.0
crb	5.5	288.9
E	5.8	288.6

S 1/4

E	5.5	288.9
crb	5.5	288.9
1/4	5.7	288.7
W	5.6	288.8

Center

W	5.4	289.0
1/4	5.3	289.1
crb	5.4	289.0
E	5.2	289.2

N 1/4

40

E	5.0	289.4
crb	4.6	289.8
1/4	4.5	289.9
W	4.8	289.6

N. Curb

W	4.4	290.0
1/4	4.1	290.3
crb	4.4	290.1
E	4.8	289.6

5+6990m E = N. Line Dickenson

E	4.2	290.2
crb	3.9	290.5
1/4	3.6	290.7
W	3.5	290.9

T.P. 663 29813 287 29150

298.1

0+25 N

W	6.4	291.7
1/4	6.5	291.6
cb	6.2	291.9
E	6.3	291.8

0+50

E	5.4	292.7
cb	5.4	292.7
1/4	5.3	292.8
W	5.4	292.7

0+75

W	4.6	293.5
1/4	4.7	293.4
cb	4.8	293.3
E	4.7	293.4

1+0 = F Line

41

E	4.6	293.5
cb	4.5	293.6
1/4	4.5	293.6
W	4.6	293.5

Shaw 25
Evans 12
Tucker 10

X Sec. Ingalls St. Lewis to Broadway.

20' Walker 5' 1/4"

B.M. R.R. Spk. S.E. Cor. Lewis + Ingalls 275.87

5.12 280.99 275.87

N. Line Lewis

W	3.8	277.2
cb	4.4	
1/4	4.4	
ctr	4.6	275.4
1/4	4.7	
cb	4.9	
E	4.6	275.4

280.99

42

0+25 North

E	3.2	277.8
cb	3.6	
1/4	3.6	
M	3.9	277.1
1/4	3.7	
cb	3.8	
W	4.2	276.8

0+50

W	4.9	276.1
cb	4.2	
1/8	4.0	
M	4.0	277.0
1/4	3.7	
cb	3.5	
E	3.2	277.8

280.99

0775

E	3.6	277.4
urb	3.9	
1/4	4.2	
M	4.3	276.7
1/4	4.5	
urb	4.7	
W	5.2	275.8

170

W	5.6	275.4
urb	5.3	
1/4	5.0	
M	4.8	276.2
1/4	4.8	
urb	4.3	
E	3.8	277.2

280.99

1725

43

E	4.1	276.9
urb	4.7	
1/4	5.0	
M	5.1	275.9
1/4	5.4	
urb	5.6	
W	5.8	275.2

1750

W	6.1	274.9
urb	5.7	
1/4	5.8	
M	5.4	275.6
1/4	5.2	
urb	4.7	
E	4.5	276.5

280.99

1+75

E	5.1	275.9
erb	5.9	
1/4	5.7	
M	5.8	275.2
1/4	6.0	
erb	6.1	
W	6.2	274.8

2+0

W	6.3	274.7
erb	6.2	
1/4	6.0	
M	6.0	275.0
1/4	6.2	
erb	6.0	
E	5.9	275.1

280.99

2+25

44

E	6.6	274.4
erb	6.6	
1/4	7.0	
M	6.9	274.1
1/4	6.8	
erb	6.6	
W	6.6	274.4

2+50

W	7.6	273.4
erb	7.8	
1/4	8.1	
M	7.9	273.1
1/4	7.9	
erb	7.3	
E	7.4	273.6

28099

2775

E	8.6	272.4
cb	8.5	
14	9.1	
M	9.0	272.0
14	9.4	
cb	9.5	
W	9.7	271.3

340 = S Line Broadway

W	10.7	270.3
cb	10.7	
14	10.5	
M	10.2	270.8
14	9.7	
cb	9.5	
E	9.2	271.8

45

X Sec. Ingalls, S. Line Ghetto to N. Line Douglas

210' Walks 5' 1/4^s
 B.M. R.R. Sta. S. & E. on Lewis + Ingalls
 B.M. 2.08 277.95 275.87

South Line Ghetto St

W	3.8	274.2
wb	4.4	
1/4	4.3	
M	4.6	273.4
1/4	5.0	
wb	5.2	
E	5.0	272.9

0+25 South

E	5.1	272.9
wb	5.6	
1/4	5.1	
M	4.8	273.2
1/4	4.7	
wb	4.7	
W	4.5	273.5

Shaw
 Evans
 Tichenor 29/12/10

0+50

46

W	5.1	272.9
wb	5.1	
1/4	5.1	
M	5.2	272.8
1/4	5.1	
wb	5.2	
E	5.3	272.7

0+75

E	5.4	272.6
wb	5.5	
1/4	5.5	
M	5.4	272.6
1/4	5.4	
wb	5.5	
W	5.7	272.3

277.95

1+0

W	6.2	271.5
cb	5.9	
1/4	5.8	
M	5.8	272.2
1/4	5.6	
cb	5.6	
E	5.4	272.6

1+25

E	6.5	271.5
cb	6.4	
1/4	6.3	
M	6.3	271.7
1/4	6.5	
cb	6.5	
W	7.0	271.0

277.95

1+50

W	7.8	270.2
cb	7.6	
1/4	7.3	
M	7.3	270.7
1/4	7.3	
cb	7.5	
E	7.8	270.2

1+75

E	9.4	268.6
cb	9.0	
1/4	8.8	
M	8.7	269.3
1/4	8.8	
cb	9.0	
W	9.3	268.7

47

27795

2+0

W	10.7	267.3
cb	10.7	
1/4	10.6	
M	10.5	267.5
1/4	10.5	
cb	10.6	
E	10.4	267.6

2+25

E	11.7	266.3
cb	12.1	
1/4	12.2	
M	12.4	265.6
1/4	12.2	
cb	12.2	
W	11.9	266.1

27795

2+50

W	13.0	265.0
cb	13.5	
1/4	13.7	
M	13.5	264.5
1/4	13.6	
cb	13.6	
E	13.5	264.5

T.P 3.41 269.00 12.36 265.59

2+75

E	6.4	262.6
cb	6.4	
1/4	6.3	
M	6.0	263.0
1/4	5.7	
cb	5.2	
W	4.0	265.0

48

269.00

50' Wide 5' 1/4"

310 N Line Washington St

W	3.4	265.6
cb	4.3	
1/4	4.5	
M	5.7	263.3
1/4	7.0	
cb	7.5	
E	8.1	260.9

North Curb

E	9.1	259.9
cb	7.5	
1/4	7.1	
M	5.7	263.3
1/4	4.6	
cb	4.3	
W	3.3	265.7

269.00

North 1/4

49

W	3.3	265.7
cb	4.4	
1/4	4.7	
M	5.7	263.3
1/4	7.2	
cb	7.6	
E	9.2	259.8

Center

E	9.5	259.5
cb	7.9	
1/4	7.3	
M	5.8	263.2
1/4	4.5	
cb	4.3	
W	2.7	266.3

269.00

South 1/4

W	2.2	266.8
cb	4.0	
1/4	4.4	
M	5.9	263.1
1/4	7.7	
cb	8.2	
E	9.8	259.2

South Curb

E	9.9	259.1
cb	8.1	
1/4	7.6	
M	5.8	263.2
1/4	4.2	
cb	3.7	
W	1.8	267.2

269.00

South Line Washington

50

W	1.0	268.0
cb	3.3	
1/4	3.9	
M	5.8	263.2
1/4	7.6	
cb	8.1	
E	10.4	258.6

0+25 South

E	10.3	258.7
cb	8.1	
1/4	7.6	
M	6.0	263.0
1/4	4.0	
cb	3.5	
+12	1.7	
+15	6.7	
W	0.7	268.3

269.00

0+50

W	0.8	268.2
+4	2.6	
urb	4.5	
1/4	5.0	
M	6.6	262.4
1/4	8.0	
urb	8.5	
E	10.8	258.2

0+75

E	11.7	257.3
urb	9.3	
1/4	8.8	
M	7.8	261.2
1/4	6.4	
urb	6.0	
+17	4.2	
W	2.6	266.4

269.00

1+0

51

W	5.4	263.6
urb	7.1	
1/4	7.5	
M	9.1	259.9
1/4	10.3	
urb	11.1	
E	13.5	255.5
T.P	6.76	263.83
	11.93	257.07

1+25

E	12.4	251.4
urb	7.8	
1/4	6.9	
M	5.2	258.6
1/4	3.6	
urb	2.9	
W	1.5	262.3

263.83

1+50

W		
erb	2.4	261.4
1/4	4.3	
	4.5	
M		
1/4	5.8	258.0
	8.7	
erb	9.3	
E		
	15.9	247.9

1+75

E		
erb	15.4	248.4
	8.9	
1/4	8.2	
M		
1/4	6.6	257.2
	5.3	
erb	4.8	
W		
	3.2	260.6

263.83

2+0

W		
erb	4.2	259.6
1/4	5.2	
	5.6	
M		
1/4	6.2	257.6
	7.5	
erb	7.9	
E		
	13.2	250.6

2+25

E		
erb	14.3	249.5
	9.0	
1/4	8.9	
M		
1/4	7.3	256.5
	6.1	
erb	6.1	
W		
	5.0	258.8

52

263.83

2150

W		6.5	257.3
cb		7.2	
1/4		7.6	
M		8.7	255.1
1/4		10.3	
cb		12.2	
E		17.1	246.7
TP	5.70	257.10	1243 251.40

2175

E		15.5	241.6
cb		10.3	
1/4		9.1	
M		6.0	251.1
1/4		3.4	
cb		2.3	
W		1.3	255.8

257.10

370 North Line Douglass St

58

W		8.5	249.6
cb		8.5	
1/4		9.1	
M		11.8	245.3
1/4		15.3	
cb		16.1	
E		20.3	236.8

3
12
11

Bought
Palm
Figs

See of Maple St (80)
India St to State St

100.00

Maple St
54

464 100.00

95.26

B2n DP44
1st 2nd St &
Columbia

50 N 6

Columbia

W side of Columbia St

N

(+0.2)
66 100.2
93.4

N
+2

00 100.0

13

33

h

(0.6)
69

4

39

7

(2.5)
70

6

58 94.2

6

(4.0)
72 96.0
92.8

4

60

7

+2

57 94.3

h

65

h

63 93.7

S

71 92.9

S

78 92.2

75' W of Columbia

25' W of Columbia

S

71 92.9

S

73 92.7

h

64

h

72

74

75

7

55

4

72

6

45 95.5

6

76 92.4

7

35

4
+7
+11

77

55

52

h

18

h

58

55

N

05 99.5

N
+5

14 98.6

100 W

100 w of Columbia

n		34	96.6
	+1'	35	
h	+9'	9.5	
		7.4	
y		100	
b		9.3	90.7
y		8.9	
h		8.8	
	+10'	9.0	
	+11'	7.7	
s		7.9	92.1

125' w of Columbia

s		8.2	91.8
	+3'	9.0	
	+4'	11.2	
h		10.7	
	+4'	10.4	
	+7'	15.0	
y		15.2	
b		15.4	84.6
y		13.3	
h		12.8	
	+6'	11.5	
n		5.0	95.0

100 W

150 w of Columbia

n		6.9	93.1
	+1'	7.1	
h	+8'	13.3	
		15.0	
y		15.6	
b		14.8	83.2
y		18.0	
h		18.0	
	+5'	17.4	
	+12'	10.9	
s		10.9	89.1

Old tree is OK for here

Maple v

55

10000
E side of Columbia

2	(15) (6.7)	85.0 93.3
4	(32) (7.2)	
7	(47) (2.3)	
6	7.2	92.8
9	7.7	
4	(75) (8.0)	
5	7.8	92.2

25' E of Columbia

5	9.1	90.9
4	8.7	
7	8.5	
6	8.4	91.6
9	6.5	
4	4.6	
2	1.8	98.2

10000
Maple
56

50 E of Columbia

2	5.0	95
4	7.8	
4	10.0	
6	9.6	90.4
7	9.6	
4	9.1	
5	9.8	90.2

75' E of Columbia

5	12.6	89.4
4	9.8	
7	9.7	
6	9.7	90.3
7	11.7	
4	12.1	
2	9.8	90.2

TP 180 8880 1360 87.00

8880

100 E f Columbia

n		25	86.3
ll		37	
7		35	
6	+7'	1.6	
		1.6	87.2
7		1.0	
ll		5.2	
5		7.8	81.0

116 E f Columbia

5		94	79.4
ll		68	
7		5.2	
		5.2	
6	+9'	7.3	81.5
7		9.3	
ll		8.2	
		6.2	
n	+1.3'	5.0	83.8

8880

Maple

57

125 E f Columbia s.

n		6.3	82.5
		8.0	
ll		9.3	
7		12.2	
6		12.2	76.6
7		8.6	
ll		10.6	
5		14.4	74.4

TP 100 77.27 12.53 76.27

150 E f Columbia

5		17.5	59.8
ll		15.3	
7		16.0	
6		10.9	66.4
7		8.3	
ll		3.5	
n		1.1	76.2

7727

160 E of Columbia

2 34 76.9

ll 79

9 112

175 E of Columbia

21 73 70.0

ll 104

STP 092 65.33 1286 6451

160 E of Columbia

S 115 53.8

+4' 94

ll 92

7 86

6 62 59.1

+6' 09

6533

Maple

58

175 E of Columbia

S 122 53.1

ll 118

+5' 116

+10' 90

6 87 56.6

4 27

300 E = W of State St

n 41 61.2

+6' 72

ll 75

+7' 76

7 107

6 115 53.8

4 117

ll 118

S 120 53.3

4. Polong X Sec of D. ex (50) Wd 29 to Wd 31
 25' Central
 11:5' City/State

	215	197.45	195.30	Bm 56.5 64 30
	Wd in 1 30 ft st (80) (graded)			
S		197.5	23	195.2
tl			25	195.0
y			30	194.5
b			39	193.6
y			47	192.8
tl			54	192.1
n			54	192.1
	Wd in 1 18' W of 30 ft st in n 2 Wd on S			
n			168	180.7
tl			131	184.4
y			108	186.7
b			86	188.9
y			62	191.3
tl			40	193.5
S			23	195.2

197.45

D. st

59

	25'	W of 30 ft st		
S	197.5	23	195.2	
tl		40	193.5	
y		64	191.1	
b		94	188.1	
y		125	184.9	
tl		155	182.5	
n				
	50 W of 30 ft st			
S		28	194.7	
tl		45	192.9	
y		74	190.1	
b		113	186.2	
y		148	182.7	
tl				
n				

19745

	75	WJ	30 ft	W
S	197.5		48	192.7
bl			77	189.8
4			109	186.6
6			140	183.5
	100	WJ	30 ft	W
S			86	188.9
bl			113	186.2
4			143	183.2
	125	WJ	30	194.5
S			123	185.2
TP	233	18691	1287	18456
	75	WJ	30 ft	W
nd			65	180.4
	50	WJ	30 ft	W
nd			95	177.4
bl			66	180.3

18691

D.A.T.

60

	75	WJ	30 ft	W
91	186.9		128	174.1
bl			90	177.9
4			67	180.2
	100	WJ	30 ft	W
6			73	179.6
4			104	176.5
bl			136	173.3
nd			-	
	125	WJ	30 ft	W
566			41	182.8
4			80	178.9
6			109	176.0
4			149	172.0
	150	WJ	30 ft	W
S			54	181.5
bl			82	178.7
4			120	174.9
6			160	170.9

186.91

	175	w f	30 ft	177.3
S				177.3
bl			130	173.9
y			171	169.8
	200	w f	30 ft	
S				171.5
TP	433	<u>178.49</u>	<u>12.75</u>	<u>174.16</u>
	100	w f	30	
W2		178.5	10.4	168.1
	125	w f	30 ft	
W2			130	165.5
bl			98	168.9
	150	w f	30 ft	
W2			17.4	161.1
bl			135	165.0
y			10.9	167.6

178.49

8.15

61

	175	w f	30 ft	
center		178.5	12.4	166.1
W/H			14.8	163.7
	200	w f	30 ft	
S			7.0	171.5
bl			10.5	168.3
y			13.2	165.3
b			16.8	161.7
	225	w f	30 ft	
S			12.3	165.2
TP	215	<u>167.76</u>	<u>12.88</u>	<u>165.61</u>
	175	w f	30 ft	
W		167.8	11.0	156.8
bl			7.9	159.9

167.76

200 w f 30 ft w-

n 167.8 144 153.4

hh 117 156.1

n 4 88 159.0

225' w f 30 ft w-

Sld 56 162.2

4 80 159.9

b 10.0 157.8

4 128 155.0

hh 158 152.0

250' w f 30 ft w-

SA 91 158.7

hh 104 157.4

4 120 155.8

b 139 153.9

TP 128 156.54 7300 154.72

156.54

D w

62

225 w f 30 ft w-

hd 156.5 68 149.7

250' w f 30 ft w-

hd 86 147.9

hh 73 149.2

4 54 151.1

275' w f 30 ft w-

5 25 154.0

hh 28 153.7

4 43 152.2

b 65 150.0

4 87 147.8

hh 102 146.3

n 101 146.4

156.54

300' w of 300 ft at

n	156.5	106	145.9
h		11.7	144.8
		11.7	144.8
7		11.2	145.3
6		9.7	146.8
4		7.7	148.8
h		6.4	150.1
S		5.9	150.6

325' w of 300 ft at

S		10.4	146.1
h		10.2	146.3
7		11.3	145.2
6		12.8	143.7
4		12.6	143.9
h		12.8	143.7
n		13.1	143.4

156.54

D 11

63

350' w of 300 ft at

n	156.5	13.9	142.6
h		13.8	142.7
4		19.9	136.6
6		13.7	142.8
4		14.3	142.2
h		14.7	141.8
S		15.2	141.3

375' w of 300 ft at

S		15.5	141.0
h		15.4	141.1
4		15.3	141.2
6		15.0	141.5
7		14.3	142.2
h		13.7	142.8
n		12.6	142.9

15654

400' W of south st

n	156.5	.94	147.1
bl		83	148.2
y		80	148.5
t		87	147.8
7		87	147.8
bl		74	147.1
S		100	146.5

425' W of south st

S		23	154.2
bl		07	155.8
y		00	156.5
TP	1243	<u>16897</u>	00 156.54
t		118	157.2
y		120	157.0
bl		123	156.7
n		124	156.6

16897

D st

64

450' W of south st

n	169.0	39	165.1
bl		32	165.8
y		27	166.3
t		24	166.6
4		25	166.5
bl		29	166.6
S		23	166.7

TP 1245 18170 012 168.85

475' W of south st

S	181.7	60	175.7
bl		60	175.7
4		63	175.4
t		70	174.7
y		78	173.9
bl		80	173.7
n		83	173.4

TP 1185 17306 079 181.1

19306

	500	wf	soil	st
2		193.1	119	181.2
4			118	181.3
4			114	181.7
4			112	181.9
4			109	182.2
4			110	182.1
5			111	182.0

525

	525	wf	soil	st
5			94	183.7
4			89	184.2
7			79	185.2
4			74	185.7
7			72	185.9
4			71	186.0
2			64	186.3

19306

D 44

65

	550	wf	soil	st
2		193.1	48	188.3
4			46	188.5
4			52	187.9
4			58	187.3
4			70	186.1
4			80	185.1
5			92	183.9

575

	575	wf	soil	st
5			92	183.9
4			77	185.4
7			67	186.4
4			51	188.0
7			44	188.7
4			40	189.1
2			36	189.5

19306

600' W = E of 292 st (60)

n	193.1	33	189.8
th		35	189.6
y		40	189.1
b		46	188.5
y		58	187.3
th		71	186.0
S		86	184.5

Σ 66 of 292 st

S		83	184.8
th		70	186.1
y		57	187.4
b		45	188.6
y		37	189.4
th		32	189.9
n		30	190.1

19306

D st

66

Σ 1/4 of 292 st

n	193.1	30	190.1
th		31	190.0
y		34	189.7
b		43	188.8
y		52	187.5
th		71	186.0
S		81	185.0

Σ center of 292 st

S		80	185.1
th		69	186.2
y		55	187.6
b		45	188.6
y		35	189.6
th		30	190.1
n		28	190.3

19306

	W	1/4 of	29th	at
n		193.1	27	190.4
ll			35	189.9
7			36	189.5
6			44	188.7
7			54	187.7
ll			69	186.2
S			80	185.1

W 66 of 29th at

S			80	185.1
ll			67	186.4
7			53	187.8
6			42	188.9
7			36	189.5
ll			31	190.0
n			27	190.4

19306

D at

67

W line of 29th at

n		193.1	25	190.6
ll			31	190.0
4			36	189.5
6			43	188.5
7			53	187.8
ll			69	186.2
S			84	184.7

4/11/26
 26/11/26
 X sec 8 D st (80) E 2 30th rd 31
 Bm SE
 -6+30

	720	20320	195.30	Bm SE -6+30
	E line of	30th st	(30th st Grades)	
2	203.2	89	194.3	
bl		93	193.9	
4		95	193.7	
6		87	194.5	
4		95	193.7	
bl		93	193.9	
5		80	195.2	
	6 E of	30th st		
5		78	195.4	
bl		95	193.7	
4		100	193.2	
6		107	192.5	
4		117	191.5	
bl		122	191.0	
2		123	190.9	

20320

D st

68

	25	E of	30th st	
	203.2	115	191.7	
		104	192.8	
		104	192.8	
		86	194.6	
		89	194.3	
		86	194.6	
		74	195.6	
	50	E of	30th st	
		67	196.5	
		76	195.6	
		79	195.3	
		75	193.7	
		74	195.8	
		76	195.6	
		75	195.7	

	75'	E of	30th st	
n	203.2		53	197.9
h			52	197.6
y			59	197.3
t			58	197.4
y			59	197.3
h			59	197.3
S			57	197.5

	100'	E of	30th st	
S			52	198.0
h			50	198.2
y			47	198.5
t			47	198.5
y			46	198.6
h			44	198.8
n			41	199.1

	125'	E of	30th st	
n	203.2		33	199.9
h			36	199.6
y			38	199.4
t			41	199.1
y			43	198.9
h			47	198.5
S			47	198.5

	150'	E of	30th st	
S			44	198.8
h			40	199.2
y			38	199.4
t			37	199.5
y			34	199.8
h			31	200.1
n			29	200.3

20320

	175'	Eg	30th st
h	203.2	30	200.2
h		30	200.2
y		31	200.1
h		30	200.2
y		33	199.9
h		38	199.4
S		40	199.2

	200'	Eg	30th st
S		37	199.5
h		35	199.7
y		30	200.2
h		32	200.0
y		31	200.1
h		33	199.9
h		36	199.6

20320

D st

70

	225'	Eg	30th st
h	203.2	52	198.0
h		38	199.4
y		33	199.9
h		32	200.0
y		31	200.1
h		34	199.8
S		37	199.5

	250'	Eg	30th st
S		35	199.7
h		33	199.9
y		32	200.0
h		33	199.9
y		37	199.5
h		57	199.1
h		70	196.2

270	20284	3.06	200.14
-----	-------	------	--------

20284

	275'	E of	300 ft W	
S		202.8	31	199.7
bl			26	200.2
Y			28	200.0
L			33	199.5
Y			46	198.2
bl			68	196.0
h			87	193.9
	300'	E of	300 ft W	
h			17	191.1
bl			87	193.9
Y			65	196.3
L			42	198.6
Y			32	199.6
bl			32	199.6
S			35	199.3

20284

D 11

71

	325'	E of	300 ft W	
S		202.8	40	198.8
bl			39	198.9
Y			41	198.7
L			62	196.6
Y			95	193.3
bl			127	190.1
h			—	
	350'	E of	300 ft W	
S			68	196.0
bl			75	195.3
Y			85	194.3
L			117	191.1
Y			150	187.8
	375'	E of	300 ft W	
S			111	191.7
bl			121	190.7
Y			144	8.4

	20254			
	0.47	<u>190.34</u>	<u>1297</u>	<u>1896.7</u>
TP	325	E 8	30 d 11	187.3
n			30	187.3
	350	E 6	30 d 11	
n		190.3	73	183.0
ll			48	185.5
	375	E 6	30 d 11	
n			122	178.1
ll			94	180.9
7			70	183.3
6			42	186.1
	400	E 6	30 d 11	
5			20	188.3
ll			32	187.1
4			47	185.4
6			79	182.4
4			106	179.7
ll			136	176.7

	19034			
	425	E 8	30 d 11	
S		190.3	37	186.6
ll			52	184.7
4			81	182.2
6			108	179.5
4			142	176.1
	450	E 8	30 d 11	
5			68	183.5
ll			80	182.3
4			98	180.5
6			138	176.5
TP	383	<u>181.47</u>	<u>1270</u>	<u>1776.4</u>
	400	E 7	30 d 11	
n		181.5	92	172.3
	425	E 8	30 d 11	
n			138	167.7
ll			90	172.5

D 11
72

18147

	450	E of	300 ft	W	
N 1/4	181.5		100	171.5	
N 1/2			146	166.9	
N 2			—		

	475	E of	300 ft	W	
S	181.5		5.1	176.4	
ll			5.8	175.7	
7			8.0	173.5	
6			11.0	170.5	
4			15.8	165.7	

	500	E of	30	ft	W
S			10.1	171.4	
ll			14.2	167.3	
4			16.0	165.5	
6	TP	016	168.66	12.97	168.50

	450	E of	300 ft	W	
N			6.2	162.5	

16866

D st

75

	475	E of	300 ft	W	
N	168.7		12.8	155.9	
ll			8.3	160.4	
	500	E of	30	ft	W

N			—		
ll			14.0	154.7	
7			9.8	158.9	
6			6.3	162.4	

	525	E of	30	ft	W
S			6.3	162.4	
ll			8.4	160.3	
4			11.2	157.1	
6			13.3	155.4	

TP	060	156.48	12.78	155.88	
----	-----	--------	-------	--------	--

	500	E of	30	ft	W
N			5.2	151.3	

15648

	525	E f	30 d	st
R		156.5	105	146.0
ll			73	149.2
7			50	151.5
	550	E f	30 d	st
S			64	150.1
ll			80	148.5
7			8.8	147.7
6			97	146.8
7			119	144.6
ll			130	143.5
+6			132	143.3
TP	575	14420	1300	143.48
R			3.7	140.5

14420

D st

74

	575	E f	30 d	st
R		144.2	103	133.9
ll			76	136.6
76			52	138.9
7			50	139.2
6			56	138.8
4			55	138.7
ll			58	138.4
S			50	139.2
	600	E f w	31 d	st
S			11.8	132.4
ll			11.6	132.6
7			11.7	132.8
6			11.6	132.6
7			11.8	132.4
ll			10.5	133.7
R			7.44	136.2

nw H

31 d

5 Blount Levels from Slopes on D at
 10 Dismal But 27 + 28 at 30' S of S line
 11 Zhytolovch

144175 from Bank 254 P 49

30' S of S line of D at

W of 28 at st			5.9	138.9
18' W of 28 at st			10.3	134.4
25' " "			8.8	135.9
50' " "			6.0	138.7
75' " "			3.5	141.2
TP	1240	<u>156.91</u>	0.27	<u>144.57</u>
100' " "			11.3	145.6
125' " "			8.3	148.6
150' " "			5.6	151.3
TP	1272	<u>167.95</u>	16.5	<u>155.26</u>
175' " "			12.6	155.4
200' " "			10.0	158.0
225' " "			5.0	163.0

5
12
17
Blump
Baker
Zeyher
Levels for Slopes on D St
But 294 30th St N side

14675 from Book 354 P 50

375' N 130th St	35' out	4.8	143.9
350' " " "	35' "	5.1	143.6
340' " " "	35' "	5.1	143.6
325' " " "	29' "	0.7	148.0

TP	1300	161.46	0.27	148.46
----	------	--------	------	--------

300' N of 30	23' out	9.1	152.4
278' " " "	25' out	8.5	153.0
250' " " "	26' out	9.0	152.5
228' " " "	27.5' "	8.5	153.0
200' " " "	30' out	9.8	151.7
175' " " "	34.5' out	8.5	153.0
150' " " "	38.5' out	8.7	152.8
125' " " "	36' out	5.0	156.5

TP	1170	172.84	0.32	161.14
----	------	--------	------	--------

100	30' out	10.2	162.6
75	26.5' out	5.3	167.5

TP	1297	183.5	2.66	170.18
----	------	-------	------	--------

183!5-V

76

50' N of 30th	18' out	7.6	175.5
25' " " "	18' out	5.5	177.6
18' " " "	16' out	3.4	179.7

30' N of 30th

5 / plough
13 / Prima
11 / 2nd hand

Levels for Slopes on D St (80)

Bot 30 + 31st St

554 14230 13676

Bm 244
31st D

W line of D St

24' W of 31st	20' out	02	142.1
25' W of 31	33' out	60	136.3
50' W " "	8' "	52	127.1
50' W " "	15' "	27	129.6
50' " " "	30' "	1.6	140.7

TP 1248 15453 025 142.05

75' W of 31st	9' out	124	142.1
75' " " "	22' "	73	147.2
100' " " "	7' "	40	150.5
100' " " "	17' "	60	148.5
100' " " "	22.5' "	40	150.5
125' " " "	22.3' "	180	152.7

TP 1296 16723 026 154.27

150' " " "	19' out	97	157.5
175' W " "	14' "	38	163.0

1294 18003 014 16709

200' W of 31st 8' out 104 169.6

225' " " " 8' out 19 178.1

77

78

79

Levels on North 50' Line Bush St. E. of Goldfinch
Monument N.W. Cor Sutter + Goldfinch Sts

B.M	6.85	263.84	256.99	
E Line Goldfinch				
0			4.4	
+25			5.5	
+50			6.8	
+75			7.9	
1+0			12.5	
T.P	1.88	253.11	12.61	256.23
1+25			7.0	
1+50			8.2	
1+75			8.8	
2+0			10.6	
+25			15.5	
T.P	1.58	242.32	12.37	240.74
+50			9.1	
+75			12.6	
3+0			15.3	
T.P	0.61	230.20	12.73	229.59

3+25			5.2	
+50			9.1	
T.P	1.73	219.17	12.76	217.44
+75			4.3	
4+0			8.2	
+25			9.4	
+50			10.9	
+72			11.7	Gate Fence

57.26 NE near Woolman + 37
 95.78 NW S Siegle + 38
 83.009 NW NW S Woolman + 38
 79.56 NW NW 38 + Woolman

Published by H. S. CROCKER COMPANY, Stationers, Drawing Materials, Mathematical Instruments, etc., San Francisco.

TRAVERSE TABLE FOR TRANSIT BOOK.
 From 1° to 90° for a distance of 100.

Degrees.	DEGREES.		½ DEGREE.		¼ DEGREE.		¼ DEGREE.		Degrees.
	Lat.	Dep.	Lat.	Dep.	Lat.	Dep.	Lat.	Dep.	
0			100.00	0.44	100.00	0.87	99.99	1.31	89
1	99.98	1.75	99.98	2.18	99.97	2.62	99.95	3.05	88
2	99.94	3.49	99.92	3.93	99.91	4.36	99.88	4.80	87
3	99.86	5.23	99.84	5.67	99.81	6.10	99.79	6.54	86
4	99.76	6.98	99.73	7.41	99.69	7.85	99.66	8.28	85
5	99.62	8.72	99.58	9.15	99.54	9.58	99.50	10.02	84
6	99.45	10.45	99.41	10.89	99.36	11.32	99.31	11.75	83
7	99.25	12.19	99.20	12.62	99.14	13.05	99.09	13.49	82
8	99.03	13.92	98.97	14.35	98.90	14.78	98.84	15.21	81
9	98.77	15.64	98.70	16.07	98.63	16.50	98.56	16.93	80
10	98.48	17.36	98.40	17.79	98.33	18.22	98.25	18.65	79
11	98.16	19.08	98.08	19.51	97.99	19.94	97.90	20.37	78
12	97.81	20.79	97.72	21.22	97.63	21.64	97.53	22.07	77
13	97.44	22.50	97.34	22.92	97.24	23.34	97.13	23.77	76
14	97.03	24.19	96.92	24.62	96.81	25.04	96.70	25.46	75
15	96.59	25.88	96.48	26.30	96.36	26.72	96.25	27.14	74
16	96.13	27.56	96.00	27.98	95.88	28.40	95.76	28.82	73
17	95.63	29.24	95.50	29.65	95.37	30.07	95.24	30.49	72
18	95.11	30.90	94.97	31.32	94.83	31.73	94.69	32.14	71
19	94.55	32.56	94.41	32.97	94.26	33.38	94.12	33.79	70
20	93.97	34.20	93.82	34.61	93.67	35.02	93.51	35.43	69
21	93.36	35.84	93.20	36.24	93.04	36.65	92.88	37.06	68
22	92.72	37.46	92.55	37.86	92.39	38.27	92.22	38.67	67
23	92.05	39.07	91.88	39.47	91.71	39.87	91.53	40.27	66
24	91.35	40.67	91.18	41.07	91.00	41.47	90.81	41.87	65
25	90.63	42.26	90.45	42.66	90.26	43.05	90.07	43.44	64
26	89.88	43.84	89.69	44.23	89.49	44.62	89.30	45.01	63
27	89.10	45.40	88.90	45.79	88.70	46.17	88.50	46.56	62
28	88.29	46.95	88.09	47.33	87.88	47.72	87.67	48.10	61
29	87.46	48.48	87.25	48.86	87.04	49.24	86.82	49.62	60
30	86.60	50.00	86.38	50.38	86.16	50.75	85.94	51.13	59
31	85.72	51.50	85.49	51.88	85.26	52.25	85.04	52.62	58
32	84.80	52.99	84.57	53.36	84.34	53.73	84.10	54.10	57
33	83.87	54.46	83.63	54.83	83.39	55.19	83.15	55.56	56
34	82.90	55.92	82.66	56.28	82.41	56.64	82.16	57.00	55
35	81.92	57.36	81.66	57.71	81.41	58.07	81.16	58.42	54
36	80.90	58.78	80.64	59.13	80.39	59.48	80.13	59.83	53
37	79.86	60.18	79.60	60.53	79.34	60.88	79.07	61.22	52
38	78.80	61.57	78.53	61.91	78.26	62.25	77.99	62.59	51
39	77.71	62.93	77.44	63.27	77.16	63.61	76.88	63.94	50
40	76.60	64.28	76.32	64.61	76.04	64.94	75.76	65.28	49
41	75.47	65.61	75.18	65.93	74.90	66.26	74.61	66.59	48
42	74.31	66.91	74.02	67.24	73.73	67.56	73.43	67.88	47
43	73.14	68.20	72.84	68.52	72.54	68.84	72.24	69.15	46
44	71.93	69.47	71.63	69.78	71.33	70.09	71.02	70.40	45
45	70.71	70.71							
Degrees.	Dep.	Lat.	Dep.	Lat.	Dep.	Lat.	Dep.	Lat.	Degrees.
Degrees.	DEGREES.		½ DEGREE.		¼ DEGREE.		¼ DEGREE.		Degrees.