

Middletown Div. Line
Lower Reservoir Level Notes
and
Misc. Street X Sections

F.B.4

2

showing the difference of latitude and departure in running 80 chains at any course from 1 to 60 minutes.

Minutes.	Lks.	Minutes.	Lks.	Minutes.	Lks.
1	2½	21	49	41	95½
2	4½	22	51½	42	98
3	7	23	53½	43	100½
4	9½	24	56	44	102½
5	11½	25	58½	45	105
6	14	26	60½	46	107½
7	16½	27	63	47	109½
8	18½	28	65½	48	112
9	21	29	67½	49	114½
10	23½	30	70	50	116½
11	25½	31	72½	51	119
12	28	32	74½	52	121½
13	30½	33	77	53	123½
14	32½	34	79½	54	126
15	35	35	81½	55	128½
16	37½	36	84	56	130½
17	39½	37	86½	57	133
18	42	38	88½	58	135½
19	44½	39	91	59	137½
20	46½	40	95½	60	140

PUBLISHED BY

EDWARD DENNY & CO.

DRAWING PAPER & MATERIAL, MATHEMATICAL INSTRUMENTS,
STATIONERS AND PRINTERS
SAN FRANCISCO, CAL.

Table for Running on Slopes.

In the following table the first column shows the angle, the second, the links to be added to a chain on the slopes, to make one chain, horizontal measure.

Angle.	Cor. in links.	Angle.	Cor. in links.	Angle.	Cor. in links.	Angle.	Cor. in links.
0		0		0		0	
4	0-24	11	1-88	18	5-14	25	
5	0-38	12	2-24	19	5-76	26	
6	0-55	13	2-63	20	6-42	27	
7	0-76	14	3-06	21	7-11	28	
8	0-98	15	3-53	22	7-85	29	
9	1-24	16	4-02	23	8-24	30	
10	1-55	17	4-56	24	8-56	31	

*Return to City Engineers Office
City Hall, San Diego, Cal.*

MICROFILMED

DEC 1 1984

*Return to City Engineers Office
City Hall, San Diego, Cal.*

Index

- Riv. line bet M.T. & H.A. pp 2 - 7 ✓
 S. St. & Bel Mar R.R. " 9 ✓
 Inlet to Reservoir " 10 - 13 ✓
 Riv. Line bet M.T. & M.T. Add
 and connections with
 M.T. 5th St . 14
 Fourth Standard Line
 South, Tripoints Page 16 ✓
 Cross section of B. St Schoolhouse
 lot Pages 17 - 18 ✓
 Grades Lots E & F Blk 88 H.A.
 for J.P. Baeksto Page 19 ✓
 Elevations in Sewer Tank pp 20 - 38
 Cross section of 3rd rd pp 39 - 42 ✓
 " " " Oliver Ave pp 43 - 44 ✓
 " " 4th St Ash to Bole pp 45 - 46 ✓
 Level grades for E 1/2 of Lots 4 & H
 blk 85 H.A. S.A.R. 5th P. 48
 Cross section of Maple St from
 5th to Park Boulevard P 49

Div line bet H.A. & R.C.T.

592.75 27° 12' Right

N 41° 05' W

302.50 7° 18' Right

o 24° 45' Left

Beginning at Iron 20. B.S. to
at point on preceding course
on S 7' line of Hawthorn St.

□ Monument 21

△ Plg.

□ Monument 20

Line bet H.A. & M.T.

3709.74 Pt on line.

1495.74 N 0' W Pt on line

5738 N 46' Pt on line

2.55' Mutney

469.45 18° 25' Left

488.03 N 46' W In apple St

104.95 N 27' 30' W Laurel St

524.46 13° 09' Left

N 14° 0' W

p19.

p19.

Monument 23 ✓

p19

p19

Monument. 22.

Div line bet HA & MT

6+50.38 Pt on line

Spruce

Plg.

3+19.4

M
70
55

Pt on line.

Plg.

3+03.59

Redwood St.

Plg.

2+15.16

Pt on line

Plg.

14+97.5 9° 44' 15" left

Monument 24 ✓

14+19.06 Quince Street

10736.52 Palm St.

Plg.

664

Bottom of Creek

5+25.47

Olive St.

Plg.

Riv Line bet HA & Mt

24+84.28 27° 07' 45" Left

23+19.7 Pt on line

22+14.78 Vine St

21+78.15 Pt on line

19+17.6 Pt on line

Upas St

Pt on line

Thorn

Pt on line

Sassaparilla St

Monument 25

269.6

Pt

Pt

581.6

Pt

582.44

Pt

583.58

Pt

584.58

Pt

585.58

Pt

6
2
21

34+06.67

N line of Witherbee St. Old
Town Line

19

33+26.94

South line of Witherbee St.

30+53.99

Conte St.

26.72.99

Bandini St.

22+92.19

Wright St.

19+09.92

Estudillo St.

17+92.76

California St.

monument NO 1

81117
81118
81119
81120
81121
81122
81123
81124
81125
81126
81127
81128
81129
81130
81131
81132
81133
81134
81135
81136
81137
81138
81139
81140
81141
81142
81143
81144
81145
81146
81147
81148
81149
81150
81151
81152
81153
81154
81155
81156
81157
81158
81159
81160
81161
81162
81163
81164
81165
81166
81167
81168
81169
81170
81171
81172
81173
81174
81175
81176
81177
81178
81179
81180
81181
81182
81183
81184
81185
81186
81187
81188
81189
81190
81191
81192
81193
81194
81195
81196
81197
81198
81199
81200

Plg

Plg.

Plg.

Plg.

Plg.

Plg.

6
5
2
3
27
3
19

May 31 1889

Hamilton Box
 Wilson Lane
 Williams Road
 Hensley

9

Elevations on Sam Hucijo & Hensley R.R.

Sta	+	HO	-	Elev	Grade	Dist	Notes
B.M.	123	6.87		5.69			Subal. & B Sts
0			7.7	-0.83	3.0		line of B St.
1750			7.7	-0.83			
#	4.77	4.00	7.64	-0.77			
3			4.8	-0.80	2.5		line A St.
0			4.6	-0.60	2.5		line A St.
1750			5.2	-1.20			
3			4.9	-0.90	1.5		line Ash St.
0			5.1	-1.10	1.5		line Ash St.
1750			4.8	-0.80			
3			4.8	-0.80	1.5		line Beech St.
#	3.86	3.84	4.02	-0.02			
0			4.8	-0.96	1.5		line Beech St.
1750			4.6	-0.76			
3			4.7	-0.86	1.5		line Cedar St.
0			4.7	-0.86	1.5		line Cedar St.
1750			4.6	-0.76			
3			4.6	-0.76			
4710			4.8	-0.96	0.5		line Elm St.
#	11.90	14.56	1.18	2.66			
#	8.06	21.26	1.36	13.20			
			5.26	16.00			B.M. Call & dau. Sts

lined in by Bence (OK)

Levels on top of Outlet pipe front of Atlantic to Reservoir.

Sta	+	H ₂ O	-	Clev of top of Wharf	Tramp top of Wharf	Clev of Pipe
B. 9w	7.60	7.24		-0.36		
6 #	4.53	6.91	4.46	2.34		
8 0			5.03	1.88	7.92	- West line of Atlantic St.
+25			5.20	1.71	7.65	- 5
2 +50			5.09	1.97	7.83	- 5
3 +75			4.71	2.20	4.10	- 5
21 1			4.67	2.24	4.25	- 6
+25			4.70	2.21	4.30	- 6
19 +50			4.69	2.22	4.30	- 6
+75			4.71	2.20	4.25	- 6
2 +0			4.78	2.13	4.15	- 6
+25			4.77	2.14	4.29	- 6
+50			4.41	2.10	4.15	- 6
+75			4.42	2.09	4.23	- 6
3			4.83	2.08	4.24	- 6
+25			4.40	2.11	4.20	- 6
+50			4.42	2.08	4.18	- 6
+75			4.79	2.12	4.30	- 6
4			4.78	2.13	4.28	- 6
+25			4.78	2.13	4.25	- 6
+50			4.80	2.11	4.14	- 6

Levels on outlet pipe from West of Ath & H to Reservoir

Sta	+	HD	-	Ele	From top of Wharf	to g.l.
		6.91				
6	4+75		4.83	2.08	8.25	-6.1
2	5+0		4.80	2.11	8.20	-6.1
	+25		4.87	2.04	8.25	-6.1
2	+50		4.87	2.09	8.24	-6.1
3	#	4.44	6.53	4.42	2.09	
21	+75		4.50	2.03	8.29	-6.1
6			4.43	2.10	8.20	-6.1
19	+25		4.44	2.09	8.39	-6.1
	+50		4.50	2.00	8.24	-6.1
	+75		4.47	2.06	8.30	-6.1
7			4.44	2.09	8.37	-6.2
	+25		4.50	2.03	8.35	-6.3
	+50		4.45	2.08	8.40	-6.1
	+75		5.00	1.53		
8			5.04	1.49		
	+25		5.05	1.48		
	+50		5.08	1.45		
	+75		4.90	2.13	8.54	-6.1
9			4.40	2.13	8.50	-6.1
	+25		4.33	2.20	8.70	-6.1

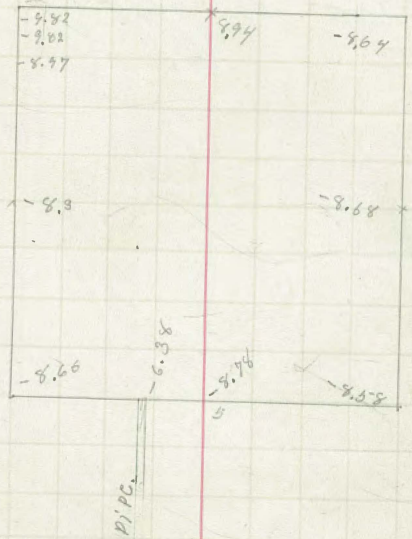
Levels top of Outlet pipe from West of 8th & H to Des Moines

Sta	+	H.D.	-	Elev		
		6.53				
9	9+50		4.34	2.19	4.61	-6
2	5 + 75		4.33	2.20	4.65	-6
	10		4.33	2.20	4.70	-6
2	+ 25		3.11	3.42	Cap at top	
3	+ 30		2.12	4.41	10.88	-6
21	+ 75		1.07	5.46	11.99	-6
3	11-		1.07	5.46	12.03	-6 Walk head
14	+ 03		1.08	5.45		-
	B.W.		7.99	-1.46		

It in first pile E from SW cor

Sta	+	H ₂	-	lev	measured height of tank	
B.M.	6.44	5.02		-1.46		
1			4.98	-0.04	8.90	
2			4.48	-0.04	8.60	
3			5.00	+0.02	8.70	
4			5.00	+0.02	8.60	
5			5.00	-0.02	8.8	
6			11.40	-6.38	Inside of Tank of pipe	
7			4.78	0.29	8.9	
8			4.98	0.09	4.7	
			Top of wall to gate chamber	5.09	-0.07	8.75
			Bottom of inlet	"	-8.90	-8.
			Bottom of bell chamber	"	8.75	-9.

Top of Reservoir



M. J. Division Line
FIFTH STREET

FIFTH STREET

14

6
2
2
3
21
3
19

Bandini

Wright

Estudillo

Wetherby

COUTS.

$$\begin{array}{r} 142.5 \\ 37.5 \\ \hline 104.8 \end{array}$$

$$\begin{array}{r} 176.2 \\ 37.0 \\ \hline 139.2 \end{array}$$

112.25

176.20

381.0

380.80

382.17

117.16

$$\begin{array}{r} 101.80 \\ 117.16 \\ \hline 218.96 \end{array}$$

$$\begin{array}{r} 161.1 \\ 37.5 \\ \hline 123.6 \end{array}$$

161.14

97° 53'

98° 21'

80.80

272.49

381.0

29° 48'

64° 2'

84° 26'

FIVE

Estudillo

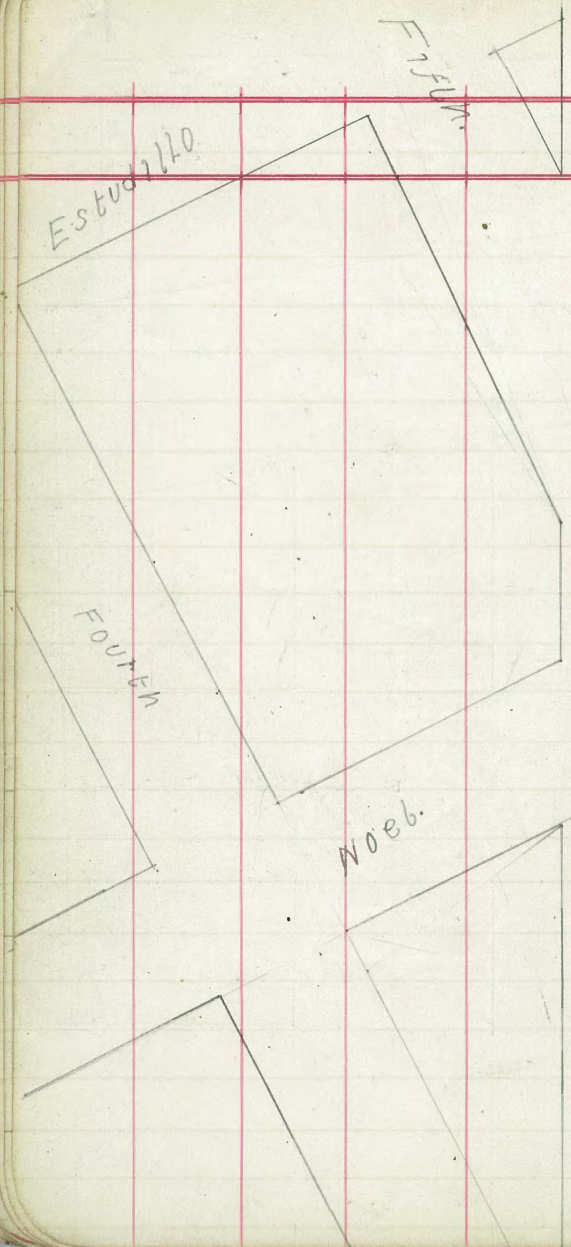
FOUR

Noeb.

COZUFORMAZA

26
STONE

6
8
2
3
21
3
19



June 5 1889

Hamilton
Dutton
Williams

16

Fourth Standard Line South, $35 \frac{34}{3}$ check of arch.

(R3W)

14+70.97 to Meander corner, Rig in Meander

N 62° 20' W

97.50 70° 58 Right

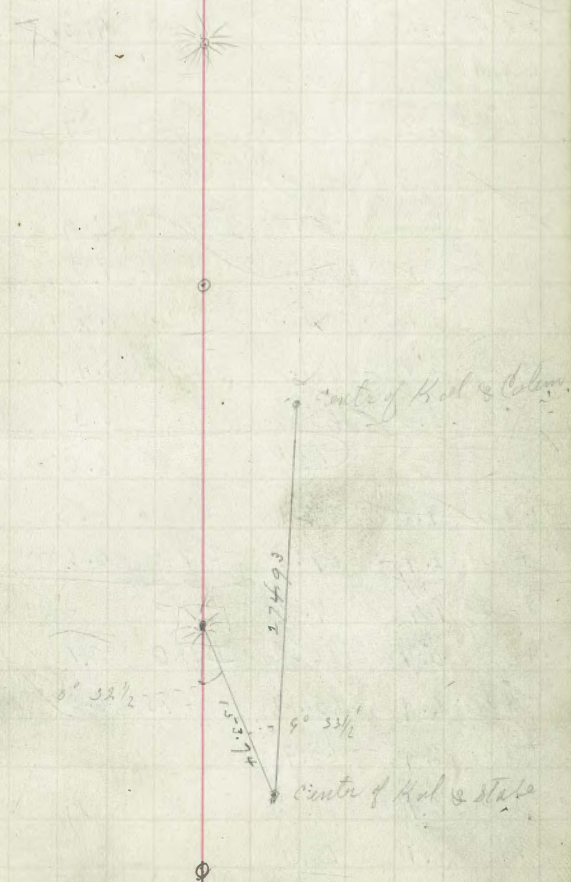
S 46° 06' W

0 80° 32 1/2 Right

Dep up on cor of Sec 2+3 34-2

B.S. to Centre of Kal & State

4 80° 32 1/2 Right



June 6 1889

Hambin Brook
 City Level **19**
 Williams Road
 Hensley

B.M. + H.S. Grade Rod - Curb Grades given

3 grades for Lots E & F. B.

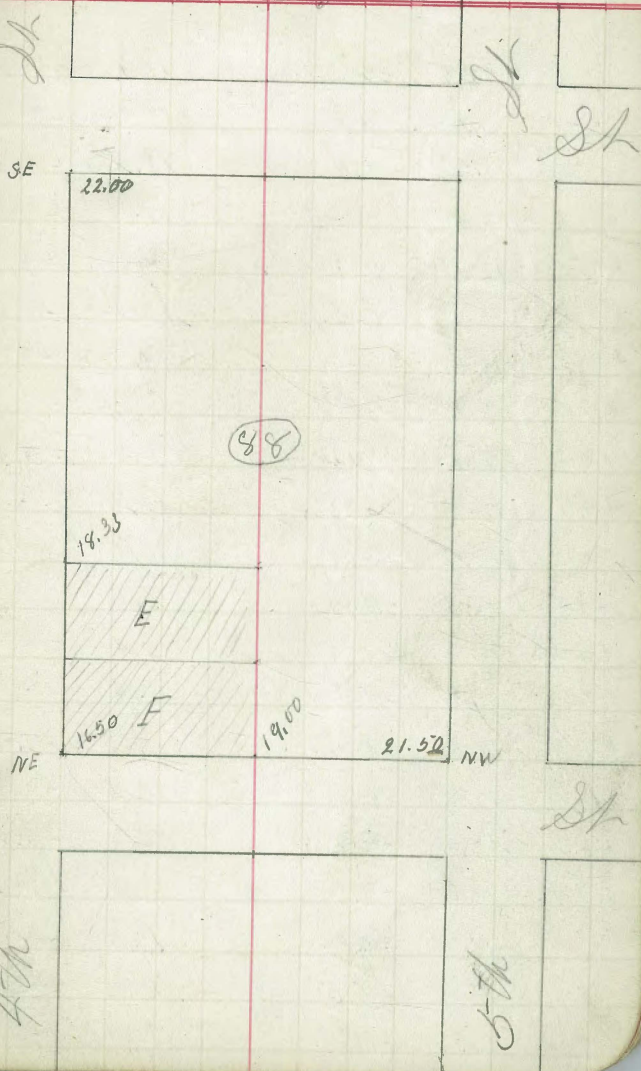
88 H.A.

For Mr. J.P. Baskett.

B.M.	No. of Rod		
24.465	0.155	24.620	
	NE	16.50	8.12 ✓
		17.0	6.29 ✓
		19.00	5.62 ✓
#	4435	24.965	4.09 2
B.M.	5th & H Sts		1.91 2

23.023	1.91	24.933	
		19.00	5.933
		16.50	8.433
#	4565	24.953	4.645 2
		14.33	6.523
B.M.	24.465	1.22	30.683
B.M.	28.329		0.39 B.M.
			2.33 B.M.

Chk
 J. M. Hensley
 City Eng.
 8/6/89



Elev in Sewer Reservoir

Sta	Top of deposit		Bottom of Time		+ H ₂ O	-	Elev
	Rod	Elev	Rod	Elev			
		(9.9)					
A	13.4	-8.5	13.4	-8.5	6.37	4.91	-1.46
+10	13.4	-8.5	13.9	-9.0			
+20	13.3	-8.4	13.5	-8.6			
+30	13.4	-8.5	13.7	-8.8			
+40	13.2	-8.3	14.0	-9.1			
+50	13.1	-8.2	13.6	-8.7			
+60	13.5	-8.6	13.8	-8.9			
+70	13.1	-8.2	13.6	-8.7			
+80	13.1	-8.2	13.4	-8.5			
+90	13.2	-8.3	13.4	-8.5			
1 +0	13.3	-8.4	13.7	-8.8			
+10	13.4	-8.5	13.5	-8.6			
+20	13.5	-8.6	13.8	-8.9			
+30	13.4	-8.5	13.8	-8.9			
+40	13.4	-8.5	13.7	-8.8			
+50	13.3	-8.4	13.8	-8.9			
+60	13.5	-8.6	14.2	-9.3			
+70	13.9	-9.0	14.9	-10.0			
+80	13.4	-8.5	13.7	-8.8			
+90	13.5	-8.5	13.5	-8.6			
2 +0	13.3	-8.4	13.5	-8.6			

Elev in Sewer Reservoir

	Top of Deposit		-3.3	Bottom of Tank		Stu	+	H ₂ O	-	Elev
	Rod	Elev		Rod	Elev					
B	4.9	8.2		5.1	-8.29			4.91		
+10	5.0	8.5		5.2	-8.5		2.99	-3.29	11.19	-6.24
+20	4.9	8.2		5.4	-8.7					
+30	5.0	8.5		5.5	-8.8					
+40	5.0	8.3		5.4	-8.7					
+50	4.8	8.1		5.5	-8.8					
+60	5.0	8.3		5.4	-8.7					
+70	4.4	8.1		5.2	-8.5					
+80	5.1	8.4		5.2	-8.5					
+90	5.1	8.4		5.3	-8.6					
1	5.0	8.3		5.4	-8.7					
+10	5.0	8.3		5.6	-8.9					
+20	5.1	8.4		5.6	-8.9					
+30	5.0	8.3		5.6	-8.9					
+40	5.1	8.4		5.5	-8.8					
+50	5.0	8.3		5.6	-8.9					
+60	5.0	8.3		5.4	-8.7					
+70	5.0	8.3		5.4	-8.7					
+80	4.9	8.2		5.3	-8.6					
+90	4.9	8.1		5.3	-8.6					
+100	5.2	8.5		5.6	-8.9					

Elev. in Sewer Reservoir

	Top of Hblfont		Bottom of T _o	
	Rod	Elev	Rod	Elev
				(-3.3)
b	4.9	-8.1	5.4	-8.7
+10	4.9	-8.2	5.2	-8.5
+20	4.9	-8.2	5.3	-8.6
+30	4.9	-8.2	5.4	-8.7
+40	4.9	-8.2	5.6	-8.9
+50	4.9	-8.2	5.5	-8.8
+60	5.0	-8.3	5.6	-8.9
+70	5.0	-8.8	5.4	-8.7
+80	5.0	-8.3	5.4	-8.7
+90	4.9	-8.2	5.3	-8.6
1	4.9	-8.2	5.3	-8.6
+10	5.0	-8.3	5.6	-8.9
+20	5.0	-8.3	5.6	-8.9
+30	4.9	-8.2	5.6	-8.8
+40	4.9	-8.2	6.0	-9.3
+50	5.2	-8.5	6.1	-9.1
+60	5.0	-8.3	5.8	-9.1
+70	5.0	-8.3	5.5	-8.6
+80	4.9	-8.2	5.2	-8.5
+90	4.8	-8.1	5.0	-8.3
200	4.8	-8.1	5.6	-8.9

Elev. in Sewer Reservoir

Sta	Top of Pipe			Bottom of Pipe	
	Rod Elev	Elev		Rod Elev	Elev
dh	4.9	-8.2	(-3.5)	5.5	-8.8
+10	5.0	-8.3		5.4	-8.7
+20	5.0	-8.3		5.3	-8.8
+30	5.0	-8.3		5.6	-8.9
+40	4.9	-8.2		5.5	-8.8
+50	4.9	-8.2		5.5	-8.8
+60	5.0	-8.3		5.4	-8.7
+70	5.0	-8.3		5.6	-8.9
+80	5.0	-8.3		5.3	-8.6
+90	5.0	-8.3		5.3	-8.6
1	4.8	-8.1		5.1	-8.4
+10	5.0	-8.3		5.4	-8.7
+20	5.0	-8.3		5.6	-9.1
+30	5.0	-8.3		5.4	-9.7
+40	5.1	-8.4		5.7	9.0
+50	4.9	-8.2		5.4	-8.7
+60	4.9	-8.2		5.4	-9.7
+70	4.9	-8.2		5.5	-8.8
+80	4.7	-8.0		5.0	-9.3
+90	4.7	-8.0		4.9	-8.2
2.00	4.9	-8.2		5.3	-8.6

Elev. in Sewer Reservoir

	Top of Deposit		Bottom of Deposit	
	Rod	Elev	Rod	Elev
				(-3.3)
0	5.0	-8.3	5.3	-8.6
+10	4.9	-8.2	5.3	-8.6
+20	4.9	-8.2	5.5	-8.8
+30	5.0	-8.3	5.9	-9.2
+40	4.9	-8.2	5.7	-9.0
+50	4.8	-8.1	5.3	-8.6
+60	5.0	-8.3	5.9	-9.2
+70	5.0	-8.3	5.6	-8.9
+80	5.0	-8.3	5.5	-8.8
+90	4.8	-8.1	5.4	-8.7
+100	4.8	-8.1	5.4	-8.7
+110	4.9	-8.2	5.5	-8.8
+120	5.0	-8.3	6.0	-9.3
+130	4.9	-8.2	5.9	-9.2
+140	5.0	-8.3	5.3	-8.6
+150	4.8	-8.1	5.6	-8.9
+160	4.7	-8.0	5.0	-8.3
+170	4.8	-8.1	5.2	-8.5
+180	4.7	-8.0	4.9	-8.2
+190	4.8	-8.1	5.0	-8.3
+200	4.8	-8.1	5.1	-8.4

Elev. in Sewer Reservoir

	Top of Deposit		Bottom of Tank	
	Rod	Elev	Rod	Elev
		(-3.3)		
T	4.8	8.1	5.8	-8.6
+10	4.8	-8.1	5.4	-8.7
+20	4.8	-8.1	5.4	-8.7
+30	4.8	-8.1	5.0	-8.3
+40	4.8	-8.1	5.5	-8.8
+50	4.8	-8.1	5.2	-8.5
+60	4.9	-8.2	5.5	-8.8
+70	5.0	-8.3	5.6	-8.9
+80	4.9	-8.2	5.4	-8.7
+90	4.8	-8.1	5.5	-8.8
1+0	4.9	-8.2	5.5	-8.8
+10	4.9	-8.2	5.9	-9.2
+20	4.9	-8.2	5.6	-8.9
+30	4.9	-8.2	5.6	-8.9
+40	5.0	-8.3	5.9	-9.2
+50	4.8	-8.1	5.4	-8.7
+60	4.8	-8.1	5.0	-8.3
+70	4.9	-8.2	5.5	-8.8
+80	4.8	-8.1	5.1	-8.4
+90	4.9	-8.2	5.2	-8.5
2+0	4.8	-8.1	5.0	-8.3

Elev in Sewer Reservoir

	Top of Reservoir		Bottom of Pipe	
	Rod	Elev	Rod	Elev
				(+3.3)
B	4.7	-8.0	5.3	-8.6
+10	4.8	-8.1	5.4	-8.7
+20	4.9	-8.2	5.4	-8.7
+30	4.7	-8.0	5.3	-8.6
+40	4.8	-8.1	5.4	-8.7
+50	4.9	-8.2	5.5	-8.8
+60	4.9	-8.2	5.5	-8.8
+70	4.8	-8.1	5.3	-8.8
+80	4.9	-8.2	5.7	-9.0
+90	4.9	-8.2	5.5	-8.8
1	4.8	-8.1	5.2	-8.9
+10	4.8	-8.1	6.2	-9.5
+20	4.8	-8.1	5.7	-9.0
+30	4.8	-8.1	5.6	-8.9
+40	4.8	-8.1	6.2	-9.5
+50	4.9	-8.2	5.8	-9.1
+60	4.9	-8.2	5.7	-9.0
+70	4.8	-8.1	5.2	-8.5
+80	4.8	-8.1	5.6	-8.9
+90	4.8	-8.1	5.2	-8.5
2+0	4.8	-8.1	5.4	-8.7

Elev in Sewer Reservoir

Top of Reservoir

Bottom of Tank

	Rod	Elev		Rod	Elev
			(-3.5)		
H	4.9	-8.2		5.5	-8.6
+10	4.9	-8.2		5.5	-8.8
+20	4.9	-8.2		5.4	-8.7
+30	4.9	-8.2		5.5	-8.8
+40	4.8	-8.1		5.6	-8.9
+50	4.8	-8.2		5.7	-8.4
+60	4.9	-8.2		5.6	-8.9
+70	4.9	-8.2		5.4	-8.7
+80	4.9	-8.2		5.5	-8.8
+90	4.9	-8.2		5.6	-8.9
1	4.8	-8.1		5.5	-8.8
+10	4.8	-8.1		6.1	-9.4
+20	4.8	-8.1		5.9	-9.2
+30	4.8	-8.1		6.2	-9.5
+40	4.9	-8.2		5.9	-9.2
+50	4.8	-8.1		5.3	-8.6
+60	4.8	-8.1		5.5	-8.8
+70	4.8	-8.1		5.3	-8.6
+80	4.8	-8.1		5.4	-8.7
+90	4.9	-8.2		5.4	-8.7
2+0	4.9	-8.2		5.3	-8.6

Elev. in Sewer Reservoir

Top of Deposit Bottom of T_o

Sta	Rod	Elev		Rod	Elev
			- 3.3		
J	4.8	- 8.1		3.6	- 8.9
+10	4.8	- 8.1		3.5	- 8.8
+20	4.9	- 8.2		3.4	- 8.7
+30	4.9	- 8.2		3.5	- 8.8
+40	4.9	- 8.2		3.5	- 8.8
+50	4.9	- 8.2		3.6	- 8.9
+60	5.0	- 8.3		3.5	- 8.8
+70	4.9	- 8.2		3.5	- 8.8
+80	4.9	- 8.2		3.4	- 8.7
+90	4.8	- 8.1		3.5	- 8.8
1	4.8	- 8.1		3.3	- 8.6
+10	4.8	- 8.1		3.0	- 8.3
+20	4.8	- 8.1		3.2	- 8.5
+30	4.8	- 8.1		3.5	- 8.8
+40	4.8	- 8.1		3.2	- 8.5
+50	4.8	- 8.1		3.6	- 8.9
+60	4.9	- 8.2		3.5	- 8.8
+70	4.8	- 8.1		3.4	- 8.7
+80	4.9	- 8.2		3.5	- 8.8
+90	4.8	- 8.1		3.5	- 8.8
+20	4.9	- 8.2		3.3	- 8.6

+ Elev in Sewer Reservoir

Top of Hefoist

Bottom of Tomb

	Rod	Elev.		Rod	Elev.
			(-8.3)		
6	+10	3.1		3.5	-8.8
	+20	4.6		3.4	-8.7
2	+30	5.1		3.4	-8.7
	+40	5.0		3.5	-8.8
2	+50	5.2		3.4	-8.7
3	+60	5.2		3.4	-8.7
	+70	5.3		3.5	-8.8
21	+80	5.3		3.4	-8.7
	+90	5.3		3.4	-8.7
191	+100	5.1		3.4	-8.7
	+110	4.8		3.4	-8.7
	+120	4.8		3.5	-8.8
	+130	5.6		3.4	-8.7
	+140	4.9		3.3	-8.6
	+150	4.8		3.2	-8.5
	+160	4.8		3.4	-8.7
	+170	5.1		3.3	-8.6
	+180	4.8		3.2	-8.5
	+190	5.3		3.3	-8.6
	+200	5.1		3.3	-8.6

Elev in Sewer Reservoir

Top of Reservoir Bottom of Reservoir

	Top of Reservoir		Bottom of Reservoir	
	Rod	Elev	Rod	Elev
				(-3.3)
R	5.0	-8.3	5.5	-8.8
+10	5.1	-8.4	5.4	-8.7
+20	4.9	-8.2	5.4	-8.7
+30	5.1	-8.4	5.4	-8.7
+40	5.1	-8.4	5.4	-8.7
+50	5.2	-8.5	5.4	-8.7
+60	5.1	-8.4	5.4	-8.7
+70	5.1	-8.4	5.4	-8.7
+80	4.9	-8.2	5.4	-8.7
+90	5.2	-8.5	5.3	-8.6
+100	5.1	-8.4	5.3	-8.6
+110	4.9	-8.2	5.5	-8.8
+120	4.9	-8.2	5.4	-8.7
+130	5.0	-8.3	5.4	-8.7
+140	4.8	-8.1	5.4	-8.7
+150	4.8	-8.1	5.5	-8.8
+160	4.8	-8.1	5.4	-8.7
+170	4.7	-8.0	5.3	-8.6
+180	4.8	-8.1	5.3	-8.6
+190	4.8	-8.1	5.0	-8.3
+200	4.8	-8.1	5.5	-8.8

Elev in Sewer Reservoir

Sta	Top of Deposit		Bottom of Deposit	Bottom of Deposit	
	Rod	Elev		Rod	Elev
			(-3.3)		
L	4.9	-8.2	5.5	-8.8	
+10	4.8	-8.1	5.3	-8.6	
+20	5.0	-8.3	5.5	-8.8	
+30	5.0	-8.3	5.5	-8.8	
+40	5.0	-8.3	5.5	-8.9	
+50	4.9	-8.2	5.4	-8.7	
+60	4.9	-8.2	5.6	-8.9	
+70	5.3	-8.6	-5.3	-8.6	
+80	5.1	-8.4	5.3	-8.6	
+90	5.1	-8.4	5.4	-8.7	
1	5.0	-8.3	5.4	-8.7	
+10	4.9	-8.2	5.4	-8.7	
+20	5.0	-8.3	5.3	-8.6	
+30	4.9	-8.2	5.3	-8.6	
+40	4.8	-8.1	5.4	-8.7	
+50	4.8	-8.1	5.4	-8.7	
+60	4.8	-8.1	5.4	-8.7	
+70	4.7	-8.0	5.2	-8.5	
+80	4.8	-8.1	6.0	-9.3	
+90	4.7	-8.0	5.4	-8.7	
2+0	4.8	-8.1	5.4	-8.7	

Elev in Sewer Reservoir

3.3
4.9
-1.6

	Top of Deposit		-3.3	Bottom of Tank		In	Top of Deposit		-3.3	Bottom of Tank	
	Rod	Elev		Rod	Elev		Rod	Elev		Rod	Elev
0											
10	4.9	-8.2		5.6	-8.9		4.8	-8.1		5.4	-8.7
20	4.9	-8.2		5.4	-8.7	10	4.9	-8.2		5.3	-8.6
30	4.9	-8.2		5.5	-8.8	20	4.8	-8.1		5.4	-8.7
40	5.1	-8.4		5.5	-8.8	30	4.9	-8.2		5.6	-8.9
50	5.1	-8.4		5.4	-8.7	40	5.0	-8.3		5.4	-8.7
60	5.0	-8.3		5.4	-8.7	50	4.9	-8.2		5.5	-8.8
70	4.9	-8.2		5.4	-8.7	60	4.9	-8.2		5.3	-8.6
80	5.0	-8.3		5.4	-8.7	70	4.9	-8.2		5.3	-8.6
90	4.9	-8.2		5.4	-8.7	80	5.0	-8.3		5.4	-8.7
100	4.9	-8.2		5.4	-8.7	90	4.9	-8.2		5.4	-8.7
110	4.9	-8.2		5.4	-8.7	100	4.9	-8.2		5.5	-8.8
120	4.9	-8.2		5.4	-8.7	110	5.1	-8.4		5.3	-8.6
130	4.9	-8.2		5.4	-8.7	120	4.9	-8.2		5.4	-8.7
140	4.9	-8.2		5.3	-8.6	130	5.0	-8.3		5.4	-8.7
150	4.8	-8.1		5.4	-8.7	140	4.9	-8.2		5.4	-8.7
160	4.8	-8.1		5.3	-8.6	150	4.9	-8.2		5.4	-8.7
170	4.8	-8.1		5.3	-8.6	160	4.9	-8.2		5.4	-8.7
180	4.7	-8.0		5.3	-8.6	170	4.8	-8.1		5.3	-8.6
190	4.8	-8.1		6.1	-9.1	180	4.8	-8.1		5.9	-9.2
200	4.6	-7.9		4.7	-8.0	190	4.9	-8.2		4.9	-8.2
210	4.7	-8.0		5.5	-8.8	200	4.4	-7.7		4.7	-8.0

Elev in Sewer Reservoir

33

Top of 24" Pipe

Bottom of Tank

	Rod	Elev	Rod	Elev
		(-3.3)		
0	4.8	-8.1	5.3	-8.6
+10	4.9	-8.2	5.4	-8.7
+20	4.9	-8.2	5.4	-8.7
+30	5.0	-8.3	5.5	-8.8
+40	5.0	-8.3	5.6	-8.9
+50	4.9	-8.2	5.5	-8.8
+60	5.0	-8.3	5.5	-8.8
+70	4.9	-8.2	5.4	-8.7
+80	4.9	-8.2	5.7	-9.0
+90	5.0	-8.3	5.4	-8.7
1+0	5.0	-8.3	5.4	-8.7
+10	5.1	-8.4	5.9	-9.2
+20	5.0	-8.3	5.8	-9.1
+30	5.0	-8.3	5.8	-9.1
+40	4.8	-8.1	5.5	-8.8
+50	4.9	-8.2	5.4	-8.7
+60	4.8	-8.1	5.4	-8.7
+70	4.9	-8.2	5.4	-8.7
+80	4.9	-8.2	6.0	-9.3
+90	4.6	-7.9	6.7	10.0
2+0	4.2	-7.5	4.3	7.6

Levee in Sewer Reservoir

Sta	Top of Deposit		Bottom of Tomb		+	HO	-	Elev
	Rod	Elev	Rod	Elev				
P	5.1	-8.5	5.4	-9.8	2.86	3.42		-6.28
+10	5.1	-8.5	5.5	-9.9				
+20	5.3	-8.7	5.6	-9.0				
+30	5.2	-8.6	5.7	-9.1				
+40	5.2	-8.5	5.7	-9.1				
+50	5.2	-8.5	5.6	-9.0				
+60	5.1	-8.5	5.6	-9.0				
+70	5.1	-8.5	5.6	-9.0				
+80	5.1	-8.5	5.7	-9.1				
+90	5.1	-8.5	6.0	-9.4				
1	5.0	-8.4	5.5	-8.9				
+10	5.0	-8.4	5.5	-8.9				
+20	5.1	-8.5	5.9	-9.3				
+30	5.0	-8.4	5.4	-9.2				
+40	5.0	-8.4	5.6	-9.0				
+50	4.9	-8.3	5.4	-8.8				
+60	4.8	-8.2	5.3	-8.7				
+70	4.8	-8.2	5.2	-8.6				
+80	4.8	-8.2	5.2	-8.6				
+90	4.7	-8.1	6.1	-9.3				
2+0	4.6	-8.0	5.3	-8.7				

Elev. in Sewer Reservoir

	Top of Staff		Bottom of Staff	
	Rod	Elev	Rod	Elev
		(3.4)		
0	5.2	-8.6	5.7	-9.1
+10	5.2	-8.6	5.7	-9.1
+20	5.0	-8.4	5.1	-8.5
+30	5.2	-8.6	5.7	-9.1
+40	5.2	-9.6	5.4	-9.2
+50	5.2	-8.6	6.1	-9.5
+60	5.2	-8.6	5.9	-9.3
+70	5.1	-8.5	6.4	-9.4
+80	5.1	-8.5	5.5	-8.9
+90	5.0	-8.4	5.4	-9.2
1 +0	5.0	-8.4	5.5	-8.9
+10	5.0	-8.4	5.3	-8.7
+20	5.0	-8.4	5.4	-8.8
+30	5.0	-8.4	5.4	-8.8
+40	4.9	-8.3	5.3	-8.7
+50	4.9	-8.3	5.2	-8.6
+60	4.8	-8.2	5.3	-8.7
+70	4.8	-8.2	5.2	-8.6
+80	4.7	-8.1	5.1	-8.5
+90	4.7	-8.1	5.0	-8.4
2 +0	4.7	-8.1	5.2	-8.6

Elev in Sewer Reservoir

36

Sta	Top of Reservoir		Bottom of Reservoir	
	Rod	Elev	Rod	Elev
R	4.6	-7.9	4.6	
+10	5.2	-8.6	5.7	-9.1
+20	5.3	-8.7	5.8	-8.8
+30	5.2	-8.6	5.4	-8.8
+40	5.2	-8.6	5.5	-8.9
+50	5.1	-8.5	5.6	-9.0
+60	5.1	-8.5	5.6	-9.0
+70	5.1	-8.5	6.0	-9.4
+80	5.1	-8.5	5.6	-9.0
+90	5.1	-8.5	5.5	-8.9
+100	5.0	-8.4	5.3	-8.7
+110	5.0	-8.4	5.3	-8.7
+120	5.0	-8.4	5.6	-9.0
+130	5.1	-8.5	5.4	-8.8
+140	5.0	-8.4	5.3	-8.7
+150	5.0	-8.4	5.4	-8.8
+160	5.0	-8.4	5.3	-8.7
+170	4.9	-8.3	5.2	-8.6
+180	4.8	-8.2	5.1	-8.5
+190	4.8	-8.2	5.3	-8.7
+200	4.7	-8.1	5.2	-8.6

Elev in Sewer Reservoir

Top of Hydrant Bottom of Jo

Sta	Rd	Elev	Rd	Elev
		(-3.4)		
8	4.2	-8.6	4.3	-8.7
+10	4.8	-8.2	4.9	-8.3
+20	5.2	-8.6	5.7	-9.1
+30	5.2	-8.5	5.6	-9.0
+40	5.1	-8.5	5.4	-8.8
+50	5.2	-8.6	5.6	-9.0
+60	5.1	-8.5	5.6	-9.0
+70	5.1	-8.5	5.3	-8.7
+80	5.1	-8.5	5.5	-8.9
+90	5.1	-8.5	5.4	-8.8
1	5.1	-8.5	5.4	-8.8
+10	5.1	-8.5	5.3	-8.7
+20	5.1	-8.5	5.3	-8.7
+30	5.0	-8.4	5.3	-8.7
+40	5.0	-8.4	5.1	-8.5
+50	5.0	-8.4	5.2	-8.6
+60	5.0	-8.4	5.2	-8.6
+70	4.9	-8.3	5.2	-8.6
+80	4.8	-8.2	5.2	-8.6
+90	4.7	-8.1	5.3	-8.7
2	4.7	-8.1	5.2	-8.6

Elev in Sewer Reservoir

Top of Surface			Bottom of Top		Rod	Elev	Rod	Elev
Sta	Rod	Elev	Rod	Elev				
		(-3.7)						
	+10							
	+20	Tank - house						
	+30	5.7	-8.1	6.3	-8.7			5' West to Tank house
	+40	4.7	-8.1	4.7	-7.1			5.7 - 8.7
	+50	3.2	-8.6	5.7	-9.1			5.8 - 9.2
	+60	5.1	-8.5	5.5	-8.9			
	+70	5.2	-8.6	5.9	-9.3			
	+80	5.1	-8.5	5.9	-8.8			
	+90	5.1	-8.5	5.4	-8.9			
	1	5.1	-8.5	5.9	-8.8			
	+10	5.1	-8.5	5.3	-8.7			
	+20	5.1	-8.5	5.9	-8.9			
	+30	5.1	-8.5	5.3	-8.7			
	+40	5.1	-8.5	5.5	-8.9			
	+50	5.0	-8.4	5.1	-8.5			
	+60	4.9	-8.3	5.2	-8.6			
	+70	4.9	-8.3	5.3	-8.7			
	+80	4.8	-8.2	5.2	-8.6			
	+90	4.9	-8.2	5.2	-8.6			
	2	4.8	-8.2	5.1	-8.5			

At Tank sounding at Tank house
 house 4.2 below bottom
 At Jones 14.7 cor
 At corner between Shore R. & D
 At Lusk cor 11.5

Elev in Sewer Reservoir

Sta	Top of Deposit		Bottom of Deposit	
	Rod	Blw	Rod	Blw
		-3.4		
0				
10				
20				
30	5.1	-8.5	5.9	9.3
40	4.6	-8.0	4.9	-8.3
50	5.2	-8.6	5.7	-9.1
60	5.1	-8.5	5.6	-9.0
70	6.5	9.9	6.9	-10.3
80	5.1	-8.5	5.8	-9.3
90	4.2	-7.7	5.2	-8.6
1	5.0	-8.4	5.5	-8.9
110	5.0	-8.4	5.4	-8.8
120	5.0	8.4	5.3	-8.7
130	4.9	-8.3	5.2	-8.6
140	4.9	-8.3	5.3	-8.7
150	4.9	-8.3	5.3	-8.7
160	4.8	-8.2	5.3	-8.7
170	4.8	-8.2	5.3	-8.7
180	4.7	-8.1	5.4	8.8
190	4.8	-8.2	5.2	-8.6
200	4.7	-8.1	5.2	-8.6

Trunk-house

X Section of 32nd St

see X see Book Index

June 17 1889

Hambin Book
Orton Level
Willie's Rod
Hensley "

40

West		Cent.		East			+	H.O.	-	Elev.
Rod	Elev	Rod	Elev	Rod	Elev	Stn.	1.87	47.84		46.01
						B.M. at top of	0.21	57.56	10.55	37.35
		(27.4)				B.M. at Bay St. W.			9.92	29.14
		7.8	7.6	7.20		#	1.13	27.36	11.33	26.23
11.4	16.8	9.8	17.6	12.0	15.4	1175	8.34	34.57	1.13	26.23
2.0	25.4	1.0	26.4	2.3	25.1	2+				
		(34.6)								
8.0	26.6	6.4	27.4	7.4	27.2	+25				
7.8	26.8	6.7	27.9	6.9	27.7	+5				
7.4	27.2	6.6	28.0	6.6	28.0	+75				
7.1	27.5	6.4	28.2	6.4	28.2	3				
6.5	28.1	6.0	28.6	6.3	28.3	+40				
5.4	29.2	5.8	28.8	7.5	27.1	0				
4.9	29.7	5.4	28.8	7.4	26.7	+25				
4.5	30.1	5.5	29.1	7.3	27.3	+30				
4.1	30.5	4.9	29.7	6.5	28.1	+75				
4.8	29.8	4.8	29.9	6.0	28.6	+10				
4.8	29.4	4.5	30.1	5.8	28.8	+2				
3.1	31.5	4.1	30.3	5.2	29.4	+5				
2.4	31.7	3.3	31.3	4.1	30.3	+25				
2.0	32.6	2.7	31.9	3.5	31.1	2+				

S Line Bay St

Bay St

N Line Bay St con.

5.94 29.13

x Sections 32 n St

June 17 1889

Hambin Book
 Cotton Level 41
 Williams Road
 Hensley

West		Center		East		+	HO	Elev	
Rod	Elev	Rod	Elev	Rod	Elev				
			34.6						
1.6	33.0	2.2	32.4	2.4	32.2	2+2			
0.9	33.7	1.7	32.9	2.0	32.6	+3			
0.2	34.4	0.9	33.7	1.2	33.4	+1			
		(45.6)							
10.6	35.0	11.3	34.3	11.4	34.2	3	11.85	45.60	0.82 33.75
9.2	36.4	10.0	35.6	10.5	35.1	+40	S line Colton Ave		
8.3	37.3	9.1	36.5	9.7	35.9	0	Colton		
7.4	38.2	8.5	37.3	8.5	37.1	+25	N line Colton Ave		
5.7	39.9	7.0	38.6	7.4	38.2	+35			9.25 37.35
4.0	41.6	5.7	39.9	6.8	38.8	+75			
				6.4	39.2	+93	Intersection SW line O Ave		
3.0	42.6	4.7	40.9	6.3	39.3	1			
2.3	43.3	4.0	41.6	7.1	38.5	+25			
2.1	43.5			7.1		+48	Intersection SW line O Ave ✓		
2.5	43.1	5.4	40.2	6.5	39.1	+50			
3.9	41.7	5.6	40.0	6.7	38.9	+75			
				4.1	37.5	+97	Intersection NE line O Ave ✓		
4.5	41.1	6.5	39.1	4.5	37.3	2+0			
6.5	38.2	6.5	38.7	7.2	36.4	+2			
6	37.1	6.0	38.3	7.3	36.4	+2			

X Sections 32nd St

June 17 1888

West		Center		East		Dist
Rod	Elev	Rod	Elev	Rod	Elev	
			(45.6)			
6.6	39.0	7.8	37.8	9.7	35.9	+23
7.3	38.3					+47.1
7.3	38.3	9.8	35.8	12.1	33.5	+5
8.0	37.6	10.9	34.7	13.1	32.5	+73
9.0	36.6	11.9	33.7	14.1	31.5	+30
			(34.6)			#
1.8	32.8	6.8	27.8	11.1	23.5	+40
9.8	24.8	12.8	21.8	14.8	19.8	0
10.6	24.0	11.7	22.9	12.4	22.2	+23
6.8	27.8	7.9	26.7	9.4	25.2	+30
3.2	31.4	4.5	30.1	6.4	28.2	+75
0.0	34.6	1.6	33.0	3.2	31.4	+10
			(41.6)			#
4.4	37.2	6.5	35.1	7.9	33.7	+25
2.3	39.3	5.4	36.2	7.1	34.5	+50
1.4	40.2	5.7	35.9	9.2	32.4	+75
0.6	41.0	4.7	32.9	12.5	29.1	+20
1.7	39.9	10.5	31.1	12.3	29.3	+25
6.2	35.4	10.9	30.7	8.5	33.5	+30

+ Ho - Elev

45.60

Intersection NE line 3 Ave ✓

S line of Topeka Ave

0.51 34.57 11.84 33.76

Topeka

N line Topeka Ave

8.93 41.62 1.84 32.69

X Sections 32nd St

June 17 1889

Hambin Book
 Oxtor Level
 Williams Rod
 Hensley

43

West		Centre		East	
Rod	Ele	Rod	Ele	Rod	Ele
			41.0		
7.0	34.6	8.5	33.1	3.8	37.8
7.5	34.1	5.1	36.5	1.5	40.1
			47.4		
10.6	36.8	7.4	40.0	4.9	42.5
8.6	38.8	6.2	41.2	3.4	44.0

41.62

S line Boston Ave

8.08 47.36 2.57 39.24

Boston Ave

N line Boston Ave

B.W. Topka & 32nd 1.38 45.99

46.01

NE Sections of Oliver Ave.

S.W. Side		Center		S.W. H.E. Side					
Avd	Elev	Rod	Elev	Avd	Elev	Sta	+	-	Elev
							0.37		21.07
							1.13		10.83
							0.78		0.93
4.8	-4.0	4.5	-3.7	4.8	-4.0	6			20.70
		(0.8)				#			9.80
						#			10.78
4.5	-3.7	4.4	-3.6	4.6	-3.8	6			
4.6	-3.8	4.4	-3.6	4.8	-4.0	0			
4.9	-4.0	5.0	-4.2	4.4	-3.6	0			
4.0	-3.2	4.6	-3.8	4.8	-3.5	1			
5.6	-4.8	5.0	-4.2	4.0	-3.2	1			
6.1	-5.3	5.8	-5.0	5.2	-4.4	2			
6.2	-5.4	6.0	-5.2	5.9	-5.1	2			
6.2	-5.4	6.1	-5.3	5.9	-5.1	3			
6.1	-5.3	5.9	-5.1	5.7	-4.9	3			
6.3	-5.5	5.9	-5.1	5.4	-4.6	4			
6.3	-5.5	6.1	-5.3	5.6	-4.8	4			
6.3	-5.5	6.4	-5.6	5.9	-5.1	5			
6.5	-5.7	6.4	-5.6	5.8	-5.0	5			
6.6	-5.9	6.2	-5.4	5.4	-4.6	6			
6.6	-5.8	6.0	-5.2	4.7	-3.9	6			
6.6	-5.8	6.2	-5.4	4.6	-3.8	0			
6.6	-5.8	6.0	-5.2	3.9	-3.1	0			

SE line 20th St

NW line 20th St

SE line 19th St

NW line 19th St

6
3

X Section Olive Ave

SW side		center	NE side		+	H.O	-	Elev	
Rod	Elev	Rod	Elev	Rod	Elev				
6.5	-5.7	5.3	-4.5	3.3	-2.5	1			
6.2	-5.4	4.5	-3.7	4.2	-3.4	+5	4.50		
6.1	-5.3	4.3	-3.5	4.2	-3.4	2			
5.5	-4.7	3.0	-2.2	4.2	-3.4	+3	4.50		
5.0	-4.2	4.5	-3.7	4.3	-3.5	3			
4.4	-3.6	4.4	-3.6	4.7	-3.9	+5	4.50		
		(4.6)				#	5.17	4.61	1.39
9.5	-4.9	9.7	-5.1	9.2	-4.6	4			
8.0	-3.4	8.2	-3.6	7.9	-3.3	+5	4.50		
8.1	-3.5	8.0	-3.4	8.0	-3.4	5			
				6.2	-1.6	+3	4.50		
4.2	0.4	5.4	-0.8	5.2	-0.6	+3	4.64		
		6.2	(2.6)	2.4					
1.9	2.7	26.5 in SW	2.4	Elev	SW line H.A.	6			
0.8	3.8					+3.3			
						7.74	8.60	0.86	
				8.0	-3.5	47.5			
				8.0	-3.4	45'			

Intersection NE line Olive Ave with S line H.A.

Intersection centerline with S line H.A.

S line H.A. 0 H.A.

Intersection SW line with S line 3.78 0.83

7.74 8.60 0.86

Intersections of Edine 11th St with NE of Olive.
45' from fork to S line of H.A. cor Edine
of 11th St

X Section 4th St

Grade 4th St 95.5

N 97.5

S 109.5

N 111.3

Cedar

Westcut		Center		Cosh Cut		+	#	-	Elev
		(92.4)							
Rod	Elev	Rod	Elev	Rod	Elev.				83.46
11.4	80.0	10.9	81.5	10.6	81.9	0	8.92	92.36	
						0	W Line Ash St		
9.6	82.8	9.9	83.5	9.1	82.4	+50			
7.3	85.1	6.8	85.6	6.8	85.6	1			
5.3	87.1	4.6	87.8	4.5	87.9	+50			
3.4	89.0	2.5	89.9	2.5	89.9	2			
1.1	91.3	0.4	92.0	0.3	92.1	+50			
		(103.5)				#	11.71	103.51	0.56
10.0	93.5	9.7	93.8	9.8	93.7	3	S Line creek	2.53	94.14
8.2	94.2	7.6	95.7	7.1	96.4	+40			
							Pine		
6.6	96.9	6.3	97.2	6.1	97.4	0			
3.6	99.9	4.1	99.4	3.8	99.7	+50			
1.4	101.7	2.2	101.3	1.6	101.7	1			
		(114.0)				#	12.58	114.10	1.44
11.0	103.1	11.2	102.9	11.3	102.8	+50			
9.5	104.6	9.7	104.4	9.9	104.2	2			
8.1	106.0	8.0	106.1	7.5	106.6	+50			
6.4	107.7	6.4	107.7	6.2	107.9	3	S of Cedar		
4.4	109.7	4.9	109.2	3.7	110.4	+40	Cedar St		
3.8	110.3	3.7	110.4	3.4	110.7	0	E. W. N. of Cedar St	1.71	122.39

X Section of 4th St

West Curb		Center		East Curb		St	+	H ₂ O	-	Elev
Rod	Elev	Rod	Elev	Rod	Elev					
		(114.1)								
2.0	112.1	2.3	111.8	1.9	112.2	+5	11.39	119.14	0.18	113.92
0.3	113.8	0.5	113.6	0.3	113.8	1		123.31		
		(125.3)				#				
9.6	115.7	10.0	115.1	9.4	115.7	+5				
8.1	117.2	8.2	117.1	7.7	117.6	2				
6.4	114.7	6.8	114.5	6.2	119.1	+5				
4.9	120.4	5.2	120.1	4.5	120.8	3	5 line of H ₂ O	121.46		
4.1	121.2	3.9	121.4	2.4	122.9	+40	H ₂ O			
3.0	122.3	2.6	122.7	2.3	123.0	0	H ₂ O			

96

93

X Section 4th St

West Curb		Center		East Curb		St
Rod	Elev	Rod	Elev	Rod	Elev	

96

93

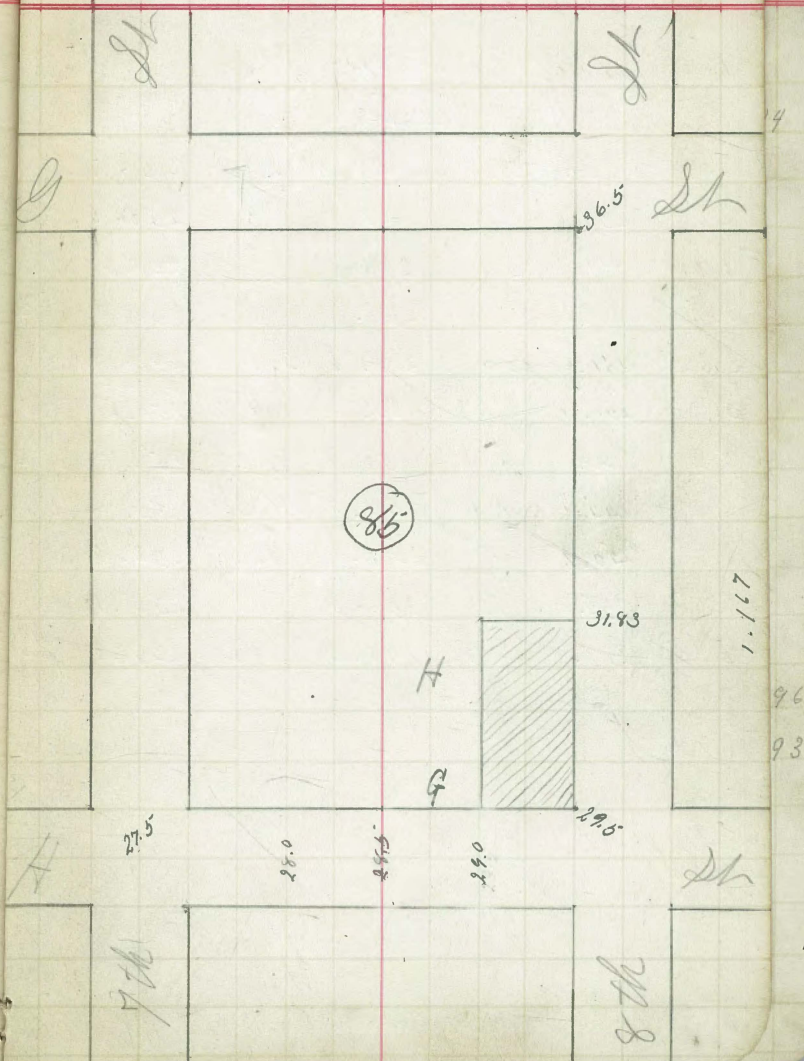
Ordered June 19 1889 49

Curb grades Lot G blk 85 High road Army Lot.

B M	+	H ₂	-	Grade Rod
-----	---	----------------	---	-----------

27.615	5.51	33.125	7th & H	
				29.0 4.125 ✓
				29.50 3.625 ✓
				31.43 1.295 ✓
31.015		2.11	7th & H	

Completed June 20 1889
 Hamlin Book
 Utter Level
 Williams Rod
 Hensley



X Section Maple St 5th St

to Park Boulevard.
June 24, 1889

Hank
Aster 50
William
Hensley.

North		Center		South		
Rod	Blv Curb	Rod	Blv	Rod	Blv Curb	Sta
			(281.9)			B9m
2.9	259.0	3.0	258.9	3.2	259.7	0
2.6	259.3	2.8	259.1	3.3	258.6	+50
2.9	259.0	3.0	258.9	3.3	258.6	1
3.5	258.4	2.9	259.0	3.0	258.9	+50
3.3	258.6	3.3	258.6	3.9	258.0	+88
5.0	256.9	6.3	255.6	7.9	254.0	2
8.7	253.2	9.1	252.8	9.1	252.8	+50
6.8	255.1	7.4	254.5	4.3	253.6	3
6.7	255.2	7.8	254.1	8.2	253.7	+50
6.3	255.6	5.8	256.1	6.8	255.1	4
4.4	257.1	5.4	256.5	4.5	257.4	+50
						#
						B9m

	+	KO	-	Blv
	3.45	261.89		258.94
Curb Line of 5th St				
Park Line				
Park Boulevard				
	7.43	266.39	2.93	258.96
			2.46	263.93
Nab. of 5th				

230
212
2776

Sta	x	HD	D	Obs
-----	---	----	---	-----

1
2
2
2
3
3
3
5
8
6
6
6

