

LEVEL BOOK

400

F. B. 362

H. S. CROCKER COMPANY

DRAWING MATERIALS AND
SURVEYING INSTRUMENTS

362

SAN FRANCISCO

TABLES FOR EXCAVATIONS AND EMBANKMENTS

DISTANCES FROM CENTER OF ROADWAY FOR CROSS-SECTIONING

Roadway 18 Feet Wide. Side Slopes 1 to 1.
For Single Track Excavation.

"Copyright, 1895, by Kueffel & Esser Co."

	0	.1	.2	.3	.4	.5	.6	.7	.8	.9	
0	9.0	9.1	9.2	9.3	9.4	9.5	9.6	9.7	9.8	9.9	0
1	10.0	10.1	10.2	10.3	10.4	10.5	10.6	10.7	10.8	10.9	1
2	11.0	11.1	11.2	11.3	11.4	11.5	11.6	11.7	11.8	11.9	2
3	12.0	12.1	12.2	12.3	12.4	12.5	12.6	12.7	12.8	12.9	3
4	13.0	13.1	13.2	13.3	13.4	13.5	13.6	13.7	13.8	13.9	4
5	14.0	14.1	14.2	14.3	14.4	14.5	14.6	14.7	14.8	14.9	5
6	15.0	15.1	15.2	15.3	15.4	15.5	15.6	15.7	15.8	15.9	6
7	16.0	16.1	16.2	16.3	16.4	16.5	16.6	16.7	16.8	16.9	7
8	17.0	17.1	17.2	17.3	17.4	17.5	17.6	17.7	17.8	17.9	8
9	18.0	18.1	18.2	18.3	18.4	18.5	18.6	18.7	18.8	18.9	9
10	19.0	19.1	19.2	19.3	19.4	19.5	19.6	19.7	19.8	19.9	10
11	20.0	20.1	20.2	20.3	20.4	20.5	20.6	20.7	20.8	20.9	11
12	21.0	21.1	21.2	21.3	21.4	21.5	21.6	21.7	21.8	21.9	12
13	22.0	22.1	22.2	22.3	22.4	22.5	22.6	22.7	22.8	22.9	13
14	23.0	23.1	23.2	23.3	23.4	23.5	23.6	23.7	23.8	23.9	14
15	24.0	24.1	24.2	24.3	24.4	24.5	24.6	24.7	24.8	24.9	15
16	25.0	25.1	25.2	25.3	25.4	25.5	25.6	25.7	25.8	25.9	16
17	26.0	26.1	26.2	26.3	26.4	26.5	26.6	26.7	26.8	26.9	17
18	27.0	27.1	27.2	27.3	27.4	27.5	27.6	27.7	27.8	27.9	18
19	28.0	28.1	28.2	28.3	28.4	28.5	28.6	28.7	28.8	28.9	19
20	29.0	29.1	29.2	29.3	29.4	29.5	29.6	29.7	29.8	29.9	20
21	30.0	30.1	30.2	30.3	30.4	30.5	30.6	30.7	30.8	30.9	21
22	31.0	31.1	31.2	31.3	31.4	31.5	31.6	31.7	31.8	31.9	22
23	32.0	32.1	32.2	32.3	32.4	32.5	32.6	32.7	32.8	32.9	23
24	33.0	33.1	33.2	33.3	33.4	33.5	33.6	33.7	33.8	33.9	24
25	34.0	34.1	34.2	34.3	34.4	34.5	34.6	34.7	34.8	34.9	25
26	35.0	35.1	35.2	35.3	35.4	35.5	35.6	35.7	35.8	35.9	26
27	36.0	36.1	36.2	36.3	36.4	36.5	36.6	36.7	36.8	36.9	27
28	37.0	37.1	37.2	37.3	37.4	37.5	37.6	37.7	37.8	37.9	28
29	38.0	38.1	38.2	38.3	38.4	38.5	38.6	38.7	38.8	38.9	29
30	39.0	39.1	39.2	39.3	39.4	39.5	39.6	39.7	39.8	39.9	30
31	40.0	40.1	40.2	40.3	40.4	40.5	40.6	40.7	40.8	40.9	31
32	41.0	41.1	41.2	41.3	41.4	41.5	41.6	41.7	41.8	41.9	32
33	42.0	42.1	42.2	42.3	42.4	42.5	42.6	42.7	42.8	42.9	33
34	43.0	43.1	43.2	43.3	43.4	43.5	43.6	43.7	43.8	43.9	34
35	44.0	44.1	44.2	44.3	44.4	44.5	44.6	44.7	44.8	44.9	35
36	45.0	45.1	45.2	45.3	45.4	45.5	45.6	45.7	45.8	45.9	36

Calculated by Julien A. Hall, M. Am. Soc. C. E.

70.-
20.
13
91.70
204.70

340
204.7
135.3

La Jolla 19
Mr. Barnett

63.03
41.87
204.90

20
20.
20
26
50.3
340.00

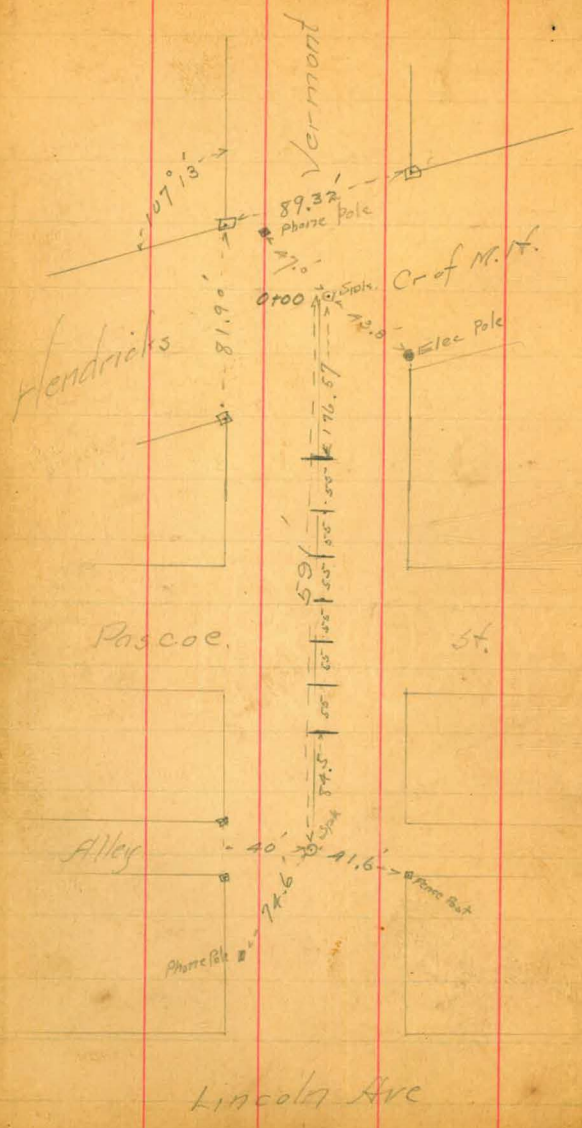
006
40
240

312.77
240.77
35
13
9
10
81

0
1
2
3
4
5
6
7
8
9
10
11
12
13
14
15
16
17
18
19
20
21
22
23
24
25
26
27
28
29
30
31
32
33
34
35
36

Benches

- 291.53 Vermont ^{2nd Univ -} NE, Sp. in New Elec Pole.
285.94 - 100' N of Hendricks W. Side Vermont. Elec Pole -
258.41 NE 1st Univ Summit Pole
280.76 NE 2^d " " Home Pole
277.51 260' N of Univ. & Alley bet 1st & 2^d Home Pole
268.28 300' N of Univ " " " " 1st Home Pole
189.60 NE Alley bet C-D on 26th " "
269.95 N.E. cor Robinson & 1st 7th Jack



Vermont.

Dot Hendricks & Lincoln

0+00 = MH on Hendricks

B.M. 59. + Rod. 270 14-I 288.64 - Rod. Elev 285.94 Grade

* 1+58²⁴ 3.0 285.6 286.34

x + 76⁵⁷ (1) 6.07 282.6

* + 98 POSTED 8.2 280.4

T.P. 0.315 276.505 12.45 276.19 ✓

T.P. 0.14 264.245 12.40 264.105 ✓

* 2+31⁵⁷ (2) 5.30 258.94

T.P. 0.005 251.25 13.00 251.245 ✓

T.P. 0.035 238.620 12.665 238.585 ✓

* 2+86⁵⁷ (3) 6.61 232.0

T.P. 8.97 235.315 11.775 226.545 ✓

* 3+21⁵⁷ (4) 11.51 223.8

T.P. 12.525 247.640 0.20 235.115 ✓

x + 96⁵⁷ (5) 11.07 236.5

T.P. 12.745 260.125 0.26 247.38 ✓

* 4+51⁵⁷ (6) 12.97 272.815 0.28 259.545 ✓

T.P. 12.745 285.485 0.075 272.74 ✓

Higher ground than Centre
151 about Centre

✓ 1
+0.2
10
+0.1
10
E

POSTED

257.8
- 1.1
10
- 0.5
10

- 1.1
10
+ 1.4
10

+ 1.0
10
- 1.0
10

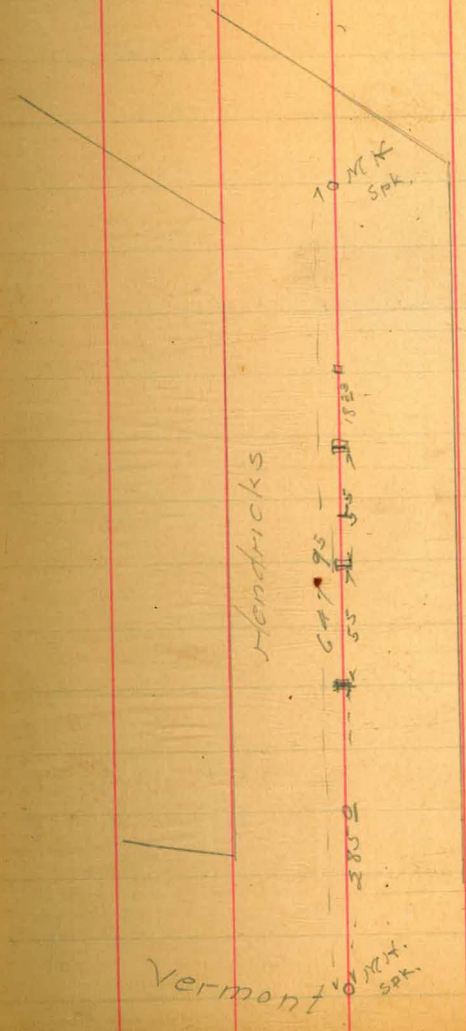
+ 5.2
10
- 1.2
5
+ 1.0
10

- 1.3
10
+ 2.1
10

285.485

5106 ⁵¹	(7)		2.35	283.1	285.26
T.P.	6.15	289.150	2.35	283.135	
		at North end of track	0.55	288.60	
B.M.		Small mark in Stone Pit	3.79	285.36	
check			3.20	285.95	285.94

$\frac{-3.0}{10}$ $\frac{+2.2}{4}$ $\frac{+6.3}{10}$



5/6/07

Hendricks St

0+00 = 1. MH in Vermont

grade

B2M	10.74	296.68		285.94	
	4.34	297.99	303.	293.65	
1+85	(1)		10.99	287.01	287.32
TP	0.825	286.435	12.35	285.61	
3+95	(3)		3.80	282.635	287.73
T.P.	12.5	274.725	12.99	273.445	
3+40	(2)		11.09	263.635	287.56
4+13	(4)			grade	287.86

POSTED

0.40

+ = Higher ground than Centre

N

S

$\frac{+0.8}{10}$

$\frac{+0.4}{10}$

$\frac{-0.7}{10}$

$\frac{0.0}{10}$

$\frac{-0.6}{10}$

$\frac{+0.7}{10}$

POSTED

7/17 Alley bet Pascoe & Lincoln

0+00 = NH on Vermont

13m	7.33	292.69		288.36	
0+68			4.1	288.6	
0+82			6.7	286.0	
0+87	(1)		8.75	283.94	288.95
2+15			2.1	290.6	
1+97	(3)		5.99	286.70	
T.P.	0.48	280.50	12.67	289.82	0.700
T.P.	5.27	273.02	12.50	267.65	
1+42	(3)		5.53	264.19	

POSTED

+ = Higher ground than Centre

5

N

S

$\frac{-2.0}{10}$

$\frac{+1.7}{10}$

$\frac{+2.0}{10}$

$\frac{-1.9}{10}$

POSTED $\frac{+3.7}{10}$

$\frac{-3.8}{10}$

POSTED

5th Hatch
 1917
 University - Washington
 Alley bet 1st - 2nd
 Errory
 at University
 0+00 = Cr. F.t.
 B.m. 0.37 277.88 277.51
 2+76[±] (1) 3.85 274.03 275.0
 4+96[±] (3) 0.95 276.93 276.59
 T.P. 0.43 265.74 12.57 265.31
 3+86[±] (3) 8.16 257.58
 1+41[±] (2) 4.17 261.57
 3+31[±] (2) 12.89 252.85
 3+90 16.2 249.5

VV

≡

$$\frac{-1.5}{10}$$

$$+2.8$$

$$\frac{+2.6}{10}$$

$$\frac{-2.7}{10}$$

$$\frac{-1.2}{10}$$

$$\frac{-1.3}{10}$$

$$\frac{-2.8}{10}$$

$$\frac{-4.0}{10}$$

$$\frac{+3.4}{10}$$

$$\frac{0.0}{10}$$

0 - 1144 hole

5/11/07 Hotel
 Donna Emery
 5+00 = F.E. of Robinson Ave
 Mt. + Albatross
 Wm - Washington

B.M.	3.90	272.13	268.23	Grade
8+17 ^E			2.9	269.2 268.25
8+05 ^E	(8)		7.59	264.24 268.09
T.P.	0.11	259.68	12.56	259.57
T.P.	0.30	247.68	12.30	247.38
7+50 ^E	(9)		6.99	240.7 247.34
7+40			9.5	238.2
7+05	POSTED		14.5	233.2
6+95 ^E	(6)		12.63	235.1 266.60
T.P.	12.75	258.42	2.01	245.67
6+50			7.9	250.5
6+40 ^E	(5)		5.58	252.8 265.86
6+30			2.7	255.7
5+85 ^E	(4)		8.76	249.66 265.11
T.P.	1.07	248.41	11.08	247.34
5+75			2.4	248.0
5+30 ^E	(3)		6.62	241.8 247.87

North

W

E

$\frac{0.0}{10}$

$\frac{0.0}{10}$

$\frac{+1.0}{10}$

$\frac{-0.7}{10}$

POSTED

$\frac{-1.9}{10}$

$\frac{+1.9}{10}$

$\frac{-4.3}{10}$

$\frac{+4.5}{10}$

$\frac{-3.3}{10}$

$\frac{+4.2}{10}$

$\frac{-3.4}{10}$

$\frac{+4.0}{10}$

		248.91			
A+70 ⁴⁵	(3)		150	246.9	263.63
T.P.	12.20	260.00	0.61	247.80	
A+20 ⁵	(6)	542	261.88	0.54	259.46
A+08			2.6	262.3	262.73
A+00			1.0	263.88	262.63
T.P.	7.70	272.12	0.46	264.42	
Com chuda -			389	268.23	268.23

$$\frac{+2.7}{10}$$

$$\frac{+30}{10}$$

$$\frac{-1.2}{10}$$

$$\frac{-2.8}{10}$$

POSTED

0+00 F.T. is 25' S of S Prop. L. Robinson St.

78

5/13/77 Hatch
Dinner
Evening

Alley bet C-D
26th - 27th

Bxm	7.35	198.42		191.07
Bxm	0.26	189.56	8.82	189.60
TP	0.37	177.99	12.24	177.62
Fin L.	0.47	165.67	12.79	165.20
216' E of 26 th			8.40	
+ 28	7.75	161.10	12.32	153.35
+ 35			11.0	
+ 40	POSTED		10.00	
+ 52	(3)		7.24	
+ 64	(4)		5.28	
+ 76	(5)		3.84	

W 107.70
E 156.55
120

1200 160
112 27570
80

9

SW 26th - rd. Hyatt Nozzle
NE 26th - Alley bet C-D Phone Pole -

	N	S
	$\frac{0.0}{5}$	$\frac{0.0}{5}$
POSTED	$\frac{0.0}{5}$	$\frac{0.0}{5}$
	$\frac{+1.1}{5}$	$\frac{0.0}{5}$
	$\frac{-0.5}{5}$	$\frac{0.0}{5}$
	$\frac{-0.3}{5}$	$\frac{0.0}{5}$
	$\frac{0.0}{5}$	$\frac{0.0}{5}$

57 Hatch
 137 Jonnan
 107 Emery

Alley: bet C-D.
 at 28th St.

E 147.6
 W 148.7

1.06	205.49		204.43
6.44	193.41	12.52	192.97
0.23	180.89	12.75	180.66
0.08	168.30	12.67	168.22
1.50	157.02	12.78	155.52
4.74	154.33	7.43	147.59

S

POSTED

0+00 = MH 120 W of Cr. of 28th St. 148.8

+28	(1)	4.97	149.36	148.52
+40	(2)	7.04		
+52	(3)	8.86		
+64	(4)	9.92		
+76	(5)	11.10		
+80		12.6		
+88	(6)	9.40		
2+00	(7)	5.32		

100%

POSTED

$\frac{0.0}{5}$	$\frac{-0.4}{5}$
$\frac{0.0}{5}$	$\frac{-0.3}{5}$
$\frac{+0.1}{5}$	$\frac{-0.4}{5}$
$\frac{+0.3}{5}$	$\frac{-0.7}{5}$
$\frac{+0.5}{5}$	$\frac{-1.6}{5}$
$\frac{-1.6}{5}$	$\frac{+1.3}{5}$
$\frac{-1.7}{5}$	$\frac{+1.0}{5}$

+20 MH. 147.6

B.M. Sub. 25'S 6.06 148.27
 of Sta 0+40.

5/12 C. Hatch
 1/2 J. Johnson
 1/7 Emery.

B-C, 26th - 27th

Bm	11.00	200.60	189.60	
T.P.	3.67	194.68	9.59	191.01
Bm	0.92	184.90	10.70	183.98
0+00 =	Manhole Cr. 26 th St.			180.95
0+44	(1)	3.24	181.66	180.29
0+56	(2)	3.33	179.57	180.01
0+68	(3)	POSTED	6.86	
0+80	(4)		8.83	
0+92	(5)		9.54	
1+04	(6)		9.73	
+16	(7)		7.55	
+28	(8)		4.47	180.93
3+60	Manhole			176.55

170.95
 = 175.85
 5.90

5.40 (360)
 3.00 (360)
 18.00 (360)
 13.00 (360)

Alley bet C-D on 26th NE

Alley bet B-C " " "

N.	6
-0.5	+0.2
5	5
-0.4	+0.2
5	5
0.0	+0.1
5	5
POSTED	POSTED
+0.6	+0.6
6	5
+0.5	-0.1
5	5
+2.2	-1.7
5	5
+2.2	-1.4
5	5
+1.2	-1.5
5	5

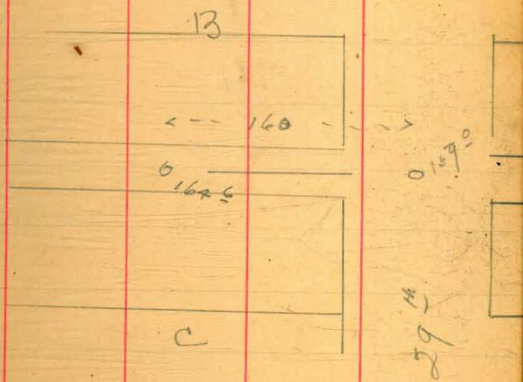
Alley bet B-C
28" - 29"

W 160.60
E 159.0

160

12

POSTED



57 (Match
1/4/23 Dinnon
107 Emery.

Alley bet A-B
27th - 28th

B.M.	7.03	217.29		210.26
	1.62	208.56	10.35	206.94
	1.65	197.72	12.49	196.07
	0.36	185.17	12.61	185.11
B.M.	0.25	178.91	6.81	178.66
	7.10	174.13	11.88	167.53
0+00	Manhole			176.80
+41	(1)		2.76	
+53	(2)		8.21	
+65	(3)		11.50	
+77	(4)		10.74	
+89	(5)		8.81	

18.786

266	1768	420
170	1638	374
96	1309	240
	924	205
	298	620
	42	

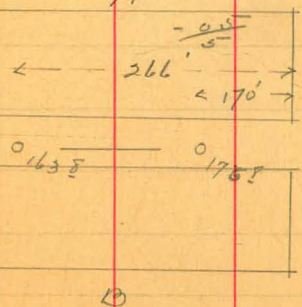
NE Bea & Howard Sph - Phn Pale
SE A-28th Sight mangle -

Sph in Home pale 200' W of 28th - Alley bet A-B

5 14

POSTED

$\frac{+0.2}{5}$	$\frac{-0.2}{5}$
$\frac{-0.3}{5}$	$\frac{+0.5}{5}$
$\frac{0.0}{5}$	$\frac{+0.5}{5}$
$\frac{+0.2}{5}$	$\frac{+0.2}{5}$
$\frac{-0.3}{5}$	$\frac{-0.5}{5}$



28

5/ Satel
157/2/ Down
17 Emory.

Alley - A-B
27th - 28th

B27	3.05	209.99		206.94
	0.24	197.29	12.94	197.05
B28	0.67	185.71	12.25	185.04
mt. W			10.98	174.73
" E	0.66	174.89	11.48	174.23
0+00 = East Mt.				169.0
0+10			4.5	168.90
+22			7.23	168.78
+34			8.52	168.66
+46			5.2	168.54

6 60
61

14

Hyd. Mangle. H-28th

Mail - top of fence post at corner - alley

S N

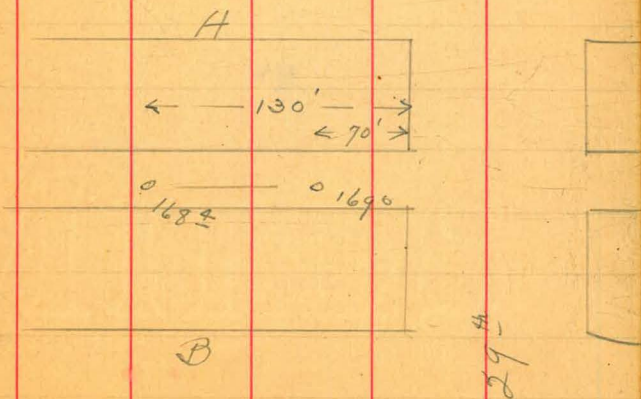
$\frac{-0.1}{5}$

$\frac{+0.4}{5}$

$\frac{0.9}{5}$

$\frac{0.0}{5}$

POSTED



51 Crystal
10/27/20 Parman
10/27/20 Emery

29th St det B-C

334

178.07

174.73

2.54

168.16 12.45 165.62

0+00 = 104 Cr. Heley 8 29

0+25 (1) 8.44 159.72 158.75

0+37 (2) 11.13 158.63

0+49 (3) 13.63 157.53 158.51

0+61 (4) 11.97

0+73 (5) 11.60

0+85 (6) 10.81

0+97 7 7.77 158.39 158.23

PO-3

POSTED

113
125

109
157.5
125

15

F
+1.3
5

+0.9
5

+1.0
5

-0.3
5

-0.6
5

-0.5
5

-1.0
5

W

-1.6
4

-0.5
4

0
4

-0.2
4

+0.5
4

+0.7
4

+0.9
4

POSTED

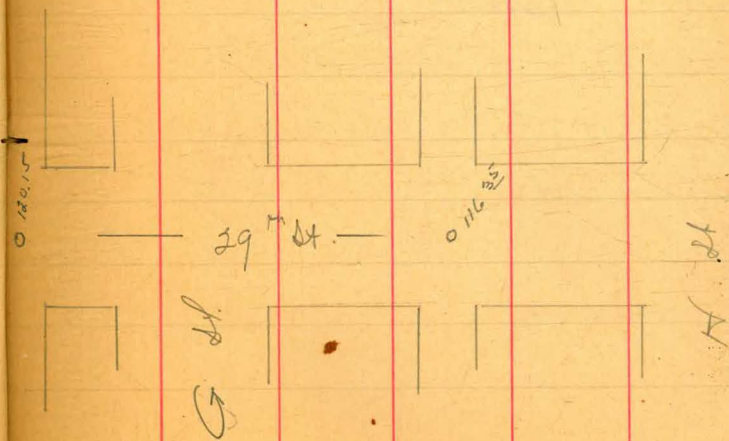
B H

29th St.

159.2

157.5

C H



57 Hatch
177/107 Doman
Emery

29th Lt wt H 2 B-

Bm	703	192.07		185.04
TR	5.68	194.87	2.86	189.21
	0+00	-MCH Cr H St		
0+04	(1)		1.23	193.66 192.98
0+16	(2)		3.58	
0+28	(3)		6.58	
0+40	(4)		11.78	
1+00	(9)		2.28	192.61 192.47
0+98	(8)		5.71	
0+76	(7) 4.55	186.34	11.10	183.79
0+64	(6)		7.34	
0+58			11.6	
0+52	(5)		8.45	

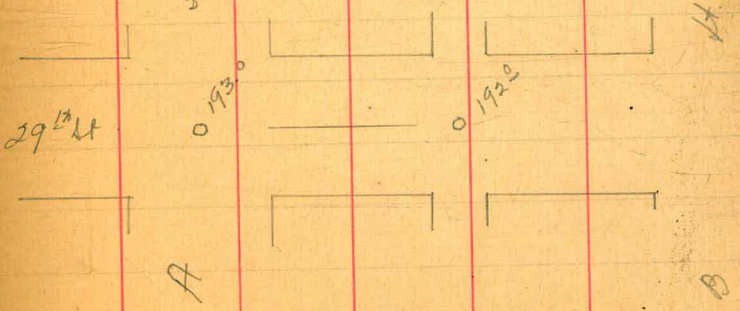
0.526%

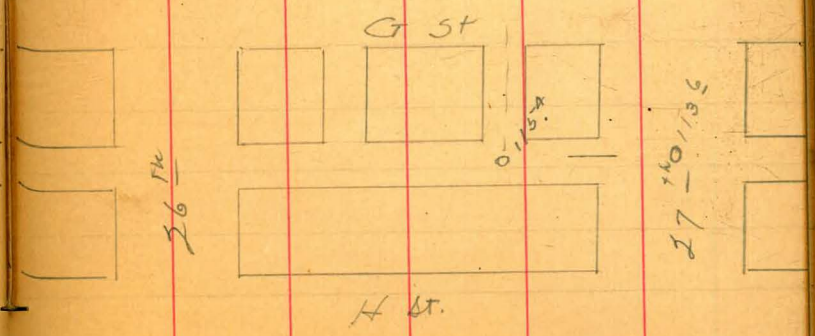
101190
500
330
1128
600

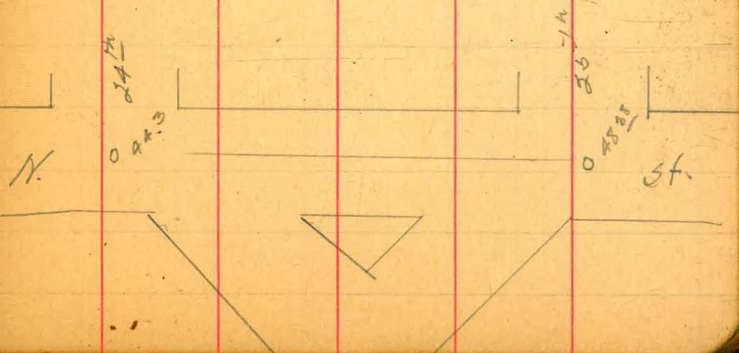
02/052
973 17

W	E
-0.7	+0.3
-0.2	+0.6
-1.0	+0.6
-0.0	+0.5
-0.5	+0.5
-1.0	+0.2
-0.8	0.0
-0.7	-0.5
0.0	+0.6

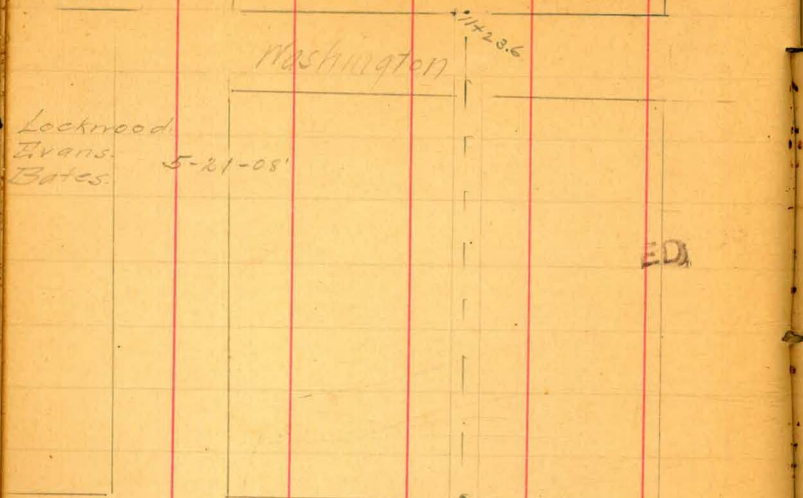
POSTED







Survey line from Robinson to Lewis
in alley bet. 1st & Albatross.



POSTED



Levels on Sewer in Alley bet 1st & 2nd
 0+00 = manhole 25.45 bet Robinson

0+00	4.34	274.29		269.95
0+35.55			6.47	267.6
+50			6.75	269.54
+50			6.46	267.83
1+00			4.74	269.55
1+50			4.50	269.79
2			4.70	269.59
+50			5.90	268.39
3			6.70	267.59
+50			8.60	265.69
T.P.	0.63	262.28	12.64	261.65
4+00			0.65	261.63
+50			1.193	250.35
T.P.	1.42	251.32	12.38	249.90
5+00			10.60	240.72
+50			6.0	245.3
W. line Univ			3.5	247.8

Abolished from Robinson. N.

5-22-01
 Johnson
 Evans
 Baker

POSTED

	10 ft		10 ft	
	18		E.	
-0.3	267.6	3.92	258.36	
10.40	251.9	15.20	247.08	
7.83	243.49	6.8	244.5	
9.1	242.2	2.0	249.3	
7.2	244.1	0.0	251.3	

T.P.	11.90	261.77	14.5	249.87
6+00			6.0	255.8
+15			5.4	256.4
T.P.	2.11	251.00	12.88	248.89
6+50			6.7	243.3
T.P.	2.05	241.46	11.59	239.41
7+00			12.0	229.5
+05			11.4	230.1
T.P.	11.24	252.01	6.9	240.77
7+50			6.6	245.4
T.P.	11.95	263.66	0.30	251.71
T.P.	11.46	274.53	0.59	263.07
8+00			6.7	267.8
+11			2.5	272.0
T.P.	9.24	282.88	0.89	273.64
8+50			8.5	274.4
9			7.6	275.3
+50			6.5	276.4

W.	E.
11.4	250.4 1.35 260.4
10.3	251.5 1.00 260.8
10.0	241.0 4.1 246.9
12.5	229.0 8.9 237.6
11.9	229.6 11.0 230.5
5.9	246.1 7.2 247.8
5.8	268.7 7.5 267.0
2.3	272.2 2.4 272.1

POSTED

	282.88			
10700		5.3	277.6	
+ 50		4.2	278.7	
11		3.1	279.8	
5 line Washington		2.6	280.3	
+ 5		4.5	278.4	
+ 50		4.8	278.1	
Newb Wash		4.7	278.2	
N Line "		4.5	278.4	
" " "		2.6	280.3	
12		1.9	281.0	
+ 50		2.2	280.7	
13		1.3	281.6	
+ 50		0.5	282.4	
T.P.	6.88	288.49	1.27	281.61
14		5.5	283.0	
+ 50		4.9	283.6	
15		4.4	284.1	

POSTED

288.49

+50

4.1 280.4

16

3.7 284.8

+50

3.2 285.3

17

3.0 285.5

+50

2.7 285.8

18

2.1 286.4

+23.3

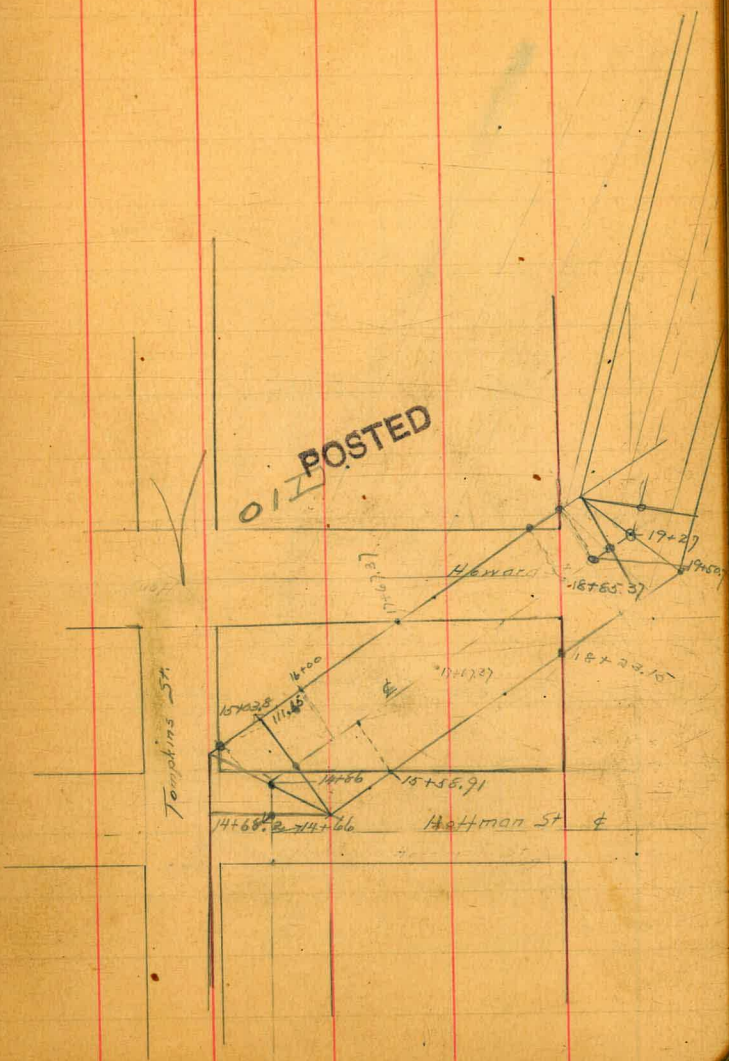
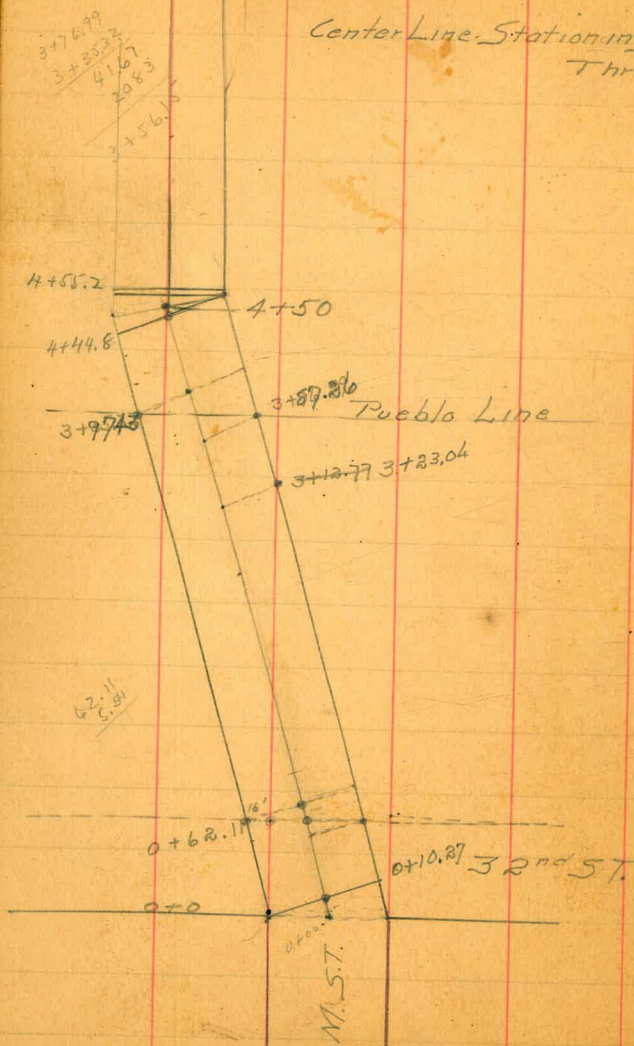
S. line Lewis

2.6 285.9

POSTED

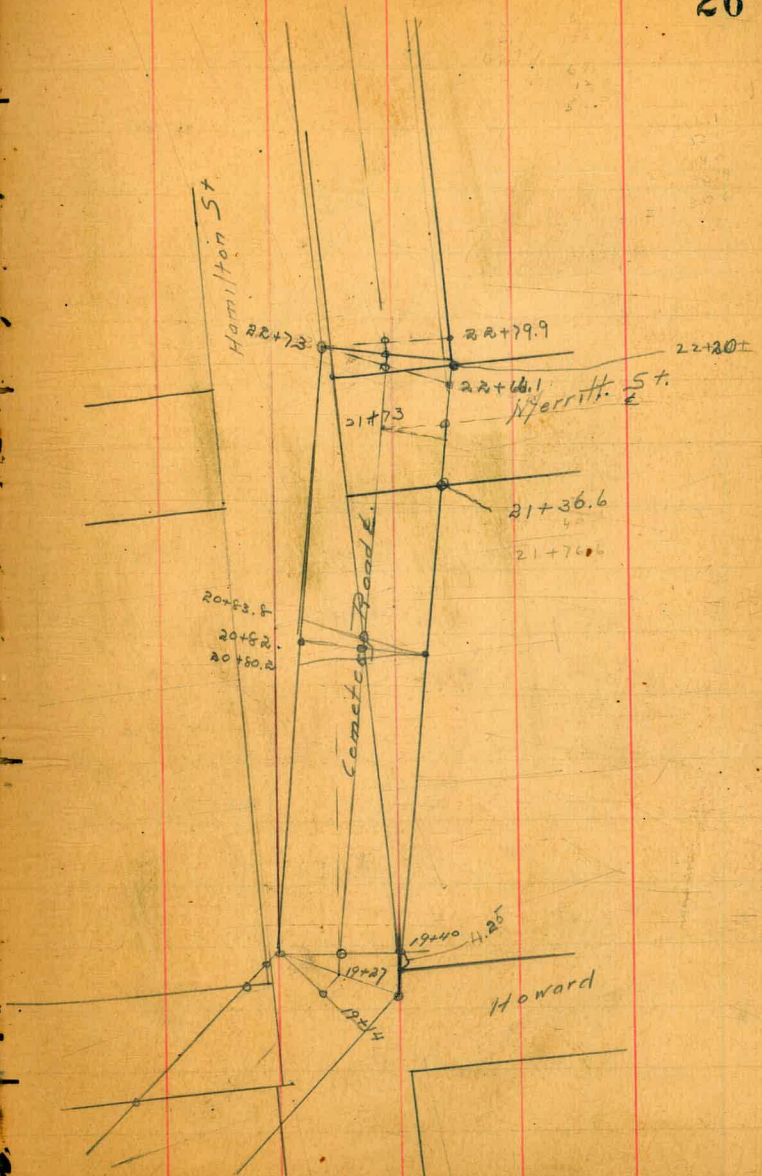
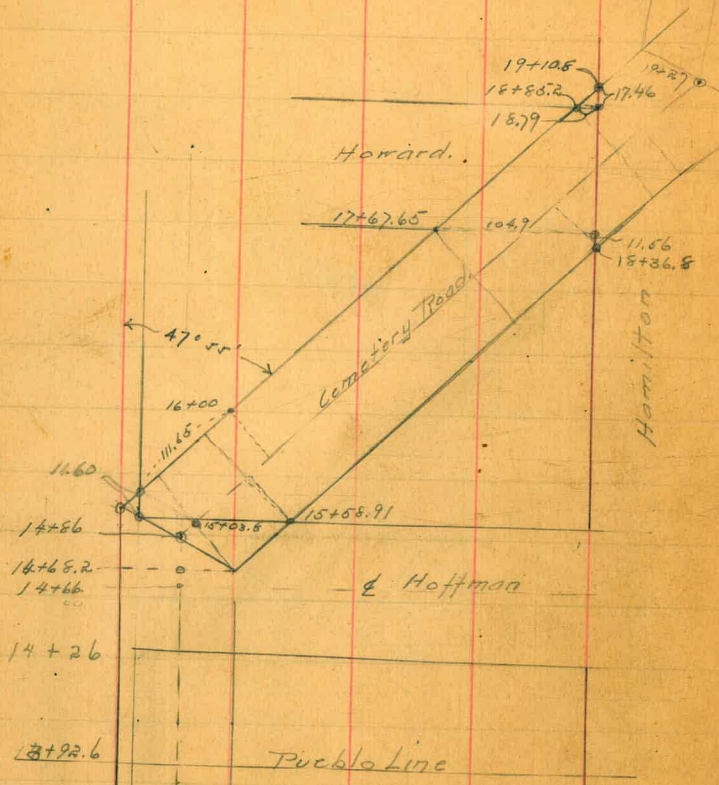
X section Cemetery Road

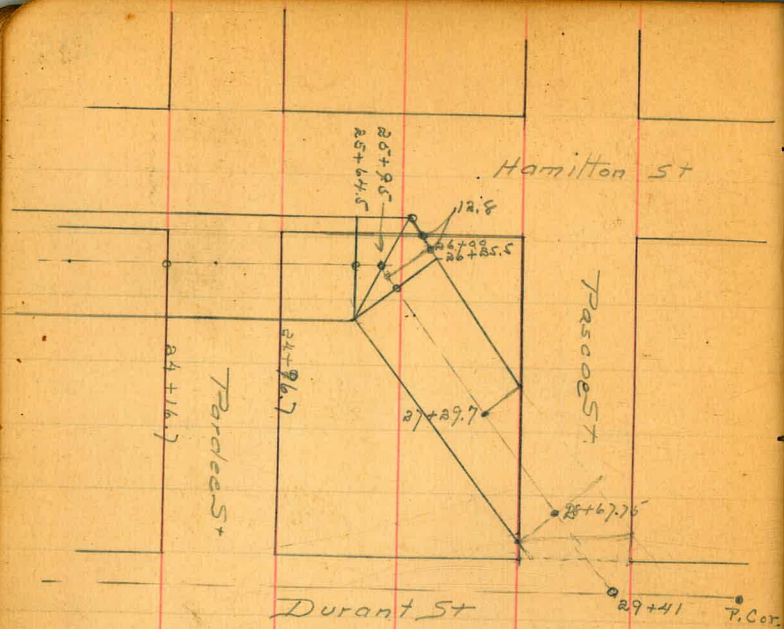
Center Line Stationing
Throughout:



15+50.2
 85.6
 19+10.8

15+23.15
 13.66
 36.81





N.W. Cor. Brass Plug and return
26th + N. 63.923.

S.W. Cor 30th + N. 75.00

				63.923
T.P.	4.05	67.77	2.33	65.64
T.P.	8.51	74.15	0.71	73.44
T.P.	3.56	77.00	5.00	72.00
T.P.	6.63	78.63	2.29	76.34
T.P.	4.43	80.77	9.39	71.38
B.M.	0.59	71.97	-3.15	68.82
T.P.			-12.20	59.77
T.P.	0.66	60.43	12.53	47.90
T.P.	0.28	48.18	11.71	36.47
T.P.	0.49	36.96	10.15	26.81
B.M.	4.63	31.44	-3.63	27.81
			3.90	27.54
	5.98	33.52	0.17	33.35
	12.43	45.78	0.25	45.53

Spike in Talley Pole
S.W. Cor. 32nd
+ N.

Iron Bolt, N.E.
Cor. of Bridge
E. End of Dine

Rock at
Sta. 22+00

				45.53
T.P.	12.87	57.80	0.60	57.20
T.P.	12.83	69.43	0.27	69.16
T.P.	12.02	81.16	0.10	81.06
TP	12.73	93.81	0.25	93.56
B.M.	9.55	103.11	5.99	97.12
T.P.			4.06	99.55
	5.47	102.52	6.05	96.47
	11.72	108.19	0.48	107.71
B.M.	12.84	120.55	12.42	108.13
	0.		0.74	119.81
	10.09	129.90	10.05	119.85

Spike in Tel
Pole N.E. Co.
Durant & Tall

Spike in Tel
Tel. Pole No.
Main Entrance
to Cemetery

Xsec of Cemetery Road-				
32nd St to City Limits.			68.82	
W.P.L. of 32nd St = 0+00 E stationing				
H.I.	H.I.			
N.P.L.	7.41	76.23	6.60	69.6
30' N of E			7.00	
18' N "			9.30	
E			9.20	67.0
20' S of E			9.30	
33' " "			7.50	
S.P.L.			8.20	68.0
3' E of W.P.L. of 32nd				
S.P.L.			2.80	73.4
38' S of E			4.80	
20' " "			7.50	
17' " "			9.40	
E			9.10	67.1
16' N of E			9.50	
21' " "			4.40	
N.P.L.			1.80	74.4

POSTED

0 + 10.27 (see sketch p. 25)

N.P.L.	<u>76.23</u>	1.80	74.4
33' N of ♀		2.40	
30' " " "		4.20	
26' " " "		2.40	
22' " " "		4.00	
20' " " "		9.20	
♀		9.30	67.9
14' S of ♀		9.40	
16' " " "		3.50	
S.P.L.		3.00	73.2
0+62.11 W.P.L. of 32 nd .			
S.P.L.		1.90	74.3
16' N		2.70	
20' N		10.30	
23' N		11.50	
26' N.		10.50	
♀		10.90	65.3

11' N of ♀

11' N of ♀	<u>76.23</u>	10.80	65.4x
14 "		11.60	
18 "		10.10	
24 "		1.80	
28		1.30	
N.P.L.		1.30	74.9
0+62.11 see sketch p. 25			
N.P.L.		1.30	74.9
15' S		1.80	
21		11.90	
27		11.00	
♀		11.20	65.0
11' S of ♀		11.10	Wt
17 " "		12.00	
19' " "		10.50	
23		2.60	
S.P.L.		1.90	74.3

	1+00			
T.P.	1+00	<u>76.23</u>	12.88	63.35
S.P.L.		<u>76.23</u>	1.90	74.3
14' N			1.90	
27' N	0.94	<u>64.29</u>	1.60	
30' "			1.10	
☐			1.20	68.1
15' N of ☐			1.60	
25' N of ☐		<u>76.23</u>	2.00	
N.P.L.			1.90	74.3
	1+50			
S.P.L.		<u>76.23</u>	2.50	73.7
12' N			2.70	
26' N.		<u>64.29</u>	4.40	
☐			4.40	59.9

	12+00			
14' " "		<u>64.29</u>	5.20	
25' " "		<u>76.23</u>	5.70	
N.P.L.			8.30	67.9
	2+00			
S.P.L.		<u>76.23</u>	2.90	73.3
14' N			3.20	
24' "			7.20	
26'			8.70	
29'			7.30	
☐			7.00	69.2
9' N of ☐			7.40	
20' N of ☐		<u>76.23</u>	15.30	
33' N of ☐			19.70	
N.P.L.			18.20	58.0
			7.20	
S.P.L.				

2+50

S.P.L.	<u>76.23</u>	290	73.3
8' N		6.50	
25' N	<u>64.29</u>	11.50	
27' "		10.90	
⊕		10.80	53.5
+13'		10.90	
+15		14.50	
+19		9.80	
+23		11.40	
+36		5.00	
N.P.L.		0.00	59.3

3+00

S.P.L.	<u>76.23</u>	290	73.3
14' N		10.00	
25' N	<u>64.29</u>	14.70	
27'		13.90	
⊕		13.20	51.0

3+00 Cont'd

13' Not ⊕	<u>64.29</u>	12.80	
16' " " "		14.70	
27'		10.30	
N.P.L.		9.90	54.4

3+50

N.P.L.		0.30	64.0
+19		9.80	
+22		12.90	
⊕		16.60	47.7
+16'		16.50	
+20'		17.60	
+27		18.00	
+31		15.20	
+37		14.40	
S.P.L.		10.90	53.4
3+70 ⊕		4.20	60.1 = R.R. Track
3+80 N.L.		5.00	59.3
3+80 S.L.		3.40	60.9

	4+00		
T.P.	64.29	12.79	51.50
	0.36	<u>51.86</u>	
N.P.L.		+2.50	54.4
+8		+3.00	
+12		+3.50	
+17'		6.00	
ϕ		6.50	45.4
S.P.L.		5.40	46.5
	4+25.00		
S.P.L.		7.90	44.0
ϕ		6.30	43.6
+13		6.30	
+19		9.50	
+21		12.70	
+23		9.20	
N.P.L.		9.60	42.3
T.P.		12.14	39.72

	4-44.76	see sketch P. 25.	
S.P.L.	<u>51.86</u>	9.90	42.0
ϕ		9.10	42.8
+15		9.30	
+20		10.70	
+23		16.60	
+27		11.00	
N.P.L.		11.30	40.6
	4+50		
N.P.L.	0.78	<u>40.50</u>	7.40
+1		9.20	
+3		9.80	
+6		9.20	
+9		5.30	
+24.		<u>51.86</u>	10.10
ϕ		9.80	42.1
S.P.L.		9.90	42.0

-4+55, RH-

S.P.L.	<u>51.86</u>	9.90	42.0
¢		10.40	41.5
+16		11.50	
N.P.L.	<u>40.50</u>	12.20	28.3

5+00

N.P.L.	<u>40.50</u>	12.80	27.7
+21	<u>51.86</u>	13.20	
¢		12.20	39.3
+8		11.50	
+29	<u>40.50</u>	11.30	
S.P.L.		12.40	28.1

5+50

S.P.L.	<u>40.50</u>	14.90	25.6
+17		14.00	
+35		3.00	
¢		2.90	37.6
+19		3.40	
N.P.L.		16.50	25.0

6+00

N.P.L.		15.60	24.9
+23		5.50	
¢		5.40	35.1
+4		5.60	
+26		16.30	
S.P.L.		16.70	23.8

40.50
27.00
13.50

6+50

S.P.L.	40.50	17.30	23.2
+19		16.60	
+37		7.20	
£		7.30	33.2
+25		6.90	
N.P.L.		13.80	26.7

7+00

N.P.L.		16.00	25.5
+8		9.50	
£		9.20	31.3
+4		9.30	
+20		16.30	
S.P.L.		16.60	23.9
T.1			

7+50

S.P.L.	<u>40.50</u>	17.90	22.6
18'		17.30	
+36		10.20	
£		10.00	30.5
+30		10.80	
N.P.L.		15.80	24.7

8+00

T.P.	1	10.83	29.67
N.P.L.	1.88	<u>31.55</u>	6.80
+8		2.40	
£		1.80	29.8
+6		2.10	
+9		7.30	
S.P.L.		7.60	24.0

8+50

S.P.L.	<u>31.55</u>	7.80	23.8
+22		7.20	
+34		3.80	
Φ		3.60	27.8
+36		4.20	
N.P.L.		6.90	24.7

9+00

N.P.L.		5.80	25.8
+2		5.00	
Φ		4.80	26.8
+9		4.90	
+14		6.60	
S.P.L.		7.70	23.9

9+50

S.P.L.	<u>31.55</u>	7.60	24.0
+22		6.50	
+31		4.80	
Φ		4.90	26.7
+20		5.00	
N.P.L.		6.20	25.4

10+00

N.P.L.		6.60	25.0
+25		4.90	
Φ		4.90	26.7
+10		5.20	
+20		7.70	
S.P.L.		7.90	23.7

10+50

S.P.L.	<u>31.55</u>	7.90	23.7
+24		6.80	
+29		5.00	
♀		5.00	26.6
+17		4.90	
+35		6.00	
N.P.L.		7.30	24.3

11+00

M.P.L.		7.10	24.5
+9		5.70	
+13		7.00	
+20		4.90	
♀		4.80	26.5
+8		4.80	
+12		6.70	
S.P.L.		7.30	24.3

11+50

S.P.L.	<u>31.55</u>	7.70	23.9
+26		7.30	
+30		5.10	
♀		4.90	26.7
+16		4.80	
+22		8.20	
N.P.L.		8.60	23.0

12+00

N.P.L.		7.70	23.9
+11		8.60	
+17		4.80	
♀		4.90	26.7
+10		5.10	
+16		7.20	
S.P.L.		8.20	23.4

12+50

S.P.L.	<u>31.55</u>	10.00	21.6
+20		8.30	
+32		3.80	
¢		4.10	27.5
+13		4.30	
+24		7.00	
+35		11.50	
N.P.L.		12.30	19.3

12+64 = W. End of Bridge = 20' wide

N.P.L.		13.50	18.1
		1	
+27		14.50	Under Bridge
+30		4.10	27.45 Top of Bridge
¢		3.80	27.8
+10		4.10	" " "
+13		7.30	Creek Bottom
+17		13.00	

12+64 Cont'd

+21	<u>31.55</u>	7.70	
S.P.L.		8.30	23.3
¢ of Bridge = ¢ of Road 13+01.5 = ¢ of Bridge			
S.P.L.		14.30	17.3
+30		13.60	Creek Bottom
"		4.40	27.15 Top of Bridge
¢		4.20	27.4
+10		4.40	" " "
+13		13.10	Creek Bottom
N.P.L.		12.30	19.3
13+39 = E End of Bridge			
N.P.L.		6.60	25.0
+26		7.00	
+30		5.00	Bank
"		4.00	Top of Bridge
¢		3.50	27.8
+10		4.10	" " "

13+39 Cont'd

+10	<u>31.55</u>	8.80	Bank
S.P.L.		12.10	19.5
	13+50		
T.P.		3.73	^{27.81} 27.82 B.M.
S.P.L.	4.60	<u>32.41</u>	12.50 19.9
+35		5.70	
£		5.20	27.2
+15		5.30	
N.P.L.		7.60	24.8
	14+00		
N.P.L.		11.10	21.3
+16		7.50	
+22		5.70	
£		5.80	26.6
+13		6.00	
+20		8.10	
+32		8.20	
S.P.L.		9.50	22.9

14+26 = W. Line of Hoffman

S.P.L.	<u>32.41</u>	8.30	24.1
+24		7.80	
+30		5.90	
£		6.00	26.4
+16		6.10	
+19		7.30	
N.P.L.		7.50	24.9
	14+68.2		see sketch page 26
N.P.L.		5.60	26.8
+20		6.10	
*£		5.80	26.6
+22		6.50	
+25		7.20	
S.P.L.		7.50	24.9

14+86 = Δ Angle point.

S.P.L.	<u>32.41</u>	7.50	24.9
¢		5.60	26.8
+12		5.60	
+18		1.70	
+31	42.50	10.30	(33.47)
N.P.L.	12.61	<u>42.50</u>	7.40
			35.1

S.E. Cor of Hoffman & Tompkins

42.50 7.90

S.P.L. of Tompkins 11. E of E.P.L. of Hoffman

42.50 5.50

15+03.8

N.P.L.	<u>42.50</u>	5.00	37.5
+2		5.50	
+23		10.90	
+25	<u>32.41</u>	4.90	
¢		5.30	27.1
S.P.L.		7.50	24.9

15+58.9

S.P.L.	<u>32.41</u>	5.60	26.8
+13		5.50	
+17		4.40	
+21		5.50	
¢		5.20	27.2
+15		4.50	
+20	<u>42.50</u>	10.80	
N.P.L.		4.40	38.1

16+00

N.P.L.		4.10	38.4
+19		9.30	
+25	<u>32.41</u>	4.30	
¢		4.90	27.5
+15		5.20	
+17		4.00	
S.P.L.		4.60	27.8

16+50

S.P.L.	<u>32.41</u>	4.10	28.3
+ 25		2.70	
+ 27		4.80	
⊘		4.50	27.9
+ 17		4.20	
+ 24	<u>42.50</u>	9.10	
N.P.L.		7.90	34.6

17+00

N.P.L.		11.00	31.5
+ 13		11.60	
+ 23	<u>32.41</u>	3.80	
⊘		4.10	28.3
+ 14		4.30	
+ 16		3.40	
S.P.L.		5.60	26.8

17+50

S.P.L.	<u>32.41</u>	8.00	24.4
+ 10		5.80	
+ 21		5.00	
+ 26		3.60	
⊘		3.90	28.5
+ 16		3.60	
N.P.L.	<u>37.91</u>	15.10	22.8

17+67.65

T.T.		3.52	28.89
N.P.L.	9.02	<u>37.91</u>	16.50
+ 12		15.30	
+ 25		9.00	
⊘		9.20	28.7
+ 14		9.30	
+ 22		11.80	
+ 29		13.70	
+ 30		13.60	
S.P.L.		14.90	23.0

on line from 17+67.65 on N. to N.W. Cor
 [see sketch p. 26] of Howard & Hamilton

N.P.L.	<u>37.91</u>	16.50	21.4
+14		17.30	
+15		17.90	
+30		16.50	
+30		10.60	
+35		8.90	
+74		9.50	
+87		14.70	
N.W. Cor -		14.40	23.5

17+84 = Ctr of Creek

S.P.L.		19.50	18.4
+25		19.00	
+25		9.00	28.91
ϕ		9.10	28.8
+15		9.10	
+15		18.90	
N.P.L.		17.90	20.0

18+00

N.P.L.	<u>37.91</u>	14.00	23.9
+13		13.40	
+26		8.40	
ϕ		9.20	28.7
+14		9.10	
+24		15.30	
S.P.L.		16.30	21.6

18+36.8

S.P.L.		14.00	23.9
+18		13.70	
+27		9.40	
ϕ		9.40	28.5
+15		9.00	
+24		13.00	
N.P.L.		13.00	24.9

18+85.2. [see sketch]

N.P.L.	<u>37.91</u>	12.20	25.7
+16		12.00	
+18		11.20	
+25		10.70	
£30		9.40	
£		9.20	28.7
+12		9.50	
+26		11.70	
+29		13.00	
S.P.L.		13.70	24.2
N.P.L. of Hamilton			
11.66' Wat		14.00	23.9
N.L. of Howard		14.40	
+12		13.60	
+24		9.60	
£		9.30	28.6
+18		9.40	

N.P.L. of Ham Cont'd

+26	<u>37.91</u>	<u>11.10</u>	
N.L. of Howard		11.40	
12.46 E. of Cor.		11.70	26.2
- 19+14 -			
S.P.L.		12.50	25.4
+20		12.20	
+26		9.50	
£		8.90	29.0
+15		8.70	
+20		10.60	
N.P.L.		11.50	26.4
19+27 = L Point			
N.P.L.		11.50	26.4
+22		10.00	
+26		8.70	
£		8.80	29.1
+11		9.40	
+15		11.00	
S.P.L.		10.80	27.1

POSTED

See Book 408 page 51

S.W. Cor 37.91 10.20 27.7
 19+40

S.P.L. 9.90 28.0

+25 10.00

£ 8.30 29.6

+18 8.50

+20 9.60

N.P.L. 11.70 26.2

20+00

S.P.L. +1.00 36.9

+26 3.30

+29 4.60

£ 5.20 32.7

+19 5.60

+27 9.60

N.P.L. 10.80 27.1

[T.P. 11.79 48.91 0.07 48.84]

Hamilton
 toward

20+50

N.P.L. 37.91 6.40 31.5

+9 2.30

£ 2.10 35.8

+5 2.20

T.P. 0.79 37.12
 48.24

+15 12.61 61.45 14.70

S.P.L. 7.30 44.2

T.P. 3.22 58.23

20+80.2 see sketch

S.P.L. 11.16 69.39 6.00 63.4

+15 10.20

+23 12.10

+26 13.50

+37 10.86 47.98 9.90

+38 16.70

£ 10.00 38.0

+35 10.20

N.P.L. 13.90 34.1

20+82 = 1 pt.

N.P.L.	47.98	13.90	34.1
+7		10.20	57.5
4		9.80	38.2
+1		10.00	
+2		10.60	
+4		9.70	
+14	69.39	13.20	
+32		7.60	

S.P.L. 5.50 63.9

20+83.8

S.P.L.		5.20	64.2
+9		7.70	
+26			
+26		12.70	
+27	47.98	9.60	
+28		10.40	
+39		9.70	

20+83.8 Cont'd.

2	47.98	9.60	
+34		10.40	
N.P.L.		14.90	43.1
	21+00		[37.12]
N.P.L.	12.23	49.35	18.30
+15		10.80	
4		9.80	39.6
+2		9.90	
+3		10.70	
+15	69.39	13.20	
S.P.L.		5.90	63.5

21+50

S.P.L.

69.39 10.20 59.2

+20

14.90

+28

49.35 6.70

Φ

6.80

+13

7.50

+21

10.60

N.P.L.

20.80

22+00

N.P.L.

18.50

+27

5.10

Φ

4.10

+12

3.90

+15

4.00

B.M.

3.85

45.53
45.50

✓

+20

69.39 15.30

S.P.L.

8.50

22+50

S.P.L.

4.40

+24

13.80

+27

49.35 1.00

Φ

1.20

+18

1.60

+16

3.50

N.P.L.

15.80

13.2
2
3
4
22+66.1

N.P.L.	49.35	13.30	36.00
+ 25		1.00	
£		0.20	
+ 7		0.00	
+ 9		0.40	
+ 11		0.00	
T.T.		0.15	49.20
	69.39		
+ 13		11.70	
S.P.L.		1.40	
	22+73		
S.P.L.	80.14	9.50	
+ 27	69.39	11.10	
T.T.		1.86	67.53
	18.61	80.14	

22+73 Contin

+ 30	11.22	60.42	10.80
+ 33			11.00
+ 34			10.60
£			10.80
+ 17			11.80
N.P.L.			36.00
		22+79.90	
N.P.L.			36.00
+ 22		60.42	11.40
£			10.40
			50.0
+ 5			10.10
+ 6			10.50
+ 10			10.50
		80.14	8
+ 12			21.40
S.P.L.			8.00
			72.1

11.1
1002
203

1005
10.5

23+00

S.P.L

80.14

7.00

78.1

+ 38

19.50

+ 29

60.42

9.20

+ 32

8.90

⊘

9.20

51.2

+ 14

9.50

N.P.L

23.50

36.9

23+50

N.P.L

20.30

40.1

+ 23

7.60

⊘

6.10

54.3

+ 9

5.90

80.14

+ 12

15.90

S.P.L

80.14

3.20

76.9

24+00

S.P.L

2.60

77.5

+ 10

5.50

+ 25

11.20

+ 29

60.42

3.40

+ 32

3.10

⊘

3.00

57.4

+ 14

3.70

N.P.L

17.60

42.8

24+16.70

W. L. in -e Pardoe

S.P.L

0.90

59.5

79.2 better

+ 6

2.90

+ 25

11.40

24+50

N.P.L.	<u>60.42</u>	17.00	43.4
+27		1.50	
£		0.00	60.4
+13		10.40	
+15		0.30	
+16		0.00	
+22	<u>80.14</u>	10.70	
+28	<u>80.14</u>	6.10	
S.P.L.	<u>89.13</u>	9.70	79.4
T.T.		1.92	78.22

25+50 (R4196.7) = F.P.L. (P. 196)

S.P.L.	10.91	<u>89.13</u>	6.50	82.3
+6			9.00	
+20			15.10	
+24		<u>72.53</u>	9.40	
+28			8.80	
£			9.40	63.1
+13		72.53	9.90	
N.P.L.		<u>60.42</u>	10.40	50.0

25+50

T.T.		<u>60.42</u>	0.24	60.18	
N.P.L.	72.53	<u>60.42</u>	72.53	2.60	57.8
+17	12.35	<u>72.53</u>		6.80	
£				6.10	66.4
+6				5.90	
+8				6.20	
+12		<u>89.13</u>		12.70	
+27				4.80	
S.P.L.				1.80	87.3

25+64.16 see sketch p27

S.P.L.		<u>89.13</u>	2.90	86.2	
+15			5.50		
+30			11.00		
+34		<u>72.53</u>	5.50		
£				5.20	67.3
+26			6.00		
N.P.L.			12.00	60.5	

25+94.66

N.P.L.	<u>72.53</u>	13.50	59.0
+27		3.70	
£		3.00	69.5
+14		2.80	
+15		3.60	
+17		3.40	
+20	<u>89.13</u>	9.60	
+33		5.60	
S.P.L.		2.90	86.2
	2.6+25.16		
S.P.L.		2.90	86.2
+16		5.50	
+29		9.60	
+35	<u>72.50</u>	1.90	
+38		1.20	

26+25.5 cont

49

£	<u>72.53</u>	1.00	71.5	
+20		0.50		
+25		1.50		
N.P.L.		9.10	63.4	
	26+50			
T.P.		0.51	72.02	
N.P.L.	9.48	<u>81.50</u>	16.00	65.5
+13		8.40		
£		8.20	73.3	
+4		8.40		
+5		10.00		
+7		9.89		
+8		9.10		
+14	<u>97.67</u>	15.00		
S.P.L.		10.20	87.5	
T.P.		10.15	87.52	Top of Blk Sta 26+50
	165	89.17		

	27+00		
S.P.L.	<u>97.67</u>	11.70	86.0
+15		15.30	
+17		16.20	
+22		18.50	
+27	<u>51.50</u>	5.60	
+33		5.00	
⊕		5.10	76.4
+15		5.80	
N.P.L.		15.60	67.9

	27+29.70		
N.P.L.		14.00	67.5
+27		3.80	
⊕		3.80	77.7
+10		3.70	
+16		4.20	
+17	<u>97.67</u>	18.00	
+26		15.70	

+25	<u>97.67</u>	14.10	
S.P.L.		12.00	85.7
on Line from 27+29.70 on N to N.W Cor ^{Durgan + Pasco.}			
N.P.L.	81.50	14.00	67.5
+22		8.40	
+43		1.20	
+82	93.54	11.50	
+83		12.700	
+91		7+00	
REF. 25+67.25 on S	97.67	1.90	95.8

	27+50		
N.P.L.	81.50	11.80	69.7
+26		2.70	
⊕		2.70	78.8
+12		2.40	
+16		3.00	

	27+50	cont'd	
+17	<u>81.50</u>	3.80	
+20	<u>97.67</u>	16.60	
+25		15.50	
+30		13.00	
S.P.L.		10.90	86.8
	28+00		
T.P.	<u>81.50</u>	0.15	81.35
S.P.L.	<u>97.67</u>	7.30	90.4
+08		7.10	
+16		12.30	
+26		13.20	
+31		13.30	
+32		12.00	
+36		11.40	
☒		11.60	86.1
+21		11.40	
+32		13.00	
N.P.L.	<u>81.50</u>	7.00	74.5

	28+50		
N.P.L.	<u>81.50</u>	2.50	79.0
+15	<u>93.54</u>	8.30	85.2
☒		8.20	87.3 x
+2		8.40	
+5	<u>97.67</u>	7.80	
S.P.L.		3.70	94.0
	29+00		
S.P.L.	<u>97.67</u>	2.80	94.9
+13		4.00	
+17		4.00	
+34		7.50	
+36	<u>93.54</u>	4.80	
☒		4.80	88.7
+25		5.40	
N.P.L.		8.70	84.8

on N.L. of Durant f. E.L. to W.L. of Pasco

E.L.		93.54	5.20	
+3			5.20	
+8			3.70	
⊘			4.10	
+3			4.30	
+4			4.50	
+6			3.50	
+12			1.60	
T.P.			0.22	93.32
N.L.	4.35	97.67	1.10	
W.L.				94.12
—	9.50	103.62	—	

0+00 - 100'

N.P.L.	103.62	12.60
+10		12.50
+12		11.40
S.P.L.		9.80

0+00 - 50'

S.P.L.		7.60
+2		8.60
+11		10.00
+23		10.70
N.P.L.		10.10

0+00 = Pueblo Line

N.P.L.		6.30
+7		6.70
+10		8.20
⊘		7.90
+37		7.80
S.P.L.		6.50

	0+50	
S.P.L.	103.62	5.30
+2		6.00
♀		6.10
+10		6.40
+15		4.80
N.P.L.		4.40
	1+00	'
N.P.L.		4.40
+8		4.60
+10		5.80
♀		5.00
+15		5.10
+17		5.40
S.P.L.		4.20

	1+50	
S.P.L.		3.60
+2		4.60
♀		4.60
+10		5.00
+12		4.00
N.P.L.		4.20
	2+00	
N.P.L.		4.80
+8		5.10
+9		5.50
♀		5.00
+15		5.00
+18		5.00
S.P.L.		4.30

	2+50	
S.P.L.	103.62	4.70
+2		5.40
⊘		5.00
+6		5.20
+9		5.80
+13		4.70
N.P.L.		4.80
	3+00	
N.P.L.		5.60
+11		5.10
+12		5.60
⊘		5.10
+16		5.10
+18		5.50
S.P.L.		5.10

	3+50	
S.P.L.	103.62	5.40
+1		5.70
⊘		5.40
+9		5.90
N.P.L.		8.40
	4+00	
N.P.L.		7.40
+16		4.90
⊘		5.00
S.P.L.		4.90
	4+50	
S.P.L.		4.50
⊘		4.80
+4		4.80
+10		5.70
N.P.L.		6.40

	5700		
N.P.L.	103.62	5.70	
+5		6.20	
+11		4.60	
Φ		4.50	
+19		4.20	
S.P.L.		3.40	
	5750		
S.P.L.		4.40	
Φ		4.60	
+4		4.60	
+10		5.10	
N.P.L.		5.70	
T.P.		4.53	99.09
	3.11	102.20	

	6700	
N.P.L.	102.20	3.90
+8		3.30
+10		3.90
+15		3.40
Φ		3.40
+18		3.20
S.P.L.		2.60
	6750	
S.P.L.		1.80
+5		3.00
Φ		3.20
+10		3.20
+11		2.00
N.P.L.		2.20

POSTED

	7+00	
N.P.L.	102.20	2.40
+8		2.10
+12		3.40
+15		3.10
⊕		3.10
+15		3.00
+17		2.10
S.P.L.		2.10

	7+50	
S.P.L.		+ 1.40
+3		+0.50
+6		2.80
⊕		3.10
N.P.L.		2.80

	8+00	
N.P.L.	102.20	4.30
+10		4.00
+14		4.40
⊕		4.00
+15		4.10
+16		4.20
S.P.L.		3.40

	8+50	
S.P.L.		5.70
+2		5.20
+7		4.60
⊕		4.70
+10		4.50
+16		7.90
N.P.L.		7.60

	9+00	
N.P.L.	102.20	5.30
+51		9.10
+12		4.80
⊕		4.90
+17		5.10
S.P.L.		6.50

	9+50	
S.P.L.		5.00
+3		4.30
⊕		4.70
+8		4.80
+12		7.30
N.P.L.		7.30

	10+00	
N.P.L.	102.20	6.90
+7		6.60
+12		5.00
⊕		7.80
+18		4.50
S.P.L.		4.00

	10+50	
S.P.L.		4.50
⊕		4.90
+10		5.30
N.P.L.		8.00

	11+00	
N.P.L.		7.70
+12		5.40
⊕		5.50
+18		5.30
S.P.L.		5.20

11+50

S.P.L.	102.20	5.50
¢		5.50
+5		5.60
N.P.L.		7.20

12+00

N.P.L.		7.30
+15		6.00
¢		6.00
N.P.L.		5.90

12+50

N.P.L.		7.80
+1		7.10
+3		5.90
¢		5.90
+6		6.60
+12		5.70
N.P.L.		9.30

13+00

TP	102.20	5.17	97.03
N.P.L.	11.06	108.09	15.30
+7		14.90	
+13		12.00	
+17		10.90	
¢		10.90	
+15		10.90	
S.P.L.		12.00	

13+50

S.P.L.		9.90
+5		9.40
¢		7.80
+8		10.50
+14		13.50
N.P.L.		14.30

	14+00	
N.P.L	108.09	11.70
+5		11.30
+15		8.40
ϕ		8.10
+18		8.00
S.P.L		8.50

	14+50	
S.P.L		7.80
+3		6.80
ϕ		6.60
+8		7.00
+13		9.50
N.P.L		9.50

	15+00	
N.P.L	108.09	6.80
+8		6.80
+15		4.60
ϕ		4.70
+12		4.20
S.P.L		4.50

	15+50				
S.P.L		0.70			
ϕ		1.20			
+5		1.40			
+7		1.00			
N.P.L		1.50			
T.P.		0.77	107.32		
B.M.	11.55	118.87	10.76	108.11	106.13 ^L

16+00

N.P.L.	118.89	9.20
+10		9.10
+12		9.40
☺		8.80
+10		8.60
+15		9.30
S.P.L.		8.70

16+50

S.P.L.		4.70
+5		6.00
☺		6.10
+5		6.40
+10		4.00
N.P.L.		2.80

17+00

N.P.L.	118.89	0.50
+5		1.10
+7		2.20
+10		2.60
+12		4.10
☺		3.80
+10		3.50
+15		3.70
S.P.L.		2.70

17+50

S.P.L.	118.89	1.50
+2		1.80
+5		2.70
☺		2.60
+10		2.70
+14		0.90
N.P.L.		+ .20

	18+00		
T.P.	118.89	1.17	117.72
N.P.L.	12.07	129.79	9.50
+6		10.70	
+10		11.90	
Φ		12.00	
+15		13.20	
S.P.L.		11.50	

	8+50		
S.P.L.		10.30	
+5		11.70	
Φ		11.60	
+10		11.40	
+12		10.20	
N.P.L.		9.50	

61

	18+70 = W.L. of	St = 50' Wide
N.P.L.	129.79	9.50
+7		11.40
+11		11.70
Φ		11.50
+16		11.80
S.P.L.		11.00
	19+00 = Φ of	St
S.P.L.		11.20
Φ		11.40
+10		10.40
N.P.L.		10.30
	19+30 = E.L. of	St
N.P.L.		10.50
Φ		10.80
+15		11.10
S.P.L.		11.80

19+50

S.P.L.	129,79	12,00
+8		10,70
⊕		10,40
N.P.L.		10,40

20+00

N.P.L.		9,50
+5		10,20
+10		9,80
⊕		10,00
+14		10,60
S.P.L.		11,00

20+50

S.P.L.		8,30
⊕		8,50
+10		8,30
+12		8,70
N.P.L.		7,00

21+00

N.P.L.	129,79	5,90
+3		6,20
+8		7,20
⊕		7,00
+14		6,70
+16		6,30
S.P.L.		6,30

21+50

S.P.L.		4,80
+5		5,00
+7		5,80
⊕		5,60
N.P.L.		5,20

22+00
 N.P.L. 129.79 4.80
 ♀ 5.10
 +15 5.00
 +16 4.20
 S.P.L. 4.10

22+50
 S.P.L. 4.20
 +5 4.80
 ♀ 4.50
 +13 4.60
 +15 4.10
 N.P.L. 4.20

23+00
 N.P.L. 4.50
 +5 5.50
 +10 5.10
 ♀ 5.20
 +15 4.90
 +18 5.30
 S.P.L. 4.50

23+50
 S.P.L. 129.79 7.00
 +6 6.50
 ♀ 6.10
 +8 6.10
 +14 6.80
 N.P.L. 5.30

24+00
 N.P.L. 5.70
 +7 7.50
 +10 6.80
 ♀ 7.10
 S.P.L. 7.80

24+50

S.P.L.	129.79	8.90
♀		8.20
+8		7.80
+12		8.10
N.P.L.		8.10

25+00

N.P.L.		7.40
+5		9.60
♀		9.90
S.P.L.		10.60

25+50

S.P.L.		12.80
♀		12.00
15		11.60
16		10.70
N.P.L.		9.10

25+69 = City Line

N.P.L.	129.79	10.10
+4		11.70
♀		13.10
S.P.L.		13.50
B.M.	9.95	119.84

~~City Limits~~
25+69
25+50

POSTED

Hotel
25 Acorns
28 Church Hill

X-section Univ Ave
2d - 1st

397 284.73
33M Springpole NW Univ - 2^d 280.76
Or 2^d

S	4.6	280.1
cb	4.9	279.8
1/2	5.1	279.6
c	5.4	279.3
1/4	5.7	279.0
cb	5.9	278.8
N	6.1	278.6
N		278.9
cb	5.9	278.8
1/2	5.9	278.8
c	5.6	279.1
1/2	4.8	279.9
cb	4.8	279.9
S	4.8	279.9

W 1/4 2^d

POSTED

284.73
W cb 2^d

S	5.0	279.7
cb	5.0	279.7
1/2	4.8	279.9
c	5.5	278.2
1/2	6.1	278.6
cb	5.8	278.9
N	5.9	278.8
N		279.1
cb	6.1	278.6
1/2	6.3	278.4
c	5.6	278.1
1/2	4.7	280.0
cb	4.7	280.0
S	4.6	280.1

W 1/4 2^d

POSTED

289.73

28' W of 2^d

s	5.3	279.4
sb	5.4	279.3
1/4	5.3	279.4
a	5.7	279.0
1/2	6.1	278.6
cb	6.2	278.5
N	6.0	278.7

30' W

N	6.7	278.0
cb	6.7	278.0
1/2	6.7	278.0
c	6.4	278.3
1/4	5.4	279.3
cb	5.9	278.8
s	5.6	279.1

289.73

75' W

s	6.1	278.6
cb	6.3	278.4
1/4	6.0	278.7
c	7.1	277.6
1/2	7.1	277.6
sb	6.9	277.8
N	6.9	277.8

100' W

N	7.2	277.5
cb	7.4	277.5
1/4	7.3	277.4
c	7.3	277.4
1/2	6.4	278.3
cb	6.8	277.9
s	6.5	278.2

28473

125' W of 2^d

S		7.1	277.6
cb		7.5	277.2
1/2		7.4	277.3
c		7.6	277.1
1/2		7.5	277.2
cb		7.5	277.2
N		7.1	277.6
T.P.	197	279.31	6.89
		277.84	
	150' W		
N		1.6	277.7
cb		1.3	278.0
1/2		1.9	277.4
c		2.5	276.8
1/2		2.2	277.1
cb		2.2	277.1
o		2.1	277.2

27931

175' W

S		2.5	276.8
cb		2.7	276.6
1/2		2.7	276.6
c		2.8	276.5
1/2		2.4	276.9
cb		2.3	277.0
N		2.0	277.3
	200' W		
N		2.6	276.7
cb		2.8	276.5
1/2		2.8	276.5
c		3.2	276.1
1/2		3.2	276.1
cb		3.0	276.3
S		3.1	276.2

67

27931

225' W

S	4.1	275.2
cb	3.8	275.5
1/2	3.5	275.8
S	3.9	275.4
1/2	3.7	275.6
cb	3.3	276.0
N	3.1	276.2

250' W

N	3.5	275.8
cb	3.9	275.4
1/2	4.3	275.0
C	4.2	275.1
1/2	4.1	275.2
cb	4.4	274.9
S	4.5	274.8

27931

275' W of 2^d = EL. 1st

S	5.0	274.3
cb	4.8	274.5
1/2	4.8	274.5
C	4.6	274.7
1/2	3.5	275.8
cb	3.4	275.9
N	4.1	275.3

Ecb: 1st

N	4.8	274.5
S	4.2	275.1
1/2	4.4	274.9
C	5.1	274.2
1/2	5.0	274.3
cb	5.0	274.3
S	4.6	274.7

POSTED

279.81

15 1/4 1st

S	4.5	274.8
cb	5.1	274.2
1/2	4.8	274.5
c	5.1	274.2
1/2	4.9	274.4
cb	4.8	274.5
N	4.8	274.5

ca 1st

N	4.8	274.5
cb	5.7	274.2
1/2	5.0	274.3
c	4.9	274.4
1/2	4.8	274.5
cb	4.8	274.5
S	5.6	273.7

279.81

W 1/4 1st

S	5.5	273.8
cb	5.1	274.2
1/2	5.2	274.1
c	5.4	273.9
1/2	5.4	273.9
cb	5.4	273.9
N	5.4	273.9

W cb 1st

N	5.6	273.7
cb	5.6	273.7
1/2	5.2	273.9
c	5.5	273.8
1/2	5.4	273.9
cb	6.0	273.3
S	6.2	273.1

27931

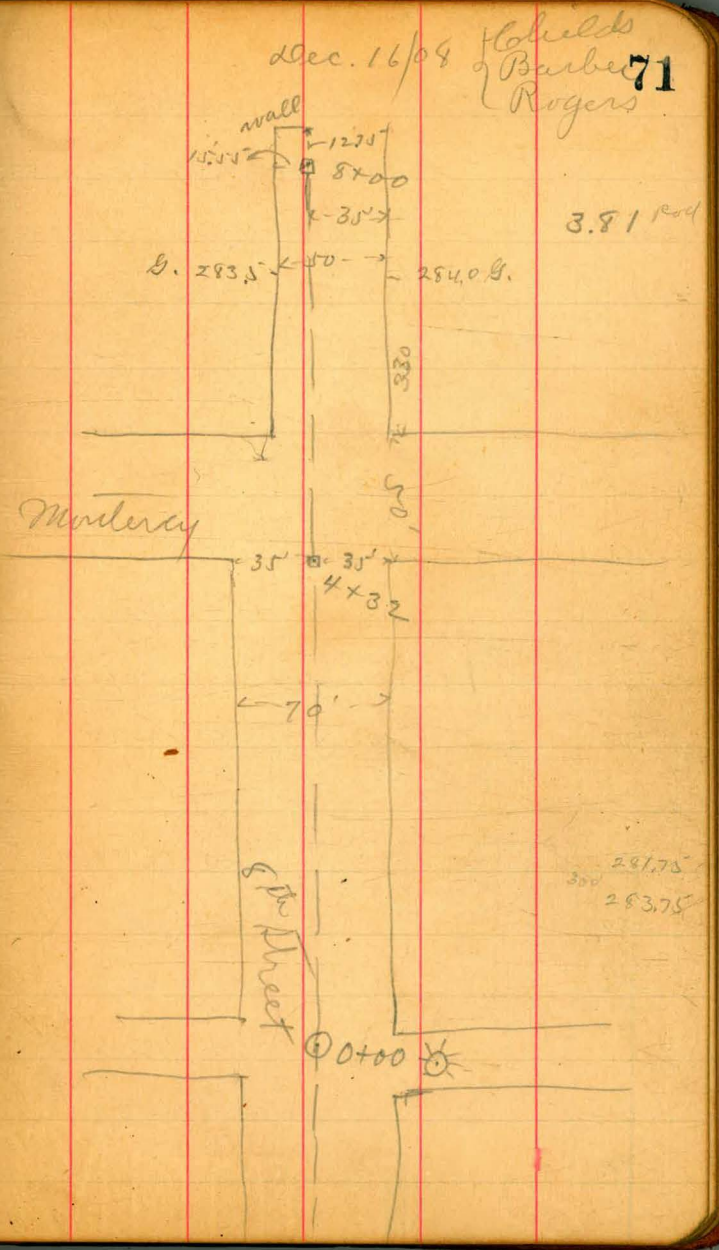
W.L. / et.

S	6.7	272.6
cb	6.6	272.7
1/2	5.6	273.7
c	6.0	273.3
1/4	3.4	273.9
cd	6.0	273.3
N.	5.7	273.6

POSTED

Proposed line on 8th Street

Sta.		H.I.	Rod	Elev.
0+00	M.H. center 8 th	288.20	4.0	
+50			4.9	
1+00			4.8	
+50			4.4	
2+00			4.5	
+50			4.2	
3+00			3.9	
+50			3.3	
4+00			3.2	
+32	to. line Monterey		3.3	284.9
+50			3.9	
5+00			4.2	
+50			3.4	
6+00			3.5	
+50			3.4	
7+00			3.6	
+50			4.1	
8+00			4.5	293.7



1/6/09
Whitelsey
Taylor
Churchman

Sewer Levels Alley Bet. A+B. - 29th 430th

B.M. 29 th + B. S. side of B. Brass Plg end of Curb	199.74		
0 +00			
= E. End of 29 th 12.13	209.91	6.80	201.1
+20		5.90	204.0
+50		4.40	205.5
+75		3.20	206.7
1		7.70	207.2
+25		2.00	207.9
+50		1.20	208.7
+75 TP		0.34	209.57
+75	12.99	222.56	12.50
2			11.20
+25			9.50
+50			8.00
+75			5.70
3			3.90
+25			2.50
TP			1.85

P

P

3+50	6.31	227.08	6.40	220.6
+75			5.80	221.2
4			5.30	221.7
+25			4.70	222.3
+50			4.30	222.7
+75			4.00	223.0
5			3.60	223.4
+25			3.30	223.7
+50			2.80	224.5
+75			3.30	223.7
798			3.20	222.8
6+00 = 11.1. 30 th			4.60	222.2
B.M.			9.15	217.67

222.56
201.1
217.67

Sewer Levels Alley bet B. & C - 29th & 30th

B.M. S.H. Cor	30 th + B. Br. + 19	217.886	
at 0 = W.L. 30 th	0.36	<u>218.25</u>	11.60
+01.		9.90	208.4
+10		6.00	212.3
+25		12.80	205.5
+35		16.70	201.6
+50		12.60	205.7
+75		6.20	212.1
1		4.00	214.3
+25		4.00	214.3
+50		4.40	213.9
+75		5.00	213.3
2		5.40	212.9
+25		6.10	212.2
+50		7.20	211.1
+75		6.30	210.0
3		10.70	207.6
TP		12.77	205.46

		205.46	
3+25	0.14	<u>205.60</u>	0.80
+50			4.00
+75		X	7.70
4			9.20
+25			11.00
TP +50			13.19
4+50	0.48	<u>192.89</u>	1.30
4+75			5.20
5+0			7.70
+25			11.50
TP			12.68
+50	2.77	<u>183.18</u>	5.40
+75			9.40
6+00 = E.H. 29 th			13.60
TP			0.98
TP	13.08	<u>195.28</u>	1.18
TP 17.	6.08	<u>202.15</u>	4.39
			199.76
			192.72

76

77

			97.03
5.29	102.32	3.23	99.09
4.17	103.26	9.14	94.12

N.P.L. Sta 25, 10.40
 60.42 " 13
 " 25+50 2.60
 17

81.50 27+50 N.P.L. 11.80
 28+0 " 7.00
 25+50 " 2.50

284.43 B.M.
 3.15

287.58 H.I.

2.70
 284.88 - Elev. of Hill at Monterey

287.60
 6
 288.20
 3.3
 284.9

297.55
 60.2
 289.53
 232.
 293.85
 540
 288.40
 650
 295.25
 931
 285.94
 120
 286.98

289.91
 142
 289.93
 907
 289.76
 378
 289.24
 673
 277.51
 266
 289.17
 1184
 268.83

14+86
 3225
 365
 1801
 2729.7
 142.47
 2087.2
 600
 41.09
 26+99
 58.91
 25+82
 128

686
 1736
 129

65.
 20.
 85.
 100.
 32.21
 33.11
 336.32
 62.11
 397.43

N. Side
 Com Road
 from 0+62.11

312.77
 64.22
 376.99
 1027
 387.26

3+97.43
 3187.26
 10.17
 5.08
 3+92.34

26203
 40
 1048120
 28440

1277
 1027
 2304
 4+5004+4476
 10.45
 4+39.52
 4+6048
 366

DISTANCES FROM CENTER OF ROADWAY FOR CROSS-SECTIONING.

4.3 860
 100.00
 1463
 85.37
 FOR SINGLE TRACK EMBANKMENT.
 ROADWAY 14 FEET WIDE. SIDE SLOPES 1 1/2 TO 1.

	0	.1	.2	.3	.4	.5	.6	.7	.8	.9	
0	7.0	7.2	7.3	7.5	7.6	7.8	7.9	8.1	8.2	8.4	0
1	8.5	8.7	8.8	9.0	9.1	9.3	9.4	9.6	9.7	9.9	1
2	10.0	10.2	10.3	10.5	10.6	10.8	10.9	11.1	11.2	11.4	2
3	11.5	11.7	11.8	12.0	12.1	12.3	12.4	12.6	12.7	12.9	3
4	13.0	13.2	13.3	13.5	13.6	13.8	13.9	14.1	14.2	14.4	4
5	14.5	14.7	14.8	15.0	15.1	15.3	15.4	15.6	15.7	15.9	5
6	16.0	16.2	16.3	16.5	16.6	16.8	16.9	17.1	17.2	17.4	6
7	17.5	17.7	17.8	18.0	18.1	18.3	18.4	18.6	18.7	18.9	7
8	19.0	19.2	19.3	19.5	19.6	19.8	19.9	20.1	20.2	20.4	8
9	20.5	20.7	20.8	21.0	21.1	21.3	21.4	21.6	21.7	21.9	9
10	22.0	22.2	22.3	22.5	22.6	22.8	22.9	23.1	23.2	23.4	10
11	23.5	23.7	23.8	24.0	24.1	24.3	24.4	24.6	24.7	24.9	11
12	25.0	25.2	25.3	25.5	25.6	25.8	25.9	26.1	26.2	26.4	12
13	26.5	26.7	26.8	27.0	27.1	27.3	27.4	27.6	27.7	27.9	13
14	28.0	28.2	28.3	28.5	28.6	28.8	28.9	29.1	29.2	29.4	14
15	29.5	29.7	29.8	30.0	30.1	30.3	30.4	30.6	30.7	30.9	15
16	31.0	31.2	31.3	31.5	31.6	31.8	31.9	32.1	32.2	32.4	16
17	32.5	32.7	32.8	33.0	33.1	33.3	33.4	33.6	33.7	33.9	17
18	34.0	34.2	34.3	34.5	34.6	34.8	34.9	35.1	35.2	35.4	18
19	35.5	35.7	35.8	36.0	36.1	36.3	36.4	36.6	36.7	36.9	19
20	37.0	37.2	37.3	37.5	37.6	37.8	37.9	38.1	38.2	38.4	20
21	38.5	38.7	38.8	39.0	39.1	39.3	39.4	39.6	39.7	39.9	21
22	40.0	40.2	40.3	40.5	40.6	40.8	40.9	41.1	41.2	41.4	22
23	41.5	41.7	41.8	42.0	42.1	42.3	42.4	42.6	42.7	42.9	23
24	43.0	43.2	43.3	43.5	43.6	43.8	43.9	44.1	44.2	44.4	24
25	44.5	44.7	44.8	45.0	45.1	45.3	45.4	45.6	45.7	45.9	25
26	46.0	46.2	46.3	46.5	46.6	46.8	46.9	47.1	47.2	47.4	26
27	47.5	47.7	47.8	48.0	48.1	48.3	48.4	48.6	48.7	48.9	27
28	49.0	49.2	49.3	49.5	49.6	49.8	49.9	50.1	50.2	50.4	28
29	50.5	50.7	50.8	51.0	51.1	51.3	51.4	51.6	51.7	51.9	29
30	52.0	52.2	52.3	52.5	52.6	52.8	52.9	53.1	53.2	53.4	30
31	53.5	53.7	53.8	54.0	54.1	54.3	54.4	54.6	54.7	54.9	31
32	55.0	55.2	55.3	55.5	55.6	55.8	55.9	56.1	56.2	56.4	32
33	56.5	56.7	56.8	57.0	57.1	57.3	57.4	57.6	57.7	57.9	33
34	58.0	58.2	58.3	58.5	58.6	58.8	58.9	59.1	59.2	59.4	34
35	59.5	59.7	59.8	60.0	60.1	60.3	60.4	60.6	60.7	60.9	35
36	61.0	61.2	61.3	61.5	61.6	61.8	61.9	62.1	62.2	62.4	36

135
 1080
 6180
 1080
 Calculated by Julien A. Hall, M. Am. Soc. C. E.