

LEVEL BOOK

400

F.B. 298

298

H. S. CROCKER COMPANY

DRAWING MATERIALS AND SURVEYING INSTRUMENTS **298**

SAN FRANCISCO

TABLES FOR EXCAVATIONS AND EMBANKMENTS

DISTANCES FROM CENTER OF ROADWAY FOR CROSS-SECTIONING

Roadway 18 Feet Wide. Side Slopes 1 to 1.

For Single Track Excavation

MICROFILMED
Copyright 1958 by Krieger-Elmer Co.

	0	.1	.2	.3	.4	.5	.6	.7	.8	.9	
0	9.0	9.1	9.2	9.3	9.4	9.5	9.6	9.7	9.8	9.9	0
1	10.0	10.1	10.2	10.3	10.4	10.5	10.6	10.7	10.8	10.9	1
2	11.0	11.1	11.2	11.3	11.4	11.5	11.6	11.7	11.8	11.9	2
3	12.0	12.1	12.2	12.3	12.4	12.5	12.6	12.7	12.8	12.9	3
4	13.0	13.1	13.2	13.3	13.4	13.5	13.6	13.7	13.8	13.9	4
5	14.0	14.1	14.2	14.3	14.4	14.5	14.6	14.7	14.8	14.9	5
6	15.0	15.1	15.2	15.3	15.4	15.5	15.6	15.7	15.8	15.9	6
7	16.0	16.1	16.2	16.3	16.4	16.5	16.6	16.7	16.8	16.9	7
8	17.0	17.1	17.2	17.3	17.4	17.5	17.6	17.7	17.8	17.9	8
9	18.0	18.1	18.2	18.3	18.4	18.5	18.6	18.7	18.8	18.9	9
10	19.0	19.1	19.2	19.3	19.4	19.5	19.6	19.7	19.8	19.9	10
11	20.0	20.1	20.2	20.3	20.4	20.5	20.6	20.7	20.8	20.9	11
12	21.0	21.1	21.2	21.3	21.4	21.5	21.6	21.7	21.8	21.9	12
13	22.0	22.1	22.2	22.3	22.4	22.5	22.6	22.7	22.8	22.9	13
14	23.0	23.1	23.2	23.3	23.4	23.5	23.6	23.7	23.8	23.9	14
15	24.0	24.1	24.2	24.3	24.4	24.5	24.6	24.7	24.8	24.9	15
16	25.0	25.1	25.2	25.3	25.4	25.5	25.6	25.7	25.8	25.9	16
17	26.0	26.1	26.2	26.3	26.4	26.5	26.6	26.7	26.8	26.9	17
18	27.0	27.1	27.2	27.3	27.4	27.5	27.6	27.7	27.8	27.9	18
19	28.0	28.1	28.2	28.3	28.4	28.5	28.6	28.7	28.8	28.9	19
20	29.0	29.1	29.2	29.3	29.4	29.5	29.6	29.7	29.8	29.9	20
21	30.0	30.1	30.2	30.3	30.4	30.5	30.6	30.7	30.8	30.9	21
22	31.0	31.1	31.2	31.3	31.4	31.5	31.6	31.7	31.8	31.9	22
23	32.0	32.1	32.2	32.3	32.4	32.5	32.6	32.7	32.8	32.9	23
24	33.0	33.1	33.2	33.3	33.4	33.5	33.6	33.7	33.8	33.9	24
25	34.0	34.1	34.2	34.3	34.4	34.5	34.6	34.7	34.8	34.9	25
26	35.0	35.1	35.2	35.3	35.4	35.5	35.6	35.7	35.8	35.9	26
27	36.0	36.1	36.2	36.3	36.4	36.5	36.6	36.7	36.8	36.9	27
28	37.0	37.1	37.2	37.3	37.4	37.5	37.6	37.7	37.8	37.9	28
29	38.0	38.1	38.2	38.3	38.4	38.5	38.6	38.7	38.8	38.9	29
30	39.0	39.1	39.2	39.3	39.4	39.5	39.6	39.7	39.8	39.9	30
31	40.0	40.1	40.2	40.3	40.4	40.5	40.6	40.7	40.8	40.9	31
32	41.0	41.1	41.2	41.3	41.4	41.5	41.6	41.7	41.8	41.9	32
33	42.0	42.1	42.2	42.3	42.4	42.5	42.6	42.7	42.8	42.9	33
34	43.0	43.1	43.2	43.3	43.4	43.5	43.6	43.7	43.8	43.9	34
35	44.0	44.1	44.2	44.3	44.4	44.5	44.6	44.7	44.8	44.9	35
36	45.0	45.1	45.2	45.3	45.4	45.5	45.6	45.7	45.8	45.9	36

Calculated by Julien A. Hall, M. Am. Soc. C. E.

157.17
 S - n.w. cor. appk. juniper
 N s.w. cor. met. Box
 2nd east 30th
 157.24
 Return to City Engineers Office
 City Hall, San Diego, Cal.

Cross-Section of (Fragment) Sequoia
 From Chico To Mission View Blvd. ² ₃₃₈ ^{San} _{Yuma}
 1

3.59 36.86 33.7 B.M.

S.L. Chico

W	3.6	33.3
U	4.5	32.6
L	4.8	32.1
U	5.2	31.7
U	5.5	31.4
U	5.8	31.1
E	6.4	30.5
	50' 50	
E	7.2	29.7
U	6.6	30.3
L	6.1	30.8
L	5.7	31.2
U	6.3	31.6
U	4.8	32.1
W	4.1	32.8

0
1
2
3
4
5
6
7
8
9
10
11
12
13
14
15
16
17
18
19
20
21
22
23
24
25
26
27
28
29
30
31
32
33
34
35
36

36.86

100' S. Chico

N	4.8	32.1
U	5.5	31.4
U	6.0	30.0
O	6.3	30.6
4	6.6	30.3
U	7.0	29.9
E	7.5	29.4

150' So

E	8.2	28.7
U	7.8	29.1
U	7.3	29.6
U	7.1	29.8
4	6.8	30.1
U	6.4	30.5
W	6.6	31.3

Sequoia.

200' S. - N. L. Sunset

2

N	6.5	30.4
U	6.7	30.2
U	7.0	29.9
U	7.3	29.6
U	7.8	29.1
U	8.2	28.7
E	8.9	28.0

50' line Sunset

E	10.0	26.9		
U	9.4	27.5		
U	9.0	27.9		
U	8.8	28.1		
4	8.5	28.4		
U	8.7	28.7		
W	7.6	29.3		
TP	7.32	30.90	8.79	28.57

31.90
37.50 June 1

11	2.3	28.6
U	3.1	27.8
4	3.4	27.5
C	3.6	27.3
4	3.9	27.0
U	4.6	26.3
E	4.6	26.3

100 50

E	5.5	25.4
U	5.5	25.4
4	4.9	26.0
C	4.5	26.4
4	4.1	26.8
U	3.9	27.0
11	3.4	27.5

157 50

3

W	4.3	26.6
U	4.6	26.3
4	5.0	25.9
C	5.3	25.6
4	5.7	25.2
U	6.1	24.8
E	6.7	24.2

200 50

C	7.6	23.3
U	7.2	23.7
4	6.7	24.2
C	6.3	24.6
4	6.1	24.8
U	5.7	25.2
W	5.2	25.7

3890

250' So of Sunset

W	6.1	24.8
U	6.7	24.2
Y	6.9	24.0
C	7.0	23.9
L	7.2	23.7
U	7.6	23.3
E	8.1	22.8

310' So

E	7.0	21.9
U	8.6	22.3
Y	8.1	22.7
C	7.7	23.2
L	7.6	23.3
U	7.1	23.8
W	6.7	24.2

Sequoia

350' So

4

W	7.4	23.5
U	7.9	23.0
Y	8.2	22.7
C	8.6	22.3
L	8.7	22.2
U	9.0	21.9
E	9.3	21.6

400' So

E	9.5	21.4
U	9.1	21.8
Y	8.7	22.2
C	8.5	22.4
L	8.2	22.7
U	8.1	22.8
W	7.7	23.2

30.90

450 Feet Sunset

W	7.5	23.4
U	8.1	22.8
4	8.2	22.7
U	8.5	22.4
4	8.8	22.1
U	8.6	22.3
E	8.8	22.1

500 So.

E	7.7	23.2		
U	7.6	23.3		
4	7.5	23.4		
U	7.4	23.5		
4	7.7	23.2		
U	7.3	23.6		
W	7.0	23.9		
T.P.	7.21	31.25	6.86	24.04

500 So.

5

W	6.4	24.9
U	6.5	24.8
4	6.5	24.8
U	6.4	24.9
4	6.2	25.1
U	6.4	24.9
E	6.8	24.5

600 So. N.L. Prosovolt

E	5.6	25.7
U	5.3	26.0
4	5.3	26.0
U	5.4	25.9
4	5.4	25.9
U	5.6	25.7
W	5.9	25.4

31.25

5 line Roosevelt

W	4.5	26.8
a	4.8	26.5
4	4.9	26.4
U	5.0	26.3
4	4.9	26.4
a	5.0	26.3
E	5.1	26.2

50' 50

E	5.4	25.9
dr	5.0	26.3
4	4.8	26.5
U	4.8	26.5
4	4.7	26.6
U	4.7	26.6
W	4.5	26.8

Saguoia

100' 50

6

W	4.5	26.8
U	4.8	26.5
4	5.0	26.3
U	5.2	26.1
4	5.3	26.0
U	5.6	25.7
E	5.8	25.5

100' 50

U	6.5	24.8
U	6.1	25.2
4	6.0	25.3
U	5.8	25.5
4	5.4	25.9
U	5.5	25.8
W	6.2	26.1

31.35

200 S. Roosevelt.

VI	6.0	25.3
U	6.0	25.3
4	6.4	24.9
U	6.5	24.8
4	6.7	24.6
U	6.8	24.5
E	7.3	24.0

200 S.

E	8.1	23.2
U	7.8	23.5
4	7.6	23.7
U	7.4	23.9
4	7.2	24.1
U	6.9	24.4
W	6.5	24.8

200 S.

7

W	7.3	24.0
U	7.8	23.5
4	8.0	23.3
U	8.2	23.1
4	8.5	22.8
U	8.9	22.4
E	9.1	22.2

350 S.

E	10.1	21.2
U	9.4	21.9
4	9.1	22.2
U	9.0	22.3
4	8.6	22.7
U	8.4	22.9
W	8.2	23.1

7.8	4.44	27.46	8.72	23.02
-----	------	-------	------	-------

27.46

390' So Roosevelt N.L. Mission View Blvd N. 1.

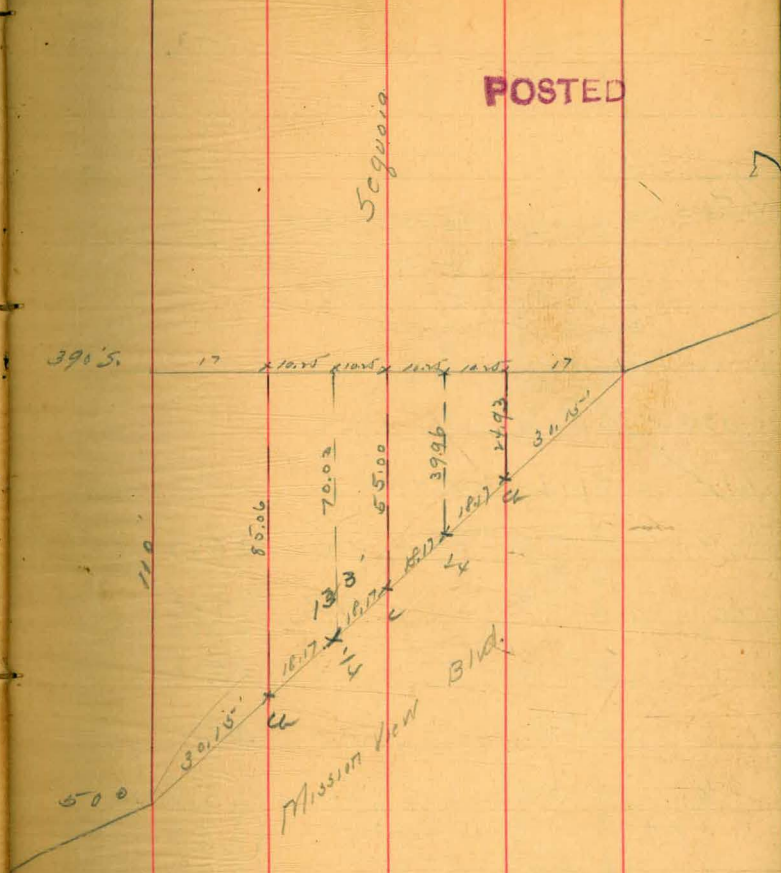
W	5.8	22.7
Ch	6.2	22.3
4	5.5	22.0
C	5.6	21.9
4	5.9	21.6
Ch	6.4	21.1
F	6.8	20.7

500' So on VLL. 390' S on EL. - N.L. Mission View Blvd N. 2.

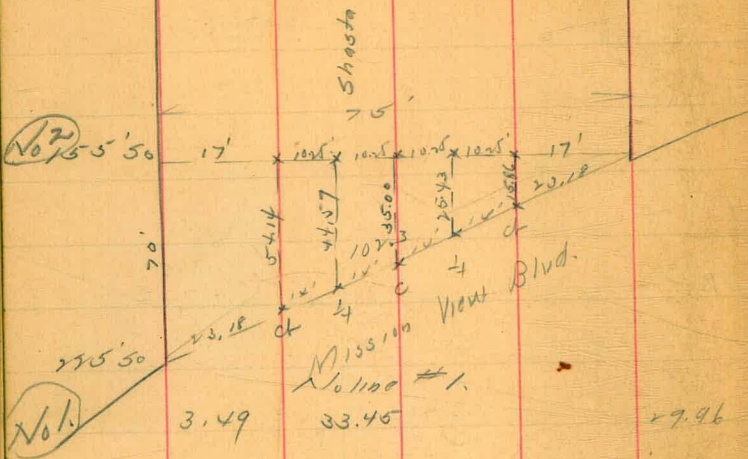
E	6.8	20.7
Ch	6.7	20.8
4	6.5	21.0
C	6.5	21.0
4	6.5	21.0
Ch	6.3	21.2
W	6.1	21.4

Sequoia

8



Cross Section of Shasta St - Mission View Blvd
 to Pacific Ave. $\frac{2}{12}$ } Dam
 $\frac{13}{03}$ } Repair
 } Entry



W	9.2	24.3
U	{ 9.1 3.8	{ 24.1 23.7
L	8.4	25.1
U	8.2	25.3
#	8.2	25.3
3' W U	{ 8.1 6.3 6.7	{ 24.9 26.8 26.7
U		
E	6.1	27.4

No. line #2 POSTED

9

L	6.1	27.4
U	{ 5.8 6.7	{ 27.7 26.8
L	6.8	26.7
U	6.5	27.0
U	6.6	26.9
U	{ 6.8 5.6	{ 26.7 27.9
W	5.8	27.7

100' 5.00 of La Playa

W	4.5	29.0
U	{ 3.9 5.3	{ 28.6 28.2
L	5.0	28.5
U	4.9	28.6
L	5.1	28.4
3' W U	{ 6.7 4.3	{ 27.3 29.1
U		
E	4.4	29.1

33.45

50 50 of La Playa

E	3.8	29.7
U	3.9	29.6
W U	{ 3.9	{ 29.6
U	{ 3.6	{ 28.9
U	4.0	29.5
(No 2) C	3.5	30.0
U	3.7	29.8
U	{ 4.5	{ 29.0
U	{ 3.9	{ 29.6
U	3.9	29.6

50 line La Playa

W	3.5	30.0
U	{ 3.4	{ 30.1
U	{ 4.0	{ 29.5
U	3.4	30.1
U	3.0	30.5
U	3.5	30.0
U	{ 4.1	{ 29.4
U	{ 3.2	{ 30.3
E	3.2	30.3

Shasta

1/2 line La Playa

10

4.99 34.95

29.96

E	3.9	31.1
U	4.0	31.0
U	4.3	30.7
U	4.0	31.0
U	3.9	31.1
U	4.0	31.0
U	4.1	30.9

50 No

U	3.7	31.3
U	3.5	31.5
U	3.5	31.5
U	3.3	31.7
U	3.4	31.6
U	3.3	31.6
U	3.1	31.9

3495

100 No of La Playa

E		2.6	32.4
U		2.7	32.3
U		2.8	32.2
(No 2)		2.8	32.2
U		3.1	31.9
U		3.3	31.7
W		3.2	31.8
	100 No		
W		3.7	31.3
U	U	3.5	31.5
U	U	3.0	32.0
	U	2.8	32.2
	U	2.7	32.3
	U	2.7	32.6
E	E	2.2	32.8

11

200 No

E		2.3	32.7
U		2.7	32.3
U		2.9	32.1
U		3.2	31.8
U		3.8	31.2
U		4.2	30.5
W		4.9	30.1
	200 No		
W		7.2	27.8
U		6.1	28.9
U		5.3	29.7
U		4.6	30.4
U		4.1	30.9
U		3.6	31.4
E		2.8	32.2

3495

300 No of Lo Poyo.

E	4.7	30.3
U	5.7	29.1
H	6.7	28.3
C	7.5	27.5
4	7.9	27.1
u	8.2	26.8
W	8.9	26.1

350 No.

W	10.0	25.0
u	9.5	25.6
4	8.9	26.1
C	8.4	26.6
4	8.0	27.0
u	7.4	27.6
E	6.4	28.6

Shasta

500 No

12

E	7.4	27.6
u	8.2	26.8
4	8.6	26.4
C	9.0	26.0
4	9.4	25.6
u	9.9	25.1
W	10.2	24.8

450 No.

W	9.9	25.1
u	9.4	25.6
4	9.0	26.0
C	8.4	26.6
4	8.3	26.7
u	7.8	27.2
E	7.3	27.7

TP 7.00 34.77 7.21 27.74
8

3477

500 No of Lo Taya.

E	7.0	27.8
U	7.4	27.4
L	7.7	27.1
C	7.7	27.1
4	8.2	26.6
U	8.6	26.2
W	9.1	25.7

550 No

W	8.0	26.8
U	7.4	27.4
4	7.3	27.5
C	7.1	27.7
4	7.0	27.8
U	6.7	28.1
E	6.1	28.7

13

600 No = S. L. Roosevelt

E	5.9	28.9
U	6.0	28.8
4	6.1	28.7
C	6.2	28.6
4	6.4	28.4
U	6.6	28.2
W	6.8	28.0

No 1000 Roosevelt

W	5.3	29.5
U	5.1	29.7
4	5.0	29.8
C	4.9	29.9
4	4.8	30.0
U	4.7	30.1
E	4.7	30.1

POSTED

34.77

50 No. of Roosevelt.

E	4.1	30.7
U	3.9	30.9
4	3.8	31.0
U	3.8	31.0
4	3.9	30.9
U	4.2	30.6
W	4.2	30.6

100 No.

W	3.1	31.7
U	3.0	31.8
4	2.9	31.9
U	2.8	32.0
4	2.9	31.9
U	2.9	31.9
E	2.1	31.9

Shasta

150 No

14

E	2.1	32.7
U	2.1	32.7
4	2.0	32.8
U	1.7	33.1
4	1.7	33.1
U	1.8	33.6
W	1.9	32.9

200 No

W	1.2	33.6
U	1.2	33.6
4	1.2	33.6
U	1.3	33.5
4	1.3	33.5
U	1.3	33.5
E	1.3	33.5

T.P. 10.86 44.47 1.16 33.61

44.47

350 No. of Roosevelt.

E	10.4	34.1
U	10.3	34.2
4	10.1	34.4
C	10.0	34.5
4	10.1	34.4
U	10.2	34.3
W	10.1	34.4

300 No.

W	9.1	35.4
U	9.4	35.1
4	9.2	35.3
C	9.1	35.4
4	9.4	35.1
U	9.3	35.2
E	9.7	34.8

350 No.

E	8.9	35.6
U	8.7	35.8
4	8.7	35.8
C	8.7	35.8
4	8.7	35.8
U	8.5	36.0
W	8.3	36.2

400 No.

W	7.1	37.4
U	7.4	37.1
4	7.5	37.0
C	7.5	37.0
4	7.8	36.7
U	8.0	35.5
E	8.4	36.1

14.47

150 No of Roosevelt.

E	7.1	37.4
U	7.0	37.5
4	6.8	37.7
U	6.5	38.0
4	6.1	38.4
U	5.9	38.6
W	5.8	38.7

550 No

W	4.5	40.0
U	4.9	39.6
4	5.0	39.5
U	5.7	39.4
4	5.7	39.1
U	5.7	38.8
E	6.2	38.3

Shasta.

550 No

16

E	4.8	39.7
U	4.2	40.3
4	3.9	40.6
U	3.7	40.8
4	3.5	41.0
U	3.3	41.2
W	3.1	41.4

600 No - S. Line Sunset

W	1.7	42.8
U	2.1	42.4
4	2.4	42.1
U	2.3	42.2
4	2.1	41.6
U	3.3	41.2
E	3.5	40.9

T.P. 9.7V 52.3V 1.87 42.60

52104

No line sunset.

E	9.7	42.6
cl	9.1	43.2
4	8.6	43.7
c	8.2	44.1
4	8.1	44.2
cl	8.0	44.3
W	7.8	44.5

50 N.

W	6.8	45.5
cl	6.6	45.7
4	6.7	45.6
c	7.0	45.3
4	7.7	44.6
cl	7.9	44.4
E	8.5	43.8

100 Ho

E	7.1	45.2
cl	6.8	45.5
4	6.3	46.0
c	5.9	46.4
4	6.1	46.2
cl	5.9	46.4
W	5.4	46.9

150 Ho

W	4.3	48.0
cl	4.5	47.8
4	4.7	47.6
c	4.8	47.5
4	5.3	47.0
cl	5.7	46.6
E	6.3	46.0

5732

201 No. 5.0 line Chico

E	5.1	47.2
U	4.3	48.0
4	3.8	48.5
C	3.7	48.6
4	3.5	48.8
U	3.5	48.8
W	3.3	49.0

5. U.

W	2.9	49.4
U	3.2	49.1
4	2.3	49.0
C	3.4	48.9
4	3.7	48.6
U	4.0	48.3
E	4.5	47.8

Note - Chico St does not cross Shasta

but stops at east line - 1576 W.M.

Shasta.

5. 4

18

POSTED

E	4.3	48.0
U	3.6	48.7
4	3.4	48.9
C	3.1	49.2
4	3.2	49.1
U	3.0	49.3
W	2.6	49.7

Ctr.

W	2.6	49.7
U	2.8	49.5
4	2.9	49.4
C	3.0	49.3
4	3.2	49.1
U	3.4	48.9
E	4.0	48.3

	No	Chico
E	3.9	48.4
U	3.2	49.1
U	2.9	49.4
C	2.6	49.7
U	2.6	49.7
U	2.4	49.9
W	2.3	50.0

No. CG.

W	2.2	50.0
U	2.3	50.0
U	2.0	49.8
C	2.7	49.6
U	2.9	49.4
U	3.1	49.2
E	3.6	48.7

No. line

E	3.2	49.1		
U	2.8	49.5		
U	2.5	49.8		
C	2.2	50.1		
U	2.0	50.3		
U	1.9	50.4		
W	1.9	50.4		
T.P.	460	55.15	1.77	50.50

67 No. Chico

W	3.7	51.5
U	4.3	50.9
U	4.0	51.2
C	3.8	51.4
U	3.8	51.4
U	4.0	51.2
E	4.4	50.8

55,10

	100 No	Chic	
E		4.0	51.2
U		3.3	51.9
4		3.0	52.2
C		2.9	52.3
H		3.2	52.0
U		3.3	51.9
W		3.2	52.0

150 No

W	2.4	52.5
U	2.6	52.6
4	2.7	52.5
C	2.9	52.3
4	2.8	52.4
U	2.9	52.3
E	3.4	51.5

Shasta

200 No

20

E	2.0	53.2
U	1.5	53.7
4	1.7	53.5 ED
C	1.8	53.4
4	2.3	52.9
U	2.5	52.7
W	2.1	53.1

255 No - S. L. Pacific Ave

W	2.0	53.2
U	2.2	53.0
4	2.0	53.2
C	2.1	53.1
4	2.2	53.0
U	2.6	52.7
E	2.5	52.7

Bm. Hill S.E. Pac. Y. 11/10/68. 46 4/6.69

Cross Section of Merced-Pacific to R 1800

	+	-		
	347	50.16	46.69	E
	So. line	Pacific Ave		CL
E		3.5	46.7	4
CL		4.2	46.0	C
4		4.5	45.7	4
C		4.7	45.5	CL
4		5.0	45.2	N
CL		5.2	45.0	
W	2	5.7	44.5	N
	25	50		CL
W		5.8	44.4	4
CL		5.2	45.0	C
4		5.1	45.1	4
C		4.9	45.3	W
4		4.5	45.7	E
CL		4.1	46.1	
E		3.6	46.6	

75.50

4.0	46.2
4.5	45.7
4.7	45.5
5.0	45.2
5.4	44.8
5.7	44.5
6.0	44.2

125.50

6.3	43.9
5.9	44.3
5.8	44.4
5.4	44.8
5.2	45.0
4.8	45.4
4.4	45.8

5016

175 So of Pacific

E	4.7	45.5
a	5.3	44.9
4	5.7	44.5
c	5.9	44.3
4	6.1	44.1
a	6.4	43.5
W	6.6	43.6

225 S. Pac

W	7.1	43.1
cb	6.7	43.5
1/4	6.6	43.6
c	6.3	43.9
1/4	6.1	44.1
cb	5.8	44.4
E	5.2	45.0

Merced

22

275 S. Pac.

E	5.7	44.5
cb	6.2	44.0
1/4	6.5	43.7
c	6.8	43.4
1/4	6.9	43.3
cb	7.1	43.1
W	7.6	42.6

325 S. Pac.

W	8.2	42.0
cb	7.9	42.3
1/4	7.7	42.5
c	7.4	42.8
1/4	7.2	43.0
cb	6.9	43.3
E	6.3	43.9

375 S. Pac.

E	7.0	43.2
cb	7.5	42.7
1/4	7.8	42.4
C	8.0	42.2
1/4	8.3	41.9
cb.	8.5	41.7
W.	8.9	41.3

425 S. Pac.

W	9.7	40.5
cb	9.2	41.0
1/4	8.9	41.3
C	8.8	41.4
1/4	8.6	41.6
cb	8.3	41.9
E.	7.6	42.6

475 S. Pac.

E	8.7	41.5
cb	9.1	41.1
1/4	9.5	40.7
C	9.8	40.4
1/4	10.1	40.1
cb.	10.5	39.7
W	10.6	39.6

525 S. Pac. N.E. Sunset.

W	11.7	38.5
cb	11.3	38.9
1/4	11.1	39.1
C	10.8	39.4
1/4	10.6	39.6
cb	10.2	40.0
E	9.8	40.4

T.P.

60.16
2.12 40.64 11.64 38.52

S.L. Sunset

E		1.9	38.7
cb		2.4	38.2
1/4		2.7	37.9
C		2.9	37.7
1/4		3.2	37.4
cb		3.4	37.2
W		3.9	36.7
	50	S.	
W		4.7	35.9
cb		4.5	36.1
1/4		4.2	36.4
C		3.9	36.7
1/4		3.7	36.9
cb		3.5	37.1
E		2.9	37.7

Merced.

24

100 S Sunset

E		4.0	36.6
cb		4.6	36.0
1/4		4.8	35.8
C		5.0	35.6
1/4		5.3	35.3
cb		5.6	35.0
W		5.9	34.7
	150	S.	
W		6.7	33.9
cb		6.6	34.0
1/4		6.4	34.2
C		6.1	34.5
1/4		5.8	34.8
cb		5.6	35.0
E		5.1	35.5

200 S. Sunset

E	6.1	34.5
cb	6.5	34.1
1/4	6.7	33.9
c	6.9	33.7
1/4	7.1	33.5
cb	7.4	33.2
W	7.8	32.8

250 S.

W	8.6	32.0
cb	8.4	32.2
1/4	8.2	32.4
c	7.8	32.8
1/4	7.7	32.9
cb	7.5	33.1
E	7.2	33.4

300 S. Sunset

E	8.1	32.5
cb	8.4	32.2
1/4	8.6	32.0
c	8.8	31.8
1/4	9.0	31.6
cb	9.2	31.4
W	9.6	31.0

350 S.

W	10.4	30.2
cb	10.1	30.5
1/4	9.9	30.7
c	9.7	30.9
1/4	9.5	31.1
cb	9.2	31.4
E	8.8	31.8

15

40.64

400 S Sunset

E	9.6	31.0
cb	10.0	30.6
1/4	10.2	30.4
c	10.4	30.2
1/4	10.5	30.1
cb	10.8	29.8
W	11.0	29.6

450 S.

W	11.2	29.4
cb	11.1	29.5
1/4	10.9	29.7
c	10.7	29.9
1/4	10.6	30.0
cb	10.5	30.1
E	10.2	30.4

T.P.

1.81

21.85

10.60

30.04

500 S. Sunset

E	1.8	30.1
cb	2.3	29.6
1/4	2.5	29.4
c	2.5	29.4
1/4	2.6	29.3
cb	2.7	29.2
W	2.8	29.1

550 S.

W	3.00	28.9
cb	3.1	28.8
1/4	3.0	28.9
c	3.1	28.8
cb 1/4	3.1	28.8
cb	3.0	28.9
E	2.8	29.1

26

31.80

600 S, Sunset - Mt. Roosevelt

E	3.7	28.2
cb	3.6	28.3
1/4	3.7	28.2
c	3.6	28.3
1/4	3.5	28.4
cb	3.6	28.3
W	3.5	28.4

S. Mt. Roosevelt area

W	4.6	27.3
cb	4.6	27.3
1/4	4.6	27.3
c	4.5	27.4
1/4	4.9	27.1
cb	5.1	26.8
E	5.2	26.7

Merced

27

50 S, Roosevelt

E	6.1	25.8
cb	6.1	25.8
1/4	6.0	25.9
c	5.9	26.0
1/4	5.6	26.3
cb	5.7	26.2
W	5.6	26.3

100 S.

W	6.4	25.5
cb	6.6	25.3
1/4	6.6	25.3
c	6.8	25.1
1/4	7.0	24.9
cb	7.1	24.8
E	7.3	24.6

05

31.80

150 S. Roosevelt

E	8.3	23.6
cb	8.1	23.8
1/4	8.0	23.9
c	7.8	24.1
1/4	7.7	24.2
cb	7.5	24.4
W	7.4	24.5

200 S.

W	8.3	23.6
cb	8.3	23.6
1/4	8.4	23.5
c	8.4	23.5
1/4	8.3	23.4
cb	8.3	23.4
E	8.8	23.1

28

250 S. Roosevelt

E	9.2	22.7
cb	9.2	22.7
1/4	9.1	22.8
c	8.8	23.1
1/4	8.8	23.1
cb	8.8	23.1
W	8.7	23.2

TP	3.17	26.30	9.71	23.14
----	------	-------	------	-------

300 S.

W	3.7	22.6
cb	3.8	22.5
1/4	3.9	22.5
c	3.8	22.5
1/4	4.0	22.3
cb	3.9	22.4
E	3.9	22.4

76.33

550' 50 of Roseville

E	4.1	22.2
cl	4.1	22.2
f	4.0	22.3
c	4.0	22.3
f	4.1	22.2
cl	4.2	22.1
N	4.1	22.2
400' 50		
N	4.4	21.9
cl	4.4	21.9
f	4.4	21.9
c	4.2	22.1
f	4.2	22.1
cl	4.2	22.1
E	4.3	22.0

Merced

450' 50

29

E	3.9	22.4
cl	4.2	22.1
f	4.3	22.0
c	4.2	22.1
f	4.4	21.9
cl	4.5	21.8
N	4.6	21.7
501' 50		
N	4.5	21.8
cl	4.3	22.0
f	4.3	22.0
c	4.0	22.3
f	3.9	22.4
cl	3.7	22.6
E	3.4	22.9

26.33

550 So of Roosevelt

E	2.3	24.0
U	2.8	23.5
L	3.1	23.2
C	3.1	23.2
4	3.4	22.9
U	3.5	22.8
N	3.8	22.5

600 So N.L. La Playa Ave

N	2.8	23.5
U	2.6	23.7
L	2.3	24.0
C	2.0	24.3
4	1.6	24.7
U	1.3	25.0
E	0.7	25.6

T.P.	6.80	32.11	1.02	25.31
------	------	-------	------	-------

Cor. H.I	5.61	32.07	5.61	26.50 / 26.46
----------	------	-------	------	---------------

32.07

So. line La Playa

30

E	5.6	26.5
U	6.0	26.1
S	6.1	26.0
C	6.3	25.8
4	6.2	25.9
U	6.3	25.8
N	6.7	25.4

5750

N	6.2	25.9
U	6.2	25.9
L	6.0	26.1
C	6.0	26.1
4	5.8	26.3
U	5.8	26.3
E	5.6	26.6

32.07

100' 50 of La Playa

E	5.6	26.5
CL	5.8	26.3
b	5.7	26.4
C	5.9	26.2
4	5.9	26.2
U	6.1	26.0
W	6.2	25.8
150' 50		
W	6.4	25.7
CL	6.3	25.8
4	6.4	25.7
C	6.2	25.9
4	6.1	26.0
CL	5.9	26.2
E	5.7	26.2

Merced

200' 50

31

E	6.1	26.0
U	6.2	25.9
4	6.3	25.8
C	6.5	25.6
4	6.5	25.6
U	6.3	25.8
W	6.4	25.7
250' 50		
W	6.8	25.3
U	6.8	25.3
4	6.7	25.4
C	6.6	25.5
4	6.4	25.7
U	6.5	25.6
E	6.3	25.8

300 So of La Playa

E	6.6	25.5
U	6.8	25.3
4	6.7	25.2
C	6.8	25.3
4	6.9	25.2
U	6.7	25.4
W	6.8	25.3
350 So		
N	6.8	25.3
U	7.0	25.1
4	7.2	24.9
C	6.9	25.2
4	6.9	25.2
U	6.9	25.2
E	6.7	25.4

400 So

E	7.1	25.0
U	7.2	24.9
4	7.1	25.0
C	7.1	25.0
7	7.0	25.1
U	6.9	25.2
W	7.1	25.0
450 So		
U	7.2	24.9
U	7.0	25.1
4	7.4	24.7
U	7.5	24.6
4	7.3	24.8
U	7.4	24.7
E	7.3	24.8

32.07

33

66

500' So of La Playa

E	7.7	24.4
U	7.6	24.5
4	7.5	24.7
C	7.5	24.6
4	7.3	24.8
U	7.3	24.8
W	6.9	25.2

559'50" = End of St.

W	7.1	25.0
U	7.4	24.7
4	7.5	24.6
C	7.5	24.6
4	7.7	24.4
U	7.9	24.2
E	8.3	23.8

Cross-Section of Yosemite St.

32.07
 50 End of St. 500' So of La Playa.

E	4.2	27.9
U	4.1	28.0
4	3.8	28.3
U	3.7	28.4
4	3.3	28.8
U	3.5	28.6
W	3.1	29.0

500' So La Playa

W	3.7	28.4
4	3.8	28.3
4	4.0	28.1
U	4.1	28.0
4	4.2	27.9
U	4.5	27.6
E	4.6	27.5

450' So

E	4.6	27.5
U	4.5	27.6
4	4.4	27.7
U	4.4	27.7
4	4.3	27.8
U	4.1	28.0
W	3.9	28.2

400' So

W	3.5	28.6
U	3.7	28.4
4	4.1	28.0
U	4.3	27.8
4	4.4	27.7
U	4.4	27.7
E	4.6	27.5

3207

350' So of La Playa

E	4.1	28.0
U	3.9	27.2
4	3.8	28.3
C	3.5	28.6
4	3.5	28.6
U	3.5	28.6
W	3.4	28.7

300' So

W	3.0	29.1
U	2.9	29.2
4	3.0	29.1
C	3.1	29.0
4	3.4	28.7
U	3.5	28.6
E	3.6	28.5

Yosemite

250' So

E	3.7	28.4
U	3.2	28.9
4	3.3	28.8
C	3.0	29.1
4	3.2	28.9
U	3.1	29.0
W	3.2	28.9

200' So

W	4.0	28.1
U	3.6	28.5
4	3.4	28.7
C	3.4	28.7
4	3.4	28.7
U	3.3	28.8
E	3.4	28.7

150' S. of La Playa

E	4.0	28.1
U	4.1	28.0
4	4.1	28.0
C	4.2	27.9
4	4.8	27.3
U	5.2	26.9
W	6.0	26.1

100' S.

W	6.0	25.7
U	{ 6.4 7.0	{ 25.7 25.7
4	6.0	25.7
C	6.1	26.0
4	5.9	26.2
U	5.6	26.5
E	5.1	27.0

50' S.

E	6.8	25.3
U	6.8	25.3
4	6.8	25.3
C	6.6	25.5
4	6.9	25.2
U	{ 7.4 6.7	{ 24.7 25.4
W	6.6	25.5

3. line La Playa.

W	6.1	26.0
U	{ 6.5 7.3	{ 25.6 24.8
4	7.2	24.9
C	7.1	25.0
4	7.4	24.7
U	7.4	24.7
E	7.8	24.3

TP 6.54 30.85 7.76 24.31

alt. Am
rt. 31.2

30.85

No. line La Playa

E	7.1	23.8
A	6.4	24.5
U	6.2	24.7
C	5.8	25.1
U	5.7	25.2
U	5.4	25.5
W	4.9	26.0

50 No.

W	4.6	26.3
U	5.4	25.5
U	5.7	25.2
C	5.9	25.0
U	6.4	24.5
U	6.7	24.2
E	7.3	23.6

Yosemite.

150 No

E	7.4	23.5
U	6.9	24.0
U	6.7	24.2
C	6.1	24.8
U	5.8	25.1
U	5.4	25.5
W	4.9	26.0

150 No

W	4.9	26.0
A	5.8	25.1
U	6.1	24.8
C	6.2	24.7
U	6.7	24.2
U	7.1	23.8
E	7.6	23.3

200 No of La Playa.

E	7.5	23.4
U	7.2	23.7
U	6.9	24.0
C	6.4	24.5
U	6.2	24.7
U	5.9	25.0
W	5.2	25.7

250 No

W	5.1	25.8
U	5.9	25.0
U	6.2	24.7
C	6.2	24.7
U	6.8	24.1
U	7.0	23.9
E	7.2	23.7

300 No

E	7.1	23.8
U	6.6	24.3
U	6.5	24.4
C	6.1	24.8
U	5.8	25.1
U	5.2	25.5
W	4.9	26.0

350 No

W	5.7	26.2
U	5.1	25.8
U	5.3	25.6
C	5.9	25.0
U	6.2	24.7
U	6.5	24.4
E	5.7	24.2

30.85

400 ft

E	6.2	24.7
U	5.9	25.0
4	5.9	25.0
6	5.5	25.4
7	5.3	25.6
U	4.9	26.8
W	4.5	26.4

450 ft

W	4.1	26.5
U	4.7	26.2
4	4.9	26.0
U	5.0	25.9
4	5.3	25.6
4	5.3	25.6
E	5.5	25.4

Yosemite.

500 ft

E	4.8	26.1
U	4.7	26.2
4	4.3	26.6
U	3.9	27.0
U	4.3	26.6
U	4.0	26.9
W	3.3	27.6

550 ft

W	3.0	27.9
U	3.4	27.5
4	3.4	27.5
U	3.5	27.4
4	3.6	27.3
U	3.9	27.0
E	3.9	27.0

600 No. 5L. Roosevelt

E		3.2	27.7	
U		3.1	27.8	
U		3.0	27.9	
C		2.8	28.1	
4		3.0	27.9	
U		2.8	28.1	
W		2.5	28.4	
TR.	11.47	38.90	3.22	27.60

No. 1100 Roosevelt.

W		9.8	29.1
U		10.1	28.8
4		10.2	28.7
C		10.3	28.6
4		10.3	28.6
U		10.3	28.6
E		10.5	28.4

50 No

E		10.2	28.7
U		10.0	28.9
4		10.0	28.9
C		9.6	29.3
4		9.7	29.2
U		9.7	29.2
W		9.5	29.4

100 No

W		9.3	29.6
U		9.6	29.3
4		9.6	29.3
C		9.7	29.2
U		9.8	29.1
U		9.8	29.1
E		9.9	29.0

38.90

150 No. of Personnel.

E	9.7	29.2
U	9.5	29.4
Y	9.5	29.4
L	9.4	29.5
4	9.2	29.7
U	9.2	29.7
W	8.9	30.0

200 No.

W	8.3	30.6
U	8.7	30.2
4	8.9	30.0
L	9.0	29.9
4	9.0	29.9
U	9.3	29.6
E	9.5	29.4

Yosemite.

41

250 No

E	8.9	30.0
U	8.4	30.5
4	8.3	30.6
C	8.4	30.5
4	8.2	30.7
U	7.8	31.1
W	7.5	31.4

300 No

W	6.6	32.3
U	7.2	31.7
4	7.5	31.4
C	7.6	31.3
4	7.7	31.2
U	8.0	30.9
E	8.2	30.7

3190

377 No

E	7.2	31.7
U	6.9	32.0
L	6.7	32.2
C	6.6	32.3
L	6.3	32.6
U	5.9	33.0
W	5.6	33.3

400 No

W	4.5	34.4
U	5.0	33.9
L	5.4	33.5
C	5.3	33.6
L	5.8	33.1
U	6.0	32.9
E	6.4	32.5

42

450 No

E	5.2	33.7
U	5.0	33.9
L	4.8	34.1
C	4.3	34.6
L	4.4	34.5
U	4.0	34.9
W	3.5	35.4

500 No

W	4.7	36.2
U	3.1	35.8
L	3.3	35.6
C	3.2	35.7
L	3.7	35.2
U	3.9	35.0
E	4.1	34.8

3890

E

500 No. 1 Roosevelt.

E

3.2 35.7

U

2.8 36.1

4

2.6 36.3

C

2.4 36.5

4

2.1 36.7

U

1.8 37.1

W

1.4 37.5

600 No. 32 Sunset

W

0.2 38.5

U

0.7 38.2

4

1.0 37.9

C

1.2 37.7

4

1.3 37.6

U

1.2 37.6

E

1.8 37.1

TP

9.62 48.09 0.43 38.47

Yosemite

43

No. 1190 Sunset

E

9.3 38.8

U

9.1 39.0

4

8.8 39.3

C

8.6 39.5

4

8.4 39.7

U

8.3 39.8

W

8.0 39.1

20' No.

W

7.4 40.7

U

7.7 40.4

4

8.0 40.1

C

8.0 40.1

4

8.3 39.8

U

8.6 39.5

E

8.6 39.5

48.00

75 No Sunset

E	7.8	40.3
U	7.5	40.6
4	7.3	40.8
C	7.0	41.7
4	7.0	41.1
U	6.7	41.4
W	6.5	41.6

175 No

W	6.0	42.1
U	6.3	41.8
4	6.5	41.6
C	6.3	41.8
4	6.8	41.3
U	6.9	41.2
E	7.1	41.0

44

175 No

E	6.4	41.7
U	6.4	41.7
4	6.2	41.9
C	5.9	42.2
4	5.9	42.2
U	5.6	42.5
W	5.4	42.7

225 No

W	5.0	43.1
U	5.2	42.9
4	5.6	42.5
C	5.4	42.7
4	5.7	42.4
U	5.8	42.3
E	6.0	42.1

275 No. Sunset.
41.09

E	5.5	42.6
U	5.4	42.7
4	5.2	42.9
C	5.0	43.1
4	5.1	43.0
U	4.8	43.3
W	4.6	43.5

375 No.

W	4.3	43.8
U	4.7	43.4
4	4.8	43.3
C	4.9	43.2
4	5.0	43.1
U	5.1	43.0
E	5.2	42.9

Yosemite.
375 No

45

E	4.9	43.2
U	4.7	43.4
4	4.7	43.4
C	4.6	43.5
4	4.7	43.4
U	4.5	43.6
W	4.3	43.8

475 No.

W	4.3	43.8
U	4.7	43.4
4	4.6	43.5
C	4.5	43.6
E	4.5	43.6
U	4.8	43.3
E	4.8	43.3

4.6.09

475 West Sunset.

E	4.7	43.4
W	4.5	43.6
$\frac{1}{H}$	4.6	43.5
C	4.6	43.5
H	4.7	43.4
Cl	4.6	43.5
W	4.6	43.5

685 No. S. L. Pacific Ave

W	4.7	43.4
Cl	4.7	43.4
H	4.9	43.2
C	4.7	43.4
H	4.6	43.5
Cl	4.4	43.7
E	4.5	43.6

Cross Section at Promontory
Pacific Ave. to End of St.

	45.1	49.82	45.28-29	Feb. 7 Breeds
	St. line Pacific Ave.			
E		3.6	46.2	
Cl		3.2	46.6	
L		2.9	46.9	
C		2.8	47.0	
L		2.5	47.3	
Cl		2.3	47.5	
W		1.7	48.1	
	50 50			
W		3.3	46.5	
Cl		3.7	46.1	
L		3.8	46.0	
C		4.1	45.7	
L		4.3	45.5	
Cl		4.4	45.4	
E		4.6	45.2	

100 50

E	5.2	44.6
Cl	5.2	44.6
L	5.1	44.7
C	5.0	44.5
L	4.8	45.0
Cl	4.7	45.1
N	4.5	45.3
	150 50	
W	5.5	44.3
Cl	5.4	44.4
L	5.5	44.3
C	5.4	44.4
L	5.7	44.1
Cl	5.7	44.1
E	6.7	44.1

49.82

200 So of Pacific Mo

Et		
E	6.0	43.8
Cl	6.0	43.8
4	6.0	43.8
c	6.9	43.9
+	5.9	43.9
u	5.9	43.9
W	5.8	44.0

250 So

W	6.3	43.5
Cl	6.1	43.7
1/8	6.2	43.6
c	6.4	43.4
4	6.4	43.4
u	6.3	43.5
E	6.2	43.6

Promontory

300 So

E	6.4	43.0
Cl	6.6	43.2
4	6.7	43.1
c	6.7	43.1
4	6.6	43.2
u	6.7	43.1
W	6.7	43.1

350 So

W	7.1	42.7
u	7.0	42.8
4	7.2	42.6
c	7.1	42.7
4	7.0	42.8
u	7.0	42.8
E	7.2	42.6

49.12

400' 50" at Pacific Ave

E	6.9	42.9
cl	7.1	42.7
f	7.2	42.6
c	7.3	42.5
lc	7.3	42.5
a	7.3	42.5
w	7.2	42.6

450' 50"

w	7.3	42.5
cl	7.1	42.7
f	7.2	42.6
c	7.0	42.8
f	6.7	43.1
a	6.3	43.5
E	6.2	43.6

Promontory

500' 50"

49

E	4.5	45.3
cl	5.1	44.7
f	5.3	44.2
c	5.6	44.2
u	5.9	43.9
cl	6.2	43.6
N	6.6	43.2

575' 50" N.L. Sunset

w	5.6	44.2
cl	5.7	44.6
f	5.9	44.9
c	5.6	45.2
f	4.4	45.4
a	4.0	45.8
E	3.6	46.2

T.P. 6.19 50.48 5.12 44.26 44.29 am

50.48

Saline Sunset.

E	2.9	47.6
U	3.0	47.5
4	3.2	47.3
0	3.4	47.1
4	3.6	46.9
U	3.7	46.8
W	4.2	46.3

50.50

W	3.8	46.7
U	3.4	47.1
U	3.2	47.3
C	3.2	47.3
U	3.1	47.4
U	2.8	47.7
E	2.7	47.8

Promontory

100.50

E	3.0	47.5
U	3.2	47.3
4	3.2	47.3
0	3.4	47.1
4	3.5	47.0
U	3.5	47.0
W	3.8	46.7

150.50

W	4.0	46.1
U	4.2	46.3
4	4.1	46.4
C	3.8	46.7
4	3.6	46.9
U	3.6	46.9
E	3.5	47.0

50.45

200' 50' at Sunset

E	4.0	44.5
U	4.2	46.3
4	4.5	46.0
U	4.5	46.0
4	4.7	45.8
U	4.8	45.7
W	5.1	45.4

250' 50'

W	4.5	46.0
U	5.3	45.2
4	5.1	45.4
U	4.9	45.6
4	4.8	45.7
U	4.7	45.8
E	4.7	45.8

Promontory

300' 50'

E	5.3	45.2
U	5.5	45.8
4	5.6	44.9
U	5.8	44.7
4	5.9	44.6
U	6.2	44.3
W	6.3	44.2

350' 50'

W	7.2	43.3
U	7.0	43.5
4	6.8	43.7
U	6.6	43.9
U	6.5	44.0
U	6.3	44.2
E	6.2	44.3

50.41

400' Su at sunset

E	7.1	43.4
U	7.5	43.0
L	7.5	43.0
C	7.8	42.7
4	8.0	42.5
U	8.1	42.4
W	8.3	42.2

450' 50

W	9.3	41.2
U	9.3	41.2
4	9.9	41.6
C	10.6	41.9
U	10.7	41.8
U	10.6	41.9
E	10.3	42.2

Promontory

500' 50

E	9.7	40.8
U	9.9	40.6
4	10.0	40.5
C	10.1	40.4
4	10.3	40.2
U	10.2	40.3
W	10.4	40.1

550' 50

W	11.6	38.9
U	11.6	38.9
U	11.5	39.0
C	11.4	39.1
4	11.4	39.1
U	11.2	39.3
E	11.1	39.4

51

SUNB

600' So. - X/L. Roosevelt

E	12.8	37.7
CL	12.7	37.8
4	12.8	37.7
0	12.8	37.7
4	12.8	37.7
CL	12.8	37.7
CL	12.8	37.7

W	0.74	31.41	12.78	37.74	37.67mm
TP					

So. line Roosevelt

W	2.3	36.1
CL	2.6	35.9
4	2.5	35.9
0	3.0	35.4
1/4	3.0	35.4
CL	2.9	35.5
E	3.0	35.4

Promontory

50' So.

E	4.6	33.8
CL	4.2	34.2
4	4.1	34.3
0	4.2	34.2
4	3.9	34.5
CL	3.8	34.6
W	3.3	35.1

100' So

W	4.4	34.0
CL	5.0	33.4
4	5.1	33.3
0	5.4	33.0
4	5.6	32.8
4	5.9	32.5
E	6.7	32.2

28

38.41

150' 50" of Roosevelt

E	7.4	31.0
U	7.0	31.14
4	6.8	31.6
C	6.5	31.9
4	6.4	32.0
U	6.0	32.4
W	5.5	32.9

300' 50"

W	6.5	31.9
U	6.9	31.5
4	7.2	31.2
C	7.6	30.8
4	7.8	30.6
U	7.9	30.5
E	8.4	30.0

Promontory

52

200' 50"

E	9.3	29.1
U	8.8	29.6
4	8.6	29.8
C	8.2	30.2
4	8.1	30.3
U	7.6	30.8
W	7.1	31.3

300' 50"

W	7.7	30.7
U	8.2	30.2
4	8.6	29.8
C	9.1	29.3
4	9.5	28.9
U	9.6	28.8
E	10.1	28.3

38.41
 350' So. of Roosevelt.

E	11.0	27.4
U	10.6	27.5
+	10.1	28.3
C	9.7	28.7
+	9.4	29.0
U	8.9	29.5
W	8.2	30.2

400' So

W	8.7	29.7
U	9.4	29.0
+	9.7	28.7
C	10.1	28.3
+	10.6	27.8
U	11.0	27.4
E	11.7	26.7

Promontory

450' So

53

E	12.4	26.6		
U	11.8	26.6		
+	11.2	27.2		
C	10.6	27.8		
+	10.2	28.2		
U	9.9	28.5		
W	9.1	29.3		
TP	7.62	36.36	9.67	28.74

500' So

W	7.6	28.5
U	8.5	27.9
+	9.0	27.4
C	9.3	27.1
U	9.8	26.6
U	10.2	26.2
E	11.0	25.4

26.36

550' S. of Roosevelt

E	11.2	25.2
cl	10.3	26.1
4	10.0	26.4
C	9.6	26.8
4	9.2	27.2
cl	9.7	27.7
W	7.8	28.6

600' S. of Saline La Playa

W	8.0	28.4
cl	8.9	27.5
4	9.5	26.9
C	9.8	26.6
4	10.3	26.1
cl	10.7	25.7
E	11.5	24.9

Promontory

Saline La Playa

54

E	11.1	25.3
cl	10.5	25.9
4	10.1	26.3
C	9.6	26.8
4	9.0	27.4
cl	8.7	27.7
W	8.0	28.4

600' S.

W	7.8	28.6
cl	8.4	28.0
4	8.8	27.6
C	9.3	27.1
4	9.7	26.7
cl	10.1	26.3
E	10.8	25.6

36.36

68

100' 50 at La Playa.

E	10.1	26.3
U	9.7	26.7
U	9.2	27.2
C	8.9	27.5
U	8.6	27.8
U	8.2	28.2
W	7.8	28.6

100' 50

W	7.3	29.1
U	8.0	28.4
U	8.6	27.8
C	8.8	27.6
U	9.0	27.4
U	9.3	27.1
E	9.7	26.7

200' 50

55

E	9.4	27.0
U	8.7	27.7
U	8.5	27.9
C	8.3	28.1
U	8.1	28.3
U	7.6	28.8
W	7.1	29.3

200' 50

W	6.7	29.7
U	7.2	29.2
U	7.3	29.1
C	7.6	28.8
U	7.9	28.5
U	8.3	28.1
E	8.6	27.8

36.36

08

300 50 of La Playa

E	7.5	28.9
U	7.1	29.3
L	6.9	29.5
C	6.5	29.9
U	6.5	29.9
U	6.2	30.2
W	5.9	30.5

350 50

W	5.7	31.0
U	5.2	31.2
U	5.6	30.8
C	5.8	30.6
U	6.2	30.2
U	6.3	30.1
E	6.8	29.6

400 50

56

E	5.7	30.7
U	5.0	31.4
L	4.9	31.5
C	4.6	31.8
U	4.2	32.2
U	4.1	32.3
W	3.6	32.8

450 50

W	2.3	34.1
U	2.6	33.8
U	3.1	33.3
C	3.1	32.8
L	4.0	32.4
U	4.1	32.3
E	4.6	31.8

	36.36		
16	500.50	at La Playa	
E		3.5	32.9
U		2.9	33.5
$\frac{1}{2}$		2.5	33.9
C		2.0	34.4
$\frac{1}{4}$		1.6	34.8
U		1.3	35.1
W		0.7	35.7
T.P.	5.25	40.64	0.95
	562.51	End of St.	35.41
W		3.4	37.2
U		4.1	36.5
W		4.4	36.2
C		4.6	36.0
$\frac{1}{4}$		4.8	35.8
U		5.5	35.1
E		6.3	34.3

Cross-Section of Alta Vista St.
Pacific to End of St.

	11.51	38.57 No. 11m	27.06 1/2m La Playa - 600' So. Roosevelt	
W			10.5	28.1
U			9.9	28.7
S			9.6	29.0
U			9.1	29.5
4			8.7	29.9
U			8.6	30.0
E			8.0	30.6

572' So. of Roosevelt - End of St.

E			7.9	30.7
U			8.1	30.5
4			8.4	30.2
c			8.9	29.7
4			9.3	29.3
U			9.6	29.0
W			10.2	28.4

Note - Alta Vista St. does not intersect with La Playa but stops
at 572' So. of Roosevelt or 28' No. of La Playa - but X section is taken
at La Playa So grade can be established at this point as shown to extended
in this note future

500' So. of Roosevelt.

W			9.8	28.8
U			9.0	29.6
U			8.7	29.9
c			8.4	30.2
4			8.0	30.6
U			7.7	30.9
E			7.4	31.2

500' So.

U			6.4	32.2
U			6.7	31.9
4			7.1	31.5
c			7.5	31.1
4			7.9	30.7
U			8.1	30.5
W			8.9	29.7

58

31.57

4.50' So of Penscott

W	7.9	30.7
U	6.9	31.7
4	6.8	31.8
C	6.5	32.2
4	6.2	32.4
U	6.0	32.6
E	5.4	33.2

400' S.

E	4.7	33.9
U	5.2	33.4
4	5.4	33.2
C	5.6	33.0
4	6.0	32.6
U	6.5	32.1
W	7.1	31.5

Alta Vista

59

350' S.

W	6.2	32.4
U	5.6	33.0
4	5.2	33.4
C	4.8	33.8
4	4.7	33.9
U	4.8	33.8
E	4.1	34.5

300' S.

E	3.6	35.2
U	3.7	34.9
4	4.0	34.6
C	4.2	34.4
4	4.4	34.2
U	4.8	33.8
W	5.1	33.5

4563

50' S. of Roosevelt.

W	7.1	38.5
U	6.4	39.2
4	6.2	39.4
C	5.9	39.7
4	5.7	39.8
U	5.7	39.9
E	5.6	40.0

S. L. Roosevelt

E	5.0	40.6
U	5.1	40.5
4	5.2	40.4
C	5.3	40.3
4	5.5	40.1
U	5.7	39.9
W	6.3	39.3

Alta Vista

No line Roosevelt

W	6.8	38.8
U	6.0	39.6
4	5.1	40.2
C	5.2	40.4
4	4.9	40.7
U	4.5	41.1
E	4.5	41.1

50' No

E	4.3	41.3
U	4.8	40.8
4	4.8	40.8
C	5.2	40.2
4	5.9	39.7
U	6.4	39.2
W	7.6	38.0

45.63

100 No. of Roosevelt

W	9.0	36.6
U	7.3	38.3
F	6.5	39.1
C	6.0	39.6
Y	5.5	40.1
U	4.8	40.8
E	4.2	41.4

150 No

E	5.9	40.7
U	5.4	40.2
F	5.9	39.7
C	6.5	39.1
F	7.5	38.1
U	6.3	37.3
W	10.2	35.4

Alta Vista

62

200 No

W	11.2	34.4
U	9.2	36.4
F	8.4	37.2
C	7.1	38.5
U	6.2	39.4
U	5.5	40.1
E	4.8	40.8

50 No

E	5.1	40.5
U	6.4	39.2
F	7.2	38.4
C	8.2	37.4
F	9.1	36.5
U	10.2	35.4
W	12.3	33.3

45763

300 No of Roosevelt

W	12.8	32.8
U	10.3	35.3
+	9.2	36.4
C	8.1	37.5
+	7.4	38.2
U	6.4	39.2
E	5.3	40.3

350 No

E	5.1	48.5
U	6.2	39.4
+	7.4	38.2
C	8.5	37.1
+	9.6	36.0
U	11.0	34.6
W	12.7	32.9

Alta Vista

400 No

W	12.2	33.4
U	10.3	35.3
+	9.4	36.2
C	8.0	37.6
+	7.0	38.6
U	6.0	39.6
E	5.1	40.5

450 No

E	5.1	40.6
U	6.4	39.2
+	7.6	38.0
C	8.3	37.3
+	9.1	36.8
U	10.0	35.6
W	11.8	34.1

4563

570 N. of Roosevelt

W	10.5	35.1
cl	9.0	36.6
+	8.1	37.5
C	7.6	38.0
+	7.0	38.6
cl	6.5	39.1
E	5.7	39.9

550 N.

E	5.3	40.3
cl	6.1	39.5
+	6.5	39.1
C	6.9	38.7
+	7.4	38.2
cl	8.2	37.4
W	9.1	36.5

Alta Vista

600 N. of S.L. Sunset

64

W	7.4	38.2
cl	6.5	39.2
+	5.9	39.7
C	5.2	40.4
+	4.8	40.8
cl	4.5	41.1
E	4.1	41.5

N.L. Sunset

E	2.3	43.3
cl	2.6	43.0
+	2.8	42.8
C	3.0	42.6
+	3.4	42.2
cl	4.0	41.6
W	4.9	40.7

TP	10.56	51.25	4.95	40.68	41.69
----	-------	-------	------	-------	-------

5625

25 N. at Sunset

W	9.9	41.4
U	9.0	42.3
4	8.5	42.8
C	8.0	43.3
4	7.9	43.4
U	7.7	43.6
E	7.1	44.2

75 N.

E	6.4	44.9
U	6.4	44.9
4	6.7	44.6
C	7.0	44.3
4	7.4	43.9
U	8.0	43.3
W	8.7	42.6

Alta Vista

155 N.

65

W	7.7	43.6
U	7.0	44.3
4	6.6	44.7
C	6.1	45.2
4	5.9	45.4
U	5.6	45.7
E	5.7	45.6

175 N.

E	5.1	46.2
U	5.1	46.2
4	5.4	45.9
C	5.6	45.7
4	5.9	45.4
U	6.2	45.1
W	6.7	44.6

40

51.25

275 No of Sunset

W	6.0	45.3
U	5.2	46.1
4	4.9	46.4
C	4.7	46.6
4	4.5	46.9
U	4.5	46.8
E	4.4	46.9

275 No

E	3.4	47.7
U	3.4	47.9
4	3.5	47.8
C	3.5	47.8
4	3.7	47.6
U	4.1	47.2
W	4.8	46.5

Alta Vista.

375 No

66

W	3.0	47.3
U	2.5	48.8
4	2.3	49.0
C	2.1	49.2
4	1.9	49.4
U	2.0	49.3
E	2.1	49.2

71 8.60 58.60 1.21 00.04
375 No

E	7.0	51.6
U	7.0	51.6
4	7.3	51.3
C	7.4	51.2
4	7.7	50.9
U	7.9	50.7
W	8.4	50.2

57.6 V

455 No. of Sunset

W	6.8	51.8
U	6.3	52.3
V	5.9	52.7
C	5.6	53.0
L	5.4	53.2
U	5.2	53.4
E	5.4	53.2

475 N.

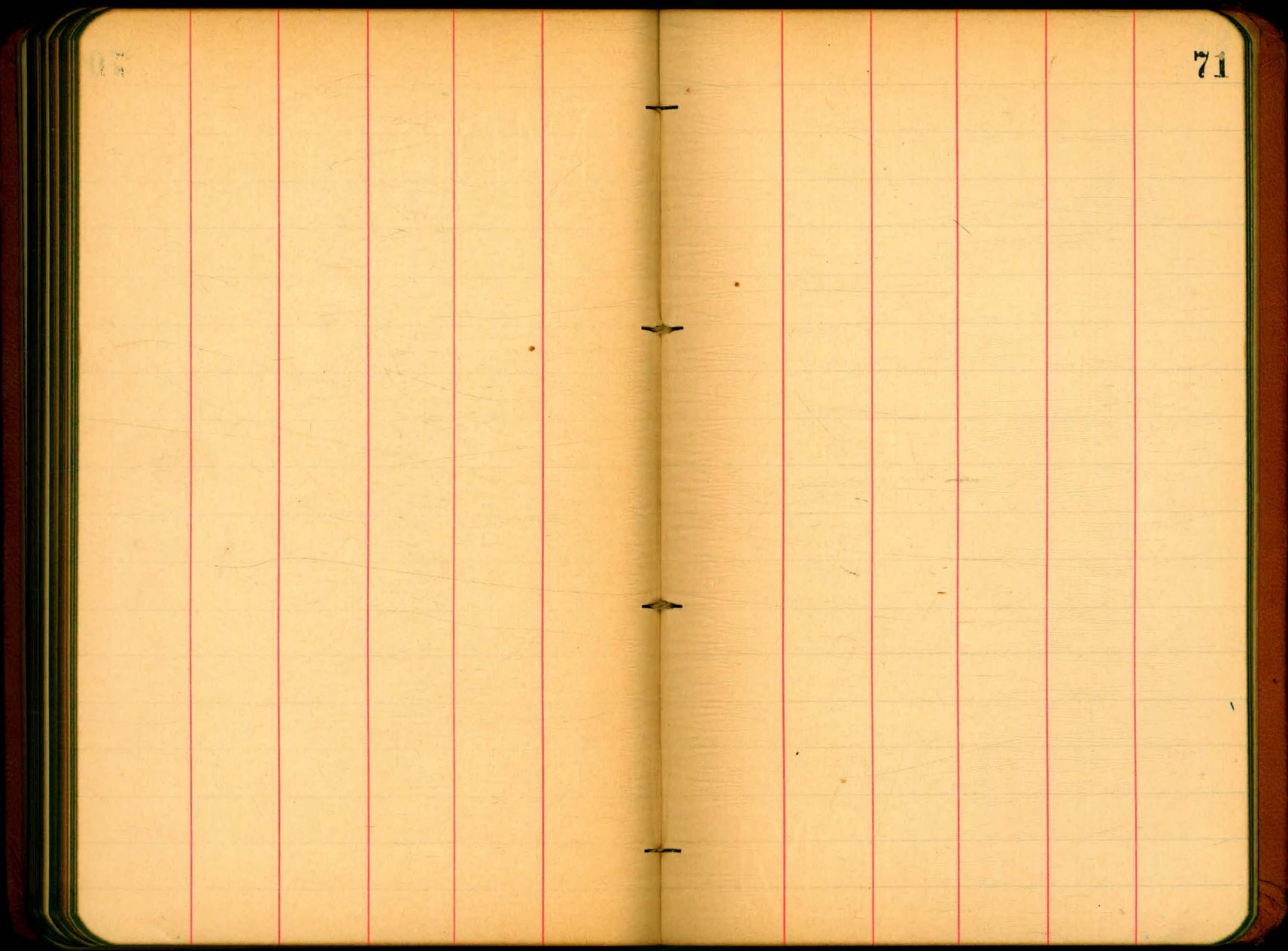
E	3.6	55.0
U	3.9	54.7
V	4.0	54.6
C	4.4	54.2
L	4.6	54.1
d	5.1	53.5
N	6.1	52.5
Bm Mt SW Pacific	6.01	52.63

Alta Vista

575 No. S.L. Pacific

67

W	6.0	52.6
U	4.9	53.7
V	4.4	54.2
C	3.9	54.7
L	3.5	55.1
U	2.9	55.7
E	2.7	55.9

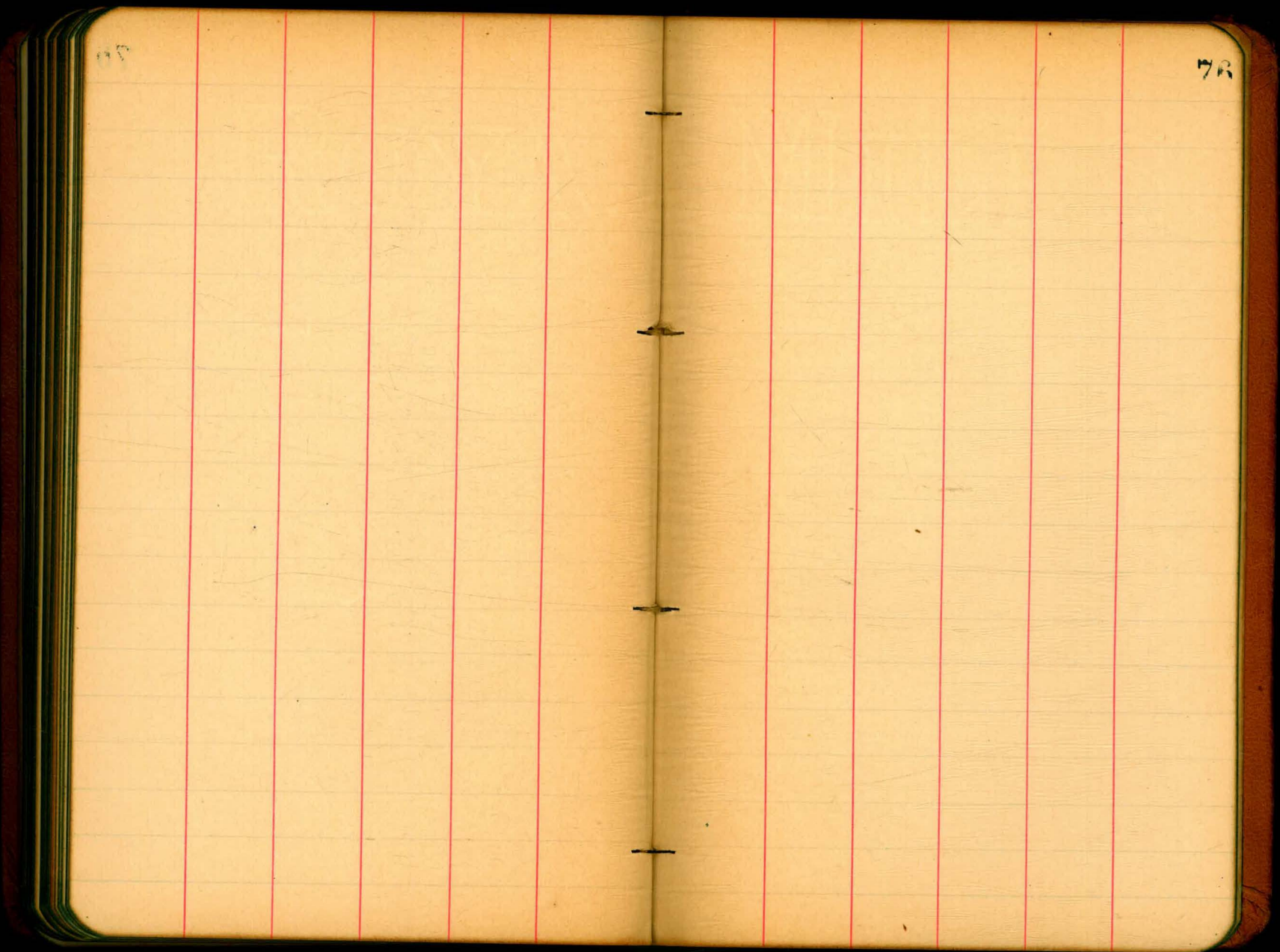


70

71

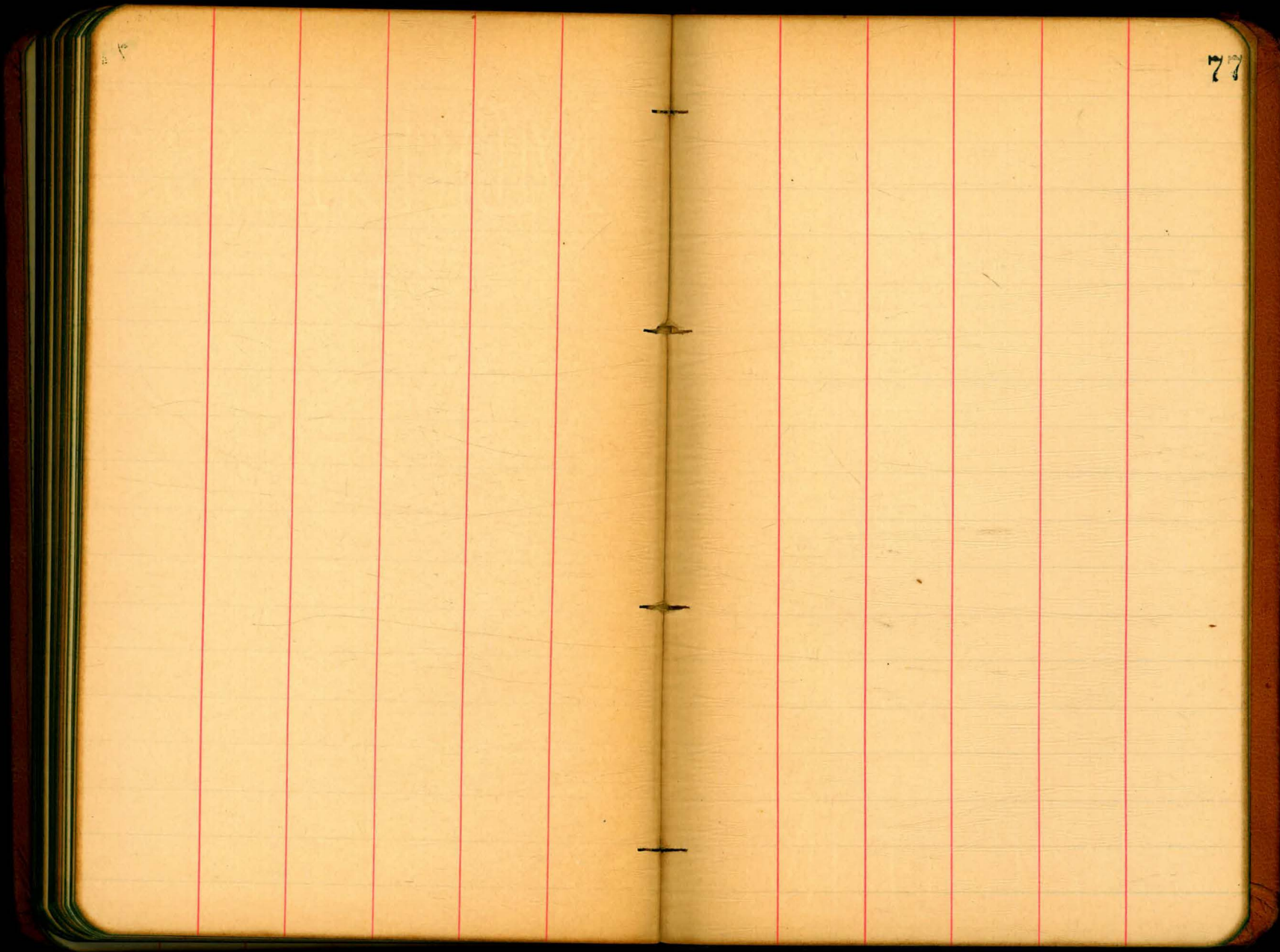
81

72



67

78



76

77

133.75
 133
 10.75
 6.60
 2.60
 133
 11.17
 136.42
 75
 11.36
 75
 75
 6.13
 12.2
 17.5
 30.15
 16.17
 48.32
 66.49
 18.17
 84.66
 102.63
 30.15
 122.98
 22
 11.0
 112.75
 15
 38.52
 2.12
 40.64
 3.89
 36.75
 30.04
 181
 37.99
 37.85
 527
 20.02
 26.58
 40.64
 10.60
 30.04
 15.86
 9.57
 26.43
 35.00
 9.57
 44.57
 54.14
 15.86
 71.00

Return to City Engineers Office
 City Hall, San Diego, Cal.
 DISTANCES FROM CENTER OF ROADWAY FOR CROSS-SECTIONING.

FOR SINGLE TRACK EMBANKMENT.
 ROADWAY 14 FEET WIDE. SIDE SLOPES 1 1/2 TO 1.

	0	.1	.2	.3	.4	.5	.6	.7	.8	.9	
0	7.0	7.2	7.3	7.5	7.6	7.8	7.9	8.1	8.2	8.4	0
1	8.5	8.7	8.8	9.0	9.1	9.3	9.4	9.6	9.7	9.9	1
2	10.0	10.2	10.3	10.5	10.6	10.8	10.9	11.1	11.2	11.4	2
3	11.5	11.7	11.8	12.0	12.1	12.3	12.4	12.6	12.7	12.9	3
4	13.0	13.2	13.3	13.5	13.6	13.8	13.9	14.1	14.2	14.4	4
5	14.5	14.7	14.8	15.0	15.1	15.3	15.4	15.6	15.7	15.9	5
6	16.0	16.2	16.3	16.5	16.6	16.8	16.9	17.1	17.2	17.4	6
7	17.5	17.7	17.8	18.0	18.1	18.3	18.4	18.6	18.7	18.9	7
8	19.0	19.2	19.3	19.5	19.6	19.8	19.9	20.1	20.2	20.4	8
9	20.5	20.7	20.8	21.0	21.1	21.3	21.4	21.6	21.7	21.9	9
10	22.0	22.2	22.3	22.5	22.6	22.8	22.9	23.1	23.2	23.4	10
11	23.5	23.7	23.8	24.0	24.1	24.3	24.4	24.6	24.7	24.9	11
12	25.0	25.2	25.3	25.5	25.6	25.8	25.9	26.1	26.2	26.4	12
13	26.5	26.7	26.8	27.0	27.1	27.3	27.4	27.6	27.7	27.9	13
14	28.0	28.2	28.3	28.5	28.6	28.8	28.9	29.1	29.2	29.4	14
15	29.5	29.7	29.8	30.0	30.1	30.3	30.4	30.6	30.7	30.9	15
16	31.0	31.2	31.3	31.5	31.6	31.8	31.9	32.1	32.2	32.4	16
17	32.5	32.7	32.8	33.0	33.1	33.3	33.4	33.6	33.7	33.9	17
18	34.0	34.2	34.3	34.5	34.6	34.8	34.9	35.1	35.2	35.4	18
19	35.5	35.7	35.8	36.0	36.1	36.3	36.4	36.6	36.7	36.9	19
20	37.0	37.2	37.3	37.5	37.6	37.8	37.9	38.1	38.2	38.4	20
21	38.5	38.7	38.8	39.0	39.1	39.3	39.4	39.6	39.7	39.9	21
22	40.0	40.2	40.3	40.5	40.6	40.8	40.9	41.1	41.2	41.4	22
23	41.5	41.7	41.8	42.0	42.1	42.3	42.4	42.6	42.7	42.9	23
24	43.0	43.2	43.3	43.5	43.6	43.8	43.9	44.1	44.2	44.4	24
25	44.5	44.7	44.8	45.0	45.1	45.3	45.4	45.6	45.7	45.9	25
26	46.0	46.2	46.3	46.5	46.6	46.8	46.9	47.1	47.2	47.4	26
27	47.5	47.7	47.8	48.0	48.1	48.3	48.4	48.6	48.7	48.9	27
28	49.0	49.2	49.3	49.5	49.6	49.8	49.9	50.1	50.2	50.4	28
29	50.5	50.7	50.8	51.0	51.1	51.3	51.4	51.6	51.7	51.9	29
30	52.0	52.2	52.3	52.5	52.6	52.8	52.9	53.1	53.2	53.4	30
31	53.5	53.7	53.8	54.0	54.1	54.3	54.4	54.6	54.7	54.9	31
32	55.0	55.2	55.3	55.5	55.6	55.8	55.9	56.1	56.2	56.4	32
33	56.5	56.7	56.8	57.0	57.1	57.3	57.4	57.6	57.7	57.9	33
34	58.0	58.2	58.3	58.5	58.6	58.8	58.9	59.1	59.2	59.4	34
35	59.5	59.7	59.8	60.0	60.1	60.3	60.4	60.6	60.7	60.9	35
36	61.0	61.2	61.3	61.5	61.6	61.8	61.9	62.1	62.2	62.4	36

Calculated by Julien A. Hall, M. Am. Soc. C. E.