

400
LEVEL
F.B. 292

*Return to City Engineers Office
City Hall, San Diego, Cal.*

Table showing the difference of latitude and departure in running 80 chains at any course from 1 to 60 minutes.

MINUTES	LKS.	MINUTES	LKS.	MINUTES	LKS.
1.....	2 $\frac{1}{3}$	21.....	49	41.....	95 $\frac{2}{3}$
2.....	4 $\frac{2}{3}$	22.....	51 $\frac{1}{3}$	42.....	98
3.....	7	23.....	53 $\frac{2}{3}$	43.....	100 $\frac{1}{3}$
4.....	9 $\frac{1}{3}$	24.....	56	44.....	102 $\frac{2}{3}$
5.....	11 $\frac{2}{3}$	25.....	58 $\frac{1}{3}$	45.....	105
6.....	14	26.....	60 $\frac{2}{3}$	46.....	107 $\frac{1}{3}$
7.....	16 $\frac{2}{3}$	27.....	63	47.....	109 $\frac{2}{3}$
8.....	18 $\frac{1}{3}$	28.....	65 $\frac{1}{3}$	48.....	112
9.....	21	29.....	67 $\frac{2}{3}$	49.....	114 $\frac{1}{3}$
10.....	23 $\frac{1}{3}$	30.....	70	50.....	116 $\frac{2}{3}$
11.....	25 $\frac{2}{3}$	31.....	72 $\frac{1}{3}$	51.....	119
12.....	28	32.....	74 $\frac{2}{3}$	52.....	121 $\frac{1}{3}$
13.....	30 $\frac{1}{3}$	33.....	77	53.....	123 $\frac{2}{3}$
14.....	32 $\frac{2}{3}$	34.....	79 $\frac{1}{3}$	54.....	126
15.....	35	35.....	81 $\frac{2}{3}$	55.....	128 $\frac{1}{3}$
16.....	37 $\frac{1}{3}$	36.....	84	56.....	130 $\frac{2}{3}$
17.....	39 $\frac{2}{3}$	37.....	86 $\frac{1}{3}$	57.....	133
18.....	42	38.....	88 $\frac{2}{3}$	58.....	135 $\frac{1}{3}$
19.....	44 $\frac{1}{3}$	39.....	91	59.....	137 $\frac{2}{3}$
20.....	46 $\frac{2}{3}$	40.....	93 $\frac{1}{3}$	60.....	140

292

TABLE FOR RUNNING ON SLOPES.

In the following table the first column shows the angle, the second the number of links to be added to a chain on the slopes, to make one chain, horizontal measurement.

Angle	Cor. in Links	Angle	Cor. in Links	Angle	Cor. in Links	Angle	Cor. in Links
°		°		°		°	
4	0.24	11	1.88	18	5.14	25	10.54
5	0.38	12	2.24	19	5.76	26	11.26
6	0.55	13	2.63	20	6.42	27	12.24
7	0.76	14	3.06	21	7.11	28	13.37
8	0.98	15	3.53	22	7.85	29	14.34
9	1.24	16	4.02	23	8.64	30	15.47
10	1.55	17	4.56	24	9.47	35	22.07

*Return to City Engineers Office
City Hall, San Diego, Cal.*

Index

Xsec. Narragansett - Freude-Guizot	1
Xsec Bacon Pacific - Santa Monica	5
Xsec Niagara - Ocean - Freude	23
Xsec Meade - Park - Georgia	44
Xsec 31 st St. G-I	49
Xsec Sicard St 26 $\frac{1}{2}$ to S.H. Bay	60
Xsec Langley N.L. K St - P.L. North	76

Benches in Ocean Beach

139.82	Hub	NE	ben Santa Cruz	6th
43.04	"	NE	"	4th
29.04	"	SW	"	3d
28.56	"	NE	"	2nd
20.58	"	NE	Haragansett	2nd
31.07	"	NE	"	4
145.26	"	NE	"	6th
12.70	"	"	Haragans	2nd
26.45	"	"	"	4th
59.49	"	SW	"	5th

Cross-section of Narragansett
St. continued from Book

POSTED

16470

2

Bm 738 15264 14526 ^{inches} 60

50' S of Froude St

E2 00 152.60

bb 0.2 152.4

4 0.8 151.8

b 2.2 150.3

4 3.4 149.2

bb 4.7 147.9

W2 6.0 146.6

100' S of Froude St

W2 2.1 149.5

bb 1.4 151.2

4 0.3 152.3

TP 1250 16474 0.40 152.24

b 11.4 153.3

4 9.8 154.9

bb 8.5 156.2

E2 7.7 157.3

150' S of Froude St

E2 5.1 159.6

bb 6.5 158.2

4 7.4 157.3

b 8.3 156.4

4 9.2 155.5

bb 9.6 155.1

W2 9.7 155.0

200' S of Froude St

W2 2.6 162.1

bb 3.0 161.7

4 3.6 161.1

b 3.0 161.7

4 2.6 162.1

bb 1.9 162.8

E2 1.2 163.5

TP 1249 175.99 1.24 163.50

175.99

250' Sof Grande St

E2 6.7 169.3

bl 7.7 168.3

y 8.4 167.6

t 7.3 168.7

y 5.6 170.4

bl 5.0 171.0

W2 4.3 171.7

TP 12.05 187.10 300' Sof Grande St 0.94 175.85

W2 8.6 178.5

bl 8.8 178.3

y 9.4 177.7

t 9.5 177.6

y 9.2 177.9

bl 9.0 177.8

E2 9.8 177.3

187.10

350' Sof Grande St

E2 3.0 184.1

bl 2.8 184.3

y 2.8 184.3

t 2.9 184.2

y 3.3 183.8

bl 3.0 184.1

W2 1.0 186.1

TP 12.05 198.62 0.90 186.20

400' Sof Grande

W2 6.5 192.1

bl 6.9 191.7

y 7.9 190.7

t 8.2 190.4

y 8.4 190.2

bl 8.8 189.8

E2 8.9 189.7

3

19862

450' S of Front St

E2 52 193.4

bl 41 194.5

4 32 195.4

6 28 195.8

4 23 196.3

bl 19 196.7

W2 15 197.1

7P 909 20685 086 197.76

500' S of Front St

W2 72 199.7

bl 77 199.2

4 80 198.9

6 85 198.4

7 90 197.9

bl 93 197.6

E2 101 196.8

20685

POSTED

4

550' S of Front St

E2 75 199.4

bl 72 199.7

4 69 200.0

6 64 200.5

4 62 200.7

bl 57 201.2

W2 55 201.4

600' S of Front St = End

W2 38 203.1

bl 42 202.7

4 46 202.3

6 48 202.1

4 51 201.8

bl 53 201.6

E2 57 201.28

NE Hill
end of
meadow

Cross-section of Bacon St (60')

Ocean Beach

POSTED

5008

5

					50' E of Pacific St	
Bm	11.27	39.63	2836	Santa Cruz 2nd Hill	nl	49.1
TP	10.93	50.04	0.78	3915	bl	48.7
W	W	line of Pacific St (80)			4	47.1
Sl		31	47.0		bl	47.1
bl		32	46.9		4	46.9
14		28	47.0		bl	46.9
b		25	47.6		Sl	46.4
4		33	46.8			
					100' E of Pacific St	
bl		20	48.1		Sl	44.5
tr		34	44.7		bl	45.3
nl		9.2	48.9			
					20' E of Pacific St	
nl		5.5	44.6		4	45.3
					b	45.5
					25' E of Pacific St	
nl		11	49.1		4	45.3
					7.5	45.6
					7.5	47.5
bl		18	48.3		bl	47.9
+4		2.6	47.5			
bl		3.0	47.1		nl	48.4
b		2.6	47.5			

150' E of Pacific W

R2	45	45.6
bb	53	44.8
⁺⁴ +4	52	44.9
	73	42.8
4	77	42.4
6	76	42.5
4	75	42.6
bb	79	42.2
SL	87	41.4

200' E of Pacific

R2	90	41.1
bb	97	40.4
⁺⁴ +4	100	40.1
	11.6	38.5
4	11.6	38.5
6	11.4	38.7
4	11.6	38.5
bb	127	37.4
SL	137	36.4

TP

237 4021 12.24 3784

250' E of Pacific W

SL	80	32.2
bb	72	33.0
4	52	35.0
6	52	35.0
4	53	34.9
bb	37	36.8
R2	1.0	39.2

300' E - W of Santa Cruz W

R2	46	35.6
bb	65	33.7
4	85	31.7
6	87	31.5
4	87	31.5
bb	105	29.7
SL	112	29.0
TP	189 30.06 11.84 2837	

13m

3006

E of Santa Cruz st

rd	1.7	28.4
lh	2.0	28.1
y.	2.5	27.6
b	2.3	27.8
y	2.7	27.4
lh	3.2	26.8
SL	3.4	26.7

50' E of Santa Cruz st

SL	4.3	25.8
lh	4.3	25.8
y	4.1	26.0
b	3.7	26.4
y	4.2	25.9
lh	3.7	26.4
rd	2.3	27.8

3006

7

100' E of Santa Cruz st

rd	4.6	25.5
lh	4.7	25.4
y	5.2	24.9
b	4.6	25.5
y	4.8	25.3
lh	4.6	25.5
SL	4.7	25.4

100' E of Santa Cruz st

SL	5.0	25.1
lh	5.0	25.1
y	5.3	24.8
b	4.6	25.5
y	5.0	25.1
lh	4.6	25.5
rd	4.6	25.5

3006

160' E of Santa Cruz st

rs	52	24.9
bl	52	24.9
y	54	24.7
l	47	25.4
y	51	25.0
bl	50	25.1
rs	48	25.3

200' E of Santa Cruz st

rs	48	25.3
bl	50	25.1
y	53	24.8
l	47	25.4
y	54	24.7
bl	50	25.1
rs	50	25.1

3006

8

250' E of Santa Cruz st

rs	51	25.0
bl	52	24.9
y	55	24.6
l	46	25.5
y	53	24.8
bl	50	25.1
rs	46	25.5

300' E = W line of Del Monte st

rs	50	25.1
bl	50	25.1
y	53	24.8
l	46	25.5
y	50	25.1
bl	45	25.6
rs	50	25.1

TP

404 2924

486

25-28

Del Monte
at corner

1914

91.66.07

Del Monte 107 (80)

Center of Del Monte 11

92

39

25.3

92

40

25.2

61

40

25.2

61

40

25.2

4

44

24.8

4

42

25.0

2

40

25.2

2

40

25.2

4

44

24.8

4

44

24.8

61

42

25.0

61

42

25.0

52

41

25.1

52

41

25.1

W 1/2 of Del Monte 22

E 1/4 of Del Monte 22

52

40

25.2

52

45

24.7

61

41

25.1

61

41

25.1

4

45

24.7

4

45

24.7

2

41

25.1

2

40

25.2

4

45

24.7

4

41

25.1

61

39

25.3

61

58

25.4

2

39

25.3

2

40

25.2

1914

Ebb of Del Monte st

nd	38	25.4
bl	39	25.3
y	43	24.9
b	38	25.4
y	46	24.6
bl	42	25.0
sl	42	25.0

Ebb of Del Monte st

sl	44	24.8
bl	44	24.8
y	46	24.6
b	39	25.3
y	42	25.0
bl	37	25.5
nd	39	25.3

TP 297 28.7 404 25.20 ~~132~~
50' Ebb Del Monte st

nd	31	25.1
bl	33	24.9
y	37	24.5
b	35	24.9
y	38	24.4
bl	39	24.3
sl	39	24.3

100 E of Del Monte st

sl	45	23.7
bl	45	23.7
y	45	23.7
b	40	24.2
y	46	23.6
bl	42	24.0
nd	40	24.2

140' E of Red Mountain

9.2	4.6	2.3.6	Ad	5.8	2.2.4
Ad	4.4	2.3.4	Ad	5.9	2.2.3
Ad	5.3	2.2.9	4	6.5	2.1.7
4	4.7	2.3.5	6	5.9	2.2.3
4	5.2	2.3.2	4	6.5	2.1.7
Ad	5.5	2.2.7	Ad	6.7	2.1.5
5.2	5.2	2.2.6	5.2	6.6	2.1.6

200' E of Red Mountain

9.2	7.1	2.1.2	5.2	7.1	2.1.2
Ad	7.4	2.0.8	Ad	7.4	2.0.8
4	7.6	2.0.6	4	7.6	2.0.6
6	6.9	2.1.3	6	6.9	2.1.3
4	7.0	2.1.2	4	7.0	2.1.2
Ad	6.4	2.1.8	Ad	6.4	2.1.8
Ad	6.6	2.1.6	Ad	6.6	2.1.6

2817

300' E - W of Naragansett

12

2302

50' E of Naragansett

22		68	214	22	28	20.2
bl		70	212	bl	30	20.0
4		74	20.8	4	37	19.3
6		71	21.1	6	32	19.8
4		79	20.3	4	38	19.2
bl		77	20.5	bl	40	19.0
SL		80	20.2	SL	38	19.2
TP	249	2302	260	100' E of Naragansett		
			2058 2057			
			13m			
	E line of Naragansett			SL	45	18.5
SL		35	19.5	bl	45	18.5
bl		33	19.7	4	47	18.3
4		34	19.6	6	40	19.0
6		26	20.4	4	42	18.8
4		29	20.1	bl	39	19.1
bl		25	20.5	22	36	19.4
22		27	20.6			

2302

140' E of Mar -

ns	46	18.4
bl	47	18.3
y	54	17.6
b	49	18.1
y	52	17.8
bl	48	18.2
ss	48	18.2

160' E of Mar

ss	55	17.5
bl	54	17.6
y	59	17.1
b	53	17.7
y	57	17.3
bl	57	17.6
ns	50	17.7

2302

13

200' E of Mar

ns	60	17.0
bl	63	16.7
y	68	16.2
b	63	16.7
y	65	16.5
bl	65	16.5
ss	61	16.9

250' E of Mar

ss	72	15.8
bl	74	15.6
y	79	15.1
b	74	15.6
y	78	15.2
bl	76	15.4
ns	75	15.5

2302

300' E = W 2/3 of Niagara (80')

22	90	14.0
bl	88	14.2
4	87	14.3
6	81	14.9
4	83	14.7
bl	78	15.2
SL	78	15.2

W 1/2 of Niagara

SL	80	15.0
bl	85	14.5
4	85	14.5
6	83	14.7
4	91	13.9
bl	90	14.0
22	91	13.9

2302

14

W 1/4 of Niagara

22	96	13.4
bl	94	13.6
4	90	14.0
6	84	14.6
4	86	14.4
bl	83	14.7
SL	80	15.0

Center of Niagara

SL	83	14.7
bl	85	14.5
4	84	14.6
6	86	14.4
4	90	13.7
bl	96	13.4
22	99	13.1

2502

E 1/4 of Mayara

N2	100	13.0
bl	95	13.5
4	94	13.6
6	88	14.2
4	88	14.2
bl	87	14.3
SE	86	14.4

E bl of Mayara

SE	86	14.4
	88	14.2
	93	13.7
	90	14.0
	94	13.6
	96	13.4
	102	12.8

2502

15

Edin of Mayara

N2	103	12.7
bl	96	13.4
4	97	13.3
6	91	13.9
4	93	13.9
bl	90	14.0
SE	88	14.2

TP 558 1830 1030 1272

50' E of Mayara

SE	41	14.2
bl	44	13.9
4	51	13.2
6	49	13.4
4	54	12.9
bl	57	12.6
N2	59	12.4

1830

100' E of Mayno

R2	62	12.1
bl	60	12.3
4	56	12.7
6	54	12.9
4	53	13.0
bl	48	13.5
S2	47	13.6

140' E of Mayno

S2		
S2	48	13.5
bl	52	13.1
4	56	12.7
6	56	12.7
4	65	11.8
bl	63	12.0
R2	67	11.6

1830

160' E of Mayno

R2	64	11.9
bl	62	12.1
4	58	12.5
6	57	12.6
4	57	12.6
bl	51	13.2
S2	49	13.4

200' E of Mayno

S2		
S2	50	13.3
bl	54	12.9
4	62	12.1
6	57	12.6
4	57	12.4
bl	62	12.1
R2	64	11.9

16

1830

250' E of Mayana

SL	66	11.7
bl	65	11.8
y	69	11.4
b	73	12.0
y	60	12.3
bl	57	12.6
SL	50	13.3

300' E - NW of Newport

SL	58	12.5
bl	60	12.3
y	62	12.1
b	62	12.1
y	66	11.7
bl	66	11.7
SL	70	11.3

1830

17

W of Newport (80')

SL	70	11.3
bl	65	11.8
y	65	11.8
b	63	12.0
y	65	11.8
bl	58	12.6
SL	57	12.6

W 1/2 of Newport

SL	60	12.3
bl	63	12.0
y	63	12.0
b	66	11.7
y	70	11.3
bl	71	11.2
SL	72	11.1

1830

Center of Newport st

22	70	11.3
6b	68	11.5
4	65	11.8
6	65	11.8
4	66	11.7
6b	65	11.8
22	66	11.7

E 1/4 of Newport st

22	61	12.2
6b	62	12.1
4	65	11.8
6	61	12.2
4	65	11.8
6b	62	12.1
22	64	11.9

1830

18

E side of Newport st

22	68	11.5
6b	65	11.8
4	66	11.7
6	62	12.1
4	64	11.9
6b	60	12.3
22	62	12.1

E side of Newport st

22	62	12.1
6b	63	12.0
4	67	11.6
6	63	12.0
4	66	11.7
6b	70	11.3
22	69	11.4

TP

331

1635

526

1304

1635-

	50'	E of Newport	at
22		5.2	11.2
bl		4.9	11.5
4		5.0	11.4
6		4.7	11.7
4		5.1	11.3
bl		4.7	11.7
S2		4.5	11.9

	100'	E of Newport	
S2		5.1	11.3
bl		4.8	11.6
4		5.5	10.9
6		5.0	11.4
4		5.1	11.3
bl		5.1	11.3
22		5.4	11.0

1635

19

	140'	E of Newport	
22		5.9	10.5
bl		5.2	11.2
4		5.6	10.8
6		5.1	11.3
4		5.3	11.1
bl		5.0	11.4
S2		5.0	11.4

	160'	E of Newport	
S2		5.3	11.1
bl		5.4	11.0
4		5.9	10.5
6		5.4	11.0
4		5.8	10.6
bl		5.9	10.5
22		5.7	10.7

1635-

200' E of Newport

22	55	10.9
6h	57	10.7
4	61	10.3
6	57	10.7
4	62	10.2
6h	59	10.5
52	54	11.0

250' E of Newport

Sh	60	10.4
6h	61	10.3
4	66	9.8
6	60	10.4
4	55	10.9
6h	63	10.1
22	62	10.2

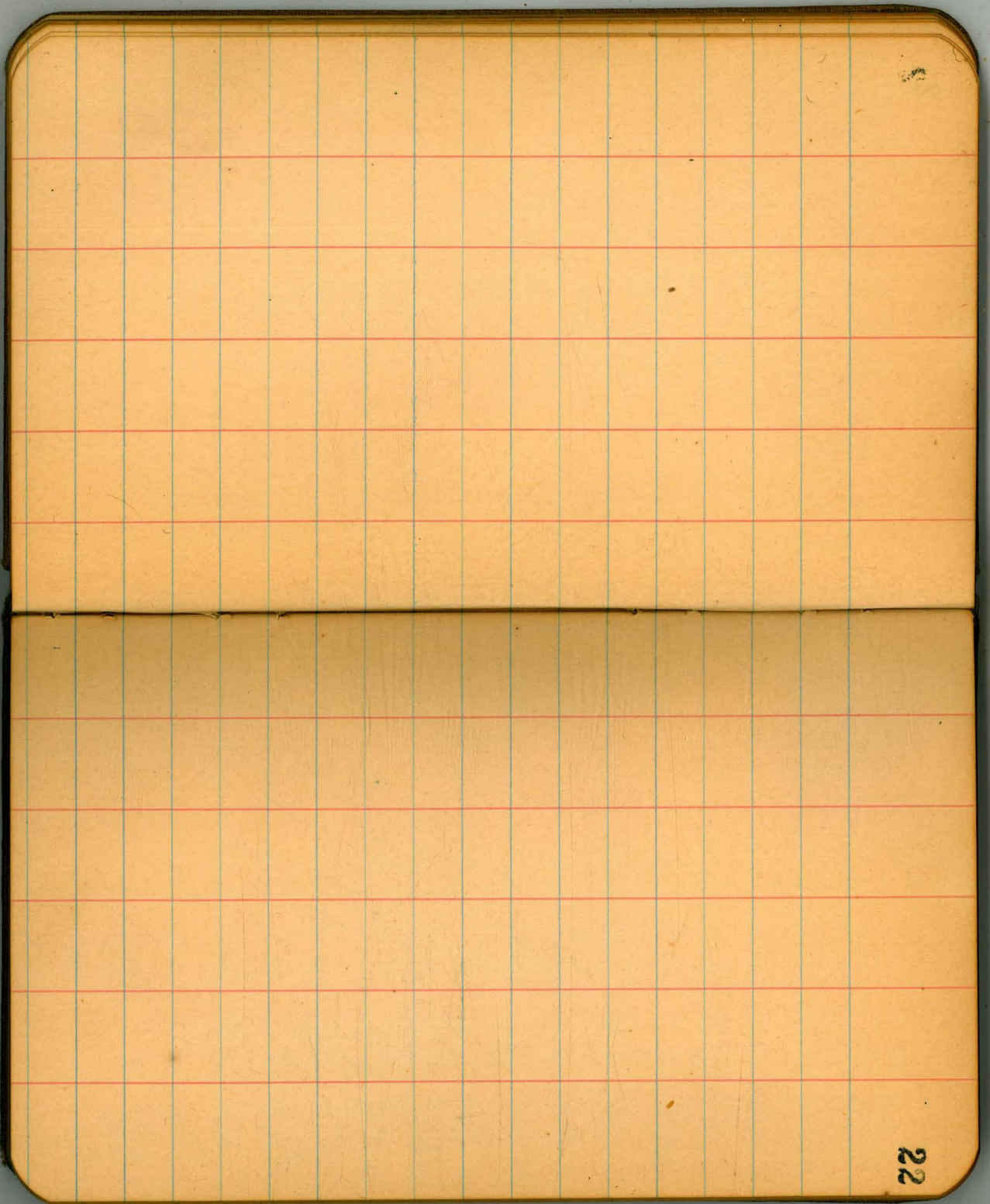
POSTED

1635-

20

300' E of W of Santa Monica

22	66	9.8
6h	65	9.9
4	69	9.5
6	62	10.2
4	62	10.2
6h	59	10.5
52	64	10.0



21

22

POSTED

Cross-section of Nagura St (80' Beach to 6th St)

2865-

23

				4		38	24.8
Bm	223	2280	2058	bl		34	25.2
TP	657	2865	2214	W2		36	25.0
	565	nop Bacon st.			450'	nop Bacon st	
W2 Bank		40	24.7	W2		42	24.4
W2		550'	nop Bacon st	bl		43	24.3
W2		39	24.7	4		46	24.0
bl		41	24.5	2		48	23.8
4		41	24.5	4		50	23.6
6		37	24.9	bl		50	23.6
4		36	25.0	E2		40	24.6
bl		35	25.1		400'	nop Bacon st	
E2 Bank		40	24.6	E2		70	21.6
		500'	nop Bacon st	bl		66	22.0
E2		28	25.8	4		64	22.2
bl		39	24.7	6		63	22.3
4		41	24.5	4		63	22.3
1		40	24.6	W2		54	23.2
						54	23.2

4865-

350' N of Bacon St

W2	73	21.3
bt	72	21.4
9	75	21.1
6	82	20.4
4	87	19.9
bt	93	19.3
E2	100	18.6

TP

331

2030

1166

1699

300

N of Bacon St

E2	43	16.0
bt	35	16.8
4	27	17.6
6	26	17.7
4	23	18.0
bt	21	18.2
W2	20	18.3

2030

24

250' N of Bacon St

W2	42	16.1
bt	45	15.8
4	48	15.5
6	53	15.0
4	52	14.7
bt	61	14.2
E2	67	13.6

200' N of Bacon St

E2	72	13.1
bt	71	13.2
4	69	13.4
6	67	13.6
4	62	14.1
bt	59	14.4
W2	56	14.7

2030

150' n of Baem st

W2	64	13.9
Ch	69	13.4
4	70	13.3
6	75	12.8
4	77	12.6
Ch	77	12.6
E2	81	12.2

100' n of Baem

E2	82	12.1
Ch	82	12.1
4	78	12.5
6	78	12.5
4	74	12.9
Ch	75	13.1
W2	68	13.5

2030

25

50' n of Baem st

W2	69	13.4
	72	13.1
	74	12.9
	78	12.5
	77	12.6
	78	12.5
E2	79	12.4

n of Baem st (60')

E2	76	12.7
	75	12.8
	73	13.0
	72	13.1
	69	13.4
	62	14.0
W2	62	14.0

TP 908 2180 760 1270 ✓

2180

S of Bacon St

W2	66	15.2
bl	67	15.1
y	67	15.1
t	71	14.7
y	72	14.6
bl	74	14.4
E2	76	14.2

50' S of Bacon

E2	67	15.1
bl	66	15.2
y	65	15.3
t	66	15.2
y	64	15.4
bl	63	15.5
W2	62	15.6

2180

160' S of Bacon St

W2	58	16.0
bl	59	15.9
y	57	16.1
t	58	16.0
y	60	15.8
bl	62	15.6
E2	61	15.7

150' S of Bacon St

E2	60	15.8
bl	58	16.0
y	55	16.3
t	55	16.3
y	54	16.4
bl	54	16.4
W2	54	16.4

26

21.80

	200'	Sob	Baen st	
Wh			50	16.8
bl			50	16.8
y			50	16.8
b			51	16.7
y			52	16.6
bl			54	16.4
E2			56	16.2

250' Sob Baen st

E2			55	16.3
bl			53	16.5
y			51	16.7
b			51	16.7
y			48	17.0
bl			48	17.0
Wh			47	17.1

21.80

27

300 Sob Baen st

Wh			44	17.4
bl			46	17.2
y			47	17.1
b			48	17.0
y			49	16.9
bl			51	16.7
E2			53	16.5

350 Sob Baen st

E2			52	16.6
bl			48	17.0
y			47	17.1
b			45	17.3
y			47	17.1
bl			45	17.3
Wh			43	17.5

21.80

400' S of Baer st

W2	40	17.8
bl	40	17.8
y	42	17.6
b	43	17.5
y	44	17.4
bl	43	17.5
E2	46	17.2

450' S of Baer st

E2	45	17.3
bl	40	17.8
y	42	17.6
b	42	17.6
y	40	17.8
bl	38	18.0
W2	34	18.4

21.80

500' S of Baer st

W2	32	18.6
bl	33	18.5
y	35	18.3
b	35	18.3
y	39	17.9
bl	40	17.8
E2	42	17.6

TP

860 2641 402 17.78

550' S of Baer st

E2	84	18.0
bl	81	18.3
y	80	18.4
b	78	18.6
y	79	18.5
bl	77	18.7
W2	77	18.7

28

2641

600 s = n 2 bobblest (60)

W2	72	19.2
bl	72	19.2
y	73	19.1
b	75	18.9
y	76	18.8
bl	77	18.7
E2	77	18.7

n bob of bobblest (300)

E2	77	18.7
bl	76	18.8
y	75	19.0
b	75	18.9
y	73	19.1
bl	72	19.2
W2	70	19.4

2641

29

n 1/4 of bobblest

W2	71	19.3
bl	72	19.2
y	73	19.1
b	75	18.9
y	75	19.1
bl	75	18.9
E2	76	18.8

center of bobble

E2	77	18.7
bl	75	18.9
y	79	19.0
b	75	18.9
y	73	19.1
bl	71	19.3
W2	70	19.4

19.8	6.6	9M
19.8	6.6	LL
19.6	6.8	4
19.4	7.0	2
19.5	6.9	4
19.5	6.9	LL
19.2	7.2	22
19.9	6.5	22
19.9	6.5	LL
19.9	6.5	4
19.9	6.5	2
19.9	6.5	4
20.7	5.7	4
20.7	5.7	LL
21.0	5.4	4

Sum of 60000

2641

19.9	6.5	9M
20.0	6.4	LL
19.6	6.8	4
19.1	7.3	2
19.2	7.2	4
19.0	7.4	LL
18.8	7.1	22
19.1	7.3	22
19.2	7.2	LL
19.4	7.0	4
19.4	7.0	2
19.4	7.0	4
20.1	6.3	LL
20.2	6.2	9M

Sum of 60000

2641

2641

	100'	Sof	babl	W
W2			5-2	21.2
bb			5-2	21.2
y			5-3	21.1
b			5-7	20.7
y			5-2	21.2
bb			5-7	20.7
E2			6.0	20.4

	130'	Sof	babl	W
E2			5-4	21.0
bb			5-3	21.1
y			5-0	21.4
b			5-0	21.4
y			4-7	21.7
bb			4-7	22.0
W2			4-4	22.0

2641

31

	200'	Sof	babl	W
W2			4-2	22.2
bb			4-3	22.1
y			4-4	22.0
b			4-6	21.8
y			4-5	21.9
bb			4-0	22.4
E2			4-2	22.2

	250'	Sof	Babl	W
E2			3-8	22.6
bb			3-9	22.5
y			3-9	22.5
b			3-6	22.8
y			3-9	22.8
bb			3-6	22.8
W2			3-6	22.8

2641

	000'	Sof	Baco	W
W2			3.8	22.6
bl			2.8	23.6
y			3.1	23.3
b			3.3	23.1
y			3.1	23.3
bl			3.1	23.3
W2			3.3	23.1

	350'	Sof	Bobb	W
7P	344	3006	192	2449
Ed	350'	Sof	Bobb	W
			6.4	23.7
bl			6.1	24.0
y			5.9	24.2
b			6.3	23.8
y			6.0	23.1
bl			6.0	23.1
W2			6.0	23.1

3006

32

	400'	Sof	Bobb	W
W2			5.3	24.8
bl			5.6	24.5
y			5.4	24.7
b			5.7	24.4
y			5.9	24.2
bl			5.6	24.5
Ed			5.9	24.2

	450'	Sof	Bobb	W
Ed			5.4	24.7
bl			5.0	25.1
y			5.2	24.9
b			5.3	24.8
y			5.0	25.1
bl			4.9	25.2
W2			5.0	25.1

3006

500' 806 Cobble st

W2		43	25.8
bl		43	25.8
4		45	25.6
6		46	25.5
th		48	25.3
bl		47	25.4
El		46	25.5

550' 806 Cobble st

El		48	25.9
bl		48	25.9
4		40	26.1
6		41	26.0
4		40	26.1
bl		38	26.3
W2	657	37	26.4

3006

600' S- N line of DeZai st

W2		28	27.3
bl		30	26.1
4		31	26.1
6		32	26.8
4		30	27.1
bl		34	26.7
El		36	26.5

TR

657 33.00 3.61 2645

N- S line of DeZai st (60')

El		62	26.8
bl		67	26.3
4		60	27.0
6		60	27.0
4		58	27.2
bl		59	27.1
W2		58	27.2

33

N¹/₄ of De Zee St

W ₁	55-	27.5
bl	56	27.4
y	56	27.4
l	58	27.2
y	59	27.1
bl	61	26.9
El	61	26.9

Center of De Zee St

El	60	27.0
bl	58	27.2
y	56	27.4
b	57	27.3
y	55-	27.5
bl	56	27.4
W ₁	57	27.3

S¹/₄ of De Zee St

W ₁	52	26.8
bl	51	27.9
y	54	27.6
l	55	27.5
y	55	27.5
bl	58	27.2
El	59	27.1

Sbl of De Zee St

El	58	27.2
l	57	27.3
y	54	27.6
b	54	27.6
y	52	27.8
bl	51	27.9
W ₁	50	28.0

33.02

S line of De Forest

WL	49	28.1
bl	50	28.0
y	52	27.8
l	53	27.7
y	54	27.6
bl	55	27.5
El	56	27.4

Bm 873 35.18 26.45

50'S of De Forest

El	65	28.7
bl	69	28.3
y	67	28.5
l	67	28.5
y	66	28.6
bl	63	28.9
WL	63	28.9

35.18

100' S of De Forest

WL	55	29.7
bl	56	29.6
y	55	29.7
l	59	29.3
y	61	29.1
bl	61	29.1
El	61	29.1

150' S of De Forest

El	54	29.8
bl	53	29.9
y	52	30.0
l	52	30.0
y	49	30.3
bl	47	30.5
WL	47	30.5

35

35-18

200 Sof De Tare 2

Wk	38	31.4
bl	40	31.2
v	41	31.1
6	44	30.8
4	43	30.9
bl	45	30.7
EL	43	30.9

250 Sof De Tare 2

EL	38	31.4
bl	36	31.6
4	37	31.5
6	37	31.5
4	39	31.8
bl	39	31.8
Wk	31	32.1

35-18

36

300 Sof De Tare 2

Wk	30
bl	31
4	33
6	37
4	37
bl	37
EL	38

300 Sof De Tare 2

EL	26	32.6
bl	27	32.5
4	28	32.4
6	27	32.5
4	25	32.7
bl	25	32.7
Wk	25	32.9

TP 10.10 40.02 2.25 32.93

4303

350' Sof De For st

Wt	91	33.9
bl	92	33.8
y	92	33.8
l	94	33.6
y	93	33.7
bl	94	33.6
El	97	33.3

400' Sof De For st

El	86	34.4
bl	86	34.4
y	87	34.3
l	85	34.5
y	85	34.5
bl	85	34.5
Wt	84	34.6

4303

450' Sof De For st

Wt	61	36.9
bl	61	36.9
y	60	37.0
l	57	37.3
y	58	37.2
bl	65	36.5
El	66	36.6

500' Sof De For st

El	30	39.7
bl	32	39.8
y	33	39.7
l	29	40.1
y	27	40.3
bl	26	40.4
Wt	26	40.4

TP 1140 5382 0.61 4242

37

5-3.80

550' 508 De Zee st

W2	8,7	45.1
bl	8,9	44.9
4	8,8	45.0
4	9,4	44.4
4	9,6	44.2
bl	9,8	44.0
EL	10,0	43.8

600'S = 2nd Eben st (60')

EL	5,0	48.8
bl	4,7	49.1
4	4,0	49.8
l	3,3	50.5
4	3,0	50.8
bl	2,8	51.0
W2	2,8	51.0

T P 9.75- 6337 020 5062

6337

N. 1/4 of Eben st

W2	10,5	52.9
bl	10,7	52.7
4	11,4	52.0
l	12,0	51.4
4	12,2	51.2
bl	12,6	50.8
EL	13,3	50.1

N. 1/4 of Eben st 1

EL	12,4	51.0
bl	11,6	51.8
4	11,0	52.4
l	10,6	52.8
4	9,9	53.5
bl	9,5	53.9
W2	9,6	53.8

38

Center of Eber st

W	67	56.5
W	68	56.6
4	70	57.4
6	86	55.8
4	99	53.5
W	105	52.9
EL	113	52.1

S 1/4 of Eber st

EL	100	53.4
W	90	54.4
4	82	55.2
6	68	56.6
4	53	58.1
W	48	58.6
W	30	58.4

S 1/4 of Eber st

W	45	58.9
W	46	58.8
4	49	58.5
6	62	57.2
4	72	56.2
W	76	55.6
EL	87	54.7

S 1/4 of Eber st

EL	74	56.0
	70	56.4
	66	55.8
	59	57.5
	48	58.6
	47	58.7
	40	59.4

TP

12, 14

7161

388

5-249

SW corner
May 1945

71.61

	50'	S of	Eber st	
WR			5.2	66.4
bl			5.7	65.9
y			5.5	66.1
b			5.6	66.0
y			6.3	65.3
bl			5.8	64.3
ER			7.2	64.4

TP 1239 8198 202 6959

	100'	S of	Eber st	
ER			7.8	74.5
bl			7.0	75.0
y			7.0	75.0
b			6.6	75.4
y			6.3	75.7
bl			6.2	75.8
WR			5.8	76.2

TP 1203 9276 1252 8073

92.76

40

	150'	S of	Eber st	
WR			7.5	85.5
bl			8.3	84.5
y			8.8	84.0
b			9.2	83.6
y			9.1	83.7
bl			9.5	83.3
ER			10.1	82.7

200' S of Eber st

ER			2.7	90.1
bl			2.2	90.6
y			2.0	90.8
b			1.7	91.1
y			1.3	91.5

TP 1253 10387 122 9154

bl			1.2	92.7
WR			1.8	93.1

10387

	250'	Sub	Elev	st
WL			31	100.8
bl			37	100.2
y			46	99.3
b			56	98.3
y			61	97.8
bl			69	97.0
EL			79	96.0

	300'	Sub	Elev	st
EL			42	99.7
bl			29	101.0
y			23	101.6
b			10	102.9
y			0.0	103.9
TP	1271	115.57	107	102.80
bl			11.0	104.5
WL			10.0	105.5

11551

41

	350'	Sub	Elev	st
WL			62	109.0
bl			74	108.1
y			79	107.6
b			97	105.8
y			108	104.7
bl			109	104.6
EL			130	102.5

	400'	Sub	Elev	st
EL			83	107.2
bl			76	107.9
y			66	108.9
b			55	110.0
y			45	111.0
bl			36	111.9
WL			22	113.3
TP	1118	124.32	237	113.14

12432

	450	500	Elm	
WL			56	118.7
bl			66	117.7
y			80	116.3
b			90	115.3
y			96	114.7
bl			102	114.1
E2			112	113.1
	500	500	Elm	
E2			50	119.3
bl			43	120.0
W4			36	120.7
b			29	121.4
y			20	122.3
bl			05	123.8
TP	1162	13532	062	12370
WL			96	125.7

13532

42

	545	800	Elm	W
E2			109	124.4
bl			184	116.9
bl			107	124.8
bl			137	121.6
14			105	123.8
	550	500	Elm	
E2			178	117.5
bl			140	121.3
73			98	125.5
14			86	126.7
b			75	127.8
y			60	129.3
bl			28	132.5
WL			0.3	135.0

135-32

	560'	S of	Elev	
EL			9.1	126.2
bl			8.8	126.5
y			9.0	126.3
b			9.6	125.7
y			7.3	128.0
bl			4.5	130.8
W2			0.0	135.0

	580'	S of	Elev	
W2			5.7	129.1
bl			6.7	127.5
y			7.0	128.3
b			8.0	127.3

135-22

48

POSTED

	600'	S of	Elev	It	
NS			3.1		131.9
bl			4.5		130.8
y			6.4		128.9
b			4.3		131.0
y			2.8		132.5
TP	11.09	145.24	11.7	*	
bl			7.0		138.2
SS			8.0		137.2
TP	7.38		1.78		136.8
	3.5		5.7		

center is with 10' higher

X. sect. Meade ave.
 Park Blvd. to Georgia

H.I.
 727 347.35 340.09 BM.

POSTED

44

	West line Georgia		n line	10' W	
				1.6	345.8
n. line	1.6	345.5		0.9	346.5
	1.8	345.6	0.6 + 0.1 + 1.1	1.2 2.8 2.9	346.2 344.6 344.5
	2.5	344.9	c	2.6	344.8
c	2.3	345.1		2.9	344.5
	2.9	344.6		2.8	344.6
	2.8	344.6	So. line	2.6	344.8
So. line	2.6	344.8		7.5' W	
	2.5' W		So. line	2.6	344.8
So. line	2.7	344.7		2.7	344.7
	2.7	344.7		2.9	344.5
	2.8	344.6	c	2.6	344.8
c	2.5	344.9		3.1	344.3
	2.8	344.6		2.1	345.3
	2.5	344.9	n line	2.0	345.4
n line	2.4	345.0			

100' W

nline	2.9	344.5
	3.1	344.3
	3.1	344.3
c	2.7	344.7
	3.0	344.4
	2.8	344.6
Soline	2.9	344.5

125' W

Soline	2.9	344.5
	2.9	344.5
	3.2	344.2
c	2.9	344.5
	3.1	344.3
	2.1	345.3
nline	2.6	344.8

150' W

nline	2.4	345.0
	2.5	344.9
	2.3	345.1
c	3.1	344.3
	3.5 POSTED	343.9
	3.5	343.9
Soline	3.6	343.8

175' W

Soline	2.9	344.5
	3.7	343.7
	3.8	343.6
c	3.2	344.2
	3.5	343.9
	3.7	343.7
nline	3.6	343.8

347.35

46

500' W

N line	3.2	344.2
	3.8	343.6
	3.9	343.5
C	3.7	343.7
	4.0	343.4
	4.2	343.2
Sol line	3.9	343.5

226.85 (E. line micromer)

Sol line	4.5	342.9
	4.6	342.8
	4.4	343.0
C	4.1	343.3
	4.3	343.1
	4.1	343.3
N line	3.6	343.8

23' 15" W

N line	4.3	343.1
	4.4	343.0
	4.6	342.8
C	4.5	342.9
	4.9	342.5
	4.2	343.2
Sol line	4.9	342.5

48' 15" W

Sol line	4.7	342.7
	4.7	342.7
	5.1	342.3
C	4.8	342.6
	5.2	342.2
	4.7	342.7
N line	4.5	342.9

347.35

73. N. W. (E line Park Boulevard)

n line	5.2	342.2
	5.4	342.0
	5.3	342.1
c	5.2	342.2
	5.4	342.0
	5.7	341.7
s line	5.9	341.5
	c, eb,	
s line	5.6	341.8
	5.8	341.6
	5.7	341.7
c	5.7	341.7
	5.7	341.7
	5.7	341.7
n line	5.7	341.7

47

E 1/4

n line	5.5	341.9
	5.6	341.8
	5.4	342.0
c	5.6	341.8
	5.7	341.7
	6.0	341.4
s line	6.1	341.3
	center	
s line	5.1	342.3
	5.0	342.4
	5.1	342.3
c	5.1	342.3
	5.0	342.4
	5.0	342.4
n line	4.9	342.5

W 1/4			West line Park Boulevard		
nline	J.2	342.2	nline	4.8	342.6
	J.2	342.2		5.0	342.4
	J.2	342.2	POSTED	J.2	342.2
c	J.1	342.3	c	4.8	342.6
	J.2	342.2		4.9	342.5
	J.3	342.1		J.1	342.3
Soline	J.3	342.1	Soline	4.9	342.5
	W.C.B				
Soline	J.3	342.1		226.85	
	J.3	342.1			
	J.4	342.0		73.25	226.85
c	J.3	342.1			
	J.3	342.1			
	J.6	341.8			
nline	J.1	342.3			

Park Boulevard

missing
4.9
J.1

Durogin Street

Section 31st 11
 from N. G. to S. I.
 omitting intersection of H. St.

12/26/07
 Hatch
 Williams
 Emery

49

14245

BM	12.55	93.50	81.24	3 nails in base board of fence, SW Cor 32 ^d - G.			
TP	12.26	10.636	00	93.50	C	3.2	139.3.
TP	13.00	11.912	014	106.12	1/4	3.5	139.0
TP	12.76	13.145	023	118.67	cb	3.8	138.7
TP	12.57	142.45	157	129.58	E	4.4	138.1

N. G. St.

N 1/4 G

E			3.07	139.35	NE Hub	E	5.3	137.2
cb			2.8	139.7		cb	4.5	138.0
1/4			2.8	139.7		1/4	4.5	138.0
cr			2.3	140.2		C	3.9	138.6
1/4			1.8	140.7		1/4	3.7	138.8
cb			1.7	140.8		cb	3.7	138.8
W			1.7	140.8		W	3.8	138.8

N. G. St.

cb G.

W			2.2	140.3		W	4.8	137.7
cb			2.5	140.0		cb	4.6	137.9
1/4			2.9	139.6		1/4	4.6	137.9

14245

cr	4.8	137.7
1/2	5.4	137.1
cb	5.8	136.7
E	6.1	136.4

S 1/4 G

E	7.3	135.2
cb	7.1	135.4
1/4	6.9	136.1
c	6.0	136.5
1/2	5.8	136.7
cb	5.7	136.8
w	5.6	136.9

S cb G

w	7.4	135.1
cb	6.9	135.6
1/4	7.1	135.4
c	7.3	135.2

14245

1/2	7.8	134.7
cb	8.3	134.2
E	8.6	133.9

S 1/2 G

E	10.2	132.3
cb	9.9	132.6
1/4	9.3	133.2
c	9.2	133.3
1/2	8.9	133.6
cb	8.9	133.6
w	9.4	133.1

S 1/2 of G

w	14.3	128.2
cb	13.8	128.7
1/4	13.1	129.4
cr	12.6	129.9
1/2	12.9	130.1

	142.45		
cb		12.8	129.7
E		13.2	129.3
T.P.	0.20	129.70	129.50
	50' S of G		
E		4.6	125.1
cb		4.6	125.1
1/4		4.8	124.9
c		5.2	124.5
1/4		5.2	124.5
cb		5.9	123.8
W		6.6	123.1
	75' S of G		
W		11.1	118.6
cb		10.1	119.6
1/4		9.7	120.0
c		9.5	120.2
1/4		9.1	120.6

	129.70		
cb		9.1	120.6
E		8.7	121.0
T.P.	0.20	117.22	126.8
	100' S of G		
E		1.3	115.9
cb		1.5	115.7
1/4		2.1	115.1
c		3.2	115.0
1/4		2.6	114.6
cb		3.1	114.1
W		3.9	113.3
	125' S of G		
W		6.5	110.7
cb		6.7	110.8
1/4		6.5	110.7
c		6.6	110.6
1/4		6.4	110.8

11722
cb 6.2 111.0

E 5.9 111.3

140' S of G - NL Alley

E 7.7 109.5

cb 7.9 109.3

1/4 7.8 109.4

0 7.9 109.8

+7 7.7 109.5

1/8 9.2 108.0

+5 8.1 109.1

cb 7.3 109.9

W 6.3 110.9

160' S of G - SL Alley

W 6.9 110.3

cb 8.1 109.1

1/4 9.3 107.9

C 10.0 107.2

11722
1/4 10.4 106.8

cb 11.1 106.1

E 12.2 105.0

175' S of G

E 10.8 106.4

cb 10.1 107.1

1/4 9.3 107.9

C 8.5 108.7

1/4 7.9 109.3

cb 6.4 110.8

W 4.3 112.9

200' S of G

W 2.2 115.0

cb 3.9 113.3

1/4 5.0 112.2

C 6.7 110.5

1/4 8.5 108.7

	117.27		
cb		9.3	107.9
E		10.1	107.1
325' S of G			
F		10.6	106.6
cb		9.6	107.6
1/4		7.6	109.6
c		5.7	111.5
1/4		4.2	113.0
cb		2.6	114.6
W		0.4	116.8
T.P.	271	118.68	125 115.97
250' S of G.			
W		0.3	118.4
cb		2.9	115.8
1/4		4.5	114.2
c		6.5	112.2
1/4		7.8	111.9

	118.68		
cb		9.7	109.0
E		11.7	107.0
275' S of G			
F		11.3	107.4
cb		9.4	109.3
1/4		7.2	111.5
c		5.3	113.4
1/4		4.1	114.6
cb		2.3	116.4
W		0.3	118.4
300' S of G = NL H.			
W		0.80	117.9
cb		2.9	115.8
1/4		5.2	113.5
c		7.2	111.5
1/4		8.6	110.1
cb		10.0	108.7

11865

E 135 108.08 11.95 106.73 Habb

50' S of H.

E		9.0	99.1
cb		9.0	99.1
1/4		7.3	107.8
Q		6.0	102.1
1/4		5.1	103.0
cb		3.4	104.7
W		2.2	105.9

25' S of H.

W		6.3	101.8
cb		7.1	101.0
1/4		8.1	100.0
C		9.1	99.0
1/4		10.7	97.7
cb		10.5	97.6
E		11.2	96.9

108.08

50' S of H.

E		13.3	94.8
cb		12.4	95.7
1/4		12.1	96.0
C		12.1	96.0
1/4		11.3	96.8
cb		10.2	97.9
W		9.7	98.4

75' S of H.

W		12.9	95.2
TP	0.40	95.95	12.37
cb		1.7	94.3
1/4		1.9	94.1
C		2.4	93.6
1/4		2.6	93.4
cb		3.1	92.9
E		3.9	92.6

9595

100' S of H.

E	5.2	90.8
cb	5.3	90.7
1/4	5.3	90.7
a	4.8	91.2
1/2	4.6	91.4
cb	3.5	92.5
W	3.4	92.6

125' S of H.

W	5.7	90.3
cb	5.8	90.2
1/4	6.5	89.5
c	6.7	89.6
1/4	6.6	89.4
cb	6.4	89.4
E	6.7	89.6

9595

140' S of H. = N. Alley

F	7.4	88.6
cb	7.5	88.5
1/4	7.5	88.5
c	7.2	88.8
1/4	7.0	89.0
cb	6.8	89.2
W	7.1	88.9

160' S of H. = S. Alley

W	8.3	87.7
cb	7.8	87.2
1/4	7.5	87.5
c	8.6	87.4
1/4	8.6	87.4
cb	8.6	87.4
E	8.8	87.2

95.95
175' S of H.

E	9.9	86.6
cb	9.3	86.7
1/4	9.7	86.6
c	9.6	86.4
1/4	9.4	86.6
cb	8.9	87.1
W	8.8	87.2

200' S of H.

W	10.8	85.2
cb	10.8	85.2
1/4	10.9	85.1
c	11.1	84.9
1/4	10.8	85.2
cb	10.6	85.4
E	10.5	85.5

95.95
225' S of H.

E	11.5	84.5
cb	11.7	84.3
1/4	12.1	83.9
c	12.2	83.8
1/4	12.3	83.7
cb	12.5	83.5
W	12.4	83.6

250' S of H.

W	13.2	82.8
cb	13.1	82.9
1/4	13.2	82.8
c	12.7	83.3
1/4	12.7	83.3
cb	12.4	83.6
E	12.2	83.8

87.07
TP. 316 ~~86.87~~ 12.04 83.91

8707
8607

275' S of H.

E	4.1	83.0
cb	4.3	82.8
1/4	4.4	82.7
c	4.5	82.6
1/4	4.6	82.5
cb	4.5	82.6
W	4.8	82.3

300' S of H = N 1/4 I.

W	5.3	81.8
cb	5.0	82.1
1/4	5.1	82.0
c	4.9	82.2
1/4	4.5	82.6
cb	4.4	82.7
E	4.2	82.9

8707
8607

N cb. I

E	4.5	82.6
cb	4.8	82.3
1/4	4.7	82.4
c	4.8	82.3
1/4	4.9	82.2
cb	5.4	81.7
W	5.3	81.8

N 1/4 I

W	5.5	81.6
cb	5.2	81.9
1/4	5.0	82.1
c	5.1	82.0
1/4	5.0	82.1
cb	5.1	82.0
E	4.9	82.2

8707
~~8607~~

Or F

E	5.0	82.1
cb	5.3	81.8
1/4	5.4	81.7
C	5.5	81.6
1/4	5.4	81.7
cl	5.5	81.6
W	5.5	81.6

S 1/4 I

W	5.9	81.2
cl	5.5	81.6
1/4	5.9	81.7
C	5.9	81.7
1/4	5.5	81.6
cl	5.6	81.5
E	5.0	82.1

8207
~~8607~~

S cb F

E	5.3	81.8
cb	5.8	81.3
1/4	5.6	81.5
C	5.6	81.5
1/4	5.7	81.4
cb	5.7	81.4
W	6.1	81.0

SL I

W	6.1	81.0
d	6.0	81.1
1/4	5.9	81.2
C	5.9	81.2
1/4	5.8	81.3
cl	6.2	80.9
E	5.8	81.3

TP. 3.45 79.95 10.07 76.50 75.50

79.95

~~78.45~~Bm 30th - J35²

76.43

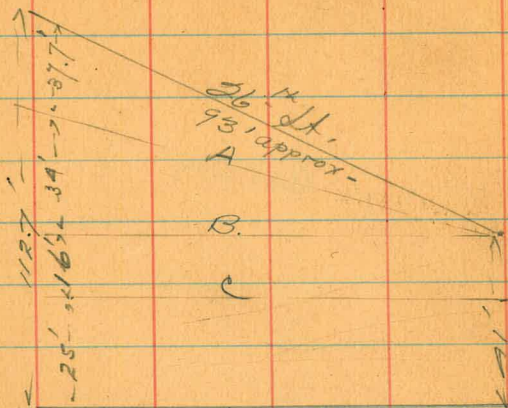
76.42

Sub -

75.43

POSTED

Section Sicard from
26th to S.D. Bay -



B.M. 7.31 National am
N.E. Co's National 9/26/95
WA 26th 57.29

N	3.1	54.2
cb	3.4	53.9
1/2	3.5	53.5
c	4.2	53.1
1/2	4.7	52.6
cb	5.6	51.7
s	Siderwalks -	

Jan 7/08
Watch
Williams
Emery

57.29

60

A

W	3.8	53.5
cb	4.2	53.1
1/2	POSTED	53.0
c	4.4	52.9
1/2	4.6	52.7
cb	5.2	52.1
E	Siderwalks	

B.

W	4.4	52.9
cb	4.7	52.6
1/2	4.8	52.5
c	4.7	52.6
1/2	5.0	52.3
cb	5.7	51.6

5729

C

ECB.		6.3	51.0
1/2		5.4	51.9
C		5.0	52.3
1/4		5.6	51.7
cb		4.9	52.4
W		4.7	52.6

NL National

vv		5.4	51.9
cb		6.0	51.3
1/4		6.5	50.8
C		6.5	50.8
1/4		6.4	50.9
cb.		7.2	50.1

T.P.	0.27	46.94	10.62	46.67
T.P.	4.86	39.80	12.00	34.94

See page 71

39.70

Ncb. Newton

E.		3.9	35.9
cb		3.8	36.0
1/2		3.4	36.4
C		2.9	36.8
1/4		2.4	37.4
cb		2.4	37.4
W		2.5	37.3

N 1/4

W		3.6	36.2
cb		3.7	36.1
1/2		4.0	35.8
C		3.9	35.9
1/2		4.3	35.5
d		4.2	35.6
E		4.4	35.4

39.80

N.R. NC-O Ry.

E	3.31	36.49
S. Paul is Track is level on N.R. across Sicard St		
	3.02	36.78
	5/4	
W	4.2	35.6
cb	4.6	35.2
1/4	4.4	35.4
c	4.5	35.3
1/4	5.0	34.8
cb	5.1	34.7
E	5.2	34.6
5cb.		
E	5.2	34.6
cb	5.1	34.7
1/2	4.9	34.9
c	4.6	35.2
1/4	4.7	35.1

39.50

cb	4.6	35.2
W	4.1	35.7
St. Newton		
W	4.3	35.5
cb	4.5	35.3
1/4	4.5	35.3
c	4.6	35.2
1/4	5.1	34.7
cb	5.3	34.5
E	5.3	34.5
50' S of Newton		
E	6.6	33.2
cb	6.6	33.2
1/4	6.4	33.4
c	6.1	33.7
1/4	6.3	33.5
cb	6.2	33.6

3980

W	6.2	33.6
100' S of Newton		
W	8.0	31.8
cb	7.9	31.9
1/4	7.7	32.1
c	7.5	32.3
1/2	7.5	32.3
cb	7.3	32.5
E	7.2	32.6

140' S = Alley,

E	8.0	31.8
cb	8.2	31.6
1/4	8.5	31.3
c	8.7	31.1
1/2	8.7	31.1
cb	8.7	31.1
W	8.9	30.9

3980

160' S = Alley

W	9.4	30.4
cb	9.3	30.5
1/4	9.2	30.6
c	8.7	31.1
1/2	8.5	31.3
cb	8.3	31.5
E	8.3	31.5

200' S of Newton

E	10.2	29.6
cb	9.9	29.9
1/4	9.7	30.6
c	9.3	30.5
1/2	9.9	29.9
cb	10.2	29.6
W	10.3	29.5

3980

230' S of Newton

W	11.3	28.5
cb	11.5	28.3
1/4	11.5	28.3
c	11.3	28.5
1/2	11.1	28.7
cb	11.3	28.5
E	10.6	29.2

500' S = NL Main St

F	11.1	28.7
cb	11.4	28.4
1/4	12.2	27.6
c	12.0	27.8
1/2	11.8	28.0
cb	12.0	27.8
W	11.8	28.0

T.P. 0.80 2930 1130 28.50

2930

535' Main St -

W	3.9	25.4
cb	4.1	25.2
1/4	2.6	26.7
c	2.7	26.6
1/2	3.7	25.6
cb	4.0	25.3
E	3.6	25.7

50' S of Main

E	4.3	25.0
cb	4.6	24.7
1/4	4.8	24.5
c	5.4	23.9
1/2	5.6	23.7
cb	5.6	23.7
W	5.6	23.7

29.30
100' S of main

W	6.7	22.6
cb	6.6	22.7
1/4	6.1	23.2
C	5.2	24.1
1/4	5.2	24.1
cb	5.4	23.9
E	5.3	24.0

140' S. = Alley

E	6.1	23.2
cb	6.1	23.2
1/2	5.6	23.7
c	5.4	23.9
1/4	5.9	23.4
cb	6.3	23.0
W	7.1	22.2

29.30
160' S = Alley

W	7.0	22.3
cb	6.3	23.0
1/4	6.2	23.1
C	6.1	23.2
1/4	6.2	23.1
cb	6.6	22.7
E	6.4	22.9

200' S of main

E	7.0	22.3
cb	7.1	22.2
1/2	7.2	22.1
C	7.8	21.5
1/4	8.0	21.3
cb	8.3	21.0
W	8.4	20.9

2930

260' S of main

W	9.1	20.2
cb	9.0	20.3
1/4	8.8	20.5
c	8.3	21.0
1/2	8.3	21.0
cb	8.2	21.1
E	8.2	21.1

500' S - NE Perm

E	9.9	19.4			
cb	10.0	19.3			
1/4	10.0	19.3			
c	10.1	19.2			
1/4	10.1	19.2			
cb	10.2	19.1			
W	191	21.00	10.21	19.09	NW 197

21.00

N cb Perm

W	2.1	18.9
cb	2.1	18.9
1/2	2.1	18.9
c	1.7	19.3
1/2	1.9	19.1
cb	1.9	19.1
E	1.8	19.2

N 1/4 Perm

E	1.9	19.1
cb	2.0	19.0
1/4	2.1	18.9
c	2.1	18.9
1/2	2.1	18.9
cb	2.1	18.9
W	2.1	18.9

21.00

Cn Pierre

W	2.6	18.4
cb	2.5	18.5
1/4	2.6	18.4
c	2.4	18.6
1/4	2.5	18.5
cb	1.9	19.1
E	1.9	19.1

S 1/4 Pierre

E	1.9	19.1
cb	2.5	18.5
1/4	2.7	18.3
c	2.7	18.3
1/4	2.8	18.2
cb	2.8	18.2
W	2.8	18.2

21.00

S cb Pierre

W	3.1	17.9
cb	3.2	17.8
1/4	3.1	17.9
c	3.0	18.0
1/4	3.0	18.0
cb	2.9	18.1
E	2.4	18.6

S 1/4 Pierre

E	2.9	18.1
cb	3.2	17.8
1/4	3.2	17.8
c	3.3	17.7
1/4	3.5	17.5
cb	3.5	17.5
W	3.4	17.6

67

21.80

50' S of Prairie

W	4.5	16.5
cb	4.3	16.5
1/4	4.5	16.5
c	4.3	16.7
1/2	4.2	16.8
cb	2.0	17.0
F	3.6	17.4

100' S of Prairie

F	4.9	16.1
cb	5.1	15.9
1/4	5.3	15.7
c	5.0	16.0
1/2	4.8	16.2
cb	5.0	16.0
W	5.7	15.3

21.00

140' S - Alley

W	6.4	14.6
cb	6.4	14.6
1/4	6.1	14.9
c	5.8	15.2
1/2	5.8	15.2
cb	5.8	15.2
F	5.7	15.3

160' S Alley

F	6.0	15.0
cb	6.3	14.7
1/4	6.3	14.7
c	6.2	14.8
1/2	6.7	14.3
cb	6.6	14.4
W	6.7	14.3

Top man hole = 2.98 18.02

2100

200' S of Prairie

W	7.4	13.6
cb	7.5	13.5
1/4	7.6	13.4
c	7.5	13.5
1/4	7.3	13.7
cb	7.3	13.7
E	7.2	13.8

250' S of Prairie

E	8.2	12.8
cb	8.3	12.7
1/4	8.6	12.4
c	8.5	12.5
1/4	8.5	12.5
cb	8.7	12.3
W	8.8	12.2

2100

300' S - N.L. Railroad Ave

W	10.3	10.7
cb	10.0	11.0
1/4	9.9	11.1
c	10.0	11.0
1/4	9.9	11.1
cb	9.8	11.2
E	9.8	11.2

N. Ch. Railroad

E	10.1	10.9
cb	10.3	10.7
1/4	10.4	10.6
c	10.4	10.6
1/4	10.4	10.6
cb	10.5	10.5
W	10.5	10.5

2100

N 1/4 Railroad Ave

W	10.5	10.5
cb	10.2	10.8
1/4	9.2	11.8
c	9.0	12.0
1/4	8.5	12.2
cb	8.8	12.2
E	8.7	12.3

CR Railroad Ave

E	10.5	10.2
cb	11.1	9.9
1/4	10.9	10.1
c	10.4	10.6
1/4	9.5	11.5
cb	9.5	11.5
W	7.1	11.9

2100

S 1/4 Railroad Ave

W	11.4	9.6
cb	11.2	9.8
1/4	11.4	9.6
c	11.6	9.4
1/4	11.5	9.5
cb	11.4	9.6
E	11.0	10.0

S cb Railroad Ave

E	11.5	9.5
cb	11.7	9.3
1/4	11.9	9.1
c	11.8	9.2
1/4	11.7	9.3
cb	11.6	9.4
W	11.4	9.6

2100

S.L. Railroad Ave

W	11.4	9.6
cb	11.9	9.1
1/4	12.0	9.0
C	12.2	8.8
1/4	11.9	9.1
cb	12.2	8.8
E	11.8	

Section from 5 Cor. to 20' S of W Cor.

E	11.8	9.2
cb	12.2	8.8
1/4	16.0	5.0
C	15.4	5.6
+3'	12.2	8.8
1/4	12.1	8.9
cb	11.8	9.2
W	11.4	9.6

Sicard St.

71

2100

Rail at W.L.	1290	8.1
" " E.	1292	8.18
Pipe - M.H. -	792	13.05

B.M. 176 51.74 49.98

Continued from page 61.

S.L. National

E	2.5	49.24	49.25
cb	3.1	48.6	
1/4	3.2	48.5	
C	2.8	48.9	
1/4	2.7	49.0	
cb	2.8	48.9	
W	2.5	49.2	

Sicard St.

51.74

3'5 National

W	2.6	49.1
Cb.	2.3	49.4
1/4	2.3	49.4
C	2.7	49.0
1/4	3.0	48.7
Cb.	2.3	49.4
E	2.8	48.9

25'5

E	3.4	48.3
Cb.	3.7	48.0
1/4	3.9	47.8
C	3.3	48.4
1/4	3.6	48.1
Cb.	3.6	48.1
W.	3.5	48.2

51.74

72

50'5 National

W	4.7	47.0
Cb.	4.3	47.4
1/4	4.3	47.4
C	4.1	47.6
1/4	4.4	47.3
Cb.	4.8	46.9
E.	4.7	47.0

75'5

E	6.3	45.4
Cb.	6.4	45.3
1/4	6.4	45.3
C	6.2	45.5
1/4	6.0	45.7
Cb.	5.7	46.0
W.	5.8	45.9

Sicard St.

51.74

100' S National

W	7.0	44.7
Cb	7.3	44.4
1/4	7.9	43.8
C	7.8	43.9
1/4	8.1	43.6
Cb	8.3	43.4
E	8.3	43.4

125' S.

E	10.1	41.6
Cb	9.8	41.3
1/4	9.6	42.1
C	9.3	42.4
1/4	9.2	42.5
Cb	9.0	42.7
W	8.8	42.9
T.P.	1.17	43.02
	9.89	41.85

Sicard St.

43.02

140' = Alley

W	0.6	42.4
Cb	0.9	42.1
1/4	1.2	41.8
C	1.2	41.8
1/4	1.7	41.3
Cb	2.1	40.9
E	2.0	41.0

160' = Alley

E	3.0	40.0
Cb	2.9	40.1
1/4	2.3	40.7
C	1.9	41.1
1/4	1.7	41.3
Cb	1.5	41.5
W	1.2	41.8

73

Sicard St.

43.02

175' S National

W	16	41.4
Cb	1.9	41.1
1/4	2.3	40.7
C	2.5	40.5
1/4	3.1	39.9
Cb	3.3	39.7
E	3.4	39.6

200 S.

E	3.8	39.2
Cb	3.8	39.2
1/4	3.6	39.4
C	3.1	39.9
1/4	2.6	40.4
Cb	2.5	40.5
W.	2.4	40.6

43.02

74

225' S National

W	2.9	40.1
Cb	3.3	39.7
1/4	3.8	39.2
C	4.2	38.8
1/4	4.5	38.5
Cb	4.5	38.5
E	4.5	38.5

250' S.

E	5.2	37.8
Cb	5.0	38.0
1/4	4.9	38.1
C	4.5	38.5
1/4	4.4	38.6
Cb	3.9	39.1
W	3.8	39.2

Sicard St.

43.02

75

275'5 National

W	4.4	38.6
CB	4.7	38.3
1/4	4.8	38.2
C	5.1	37.9
1/4	5.3	37.7
CB	6.0	37.0
E	5.9	37.1

POSTED

300'5 = M.L. Newton

E	6.8	36.2
CB	6.8	36.2
1/4	6.4	36.6
C	5.8	37.2
1/4	5.1	37.9
CB	5.0	38.0
W.	5.2	37.8
E. Rail	6.6	36.4

(along)
 Taylor } cross-section of Longley St (60')
 Orange } N. of K to Pueblo line north
 7/11/09 } N. line of K St

	0.79	<u>107.94</u>		107.15
W2			1.5	106.4
bl			2.3	105.6
y			3.6	104.3
b			5.3	102.6
y			6.4	101.2
bl			7.7	100.2
EL			8.7	99.2
	2.5'	N of	K St	
EL			4.7	103.2
bl			3.9	104.0
y			3.1	104.8
b			2.0	105.9
TP	11.20	<u>119.34</u>	0.50	107.44
y			10.8	108.5
bl			9.0	110.3
W2			7.5	111.8

POSTED

119.34

Longley St

76

50'	N of	K St		
			3.6	115.7
			4.0	115.3
			5.5	113.8
			7.0	112.3
			8.5	110.8
			10.8	108.5
			12.5	107.0
75'	N of	K St		
			7.7	111.6
			6.4	112.9
			5.3	114.0
			3.6	115.7
			2.0	117.3
			0.4	118.9
			0.0	119.3
1206		<u>130.06</u>	1.34	118.00

POSTED

130.06

	100'	n of	K	st
WL			7.4	122.7
bl			8.4	121.7
y			9.5	120.6
b			10.7	119.4
y			11.3	118.8
bl			12.2	116.9
EL			14.7	115.4

	125'	n of	K	st
EL			10.1	120.0
bl			8.8	121.3
y			8.0	122.1
b			6.7	123.4
y			5.6	124.5
bl			4.1	126.0
WL			3.3	126.8

130.06Long by

77

	150'	n of	K	st
WL			0.5	129.6
bl			1.5	128.6
y			2.5	127.6
b			4.0	126.1
y			5.0	125.1
bl			5.8	124.3
EL			6.7	123.4

	275'	n of	K	st
EL			4.2	125.9
bl			3.7	126.7
y			2.5	127.6
b			1.7	128.7
70	11.26	<u>140.42</u>	1.00	129.6
y			1.66	129.8
bl			9.9	130.5
WL			9.0	131.4

14042

	202'	n of	K	st
W2			75	132.9
W1			79	132.5
Y			83	132.1
b			89	130.5
Y			109	129.5
W1			113	129.1
EL			123	128.1

	225'	n of	K	st
EL			104	130.0
W1			98	130.6
Y			90	131.4
b			82	132.2
Y			67	133.7
W1			57	134.7
W2			55	135.1

14042

Sungby

78

	250'	n of	K	st
W2			25	137.9
W1			36	136.8
Y			50	135.4
b			64	139.0
Y			68	133.6
W1			73	133.1
EL			80	132.4

	275'	n of	K	st	POSTED
EL			66	133.8	
W1			55	134.9	
Y			48	135.6	
b			42	136.2	
Y			29	138.0	
W1			13	139.1	
W2			00	140.4	
TP	825'		14672	1.88	138.54

14679

	300'	n of	K	st
WL			44	142.4
bl			56	141.2
y			70	139.8
b			90	137.8
y			92	137.6
bl			105	136.3
EL			114	135.4

	325'	n of	K	st
EL	3		102	136.6
bl			92	137.6
y			83	138.5
b			74	139.4
y			58	141.0
bl			40	142.8
WL			28	144.0

14679

79

	350'	n of	K	st
WL			12	145.6
bl			20	143.8
y			47	142.1
b			65	140.3
y			73	139.5
bl			86	138.2
EL			100	136.8

	375'	n of	K	st
EL			103	136.5
bl			88	138.0
y			75	139.3
b			60	140.8
y			45	142.3
bl			24	143.6
WL			0.6	146.2

14679

	400'	n of	K st	
WL			18	145.0
HL			39	142.9
Y			53	141.5
b			70	139.8
Y			84	138.4
HL			101	136.8
EL			110	135.8
	425'	n of	K st	
EL			121	134.7
b			110	135.8
Y			98	137.0
b			84	138.4
Y			72	139.6
HL			60	140.8
WL			52	141.6

14679

doubly

0

	450'	n of	K st	
WL			78	139.0
HL			95	137.3
Y			109	135.9
b			120	134.8
TP	475'	<u>135.23</u>	1231	134.48
Y			16	133.6
HL			25	132.7
EL			33	131.9
	475'	n of	K st	
EL			57	129.5
HL			46	130.6
Y			42	131.0
b			36	131.6
Y			20	133.2
HL			05	134.7
WL			100	135.4

13523

	500'	n of	K St	
WA			36	131.6
SL			48	130.4
Y			64	128.8
b			78	127.4
Y			88	126.4
SL			102	125.0
EL			118	123.4
	525'	n of	K St	
WA			82	127.0
SL			95	125.7
Y			114	123.8
TP	000	12361	1162	123.61
b			22	121.4
Y			33	120.3
SL			79	119.2
EL			54	118.2

12361

Smyley

550' n of K St

EL	97	113.9
SL	86	115.0
Y	78	115.8
b	68	116.8
Y	52	118.4
Y	42	119.4
SL	30	120.6
WA		
	575' n of K St	
WA	73	116.3
SL	87	114.9
Y	96	114.0
Y	110	112.6
Y	122	111.4
SL	133	110.3
EL	144	109.2
TP	057	11197
	1221	11150

600' n of K St

WA	07	111.3
SL	28	109.2
Y	50	107.0
Y	74	104.6
Y	89	103.1
SL	96	102.4
EL	110	101.9

641.5' n of K St - Pueblo line

EL	157	96.3
SL	146	97.4
Y	132	98.8
Y	128	99.2
Y	124	99.6
SL	116	100.4
WA	103	101.7

Return to City Engineers Office
City Hall, San Diego, Cal.

307.35
4.41
342.94

6 193
75.5

112.00
9.6
102.4

Return to City Engineers Office
City Hall, San Diego, Cal.
TRAVERSE TABLE FOR TRANSIT BOOK.

From 1° to 90° for a distance of 100.

Degrees.	DEGREES.		¼ DEGREE.		½ DEGREE.		¾ DEGREE.		Degrees.
	Lat.	Dep.	Lat.	Dep.	Lat.	Dep.	Lat.	Dep.	
0			100.00	0.44	100.00	0.87	99.99	1.31	89
1	99.98	1.75	99.98	2.18	99.97	2.62	99.95	3.05	88
2	99.94	3.49	99.92	3.93	99.91	4.36	99.88	4.80	87
3	99.86	5.23	99.84	5.67	99.81	6.10	99.79	6.54	86
4	99.76	6.98	99.73	7.41	99.69	7.85	99.66	8.28	85
5	99.62	8.72	99.58	9.15	99.54	9.58	99.50	10.02	84
6	99.45	10.45	99.41	10.89	99.36	11.32	99.31	11.75	83
7	99.25	12.19	99.20	12.62	99.14	13.05	99.09	13.49	82
8	99.03	13.92	98.97	14.85	98.90	14.78	98.84	15.21	81
9	98.77	15.64	98.70	16.07	98.63	16.50	98.56	16.93	80
10	98.48	17.36	98.40	17.79	98.33	18.22	98.25	18.65	79
11	98.16	19.08	98.08	19.51	97.99	19.94	97.90	20.36	78
12	97.81	20.79	97.72	21.22	97.63	21.64	97.53	22.07	77
13	97.44	22.50	97.34	22.92	97.24	23.34	97.13	23.77	76
14	97.03	24.19	96.92	24.62	96.81	25.04	96.70	25.46	75
15	96.59	25.88	96.48	26.30	96.36	26.72	96.25	27.14	74
16	96.13	27.56	96.00	27.98	95.88	28.40	95.76	28.82	73
17	95.63	29.24	95.50	29.65	95.37	30.07	95.24	30.49	72
18	95.11	30.90	94.97	31.32	94.83	31.73	94.69	32.14	71
19	94.55	32.56	94.41	32.97	94.26	33.38	94.12	33.79	70
20	93.97	34.20	93.82	34.61	93.67	35.02	93.51	35.43	69
21	93.36	35.84	93.20	36.24	93.04	36.65	92.88	37.66	68
22	92.72	37.46	92.55	37.86	92.39	38.27	92.22	38.67	67
23	92.05	39.07	91.88	39.47	91.71	39.87	91.53	40.27	66
24	91.35	40.67	91.18	41.07	91.00	41.47	90.81	41.87	65
25	90.63	42.26	90.45	42.66	90.26	43.05	90.07	43.44	64
26	89.88	43.84	89.69	44.23	89.49	44.62	89.30	45.01	63
27	89.10	45.40	88.90	45.79	88.70	46.17	88.50	46.56	62
28	88.29	46.95	88.09	47.33	87.88	47.72	87.67	48.10	61
29	87.46	48.48	87.25	48.86	87.04	49.24	86.82	49.62	60
30	86.60	50.00	86.38	50.38	86.16	50.75	85.94	51.13	59
31	85.72	51.50	85.49	51.88	85.26	52.25	85.04	52.62	58
32	84.80	52.99	84.57	53.36	84.34	53.73	84.10	54.10	57
33	83.87	54.46	83.63	54.83	83.39	55.19	83.15	55.56	56
34	82.90	55.92	82.66	56.28	82.41	56.64	82.16	57.00	55
35	81.92	57.36	81.66	57.71	81.41	58.07	81.16	58.42	54
36	80.90	58.78	80.64	59.13	80.39	59.48	80.13	59.83	53
37	79.86	60.18	79.60	60.53	79.34	60.88	79.07	61.22	52
38	78.80	61.57	78.53	61.91	78.26	62.25	77.99	62.59	51
39	77.71	62.93	77.44	63.27	77.16	63.61	76.88	63.94	50
40	76.60	64.28	76.32	64.61	76.04	64.94	75.76	65.28	49
41	75.47	65.61	75.18	65.93	74.90	66.26	74.61	66.59	48
42	74.31	66.91	74.02	67.24	73.73	67.56	73.43	67.88	47
43	73.14	68.20	72.84	68.52	72.54	68.84	72.24	69.15	46
44	71.93	69.47	71.63	69.78	71.33	70.09	71.02	70.40	45
45	70.71	70.71							
Degrees.	Dep.	Lat.	Dep.	Lat.	Dep.	Lat.	Dep.	Lat.	Degrees.
	DEGREES.		¼ DEGREE.		½ DEGREE.		¾ DEGREE.		

Published by H. S. CROCKER COMPANY, Stationers, Drawing Materials,
Mathematical Instruments, etc., San Francisco.