

273

273

400

LIBRARY

F.B. 273

Table showing the difference of latitude and departure in running 80 chains at any course from 1 to 60 minutes.

273

273

MINUTES	LKS.	MINUTES	LKS.	MINUTES	LKS.
1	2 1/3	21	49	41	95 2/3
2	4 2/3	22	51 1/3	42	98
3	7	23	53 2/3	43	100 1/3
4	9 1/3	24	56	44	102 2/3
5	11 2/3	25	58 1/3	45	105
6	14	26	60 2/3	46	107 1/3
7	16 1/3	27	63	47	109 2/3
8	18 2/3	28	65 1/3	48	112
9	21	29	67 2/3	49	114 1/3
10	23 1/3	30	70	50	116 2/3
11	25 2/3	31	72 1/3	51	119
12	28	32	74 2/3	52	121 1/3
13	30 1/3	33	77	53	123 2/3
14	32 2/3	34	79 1/3	54	126
15	35	35	81 2/3	55	128 1/3
16	37 1/3	36	84	56	130 2/3
17	39 2/3	37	86 1/3	57	133
18	42	38	88 2/3	58	135 1/3
19	44 1/3	39	91	59	137 2/3
20	46 2/3	40	93 1/3	60	140

Return to City Engineers Office
City Hall, San Diego, Cal.

TABLE FOR RUNNING ON SLOPES.

In the following table the first column shows the angle, the second the number of links to be added to a chain on the slopes, to make one chain, horizontal measurement.

Angle	COR. IN LINKS	Angle	COR. IN LINKS	Angle	COR. IN LINKS	Angle	COR. IN LINKS
0		0		0		0	
4	0.24	11	1.88	18	5.14	25	10.54
5	0.38	12	2.24	19	5.76	26	11.26
6	0.55	13	2.63	20	6.42	27	12.24
7	0.76	14	3.06	21	7.11	28	13.37
8	0.98	15	3.53	22	7.85	29	14.34
9	1.24	16	4.02	23	8.64	30	15.47
10	1.55	17	4.56	24	9.47	35	22.07

Return to City Engineers Office
City Hall, San Diego, Cal.

FROM
Loring's Book Store

Levels on "G" St. 25th to 26th

July 9 1906

1
Schmitt
Haslam
Butler

POSTED

B.M. 0.70 H.I. 175.35 174.65

E. line 25th

N. line 2.8 172.6

C 4.2 171.2

S. line 5.0 170.4

50' E

S. line 6.1 169.3

C 5.5 169.9

N. line 4.7 170.7

100' E

N. line 10.8 164.6

C 10.3 165.1

S. line 11.2 164.2

J.P. 0.63 H.I. 163.59 12.39 162.96

130' E

S. line 2.9 160.7

163,59

West line alley

So. line	10.5	153.1
c	5.2	158.4
N. line	6.7	156.9

5' East. Center alley

c	8.5	155.1
---	-----	-------

E. line alley

N. line	9.8	153.8
c	10.8	152.8
So. line	15.0	148.6

J.P.	0.41	151.20	12.80	150.79
------	------	--------	-------	--------

50' E alley

So. line	10.3	140.9
c	7.8	143.4
N. line	4.6	146.6

100' E

N. line	10.9	140.3		
J.P.	0.84	139.22	12.82	138.38

1392.2

100' E

c	2.9	136.3
---	-----	-------

So. line	7.3	131.9
----------	-----	-------

120' E

N. line	1.6	137.6
---------	-----	-------

135' E

So. line	17.3	121.9
----------	------	-------

150' E

So. line	14.9	124.3
----------	------	-------

c	13.2	126.0
---	------	-------

N. line	8.7	130.5
---------	-----	-------

170' E

c	16.0	123.2
---	------	-------

199' E

N. line	13.8	125.4
---------	------	-------

200' E

N. line	11.2	128.0
---------	------	-------

c	9.6	129.6
---	-----	-------

So. line	8.6	130.6
----------	-----	-------

2

250' E POSTED

3

		H.I.		
T.P.	041	151.20	12.80	150.79
W. line			11.6	139.6
C			12.2	139.0
S. line			13.2	138.0
		H.I.		
T.P.	063	163.59	12.39	162.96

300' E

S. line			14.0	149.6
C			13.0	150.6
W. line			11.5	152.1
		H.I.		
T.P.	070	175.35		174.65

350' E, alley

W. line			13.4	162.0
C			14.9	160.5
S. line			15.2	160.2
(402) E	W. line		26 th	
S. line			4.8	170.6
C			3.2	172.2
W. line			1.4	174.0

"B" Street Levels

POSTED

B.M.	0.10	H.I. 176.91	176.81	⊕
E. line 32 nd St				
So. line			0.1 176.8	
C			3.8 173.1	
N. line			10.1 166.8	
50' E				
So. line			12.0 164.9	
J.P.	0.19	H.I. 164.63	124.7 164.44	
50' E				
C			4.4 160.2	
N. line			10.5 154.1	
J.P.	0.28	H.I. 152.28	126.3 152.00	
100' E				
So. line			3.9 148.4	
C			7.7 144.6	
N. line			11.2 141.1	
J.P.	0.01	H.I. 139.49	12.80 139.49	

July 13 1906 ⁴ Gloulds Haslam Butler

150' E				
So. line			6.2 133.3	
C			10.1 129.4	
N. line			13.2 126.3	
J.P.	0.89	H.I. 127.50	12.88 126.61	
200' E				
N. line			12.0 115.5	
C			7.4 120.1	
So. line			6.4 121.1	
226' E				
So. line			11.6 115.9	
232' E				
N. line			15.7 111.8	
250' E				
N. line			15.1 112.4	
C			15.7 111.8	
So. line			14.1 113.4	

	267' E		
C		18.3	109.2
	300' E		
Sol. line		19.5	108.0
C		15.2	112.3
M. line		10.8	116.7
	312' E	11.7	
Sol. line		17.5	110.0
	350' E		
Sol. line		6.2	121.2
J.P.	0.1	H.I. 139.49	1250 139.48
	350' E		
M. line		11.7	127.8
C		14.2	125.3
	400' E		
Sol. line		11.8	127.7
C		8.1	131.4
M. line		5.0	134.5

	450' E		
M. line		4.9	134.6
C		6.6	132.9
Sol. line		9.9	129.6
J.P.	5.50	H.I. 132.29	12.70 126.79
	500' E		
M. line		5.6	126.7
C		10.0	122.3
Sol. line		13.5	118.8
	507' E		
Sol. line		16.9	115.4
	513' E		
C		15.6	117.7
	528' E		
Sol. line		9.9	122.4
	530' E		
M. line		8.9	123.4
	541' E		
M. line		12.6	119.7

550' E

Sodine		4.0	128.3
C		3.2	129.1
N. line		7.8	124.5
J.P.	10.71	H.I. 142.04	0.96 131.33

600' E West line 33rd

N. line		6.5	135.5
C		5.9	136.1
Sodine		6.42	135.62

Center 33rd

Sodine		1.6	140.4
C		1.1	140.9
N. line		1.3	140.7
J.P.	12.72	H.I. 154.44	0.32 141.72

E. line 33rd

N. line		11.2	143.2
C		9.5	144.9
Sodine		9.5	144.9

50' E

Sodine		4.7	149.7
C		4.5	149.9
N. line		4.9	149.5
J.P.	12.64	H.I. 166.66	0.42 154.02

100' E

N. line		12.0	154.7
C		11.9	154.8
Sodine		13.3	153.4

150' E

Sodine		8.4	158.3
C		7.4	159.3
N. line		7.4	159.3
J.P.	12.71	H.I. 179.38	-0.01 166.67

200' E

Sodine		14.0	165.4
C		14.0	165.4
N. line		12.9	166.5

Hub
B.M.

179.38

250' E

n. line	4.9	174.5
c	6.1	173.3
So. line	7.0	172.4

300' E

So. line	3.3	176.1
c	1.4	178.0

J.P.	9.56	H.I. 188.21	0.73	178.65
------	------	-------------	------	--------

300' E

n. line	8.9	179.3
---------	-----	-------

350' E

n. line	5.9	182.3
c	7.8	180.4

So. line	10.4	177.8
----------	------	-------

400' E

So. line	8.7	179.5
c	6.2	182.0
n. line	3.8	184.4

188.21

450' E

n. line	4.2	184.0
c	6.3	181.9
So. line	8.7	179.5

500' E

So. line	8.1	180.1
c	6.0	182.2

n. line	3.6	184.6
---------	-----	-------

550' E

n. line	2.6	185.6
---------	-----	-------

c	4.3	183.9
---	-----	-------

So. line	6.8	181.4
----------	-----	-------

600' E (West line 34th)

So. line	10.0	178.2
----------	------	-------

c	7.6	180.6
---	-----	-------

n. line	5.39	182.82
---------	------	--------

Hub
B.M.

18821

Center 34th

N. line		9.6	178.6
C		12.2	176.0
So. line		14.6	173.6
J.P.	2.34	^{H.I.} 178.01	12.54 175.67

E. line 34th

So. line		9.5	168.5
C		5.3	172.7
N. line		1.9	176.1
	50' E		
N. line		4.1	173.9
C		8.9	169.1
So. line		14.3	163.7

100' E

So. line		15.8	162.2
C		8.2	170.8
N. line		3.3	175.7

178.01

8

150' E

N. line		1.3	176.7
C		7.0	171.0
So. line		12.7	165.3

200' E

So. line		13.3	164.7
C		8.1	169.9
N. line		4.2	173.8

250' E

N. line		11.0	167.0
C		13.9	164.1
So. line		17.6	160.4

J.P.	1.91	^{H.I.} 166.88	13.04	164.97
------	------	------------------------	-------	--------

300' E

N. line		8.4	158.5
C		11.7	154.2
So. line		13.2	153.7

J.P.	0.08	H.I. 154.19	1277	154.11
			323' E	
N. line			4.5	149.7
J.P.	0.02	H.I. 141.36	1285	141.34
			350' E	
N. line			7.5	133.9
C			10.4	131.0
S. line			13.6	127.8
J.P.	-0.02	H.I. 128.60	1274	128.62
J.P.	0.16	H.I. 116.45	1231	116.29
			400' E	
N. line			10.7	105.8
C			12.0	104.5
S. line			15.9	100.6
J.P.	0.25	H.I. 104.25	1245	104.00
J.P.	0.23	H.I. 91.87	1261	91.64

			450' E	
N. line			6.1	85.8
C			8.5	83.4
S. line			9.4	82.5
J.P.	0.94	H.I. 79.81	13.00	78.87
			500' E	
S. line			6.2	73.6
C			4.8	75.0
N. line			3.5	76.3
			550' E	
N. line			7.6	72.2
C			10.2	69.6
S. line			11.4	68.4
			600' E (W. line 35 th)	
S. line			13.7	66.1
C			12.3	67.5
N. line			9.9	69.9

79.81

Center 35th

N. line	10.7	69.1
C	12.3	67.5
S. line	13.8	66.0

E. line 35th

S. line	14.0	65.8
C	12.6	67.2
N. line	10.9	68.9

50' E

N. line	11.9	67.9
C	14.4	65.4
S. line	14.5	65.3

90' E

S. line	14.6	65.2
---------	------	------

100' E

S. line	16.6	63.2	creek
C	13.8	66.0	
N. line	13.1	66.7	

10

150' E

N. line	13.7	66.1	
C	15.7	64.1	creek
S. line	15.0	64.8	

155' E

N. line	15.4	64.4	creek
---------	------	------	-------

200' E

N. line	15.9	63.9	creek
C	13.4	66.4	
S. line	12.9	66.9	

250' E

S. line	4.3	75.5
C	6.6	73.2
N. line	12.6	67.2

260' E

N. line	13.5	66.3
---------	------	------

264' E

N. line	6.4	73.4
---------	-----	------

J.P.	0.23	N.I. 91.97	12.61	91.64
------	------	---------------	-------	-------

294' E POSTED

n. line

9.5 82.4

C

5.4 86.5

J.P.

0.25

H.I.

104.25

12.45

104.00

294' E

Schulz

9.5 94.8

Levels on 9th street bet

POSTED

B.M.	6.90	H.I. 76.50		69.60
71. line B			8.6	67.9
50' N.			7.4	69.1
100' N.			6.0	70.5
150' N.			4.8	71.7
200' N.			2.8	73.7
J.P.	9.34	H.I. 85.50	0.34	76.16
250' N.			6.7	78.8
40. line A			1.4	84.1

A + B 12' from West line

12

Levels on University ave
from 8th to 10th

POSTED

B.M.	4.33	H.I. 288.58	284.25
9' So. of North line			
University ave			
from 8 th to 10 th			
E. line 8 th	4.7	283.9	
50' E	5.0	283.6	
100' E	5.1	283.5	
150' E	5.0	283.6	
200' "	5.0	283.6	
250' "	5.1	283.5	
260' (W. line 9 th)	5.3	283.3	
E. line 9 th	5.4	283.2	
50' E	5.5	283.1	
100' "	5.6	283.0	
150' "	5.3	283.3	
200' "	6.1	282.5	
250' "	5.7	282.9	
260' (W. line 10 th)	5.7	282.9	

Aug. 8, 1906

Builds
Evans **13**
Butler

H.I.
288.58

9' No. of South line University ave
from 8th to 10th

E. line 8 th	4.5	284.1
50' E	5.6	283.0
100' "	5.5	283.1
150' "	5.6	283.0
200' "	5.7	282.9
250' "	5.8	282.8
300' "	5.8	282.8
350' "	5.7	282.9
400' "	5.9	282.7
450' "	6.6	282.0
500' "	8.0	280.6
523.2' "	9.0	279.6

B.M.	3.19	South side	middle of
E. line 10 th	^{N.I.} 293.89	11.3	282.6
50' E			290.71
100' "		10.3	283.6
150' "		9.3	284.6
200' "		8.4	285.5
250' "		7.4	286.5
300' "		6.9	287.0
350' "		6.1	287.8
400' "		5.5	288.4
450' "		4.6	289.3
480' 9" (W. line Vermont)		4.4	289.5
E. line Vermont		3.6	290.3
50' E		3.1	290.8
100' "		2.3	291.6
150' "		1.8	292.1
200' "		1.3	292.6
250' "		0.7	293.2

B.M.	5.20	sidewalk 10' from property line	
	^{N.I.} 301.60		296.40
300' E		8.0	293.6
350' "		7.5	294.1
400' "		7.0	294.6
450' "		6.4	295.2
500' "		5.8	295.8
550' "		5.0	296.6
600' " (W. line Richmond)		4.7	296.9
E. line Richmond		3.8	297.8
50' E		3.3	298.3
100' "		3.0	298.6
150' "		2.6	299.0
200' "		2.1	299.5
250' "		1.9	299.7
300' "		1.4	300.2

10' from property line middeg

H.E. 293.89

200' W			
S. line Cleveland	7.2	286.7	
150' West Vermont	6.8	287.1	
100' W "	5.8	288.1	
50' W "	5.2	288.7	
West line "	4.5	289.4	
E. line "	3.7	290.2	
50' E "	3.2	290.7	
100' " "	2.1	291.8	
150' " "	1.8	292.1	
200' " "	1.4	292.5	
250' "	1.0	292.9	
300' " H.E. 301.60	8.1	293.5	
350' "	7.6	294.0	
400' "	7.0	294.6	
450' "	6.5	295.1	
500' "	5.9	295.7	

sidewalk on north side

301.60 POSTED

15

550' E	5.4	296.2
600' E (West line Richmond)	4.9	296.7
E. line Richmond	4.1	297.5
50' E	3.4	298.2
100' E	3.0	298.6
150' E	2.4	299.2
200' "	2.1	299.5
250' "	1.5	300.1
300' "	0.9	300.7
354' "	0.0	301.6

POSTED Levels on East Side Park
Center of sidewalk

H.I. 324.92

N. line University ave.	6.5	318.4
50' N.	5.9	319.0
100' "	4.2	320.7
150' "	H.I. 335.48	13.3 322.2
200' "	11.4	324.1
250' "	10.8	324.7
300' "	9.7	325.8
350' "	8.9	326.6
400' "	8.5	327.0
450' "	7.7	327.8
500' "	7.1	328.4
550' "	6.0	329.5
600' (to line Lincoln)	4.7	330.8
N. line Lincoln	3.1	332.4
50' N.	2.5	333.0
100' "	1.8	333.7

Boulevard

from University ave. to Eleaphave.

H.I. 347.28

150' N.	13.2	334.1
200' "	12.8	334.5
250' "	12.4	334.9
300' "	11.8	335.5
350' "	11.2	336.1
400' "	10.8	336.5
450' "	10.5	336.8
500' "	10.2	337.1
550' "	9.7	337.6
600' (to line Polk)	9.0	338.3
N. line Polk	8.0	339.3
50' N.	7.2	340.1
100' "	7.2	340.1
150' "	7.0	340.3

Aug. 9, 1906 } ^{to build}
 } ^{chain}
 } ^{to Bull} 16

347.28

200' N	6.8	340.5
250' "	6.3	341.0
300' "	6.3	341.0
350' "	6.2	341.1
400' "	6.5	340.8
450' "	6.9	340.4
500' "	7.1	340.2
550' "	7.6	339.7
600' (Soline Howard)	7.7	339.6
n. line Howard	8.3	339.0
50' N	7.8	339.5
100' N	8.0	339.3
150' N	7.9	339.4
200' N	7.4	339.9
250' N	6.6	340.7
300' N	6.7	340.6
337.3 N.	6.8	340.5

H.I. 324.92 POSTED

West side Park Boulevard 17
Center sidewalk from University ave to

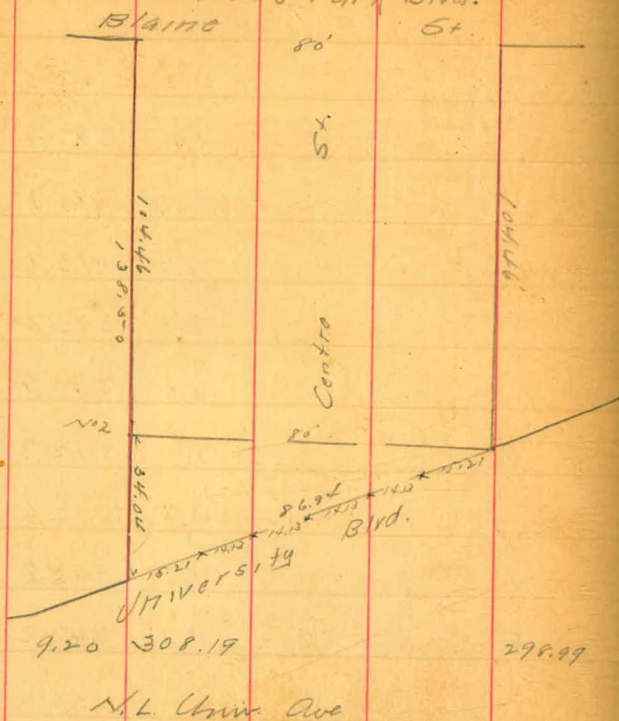
University Boulevard

n. line University ave.	10.9	314.0
50' N	10.4	314.5
100' "	9.4	315.5
150' "	8.2	316.7
200' "	6.7	318.2
250' "	5.3	319.6
300' "	3.5	321.4
350' " H.I. 335.48	13.2	322.3
400' "	11.9	323.6
450' "	10.7	324.8
500' "	9.1	326.4
550' "	7.8	327.7
600' ul	6.5	329.0
639.69 (Soline Lincoln)	5.5	330.0
n. line Lincoln	3.1	332.4
50' N	2.1	333.4

	H.I.	
B.M.	3.17	347.28
		344.11
50' "		
100' "	12.92	334.36
150' "	12.2	335.1
200' "	11.6	335.7
250' "	11.4	335.9
300' "	10.9	336.6
350' "	10.3	337.0
400' "	9.6	337.7
450' " (E. line center pt.)	8.7	338.6
W. line center = (E. line campus)	5.7	341.6
N. line campus	5.1	342.2
	4.9	
50' "	4.8	342.5
100' "	4.0	343.3
150' "	4.1	343.2
200' "	4.4	342.9

	POSTED
	847.28
230' "	4.0 343.3
300' "	4.4 342.9
350' "	4.4 342.9
400' "	4.6 342.7
450' "	4.6 342.7
500' "	4.6 342.7
550' "	5.0 342.3
600' "	4.7 342.6
650' "	4.5 342.8
687.5' E. line University Road.	4.1 343.2

Cross-Section of Centre St
from Univ. Ave to Park Blvd.



E	7.3	300.9
Cl	7.2	301.0
U	6.4	301.8
C	5.2	303.0
U	4.7	303.5
Cl	3.7	304.5
W	2.5	305.7

POSTED

19

N.L. #2 = 184.46' So of Blaine = 34.04' N. of Univ. Ave
on W line of St = Int of E. line with N.L. Univ. Ave

W	3.2	308.0
Cl	4.1	304.1
U	5.0	303.2
C	6.0	302.2
U	6.6	301.6
Cl	6.7	301.5
E	7.3	300.9
75' So Blaine = 29.46' N. of N.L.2		
E	7.6	300.6
Cl	6.4	301.8
U	6.2	302.0
C	6.1	302.1
U	5.9	302.3
Cl	5.2	303.0
W	5.0	303.2

30819

50 S. Blaine

W	3.6	304.6
Ch	4.5	303.7
N	5.5	302.7
C	5.4	302.8
N	6.5	301.7
Ch	7.0	300.9
E	7.4	300.8

25 S. Blaine

E	6.6	301.6
Ch	6.0	302.2
N	6.0	302.2
C	6.4	301.8
N	6.6	301.6
Ch	6.2	302.0
N	5.5	302.7

20

- S. L. Blaine

W	5.5	302.7
Ch	6.4	301.8
N	7.0	301.2
C	7.4	300.8
N	7.8	300.4
Ch	8.2	300.0
E	8.5	299.7

5. Ch. Blaine

E	8.3	299.9
Ch	8.3	299.9
N	7.6	300.6
C	6.7	301.5
N	6.1	302.1
Ch	5.5	302.7
N	5.4	302.8

08

308.19
S¹/₄ Blaine

N	56	302.6
Cl	58	302.4
¹ / ₄	66	301.6
C	74	300.8
¹ / ₄	79	300.3
Cl	83	299.9
E	91	299.1

Ctr Blaine

E	79	300.3
Cl	74	300.8
¹ / ₄	69	301.3
C	62	302.0
¹ / ₄	55	302.7
Cl	49	303.3
W	47	303.5

21

N¹/₄ Blaine

N	52	303.0
Cl	55	302.7
N	63	301.9
C	71	301.1
¹ / ₄	76	300.6
Cl	81	300.1
E	86	299.6

S¹/₄ Blaine

E	84	299.8
Cl	74	300.8
¹ / ₄	64	301.6
C	58	302.4
¹ / ₄	51	303.1
Cl	45	303.7
W	46	303.6

308.19

No. Ch. Blaine

W	4.2	304.0
Ch	4.4	303.8
1/4	4.7	303.5
C	5.6	302.6
1/4	6.2	302.0
Ch	7.4	300.7
E	8.3	299.9

No. line Blaine

E	7.9	300.3
Ch	6.9	301.3
1/4	6.2	302.0
C	5.3	302.9
1/4	4.6	303.6
Ch	4.2	304.0
W	4.0	304.2

2.5 No. Blaine

W	2.3	304.9
Ch	3.7	304.5
1/4	4.5	303.7
C	5.0	303.2
1/4	5.6	302.6
Ch	6.3	301.9
E	7.1	301.1

50 No. Blaine

E	6.3	301.9
Ch	5.8	302.4
W	4.9	303.3
C	3.8	304.4
1/4	3.5	304.7
Ch	3.2	305.0
W	2.6	305.6

308.19

75' No. Blaine

W	2.2	306.0
Cl	2.5	305.7
"	3.1	305.1
C	3.3	304.9
"	4.5	303.7
Cl	5.2	303.0
E	5.7	302.5

100' No. Blaine

E	4.9	303.3
Cl	4.9	303.3
"	4.4	303.8
C	3.6	304.6
"	2.2	306.0
Cl	1.6	306.6
W	1.4	306.8

23

125' No. Blaine

W	0.9	307.3
Cl	1.3	306.9
"	2.1	306.1
C	3.2	305.0
"	3.9	304.3
Cl	4.0	304.2
E	4.0	304.2

T.P. 12.60 316.39 4.46 303.79

100' No. Blaine

E	11.9	304.5
Cl	11.3	303.1
"	10.1	306.3
C	9.8	306.6
"	9.3	307.1
Cl	9.3	307.1
W	8.9	307.5

3/6/39

175 No. Blaine

W	8.4	308.0
U	9.2	307.2
U	9.3	307.1
C	9.9	306.5
U	10.5	305.9
U	11.1	305.3
E	10.9	305.5

200 No. Blaine

E	10.6	305.8
U	10.2	306.2
U	9.7	306.7
C	9.5	306.9
U	8.9	307.5
U	7.8	308.6
W	7.3	309.1

24

225 No. Blaine

W	6.7	309.7
U	7.5	308.9
U	8.2	308.2
C	8.9	307.5
U	9.5	306.9
U	8.8	307.6
E	8.9	307.5

250 No. Blaine

E	9.0	307.4
U	8.7	307.7
U	8.4	308.0
C	7.8	308.6
U	7.4	309.0
U	6.9	309.5
W	6.3	310.1

316.39

275 No Blaine

W	5.6	310.8
Cl	5.5	310.9
14	5.7	310.7
C	6.8	309.6
14	7.9	308.5
Cl	7.4	309.0
E	7.7	308.7

300 No. Blaine

E	6.5	309.9
Cl	6.8	309.6
14	6.6	309.8
C	6.1	310.3
14	4.9	311.5
Cl	4.4	312.0
W	4.8	311.6

25

325 No Blaine

W	3.1	313.3
Cl	4.0	312.4
14	4.3	312.1
C	4.3	312.1
14	3.9	312.5
Cl	4.6	311.8
E	4.9	311.5

350 No Blaine

E	3.1	313.3
Cl	4.2	312.2
14	4.0	312.4
C	3.6	312.8
14	3.6	312.8
Cl	3.0	313.4
W	2.5	313.9

316.39

375 No. Blaine

W	1.4	315.0
U	2.0	314.4
W	2.3	314.1
C	2.5	313.9
W	3.0	313.4
U	2.7	313.7
E	1.9	314.5

400 N. Blaine

E	1.5	314.9
U	1.5	314.9
W	1.6	314.8
C	0.9	315.5
W	0.2	316.2
U	0.7	315.7
W	0.3	316.1

T.P. 11.55 317.58 0.36 316.03

425 No. Blaine

W	10.0	317.6
U	10.2	317.4
W	10.6	317.0
C	11.0	316.6
W	11.5	316.1
U	11.9	315.7
E	11.3	316.3

450 N. Blaine

E	10.4	317.2
U	10.8	316.8
W	10.7	316.9
C	10.2	317.4
W	9.2	318.4
U	8.5	319.1
W	8.6	319.0

327.58
475 No Blaine

W	8.1	319.5
U	8.1	319.5
1/4	8.6	319.0
C	9.3	318.3
1/4	9.5	318.1
U	9.4	318.2
E	8.8	318.8

500 No Blaine

E	8.6	319.0
U	8.2	319.4
1/4	8.6	319.0
C	8.5	319.1
1/4	8.3	319.3
U	7.9	319.7
W	7.7	319.9

27

525 No Blaine

W	7.1	320.5
U	7.4	320.2
W	7.7	319.9
C	7.7	319.9
1/4	7.4	320.2
U	7.6	320.0
E	7.7	319.9

550 No Blaine

E	6.8	320.8
U	6.3	321.3
1/4	5.9	321.7
C	6.5	321.1
1/4	7.1	320.5
U	7.1	320.5
W	7.1	320.5

327.58

575 No. Blair

W	5.1	322.5
U	6.2	321.4
W	6.1	321.5
C	5.9	321.7
W	5.3	322.3
U	5.1	322.5
E	5.2	322.4

600 No. S.L. Lincoln

E	3.4	324.2
U	3.8	323.8
W	4.3	323.3
C	4.7	322.9
W	4.8	322.8
U	4.7	322.9
W	4.0	323.6

28

50 Ct Lincoln

W	4.2	323.4
U	4.4	323.2
W	4.4	323.2
C	3.9	323.7
W	3.5	324.1
U	3.2	324.4
E	2.5	325.1

50 W Lincoln

E	0.8	326.8
U	1.5	326.1
W	2.0	325.6
C	2.5	325.1
W	3.2	324.4
U	3.6	324.0
W	4.2	323.4

18

327.58

Ctr Lincoln

W	3.6	324.0
U	3.0	324.6
W	2.5	325.1
U	2.0	325.6
W	1.7	325.9
U	1.1	326.5
E	0.5	327.1

No 1/4

E	0.4	327.2
U	1.3	326.3
W	1.8	325.8
U	1.9	325.7
W	2.8	324.8
U	3.5	324.1
W	4.4	323.2

T.P. 12.77 338.12 2.23 325.35

29

5' N. of N 1/4 Lincoln

W	13.6	324.5
U	12.5	325.6
W	12.0	326.1
U	11.7	326.4
W	11.0	327.1
U	10.2	327.9
E	9.4	328.7

No Ctr Lincoln

E	8.8	329.3
U	9.6	328.5
W	10.6	327.5
U	11.2	326.9
W	11.7	326.4
U	11.9	326.2
W	12.9	325.2

No line Lincoln

W	12.2	325.9
U	11.3	326.8
W	10.8 ⁵	327.3
U	10.2	327.9
W	9.4	328.7
U	8.6	329.5
E	7.7	330.4

25 No Lincoln

E	6.8	331.3
U	7.7	330.4
W	8.5	329.6
U	8.8	329.3
W	9.6	328.5
U	10.5	327.6
W	11.6	326.5

50 No Lincoln

W	11.1	327.0
U	9.9	328.2
W	9.0	329.1
U	8.2	329.9
W	7.2	330.9
U	6.9	331.2
E	5.8	332.3

75 No Lincoln

E	5.2	332.9
U	6.2	331.9
W	7.1	331.0
U	7.8	330.3
W	8.8	329.3
U	8.5	329.6
W	9.9	328.2

33812

100 No Lincoln

W	11.2	326.9
U	9.1	329.0
W	8.3	329.8
C	6.9	331.2
U	6.2	331.8
U	5.6	332.5
E	4.5	333.6

125 No Lincoln

E	4.0	334.1
U	5.2	332.9
U	6.0	332.1
C	6.4	331.7
U	7.9	330.2
U	8.9	329.2
W	9.5	328.6

31

150 No Lincoln

W	7.9	330.2
U	7.8	330.3
U	7.1	331.0
C	5.7	332.4
U	5.6	332.5
U	5.0	333.1
E	4.1	334.0

175 No Lincoln

E	4.2	333.9
U	4.9	333.2
U	4.9	333.2
C	5.5	332.6
U	6.2	331.8
U	6.6	331.3
W	7.1	331.0

33812

200 No Lincoln

W	4.4	333.7
U	5.8	332.3
U	6.0	332.1
U	5.3	332.8
U	5.1	333.0
U	4.6	333.5
E	4.2	333.9

225 No Lincoln

E	3.9	334.2
U	4.3	333.8
U	4.6	333.5
C	4.5	333.6
U	5.0	333.1
U	4.8	333.3
W	2.7	335.4

32

250 No Lincoln

W	2.6	335.5
U	3.8	334.3
U	4.1	334.0
C	3.5	334.6
U	3.7	334.4
U	3.7	334.4
E	3.3	334.8

275 No Lincoln

E	2.6	335.5
U	2.8	335.3
U	2.9	335.2
C	2.8	335.3
U	3.0	335.1
U	2.5	335.6
W	1.9	336.2

300' No Lincoln

W	1.1	337.0
U	1.3	336.8
W	1.7	336.4
C	2.2	335.9
W	2.1	336.0
U	2.1	336.0
E	1.7	336.4

7.92 344.77 1.27 336.88

325' No Lincoln

E	7.7	337.1
U	8.0	336.8
W	7.7	337.1
C	7.2	337.6
W	7.2	337.6
U	7.0	337.8
W	6.9	337.9

350' No Lincoln

W	6.0	338.8
U	6.3	338.5
W	6.0	338.5
C	6.0	338.8
W	7.4	337.4
U	7.5	337.3
E	7.2	337.6

375' No Lincoln

E	6.7	338.1
U	6.9	337.9
U	6.8	338.0
C	5.6	339.2
W	5.7	339.1
U	5.9	338.9
W	5.6	339.2

344.77

400' No Lincoln

W	4.9	339.9
U	5.3	339.5
1/4	5.5	339.3
O	5.6	339.2
1/4	6.3	338.5
U	6.2	338.6
E	6.1	338.7

417' No lat. of W.L. Park Blvd with E.L. Centre St.

E	6.0	338.8
ch	5.7	339.1
1/4	5.7	339.1
C	5.8	339.0
1/4	5.8	339.0
ch	4.9	339.9
W	4.5	340.3

See Diagram Page 35

34

449.04' No Lincoln

W	5.0	339.8
U	5.4	339.4
1/4	5.1	339.7
C	4.9	339.9
1/4	5.0	339.8
E Ch = W.L. P Blvd.	5.1	339.7

478.77' No Lincoln

W	4.9	339.9
U	4.8	340.0
1/4	4.8	340.0
U	4.6	340.2
1/4 = W.L. P Blvd	4.7	340.1

508.50' No Lincoln

W	3.7	341.1
U	3.3	341.5
1/4	3.3	341.5
Ch = W.L. P Blvd.	3.2	341.6

344.77

538.23' N. Lincoln

W	3.5	341.3
Ch	3.6	341.2
1/4 - W.L.P. Blvd.	3.3	341.5

567.96' N. Lincoln

W.	2.8	342.0
Ch. W.L.P. Blvd.	3.2	341.6

600' N. of Lincoln = Int. of N. Line
of Centre St with S.L. Campus & W.L.P. Blvd.

	2.9	341.9
TP. 5.43	349.61	0.59 344.18
Ch. B.M.	5.49	344.12 (344.11)

Campus

600' N. - S.L. Campus

567.96' No

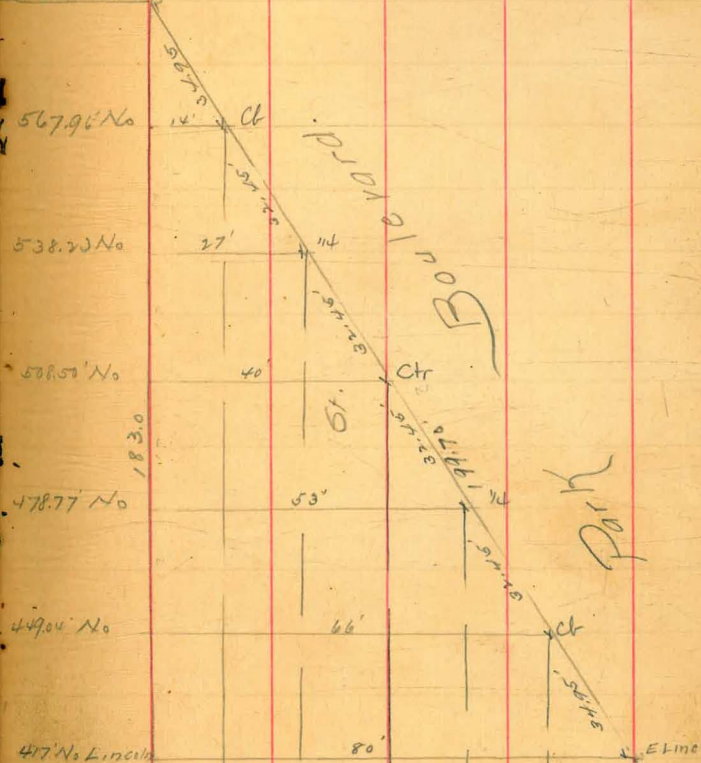
538.23' No

508.57' No

478.77' No

449.04' No

417' N. Lincoln



Centre

POSTED

Levels on West line Park

Boulevard
H.I. 347.58

Rod

+ on University Boulevard

Levels
Evans
Haslam

Oct. 6 1906

36

Rod

So. line garden	5.2	342.4
100' S	5.4	342.2
200' S	5.7	341.9
300' S	5.8	341.8
400' S	5.7	341.9
423 S. Int. University Boulevard	5.3	342.3
500' S	5.8	341.9
600' S	4.4	343.2
623.7 S north line canyon	4.3	343.3
700 S	3.1	344.5
800' S	2.5	345.1
J.P. 4.34 H.I. 349.72	2.20	345.38
900' S	5.3	344.4
1000 S	5.5	344.2
1100 S	5.0	344.7
1200 S	5.3	344.4
1300 S	5.3	344.4

1400' S	5.3	344.4
1500 S	5.4	344.3
1601. S north line campus	5.1	344.6

POSTED Levels on Maryland
from Lincoln north.

B.M. & N.E. cor. ^{H.I.} 304.50 ✓ 4.42 300.08

Spk. in Tel. pole Maryland & Lincoln.

West line Maryland

N. line Lincoln ^{H.I.} 304.50 6.4 298.1

50' north 7.9 296.6

So. line Buchanan 10.3 294.2

Center " 11.3 293.2

Center + 5' 11.6 292.9

Center Maryland

N. line Lincoln 5.6 298.9

30' N. 5.4 292.1

50' N. 7.6 296.9

100' N. 7.1 297.4

150' N. 8.9 295.6

170' N. 9.4 295.1

190' N. 12.0 292.5

Schields
Evans
Haslam

Oct. 9. 1906

317

East line Maryland

N. line Lincoln 5.3 299.2

50' N. 5.2 299.3

100' N. 5.3 299.2

140' N (So. line alley) 4.9 299.6

160' N (N. line alley) 6.0 298.5

200' N 7.5 297.0

215' N 7.7 296.8

T.P. ^{H.F.} 0.21 292.51 ✓ 12.20 292.30

250' N 2.3 290.2

Center Maryland

200' N Lincoln 4.1 288.4

West line Maryland

N. line Buchanan 11.4 281.1

150' N 3.9 288.6

Center Maryland

350' N Lincoln 10.1 282.4

292.51

38

J.P. 0.93 ^{H.I.} 280.67 / 12.77 279.74

East line Maryland

310' N Lincoln 5.8 274.9

300' N " 11.0 269.7

Center Maryland

250' N Lincoln 6.8 273.9

J.P. 1.78 ^{H.I.} 269.76 / 12.69 267.98

West line Maryland

50' N Buchanan 6.4 263.4

83' N " 13.0 256.8

100' N " 3.8 266.0

Center Maryland

300' N Lincoln 9.8 260.0

East line Maryland

322' N Lincoln 8.1 261.7

B.M. 3.53 301.76

Hub N.E. Cor. Maryland & Tyler
266.25

292.51

38

J.P. 13.06 ^{H.I.} 305.29 / 0.28 292.23

West line Maryland

170' N Buchanan 11.5 293.8

200' N " 7.2 298.1

210' N " 6.6 298.7

260' N " 5.1 300.2

310' N " 3.5 301.8

360' N " 3.3 302.0

410' N " 3.4 301.9

460' N " 4.1 301.2

510' N " 5.7 299.6

560' N So. line Cornsld. 8.6 296.7

N. line " " 12.0 293.3

50' N " 10.9 294.4

100' N " 9.3 296.0

East line Maryland

395' N Lincoln 10.2 295.1

400' N " 9.4 295.9

450' N Lincoln	5.6	299.7
475' N So. line Tyler	4.7	300.6
Center Tyler	3.9	301.4
71. line Tyler	3.5	301.8
50' N "	3.6	301.7
100' N "	3.1	302.2
150' N "	5.2	300.1
200' N "	5.2	300.1
230' N "	4.0	301.3
250' N "	4.2	301.1
300' N "	3.5	301.8
350' N "	2.4	302.9

Center Maryland

375' N Lincoln	12.0	293.3
400' N "	7.9	297.4
458' N " So. line Tyler	4.5	300.8
Center Tyler	3.6	301.7
71. line Tyler	3.0	302.3
50' N "	3.0	302.3

100' N Tyler	4.2	301.1
150' N "	5.7	299.6
200' N "	7.3	298.0
250' N "	7.4	297.9
300' N "	7.2	298.1
350' N "	5.3	300.0
J.P. 6.85	303.15	8.99 296.30 ✓

East line Maryland

360' N Tyler	1.6	301.6
500' N "	1.8	301.4
510' N "	0.0	303.2
530' N "	0.4	302.8
550' N "	4.1	299.1
565' N "	5.4	297.8
600' N " So. line Van Buren	2.5	300.7

West line Maryland

130' N Arnold Pl.	8.7	294.5
150' N "	14.0	289.2

320' n Arnold ^{So. line Van Buren} 12.0 291.2
_{Produced}

Center Van Buren produced 1.3 301.9

Center Maryland

393' n. Tyler 4.2 299.0

400' n " 7.0 296.2

600' n So. line Van Buren 8.8 294.4

J.P. 0.23 ^{H.I.} 290.91 1247 290.68 ✓

300' n West line Maryland

300' n Arnold Pl. 6.1 284.8

Center Maryland

500' n. Tyler 5.3 285.6

330' n " 3.0 287.9

550' n " 6.2 284.7

565' n " 7.0 283.9

East line Maryland

400' n Tyler 2.0 288.9

425' n " 11.7 279.2

450' n " 3.6 287.3

J.P. 0.13 279.25 12.79 278.12

West line Maryland

186' n Arnold Pl. 5.9 272.4

200' n " 16.2 262.1

250' n " 10.0 268.3

265' n " 10.5 267.8

Center Maryland

450' n. Tyler 2.7 275.6

460' n " 7.8 270.5

J.P. 12.77 ^{H.I.} 315.34 0.58 ~~277.67~~ 302.57

West line Maryland

(North line Tyler) Van Buren 10.0 305.3
_{Produced}

50' n " 8.6 306.7

100' n " 6.0 309.3

110' n " 5.7 309.6

150' n " 5.9 309.4

200' n " 7.4 308.9

East line Maryland

Center Van Buren	9.2	306.1
n. line "	6.5	308.8
30' n "	3.4	311.9
100' n "	1.7	313.6
150' n "	0.6	314.7
B.M.	6.51	308.83

Hub N.E. Cor Maryland & Van Buren

Center Maryland

15' n. of So. line Van Buren	14.2	301.1
Center Van Buren	11.1	304.2
n. line Van Buren	9.4	305.9
50' n "	6.3	309.0
60' n "	5.0	310.3
100' n "	4.6	310.7
140' n "	1.9	313.4
150' n "	2.1	313.2
160' n "	3.1	312.2

200' n. Van Buren	2.0	313.8
230' n "	1.3	314.0
250' n "	2.3	313.0
290' n "	9.5	305.8

J.P.	1.62	304.50	1246	302.88
------	------	--------	------	--------

West line Maryland

250' n Van Buren Produced	10.7	293.8
275' n "	17.3	287.2
300' n "	4.5	300.0

Center Maryland

300' n Van Buren	7.9	296.6
305' n "	10.8	293.7

East line Maryland

340' n Van Buren	1.1	303.4	
J.P.	12.28	321.11	308.83 B.M.

East line Maryland

200' n Van Buren	5.2	315.9
250' n "	3.7	317.4

321.11

290' N Van Buren	3.9	317.2
300' N "	6.3	314.8
350' N "	11.6	309.5

Center Maryland

350' N Van Buren	7.5	313.6
365' " "	1.1	320.0

West line Maryland

337' N Van Buren Produced	4.4	316.7
350' N "	3.2	317.9
400' N "	0.7	320.4
J.P. 13.02	^{H.I.} 0.11	321.00

E. line Maryland

380' N Van Buren	12.2	321.8
400' N "	9.8	324.2
450' N "	7.4	326.6
500' N "	4.5	329.5
550' N "	2.6	331.4
600' N So. line meade	-0.1	334.1

334.02

42

West line Maryland

450' N Van Buren Produced	10.3	328.7
500' N "	7.9	326.1

550' N "	5.8	328.2
----------	-----	-------

600' N So. line Arch	3.1	330.9
----------------------	-----	-------

B.M.)	3.08	330.94 ✓
-------	------	----------

M Hub S.W. cor. Maryland & Arch St.

Center Maryland

400' N Van Buren	11.2	322.8
------------------	------	-------

450' N "	8.1	325.9
----------	-----	-------

500' N "	5.9	328.1
----------	-----	-------

550' N "	4.2	329.8
----------	-----	-------

600' N So. line meade	1.9	332.1
-----------------------	-----	-------

Oct. 24 1906

J.P.	12.06	H.I. 343.50	330.94	B.M.
West line Maryland				
Center arch		11.2	332.3	
No. line arch		8.8	334.7	
50' n.		5.0	338.5	
100' n.		2.8	340.7	
150' n.		1.5	342.0	
200' n.		1.0	342.5	
250' n.		0.8	342.7	

East line Maryland

Center meade		6.6	336.9	
N. line "		3.8	339.7	
50' n.		2.2	341.3	
100' n.		1.2	342.3	
150' n.		0.6	342.9	

343.50

holds
Bruns
Haslam 43

Center Maryland

Center meade		8.8	334.7	
N. line "		6.6	336.9	
50' n.		3.6	339.9	
100' n.		1.6	341.9	
150' n.		0.6	342.9	
J.P.	5.13	H.I. 348.03	0.60	342.90

Center Maryland

200' n meade		4.8	343.2	
250' n.		4.4	343.6	
300' n.		4.2	343.8	
350' n.		4.2	343.8	
400' n.		4.7	343.3	
450' n.		4.7	343.3	
500' n.		4.4	343.6	
550' n.		4.6	343.4	
600' n (to line Monroe)		4.7	343.3	

348.03

Center Maryland

Center mineral	4.8	343.2
No. line "	4.0	344.0
50' n "	3.7	344.3
100' n "	4.6	343.4
150' n "	6.7	341.3
200' n "	9.2	338.8
250' n "	11.4	336.6
300' n "	13.4	334.6
350' n "	13.0	335.0
400' n "	9.4	338.6
450' n "	4.7	343.3
500' n "	2.6	345.4
550' n "	1.0	347.0
600' n (Solus mineral)	0.2	347.8

East line Maryland

200' n meade	4.5	343.5
250' n "	3.6	344.4

348.03

44

300' n meade	4.2	343.8
350' n "	2.8	345.2
375' n "	4.8	343.2
400' n "	4.2	343.8
450' n "	3.4	344.6
500' n "	3.9	344.1
550' n "	2.1	345.9
600' n (Solus mineral)	3.3	344.7
Center mineral	3.5	344.5
No. line "	2.8	345.2
50' n "	2.5	345.5
100' n "	2.7	345.3
125' n "	2.0	346.0
150' n "	4.7	343.3
200' n "	6.1	341.9
250' n "	7.0	341.0
300' n "	7.7	340.3
350' n "	7.6	340.4
400' n "	5.0	343.0
450' n "	2.7	345.3

348.03

East line Maryland

500' N mound	1.4	346.6
550' N "	1.2	346.8

West line Maryland

300' N arch	5.1	342.9
350' N "	4.9	343.1
400' N "	5.1	342.9
450' N "	5.6	342.4
500' N "	6.0	342.0
550' N "	5.7	342.3
600' N (Soline arch)	5.0	343.0
+23'	5.8	342.2
+25'	8.5	339.5
+30' center arch	8.2	339.8
+56'	8.1	339.9
+60' N line arch	5.9	342.1
50' N "	4.6	343.4
700' N "	5.1	342.9

348.03

45

150' N arch	6.9	341.1
200' N "	9.7	338.3
240' N "	13.6	334.4

N. line - Oklahoma	6.4	341.6
20' N "	5.5	342.5
70' N "	2.3	345.7
120' N "	1.6	346.4
170' N "	1.7	346.3

220' N (Soline medium)	1.54	346.49	B.M.
J.P.	0.34	335.44	H.E. 12.93 335.10

West line Maryland

250' N arch	3.3	332.1
Soline	11.0	

J.P.	2.75	325.15	H.E. 13.04 322.40
------	------	--------	-------------------

West line Maryland

300' N arch	5.2	320.0
327' N "	11.9	313.3
350' Soline Oklahoma	0.7	324.5

J

J.P.

6.88 353.37

H.I.

346.49 B.M.

West line Maryland

Center Madison	5.1	348.3
No. line "	5.4	348.0
50' M "	5.2	348.2
80' M "	5.0	348.4
100' M "	3.5	349.9
150' M "	5.6	347.8
185' M "	3.4	350.0
200' M "	5.0	348.4
210' M "	5.6	347.8
300' M "	5.2	348.2
350' M "	6.1	347.3
370' M "	5.5	347.9
400' M "	7.2	346.2
425' M "	8.4	345.0
450'	9.7	344.7
475'	12.5	340.9

353.37

46

East line Maryland

So. line Madison	5.7	347.7
center "	4.7	348.7
No. line Madison	5.2	348.2
50' M "	4.9	348.5
100' M "	3.5	349.9
150' M "	4.2	349.2
175' M "	2.5	350.9
200' M "	4.4	349.0
250' M "	4.4	349.0
300' M "	5.2	348.2
350' M "	6.4	347.0
400' M "	7.0	346.4
425' "	8.3	345.1
450' "	9.0	344.4
475' "	11.2	342.2

POSTED

353.37

Center Maryland

47

Center Madison	4.9	348.5
No. line "	4.7	348.6
50' "	4.5	348.8
100' "	4.5	348.8
150' "	4.6	348.7
200' "	4.3	349.1
250' "	4.3	349.1
300' "	5.0	348.4
350' "	5.6	347.8
400' "	6.6	346.8
425' "	7.8	345.6
450' "	8.9	344.5
475' "	11.0	342.4

Profile Georgia
Univ Ave - Olive - POSTED

291 342.6
BM. Sub SE Univ-Georgia 338.7
S. h Univ w of Georgia

50

100

150

200

250

300

350

400

450

500

650

T.P. 0.19 330.12 12.67 329.93

500

550

600 N. h Olive -

E

11/9/06

Match
meets

C

48

3.6 339.0 4.1 338.5 5.4 337.2

2.5 340.1 3.4 339.2 5.2 337.4

3.3 339.3 3.5 339.1 4.9 337.7

1.9 340.7 3.4 339.2 4.3 338.3

3.0 339.6 3.4 339.2 4.4 338.2

3.4 339.2 4.1 338.5 4.6 338.0

4.6 338.0 4.8 337.8 4.5 337.8

6.1 336.5 6.0 336.6 4.7 337.9

8.1 334.5 7.0 335.6 4.5 338.1

12.9 329.7 7.4 334.7 5.3 337.3

- 8.7 333.9 6.5 336.1

- 12.4 330.2

5.1 325.0 - -

11.4 318.7 4.1 327.0

- 11.9 318.2 8.74 321.36

sub.

330.12
T.P. 337 320.97 1239 317.60

600 N-L Olive

Cr. olive

5' S of Cr.

54 Olive

Olive from Georgia - Park.

50' W of Georgia

100

125

140 Alley

160 "

200

225

250

256

277

300

E.L. Park Boulevard.

E

C

W 49

321
25
96 85

9.2	311.8	—	—	—	—
11.3	309.7	8.3	312.7	6.5	314.5
—	—	8.9	312.1	8.2	312.8
—	—	12.3	308.7	12.5	308.5
14.0	307.0	13.3	307.7	12.4	308.6

S

C

N

12.1	308.9	6.3	314.7	0.6	320.4
11.9	309.1	7.6	313.4	3.7	317.3
—	—	8.0	312.0	—	—
10.3	310.7	12.3	308.7	5.2	315.8
9.5	311.5	12.7	308.3	5.2	315.8
7.8	313.2	11.9	309.1	4.1	316.9
—	—	—	—	5.1	315.9
2.9	318.1	11.1	309.9	11.1	309.9
—	—	7.5 Bottom	311.5	—	—
—	—	2.5 Top	318.5	—	—
6.8	314.2	5.9	315.1	4.2	316.8
—	—	—	—	5.5	315.5

Cross Section of Front St from
S.L. Thorn to South.

50

POSTED

255. Thorn

0.14	254.98		254.84
0.74	242.92	12.80	242.18
50'50 of Thorn			
EL.		5.5	237.4
Ch.		11.5	
25'50 of Thorn			
EL.		12.7	230.2
S.L. Thorn			
EL.		6.7	236.2
Ch		7.6	
14		11.0	
T.P.	0.53	230.51	12.94 229.98
60'50 Thorn			
EL		2.5	
Ch		4.4	226.1
24		7.2	
Ch		8.7	
W.L.		10.0	220.5

EL.		8.3	
14		9.6	
C		10.1	240.4
S.L. Thorn			
Ch		2.5	228.0
14		6.8	
W.Ch.		11.1	
T.P.	0.41	218.08	12.84 217.67
25'50 Thorn			
W ¹⁴		1.4	
Ch		5.8	
W.L.		10.1	208.0
S.L. Thorn			
W.L.		5.3	212.8

Cross Section of Intersection
at Front & Spruce

069 24287 242.18

N/Lino Spruce

E	4.9	238.0
Ch	5.6	237.3
W	6.3	236.6
C	6.8	236.1
W	8.0	234.9
Ch	9.6	233.3
W	10.6	232.3
No Ch		
W	11.2	231.7
Ch	10.2	232.7
W	9.2	233.7
C	7.9	235.0
W	7.3	235.6
Ch	6.7	236.2
E	5.7	237.2

51

No 4

E	6.1	236.8
Ch	7.1	235.8
W	8.1	234.8
C	8.9	234.0
W	10.2	232.7
Ch	11.2	231.7
W	12.0	230.9
Ch Spruce		
W	12.7	230.2
Ch	12.0	230.9
W	10.9	232.0
C	9.6	233.3
W	8.5	234.4
Ch	7.3	235.6
E	6.4	236.5

242.87

50 4

E	6.0	236.9
CL	7.2	235.7
1/4	8.4	234.5
C	9.2	233.7
1/4	11.2	231.7
CL	12.3	230.6
W.	13.1	229.8
	50 CL	
W	13.2	229.7
CL	12.1	230.8
1/4	10.8	232.1
C	9.5	233.4
1/4	7.8	235.1
CL	6.6	236.3
E	5.5	237.4

50 Line Spruce

E	5.4	237.5	
CL	7.0	235.9	
1/4	8.1	234.8	
C	9.0	233.9	
1/4	10.5	232.4	
CL	12.0	230.9	
W	13.3	229.6	
1/2 BMW Spruce Front	5.67	237.20	237.24
T.P.	074 231.52	12.09	230.78
1/2 BMW 150 W of Front	8.83	222.69	222.69

12/7/66

(Habit.
 Murch
 Butler)

Degree of Curve 22° 8'
 Radius 209.27
 Long Church 102.0

Reverse Curve
 of Crline from
 Cr of St 400 Spt

POSTED

371	342.15		33844
2048 N of Olive			
W Side	4.0		338.2
174.4	4.1		338.1
142.7	4.6		337.6
113.0	5.6		336.6
93.5	7.1		335.1
65.0	11.6		330.6
T.P. 0.86	330.66	12.95	329.20
43.2	4.0		326.1
21.7	8.1		322.0
Nh Olive	11.7		318.4
T.P. 1.25	321.92	12.39	317.67
Cr. of Nh Olive	9.9		312.0
NE Cor Olive	13.2		308.7
High Georgia			
Cr Olive on East	14.6		307.3
SE Cr. Olive	17.3		304.6
33.3 N of Olive (E)	10.3		311.6

Univ to NE Cr Olive

Change of
 Georgia bet.
 321.92 Univ to Olive

53

33.3 (Cr)		6.2	315.7
61.9 (Cr)		1.8	320.1
61.9 (E)		6.6	315.3
88.9 (E)		1.5	320.4
T.P. 1800	334.52	6.40	321.52
88.9 (Cr)		10.3	324.2
111.1 (Cr)		3.9	329.1
111.1 (E)		10.4	324.1
146.8 (E)		3.6	328.9
146.8 (Cr)		1.8	332.7
166.8 (Cr)		0.8	333.7
166.8 (E)		3.9	330.6
185.2 (E)		1.9	332.6
T.P. 329	337.46	0.35	334.17
185.2 (Cr)		2.6	334.9
304.8 (Cr)		1.8	335.7
" (E) = 200 N of 28			334.7
olive or 400 S of Univ -			

Robinson. Georgia
 To Florida 12/1/06
 33746

029	325.13	12.57	324.89
016	312.39	12.95	312.18
N	ci.	50.	
90 E of Georgia	40	70	
105		90	
127			
140			
160			
173			
T.P.	0.90	301.03	12.21
		300.13	
200	140	140	
250	160		
0.03	288.43	12.63	288.40
300	1	160	
		200	
		250	
		300	
380	380	380	

54

		4.7	3076	7.2	305.1
5.1	307.2	15.6	296.7	8.8	303.5
5.0	307.3			13.5	298.8
11.2	301.1				
12.9	299.4				
13.5	298.5				
16.3	296.0				
9.6	291.4	11.5	289.5	14.5	286.5
16.2	284.8	14.1	286.9		
8.9	279.5			6.6	281.8
				10.3	278.1
				13.5	274.9
				17.2	271.2
12.6	270.8	14.6	270.8	16.9	271.5

POSTED

55

288.43

10.19 298.59 0.03 288.40

12.67 311.10 0.16 298.43

8.78 319.45 0.43 310.67

Park Boulevard Centre

X Dick Robinson 12.4 307.05

X Dick Robinson 14.25 305.20

55

56

56

57

58

59

Levels over Ctr Steiner St - West
from Alley bet Fairmount & Pauly.

POSTED

394 513.25

509.31

BM E. side Alley N.L. Steiner.

0+00- Ctr Alley bet ^{Ermit} Pauly 4.4

1 4.5

+35⁵ EL Pauly 4.6

241⁵ W.L. " - 0+00 4.8

1 5.1

2 5.5

3- EL Van Dyke 5.4

+80 W.L. " - 0+00 5.9

1 6.4

2 6.7

3- EL Copeland Ave 6.7

+80 W.L. " " 7.3

Levels over Ctr. Line Steamer St
From Ctr Alley bet Pauly & Paramount - East

POSTED

61

	513.25	
0 = Ctr Alley bet ^{East} Pauly.	4.4	
1	4.5	
+35 = W.L. Pauly.	4.7	
+95 = EL " = 0+00	5.0	
1	6.1	
2	6.2	
+70 = W.L. Colonial	7.2	
+3+31 = EL " = 0+00	7.3	
1	8.3	
2	9.6	
+70 = W.L. Highland	11.4	

Levels over Caroline El Cajon from
Carline Alley bet Paul's Fairmount to
a point in front of Huck's Residence.

62

000 508.00

ADJUSTED

3500.

- B.M. N.W. Fairmount & El Cajon

0+00 - Car Alley	7.55
1	8.34
2	7.22
3	6.16
4	4.75
5	3.32
6	2.09
+ 21 Δ 2937'	1.87
7	1.55
8	1.08
9	0.65
10	0.32
11	0.25

Cross-Section of 17th St - "E" to "F"

57 } Saw
31 } most
57 } then
POSTED

176	60.40		
14.49	72.07	0.81	59.59
12.48	84.32	0.23	71.04
12.62	96.17	0.77	83.55
4.41	100.24	0.34	95.83
		2.00	98.74 - B.M. N.V. 1912

S.L. E

11	3.1
CL	3.9
1/4	3.2
C	2.1
1/4	2.0
dt	1.8
E	1.9

20' 5" "E"

E	1.9
CL	2.0
1/4	2.4
C	2.8
1/4	4.0
CL	4.6
11	4.1

5-0' 5" "E"

W	5.1
SE W.L.	1.5
CL	6.0
1/4	5.0
C	4.4
1/4	3.8
CL	2.7
E	2.0

63

100 S. E.
17th St.
75 S. E.

E	3.9
Cl	4.7
W	5.1
C	5.7
W	6.0
Cl	6.6
W E of W, L.	6.7
W.	5.5

100 S. E.

W	6.0
W E of W, L.	7.3
Cl	7.2
W	6.5
C	6.2
W	6.4
Cl	6.7
E	5.0

125 S. E.

E	5.9
W	6.9
W	6.8
C	6.8
W	7.1
Cl	7.6
W E of W, L.	7.6
W	6.8

150 S. E.

W	7.6
W E	8.1
Cl	7.9
W	7.6
C	6.0
W E of W, L.	7.0
W	7.3
Cl	7.2
E	6.3

100.00

175th St

175 S. E

E	7.1
Cl	7.5
W	7.8
C	7.5
W	7.8
Cl	8.5
3' C. M. L.	8.7
W	7.7

201 S. E

W	8.4
Cl	8.1
W	7.8
C	8.0
W	8.0
Cl	8.0
W	7.5

65

225 S. E

E	8.6
W	9.3
W	8.8
C	8.4
W	8.4
Cl	8.5
W	8.9

350 S. E

W	9.4
Cl	9.0
W	8.7
C	8.7
W	9.1
Cl	9.5
E	8.9

101.2d
17th St.
265' S. "E"

E		10.0	
Cl		9.3	
11' W of cl.		8.8	
W		10.0	
C		9.5	
W		8.9	
Cl		9.3	
W		9.2	
T.P.	1.55	93.16	90.61
		271' S. "E"	
W		1.6	
Cl		1.2	
3' E of cl.		0.9	
W			
W			
6' W of cl.		1.3	
Cl		1.6	
E		2.2	

68
66
270' S. "E" POSTED

E		3.0	
7' W of E.L.		2.5	
4' E of cl.		10.7	
Cl		8.6	
W.L.		1.9	
TP	0.63	80.81	11.98 80.18
TP	2.75	72.32	11.24 69.57
		271' S. "E"	
10' W of ctr.		0.5	
ctr		0.0	
E of		10.5	72.8
		271' S. "E"	
W.L.		-	80.1
9' E		5.2	
Cl		6.0	
4'		6.0	
C		5.7	
4'		3.2	
Cl		4.6	
E		3.4	

72.32

170 54

292 S₀° E POSTED

E	4.4
Ch	4.8
v	5.3
c	5.8
w	6.1
u	6.6
W	4.8

300 S₀° N. L. F

W	6.0
Ch	6.3
td	5.9
C	5.9
4	5.5
Ch	5.3
E	4.9

X. Section Maryland

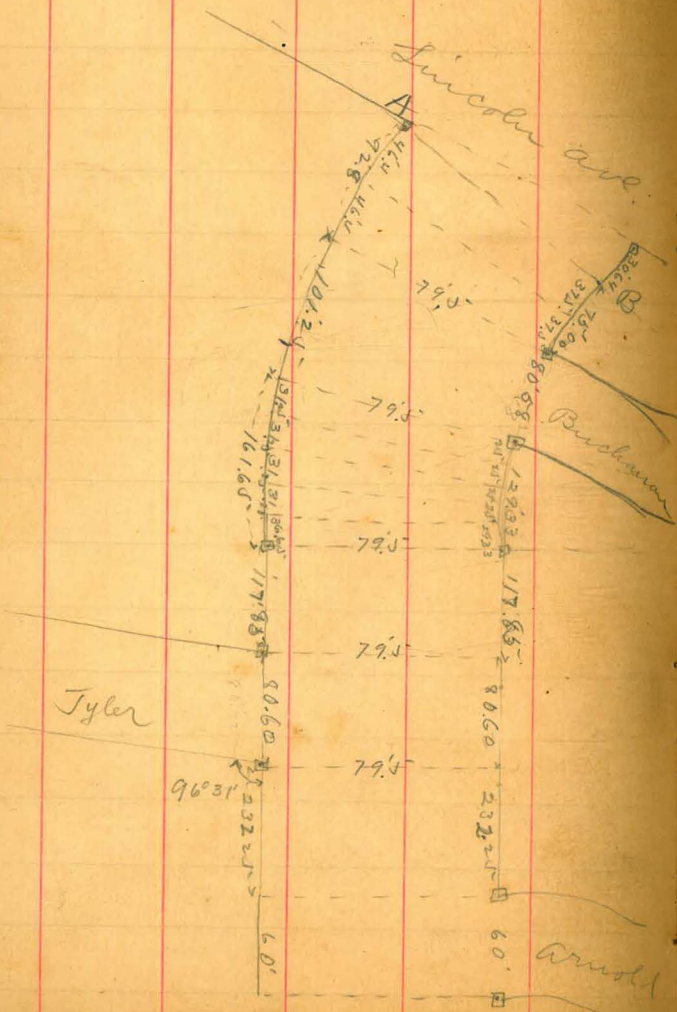
5
71

Lincoln to Meade

Oct. 25, 1907

Calhoun
County
Ba. 68

POSTED



HI
167 301.75 30208

N. line Lincoln

E line	2.7	299.1
	2.2	299.9
	2.9	298.9
C	3.0	298.8
	2.5	299.3
	3.0	298.8
W line	3.6	298.2

Sect. on A.B. Fig 1

W line	4.2	297.6
	3.8	298.0
	3.2	298.6
C	3.1	298.7
	3.1	298.7
	2.2	299.6
E line	2.7	299.1

37.5 North AB

69

E line	2.5	299.3
	3.6	298.2
	4.6	297.2
C	5.1	296.7
	5.5	296.3
	6.1	294.7
W line	6.1	294.7

75' N.A.B (40. line Buchanan)

W line	7.3	294.5
	6.3	295.5
	5.0	296.8
C	4.4	297.4
	3.2	298.6
	2.4	299.4
E line	2.5	299.3

301.75

So. lb

Elms	2.4	299.4
	2.9	298.9
	3.5	298.3
e	4.1	297.7
	5.3	296.5
	6.6	295.3
White	6.8	295.0
	8.6	293.2
White	7.7	294.1
	6.0	295.8
e	4.6	297.2
	3.9	297.9
	2.9	298.9
Elms	2.2	299.6

No. 1/4

301.75

70

Center

Elms	2.4	299.4
	3.1	298.7
	4.4	297.4
e	5.4	296.4
	6.5	295.3
	8.0	293.8
White	8.4	293.4
	9.6	292.2
	8.3	293.8
	7.6	294.5
e	5.2	296.6
	5.0	296.8
	4.0	297.8
Elms	2.8	299.0

POSTED

No. 1/4

05

301.75

N.C.B.

E line	4.9	296.9
	5.7	296.1
	5.8	296.0
@	7.4	294.7
	9.4	292.7
	10.2	291.6
W line	12.4	289.7
	N line Buchanan	
W 1/4	12.4	289.7
c	9.3	292.5
	7.7	294.1
	6.8	295.0
E line	5.1	296.7

301.75

71

25' North

E line	6.5	295.3
	9.5	292.3
E line	13.4	288.4
T.P.	0.05	^{HI.} 288.94
	12.86	288.89
	N line Buchanan	
W.C.B.	POSTED	4.2 284.7
W line		7.6 281.3
	25' N	
W line		16.6 272.3
		12.8 276.1
		9.0 279.9
c		5.8 283.1
	50' N	
E line		1.5 287.3
		5.7 283.2
		9.9 279.0
c		13.4 275.5

15

J.P.

0.12

N.I.

276.83

12.23

276.71

50' 71

w 1/4

5.6

271.2

9.9

266.9

w line

13.8

263.0

75' 71

w line

19.4

257.4

16.3

260.5

13.0

263.8

c

10.1

266.7

7.2

269.6

4.9

271.9

E line

3.0

273.8

276.83

100' 71

72

E line

15.5

261.3

16.2

260.6

16.2

260.6

c

16.2

260.6

15.0

261.8

13.0

263.8

w line

11.0

265.8

N.I.

J.P.

12.45

288.90

0.38

276.45

129.33 71 (118.33 to Tyler)

w line

10.3

278.6

11.1

277.8

11.0

277.9

11.1

277.8

11.6

277.3

11.4

277.5

E line

11.7

277.2

288.90

" 100' So. Tyler

E line		4.1	284.8
		3.7	285.2
		4.7	284.2
C		4.8	284.5
		4.6	284.3
		4.1	284.8
W line		1.5	287.4
J.P.	13.06	^{H.I.} 301.84	0.12 288.78
		75' So.	
W line		7.3	294.5
		7.4	294.4
		7.6	294.2
e		8.0	293.8
		7.7	294.1
		6.4	295.4
E line		6.2	295.6

301.84

50' So.

73

E line		3.9	297.7
		4.0	297.8
		4.2	297.6
e		4.2	297.6
	POSTED	4.0	297.8
		4.0	297.8
W line		4.1	297.7
	25' So.		
W line		2.7	299.1
		2.5	299.3
		2.6	299.2
e		2.9	298.9
		2.9	298.9
		3.0	298.8
E line		2.2	299.6

30184

So. line Tyler

Eline

1.40 300.44

as line
B.M. 82
cor. Tyler

2.2 299.6

2.0 299.8

c

1.5 300.3

1.4 300.4

1.8 300.0

White

1.9 299.9

So. cb

White

1.6 300.2

1.2 300.6

0.5 301.3

c

0.5 301.3

1.0 300.8

1.7 300.1

Eline

1.2 300.6

74

So 1/4

Eline

1.4 300.4

1.3 300.5

0.6 301.2

c

POSTED

0.2 301.6

0.2 301.6

0.9 300.9

White

1.2 300.6

Center

White

0.7 301.1

"

0.3 301.5

0.2 301.6

c

0.2 301.6

0.6 301.2

0.7 301.1

Eline

0.6 301.2

J.P.

6.69

H.L.
307.03

300.44

307.03

7/4

Eline

5.0 302.0

5.5 301.5

5.4 301.6

C

5.2 301.8

5.0 302.0

5.2 301.8

White

5.5 301.5

7.6

White

5.3 301.7

4.9 302.1

4.7 302.3

C

4.9 302.1

5.2 301.8

5.4 301.6

Eline

5.2 301.8

75

N. line Tyler

Eline

5.3 301.7

5.2 301.8

4.9 302.1

C

4.8 302.2

POSTED

4.7 302.8

4.8 302.2

White

4.9 302.1

25/7

White

5.0 302.0

4.9 302.1

4.4 302.6

C

4.7 302.3

4.9 302.1

5.1 301.9

Eline

5.2 301.8

50' N

Elise 5.3 301.7

5.2 301.8

4.9 301.1

c 4.8 301.2

5.0 302.0

4.9 302.1

u whio 4.9 302.1

75' N

u whio 5.1 301.9

5.2 301.8

5.4 301.6

c 5.6 301.4

5.5 301.5

5.2 301.8

Elise 5.5 301.5

100' N

Elise 5.4 301.6

5.8 301.2

6.1 300.9

c 5.6 301.4

5.4 301.6

5.5 301.5

whio 5.5 301.5

125' N

whio 5.5 301.5

6.4 300.6

6.5 300.5

c 6.2 300.8

6.3 300.7

6.5 300.5

Elise 6.4 300.6

150' N

E	blue	6.8	300.2
		6.0	301.0
		5.8	301.2
C		7.2	299.8
		7.1	299.9
		6.8	300.2
u	white	6.5	300.5

175' N

u	white	6.9	300.1
		7.1	299.9
		7.7	299.3
C		7.7	299.3
		7.8	299.2
		7.6	299.4
E	blue	7.0	300.0

200' N

blue	6.9	300.1
	7.2	299.8
	7.4	299.6
C	8.7	298.3
	9.3	297.7
	9.1	297.9
white	8.7	298.3

232.25 (to line arched)

white	10.3	296.7
POSTED	10.2	296.8
	9.2	297.8
C	8.8	298.2
	8.6	298.4
	7.3	299.5
blue	5.9	301.1

Arnold 60' wide

Oct 3, 1907

Childs
Evans
Barber
B.M. 78
Cor. Van Rensselaer

304.20

78

		H.I.		
T.P.	153	310.36		308.83
		H.F.		
T.P.	220	304.20	8.36	302.00

No. 06 Arnold

E line 3.1 301.1

4.5 299.7

5.6 298.6

C 6.0 298.2

6.4 297.8

7.4 296.8

white 8.3 295.9

No. 14

white 8.9 295.3

8.3 295.9

7.2 297.0

C 6.3 297.9

6.5 298.7

4.4 299.8

E line 3.1 301.1

Center

E line 3.3 300.9

4.4 299.8

5.5 298.7

C 6.6 297.6

7.9 296.3

9.0 295.2

white 9.4 294.8

No. 14

white 10.6 293.6

9.1 295.1

7.7 296.5

C 6.1 298.1

5.1 299.1

3.8 300.4

E line 2.9 301.3

	N. eb		
Elms	2.9	301.3	
	4.0	300.2	
	4.9	299.3	
c	6.3	298.9	
	7.4	296.8	
	8.7	295.5	
White	11.2	293.0	
	White Arnold		
White	10.8	293.5	
	8.8	295.4	
	7.3	298.9	
c	6.1	298.1	
	4.9	299.3	
	3.9	300.3	
Elms	2.9	301.3	

300' N. Tyler = (7.75' North Arnold)

Elms	2.4	301.8
	3.7	300.5
	4.7	299.5
c	6.0	298.2
	7.0	297.2
	8.6	295.6
White	10.6	293.6
	325' N	
White	9.9	294.3
	8.4	295.8
	6.8	297.4
c	5.4	298.9
	4.1	300.1
	2.9	301.3
Elms	1.7	302.5

25

350' N Tyler

E line

1.2 303.0

2.0 302.2

3.2 301.0

c

4.5 299.7

6.0 298.2

7.5 296.1

W line

9.3 294.9

375' N

W line

8.3 295.9

6.8 297.4

4.9 299.3

c

3.9 300.3

2.9 301.3

4.3 299.9

E line

6.1 298.1

304.20

30

400' N

E line

14.4 289.8

11.6 292.6

9.2 295.0

c

6.6 297.6

5.7 298.5

6.8 297.4

W line

8.2 296.0

425' N

W line

9.9 294.3

9.9 294.3

11.1 293.1

c

13.3 290.9

12.96.

	304.20		
	475' N Tyler		
2 1/2	E line	11.0	293.2
	500' N		
	E line	3.3	300.9
		8.1	296.1
	E 1/4	12.6	291.6
	525' N		
10 1/2	E 1/4	9.8	293.4
		4.8	299.4
1 1/2	E line	1.0	303.2
	550' N		
	E line	5.0	299.2
		8.8	295.4
	E 1/4	12.6	291.6
	575' N		
2 1/2	E 1/4	14.9	289.3
		11.5	292.7
	E line	6.2	298.0
	see Book 281		

27,166
 4
 108,664
 54.3
 108.66
 181.34
 x 452.964

14.87

27,166
 23
 81,498
 54332
 624,818
 14.87
 x 639.688

54.33 27,166
 8.949 4
 167.86 108.664
 22.05 252.28
 333.73 360.944
 333.73
 x 694.67

25
337.3

B
170.74

273

523.5

365

40

8.25

175

235.68

567

23001.4

Return to City Engineers Office
City Hall, San Diego, Cal.

220

40

240

310

622.5

222.69

7.19

15.1

11.1

247.65

719

254.84

137.2

Return to City Engineers Office
City Hall, San Diego, Cal.
TRAVERSE TABLE FOR TRANSIT BOOK.
From 1° to 90° for a distance of 100.

Degrees.	DEGREES.		¼ DEGREE.		½ DEGREE.		¾ DEGREE.		Degrees.
	Lat.	Dep.	Lat.	Dep.	Lat.	Dep.	Lat.	Dep.	
0			100.00	0.44	100.00	0.87	99.99	1.31	89
1	99.98	1.75	99.98	2.18	99.97	2.62	99.95	3.05	88
2	99.94	3.49	99.92	3.93	99.91	4.36	99.88	4.80	87
3	99.86	5.23	99.84	5.87	99.81	6.10	99.79	6.54	86
4	99.76	6.98	99.73	7.41	99.69	7.85	99.66	8.28	85
5	99.62	8.73	99.58	9.15	99.54	9.58	99.50	10.02	84
6	99.45	10.45	99.41	10.89	99.36	11.32	99.31	11.75	83
7	99.25	12.19	99.30	12.62	99.14	13.05	99.09	13.49	82
8	99.03	13.92	98.97	14.35	98.90	14.78	98.84	15.21	81
9	98.77	15.64	98.70	16.07	98.63	16.50	98.56	16.93	80
10	98.48	17.36	98.40	17.79	98.33	18.22	98.25	18.65	79
11	98.16	19.08	98.08	19.51	97.99	19.94	97.90	20.38	78
12	97.81	20.79	97.72	21.22	97.63	21.64	97.53	22.07	77
13	97.44	22.50	97.34	22.92	97.24	23.34	97.13	23.77	76
14	97.03	24.19	96.92	24.62	96.81	25.04	96.70	25.46	75
15	96.59	25.88	96.48	26.20	96.36	26.72	96.25	27.14	74
16	96.13	27.56	96.00	27.98	95.88	28.40	95.76	28.82	73
17	95.63	29.24	95.50	29.65	95.37	30.07	95.24	30.49	72
18	95.11	30.90	94.97	31.32	94.83	31.73	94.69	32.14	71
19	94.55	32.56	94.41	32.97	94.26	33.38	94.12	33.79	70
20	93.97	34.20	93.82	34.61	93.67	35.02	93.51	35.43	69
21	93.36	35.84	93.20	36.24	93.04	36.65	92.88	37.06	68
22	92.72	37.46	92.55	37.86	92.39	38.27	92.22	38.67	67
23	92.05	39.07	91.88	39.47	91.71	39.87	91.53	40.27	66
24	91.35	40.67	91.18	41.07	91.00	41.47	90.81	41.87	65
25	90.63	42.26	90.45	42.66	90.26	43.05	90.07	43.44	64
26	89.88	43.84	89.69	44.23	89.49	44.62	89.29	45.01	63
27	89.10	45.40	88.90	45.79	88.70	46.17	88.50	46.56	62
28	88.29	46.95	88.09	47.33	87.88	47.72	87.67	48.10	61
29	87.46	48.48	87.25	48.86	87.04	49.24	86.82	49.62	60
30	86.60	50.00	86.38	50.38	86.16	50.75	85.94	51.13	59
31	85.72	51.50	85.49	51.88	85.26	52.25	85.04	52.62	58
32	84.80	52.99	84.57	53.36	84.34	53.73	84.10	54.10	57
33	83.87	54.46	83.63	54.83	83.39	55.19	83.15	55.56	56
34	82.90	55.92	82.66	56.28	82.41	56.64	82.16	57.00	55
35	81.92	57.36	81.66	57.71	81.41	58.07	81.16	58.42	54
36	80.90	58.78	80.64	59.13	80.39	59.48	80.13	59.83	53
37	79.86	60.18	79.60	60.53	79.34	60.88	79.07	61.22	52
38	78.80	61.57	78.53	61.91	78.26	62.25	77.99	62.59	51
39	77.71	62.93	77.44	63.27	77.16	63.61	76.88	63.94	50
40	76.60	64.28	76.32	64.61	76.04	64.94	75.76	65.28	49
41	75.47	65.61	75.18	65.93	74.90	66.26	74.61	66.59	48
42	74.31	66.91	74.02	67.24	73.73	67.56	73.43	67.88	47
43	73.14	68.20	72.84	68.52	72.54	68.84	72.24	69.15	46
44	71.93	69.47	71.63	69.78	71.33	70.09	71.02	70.40	45
45	70.71	70.71							

Published by H. S. CROCKER COMPANY, Stationers, Drawing Materials,
Mathematical Instruments, etc., San Francisco.