

✓

2

LEVEL

F.B. 27

27

MICROFILMED

DEC 4 1964

*Return to City Engineers Office
City Hall, San Diego, Cal.*

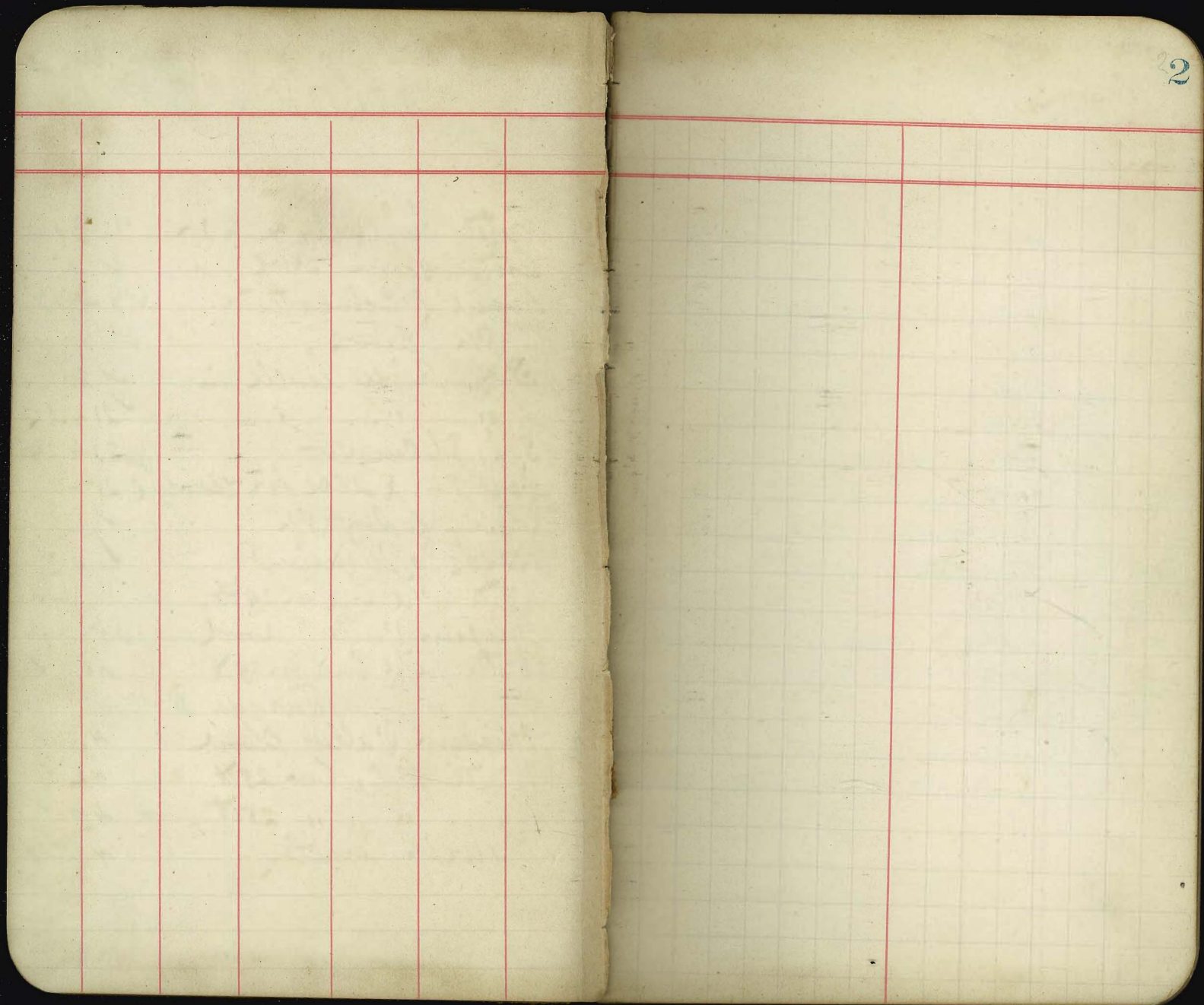
27

*Return to City Engineers Office
City Hall, San Diego, Cal.*

INDEX

12

Water pipes 24 & 13 st	✓ 3-4
Intercom Ave	✓ 5-
Board of Education	✓ 8-17
C St Elevs	✓ 18
S. B. River levels in	✓ 20
" " " "	✓ 21-22
S. B. St. Car Co	✓ 23-24
Loy St X sees for Bridge	✓ 25-30
X sees of Loy St	✓ 31
X sees of W. Main St	✓ 32
Water pipe line on 24th	34 ✓
Mission Valley Road	35-39 ✓
Water pipe line on 24th	40 ✓
" " " Twigg St	41
Mission Valley Road	43 ✓
Water pipe on 25th	42 ✓
" " " 25th	44 ✓
✓ Jewish Cemetery	45 ✓



Grades for water pipe on
K St to 24th and on 24th St
560' south

Sta	Elev	Grade cut	Dist	Notes
2	96.50			
0	96.50			x
1	91.75			
2	87.00			
3	82.25			
4	77.50			x
+40	76.75			x
+70	76.25			x
5+70	71.22			
6+70	66.21			
7+70	61.20			x
8+50	59.20			x
9+50	57.53			
10	56.70			x

West line of 22nd St

99.5'

East line of 22nd St

East line of 24th St

10' East of center of 24th St

South line of K Street

North line of K St

South line of K St

opposite alley pipe runs west from
this point 440' to the East line of
22nd St

Levels on water pipe line on
24th St

4

Sta	+	H.O.	-	Blv.	
B.M.	0.37	81.32		80.95	
4+06			1.68	79.64	77.50 + 2.14
+H6			4.01	77.31	76.75 + 0.56
+72			4.67	76.65	76.25 + 0.40
6+72			7.73	73.59	71.22 + 2.37
#	1.94	71.64	11.62	69.70	
1+72			2.61	69.03	66.21 + 2.82
7+72			6.93	64.71	61.20 + 3.51
B.M.			3.72	67.92	67.86 + 0.06
8+52			10.52	61.12	59.20 + 1.92
9+52			8.82	62.82	57.53 + 5.29
10+03 #	4.69	66.63	9.70	61.94	56.70 + 5.24
B.M.			6.00	60.63	
10+46			5.32	61.31	
11+43			5.09	61.54	
12+43			3.73	62.90	
13+43			3.63	63.00	
14+61			4.22	62.41	

cor of K and 24th St
West line of 24th St
90° to right, down 24th St
South line of K St.

North line of L St
24th and L St
South line of L St

Turn 90° R. to alley
m and 24th St
West line of 24th St.

East line of 22nd St.

Levels over a portion of
Interocean. ave

5

Sta	+	HO	-	Elev
B.M.	6.38	58.92		52.54
2			8.7	50.2
#	0.11	49.43	9.60	49.32
2+50			2.3	47.1
3			8.4	41.0
+50			11.7	37.7
4			13.9	35.5
+50			8.8	40.6
+76			4.9	44.5
5			2.2	47.2
#	7.32	55.00	1.75	47.68
+50			6.2	49.8
+93			4.9	50.1
6			8.0	47.0
+24			5.3	49.7
+50			5.7	49.3
+71			5.8	49.2
B.M.			7.28	47.72
				47.62

Julian and 22nd St
center of Interocean ave 200' west of
24th Street

bottom of gulch.

Intersection of center line of Interocean
ave with pueblo line

Top of bank RR cut.
Elev of graded road bed
top of RR bank

South line of N. St. 41.5 feet East of 22nd
hole on of school house line out

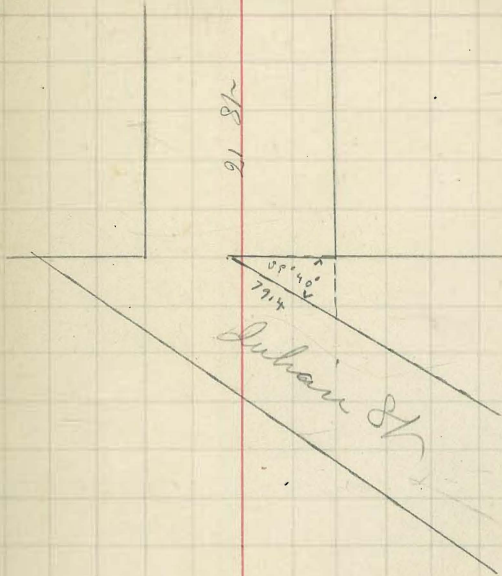
North from center line of Interoceanic and Pueblo line

6

Sta	+	HO	-	Elev
		55.0		see preceding page
5			7.6	47.4
+50			5.4	49.6
+97			4.2	50.8
6+01.8			7.4	47.6

top RR bank

South line of RR



X sect of 8th ward school grounds

Sta	+	H ₀	-	Elev.
B _{9m}	7.55	73.02		65.47
Ball line is 120' East of cor of ^{Recess} field and				
univ			7.0	66.0
E+0			7.6	65.4
D+0			7.3	65.7
C+0			6.7	66.3
B+0			6.0	67.0
q+0			6.3	66.7
V+0			6.4	66.6
O'+0			6.1	66.9
d'+0			6.7	66.3
E'+0			6.6	66.4
F'+0			7.8	65.2
g'+0			7.8	65.2
			7.6	65.4
			7.1	65.9
H'+25			6.8	66.2
G'+25			5.7	67.3
F'+25			6.0	67.0
E'+25			6.3	66.7
D'+25			5.9	67.1

univ and 27th St

25 west of line F⁰

12' East of G'+0 cor of lot
8.3' East of H'+25

Sta	+	170	-	Blw
		73.02		
c'+25			5.8	67.2
b'+25			5.7	67.3
a'+25			5.7	67.3
h+25			6.4	66.6
c+25			6.5	66.5
d+25			6.9	66.1
v+25			6.6	66.4
f+25			6.6	66.4
g+25			6.9	66.1
lot cor.			6.8	66.2
			6.4	66.6
g+50			6.5	66.5
f+50			6.4	66.6
e+50			6.4	66.6
d+50			6.3	66.7
c+50			5.9	67.1
b+50			5.6	67.4
q+50			5.2	67.8
h'+50			4.9	68.1
d'+50			5.0	68.0
			4.9	68.1

line of lot

19.0 from Sta g+25 N.E. to lot cor
4' West of Sta g+50

7' East of c'+50 steps

Sta	r	HO	-	Blv.
		73.02	4.5	68.5
			4.2	68.8
			4.5	68.5
			4.3	68.7
			4.4	68.6
			4.1	68.9
g+75			4.8	68.2
b+75			5.1	67.9
c+75			5.5	67.5
d+75			5.8	67.2
			5.4	67.2
			5.9	67.1
E+75			5.7	67.3
F+75				
F+75			6.0	67.0
			6.0	67.0
			5.2	67.8

14' north and 7' east of Sta c'+50 cor
of recess

14' north of Sta c'+50

7' east and 6' south of Sta c'+50 on
top of lower step

14' north of Sta b'+50 wall

14' N end of Sta b'+50 S.W. cor
of building

23.6' East of Sta a+75

9' west of Sta d+75, 7' SWish to front of
Smith School elev at cor-

4' north of E+75 to front of Smith school

8.5 west Sta F+75 lat line

17.6 west of Sta c.100 to back of Smith School

31.5 S.W. to East cor-

Sta	T	H ₂		Elev
		73.02		
C1+40			4.9	68.1
b 1			4.2	68.8
a			4.0	69.0
			3.5	69.5
			3.7	69.3
a 1+25			2.8	70.2
g 1+25			2.8	70.2
b 1+25			4.1	68.9
d 1+25			4.6	68.4
g #	5.61	76.40	2.23	70.79
C 1+25			7.6	68.8
From Sta 26.6' west of c 1+50			7.8' S west to cor of	
			7.0	69.4
			8.1	68.3
			5.4	67.6
C 1+50			7.2	69.2
b 1+50			6.4	69.6
a 1+50			5.6	70.8
			5.3	71.1
			4.6	71.9

4.7 west of Sta 91 to cor of wing
 23.6 " " " " to cor of recess
 4.7 " " Sta 91+25 to wall

From Sta c 1+25 18' ^{Front} SE to end of closet
 width 8.3

water closet width 8.3 Trans
 Sta 20.6 west of c 1+50
 intersection of 1 with NW sep line lot
 15' West of Sta E 1

4.7 East and 12' South of a 1+50 to N.W. cor - school
 top of foundation

Sta	+	H ₂ O	-	blw
		76.40		
b'1+50			5.1	71.3
			4.5	71.9
			4.6	71.8
			4.6	71.8
c'1+50			4.8	71.6
			4.4	72.0
d'1+50			4.7	71.7
			4.4	72.0
			4.1	72.3
e'1+50			4.9	71.5
			5.0	71.4
			5.1	71.3
f'1+50			5.5	70.9
			4.7	71.7
g'1+50			6.0	70.4
			6.9	69.5
			4.4	71.6
h'1+75			4.8	71.6
i'1+75			4.6	71.8
j'1+75			4.7	71.7

5 East and 2' South of b'1+50 to ^{top} end of a step
 5 " " 12' South of b'1+50 wall
 12' South b'1+50

door sill 2' South Sta c'1+50

door sill 2' S and 2' East of d'1+50
 4' West and 2' South of E'1+50 cor of step
 edge of top

4' West and 12' S of E'1+50
 12' South of E'1+50

3' West and 12' South Sta F'1+50 NE corner blk

19' East of g'1+50 ditto line
 14.5 East of E'1+75

Sta	+	H ₀	-	Elev
		76.40		
c'1+75			4.5	71.9
b'1+75			4.2	72.2
a'1+75			5.5	70.9
b'1+75			6.3	70.1
c'1+75			6.5	69.9
			5.4	71.0
k'2			6.4	71.0
a'2			6.0	71.4
b'2			4.3	72.1
c'2			4.4	72.0
d'2			4.1	72.3
e'2			3.8	72.6
			3.9	72.5
			3.5	72.9
d'2+25			3.6	72.8
c'2+25			3.7	72.7
b'2+25			4.1	72.3
a'2+25			4.3	72.1
			3.9	72.5
			3.8	72.6
b'2+50			3.7	72.7

lot line
4' west of Sta b'2

9' east of e'2 lot line
4.5' east of Sta d'2+25

8'4" west of Sta a'2+25 lot line
12.6' west of Sta b'2+50

Sta	+	AD	-	elev
		76.40		
C'2+50			3.4	73.0
			3.3	73.1
B.9m.			1.45	74.95
#	2.49	72.39	6.50	69.90
			2.0	70.4
F'1+25			2.0	70.4
G'1+25			2.5	69.9
H'1+25			3.5	69.9
I'1+25			4.1	69.3
			4.1	68.3
J'1+0			4.3	68.1
I+0			4.0	68.4
H'1+0			3.2	69.2
G'1+0			2.8	69.6
F'1+0			2.3	70.1
			2.3	70.1
			3.3	69.1
			3.0	69.4
			3.3	69.1
F'+75			3.9	68.5

33.7 from Sta 12.6 West of B'2+50 to cor of lot
Julien and 27th St

3' west of Sta F'1+25 wall

left line
5' east of J'1+0

3' west of Sta F'1+00 to cor of L on East
10.5 " " " to center door sill
18.0 " " " to recess on East end
18.0 " " " F'+75 wall

Sta	+	-	Elev
		72.39	
G'+75		3.7	68.7
H'+75		3.4	69.0
I'+75		5.5	66.9
		4.9	67.5
		4.5	67.9
		6.1	66.3
J'+50		6.1	66.3
K'+50		4.0	68.4
L'+50		4.3	68.1
M'+50		4.8	67.6
		3.8	68.6
N'+50		4.5	67.9
		3.6	68.8
O'+50		4.2	68.2
		3.2	69.2
		3.4	69.0
		3.9	68.5
P'+50		6.95	65.44

28 East 1+75 lat line
 18 ft. cm of lat
 4' East of Sta 1'+50

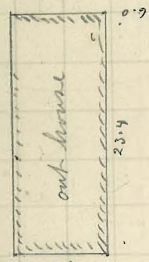
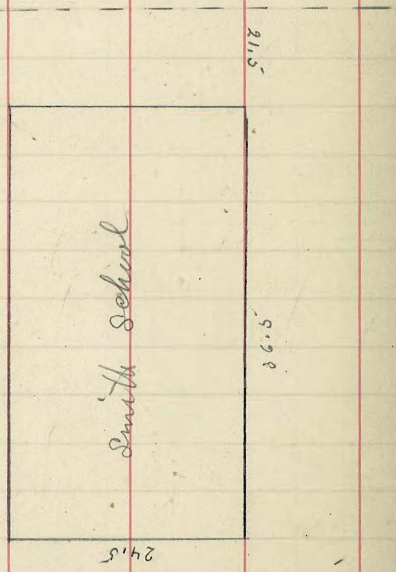
7' 8" and 17' N of Sta J'+50 SE corner

17' N of Sta J'+50 wall

17' north of Sta J'+50 down hill

17' N and 3' West Sta J'+50 entrance

4' West and 6' South to end slope elev of
 top of Sta J



8.5. 8.5. lot

53

Elevs along the North line
of C St. from East line of
23rd to 300' East of 24th

Oct 19 1891 Williams level
Bar Hook

17

sta	+	Hi	-	6
BM	11.62	173.392		161.772
0			8.6	164.8
25			5.9	168.5
50			3.6	169.8
75			0.9	172.5
#	11.23	183.792	0.83	172.562
1			9.2	174.6
1+25			6.8	178.0
1+50			4.4	179.4
1+75			1.7	182.1
#	12.00	195.052	0.74	183.052
0			10.8	184.2
25			8.5	186.5
50			7.3	187.7
75			5.9	189.1
1			4.6	190.4
1+25			3.4	191.6
1+50			2.4	192.4
1+75			1.7	193.3
2			1.0	194.0
+25			0.2	194.8

SW cor. 23 and C St

East line 23 St

West line 24 St

Center of 24 St

East line 24 St

Sta	H	H _i	-	E
		195052		
2456			0.2	194.8
#	77.5	200.772	20.3	193.022
+75			5.7	194.1
9			5.3	195.5
#	29.9	196.732	7.03	193.742
BM			8.36	188.372 188.389

South East cor 25 st

Level in river channel in old town
above bridge

19

Sta	+	HD	-	Elev
0	6.8	26.8		20.00
1			6.9	19.9 ✓
2			6.8	20.0 ✓
3			7.5	19.3 ✓
4			7.4	19.4 ✓
5			6.5	20.3 ✓
6			5.2	21.6 ✓
7			7.1	19.6 ✓
8			6.4	20.4 ✓
9			7.7	19.1 ✓
10			7.8	19.0 ✓
11			7.5	19.3 ✓
12			8.1	18.7

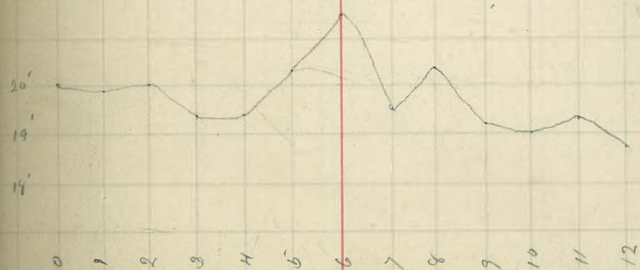
20
197
1.3

assumed elev in river bed above
diverting dam

point where they are seeping below

strike old bed river

approx point near water hole



Grade in the river bed above
bridge at old Town

20

Sta	+	HO	Stall	Red	
		26.8			
0			20.0	6.8 ✓	
1			19.9	6.9 ✓	
2			19.8	7.0 ✓	
3			19.7	7.1 ✓	
4			19.6	7.2 ✓	
5			19.5	7.3 ✓	
6			19.4	7.4	
7			19.3	7.5 ✓	
8	6.4	25.6	19.2	7.6 ✓	19.2
9			19.1	6.5	
10			19.0	6.6	
11			18.9		
12			18.8		
13			18.7		
14			18.6	7.00	

not set

set stake about 60' up river from
2nd pier, built around of rock

Levels in bed of San Diego river
below the C.S. R.R. track

Oct 19 1891

Humboldt
Hemlock 21

Sta	+	HO	-	Elev
B.M.	0.1	17.1		17.00
0			7.0	10.1
1 #	4.6	14.3	7.4	9.7
2			4.7	9.6
3			5.1	9.2
4			5.1	9.2
5			4.1	10.2
6			3.1	11.2
7			3.1	11.2
8			3.3	11.0
9			3.5	10.8
10			4.5	9.8
11			4.5	9.8
12 #	8.6	14.3	3.6	10.7
13			4.3	10.0
14			4.3	10.0
15			5.2	9.1
16			4.6	9.7
17			4.5	9.8
18			5.4	8.9
19			5.4	8.9

top of cut of bridge
Bottom of river under bridge
under P.B. R.R. track

check of grades for lot 2 and
 north 1/2 of lot R Blk 208 H A
 for J. H. Marshall

Sta	+	HD	-	Elev	Dist
B.M.	5.48	268.15		262.67	
		27.20	0.64	267.51	
			1.44	266.71	
B.M.	3.47	267.51	11.10	257.05	
S. corner		2.60		260.71	

Oct 21 1891

Hemlock level
 Van Hook's No. 22

spl. cor of fence S.W. of 4th and Nutmeg
 north East cor
 south East cor
 end and Nutmeg Sts

Oct 26th

Measurements for - St. Car Co

at 18th and 16th St
Intersected from intersection to
P.C. on 16th 70' to B.C. on
18th 79' feet $\angle 90^\circ$

at 16th and C
measured South to P.C. 91'
East to E.C. on C. St. 83
angle 90°

at 17th and C
intersected measured West to B.C.
81 feet
North to E.C. 76'
 $\angle 90^\circ$

at Hand 16th
 $\angle 90^\circ$ sin tang 100'

at 16th and Pueblo line
intersected measured N to B.C. 65'
SW to E.C. 64

23

at 20th and Milton
intersected measured NE to
P.C. 90.0 S.F.T.A. E.C. 88.0
at 26th and National
measured NW 90' to B.C.

East to E.C. 72'
at Hand 18th
intersected $\angle 90^\circ$ measured N to
E.C. 77' W to B.C. 78'

at Hand Arctic
intersected measured N to E.C.
West 80' to B.C.

at Hand all radius of about
60' connecting track on wharf with
track on 16th very irregular
on Arctic and 51'

intersected measured E 100'
South 93' to tang P.C.
on Hand 18th

intersected measured N 75' to E.C.
East 71' to B.C.

curve on 1st and Hale and
Frank and Belt and Frank
and Fair Road, 75'
on 5th and Fair Road 85' feet.

X sect for Bridges bet 3rd and
4th Sts on Luy

Oct-27 1891

Hambri
Williams
Van Hook
Shaw,

25

Stas	+	H2	-	Elev.
------	---	----	---	-------

B.M.	0.19	207.22		207.03
------	------	--------	--	--------

#	0.90	196.31	11.81	195.41
---	------	--------	-------	--------

#	0.00	184.65	11.66	184.65
---	------	--------	-------	--------

all the vents are lettered beginning with
a. 8.6' east of the center of 3rd St
The posts are numbered from 1
5' south of the north line of Luy
to no 8, 5' north of south line of
Luy Street, Posts 10' apart.

a. 1			9.7	175.0
------	--	--	-----	-------

a. 2			8.3	176.4
------	--	--	-----	-------

a. 3			8.8	175.9
------	--	--	-----	-------

a. 4			10.8	173.9
------	--	--	------	-------

#	0.16	172.79	12.02	172.63
---	------	--------	-------	--------

a. 5			1.4	174.4
------	--	--	-----	-------

a. 6			3.5	169.3
------	--	--	-----	-------

a. 7			4.0	168.3
------	--	--	-----	-------

a. 8			7.4	165.4
------	--	--	-----	-------

b. 7			11.8	161.0
------	--	--	------	-------

b. 6			10.2	162.6
------	--	--	------	-------

b. 5			7.6	165.2
------	--	--	-----	-------

3rd and Luy tack in step

Sta	+	HD	-	Elev
b.4		172.79	5.8	167.0
b.3			4.1	168.7
b.2			5.5	167.3
b.1			6.7	166.1
c.1			11.9	160.9
c.2			11.7	161.1
c.3			11.5	161.3
c.4			11.6	161.2
#	5734	166.27	11.86	160.93
c.5			6.2	160.1
c.6			7.4	158.9
c.7			8.7	157.6
c.8			9.7	156.6
b.8			6.8	159.5
d.8			11.8	154.5
d.7			11.5	154.8
d.6			10.6	155.7
d.5			10.3	156.0
d.4			9.6	156.7
d.3			9.0	157.3
d.2			9.0	157.3

Sta	+	149	-	Elev
d.1		166.27	9.2	157.1
d.1			7.5	158.8 ✓
e.2			8.9	157.4
e.3			9.4	156.9
e.4			9.8	156.5
e.5			10.0	156.3
e.6			10.0	156.3
e.7			10.0	156.3
e.8			9.5	156.8 ✓
f.8			2.6	163.7
f.7			3.9	162.4
f.6			5.3	161.0
f.5			6.3	160.0
f.4			7.2	159.1
f.3			6.6	159.7
f.2			5.2	161.1
f.1			2.7	163.6
g.2			1.7	164.6
g.3			3.0	163.3
g.4			2.1	164.2
#	11.08	175.94	1.61	164.66

Bent d is the lowest one

Sta	+	AJ	-	glw
g. 5		175.74	9.3	166.4
g. 6			6.9	168.8
g. 7			5.6	170.1
g. 8			4.2	171.5 ✓
h. 5			1.9	173.8
h. 4			4.9	170.8
h. 3			7.8	167.9
h. 2			7.7	168.0
h. 1			4.3	171.4
g. 1			7.9	167.8
i. 1			1.8	174.4
i. 2			3.9	171.8
i. 3			2.6	173.1
#	11.26	186.26	0.74	175.00
i. 4			10.3	176.0
i. 5			7.3	179.0
i. 6			4.8	181.5
i. 7			4.5	181.8
i. 8			4.5	181.8
h. 6			9.4	176.9
h. 7			7.2	179.1

Sta	+	H ₂	-	Elev.
lv 8		186.26	7.0	179.3 ✓
f. 8			1.7	184.6
f. 7			2.4	183.9
f. 6			2.0	184.3
f. 5			2.3	184.0
f. 4			4.7	181.6
f. 3			7.8	178.5
f. 2			10.0	176.3
f. 1			9.5	176.8
k. 1			5.9	180.4
k. 2			4.1	182.2
k. 3			1.9	184.4
#	10.66	196.37	6.55	185.71
k. 4			10.1	186.3
k. 5			9.6	186.8
k. 6			10.2	186.2
k. 7			10.4	186.0
k. 8			10.4	186.0 ✓
l. 8			6.7	189.7
l. 7			7.2	189.2
l. 6			6.9	189.5

Sta	+	HD	-	Elev	
d 5		196.37	6.6	189.8	
d 4			6.4	190.0	
d 3			6.6	189.8	
d 2			8.3	188.1	
d 1			9.8	186.6	
#	11.80	206.88	1.29	195.08	
R.M.			0.89	205.99	206.50

Bent d is 56.2' west of west line of 48th St

4th and Ivy Street

X sec of Jay St from East side of Wm in St to 100' West of West line of Brant St

Oct 29 1891
 Humboldt Book
 Williams level 31
 Van Hook Rod
 Shurr assistant

North Rod	Elev	Sidewalk Rod	Elev	Center Rod	Elev	Sta
B.M.		Brant and Jay St.		S.E. cor		sph
		(116.4)				#
6.6	109.8	7.1	109.3	7.7	108.7	1
9.8	106.6	10.3	106.1	12.0	104.4	0+75
		(105.1)				#
				3.0	102.1	B.M.
						0+57
1.8	103.3	2.2	102.9			0+50
						0+43
2.5	102.6					

+	H ₂	-	Elev.
0.93	126.22		125.29
1.38	116.40	11.20	115.02
			100' West of Brant St
1.00	105.60	11.80	104.60
3.00	105.10	3.50	102.10
			East line of Wm in
			East line of Wm in

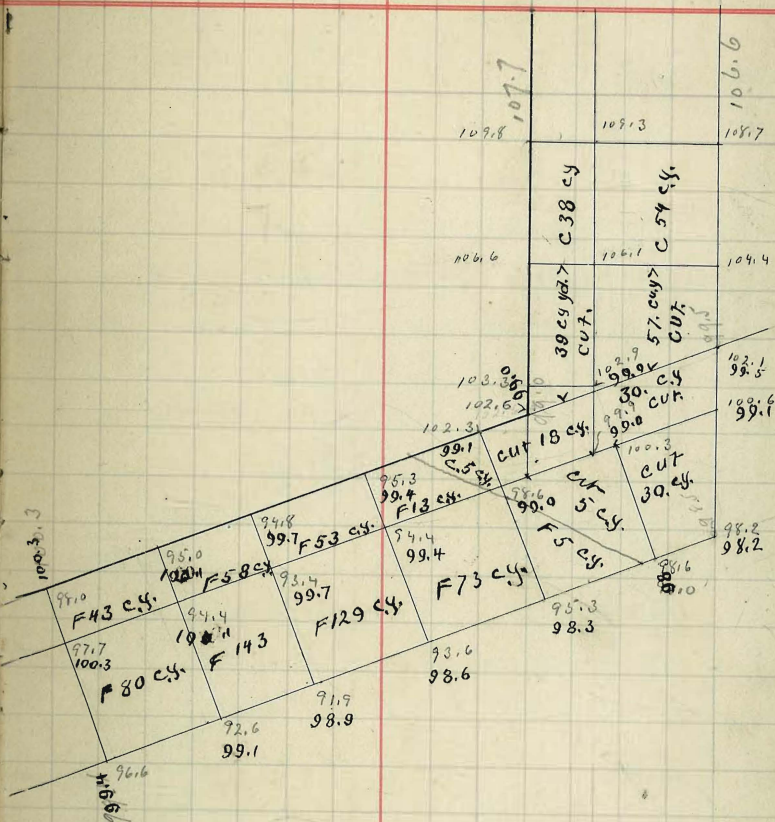
x seen on Union St bet

Center		Sidewalk		East		Sta.	+	H ₂	-	Elev.
Road	Elev	Road	Elev	Road	Elev					
			105.1							
		4.5	100.6			0+44				Point where center of Aug St intersects sidewalk line on Union
6.9	98.2					0+17				= S+65 Point where center line of Aug intersects center of Union
		5.2	99.9							Intersection of curb lines
6.5	98.6	4.8	100.3	2.0	103.1	0				North line Union
9.8	96.3	6.5	98.6	2.4	102.3	+25				
10.1	95.0					+28				
				2.5	102.6	0+14.3				= 0+43 on Aug St
11.5	93.6	10.7	94.4	9.8	95.3	0+50				
13.2	91.9	11.7	93.4	10.3	94.8	+75				
12.5	92.6	10.7	94.4	10.1	95.0	1				
8.5	96.6	7.4	97.7	7.1	98.0	+21				

Day St Intersection W. Min St

C	F	C	F	C	F
188.0		83.0	5.0	5.0	592.0

188.0	592.0
83.0	5.0
5.0	
<u>276.0</u>	<u>597.0</u>
cut	Fill
	276.0
	<u>321.0</u>



Levels on water pipe line on 25th
St bet G and J St

34

Sta	+	H ₂	-	Elev
-----	---	----------------	---	------

B.M.	11.80	155.12		146.32
------	-------	--------	--	--------

#	11.78	168.60	1.30	156.82
---	-------	--------	------	--------

#	11.76	179.48	0.91	167.69
---	-------	--------	------	--------

B.M.			2.42	177.03
------	--	--	------	--------

0			4.70	174.75
---	--	--	------	--------

1 #	10.70	187.72	2.43	177.02
-----	-------	--------	------	--------

2			8.56	179.16
---	--	--	------	--------

3			6.72	181.00
---	--	--	------	--------

+30			6.02	181.70
-----	--	--	------	--------

0			5.33	182.39
---	--	--	------	--------

B.M.			2.04	185.68
------	--	--	------	--------

1			4.45	183.27
---	--	--	------	--------

2 #	6.57	191.16	3.13	184.59
-----	------	--------	------	--------

3			5.73	185.43
---	--	--	------	--------

cap, track top Park n.w. 25th & G St
north line G St

South of J St

N of J St

Spk post n.w. cor - 25th & G.

South of G St

Road in Mission Valley

35

4
3
2
1
4 = 0
3
2
1

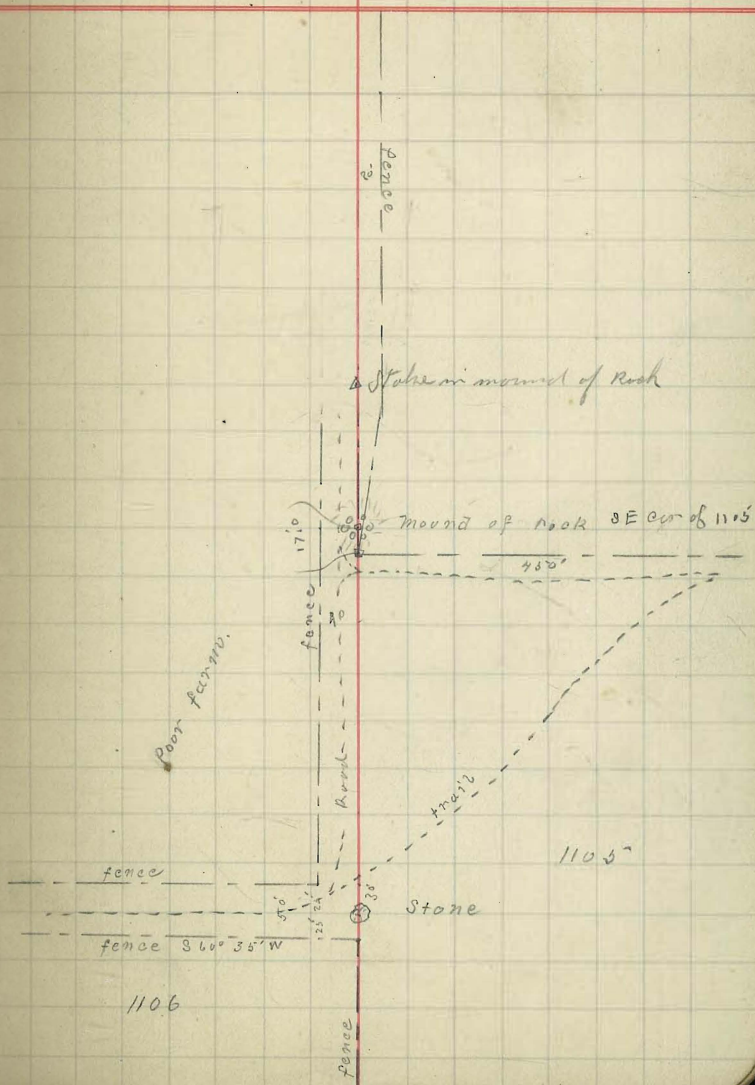
+55'

860° 35' W

899° 51' Right

529° 25' E

o set up over a stone set in the ground with low mound raised around it, S.W. cor of Pueblo lot 1106 Turned 89° 51' left
O.S. N.E. of road



+71

13

12

11

10

9

+80

8

7

6

5

fence

orchard

fence

fence

133

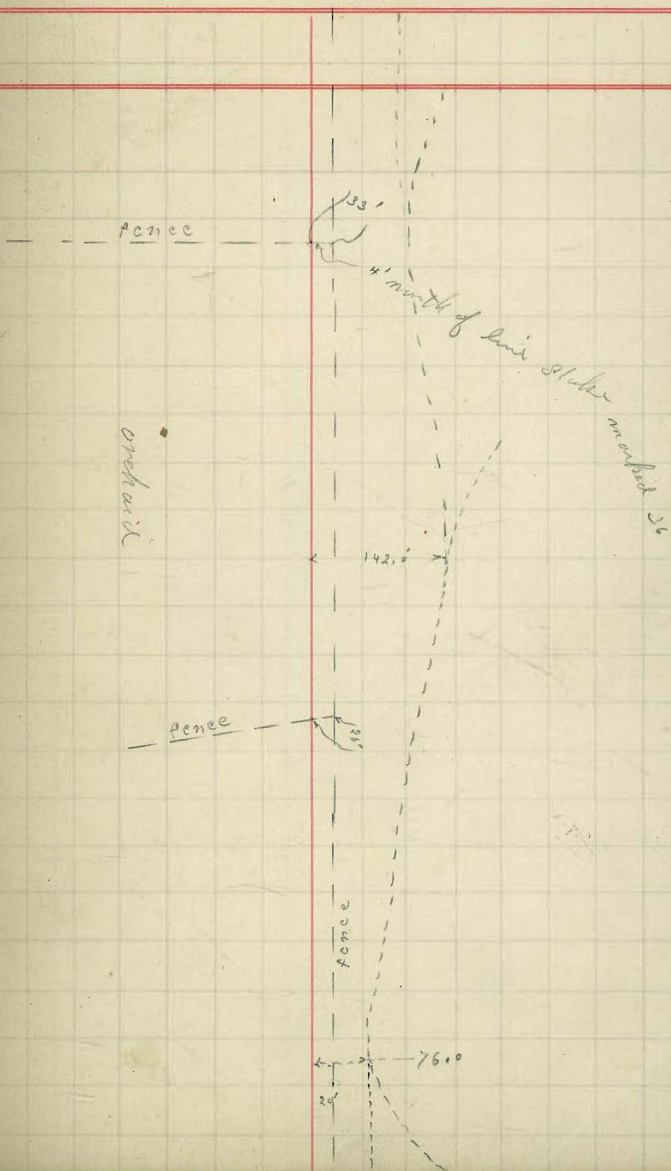
4' north of line stake marked 36

142.0

116

76.0

20'



24

23

22

21

20

19

18

17

16

15

14



Somewhat marshy
and covered with Salt grass

7 + 27.5

6

5

4

3

2

+ 14

1

+ 34

0

N 25° 30' W

+ 40

90° 03'

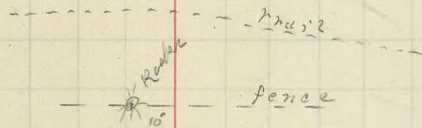
Right

26

25

fence

5.71 7427.5

Stone
ap fence an

788' along fence
to an; probably
an Quinn's place

114.0
rocks
34' on

could not find
2 large
stones outside of fence
which look as if they
had been plowed out
and rolled off the
field

Meander of Road in mission valley
West of lot 1105

39

Begin at sta 118 north of temporary
cor set for SW cor of 1105

Run as follows, along road all
Bearings are magnetic

S 52° 0' W

400' across alkaline flats

S 60° 15' W

400' across alkaline flats

S 31° 15' W

100' up slight ascent on firm ground

S 67° 25' W

300' over slight rise

S 58° 25' W

100' hill about 25' high on left

S 75° W

600' along foot of hill alkaline flats
on right

S 89° 0' W

150.0 along foot of hill

N 40° 30' W

400' Road leaves low land at this point

Road runs S 43° 30' W about 500'

N 88° 10' W

401

to SW. cor of 1104

Level on water pipe line
^{25.00}
 on 24th St E to D St

Sta	+	#2.	-	Elev.
B.M.	8.28	193.71		185.43
+ 30			7.90	185.91
0			7.57	186.14
1			5.40	188.31
2			4.63	189.08
3			5.38	188.33
+ 30			5.95	187.76
0			5.82	187.89
1			4.68	189.03
2 #	8.28	198.07	3.92	189.79
3			6.80	191.27
B.M.			<u>7.83</u>	<u>188.24</u> 188.39
+ 30			6.72	191.35
0			6.27	191.80
1			6.43	192.64
2			5.18	192.89
3			3.91	194.16
B.M.			<u>3.17</u>	<u>194.90</u> 195.02

on plug at Sta 3 South line of 11 E. St.

Pipe line on 18 St

24th and 18 St
 Pipe line on C St

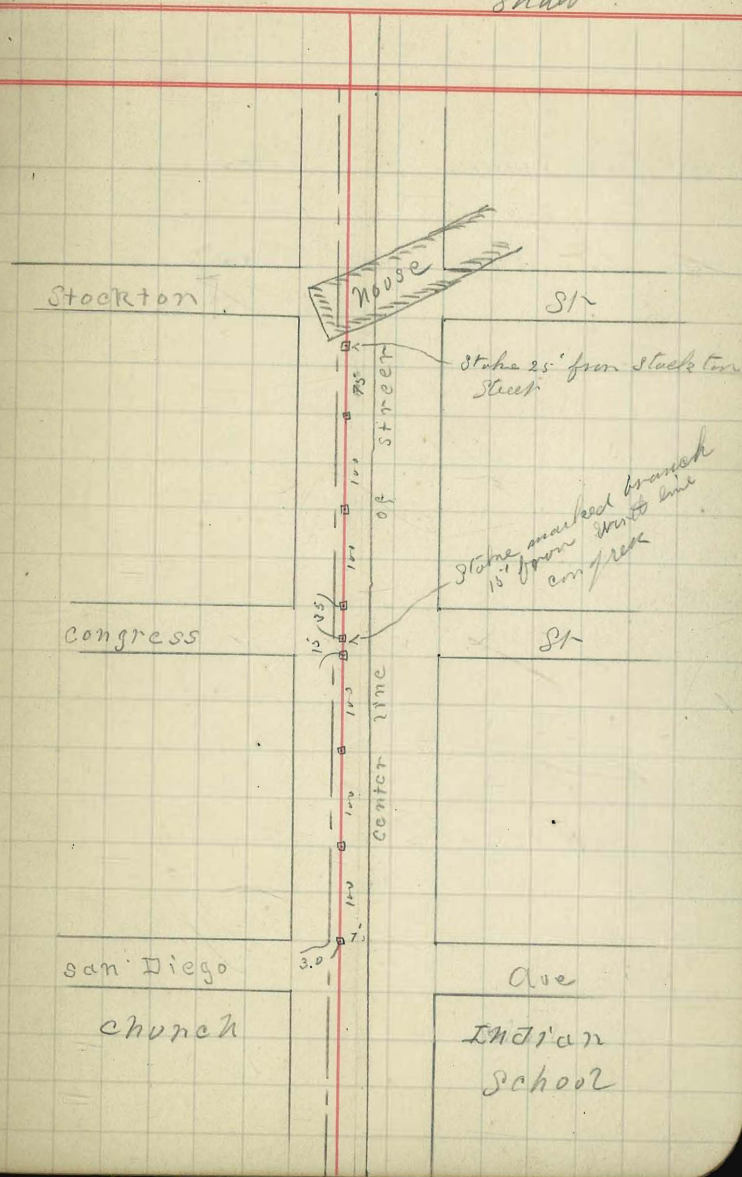
Pipeline at old Town
in Twiggs Street

Sketch showing points set for
water pipe in Twiggs Street
in old Town for water co

Nov 5

1891

Hamlin
Williams
Wan Hook 41
Shaw



Levels on 25th St. to J St

42

Sta	+	HD	-	Elev
B.M.	1.38	178.41		177.03
0			3.67	174.74
3+30			4.97	173.47
3			6.68	171.73
2 #	0.54	167.90	11.05	167.36
1			4.04	163.86
0.			9.93	158.97
B.M.			9.78	158.12
+30 #	0.15	156.58	11.47	156.43
3			0.92	155.66
B.M.			1.62	154.96
2			6.64	149.94
#	0.23	145.01	11.82	144.76
1			3.21	141.80
0 #	1.60	134.94	11.67	133.34
3+30			4.77	130.17
B.M.			7.52	127.42
				127.43

25th and J St
North line J St

South line J St

N of H St
top of Return on Middle

25th and J St. s/b fence

Road in Mission Valley

26+00

- 20
- 19
- 18
- 17
- 16
- 15
- 14
- 13
- 12
- 11
- 10
- 9
- 8
- 7
- +60
- 6
- 5
- 4
- 3
- 2
- 1
- 0

33.4' flag

30.5' flag

28' flag

28' flag

33' flag

33' flag

Levels on 25th St - I to R

Levels on 25th St main line

Sta	I	Hi	-	E
B.M.	11.27	86.77		75.5
3+30			9.65	77.12
0			7.11	79.66
1			3.34	83.43
#	11.90	98.40	0.27	86.50
2			5.26	90.14
3#	11.65	109.59	0.46	97.94
3+30			9.91	100.28
0			6.45	103.11
#	11.47	120.03	1.03	108.56
1			5.24	124.79
	11.21	130.61	0.63	119.40
2			8.76	121.85
3			1.75	128.86
B.M.			3.19	127.42
				127.433

South West cor 25 and K St

North Line of K St

North Line of J St

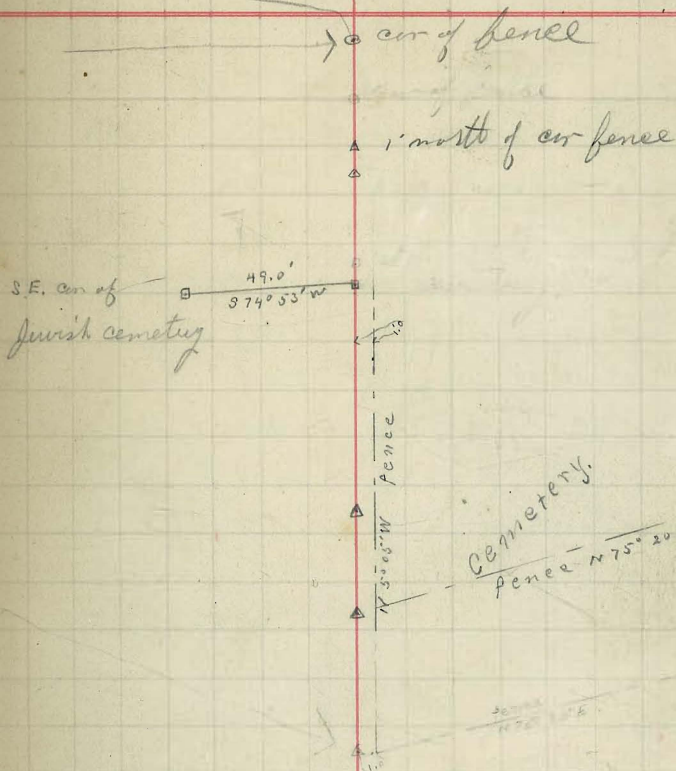
South Line J St

South East cor Spike in fence

Sta	course	Int. angle	Stadia	Dist	T.C.
27+07					
24+55		-1° 50'	2.48	248.4	
21+04.7	N 74° 55' E	+1° 50'	3.51	350.4	
18+52.3		+2° 20'	2.52	252.4	
13+06.3		+5° 50'	3.55		
12					
11					
10					
9					
8		-4° 30'	4.66	464.1	N
7					
6	N 5° 05' W	-1° 10'	1.98	198.9	N 8° 55' E
5					
4					
3		-0° 10'	3.94	395.0	
2					
1					
0	N 75° 20' E	-2° 0'	242.5		N 0° 40' E

Sta 0 is cor of fence the cor of Pueblo lots
1152, 1160, 1844 and Cemetery
Thence Run as follows all courses magnetic

from this point fence bears
N 14° 15' W mag. 45



Sta	course	back angle	Stadia	dist		
-----	--------	---------------	--------	------	--	--

Beginning at Stake Set 49' N74°05' W
from Sta 13+01.8 from SE Cor of Jewish
Cemetery run as follows

A to B	S67°55'W	0°45'	1.81	182.0	✓	B
B to C	N52°36'W	+4°50'	2.14	213.5	✓	C
C to D	N4°16'W	+5°0'	1.75	174.7	✓	D
D to E	N55°14'E	+1°0'	3.76	376.8	✓	E
E to F	S5°10'E	-3°10'	2.43	242.3		F
F to A	" "	-7°10'	2.12	209.7		
A to B	N67°53'W to Sta 10.					

} corner on left

} along fence 50' West

Calculation to determine
all of land lying north of RR
and between cemetery fence and

common west, in Mt Hope Cem
land to be granted for
Jewish Cemetery

Bearing	Dist.	Latitude		Departure	
		N	S	E	W
S 67° 55' W	182.0		68.4		168.6
N 52° 36' W	213.5	129.7			169.6
N 4° 16' W	174.7	174.2			12.9
N 55° 14' E	376.8	214.9		309.5	
S 5° 08' E	453.0		451.2	40.8	
		518.8	519.6	350.0	351.1
			518.8		350.0
			0.8		1.1

Corrected.

"	"	N	S	E	W	L
S 67° 55' W	182.0		68.3		168.2	-68.3
N 52° 36' W	213.5	129.8			169.3	+129.8
N 4° 16' W	174.7	174.3			12.8	+174.3
N 55° 14' E	376.8	215.1		309.9		+215.1
S 5° 08' E	453.0		450.9	40.6		+450.9
		519.2	519.2	350.5	350.3	

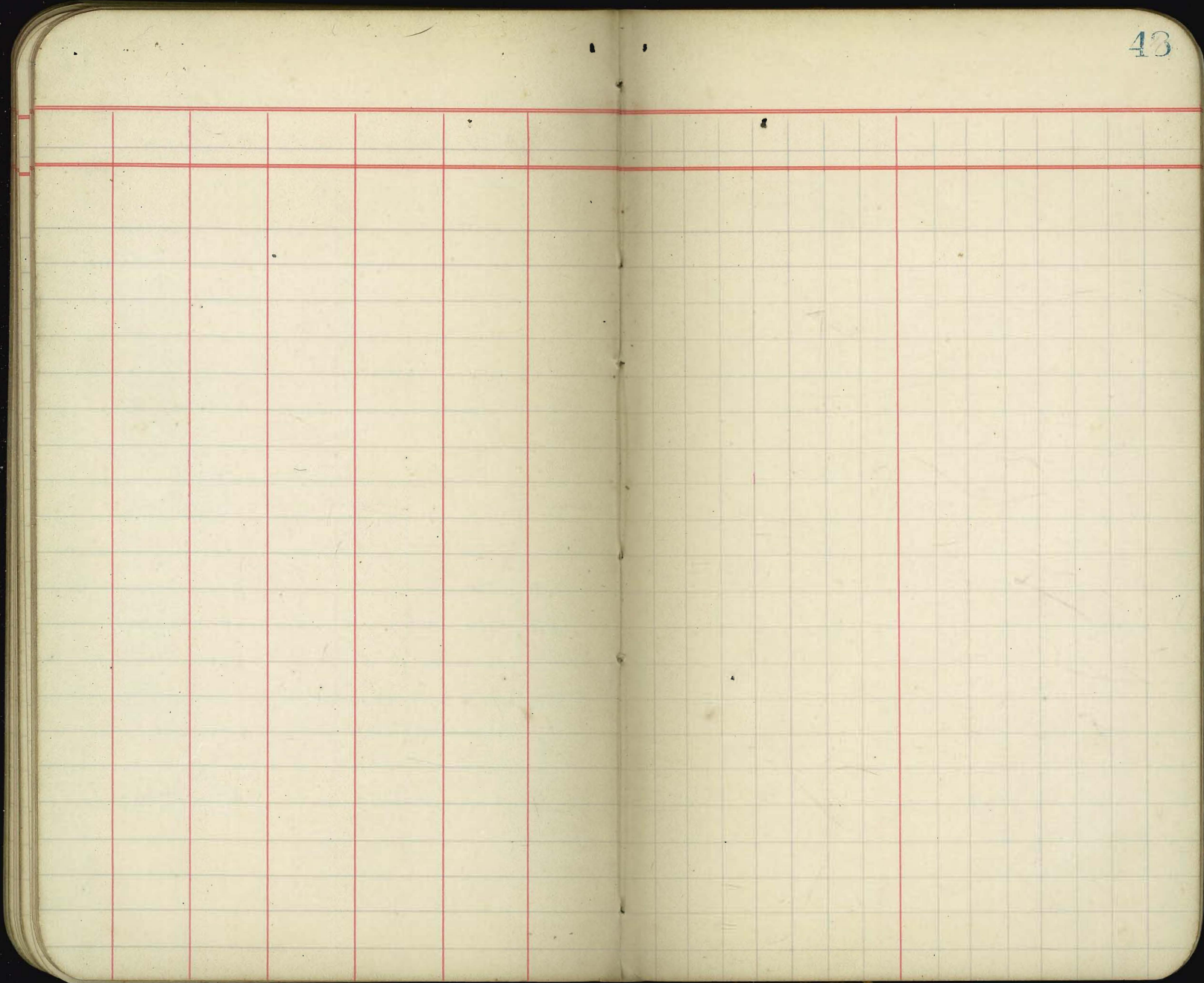
D.M.□	+	-
432.8		29560.2
195.3	25,349.9	
13.0	2265.9	
+ 309.9	66,659.5	
660.4		297,774.4
	94,275.3	327,334.6
		94,275.3

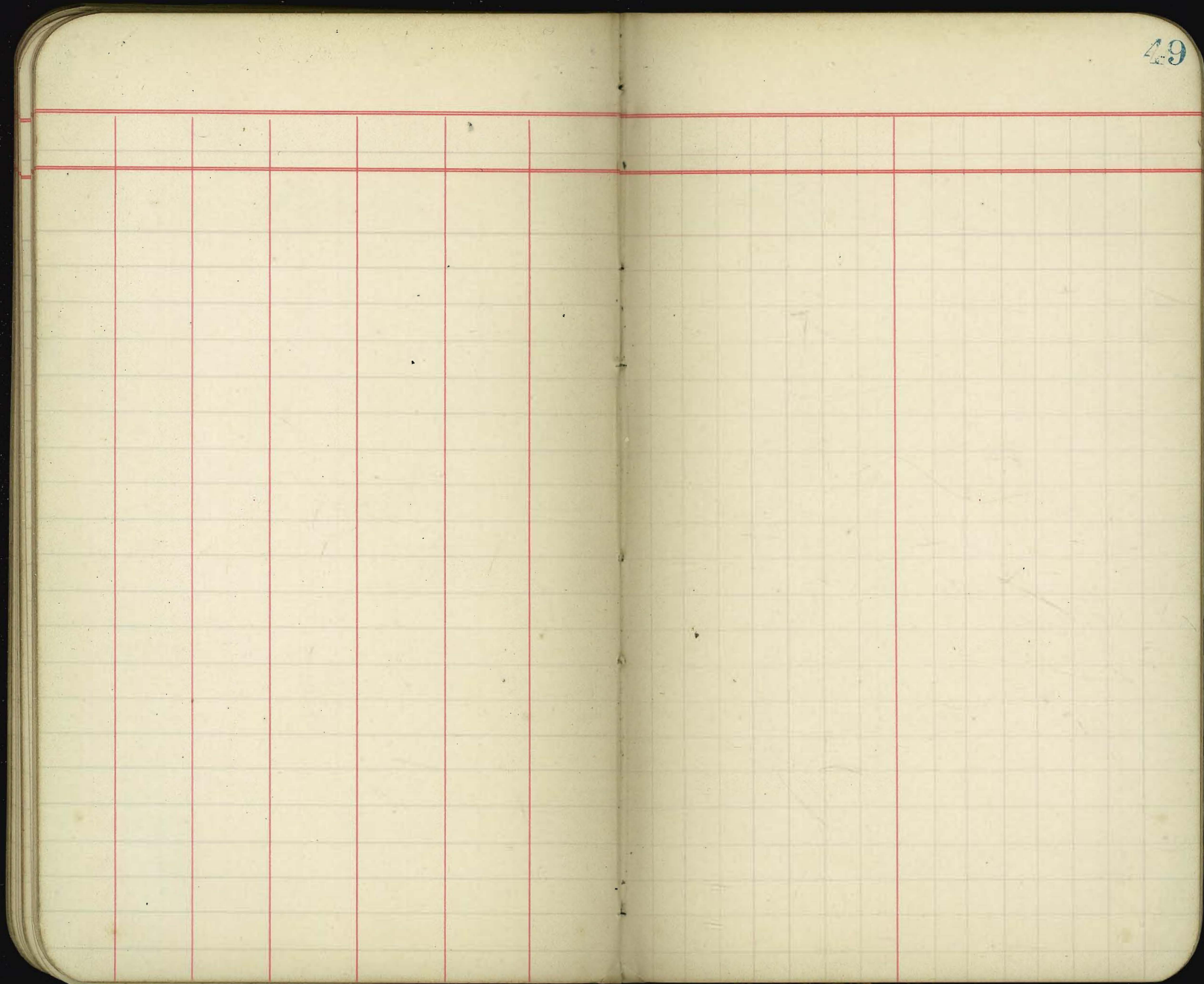
43500

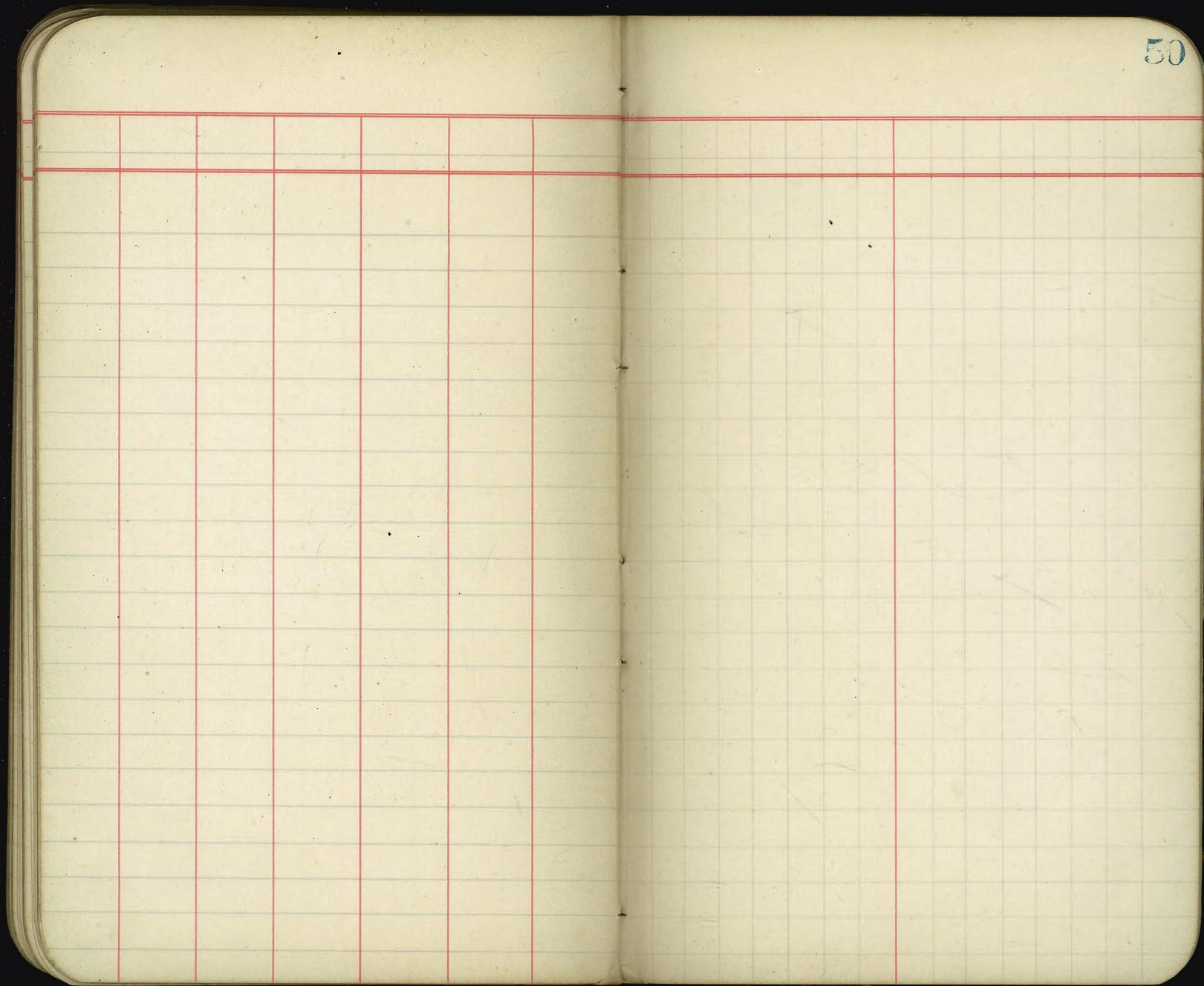
233,057.3
217,800
152,593
130,680
219,130
217,800
133,000

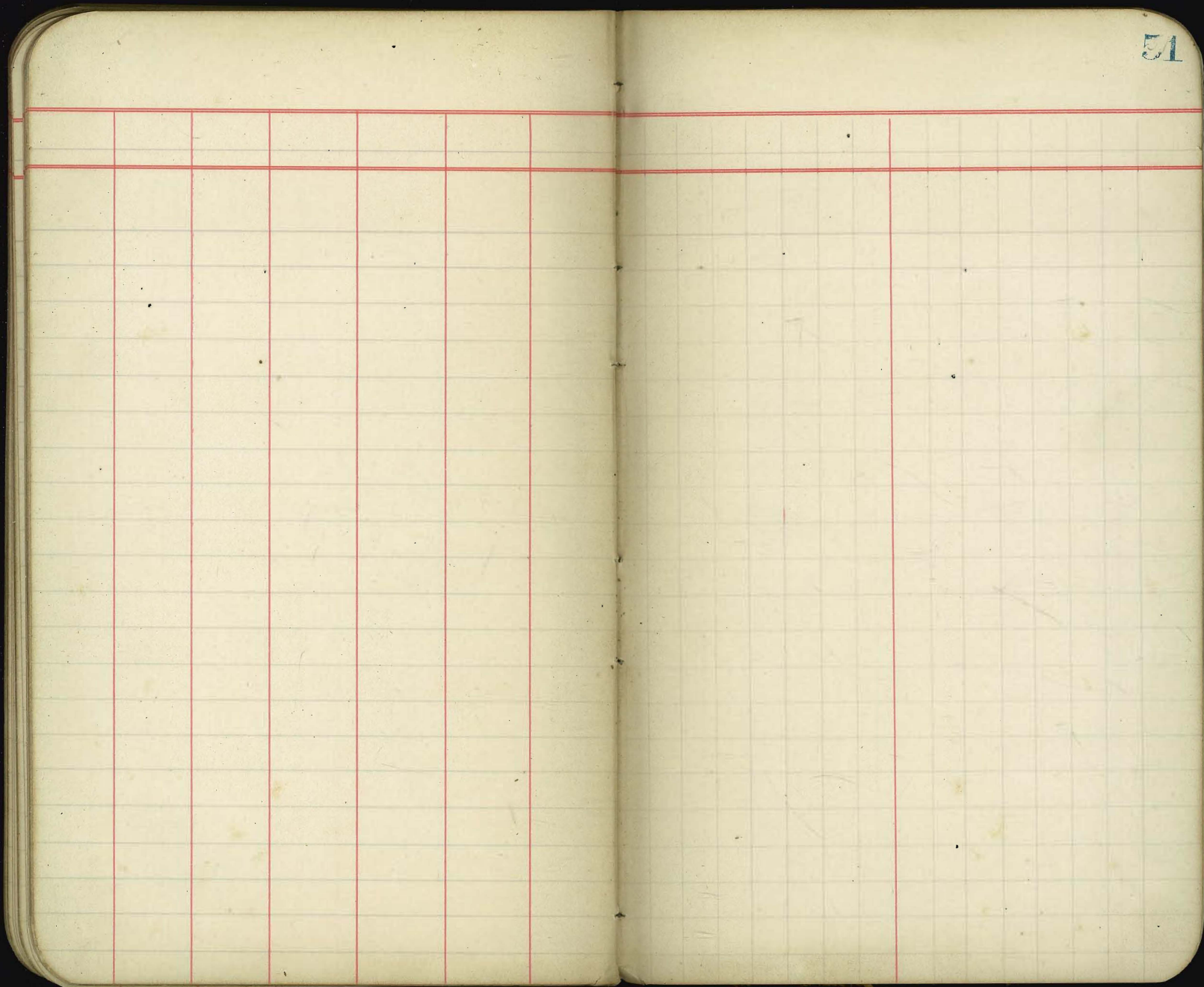
43560

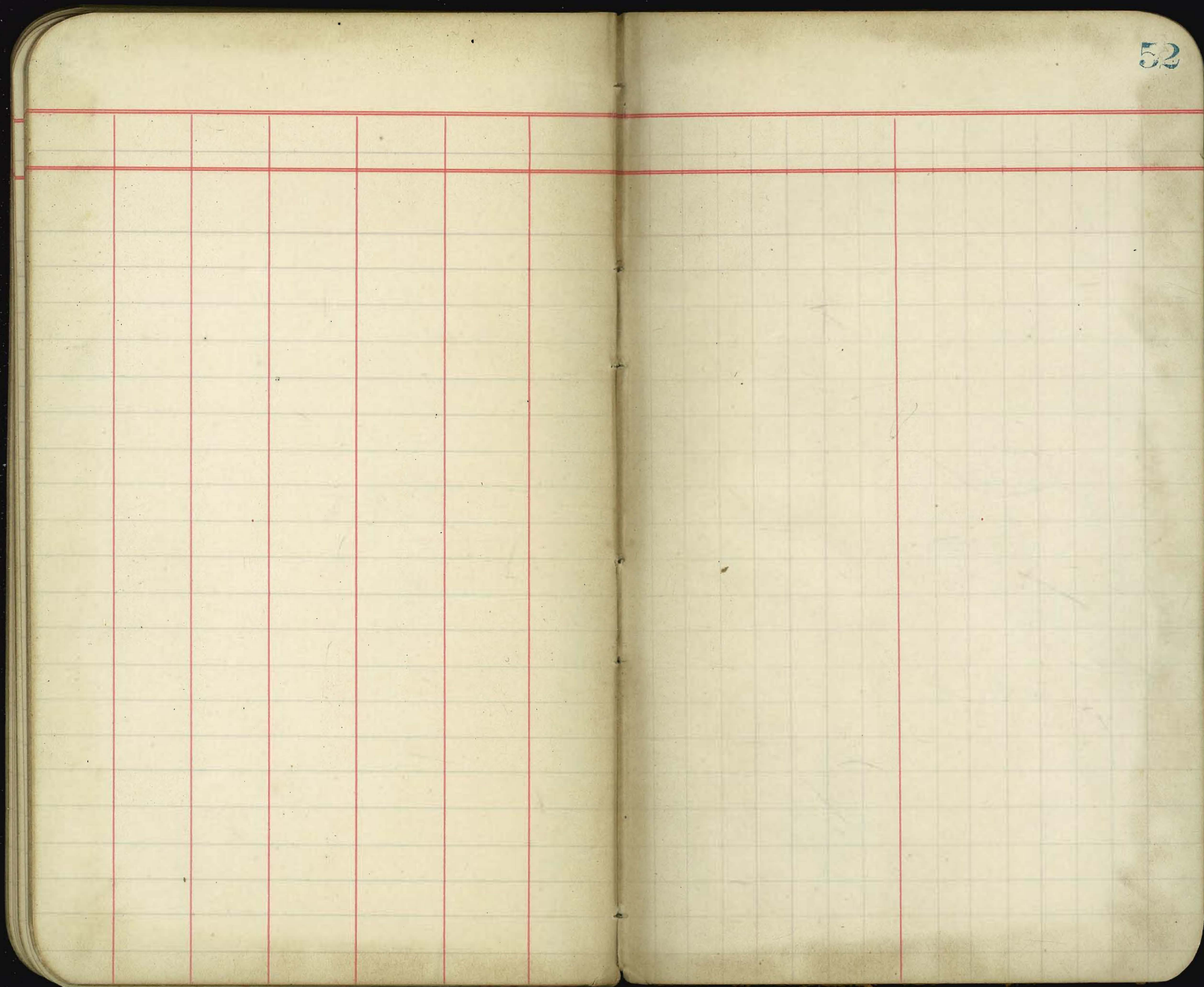
5.35 acm.











0	East line of 22nd St
4+06	West line of 24th St
<u>36</u>	
7+42	10' East of center of 24th St
<u>26</u>	
4+68	South line of 14th St
3+00	
7+68	W of 2nd St
<u>80</u>	
8+48	South of 14th St
<u>1.51</u>	
9+99	alley
4+08	
<u>14+07</u>	East line of 22nd St

406
 36
 26
 3.00
 80
 1.51
 4.08

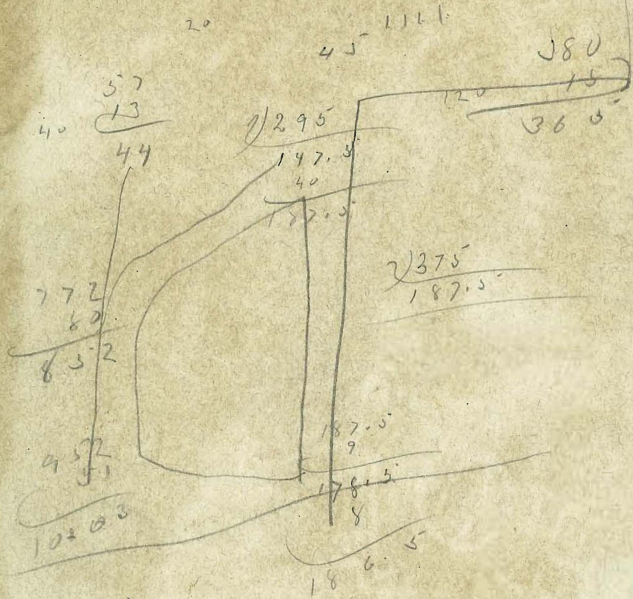
 14.07

406
 40
 4.46
 26

 4.72

Return to City Engineers Office
 City Hall, San Diego, Cal. 24th

on 24th. to alley bet h & m on
 on 24 then west to east of 22nd



1048
 508
 1451

406.0

~~380~~ 75' 64

Return to City Engineers Office

City Hall, San Diego, Cal. West
 of N. E. of 4th St

600
 100
 300

150

157
 8.5
 2.6

bar

100
 56.2
 43.8

63.7
 2
 58.2

Point 1.84 East of center of 3rd

11.0 68.3

63
 2

71.2

638

11.0 588

562

11.2

26.3
 7.4
 24.6

21.6
 2
 18.6

19.5

52 x 2 638
 x 8 8
 558

11.2