

Campus Are.
MADISON AVE.

196

400

LEVEL

F.B. 196

Table showing the distance, latitude and departure in running 80 chains at any course from 1 to 60 minutes.

MINUTES	LKS.	MINUTES	LKS.	MINUTES	LKS.
1	2 1/3	21	49	41	95 2/3
2	4 2/3	22	51 1/3	42	98
3	7	23	53 2/3	43	100 1/3
4	9 1/3	24	56	44	102 2/3
5	11 2/3	25	58 1/3	45	105
6	14	26	60 2/3	46	107 1/3
7	16 1/3	27	63	47	109 2/3
8	18 2/3	28	65 1/3	48	112
9	21	29	67 2/3	49	114 1/3
10	23 1/3	30	70	50	116 2/3
11	25 2/3	31	72 1/3	51	119
12	28	32	74 2/3	52	121 1/3
13	30 1/3	33	77	53	123 2/3
14	32 2/3	34	79 1/3	54	126
15	35	35	81 2/3	55	128 1/3
16	37 1/3	36	84	56	130 2/3
17	39 2/3	37	86 1/3	57	133
18	42	38	88 2/3	58	135 1/3
19	44 1/3	39	91	59	137 2/3
20	46 2/3	40	93 1/3	60	140

Return to City Engineers Office
City Hall, San Diego, Cal.
TABLE FOR RUNNING ON SLOPES.

In the following table the first column shows the angle, the second the number of links to be added to a chain on the slopes, to make one chain, horizontal measurement.

Angle	COR. IN LINKS	Angle	COR. IN LINKS	Angle	COR. IN LINKS	Angle	COR. IN LINKS
0		0		0		0	
4	0.24	11	1.88	18	5.14	25	10.54
5	0.38	12	2.24	19	5.76	26	11.26
6	0.55	13	2.63	20	6.42	27	12.24
7	0.76	14	3.06	21	7.11	28	13.37
8	0.98	15	3.53	22	7.85	29	14.34
9	1.24	16	4.02	23	8.64	30	15.47
10	1.55	17	4.56	24	9.47	35	22.07

68.5
69
4.37
196 44.28
348.75
6.95

Return to City Engineers Office
City Hall, San Diego, Cal.

245
9.8 | 112.7 | 1.3
98
2.90
2.94

2.2 | 14.0 | 6.4
13.2
80

200

20

7.5 / 20 (2.66
150
5-00
450
5'0

Georgia's St.

Hutchinson
1/29/85
Evans
Lawyer

1

No. Line of Adams

Bm.	7.65	359.43	351.78
W.L.		5.5	353.9
-		5.8	353.6
1/4		5.9	353.5
Ch.		6.1	353.3
1/4		5.4	354.0
-		6.2	353.2
East line		5.9	353.5

Hub
S.W. Cor.
Madison
& Georgia

No. Curve of Adams

E.L.		6.1	353.3
-		6.7	354.7
A		6.8	352.6
Ch.		6.3	354.1
A		6.0	353.4
-		5.6	353.8
W.L. line		5.8	353.6

No 14 Line of Adams

W.L.	5.6	353.8
-	3.7	355.5
4	4.3	355.1
Ch.	5.5	353.9
4	6.5	354.9
-	6.6	354.3
E.L.	6.8	354.6

Center Line of Adams

East Line	6.6	354.8
-	6.5	354.9
4	6.4	353.0
Ch.	4.6	354.8
4	4.1	355.3
-	4.5	354.9
W.L.	5.8	353.6

No 14 Line of Adams

W.L.	5.1	354.3
-	5.6	353.8
4	5.4	354.0
Ch.	5.8	353.6
4	6.6	354.8
-	6.9	353.4
E.L.	5.4	354.0

No Curb Line

E.L.	5.7	353.7
-	6.5	352.9
4	6.6	354.8
Ch.	6.5	354.9
4	5.9	352.5
-	4.7	355.7
W.L.	5.0	354.4

466,1' N^o of Madison

W.L.	359.43	5.7	353.7
-		5.6	353.8
A		6.0	353.4
Cl.		5.7	353.7
A		6.3	353.1
-		5.9	353.5
East line		6.3	353.1

450' N^o of Madison

East L.		5.5	353.9
-		5.2	354.2
A		5.6	353.8
Cl.		5.7	353.7
A		5.9	353.5
-		5.9	353.5
W.L.		5.3	355.1

420' N^o of Madison

W.L.		5.9	353.5
-		6.0	353.4
A		6.3	353.1
Cl.		6.3	353.1
A		6.6	352.8
-		6.6	352.8
East L.		6.5	352.9

400' N^o of Madison

East L.		5.9	353.5
-		6.5	352.9
A		6.5	352.9
Cl.		5.3	354.1
A		5.2	354.2
-		4.7	354.7
W.L.		4.6	354.8

375' N^o of Madison

W.L.	359.43	6,1	353.3
-		6,1	353.3
Δ		6,5	352.9
Cl.		6,4	353.0
Δ		6,3	353.1
-		6,6	352.8
East L.		6,4	352.0

350' N^o of Madison

E.L.		5,6	353.8
-		6,3	353.1
Δ		5,8	353.6
Cl.		4,8	354.6
1/4		4,6	354.8
-		6,1	353.3
W.L.		5,1	354.3

325' N^o of Madison

W.L.		5,7	353.7
-		6,2	353.2
Δ		6,3	353.1
Cl.		6,7	353.2
1/4		6,4	353.0
-		6,2	353.2
7' West of East line		5,6	353.8
East L.		6,1	353.3

300' N^o of Madison

East L.		6,7	352.7
-		6,5	352.9
Δ		6,3	352.1
Cl.		6,0	353.0
Δ		6,2	353.2
-		6,1	353.3
W.L.		6,0	353.4

275' N^o of Madison

West L. 359.43 4.2 355.2

— 5.2 354.2

3' West of 1/4 Lns 6.1 353.3

1/4 6.1 353.3

3' West of Ct. 6.1 353.3

Ct. 5.7 353.7

1/4 5.0 354.4

— 5.8 353.6

East Line 6.9 352.5

265' N^o of Madison

East L. 6.0 354.4

— 6.3 353.1

1/4 5.4 354.0

Ct. 6.0 353.4

1/4 6.3 353.1

— 4.6 354.8

West Line 5.0 355.7

250' N^o of Madison

West L. 4.6 354.8

— 4.8 354.6

A 6.3 353.1

Ct. 6.0 353.4

A 6.2 353.2

— 6.2 353.2

East L. 5.1 354.3

240' N^o of Madison

East L. 5.8 353.6

— 5.7 353.7

A 5.5 353.9

Ct. 5.2 354.2

A 6.2 353.2

— 5.6 353.8

W.L. 5.4 354.0

225' N of Madison

West L.	359.43	4.6	354.8
-		6.2	353.2
A		6.3	353.1
CX.		5.9	353.5
A		6.0	353.4
-		6.4	353.0
East L.		6.2	353.2

200' N of Madison

East L.		5.6	353.8
-		4.8	354.6
A		5.6	353.8
CX.		6.3	353.1
A		6.4	353.0
-		5.5	353.7
W.L.		5.1	354.3

185' N of Madison

W.L.		5.2	354.2
-		4.1	354.3
A		4.5	354.9
CX.		6.4	353.0
A		6.3	353.1
-		5.7	353.7
East L.		5.3	354.1

175' N of Madison

East L.		5.9	353.5
-		6.3	353.1
A		6.4	353.0
CX.		6.3	353.1
6' West of CX.		6.4	353.0
1/4		5.1	354.3
5' East of Curt		4.5	354.9
Curt.		4.6	354.8
West Lim		5.9	353.5

150' N of Madison

West line	35943	6.1	353.3
-		6.1	353.3
A		4.8	354.6
Ch.		4.6	354.8
A		6.6	352.8
-		6.3	353.1
East L.		4.9	354.5

125' N of Madison

East L.		6.0	353.4
-		6.0	353.4
A		6.1	353.3
Ch.		6.2	353.2
A		6.4	353.0
-		6.2	353.2
West line		5.5	353.9

100' N of Madison

West Line		6.0	353.4
-		6.4	353.0
A		5.9	353.5
Ch.		5.6	353.8
A		5.2	354.2
-		6.5	352.9
East Line		6.7	352.7

75' N of

East Line		7.2	352.2
-		6.5	352.9
A		6.1	353.3
Ch.		6.5	352.9
A		6.6	352.8
-		6.4	352.0
West L.		5.8	353.9

50' N^o of Madison

W.L.	359.43	6.2	353.2
-		6.2	353.2
A		6.6	352.8
Ch		6.9	352.5
A		6.9	352.9
-		6.4	353.0
East L.		7.0	352.4

25' N^o of Madison

East L.		7.3	352.1
-		7.2	352.2
A		7.1	352.3
Ch		6.0	353.4
A		5.1	354.3
-		6.0	353.4
W.L.		6.2	353.2

N^o Line of Madison

West L.		7.0	352.4
-		6.9	352.5
A		6.5	352.9
Ch		7.0	352.4
A		7.6	351.8
-		6.9	352.5
East L.		6.5	352.9

N^o Curt Line of Madison

East L.		7.0	352.4
-		7.5	351.9
A		7.7	351.7
Ch		7.5	351.9
A		7.1	352.3
-		7.3	352.1
W.L.		7.0	352.4

77 1/4 Line of Madison

West Line	35943	7.1	352.3
-		7.1	352.3
4		7.5	351.9
ct.		7.8	351.6
4		7.7	351.7
-		8.0	351.4
East Line		8.4	351.0

Center Line of Madison

East L.		8.0	351.4
-		7.7	351.7
4		7.4	352.0
ct.		7.1	352.3
4		6.9	352.5
-		6.7	352.7
West Line		6.7	352.7

20 1/4 Line of Madison

West Line	35943	7.4	352.0
-		7.4	352.0
4		7.4	352.0
ct.		7.5	351.9
4		7.9	351.5
-		8.1	351.3
East Line		8.6	350.8

No Curt Line of Madison

East Line		7.5	351.9
-		7.8	351.6
6' East of 1/4		8.7	351.2
1/4		7.4	352.0
8' East of ct.		6.8	352.6
ct.		6.6	352.8
1/4		7.3	352.1
Curt		8.1	351.3
West Line		7.9	351.5

Georgia St Quit 7/20/5

So Line of Madison			
West Line	359.43	7.7	351.7
-		7.9	351.5
4		8.1	351.3
Ct.		8.4	351.0
4		8.3	351.1
-		8.2	351.2
East Line		7.2	352.0
B.M. 5.14	356.92	7.65	351.78
20' South Madison			
West L.		5.3	351.6
-		4.4	352.5
1/4		4.6	352.3
Ct.		5.5	351.4
1/4		5.1	351.8
-		5.6	351.3
East Line		6.4	350.5

7/20/5 Hutchison
Evans
Sawyer

10

35' South Madison			
East L.	356.92	6.2	350.7
-		5.1	351.8
4		5.6	351.3
Ct.		5.1	351.8
1/4		4.7	352.7
-		4.5	352.4
West L.		5.3	351.6
50' South			
West L.		5.6	351.3
-		5.7	351.0
4		5.4	351.5
Ct.		6.0	350.9
4		6.2	350.7
-		6.1	350.8
East L.		6.7	350.2

75' South Madison

East L.	35692	5.5	351.4
-		4.6	352.3
A		5.4	351.5
Ch.		5.5	351.4
A		5.5	351.4
-		5.7	351.2
W.L.		5.5	351.4

100' South

W.L.		5.7	351.2
-		5.6	351.3
A		5.8	351.1
Ch.		5.0	351.9
A		5.2	351.7
-		6.8	350.1
East L.		6.6	350.1

125' South Madison

East L.		6.7	350.2
-		6.5	350.4
A		6.6	350.3
Ch.		6.6	350.3
A		6.4	350.5
-		6.2	350.7
West L.		5.7	351.2

150' South Madison

W.L.		6.0	350.9
-		5.0	351.9
1/4		5.1	351.8
Ch.		5.7	351.7
1/4		6.5	350.4
-		6.5	350.4
East L.		6.4	350.3

Georgia St.

12

165' South of Madison

East L.	35692	7.0	349.9
-		6.4	350.5
A		6.0	350.9
ct.		4.8	352.1
A		5.0	351.9
-		5.7	351.7
West L.		6.2	350.7

170' South

W L		5.8	351.1
-		5.5	351.4
A		5.7	351.2
ct.		5.5	351.4
A		5.9	351.0
-		6.3	350.6
East L.		6.9	350.0

200' South of Madison

East L.		7.4	349.5
-		7.0	349.9
A		6.7	350.2
ct.		6.6	350.3
A		6.9	350.0
-		6.3	350.6
West L.		5.8	351.1

225' South

W L		4.3	352.6
-		5.5	351.4
A		6.9	350.0
ct.		6.7	350.2
A		5.6	351.3
-		5.3	351.6
East L.		7.6	349.3

935' Soof

E.L.	7,3	349.6
-	6,1	350.8
A	6,7	350.2
Cl.	7,1	349.8
9' West of Cl,	6,8	350.1
114	5,8	351.1
-	4,3	352.6
West L	4,4	352.5

950' Soof

West L	6,1	350.8
-	5,8	351.1
A	6,9	350.0
Cl.	7,0	349.9
A	7,2	349.7
-	7,3	349.6
East line	6,3	351.6

275' Soof

East L.	8,0	348.9
-	7,5	349.4
44	5,5	351.4
Cl.	4,5	352.4
14	5,6	351.3
-	6,8	350.1
W.L.	6,3	350.6

300' Soof

W.L.	6,0	350.9
-	6,9	350.0
A	6,7	350.2
Cl.	6,7	350.2
A	6,9	350.0
-	7,6	349.3
East line	6,9	350.0

325' East Madison

E.L.	35692	7.3	349.6
-		7.3	349.6
A		7.8	349.1
Cl.		6.6	350.3
A		6.2	350.7
-		6.0	350.9
West L.		6.4	350.5

350' East Madison

West L.		6.8	350.1
-		7.1	349.8
10' East of Curt		6.2	350.7
1/4		6.9	350.0
Cl.		6.4	350.5
1/2		7.4	349.5
-		7.8	349.1
East L.		7.8	349.1

375' East Madison

East L.	35692	7.7	349.2
-		7.4	349.5
A		7.6	349.3
Cl.		6.8	350.1
A		7.2	349.7
-		7.2	349.7
West L.		6.8	350.1
		6.62	350.30
	4.20	355.98	351.78
	2.98	353.54	5.32 350.00

400' East

West L.		3.7	350.3
-		3.9	349.6
A		4.0	349.5
Cl.		3.6	349.9
A		3.6	349.9
-		3.1	350.4
East L.		7.9	350.6

425' East Madison

East line	353.54	48	348.7
cb,		48	348.7
1/4		43	349.2
ct,		42	349.3
1/4		36	349.9
-		40	349.5
West L.		43	349.2

435' East

West L.		42	349.3
-		35	350.0
4' West of 1/4 line		31	350.4
1/4		43	349.2
ct,		42	349.3
1/4		47	348.8
-		48	348.7
East L.		49	348.6

450' East

East L.		43	349.2
-		47	348.8
1/4		47	348.8
ct,		43	349.2
1/4		44	349.1
-		46	348.9
West L.		44	349.1

475' East Madison

West L.		43	349.2
7' East of West line		41	349.4
-		53	348.2
1/4		54	348.1
ct,		47	348.8
1/4		54	348.1
4' East of 1/4 line		44	349.1
cb,		52	348.3
East line		59	347.6

500' South of Madison

East L.	35354	67	346.8
-		67	346.8
4		56	347.9
ct.		50	348.5
4		55	348.0
-		49	348.6
West L.		46	348.9

510' South

West L.		41	349.4
-		41	349.4
44		56	347.9
ct.		50	348.5
44		60	347.5
-		69	346.6
East L.		69	346.6

525' South

East L.		7.0	346.5
-		6.6	346.9
4		6.2	347.3
ct.		5.7	348.3
44		5.9	347.6
-		5.7	347.8
West L.		5.3	348.2

550' South

West L.		5.6	347.9
-		5.9	347.6
4		6.2	347.3
ct.		5.5	348.0
4		5.5	348.0
-		5.9	347.8
East L.		6.7	346.8

565' South Mission

East L.	53,54	68	346.7
-		56	347.9
2' East of 1/4 line	54		348.1
1/4		6,2	347.3
ct.		56	347.9
1/4		6,1	347.4
3' West of 1/4 line		4,4	349.1
ct.		4,1	349.4
W.L.		4,4	349.1
575' South			
W.L.		4,9	348.6
-		4,0	349.5
* 2' West of 1/4 line		4,5	349.0
1/4		6,1	347.4
ct.		5,7	347.8
1/4		6,3	347.2
-		6,9	346.6
East line		6,7	346.8

347,25
17

(600' South) North Line of Monroe

East line		5,2	348.3
-		5,5	348.0
A		6,4	347.1
ct.		5,8	347.7
A		6,1	347.4
-		5,8	347.7
West L.		6,0	347.5
N ^o East of Monroe			
W.L.		6,2	347.3
-		6,3	347.2
A		6,3	347.2
ct.		5,9	347.6
A		5,8	347.7
-		5,5	348.0
East L.		5,5	348.0

9/10/44 Pine 06

E L	35354	6,6	346,9
-		6,6	346,9
A		6,5	347,5
Ch		6,9	347,6
A		6,2	347,3
-		6,2	347,3
W L		6,2	347,3
B.M.	485		347,69

cut S.W. cor of Monrovia Georgia

Compus

Ave

5.67 348.53 ⁸ } Davis
²⁸ } North
⁶⁵ } South 342.86

3.93 351.70 0.76 347.77

So. line Jackson

W. Line 4.3 347.4

Cb. 4.3 347.4

1/4 4.2 347.5

C 3.9 347.8

1/4 3.9 347.8

Cb 4.0 347.7

E Line 4.3 347.4

25' 50

C Line 4.9 346.8

Cb 4.5 347.2

1/4 4.3 347.4

C 4.2 347.5

1/4 4.7 347.0

Cb { 4.7 347.0
 5.4 346.3
 4.8 346.9

W. Line 4.8 346.9

Jackson

To.

19

50' 50

W. Line 4.9 346.8

Cb 4.9 346.8

1/4 4.8 346.9

C 4.4 347.3

1/4 4.5 347.2

Cb 4.8 346.9

E Line 4.3 347.4

75' 50

E Line 4.1 347.6

Cb 5.0 346.7

1/4 4.7 347.0

C 4.6 347.1

1/4 4.6 347.1

Cb { 4.8 346.9
 5.2 346.5

W. Line 4.8 346.9

Campus Ave

(351.70)

100' 50 JACK.

W Line	5.0	346.7
Cb	{ 4.9	346.8
	{ 5.5	346.2
1/4	5.0	346.7
C	4.6	347.1
1/4	4.8	347.9
Cb	{ 4.5	347.2
	{ 5.3	346.4
E Line	4.4	347.3

125 50

E Line	4.4	346.3
Cb	{ 4.7	347.0
	{ 5.3	346.4
1/4	4.8	346.9
C	4.7	347.0
1/4	5.2	346.5
Cb	{ 5.1	346.6
	{ 5.6	346.1
W Line	5.1	346.6

150' 50

W Line	5.2	346.5
Cb	{ 5.2	346.5
	{ 5.6	346.1
1/4	5.2	346.5
C	4.8	346.9
1/4	5.2	346.5
Cb	{ 4.9	346.8
	{ 5.5	346.2
E Line	4.8	346.9

175 50

E Line	5.0	346.7
Cb	{ 5.2	346.5
	{ 5.7	346.0
1/4	5.4	346.3
C	5.9	345.8
1/4	5.3	346.4
Cb	{ 5.5	346.2
	{ 5.9	345.8
W Line	5.2	346.5

Campus Ave

351.70

200' 50 JACK

W Line	5.4	346.3
Cb	5.4	346.3
5' E of Cb	5.7	346.0
1/4	5.4	346.3
CR	4.9	346.8
1/4	5.4	346.3
Cb	5.3	346.4
E Line	5.1	346.6

225' 50

E Line	5.0	346.7
3' E of Cb	5.4	346.3
Cb	5.8	345.9
1/4	5.1	346.6
CR	4.9	346.8
1/4	5.3	346.4
Cb	{ 5.6 5.9	{ 346.1 345.8
W Line	5.6	346.1

250' 50

W Line	5.1	346.6
Cb	{ 5.6 6.0	{ 346.1 345.7
1/4	5.3	346.4
C	4.9	346.8
1/4	5.3	346.4
Cb	5.9	345.8
2' E of Cb	5.3	346.4
E Line	5.1	346.6

275' 50

E Line	5.2	346.5
4' E of Cb	5.3	346.4
Cb	6.0	345.7
1/4	5.1	346.6
C	5.0	346.7
1/4	5.3	346.4
Cb	{ 5.8 6.2	{ 345.9 345.5
W Line	5.5	346.2

Campus Ave

351.70

300' 50 JACK

W. Line	5.7	346.0
Cb	5.7	346.0
6' E of Cb	5.8	345.9
1/4	5.4	346.3
0	5.2	346.5
1/4	5.2	346.5
Cb	5.7	346.0
2' E of Cb	5.1	346.6
E Line	5.0	346.7

325' 50

E Line	5.4	346.3
2' E of Cb	5.6	346.1
Cb	6.1	345.6
1/4	5.6	346.1
0	5.5	346.2
1/4	5.5	346.2
Cb	{ 5.7 6.2	{ 346.0 345.5
W. Line	5.6	346.1

351' 50

W. Line	5.5	346.2
Cb	{ 5.5 6.0	{ 346.2 345.7
1/4	5.4	346.3
0	5.5	346.2
1/4	5.9	345.8
Cb	6.1	345.6
2' E of Cb	5.5	346.2
E Line	5.4	346.3

T.P. 2.97 349.26 5.41

375' 50

E Line	3.0	346.3
3' E of Cb	3.5	345.8
Cb	4.0	345.3
1/4	3.3	346.0
0	3.1	346.2
1/4	3.5	345.8
0	4.0	345.3
1' W of Cb	3.6	345.7
W. Line	3.1	346.2

38
Campus Ave

349.26
400 So Jack

W Line	3.2	346.1
Cb	3.5	345.8
5' E of Cb	3.8	345.5
1/4	3.6	345.7
C	3.2	346.1
1/4	3.1	346.2
Cb	3.8	345.5
3' E of Cb	2.9	346.4
E Line	2.9	346.4

425' 50

E Line	2.9	346.4
4' E of Cb	3.1	346.2
Cb	3.8	345.5
1/4	3.4	345.9
C	3.1	346.2
1/4	3.6	345.7
Cb	4.0	345.3
3' W of Cb	3.4	345.9
W Line	3.1	346.2

23

450' 50

W Line	3.6	345.7
2' W of Cb	3.6	345.7
Cb	4.1	345.2
1/4	3.7	345.16
C	3.2	346.1
1/4	3.6	345.7
Cb	3.9	345.4
3' E of Cb	3.1	346.2
E Line	3.0	346.3

475' 50

E Line	3.2	346.1
3' E of Cb	3.4	346.9
Cb	4.1	345.2
1/4	3.6	345.7
C	3.5	345.8
1/4	3.9	345.4
Cb	4.5	344.8
2' W of Cb	4.0	345.3
W Line	3.8	345.5

Campus Ave

349.26

500' S. JACK.

W Line	3.9	345.4
Cb	3.9	345.4
5' E of Cb	4.1	344.9
1/4	3.8	345.5
C	3.3	346.0
1/4	3.6	345.7
Cb	4.1	345.2
5' E of Cb	3.6	345.7
E Line	3.4	345.9

525' S.

E Line	3.7	345.6
5' E of Cb	3.7	345.6
Cb	4.5	344.8
1/4	3.5	345.8
C	3.5	345.8
1/4	3.9	345.4
Cb	4.5	344.8
2' W of Cb	4.1	345.2
W Line	4.0	345.3

24

550' S. JACK.

W Line	4.0	345.3
2' W of Cb	3.9	345.4
Cb	4.7	344.6
1/4	4.0	345.3
C	3.9	345.4
1/4	3.9	345.4
Cb	4.6	344.7
5' E of Cb	3.5	345.8
E Line	3.4	345.9

575' S.

E Line	3.7	345.6
5' E of Cb	4.3	345.0
Cb	5.0	344.3
1/4	4.2	345.1
C	4.1	345.2
1/4	4.4	344.9
2' W of Cb	4.7	344.6
Cb	5.0	344.3
W Line	4.6	344.7

Campus Avg

349.26

No line Van Buren

W Line	4.7	344.16
Cb	4.7	344.16
6' E of Cb	5.5	343.8
1/4	4.9	344.4
C	4.2	345.1
1/4	4.5	344.8
Cb	5.0	344.8
E Line	3.9	345.4

No. Cb Van

E Line	4.4	344.9
5' E of Cb	4.8	344.5
Cb	5.4	343.9
1/4	4.7	344.6
C	4.6	344.7
1/4	5.1	344.2
Cb	5.5	343.8
7' W of Cb	5.0	344.3
W Line	5.0	344.3

25

No 1/4 Van

W Line	5.2	344.1
2' W of Cb	5.3	344.0
Cb	5.7	343.6
1/4	5.3	344.0
C	4.8	344.5
1/4	5.0	344.3
Cb	5.5	343.8
E Line	4.7	344.6

Ctr Van

E Line	4.7	344.6
4' E of Cb	5.0	344.3
Cb	5.6	343.7
1/4	5.0	344.3
C	4.9	344.4
1/4	5.4	343.9
Cb	5.9	343.4
W Line	5.1	344.2

Campus Ave

349.26

So 4 Van

W Line	4.9	344.4
7' W of Cb	5.3	344.0
Cb	5.8	343.5
"4	5.5	343.8
C	5.1	344.2
"4	5.2	344.1
Cb	5.8	343.5
7' E of Cb	5.0	344.3
E Line	4.9	344.4

So Cb Van

E Line	5.0	344.3
4' E of Cb	5.4	343.9
Cb	5.9	343.4
"4	5.3	344.0
C	5.2	344.1
"4	5.7	343.6
Cb	5.8	343.5
6' W of Cb	5.4	343.9
W Line	5.4	343.9

So Line Van 13.

W Line	5.5	343.8
Cb	5.5	343.8
6' E of Cb	6.0	343.3
"4	5.9	343.4
C	5.4	343.9
"4	5.3	344.0
Cb	5.8	343.5
3' E of Cb	5.2	344.1
E Line	5.3	344.0

25 50

E Line	5.4	343.9
5' E of Cb	5.5	343.8
Cb	6.2	343.1
"4	5.3	344.0
C	5.5	343.8
"4	6.0	343.3
Cb	{ 5.7	343.6
	{ 6.4	342.9
W Line	5.3	344.0

Campus Ave

349.26
50' So Van

W Line	6.1	343.2
Cb	5.7	343.6
4'E of Cb	6.5	342.8
1/4	6.2	342.1
C	5.6	343.7
1/4	5.7	343.6
Cb	6.0	343.3
3'E of Cb	5.2	343.1
E Line	5.7	343.6

75' So Van

E Line	5.6	343.8
3'E of Cb	5.8	343.5
Cb	6.5	342.8
1/4	6.0	343.3
C	5.8	343.5
1/4	6.2	343.1
2'E of Cb	6.5	343.8
Cb	5.9	343.4
W Line	6.0	343.3

100' So Van

W Line	6.6	342.7
Cb	6.4	342.9
5'E of Cb	6.9	342.4
1/4	6.4	342.9
C	5.9	343.4
1/4	6.1	343.2
Cb	6.5	342.8
2'E of Cb	5.7	343.6
E Line	5.8	343.5

125' So Van

E Line	5.7	343.6
Cb	6.1	343.2
3' West Cb	6.4	342.9
1/4	6.9	342.4
C	6.1	343.2
C	6.0	343.3
1/4	6.8	342.5
3'E of Cb.	7.3	342.0
Cb	6.5	342.8
W Line	6.6	342.7

Campus Ave

349.26

150' So Van

W Line	6.8	342.5
Cb	6.5	342.8
7' E of Cb	7.2	342.11
1/4	7.1	342.2
C	6.0	343.0
1/4	6.3	343.0
Cb	6.8	342.5
4' E of Cb	6.0	343.9
0 Line	6.2	343.1

175' So Van

E Line	6.6	342.7
4' E of Cb	6.5	342.6
= Cb	7.3	342.8
1/4	6.7	342.6
C	6.6	342.7
1/4	7.0	342.3
4' E of Cb	7.5	341.8
Cb	6.9	342.4
W Line	7.3	342.0

28

200' So Van

W Line	7.2	342.1
Cb	{ 7.3 7.5	342.0 342.8
1/4	7.3	342.0
C	6.8	342.5
1/4	6.8	342.5
Cb	7.0	341.9
2' E of Cb	6.7	342.6
E Line	6.6	342.7
T.P.	5.70 348.66	6.90 342.36

225' So Van

E Line	5.6	342.3
3' E of Cb	5.6	342.5
Cb	6.4	341.7
1/4	5.8	342.3
C	5.7	342.4
1/4	6.3	341.8
2' E of Cb	6.7	341.4
Cb	6.2	341.9
W Line	6.2	341.9

28
Campus Ave

348.06

250' 50 Van

W Line	6.4	341.7
Cb	6.5	341.16
3'E of Cb	7.0	341.1
1/4	6.6	341.5
C	6.1	342.0
1/4	6.1	342.0
Cb	6.3	341.8
2'E of Cb	5.5	342.6
E Line	5.7	342.4

275' 50 Van

E Line	5.7	342.4
2'E of Cb	5.8	342.3
Cb	5.4	341.7
1/4	6.3	341.8
C	6.2	341.9
1/4	6.7	341.4
2'E of Cb	7.2	340.9
Cb	7.0	341.1
2'W of Cb	6.8	341.3
W Line	6.8	341.3

29

300' 50 Van

W Line	7.1	341.0
Cb	7.1	341.0
3'E	7.5	340.6
1/4	7.0	341.1
C	6.1	342.0
1/4	6.5	341.6
3'W Cb	6.5	341.6
Cb	6.3	341.8
3'E "	5.8	342.3
E Line	5.8	342.3

325' 50

E Line	5.6	342.5
3'E of Cb	5.7	342.4
Cb	6.2	341.9
1/4	6.6	341.5
C	6.1	342.0
1/4	6.6	341.5
2'E of Cb	7.5	340.6
Cb	6.9	341.2
2'E of W Line	7.1	341.0
W Line	7.5	340.6

Campus Ave.

348.06

350' S. Van

W line	7.6	340.5
3'E "	7.0	341.1
Cb	6.7	341.4
2'E of Cb	7.3	340.8
W	6.6	341.5
C	5.8	342.3
W	6.4	341.7
3'W of Cb	6.2	341.9
Cb	5.8	342.3
2'E of Cb	5.5	342.6
E line	5.5	342.6

375' S. Van

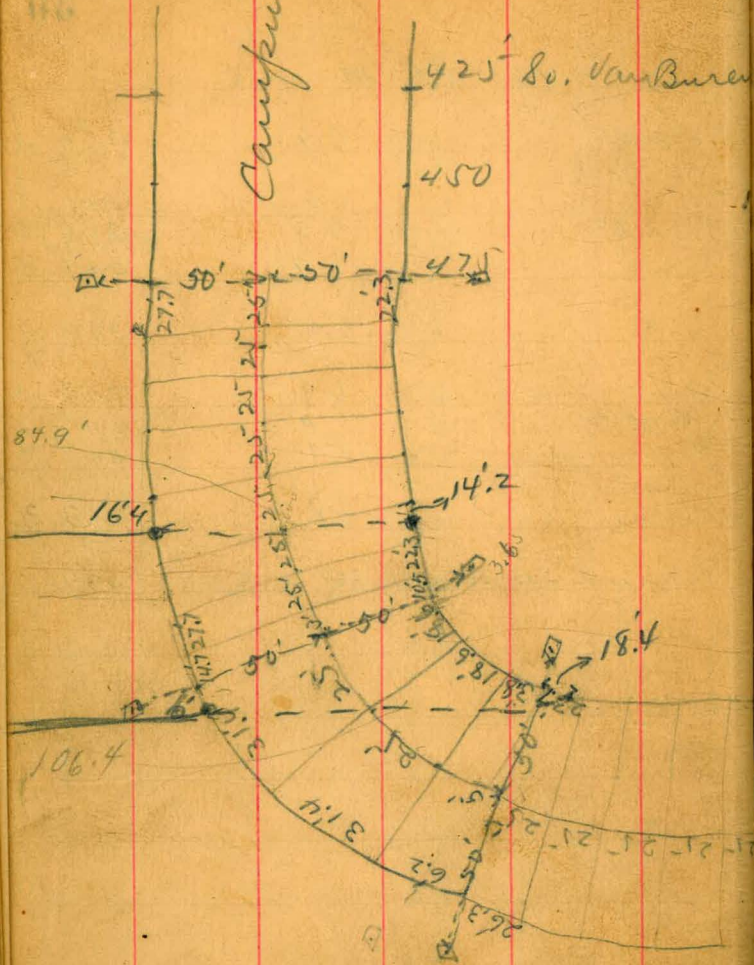
E line	5.2	342.9
2'E of Cb	5.3	342.8
Cb	6.0	342.1
W	6.2	341.9
C	5.9	342.2
W	6.7	341.4
2'E of Cb	7.4	340.7
Cb	6.8	341.8
2'E. & W. Line	7.0	341.1
W line	7.3	340.8

30

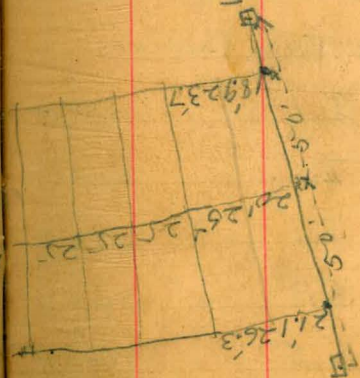
400' S. Van

W line	6.9	341.2
Cb	6.9	341.2
3'E of Cb	7.3	340.8
W	6.9	341.2
C	6.0	342.1
W	6.1	342.0
2'W of Cb	6.0	342.1
Cb	5.1	343.0
E line	4.8	343.3
T.P. Nail in fence 500' S. Van	3.68	344.38

Campus



West line University Boulevard



18
Sept. 1, 1905

H.T. 348.94

425' So. Van Buren

E. line	5.8	343.1
cb	6.6	342.3
1/4	6.9	342.0
c	6.6	342.3
1/4	7.5	341.4
cb	7.8	341.1
W. line	8.2	340.7

450' So. Van Buren

W. line	8.1	340.8
cb	7.4	341.5
1/4	7.7	341.2
c	6.3	342.6
1/4	6.5	342.4
cb	6.2	342.7
E. line	5.9	343.0

Childs
Lambert 32
Hawkins

Beginning ~~at~~ 475' So. Van Buren

E. line	5.9	343.0
cb	6.3	342.6
1/4	6.4	342.5
c	6.5	342.4
1/4	7.5	341.4
cb	7.4	341.5
W. line	7.0	341.9

Distances measured on center of curve

500' So. Van Buren

W. line	7.8	341.1
cb	7.7	341.2
1/4	7.5	341.4
c	6.5	342.4
1/4	6.4	342.5
cb	5.7	343.2
E. line	5.6	343.3

525' So. Van Buren

E. line	5.6	343.3
cb	6.0	342.9
1/4	6.5	342.4
c	6.6	342.3
1/4	7.4	341.5
cb	7.7	341.2
W. line	7.8	341.1

550' So. Van Buren

W. line	8.0	340.9
cb	7.8	341.1
1/4	7.6	341.3
c	6.7	342.2
1/4	6.6	342.3
cb	6.1	342.8
E. line	5.6	343.3

575' So. Van Buren

E. line	5.5	343.4
cb	6.2	342.7
1/4	6.6	342.3
c	6.8	342.1
1/4	7.8	341.1
cb	8.1	340.8
W. line	8.1	340.8

600' So. Van Buren

W. line	8.6	340.3
cb	8.6	340.3
1/4	7.5	341.4
c	6.8	342.1
1/4	6.5	342.4
cb	6.1	342.8
E. line	5.5	343.4

625' So. Van Buren

E. line	5.6	343.3
cb	6.0	342.9
1/4	6.7	342.2
c	6.7	342.2
1/4	7.3	341.3
cb	8.1	340.8
W. line	8.5	340.4

650' So. Van Buren

W. line	7.8	341.1
cb	8.0	340.9
1/4	7.3	341.6
c	6.6	342.3
1/4	6.6	342.3
cb	6.3	342.6
E. line	5.6	343.3

663' So. Van Buren

E. line	5.5	343.4
cb	6.4	342.5
1/4	6.5	342.4
c	6.6	342.3
1/4	7.2	341.7
cb	7.8	341.1
W. line	7.3	341.6

688' So. Van Buren

W. line	8.0	340.9
cb	7.1	341.8
1/4	6.9	342.0
c	6.3	342.6
1/4	6.2	342.7
cb	6.2	342.7
E. line	5.0	343.9

713' So. Van Buren		
E. line	4.8	344.1
cb	5.8	343.1
1/4	6.0	342.9
c	6.1	342.8
1/4	6.5	342.4
cb	6.9	342.0
W. line	8.0	340.9

718' So. Van Buren		
W. line	7.7	341.2
cb	6.9	342.0
1/4	6.5	342.4
c	5.9	343.0
1/4	6.0	342.9
cb	5.7	343.2
E. line	4.7	344.2

743' So. Van Buren		
W. line	6.7	342.2
cb	6.7	342.2
1/4	6.0	342.9
c	5.6	343.3
1/4	5.3	343.6
cb	4.8	344.1
E. line	4.5	344.4

768' So. Van Buren		
E. line	4.6	344.3
cb	4.6	344.3
1/4	5.0	343.9
c	5.0	343.9
1/4	5.7	343.2
cb	6.4	342.5
W. line	6.3	342.6

793' So. Van Buren

W. line	5.9	343.0
cb	6.1	342.8
1/4	5.4	343.5
c	4.6	344.3
1/4	4.8	344.1
cb	4.8	344.1
E. line	4.3	344.6

818' So. Van Buren

E. line	4.2	344.7
cb	5.0	343.9
1/4	4.8	344.1
c	4.3	344.6
1/4	5.1	343.8
cb	5.8	343.1
W. line	5.9	343.0

843' So. Van Buren

W. line	5.3	343.6
cb	5.4	343.5
1/4	4.7	344.2
c	4.3	344.6
1/4	4.3	344.6
cb	4.7	344.2
E. line	4.1	344.8

868' So. Van Buren

E. line	3.6	345.3
cb	4.3	344.6
1/4	4.0	344.9
c	4.2	344.7
1/4	4.7	344.2
cb	5.2	343.7
W. line	5.0	343.9

893' So. Van Buren

W. line	4.7	344.2
cb	5.2	343.7
1/4	4.7	344.2
C	4.1	344.8
1/4	4.1	344.8
cb	4.3	344.6
E. line	3.8	345.1

918' So. Van Buren

E. line	3.6	345.3
cb	4.4	344.5
1/4	4.2	344.7
C	4.2	344.7
1/4	4.4	344.5
cb	5.2	343.7
W. line	4.9	344.0

943' So. Van Buren

W. line	4.9	344.0
cb	5.2	343.7
1/4	5.0	343.9
C	4.5	344.4
1/4	4.2	344.7
cb	4.4	344.5
E. line	3.9	345.0

West line University Boulevard

W. line	4.2	344.7
cb	4.2	344.7
1/4	4.2	344.7
C	4.5	344.4
1/4	4.9	344.0
cb	5.1	343.8
E. line	5.2	343.7

H.I. 349.14

West Eb. University Boulevard

S. line	5.2	343.9
cb	5.7	343.4
1/4	5.1	344.0
C	4.7	344.4
1/4	4.6	344.5
cb	4.7	344.4
N. line	4.8	344.3

West 1/4

S. line	5.5	344.6
cb	5.1	344.0
1/4	4.8	344.3
C	4.7	344.4
1/4	4.7	344.4
cb	4.5	344.6
N. line	4.8	344.3

38

Center U. Boulevard

N. line	4.3	344.8
cb	4.4	344.7
1/4	4.6	344.5
C	4.9	344.2
1/4	5.1	344.0
cb	5.2	343.9
S. line	5.4	343.7

East 1/4

S. line	5.6	343.5
cb	5.4	343.7
1/4	5.1	344.0
C	4.9	344.2
1/4	4.8	344.3
cb	4.7	344.4
N. line	4.6	344.5

East cb.

n. line	5.0	344.1
cb	5.2	343.9
1/4	5.8	343.3
c	5.8	343.3
1/4	6.2	342.9
cb	6.3	342.8
s. line	5.8	343.3

East line U. Boulevard

s. line	4.3	344.8
cb	4.6	344.5
1/4	5.5	343.6
c	5.0	344.1
1/4	5.1	344.0
cb	4.9	344.2
n. line	4.6	344.5

25' E. U. Boulevard

n. line	4.7	344.4
cb	5.0	344.1
1/4	5.4	343.7
c	4.8	344.3
1/4	5.5	343.6
cb	5.1	344.0
s. line	4.0	345.1

50' E. U. Boulevard

s. line	4.3	344.8
cb	4.6	344.5
1/4	5.5	343.6
c	4.8	344.3
1/4	5.0	344.1
cb	4.9	344.2
n. line	4.9	344.2

	75' E.	U. Boulevard	
N. line	5.3	343.8	
cb	5.0	344.1	
1/4	5.5	343.6	
c	4.9	344.2	
1/4	5.6	343.5	
cb	4.2	344.9	
S. line	4.4	344.7	

	100' E.	U. Boulevard	
S. line	4.7	344.4	
cb	4.9	344.2	
1/4	5.8	343.3	
c	5.0	344.1	
1/4	5.4	343.7	
cb	5.1	344.0	
N. line	5.3	343.8	

	125' E.	U. Boulevard	
N. line	5.3	343.8	
cb	5.2	343.9	
1/4	5.6	343.5	
c	5.0	344.1	
1/4	5.8	343.3	
cb	5.2	343.9	
S. line	4.9	344.2	

	140' E.	U. Boulevard	
S. line	5.4	343.7	
cb	5.5	343.6	
1/4	6.0	343.1	
c	5.1	344.0	
1/4	5.7	343.4	
cb	5.3	343.8	
N. line	5.2	343.9	

160' E. W. Boulevard

N. line	5.2	343.9
cb	5.6	343.6
1/4	5.7	343.4
c	5.3	343.8
1/4	6.1	343.0
cb	6.1	343.0
S. line	6.2	342.9

175' E. W. Boulevard

S. line	6.1	343.0
cb	6.0	343.1
1/4	6.3	342.8
c	5.4	343.7
1/4	5.8	343.3
cb	5.5	343.6
N.	5.4	343.7

200' E. W. Boulevard

N. line	5.5	343.6
cb	5.8	343.3
1/4	6.0	343.1
c	5.7	343.4
1/4	6.3	342.8
cb	6.1	343.0
S. line	6.4	342.7

225' E. W. Boulevard

S. line	6.5	342.6
cb	6.4	342.7
1/4	6.4	342.7
c	6.1	343.0
1/4	6.6	342.5
cb	5.9	343.2
N. line	5.7	343.4

250' E. N. Boulevard

n. line	6.2	342.9
cb	6.1	343.0
1/4	6.7	342.4
c	6.2	342.9
1/4	6.8	342.9
cb	6.4	342.7
S. line	6.6	342.5

268.5' E. N. Boulevard

S. line	6.6	342.5
cb	6.6	342.5
1/4	7.1	342.0
c	6.7	342.4
1/4	6.7	342.4
cb	6.6	342.5
n. line	6.9	342.2

300' West line Park Boulevard

n. line	6.9	342.2
cb	6.8	342.3
1/4	7.1	342.0
c	7.1	342.0
1/4	7.3	341.8
cb	6.6	342.5
S. line	7.3	342.8

Sept. 2. 1905

H.I. 324.21 Georgia
South line El Cajon av.

W. line	10.2	314.0
cb	9.8	314.4
1/4	10.5	313.7
c	11.2	313.0
1/4	11.5	314.7
cb	11.7	314.5
E. line	12.3	311.9
So. cb.		
E. line	13.3	310.9
cb	12.7	310.5
1/4	14.1	310.1
c	14.2	310.0
1/4	13.4	310.8
cb	11.9	312.3
W. line	11.2	313.0

Sheet 20' sidewalk

So. 1/4

W. line	8.1	316.11
cb	8.5	315.7
1/4	8.9	315.3
c	9.1	315.11
1/4	8.3	315.9
cb	10.5	313.7
E. line	13.7	310.5
Center		
E. line	10.7	313.5
cb	8.7	315.5
1/4	8.6	316.6
c	8.2	316.0
1/4	7.7	316.5
cb	7.1	317.1
W. line	6.6	317.6

Builds
Lambert 43
Hawkins

North 1/4

W. line	4.3	319.9
cb	5.4	318.8
1/4	5.9	318.3
c	6.5	317.7
1/4	6.9	317.3
cb	7.6	316.6
E. line	8.5	315.7

North cb.

E. line	8.7	315.5
cb	8.0	316.2
1/4	7.3	316.9
c	7.0	317.2
1/4	6.4	317.8
cb	5.0	319.2
W. line	4.6	319.6

North line El Cajon

W. line	4.0	320.2
cb	4.2	320.0
1/4	4.7	319.5
c	5.7	318.5
1/4	6.1	318.1
cb	6.5	317.7
E. line	7.0	317.2

25' North El Cajon

E. line	6.3	317.9
cb	5.2	319.0
1/4	4.8	319.4
c	4.6	319.6
1/4	4.2	320.0
cb	3.6	320.6
W. line	3.1	321.1

50' N. El Cajon

u. W. line	2.7	321.5
cb	3.3	320.9
1/4	3.0	321.2
c	3.1	321.1
1/4	3.3	320.9
cb	4.0	320.2
E. line	5.1	319.1

75' N. El Cajon

E. line	3.5	320.7
cb	3.2	321.0
1/4	2.2	322.0
c	2.7	321.5
1/4	2.8	321.4
cb	2.2	322.0
W. line	1.7	322.5

100' N. El Cajon

W. line	-0.2	324.4
cb	1.9	322.3
1/4	2.1	322.1
c	2.4	321.8
1/4	2.7	321.5
cb	2.5	321.7
E. line	2.7	321.5

H.T. 335.42

125' N. El Cajon

E. line	12.7	322.7
cb	12.6	322.8
1/4	11.9	323.5
c	10.8	324.6
1/4	11.6	323.8
cb	11.0	324.4
W. line	9.2	326.2

140' N. El Cajon

W. line	7.6	327.8
cb	10.4	325.0
1/4	10.1	325.3
c	9.7	325.7
1/4	10.0	325.4
cb	11.3	324.1
E. line	11.2	324.2

150' N. El Cajon

E. line	10.0	325.4
cb	10.6	324.8
1/4	9.7	325.7
c	8.7	326.7
1/4	9.3	326.1
cb	8.9	326.5
W. line	5.7	329.7

175' N. El Cajon

W. line	2.5	332.9
cb	5.3	330.1
1/4	6.4	329.0
c	5.9	329.5
1/4	6.8	328.2
cb	7.7	327.7
E. line	7.8	327.6

200' N. El Cajon

E. line	5.3	330.1
cb	5.1	330.3
1/4	3.3	333.1
c	2.5	332.9
1/4	2.6	332.8
cb	1.4	334.0
W. line	-0.4	335.8

ob
H.I. 344,41

225' N. El Cajon

W. line	5.2	339.2
cb	6.4	338.0
1/4	7.3	337.1
C	7.8	336.6
1/4	9.9	334.5
cb	10.5	333.9
E. line	11.2	333.2

250' N. El Cajon

E. line	8.4	336.0
cb	7.0	337.4
1/4	6.0	338.4
C	5.3	339.1
1/4	4.8	339.6
cb	4.5	339.9
W. line	3.5	340.9

47

275' N. El Cajon

W. line	3.3	341.1
cb	3.3	341.1
1/4	3.7	340.7
C	4.1	340.3
1/4	4.4	340.0
cb	5.1	339.3
E. line	6.4	348.0

300' N. El Cajon

E. line	5.0	339.4
cb	3.9	340.5
1/4	3.4	341.0
C	2.9	341.5
1/4	2.6	341.8
cb	2.6	341.8
W. line	2.2	342.2

325' N. Elcaym

u	w. line	1.8	342.6
	cb	2.1	342.3
	1/4	2.6	341.8
	c	2.7	341.7
	1/4	2.1	341.3
	cb	2.4	341.0
E	E. line	3.7	340.7

350' N. Elcaym

E	E. line	2.7	341.7
	cb	2.2	341.1
	1/4	1.8	341.6
	c	1.7	341.7
	1/4	1.7	341.7
	cb	1.4	343.0
	w. line	1.3	343.1

H.I. 349.27

375' N. Elcaym

	w. line	5.9	343.4
	cb	6.4	342.9
	1/4	6.4	342.9
	c	6.4	342.9
	1/4	6.0	343.3
	cb	6.6	342.7
E	E. line	7.2	342.1

400' N. Elcaym

	E. line	6.9	342.4
	cb	6.5	342.8
	1/4	6.1	343.2
	c	5.8	343.5
	1/4	5.9	343.4
	cb	5.7	343.6
	w. line	5.7	344.6

425' N. Elcayun

W. line	5.6	343.7
cb	5.7	343.6
1/4	5.9	343.4
c	5.9	343.4
1/4	5.7	343.6
cb	5.6	343.7
E line	6.4	342.9

450' N. Elcayun

E line	6.5	342.8
cb	5.6	343.7
1/4	4.8	344.5
c	5.2	344.1
1/4	5.4	343.9
cb	5.5	343.8
W. line	5.4	343.9

475' N. Elcayun

W. line	5.0	344.3
cb	5.3	344.0
1/4	5.4	343.9
c	5.6	343.7
1/4	5.6	343.7
cb	5.6	343.7
E line	6.2	343.1

500' N. Elcayun

E line	5.8	343.5
cb	5.8	343.5
1/4	4.1	345.2
c	4.0	345.3
1/4	4.5	344.8
cb	4.9	344.4
W. line	4.9	344.4

525' N. Elcapon

u	w. line	4.9	344.4
	cb	4.8	344.5
	1/4	5.2	344.1
	c	5.4	343.9
	1/4	5.4	343.9
	cb	5.1	344.2
E	E. line	5.6	343.7

550' N. Elcapon

E	E. line	5.6	343.7
	cb	5.6	343.7
	1/4	5.3	344.0
	c	5.2	344.1
	1/4	4.7	344.6
	cb	4.8	344.5
	w. line	4.8	344.5

575' N. Elcapon

	w. line	4.9	344.4
	cb	4.8	344.5
	1/4	4.7	344.6
	c	4.8	344.5
	1/4	4.0	345.3
	cb	4.7	344.6
	E. line	5.4	343.9

South line Jackson

	E. line	5.5	343.8
	cb	5.3	344.0
	1/4	5.2	344.1
	c	4.9	344.4
	1/4	4.7	344.6
	cb	4.6	344.7
	w. line	4.84	344.43

N.I. 350.38

So. cb.

W. line	5.6	344.8
cb	5.7	344.7
1/4	5.7	344.7
C	6.0	344.4
1/4	6.0	344.4
cb	5.8	344.6
E. line	6.3	344.1
So. 1/4		
E. line	6.8	343.6
cb	6.4	344.0
1/4	6.2	344.2
C	6.2	344.2
1/4	6.0	344.4
cb	6.0	344.4
W. line	5.9	344.5

51

Center

W. line	5.5	344.9
cb	5.6	344.8
1/4	5.8	344.6
C	5.8	344.6
1/4	5.9	344.5
cb	6.1	344.3
E. line	6.3	344.1
N. 1/4		
E. line	6.9	343.5
cb	6.5	343.9
1/4	6.4	344.0
C	6.3	344.1
1/4	6.2	344.2
cb	6.2	344.2
W. line	6.0	344.4

North cb.

u	w. line	4.3	346.1
	cb	4.3	346.1
	1/4	5.6	344.8
	c	6.2	344.2
	1/4	6.3	344.1
	cb	6.3	344.1
8	E. line	5.8	344.6

North line Jackson

8	E. line	4.7	345.7
	cb	5.7	344.7
	1/4	6.0	344.4
	c	6.0	344.4
	1/4	5.9	344.5
	cb	5.1	345.3
	w. line	4.9	344.5

25' N. Jackson

	w. line	5.7	344.7
	cb	5.2	345.2
	1/4	4.7	345.7
	c	4.8	345.6
	1/4	5.5	344.9
	cb	5.5	344.9
	E. line	5.9	344.5

50' N. Jackson

	E. line	6.0	344.4
	cb	5.7	344.7
	1/4	5.7	344.7
	c	5.6	344.8
	1/4	5.5	344.9
	cb	5.4	345.0
	w. line	5.5	344.9

75' N. Jackson

W. line	5.3	345.1
cb	4.2	346.2
1/4	4.3	346.1
c	5.1	345.3
1/4	5.6	344.8
cb	5.5	344.9
E. line	5.6	344.8

100' N. Jackson

E. line	4.0	346.4
cb	5.4	345.0
1/4	5.4	345.0
c	5.1	345.3
1/4	4.3	346.1
cb	4.8	345.6
W. line	5.2	345.2

125' N. Jackson

W. line	5.1	345.3
cb	5.1	345.3
1/4	5.0	345.4
c	5.1	345.3
1/4	5.0	345.4
cb	5.1	345.3
E. line	5.0	345.4

149.6 N. Jackson

E. line	5.1	345.3
cb	4.9	345.5
1/4	4.4	346.0
c	4.2	346.2
1/4	4.7	345.7
cb	4.3	346.1
W. line	4.7	345.7

So. line Mission ave.

W. line	4.7	345.7
cb	3.1	347.3
1/4	4.4	346.0
C	5.0	345.4
1/4	4.9	345.5
cb	4.8	345.6
E. line	4.9	345.5
So. cb.		
E. line	4.9	345.5
cb	4.1	346.3
1/4	4.4	346.0
C	4.7	345.7
1/4	4.7	345.7
cb	4.8	345.6
W. line	4.7	345.7

So. 1/4

W. line	4.7	345.7
cb	4.3	346.1
1/4	4.4	346.0
C	4.1	346.3
1/4	4.3	346.1
cb	4.2	346.2
E. line	4.1	346.3
Center		
E. line	3.9	346.5
cb	3.9	346.5
1/4	3.9	346.5
C	4.0	346.0
1/4	3.9	346.5
cb	4.0	346.4
W. line	4.0	346.4

North 1/4

W. line	4.4	346.0
cb	3.8	346.6
1/4	4.2	346.2
c	4.2	346.2
1/4	3.9	346.5
cb	4.0	346.4
E. line	4.0	346.4

North cb,

E. line	4.4	346.0
cb	3.8	346.6
1/4	3.3	347.1
c	3.4	347.0
1/4	4.2	346.2
cb	4.4	346.0
W. line	4.5	345.9

North line mission ave.

W. line	4.6	345.8
cb	4.4	346.0
1/4	4.3	346.1
c	4.4	346.0
1/4	4.3	346.1
cb	4.4	346.0
E. line	4.4	346.0

346' N. Jackson

E. line	4.4	346.0
cb	4.5	345.9
1/4	4.4	346.0
c	4.3	346.1
1/4	4.3	346.1
cb	4.4	346.0
W. line	4.4	346.0

375' n. Jackson

w. line	2.1	348.3
cb	3.6	346.8
1/4	4.4	346.0
c	4.3	346.1
1/4	3.0	347.4
cb	2.3	348.1
e. line	3.9	346.5

H.I. 352,53

400' n. Jackson

e. line	5.6	346.9
cb	6.5	346.0
1/4	6.5	346.0
c	6.6	345.9
1/4	6.5	346.0
cb	6.5	346.0
w. line	6.6	345.9

H.I. 352,53

56

425' n. Jackson

w. line	6.3	346.2
cb	5.4	347.1
1/4	4.3	348.2
c	4.7	347.8
1/4	5.2	347.3
cb	6.3	346.2
e. line	6.5	346.0

450' n. Jackson

e. line	5.0	347.5
cb	6.2	346.3
1/4	6.4	346.1
c	6.3	346.2
1/4	6.3	346.2
cb	6.4	346.1
w. line	4.2	348.3

475' N. Jackson

W. line	6.5	346.0
cb	6.3	346.2
1/4	6.3	346.2
C	6.1	346.4
1/4	6.2	346.3
cb	5.8	346.7
E. line	5.3	347.2

500' N. Jackson

E. line	5.0	347.5
cb	5.4	347.1
1/4	5.1	347.4
C	4.3	348.2
1/4	4.5	348.0
cb	5.6	346.9
W. line	5.8	346.7

525' N. Jackson

W. line	5.2	347.3
cb	4.7	347.8
1/4	3.9	348.6
C	4.0	348.5
1/4	5.4	347.1
cb	5.7	346.8
E. line	4.9	347.6

550' N. Jackson

E. line	4.5	348.0
cb	3.5	347.0
1/4	5.6	346.9
C	5.3	347.2
1/4	5.0	347.5
cb	5.0	347.5
W. line	5.2	347.3

575¹ N. Jackson

W. line	5.5	347.0
cb	5.6	346.9
1/4	5.6	346.9
C	5.4	347.1
1/4	5.4	347.1
cb	5.5	347.0
E. line	5.1	347.4

South line Marcel

E. line	5.5	347.0
cb	4.1	348.4
1/4	3.1	349.4
C	3.8	348.7
1/4	5.0	347.5
cb	5.3	347.2
W. line	4.8	347.7

58

So. cb.

W. line	5.4	347.1
cb	5.4	347.1
1/4	4.6	347.9
C	3.4	349.1
1/4	3.3	349.2
cb	4.4	348.1
E. line	5.4	347.1

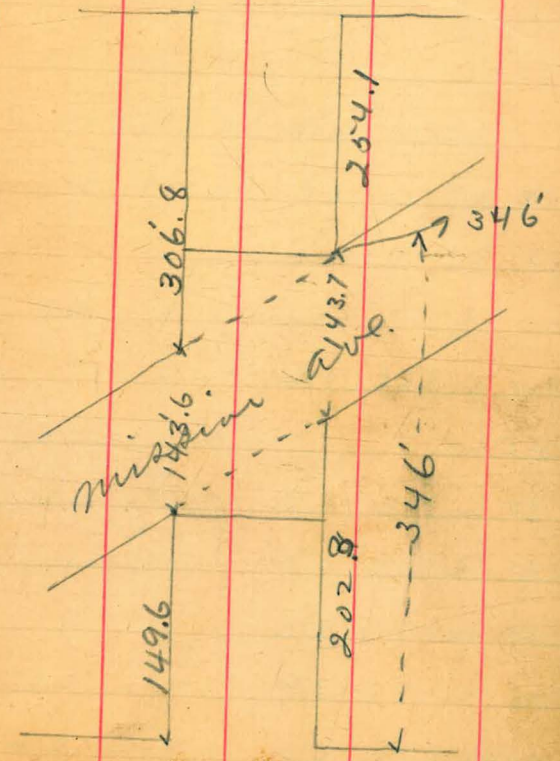
So. 1/4

E. line	5.4	347.1
cb	5.5	347.0
1/4	5.5	347.0
C	5.3	347.2
1/4	5.3	347.2
cb	5.4	347.1
W. line	5.3	347.2

Center Monroe

Wilina	4.8	347.7
cb	4.7	347.8
1/4	4.8	347.7
c	4.8	347.7
1/4	5.0	347.5
cb	5.0	347.5
E. line	5.1	347.4

Monroe



Jackson

MADISON AVE

COVERT
BROOKES
MOORE

BOUNDARY - ARIZONA

12/13/05

6.30	391.99		385.69
3.25	393.34	1.90	390.04
			390.09

390.04
390.09

56.5 EAST OF W.L. ILLINOIS = W.L. BOUNDARY

33.7 " " " " = " "

15 " " " "

0 = W.L. ILLINOIS

+50

+80

+10

+10

+25

+50

+75

+85

+20

+50

340 = E.L. OHIO

N.L

S.L

60

N.W. ILLINOIS & MONROE.

Δ WHITE STAKE AT S.W. MADISON & ILLINOIS

3.6 389.7

2.6 390.7

4.3 389.0

4.1 389.2 4.5 388.8

4.1 389.2 4.5 388.8

4.5 388.8

4.4 388.9 3.5 389.8

4.8 388.5

3.0 390.3

4.4 388.9 4.7 388.6

4.5 388.8

3.8 389.5

4.2 389.1 4.8 388.5

4.0 389.3 4.7 388.6

4.4 388.9 4.7 388.6

MADISON AVE.

393.34

+10

+20

+30

+40 = C.L. OHIO

+60

+80 = O-W.L. OHIO

4.04 389.30

+10

+25

+50

+75

+10

+05

+15

+40

+50

N.L.

S.L

61

4.5 388.8

3.4 389.9

3.7 389.6

4.0 389.3 4.3 389.0

4.7 388.6

4.0 389.3 4.8 388.5

N.W. OHIO & MADISON ON HUB

3.6 389.7

4.7 388.6

3.1 390.2 5.3 388.0

5.0 388.3

4.8 388.5

5.1 388.2 4.4 388.9

4.9 388.4

4.0 389.3

6.7 386.6

5.7 387.6 6.2 387.1

MADISON ST.

393.34

+55
+70
+85
2+0
+10
+15
+35
+40
+50
+60
+75
3+0
+10
+30
+40
+55
+70

E.L. 30TH ST.

C.L. 30TH ST.

N.L.

S.L.

62

		5.9	387.4
5.7	387.6	6.8	386.5
4.2	389.1	5.4	387.9
5.0	388.3	7.3	386.0
6.6	386.7		
		7.3	386.0
		6.5	386.8
4.9	388.4		
5.7	387.6	7.9	385.4
7.7	385.6		
6.8	386.5		
7.1	386.2	8.6	384.7
6.5	386.8	7.5	385.8
		9.2	384.1
8.8	384.5	9.4	383.9
6.7	386.6		
		10.0	383.3

50

MADISON AVE

393.34

0 = W.L. 30TH

1.04 385.09 9.29 384.05

+10

+25

+45

+50

+70

+80

+95

+110

+20

+40

+45

+50

+75

+85

+20

N.L. N.L.

S.L.

63

8.8 384.5

H.W. 30TH & MADISON ON HUB.

0.0 385.1

1.6 383.5

0.8 384.3

2.0 383.1

1.6 383.5

2.0 383.1

1.2 383.9

2.7 382.4

0.7 384.4

3.2 381.9

1.1 384.0

3.9 381.2

1.6 383.5

3.4 381.7

2.7 382.4

3.0 382.1

4.3 380.8

4.9 380.2

3.4 381.7

3.0 382.1

5.1 380.0

MADISON

385.09

+10
+20
+30
+50
+60
+70
+85
340 = E.L. KANSAS
+15
+40 = C.L. KANSAS
+50
+60
+75
+80 = O = W.L. KANSAS
+50
+65
+85

N

N.L

5.7 379.4
5.4 379.7
6.6 378.5
4.3 380.8
4.3 380.8
6.7 378.4
7.5 377.6
7.4 377.7
6.7 378.4
7.2 377.9
7.6 377.5

S.L

4.8 380.3
5.9 379.2
4.0 381.1
6.3 378.8
6.1 379.0
6.7 378.4
6.0 379.1
7.8 377.3
8.2 376.9
7.6 377.5
8.2 376.9
8.7 376.4
6.6 378.5
8.1 377.0

64

MADISON AVE.

385.09

1+0				
+15				
+25				
+50				
+70				
+85				
2+0				
+30				
+40				
+50				
+55				
+75				
3+0	= E.L. UTAH			
	6.71	383.38	8.42	376.67
+30				
+40				
+50				

376.67
376.64
03

N.L.

S.L.

8.0	377.1	8.1	377.0
		8.4	376.7
		6.7	378.4
7.8	377.3	6.4	378.7
		6.4	378.7
7.5	377.6	8.1	377.0
6.2	378.9	8.3	376.8
7.8	377.3		
7.8	377.3	8.3	376.8
7.0	378.1	7.1	378.0
6.4	378.7	6.5	378.6
7.6	377.5	8.3	376.8
7.6	377.5		
S.E. UTAH	8 MADISON	ON HUB	
		6.6	376.8
5.6	377.8	5.7	377.7
5.9	377.5		

MADISON AVE.

383.38

+65

+70

W. L. UTAH = 0

+15

+40

+50

+60

+65

+75

+90

+10

+10

+25

+50

+65

+75

+20

N.L

S.L

66

6.5 376.9

3.5 379.9

3.8 379.6 5.3 378.1

5.8 377.6 6.4 377.0

4.8 378.6 6.4 377.0

5.6 377.8 5.0 378.4

6.0 377.4

6.1 377.3

5.2 378.2

6.0 377.4 5.1 378.3

5.0 378.4 6.2 377.2

4.1 379.3

5.8 377.6

5.8 377.6 6.2 377.2

6.3 377.1

4.1 379.3 4.9 378.5

5.8 377.6 6.1 377.3

MADISON AVE.

38338

+50

+60

+75

3+0 E.L. IDAHO

+15

+17

+24

+25

+40 C.L. IDAHO

+54

+55

+60

0 = W.L. IDAHO

5.84 377.54

+15

+50

+75

67

N.L.

S.L.

5.4 378.0 6.1 377.3

4.4 379.0

5.4 378.0 4.4 379.0

5.6 377.8 6.0 377.4

4.5 378.9

5.1 378.3

5.2 378.2 5.8 377.6

5.7 377.7 6.5 376.9

4.8 378.6 5.6 377.8

5.7 377.7 6.6 376.8

5.4 378.0

6.1 377.3

4.5 378.9 5.4 378.0

S.E. IDAHO & MADISON ON PHONE POLE

5.2 378.2

4.8 378.6 5.1 378.3

5.3 378.1

MADISON AVE.

382.38

+70				
+10				
+25				
+35				
+50				
+60				
+65				
+75				
+80				
2+0				
+10				
+30				
+50				
+85				
3+0	E. L.	OREGON		
	3.35	382.77	2.96	380.42
+24				

	N.L		S.L	
	3.5	379.9		
	4.8	378.6	3.6	379.8
	2.9	380.6		
	3.4	380.0	4.3	379.1
	2.1	381.3	3.0	380.4
			2.5	380.9
	3.2	380.2		
			3.7	379.7
	2.0	381.4		
	3.6	379.8	3.6	379.8
			3.7	379.7
	2.7	380.7	1.7	381.7
	2.8	380.6	3.3	380.1
	2.3	381.1	3.0	380.4
	2.9	380.5	2.3	381.1
	N.E	OREGON & MADISON ON HUB		
	3.1	380.7	2.8	381.0

MADISON AVE

383.77

+25
 +40 C.L. OREGON
 +55
 0 = W.L. OREGON
 25
 +45
 +50
 +60
 +65
 +90
 1+0
 +10
 +25
 +50
 +75
 2+0
 +20

N.L

S.L

69

		3.6	380.2
2.2	381.6	2.4	381.4
3.1	380.7	3.4	380.4
3.2	380.6	3.4	380.4
		3.4	380.4
		2.0	381.8
3.3	380.5	2.7	381.1
		3.8	380.0
1.4	382.4		
3.3	380.5	2.1	381.7
2.3	381.5	3.6	380.2
		3.9	379.9
3.6	380.2	2.7	381.1
3.9	379.9	4.1	379.7
		4.3	379.5
4.3	379.5	3.0	380.8
		4.8	379.0

MADISON AVE.

382.77

+30

+40

+50

+60

+80

+85

+90

+100 = E. L. CALIF

+15

+20

+21

+40 C. L. CALIF

+55

+56

+60

W. L. CALIF

4.41 378.36

N. L

S. L

70

4.4 379.4

3.4 380.4 4.1 379.7

3.9 379.9 5.0 378.8

4.7 379.1

4.9 378.9 5.5 378.3

4.6 379.2

4.3 379.5

5.1 378.7 5.5 378.3

5.4 378.4

4.4 379.4 5.0 378.8

5.4 378.4

4.4 379.4 6.3 377.5

5.5 378.3

5.0 378.8

6.2 377.6

5.5 378.3 4.4 379.4

S. W. CALIF & MADISON ON HUB

MADISON AVE

382.77

+25
 +30
 +50
 +65
 +75
 +90
 +10
 +10
 +35
 +50
 2+0
 +10
 +25
 +30
 +35
 +50
 +60

N.L

S.L

71

		7.4	376.4
6.2	377.6		
4.7	379.1	7.2	376.6
5.1	376.7		
6.5	377.3		
7.3	376.5		
6.7	377.1	7.6	376.2
6.0	377.8		
8.4	375.4		
8.4	375.4	9.1	374.7
9.3	374.5	9.7	374.1
9.8	374.0		
		10.3	373.5
8.3	375.5		
		9.3	374.5
10.3	373.5	11.0	372.8
11.3	372.5		

MADISON AVE.

382.77

+70

+75

340 = E. L. ARIZONA

0.26 371.48 12.55 371.22

1.32 370.16

1.05 361.49 11.04 360.44

3.87 357.62

357.65
357.62
1.23

N. L

S. L

13.0 370.8

10.5 373.3

13.4 370.4 13.6 370.2

S. E. ARIZONA & MADISON ON HUB.

N. E. ARIZONA & MONROE ON HUB

57

73

67

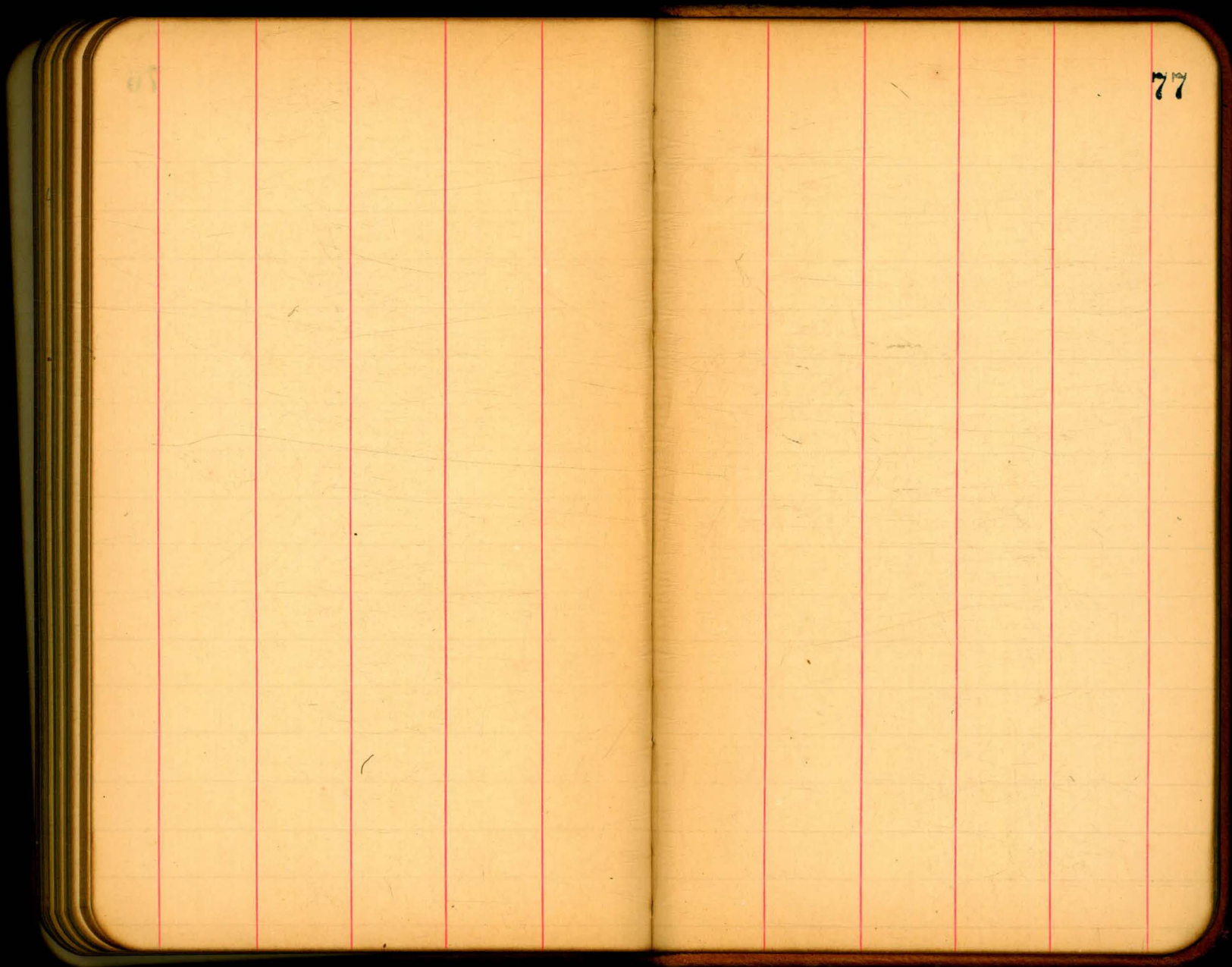
74

74

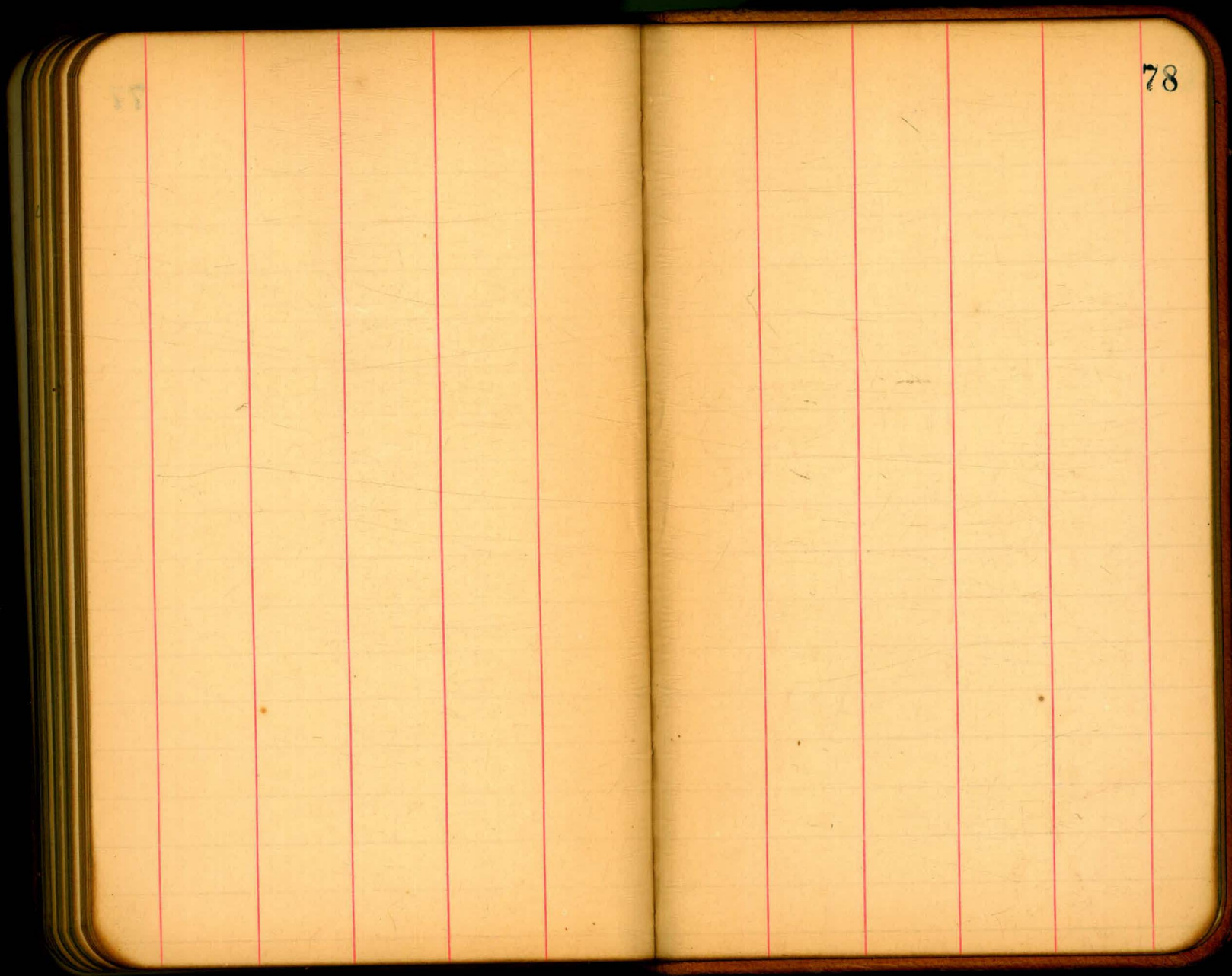
75

65

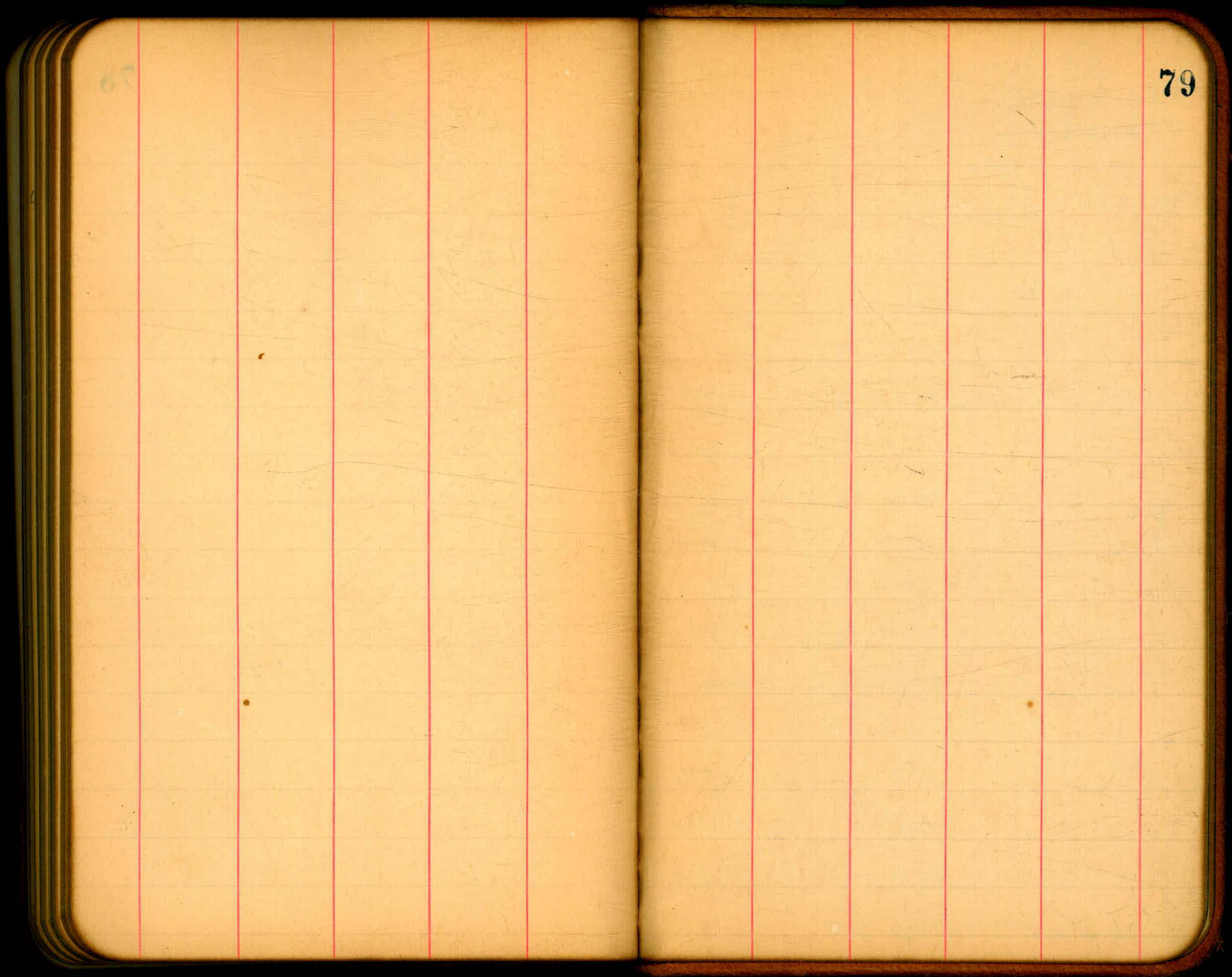
76



77



78



68

79

El Cajon Wood Pipe
 from 30th St to Ohio Corner
 with Ohio St main.

	H. 1			
R.M. 204	<u>369.36</u>		367.32	
		9.81	<u>359.50</u>	
		6.22	363.14	
			<u>361.14</u>	
12+95.4 West on 93 rd 47		264.6	<u>359.50</u>	5.1
13			<u>359.08</u>	
+50		3.88	365.48	6.3
+75			<u>359.00</u>	
14		5.44	363.92	4.8
+50		5.14	364.22	4.7
15		5.54	363.82	4.0
+50		5.56	363.90	3.7
16		5.14	364.22	3.8
+50		6.22	363.16	4.4
17		4.93	364.43	3.3
+24 Connection of wood pipe to			<u>361.23</u>	
Ohio St wood pipe line				

6114
 595
 4286
 1285
 35420

1722
 12+95.4
 428.6
 4296
 17.144
 395
 6721
 40.56
 16184
 595
 21.12

20

1722
 18475
 349
 2210.63
 2094
 1100

349
 166
 1396
 2094
 22336

357
 223

325
 223
 975
 640
 650
 2475

32

325
 624
 1300
 1950
 20800

2.70
345.56

TRAVERSE TABLE FOR TRANSIT BOOK.

From 1° to 90° for a distance of 100.

Degrees.	DEGREES.		¼ DEGREE.		½ DEGREE.		¾ DEGREE.		Degrees.
	Lat.	Dep.	Lat.	Dep.	Lat.	Dep.	Lat.	Dep.	
0			100.00	0.44	100.00	0.87	99.99	1.31	89
1	99.98	1.75	99.98	2.18	99.97	2.62	99.95	3.05	88
2	99.94	3.49	99.92	3.93	99.91	4.36	99.88	4.80	87
3	99.86	5.23	99.84	5.67	99.81	6.10	99.79	6.54	86
4	99.76	6.98	99.73	7.41	99.69	7.85	99.66	8.28	85
5	99.62	8.72	99.58	9.15	99.54	9.58	99.50	10.02	84
6	99.45	10.45	99.41	10.89	99.36	11.32	99.31	11.75	83
7	99.25	12.19	99.20	12.62	99.14	13.05	99.09	13.49	82
8	99.03	13.92	98.97	14.35	98.80	14.78	98.84	15.21	81
9	98.77	15.64	98.70	16.07	98.63	16.50	98.56	16.93	80
10	98.48	17.36	98.40	17.79	98.33	18.22	98.25	18.65	79
11	98.16	19.08	98.08	19.51	97.99	19.94	97.90	20.36	78
12	97.81	20.79	97.72	21.22	97.63	21.64	97.53	22.07	77
13	97.44	22.50	97.34	22.92	97.24	23.34	97.13	23.77	76
14	97.03	24.19	96.92	24.62	96.81	25.04	96.70	25.46	75
15	96.59	25.88	96.48	26.30	96.36	26.72	96.25	27.14	74
16	96.13	27.56	96.00	27.98	95.88	28.40	95.76	28.82	73
17	95.63	29.24	95.50	29.65	95.37	30.07	95.24	30.49	72
18	95.11	30.90	94.97	31.32	94.83	31.73	94.69	32.14	71
19	94.55	32.56	94.41	32.97	94.26	33.38	94.12	33.79	70
20	93.97	34.20	93.82	34.61	93.67	35.02	93.51	35.43	69
21	93.36	35.84	93.20	36.24	93.04	36.65	92.88	37.06	68
22	92.72	37.46	92.55	37.86	92.39	38.27	92.22	38.67	67
23	92.05	39.07	91.88	39.47	91.71	39.87	91.53	40.27	66
24	91.35	40.67	91.18	41.07	91.00	41.47	90.81	41.87	65
25	90.63	42.26	90.45	42.66	90.26	43.05	90.07	43.44	64
26	89.88	43.84	89.69	44.23	89.49	44.62	89.30	45.01	63
27	89.10	45.40	88.90	45.79	88.70	46.17	88.50	46.56	62
28	88.29	46.95	88.09	47.33	87.88	47.72	87.67	48.10	61
29	87.46	48.48	87.25	48.86	87.04	49.24	86.82	49.62	60
30	86.60	50.00	86.38	50.38	86.16	50.75	85.94	51.13	59
31	85.72	51.50	85.49	51.88	85.26	52.25	85.04	52.62	58
32	84.80	52.99	84.57	53.36	84.34	53.73	84.10	54.10	57
33	83.87	54.46	83.63	54.83	83.39	55.19	83.15	55.56	56
34	82.90	55.92	82.66	56.28	82.41	56.64	82.16	57.00	55
35	81.92	57.36	81.66	57.71	81.41	58.07	81.16	58.42	54
36	80.90	58.78	80.64	59.13	80.39	59.48	80.13	59.83	53
37	79.86	60.18	79.60	60.53	79.34	60.88	79.07	61.22	52
38	78.80	61.57	78.53	61.91	78.26	62.25	77.99	62.59	51
39	77.71	62.93	77.44	63.27	77.16	63.61	76.88	63.94	50
40	76.60	64.28	76.32	64.61	76.04	64.94	75.76	65.28	49
41	75.47	65.61	75.18	65.93	74.90	66.26	74.61	66.59	48
42	74.31	66.91	74.02	67.24	73.73	67.56	73.43	67.88	47
43	73.14	68.20	72.84	68.52	72.54	68.84	72.24	69.15	46
44	71.93	69.47	71.63	69.78	71.33	70.09	71.02	70.40	45
45	70.71	70.71							
	Dep.	Lat.	Dep.	Lat.	Dep.	Lat.	Dep.	Lat.	Degrees.
	DEGREES.		¼ DEGREE.		½ DEGREE.		¾ DEGREE.		

Published by H. S. CROCKER COMPANY, Stationers, Drawing Materials, Mathematical Instruments, etc., San Francisco.

257.6
212
22.67
↓
882