

ILLINOIS ST.
EL CAJON - UNIVER.

{ LINCOLN AVE. } PARK
POLK AVE. } TO
HOWARD AVE. } BOUNDARY.

~~JACKSON AVE.~~
MEADE ARIZONA -
BOUNDARY.

400

LEVEL

190

F.B. 190

Table showing the distance of latitude and departure in running 80 chains at any course from 1 to 60 minutes.

MINUTES	LKS.	MINUTES	LKS.	MINUTES	LKS.
1	2	21	49	41	95 $\frac{2}{3}$
2	4	22	51 $\frac{1}{3}$	42	98
3	7	23	53 $\frac{2}{3}$	43	100 $\frac{1}{3}$
4	10	24	56	44	102 $\frac{2}{3}$
5	14	25	58 $\frac{1}{3}$	45	105
6	18	26	60 $\frac{2}{3}$	46	107 $\frac{1}{3}$
7	22	27	63	47	109 $\frac{2}{3}$
8	27	28	65 $\frac{1}{3}$	48	112
9	31	29	67 $\frac{2}{3}$	49	114 $\frac{1}{3}$
10	36	30	70	50	116 $\frac{2}{3}$
11	41	31	72 $\frac{1}{3}$	51	119
12	46	32	74 $\frac{2}{3}$	52	121 $\frac{1}{3}$
13	51	33	77	53	123 $\frac{2}{3}$
14	57	34	79 $\frac{1}{3}$	54	126
15	62	35	81 $\frac{2}{3}$	55	128 $\frac{1}{3}$
16	68	36	84	56	130 $\frac{1}{3}$
17	74	37	86 $\frac{1}{3}$	57	133
18	80	38	88 $\frac{2}{3}$	58	135 $\frac{1}{3}$
19	86	39	91	59	137 $\frac{2}{3}$
20	92	40	93 $\frac{1}{3}$	60	140

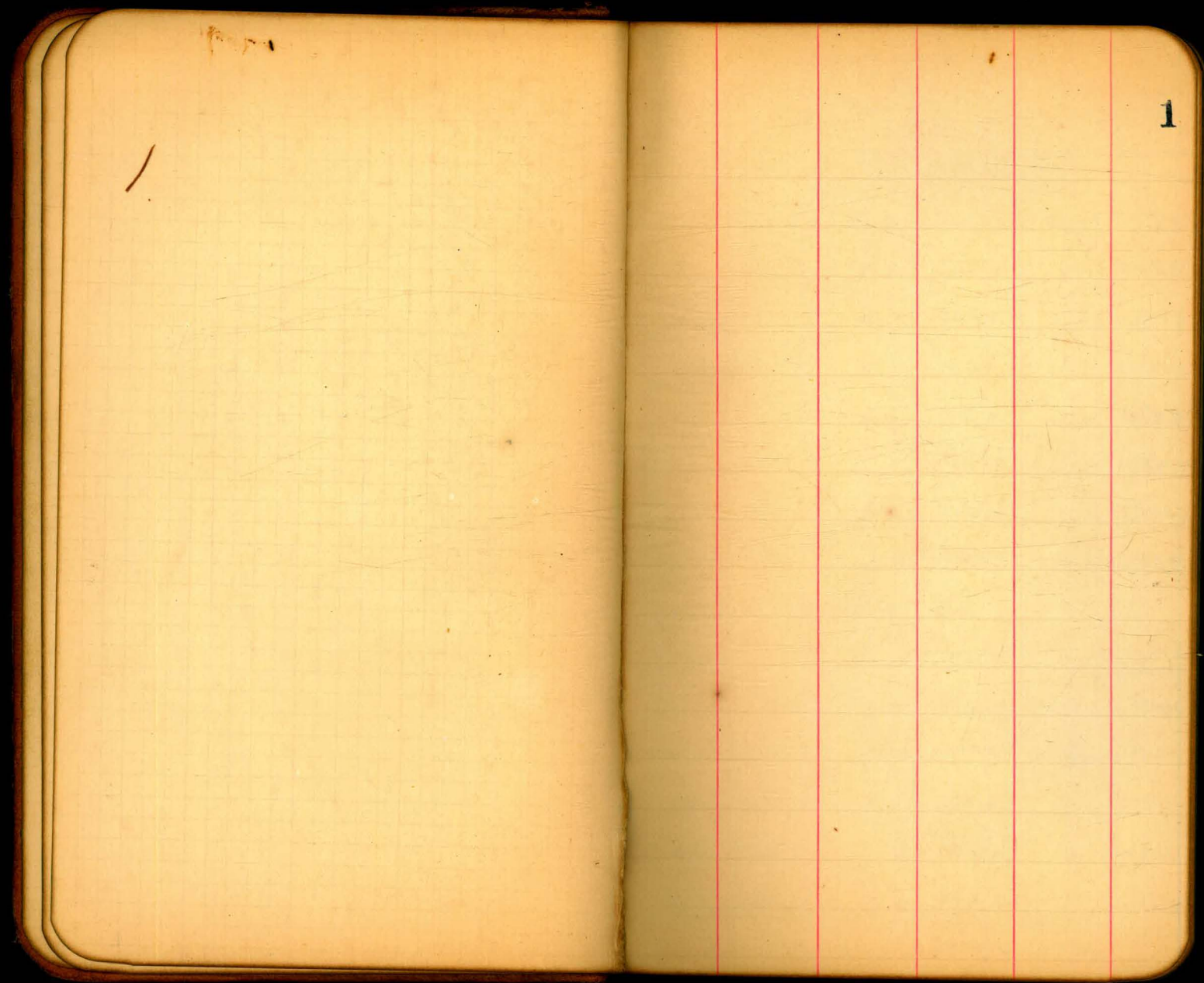
Return to City Engineers Office
City Hall, San Diego, Cal.

TABLE FOR RUNNING ON SLOPES.

In the following table the first column shows the angle, the second the number of links to be added to a chain on the slopes, to make one chain, horizontal measurement.

Angle	COR. IN LINKS	Angle	COR. IN LINKS	Angle	COR. IN LINKS	Angle	COR. IN LINKS
0		0		0		0	
4	0.24	11	1.88	18	5.14	25	10.54
5	0.38	12	2.24	19	5.76	26	11.26
6	0.55	13	2.63	20	6.42	27	12.24
7	0.76	14	3.06	21	7.11	28	13.37
8	0.98	15	3.53	22	7.85	29	14.34
9	1.24	16	4.02	23	8.64	30	15.47
10	1.55	17	4.56	24	9.47	35	22.07

Return to City Engineers Office
City Hall, San Diego, Cal.



ILLINOIS ST.

COVERT,
WETMORE,
MOORE

EL CAJON - UNIVERSITY

12/8/05

1.04	367.55	366.51
0	S. L. EL CAJON	
37.5-S		
87.5-S		
137.5-S		
187.5-S		
237.5-S		
287.5-S		
337.5-S	N. L. HOWARD	
	6.36	361.19
357.5-S	C. L. HOWARD	
372.5-S		
377.5-S	C. L. HOWARD	
	S. L. HOWARD	
50-S		
100-S		
150-S		
12.88	372.56	7.87 359.68

E. L.

C. L.

W. L.

2

N. W. ELCAJON & ILLINOIS - HUB -

2.1	365.5	2.3	365.3	2.7	364.9
2.6	365.0	3.0	364.6	3.1	364.5
3.4	364.2	4.0	363.6	3.9	363.7
4.4	363.2	4.5	363.1	5.1	362.5
4.9	362.7	5.2	362.4	5.2	362.4
5.9	361.7	6.1	361.5	6.2	361.4
6.5	361.1	6.7	360.9	6.5	361.1
6.1	361.5	6.7	360.9	6.3	361.3

N. W. ILLINOIS & HOWARD - HUB

7.1				6.3	
				5.8	
7.1	360.5	7.0	360.6	5.2	362.4
7.2	360.4	6.7	360.9	6.4	361.2
7.3	360.3	7.0	360.6	6.6	361.0
7.7	359.9	7.4	360.2	7.1	360.5
8.1	359.5	7.4	360.2	6.7	360.9

ILLINOIS ST.

372.56

150-S

200-S

250-S

300-S

350-S

400-S

450-S

500-S

550-S = N. L. POLK

600-S = H. L. POLK

C. L. POLK

S. L. POLK

40-S

50-S

100-S

150-S

200-S

E. L.

C. L.

W. L.

3

13.2 359.4 12.5 360.1 11.8 360.8

12.4 360.2 12.0 360.6 11.4 361.2

12.0 360.6 11.6 361.0 11.0 361.6

11.4 361.2 10.8 361.8 10.4 362.2

10.8 361.8 10.1 362.5 9.3 363.3

9.7 362.9 9.1 363.5 8.3 364.3

9.2 363.4 8.3 364.3 7.6 365.0

8.2 364.4 7.2 365.4 6.4 366.2

7.4 365.2 6.5 366.1 5.9 366.7

6.6 366.0 5.9 366.7 5.4 367.2

6.3 366.3 5.7 366.9 5.4 367.2

6.6 366.0 6.2 366.4 5.2 367.4

5.2 367.4

5.6 367.0 6.5 366.3 5.6 367.0

6.5 366.1 6.3 366.3 6.1 366.8

6.6 366.0 6.3 366.3 6.4 366.2

6.8 365.8 6.8 365.8 6.7 365.9

ILLINOIS ST

372.56

240-S

250-S

265-S

300-S

2.57 366.50 8.63 363.93

350-S

380-S

400-S

450-S

480-S

500-S

550-S

575-S

590-S

600-S = N. L. LINCOLN

C. L. LINCOLN

O

S. L. LINCOLN

E. L.

C. L.

W. L.

4

6.6 366.0

7.0 365.6 7.2 365.4 5.9 366.7

7.6 365.0

7.7 364.9 7.6 365.0 7.8 364.8

2.0 364.5 2.4 364.1 2.5 364.0

3.2 363.5

2.4 364.1 2.7 363.8 2.5 364.0

2.8 363.7 2.9 363.6 2.2 364.3

3.7 362.8

2.7 363.8 2.5 364.0 2.5 363.7

3.5 363.0 3.7 362.8 3.7 362.8

3.5 362.7

3.7 362.8 2.5 364.0

3.9 362.6 4.1 362.4 3.3 363.2

4.2 362.3 4.1 362.4 3.9 362.6

4.0 362.5 4.3 362.2 3.5 362.0

ILLINOIS ST.

366.50

3.45 363.05

50-S

85-S

100-S

145-S

150-S

170-S

155-S

165-S

190-S

200-S

205-S

215-S

250-S

265-S

280-S

290-S

E.L.

C.L.

W.L.

5

S.W. LINCOLN & ILLINOIS - PLUG

4.5 362.0 4.5 362.0 4.3 362.2

3.4 363.1

4.7 361.8 4.6 361.9 4.5 362.0

5.0 361.5

4.9 361.6 3.8 362.7 4.0 362.5

3.5 363.0 5.4 361.1

3.5 363.0

5.3 361.2

4.5 362.0 5.1 361.4

5.2 361.3 5.2 361.3 4.1 362.4

3.7 362.8

5.5 362.0

5.4 361.1 4.2 362.3 5.2 361.3

3.8 362.7

5.5 361.0

4.9 361.6

ILLINOIS ST.

366.50

300-S

325-S

350-S

390-S

400-S

420-S

440-S

425-S

450-S

475-S

500-S

530-S

550-S

600-S = N.L. UNIVERSITY

3.95

362.55

362.55
362.55
100
OK

E.L.

C.L.

W.L. 6

5.4 361.1

6.1 360.4

4.7 361.8

5.1 361.4

5.5 361.0

5.9 360.6

6.0 360.5

6.3 360.2

5.9 360.6

6.2 360.3

6.5 360.0

7.4 359.1

7.1 359.4

6.9 359.6

6.8 359.7

7.1 359.4

7.5 359.0

6.8 359.7

7.7

7.6 368.9

7.8 358.7

7.7 358.8

6.9 359.6

8.1 358.4

8.5 358.0

7.5 359.0

8.5 358.0

8.3 358.2

8.8 357.7

N.W. COR. IOWA. & LINCOLN HUB

LINCOLN AVE
 BOUNDARY - PARK BLD. { COVERT
 12/8/05 { WETMORE
 MOORE

9.26	351.71	342.65
	7.12	344.79
26 - E. OF W.L. WISCONSIN = W.L. BOUNDARY.		
35 E. OF W.L. WISCONSIN = W.L. BOUNDARY.		
0 = W.L. WISCONSIN		
50-W		
100-W		
150-W		
200-W		
250-W		
300-W = E. L. MISSOURI		
+10		
+20		
+30		
+40 = C. L. MISSOURI		
+55		
0 = W. L. MISSOURI		

N.L.	C.L.	S.L.	7
N.W.	MISSOURI & LINCOLN.	HUB.	
S.W.	WISCONSIN & LINCOLN	HUB	
		7.8	344.1
8.1	343.8		
8.0	343.9	7.1	344.8
5.9	346.0	6.4	345.5
5.5	346.4	6.7	345.2
5.5	346.4	7.6	344.3
5.6	346.3	7.9	344.0
7.0	344.9	8.9	342.0
7.8	344.1	9.8	342.1
		10.5	341.4
		12.0	339.7
		8.8	343.1
8.1	343.8	8.3	343.6
		8.6	343.3
9.3	342.6	6.4	345.5

LINCOLN

351.91

10-w

20-w

25-w

30-w

50-w

70-w

12.86 364.13 0.64 351.27

100-w

130-w

150-w

200-w

250-w

290-w

300-w = E.L. IOWA

+05

+10

+22

N.L.

11.1 340.8

8.8 343.1

7.1 344.8

3.6 348.3

1.1 350.8

11.0 353.1

7.2 356.9

4.2 359.9

3.1 361.0

2.5 362.6

1.7 362.4

1.1 363.0

2.3 361.8

2.0 362.1

S.L

8

4.7 347.2

2.4 349.5

0.6 351.3

8.9 355.2

7.5 356.6

6.6 357.5

4.2 359.9

3.5 360.6

3.3 360.8

2.0 362.1

2.8 361.3

2.1 362.0

2.6 361.5

LINCOLN AVE.

364.13

+23

+40 = C.L. IOWA.

+54

+55

0 = W.L. IOWA

1.57 362.56

$\frac{362.56}{.01}$
362.55

50-W

100-W

125-W

150-W

4.81 367.74, 1.22 362.91

175-W

200-W

250-W

300-W = E.L. ILLINOIS

+40 = C.L. ILLINOIS

+70

N.L

3.0 361.1

2.1 362.0

2.7 361.4

1.8 362.3

1.6 362.5

1.4 362.7

1.2 362.9

1.8 362.3

0.9 363.2

4.5 363.2

5.0 362.7

5.1 362.6

5.3 362.4

4.1 363.6

9

S.L

3.4 360.7

2.5 361.6

3.4 360.7

2.0 362.1

1.6 362.5

1.6 362.5

2.2 361.9

1.5 362.6

1.9 362.2

4.7 363.0

5.2 362.5

5.0 362.7

5.4 362.3

5.5 362.2

LINCOLN AVE

367.72

+75

0 = W. L. ILLINOIS

4.67 363.05

30-W

50-W

60-W

100-W

120-W

140-W

150-W

175-W

185-W

195-W

200-W

210-W

220-W

240-W

N.L

4.5 363.2

S.W. ILLINOIS & LINCOLN - HUB.

4.9 362.8

5.0 362.7

3.7 364.0

5.0 362.7

4.6 363.6

5.0 362.7

5.0 362.7

S.L 10

5.4 362.3

4.7 363.0

5.2 362.5

3.3 364.4

5.3 362.4

5.1 362.6

5.3 362.4

5.6 362.1

4.4 363.3

4.4 363.3

5.3 362.4

5.5 362.2

3.3 364.4

LINCOLN ST

367.72

250-W

270-W /

295-W

300-W = E. L. OHIO

+20

+30

+40 = C. L. OHIO

+50

0 = W. L. OHIO

5.73 361.99

20-W

45-W

50-W

60-W

100-W

140-W

150-W

H. L.

4.5 363.2

5.1 362.6

4.9 362.8

4.3 363.4

3.7 364.0

5.3 362.4

S. W. LINCOLN & OHIO

5.3 362.4

3.5 364.2

5.1 362.6

5.0 362.7

5.7 362.0

4.5 363.2

S. L. 11

3.3 364.4

5.6 362.1

2.7 365.0

2.9 364.8

6.0 361.7

5.7 362.0

3.9 363.8

3.5 364.2

5.7 362.0

6.0 361.7

4.4 363.3

5.3 362.4

6.1 361.6

6.1 361.6

4.9 362.8

LINCOLN AVE

367.72

160-W

175-W

200-W

210-W

230W

250-W

275-W

295-W

300-W = E.L. - 30TH

7.08 368.27 6.53 361.19

#15-W

#20-W

+40 = C.L. - 30TH

+50

0 = W.L. 30TH ST

15-W

25-W

M.L.

4.3 363.4

5.6 362.1

4.4 363.3

5.7 362.0

5.3 362.4

6.1 361.6

6.2 361.5

S.E. LINCOLN & 30TH

5.9 362.4

6.4 361.9

6.0 362.3

5.3 363.0

S.L

12

6.9 360.8

6.2 361.5

6.8 360.9

5.8 361.9

7.3 360.4

6.7 361.0

7.4 360.3

6.6 361.1

6.6 361.7

8.0 360.3

7.9 360.4

6.7 361.6

7.4 360.9

11

LINCOLN AVE.

308.27

30-W

40-W

50-W

80-W

100-W

150-W

190-W

200-W

210-W

220-W

240-W

250-W

275-W

300-W = E. L. KANSAS

5.30 362.97

+10

+25

H.L

6.2 362.1

5.7 362.6

4.3 364.0

5.7 362.6

5.6 362.7

5.5 362.8

3.8 364.5

5.4 362.9

5.3 363.0

5.7 362.6

13

S.L

6.9 361.4

7.3 361.0

6.7 361.6

6.4 361.9

6.1 362.2

4.8 363.5

4.6 363.7

6.0 362.3

4.4 363.9

6.3 362.0

5.9 362.4

8

6.0 362.3

LINCOLN AVE:

368.27

+40 = C.L. KANSAS

+45

+55

+60

+80 = O = W.L. KANSAS

5-W

20-W

50-W

60-W

85-W

80-W

100-W

110-W

140-W

150-W

165-W

160-W

N.L.

3.3 365.0

5.0 363.3

6

4.0 364.0

4.6 363.7

3.6 364.7

4.1 364.2

2.9 365.4

3.9 364.4

4.0 364.3

3.0 365.3

3.9 364.4

S.L. 14

5.0 363.3

6.2 362.1

6.2 362.1

5.4 362.9

6.3 362.0

6.1 362.2

5.6 362.7

4.9 363.4

4.6 363.7

5.1 363.2

5.6 362.7

LINCOLN AVE.

368.27

185-W

190-W

195-W

200-W

210-W

220-W

250-W

290-W

300-W = E.L. UTAH

+24

+25

+40 = C.L. UTAH

+55

+56

+80 = 0 = W.L. UTAH

1.57 366.27 3.63 364.64

10-W

N.L

3.2 365.1

3.1 365.2

4.4 363.9

3.8 364.5

3.7 364.6

3.6 364.7

4.2 364.1

4.7 363.6

4.2 364.1

5.0 363.3

4.2 364.1

4.2 364.1

N.E. LINCOLN & UTAH HUB

W.L. 15

5.0 362.3

3.5 364.8

4.3 364.0

4.5 363.8

5.8 362.5

5.6 362.7

5.8 362.5

5.5 362.8

6.6 361.7

6.0 362.3

6.1 362.2

5.6 362.7

6.5 361.8

5.1 361.1

LINCOLN AVE.

36621

50-W
 75-W
 90-W
 100-W
 150-W
 190-W
 200-W
 225-W
 245-W
 250-W
 260-W
 280-W
 300-W = E. L. IDAHO
 +15-
 +25
 +40 = C. L. IDAHO
 +80 = O = W. L. IDAHO

N. L

1.7 364.5
 1.4 364.8

 2.7 363.5
 3.1 363.1

 3.6 362.6
 4.1 362.1

 3.9 362.9

 3.9 362.9

 3.5 362.7
 4.5 361.7

S. L

4.8 361.4

 3.7 362.5
 4.2 362.0
 4.4 361.8
 4.6 361.6
 4.2 362.0
 4.7 361.5
 3.8 362.4
 4.2 362.0
 4.8 361.4
 3.6 362.6
 5.5 360.7
 4.3 361.9

 6.0 360.2
 6.0 360.2

16

LINCOLN AVE.

366.21

4.54 361.67

40-W

50-W

75-W

100-W

150-W

160-W

200-W

250-W

0.22 353.97 12.46 355.75

300-W = E. L. OREGON

C. L. OREGON

W. L. OREGON

6.63 347.34

50-W

100-W

0.10 341.09 12.98 340.99

N. L.

S. L.

17

N.W. LINCOLN & IDAHO - HUB

5.2 361.0

5.5 360.7

7.0 359.2

8.5 357.7

7.9 358.3

8.9 357.3

4.3 361.9

1.2 352.8

2.6 351.4

3.9 350.0

S.W. LINCOLN & OREGON - HUB

7.7 346.3

11.5 342.5

6.3 359.9

6.9 359.3

6.9 359.3

9.2 357.0

10.8 355.4

12.5 353.7

2.9 351.1

4.9 349.1

6.6 347.4

8.0 346.0

13.6 340.4

LINCOLN AVE.

341.09

150-W

200-W

250-W

265-W

0.78 329.23 12.64 328.45

300-W = E.L. CALIF.

300-W C.L. CALIF.

0 W.L. CALIF.

5.82 323.41

50-W

100-W

135-W

150-W

200-W

250-W

300-W = E.L. ARIZONA.

+10

11.4

2.2 238.9

6.7 234.4

10.5 330.6

11.6 329.5

1.9 327.3

4.0 325.2

5.8 323.4

N.W. LINCOLN & CALIF. - HUB.

6.8 322.4

7.5 321.7

7.0 322.2

8.0 321.2

8.7 320.5

9.1 320.1

10.3 318.9

9.4 319.8

5.2

18

5.1 336.0

9.0 332.1

12.1 329.0

3.7 325.5

5.6 323.6

6.7 322.5

8.1 321.1

8.7 320.5

9.5 319.4

10.6 318.6

10.5 318.7

10.6 318.6

LINCOLN AVE

329.23

C.L. ARIZONA.

O W.L. ARIZONA.

11.56 317.67

30-W

50-W

100-W

150-W

200-W

250-W

300-W E.L. TEXAS.

C.L. TEXAS

O W.L. TEXAS.

0.27 316.54 12.96 316.27

316.37
316.27
10

50-W

100-W

150-W

200-W

N.L.

S.L.

10.2 319.0

11.1 318.1

10.3 318.9

11.5 317.7

S.W. LINCOLN & ARIZONA HUB.

9.9 319.3

10.8 318.4

12.0 317.2

11.0 318.0

12.7 316.5

11.4 317.7

13.3 315.9

11.4 317.7

12.8 316.4

10.6 318.6

11.3 317.9

10.7 318.5

11.4 317.8

11.7 317.5

12.1 317.1

12.0 317.2

13.0 316.2

S.W. LINCOLN & TEXAS

1.4 315.1

2.3 314.2

3.2 313.3

4.1 312.4

5.2 311.5

6.0 310.5

8.2 308.3

8.3 308.2

LINCOLN AVE.

316.54

250-W

0.50 304.01 13.03 303.51

300-W = E.L. LOUISIANA.

1.77 302.24

302.35
302.24
11

+40 C.L. LOUISIANA.

+50

0 = W.L. LOUISIANA.

50-W

100-W

140-W

150-W

200-W

0.22 291.44 12.79 291.22

160-W

175-W

180-W

200-W

N.L

S.L 20

10.6 305.9

10.8 305.7

1.8 302.2

1.0 303.0

N.E. COR. LINCOLN & LOUISIANA - HUB.

4.2 299.8

3.1 300.9

9

3.7 300.3

6.4 297.6

5.6 298.4

8.0 296.0

6.2 297.8

9.1 294.9

7.5 296.5

11.8 292.2

13.8 290.2

9.1 294.9

11.0 293.0

12/9/05

2.9 288.5

5.3 286.1

7.6 283.8

14.5 276.9

03

LINCOLN AVE

291.44

220-W

230-W

250-W

275-W

300-W = E.L. MISSISS.

+30

+40 = C.L. MISSISS

+50

+55

+65

0 = W.L. MISSISS.

25-W

4.17 287.27

50-W

100-W

125-W

150-W

N.L

14.4 277.0

8.4 283.0

4.4 287.0

4.2 287.0

4.6 284.8

4.2 287.2

N.W. COR. LINCOLN & MISSISS.

3.9 287.5

0.5 290.9

S.L

21

0.8 290.6

2.7 288.9

10.1 286.3

14.5 276.9

18.5 272.9

18.5 272.9

17.0 274.0

15.2 276.2

15.1 276.3

13.6 277.8

12.2 279.2

7.6 283.8

6.1 286.3

4.1 287.3

LINCOLN AVE.

5.74 296.96 0.22 291.22

100-W

150-W

185-W

190-W

200-W

205-W

220-W

250-W

300-W = E. L. ALABAMA.

C. L. ALABAMA.

W. L. ALABAMA

0.23 284.43 12.76 284.20

C. L. ALABAMA.

0 W. L. ALABAMA

50-W

100-W

N. L.

5.8 291.2

4.0 293.0

3.5 293.5

0.7 296.3

0.4 296.6

0.3 296.7

4.4 292.6

5.5 291.2

7.7 289.3

9.1 287.9

10.4 286.6

S. P. LINCOLN & ALABAMA - HUB

1.8 282.6

2.6 281.8

3.9 280.5

6.2 278.2

S. L. 22

9.7 287.3

11.2 285.2

12.8 284.2

10.4

LINCOLN AVE.

284.43

150-W

20.44 272.03 12.84 271.59

200-W

215-W

250-W

265-W

280-W

300-W = E.L. FLORIDA

+10

+12

+15

+16

+20

+40 = C.L. FLORIDA

+50

O = W.L. FLORIDA

10-W

N.L

7.6 276.8

1.6 270.4

3.5 268.5

5.0 267.0

5.9 266.1

5.3 266.7

7.8 264.2

10.7 261.3

10.7 261.3

10.5 261.5

12.0 260.0

11.2 260.8

S.L

23

9.9 274.5

2.7 269.3

5.8 263.2

7.5 264.5

9.5 262.5

10.7 261.7

14.8 257.2

16.3 255.3

15.4 256.6

12.3

12.3 259.7

10.4 261.6

1

LINCOLN AVE.

272.93

15-W

20-W

8.38 263.65

30-W

50-W

13.01 284.93 0.11 271.92

50-W

100-W

115-W

125-W

150-W

13.00 297.80 0.13 284.80

150-W

160-W

180-W

200-W

220-W

N.L.

12.7 259.3

11.8 260.2

S.W. LINCOLN & FLORIDA - HUB

4.3 267.7

S.L. 24

1.4 270.6

11.7 273.2

7.3 274.6

6.5 278.4

8.5 276.0

5.4 279.5

0.3 284.6

12.2 285.6

11.7 286.1

7.0 290.8

7.3 290.5

4.7 292.9

5.6 292.2

2.2 295.6

LINCOLN AVE

210-w ✓
 12.98 310.74 0.04 297.76

230-w

245-w

235-w

240-w

250-w

255-w

275-w

300-w 13.26 323.89 0.11 310.63

300 = E.L. GEORGIA

+40 C.L. "

12.99 336.59 0.29 323.60

+60

0 = W.L. GEORGIA.

20-w

15-w

N.L

S.L

25

2.5 295.3

13.2 297.5

6.0 304.7

6.0 304.7

5

5.3 305.4

8.5 302.2

5.1 305.6

8.2 302.5

6.8 303.9

6.3 304.4

N.E. GEORGIA - LINCOLN ON HUB

13.3 310.6

10.2 313.7

4.6 319.2

0.2 323.7

11.9 324.7

9.3 327.3

5.9 330.7

3.3 333.3

6.3 327.3

LINCOLN AVE.

336.59

50-W

100-W

150-W

200-W

250-W

300-W = E. L. PARK

3.51 333.08

2.05 334.54

N.L.

3.0 333.6

1.7 334.9

1.7 334.9

2.2 332.4

2.6 334.0

3.8 332.8

N.E. PARK BLD. & LINCOLN ST. NAIEM PHONE
POLE

S.L. 26

2.3 334.3

1.7 334.9

2.2 334.4

3.2 333.4

4.0 332.6

5.3 331.3

POLK AVE

COVERT
WETMORE
MOORE

PARK BLD. - BOUNDARY ST.
12/9/05

	7.62	342.16	334.54
0		4.32	337.74
0 =	E.L.	PARK BLD.	
50 - E			
100 - E			
150 - E			
200 - E			
220 - E			
240 - E			
245 - E			
250 - E			
300 - E =	W. L.	GEORGIA	
	C. L.	"	
0	E. L.	"	
50		6.83	335.33
10 - E			
	0.05	329.29	12.92 329.24

27

N.L.		C.L.		S.L.	
N.E.	POLK & PARK	ON HUB			
4.3	337.9	4.2	338.0	4.6	337.6
5.3	336.9	4.7	337.5	5.6	336.6
5.1	337.1	5.0	337.2	5.4	336.8
5.3	336.9	4.8	337.4	4.8	336.4
5.0	337.2	4.5	337.7	5.2	337.0
3.4	338.8				
				4.9	337.2
5.2	337.0				
4.7	337.5	4.8	337.4	3.6	338.6
4.7	337.5	4.7	337.5	4.7	337.5
5.3	336.9	5.2	337.0	4.9	337.3
6.1	336.1	7.3	334.9	6.8	335.4
S.E.	GEORGIA & POLK	ON HUB			
6.9	335.3				

POLK AVE.

329.29

50-E

0.33 316.47 13.15 316.14

100-E

135-E

140-E

145-E

150-E

0.09 303.43 13.03 303.44

200-E

0.16 290.59 13.10 290.43

250-E

295-E

300-E = W.L. FLORIDA

+5

4.04 281.48 13.14 277.45

+30

+25

N.L.

C.L.

S.L. 28

1.7 327.6 2.7 326.6 4.1 325.2

0.6 315.9 0.2 316.7 2.2 314.3

6.5 310.0

10.7 305.8

9.7 306.8

10.7 305.8 9.9 306.6 11.8 304.7

4.6 298.9 6.2 297.3 7.8 295.7

0.4 290.2 0.9 289.7 3.1 287.5

9.9 280.7

8.1 282.5 10.1 280.5 11.0 279.6

10.4 280.2

6.1 275.4 5.4 276.1

6.8 274.7

POLK AVE.

281.49

E 40 C.L. FLORIDA.

+50

+60

E.L. FLORIDA

01' E

10' E

15-E

20 E

25-E

30-E

35-E

43-E

44-E

50-E

70-E

100-E

150-E

12.75 294.13 0.11 281.38

N.L.

C.L.

S.L. 29

5.5 276.0 6.0 275.5 7.1 274.4

5.8 275.7 7.7 273.8

9.2 272.3 10.1 271.4

8.9 272.6 7.7 273.8 10.0 271.5

11.9 269.6

9.7 272.6

11.8 269.7

11.3 270.2

9.6 271.9 9.5 272.0

11.2 270.2

13.1 268.4

13.0 268.5

10.8 270.7

8.2 273.3 8.5 273.0 10.2 271.3

8.2 273.3

5.8 275.7 5.5 276.0 6.5 275.0

2.6 278.9 3.3 278.2 2.5 279.0

POLK AVE.
294.13

200-E

230-E

250-E

275-E

300 E = W. L ALABAMA

+ 20

+ 40 C.L.

+ 55

+ 65

13.11 307.21 0.03 294.10

13.02 294.19

E.L. ALABAMA

20-E

35-E

50-E

80-E

100-E

30

N.L.

C.L.

S.L.

12.2 281.9 12.1 282.0 12.4 281.7

11.3 282.8 10.3 283.8

9.2 284.9 8.2 285.9 7.9 286.2

8.1 286.0

6.3 287.8 5.5 288.6 5.0 289.1

2.6 291.5 2.5 291.6

2.4 291.7 2.2 291.9 2.0 292.1

1.5 292.6

0.0 294.1

N.E LINCOLN ALABAMA ON HUB

13.0 294.2 12.4 294.8 12.7 294.5

12.5 294.7

10.7 296.5

9.9 297.3 10.8 296.4

9.0 298.2

5.5 301.7 6.6 300.6

POLK AVE.

307.21

125-E

150-E

175-E

200-E

250-E

6.30 313.49 0.02 307.19

270-E

295-E

300-E = W. L MISSISS

+15

+30

+40 = C. L MISSISS

+50

+70

E. L - MISSISS.

2.85 310.64

10-E

31

N. L

S. L

6.0 301.2

7.2 300.0

4.1 303.1

4.5 302.7

4.5 302.7

4.7 302.5

2.9 304.2

3.4 303.8

0.7 306.5

0.9 306.3

5.1 308.4

5.6 307.9

4.6 308.9

5.8 307.7

3.7 309.8

4.8 308.7

4.2 309.3

3.4 310.1

2.7 310.8

3.7 309.8

1.9 311.6

2.9 310.6

S. E. LINCOLN & MISSISS. ON. HUB.

2.7 310.8

POLK AVE

313.49

35-E

50-E

75-E

80-E

100-E

150-E

175-E

190-E

200-E

240-E

250-E

300-E

W. L. LOUISIANA

+ 35

+ 40

C. L. "

+ 45

+ 50

+ 60

N. L.

1.5 312.0

1.8 311.7

0.0 313.5

1.1 312.4

1.0 312.5

1.6 311.9

3.2

3.2 310.3

6.4 307.1

9.3 304.2

12.6 300.9

15.5 298.0

16.2 297.5

S. L.

32

2.8 310.7

2.3 311.2

3.2 310.3

4.7 308.8

7.2 306.3

8.4 305.1

9.1 304.4

10.9 302.6

12.9 300.6

17.8 295.7

18.4

18.4 295.1

17.3 296.2

15.1 298.4

POLK AVE

313.49

+55

+60

E. L. LOUISIANA

25-E

50-E

75-E

90-E

100-E

120-E

140-E

150-E

165-E

13.01 325.88 0.62 312.87

200-E

225-E

250-E

275-E

14.4

17.3 296.2

15.7 297.6

13.3 300.2

9.2 304.3

7.3 306.2

6.5 307.6

3.9 309.6

2.5 311.0

11.0 314.9

7.3 318.6

5.7 320.2

5.2

33

12.7

12.7

12.7 300.8

10.2 303.0

7.8 305.7

7.2 306.2

5.3 308.2

5.2 308.3

1.7 311.8

2.3 311.2

0.4 313.1

10.7 315.2

8.4 317.5

7.0 318.9

POLK AVE

325.88

280-E

290-E

300-E = W. L. TEXAS

+30

2.43 323.45

323.55
323.45
10

+40 = C. L. TEXAS

0 = E. L. "

10.07 335.77 0.18 325.70

50-E

100-E

150-E

200-E

250-E

300-E = W. L. ARIZONA

C. L. "

+78- E. L. "

E. L. "

N. L.

4.1 321.8

1.0 324.9

N. W. COR. POLK & TEXAS ON HUB

1.0 324.9

0.5 325.4

9.1 326.7

8.6 327.2

8.0 327.8

7.8 328.0

7.4 328.4

7.1 328.7

6.8 329.0

6.1 329.7

5.2 330.6

S. L. 34

3.4 322.5

3.3 322.6

1.2 324.7

1.2 324.7

0.6 325.3

9.3 326.5

8.5 327.3

7.9 327.9

7.8 328.0

7.5 328.3

7.6 328.2

7.3 328.5

5.7

5.9 329.9

POLK AVE.

335.77

5-E			
25-E			
50-E			
65-E			
75-E			
85-E			
90-E			
100-E			
125-E			
135-E			
150-E			
180-E			
200-E			
225-E			
<hr/>			
	13.09	348.27	0.59 335.18
250-E			
275-E			

N.L.

44	331.4
5.8	330.0
5.5	330.2
5.0	330.8
3.4	332.4
4.1	332.7
4.2	331.6
2.7	332.1
1.0	333.8

S.L.

35

6.8	329.0
6.1	329.7
5.3	330.5
6.3	329.5
5.9	329.9
4.6	331.2
4.6	331.2
3.3	332.5
2.7	333.1
0.7	335.1

9.8 339.5

12.2 336.1

10.5 337.8

POLK AVE

348.27

300-E = W.L. - CALIF.

+15

+40 = C.L. "

13.02 361.96 0.28 347.99

E.L. CALIF.

10.59 350.42

50.42
350.42
100

30-E

50-E

60-E

65-E

70-E

100-E

150-E

175-E

200-E

12.80 373.10 0.72 360.29

H.L.

S.L. 36

6.0 342.3

8.0 340.3

5.9 342.4

1.6 346.7

3.5 344.8

10.0 350.4

12.3 348.7

N.E. CALIF. & POLK - ON HOB.

9.5 351.5

6.0 355.0

8.5 352.5

5.5 355.5

4.6 356.4

6.6 354.9

3.0 358.0

4.6 356.4

0.9 360.1

3.0 358.0

0.0 361.0

0. 361.0

0.9 360.1

POLK AVE.

373,10

200 E

250 E

260 E

270 E

275 E

300 E = W.L. OREGON

+10

+40 = C.L. "

+70

E.L. OREGON

6.71 366.39

$$\begin{array}{r} 366.42 \\ 366.32 \\ \hline .10 \end{array}$$

50 E

100 E

140 E

150 E

175 E

200 E

N.L

11.2 366.9

9.5 363.6

9.4 363.7

8.5 364.6

7.9 365.2

6.4 366.7

5.2 367.9

S.E. POLK & OREGON ON HUB

4.3 368.8

3.9 369.2

3.5 367.6

3.2 369.9

S.L

37

11.1 362.0

9.9 363.2

8.7 364.4

8.1 365.0

8.0 365.1

6.7 366.4

6.7 366.4

5.2 367.9

4.9 368.2

5.0 368.1

3.9 369.2

4.6 368.5

4.5 368.6

POLK AVE.

373.10

250-E

300 E = W. L. IDAHO

+30

+40 C. L. IDAHO

+65

0 = E. L. IDAHO

50-E

100 E

150-E

200 E

250-E

300 E W. L. UTAH

5.16 373.34 4.92 368.18

C. L. UTAH

E. L. UTAH

25-E

30-E

N. L.

3.1 370.0

2.8 370.3

3.1 370.0

3.1 370.0

3.4 369.7

4.0 369.1

4.4 368.7

5.1 368.0

4.6 368.5

4.9 368.2

N.W. UTAH & POLK ON HUB. 12/11/05

4.3 369.1

4.8 368.6

4.6 368.8

S. L. 38

4.0 369.1

3.3 369.8

3.7 369.4

2.3 370.8

3.4 369.7

3.4 369.7

3.6 369.5

3.6 369.5

4.1 369.0

4.4 368.7

4.6 368.5

4.9 368.2

4.4 369.0

4.7 368.7

4.8 368.6

POLK AVE.

373.34

50-E		
70-E		
90-E		
100-E		
120-E		
130-E		
150-E		
200-E		
250-E		
300-E = W.L. KANSAS		
+30		
C.L. KANSAS		
+65		
E.L. KANSAS		
	4.48	368.86
15-E		
10-E		

N.L.

3.2	370.2
4.0	369.4
3.9	369.5
3.6	369.8
4.0	369.4
4.0	369.4
3.7	369.7
4.4	369.0
3.8	369.6
4.8	368.6
4.5	368.9
N.E. KANSAS & POLK ON HUB	
3.8	369.6

S.L. 39

3.9	369.5
4.2	369.2
3.6	369.8
4.2	369.2
3.2	370.2
3.9	369.5
4.1	369.3
4.1	369.3
4.5	368.9
4.7	368.7
4.7	368.7
3.5	369.9
5.1	368.3
5.0	368.4
3.8	369.6

POLK AVE.

373.24

40-E
50-E
70-E
85-E
100-E
150-E
160-E
165-E
175-E
200-E
210-E
220-E
225-E
240-E
235-E
250-E
265-E

N.L.

6.0 367.4
5.7 367.7
5.9 367.5
4.8 368.6
5.8 367.6
6.2 367.2

7.3 366.1

7.3 366.1
7.1 366.3

7.7 365.7

7.3 366.1
8.1 365.3

40

S.L.

5.7 367.7
5.6 367.8
5.8 367.6
4.6 368.8
5.7 367.7
6.8 366.6
6.8 366.6

5.6 367.8
7.5 365.9

6.5 366.9

7.9 365.5

7.1 366.3
6.8 366.6

POLK AVE

373.34

285-E

280-E

290-E

300-E - W.L. 30TH

4.52 369.64 8.22 365.12

+20

+15

+40 - C.L. 30TH

+50

E.L. 30TH

50-E

100-E

150-E

200-E

250-E

300-E = W.L. OHIO

4.50 365.14

365.15
365.14
00

N.L.

S.L. 41

8.1 365.3

8.5 364.9

7.5 365.9

7.8

8.2 365.2

7.8 365.6

N.W. 30TH & POLK ON HUB

5.1 364.5

5.6 364.0

5.8 363.8

4.5 365.1

5.6 364.0

5.9 363.7

5.8 363.8

6.0 363.6

6.1 363.5

6.2 363.4

5.9 363.7

6.2 363.4

6.1 363.5

6.1 363.8

5.8 363.8

5.7 363.9

5.5 364.1

4.5 365.1

5.0 364.6

N.W. OHIO & POLK

POLK AVE.

369.64

+20

+10

+40 = C.L. OHIO

+50

+70

E.L. OHIO

40-E

50-E

100-E

150-E

170-E

180-E

200-E

230-E

250-E

270-E

285-E

N.L.

3.2 366.4

4.5 365.1

3.8 365.8

2.9 366.7

3.2 366.4

3.0 366.6

2.7 366.9

2.3 367.3

2.4 367.2

S.L.

42

3.9 365.7

5.0 364.6

4.7 364.9

3.9 365.7

3.9 365.7

2.3 367.3

3.3 366.3

2.5 367.1

3.7 365.9

3.0 366.6

2.8 366.8

2.9 366.7

1.6 368.0

2.9 366.7

1.8 367.8

POLK AVE

300 0.24 368.84 1.84 367.80

300 E = W.L. ILLINOIS

+40 C.L. "

+60

E.L. "

25-E

50-E

75-E

100-E

125-E

150-E

200-E

220-E

240-E

250-E

300-E = W.L. IOWA

C.L. "

2.7
N.L.

S.L. 43

2.7

1.0 367.9

1.4 366.6

2.1 365.9

3.5 364.5

4.5 363.5

5.7 362.3

6.9 361.1

8.4 359.6

9.8 358.2

10.5 357.5

0.7 367.3

1.6 366.4

0.9 367.1

2.2 365.8

2.3 365.7

1.6 366.4

3.4 364.6

3.7 364.3

3.4 364.6

4.5 363.5

5.6 362.4

6.2 361.8

5.3 362.7

6.6 361.4

8.8 359.2

9.8 358.2

POLK AVE.

300	E.L.	IOWA.			356.77	356.77
	2.77	359.54	11.28		356.76	
30	+ 50 E					
	+ 100 - E					
	125 - E					
35	145 - E					
50	150 - E					
75	180 - E					
100	200 - E					
120	225 - E					
150	240 - E					
200	250 - E					
220	260 - E					
240	270 - E					
250	300 - E	W. L.	MISSOURI			
300		C. L.	"			
350		E. L.	"			

355.8

N. L.

S. L. 44

					11.3	356.7
	N. E.	IOWA	& POLK.	OH.	HUB.	
	3.6	355.9			4.3	355.2
	3.6	355.9			4.1	355.4
	4.5	355.0			6.5	
	6.5	353.0				
	6.1	353.4			5.8	353.7
					7.2	352.3
	5.1	354.4			6.6	352.9
					6.7	352.8
					5.1	354.4
	4.9	354.6			5.1	354.4
	4.0	355.5				
	4.6	354.9			4.3	355.2
	4.0	355.5			4.5	355.0
	4.3	355.2			4.5	355.0
	5.4	354.1			4.9	354.6

POLK AVE

359.54

3 50-E

3 100-E

110-E = W. L. BOUNDARY

115-E = W. L. BOUNDARY

132-E = W. L. BOUNDARY

N.L.

7.7 351.8

10.6 348.9

11.8 347.7

S.L. 45

7.5 352.0

11.2 348.3

14.4 345.1

15.8 343.7

HOWARD AVE.

COVERT
BROOKES
MOORE

BOUNDARY - PARK 12/11/05

30				
3	B.M	8.32	370.94	362.62
4	317.6	EAST OF IOWA = W.L. BOUNDARY.		
7	300	EAST OF IOWA = W.L. MISSOURI		
	295.6	EAST OF IOWA = W.L. BOUNDARY.		
7	250	"	"	"
5	200	"	"	"
7	150	"	"	"
10	100	"	"	"
12	50	"	"	"
1	35	"	"	"
2	20	"	"	"
2	EAST LINE IOWA			
2	+20			
2	+40	C. L.	IOWA	
3		W.L.	IOWA	
	3.84	366.48	8.32	362.62

N.L.

S.L 46

N.E. HOWARD & IOWA. ON HVB			
	3.6		367.3
	4.1		366.8
1.2		369.7	
1.6		369.3	
2.8		368.1	
5.2		365.7	
6.9		364.0	
7.5		363.4	
	8.2		362.6
	7.6		363.3
	8.3		362.6
	8.6		362.3
	4.2		366.7
	6.0		364.9
	7.5		363.4
	8.4		362.5
	9.1		361.8
	8.0		362.9
	9.3		361.6
	9.5		361.6
	9.7		361.2
	9.7		361.2

HOWARD AVE

366.48

30	50 W			
3	100 W			
	150 W			
	200 W			
	240 W			
4	250 W			
5	275 W			
7	300 W = E.L. ILLINOIS			
11	C. L "			
14	W. L "			

9.72 370.91 5.29 361.19

1	50 W			
2	100 W			
2	120 W			
2	150 W			
3	200 W			
	250 W			

	N.L.			5.2
	4.3	362.2		5.5
	4.8	361.7		5.7
	5.2	361.3		6.2
	5.7	360.8		6.5
	5.1	361.4		5
	5.6	360.9		6.7
	5.8	360.7		
	5.1	361.4		6.2
	5.6	360.9		5.6
	5.3	361.2		5.3

N.W. ILLINOIS & HOWARD ON HUB

	7.6	361.3		9.2
	9.2	361.7		8.9
	8.0	362.9		
	9.2	361.7		8.6
	8.5	362.4		8.4
	8.3	362.6		8.4

HOWARD AVE

370.71

30 300 W = E.L. OHIO

3 +25

+30

+40 = C.L. OHIO

+50

5 +70

5 - W.L. OHIO

7 50-W

10 75-W

12 100-W

1 110-W

2 120-W

2 150-W

2 170-W

2 190 W

3 200-W

2 2.25-W

N.L.

8.4 362.5

7.2 362.7

7.1 363.8

7.7 363.2

7.2 363.7

7.7 363.2

5.5 365.4

4.5 366.4

3.6 367.3

3.5 367.4

48

S.L.

7.7 363.2

6.9 364.0

7.5 363.4

6.4 364.5

5.4 365.5

2.9 368.0

4.0 366.9

2.7 368.2

2.4 368.5

1.7 369.2

3.2 367.7

2.0 368.9

2.7 368.0

1.9 369.0

3.5 367.4

04

HOWARD AVE.

370.91

3	250-W			
3	265-W			
	280-W			
	300-W = E.L.	30TH AS		
	+10			
4	+20			
5	+40 = C.L.	30TH AS		
7	+60			
10		W.L.	30TH AS	

10		7.15	374.43	3.63	367.28
1	15-W				
2	50-W				
2	75-W				
2	100-W				
2	125-W				
3	140-W				
	150-W				

N.L.

S.L 49

	3.5	367.4		1.3	369.6
				3.7	367.2
				4.1	366.8
	3.5	367.4		2.7	368.2
				3.9	367.0
				3.2	367.7
	3.4	367.5		3.9	367.0
	2.3	368.6			
	3.6	367.3		4.0	366.9

		N.W. COR.	HOWARD & 30TH AS		
				6.1	368.3
	7.0	367.4		7.5	366.9
				5.7	368.7
	7.0	367.4		7.4	367.0
				5.7	368.7
				7.4	367.0
	7.0	367.4		6.2	368.2

HOWARD AVE

374.43

- 39 165-W
- 3 160-W
- 190-W
- 185-W
- 200-W
- 250-W
- 5 280-W
- 300-W = E. L. KANSAS
- 115
- 12 +30
- 1 +25
- 2 +40 = C. L. KANSAS
- 2 +50
- 2 +60
- 2 +70
- 3 W. L. KANSAS

4.86 369.57

369.57
369.57
00

N. L

S. L 50

- 5.2 369.2
- 6.7 367.7
- 6.4 368.0
- 6.4 368.0
- 6.3 368.1
- 4.9 369.5
- 4.5 369.9
- 5.3 369.1
- 4.6 369.8
- 5.2 369.2
- 4.9 369.5

- 4.8 369.6
- 6.9 367.5
- 6.3 368.1
- 6.5 367.9
- 5.7 368.7
- 4.0 370.4
- 5.3 369.1
- 4.2 370.2
- 3.0 371.4
- 3.0 371.4
- 4.7 369.7
- 4.8 369.6

N. W. KANSAS & HOWARD

HOWARD AVE
374.43

20-W
40 W
50-W
70-W
90-W
100-W
110-W
120-W
140-W
150-W
160-W
175-W
190-W
200-W
210-W
220-W
240-W

N.L.

3.2 371.~
4.4 370.0
4.5 369.9
4.1 370.3
2.4 372.0
2.8 371.6
3.6 370.8

3.4 371.0
3.4 371.0
2.3 372.1
3.4 371.0
3.2 371.2
3.4 371.0

S. 51

4.5 369.9
4.4 370.0
3.1 371.3
3.8 370.6

2.1 372.3
3.7 370.7
3.5 370.9

3.4 371.0

3.5 370.9
1.3 373.1

HOWARD AVE

374.43

250-W

255-W

260-W

270-W

280-W

290-W

300-W = E.L. UTAH

4.01 377.82 0.62 373.81

+30 C.L. IDAHO

+40 = C.L. UTAH

+55

+56

+70

+75

W.L. UTAH

+10 W

35-W

N.L.

2.0 372.9

0.9 373.6

2.7 371.7

0.6 373.8

N.E. UTAH & HOWARD

5.1 372.7

4.5 373.3

5.0 372.8

3.0 374.8

2.0 375.8

4.7 373.1

S.L. 52

2.3 372.1

2.7 371.7

1.1 373.3

2.5 371.9

2.4 372.0

4.6

4.6 373.2

5.0 372.8

3.6 374.2

4.7 373.1

4.9 372.9

58

HOWARD AVE.

377.8E

50-W
 60-W
 80-W
 100-W
 115-W
 130-W
 150-W
 160-W
 175-W
 185-W
 200-W
 215-W
 240-W
 250-W
 255-W
 265-W
 280-W

N.L.

4.3 373.5

4.2 373.6

4.3 373.5

2.4 375.4

3.8 374.0

3.7 374.1

4.4 373.4

4.5 373.3

2.2 375.6

3.1 374.7

4.3 373.5

S.L.

53

4.7 373.1

3.7 374.1

4.9 372.9

4.8 373.0

4.7 373.1

3.6 374.2

4.7 373.1

4.8 373.0

4.4 373.4

3.2 374.6

4.5 373.0

88
 HOWARD AVE
 377.82
 300-W - E.L. IDAHO
 4.48 373.34 373.42
 +15
 +40 C.L. IDAHO
 W.L. IDAHO
 350-W
 100-W
 150-W
 200-W
 250-W
 300-W = E.L. OREGON
 0.08 375.14 2.76 375.06
 +15
 +25
 +40 = C.L. OREGON
 W.L. OREGON
 45-W

54
 N.L. S.L.
 44 373.4 4.7 373.1
 N.E. IDAHO & HOWARD
 3.7 374.1
 4.3 373.5 4.6 373.2
 4.1 373.5 4.3 373.5
 4.1 373.7 4.7 373.7
 3.9 373.9 4.2 373.6
 3.4 374.4 4.1 373.7
 2.8 375.0 4.2 373.6
 3.0 374.8 3.9 373.9
 3.8 374.0 3.9 373.9
 N.E. OREGON & HOWARD
 0.2 374.9 1.3
 1.3 373.8 1.3
 0.9 374.2 1.3 373.8
 1.0 374.1 2.1 373.0
 2.6 372.5

HOWARD AVE
375.14

50-W

60-W

70-W

75-W

90-W

100-W

105-W

120-W

130-W

140-W

145-W

150-W

165-W

175-W

185-W

200-W

230-W

N.L.

1.9 373.2

2.6 372.5

1.5 373.6

2.6 372.5

3.4 371.7

3.4 371.7

2.6 372.5

4.4 370.7

3.7 371.4

5.2 369.9

5.4 369.7

5.1 370.0

S.L. 55

1.9 373.2

2.0 373.1

4.3 370.8

4.2 370.9

5.1 370.0

4.3 370.8

4.7 370.4

5.8 369.3

6.4 368.7

HOWARD AVE
375.14

250W

285W

300W - E. L. CALIFORNIA

+10

+40 = C. L. CALIFORNIA

+50

0.23 363.01 12.26 362.88

W. L. CALIF

15-W

40-W

50-W

100-W

0.02 350.27 12.86 350.25

100-W

115-W

130-W

135 W

N. L.

6.6 368.5

8.6 366.5

7.2 367.9

8.5 366.6

9.8 365.3

N. W. CALIFORNIA & HOWARD

0.2 362.9

2.2 360.9

3.3 359.8

4.9 358.2

10.4 352.7

0.5 349.8

56

S. L.

7.9 367.2

7.6 367.5

9.5 365.6

11.6 363.5

12.5 362.6

3.9 359.7

4.3 358.8

8.4 354.7

0.1 350.2

0.8 349.5

3.0 347.3

5.1

HOWARD AVE.
350.27

2. 150 W

28 165 W

30 180 W

+ 200 W

+ 235 W

+ 0.10 337.50 12.87 337.40

225 W

235 W

10 250 W

4 260 W

5 280 W

10 300 W

E. L. ARIZONA

4.59 332.91

C. L. ARIZONA

W. L. ARIZONA

50 W

100 W

N. L.

3.2 347.1

6.3 344.0

10.2 340.1

11.4 338.9

1.2 336.3

2.6 334.7

3.3 334.2

4.6 332.9

N.E. ARIZONA & HOWARD ON LATH-HUB.

7.0 330.5

8.0 329.5

10.1 327.4

11.5 326.0

S. L. 57

5.1 345.2

7.6 342.7

10.7

10.9 339.4

0.6 336.9

0.7 336.8

2.5 335.0

4.2 333.3

5.7 331.8

7.5 330.0

9.1 328.4

10.2 327.3

11.5 326.0

HOWARD AVE

337.50

1	150 W			
2		0.09	325.02	12.57 324.93
3	200 W			
	250 W			
7	300 W	= E. L	TEXASNA	
4	+40	C. L	TEXAS	
	+50			
	+55			
1	+70			
4		W. L.	TEXASNA	
5	5 W			
10	25 W			
	40 W			
1	50 W			
1	60 W			
1	75 W			
1	100 W			

N.L

12.6	324.9
1.3	323.7
3.0	322.0
5.7	319.3
7.1	317.9
7.3	317.7
8.9	316.1
10.8	314.2
10.5	314.5
11.4	313.6

S.L 58

12.2	325.3
1.2	323.8
3.4	321.6
5.9	319.1
7.9	317.1
8.0	317.0
9.0	316.0
9.1	315.9
8.5	316.5
8.4	316.6
10.3	314.7
10.4	314.6
11.4	313.6
1	
11.3	313.7
13.0	312.0

HOWARD AVE.

325.93

120 W

140 W

150 W

165 W

180 W

200 W

210 W

215 W

225 W

10.54 335.09 0.47 324.55

250 W

300 W = E L LOUISIANA

+40 C. L "

+60

+75

W. L. LOUISIANA

3.79 331.30

N. L.

11.3 313.7

12.1 312.9

10.2 314.8

7.0 318.0

5.1 319.9

3.9 321.1

1.9 323.1

8.8 326.3

2.2 332.9

0.8 334.3

0.9 334.2

1.8 333.3

S.W. LOUISIANA 1 & HOWARD ON HUB

S. L. 59

12.2 312.8

11.7 313.3

11.2 313.8

5.9 319.1

4.7 320.3

8.3 326.8

3.0 332.1

2.4 332.7

1.8 333.3

3.8 331.3

HOWARD AVE

335.09

5 W

20 W

30 W

50 W

75 W

90 W

100 W

120 W

130 W

135 W

150 W

200 W

0.27 322.40 12.96 322.13

150 W

165 W

200 W

240 W

N.L.

2.2 332.9

1.8 333.3

3.6 331.5

4.5 330.6

6.6 328.5

6.8 328.3

8.6 326.5

8.2 326.9

10.4 324.7

12.2 322.9

1.2 321.2

S.L. 60

3.0 332.1

5.7 329.4

8.1 327.0

8.6 326.5

0.6 321.8

1.2 321.2

0.5 321.9

3.6 318.8

HOWARD AVE.

322.40

250W

265W

275W

280W

295W

300W

E. L. MISSISSA

1.84 320.56

$\frac{320.01}{320.56}$
78

+20

+10

+35

+40

C. L. MISSISSA

+65

+75

W. L. MISSISSA

10 W

15 W

30 W

N. L.

0.6 321.8

0.2 322.2

2.5 319.9

N. E. MISSISSA & HOWARD ON HUB

2.2 320.2

4.9 317.5

4.2 318.2

3.9 318.5

6.6 315.8

7.2 315.2

6.0 316.4

S. L. 61

4.0 318.4

4.8 317.6

4.1 318.3

4.6 317.8

4.9 317.5

5.9 316.5

5.4 317.0

5.2 317.2

6.7

6.7 315.7

8.6 313.8

9.4 313.0

HOWARD AVE

322.40

40 W

50 W

75 W

70 W

100 W

12/12/05

0.24 309.68 12.96 309.44

100 W

115 W

150 W

170 W

185 W

200 W

210 W

230 W

250 W

0.10 296.95 12.83 296.95

280 W

N.L

8.5 313.9

8.1 314.5

10.1 312.3

11.3 311.1

+ 0.5 310.2

3.6 306.1

5.1 304.6

8.5 301.2

12.3 297.4

S.L

62

9.2 313.2

11.4 311.0

0.7 309.0

4.5 305.2

6.9 302.8

9.2 300.5

10.6 299.1

10.5 299.2

12.2 297.5

2.4 294.6

HOWARD AVE.

296.95

275 W

290 W

"

2.22 294.73

300 W = E.L ALABAMA.

+40 C.L "

+45

+50

+55

+70

W.L. ALABAMA.

20 W

50 W

100 W

150 W

200 W

225 W

215 W

N.L.

1.7 295.3

1.4 295.6

2.2 294.8

2.9 294.1

4.4 292.6

3.0 294.0

3.5 293.5

4.0 293.0

5.9 291.1

7.7 289.3

9.3 287.7

11.2 285.8

12.5 284.5

S.L 63

4.2 292.8

6.0 291.6

5.6 291.4

6.8 290.2

7.4 289.6

7.8 289.2

9.1 287.9

11.4 285.6

12.4 284.6

13.3 283.7

12.2

HOWARD ST

296.95

240 W

250 W

275 W

290 W

300 W = E.L. FLORIDA

+30

+32

+40 = C.L. FLORIDA

+60

+65

+66

+70

W.L. FLORIDA

0. 3.39 293.56

12.61 309.52 0.04 296.91

50 W

65 W

S.L

N.L

10.3 286.7

9.5 287.5

7.4

7.4 287.6

7.3 289.7

6.7 290.3

5.6 291.4

5.0 292.0

5.3 291.7

4.4 292.6

3.4 293.6

N.W. FLORIDA & HOWARD ON HUB

10.3 299.2

8.5 301.0

12.2 284.8

11.7 285.3

8.6 288.4

5.3 291.7

4.8 292.2

5.0 292.0

3.7 293.3

2.5 294.5

12.2 297.3

HOWARD AVE.

.309.52

100 W

150 W

175 W

200 W

12.95 322.03 0.44 309.08

250 W

260 W

300 W = E. L. GEORGIA.

+40 C. L. "

+75

+70

+80 W. L. GEORGIA

3.89 318.14

50 W

12.97 335.01 + 0.01 322.04

W. L. GEORGIA

50 W

65

N. L

S. L

8.5 301.0

9.5 300.0

6.3 303.2

6.3 303.2

5.2 304.3

2.3 307.2

2.0 307.5

12.2 309.8

9.7 312.3

8.3 313.7

9.3 312.7

7.1 314.9

7.2 314.8

4.2 317.6

1.0 321.0

5.6 316.4

3.9 318.1

N. W. GEORGIA & HOWARD

0.6 321.4

11.5

11.5 323.5

6.9 328.1

HOWARD AVE

335.01

100 W

135 W

140 W

150 W

160 W

195 W

200 W

220 W

250 W

11.52 346.39 0.14 334.97

295 W

270 W

295 W

300 W = E. L. PARK

8.57 337.92

337.84
337.82
02

N. L.

8.1 326.9

6.1 328.9

4.8 330.2

4.8 330.2

3.4 331.6

2.3 332.7

0.9 334.1

0.6 334.4

10.0 336.4

9.2 337.2

N. E. POLK & PARK ON HUB.

S. L. 66

3.1 331.9

1.8 333.2

1.3 333.7

0.6 334.4

1.5 333.5

10.5 335.9

9.4 337.0

7.9 338.5

MEADE
JACKSON AVE.

{ COVERT. ARIZONA - BOUNDARY.
BROOKES
MOORE 12/14/05

B.1 12.89 358.70 346.01

E. L. ARIZONA

10 E

25 E

50 E

65 E

100 E

125 E

12.91 371.42 0.39 358.51

140 E

150 E

170 E

185 E

200 E

210 E

225 E

N. L.

SL 67

N.W. JACKSON & ARIZONA. ON HUB.

12.9 345.8

13.4 345.3

13.3 345.4

11.5 347.2

9.6 349.1

10.9 347.8

7.9 351.7

8.2 350.5

4.5 354.2

3.9 354.8

1.4 357.3

11.4 360.0

11.1 360.3

10.9 360.5

10.1 361.3

8.2 363.2

8.2 362.2

8.0 363.4

7.9 363.5

5.1 366.3

4.8 366.6

3.9 367.5

4.6 364.8

	JACKSON ST.			
	371.42			
235 E				
250 E				
260 E				
275 E				
300 E	W. L. CALIF			
	10.74	381.38	0.78	370.64
+20	C. L. CALIF			
+40	C. L. CALIF			
+60				
	E. L. CALIF			
10-E.				
20 E				
30 E				
40 E				
50 E				
60 E				
65 E				

	N. L.		68
			S. L.
4.7	366.5		
3.3	368.1	3.0	368.4
		1.3	370.1
0.4	371.0	2.2	369.2
0.8	370.6	0.9	370.5
	N. W. CALIF. & JACKSON		
7.9	373.5		
8.8	372.6	9.5	371.9
7.8	373.6		
8.5	372.9	8.2	373.2
		7.9	373.5
6.2	375.2		
		6.6	374.8
7.6	373.8		
6.5	374.9	7.3	374.1
5.3	376.1		
		6.3	375.1

JACKSON ST.

381.38
~~10.08~~
 372.16

80 E.

90 E

100 E.

125 E

150 E

175 E

200 E

210 E

225 E

250 E

275 E

300 E = W. L. OREGON.

+40 C. L. "

+59

+60

+70

E. L. OREGON

69

H. L.

S. L.

7.2 374.2

5.8 375.6

6.1 375.3

6.2 375.2

5.1 376.3

5.6 375.8

4.8 376.6

5.3 376.1

4.9 376.5

4.5 376.9

7.0 374.4

6.0 375.4

6.9 374.5

6.0 375.4

5.7 375.7

5.6 375.8

4.1 377.3

5.2 376.2

4.8 376.5

5.4 376.0

3.8 377.6

5.2 376.2

5.2 376.2

JACKSON AVE

381.38

5.10 376.28

10-E

20 E

35 E

45 E

50 E

60 E

85 E

100 E

120 E

150 E

160 E

175 E

200 E

210 E

250 E

250 E

N.L

S.L 70

N.E. OREGON & JACKSON ON HUB

5.2 376.2

4.3 377.1

5.2 376.2

4.9 376.5

3.3 378.1

5.1 376.3

4.0 377.4

5.1 376.3

5.2 376.2

4.3 377.1

5.5 375.9

5.2 376.2

4.4 377.0

4.7 376.7

4.0 377.4

4.4 377.0

5.0 376.4

4.5 376.9

5.3 376.1

5.1 376.3

4.6 376.8

5.0 375.8

5.0 375.8

5.3 376.1

3.0 377.8

JACKSON AVE

381.38

285 E
 300 E = E.L. IDAHO
 +15
 +25
 +27
 +40 = C.L. IDAHO
 +59
 +60
 E.L. IDAHO
 1.90 377.23 6.05 375.33
 30-E
 40-E
 50 E
 55 E
 70 E
 85 E
 100 E

N.L

4.6

5.4 376.0

4.9 376.5

6.0 375.4

N.E JACKSON & IDAHO

2.3 374.9

1.1 376.1

2.5 374.7

1.9 375.3

71

S.L

5.9 375.5

5.7 375.7

3.8 377.6

4.0 377.4

6.0 375.4

5.2 376.2

6.3 375.1

5.2 376.2

5.9 375.5

1.8 375.4

0.9 376.3

1.6 375.6

2.3 374.9

1.0 376.2

1.7 375.5

JACKSON AVE

377.23

110 E			
125 E			
150 E			
170 E			
200 E			
220 E			
245 E			
235 E			
250 E			
260 E			
280 E			
	5.49	372.42	10.30 366.93
300 E =	W.L.	UTAH	
3+10 1			
+35			
+25			
+40 =	C.L.	UTAH	

N.L.

S.L. 72

		3.3	373.9
4.4	372.8		
5.2	372.0	2.6	374.6
		5.0	772.2
6.7	370.5	6.7	370.5
7.9	369.3	6.3	370.9
7.1	370.1		
		7.7	369.3
7.4	369.8	7.1	370.1
		7.6	369.6
		7.7	369.5
	N.W. COR JACKSON - UTAH		
5.5	366.9	4.8	367.6
		4.6	367.8
		2.7	369.7
3.3	369.1		
5.0	367.4	3.2	369.2

JACKSON AVE.

372.42.

+45

+60

+65

E. L. UTAH

50 E

80 E

95-E

100 E

105 E

125 E

135-E

145-E

150 E

160 E

175-E

200 E

230 E

N.L

5.8 366.6

4.6 367.8

6.1 366.3

6.1 366.3

6.7 365.7

5.1 367.3

6.6 365.8

6.8 365.6

6.9 365.5

S. L

73

5.6 366.8

6.1 366.3

6.4 366.0

6.7 365.7

5.5 366.7

6.0 366.4

6.8 365.6

6.9 365.5

5.9 366.5

5.0 367.4

7.0 365.4

6.9 365.5

7.0 365.4

JACKSON AVE.

372.42

225 E

240 E

250 E

260 E

270 E

300 E = W. L. KANSAS

+20

+25

+40 = C. L. KANSAS

E. L. KANSAS

7.25 365.17

25-E

30 E

50 E

100 E

130 E

150 E

H. L.

5.5 366.9

6.9 365.5

5.9 366.5

5.0 367.4

7.4 365.0

7.4 365.0

5.9 366.5

7.1 365.3

7.3 365.1

N. E. KANSAS & JACKSON

7.2 365.2

7.4 365.0

7.4 365.0

7.0 365.0

S. L. 74

5.2 367.2

7.2 365.2

7.1 365.3

4.6 367.8

7.4 365.0

7.5 364.9

6.4 366.0

7.4 365.0

7.5 364.9

7.5 364.9

7.7 364.7

JACKSON AVE

372.42

180 E

200 E

240 E

250 E

265 E

275 E

290 E

300 E = P.V. L. 30TH

+30

+40 = C.L. 30TH.

+55

+70

E. L. 30TH

0.77 370.63 2.56 369.86

3.40 370.72 3.40 367.32

8.90 378.91 0.77 369.95

30 E

N.L.

5.7 366.7

7.3 365.1

7.2 365.2

5.7 366.7

3.6 368.8

6.1 366.3

5.7 366.7

5.1 367.3

3.5 369.9

3.8 368.6

2.6 369.8

N. E. 30TH & JACKSON

S. W. 30TH & EL. CAJON

10.2 368.7

S. L. 75

7.4 364.0

7.7 364.7

7.3 365.1

5.7 366.7

7.4 365.0

7.0 365.4

5.2 367.2

6.3 366.1

6.0 366.4

11.5 367.4

JACKSON AVE

378.91

40 E

50 E

65 E

80 E

90 E

100 E

125 E

140 E

150 E

160 E

180 E

200 E

220 E

230 E

250 E

260 E

275 E

N. L

7.9 369.0

8.6 370.3

7.4 369.5

7.4 371.5

9.5 369.4

9.2 369.7

7.4 371.5

8.1 370.8

7.2 371.7

6.0 372.9

6.9 372.0

5.9 373.0

4.8 374.1

6.2 372.7

S. L 76

9.7 369.2

11.3 367.6

10.9 368.0

9.9 369.0

10.3 368.6

9.5 369.4

9.2 369.7

6.4 372.5

7.8 371.1

7.4 371.5

6

JACKSON AVE.
378.91

290 E

7.55 371.36

300 E = W. L. OHIO

+25

+10

+30

+40

+45

+60

+65

E. L. OHIO

10 E

35 E

50 E

60 E

85 E

100 E

N. L.

S. L.

S. L.

??

6.0 372.9

4.0 374.9

5.2 373.7

3.5 375.4

4.9 374.0

4.9 374.0

3.6 376.3

2.2 376.7

7.5 371.4

7.5 371.4

4.6 374.3

5.4 373.5

6.3 372.6

6.2 372.7

4.0 374.9

3.8 375.1

6.3 372.6

2.9 376.0

1.4 377.5

4.6 374.3

4.0 374.9

JACKSON AVE
378.91

125 E

150 E

180 E

200 E

9.80 387.12 1.59 377.32

220 E

215 E

235 E

250 E

275 E

295 E

300 E = W.L. ILLINOIS.

+5

+25

+30

+40 C.L. ILLINOIS

+60

N.L

11.8 377.1

0.0 378.9

7.8 379.3

6.0 381.1

6.9 380.2

7.1 380.0

5.4 381.7

6.4 380.7

6.3 380.8

4.4 382.7

S.L

2.7 376.2

2.7 376.2

3.3 375.6

0.0 378.9

9.8 377.3

8.6 378.5

7.0 380.1

5.0 379.1

7.2 379.9

6.4 380.7

7.4 379.7

6.8 380.3

4.5 382.6

780

JACKSON AVE

397.12

E. L. ILLINOIS

5.97 391.14

25 E

50 E

65 E

75 E

90 E

100 E

135 E

150 E

165 E

190 E

200 E

210 E

220 E

240 E

250 E

N. L.

S. L.

79 0

6.7 380.4

N. E. ILLINOIS & JACKSON

4.8 382.3

5.3 381.8

5.2 381.9

3.5 383.6

4.7 382.4

4.6 382.5

4.1 383.0

2.8 384.3

3.6 383.5

3.9 383.2

6.7 380.4

5.7 381.4

5.7 381.4

4.3 382.8

5.1 382.0

5.1 382.0

2.8 384.3

4.8 382.3

4.7 382.4

3.9 383.2

4.8 382.3

4.3 382.8

3.3 383.8

JACKSON AVE

3.8712

270 E

280 E

285 E

300 E = W.L. IOWA

341.5 E W.L. BOUNDARY

350 E

364.4 W.L. BOUNDARY

3.48 384.12 6.48 380.64

378.34

5.80 378.32

WEST BOOK

N.L

S.L

80

4.4 382.7

3.1 384.0

2.6 384.5

4.1 383.0

4.3 382.8

4.0 383.1

4.2 382.9

3.2 383.9

N.E. EL CAJON & BOUNDARY

- 316.21 - S.W. GEORGIA & EL CAJON SPIKE IN
POLE.
- 367.32 - {S.W. EL CAJON & 30TH
SPIKE IN PHONE POLE.
- 365.12 N.W. EL CAJON & OHIO - HUB.
- 366.51 N.W. EL CAJON & ILLINOIS - HUB.
- 378.31 N.E. EL CAJON & BOUNDARY
SPIKE IN PHONE POLE.
- 355.58 N.W. MISSOURI & POLK - HUB.
- 342.65 N.W. MISSOURI & LINCOLN - HUB.
- 351.89 {S.E. MISSOURI & UNIVERSITY
3 NAILS IN PHONE POLE.
- 362.55 N.W. IOWA & LINCOLN - HUB.
- 356.77 N.E. IOWA & POLK - HUB.
- 362.62 N.E. IOWA & HOWARD - HUB.
- 382.94 N.W. IOWA & JACKSON - HUB.
- 390.03 {S.W. ILLINOIS & MADISON
△ WHITE STAKE
- 385.35 S.E. ILLINOIS & MONROE - HUB.
- 361.17 N.W. ILLINOIS & HOWARD - HUB.
- 363.05 - S.W. ILLINOIS & LINCOLN - HUB.
- 344.79 - S.W. LINCOLN & WISCONSIN - HUB.
- 340.08 - N.E. SPIKE IN NEW PHONE POLE.

316.21
5.85
316.12

Degrees.
89
88
87
86
85
84
83
82
81
80
79
78
77
76
75
74
73
72
71
70
69
68
67
66
65
64
63
62
61
60
59
58
57
56
55
54
53
52
51
50
49
48
47
46
45
Degrees.
Minutes,

3205
436
367.41 3640
227
364.15

12.89
12.91 0.39
10.74 0.78
1.90 6.05
38.44 10.30
34632 17.52 17.52
20.92
346.01
36 0.93
26
225
11.5
32
15.4

190

TRAVERSE TABLE FOR TRANSIT BOOK.

From 1° to 90° for a distance of 100.

Degrees.	DEGREES.		¼ DEGREE.		½ DEGREE.		¾ DEGREE.		Degrees.
	Lat.	Dep.	Lat.	Dep.	Lat.	Dep.	Lat.	Dep.	
0			100.00	0.44	100.00	0.87	99.99	1.31	89
1	99.98	1.75	99.98	2.18	99.97	2.62	99.95	3.05	88
2	99.94	3.49	99.92	3.93	99.91	4.36	99.88	4.80	87
3	99.86	5.23	99.84	5.67	99.81	6.10	99.79	6.54	86
4	99.76	6.98	99.73	7.41	99.69	7.85	99.66	8.28	85
5	99.62	8.72	99.58	9.15	99.54	9.58	99.50	10.02	84
6	99.45	10.45	99.41	10.89	99.36	11.32	99.31	11.75	83
7	99.25	12.19	99.20	12.62	99.14	13.05	99.09	13.49	82
8	99.03	13.92	98.97	14.35	98.90	14.78	98.84	15.21	81
9	98.77	15.64	98.70	16.07	98.63	16.50	98.56	16.93	80
10	98.48	17.36	98.40	17.79	98.33	18.22	98.25	18.65	79
11	98.16	19.08	98.08	19.51	97.99	19.94	97.90	20.36	78
12	97.81	20.79	97.72	21.22	97.63	21.64	97.53	22.07	77
13	97.44	22.50	97.34	22.92	97.24	23.34	97.13	23.77	76
14	97.03	24.19	96.92	24.62	96.81	25.04	96.70	25.46	75
15	96.59	25.88	96.48	26.00	96.36	26.72	96.25	27.14	74
16	96.13	27.56	96.00	27.98	95.88	28.40	95.76	28.82	73
17	95.63	29.24	95.50	29.65	95.37	30.07	95.24	30.49	72
18	95.11	30.90	94.97	31.32	94.83	31.73	94.69	32.14	71
19	94.55	32.56	94.41	32.97	94.26	33.38	94.12	33.79	70
20	93.97	34.20	93.82	34.61	93.67	35.02	93.51	35.43	69
21	93.36	35.84	93.20	36.24	93.04	36.65	92.88	37.06	68
22	92.72	37.46	92.55	37.86	92.39	38.27	92.22	38.67	67
23	92.05	39.07	91.88	39.47	91.71	39.87	91.53	40.27	66
24	91.35	40.67	91.18	41.07	91.00	41.47	90.81	41.87	65
25	90.63	42.26	90.45	42.66	90.26	43.05	90.07	43.44	64
26	89.88	43.84	89.69	44.23	89.49	44.62	89.30	45.01	63
27	89.10	45.40	88.90	45.79	88.70	46.17	88.50	46.56	62
28	88.29	46.95	88.09	47.33	87.88	47.72	87.67	48.10	61
29	87.46	48.48	87.25	48.86	87.04	49.24	86.82	49.62	60
30	86.60	50.00	86.38	50.38	86.16	50.75	85.94	51.13	59
31	85.72	51.50	85.49	51.88	85.26	52.25	85.04	52.62	58
32	84.80	52.99	84.57	53.36	84.34	53.73	84.10	54.10	57
33	83.87	54.46	83.63	54.83	83.39	55.19	83.15	55.56	56
34	82.90	55.92	82.66	56.28	82.41	56.64	82.16	57.00	55
35	81.92	57.36	81.66	57.71	81.41	58.07	81.16	58.42	54
36	80.90	58.78	80.64	59.13	80.39	59.48	80.13	59.83	53
37	79.86	60.18	79.60	60.53	79.34	60.88	79.07	61.22	52
38	78.80	61.57	78.53	61.91	78.26	62.25	77.99	62.59	51
39	77.71	62.93	77.44	63.27	77.16	63.61	76.88	63.94	50
40	76.60	64.28	76.32	64.61	76.04	64.94	75.76	65.28	49
41	75.47	65.61	75.18	65.93	74.90	66.26	74.61	66.59	48
42	74.31	66.91	74.02	67.24	73.73	67.56	73.43	67.88	47
43	73.14	68.20	72.84	68.52	72.54	68.84	72.24	69.15	46
44	71.93	69.47	71.63	69.78	71.33	70.09	71.02	70.40	45
45	70.71	70.71							
Degrees.	Dep.	Lat.	Dep.	Lat.	Dep.	Lat.	Dep.	Lat.	Degrees.
	DEGREES.		¼ DEGREE.		½ DEGREE.		¾ DEGREE.		

Published by H. S. CROCKER COMPANY, Stationers, Drawing Materials, Mathematical Instruments, etc., San Francisco.