

TALMADGE PARK ESTATES 103
 UNIT NO. 4
 2750
 See Sheet 103-A

CITY
 COUNTY

PARTITION OF RANCHO
 MISSION OF SAN DIEGO
 Partion of Lot 23
 Map 1900 shows
 Ord. 1211 (N.S.)
 Dec. 3, 1925

201

ESTATES

ENCLOSURE

93

92

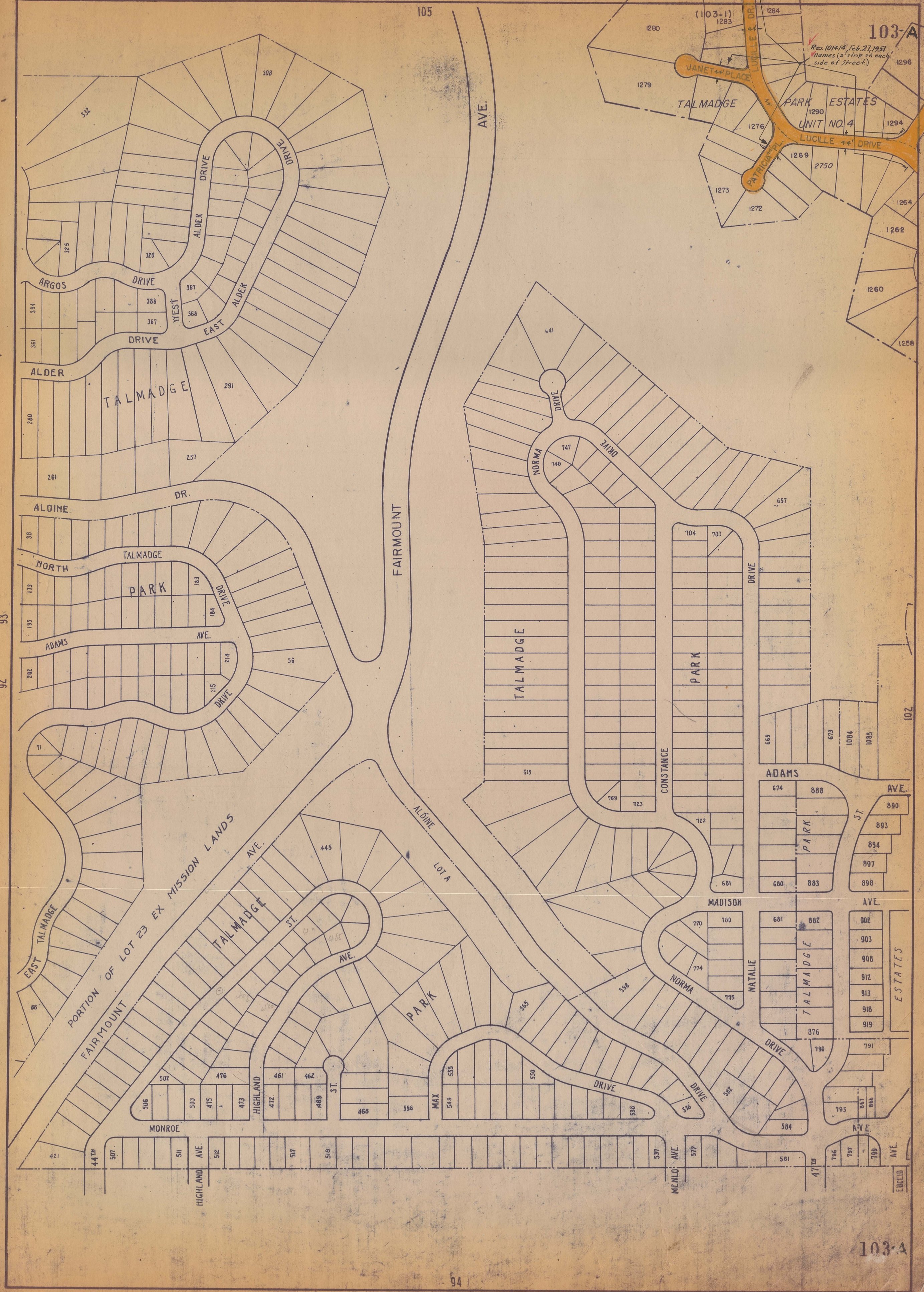
105

108-A

103

Check of street names completed Sept. 10, 1932. J. L. M.
 J. A. T.

94



103-A

103-A

92
93

105

94

102

103

N



Res. 101414, Feb. 21, 1991
games, (8' strip on each side
of street)

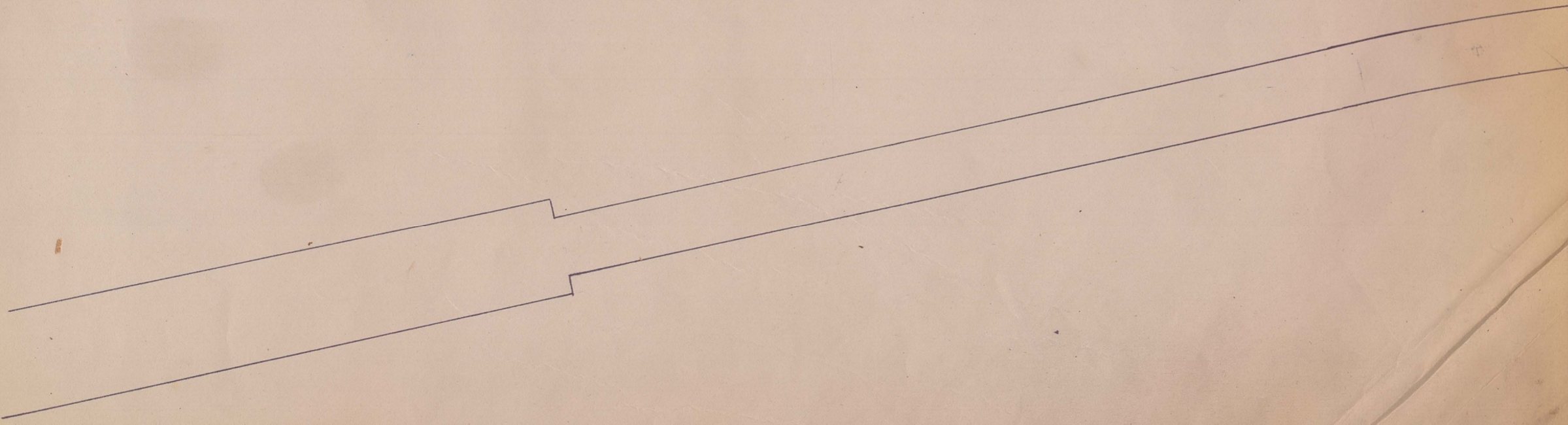
103-2

Z

(102-2)

(103-1)

103-2



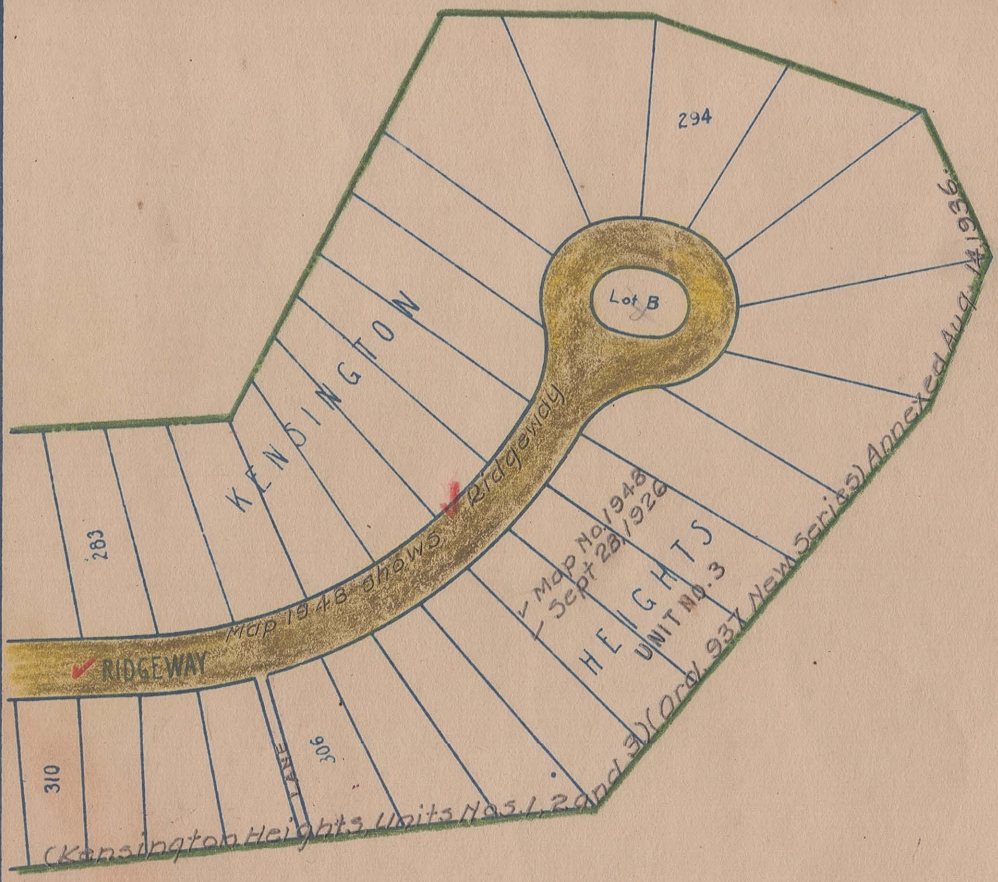
N

COUNTY



Check of street names completed July 27, 1932. J. L. M.

J. A. T.

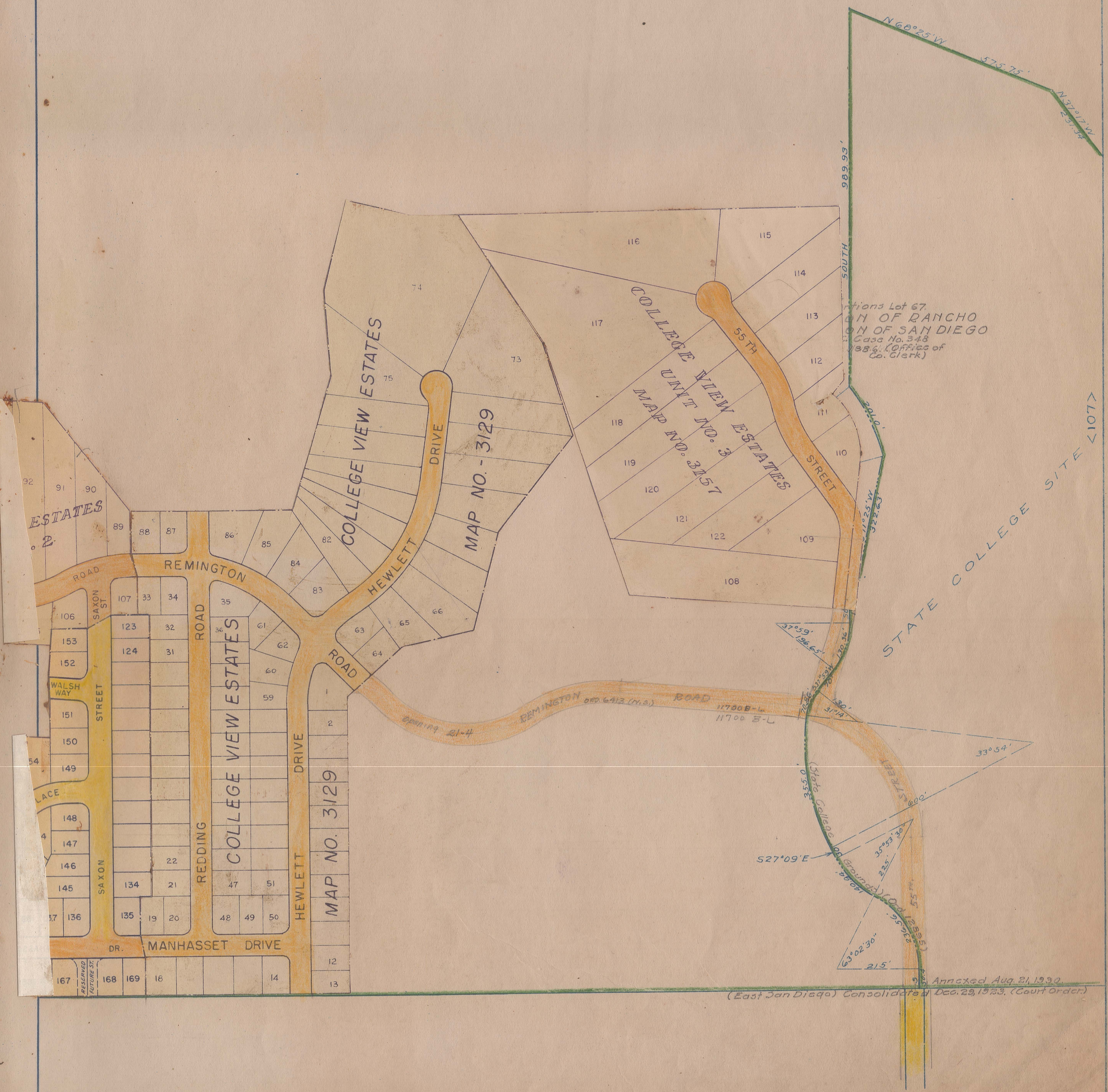


COUNTY
 ANNEXATION
 GRANTVILLE - RANCHO MISSION TRACT
 ORD. 6449 (N.S.) adopted Mar. 17, 1955
 EFFECTIVE DATE April 18, 1955.
 (SEE DWG. No. 11362-L)



Check of street names completed Sept. 10, 1932. J. L. M.
 J.A.T.

108-A



Annexed Aug 21, 1932.
 (East San Diego) Consolidated by Dec. 23, 1933, (Court Order).

< 108 >

Check of street names completed Sept. 10, 1932. J. L. M.
 J. A. T.

< 108 >



Check of street names completed Sept. 10, 1932. J. L. M.
J. A. T.

(Esp. 10 + 1192) 1831, 1832, Dec. 23, 1833 (La Mesa Colony) Ord. 10778 Annexed Oct. Dec. 25, 1854.