

Historical Resources Board

October 23, 2014



HOMER MCCLURE BUILDING

716 16TH STREET

ITEM 5



HOMER MCCLURE BUILDING

716 16TH STREET

ITEM 5



HOMER MCCLURE BUILDING

716 16TH STREET

ITEM 5



HOMER MCCLURE BUILDING

716 16TH STREET

ITEM 5

STAFF RECOMMENDATION:

Designate the Homer McClure Building located at 716 16th Street as a historical resource with a period of significance of 1947 under HRB Criterion C.



1320 MUIRLANDS DRIVE

ITEM 6



ITEM 6

1320 MUIRLANDS DRIVE



ITEM 6

1320 MUIRLANDS DRIVE

STAFF RECOMMENDATION:

Do not designate the property located at 1320 Muirlands Drive under any adopted HRB Criteria.



SAN DIEGO FIRE DEPARTMENT SHOPS AT STATION 6 (HRB 251) **ITEM 7** 1572 COLUMBIA STREET



**SAN DIEGO FIRE DEPARTMENT
SHOPS AT FIRE STATION 6
1572 COLUMBIA STREET**

ITEM 7

STAFF RECOMMENDATION:

Recommend the listing of the San Diego Fire Department Shops at Station 6 to the California State Office of Historic Preservation.



AGNES MOSHER HOUSE

1511 29TH STREET

ITEM 8



AGNES MOSHER HOUSE

1511 29TH STREET

ITEM 8



AGNES MOSHER HOUSE

1511 29TH STREET

ITEM 8



AGNES MOSHER HOUSE

1511 29TH STREET

ITEM 8

STAFF RECOMMENDATION:

Designate the Agnes Mosher House located at 1511 29th Street as a historical resource with a period of significance of 1912 under HRB Criterion C. The designation excludes the 1943 second story rear addition.



405 BELVEDERE STREET

ITEM 9



ITEM 9

405 BELVEDERE STREET



ITEM 9

405 BELVEDERE STREET



ITEM 9

405 BELVEDERE STREET

STAFF RECOMMENDATION:

Do not designate the property located at 405 Belvedere Street under any adopted HRB Criteria due to a lack of historical significance, a sufficient degree of integrity, or association with an established master architect, builder or designer.



F.K. PACK SPECULATION HOUSE

4668 EAST TALMADGE DRIVE

ITEM 10



F.K. PACK SPECULATION HOUSE

4668 EAST TALMADGE DRIVE

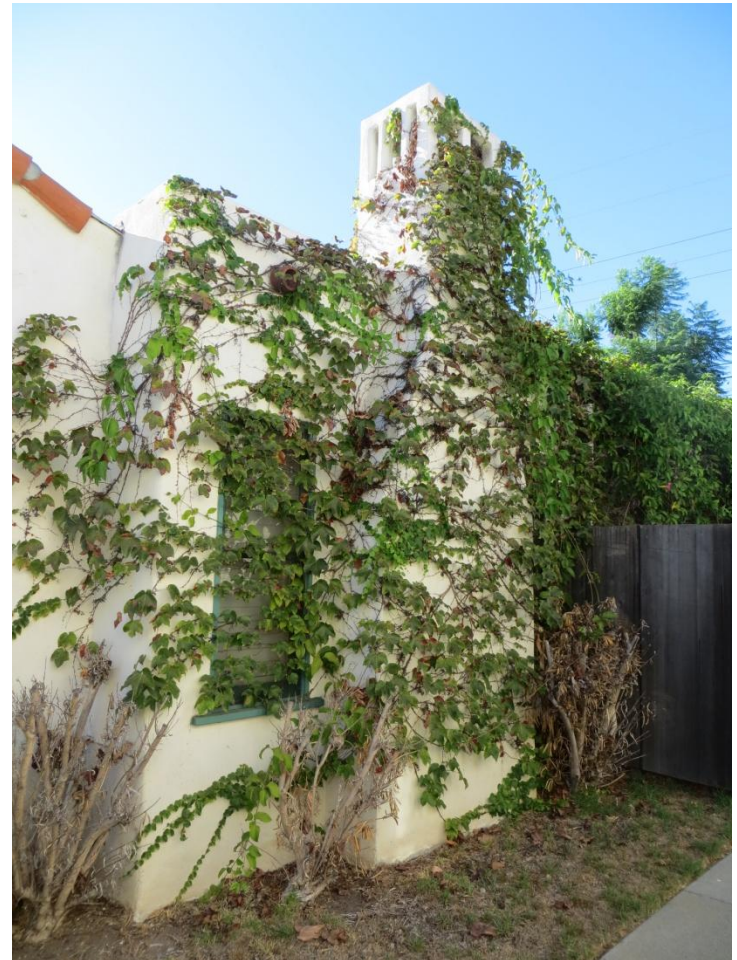
ITEM 10



F.K. PACK SPECULATION HOUSE

4668 EAST TALMADGE DRIVE

ITEM 10



F.K. PACK SPECULATION HOUSE

4668 EAST TALMADGE DRIVE

STAFF RECOMMENDATION:

ITEM 10

Designate the F.K. Pack Speculation House located at 4668 East Talmadge Drive as a historical resource with a period of significance of 1928 under HRB Criterion C.

The designation excludes the second story addition at the northwest corner of the house and the east side addition at the patio area.



**ALFRED AND HELEN CANTONI/
RALPH L. FRANK AND WILLIAM
B. MELHORN HOUSE
2412 PINE STREET**

ITEM 11



**ALFRED AND HELEN CANTONI/
RALPH L. FRANK AND WILLIAM
B. MELHORN HOUSE
2412 PINE STREET**

ITEM 11



**ALFRED AND HELEN CANTONI/
RALPH L. FRANK AND WILLIAM
B. MELHORN HOUSE
2412 PINE STREET**

ITEM 11



**ALFRED AND HELEN CANTONI/
RALPH L. FRANK AND WILLIAM
B. MELHORN HOUSE**

2412 PINE STREET

STAFF RECOMMENDATION:

ITEM 11

Designate the Alfred and Helen Cantoni/Ralph L. Frank and William B. Melhorn House located at 2412 Pine Street as a historical resource with a period of significance of 1964 under HRB Criteria C and D.



**EVA HILL AND PANTAGES, MILLS &
SHREVE COMPANY SPEC HOUSE #1
1007 CORDOVA STREET**

ITEM 12



EVA HILL AND PANTAGES, MILLS & SHREVE COMPANY SPEC HOUSE #1 1007 CORDOVA STREET

ITEM 12



**EVA HILL AND PANTAGES, MILLS
& SHREVE COMPANY SPEC
HOUSE #1**

1007 CORDOVA STREET

STAFF RECOMMENDATION:

ITEM 12

Designate the Eva Hill and Pantages, Mills & Shreve Company Spec House #1 located at 1007 Cordova Street as a historical resource with a period of significance of 1927 under HRB Criteria A and C.

The designation excludes the 425 square foot rear addition and the 1,096 square foot detached garage with guest quarters above.



Historical Resources Board

October 23, 2014

