

Parks and Recreation Department

Gas Tax Median Maintenance Program

Parks and Recreation Board

February 20, 2025

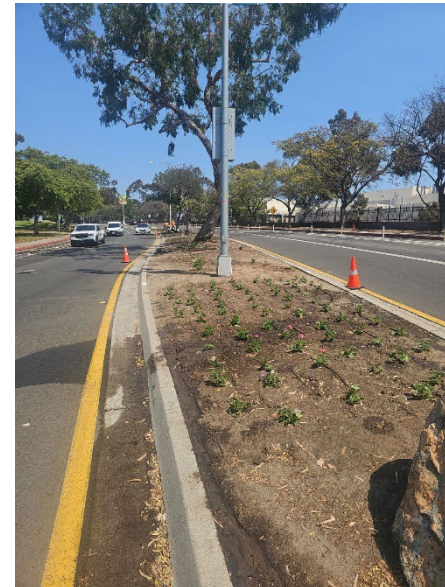
Information Item #201

Erika Ferreira, Deputy Director



Gas Tax Median Maintenance Program

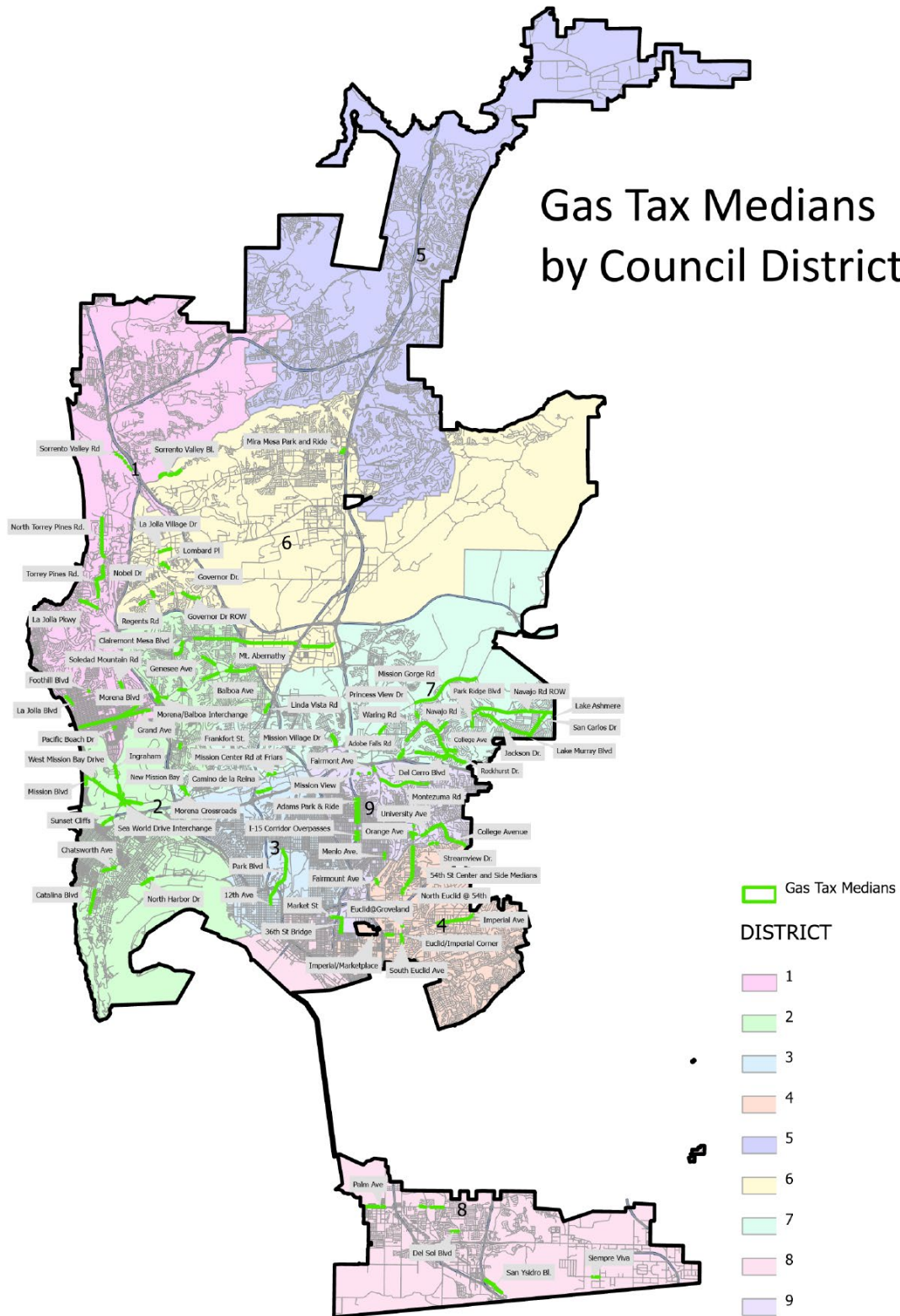
- The Gas Tax Median Maintenance Program, includes maintenance of over 300 medians and rights of way (ROW) throughout the City of San Diego for the purpose of providing safe, attractive, and usable spaces. Services include:
 - Irrigation
 - Shaping and training of trees, shrubs, turf, and groundcover plants
 - Fertilization
 - Litter and weed control
 - Control of all plant diseases and pests
 - Mowing
 - Edging
 - Hardscape maintenance
 - Street and gutter sweeping



History

- Prior to 2008 the City Manager initiated median additions
- With the exception of 2024, no new medians have been added since 2009
- Currently staff receive requests via:
 - Developers
 - Engineering and Capital Projects
 - Other sponsored median projects (i.e. Caltrans, SanDag)
- Other types of maintenance arms:
 - Maintenance Assessment Districts (MAD)
 - Encroachment Maintenance Removal Agreement (EMRA)

Gas Tax Medians by Council District



Gas Tax
Medians
by Council
District

	Medians	ROW
CD1	36	6
CD2	38	18
CD3	11	2
CD4	21	15
CD5	0	0
CD6	23	6
CD7	64	18
CD8	7	9
CD9	18	28
Total	220	98

Gas Tax Median Maintenance Program

- Funding is provided by Gas Tax Funds
- Minimal General Fund Contribution
- Staffed by two Grounds Maintenance Managers
- Work is performed by a contractor
- Frequency of maintenance



Gas Tax Median Maintenance

- Tree Maintenance
 - Trimming above 6'
 - Removal
 - Planting



Newly Added Gas Tax Medians

- Newly added medians include
 - Newly built stormwater catch basin
 - Undermaintained medians

- Square Footage Increased by 30%
 - Existing Medians 3.2 million sq ft
 - Added Medians 1.1 million sq ft

- Sweeping Increased by 75%
 - Existing Gutter 443,000 In ft
 - Added Gutter 643,000 In ft

DISTRICT 2
Sea World Dr. Interchange
Ingraham St.
West Mission Bay Dr.
Sea World Dr. K-Rail – Street Sweeper (Mobile)
Mt. Abernathy
DISTRICT 3
Park Blvd
Uptown Bikeway – 4 th -5 th Ave.
DISTRICT 4
Imperial Ave. Bike Lane
DISTRICT 9
Thorn St.
Orange Ave. Bike Lane

Increased Frequency of Service

- Increased Frequency was due to:
 - Infrequent visits and inspections
 - Water leaks resulting in loss of water
 - Trash and debris build up

- Monthly to Bi-Weekly

DISTRICT 4	DISTRICT 9
South Euclid	I-15 Corridors – All side medians
North Euclid	I-15 Corridors – Corridor overpasses
	Adams Park & Ride
	Ridgeway Circle
	Mission View
	Market Street- I15 to 33 rd St.
	Imperial Ave. – 47 th - 49 th and 61 st -FlickerSt.
	36 th St. Bridge

Increased Frequency of Service

- Quarterly to Bi-Monthly

DISTRICT 1	DISTRICT 7
Soledad Mountain Rd.	Rockhurst Dr.
Pacific Beach Dr.	Elmhurst Ave.
Sorrento Valley Blvd.	Morena Blvd.
	Mission Village Rd.
DISTRICT 2	Navajo Rd. at Waring
Frankfort Street	Navajo Rd.- ROW
	Princes View Dr.
DISTRICT 4	DISTRICT 9
Euclid/Imperial	Menlo Ave.
Euclid at Groveland – ROW at Groveland	Fairmont Ave.
54 TH St. – Slope westside ROW	Orange Ave.
54 th St. – Center and side medians	University Ave. ROW
DISTRICT 6	
Governor Drive – North ROW	
Governor Drive – Landscape Medians	

Gas Tax Median Maintenance Program





Questions