

FOCUS AREA 7

COUNCIL DISTRICTS 1, 2

	POPULATION	FOCUS AREA: 23,000 CITY OF SAN DIEGO: 1,386,300
	MEDIAN HOUSEHOLD INCOME	FOCUS AREA: \$85,000 CITY OF SAN DIEGO: \$88,000
	MEDIAN AGE	FOCUS AREA: 32 CITY OF SAN DIEGO: 36
	PERCENTAGE OF WORKERS DRIVING ALONE	FOCUS AREA: 69% CITY OF SAN DIEGO: 69%
	PERCENTAGE OF HOUSEHOLDS WITH NO VEHICLE	FOCUS AREA: 3% CITY OF SAN DIEGO: 6%

OVERVIEW

Focus Area 7 is mostly within Pacific Beach centered along the parallel east-west streets of Grand Avenue and Garnet Avenue along with a small portion of Clairemont just east of Interstate 5. Garnet Avenue is Pacific Beach's main commercial corridor with a mix of pedestrian-oriented businesses and businesses with surface parking lots. Grand Avenue is the main automobile thoroughfare from Interstate 5 to the beach with a mix of residential and commercial development. Both corridors have significant bus ridership and pedestrian activity. These two corridors and the area around Interstate 5 present challenges and opportunities for programs and infrastructure improvements that could provide residents and visitors with more mobility options in, out of, and around the neighborhood.

COMMUNITY VOICES

"Beach Bug is awesome!! More of that! E-bikes are great but only if you have security at your destination. Might pair well with the new smart streetlights just approved. Bike lockers for fee would also be great at popular spots, like the beach."

"Please continue to build more viable and safe bike lanes; the bright green paint really helps motorists see the bike lane and watch for cyclists."

"Neighborhood shuttle is good, but a fixed route would help."

MOBILITY PROGRAMS OF INTEREST

The community expressed interest in the following mobility programs:

- Neighborhood shuttle
- Transit fare subsidies
- Art in the right-of-way
- Slow Streets
- Curbside management

PLANNED PROJECTS

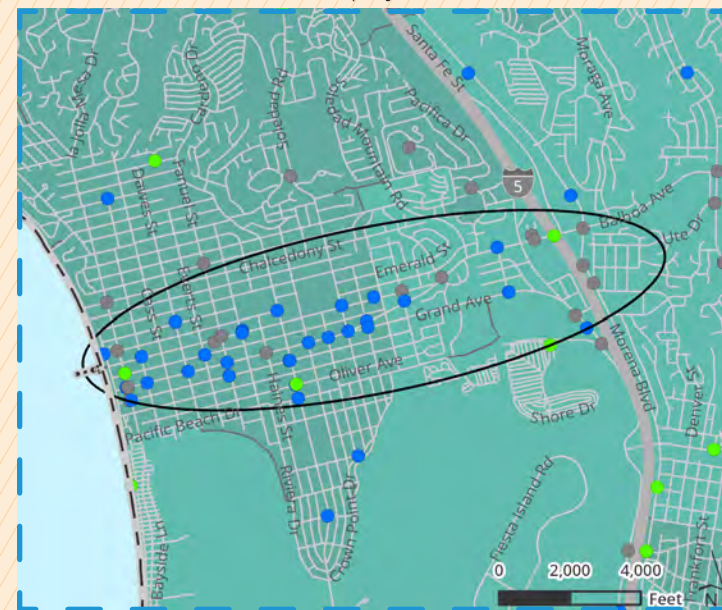
The table and figure to the right detail the top City mobility projects for Focus Area 7. The complete list of mobility projects for all Focus Areas can be found in Appendix B.

OPPORTUNITIES FOR FUTURE STUDY

Focus Area 7 opportunities for future study include but are not limited to:

- » Slow Streets evaluations that orient streets towards pedestrians and bicyclists, including at Ocean Blvd between Thomas Ave and Grand Ave
- » Complete Street improvements along key corridors including Grand Ave, Garnet Ave, and Mission Blvd
- » Active transportation connection between Balboa Trolley Station and the Pacific Beach community

FIGURE 6-22: FA7 Climate Equity Index and Collisions



*Severe or Fatal Collision by Mode Type: ● Pedestrian ● Bicycle ● Vehicle
** For full Legend details see Figure 6-7.

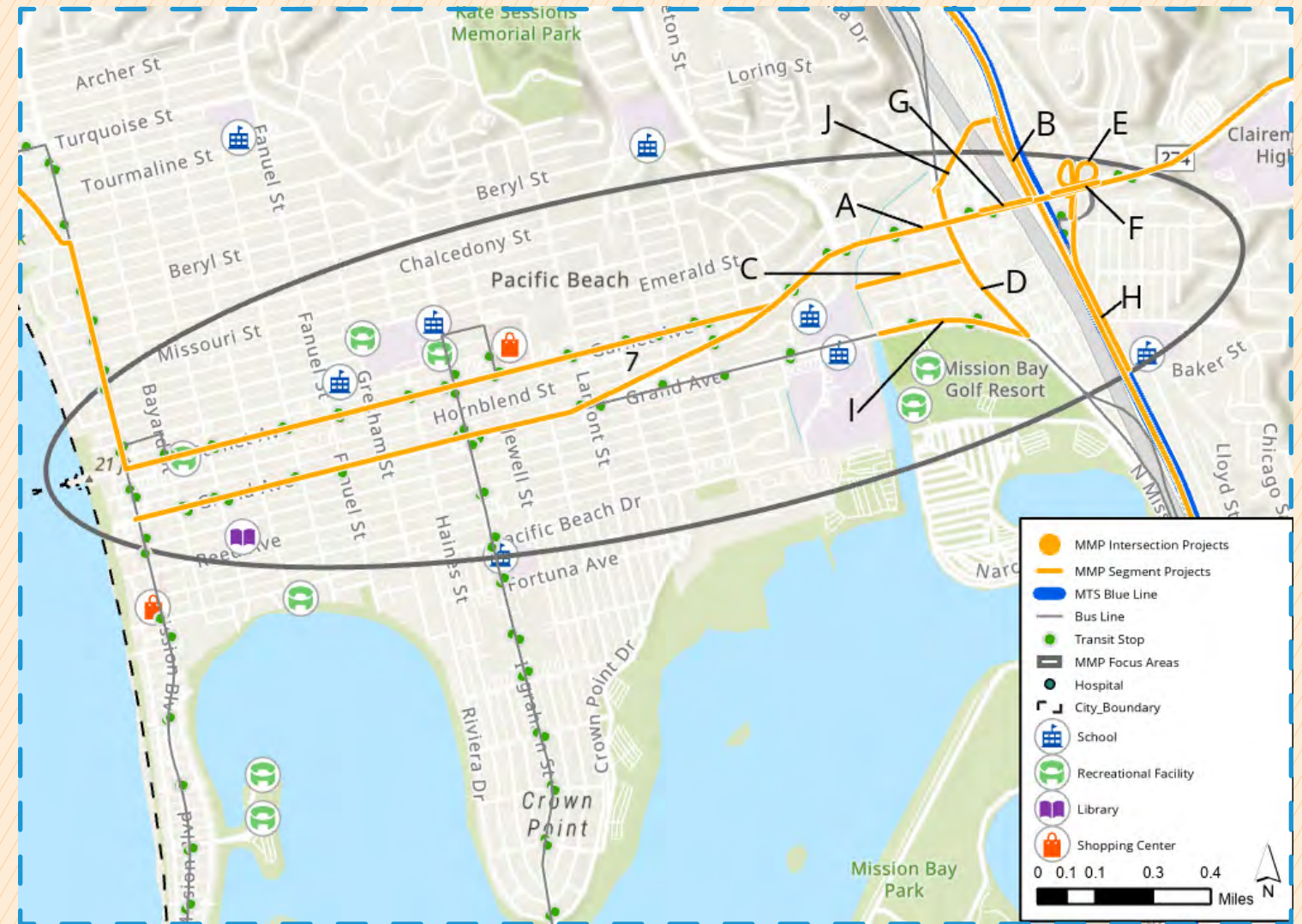


FIGURE 6-23: FA7 Planned Projects Map

TABLE 6-8: FA7 Planned Projects

City Projects	Description	Mode
A	Implement multi-use paths on both sides of Garnet/Balboa Ave between Bond St and Moraga Ave with trees and planted parkways. Also, implement on-street bikeways.	Walking, Cycling
B	Provide shared-use path on the east side along Santa Fe St from Garnet Ave to Damon Ave.	Walking, Cycling
C	Implement signage and traffic calming measures along Magnolia Ave west of Mission Bay Dr.	Vehicular
D	Install multi-use paths with pedestrian-scale lighting along Mission Bay Dr between Damon Ave and Grand Ave. Add on-street bike lanes between Garnet Ave and Grand Ave.	Walking, Cycling
E	Provide missing sidewalk within and around the Morena Blvd/Balboa Ave interchange ramps.	Walking
F	Reconfigure the Morena Blvd/Balboa Ave interchange, including removal of a loop ramp.	Vehicular
G	Enhance and widen the I-5 under-crossing at Garnet/Balboa Avenue with a multi-use path with pedestrian-scale lighting.	Walking, Cycling
H	Implement a two-way cycle track on the west side of Morena Blvd between Balboa Ave and Baker St and wider sidewalks. Remove free-right turn movements at select intersections.	Walking, Cycling
I	Enhance pedestrian crossings at signalized intersections along Grand Ave between Rose Creek Trail and Mission Bay Dr and include new pedestrian crossings and streetscape.	Walking, Cycling
J	Implement a two-way cycle track on the north side of Damon St between Santa Fe St and Mission Bay Dr, lighting along the I-5 underpass, and pedestrian refuge areas	Walking, Cycling