

FOCUS AREA 3

COUNCIL DISTRICTS 3, 9

| | | |
|--|---|--|
| | POPULATION | FOCUS AREA: 82,000 CITY OF SAN DIEGO: 1,386,300 |
| | MEDIAN HOUSEHOLD INCOME | FOCUS AREA: \$62,000 CITY OF SAN DIEGO: \$88,000 |
| | MEDIAN AGE | FOCUS AREA: 34 CITY OF SAN DIEGO: 36 |
| | PERCENTAGE OF WORKERS DRIVING ALONE | FOCUS AREA: 67% CITY OF SAN DIEGO: 69% |
| | PERCENTAGE OF HOUSEHOLDS WITH NO VEHICLE | FOCUS AREA: 10% CITY OF SAN DIEGO: 6% |

OVERVIEW

Focus Area 3 includes parts of Uptown, North Park, and City Heights. The area includes parts of Interstate 805 and State Route 15. The Focus Area is roughly centered along University Avenue from near the western edge of Hillcrest at Front Street to just east of 54th Street in City Heights. In addition to University Avenue, West Washington Street and El Cajon Boulevard are the other two main east-west roads in this Focus Area. All three roads are busy mixed-use corridors that include single and multifamily residential and a variety of commercial buildings from small storefronts to larger retail with surface and garage parking. These corridors are essential to the life, commerce, and cultures of the neighborhoods and they provide opportunities for further safety, transit, and pedestrian and bicycle improvements. It is also important to identify improvements on key streets that intersect or run parallel with these corridors.

COMMUNITY VOICES

"Make mass transportation that goes to where folks need to go in a timely manner happen."

"There is a need for more buses and trolleys."

"Close the first/last mile gap: Ensure there are multiple comfortable options to access transit: bikeshare, neighborhood electric vehicles, and improved transit transfer services."

MOBILITY PROGRAMS OF INTEREST

The community expressed interest in the following mobility programs:

- Neighborhood shuttle
- Transit fare subsidies
- Slow Streets
- On-demand specialized transportation
- Community parking district

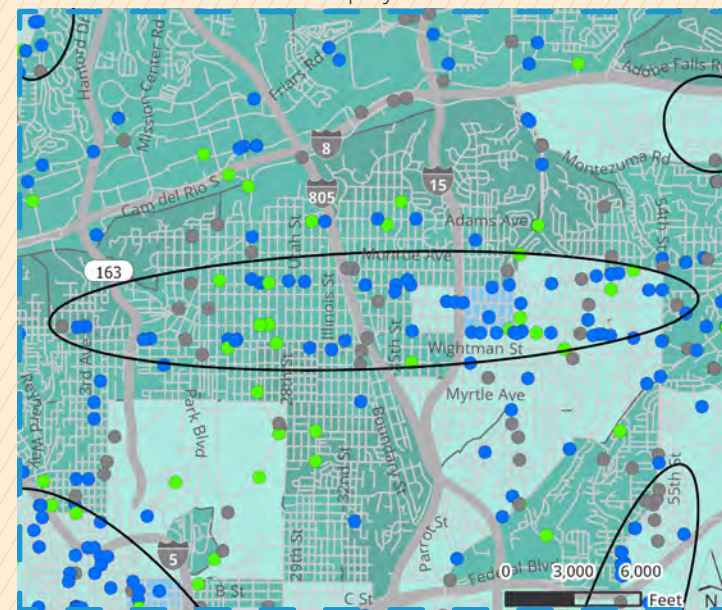
PLANNED PROJECTS

The table and figure to the right detail the top 10 City mobility projects for Focus Area 3. The full list of mobility projects for all Focus Areas can be found in Appendix B.

OPPORTUNITIES FOR FUTURE STUDY

- Focus Area 3 opportunities for future study include but are not limited to:
- » Addressing active transportation barriers, such as access across Florida Canyon
 - » Scalable micromobility and microtransit options
 - » Exploration of pilot studies to initiate mobility programs
 - » Additional Complete Streets and multimodal improvements along El Cajon Blvd and University Ave

FIGURE 6-14: FA3 Climate Equity Index and Collisions



*Severe or Fatal Collision by Mode Type: ● Pedestrian ● Bicycle ● Vehicle
 ** For full Legend details see Figure 6-7.

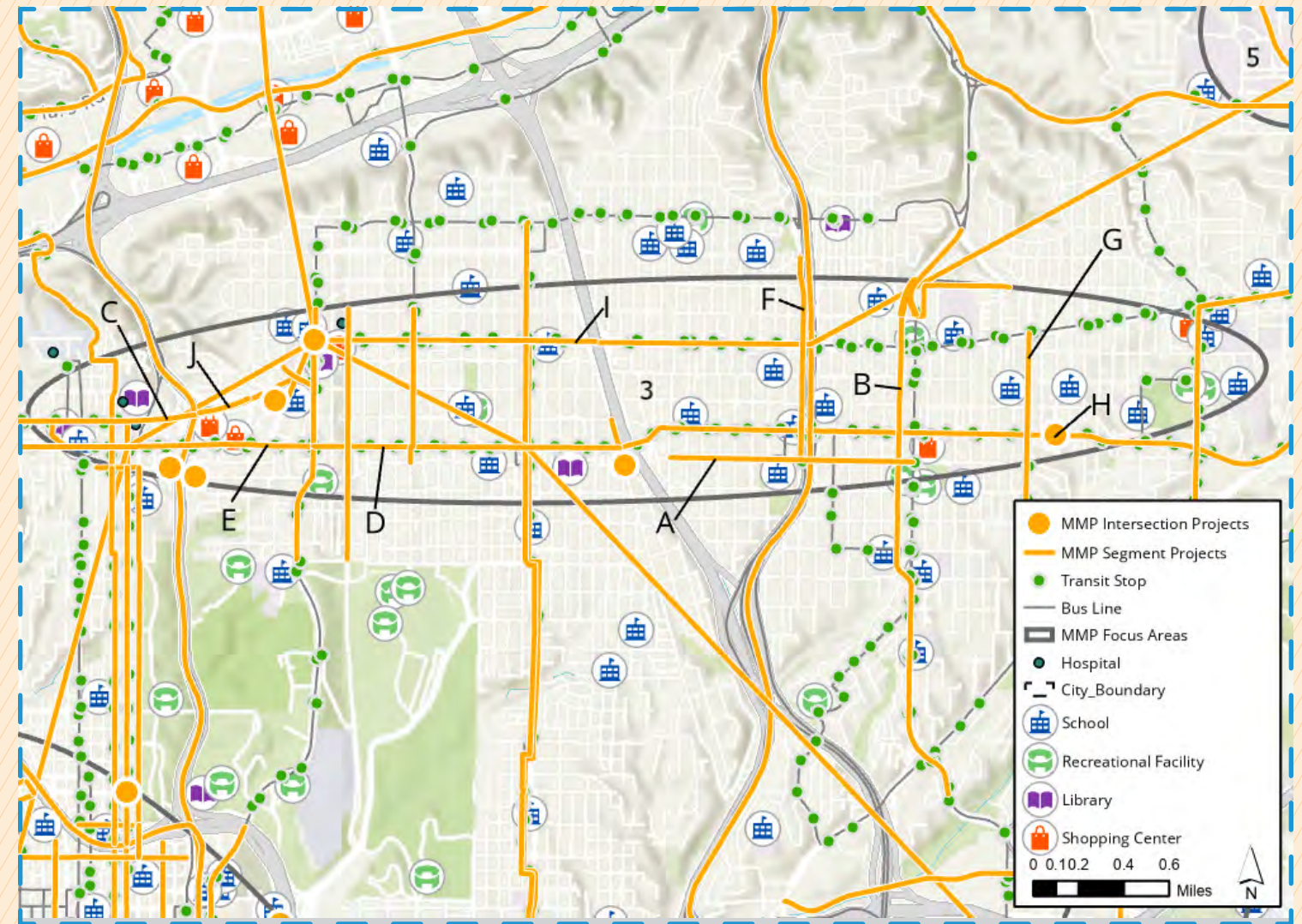


FIGURE 6-15: FA3 Planned Projects Map

TABLE 6-4: FA3 Planned Projects*

| City Projects | Description | Mode |
|---------------|---|-----------------------------|
| A | Implement bike lanes along Wightman St from Swift Ave to Fairmount Ave. | Cycling |
| B | Implement a bikeway on 43rd St from Meade Ave to Ridge View Dr. | Cycling |
| C | Implement bike lanes along Washington St from University Ave to Normal St. | Cycling |
| D | Implement pedestrian facilities along University Ave between Park Blvd and I-805, which could include wide sidewalks, closing sidewalk gaps, bulb-outs, and pedestrian countdown timers. | Walking |
| E | Provide pedestrian facilities along University Ave between Washington and Park Blvd. | Walking |
| F | Implement a bikeway along 40th St from Madison Ave to Wightman St. | Walking |
| G | Install curb, gutter, sidewalk, curb ramps, striping, landscaping, roadway restoration, traffic signal modifications, and traffic calming measures along Euclid Ave between Redwood St and El Cajon Blvd. | Walking, Cycling, Vehicular |
| H | New traffic signal at Estrella Ave and University Ave. | Walking |
| I | Provide pedestrian facilities along El Cajon Blvd between I-805 and Park Blvd. | Walking |
| J | Implement missing sidewalk along the north side of Washington St near the SR 163 On-ramp. | Walking |

*Mid-City Communities Plan is being updated and for more information on how you can get involved in the planning process visit <https://www.sandiego.gov/planning/mid-city-communities-plan-update>.

**It is important to note that this plan update could modify projects and/or add new mobility recommendations.