

The logo for PLAN HILLCREST features the word "PLAN" in a light grey, sans-serif font above the word "HILLCREST" in a bold, dark grey, sans-serif font. To the left of the text is a vertical bar composed of seven thin, parallel lines in the colors of the rainbow: red, orange, yellow, green, blue, indigo, and violet.

PLAN HILLCREST

Hillcrest FPA

Public Realm

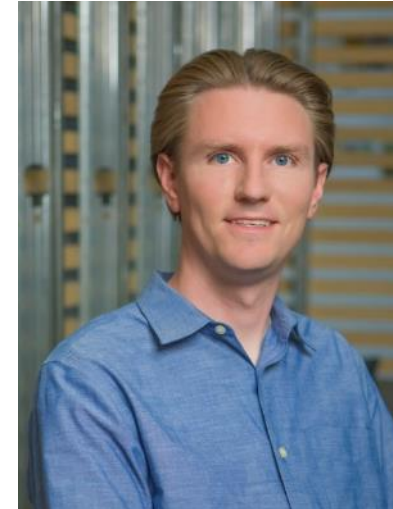
Tonight's Team



Michael Prinz
Senior Planner
City of San Diego
MPrinz@sandiego.gov



Scott Sandel, RLA, ASLA
Parks + Public Spaces
Planner
City of San Diego
SSandel@sandiego.gov



Brad Lents
RLA, AICP, LEED AP
Principal, Spurlock
Landscape Architects

Subcommittee Agenda

1. Introductions
2. Community Feedback on Public Spaces
3. Public Realm: Parks and Public Spaces Concepts
4. Subcommittee and Public Comment

Tonight's Focus and Expected Takeaways

Purpose

Provide an Overview of Public Realm, Parks & Public Space Concepts

Discussion

Discuss opportunities by public space typology

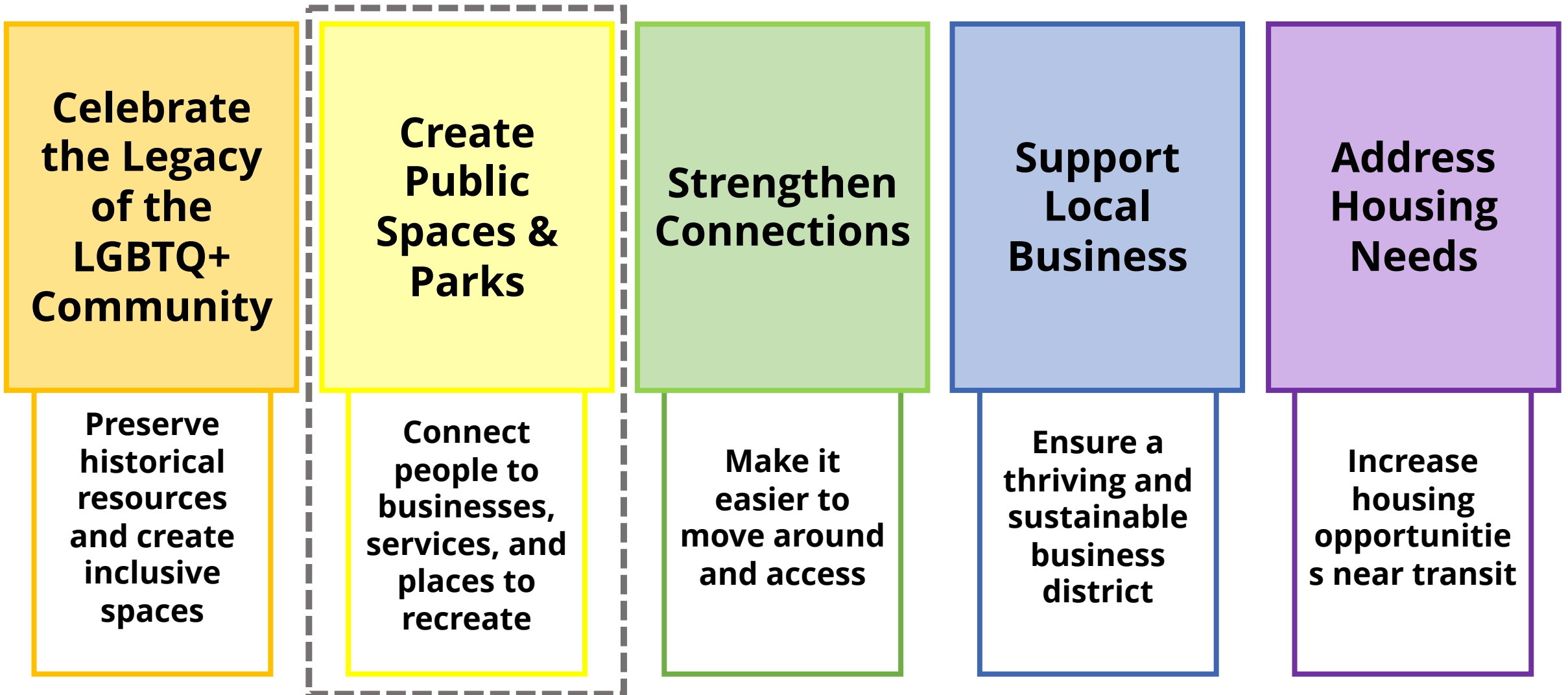
Takeaways

Provide feedback to guide the design of new public spaces and parks in Hillcrest

What's Next?

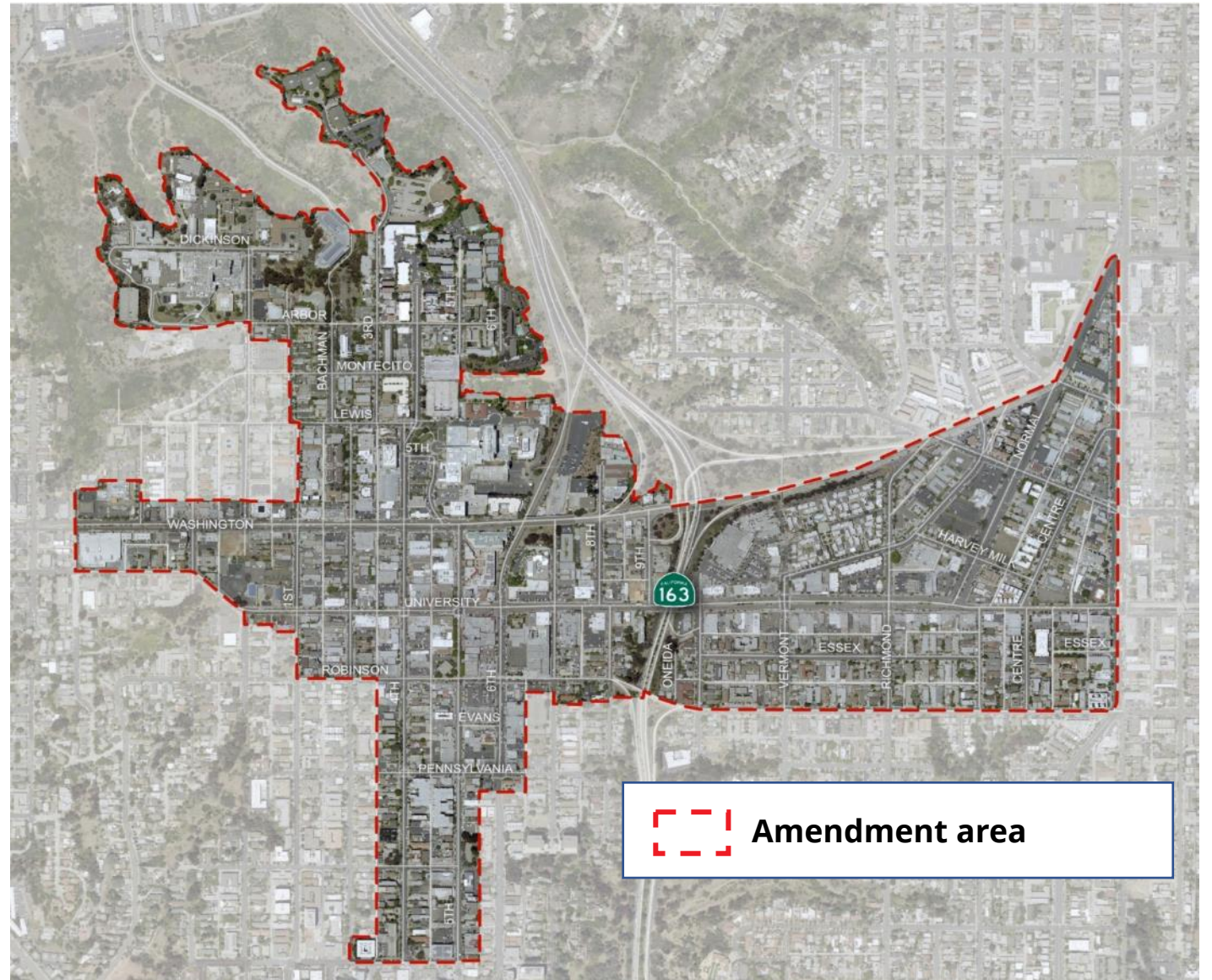
Public Space Concept development and refinement based on community input

Recap - Plan Hillcrest Objectives



Recap - Plan Hillcrest Area

- Amend the Uptown Community Plan
- Address the broader Hillcrest Neighborhood
- Identify mobility and public space enhancements that connect the community



July Uptown Planners Meeting Input



Live/Work/Play
Environment



Urban Design



Affordable
Housing



Pedestrian
Infrastructure



Connected Open
Spaces



Multimodal
improvements

- Address Pedestrian Infrastructure (automated pedestrian crosswalks) - *Roy Dahl*
- Expand the Normal Street Promenade to other areas. *Zach Bunshaft*
- Address equity and prioritize bicycle access. *Brer Marsh*
- Emphasize good urban design. *Tom Mullaney*

July Planning Commission Workshop Input



Urban Design



Parks & Plazas



Increased Jobs



Varied Unit Sizes



Additional Housing



Pedestrianized Spaces



Connections to Balboa Park



LGBTQ+ District

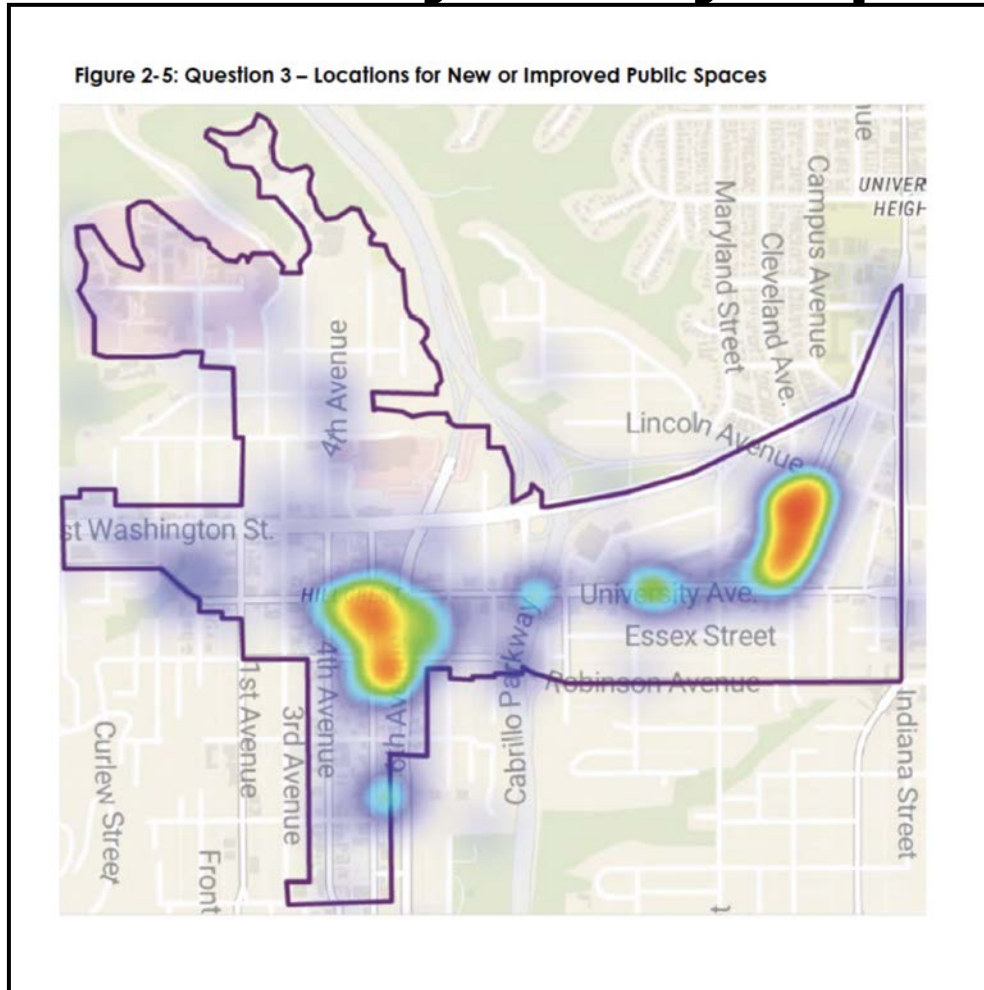


Mobility Improvements

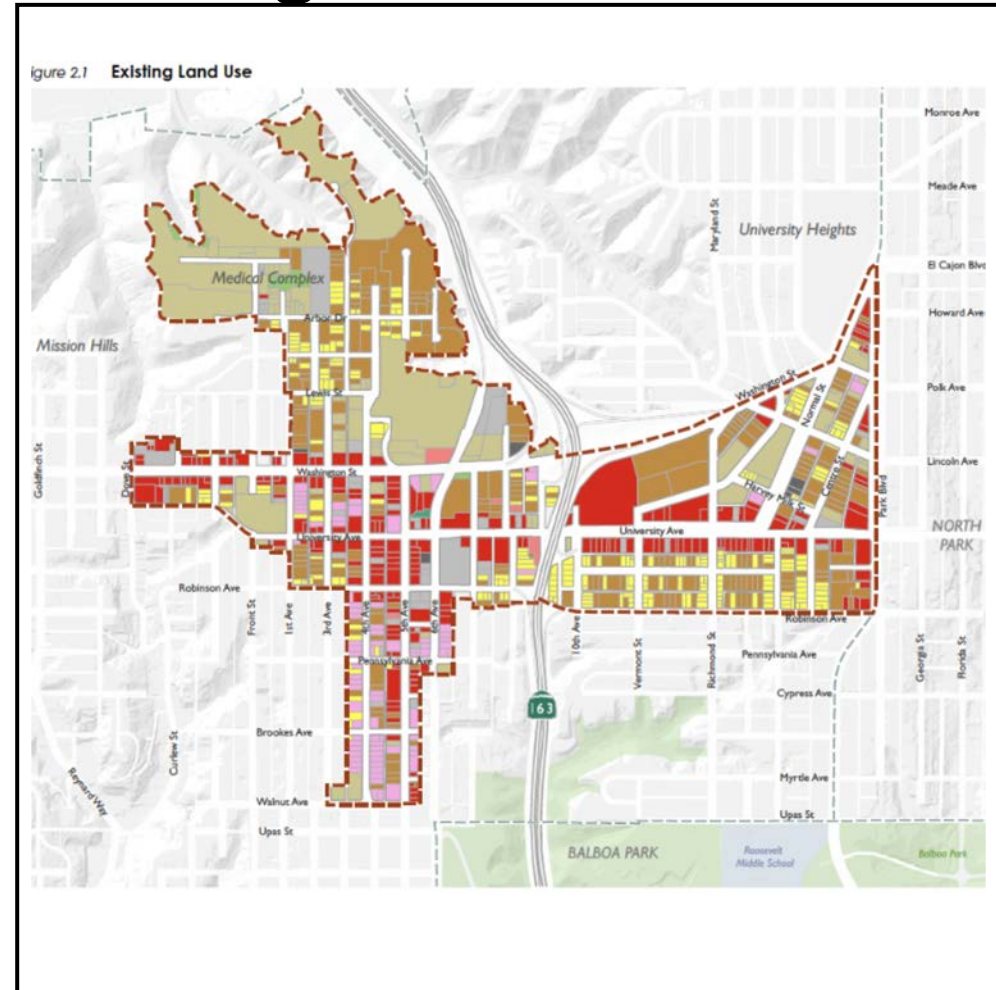
- Increase plazas, linear street parks and tree canopy - Commissioner Granowitz
- Reduce street parking to provide the right-of-way for other users - Commissioner Boomhower

Plan Hillcrest Documents

Community Survey Report



Existing Conditions Atlas



Survey Results – Public Realm



STREETS FOR PEOPLE

University Ave. needs to be redesigned to focus on **people walking and biking** to make it safer to get around and help **support local businesses.**

PARKS AND PLAZAS

Surface parking in the area could be much better utilized for **urban plazas or park space.**

URBAN TRAILS

Both 4th and 5th Avenues should be an **urban trail** as a connector from Hillcrest to the downtown!

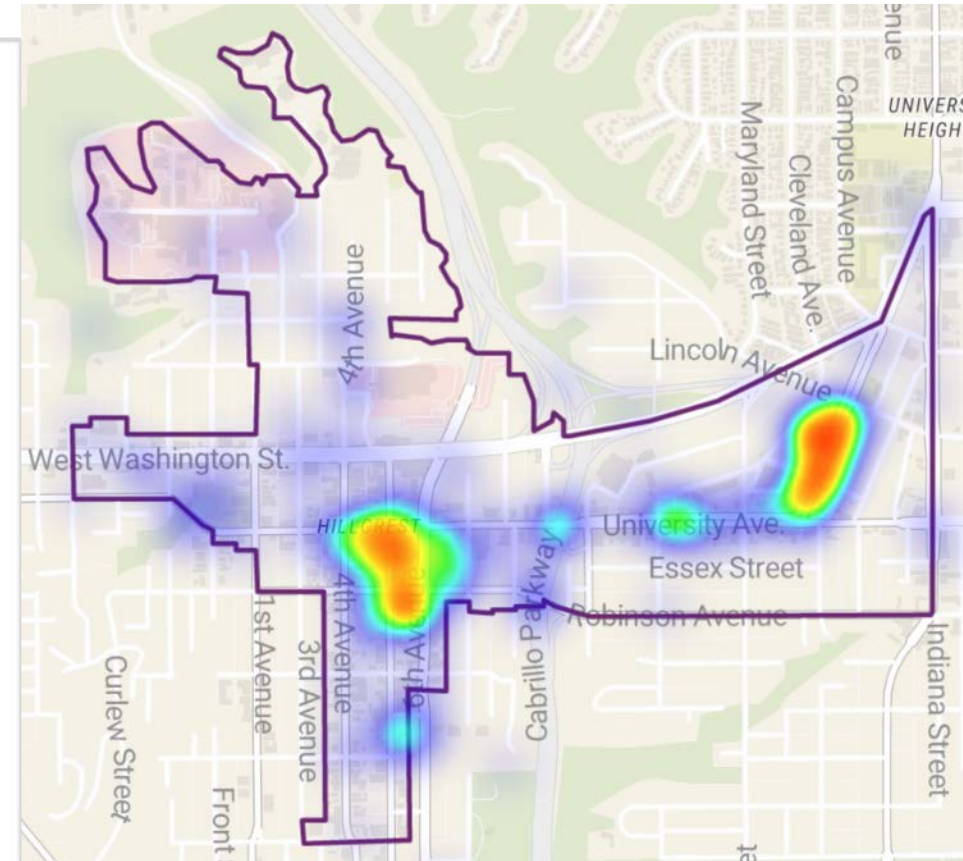
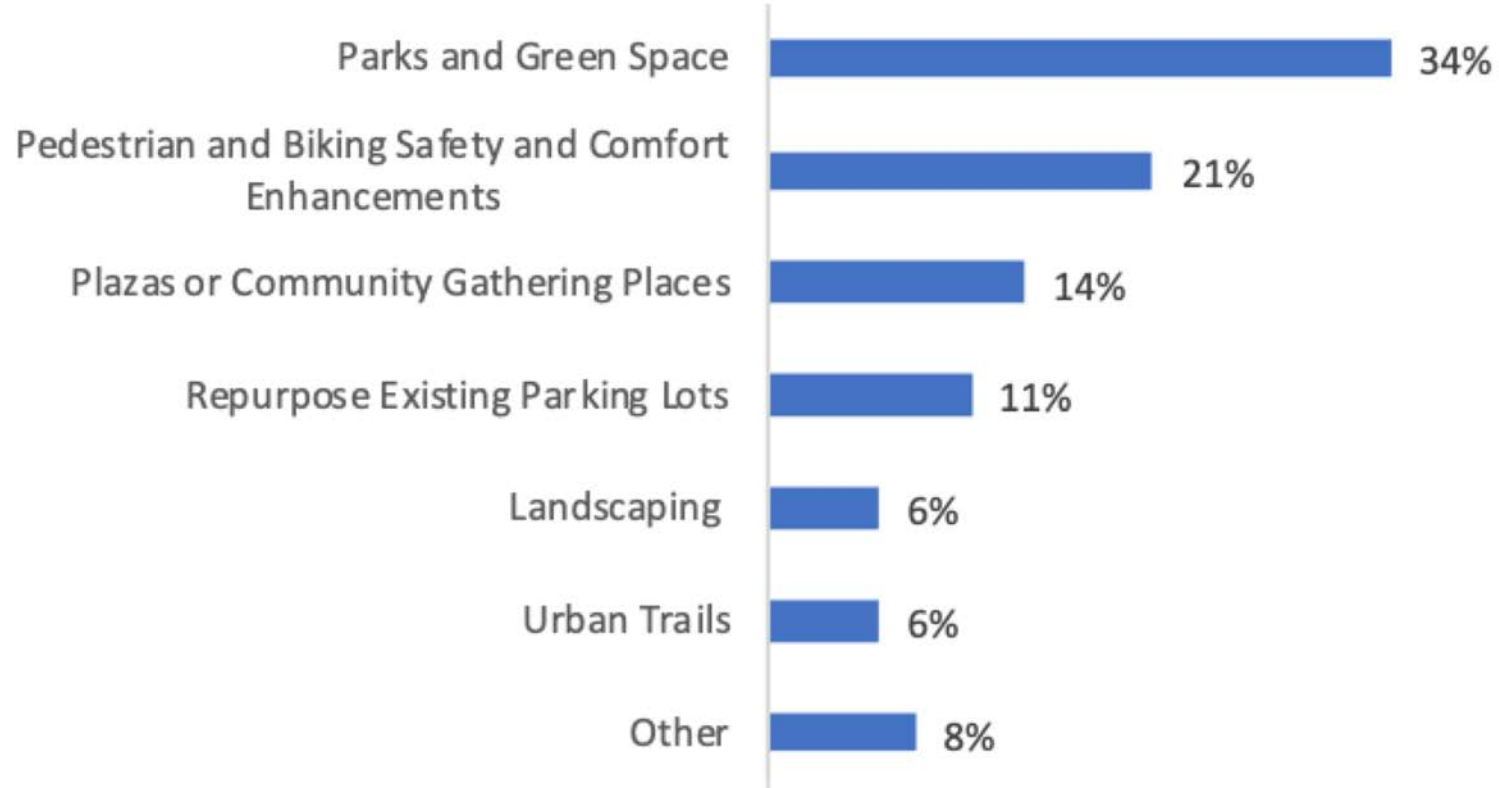
JOINT USE - SCHOOL

Find ways to **utilize Florence Elementary School ground** for more than just school users. This playground sits empty and deserted for months every year.

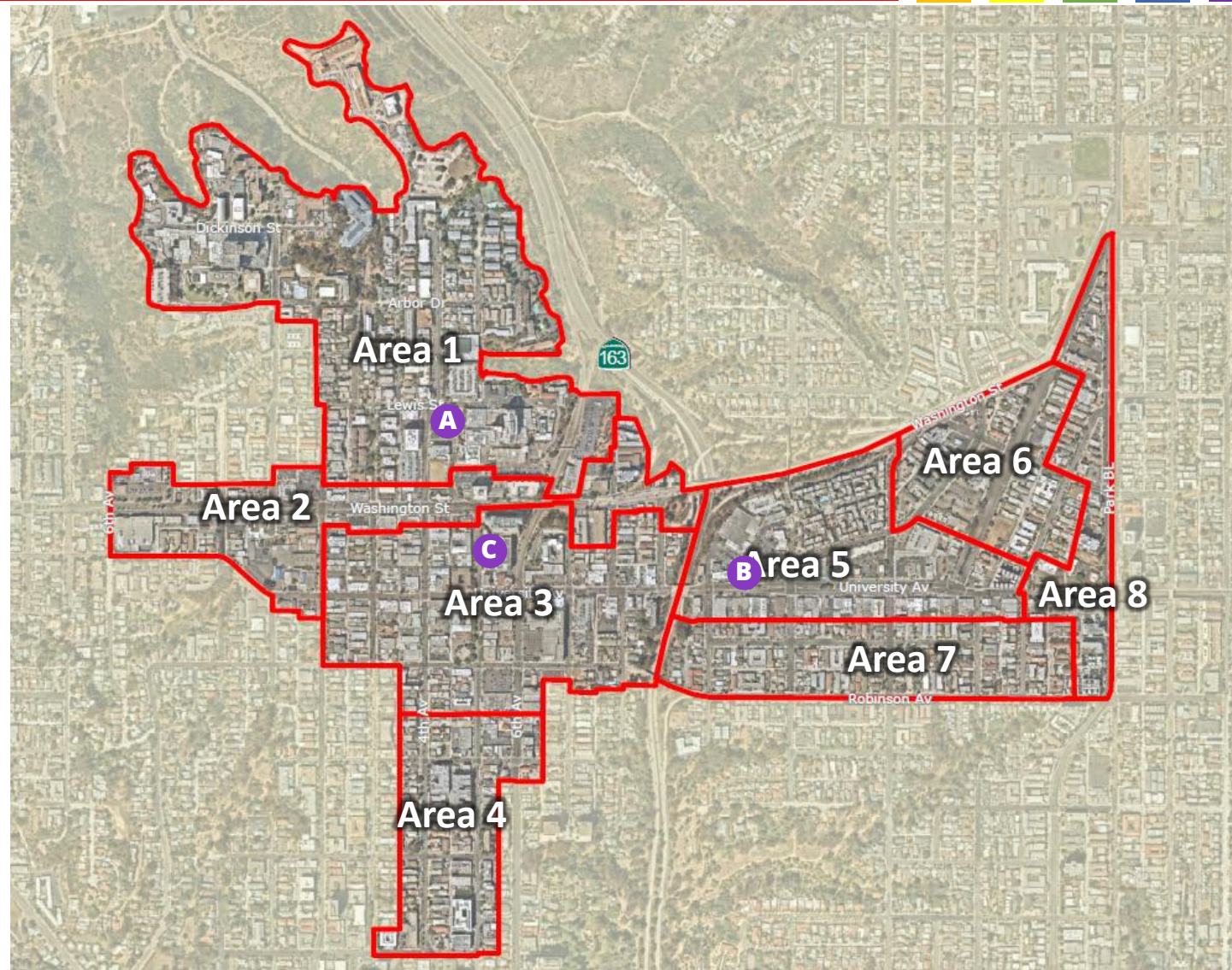
MIXED USE DEVELOPMENT

The **DMV** should be redeveloped to include a better DMV building, **open space and mixed use residential.**

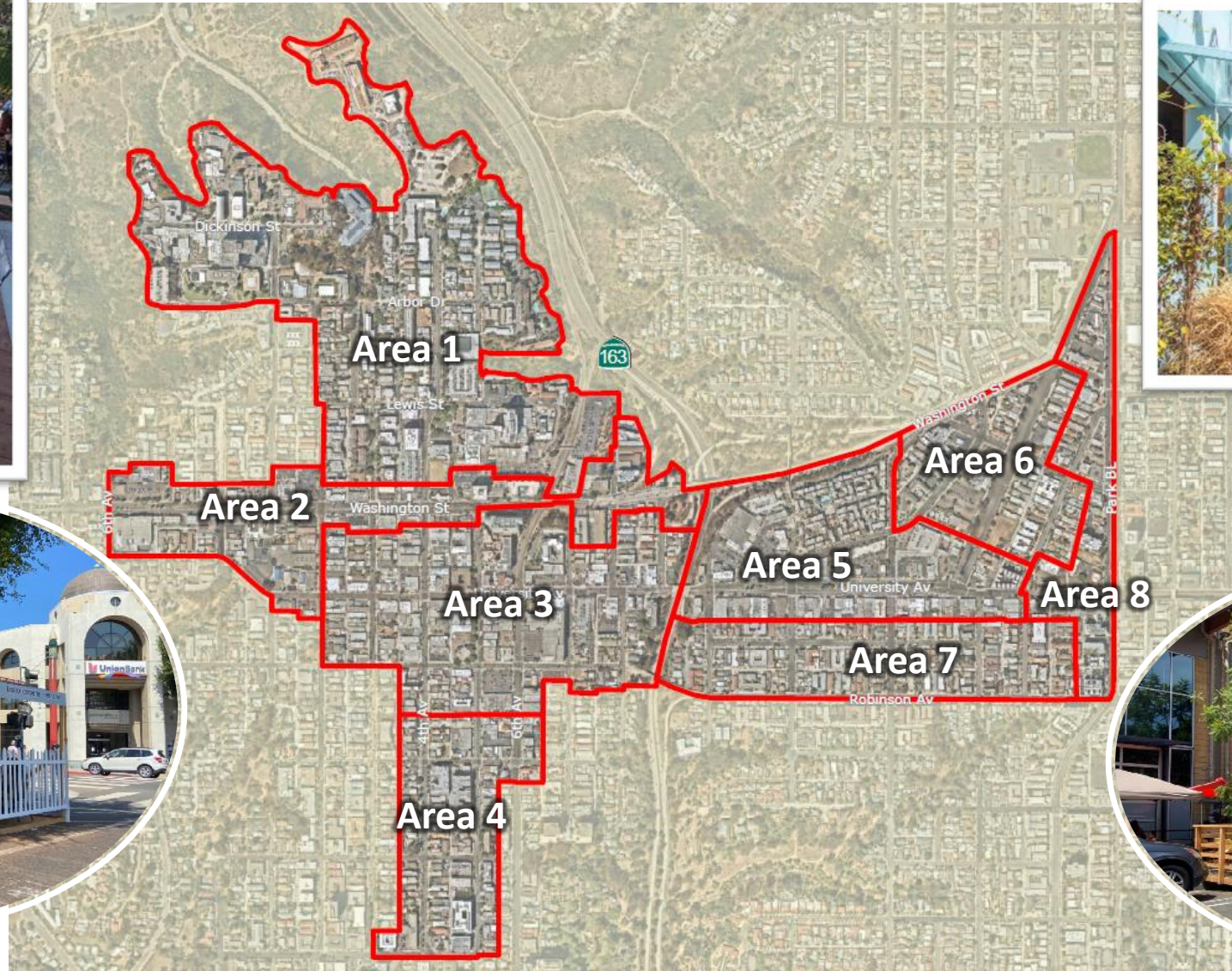
Survey Results – Public Realm



Re-cap: Existing Privately-Owned Public Spaces in Subareas

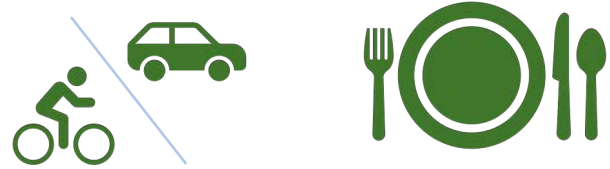


Re-cap: Outdoor Dining in Right-of-Way



Re-cap:

Outdoor Dining in Right-of-Way



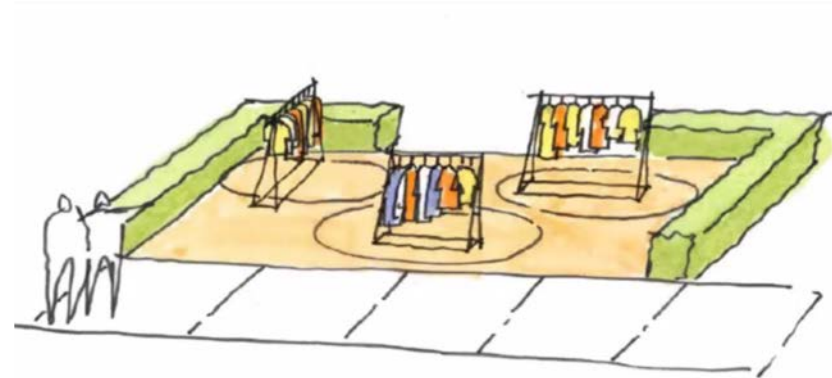
Madison on Park

Re-cap:



Food Hall Communal Dining in the Right-of-Way

- *Coordinate with mobility planning*



4th St. LA

Re-cap:



Recreation & Exercise in the Right-of-Way

- *Coordinate with mobility planning*



Potential New
Linear Park
Features

Re-cap: Existing Community Plan

**Good
PARKS
policies
to build
upon**



PUBLIC SPACE

Public space and landscaping plays a significant role in how people experience the urban environment by providing an interface between the public and private realms. As commercial corridors continue to redevelop and add residential density, the provision of public as well as private on-site open space becomes more important. These spaces can provide needed open space for nearby residents, office workers, shoppers and visitors, especially when larger parks are not accessible, as is the case for most of the community's commercial and mixed-use areas. Refer to Figure 4-6 for an example of public open space within private development.



POLICIES

- UD-4.35** Integrate semi-public outdoor spaces such as on-site plazas, patios, courtyards, paseos, terraces and gardens to address the public realm and support pedestrian activity and community interaction. These are strongly encouraged in larger projects exceeding approximately one acre in size.
- UD-4.36** Delineate plazas and courtyards through building and landscape design. Ensure that plazas and courtyards are comfortably scaled, landscaped for shade and ornamentation, furnished with areas for sitting, and lighted for evening use. Courtyards should be surrounded by active façades or landscape treatments.
- UD-4.37** Provide a variety of seating options, such as benches, seat walls, and broad steps. Private patios may be located in courtyards if they are defined by a low wall or hedge.
- UD-4.38** Provide opportunities for public open spaces in neighborhood centers, villages, and nodes.
- UD-4.39** Orient public spaces within private development towards the public right-of-way and frame with active building façades (e.g., entrances, windows, balconies, etc.) that help activate the space and provide "eyes on the street" for security.

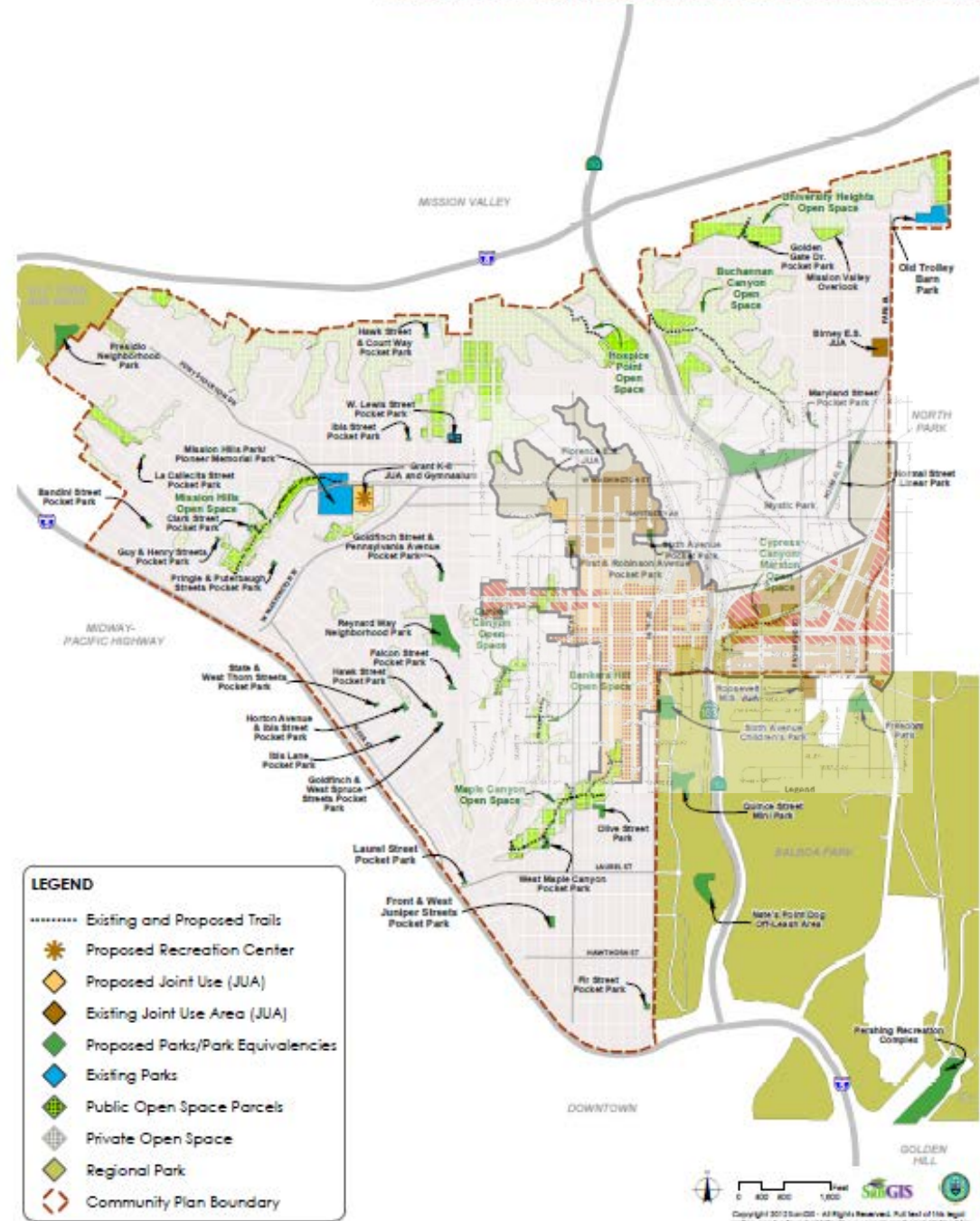


Uptown PARKS

Existing Community Plan

PLAN
HILLCREST

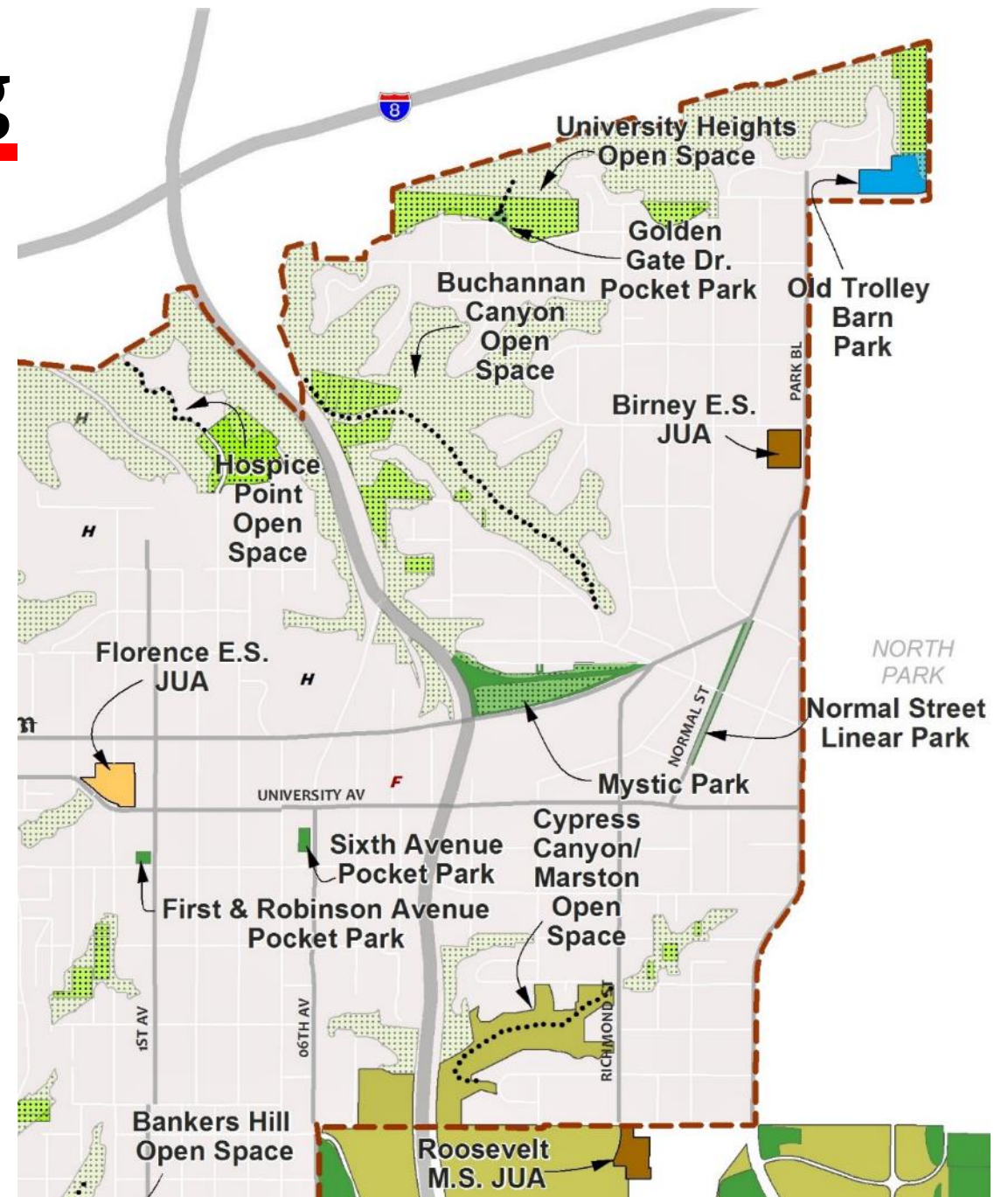
FIGURE 7-1: PARKS, RECREATION FACILITIES AND OPEN SPACE



Existing Parks Planning

NORTHEAST

- University Heights Open Space
- Normal Street Promenade
- Sixth Avenue Pocket Park
- First and Robinson Pocket Park



New Parks

COMING SOON

Normal Street Promenade

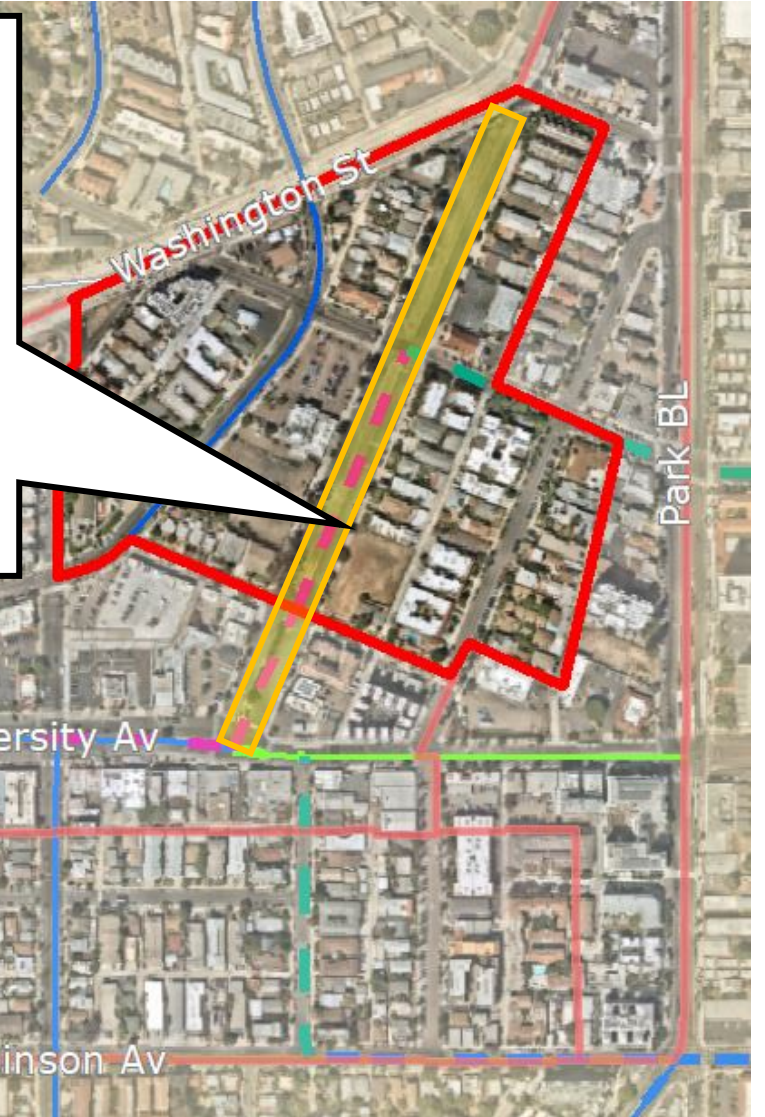


Plan courtesy of SANDAG

Planned Improvements



Rendering courtesy of SANDAG



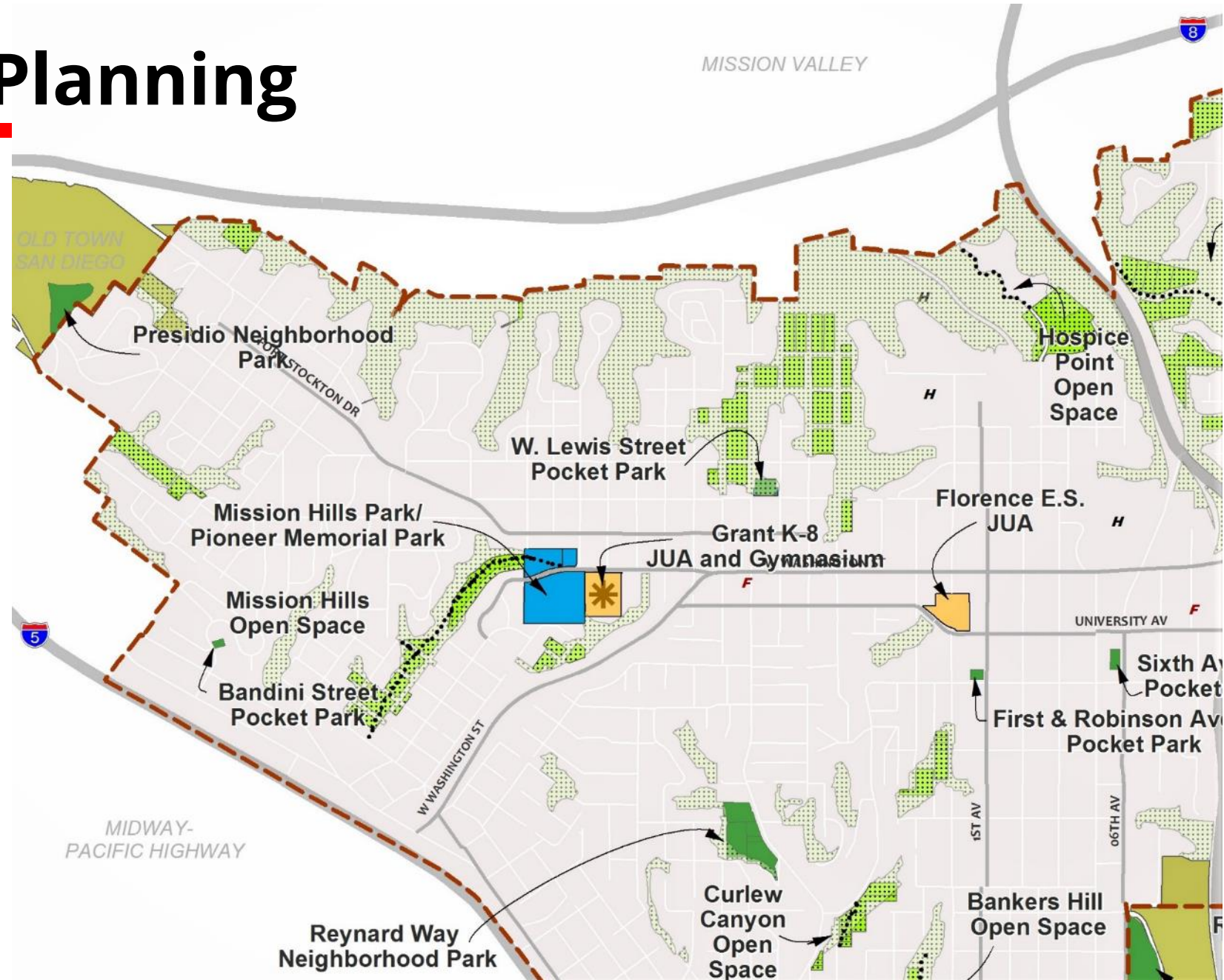
Normal Street Promenade

- 2-way cycle track (west side)

Existing Parks Planning

NORTHWEST

- Grant School Joint-use park/gym
- Reynard Way Neighborhood Park
- Curlew & Bankers Hill Open Spaces
- Pioneer Park
- Presidio Park



Existing Parks Planning

SOUTH

- 6th Avenue Linear Park
- 2 Rec Centers
- Olive Street Mini Park
- West Maple Canyon Pocket Park



New Parks

BUILT

Waldo D.
Waterman
Park on Maple
Street



New Parks

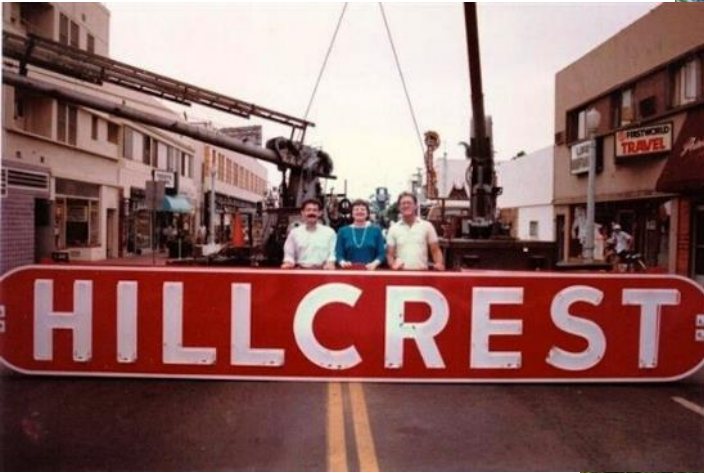
COMING SOON

Olive Street Mini Park



Historic Spaces & Places

Public spaces can be imbued with meaning, and stories of diversity told.



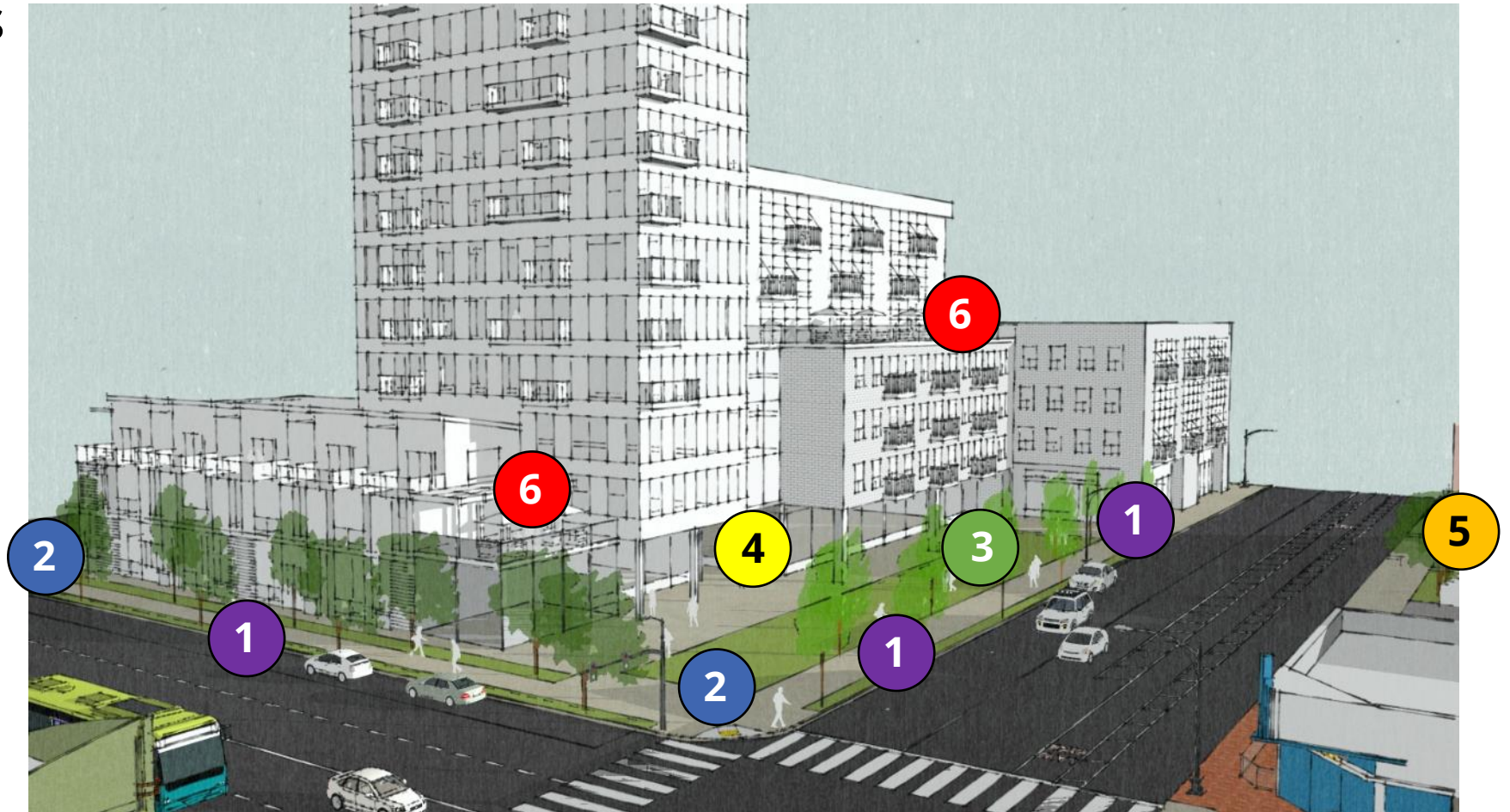
Key Public Realm Typologies

- 1 Alleys/ Streets
- 2 Corner Plazas
- 3 Linear Parks
- 4 Paseos
- 5 Pocket Parks
- 6 Indoor Rec Facilities



Key Public Realm Typologies

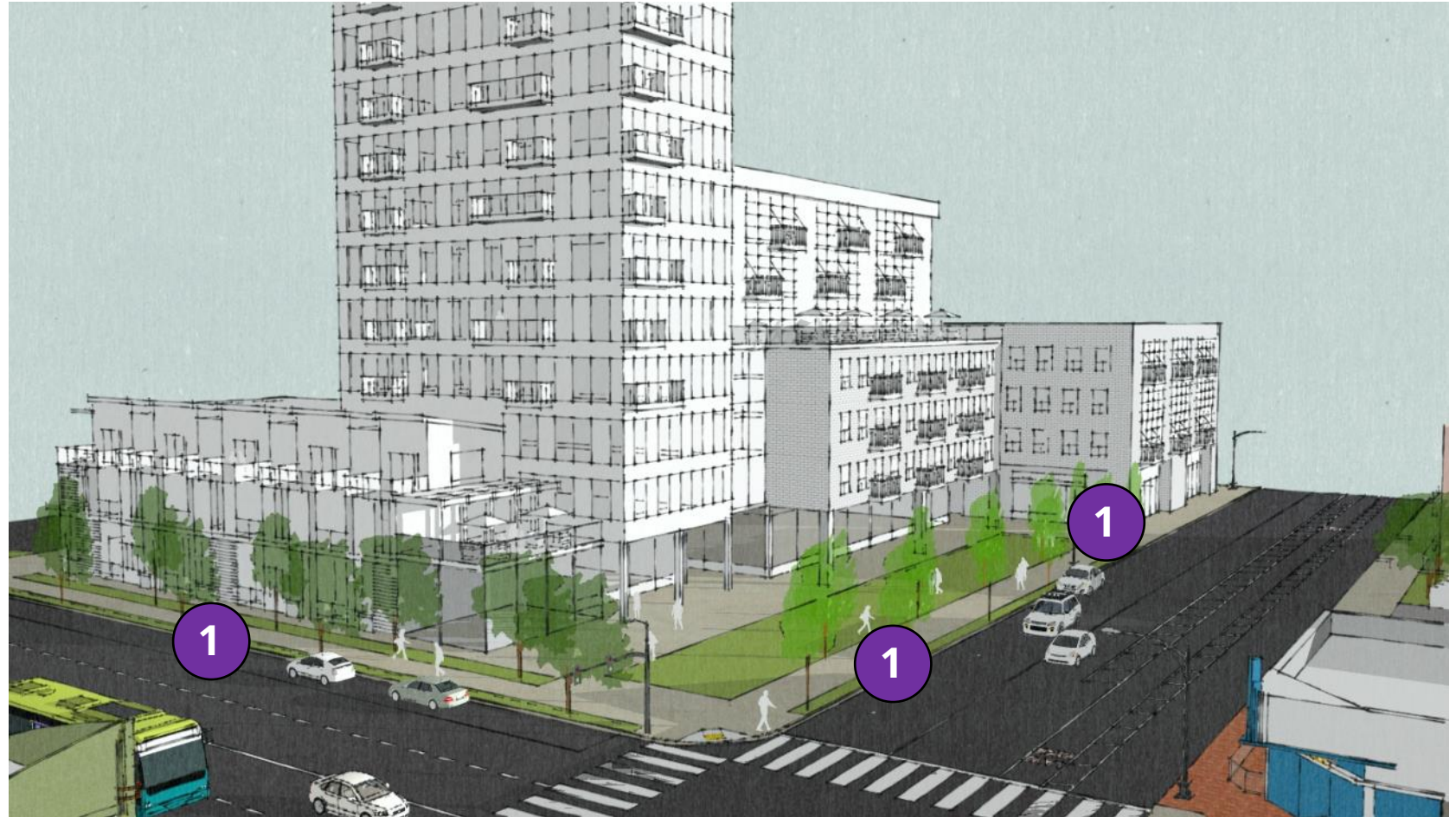
- ① Streets & Alleys
- ② Corner Plazas
- ③ Linear Parks
- ④ Paseos
- ⑤ Pocket Parks
- ⑥ Indoor Rec Facilities



Key Public Realm Typologies

1 Streets & Alleys

- Sidewalks & Café Seating
- Parklets
- Alleys – active and passive



Key Public Realm Typologies – Streets & ROW



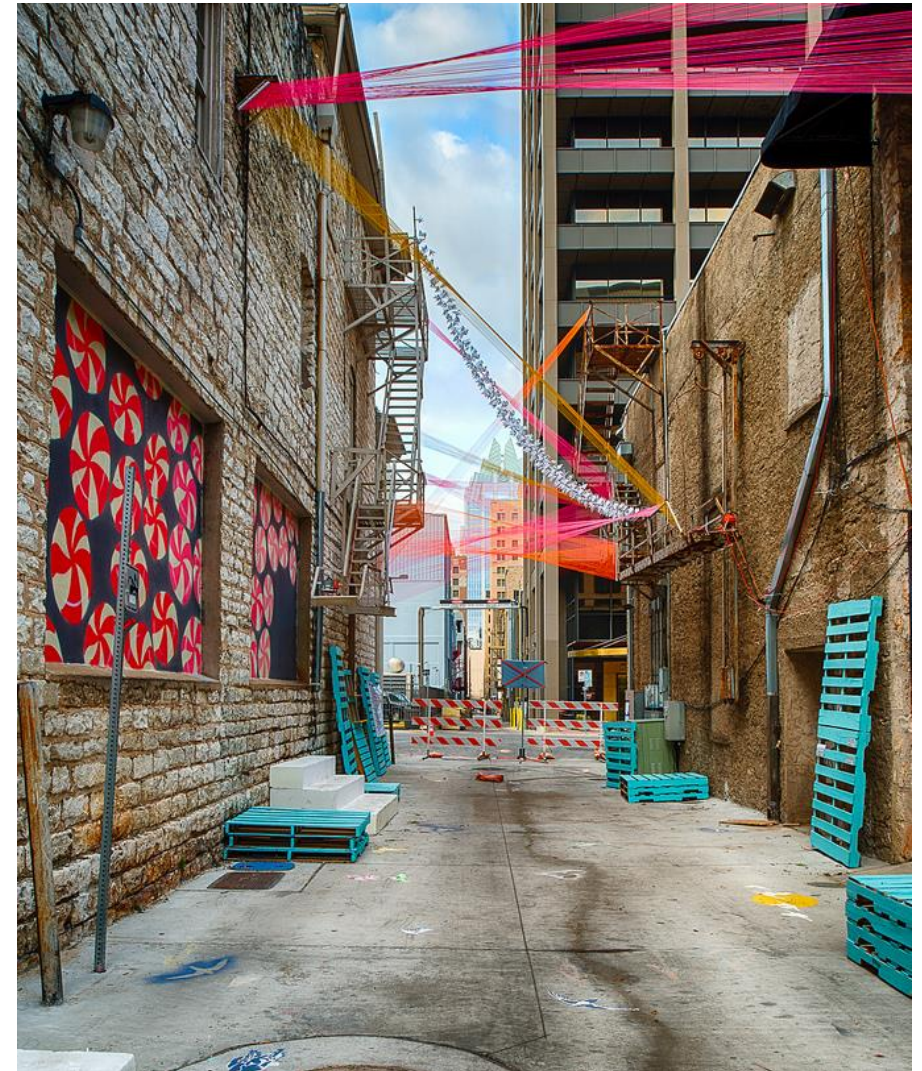
Key Public Realm Typologies – Existing Alleys in Hillcrest



Key Public Realm Typologies – Existing Alleys in Hillcrest



Key Public Realm Typologies – Alleys



Key Public Realm Typologies – Alleys



Key Public Realm Typologies

2 Corner Parks & Plazas

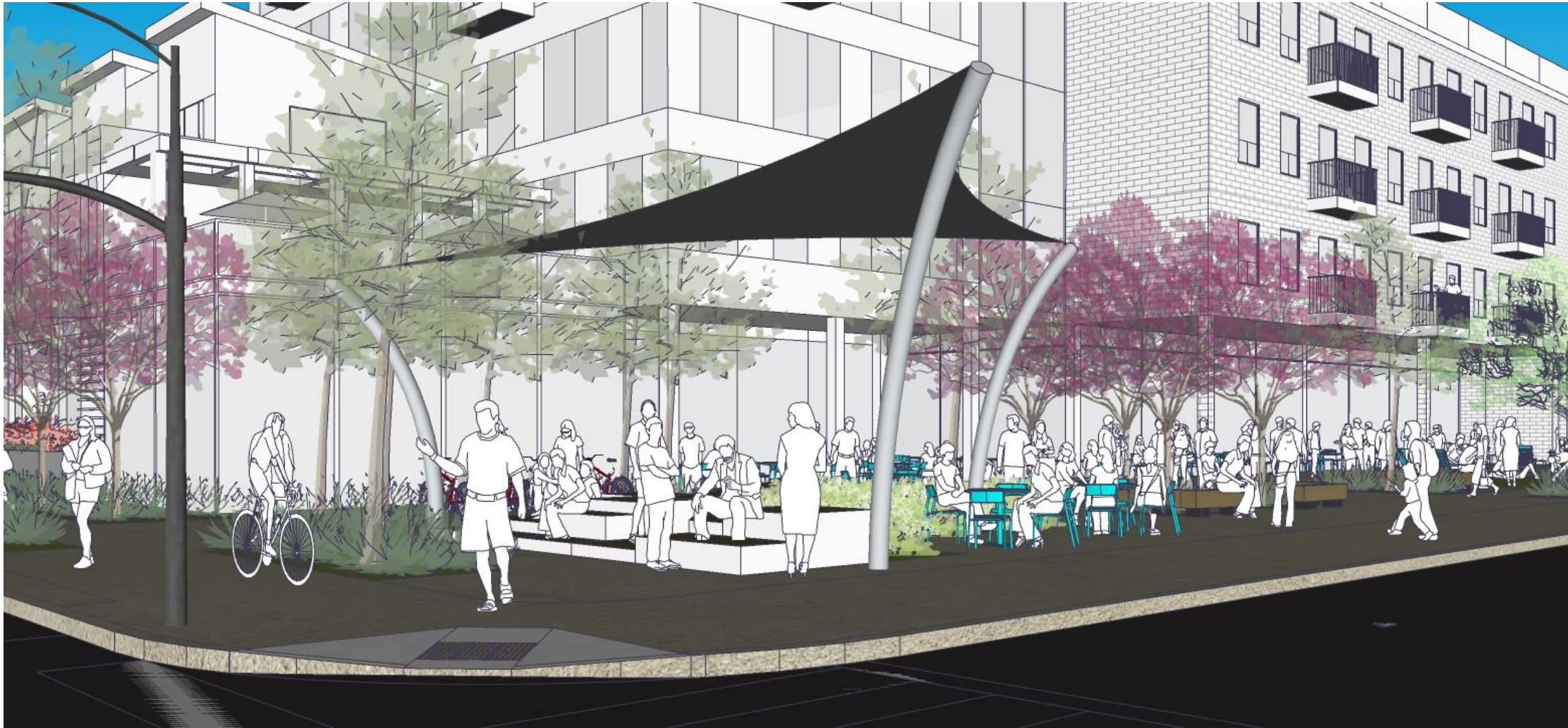
- Active at retail
- More passive at residential areas
- Small scale or large



Key Public Realm Typologies – Park on Street Edge



Key Public Realm Typologies – Park on Street Edge



Key Public Realm Typologies – Corner Plazas



Key Public Realm Typologies – Corner Plazas



Business Journal Pn Hoffman Morgan Plaza

Key Public Realm Typologies – Corner Plazas



Key Public Realm Typologies

3 Linear Parks

- 15' Min. width from sidewalk
- Mix of uses from active to passive
- Coordinate with mobility concepts



Key Public Realm Typologies – Linear [pocket] Parks



Key Public Realm Typologies – Linear [pocket] Parks



Key Public Realm Typologies – Linear [pocket] Parks



Key Public Realm Typologies – Linear [pocket] Parks



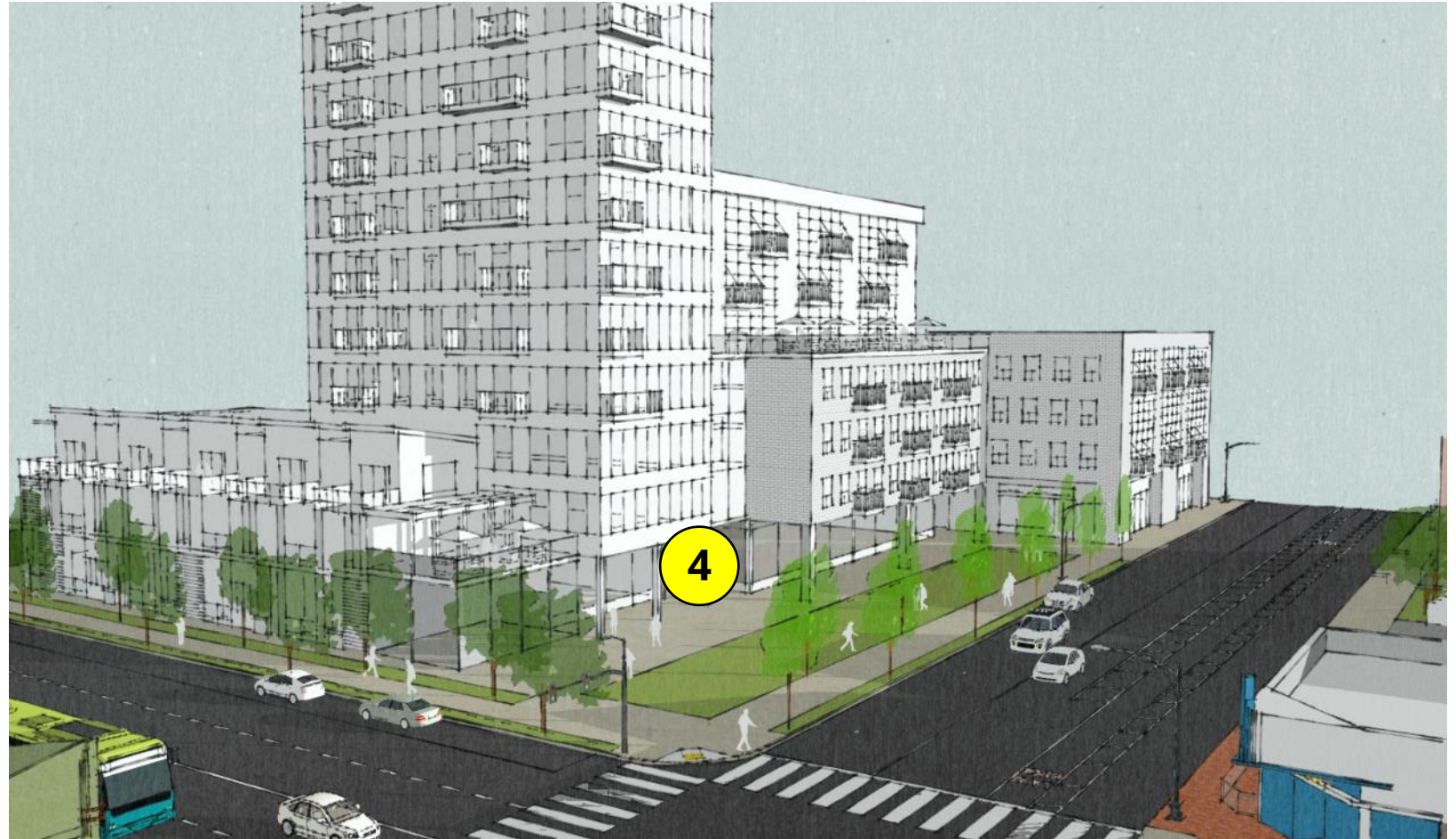
Key Public Realm Typologies – Linear [pocket] Parks



Key Public Realm Typologies

4 Paseos

- Typically mid block
- Can be pedestrian connectors or programmed
- May connect to larger parks & plazas



Key Public Realm Typologies – Paseos



Key Public Realm Typologies – Paseos



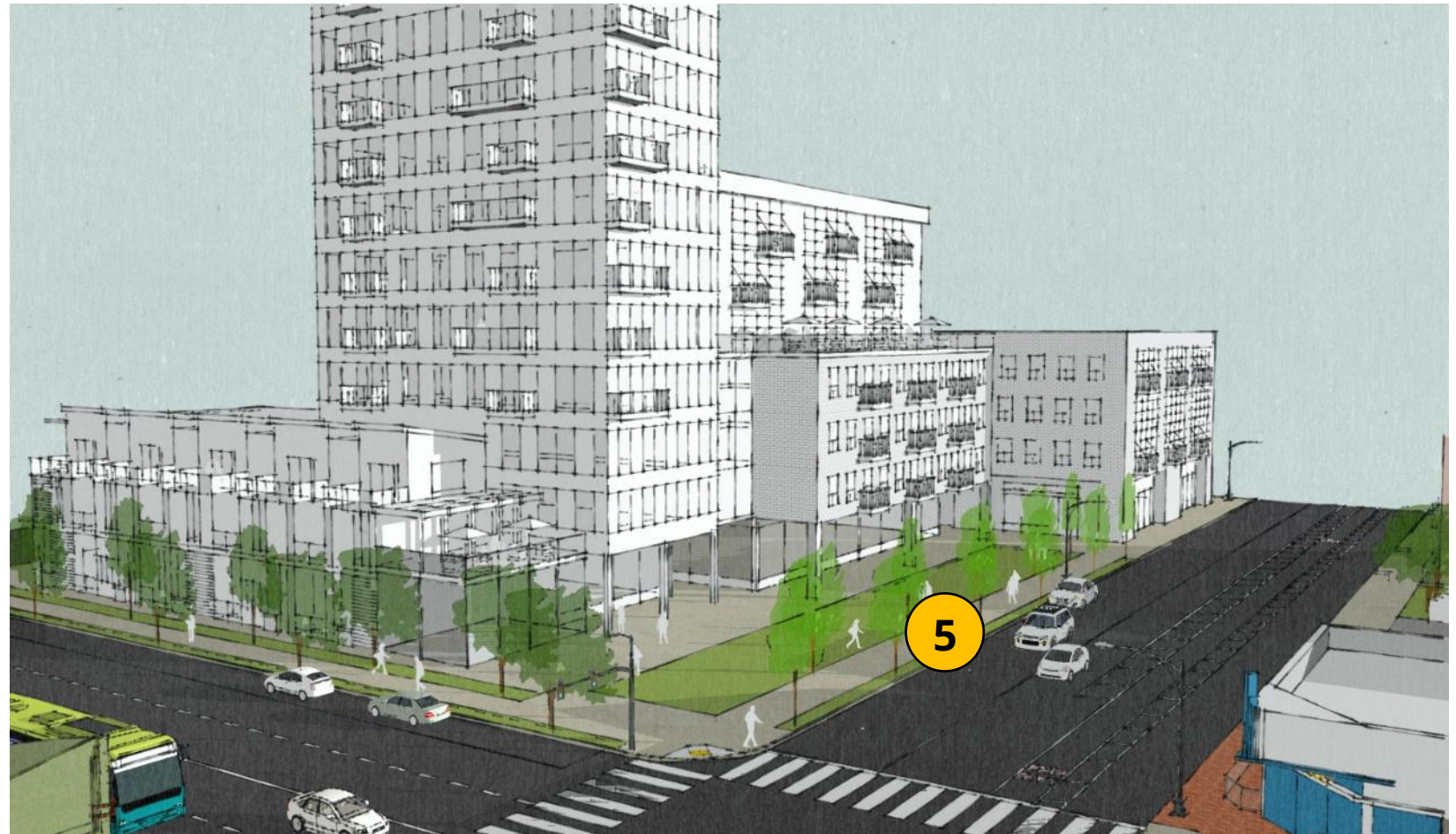
Key Public Realm Typologies – Paseos



Key Public Realm Typologies – Publicly Accessible Parks

5 Pocket Parks

- Small scale (2,500 s.f. up to 3 ac)
- Infill on smaller lots or parking lots
- Mix of uses
- Use tailored to specific location



Key Public Realm Typologies – Pocket Parks

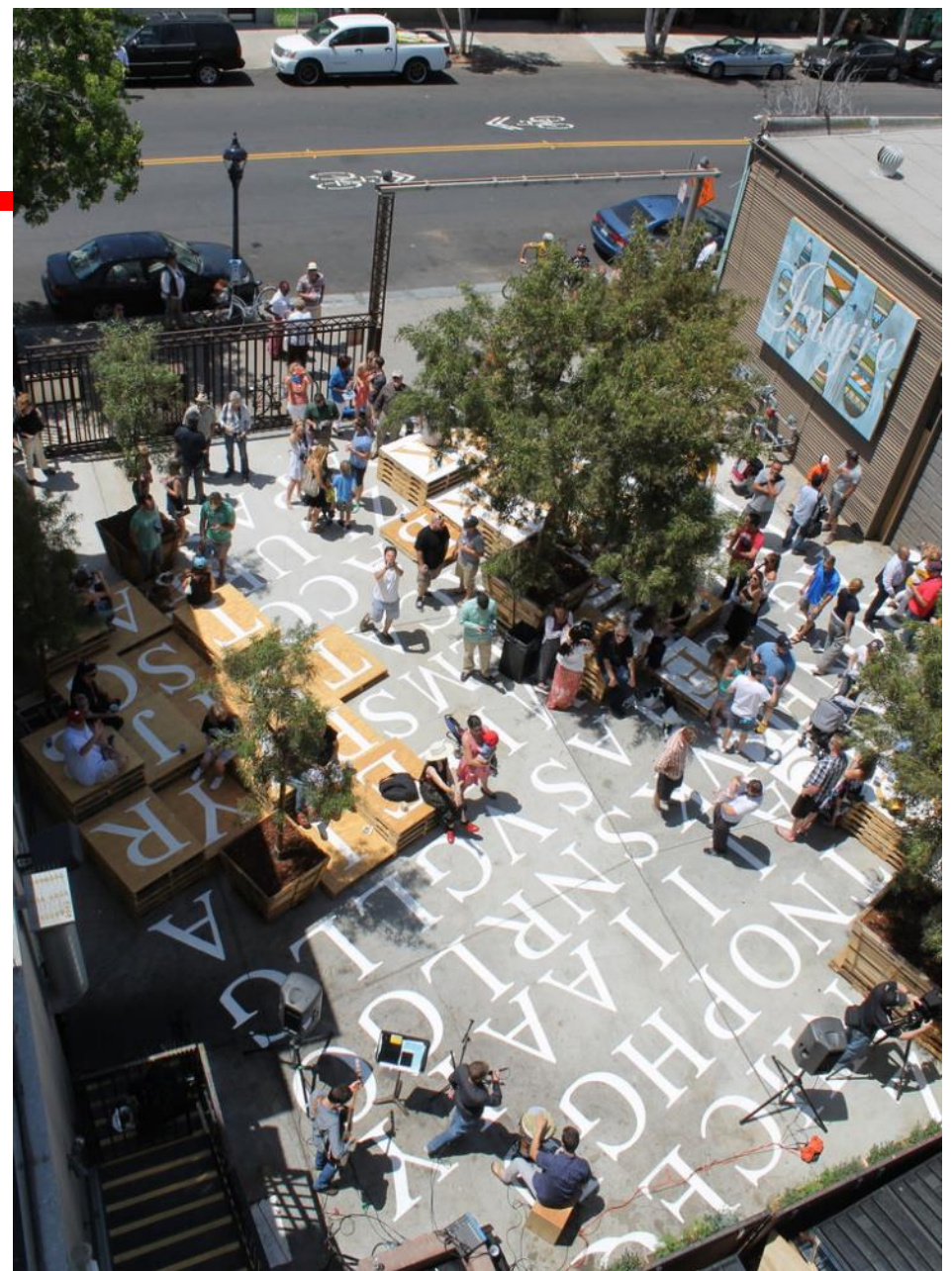


Key Public Realm Typologies – Pocket Parks



Key Public Realm Typologies

Community Spaces



Key Public Realm Typologies – Play is Multi-Generational & Universal Design



Park Opportunities- Existing Birney Joint Use Field

Existing
**Birney
Elementary**
Joint Use
Playing Field



Park Opportunities – Existing Joint Use

Existing
**Roosevelt
Middle
School** Joint
Use Playing
Field



Park Opportunities – Potential Joint Use

Potential
Joint Use
Area at
**Florence
Elementary**



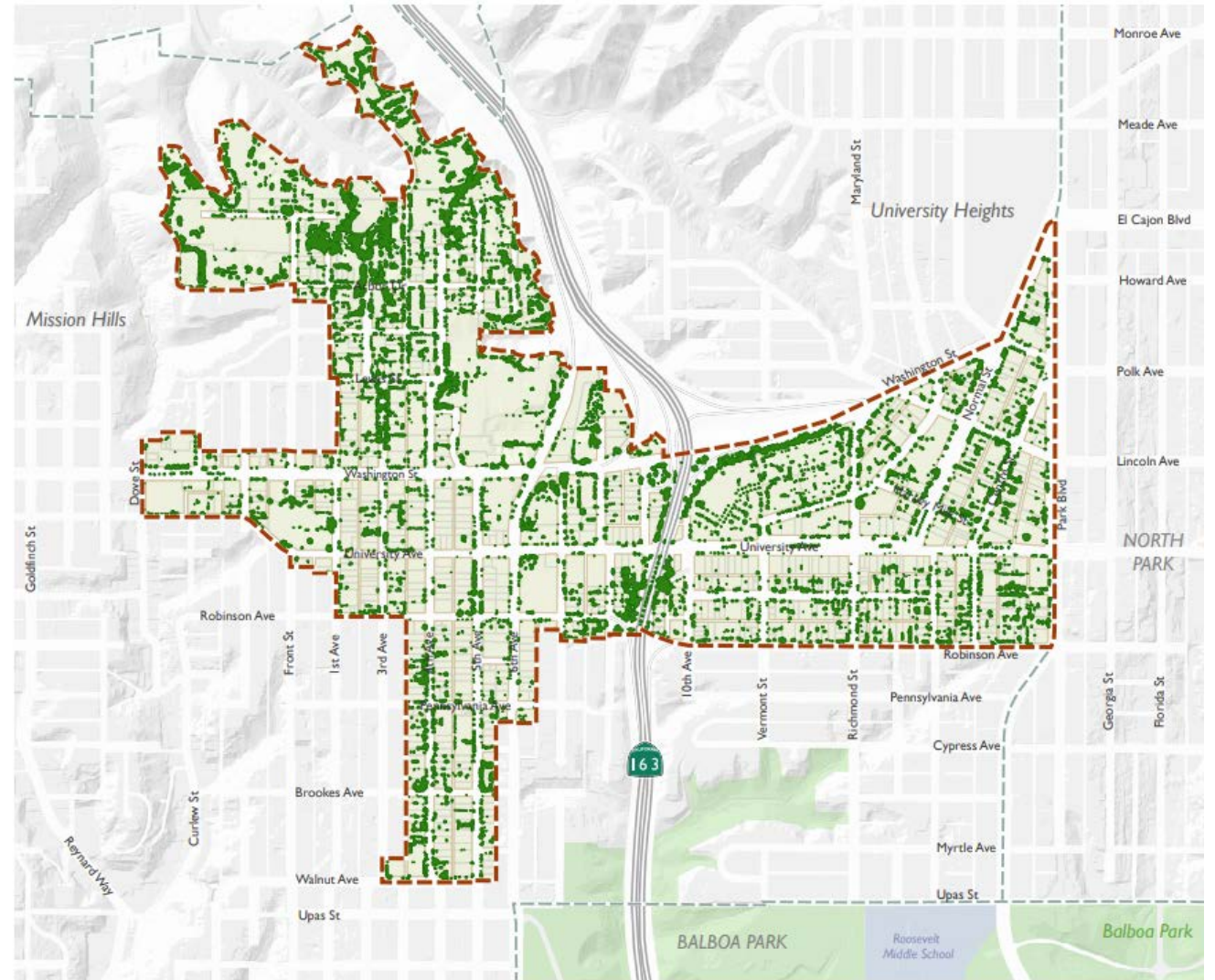
Park Opportunities – Potential Joint Use

Potential
Joint Use
Area &
Gymnasium
at **Grant K-
8 School**



Urban Forest + Urban Greening: Opportunities

- 2020: near the CAP goal of 15% at 14% in Uptown
- CAP goal of 35% in 2035
- Areas for improvement?



Subcommittee Feedback

Amenities & Activities

- **What** are the key community needs – what looked like a good fit, what didn't?



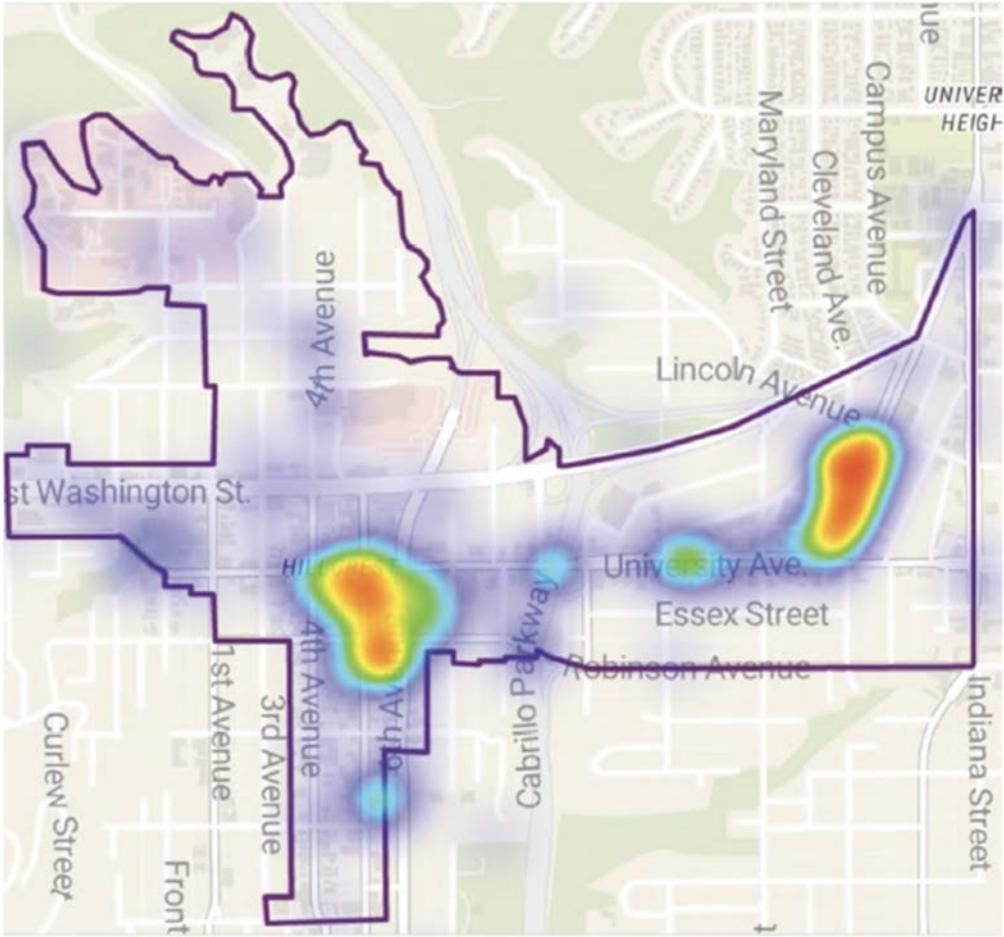
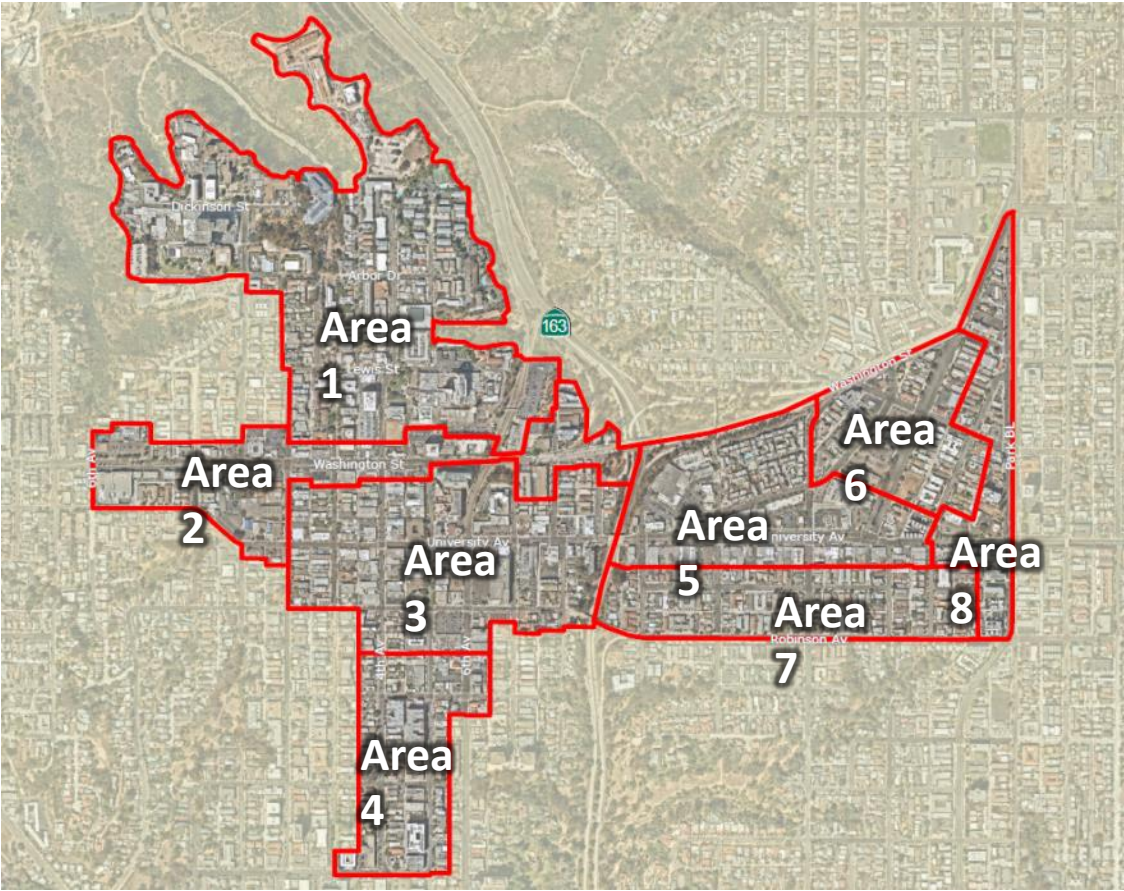
Create Public Spaces

- **Where** are new parks & public spaces needed most?



Subcommittee Feedback

Thoughts on locations? Did we miss anything or anyone?



Next Steps



Next Steps

Refine Public Space Opportunity Areas and Concepts

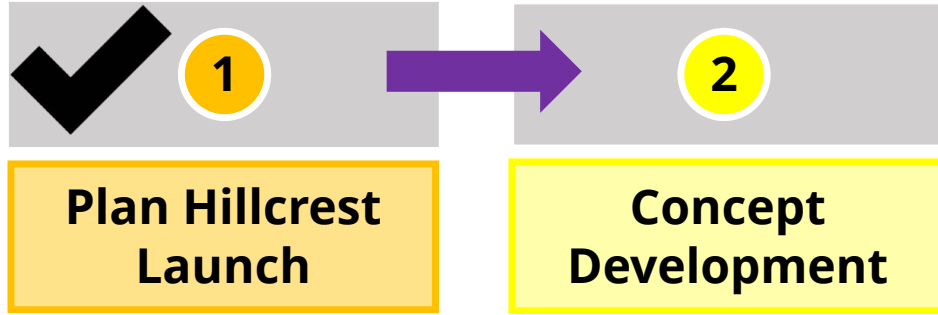
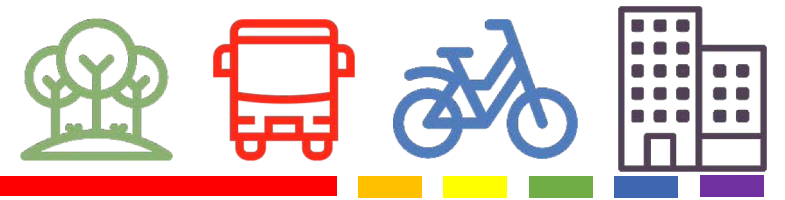
Continue work on LGBTQ+ Historic Context Statement

Present Preliminary Mobility Concepts

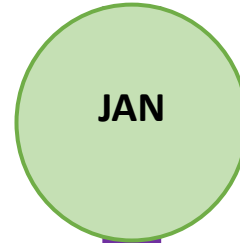
Develop Preliminary Urban Form Concepts



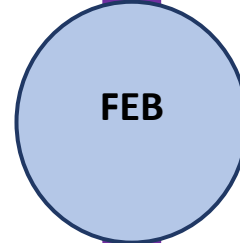
Next Steps – Winter 2020-21



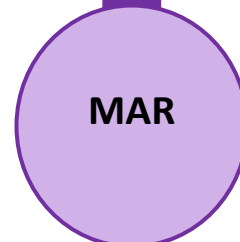
Uptown Planners Subcommittee Upcoming Meeting Topics



Mobility Opportunities



Urban Design and Building Form



Parks and Public Space Refined Concepts



OPPORTUNITIES FOR PUBLIC INPUT

- CPG Subcommittee Meetings
- Online engagements



Plan Hillcrest – How to Stay Involved

Project Webpage

<https://www.planhillcrest.org/>

Contact Us

Michael Prinz, Senior Planner
Planning Department
City of San Diego
Mprinz@sandiego.gov

Shannon Mulderig, Associate Planner
Planning Department
City of San Diego
Smulderig@sandiego.gov



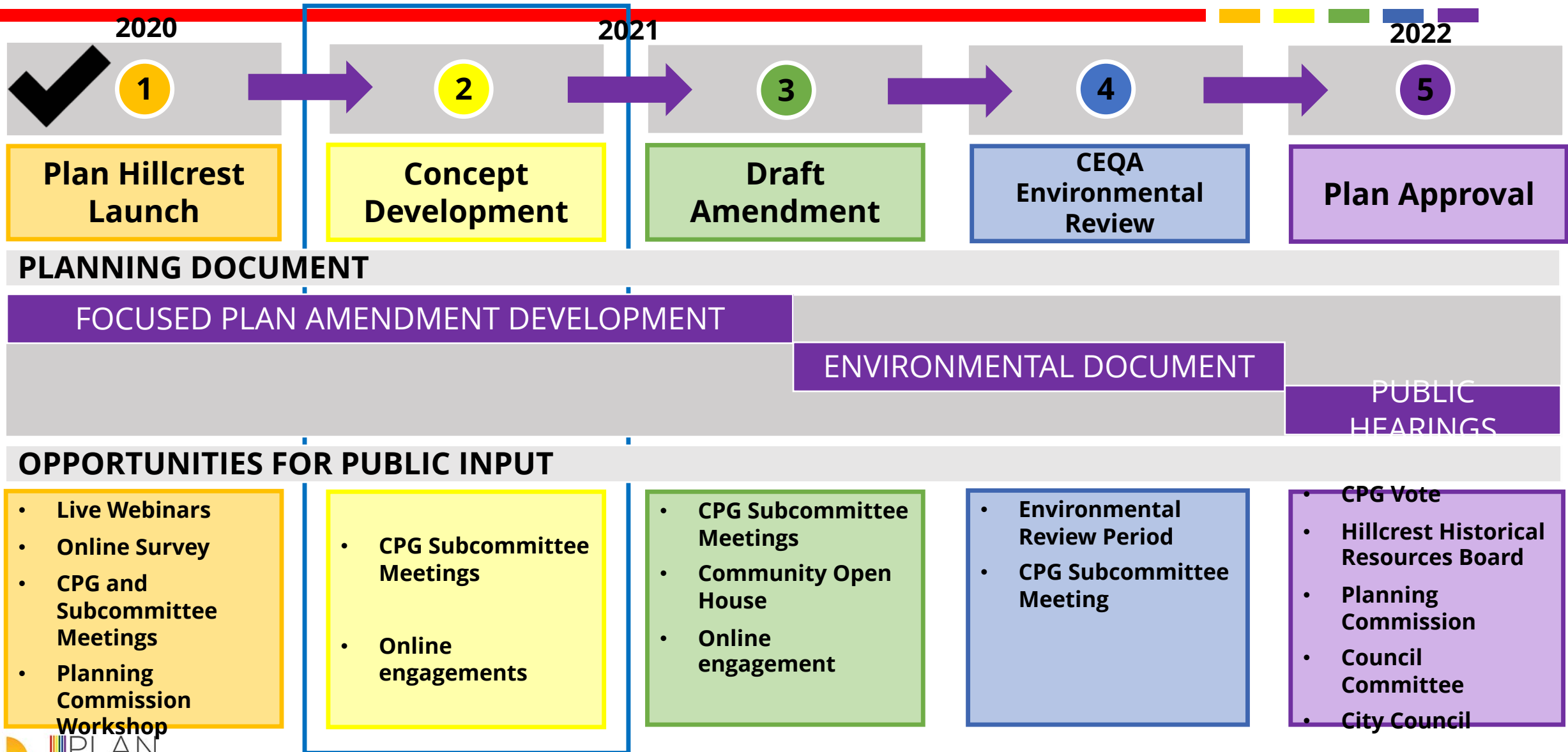


Thank you.

Key Public Realm Typologies - community landmark parks



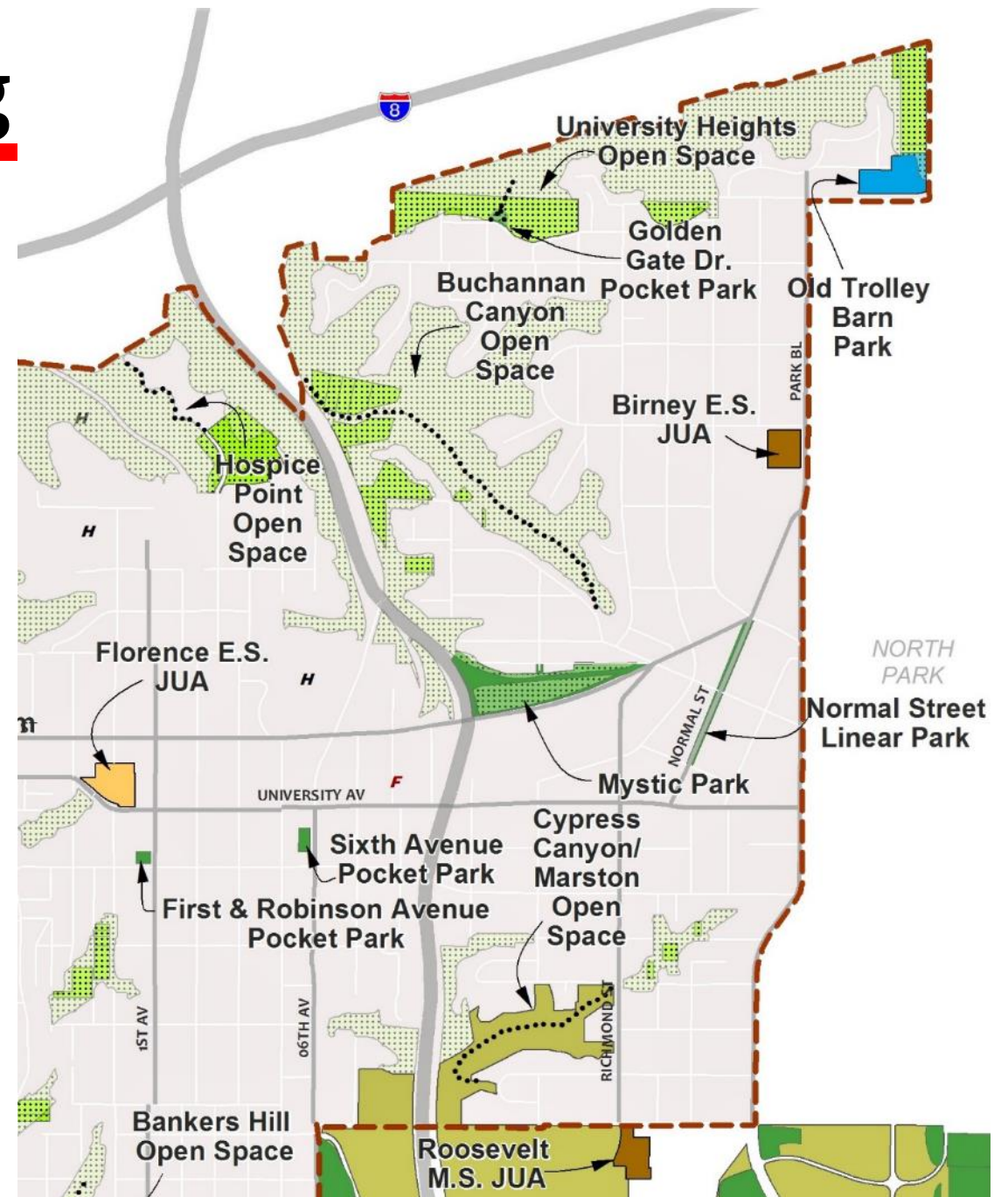
Plan Hillcrest Schedule



Existing Parks Planning

NORTHEAST

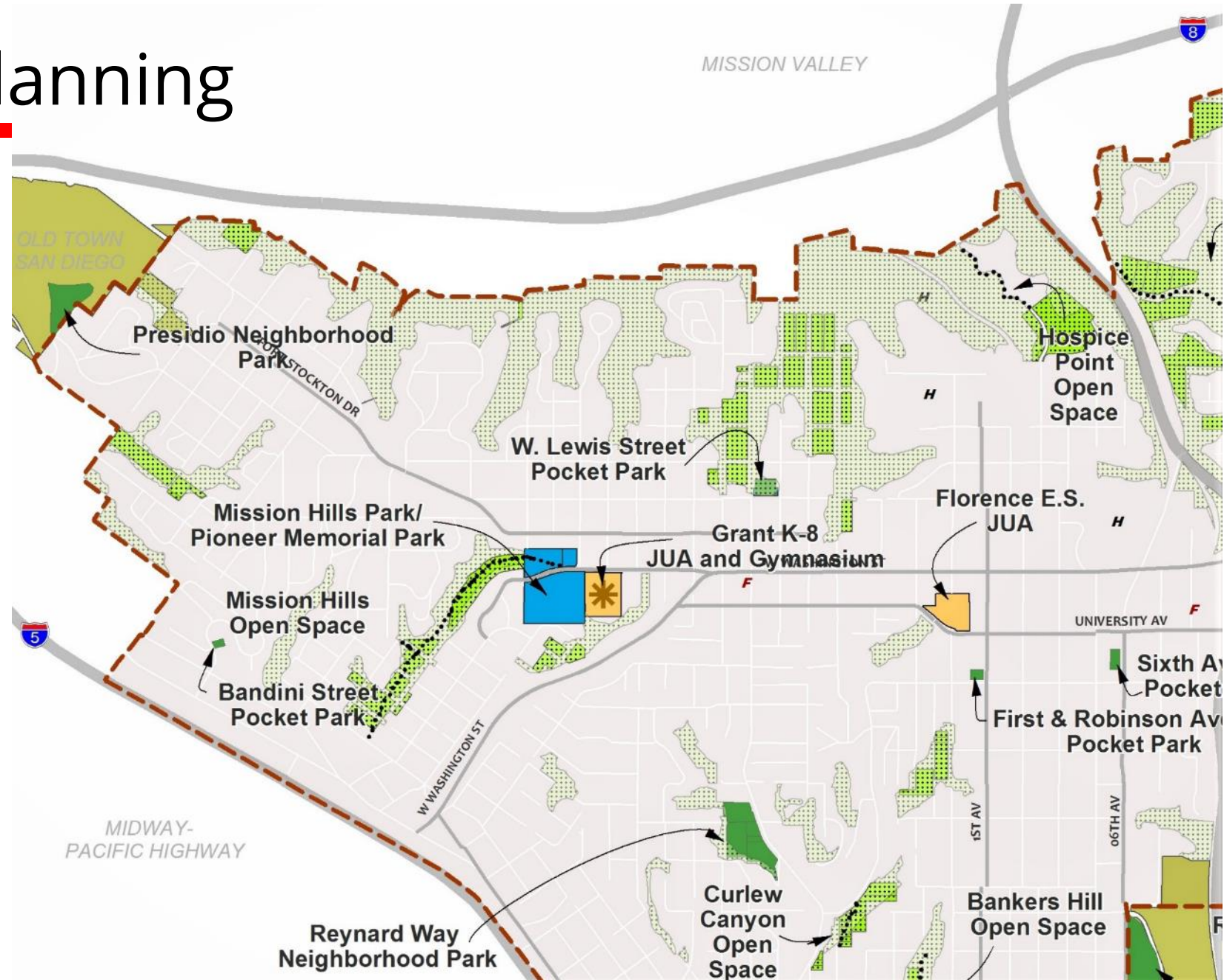
- University Heights Open Space
- Normal Street Promenade
- Sixth Avenue Pocket Park
- First and Robinson Pocket Park



Existing Parks Planning

NORTHWEST

- Grant School Joint-use park/gym
- Reynard Way Neighborhood Park
- Curlew & Bankers Hill Open Spaces
- Pioneer Park
- Presidio Park



Existing Parks Planning

SOUTH

- 6th Avenue Linear Park
- 2 Rec Centers
- Olive Street Mini Park
- West Maple Canyon Pocket Park



Key Public Realm Typologies – Paseos

