

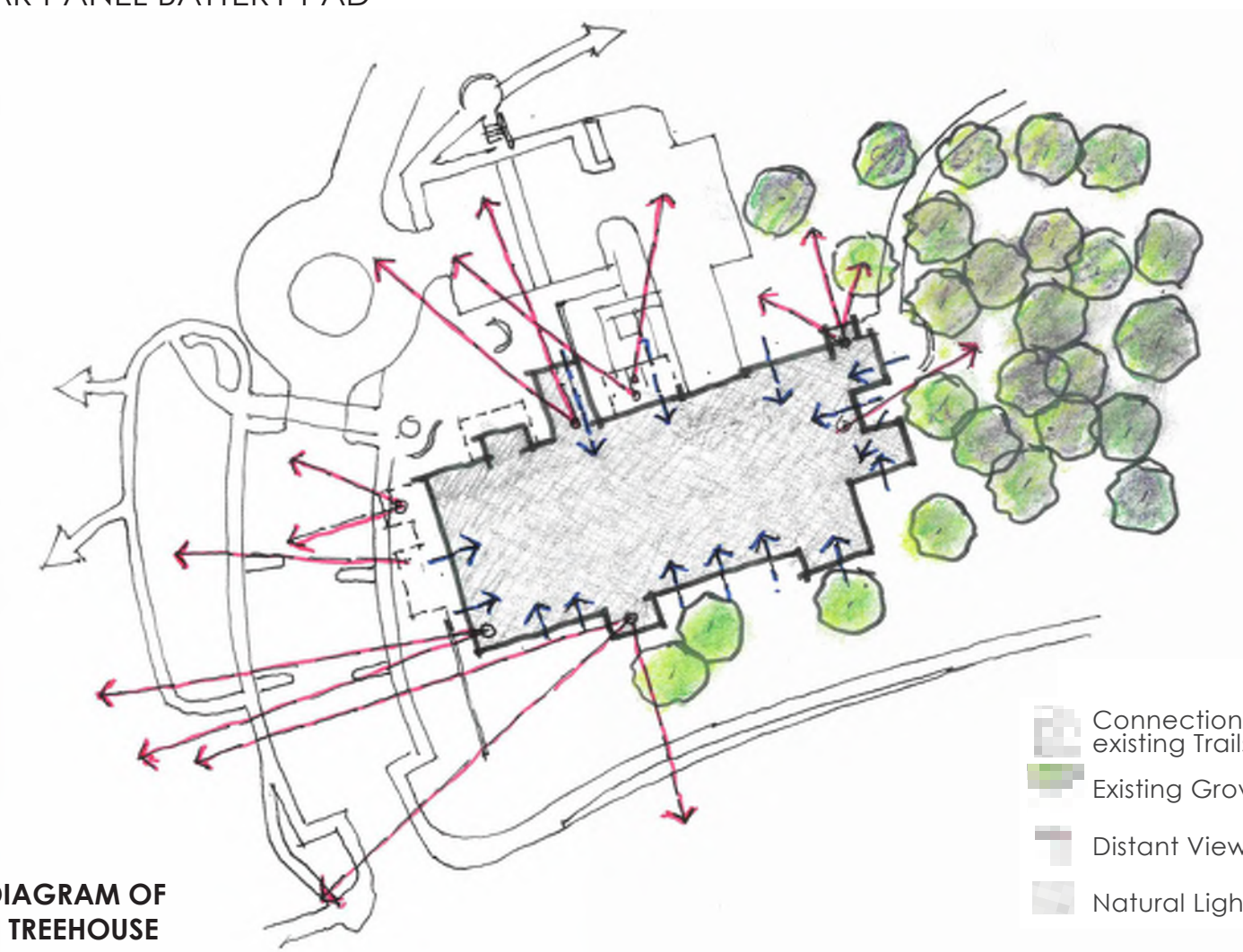


Oak Park Library
Treehouse at the Park



SITE PLAN AND ROOF PLAN

- LEGEND * VALUE ADDED ENHANCEMENTS**
- 1 EXISTING SIDEWALK CONNECTION
 - 2 INTERSECTION TRAFFIC IMPROVEMENTS AND CURB RAMPS
 - 3 DRIVEWAY AND PARKING SPACES WITH SECURITY LIGHTING
 - 4 LIBRARY MONUMENT SIGN
 - 5 ENHANCED ENTRY PLANTING SURROUNDING MONUMENT SIGN
 - 6 CONCRETE SIDEWALK (5' WIDE) WITH SECURITY PATHWAY LIGHTING * ACCESSIBLE PATH FROM COLLEGE GROVE DRIVE TO LIBRARY
 - 7 UNDERGROUND STORM WATER STORAGE TREATMENT & UTILITY CONNECTIONS (AREAS OF DISTURBANCE TO BE REPAIRED/REPLACED)
 - 8 STORM WATER TREATMENT PLANTED BASIN
 - 9 CROSSWALK SPEED TABLE, ENHANCED PAVING
 - 10 ROUND ABOUT PLANTING AREA WITH SPECIMEN NATIVE OAK TREE
 - *11 WAYFINDING SIGN
 - 12 PLAZA DROP-OFF WITH SAFETY LIGHT BOLLARDS
 - 13 ACCESSIBLE PARKING LOT WITH SECURITY LIGHTS AND SHADE TREES
 - *14 ENHANCED COLORED PAVING AT OBSERVATORY PLAZA AND CROSSWALK CONNECTION TO EXISTING PARK TRAILS
 - *15 OBSERVATORY PLAZA AND NORTH TRAILHEAD SIGNAGE
 - 16 BICYCLE PARKING 20 TOTAL, 4 RACKS AT NORTH TRAILHEAD AND 6 BELOW ROOF NORTHWEST BUILDING CORNER
 - 17 CONNECTION TO EXISTING PARK TRAILS, STABILIZED DECOMPOSED GRANITE SURFACING
 - 18 BOOK DROP KIOSK
 - 19 PLAZA WITH COBBLESTONE VENEER LOW WALLS AND ENHANCED PAVING DEPICTING CHOLLAS CREEK WATERSHED PATTERN, EXPOSED BY SANDBLASTED SEEDED AGGREGATES WITH PLAQUE(S) SET IN PAVING DESCRIBING OUR REGION'S WATERSHED
 - *20 INTERIOR | EXTERIOR ART MURALS
 - 21 LIBRARY PUBLIC ENTRANCE
 - 22 MOVABLE COFFEE CART AND OUTDOOR TABLES IN PLAZA
 - 23 LOADING DOCK DRIVEWAY
 - *24 OUTDOOR CHILDREN'S GATHERING SPACE WITH LOW COBBLESTONE WALL, STABILIZED DECOMPOSED GRANITE SURFACING AND SECURITY LIGHTING
 - *25 LIBRARY STAFF GARDEN WITH CONCRETE PAVING, TABLES AND GARDEN BENCHES
 - 26 TRASH ENCLOSURE
 - 27 ELECTRICAL UTILITY PAD
 - *28 OVERLOOK POCKET PARK WITH PICNIC TABLE, GARDEN BENCHES, INTERPRETIVE SIGNAGE AND SECURITY LIGHTING
 - 29 STABILIZED DECOMPOSED GRANITE TRAIL, 4' MINIMUM WIDTH
 - 30 EXISTING TREES / LARGE NATIVE SHRUBS TO BE PROTECTED
 - 31 PLANTING WITH TREES AND SOUTHERN CALIFORNIA NATIVE PLANTS, TYPICAL FOR NEW PLANTING AREAS
 - 32 CONCEPTUAL SOLAR CANOPY LAYOUT TO BE COORDINATED WITH AND PROVIDED BY CITY VENDOR. (SOLAR ZONE)
 - 33 EV (PROVIDED ELECTRICAL CHARGING STATION PARKING SPACES) TWO DESIGNATED PARKING SPACES FOR CITY TRUCKS.
 - 34 EVR (FUTURE EV READY PARKING SPACES)
 - 35 SKYLIGHT - TRANSLUCENT GLASS
 - 36 SOLAR PANEL BATTERY PAD



CONCEPT DIAGRAM OF CHILDREN'S TREEHOUSE



1 Entry at College Grove Drive expressing the community identity of the building.



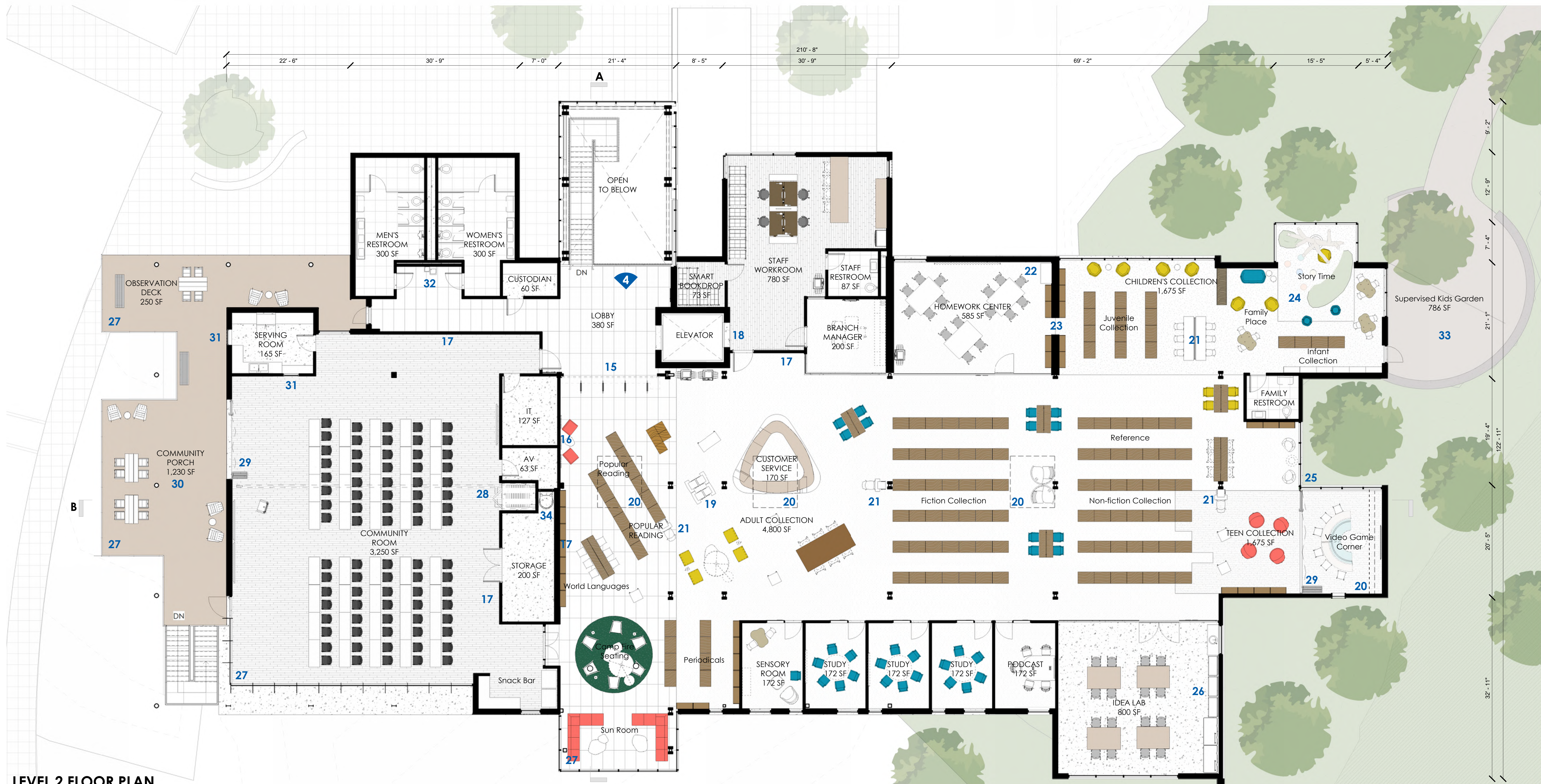
2 Recessed into the Plaza, an aerial view of Chollas Creek watershed is etched into the concrete symbolizing unity with the park.



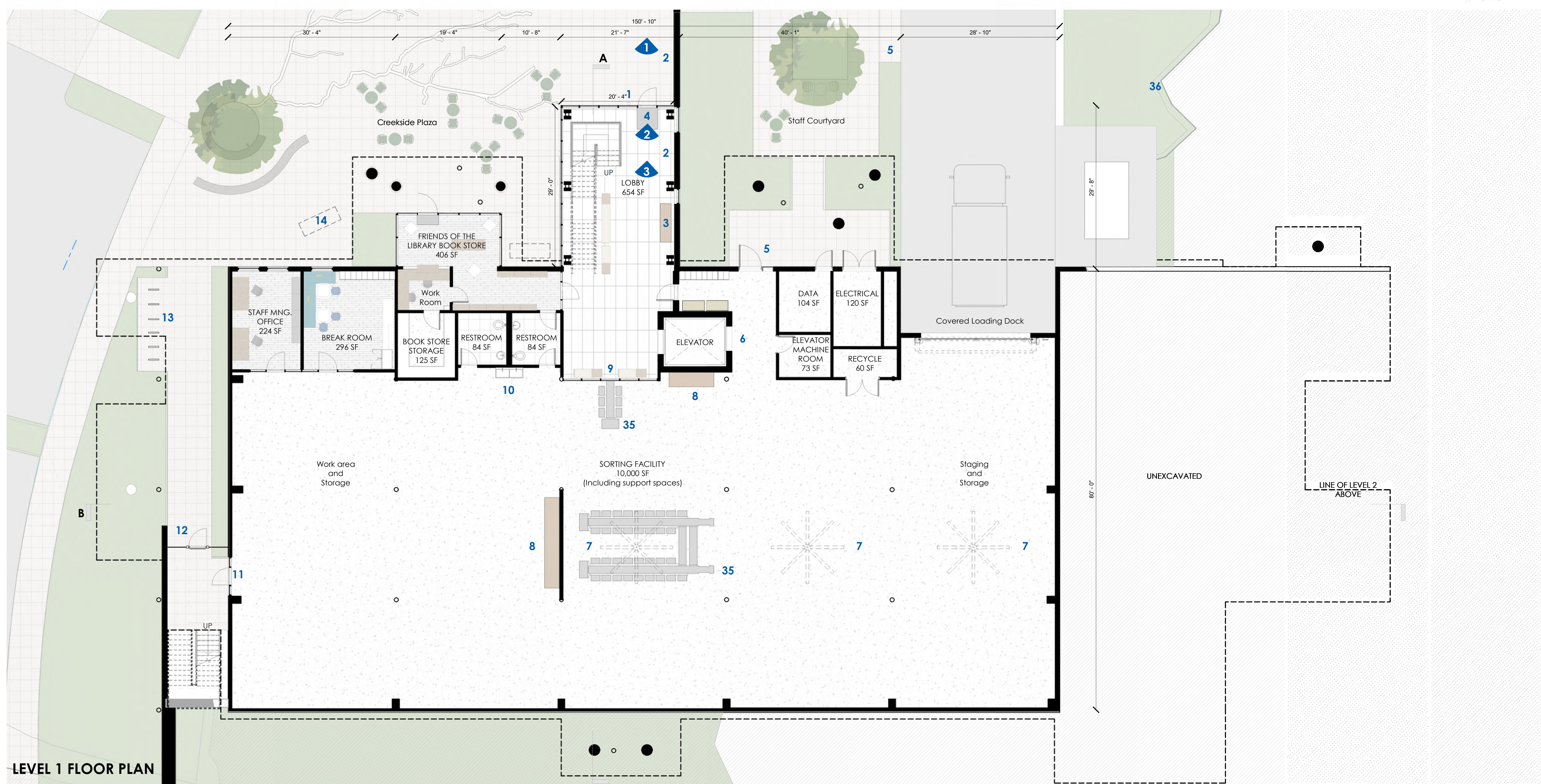
3 A multi-purpose Pocket Park serves as a link between the existing trails, the neighborhood and the library.



4 An outdoor gathering space off of the Children's area exit is nestled into the hillside and grove.



LEVEL 2 FLOOR PLAN



LEVEL 1 FLOOR PLAN

- LEGEND * VALUE ADDED ENHANCEMENTS**
- 1 ADA DOOR OPENER
 - 2 INTERIOR | EXTERIOR ART MURALS
 - 3 ARTIFACT DISPLAY CASE
 - 4 ENTRY WALK-OFF MAT
 - 5 STAFF DEDICATED ENTRY
 - *6 ELEVATOR SERVICE ACCESS TO STAFF WORKROOM
 - *7 OVERHEAD FANS
 - 8 STAFF WORK BENCH
 - *9 PATRON INTERACTION WITH SORTING FACILITY/ BOOK DROP
 - 10 STAFF HAND SINK
 - 11 SECURED STOREFRONT ENTRY WITH OPERABLE TRANSOM
 - 12 LOCKED GATE ACCESS
 - 13 BICYCLE RACKS
 - 14 MOVABLE COFFEE STATION
 - 15 RFID & ROLL-UP SECURITY GATE
 - 16 DONOR WALL
 - 17 PUBLIC ART DISPLAY
 - 18 SERVICE ACCESS TO SORTING & STAFF ENTRY
 - 19 SELF-CHECKOUT KIOSKS
 - *20 SKYLIGHT ABOVE
 - 21 OPAC STATIONS
 - 22 AV STORAGE CLOSET
 - 23 PORTAL TO HOMEWORK CENTER
 - *24 STORY TIME TREE & SEATING MOUNDS
 - *25 NATURAL LIGHT TEEN ALCOVE
 - 26 IDEA LAB TOOLS FOR RENT
 - 27 VIEW TO DOWNTOWN SAN DIEGO
 - 28 MOVABLE PARTITION
 - *29 FOLDING GLASS DOOR
 - 30 LARGE COMMUNITY PORCH WITH RFP REQUIREMENTS FOR POWER, AV & SOUND SYSTEM
 - 31 COMMUNITY FOOD SERVICE WINDOW
 - 32 DRINKING FOUNTAIN
 - *33 CHILDREN'S AREA PATIO
 - 34 ROOF ACCESS LADDER
 - 35 SORTING MACHINE
 - 36 SOLAR PANEL BATTERY PAD



1 The multi-cultural mural wall, curated by local artists draws you into the main entrance of the Library. A place that will serve the community.



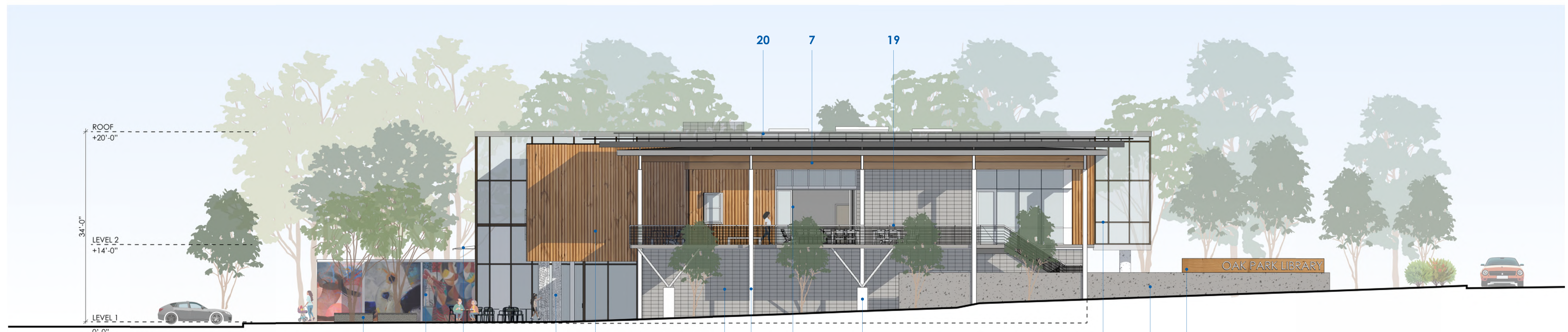
2 Upon entering, an interactive slate board for children and children at heart to express themselves welcomes you to the lobby.
3 The first level lobby will be a hub of activities with a community bulletin board and an opportunity to look into the sorting facility.



4 A view from the second floor, displaying the art wall coming into the lobby and District 7 historical mural in the foreground.



SOUTH ELEVATION



WEST ELEVATION

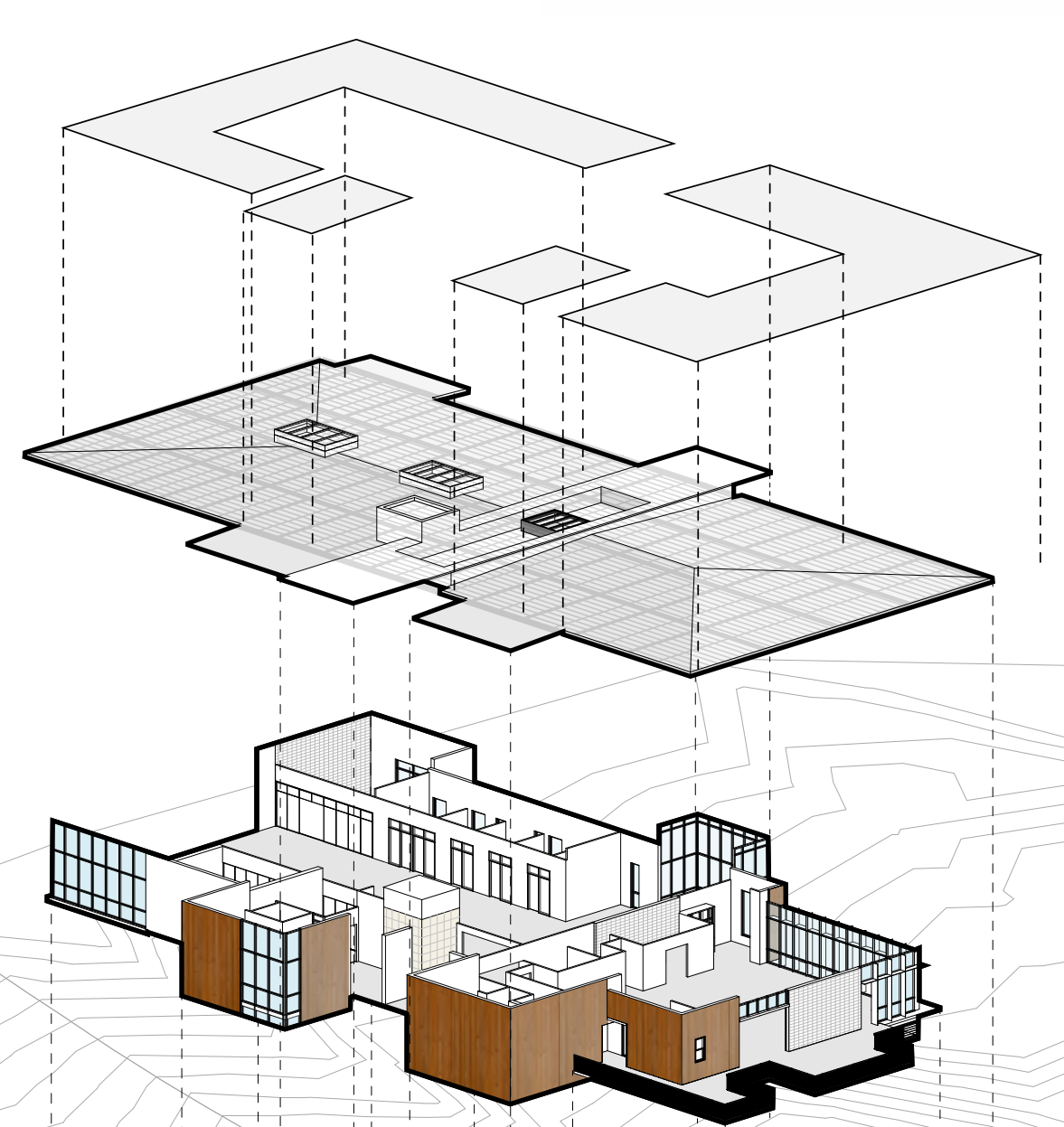
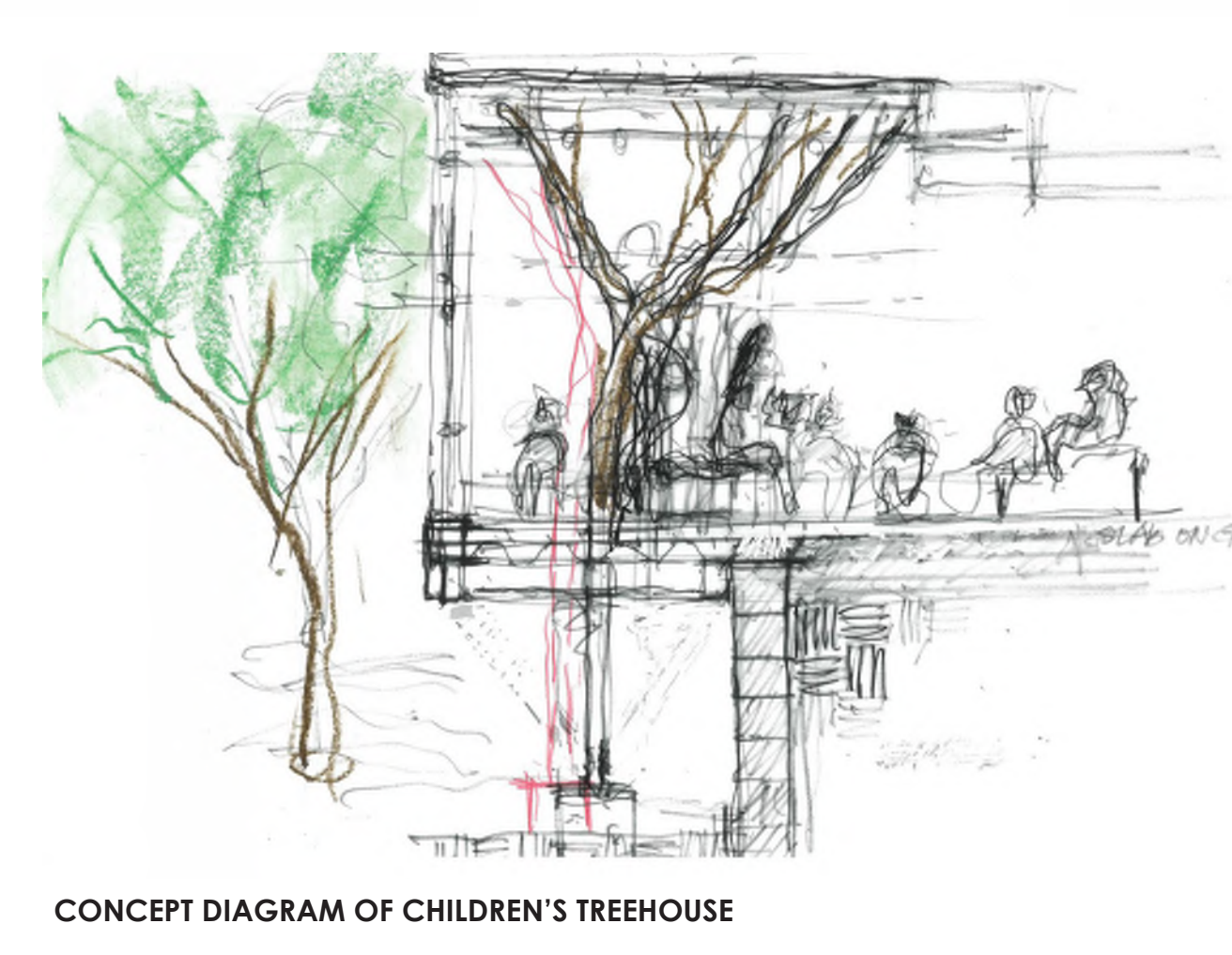


NORTH ELEVATION



EAST ELEVATION

- LEGEND * VALUE ADDED ENHANCEMENTS**
- *1 EXTERIOR COMPOSITE WOOD STYLE PANELING
 - 2 CMU WALL - STACKED BOND APPEARANCE
 - 3 EXTERIOR STUCCO, PAINTED GREY
 - 4 C.J.P. CONCRETE WALL
 - *5 RETAINING STONE WALL, MATCH PARK CONTEXT SITE WALLS
 - *6 INTERIOR | EXTERIOR ART MURALS
 - *7 HEAVY TIMBER BEAMS
 - *8 C.J.P. CONCRETE COLUMN - FORMED WORDS
 - 9 C.J.P. CONCRETE COLUMN
 - 10 STEEL COLUMN - WHITE FINISH
 - *11 CONCRETE AND STEEL "TREE COLUMN"
 - 12 STEEL MOMENT FRAME - WHITE FINISH
 - 13 ALUMINUM MULLION - CHAMPAGNE
 - *14 ALUMINUM VERTICAL FINS - WHITE
 - 15 SHEET METAL OVERHANG
 - 16 ROLL-UP GARAGE DOOR WITH LITES
 - *17 FOLDING GLASS DOOR TO COMMUNITY PORCH
 - 18 LIBRARY SIGNAGE
 - 19 STEEL GRATING AT RAILING
 - 20 CONCEPTUAL SOLAR CANOPY LAYOUT TO BE COORDINATED WITH AND PROVIDED BY CITY VENDOR. (SOLAR ZONE)



SUSTAINABILITY
PV PANEL SYSTEM ON ROOF AND SEPARATE CAR SHADE CANOPY (BY CITY VENDOR)

THE ROOF TRELLIS
EXPOSED WOOD TIMBER COFFERED ROOF SYSTEM WITH SKYLIGHTS; BRINGING NATURAL WARMTH AND LIGHT INTO THE BUILDING.

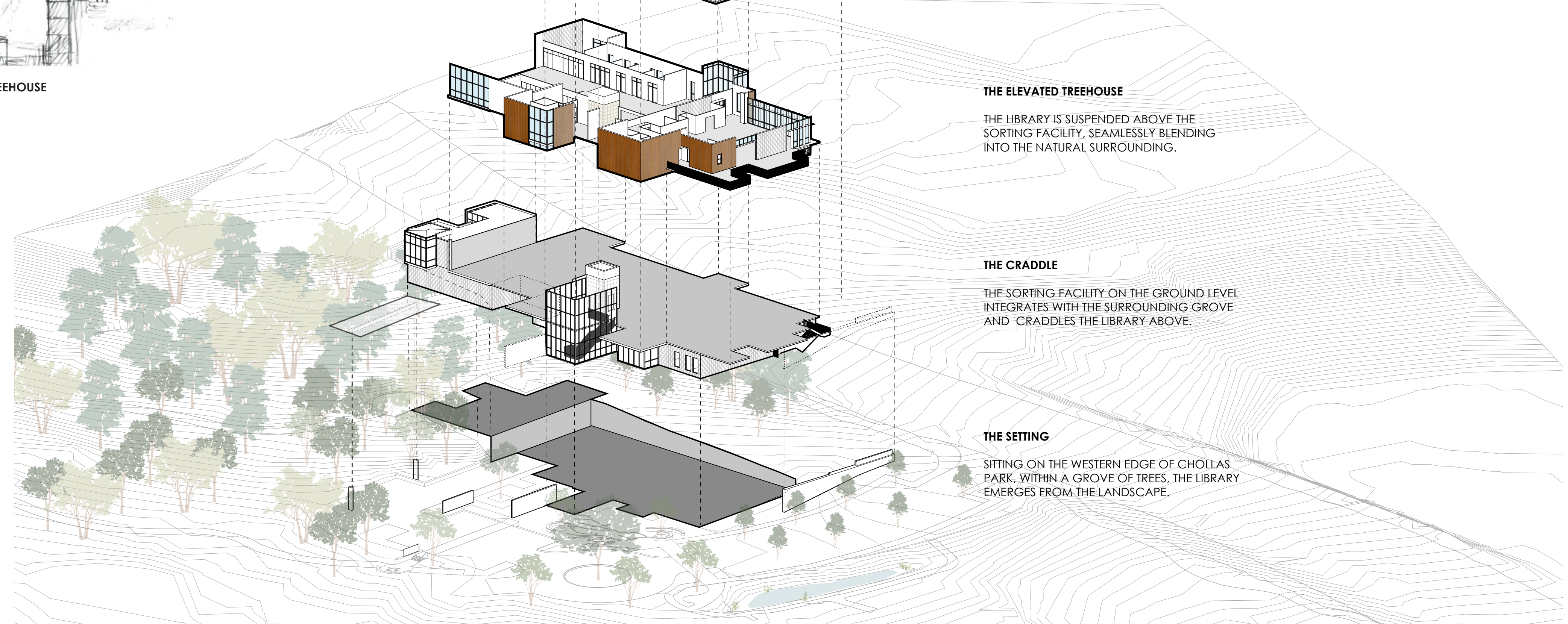
THE ELEVATED TREEHOUSE
THE LIBRARY IS SUSPENDED ABOVE THE SORTING FACILITY, SEAMLESSLY BLENDING INTO THE NATURAL SURROUNDING.

THE CRADLE
THE SORTING FACILITY ON THE GROUND LEVEL INTEGRATES WITH THE SURROUNDING GROVE AND CRADLES THE LIBRARY ABOVE.

THE SETTING
SITING ON THE WESTERN EDGE OF CHOLLAS PARK, WITHIN A GROVE OF TREES, THE LIBRARY EMERGES FROM THE LANDSCAPE.



Connections from the existing trails frame views of the Library as you approach.





NORTH - SOUTH BUILDING SECTION PERSPECTIVE A



EAST - WEST BUILDING SECTION PERSPECTIVE B

LEGEND * VALUE ADDED ENHANCEMENTS/ SUSTAINABILITY FEATURES

- *1 STACK VENTILATION
- *2 CARBON SEQUESTERING: HEAVY TIMBER
- *3 LARGE OVERHANG ON WEST FACADE
- *4 THERMAL MASS: AT FLOOR AND CMU WALLS
- 5 EV CHARGING STATIONS
- 6 SOLAR ENERGY
- *7 STORM WATER TREATMENT PLANTED BASIN
- *8 NATURAL DAYLIGHTING
- *9 MECHANICAL WELL WITH VRF UNITS



1 Bookshelves draw users into the library with popular readings highlighted by the skylight with a Donor's wall to the right.



2 The warm and inviting heavy timber wood ceiling with skylights above highlights the customer service desk, adult collection, and manager's office with soft natural light.



3 In the Juvenile collection area, a large north facing window gathers indirect natural light and connects the viewer with nature.



4 Bringing the grove inside, a treehouse emerges creating a contemplative and enchanting storytelling space for children to lay under the tree sculpture and look up at the stars.



5 Nestled into the grove, the dappled light creates a cafe like environment creating a unique identity for the teen's space.



6 With access to tools like 3d printers, laser cutters, embroidery machines and more, the Maker Lab is where ideas grow into reality.



7 Soft natural light from the skylights are filtered through the heavy timber ceiling above the Adult collection work stations.



8 A comfortable space for periodicals and casual reading with a distant downtown San Diego skyline view.



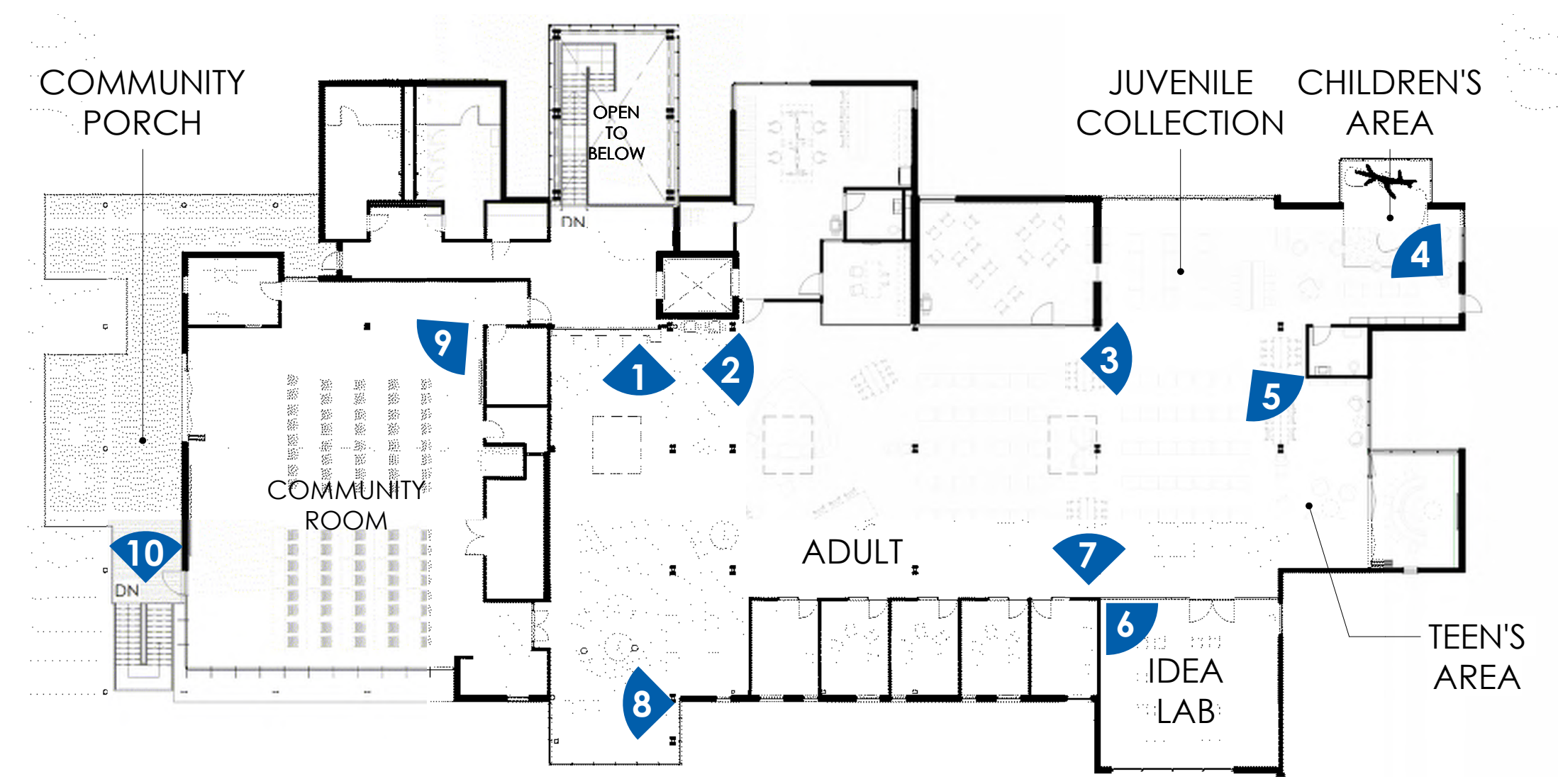
9 In the community room, connection to the outdoors with large openings to the community porch bring in natural light and fresh air.



10 A large multi-purpose community porch oriented towards the distant western views of the Downtown San Diego skyline.



11 At the north trailhead is a small observatory plaza with opportunities for after-hours stargazing.



LEVEL 2 - KEY PLAN

