

# City of San Diego Alvarado 2<sup>nd</sup> Extension Pipeline Project

Octavio Chiquete, City of San Diego  
Rika Okino , Kennedy Jenks  
Mike Wykosky, Kennedy Jenks  
Hannah Blome, Katz & Associates

January 27, 2025



# Background and Need

- City provides reliable water service every day to San Diego residents through hundreds of miles of pipelines
- Water infrastructure, like pipelines, needs maintenance and replacement as it ages
- Some pipelines in the City are more than 100 years old

# SD Project Benefits

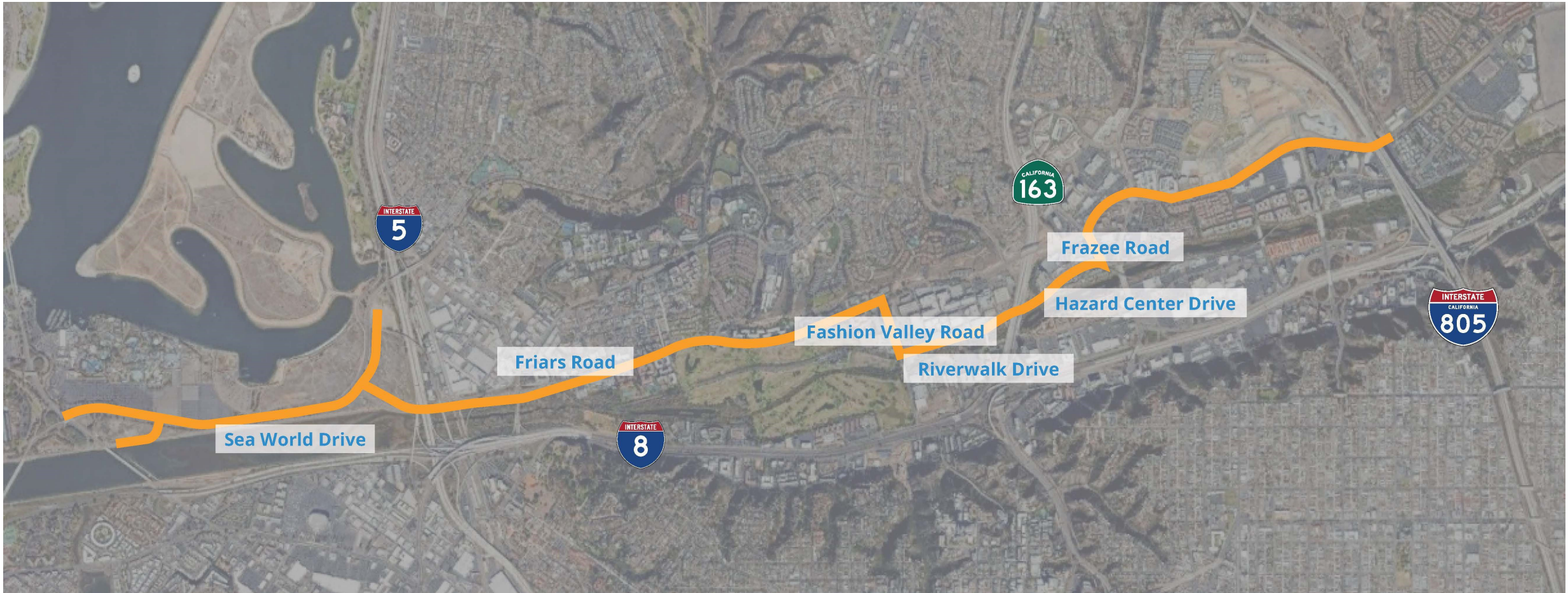
- Improve our water reliability and distribution to coastal communities
- Reduce reliance on aging pipelines
- Minimize risk for costly water main breaks by making a smart investment proactively
- Enhance community accessibility in Mission Valley area-ADA curb ramps and repaving



Copyright: 2016 Mian Kovacevic



# SD Project Corridor



# SD Project Details

- New 24 and 48inch diameter transmission mains installed along Friars Road, between West Mission Bay Drive and-B05
- New 36inch transmission branch installed connecting in Napa Street for future connection to the Morena Pipeline
- Replace 12 and 16inch diameter pipelines along Friars Road and along Sea World Drive
- New pressure reducing station installed in Cityed parking lot







# Project Detailed Alignment



**LEGEND**

- 12-inch Proposed Water Main (PVC)
- - - 12-inch Existing Water Main to be replaced/abandoned (AC)
- 16-inch Water Main to be replaced
- 24-inch Alvarado 2nd CML&C Water Main
- 48-inch Alvarado 2nd CML&C Water Main
- 36-inch Water Main Branch (will connect to Morena PS Pipeline)
- Pressure Regulating Station (PRS)

# SD Project Schedule and Working Hours

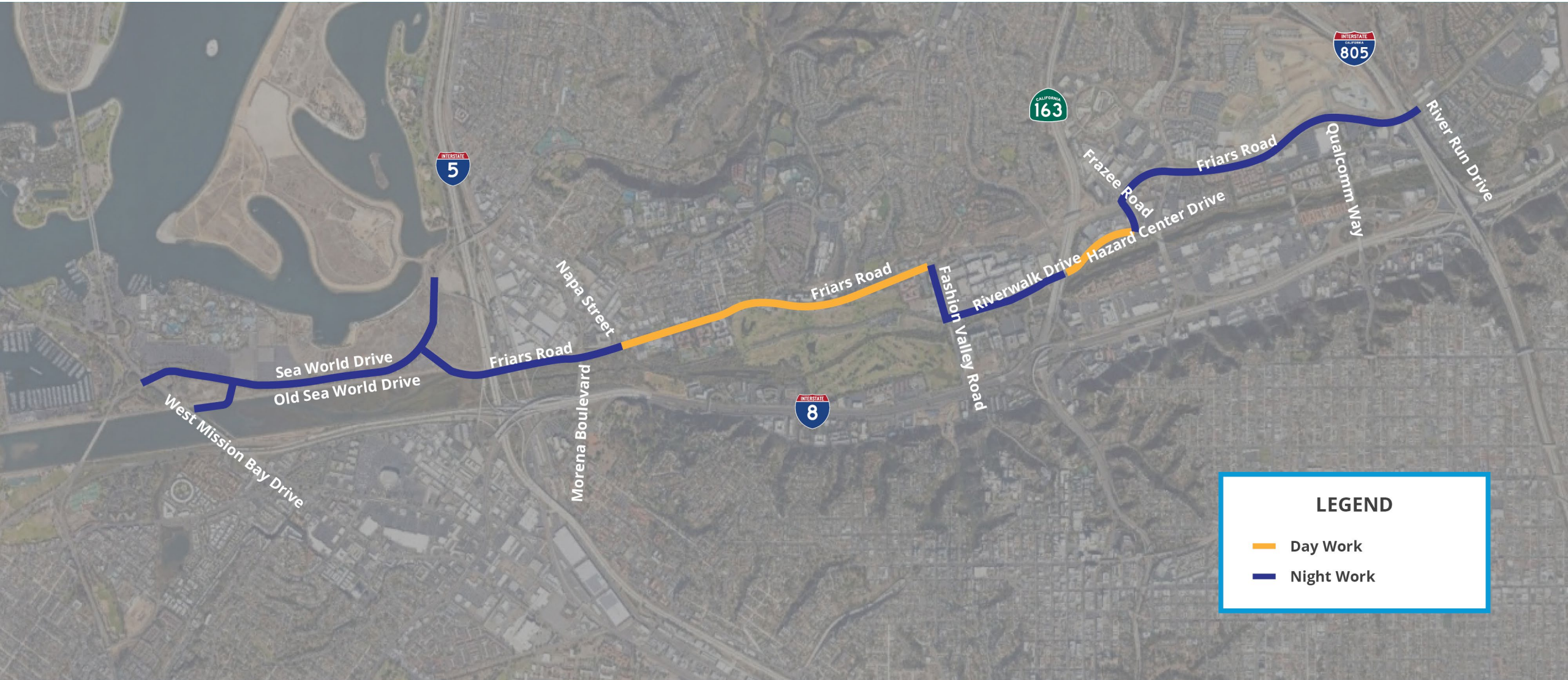
- Underground utility location work is ongoing
- Pipeline installation estimated to begin April 2022
  - Starting near Friars Road and Frazee Road, moving east
- Working hours:
  - Daytime: 8:30 a.m. to 3:30 p.m. Mon-Fri.
  - Nighttime: 8:00 p.m. to 6:00 a.m. Sat-Thurs.
- Estimated Completion: 2028







# Day Work vs. Night Work



**LEGEND**

- Day Work
- Night Work



# SD What You Can Expect

- Traffic maintained on West Mission Bay Drive and Friars Road where safe
- Lane closures around active work zones
- Access maintained for homes and businesses
- Temporary paving installed after pipeline installation
  - Final paving with bike lanes will follow





SeaWorld San Diego

Sea World Drive

San Diego River

West Mission Bay Drive



Friars Road



### Sea World Drive from W. Mission Bay Drive to I-5

- Replacing 12-inch distribution main
- Constructing 24-inch water transmission main (to Friars Road)
- Pipeline will be on the south side of Sea World Drive
- One lane closure - two-way traffic maintained
- Coordination with SeaWorld and Caltrans
- Signage for beach communities





Sea World Drive



Morena Boulevard

Napa Street

San Diego Police Department  
Western Division

Morena/Linda Vista  
Trolley Station

Mission Valley YMCA

Friars Road

San Diego River



### Friars Road from Sea World Drive to Napa Street

- 24-inch transmission main
- Pipeline will be on the south side of Friars Road
- Two-way traffic maintained
- Bike lane detoured
- Access to homes and businesses maintained
- MTS and Caltrans coordination



University of San Diego

The Bluffs

Fashion Valley Road

Woodsprings Apartments

Friars Road

Napa Street

The Courtyards

Presidio Place

Riverwalk Golf Club

Mission Valley YMCA

### Friars Road from Napa Street to Fashion Valley Road

- 48-inch transmission main
- 16-inch distribution main replacement
- Pipeline will be on the south side of Friars Road
- Two-way traffic maintained
- Access to homes and businesses maintained
- Bike lane detoured







Friars Road

Frazee Road

Hazard Center

Hazard Center Drive

Fashion Valley Mall

Fashion Valley Road

Riverwalk Drive

Fashion Valley Transit Center



**Fashion Valley Road, Riverwalk Drive, Hazard Center Drive and Frazee Road**

- 48-inch transmission main
- 16-inch distribution main (Fashion Valley Road)
- Two-way traffic maintained
- Coordination with Fashion Valley Mall and Hazard Center
- Access to MTS trolley station maintained
- Alternate access routes will be utilized





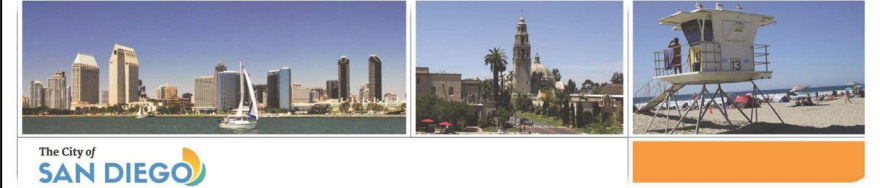
### Friars Road from Frazee Road to I-805

- 48-inch transmission main
- 16-inch distribution main replacement (Frazee Road to east of Mission Center Road)
- Pipeline will be on the north side of Friars Road
- One-way eastbound traffic maintained
- On and off ramps closed for westbound traffic
- Access maintained for businesses and Civita community



# SD Community Outreach

- Ongoing communications throughout construction
  - Door hanger notifications in advance of work
  - Project phone and email line to field inquiries
  - Continued presentations at community groups
  - Email blasts in advance of new traffic control setup
- Close coordination with other City and agency teams scheduling and streamlining



The City of  
**SAN DIEGO**

## Alvarado 2nd Pipeline Extension Project

### Background

The City of San Diego provides water to 1.4 million residents each and every day through hundreds of miles of pipelines, and these underground pipelines need maintenance and replacement as they reach the end of their lifespans. The **Alvarado 2nd Pipeline Extension Project** will extend and replace aging water pipelines to improve water reliability and distribution in San Diego, focusing on efficient water delivery to the City's coastal communities.

### Benefits

**Reliable/Environmentally Sustainable:** Provides new, reliable water pipelines to ensure secure drinking water service for the future.

**Replaces Aging Infrastructure:** Replaces miles of aging water distribution mains.

**Smart Investment:** A proactive move to ensure a reliable pipeline system and minimize risk for costly breaks.

**Efficient Delivery:** Expands the network of water distribution to coastal communities in San Diego.

**Project Manager:** Jericho Gallardo

**Project Engineer:** Kennedy/Jenks Consultants

### Project Components and Location

The Alvarado 2nd Pipeline Extension Project includes the construction of approximately 10 miles of water mains in the Mission Valley and Mission Bay areas. New 24 and 48-inch transmission mains will be installed along Friars Road, between Interstate 805 (where it connects to the existing Alvarado Pipeline) and West Mission Bay Drive (where it connects to the recently installed Pacific Beach Pipeline). A new 36-inch transmission main branch will be installed at Napa Street for future connection to the Morena Pipeline, which will be constructed after this project. A new pressure reducing station will be installed on Napa Street in a City-owned parking lot. A 12-inch distribution main will be replaced along Sea World Drive, between Interstate 5 and West Mission Bay Drive. Additionally, a 16-inch distribution main will be replaced along Friars Road where it is parallel to the new Alvarado 2nd Pipeline transmission main.

### Project Schedule

**Mid-2024:** Contractor Selected and Construction Begins

**2028:** Construction Completion



The primary project location is in the Mission Valley and Mission Bay areas of San Diego.

For more information about this project: 619-533-4199 | [alvarado2nd@sanidiego.gov](mailto:alvarado2nd@sanidiego.gov) | [sandiego.gov/cip/projectinfo/featuredprojects/alvarado](http://sandiego.gov/cip/projectinfo/featuredprojects/alvarado)



# Contact Us

[Alvarado2nd@sandiego.gov](mailto:Alvarado2nd@sandiego.gov)

(619) 533-4199

[sandiego.gov/cip/Alvarado2nd](https://sandiego.gov/cip/Alvarado2nd)



Scan to sign up for  
project e-blasts

Select "Project  
Updates: Alvarado 2<sup>nd</sup>  
Pipeline Extension"