

Pure Water San Diego Morena Conveyance South and Middle and Conveyance Bike Lanes Project Update

Clairemont Mesa Planning Group

November 19, 2024

SD Phase 1 Projects



MBC	Metropolitan Biosolids Center
NCWRP	North City Water Reclamation Plant & Flow Equalization Basin
NCPWF	North City Pure Water Facility & Pump Station
NCPWP	North City Pure Water Pipeline, Dechlorination Facility and Subaqueous Pipeline

 **PUMP STATION**
 **WATER FACILITY**
 **BIOSOLIDS**

Morena Pump Station & Pipelines

Miramar Reservoir

Miramar Water Treatment Plant

North City Pure Water Pipeline

NCPWF & Pump Station

NCWRP Expansion

MBC Improvements



Morena Conveyance South & Middle Alignment



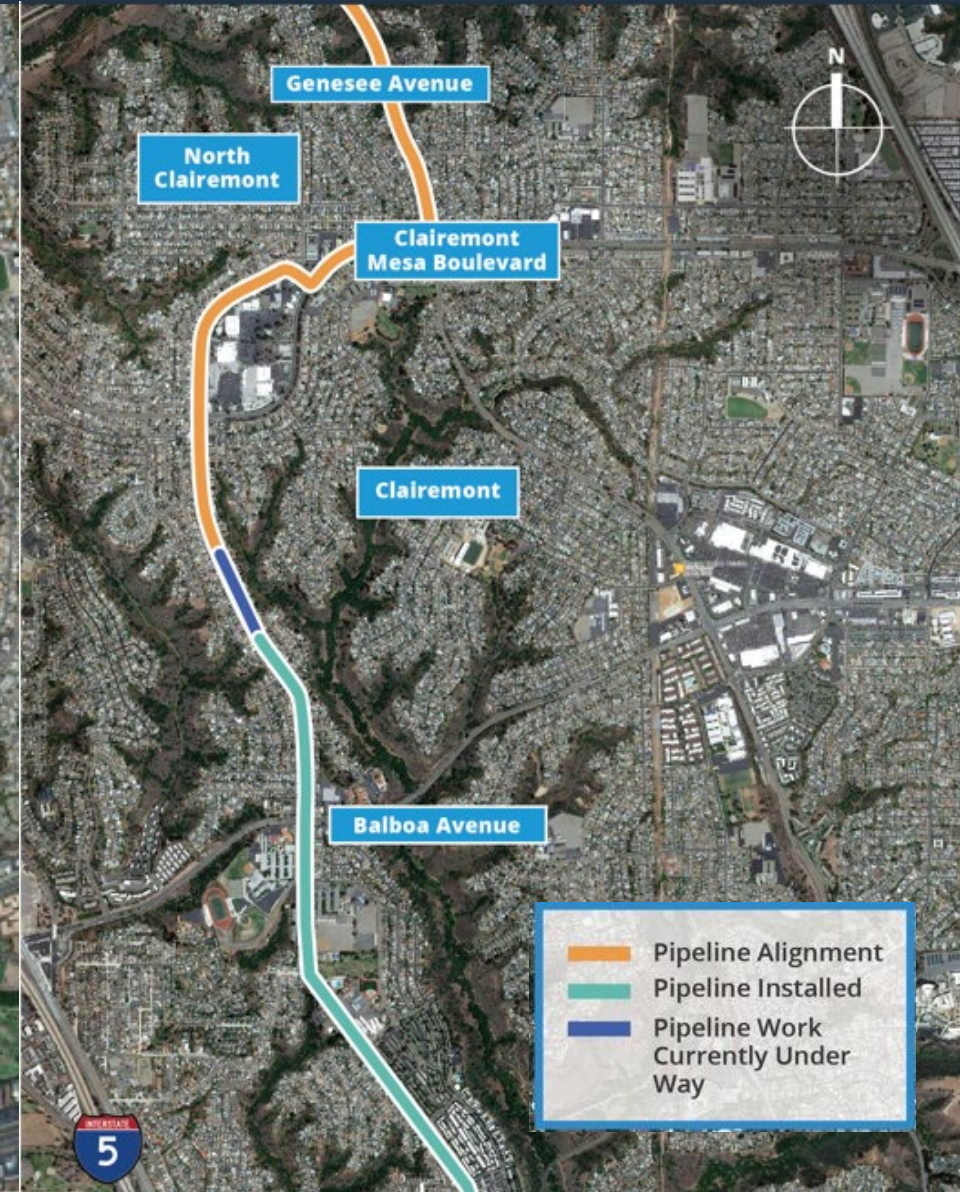
- Project includes**

6.9 miles of both 48" Forcemain and 30" Brine



- Constructed**

3.1 miles of both pipelines have been installed to date



SD Clairemont Drive - Joplin Avenue to Gila Avenue

- **48" and 30" Pipeline Schedule:**
 - Monday through Friday
 - Daytime installation (7:00am – 4:30pm)
 - Nighttime welding (4:30pm – 11:00pm)
- **Current 24-hr Traffic Control:**
 - Keeps one northbound and one southbound lane open
 - Approximately 6 weeks of work
 - Driveway access maintained at all times
 - Emergency responders access maintained at all times
- **Next Milestone:**
 - *Crews will continue northbound on Clairemont Dr*
 - *Next traffic control will reach Clairemont Mesa Blvd*

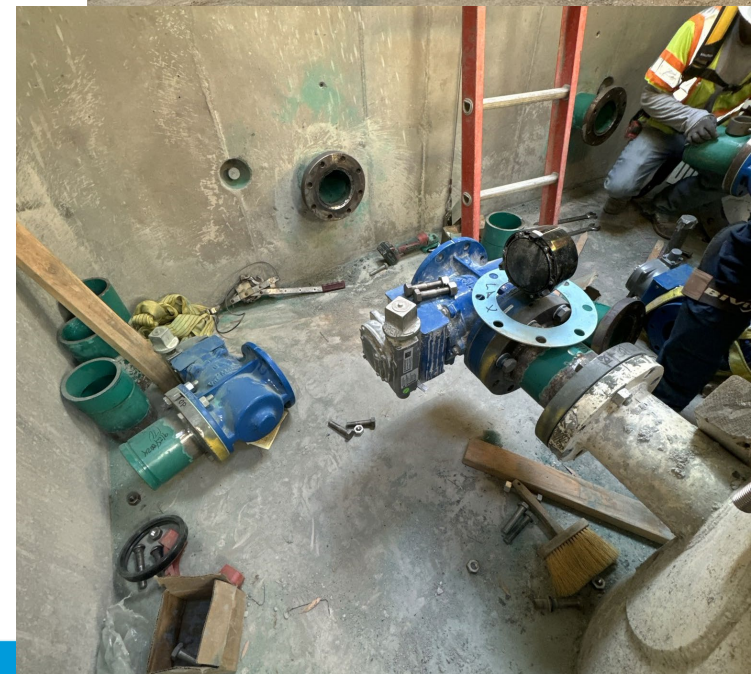




Clairemont Dr. & Feather Ave. Pipeline Installation



- After pipeline installation, additional maintenance components and instrumentation are next in construction. These vaults and structures serve as maintenance points, ensuring the pipeline can be monitored, protected, and serviced in the future.
- **Appurtenances Installation Schedule:**
 - Monday thru Friday
 - Daytime installation (7:00am – 4:30pm)
- **Current 24-hr Traffic Control:**
 - Keeps one northbound and one southbound lane open
 - Approximately 6 weeks of work
- **Next Milestone:**
 - *Crews will fall back to Clairemont Dr and Iroquois Ave*



SD West Morena Blvd – Buenos Ave to Morena Blvd

- **48" and 30" Pipeline Schedule:**
 - Monday thru Friday
 - Daytime installation (4:30am – 1:30pm)
 - Nighttime welding (4:30pm – 11:00pm)
- **Current 24-hr Traffic Control:**
 - 24 hour northbound closure on W. Morena Blvd between Buenos Ave. and Morena Blvd
 - Approximately 6 weeks of work
 - All businesses remain open in the area
 - Emergency responders access maintained at all times
- **Next Milestone:**
 - *Crews will continue northbound on West Morena Blvd*



SD Pipeline Installation @ West Morena Blvd. and Vega St.



SD Pipeline prep @ West Morena Blvd. and Tecolote Creek



SD Future work – Bay Park

- **Expected Pipeline Schedule:**
 - Early 2025
 - Monday thru Friday
 - Daytime installation (*in residential*)
 - Nighttime welding
- **Traffic Control in Design:**
 - Full street closure to safely accommodate work
 - Closure will be one block at a time
 - Sidewalks will remain open
 - Approximately 6 weeks of work
 - Access maintained at all times for emergency responders
 - Trash, delivery services will not be interrupted





■ Work to be completed before:

- 48" and 30" Pipeline installation
- Installation of pipeline appurtenances
- Both Pipelines must Pass Testing
- 167 ADA Curb Ramps upgrades
 - *May also contain electrical upgrades*
- Additional Concrete Work
 - *Medians, sidewalk panels, cross gutters*

■ Final Paving and Bike Lanes:

- Alignment will be paved in 8 phases
- Phase 1- Clairemont Drive from
 - *Erie St to Iroquois Ave*
 - Expected January 2025
- New Bike Lanes will be implemented after final paving



Stay Informed



Website:
purewatersd.org



Phone Line:
833-667-7973
833-MOR-PWSD



Social Media:
[@purewatersd](https://twitter.com/purewatersd)

purewatersd@sandiego.gov

Sign Up for Project Emails

