

11011 Torreyana Road Project

Archaeological Resources Report

December 2022 | 00022.00016.001

Submitted to:

City of San Diego
Planning Department
1010 Second Avenue, Suite 1200
San Diego, CA 92101

Prepared for:

Bridgewest Group
7310 Miramar Road, Suite 500
San Diego, CA 92126

Prepared by:

HELIX Environmental Planning, Inc.
7578 El Cajon Boulevard
La Mesa, CA 91942

This page intentionally left blank

TABLE OF CONTENTS

<u>Section</u>	<u>Page</u>
I. PROJECT DESCRIPTION AND LOCATION.....	1
II. SETTING.....	1
III. AREA OF POTENTIAL EFFECT (APE)	3
IV. STUDY METHODS	4
V. RESULTS OF STUDY.....	5
VI. RECOMMENDATIONS	6
VII. SOURCES CONSULTED DATE	7
VIII. CERTIFICATION.....	7
IX. ATTACHMENTS.....	7
X. CONFIDENTIAL APPENDICES (Bound Separately)	7

LIST OF ATTACHMENTS

- A National Archaeological Database Information
- B Bibliography
- C Maps/Figures
 - Figure 1: Regional Location
 - Figure 2: USGS Topography
 - Figure 3: Project Vicinity (Aerial Photo)
 - Figure 4: Site Plan
- D Table of Previous Investigations Conducted within One Mile of the Project Area
- E Table of Previously Recorded Cultural Resources within One Mile of the Project Area
- F Site Photographs

CONFIDENTIAL APPENDICES (BOUND SEPARATELY)

- A Records Search Maps
- B Native American Correspondence
- C Figure 5: Location of Archaeological Site P-37-040188

This page intentionally left blank

I. PROJECT DESCRIPTION AND LOCATION

This report documents the cultural resources study for the 11011 Torreyana Road Project (project). The project includes one parcel, approximately 10.1 acres in total, located within the University Community Plan area of the City of San Diego (City), south of Los Peñasquitos Lagoon and west of Interstate 5 (I-5) (Figure 1, *Regional Location*). The project area is located within Township 14 South, Range 3 West and Township 15 South, Range 3 West, in the Pueblo Lands of San Diego, on the Del Mar U.S. Geological Survey (USGS) topographic quadrangle (Figure 2, *USGS Topography*). The proposed project parcel is situated east of North Torrey Pines Road, at the northeast corner of Torreyana Road and Callan Road, within Assessor's Parcel Number (APN) 340-010-29-00 (Figure 3, *Aerial Photograph*). The eastern portion of the parcel contains an approximately seven-acre biological open space easement that was quitclaimed by the City to the State of California, according to a Quitclaim Deed recorded in 1984.

The project consists of the redevelopment of the current property, which is comprised of an existing research lab/office building constructed in the early 1980s and associated appurtenances (parking, mechanical yard buildings, landscaping). The current building, parking structure, and auxiliary buildings will be demolished, and a new life science building will be constructed in its place (Figure 4, *Site Plan*).

This report details the methods and results of the cultural resources study for the project, which included a records search, a Sacred Lands File search, tribal outreach, a review of historic maps and aerial photographs, and a field survey with a Kumeyaay Native American monitor.

II. SETTING

Natural Environment (Past and Present)

The project area is located within the coastal plain of western San Diego County, where the climate is characterized as semi-arid steppe, with warm, dry summers and cool, moist winters (Hall 2007; Pryde 2004). This coastal plain lies along the westernmost area of the Peninsular Ranges geomorphic province of southern California. The project area is situated on the lower step of a multi-step mesa, approximately 0.95 mile from the Pacific Ocean to the west, with the Soledad Valley/Peñasquitos Lagoon approximately 1.2 miles to the north. Development in the project vicinity is characterized by a mixture of residential, large-scale recreational (golf course), commercial, and research and development facilities, as well as area of open space/wildlands. The elevation of the project area ranges from approximately 365 to 435 feet above mean sea level (AMSL).

Geologically, the project area is underlain by very old paralic deposits dating to the middle to early Pleistocene age (Kennedy and Tan 2008). The soils mapped for the project area consist of the loamy alluvial land-Huerhuero complex, steep gullied land, and terrace escarpments; both the Carlsbad and Chesterton series are present within the project area as well (Natural Resources Conservation Service 2022). Of these, loamy alluvial land-Huerhuero complex, 9 to 50 percent slopes, severely eroded, predominates within the project area.

According to Bowman (1973:35), natural vegetation for this soil series is chamise, black sage, sumac, and annual grasses and forbs. Various drainages in the vicinity, including Peñasquitos Creek, would have made fresh water easily accessible to native populations living in the area.

Prehistorically, the natural vegetation in the project area and vicinity consisted mostly of Diegan coastal sage scrub and southern mixed chaparral vegetation, with areas of grassland intermittent in the scrub areas, and riparian and fresh water and salt marsh communities present along nearby slough and creek areas. The Diegan coastal sage scrub community would have covered most of the level terrace areas, while southern mixed chaparral vegetation would have been present on the slopes of the ravines and canyons extending down from the terrace areas (Beauchamp 1986; Munz 1974).

Prehistorically, plants of the Diegan coastal sage scrub community likely included California sagebrush (*Artemisia californica*), white sage (*Salvia apiana*), flat-top buckwheat (*Eriogonum fasciculatum*), broom baccharis (*Baccharis sarothroides*), wild onion (*Allium haematochiton*), laurel sumac (*Malosma laurina*), San Diego sunflower (*Bahiopsis laciniata*), golden-yarrow (*Eriophyllum confertiflorum*), sawtooth goldenbush (*Hazardia squarrosa*), yucca (*Yucca schidigera*, *Hesperoyucca whipplei*), prickly pear cactus (*Opuntia* sp.), and scrub oak (*Quercus dumosa*). This community would have covered most of the mesa and canyons in the area, interspersed with areas of native grasslands (*Stipa*, *Elymus*, *Poa*, *Muhlenbergia*). In addition to some of the plants in the scrub community, plants characteristic of the southern mixed chaparral include toyon (*Heteromeles arbutifolia*), chamise (*Adenostoma* spp.), mission manzanita (*Xylococcus bicolor*), wart stemmed ceanothus (*Ceanothus verrucosus*), and mariposa lilies (*Calochortus* sp.). Prior to historic and modern activities, adjacent major drainages such as Peñasquitos Creek contained extensive stands of riparian communities, with plants such as western sycamore (*Platanus racemosa*), Fremont cottonwood (*Populus fremontii*), coast live oak (*Quercus agrifolia*), and willow (*Salix* sp.) (Beauchamp 1986; Lightner 2006; Munz 1974). Plant species naturally occurring in the project area and vicinity are known to have been used by native populations for food, medicine, tools, ceremonial, and other uses, while many of the animal species living within these communities (such as deer, small mammals, and birds) would have been used by native inhabitants as well (Christenson 1990; Hedges and Beresford 1986; Luomala 1978).

Major wildlife species found in this environment prehistorically were coyote (*Canis latrans*); mule deer (*Odocoileus hemionus*); grizzly bear (*Ursus arctos*); mountain lion (*Puma concolor*); desert cottontail (*Sylvilagus audubonii*); jackrabbit (*Lepus californicus*); and various rodents, the most notable of which are the valley pocket gopher (*Thomomys bottae*), California ground squirrel (*Ostospermophilus beecheyi*), and dusky footed woodrat (*Neotoma fuscipes*) (Head 1972). Desert cottontails, jackrabbits, and rodents were very important to the prehistoric diet; deer were somewhat less significant for food, but were an important source of leather, bone, and antler (Christenson 1990; Luomala 1978).

Ethnohistory

Based on ethnographic data, two linguistically distinct populations, the Hokan-based Yuman-speaking peoples (Kumeyaay) and the Takic-speaking peoples (Luiseño), inhabited the San Diego County area. The name Luiseño derives from Mission San Luis Rey de Francia and has been used to refer to the Indian people associated with that mission, while the Kumeyaay people are also known as Ipai, Tipai, or Diegueño (named for Mission San Diego de Alcalá). Agua Hedionda Creek, extending east from the coast and located north of the project, has often been described as the division between the territories of the Luiseño and the Kumeyaay people (Bean and Shipek 1978; Luomala 1978; White 1963), but Kroeber (1925) has the boundary farther south and encompassing the Escondido area.

The project area, in the southern area of the county, is in the traditional territory of the Kumeyaay people, whose population in San Diego in the late 1700s was estimated to be 20,000. The Kumeyaay

lived in semi-sedentary, politically autonomous villages or rancherías. Most rancherías were the seat of a clan, although it is thought that, aboriginally, some clans had more than one ranchería and some rancherías contained more than one clan, often depending on the season within the year (Luomala 1978). Each village was comprised of many households, and groups of villages were part of a larger social system, referred to as a consanguineal kin group (*cimul*) (Carrico 1998). Campsites and villages were chosen based on proximity to water, boulder outcrops, environmental protection, and availability of plants and animals (Luomala 1978). Consequently, many of the Kumeyaay villages or rancherías were in river valleys and along the shoreline of coastal estuaries (Bean and Shippek 1978; Carrico 1998; Kroeber 1925).

Several major Kumeyaay villages were ethnographically documented along the southern coastal area. In closest proximity to project area was the village of Ystagua, located approximately 1.7 kilometers (1.05 miles) to the southeast, along Soledad Valley (Carrico and Taylor 1983). The village was still occupied at the time of early European contact as documented by the Spaniards who visited it in 1769 (Carrico 1977a). Also, as noted above, archaeological evidence indicates that this village location was occupied repeatedly over a period of several thousand years. Another nearby ethnographic village, also documented by the Spaniards in 1769, was the village of Jamo (Rinconada), located approximately 10.8 kilometers (6.7 miles) to the south of the project area, at the mouth of the Rose Canyon drainage on Mission Bay (Carrico 1977a; Winterrowd and Cardenas 1987).

History

While Juan Rodríguez Cabrillo visited San Diego briefly in 1542, the beginning of the historic period in the San Diego area is given as 1769. In the mid-eighteenth century, Spain had escalated its involvement in California from exploration to colonization (Weber 1992) and in that year, a Spanish expedition headed by Gaspar de Portolá and Junípero Serra established the Royal Presidio of San Diego. Portolá then traveled north from San Diego seeking suitable locations to establish military presidios and religious missions to extend the Spanish Empire into Alta California.

Initially, both a mission and a military presidio were located on Presidio Hill overlooking the San Diego River. A small pueblo, now known as Old Town San Diego, developed below the presidio. The Mission San Diego de Alcalá was constructed in its current location five years later. The missions and presidios stood, literally and figuratively, as symbols of Spanish colonialism, importing new systems of labor, demographics, settlement, and economies to the area. Cattle ranching, animal husbandry, and agriculture were the main pursuits of the missions.

Although Mexico gained its independence from Spain in 1821, Spanish patterns of culture and influence remained for a time. The missions continued to operate as they had in the past, and laws governing the distribution of land were also retained in the 1820s. Following secularization of the missions in 1834, large ranchos were granted to prominent and well-connected individuals, ushering in the Rancho Era, with the society making a transition from one dominated by the church and the military to a more civilian population, with people living on ranchos or in pueblos. With the numerous new ranchos in private hands, cattle ranching expanded and prevailed over agricultural activities.

American governance began in 1848, when Mexico signed the Treaty of Guadalupe Hidalgo, ceding California to the United States at the conclusion of the Mexican–American War. A great influx of settlers to California and the San Diego region occurred during the American Period, resulting from several

factors, including the discovery of gold in the state in 1848, the end of the Civil War, the availability of free land through passage of the Homestead Act, and later, the importance of San Diego County as an agricultural area supported by roads, irrigation systems, and connecting railways. The increase in American and European populations quickly overwhelmed many of the Spanish and Mexican cultural traditions, and increased the rate of population decline among Native American communities.

III. AREA OF POTENTIAL EFFECT (APE)

The Area of Potential Effects (APE) for this study is established as the approximately 10.1-acre parcel (APN 340-010-29-00) located at 11011 Torreyana Road, which consists of approximately 3.1 acres of mostly developed space and an approximately seven-acre open space easement (Figure 3).

IV. STUDY METHODS

Archival Research

HELIX conducted a records search at the South Coastal Information Center (SCIC) on December 7, 2022. The search encompassed the proposed project area and a one-mile radius. The records search included the identification of previously recorded cultural resources, locations and citations for previous cultural resources studies, and a review of resources listed in the National Register of Historic Places (NRHP), California Register of Historical Resources (CRHR), California Historical Landmarks, California Points of Historic Interest, and City of San Diego Historical Resources Register. Record search maps are included as Confidential Appendix A, bound separately. Tables summarizing the records search results are provided as Attachments D and E.

Historical maps and aerial photographs were reviewed to assess the potential for historical structural resources and historical archaeological resources, including the 1903 and 1930 USGS La Jolla (1:62,500); 1943 USGS Del Mar (1:31,680); and 1953, 1967, 1975, and 1994 USGS Del Mar (1:24,000) topographic maps; as well as aerial photographs from between 1932 and 1981 (NETR Online 2022; UCSB Digital Library 2022).

Native American Contact Program

HELIX contacted the Native American Heritage Commission (NAHC) on December 1, 2022, to request a search of its Sacred Lands Files. Letters were sent on December 7, 2022 to Native American representatives and interested parties identified by the NAHC. Native American correspondence is included as Confidential Appendix B.

Field Survey

The project area was surveyed by HELIX archaeologist James Turner and Kumeyaay Native American monitor Annette Osuna of Misschief Cultural Monitoring, Inc., on December 13, 2022. The project APE consists of a parking garage and a triangular shaped building, set on a parcel overlooking a deep drainage; the drainage is also included in the APE, although it is outside the proposed development footprint. Reconnaissance was used to inspect under thick brush within the undeveloped areas of the APE that were accessible and on the sloped ground along the eastern edge of the developed portion of the APE; parallel transects were not possible, due to the thick vegetation and extremely steep slopes.

V. RESULTS OF STUDY

Background Research

SCIC has a record of 180 reports on file within a one-mile radius of the project area. Of these, only three studies overlap the APE—a cultural resources inventory of the San Diego coast state beaches, the results of a surface and subsurface testing of archaeological sites within the Torrey Pines Science Park, and the results of an archaeological and geospatial investigation of fire-altered rock features at the Torrey Pines State Reserve. Additionally, HELIX conducted a cultural resource study in January 2021 for the property immediately south of the project APE (Robbins-Wade 2022)—this report was not captured by the records search.

A total of 80 cultural resources are recorded within one mile of the project APE, one of which, P-37-040188 (SDM-W-1075), overlaps with the APE (Figure 5, *Location of Archaeological Site P-37-040188*, bound separately in Confidential Appendix C). During the 2022 HELIX study for the adjacent parcel (Robbins-Wade 2022), a review of in-house records identified one resource, SDM-W-1075, mapped within that parcel and the current project APE. HELIX prepared a site form and submitted it to the SCIC - the site has subsequently been documented as P-37-040188. During a survey conducted in the 1970s of a larger area that contained the project site, WESTEC Services (WESTEC) documented SDM-W-1075 within the western portion of the project area. The resource was noted to be a surface scatter of stone tools and flakes described as being “of moderate importance” (Carrico 1977b). WESTEC conducted surface and subsurface testing of multiple resources in the area in 1977; all visible artifacts at SDM-W-1075 were collected at that time and, due to the surficial nature of the resource, neither testing nor additional fieldwork was conducted. A total of 130 artifacts were recovered from SDM-W-1075, consisting of ground stone and flaked stone tools, a projectile point, a single piece of ceramic, and more than 100 flakes and pieces of debitage. It was noted that the artifacts recovered from the site represent material that is usually associated with the manufacture of tools and quarrying activities; based on this and a comparison of other similar sites, it was determined that this resource was likely an area where lithic resources were obtained, flaked, and taken to a nearby campsite. Because the artifacts at site W-1075 were collected and analyzed, WESTEC concluded that “the data collected from this site coupled with the preservation of the recovered artifacts ensure that, although the physical manifestation of site W-1075 could be destroyed by construction, the valuable data contained therein will be preserved” (Carrico 1977b). SDM-W-1075 was recorded at the San Diego Museum of Man (now the Museum of Us) but it was never recorded at SCIC and did not have Primary numbers or trinomials assigned to it. HELIX prepared a Department of Parks & Recreation (DPR) site record for SDM-W-1075 based on Carrico’s information (1977b), which was submitted to SCIC; the site has been assigned the Primary number P-37-040188 and the trinomial CA-SDI-23327.

No structures are visible in the project area on the 1903 or 1930 La Jolla (1:62,500) topographic maps, though the Southern California Railroad is recorded to the east. The 1953 Del Mar (1:24,000) topographic map depicts the Coast Highway 101 west of the project – this highway would later become North Torrey Pines Road. The Southern California Railroad was also relabeled as the Atchison, Topeka, and Santa Fe Railway in the 1953 map. The subsequent 1967 and 1975 Del Mar topographic maps depict a trail or light-use road running through the project area. This road is not present on the 1994 Del Mar topographic map; instead, a paved road and several structures are visible in the vicinity of the project area. Between 1979 and 1980, the western portion of the project APE was graded, and by 1981 the existing building within the project site is shown on aerial photographs as being constructed.

Native American Contact Program

The NAHC indicated in a response dated December 16, 2022, that the search of their Sacred Lands File was completed for the project with negative results. A list of tribal contacts from whom additional information can be solicited was provided with the NAHC's response; letters were sent to these contacts on December 7, 2022. To date, one response has been received. Viejas Band of Kumeyaay Indians (Viejas) responded on December 20, 2022 that there are known cultural resources within or adjacent to the project area. They request that a Kumeyaay cultural monitor be on site for all ground-disturbing activities. If additional responses are received, they will be forwarded to City staff. Native American correspondence is included as Confidential Appendix B.

Field Survey

Due to the developed nature of the project site, most of the ground surface within the proposed development footprint of the project was inaccessible or otherwise unviewable due to buildings, paved driveways and parking areas, and landscaped berms (Site Photographs; Attachment F). What ground surface was visible was located along the roadway and within the northern section of the APE. Within that area, the visible soils consisted of medium to dark brown silty loam. All accessible areas of the APE were thoroughly checked for cultural resources—none were observed within the project area. The eastern, undeveloped portion of the project within the biological open space easement could not be thoroughly surveyed, due to thick vegetation and steep slopes; however, this area is not proposed for development under the current project plan.

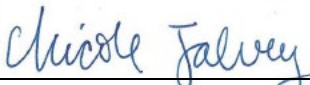

One objective of the field survey was to gauge the depth of grading that occurred during the construction of the existing structures on site, and to determine whether the soil was graded to depths below that which would contain cultural resources. Due to the sloped nature of the surrounding landscape, it appeared as though the property was graded approximately three to ten feet below the original ground surface, with the southern edge of the property sitting at a lower elevation than the western edge.

VI. RECOMMENDATIONS

Although the project is in an area of cultural resource sensitivity, the proposed development footprint has previously been graded to below potentially cultural levels. In addition, impacts to site P-37-040188 (SDM-W-1075) were considered mitigated through artifact collection and documentation prior to development of the existing buildings (Carrico 1977b). Based on this, the project will have no significant effect on archaeological resources, and no further measures are recommended.

Although there is also no evidence to suggest the presence of human remains, in the unlikely event that human remains are encountered during ground-disturbing activities, all work shall cease, and the county coroner shall be contacted, per the California Public Resources Code. Should the remains be identified as Native American, the NAHC shall be contacted within 48 hours to provide a most-likely descendant to determine appropriate actions.

VII. SOURCES CONSULTED	DATE
National Register of Historic Places	Month and Year: December 2022
California Register of Historical Resources	Month and Year: December 2022
City of San Diego Historical Resources Register	Month and Year: December 2022
Archaeological/Historical Site Records: South Coastal Information Center	Month and Year: December 2022
Other Sources Consulted: California Historical Landmarks (December 2022)	

VIII. CERTIFICATION	
Preparer: Nicole Falvey, BA	Title: Cultural Resources Project Manager
Signature: 	Date: 12/22/2022
Preparer: James Turner, M.A., RPA	Title: Principal Investigator
Signature: 	Date: 12/22/2022

- IX. ATTACHMENTS**
- A National Archaeological Database Information
 - B Bibliography
 - C Maps/Figures
 - Regional Location
 - USGS Topography
 - Project Vicinity (Aerial Photo)
 - Site Plan
 - Location of Archaeological Site P-37-040188
 - D Table of Previous Investigations Conducted within One Mile of the Project Area
 - E Table of Previously Recorded Cultural Resources within One Mile of the Project
 - F Site Photographs

- X. CONFIDENTIAL APPENDICES (Bound Separately)**
- A Records Search Maps
 - B Native American Correspondence
 - C Figure 5: Location of Archaeological Site P-37-040188

Attachment A

National Archaeological Database
Information

NATIONAL ARCHAEOLOGICAL DATA BASE INFORMATION

Authors: Nicole Falvey, BA and James Turner, M.A., RPA

Consulting Firm: HELIX Environmental Planning, Inc., 7578 El Cajon Boulevard,
La Mesa, CA 91942, (619) 462-1515

Report Date: December 2022

Report Title: Archaeological Resources Report Form, 11011 Torreyana Road

Prepared for: Bridgewest Group

Contract number: HELIX Project No. 04907.00001.001

USGS quadrangle: Del Mar (7.5' series)

Acreage: Approximately 10.1 acres

Keywords: Archaeological survey; City of San Diego; University Community Plan area;
Township 15 South, Range 3 West; no archaeological resources observed;
SDM-W-1075 previously recorded, apparently destroyed, P-37-040188
(CA-SDI-23327)

Attachment B

Bibliography

Attachment B Bibliography

Bean, Lowell J., and Florence Shipek

- 1978 Luiseño. In *California*, edited by Robert F. Heizer, pp. 550–563. Handbook of North American Indians, Vol. 8, William C. Sturtevant, general editor. Smithsonian Institution, Washington, D.C.

Beauchamp, R. Mitchell

- 1986 *A Flora of San Diego County, California*. Sweetwater River Press, National City.

Bowman, Roy H.

- 1973 *Soil Survey: San Diego Area*. United States Department of Agriculture. Beltsville, Maryland.

Carrico, Richard L.

- 1977a Portolá's 1769 Expedition and Coastal Native Villages of San Diego County. *The Journal of California Anthropology* 4(1): 30–41.

- 1977b Results of Surface and Subsurface Testing and Mapping of Archaeological Sites on Torrey Pines Science Park Unit No. 2 Report prepared by WESTEC Services, Inc., San Diego. Report on file at the South Coastal Information Center, San Diego State University.

- 1998 Ethnohistoric Period. In *Prehistoric and Historic Archaeology of Metropolitan San Diego: A Historic Properties Background Study*. Draft document prepared by ASM Affiliates for Metropolitan Wastewater Public Works, San Diego, California.

Carrico, Richard L., and Clifford V. F. Taylor

- 1983 *Excavation of a Portion of Ystagua: A Coastal Valley Ipai Settlement*. Report on file at the South Coastal Information Center, San Diego State University.

Christenson, Lynne E.

- 1990 *The Late Prehistoric Yuman People of San Diego County, California: Their Settlement and Subsistence System*. Ph.D. dissertation, Department of Anthropology, Arizona State University, Tempe. University Microfilms, Ann Arbor.

Hall, Clarence A., Jr.

- 2007 *Introduction to the Geology of Southern California and its Native Plants*. University of California Press, Berkeley.

Head, Winfield S.

- 1972 *The California Chaparral: An Elfin Forest*. Naturegraph Publishers, Healdsburg, California.

Hedges, Ken, and Christina Beresford

- 1986 *Santa Ysabel Ethnobotany*. San Diego Museum of Man Ethnic Technology Notes No. 20.

Attachment B Bibliography

- Kennedy, Michael P., and Siang S. Tan
2008 *Geologic Map of the San Diego 30 x 60-Minute Quadrangle, California*. Digital preparation by: Kelly R. Bovard, Anne G. Garcia, Diane Burns and Carlos I. Gutierrez. California Department of Conservation, California Geological Survey.
- Kroeber, A.L.
1925 *Handbook of California Indians. Bureau of American Ethnology Bulletin 78*. Republished in 1970 by the California Book Company, Berkeley, CA and the Filmer Brothers Press, Taylor & Taylor, San Francisco, CA.
- Lightner, James
2006 *San Diego Native Plants*. San Diego Flora, San Diego.
- Luomala, Katherine
1978 Tipai-Ipai. In *California*, edited by Robert F. Heizer, pp. 592-609. *Handbook of North American Indians*, vol. 8. William C. Sturtevant, general editor. Smithsonian Institution, Washington, D.C.
- Munz, Philip A.
1974 *A Flora of Southern California*. University of California Press, Berkeley.
- Natural Resources Conservation Service
2022 Web Soil Survey. Electronic document available at <http://websoilsurvey.sc.egov.usda.gov/App/HomePage.htm>, accessed on January 25, 2022.
- NETR Online
2022 *Historic Aerials*. Nationwide Environmental Title Research, LLC. Electronic document available at: <http://www.historicaerials.com>, accessed January 5, 2022.
- Pryde, Philip R.
2004 *San Diego: An Introduction to the Region*. Sunbelt Publications; 4th edition.
- Robbins-Wade, Mary
2022 Life Biosciences Building Project Archaeological Resources Report Form. HELIX Environmental Planning, Inc. On file at HELIX Environmental Planning, Inc, La Mesa.
- UCSB Digital Library
2022 UCSB Frame Finder. University of California, Santa Barbara Digital Library. Electronic Resource available at https://mil.library.ucsb.edu/ap_indexes/FrameFinder/, accessed January 25, 2022.
- Weber, David
1992 *The Spanish Frontier in North America*. Yale University Press.

Attachment B Bibliography

White, Raymond C.

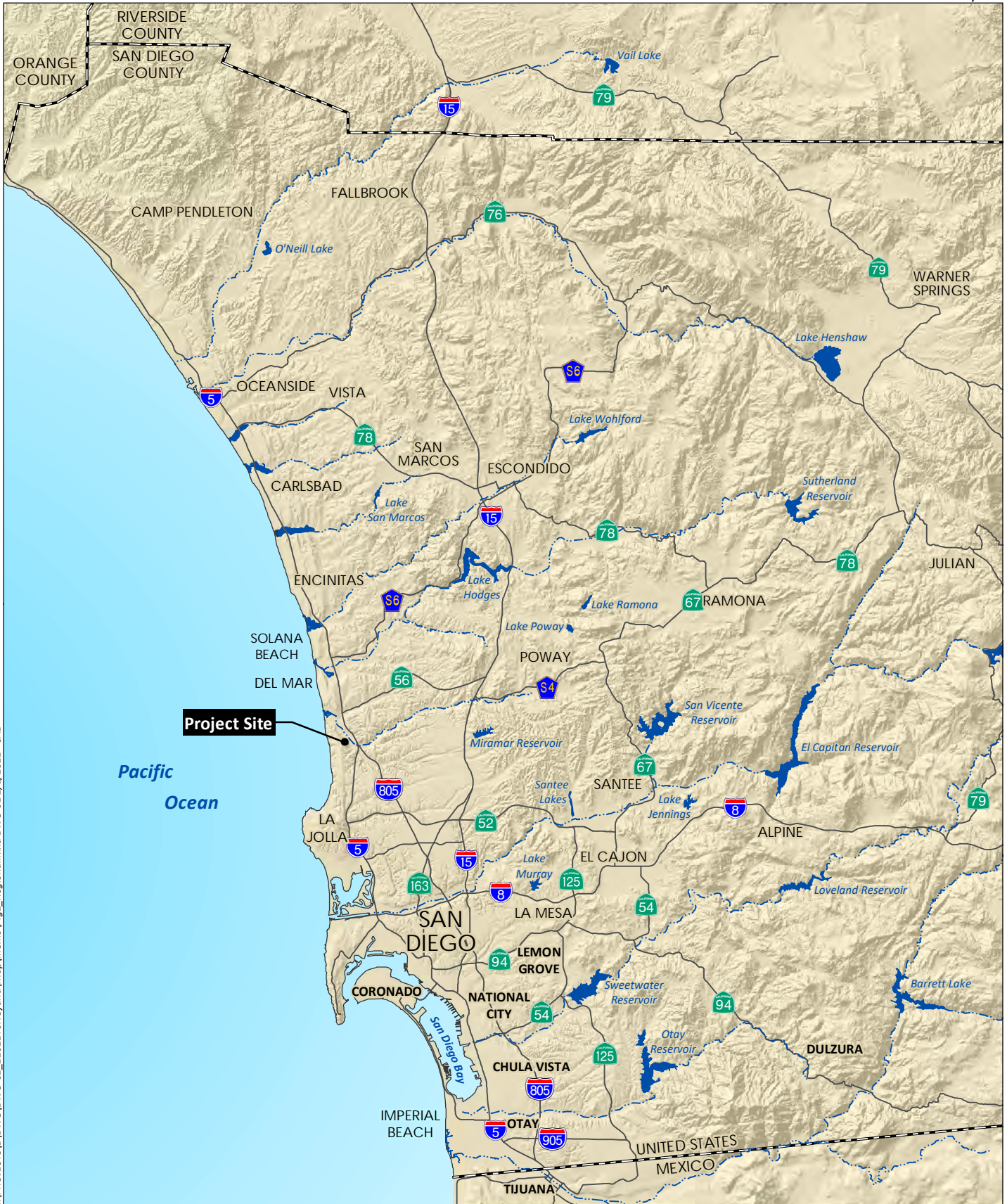
1963 Luiseño Social Organization. *University of California Publications in American Archaeology and Ethnology* 48(2):91-194.

Winterrowd, Cathy L., and D. Seán Cárdenas

1987 *An Archaeological Indexing of a Portion of the Village of La Rinconada de Jamo SDI-5017 (SDM-W-150)*. Report prepared by RBR Associates, Inc., San Diego. Report on file at the South Coastal Information Center, San Diego State University.

Attachment C



Maps/Figures

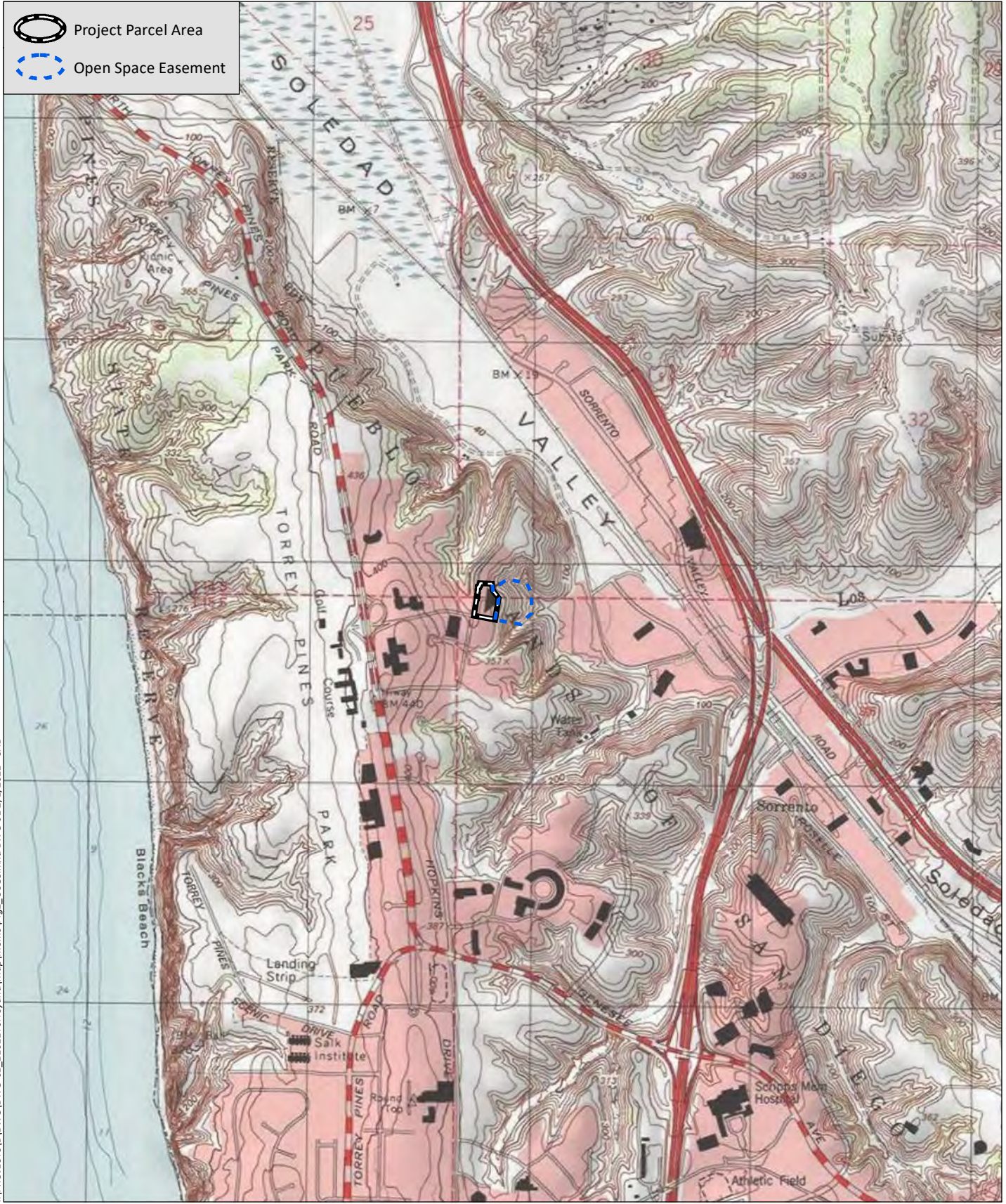


I:\PROJECTS\B\BWG\BWG-01_11011Torreyana\Map\memo\Fig1_Regional.mxd BWG-01 2/1/2021 - SAB

Source: Base Map Layers (SanGIS, 2016)

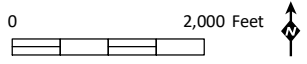




-  Project Parcel Area
-  Open Space Easement



I:\PROJECTS\B\BWG\BWG-01_11011Torreyana\Map\memo\Fig2_USGS.mxd BWG-01 2/1/2021 - SAB

Source: DEL MAR 7.5' Quad (USGS)



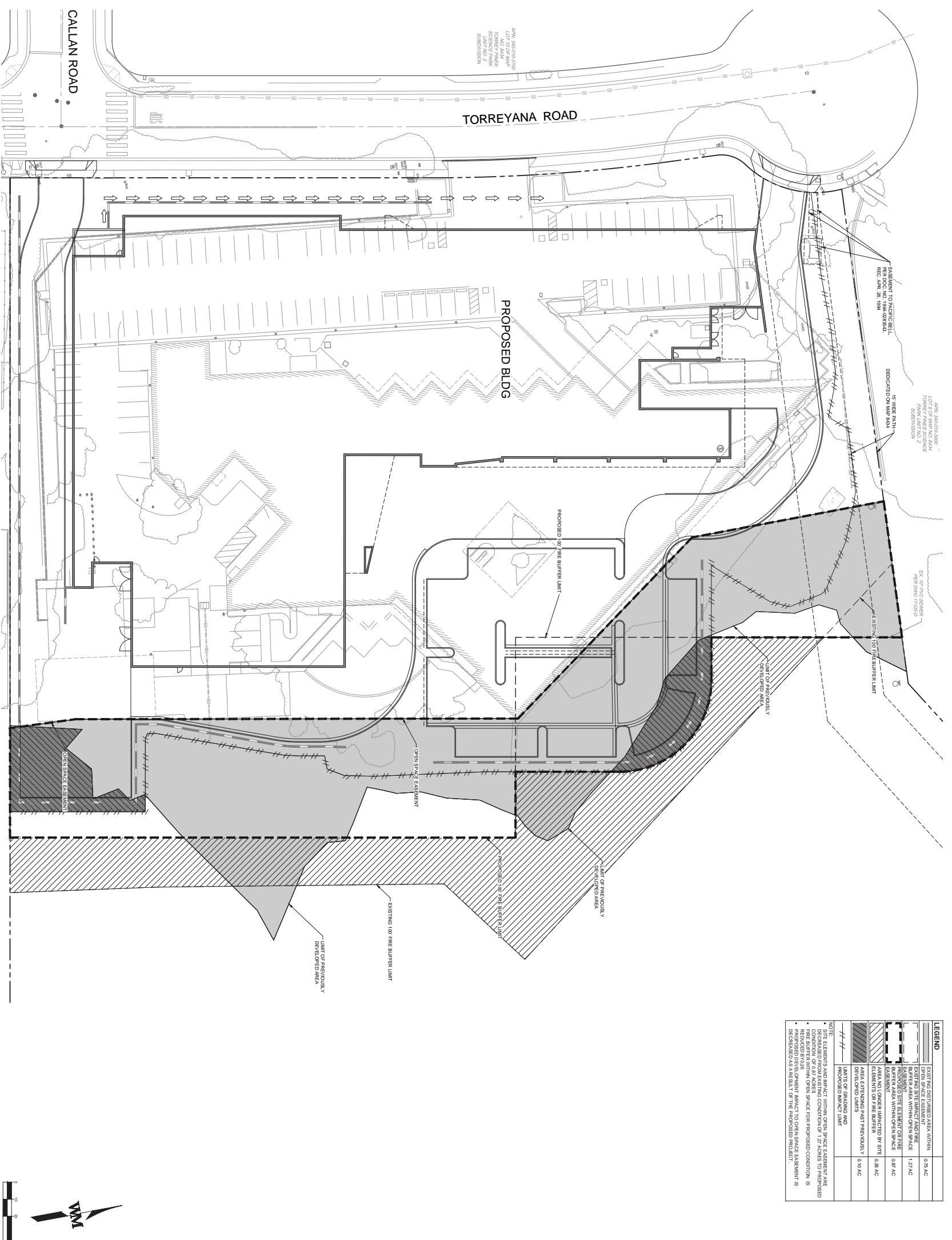
 Project Parcel Area
 Open Space Easement



Source : Aerial (SANDAG, 2019)

Aerial Photograph of Project Location

Figure 3



Attachment D

Table of Previous Investigations
Conducted within One Mile of the
Project Area

Report List

Report No.	Other IDs	Year	Author(s)	Title	Affiliation	Resources
SD-00007	NADB-R - 1120007; Voided - DAY 01	1979	Day, Sandra, Fraanklin, Randy, and Carrico, Richard L.	Archaeological Investigation at Site W-1761: Torrey Pines Science Park Unit 3	WESTEC Services, Inc.	
SD-00012	Voided - MSA 09	1979	MULTI SYSTEMS ASSOCIATES, INC	SORRENTO VALLEY INDUSTRIAL PARK UNIT 8	MULTI SYSTEMS ASSOCIATES, INC	37-005826
SD-00182	NADB-R - 1120182; Voided - BARTER 01	1986	Barter, Eloise Richards	Torrey Pines State Reserves Resource Management Plan	California State Archaeologist	37-000196, 37-000198, 37-000199, 37-000200, 37-004517, 37-004625, 37-004626, 37-007223, 37-007224, 37-007225, 37-009588, 37-009594, 37-007225, 37-009588, 37-009594, 37-009595, 37-009596, 37-009597, 37-009599, 37-009600, 37-009601, 37-009602, 37-009603, 37-009604, 37-009606, 37-010636, 37-010637
SD-00230	NADB-R - 1120230; Voided - CARRICO40	1977	Carrico, Richard	Archaeological Study of the Commercial Proposed Sorrento Valley R&D Complex.	WESTEC Services, Inc.	
SD-00279	NADB-R - 1120279; Voided - CARRICO58	1978	Carrico, Richard	Archaeological Study of the Proposed Wong Sorrento Industrial Buildings San Diego	Westec Services, Inc.	37-001010, 37-001064, 37-001087, 37-001106, 37-004513, 37-004609
SD-00281	NADB-R - 1120281; Voided - CARRICO63	1978	Carrico, Richard	Archaeological Study of the Proposed Sorrento West Industrial Complex San Diego, California.	WESTEC Services, Inc.	37-001010, 37-001064, 37-001087, 37-001106, 37-004513, 37-004609, 37-004647, 37-005193
SD-00419	NADB-R - 1120419; Voided - CARRICO136	1982	Carrico, Richard	Appendix E Archaeological and Historical Survey Report Sorrento Hills Community Plan.	WESTEC Services, Inc.	37-000962
SD-00573	NADB-R - 1120573; Voided - CARRILLO03	1979	Carrillo, Charles and Charles Bull	Linkabit Data Recovery Archaeological Testing at SDM-W-1076 San Diego, CA	Recon	
SD-00596	NADB-R - 1120596; Voided - CHEEVER06	1986	Cheever, Dayle and Dennis Gallegos	Cultural Resource Survey of Brown-Leary Office Site, Sorrento Valley, California.	WESTEC Services, Inc.	37-004647
SD-00604	NADB-R - 1120604; Voided - CITY SD 2	1986	Dugan, Diana L.	Proposed Mitigated Negative Declaration: Driving Range Relocation of Torrey Pines Golf Course	City of San Diego	
SD-00605	NADB-R - 1120605; Voided - CITY SD 1	1986	Dugan, Diana L.	Proposed Mitigated Negative Declaration: Sorrento Northridge	City of San Diego	
SD-00648	NADB-R - 1120648; Voided - CARRICO24	1977	Carrico, Richard	Archaeological Study of the Norwich-Kaiser-Dent Industrial Lot	Westec Services, Inc.	37-001010, 37-001087, 37-001106, 37-004513, 37-004609, 37-004647, 37-005193, 37-005201

Report List

Report No.	Other IDs	Year	Author(s)	Title	Affiliation	Resources
SD-00652	NADB-R - 1120652; Voided - CARRICO18	1975	Carrico, Richard	Archaeological and Historical Survey of the Higgins-Sorrento Valley Project (EQD No. 75-06-3-1P)	Westec Services, Inc.	37-001010, 37-001064, 37-001087, 37-001106
SD-00680	NADB-R - 1120680; Voided - HECTOR 20	1986	Hector, Susan and Sue Wade	Excavation of a Portion of SDI-4513 The Rimbach Site City of San Diego, California.	RECON	37-004513, 37-004609
SD-00773	NADB-R - 1120773; Voided - CHEEVER12	1986	Cheever, Dayle and Dennis Gallegos	Cultural Resource Survey and Test of SDI-5218, LaJolla, California	WESTEC	37-005218
SD-00809	NADB-R - 1120809; Voided - LAYLANDE14	1985	Laylander, Don	Archaeological Survey Report for Proposed Widening and Ramp Construction Route I-5/Carmel Valley Road San Diego County.	Caltrans	37-001010, 37-001103, 37-004615, 37-004647, 37-008121
SD-00827	NADB-R - 1120827; Voided - GALLEGO 71	1989	Gallegos, Dennis, Roxana Phillips, Andrew Pignoli, Tom Demere, and Patricia M. Masters	A Cultural and Paleontological Inventory Update for the University of California at San Diego and Scripps Institution of Oceanography	ERC Environmental and Energy Services	37-000201, 37-000525, 37-004620, 37-004623, 37-004669, 37-007952, 37-008466, 37-008467, 37-008468, 37-008469, 37-008470, 37-008471, 37-008472, 37-009288, 37-011019
SD-00974	NADB-R - 1120974; Voided - HECTOR 24	1986	Hector, Susan	Archaeological Survey of the Scripps Clinic Parking Structure (RECON Number R-15f19)	RECON	
SD-01010	NADB-R - 1121010; Voided - GALLEGO 37	1988	Gallegos, Dennis, Carolyn Kyle, and Richard Carrico	CEQA Test and Evaluation of Prehistoric Site SDI-197 Sorrento Valley, San Diego, California	WESTEC Services, Inc.	37-000197
SD-01149	NADB-R - 1121149; Voided - LAYLANDE16	1986	Laylander, Don	Thrid Addendum Archaeological Survey Report for Proposed Widening and Ramp Construction Route I-5/Carmel Valley Road San Diego County.	San Diego State University CRM Center	37-004513
SD-01397	NADB-R - 1121397; Voided - EIDSNES505	1979	Eidsness, Janet, Douglas Flower, Darcy Ike, and Linda Roth	Archaeological Investigation of the Sorrento Valley Road Pipeline Project Limited Linear Test, City of San Diego SDM-W-654	Flower, Ike, and Roth Archaeological Consultants	
SD-01583	NADB-R - 1121583; Voided - WADE 04	1985	Wade, Sue A.	Excavation of Five Sites in the Sorrento Hills Gateway Project Area SDM-W-2480, SDM-W-2481, SH-81-1, SH-81-2, and SH-81-3	RECON	37-010686, 37-010687
SD-01625	NADB-R - 1121625; Voided - WESTEC 3	1977	WESTEC Services, Inc.	Cultural Resources of the West Mira Mesa Planning Area	WESTEC Services, Inc.	
SD-01628	NADB-R - 1121628; Voided - WESTEC 01	1978	WESTEC Services, Inc.	Archaeological Reconnaissance for Torrey Pines Science Park Unit No. 3	WESTEC Services, Inc.	
SD-01638	NADB-R - 1121638; Voided - WOODWARD04	1985	Woodward, Jim and George Stammelhoan	Resource Inventory/Cultural Resources San Diego Coast State Beaches	Department of Parks and Recreation	37-004612, 37-006854, 37-009586, 37-009587, 37-009588, 37-009589, 37-009590, 37-009598

Report List

Report No.	Other IDs	Year	Author(s)	Title	Affiliation	Resources
SD-01660	NADB-R - 1121660; Voided - WADE 18	1985	Wade, Sue A.	Excavation of Five Sites in the Sorrento Hills Gateway Project Area SDM-W-2480, SDM-W-2481, SH-81-1, SH-81-2, and SH-81-3	RECON	37-000392, 37-000414, 37-000415, 37-000531, 37-001087, 37-001106, 37-005028, 37-005031, 37-005032, 37-005033, 37-005034, 37-005035, 37-005161, 37-005198, 37-005201, 37-005202, 37-005219, 37-005220, 37-005221, 37-005378, 37-005385, 37-005387, 37-005826, 37-008098, 37-008099, 37-008100, 37-008101, 37-008102, 37-008103, 37-008104, 37-008105, 37-008106, 37-008107, 37-008108, 37-008109, 37-008110, 37-008111, 37-008112, 37-008113, 37-008115, 37-008116, 37-008117, 37-008118, 37-008119, 37-008120, 37-008121, 37-008123, 37-008124, 37-008125, 37-008396, 37-008970, 37-008971, 37-009241, 37-009869
SD-01666	NADB-R - 1121666; Voided - WADE 12A	1986	Wade, Sue A.	Gonzales Canyon Sewer Line	RECON	37-000197, 37-001103
SD-01695	NADB-R - 1121695; Voided - POLAN 28	1981	Polan, H. Keith	Soledad Valley West: An Archaeological Assessment	Heritage Environmental Services	
SD-01794	NADB-R - 1121794; Voided - SCHAEFFER02	1987	Schaefer, Jerry and Michael C. Elling	An Assessment of Cultural Resources in Los Penasquitos Canyon Reserve San Diego, California	Consulting Archaeologists	
SD-01795	NADB-R - 1121795; Voided - RECON 84	1981	RECON-Regional Environmental Consultants	Archaeological and Biological Survey Reports for the San Andres Project County of San Diego	RECON	
SD-01853	NADB-R - 1121853; Voided - HECTOR 60	1989	Hector, Susan, Dayle Cheever, and McMillan Davis	Significance Testing of a Portion of SDI-197: Torrey Enterprises-Sorrento Valley Property	RECON	37-000197
SD-01869	NADB-R - 1121869; Voided - HECTOR 44	1984	Hector, Susan	Torrey Pines Science Park Archaeology	RECON	
SD-01920	NADB-R - 1121920; Voided - HANNA 08	1980	Hanna, David Jr.	A Cultural Resource Inventory of the University of California at San Diego	RECON	37-000525, 37-004624
SD-02316	NADB-R - 1122316; Voided - SMITHB 203	1991	SMITH, BRIAN F.	THE RESULTS OF ARCHAEOLOGICAL STUDY FOR THE SD&E PENASQUITOS-GENESSEE 69 KV TRANSMISSION LINE PROJECT, CITY OF SAN DIEGO	BRIAN F. SMITH AND ASSOCIATES	

Report List

Report No.	Other IDs	Year	Author(s)	Title	Affiliation	Resources
SD-02345	NADB-R - 1122345; Voided - SMITTHB 168	1991	SMITH, BRIAN F.	RESULTS OF AN ARCHAEOLOGICAL STUDY FOR THE GENESEE AVENUE I-5 INTERCHANGE PROJECT	BRIAN F. SMITH AND ASSOCIATES	
SD-02520	NADB-R - 1122520; Other - 2216A; Voided - EIGHMEY04	1992	EIGHMEY, JAMES AND DAYLE CHEEVER	SIGNIFICANCE TESTING ON A PORTION OF SDI-12581(SDM-W-6), A COASTAL ARCHAIC SITE, SAN DIEGO	RECON	
SD-02559	NADB-R - 1122559; Other - 2443A; Voided - WADE 44	1992	WADE, SUE	CULTURAL RESOURCES RECONNAISSANCE FOR THE SDGE RECONDUCTOR ALIGNMENT CITY OF SAN DIEGO	RECON	
SD-02615	NADB-R - 1122615; Voided - BARTEL 02	1990	BARTEL, BRAD	ARCHAEOLOGICAL SURVEY REPORT: LANDS OF RANCHO CORTE MADERA VEGETATION MANAGEMENT PROJECT, SAN DIEGO COUNTY CALIFORNIA	DEPARTMENT OF ANTHROPOLOGY SAN DIEGO STATE UNIVERSITY	37-009205, 37-009212, 37-010903, 37-011957
SD-02697	NADB-R - 1122697; Voided - GROSS 27	1990	GROSS, TIMOTHY and MARY ROBBINS-WADE	CULTURAL RESOURCE SURVEY AND ASSESSMENT FOR THE SORRENTO VALLEY ROAD REALIGNMENT AND UTILITY IMPROVEMENTS, SAN DIEGO, CALIFORNIA	AFFINIS	37-000197, 37-001103, 37-004647
SD-02699	NADB-R - 1122699; Voided - CARRICO160	1992	CARRICO, RICHARD and ET AL	PHASE 1 HISTORIC PROPERTIES INVENTORY OF THE MID-COAST CORRIDOR TRANSPORTATION ALTERNATIVES, SAN DIEGO, CALIFORNIA	OGDEN ENVIRONMENTAL AND ENERGY SERVICES CO	37-000041, 37-000197, 37-000531, 37-000962, 37-001103, 37-004605, 37-004627, 37-008121, 37-009288, 37-010143, 37-010437, 37-011783, 37-012453, 37-012556, 37-012557, 37-012559, 37-012560
SD-02700	NADB-R - 1122700; Other - # 949; Voided - ALTER 07	1992	ALTER, RUTH and MARY ROBBINS-WADE	HISTORIC PROPERTIES INVENTORY FOR THE NORTH CITY WATER RECLAMATION PLANT EFFLUENT PIPELINE PROJECT (NORTH CITY AND EAST MISSION BAY PIPELINES) CLEAN WATER PROGRAM FOR GREATER SAN DIEGO, SAN DIEGO, CALIFORNIA	AFFINIS	37-005017
SD-02733	NADB-R - 1122733; Voided - WHITEHOU10	1993	WHITEHOUSE, JOHN, FRANK RITZ, and DAYLE M. CHEEVER	CULTURAL RESOURCE SURVEY AND ARCHAEOLOGICAL TEST EXCAVATIONS AT SDI-8121, 531, 8117, 10685 ON TORREY RESERVE HEIGHTS PARCEL, CITY OF SAN DIEGO	RECON	37-000531, 37-008117, 37-008121, 37-010685
SD-02770	NADB-R - 1122770; Other - 92041068; Voided - CITYSD 48	1993	CITY OF SAN DIEGO	SORRENTO HILLS COMMUNITY PLAN AMENDMENT/TORRY RESERVE HEIGHTS/SORRENTO HILLS PHASE 11, UNIT 4, SAN DIEGO COUNTY, CALIFORNIA	CITY OF SAN DIEGO	37-000531, 37-008117, 37-010685

Report List

Report No.	Other IDs	Year	Author(s)	Title	Affiliation	Resources
SD-02969	NADB-R - 1122969; Other - 2510A; Voided - CHEEVER48	1993	CHEEVER, DAYLE E.	CULTURAL RESOURCES SURVEY FOR THE TORREY VIEW ALLREDS/SORRENTO HILLS PROJECT IN THE CITY OF SAN DIEGO, CALIFORNIA	RECON	37-010686, 37-012122
SD-03045	NADB-R - 1123045; Voided - LOHSTRO01	2004	LOHSTROH, STEPHANIE	HISTORICAL RESOURCES SURVEY AND REPORT FOR THE LOS PENASQUITOS NORTH WETLAND CREATION PROJECT - REVISED	ASM AFFILIATES	
SD-03237	NADB-R - 1123237; Other - 93101080; Voided - CITYSD 101	1994	MONSERRATE, LAWRENCE C.	PENASQUITOS RELIEF TRUCK SEWER CITY COUNCIL APPROVAL	CITY OF SAN DIEGO	37-008124, 37-013492
SD-03304	NADB-R - 1123304; Voided - CHEEVER52	1993	CHEEVER, DAYLE	CULTURAL RESCOURCE SURVEY OF THE TORREY RESERVE TERRACE PROJECT AND INCLUDES THE MITIGATION MONITORING AND REPORTING PROGRAM	RECON	37-001106, 37-005826, 37-008116, 37-008117
SD-03305	NADB-R - 1123305; Voided - CHEEVER53	1996	CHEEVER, DAYLE, JOHN L.R. WHITEHOUSE, and FRANK RITZ	TORREY HILLS CULTURAL RESOURCE SURVEY AND ARCHAEOLOGICAL TEST EVXCAVATION: TECHNICAL APPENDICES	RECON	37-000531, 37-008117, 37-008121, 37-010685
SD-03410	NADB-R - 1123410; Voided - ASM 13	1991	Wade Sue	Cultural Resource Survey of the La Jolla Spectrum Property	ASM	
SD-03523	NADB-R - 1123523; Other - RECON NO 2925A; Voided - CHEEVER61	1998	CHEEVER, DYLE M and RUSSELL O COLLETT	RESULTS OF EXTENDED PHASE II SAMPLING AT CA-SDI-197, SORRENTO POINT PROJECT, SAN DIEGO, CAL (LDR NO 98-0677)	AMERICAN ASSETS, INC	37-000197
SD-03768	NADB-R - 1123768; Voided - CHEEVER64	1993	CHEEVER, DAYLE M., JOHN L.R. WHITEHOUSE, and FRANK RITZ	CULTURAL RESOURCCE SURVEY AND ARCHAEOLOGICAL TEST EXCAVATIONS AT SDI-8121/SDI-531, SDI-8117, AND SDI10,685 ON THE TORREY RESERVE HEIGHTS PARCEL CITY OF SAN DIEGO, CALIFORNIA	NEWLAND CALIFORNIA	37-008117, 37-008121, 37-010685
SD-04174	NADB-R - 1124174; Voided - GALLEGO209	1999	GALLEGOS, DENNIS R. and NINA M. HARRIS	CULTURAL RESOURCE MONITORING REPORT FOR 11388 SORRENTO VALLEY ROAD CITY OF SAN DIEGO, CALIFORNIA	GALLEGOS AND ASSOCIATES	
SD-04322	NADB-R - 1124322; Voided - WESTEC60	1986	WESTEC SERVICES, INC. and CAROLYN KYLE	CULTURAL RESOURCE TESTING PROGRAM FOR SDI-12(W-662) LOCI L, M, N, &P PENASQUITOS CREEK	WESTEC	37-000012
SD-04330	NADB-R - 1124330; Voided - WESTEC63	1986	WESTEC	CULTURAL RESOURCE SURVEY: TEST OF SDI-5218, LA JOLLA	WESTEC	37-005218

Report List

Report No.	Other IDs	Year	Author(s)	Title	Affiliation	Resources
SD-04383	NADB-R - 1124383; Voided - ERCFE18	1989	ERC ENVIRONMENTAL AND ENERGY SERVICES	A CULTURAL AND PALAEOLOGICAL INVENTORY UPDATE FOR THE UNIVERSITY OF CALIFORNIA AT SAN DIEGO AND SCRIPPS INSTITUTION OF OCEANOGRAPHY	ERC	
SD-04387	NADB-R - 1124387; Voided - WESTEC43	1977	WESTEC and RICHARD CARRICO	ARCHAEOLOGICAL INVESTIGATIONS OF THE PROPOSED SCRIPPS CLINIC EXTENSION	WESTEC	
SD-04398	NADB-R - 1124398; Voided - KYLE101	1995	KYLE, CAROL YN	NORTH TORREY PINES BRIDGE OVER LOS PENASQUITOS CREEK	GALLEGOS AND ASSOCIATES	
SD-04414	NADB-R - 1124414; Voided - ASM22	1979	ASM, INC.	ARCHAEOLOGY SURVEY AND REPORT SVP#8 COUNTY OF SAN DIEGO (VIA SORRENTO VALLEY INDUSTRIAL PARK #8)	ASM, INC.	37-005826
SD-04480	NADB-R - 1124480; Voided - ROSEN48	1987	ROSEN, MARTIN	2ND SUPPLEMENTAL HISTORIC PROPERTY SURVEY - 11-SD-5, P.M. R29.51	ROSEN, M.	37-000197, 37-001103, 37-004513, 37-004615, 37-004627, 37-004629, 37-008121, 37-010143, 37-010144
SD-04490	NADB-R - 1124490; Voided - HIX1	1995	HIX, ANN B. and CITY OF SAN DIEGO	PUBLIC NOTICE OF DRAFT ENVIRONMENTAL IMPACT REPORT FOR TORREY RESERVE TERRACES	CITY OF SAN DIEGO	
SD-04511	NADB-R - 1124511; Voided - CITYSD160	1997	CITY OF SAN DIEGO	NOTICE OF PREPARATION OF A DRAFT ENVIRONMENTAL IMPACT REPORT TORREY RESERVE GATEWAY	CITY OF SAN DIEGO DEVELOPMENT & ENVIRONMENTAL PLANNING	
SD-04530	NADB-R - 1124530; Voided - WHITE 16	1995	WHITE, CHRIS	PRELIMINARY FINDING OF EFFECT (FOE) STATE ROAD 125-SOUTH	CALTRANS	37-006954, 37-007197, 37-012809
SD-04572	NADB-R - 1124572; Other - AFFINIS JOB#1017; Voided - GROSS553	1995	GROSS, TIMOTHY G.	ARCHAEOLOGICAL DATA RECOVERY PROGRAM: AIRTOUCH CELLULAR PROJECT AT THE BANK ROBBER SITE, CA-SDI-197 SORRENTO VALLEY, SAN DIEGO, CA	AFFINIS	37-000197
SD-04622	NADB-R - 1124622; Voided - WAHOFFT08	2001	WAHOFF, TANYA and JAMES CLELAND	CULTURAL RESOURCES SURVEY SORRENTO VALLEY TRUNK SEWER PROJECT SAN DIEGO COUNTY, CALIFORNIA	EDAW, INC.	37-001010

Report List

Report No.	Other IDs	Year	Author(s)	Title	Affiliation	Resources
SD-04715	NADB-R - 1124715; Voiced - CITYSD167	1992	CITY OF SAN DIEGO	APPENDICES TO THE DRAFT ENVIRONMENTAL IMPACT REPORT FOR THE LOS PENASQUITOS CANYON PRESERVE MASTER PLAN	CITY OF SAN DIEGO	37-000392, 37-000414, 37-000415, 37-000531, 37-001087, 37-001106, 37-005028, 37-005031, 37-005032, 37-005034, 37-005035, 37-005161, 37-005198, 37-005201, 37-005202, 37-005219, 37-005220, 37-005221, 37-005378, 37-005385, 37-005387, 37-005826, 37-008098, 37-008099, 37-008100, 37-008101, 37-008102, 37-008103, 37-008104, 37-008105, 37-008106, 37-008107, 37-008108, 37-008109, 37-008110, 37-008111, 37-008112, 37-008113, 37-008115, 37-008116, 37-008117, 37-008118, 37-008119, 37-008120, 37-008121, 37-008123, 37-008124, 37-008125, 37-008396, 37-008970, 37-008971, 37-009241, 37-009869
SD-04753	NADB-R - 1124753; Voiced - DAY03	1977	DAY, SANDRA	ARCHAEOLOGICAL INVESTIGATION AT SITE W-1761: TORREY PINES SCIENCE PARK UNIT 3	SANDRA DAY/WESTEC SERVICES INC	37-007223, 37-007224
SD-04754	NADB-R - 1124754; Voiced - CARRICO219	1977	CARRICO, RICHARD	RESULTS OF SURFACE AND SUBSURFACE TESTING AND MAPPING OF ARCHAEOLOGICAL SITES ON TORREY PINES SCIENCE PARK UNIT NO. 2	WESTEC SERVICES, INC	
SD-04813	NADB-R - 1124813; Voiced - MEALEY01	1997	MEALEY, MARLA	STATEWIDE RESOURCE MANAGEMENT PROGRAM PROJECT STATUS REPORT: ARCHAEOLOGICAL SITE REEVALUATION AND MAPPING AT TORREY PINES STATE	DEPT. PARKS AND RECREATION	37-000196, 37-000197, 37-000198, 37-000199, 37-000200, 37-001103, 37-004612, 37-004625, 37-004626, 37-007223, 37-007224, 37-007225, 37-009586, 37-009587, 37-009588, 37-009595, 37-009596, 37-009598, 37-009599, 37-009600, 37-009601, 37-009602, 37-009604, 37-009605, 37-010636, 37-010637, 37-014500, 37-014501
SD-04911	NADB-R - 1124911; Voiced - LAYLAND35	1985	Laylander, Don	Archaeological Survey Report for Proposed Widening & Ramp Construction Route I-5/ Carmel Valley Road San Diego County	Don Laylander	37-000197, 37-000531, 37-001010, 37-001103, 37-004605, 37-004614, 37-004615, 37-004627, 37-004629, 37-004647, 37-008121
SD-05040	NADB-R - 1125040; Voiced - CALTRANS27	1985	Caltrans	Historic Property Survey 11-SD-5 R30.0-R34.1	Dept. of Transportation	

Report List

Report No.	Other IDs	Year	Author(s)	Title	Affiliation	Resources
SD-05042	NADB-R - 1125042; Voided - ROSEN58	1987	Rosen, Martin	Archaeological Test Excavation Report, CA-SDI-197, A La Jollan Period Campsite in Sorrento Valley	Rosen, Martin	
SD-05147	NADB-R - 1125147; Other - 3306A; Voided - BERRYJ51	2000	BERRYMAN, JUDY	Cultural Resources Survey of Sewer Pump Station 45, Task 19, City of San Diego	RECON	37-004264, 37-008214, 37-008470, 37-008472
SD-05170	NADB-R - 1125170; Voided - CITYSD196	1997	City of San Diego	Public Notice of Draft Environmental Impact Report The Lodge at Torrey Pines	City of San Diego	
SD-05189	NADB-R - 1125189; Other - LDR 96-0464/35-0389; Voided - COOKJ55	1997	COOK, JOHN	Cultural Resource Update Report for Torrey Reserve Gateway	ASM Affiliates	37-000962, 37-004627, 37-008122, 37-010684
SD-05297	NADB-R - 1125297; Voided - CARRICO232	1988	CARRICO, RICHARD	DATA RECOVERY PROGRAM FOR A PORTION OF PUMP STATION 64 FORCE MAIN IMPROVEMENT WITHIN THE SOUTHWESTERN PORTION OF SDI-4609, THE VILLAGE OF YSTAGUA, SORRENTO VALLEY, DRAFT FINAL REPORT	WESTEC SERVICES	37-001010, 37-001064, 37-004513, 37-004609, 37-005443
SD-05485	NADB-R - 1125485; Voided - DUKE61	2002	DUKE CURT	CULTURAL RESOURCE ASSESSEMENT CINGULAR WIRELESS FACILITY NO SD.513-01 SAN DIEGO COUNTY CA	LSA ASSOCIATES INC	
SD-05644	NADB-R - 1125644; Voided - CITYSD 248	1993	CITY OF SAN DIEGO	DEIR FOR SORRENTO HILLS COMMUNITY PLAN AMENDMENT II/TORREY VIEW	CITY OF SAN DIEGO	
SD-05917	NADB-R - 1125917; Voided - CITYSD 284	1996	CITY OF SAN DIEGO	NEGATIVE DECLARATION FOR MIRAMAR PIPELINE PHASE II	CITY OF SAN DIEGO	
SD-06198	NADB-R - 1126198; Voided - LAYLAND 44	1986	LAYLANDER, DON	FIRST SUPPLEMENTAL HISTORIC PROPERTY SURVEY 11-SD-5 P.M.R30.0-R34.5 11222-030100	CALIFORNIA DEPARTMENT OF TRANSPORTATION	
SD-06417	NADB-R - 1126417; Voided - CITYSD 442	1997	CITY OF SAN DIEGO	EIR FOR THE LODGE AT TORREY PINES	CITY OF SAN DIEGO	
SD-06629	NADB-R - 1126629; Voided - ROSEN 80	1999	ROSEN, MARTIN	HISTORIC PROPERTY SURVEY REPORT OCEANSIDE TO SAN DIEGO-RAIL TO TRAIL	MARTIN ROSEN	37-004513, 37-004609, 37-005443, 37-006751, 37-012453, 37-013212
SD-06695	NADB-R - 1126695; Voided - GALLEGO 21	1986	GALLEGOS, DENNIS and ANDREW PIGNOLO	CULTURAL RESOURCE SURVEY FOR THE SORRENTO WEST PROPERTY	WESTEC SERVICES, INC.	37-000197, 37-001103, 37-010143
SD-06918	NADB-R - 1126918; Voided - CITYSD 607	1999	CITY OF SAN DIEGO	PUBLIC NOTICE OF PROPOSED MITIGATED NEGATIVE DECLARATION SORRENTO POINTE	CITY OF SAN DIEGO	

Report List

Report No.	Other IDs	Year	Author(s)	Title	Affiliation	Resources
SD-06941	NADB-R - 1126941; Voided - CITYSD 630	1999	CITY OF SAN DIEGO	NOTICE OF PREPARATION OF A DRAFT EIR-SORRENTO VALLEY ROAD	CITY OF SAN DIEGO	
SD-06945	NADB-R - 1126945; Voided - CITYSD 634	1999	CITY OF SAN DIEGO	PUBLIC NOTICE OF PROPOSED MITIGATED NEGATIVE DECLARATION- SORRENTO POINTE	CITY OF SAN DIEGO	
SD-06994	NADB-R - 1126994; Voided - CITYSD 594	2000	CITY OF SAN DIEGO	PUBLIC NOTICE OF DRAFT MITIGATED NEGATIVE DECLARATION SORRENTO CREEK DRAINAGE CHANNEL	CITY OF SAN DIEGO	
SD-07059	NADB-R - 1127059; Voided - CITYSD 698	2000	CITY OF SAN DIEGO	PUBLIC NOTICE OF PROPOSED MITIGATED NEGATIVE DECLARATION- SORRENTO CREEK DRAINAGE CHANNEL	CITY OF SAN DIEGO	
SD-07150	NADB-R - 1127150; Voided - CITYSD 738	2000	CITY OF SAN DIEGO	PUBLIC NOTICE OF PROPOSED NEGATIVE DECLARATION THE BUMP PROJECT	CITY OF SAN DIEGO	
SD-07429	NADB-R - 1127429; Voided - CITYSD 800	2002	CITY OF SAN DIEGO	PUBLIC NOTICE OF A PROPOSED MITIGATED NEGATIVE DECLARATION 3377 CARMEL MOUNTAIN ROAD PROJECT, TORREY PINES	CITY OF SAN DIEGO	
SD-07530	NADB-R - 1127530; Voided - LSA3	2002	LSA	Cultural Resource Assessment AT&T Wireless Services Facility #10002A-03	LSA	
SD-07641	NADB-R - 1127641; Voided - CITY SD845	2002	CITY OF SAN DIEGO	NOTICE OF PREPARATION OF A DRAFT ENVIRONMENTAL IMPACT REPORT SORRENTO VALLEY ROAD REUSE PROJECT	CITY OF SAN DIEGO	
SD-07733	NADB-R - 1127733; Voided - WESTEC 33	1982	WESTEC	SORRENTO HILLS COMMUNITY PLAN DRAFT EIR	WESTEC	37-000962, 37-001076
SD-07756	NADB-R - 1127756; Other - 2197E; Voided - WADE 125	1991	WADE, SUE	CULTURAL RESOURCE SURVEY OF THE LA JOLLA SPECTRUM PROPERTY, LA JOLLA, CA	RECON	
SD-07758	NADB-R - 1127758; Voided - COOKJ 68	1998	COOK, JOHN R.	LETTER REPORT FOR PID PERMIT NO. 89- 0269 CRM: THE LA JOLLA SPECTRUM DEVELOPMENT PROJECT	ASM AFFILIATES	
SD-07759	NADB-R - 1127759; Voided - CITYSD 863	2002	CITY OF SAN DIEGO	SIDNEY KIMMEL CANCER CENTER SITE DEVELOPMENT PERMIT AND COASTAL DEVELOPMENT PERMIT	CITY OF SAN DIEGO	
SD-07871	NADB-R - 1127871; Voided - DUKE 175	2002	DUKE, CURT	CULTURAL RESOURCE ASSESSMENT AT&T WIRELESS SERVICES FACILITY NO. 10002B SAN DIEGO COUNTY, CALIFORNIA	LSA ASSOC.	

Report List

Report No.	Other IDs	Year	Author(s)	Title	Affiliation	Resources
SD-07896	NADB-R - 1127896; Voided - COOK80	1998	JOHN R. COOK	LA JOLLA SPECTRUM DEVELOPMENT PROJECT		
SD-08026	NADB-R - 1128026; Voided - KYLE172	2002	Kyle, Carolyn F.	Cultural Resources Survey for a Parcel Located on Carmel Valley Road in the Torrey Pines Community Plan Area City of San Diego, California	Kyle Consulting	37-017121
SD-08136	NADB-R - 1128136; Voided - COOKJ72	2000	COOK, JOHN R.	MAYBERRY AND 45TH STREETS SEWER EMERGENCY CULTURAL RESOURCES EVALUATION	ASM AFFILIATES	
SD-08202	NADB-R - 1128202; Voided - CITYSD1017	2002	CITY OF SAN DIEGO	PUBLIC NOTICE OF A PROPOSED MITIGATED NEGATIVE DECLARATION: SORRENTO VALLEY TRUNK SEWER AND PUMP STATION 89	CITY OF SAN DIEGO LAND DEVELOPMENT	
SD-08280	NADB-R - 1128280; Voided - CITYSD1012	2002	CITY OF SAN DIEGO	PUBLIC NOTICE OF A DRAFT ENVIRONMENTAL IMPACT REPORT FOR SORRENTO VALLEY ROAD REUSE	DEVELOPMENT SERVICES DEPARTMENT	
SD-08356	NADB-R - 1128356; Voided - ROSEN 99	2003	ROSEN, MARTIN	NORTH TORREY PINES BRIDGE BIO	CALTRANS	
SD-08532	NADB-R - 1128532; Other - JOB NO. J5465; Voided - KALDENBE53	1976	KALDENBERG, RUSSELL L.	AN ARCHAEOLOGICAL IMPACT SURVEY FOR NORTH SORRENTO VALLEY WEST INDUSTRIAL PARK	RECON	
SD-08535	NADB-R - 1128535; Voided - FINK121	1983	FINK, GARY	THE CULTURAL RESOURCES OF LOS PENASQUITOS REGIONAL PARK, SAN DIEGO, CALIFORNIA	COUNTY OF SAN DIEGO DEPT. OF PUBLIC WORKS	37-001087, 37-005032, 37-005034, 37-005201, 37-005202, 37-008098, 37-008099, 37-008100, 37-008101, 37-008102, 37-008103, 37-008104, 37-008105, 37-008106, 37-008107, 37-008108, 37-008109, 37-008110, 37-008111, 37-008112, 37-008113, 37-008114, 37-008115, 37-008116, 37-008117, 37-008118, 37-008119, 37-008120, 37-008121, 37-008122, 37-008123, 37-008124, 37-008125
SD-08564	NADB-R - 1128564; Voided - EIGHMEY22	1999	EIGHMEY, JAMES and JOHN R. COOK	CULTURAL RESOURCE SURVEY, EVALUATION AND DATA RECOVERY PLAN FOR THE LAKE JENNINGS PROPERTY, ALPINE CALIFORNIA	ASM AFFILIATES	37-017084

Report List

Report No.	Other IDs	Year	Author(s)	Title	Affiliation	Resources
SD-08852	NADB-R - 1128852; Other - CONTRACT NO, RR-272024; Voided - WADE129	1990	WADE, SUE A., STEPHEN R. VAN WORMER, and DAYLE M. CHEEVER	HISTORIC PROPERTIES INVENTORY FOR NORTH CITY WATER RECLAMATION FACILITIES CLEAN WATER PROGRAM FOR GREATER SAN DIEGO, SAN DIEGO, CALIFORNIA	RECON	37-000045, 37-000046, 37-002723, 37-004513, 37-004609, 37-005017, 37-005204, 37-005443, 37-008803, 37-010437, 37-010438, 37-010531, 37-011750, 37-011751, 37-011752, 37-011753, 37-011754, 37-011783, 37-011784, 37-011785
SD-09145	NADB-R - 1129145; Voided - GALLEGOS97	1991	GALLEGOS, DENNIS and CAROLYN KYLE	CULTURAL RESOURCE SURVEY REPORT SAN DIEGO BIKEWAYS PROJECT SAN DIEGO, CALIFORNIA	GALLEGOS AND ASSOCIATES	
SD-09156	NADB-R - 1129156; Voided - MCGINNIS28	2004	MCGINNIS, PATRICK and MICHAEL BAKSH	CULTURAL RESOURCES SURVEY OF THE POS PENASQUITOS WATERSHED SEDIMENTATION BASIN PROJECT, CITY OF SAN DIEGO, CALIFORNIA	TIERRA ENVIRONMENTAL SERVICES	
SD-09518	NADB-R - 1129518; Voided - MEALEY08	2005	Mealey, Maria	Archaeological Site Condition Assessment within Torrey Pines State Reserve for Storm Damage following the 2004/2005 Rainfall Season	California State Parks	37-000196, 37-000198, 37-000199, 37-004625, 37-004626, 37-007225, 37-009588, 37-009595, 37-009596, 37-009599, 37-009600, 37-009602, 37-009603, 37-009604, 37-009605, 37-010636, 37-010637, 37-014500, 37-014501, 37-015851, 37-015852, 37-015857, 37-015858, 37-015860, 37-015861, 37-015862, 37-015863, 37-015864, 37-015867, 37-018328, 37-024485, 37-024486, 37-024489, 37-024490, 37-024491, 37-024492, 37-024494, 37-024496, 37-024501, 37-024503, 37-024505, 37-024506, 37-024543, 37-024544, 37-024545, 37-024601, 37-024769, 37-024770, 37-024772, 37-024773, 37-024774, 37-024775, 37-024777, 37-024778, 37-024780, 37-024782, 37-024783
SD-09558	NADB-R - 1129558; Voided - GUERREM10	2002	Guerrero, Monica and Gallegos, Dennis	Cultural Resource Survey for the Torrey Pines Reserve Habitat Restoration Site, San Diego, California	Gallegos & Associates	
SD-09649	NADB-R - 1129649; Voided - KYLE 304	2001	Kyle, Carolyn	Cultural Resource Assessment/Evaluation for Cingular Wireless Site SDS19-01, San Diego, California	Kyle Consulting	

Report List

Report No.	Other IDs	Year	Author(s)	Title	Affiliation	Resources
SD-10388	NADB-R - 1130388; Voided - MEALEY10	2006	Mealey, Maria M.	DATA RECOVERY AT STORM-DAMAGED SITES IN TORREY PINES STATE PRESERVE, SOUTHERN SERVICE CENTER	Southern Service Center	
SD-10627	NADB-R - 1130627; Voided - LOSEE13	2007	LOSEE, CAROLYN	CULTURAL RESOURCES ANALYSIS FOR VERIZON WIRELESS SITE # 61070112: 10350 NORTH TORREY PINES ROAD, SAN DIEGO, CA 92037	ARCHAEOLOGICAL RESOURCES TECHNOLOGY	
SD-10664	NADB-R - 1130664; Voided - PIERSON145	2006	PIERSON, LARRY J.	MITIGATION MONITORING OF THE TORREY PINES GOLF COURSE IMPROVEMENTS PROJECT	BRIAN F. SMITH AND ASSOCIATES	
SD-10755	NADB-R - 1130755; Voided - COOKJ113	1997	COOK, JOHN R.	TORREY PINES GATEWAY RESOURCES STUDY LDR 96-0464/35-0389	ASM Affiliates	37-000962, 37-004627, 37-008122, 37-010684
SD-10758	NADB-R - 1130758; Voided - COOKJ115	1988	COOK, JOHN R.	CULTURAL RESOURCES SURVEY AND SIGNIFICANCE EVALUATION OF THE LA JOLLA PINES TECHNOLOGY CENTER PROJECT	ASM Affiliates, Inc.	
SD-10885	NADB-R - 1130885; Voided - MATTING01	2007	MATTINGLY, SCOTT A.	ARCHAEOLOGICAL AND GEOSPATIAL INVESTIGATIONS OF FIRE-ALTERED ROCK FEATURES AT TORREY PINES STATE RESERVE, SAN DIEGO, CALIFORNIA	SCOTT A. MATTINGLY	37-009595
SD-10923	NADB-R - 1130923; Voided - HISTOR1154		TANNER, DON and MARTY STOTT	A STUDY OF THE SANTA MARIA DE LOS PENASQUITOS RANCHO		
SD-11103	NADB-R - 1131103; Voided - ROBBINS203	2007	ROBBINS-WADE, MARY and ANDREW GILETTI	ARCHAEOLOGICAL MONITORING: 10996 TORREY ANA, LA JOLLA, SAN DIEGO, CALIFORNIA PROJECT NO. 5844	AFFINIS	
SD-11144	NADB-R - 1131144; Voided - HECTOR180	2007	HECTOR, SUSAN	ENGINA-PENASQUITOS TRANSMISSION LINE RECORDS SEARCH	ASM AFFILIATES, INC.	
SD-11414	NADB-R - 1131414; Voided - ROBBINS218	2007	ROBBINS-WADE, MARY	ARCHAEOLOGICAL SURVEY REPORT, I-5 / GENESEE AVENUE INTERCHANGE PROJECT, SAN DIEGO, CALIFORNIA	AFFINIS	37-001010, 37-009288
SD-11483	NADB-R - 1131483; Voided - ROBBINS221	2007	ROBBINS-WADE, MARY	HISTORIC PROPERTY SURVEY REPORT - I-5 / GENESEE AVENUE INTERCHANGE PROJECT	AFFINIS	
SD-11499	NADB-R - 1131499; Voided - GROSS92	2005	GROSS, G. TIMOTHY	TEST EXCAVATIONS AT CA-SDI-95688 AND CA-SDI-14447, TWO SITES ON TORREY PINES STATE RESERVE	AFFINIS	37-000588, 37-015851

Report List

Report No.	Other IDs	Year	Author(s)	Title	Affiliation	Resources
SD-11689	NADB-R - 1131689; Voided - PIERSON185	2008	PIERSON, LARRY J.	ARCHAEOLOGICAL RESOURCE REPORT FORM: MITIGATION MONITORING OF THE TORREY PINES GOLD COURSE CLUBHOUSE REPLACEMENT - PHASE I IMPROVEMENTS - PARKING LOT	BRIAN F. SMITH AND ASSOCIATES	
SD-11761	NADB-R - 1131761; Voided - DOMINICI67	2007	DOMINICI, DEB	HISTORIC PROPERTY SURVEY REPORT, I- 5 NORTH COAST WIDENING PROJECT	CALTRANS	
SD-11825	NADB-R - 1131825; Voided - ROSENM124	2008	ROSEN, MARTIN D.	HISTORIC PROPERTY SURVEY REPORT FOR THE I-805 DIRECT ACCESS RAMP AND CARROLL CANYON ROAD EXTENSION PROJECT, CITY OF SAN DIEGO, CALIFORNIA	CALTRANS	
SD-11826	NADB-R - 1131826; Other - AFFINIS JOB NO. 2215; Voided - ROBBINS255	2008	ROBBINS-WADE, MARY	ARCHAEOLOGICAL RESOURCES ANALYSIS FOR THE MASTER STORMWATER SYSTEM MAINTENANCE PROGRAM, SAN DIEGO, CALIFORNIA PROJECT. NO. 42891	AFFINIS	
SD-11878	NADB-R - 1131878; Voided - BONNEW182	2008	BONNER, WAYNE H., MARIE AISLIN-KAY, and KATHLEEN CRAWFORD	CULTURAL RESOURCE RECORDS SEARCH AND SITE VISIT RESULTS FOR A&T MOBILITY, LLC FACILITY CANDIDATE SD0942 (TORREY PINES LODGE), 11480 NORTH TORREY PINES ROAD, LA JOLLA, SAN DIEGO COUNTY, CALIFORNIA	MICHAEL BRANDMAN ASSOCIATES	
SD-12071	NADB-R - 1132071; Voided - BURKEM56	2008	BURKE LIA, MARIE	HISTORICAL ASSESSMENT OF 3344 INDUSTRIAL COURT	OFFICE OF MARIE BURKE LIA	
SD-12165	NADB-R - 1132165; Voided - ROSENM130	2009	ROSEN, MARTIN	FIRST SUPPLEMENTAL ARCHAEOLOGICAL SURVEY REPORT FOR THE ZAMUDIO BIOLOGICAL MITIGATION PARCEL FOR THE INTERSTATE 805 DIRECT ACCESS RAMP AND CARROLL CANYON ROAD EXTENSION PROJECT CITY OF SAN DIEGO, CALIFORNIA	CALIFORNIA DEPARTMENT OF TRANSPORTATION	
SD-12200	NADB-R - 1132200; Other - Project No. 42891 SCH.No. 200101032; Voided - CITYSD1081	2009		DRAFT ENVIRONMENTAL IMPACT REPORT FOR THE MASTER STORM WATER SYSTEM MAINTENANCE PROGRAM (MSWSMP)	CITY OF SAN DIEGO DEVELOPMENT SERVICES DEPARTMENT	

Report List

Report No.	Other IDs	Year	Author(s)	Title	Affiliation	Resources
SD-12422	NADB-R - 1132422; Voided - NIGHAS68	2001	NI GHABHLAIN, SINEAD and DREW PALLETTE	A CULTURAL RESOURCES INVENTORY FOR THE ROUTE REALIGNMENT OF THE PROPOSED PF. NET / AT&T FIBER OPTICS CONDUIT OCEANSIDE TO SAN DIEGO, CALIFORNIA	ASM AFFILIATES, INC.	
SD-12548	NADB-R - 1132548; Voided - BONNEW256	2008	BONNER, WAYNE, MARIE AISLIN-KAY, and KATHLEEN CRAWFORD	CULTURAL RESOURCES RECORDS SEARCH AND SITE VISIT RESULTS FOR VERIZON WIRELESS CANDIDATE "SCRIPPS GREEN," NORTH TORREY PINES ROAD, SAN DIEGO, SAN DIEGO COUNTY, CALIFORNIA	MICHAEL BRANDMAN ASSOCIATES	
SD-12822	NADB-R - 1132822; Voided - ROSENM143	2010	ROSEN, MARTIN D.	SECOND SUPPLEMENTAL HISTORIC PROPERTY SURVEY (HPSR-S2) FOR THE INTERSTATE 805 DIRECT ACCESS RAMP (DAR) AND CARROLL CANYON ROAD EXTENSION PROJECT; COMPLETION OF SECTION 106 COMPLIANCE IN ACCORDANCE WITH THE STATEWIDE PROGRAMMATIC AGREEMENT	ROSEN, MARTIN D.	37-002723, 37-004513, 37-010251
SD-13006	NADB-R - 1133006; Other - SCH. NO. 2004101032 PROJECT NO. 42891; Voided - ROBBINS316	2011		MASTER STORM WATER SYSTEM MAINTENANCE PROGRAM - DRAFT RECALCULATED PROGRAM ENVIRONMENTAL IMPACT REPORT	CITY OF SAN DIEGO	
SD-13134	NADB-R - 1133134; Voided - CITYSD1091	2011	CITY OF SAN DIEGO	SORRENTO POINTE	CITY OF SAN DIEGO	37-000197
SD-13135	NADB-R - 1133135; Voided - CHEEVER113	1998	CHEEVER, DAYLE and RUSSELL O. COLLETT	RESULTS OF EXTENDED PHASE II SAMPLING AT CA-SDI-197, SORRENTO POINT PROJECT SAN DIEGO, CALIFORNIA	RECON	37-000197
SD-13280	NADB-R - 1133280; Voided - PRICEH30	2009	PRICE, HARRY J.	UPDATED HISTORICAL RESOURCES INFORMATION FOR THE SORRENTO POINTE PROJECT (RECON NUMBER 2925- 1)	RECON	37-000197
SD-13474	NADB-R - 1133474; Voided - NIGHAST71	2010	NI GHABHLAIN, SINEAD, MARK BECKER, DAVE IVERSON, SHERRI ANDREWS, and SCOTT WOLF	CULTURAL AND HISTORICAL INVENTORY AND IMPACTS ASSESSMENT REPORT FOR SAN DIEGO ASSOCIATION OF GOVERNMENTS SORRENTO-TO- MIRAMAR DOUBLE TRACK PROJECT, SAN DIEGO COUNTY, CALIFORNIA	ASM AFFILIATES, INC.	37-004513, 37-004609, 37-005443, 37-010438

Report List

Report No.	Other IDs	Year	Author(s)	Title	Affiliation	Resources
SD-13475	NADB-R - 1133475; Voided - NIGHAS72	2010	NI GHABHLAIN, SINEAD	HISTORIC PROPERTY TREATMENT PLAN FOR CA-SDI-4609/SDM-W-654, SORRENTO-TO-MIRAMAR DOUBLE TRACK PROJECT, SAN DIEGO COUNTY, CALIFORNIA	ASM AFFILIATES, INC.	37-004513, 37-004609, 37-005443, 37-010438
SD-13503	NADB-R - 1133503; Voided - STROPT131	2011	STROPES, TRACY A. and BRIAN F. SMITH	A PHASE I CULTURAL RESOURCES STUDY FOR THE 11099 NORTH TORREY PINES ROAD PROJECT SAN DIEGO, CALIFORNIA	BRIAN F. SMITH AND ASSOCIATES, INC.	37-007224, 37-017079, 37-017178, 37-026490
SD-13626	NADB-R - 1133626; Voided - MORGAN05	2011	MORGAN, NICHOLE B.	TCM ACCESS ROAD GRADING PROJECT, CULTURAL RESOURCES INVENTORY REPORT	HDR	37-000744, 37-001097, 37-004575, 37-004607, 37-004905, 37-004927, 37-005826, 37-006134, 37-006135, 37-006139, 37-006140, 37-006830, 37-006858, 37-008280, 37-008914, 37-009089, 37-009655, 37-009708, 37-009980, 37-010671, 37-010672, 37-010823, 37-010875, 37-011728, 37-011729, 37-012209, 37-012461, 37-012818, 37-012820, 37-012821, 37-012940, 37-013084, 37-013085, 37-014563, 37-015863, 37-015867, 37-018386, 37-024458, 37-026492, 37-028681, 37-028737, 37-030107
SD-13916	NADB-R - 1133916; Voided - CALTRANS88	2012	CALTRANS	INTERSTATE 5 NORTH COAST CORRIDOR PROJECT SUPPLEMENTAL DRAFT ENVIRONMENTAL IMPACT REPORT/ ENVIRONMENTAL IMPACT STATEMENT	CALTRANS	
SD-14065	NADB-R - 1134065; Voided - NIGHAS93	2012	NI GHABHLAIN, SINEAD	NEGATIVE CULTURAL RESOURCE SURVEY FOR THE SORRENTO VALLEY DOUBLE TRACK PROJECT MITIGATION AREA, SAN DIEGO COUNTY, CALIFORNIA	ASM AFFILIATES, INC.	37-000631, 37-004625, 37-004627, 37-004647, 37-007224, 37-008121, 37-008122, 37-012122, 37-026489, 37-026490
SD-14066	NADB-R - 1134066; Voided - GUNDS03	2012	GUNDERMAN, SHELBY, SARAH STRINGER- BOWSHER, and SINEAD NI GHABHLAIN	CULTURAL AND HISTORICAL RESOURCES REPORT FOR THE SORRENTO VALLEY DOUBLE TRACK PROJECT	ASM AFFILIATES, INC.	37-000197, 37-001010, 37-004647, 37-017178

Report List

Report No.	Other IDs	Year	Author(s)	Title	Affiliation	Resources
SD-14086	NADB-R - 1134086; Voided - PHAM02	2012	PHAM, ANGELA N. and SINEAD NI GHABHLAIN	CULTURAL AND HISTORICAL RESOURCES CONSTRAINTS REPORT FOR THE SAN DIEGUITO BRIDGE REPLACEMENT AND SECOND TRACK PROJECT; DEL MAR TUNNEL ALTERNATIVES ANALYSIS	ASM AFFILIATES, INC.	37-000195, 37-004612, 37-004629, 37-008591, 37-009596, 37-009596, 37-009597, 37-010149, 37-010940, 37-015857, 37-015859, 37-015861, 37-015862, 37-015863, 37-017053, 37-017121, 37-017122, 37-018328, 37-024483, 37-024484, 37-024485, 37-024486, 37-024487, 37-024488, 37-024489, 37-024490, 37-024495, 37-024496, 37-024497, 37-024498, 37-024499, 37-024500, 37-024501, 37-024504, 37-024505, 37-024619, 37-026491, 37-026492
SD-14088	NADB-R - 1134088; Voided - NIGHAS105	2012	NI GHABHLAIN, SINEAD	TASK ORDER 33, AMENDMENT 5: CULTURAL RESOURCE STUDY FOR THE SORRENTO TO MIRAMAR DOUBLE TRACK- PHASE 1 TASK 2- ENVIRONMENTAL CLEARANCE AND PREMITTING, PINES MAINTENANCE SPUR TRACK CULTURAL RESOURCE TESTING	ASM AFFILIATES, INC.	
SD-14416	NADB-R - 1134416; Voided - LOFTUSS69	2012	LOFTUS, SHANNON	CULTURAL RESOURCE RECORDS SEARCH AND SITE SURVEY AT&T SITE SS0074 HILTON TORREY PINES, 10950 TORREY PINES ROAD SAN DIEGO, SAN DIEGO COUNTY, CALIFORNIA 92037	ACE ENVIRONMENTAL, INC.	
SD-14495	NADB-R - 1134495; Voided - CALTRANS89	2013	CALTRANS	INTERSTATE 5 NORTH COAST CORRIDOR PROJECT FINAL ENVIRONMENTAL IMPACT REPORT/ ENVIRONMENTAL IMPACT STATEMENT AND SECTION 4(F) EVALUATION	CALTRANS	
SD-14506	NADB-R - 1134506; Voided - BIETZS01	2013	BIETZ, SPENCER	LETTER REPORT: ETS 25436- CULTURAL RESOURCES MONITORING REPORT FOR REPLACEMENT ACTIVITIES FOR P63458 ANCHOR REPLACEMENT, SORRENTO VALLEY, CITY OF SAN DIEGO, CALIFORNIA	AECOM	37-001010
SD-14615	NADB-R - 1134615; Voided - CALTRANS90	2007	CALTRANS	INTERSTATE 5 CORRIDOR PROJECT HISTORIC PROPERTY SURVEY REPORT AND SUPPLEMENTALS	CALTRANS	

Report List

Report No.	Other IDs	Year	Author(s)	Title	Affiliation	Resources
SD-15590	NADB-R - 1135590	2013	Don C. Perez	CULTURAL RESOURCES SURVEY, TORREY MERGE / ENSITE #16066 (116733), 10999 SORRENTO VALLEY ROAD, SAN DIEGO, SAN DIEGO COUNTY, CALIFORNIA 92121	EBI Consulting	
SD-15681	NADB-R - 1135681	2014	Harry J. Price	Results of Historical Resources Survey of the Spectrum, 3013 Science Park Road Project	RECON Environmental Inc	
SD-15682	NADB-R - 1135682	2015	Harry J. Price	Results of the Controlled Destruction of CA-SDI-197 at the Sorrento Pointe Project, Sorrento Valley, San Diego	RECON Environmental, Inc	
SD-15708	NADB-R - 1135708	2014	Ian Scharlotta	ARCHAEOLOGICAL SURVEY, TESTING AND EVALUATION FOR SITES CA-SDI-200 AND CA-SDI-9594, TORREY PINES NORTH GOLF COURSE GENERAL DEVELOPMENT PLAN, SAN DIEGO, CALIFORNIA PROJECT NO. 346889	ASM Affiliates, Inc.	
SD-15908	NADB-R - 1135908	2013	Carmen Zepeda-Herrman	DRAFT RESULTS OF HISTORICAL RESOURCES SURVEY OF CAMPUS POINTE PROJECT	Recon	
SD-15914	NADB-R - 1135914	2015	Carmen Zepeda-Herrman and Harry Price	DRAFT ENVIRONMENTAL IMPACT REPORT FOR THE CAMPUS POINTE PROJECT, SAN DIEGO, CALIFORNIA PROJECT NO. 336364, SCH NO. 2014091073	Recon	
SD-15996	NADB-R - 1135996	2014	Sarah Stringer-Bowsher and Shannon Davis	HISTORICAL RESOURCES TECHNICAL REPORT FOR TORREY PINES GOLF COURSE, 11480 NORTH TORREY PINES ROAD, SAN DIEGO, CALIFORNIA	ASM Affiliates	37-033597
SD-16091	NADB-R - 1136091; Submitter - 14-481-155-040	2014	Shannon L. Loftus	CULTURAL RESOURCE RECORDS SEARCH AND SITE SURVEY AT&T SITE SS0074 HILTON TORREY PINES 10950 TORREY PINES ROAD SAN DIEGO, SAN DIEGO COUNTY, CALIFORNIA 92037	Ace Environmental	
SD-16104	NADB-R - 1136104; Submitter - 61142543	2014	Don C. Perez	ARCHAEOLOGICAL SENSITIVITY ASSESSMENT SCIENCE PARK / ENSITE #18294 (276768) 10905 ROAD TO THE CURE SAN DIEGO, SAN DIEGO COUNTY, CALIFORNIA 92121 EBI PROJECT #61142543	EBI Consulting	

Report List

Report No.	Other IDs	Year	Author(s)	Title	Affiliation	Resources
SD-16127	NADB-R - 1136127	2008	Deb Dominici and Don Laylander	2007 CULTURAL RESOURCES TREATMENT PLAN NORTH COAST INTERSTATE 5 CORRIDOR	CALTRANS	
SD-16131	NADB-R - 1136131	2013	Michelle Blake	SIXTH SUPPLEMENTAL HISTORIC PROPERTY SURVEY REPORT (HPSR): REVISED AREA OF POTENTIAL EFFECTS (APE) I-5 NORTH COAST CORRIDOR	Caltrans	
SD-16172	NADB-R - 1136172; Submitter - 2001.64	2015	Brian Williams	ARCHAEOLOGICAL SURVEY FOR SAN DIEGO GAS & ELECTRIC'S PROPOSED P60971 REMOVAL FROM SERVICE AND P60953 ANCHOR INSTALLATION PROJECT, TORREY PINES STATE NATURAL RESERVE, SAN DIEGO COUNTY, CALIFORNIA (SDG&E ETS #30611, ASM PROJECT# 2001.64, STATE PARKS 412 A PERMIT #28-15)	ASM Affiliates	
SD-16330	NADB-R - 1136330	2015	ROY, JULIE	LETTER REPORT: ETS 30453 - CULTURAL RESOURCES SURVEY FOR POLE BRUSHING PROJECT, VARIOUS LOCATIONS, SAN DIEGO COUNTY, CALIFORNIA - IO 6013464	AECOM	
SD-16396	NADB-R - 1136396; Submitter - 20210.04	2015	GUNDERMAN CASTELLS, SHELBY	NORTH COUNTY TRANSIT DISTRICT (NCTD) SORRENTO VALLEY DOUBLE TRACK ATCS ANTENNA PROJECT AT THE NEW CONTROL POINT TORREY, MILE POST 247.8, SAN DIEGO, SAN DIEGO COUNTY, CALIFORNIA	ASM Affiliates	
SD-16775	NADB-R - 1136775; Submitter - 20370	2014	GUNDERMAN CASTELLS, SHELBY, BECKER, MARK, SCHARLOTTA, IAN, QUACH, TONY, and GHABHAIN, SINEAD NI	DATA RECOVERY EXCAVATIONS AT CA-SDI-4609/SDM-W-654, ETHNOHISTORIC VILLAGE OF YSTAGUA, FOR THE SAN DIEGO ASSOCIATION OF GOVERNMENTS SORRENTO-TO-MIRAMAR DOUBLE TRACK PHASE ONE PROJECT, SAN DIEGO, CALIFORNIA	ASM Affiliates	37-004609
SD-16801	NADB-R - 1136801	2015	PRICE, HARRY J.	ARCHAEOLOGICAL RESOURCES REPORT FOR THE SPECTRUM 3 AND 4, 3115 AND 3215 MERRYFIELD ROW PROJECT SAN DIEGO, CALIFORNIA	Recon	

Report List

Report No.	Other IDs	Year	Author(s)	Title	Affiliation	Resources
SD-16960	NADB-R - 1136960	2016	WHITAKER, JAMES E.	ETS #34110 CULTURAL RESOURCES SURVEY FOR THE TL 13810 CMP REPLACE Z96765, Z96766, Z96767, Z96768; PENASQUITOS PROJECT, SAN DIEGO COUNTY, CALIFORNIA	HDR	37-001106, 37-031095, 37-035231
SD-17008	NADB-R - 1137008	1989	HECTOR, SUSAN and Cheever, Dayle E.	RESULTS OF AN ARCHAEOLOGICAL MONITORING PROJECT IN SORRENTO VALLEY, CITY OF SAN DIEGO	RECON	
SD-17050	NADB-R - 1137050	2017	MEALEY, MARLA and Rosario, A. Del	ARCHAEOLOGICAL SURVEY REPORT TPSNR UTILITY MODERNIZATION SURVEY	Department of Parks and Recreation	37-004625, 37-009600, 37-015860, 37-015864, 37-024767, 37-024783
SD-17051	NADB-R - 1137051	2016	LOWER, KELLY and Borwn, Katlin	ARCHAEOLOGICAL MONITORING REPORT FOR TORREY PINES STATE NATURAL RESERVE TRAILS AND OVERLOOKS ACCESSIBILITY PROJECT 2008-2015	California State Parks	
SD-17103	NADB-R - 1137103; Submitter - 60515408	2017	FOGLIA, SHANNON E., Theodore G. Cooley, Monica Mello, Brian Spells, Rachel Drossler, Tim Wolfe, and Earl Morales	CULTURAL RESOURCES SURVEY REPORT FOR THE PROPOSED SAN DIEGO GAS & ELECTRIC TL674A RECONFIGURATION & TL666D REMOVAL PROJECT, SAN DIEGO COUNTY, CALIFORNIA	AECOM	37-000191, 37-000192, 37-000193, 37-000197, 37-000531, 37-000686, 37-005957, 37-007289, 37-010143, 37-012121, 37-012122, 37-014052, 37-015861, 37-015862, 37-015863, 37-015867, 37-016571, 37-016572, 37-017122, 37-024485, 37-026492, 37-033076, 37-033077, 37-033095, 37-034567, 37-035936, 37-036412, 37-036413, 37-036414, 37-036415, 37-036416, 37-036417, 37-036418, 37-036419, 37-036420, 37-036422, 37-036423, 37-036430
SD-17232	NADB-R - 1137232; Submitter - BCR Project No. SYN1628	2017	BRUNZELL, DAVID	SAN DIEGO 55 FIBER PROJECT, SAN DIEGO COUNTY, CALIFORNIA (BCR CONSULTING PROJECT NO. SYN1628)	BCR Consulting LLC	
SD-17488	NADB-R - 1137488	2018	FOGLIA, ALBERTO B.	ARCHAEOLOGICAL MONITORING FOR TL6905 VEGETATION TRIMMING AT POLE Z102717, SAN DIEGO, SAN DIEGO COUNTY, CALIFORNIA (SDG&E ETS # 37449, PANGIS PROJECT # 1402.13)	PANGIS, INC.	
SD-18390	NADB-R - 1138390	2019	JORDAN, AMY	ARCHAEOLOGICAL SURVEY FOR AN SDG&E POLE REPLACEMENT PROJECT, 3 POLES TORREY PINES, SAN DIEGO COUNTY, CALIFORNIA (SDG&E ETS# 23296, ASM PROJECT# 23007.25)	ASM AFFILIATES	

Report List

Report No.	Other IDs	Year	Author(s)	Title	Affiliation	Resources
SD-18838	NADB-R - 1138838	2021	JORDAN, AMY	ARCHAEOLOGICAL MONITORING FOR TCM ACCESS ROADS, ANNUAL REPORT 2020, SAN DIEGO COUNTY, CALIFORNIA (ASM #23005.67)	ASM AFFILIATES	, , 37-039240, 37-039241
SD-18861	NADB-R - 1138861	2020	MELING, JULIETTE	ARCHAEOLOGICAL SURVEY REPORT FOR THE TORREY PINES STATE NATURAL RESERVE	CALIFORNIA DEPARTMENT OF PARKS AND RECREATION	
SD-19312	NADB-R - 1139312; Other - RECON NUMBER 5230-2	2016	PRICE, HARRY J.	ARCHAEOLOGICAL RESOURCES REPORT FOR THE 10290 CAMPUS POINT DRIVE ADDITION OF THE CAMPUS POINT PROJECT, SAN DIEGO, CALIFORNIA	RECON ENVIRONMENTAL, INC.	
SD-19367	NADB-R - 1139367; Other - RECON NUMBER 9160	2021	ZEPEDA-HERMAN, CARMEN	RESULTS OF A CULTURAL RESOURCES SURVEY FOR THE SPECTRUM PEDESTRIAN BRIDGE PROJECT, SAN DIEGO, CALIFORNIA	RECON ENVIRONMENTAL, INC.	37-035124
SD-19431	NADB-R - 1139431	2021	ZAMUDIO-GURROLA, SUSAN and NICHOLAS HEARTH	CULTURAL RESOURCES IDENTIFICATION AND EVALUATION REPORT FOR THE AGORA PROJECT, 3911-4075 SORRENTO VALLEY BOULEVARD, CITY OF SAN DIEGO, SAN DIEGO COUNTY, CALIFORNIA	MICHAEL BAKER INTERNATIONAL	37-001064

Attachment E

Table of Previously Recorded Cultural
Resources within One Mile of the
Project Area

Resource List

Primary No.	Trinomial	Other IDs	Type	Age	Attribute codes	Recorded by	Reports
P-37-000197	CA-SDI-000197	Other - Cal E.4.49: Other - Bank Robber Site	Site	Prehistoric, Historic	AH04 (Privies/dumps/trash scatters); AP02 (Lithic scatter); AP15 (Habitation debris); AP16 (Other) - shell midden	1967 (Treganzal); 1995 (G. Timothy Gross, M. Robbins-Wade, J. Whitehouse, Affinis); 2005 (Drew Pallette, ASM Affiliates); 2011 (H. Price, Recon); 2015 (H. Price, Recon)	SD-00249, SD- 00511, SD-01010, SD-01369, SD- 01695, SD-01853, SD-02697, SD- 02699, SD-03523, SD-04293, SD- 04480, SD-04572, SD-04813, SD- 04900, SD-04911, SD-04914, SD- 05295, SD-05724, SD-05905, SD- 05945, SD-06192, SD-06385, SD- 06695, SD-07365, SD-13134, SD- 13135, SD-13280, SD-14066, SD- 17103
P-37-000198	CA-SDI-000198						SD-00182, SD- 04813, SD-06192, SD-09518
P-37-000199	CA-SDI-000199						SD-00182, SD- 00249, SD-04813, SD-06192, SD- 09518
P-37-000200	CA-SDI-000200						SD-00182, SD- 00249, SD-04813
P-37-000531	CA-SDI-000531	Other - W-316					SD-00511, SD- 01794, SD-02330, SD-02699, SD- 02733, SD-02770, SD-03305, SD- 04293, SD-04506, SD-04715, SD- 04911, SD-14065, SD-17103

Resource List

Primary No.	Trinomial	Other IDs	Type	Age	Attribute codes	Recorded by	Reports
P-37-001010	CA-SDI-001010						SD-00249, SD-00279, SD-00281, SD-00283, SD-00292, SD-00344, SD-00425, SD-00452, SD-00511, SD-00648, SD-00652, SD-00809, SD-04622, SD-04911, SD-05295, SD-05297, SD-08458, SD-11414, SD-13490, SD-14066, SD-14506
P-37-001064	CA-SDI-001064						SD-00249, SD-00279, SD-00281, SD-00283, SD-00292, SD-00344, SD-00425, SD-00452, SD-00652, SD-05297, SD-11977, SD-13490, SD-19431
P-37-004625	CA-SDI-004625						SD-00182, SD-04813, SD-06192, SD-09518, SD-14065, SD-17050
P-37-004627	CA-SDI-004627	Other - W-5024					SD-02699, SD-04480, SD-04911, SD-05189, SD-05190, SD-10755, SD-14065
P-37-004647	CA-SDI-004647						SD-00281, SD-00283, SD-00344, SD-00425, SD-00452, SD-00596, SD-00648, SD-00809, SD-02070, SD-02697, SD-04911, SD-14065, SD-14066
P-37-005218	CA-SDI-005218						SD-00773, SD-04330

Resource List

Primary No.	Trinomial	Other IDs	Type	Age	Attribute codes	Recorded by	Reports
P-37-005721	CA-SDI-005721						SD-00038 SD-00012, SD-00425, SD-01794, SD-02330, SD-03304, SD-04414, SD-04715, SD-11977, SD-13490, SD-13626
P-37-005826	CA-SDI-005826						SD-00182, SD-04753, SD-04813 SD-00182, SD-04753, SD-04813, SD-13503, SD-14065
P-37-007223	CA-SDI-007223						SD-00182, SD-04813, SD-09518 SD-01794, SD-03304, SD-04715, SD-08535, SD-11977, SD-13490, SD-14262
P-37-007224	CA-SDI-007224						SD-01794, SD-02733, SD-02770, SD-03304, SD-03305, SD-03768, SD-04506, SD-04715, SD-08535, SD-11977
P-37-007225	CA-SDI-007225						SD-00809, SD-01794, SD-02330, SD-02699, SD-02733, SD-03305, SD-03768, SD-04293, SD-04480, SD-04506, SD-04715, SD-04911, SD-08535, SD-14065
P-37-008116	CA-SDI-008116	Other - CE 291	Site	Prehistoric	AP02 (Lithic scatter); AP04 (Bedrock milling feature); AP16 (Other) - shell scatter	1979 (Fink, Rock, Price, Parkins, McCorkle)	
P-37-008117	CA-SDI-008117						
P-37-008121	CA-SDI-008121	Other - W-5025					

Resource List

Primary No.	Trinomial	Other IDs	Type	Age	Attribute codes	Recorded by	Reports
P-37-008122	CA-SDI-008122						SD-02330, SD-05189, SD-08535, SD-10755, SD-14065
P-37-008123	CA-SDI-008123						SD-01794, SD-02330, SD-04715, SD-08535
P-37-008211	CA-SDI-008211						
P-37-008212	CA-SDI-008212						
P-37-008213	CA-SDI-008213						
P-37-008214	CA-SDI-008214						SD-05147
P-37-008215	CA-SDI-008215						SD-08139
P-37-009594	CA-SDI-009594						SD-00182
P-37-009863	CA-SDI-009863						
P-37-010143	CA-SDI-010143	Other - W - 5026					SD-02699, SD-04293, SD-04480, SD-05945, SD-06695, SD-17103
P-37-010636	CA-SDI-010636						SD-00180, SD-00182, SD-04813, SD-09518
P-37-010637	CA-SDI-010637						SD-00180, SD-00182, SD-04813, SD-09518
P-37-010684	CA-SDI-010684						SD-02330, SD-04506, SD-05189, SD-05190, SD-10755
P-37-010685	CA-SDI-010685						SD-02330, SD-02733, SD-02770, SD-03305, SD-03768, SD-04506, SD-11977
P-37-010815	CA-SDI-010815						
P-37-011223	CA-SDI-011223						
P-37-011224	CA-SDI-011224						

Resource List

Primary No.	Trinomial	Other IDs	Type	Age	Attribute codes	Recorded by	Reports
P-37-011225	CA-SDI-011225						
P-37-011226	CA-SDI-011226						
P-37-011227	CA-SDI-011227						
P-37-013241	CA-SDI-013241	Other - W-1076					
P-37-015581	CA-SDI-014327	Other - PCC-2				(California Department of Parks & Recreation)	
P-37-015850	CA-SDI-014446					1997 (CA State Parks)	
P-37-015851	CA-SDI-014447					1997 (CA State Parks)	SD-09518, SD-11499
P-37-015860	CA-SDI-014455					1997 (CA State Parks)	SD-09518, SD-17050
P-37-017079	CA-SDI-015112	Other - The Torrey Pines Golf Course North, site Temp-1				1999 (Brian F. Smith & Associates)	SD-13503
P-37-017178		Other - Torrey Pines State Reserve Superintendent's Residence				1999 (Dep. Of Parks and Rec.)	SD-13503, SD-14066
P-37-024739	CA-SDI-016385	Other - CRM Tech 878-2H; Other - Burlington Northern Santa Fe (BNSF, formerly Atchinson, Topeka and Santa Fe) Railway; Other - SVDT-Railroad; Other - Atchinson, Topeka and Santa Fe Railway (AT&SF); Other - Santa Fe Surf Line; Other - San Diego Northern Railway	Structure, Site	Historic	AH07 (Roads/trails/railroad grades) - railroad grade; HP19 (Bridge) - railroad bridge; HP37 (Highway/trail) - railroad	2002 (Daniel Ballester, Teresa Woodard, CRM Tech); 2007 (Barry Stiefel, Shelby Gunderman, ASM Affiliates); 2010 (R. McLean, LSA Associates); 2011 (E. Schultz, K. Harper, Garcia & Associates); 2012; 2013 (Shelby Castells, Jennifer Krntz, ASM Affiliates); 2015 (Shelby Castells, ASM Affiliates); 2015 (Pamela Daly, M.S.H.P.); 2016 (Larry Tift, Joel Lennen, ASM Affiliates); 2017 (Michelle Courtney, Cogstone Resources Management); 2017 (Shannon Foglia, AECOM)	SD-14032, SD-17201, SD-17218, SD-17857, SD-18022, SD-18485, SD-18581, SD-18842
P-37-024764		Other - Purple by the Road				2002 (CA Dept. of Parks and Rec.)	
P-37-024767		Other - FAR-N FLAKE				2002 (CA Dept. of Parks and Rec.)	SD-17050
P-37-024768		Other - Purple by the Oysters				2002 (CA Dept. of Parks and Rec.)	

Resource List

Primary No.	Trinomial	Other IDs	Type	Age	Attribute codes	Recorded by	Reports
P-37-024772	CA-SDI-016406	Other - Shell Scatter Thingy				2002 (CA Dept. of Parks and Rec.)	SD-08497, SD-09518
P-37-024776	CA-SDI-016410	Other - Oooh, Quartzite				2002 (CA Dept. of Parks and Rec.)	SD-08497
P-37-024777	CA-SDI-016411	Other - Not Sure Site				2002 (CA Dept. of Parks and Rec.)	SD-08497, SD-09518
P-37-024778	CA-SDI-016412	Other - Not Just Another Isolate				2002 (CA Dept. of Parks and Rec.)	SD-08497, SD-09518
P-37-026489	CA-SDI-017385	Other - W-8 (MoM)				2005	SD-14065
P-37-026490	CA-SDI-017386	Other - W-16 (MoM)				2005	SD-13503, SD-14065
P-37-026495	CA-SDI-017391	Other - W-340 (MoM)				2005 (E. L. Davis)	
P-37-031095	CA-SDI-019721	Resource Name - PSB-S-1	Site	Prehistoric	AP11 (Hearths/pits) - hearths; AP16 (Other) - shell	2009 (Sarah Farmer, Jose "Pepe" Aguilar, Laguna Mountain Environmental, Inc.)	SD-16960
P-37-033597	CA-SDI-022051	Resource Name - Torrey Pines Golf Course-North Coast District; IC Informal - RNID-3189; Other - Torrey Pines Municipal Golf Course - North Course; Other - Torrey Pines Golf Course - North Course; Other - Torrey Pines North Golf Course	Building, Site, District	Prehistoric, Historic	AH02 (Foundations/structure pads); AH04 (Privies/dumps/trash scatters); AP02 (Lithic scatter); AP11 (Hearths/pits); AP15 (Habitation debris); AP16 (Other) - shell scatter/midden; HP04 (Ancillary building); HP29 (Landscape architecture); HP30 (Trees/vegetation)	2014 (Sarah Stringer-Bowsher, Shannon Davis, ASM Affiliates, Inc.); 2016 (Rebekah Loveless, Brandon Linton, Frank Dittmer, Juliette Meiling, Loveless Linton, Inc.); 2021 (Elizabeth Davidson, Dylan Howes, Gigi Dean, Jeffrey Linton, Loveless Linton, Inc.)	SD-15996
P-37-033784		Other - TP-ISO-01				2014 (Petra Resource Management)	
P-37-035124							SD-19367
P-37-035321							SD-14617
P-37-035638	CA-SDI-021812						
P-37-035662							
P-37-035665	CA-SDI-021813						
P-37-035666	CA-SDI-021814						
P-37-035677							

Resource List

Primary No.	Trinomial	Other IDs	Type	Age	Attribute codes	Recorded by	Reports
P-37-035679	CA-SDI-021818	IC Informal - RNID-3023					
P-37-035837	CA-SDI-021865	IC Informal - RNID-3023					
P-37-036068	CA-SDI-021943	Other - Flintkote 2: IC Informal - RNID-3081	Object, Site	Historic	AH06 (Water conveyance system) - Culvert/Troughs; AH11 (Walls/fences) - Fence Post	2016 (Christian Allen, N. Minovi, California Department of Parks and Recreation); 2020 (D. Mengers, B. Rolland, PangIS)	
P-37-036277	CA-SDI-021995	Other - CA-2; Concrete Marker; IC Informal - RNID-3125	Site	Historic	AH16 (Other) - Marker	2016 (B. Lucero, M. Mealey, A. DelRosario, G. Lucidi, C. Anderson, J. Collier; Christian Allen, State of California Department of Parks and Recreation Southern Suverice Center; San Diego Coast District)	
P-37-036278		Other - Metal & Mermaid Isolate; IC Informal - RNID-3125	Site	Historic	AH04 (Privies/dumps/trash scatters)	2016 (Mealey, M. Callahan, J. Turner, N. Allen, Department of Parks and Recreation); 2020 (D. Mengers, B. Rolland, PangIS)	
P-37-036414		Other - Del Mar-Z191291-1 (3444 Tripp Ct); IC Informal - RNID-3179	Building	Historic	HP06 (1-3 story commercial building)	2016 (Monica Mello, AECOM)	SD-17103
P-37-036415		Other - Del Mar-TL666(Portion of TL666 within the Del Mar Project corridor); Other - Del Mar Substation; IC Informal - RNID-3179	Structure	Historic	HP11 (Engineering structure)	2016 (Shannon E. Foglia, Brian Spelts, AECOM)	SD-17103
P-37-036417	CA-SDI-022047	Other - Del Mar-Z19127-1; IC Informal - RNID-3179	Site	Prehistoric	AP02 (Lithic scatter); AP16 (Other) - shell scatter	2016 (Shannon E. Foglia, Brian Spelts, AECOM)	SD-17103
P-37-036430		Other - Sorrento Valley/Industrial Park Historic District; IC Informal - RNID-3179	Building	Historic	HP08 (Industrial building)	2016 (Monica Mello, AECOM)	SD-17103
P-37-036624		IC Informal - RNID-3407; Other - Torrey Pines Park Road; Other - Roosevelt Memorial Drive/ Coast Highway/ US101	Structure	Historic	HP37 (Highway/trail) - highway/road	2017 (Marla Mealey, Erin Minnaugh, California Department of Parks and Recreation, Southern Service Center)	
P-37-038784		IC Informal - RNID-4356					
P-37-039810		IC Informal - RNID-5024					

Attachment F

Site Photographs

SITE PHOTOGRAPHS



Overview of APE, view to the northeast.



Overview of structure within APE, view to the southwest.



Overview of slope in the eastern half of APE; view to the northeast.



Overview of southern boundary of APE showing large cut in natural slope; view to the south.