

Parks and Recreation Department

**Jones Elementary School
Joint Use Facility
General Development Plan**

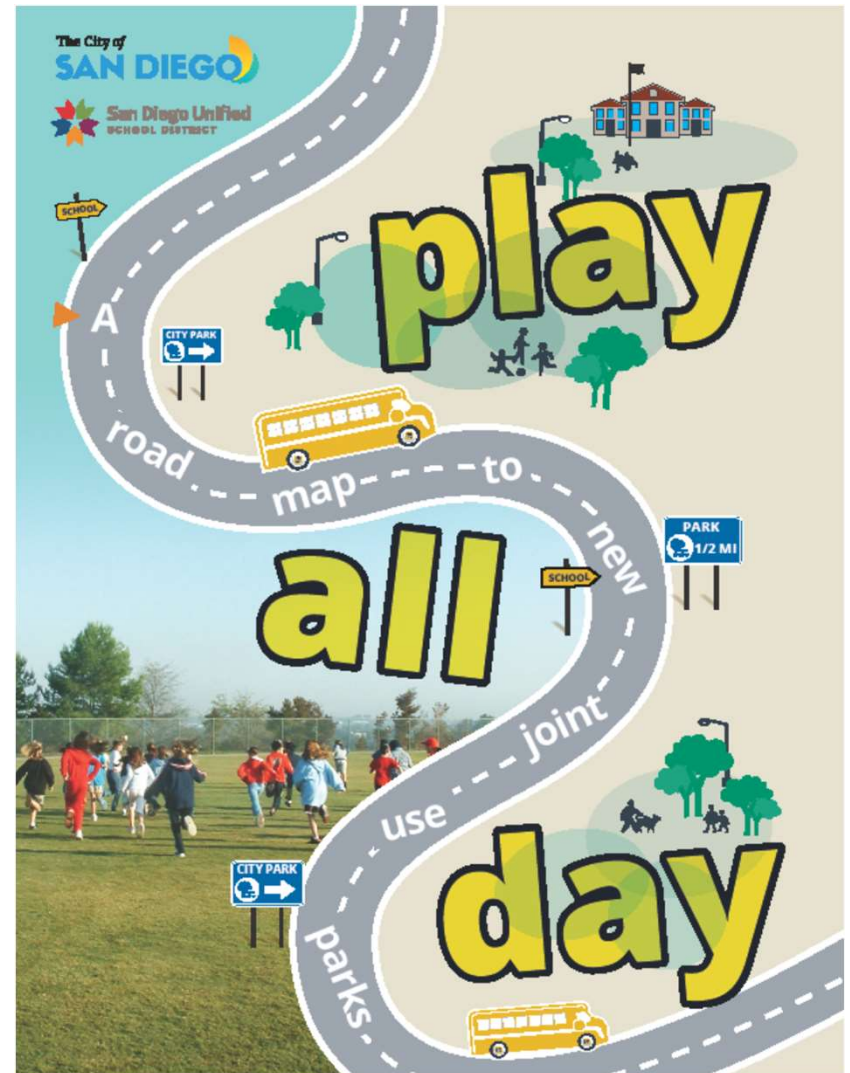
Parks and Recreation Board
November 21, 2024

Action Item 103

Introduction

Play All Day Parks Program

- Expansion of JU Program to add over **45** new joint use facilities in the next 5-10 years.
- To date, **27** Play All Day JU facilities have been opened to the public.
- **10** JUF's are in construction
- **3** JUF's are in design
- **3** JUF's are in public input



Joint Use Facilities Webpage



The screenshot shows the website's navigation menu with options: Parks & Recreation Home, General Information, Recreation Centers and Pools, Regional and Open Space Parks, Golf Courses, Programs and Services, and Virtual Center. The main content area is titled "Joint Use Facilities with School Districts" and includes a paragraph about the City's partnership with school and community college districts. It specifically mentions the San Diego Unified School District and provides a link to a "San Diego Unified School District Joint Use Facilities Tracking Sheet". Below the text is a "play all day" logo and a photograph of children playing in a park.

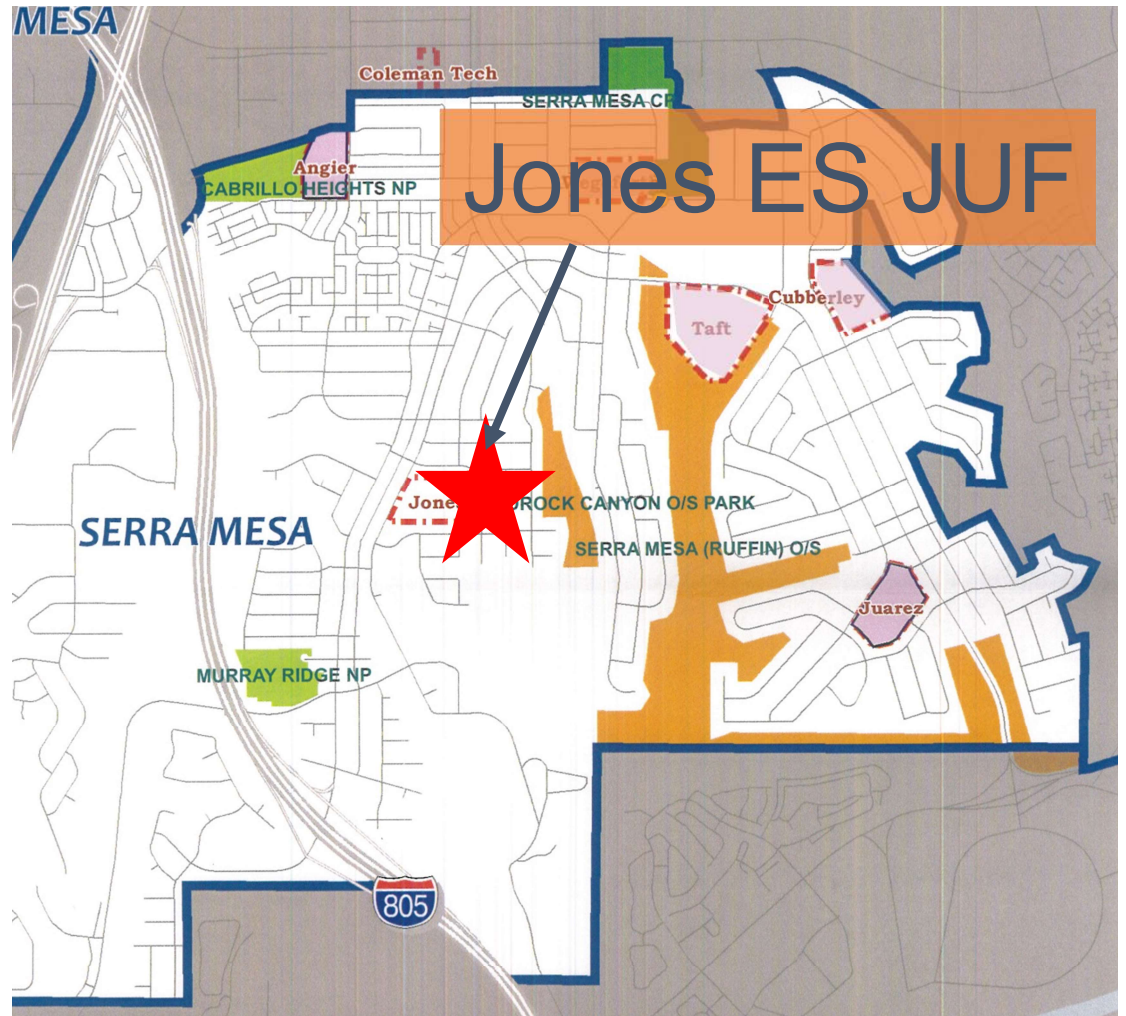
- Tracking sheet of existing and future joint use sites located within SDUSD
- Links to the SDUSD Construction Project Public Portal
- Updated joint use agreements
- General information and Frequently Asked Questions about the Play All Day Program

<https://www.sandiego.gov/park-and-recreation/parks/jointusefacilities>

Background

Jones Elementary School

- This project provides for the design and construction of a new joint use facility at Jones Elementary School.
- Located at 2751 Greyling Drive within the Serra Mesa Community, Council District 7.
- Will provide approximately 3.48 acres of population-based park land and 73 recreation value points.



Project Scope

- Design and construction of a multi-purpose natural grass field, walking track, parking lot, drinking fountain, fencing and trees.

Funding for Design and Construction:

- San Diego Unified School District through voter-approved capital improvement bond programs:
 - Propositions S & Z
 - Measures YY & U



Site Location, Aerial Map



Discussion

Community Concerns

- Shade Trees – to counter heat island effect from walking loop and parking lot
- Fence privacy screening - visual buffer between residences and the Joint Use Facility
- Drainage – design ensures water flow is directed away from adjacent residences

Community Planning Group (CPG) Recommendation

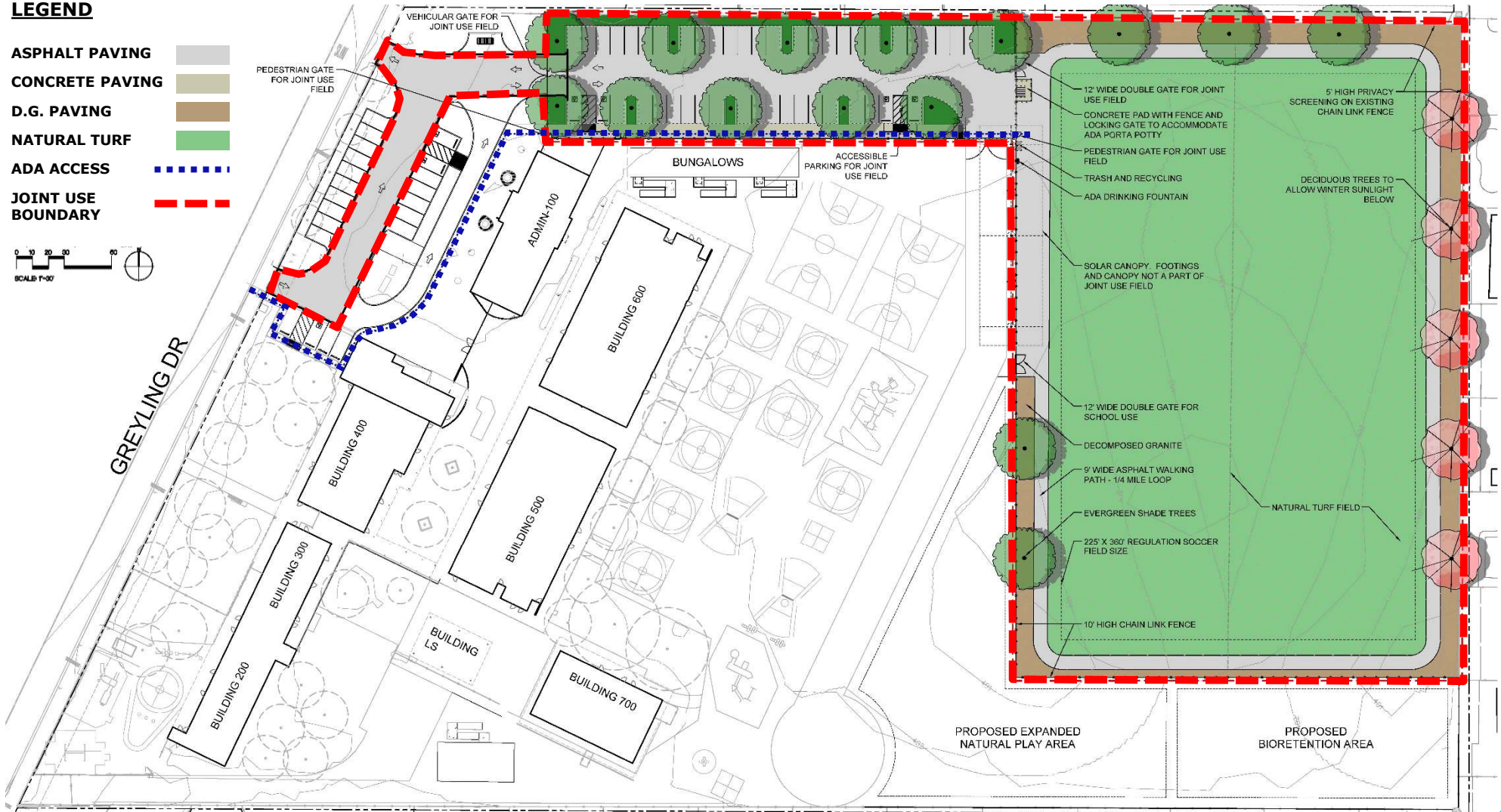
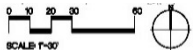
On August 15, 2024, the Serra Mesa Community Planning Group voted (6-0-0) to recommend approval of the General Development Plan for Jones Elementary School Joint Use Facility.



General Development Plan

LEGEND

- ASPHALT PAVING
- CONCRETE PAVING
- D.G. PAVING
- NATURAL TURF
- ADA ACCESS
- JOINT USE BOUNDARY





Recommendation

Recommend approval of the proposed General Development Plan (GDP) for the Jones Elementary School Joint Use Facility.