

# FOCUS AREA 9

COUNCIL DISTRICT 6

	<b>POPULATION</b>	<b>FOCUS AREA: 4,000</b> CITY OF SAN DIEGO: 1,386,300
	<b>MEDIAN HOUSEHOLD INCOME</b>	<b>FOCUS AREA: \$83,000</b> CITY OF SAN DIEGO: \$88,000
	<b>MEDIAN AGE</b>	<b>FOCUS AREA: 37</b> CITY OF SAN DIEGO: 36
	<b>PERCENTAGE OF WORKERS DRIVING ALONE</b>	<b>FOCUS AREA: 70%</b> CITY OF SAN DIEGO: 69%
	<b>PERCENTAGE OF HOUSEHOLDS WITH NO VEHICLE</b>	<b>FOCUS AREA: 6%</b> CITY OF SAN DIEGO: 6%

## OVERVIEW

Focus Area 9 covers a portion of the eastern end of Mira Mesa, adjacent to Interstate 15. In addition to I-15, the area's main roads are Mira Mesa Boulevard and Black Mountain Road. Heavy automobile traffic is common along Mira Mesa Boulevard due to large shopping centers. The area features a mix of housing types, including single-family homes, mobile/manufactured homes, and mid-rise apartments. This higher residential density creates opportunities to improve walking and biking access and connectivity, especially for short trips to visit neighbors, go to school, to shop, or to get to a transit station.

San Diego Miramar College is in the southern part of Focus Area 9. The college has an approximate total enrollment of 14,000 students. While the campus is currently served by bus routes, it could benefit from improved access to transit, a more robust mobility hub, and additional pedestrian infrastructure.

## COMMUNITY VOICES

"The city needs more active transportation like bus lanes, dedicated protected cycle lanes, and trams. We need fewer cars on our roads."

"I'd like bike lanes to have reflectors placed on the outer lines. Cars drive over them so frequently that they wear out fast, and drivers don't see them anymore."

"I do have my doubts as to where you will improve public transportation because there are some areas without complete access to public transportation and I do hope that changes."

## MOBILITY PROGRAMS OF INTEREST

The community expressed interest in the following mobility programs:

- Urban connectivity
- Micromobility charging and services
- Curbside management
- Slow Streets
- Community parking district

## PLANNED PROJECTS

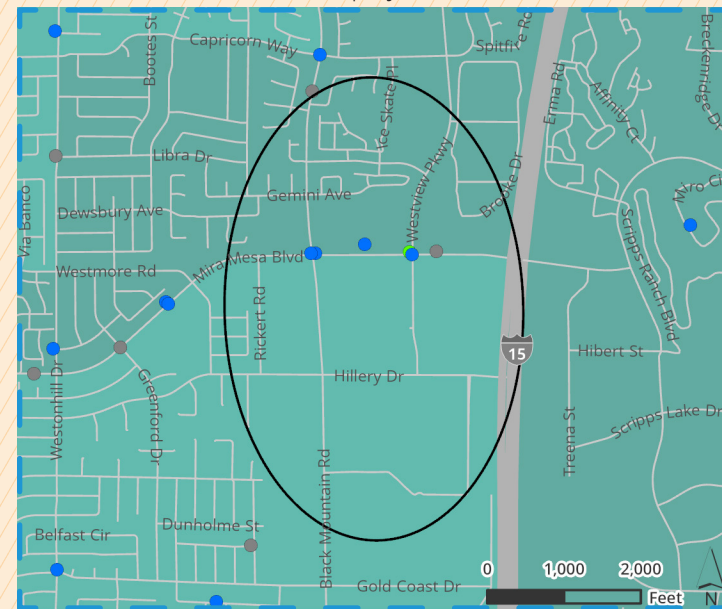
The table and figure to the right detail the top 10 City mobility projects for Focus Area 9. The full list of mobility projects for all Focus Areas can be found in Appendix B.

## OPPORTUNITIES FOR FUTURE STUDY

Focus Area 9 opportunities for future study include but are not limited to:

- » Charging infrastructure for vehicles and micromobility devices
- » Safety and active transportation enhancements throughout the Mira Mesa Blvd corridor
- » Transit priority treatment on key corridors, including Mira Mesa Blvd and Westview Pkwy

FIGURE 6-26: FA9 Climate Equity Index and Collisions



\*Severe or Fatal Collision by Mode Type: ● Pedestrian ● Bicycle ● Vehicle  
\*\* For full Legend details see Figure 6-7.

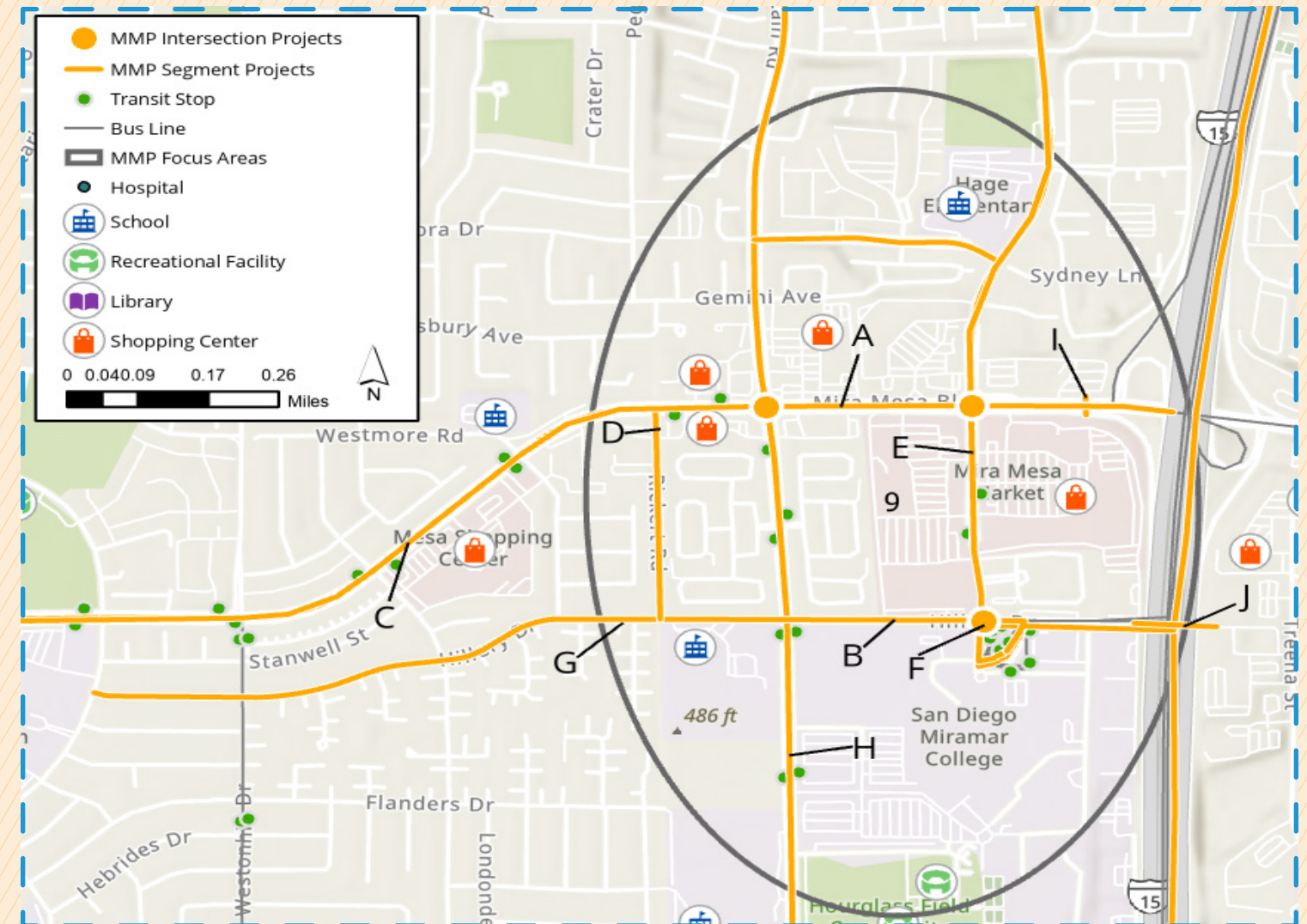


FIGURE 6-27: FA9 Planned Projects Map

TABLE 6-9: FA9 Planned Projects

City Projects	Description	Mode
A	Install a flex lane (one in each direction) along Mira Mesa Blvd from the I-805 to I-15 freeway interchanges. Flex lanes could be used for transit or high-occupancy vehicles.	Transit, Vehicular
B	Implement urban pathway (off-street) along Hillery Dr from Rickert Rd to Westview Pkwy.	Walking
C	Implement along Mira Mesa Blvd between New Salem St and I-15, a shared use path on one side, and a one-way cycle track on the other side.	Walking, Cycling
D	Implement a bicycle trail/multi-use path along Rickert Rd from Hillery Dr to Mira Mesa Blvd.	Cycling
E	Implement one-way cycle tracks along Westview Pkwy between Black Mountain Rd and Galvin Ave and two-way cycle tracks on Westview Pkwy between Galvin Ave and Hillery Dr.	Cycling
F	Develop a mobility hub at the Miramar College Transit Station.	Transit
G	Install a bikeway along Hillery Dr from Reagan Rd to Black Mountain Rd.	Cycling
H	Install one-way cycle tracks along Black Mountain Rd between Miramar Rd and Mercy Rd, with the exception of a NB bicycle lane at Kearny Villa Rd and Hillery Dr.	Cycling
I	Construct a pedestrian/bicycle bridge over Mira Mesa Blvd and located east of the intersection Mira Mesa Blvd and Westview Pkwy.	Walking, Cycling
J	Construct a pedestrian/bicycle bridge near Hillery Dr that goes across the I-15 Fwy and connects the Mira Mesa and Scripps Miramar Ranch communities.	Walking, Cycling