

# FOCUS AREA 11

COUNCIL DISTRICT 5

	<b>POPULATION</b>	<b>FOCUS AREA: 25,000</b> CITY OF SAN DIEGO: 1,386,300
	<b>MEDIAN HOUSEHOLD INCOME</b>	<b>FOCUS AREA: \$105,000</b> CITY OF SAN DIEGO: \$88,000
	<b>MEDIAN AGE</b>	<b>FOCUS AREA: 37</b> CITY OF SAN DIEGO: 36
	<b>PERCENTAGE OF WORKERS DRIVING ALONE</b>	<b>FOCUS AREA: 70%</b> CITY OF SAN DIEGO: 69%
	<b>PERCENTAGE OF HOUSEHOLDS WITH NO VEHICLE</b>	<b>FOCUS AREA: 5%</b> CITY OF SAN DIEGO: 6%

## OVERVIEW

Focus Area 11 covers the area adjacent to Interstate 15 along a 5-mile stretch from State Route 56 to Duenda Road, just north of Rancho Bernardo Road. This area features a mix of residential neighborhoods, offices, business parks, shopping centers, and hotels. Schools within the focus area include Los Peñasquitos Elementary School, Turtleback Elementary School, and the Rancho Bernardo Education Center of Palomar College. Bus routes serve the area, providing connections to Downtown. The Rancho Bernardo and Sabre Springs Transit Stations cater primarily to park-and-ride users.

This focus area is suburban in nature and auto dominated, with only 5% of households with no vehicles. Upgrading transit services and providing other viable mobility options could encourage more residents and workers to rely less on driving. Additionally, explore opportunities to repurpose underutilized public right-of-way into active transportation facilities.

## COMMUNITY VOICES

*"Recently looking into e-bike for work commute, but have concerns about safety."*

*"Local transit to connect residents to major bus routes at the Rancho Bernardo Transit Center."*

*"Better crossing treatments, especially along roadways with higher speeds."*

## MOBILITY PROGRAMS OF INTEREST

The community expressed interest in the following mobility programs:

- On-demand specialized transportation
- Neighborhood shuttle
- Transit fare subsidies
- E-bike rebate
- Urban connectivity

## PLANNED PROJECTS

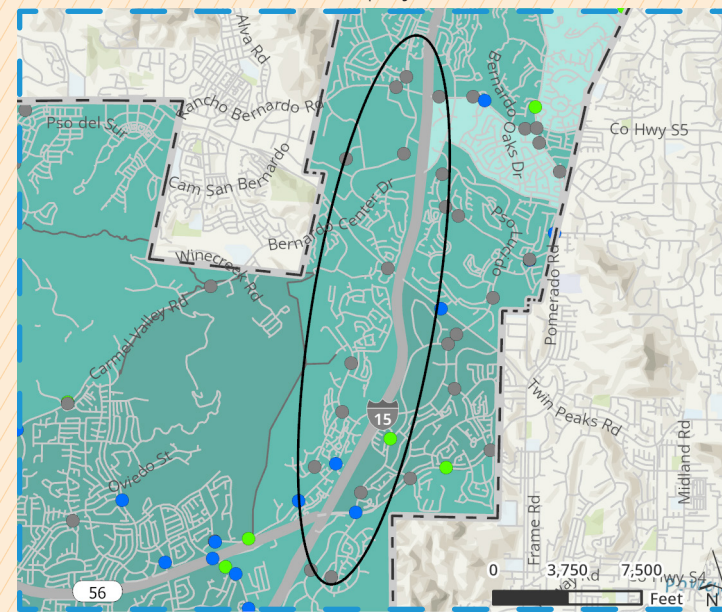
The table and figure to the right detail the top 10 City mobility projects for Focus Area 11. The full list of mobility projects for all Focus Areas can be found in Appendix B.

## OPPORTUNITIES FOR FUTURE STUDY

Focus Area 11 opportunities for future study include but are not limited to:

- » Microtransit or circulator services
- » Charging infrastructure for vehicles and micromobility devices
- » Expansion of mobility options for all ages and abilities

FIGURE 6-30: FA11 Climate Equity Index and Collisions



\*Severe or Fatal Collision by Mode Type: ● Pedestrian ● Bicycle ● Vehicle  
\*\* For full Legend details see Figure 6-7.

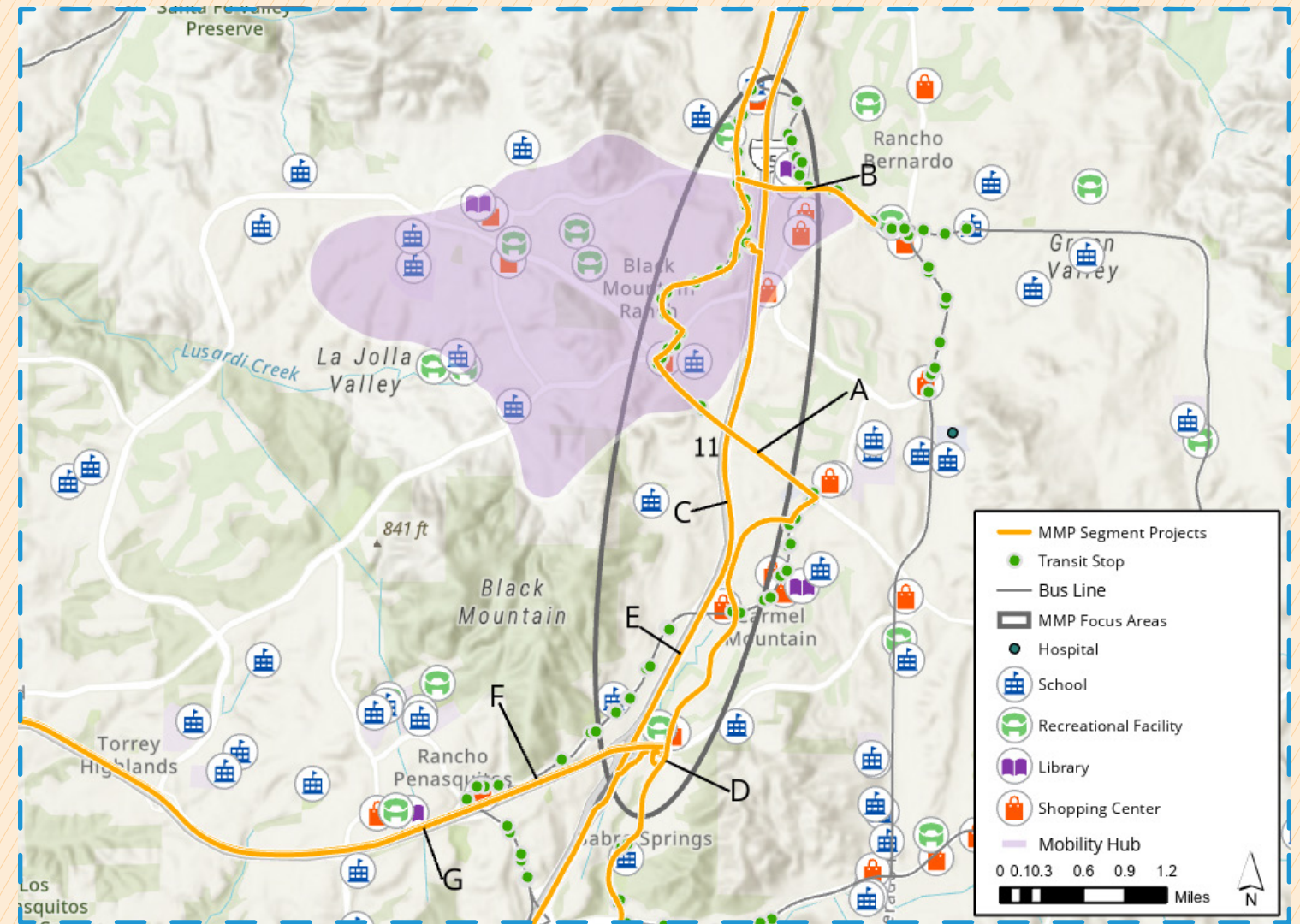


FIGURE 6-31: FA11 Planned Projects Map

TABLE 6-11: FA11 Planned Projects

Projects	Description	Mode
A	I-15 Bikeway (off-street) from Poway Rd Interchange to Carmel Mountain Rd	Cycling
B	Bike lanes along Rancho Bernardo Rd from W Bernardo Dr to Acena Dr	Cycling
C	Transit Leap Rapid 235 - Escondido to Downtown San Diego via I-15 (DAR stations)	Transit
D	Transit Leap Rapid 238 - UC San Diego to Rancho Bernardo via Sorrento Valley and Carroll Canyon	Transit
E	Transit Leap Rapid 237 - UC San Diego to Rancho Bernardo via Sorrento Valley and Mira Mesa	Transit
F	Transit Leap Rapid 103 - Solana Beach to Sabre Springs via Del Mar Heights and SR-56	Transit
G	Transit Leap Rapid 104 - Sorrento Valley to Sabre Springs via SR 56	Transit
H	West Bernardo Mobility Hub would offer access to multiple transportation options, such as Rapid bus, microtransit, and shared mobility	Walking, Cycling, Transit, Vehicular