

16-20 DECEMBER

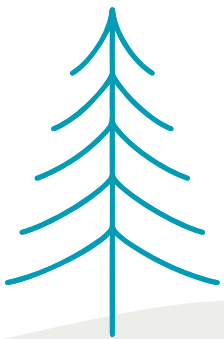
6401 SKYLINE DR, SAN DIEGO, 92114

MLK RECREATION

CENTER

**WINTER
CAMP**

**AGE
6-12
YEARS**



ACTIVITY CODE: 118854

COST: \$50

SDRECCONNECT.COM



**DAILY DROP OFF BEGINS AT 8AM AND PICKUP ENDS
AT 4PM. EXTENDED CARE IS AVAILABLE 4-5PM- USE
CODE 118855! EXTENDED CARE COST IS \$20**

REGISTRATION OPENS NOVEMBER 16 @ 10AM

AS A RECIPIENT OF FEDERAL FUNDS, THE CITY OF SAN DIEGO CANNOT DISCRIMINATE AGAINST ANYONE ON THE BASIS OF RACE, COLOR, CREED, SEX, AGE, NATIONAL ORIGIN OR ANCESTRY, RELIGION, PREGNANCY, PHYSICAL OR MENTAL DISABILITY, VETERAN STATUS, MARITAL STATUS, MEDICAL CONDITION, GENDER (TRANSEXUAL AND TRANSGENDER), SEXUAL ORIENTATION, AS WELL AS ANY OTHER CATEGORY PROTECTED BY FEDERAL, STATE OR LOCAL LAWS. IF ANYONE BELIEVES HE OR SHE HAS BEEN DISCRIMINATED AGAINST, HE OR SHE MAY FILE A COMPLAINT ALLEGING THE DISCRIMINATION WITH EITHER THE CITY OF SAN DIEGO PARK AND RECREATION DEPARTMENT (CONTACT DISTRICT MANAGER CARLOS RIOS OR THE OFFICE OF EQUAL OPPORTUNITY, U. S. DEPARTMENT OF THE INTERIOR, WASHINGTON, D.C. 20240. THIS INFORMATION IS AVAILABLE IN ALTERNATIVE FORMATS UPON REQUEST. PRINTED ON RECYCLED PAPER.