

HIDDEN TRAILS NEIGHBORHOOD PARK  
PUBLIC ART  
**ARTWORK PROPOSAL**  
By Trevor Amery



Commission for  
Arts and Culture

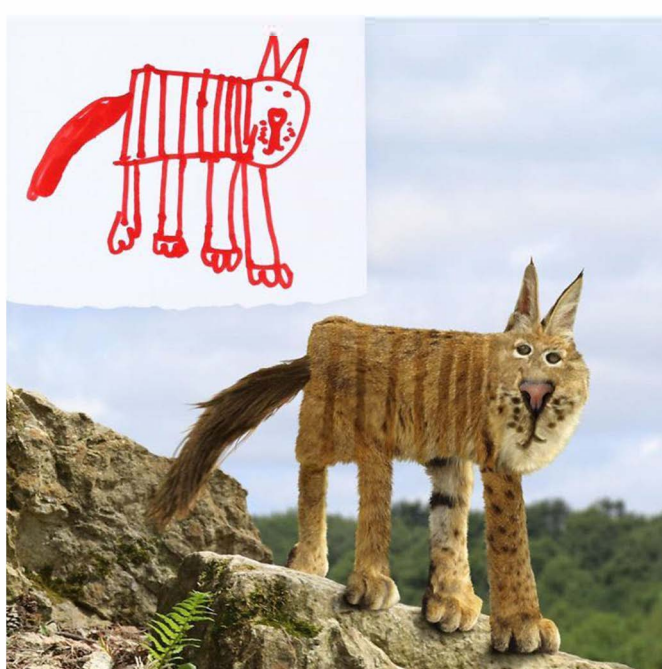
Artist Trevor Amery has been developing an artwork proposal for Hidden Trails Neighborhood Park. For his artwork, he is making a series of four sculptural activations and a community engagement project. He hopes the community can connect with and take ownership of these artworks and feel that they are their own. Since this park is some ways is the community's "backyard," Trevor did not want to create one massive artwork that overpowers the space and the aesthetics of the park. Instead, he has created activations that will expand the experience of the park as well as nature in the area. Amery wants the community to feel that this is their space; a space to be explored that can reveal treasures and hopefully inspire wonderment along the journey.



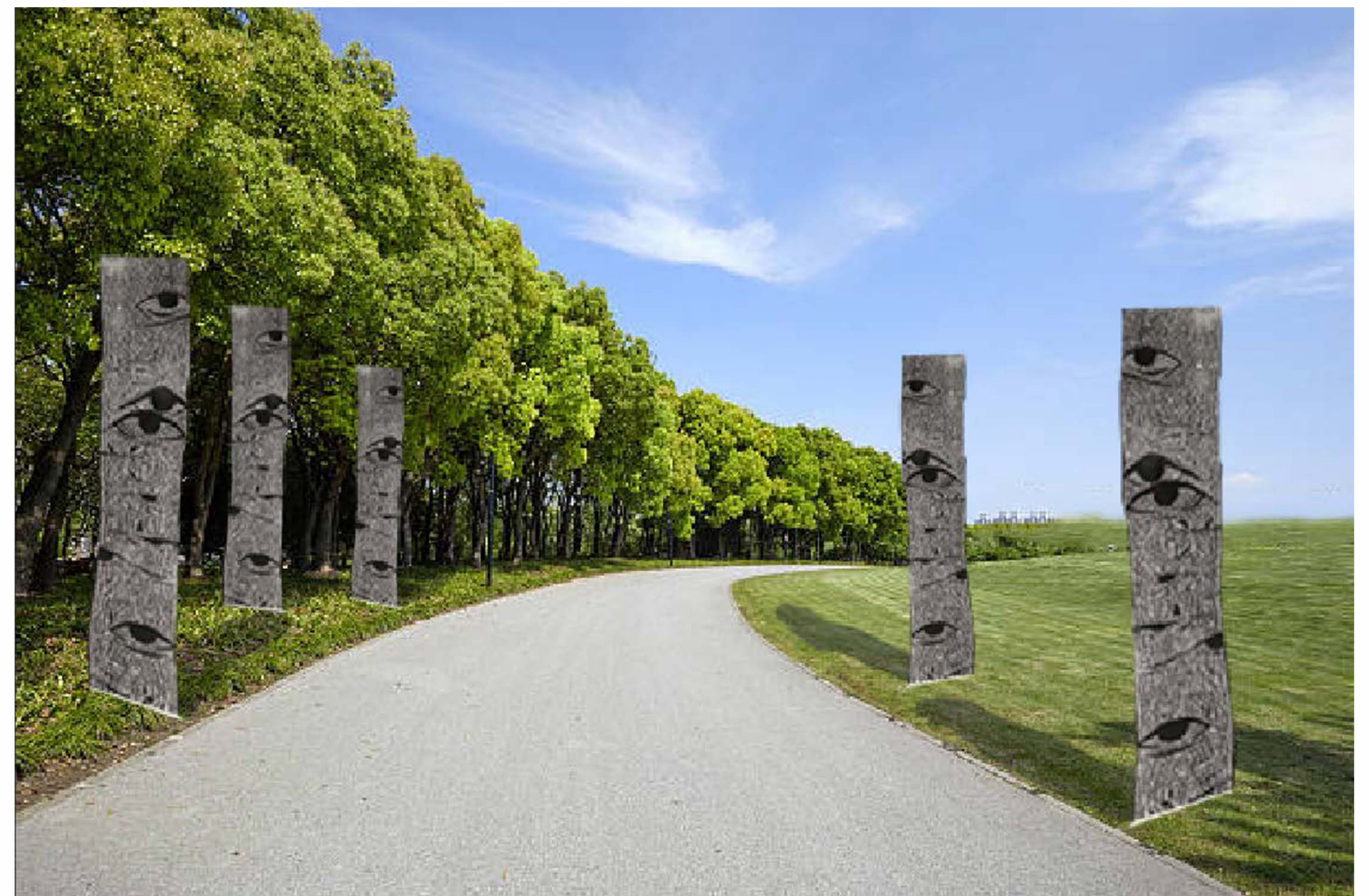
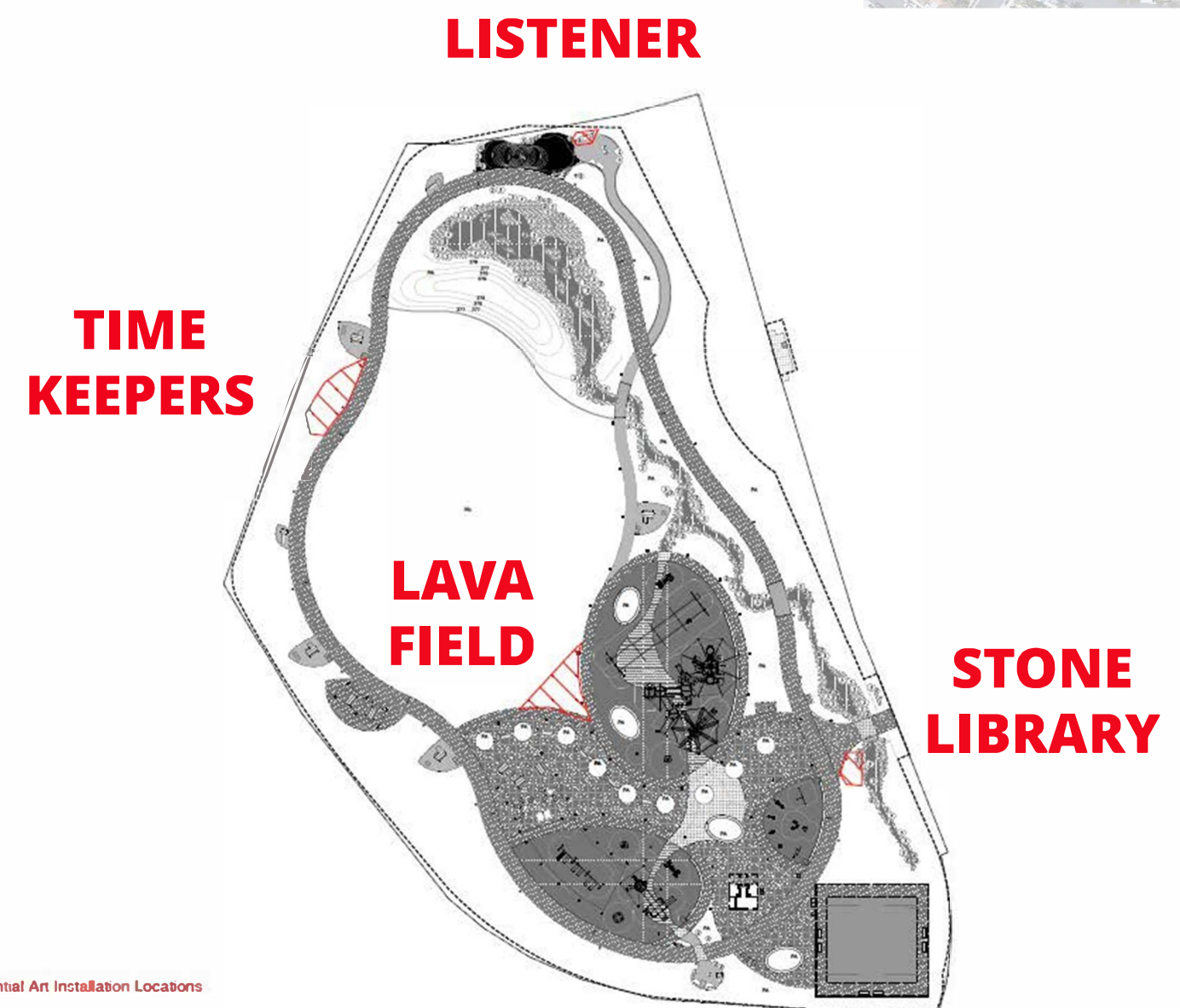
**LAVA FIELD:** This activation is comprised of a series of stones and shapes of acrylic of different sizes and colors for participants to jump between, avoiding the ground. It is inspired by the kid's game called 'lava', where children jump between rocks or furniture avoiding the ground or floor pretending it is lava.



**LISTENER:** This boulder is here for you. Here to listen, keep you company, and just hang out. It will lend a sympathetic ear or a strong shoulder to lean on. The bench is situated at a lookout in the park, a place for people to gather or to take some time alone. The sculpture resembles the form of a person sitting on a bench. It's limited components open the piece up to a wide range of interpretations.



**ANIMAL DRAWING CONTEST:** I will hold a drawing contest for the neighborhood children, inviting them to submit drawings of their favorite local animals. The selected drawings will be converted into digital files and installed on sculpture, buildings, and areas around the park.



**TIME KEEPERS:** These tree trunks will be free standing sculpture lining a path for viewers to walk by. Trees capture climate history in their tree rings and often exist on a timeline much longer than our own. Some trees even drop their lower branches when growing, leaving knots that resemble eyes on the trunk. The trees are witnesses and time keepers, watching and documenting the world, season by season.



**STONE LIBRARY:** This activation is inspired by free neighborhood libraries, but is a place for participants to place stones or objects they have found they like for others to take or enjoy. It will become a place for people to visit on their way in or out of the park. The niches carved in the boulder will create little spaces for precious objects. They will be there for participants to leave stones they may have found or possibly even lost objects found in the park. It is a meeting place and a sharing stone.

Artist rendering of the artwork.