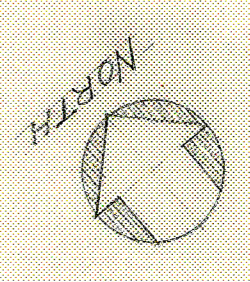
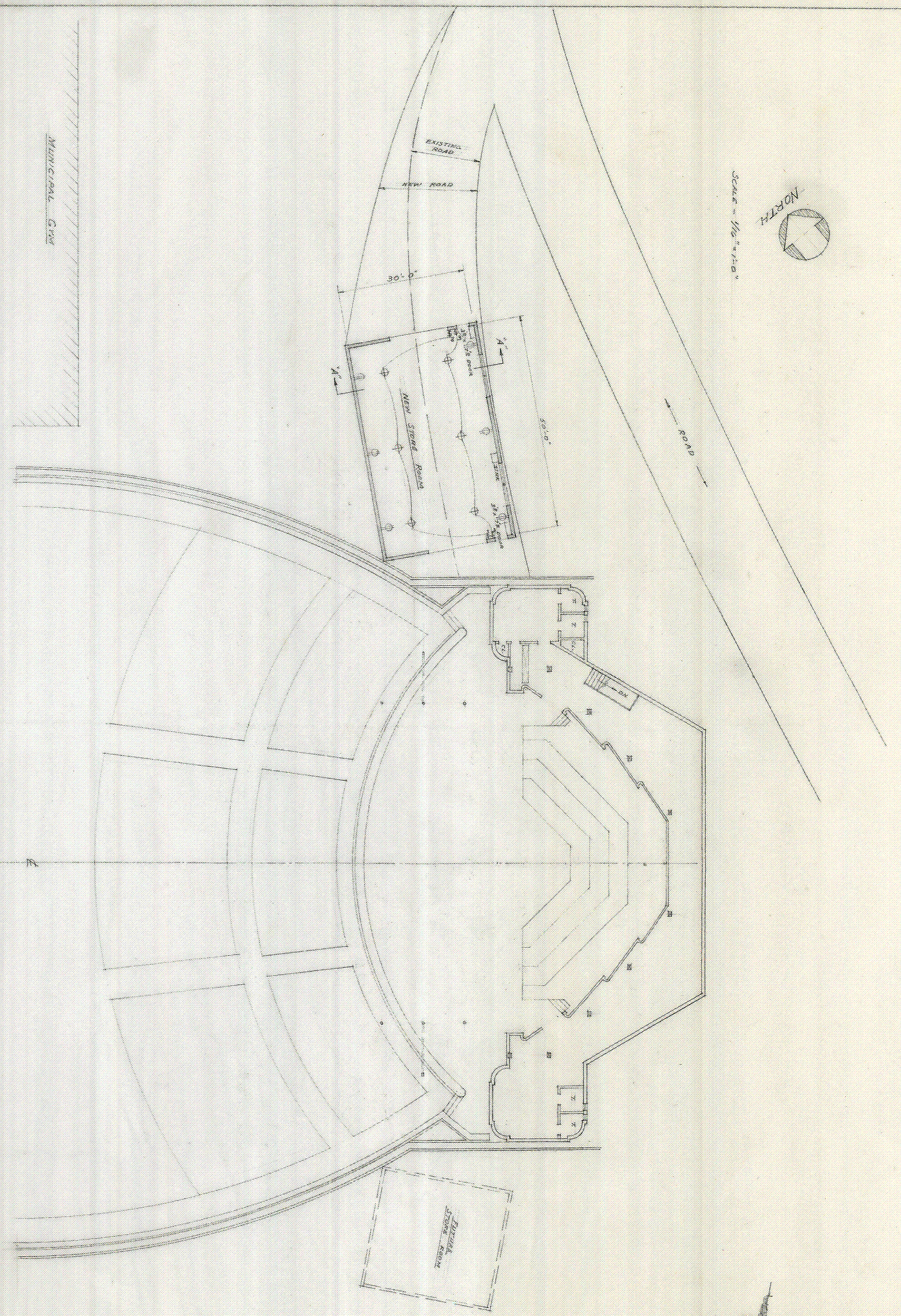


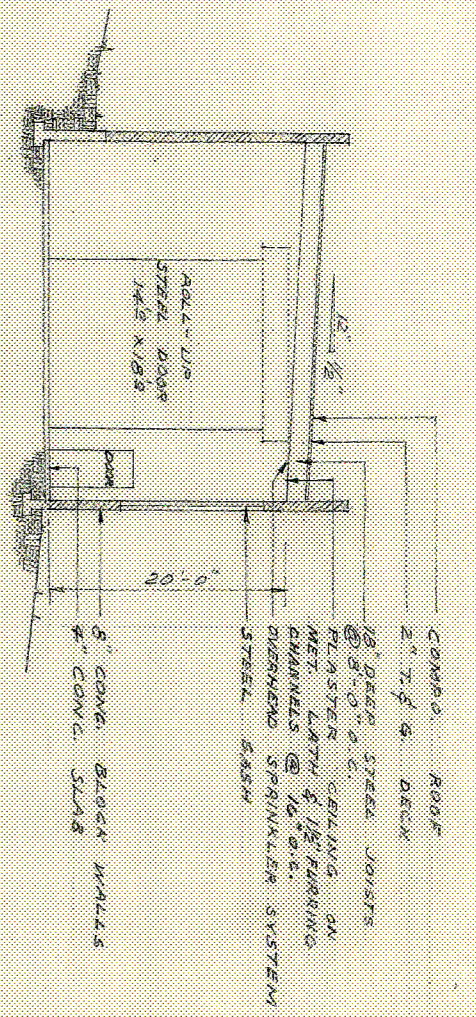
Approved
 1/3/1938
 10/11
 12th November 1938



Scale - 1/16" = 1'-0"



PARTIAL SITE PLAN
 Scale - 1/16" = 1'-0"



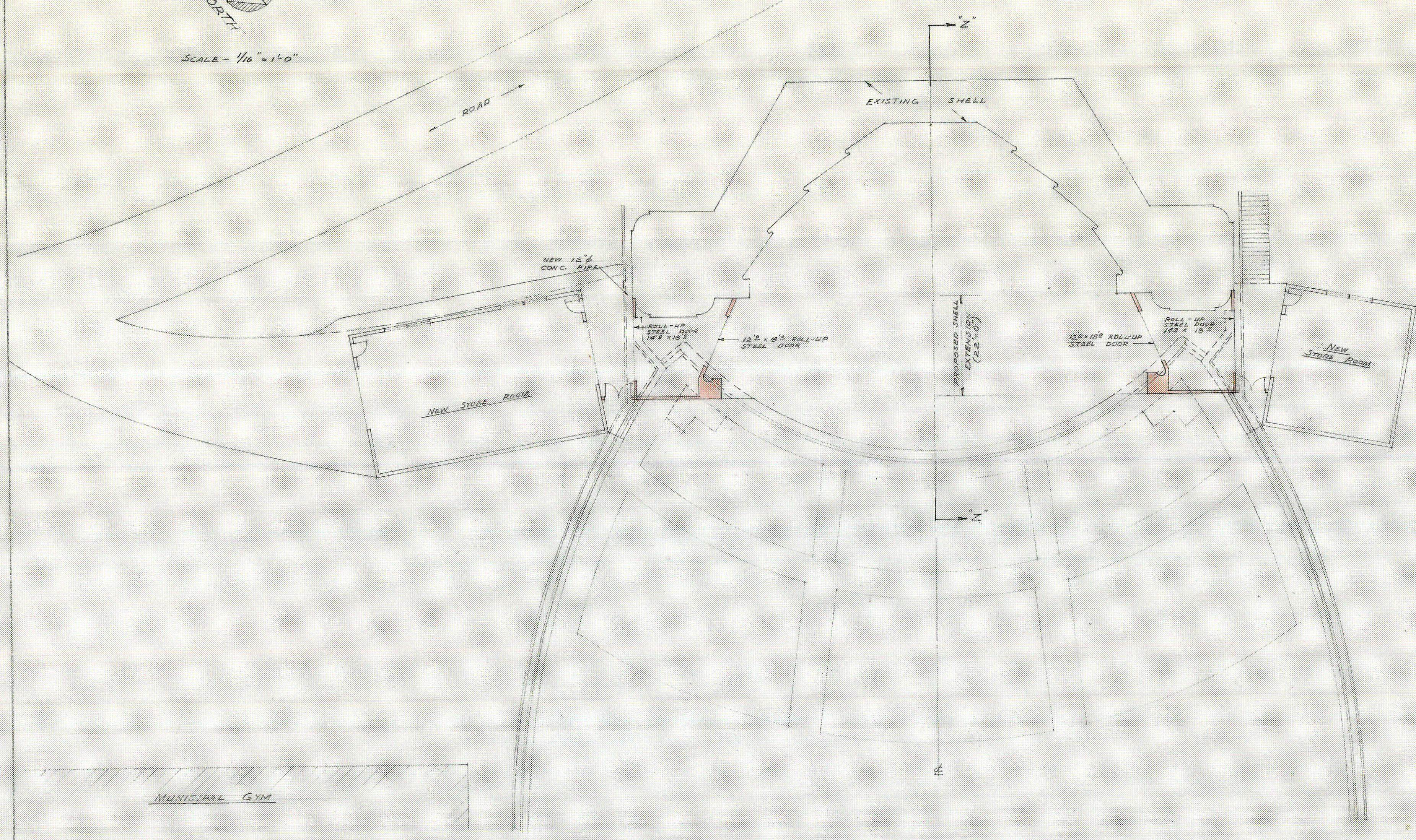
SECTION A-A
 Scale - 1/16" = 1'-0"

San Diego History Center

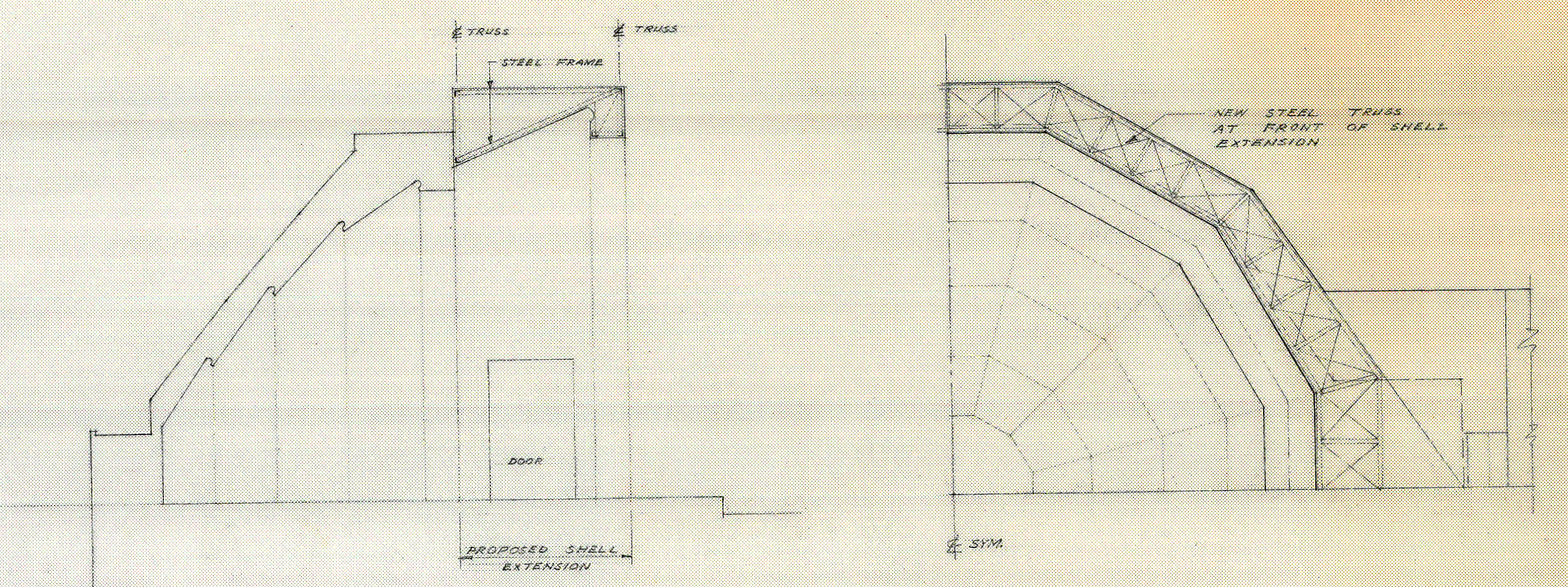
PROPOSED NEW STORE ROOM
 ALTERATIONS & ADDITIONS
 FOR
 FORD BOWL

APPROVED	ARCHITECT	SAN DIEGO, CALIFORNIA
<i>Samuel H. Hamill</i>	SAM W. HAMILL, ARCHITECT	SAN DIEGO, CALIFORNIA
DATE	DATE	DATE
5/25/38	5/25/38	5/25/38
REVISED	REVISED	REVISED
5/25/38	5/25/38	5/25/38

NORTH
SCALE - 1/16" = 1'-0"

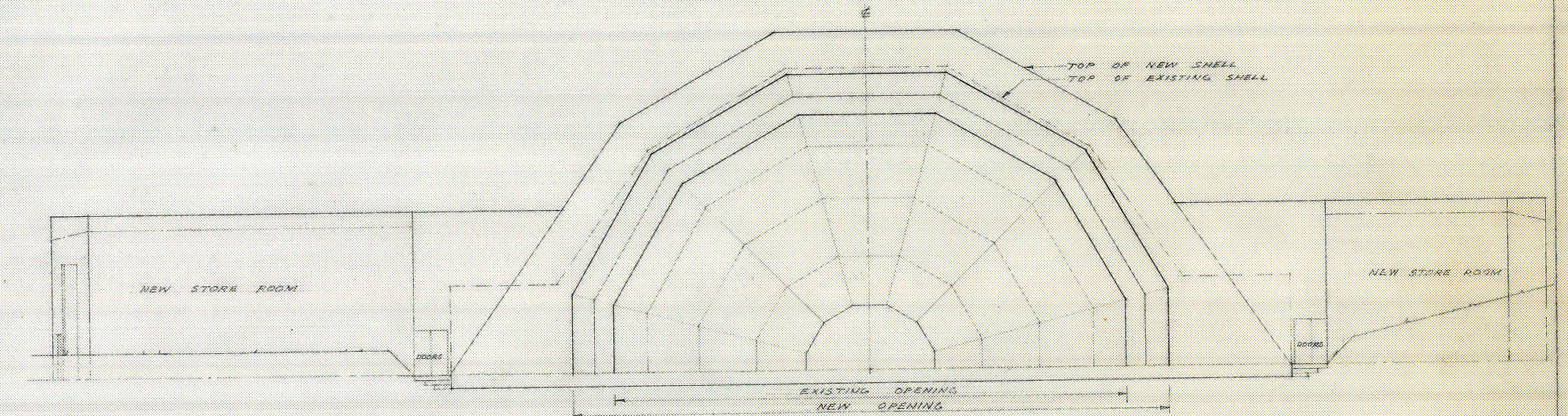


PARTIAL SITE PLAN
SCALE - 1/16" = 1'-0"



SECTION "Z-Z"
SCALE - 1/16" = 1'-0"

HALF FRONT ELEVATION
SCALE - 1/16" = 1'-0"



FRONT ELEVATION
SCALE - 1/16" = 1'-0"

San Diego History Center

PROPOSED SHELL EXTENSION	
APPROVED	ALTERATIONS & ADDITIONS FOR FORD BOWL
SAN DIEGO, CALIFORNIA DATE 5/25/49 DRAWN BY R. L. & ARCHITECT	SAM W. HAMILL A.I.A. ARCHITECT SAN DIEGO, CALIFORNIA
	2