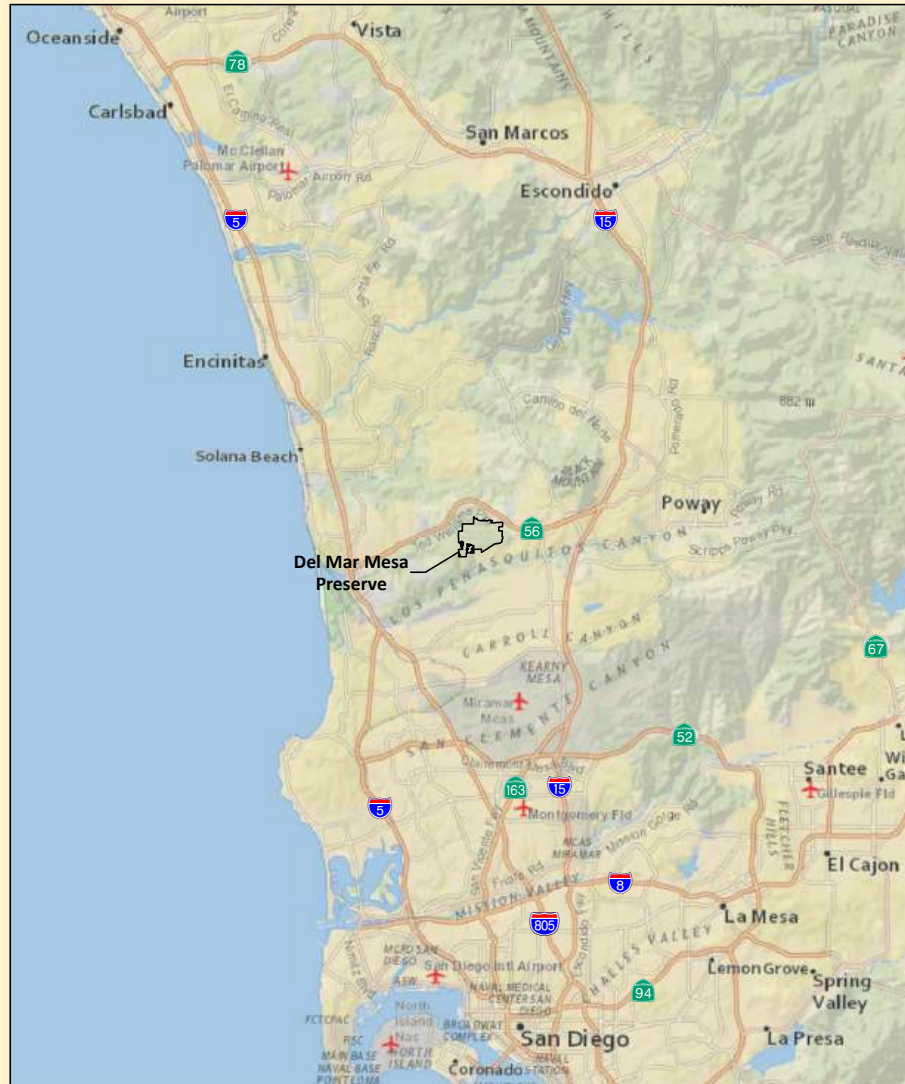









Habitat Restoration on the Del Mar Mesa Preserve





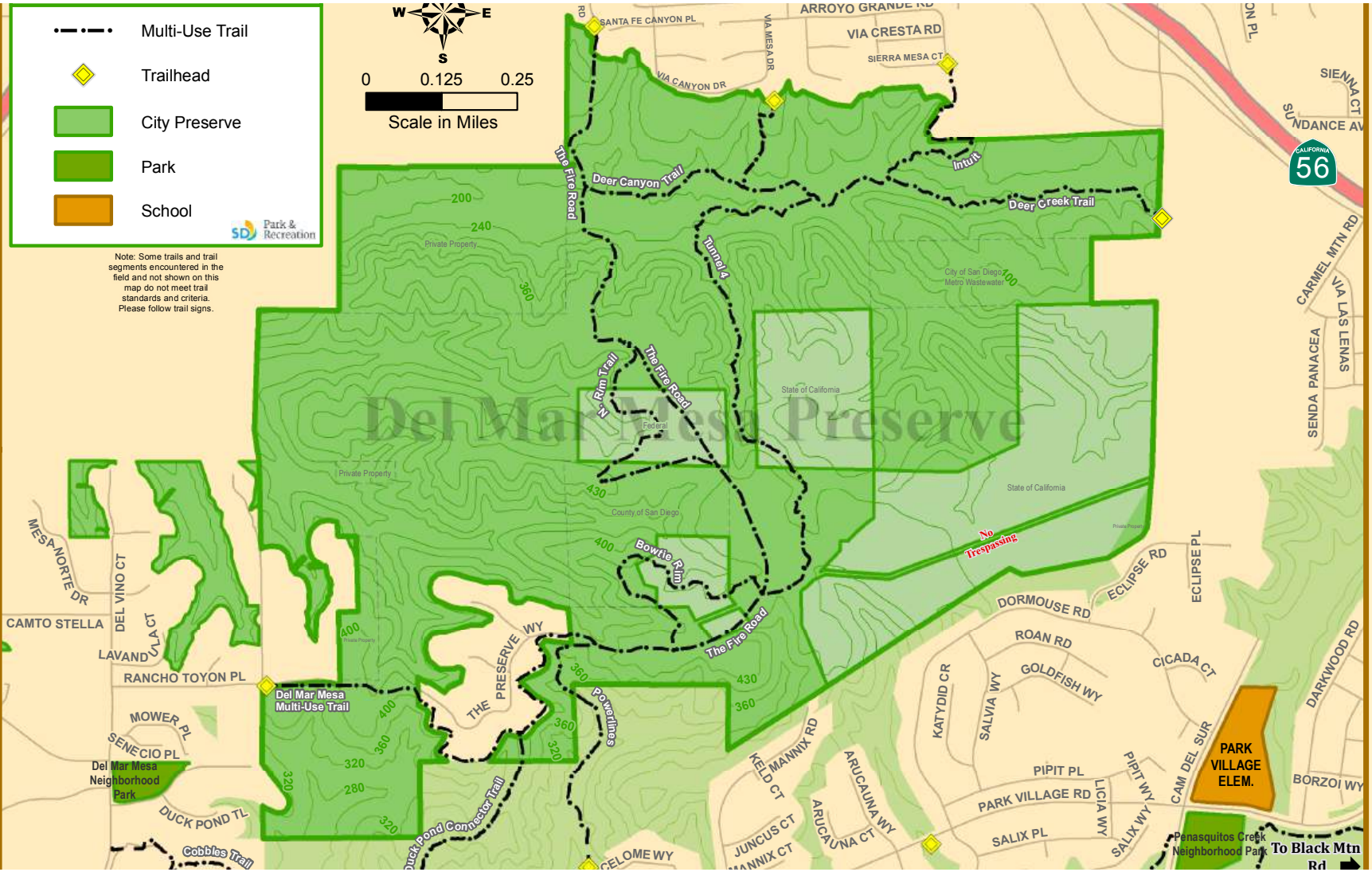
-  Multi-Use Trail
-  Trailhead
-  City Preserve
-  Park
-  School

 SD Park & Recreation

W  E
S

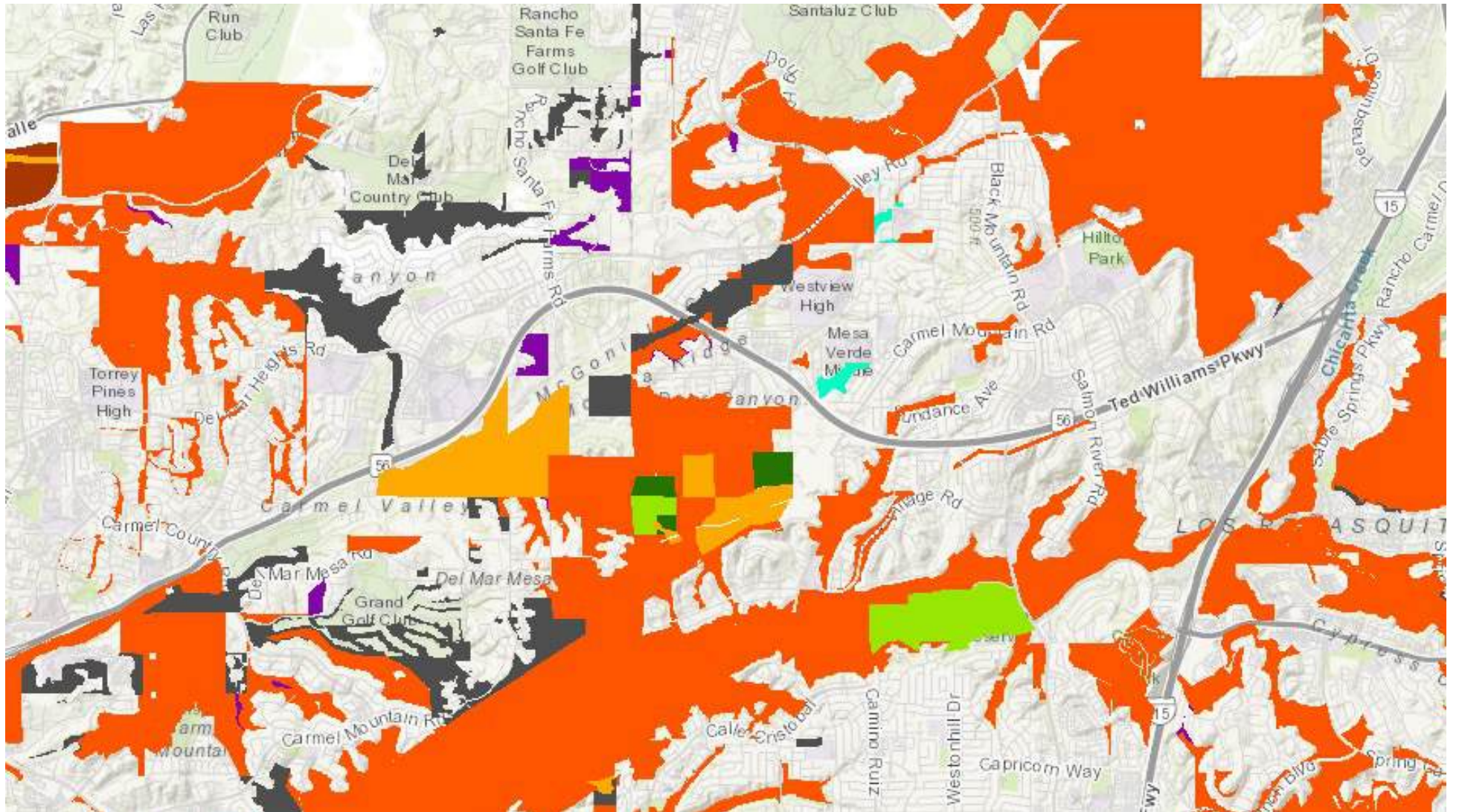
0 0.125 0.25
Scale in Miles

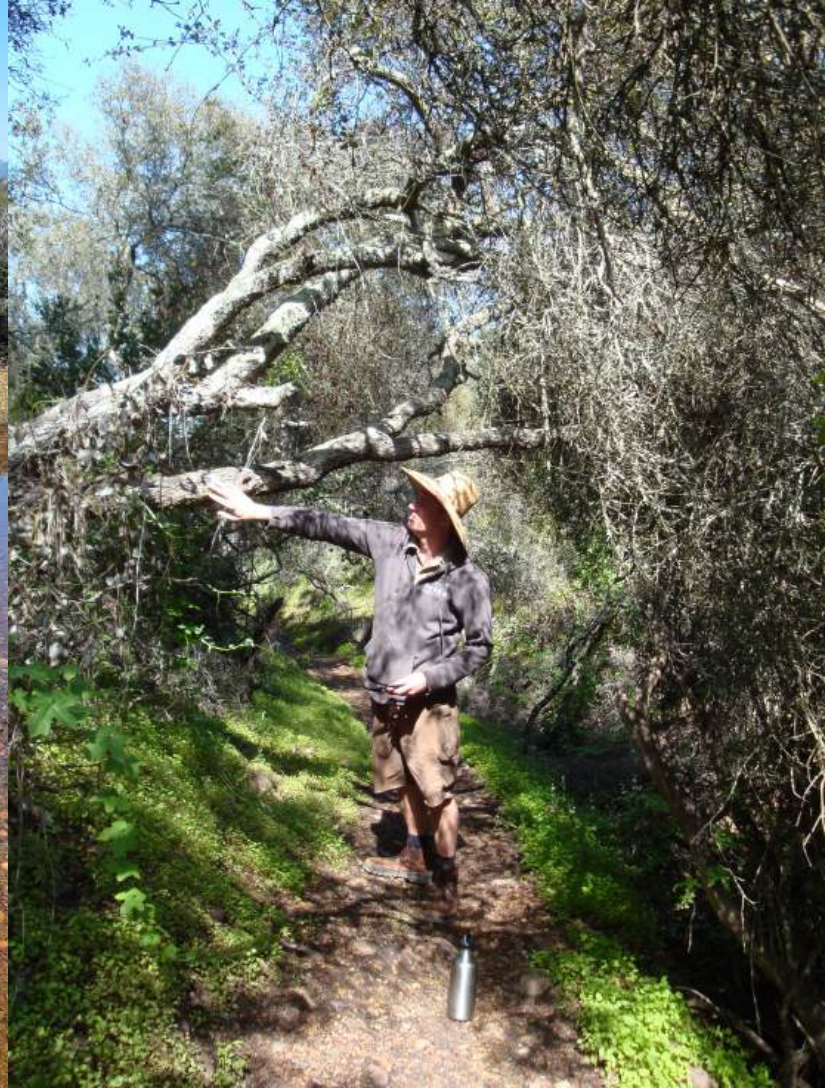
Note: Some trails and trail segments encountered in the field do not meet trail standards and criteria. Please follow trail signs.



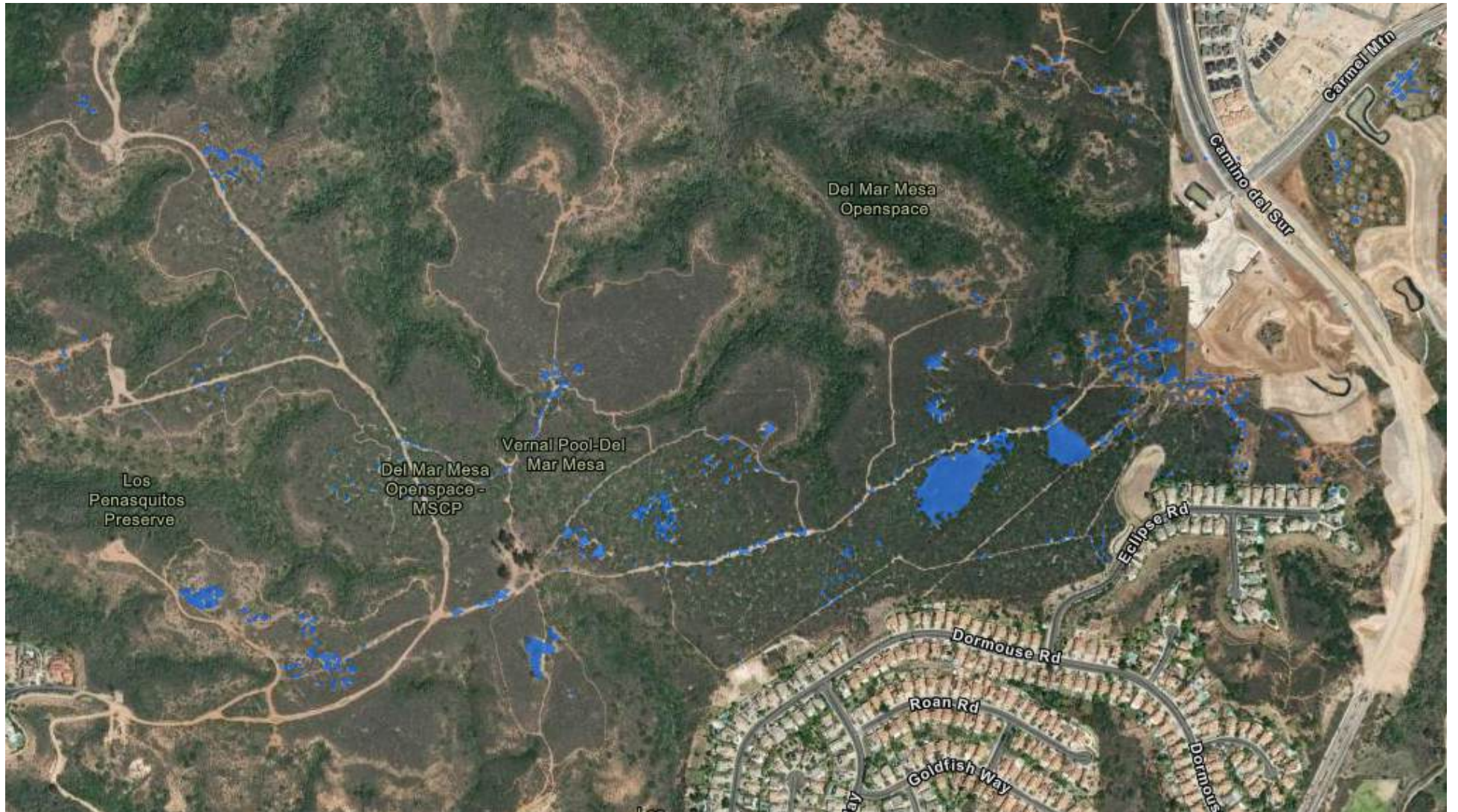
Introduction to the Del Mar Mesa Preserve

- **Significant remnant ecological landscape**
- **Integral component of natural open space preserves and wildlife corridors in the northern City of San Diego**
- **“Biological Core Area” under MSCP**









Los Penasquitos Preserve

Del Mar Mesa Openspace - MSCP

Vernal Pool-Del Mar Mesa

Del Mar Mesa Openspace

Camino del Sur
Carmel Mtn

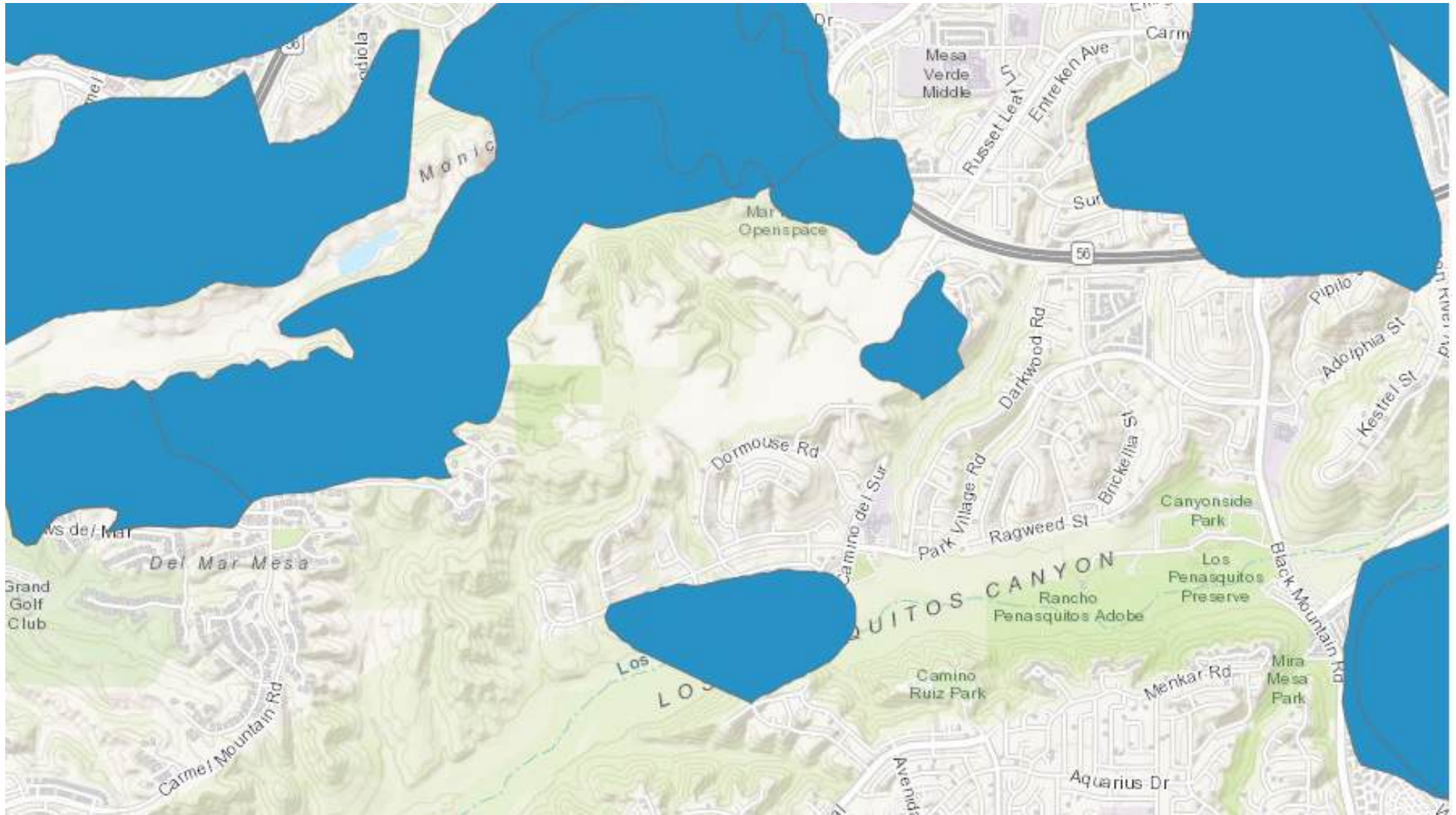
Eclipse Rd

Dormouse Rd

Roan Rd

Goldfish Way

Dormous



Conservation History of the Del Mar Mesa Preserve

- **Pre-1979 – Planned for dense residential development**
- **1978 & 1979 – San Diego mesa mint and designation of “Future Urbanizing Area”**
- **1986 – First preserve land acquired**



Conservation History of the Del Mar Mesa Preserve

- **1990 – Campaign for preservation**
- **1992 - 1994 – General Plan “Environmental Tier” and Future Urbanizing Area Framework Plan**
- **1994 - 1998 – San Diego Multiple Species Conservation Plan**

Conservation History of the Del Mar Mesa Preserve

- **Early 2000s – Most of preserve acquired**
- **2000s – Mountain bikers discover DMMP**
- **2003 - 2015 – Resource Management Plan
and compromise trail system**

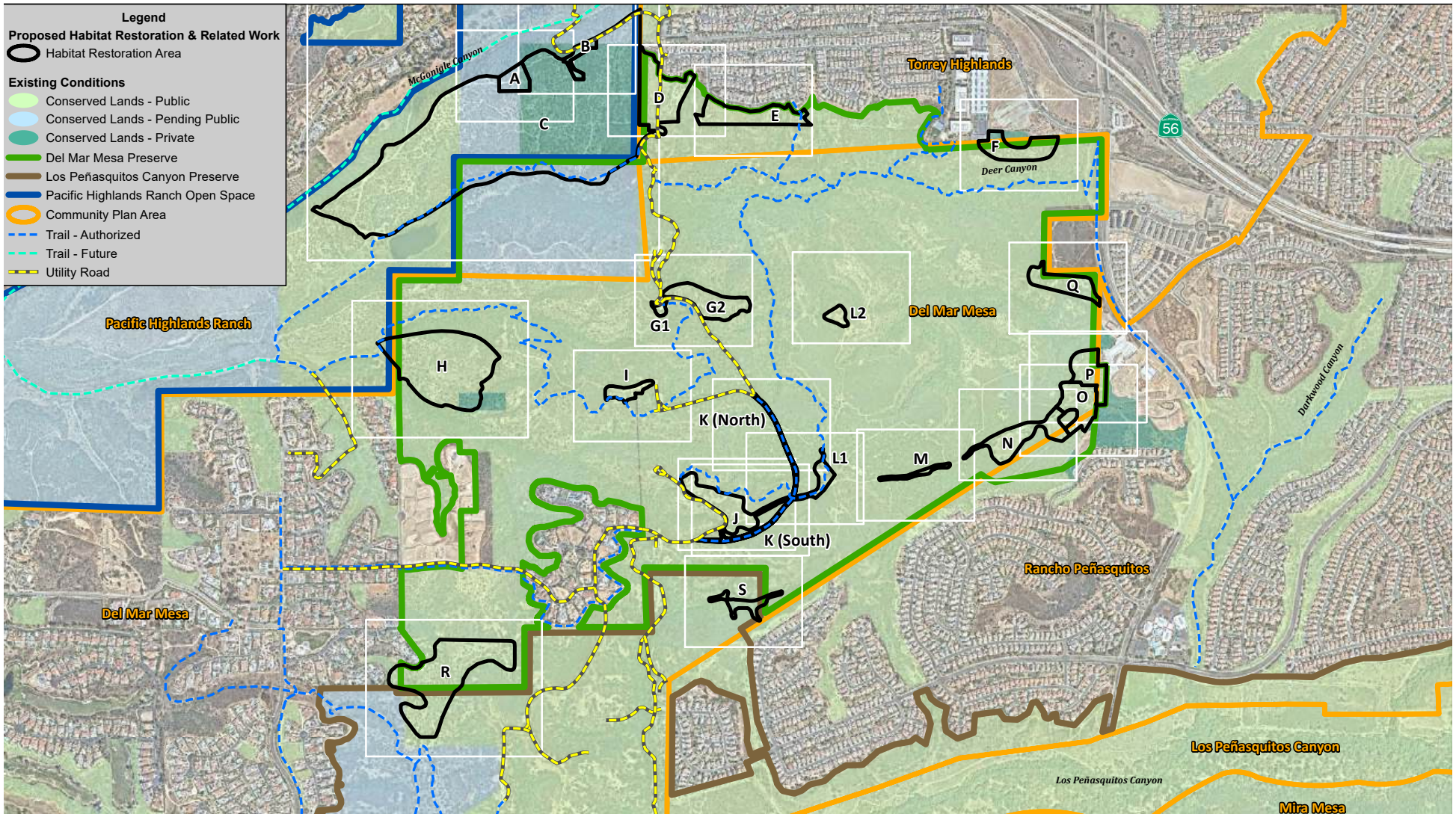
Conservation History of the Del Mar Mesa Preserve

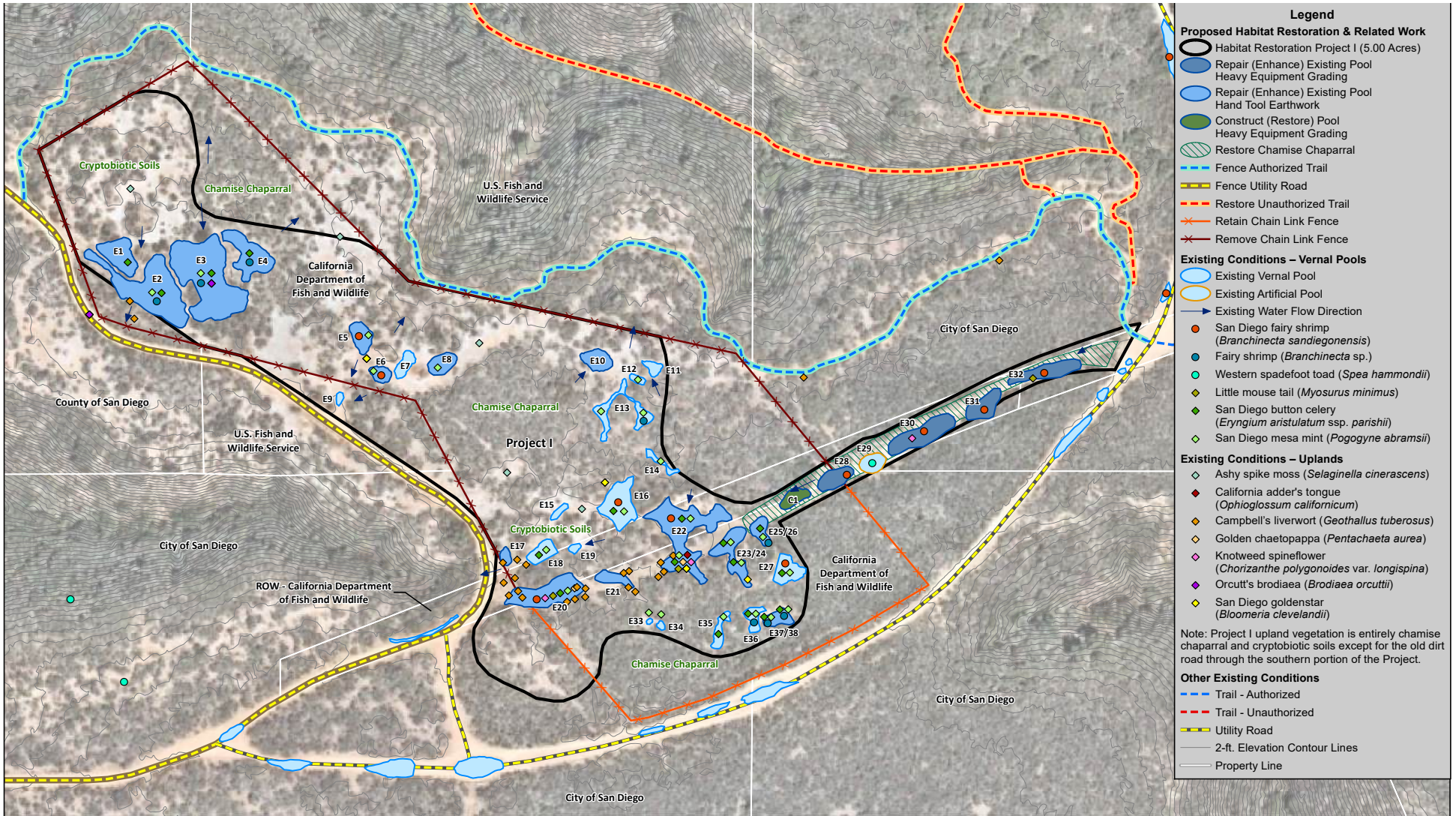
- **2017 – San Diego Vernal Pool Habitat Conservation Plan**
- **2020 - 2022 – Exponential increase in trail use during COVID and electric off-road vehicles**
- **Takeaway – DMMP is for resource protection**

DRAFT
**PROGRAMMATIC HABITAT RESTORATION AND
MONITORING PLAN FOR THE DEL MAR MESA PRESERVE**

February 2023







Elements of Habitat Restoration

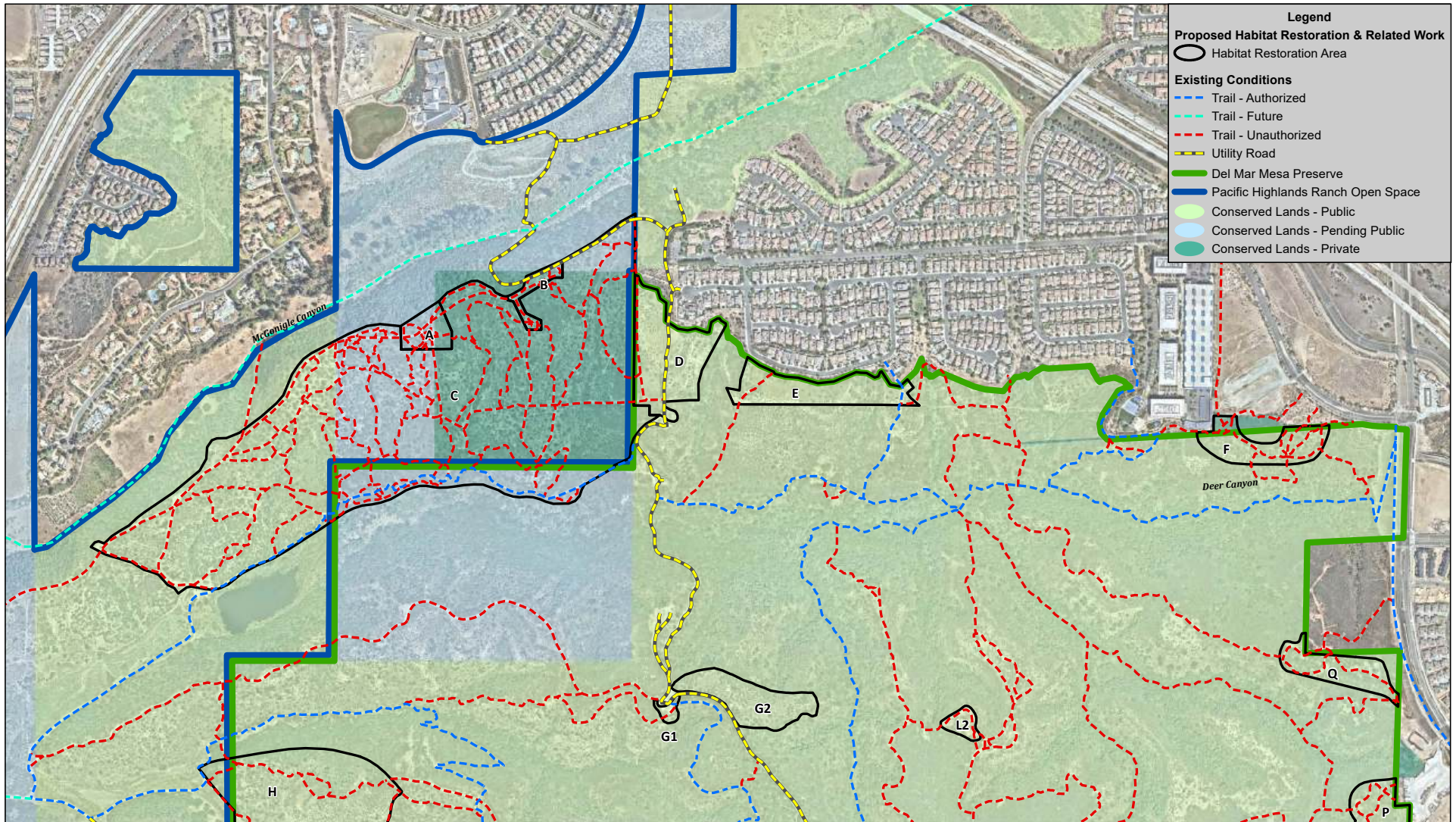
- **Survey for existing resources**
- **Minimize impacts to existing resources**
- **Remove refuse**
- **Repair damaged terrain**
- **Restore and enhance damaged vegetation**

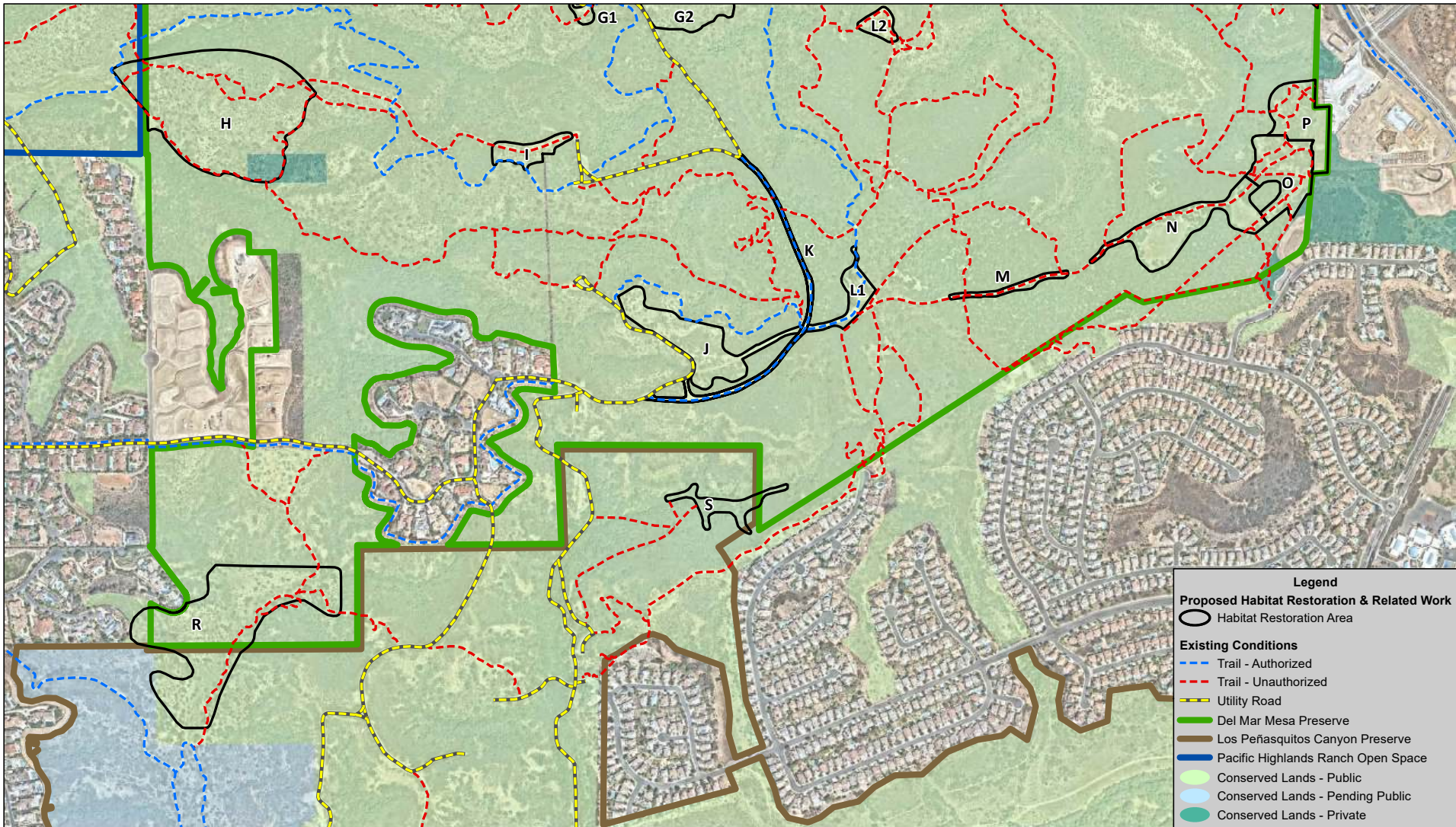
Elements of Habitat Restoration

- **Replace non-native vegetation with natives**
- **Benefit native resident and migratory birds**
- **Benefit other native animals**
- **Control invasive non-native plants**
- **Increase populations of rare plants**

Elements of Habitat Restoration

- **Improve demarcation of legitimate authorized trails and utility roads**
- **Remove unauthorized trails**
- **Educate visitors**
- **Monitor, document, and report results**





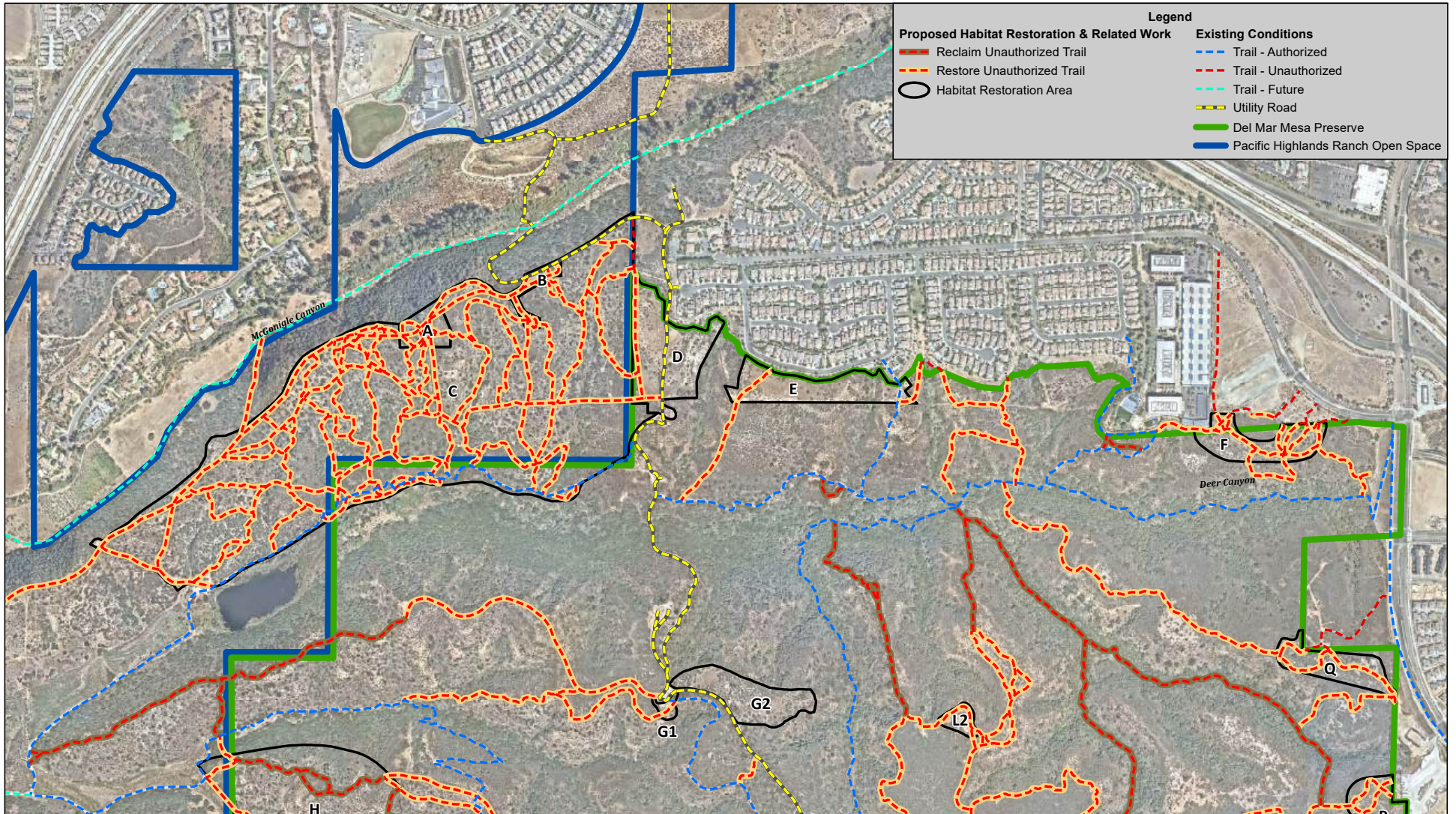
Legend

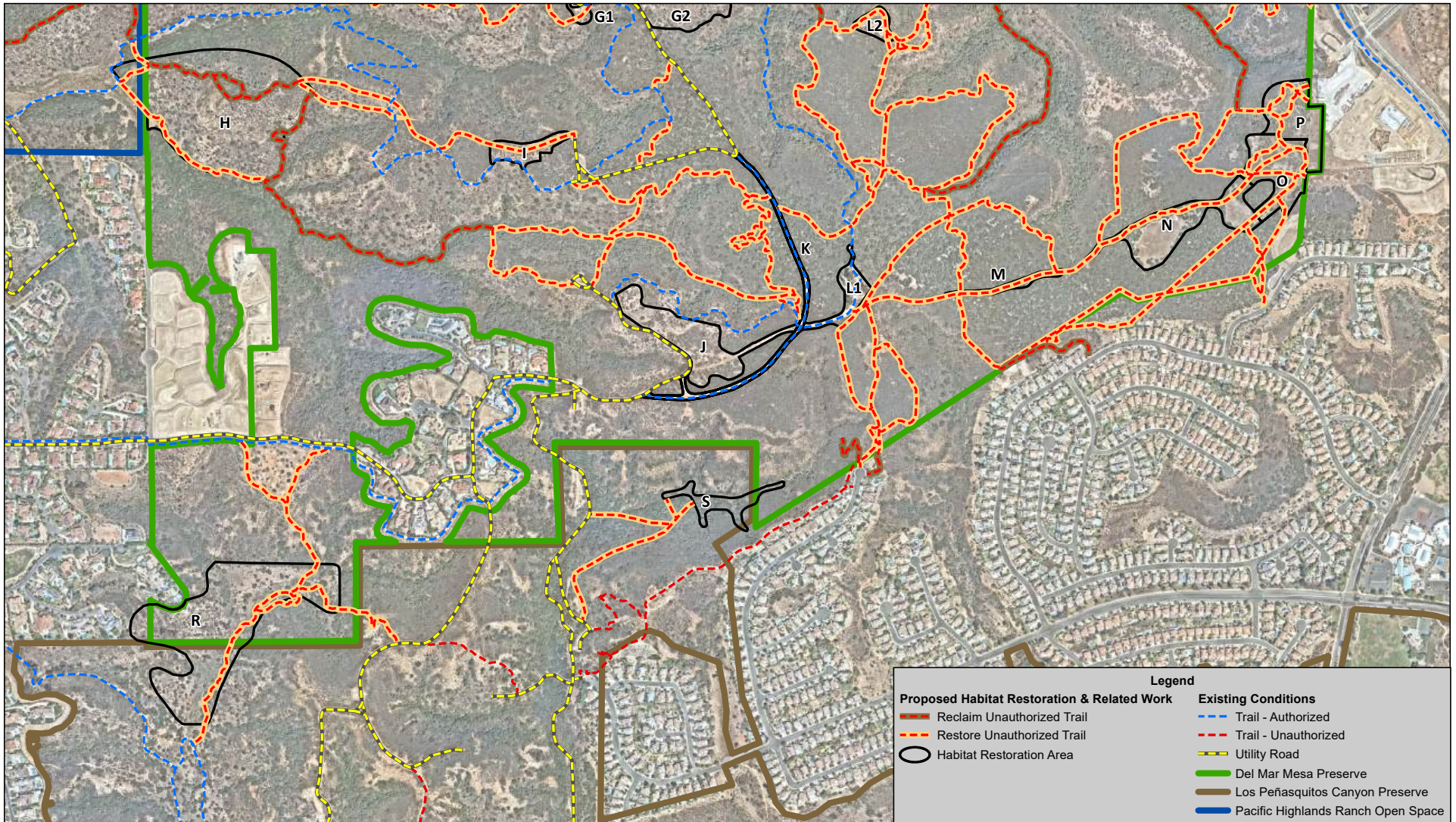
Proposed Habitat Restoration & Related Work

- Habitat Restoration Area

Existing Conditions

- Trail - Authorized
- Trail - Unauthorized
- Utility Road
- Del Mar Mesa Preserve
- Los Peñasquitos Canyon Preserve
- Pacific Highlands Ranch Open Space
- Conserved Lands - Public
- Conserved Lands - Pending Public
- Conserved Lands - Private









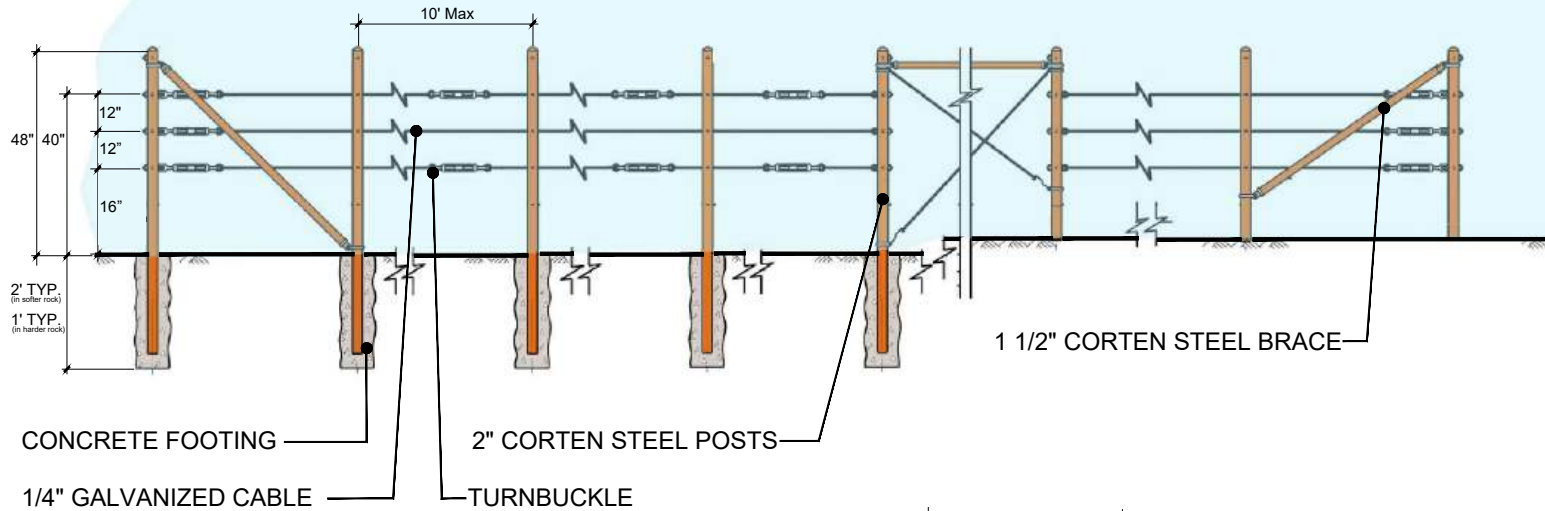




SIMILAR TO THIS



AND THIS



Not to Scale



Cable Fence – Illustrative





Partnership with City

- **City provides entry permits, review and approval of restoration plans, and grading permits as appropriate**
- **Conservancy conducts planning, design, permitting, fundraising, implementation, and monitoring.**

Thank you!

The Chaparral Lands Conservancy

www.chaparralconservancy.org | [facebook](https://www.facebook.com/chaparralconservancy)

970 West Valley Parkway PMB 456

Escondido, CA 92169

(760) 809-9244

director@chaparralconservancy.org

