

Pure Water San Diego Morena Conveyance South and Middle and Conveyance Bike Lanes Project Update

Clairemont Mesa Planning Group

September 17, 2024

SD Phase 1 Projects



MBC	Metropolitan Biosolids Center
NCWRP	North City Water Reclamation Plant & Flow Equalization Basin
NCPWF	North City Pure Water Facility & Pump Station
NCPWP	North City Pure Water Pipeline, Dechlorination Facility and Subaqueous Pipeline

Morena Pump Station & Pipelines



PUMP STATION



WATER FACILITY



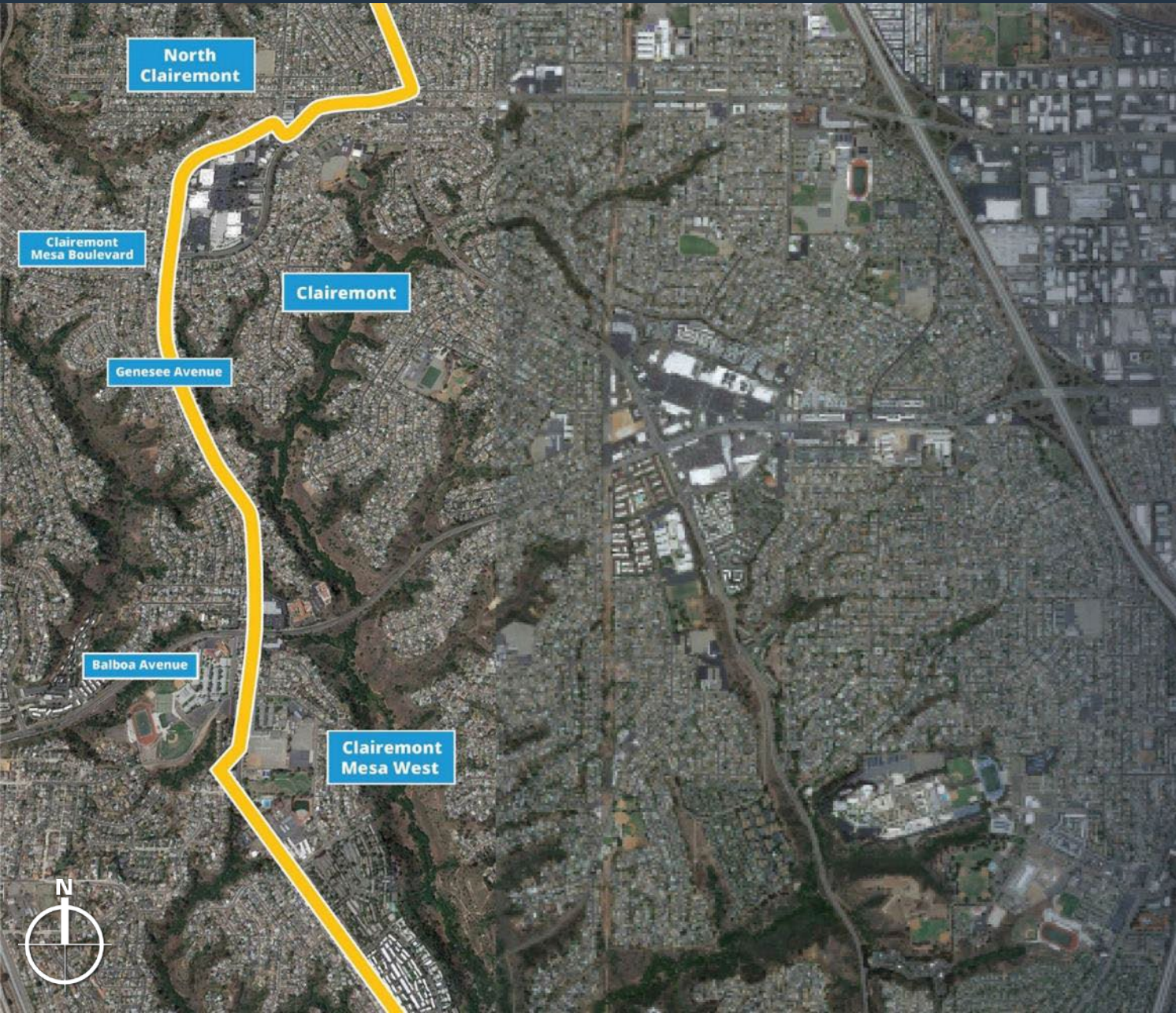
BIOSOLIDS

SD Morena Southern/Middle Alignment



- Will connect the Morena Pump Station at Sherman and Custer Streets and the Morena Pipelines Middle Alignment at Clairemont Dr. and Iroquois Ave.
- Construction is underway

SD Morena Southern/Middle Alignment



- Will connect the Morena Pipelines Southern Alignment in Bay Park to the Morena Pipelines Northern Alignment and Tunnels in University City
- Construction is underway

- Daytime work for pipeline installation
- Nighttime work for pipeline welding
- Driveway access maintained at all times
- One northbound and southbound lane open on Clairemont Drive during working hours
- Access maintained at all times for emergency responders
- Crews continuing northbound on Clairemont Drive as they progress
- Next Milestone: Clairemont Drive and Clairemont Mesa Boulevard



SD W. Morena Blvd. & Buenos Ave.

- Nighttime (9 p.m. to 5 a.m.) pipeline installation at Buenos Ave. and W. Morena Blvd.
- 24 hour work between Buenos Ave. and W. Morena Blvd.
- All businesses remain open in the area
- Access maintained at all times for emergency responders
- 6 weeks to complete this phase



SD Future work – Bay Park

- Daytime work for pipeline installation
- Nighttime work for pipeline welding
- Singleblock full closure to accommodate work
- Parking accommodations nearby for impacted blocks
- Access maintained at all times for emergency responders
- Trash, delivery services not interrupted
- Sidewalks open
- Crews continuing northbound as they progress



SD Paving and Bike Lanes

- All streets impacted by pipeline installation will be repaved
- Paving to occur in large stretches overnight
- Notification of work via blast
- Select curb ramps will be replaced
- Bike lanes to be installed on:
 - *Genesee Ave.*
 - *Clairemont Mesa Blvd.*
 - *Clairemont Dr.*
 - *Morena Blvd.*
 - *W. Morena Blvd.*





Stay Informed



Website:
purewatersd.org



Phone Line:
8336677973
833MORPWSD



Social Media:
[@purewatersd](https://www.instagram.com/purewatersd)

purewatersd@sandiego.gov

Sign Up for Project Emails

