

COMMUNITY MEETING 2

SOUTH SHORES PARK GENERAL DEVELOPMENT PLAN

MISSION BAY PARK IMPROVEMENT FUND OVERSIGHT COMMITTEE

Sept. 3, 2024



SCHMIDT
DESIGN
GROUP



- Introductions
- Project Overview
- Community Meeting #1 Summary
- Existing Conditions
- Amenity Prioritization Exercise
- Discussion & Next Steps

Mission Bay Park Improvement Fund Oversight Committee

- Jeff Johnson, Chair

City of San Diego

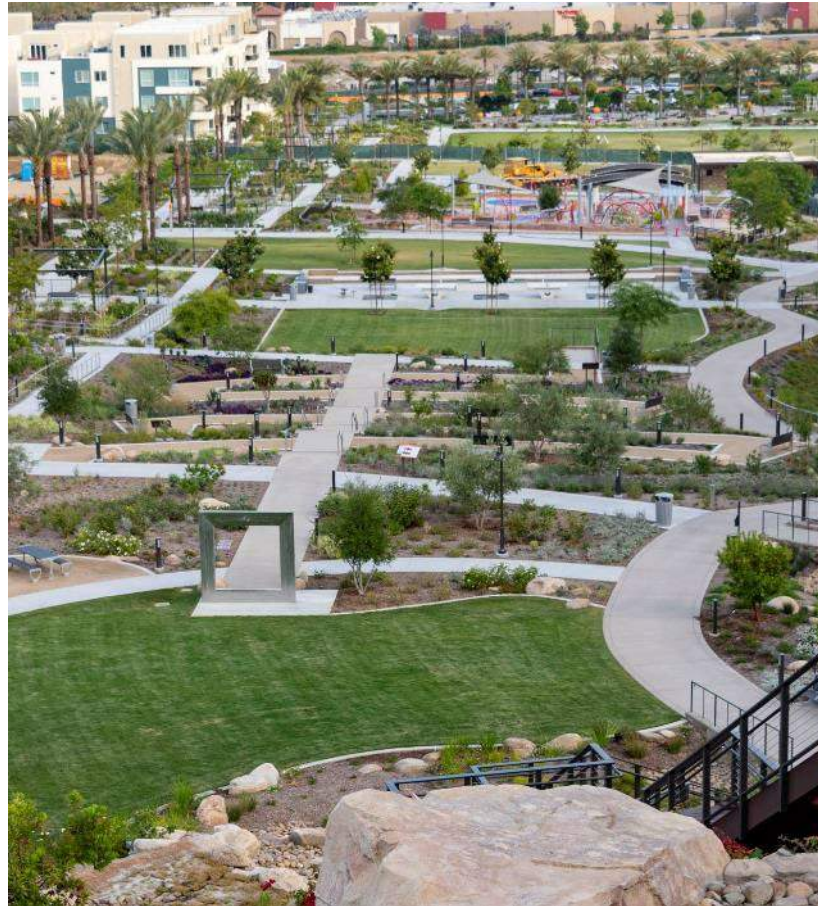
- Kevin Oliver, City of San Diego
- Kevin Nguyen, City of San Diego
- Leanne Kao, City of San Diego

Landscape Architect

- Jenn Montgomery, Schmidt Design Group
- Chase Conk, Schmidt Design Group



SCHMIDT
DESIGN
GROUP



- Landscape Architecture and Planning firm established in 1983
- 200+ Public Park Designs throughout California
- Project examples
 - Childrens Park
 - Tecolote Shores Playground
 - Civita Park

*SAFDIE RABINES
ARCHITECTS*

Safdie Rabines
Architect



CR Associates
Civil Engineer

DUDEK

Dudek
Environmental
Consultant

SCS
ENGINEERS

SCS Engineers
Environmental Consultant /
Landfill Expert



SCHMIDT
DESIGN
GROUP

PROJECT OVERVIEW

SOUTH SHORES





Rose Marie Starns South Shores Park

- 96 acres
- East of Sea World
on Sea World Drive

Sunrunner Site

- 9.5 acres



Rose Marie Starns South Shores Park

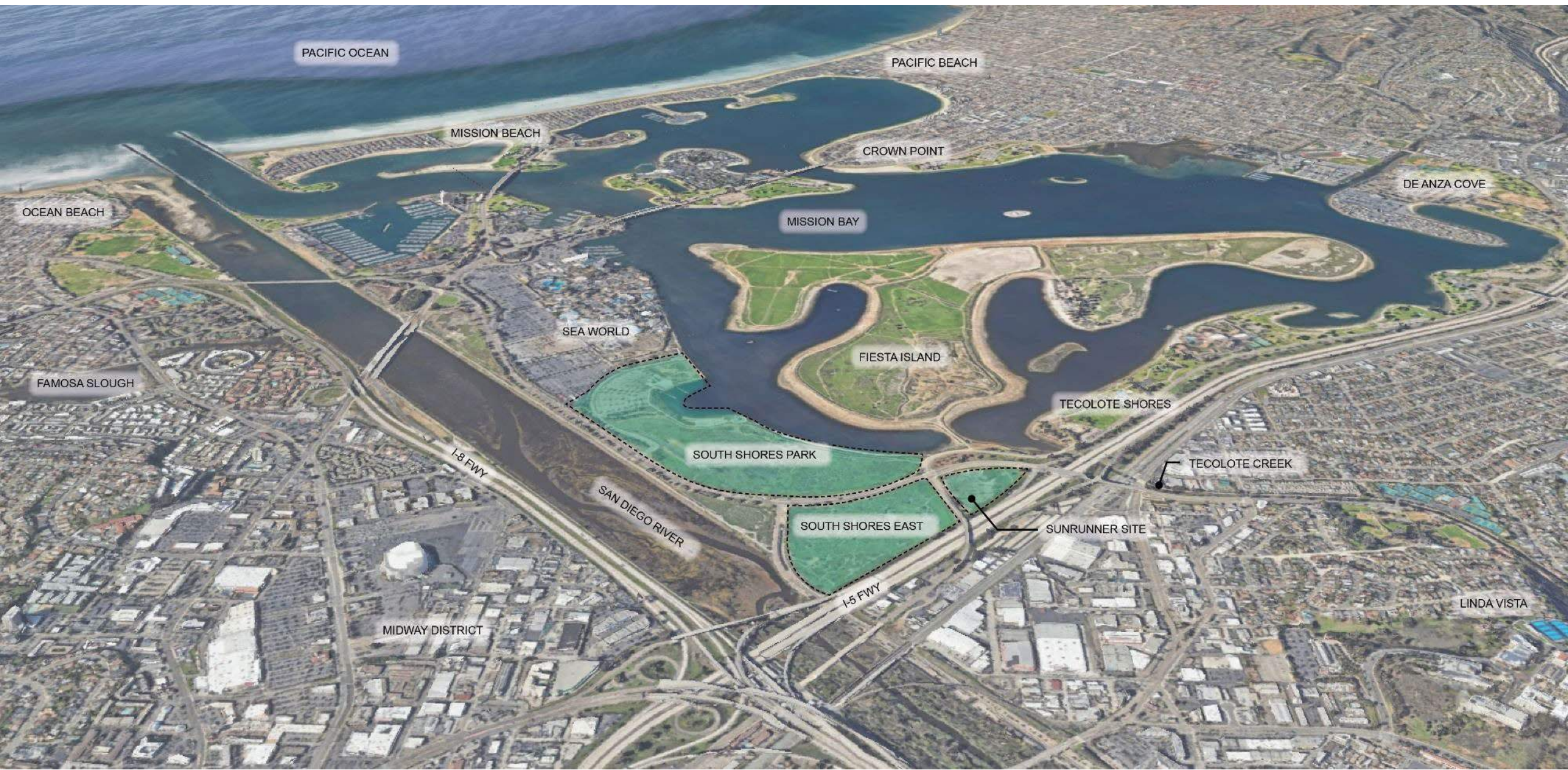
- 96 acres
- East of Sea World
on Sea World Drive

Sunrunner Site

- 9.5 acres

South Shores East

- 33.5 acres









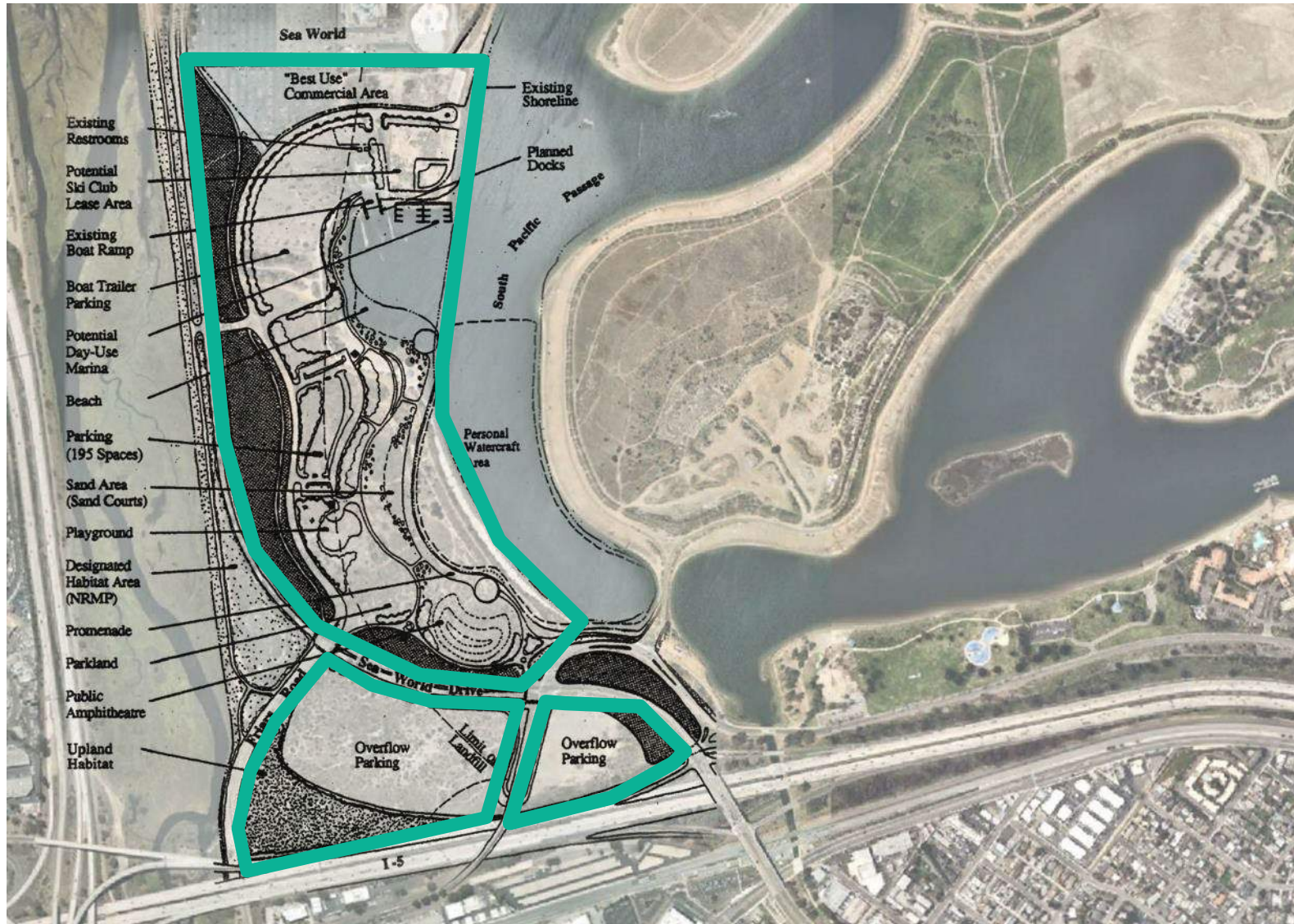
COMMUNITY FEEDBACK - MEETING #1

SOUTH SHORES

October 3, 2023

Approx. 30 attendees

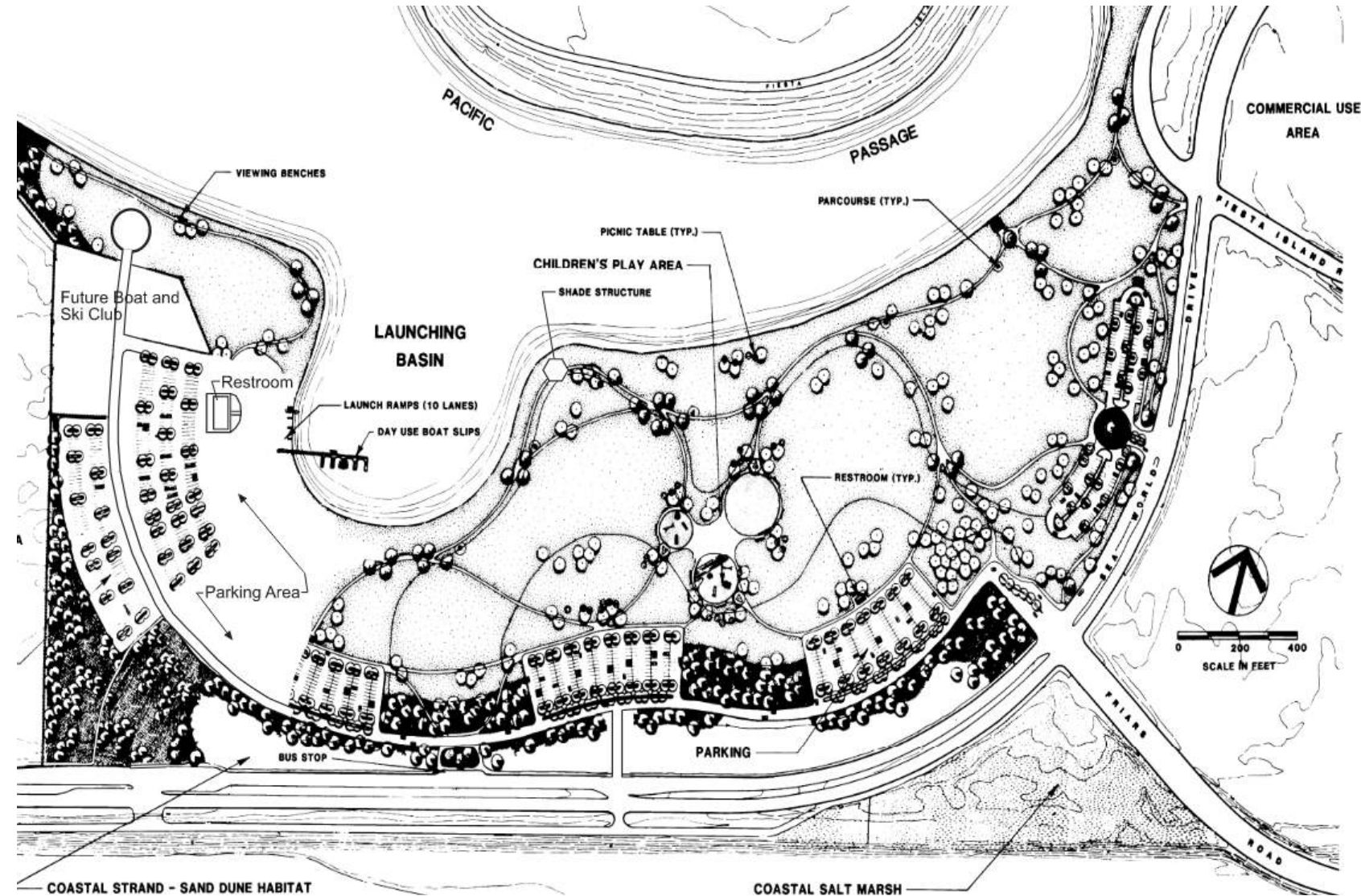
1. Reviewed Relevant Planning Studies
2. Discussed Vision for the Park



Reviewed Relevant Planning Studies Such As:

- Mission Bay Park Master Plan





Reviewed Relevant Planning Studies Such As:

- Mission Bay Park Master Plan
- South Shores Unapproved Draft GDP



1 in = 1,200 feet
 Feet
 0 500 1,000 2,000
Fiesta Island Concept Plan
figure 32 (b)

Reviewed Relevant Planning Studies Such As:

- Mission Bay Park Master Plan
- South Shores Unapproved Draft GDP
- Fiesta Island Park GDP



Reviewed Relevant Planning Studies Such As:

- Mission Bay Park Master Plan
- South Shores Unapproved Draft GDP
- Fiesta Island Park GDP
- De Anza Natural Plan

Discussed Vision for the Park:

SOUTH SHORES PARK GOALS

SOUTH SHORES PARK GOAL 1

An intensively used park area that attracts visitors to a variety of public and commercial recreation venues yielding, in aggregate, a summary view of the park's grand aquatic identity.

- 1.1 A destination which balances intensive water-oriented recreation uses with the provision of public access to the shore for passive recreation purposes, such as a pedestrian and bicycle pathway.
- 1.2 The area where the view from the roadway confluence at the eastern end of South Shores greets visitors as a primary gateway capturing near and long views of the aquatic environment, natural marsh areas, and adjacent recreation areas.
- 1.3 An area which provides bicycle and pedestrian paths allowing for recreational use and connecting to other park destinations.
- 1.4 An area which includes safe access to a path along the San Diego River floodway providing access to its rim for passive recreation purposes and viewing of the river and its resources.

Source: Mission Bay Park Master Plan

SOUTH SHORES PARK GOAL 2

The level of recreation intensity envisioned for South Shores may be compromised by the existing landfill in terms of suitability for foundations and toxic hazards. The costs required to mitigate its impact on development should be weighed against the potential fiscal and recreation benefits of such development. Regardless of the level of development intensity, South Shores should be:

A toxic-free recreation area posing no hazard to the health and safety of current and future park users.

SOUTH SHORES PARK QUESTIONNAIRE

October 3, 2023



1 Do the Master Plan Goals align with your vision for South Shores Park?

Yes No

2 Are there any additional goals that should be considered?

3 Please provide your contact information if you would like to be added to the South Shores Park General Development Plan mailing list:

Name _____ Email _____

Email additional feedback to:
Kevin Nguyen at Ktnguyen@sandiego.gov

Discussed Vision for the Park:

- Majority of respondents supported the existing master plan goals for South Shores which include:
 - Goal 1: A park that attracts visitors to a variety of recreation venues and provides a summary view of the park's grand aquatic identity.
 - Goal 2: A toxic-free recreation area posing no health hazard to park users.
- Other feedback related to the goals for South Shores included:
 - Reinforce the need for a toxic free space, as well as the importance of health and safety of the environment.
 - Study options for site uses that would provide revenue generation opportunities.
 - Include the South Shores East site in the study area.



EXISTING CONDITIONS

SOUTH SHORES



Existing Uses



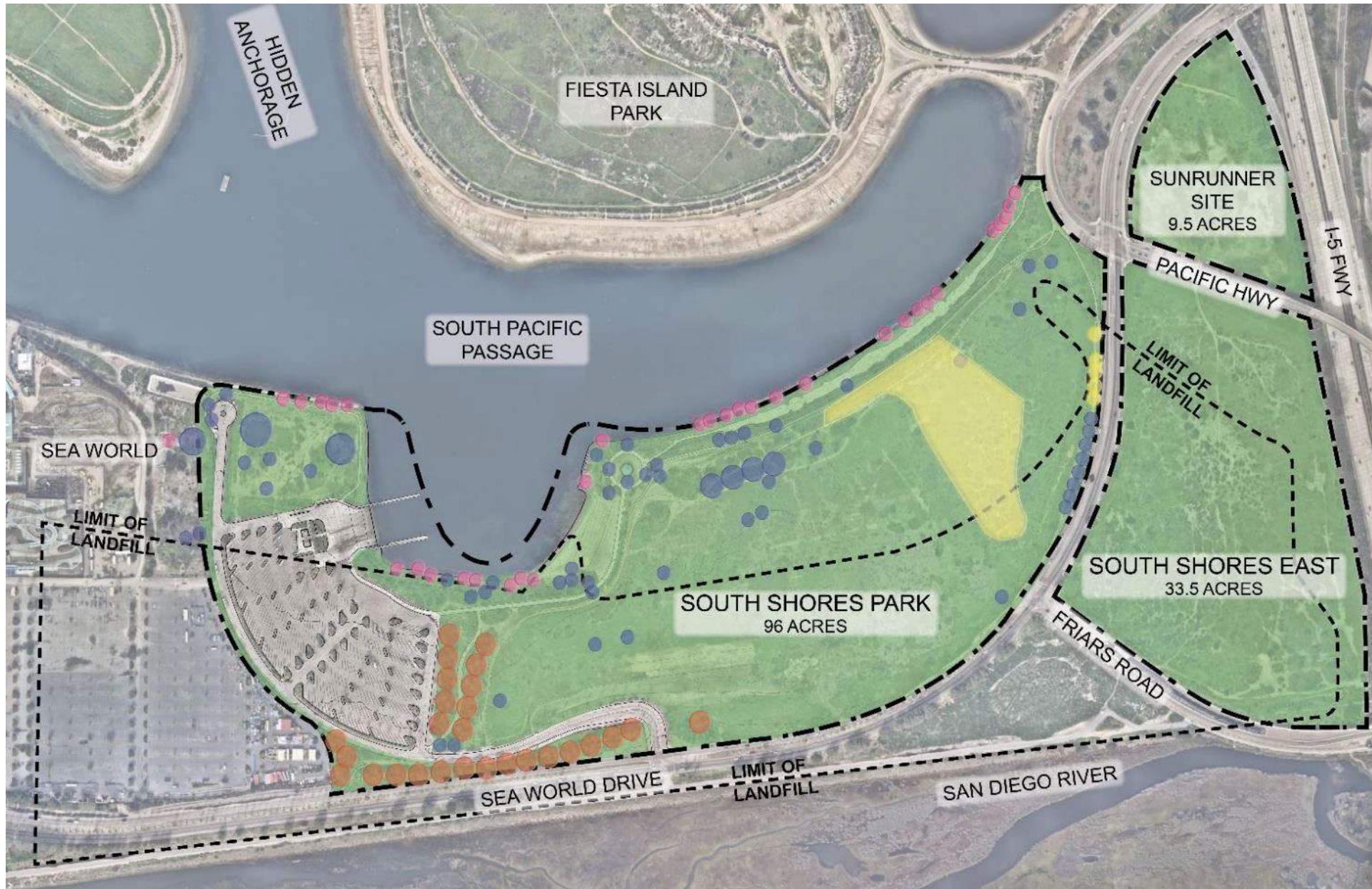
Existing Uses

- Former Mission Bay landfill operated from 1952-1959
- Status: Closed
- An investigation was commissioned by the City of San Diego and its Environmental Services Dept. (ESD) to evaluate the condition of the landfill.
- A report was prepared by SCS Engineers in 2006 to reveal their findings.



Landfill Safety

- Monitoring wells
- Surface water monitoring
- Regular monitoring of the landfill is done by the Solid Waste Enforcement Agency (LEA), a state governing body that oversees solid waste regulation.
- The Regional Water Quality Control Board also monitors the water adjacent to landfills.



Habitat

Special Status Species

- Lewis' Evening Primrose
- Woolly Seabligh
- Nuttall's Acmispon
- Torrey Pine



TORREY PINE



NUTTALL'S ACMISPON





SCHMIDT
DESIGN
GROUP

ANTICIPATED AMENITIES

SOUTH SHORES

- Existing Boat Launch Ramp



- Existing Boat Launch Ramp
- Existing Boat Trailer Parking



- Existing Boat Launch Ramp
- Existing Boat Trailer Parking
- Existing Beach Area



- Existing Boat Launch Ramp
- Existing Boat Trailer Parking
- Existing Beach Area
- New secondary Entrance at Friars Road Intersection



- Existing Boat Launch Ramp
- Existing Boat Trailer Parking
- Existing Beach Area
- Secondary Entrance at Friars Road Intersection
- Additional Bike Paths



- Existing Boat Launch Ramp
- Existing Boat Trailer Parking
- Existing Beach Area
- Secondary Entrance at Friars Road Intersection
- Bike Paths
- Additional Restrooms



- Existing Boat Launch Ramp
- Existing Boat Trailer Parking
- Existing Beach Area
- Secondary Entrance at Friars Road Intersection
- Bike Paths
- Additional Restrooms
- New Boat & Ski Club



- Existing Boat Launch Ramp
- Existing Boat Trailer Parking
- Existing Beach Area
- Secondary Entrance at Friars Road Intersection
- Bike Paths
- Additional Restrooms
- Boat & Ski Club
- Silent Flyers (location TBD)



- Existing Boat Launch Ramp
- Existing Boat Trailer Parking
- Existing Beach Area
- Secondary Entrance at Friars Road Intersection
- Bike Paths
- Additional Restrooms
- Boat & Ski Club
- Silent Flyers (location TBD)
- Additional Visitor and Overflow Parking at SunRunner Site





SCHMIDT
DESIGN
GROUP

POTENTIAL AMENITIES

SOUTH SHORES

Passive vs Active Amenities

PASSIVE ←

→ ACTIVE



Habitat and open space



Flexible open grass areas



Playgrounds



Multipurpose sports fields



Picnic pavilions



Nature trails



Outdoor fitness



Multipurpose hardcourts



SCHMIDT
DESIGN
GROUP

POTENTIAL PASSIVE AMENITIES

SOUTH SHORES

Flexible Open Grass Areas



Habitat & Open Space



Nature Trails



Additional Pavilion/Picnic Areas



Expanded Beach and Sand Area



Natural Shoreline Improvements



Elevated Boardwalks at Water's Edge



POLL

What additional passive amenities would you like to see in the park?

1. Flexible open grass area
2. Habitat and open space
3. Nature trails
4. Additional Pavilion/picnic space that can be reserved
5. Expanded beach and sand area
6. Natural shoreline improvements
7. Elevated boardwalks at water's edge
8. Other: _____

STATION 1

PLACE GREEN DOTS AT STATION #1





SCHMIDT
DESIGN
GROUP

POTENTIAL ACTIVE AMENITIES

SOUTH SHORES

Playgrounds



Multipurpose Sports Fields



Tennis Courts



Pickleball Courts



Basketball Courts



Multipurpose Hardcourts



Outdoor Fitness



POLL

What additional active amenities would you like to see in the park?

1. Playground
2. Multipurpose sports fields (baseball, soccer, football, field sports)
3. Tennis courts
4. Pickleball courts
5. Basketball courts
6. Multipurpose hardcourts (basketball/tennis and/or pickleball combined)
7. Outdoor fitness
8. Other: _____

STATION 2

PLACE GREEN DOTS AT STATION #2



POLL

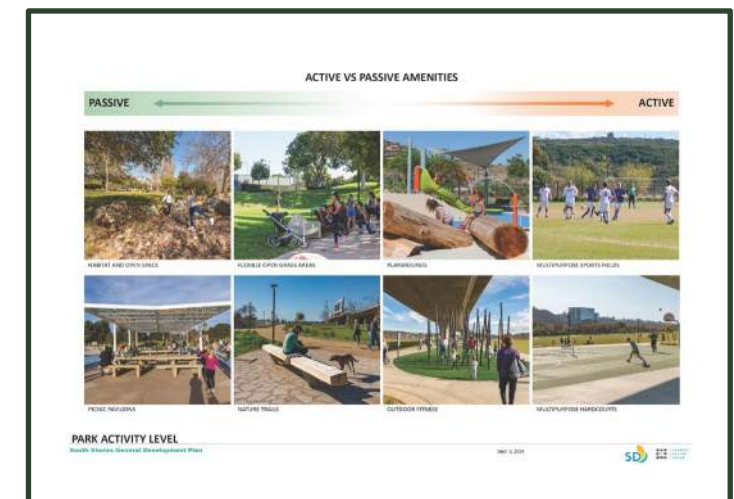
What is the optimal blend of uses for the South Shores site?

PASSIVE ←

→ ACTIVE

STATION 3

PLACE GREEN DOTS AT STATION #3





Discussion





Amenities Survey



Survey Should Take ~5 Minutes To Complete
Open Until October 18, 2024

For More Information

Please Visit

<https://sandiego.gov/SouthShoresGDP>

THANK YOU

SOUTH SHORES PARK GENERAL DEVELOPMENT PLAN

MISSION BAY PARK IMPROVEMENT FUND OVERSIGHT COMMITTEE



SCHMIDT
DESIGN
GROUP

