

Open Space Division

Resource Management Overview

San Diego Parks and Recreation Board
July, 18 2024

Natural Resource Management in the City of San Diego

- Conservation vs. Preservation
- Monitor the populations and potential impacts to over 85 separate species of plants/animals, and the environmentally sensitive lands they inhabit
- Complete maintenance and management projects to protect vulnerable species and ecosystems
- Work with regional partners (SD Zoo, The NAT, USGS, CDFW, USFWS, USGS, SANDAG and many others) to develop recovery plans



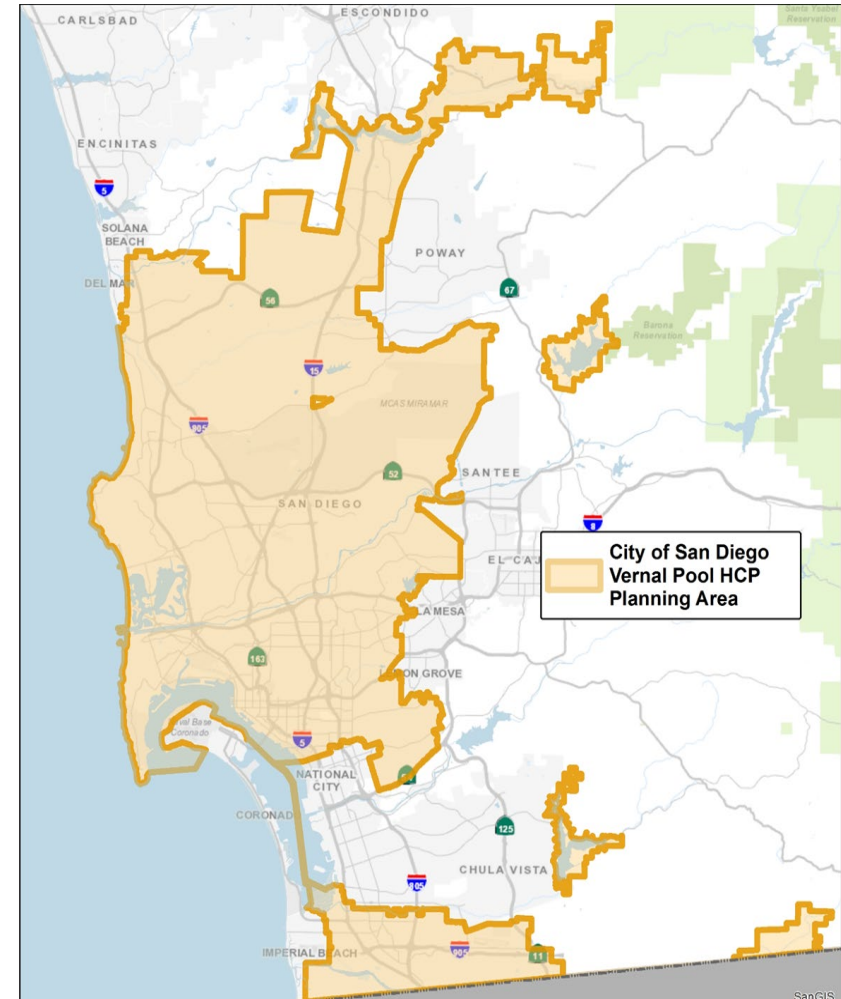
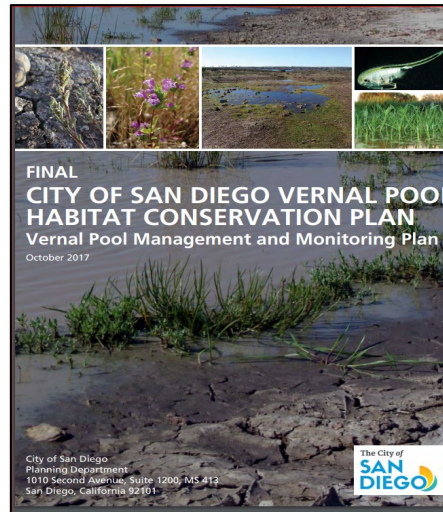
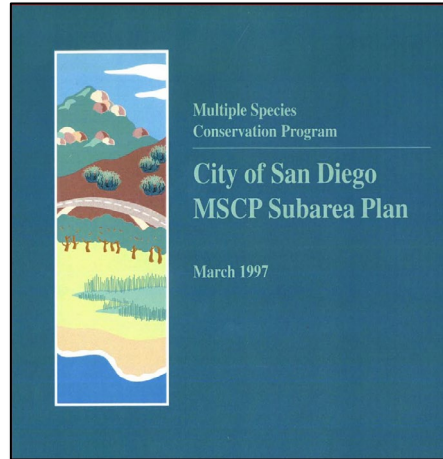
Multiple Species Conservation Program (MSCP) History

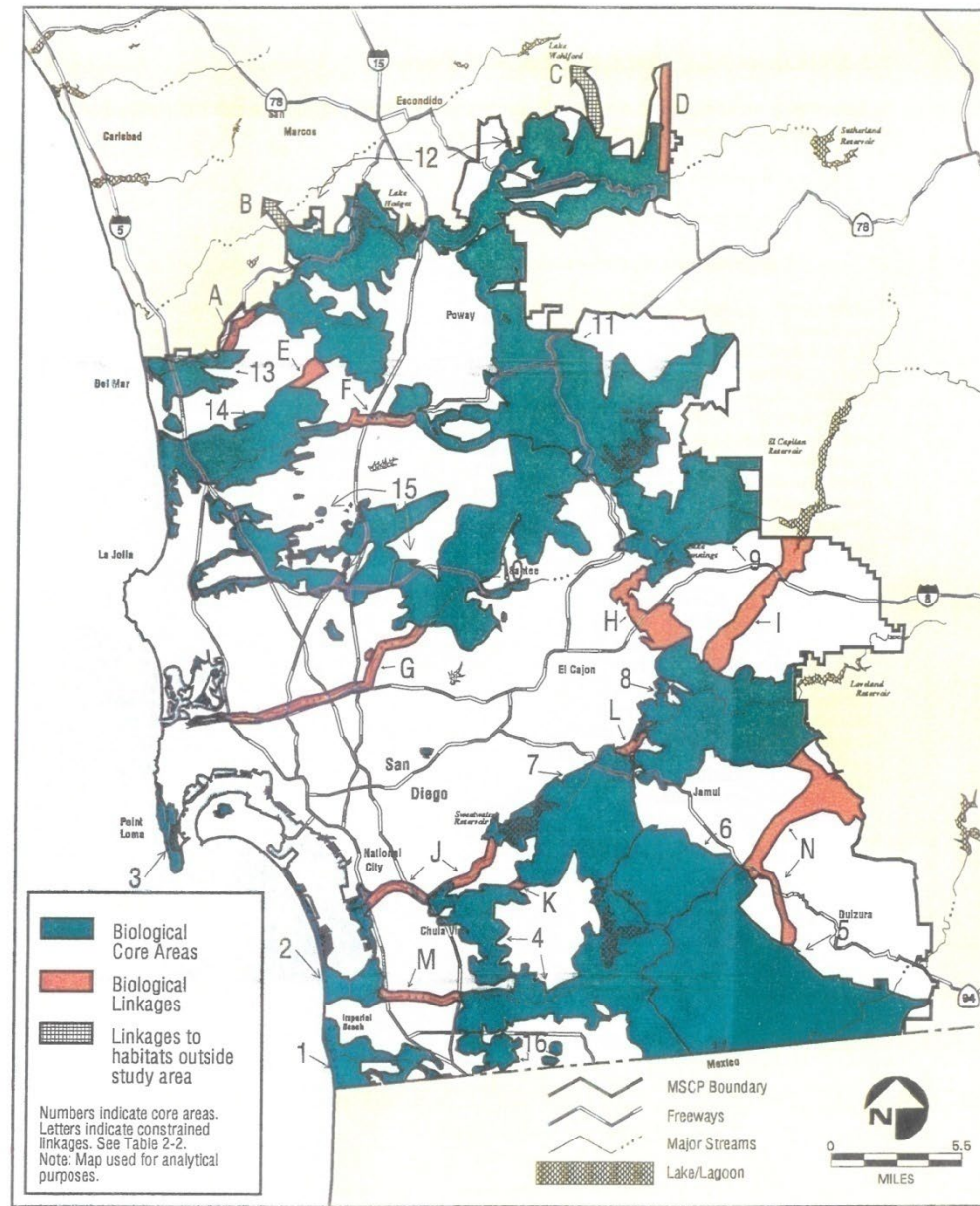
- Endangered Species Act of 1973
- Multiple Species Conservation Plan Development in San Diego Early 1990's
- MSCP Final Plan and Implementing Agreement 1998
- Vernal Pool Habitat Conservation Plan & Vernal Pool Maintenance and Monitoring Plan 2017

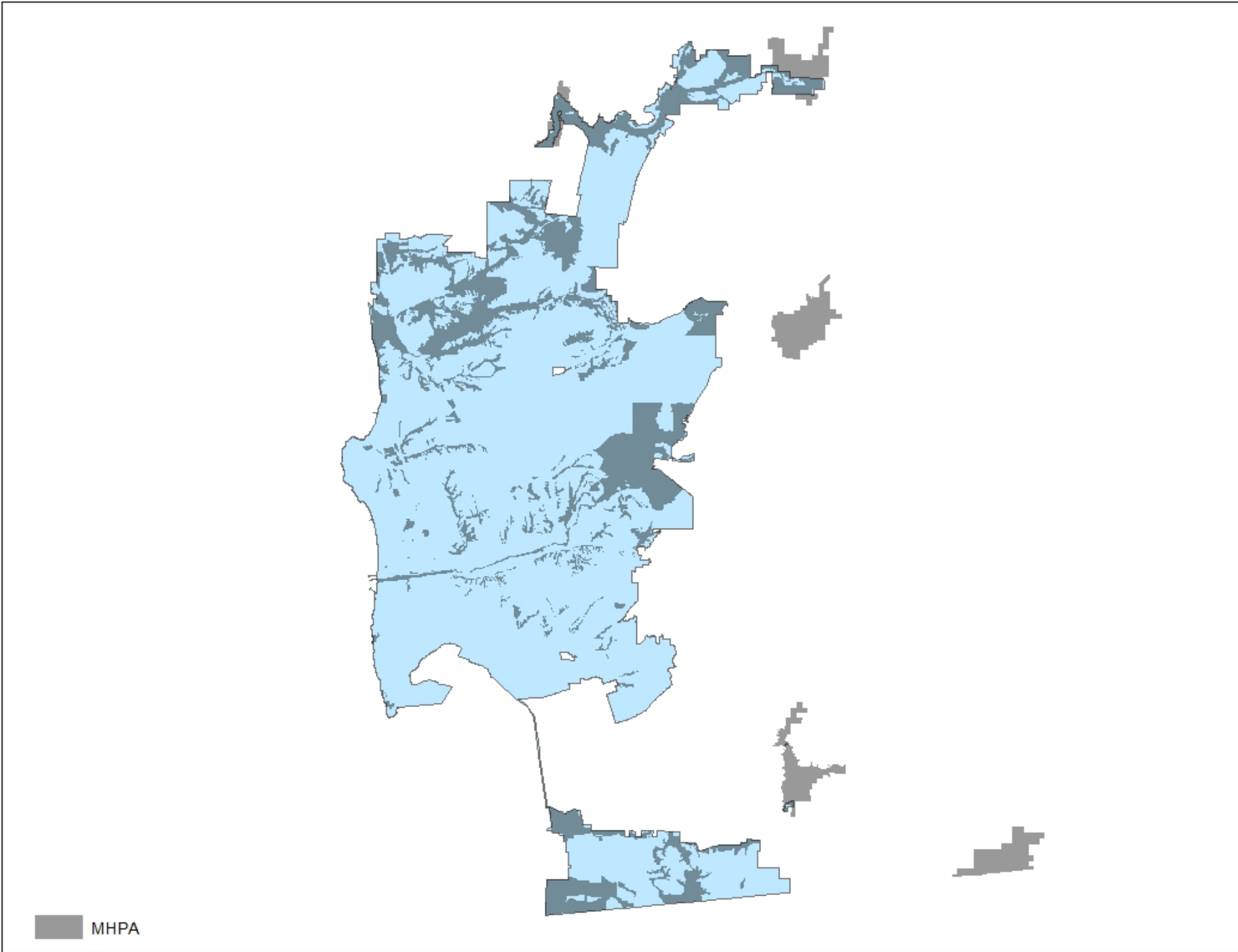


HCPs = ENTIRE CITY

- **1997-2047**
 - MSCP - 50 years
 - VPHCP - 29 years
- **206K ac**
 - Municipal
 - Cornerstone
- **Covers 85 Species**
 - 46 Plants
 - 39 Animals

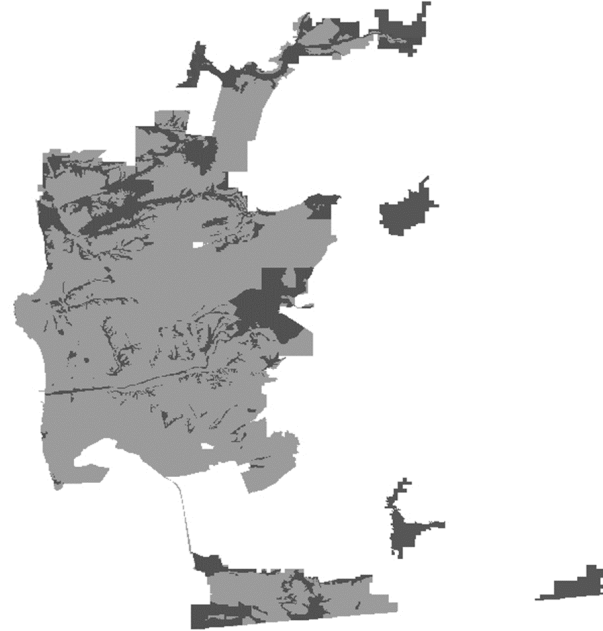






Preserve System

- 51,000 acres
- 27,000 acres open to the public
- 85 rare/threatened/
endangered species
- 178 trailheads
- 225 trail miles



Similar size to some of your favorite National Parks:

- Bryce Canyon, Utah: 35,835 acres
- Carlsbad Caverns, New Mexico: 46,766 acres
- Haleakala, Hawaii: 33,264 acres
- Mesa Verde, Colorado: 52,485 acres





MSCP Covered Flora (Plants)

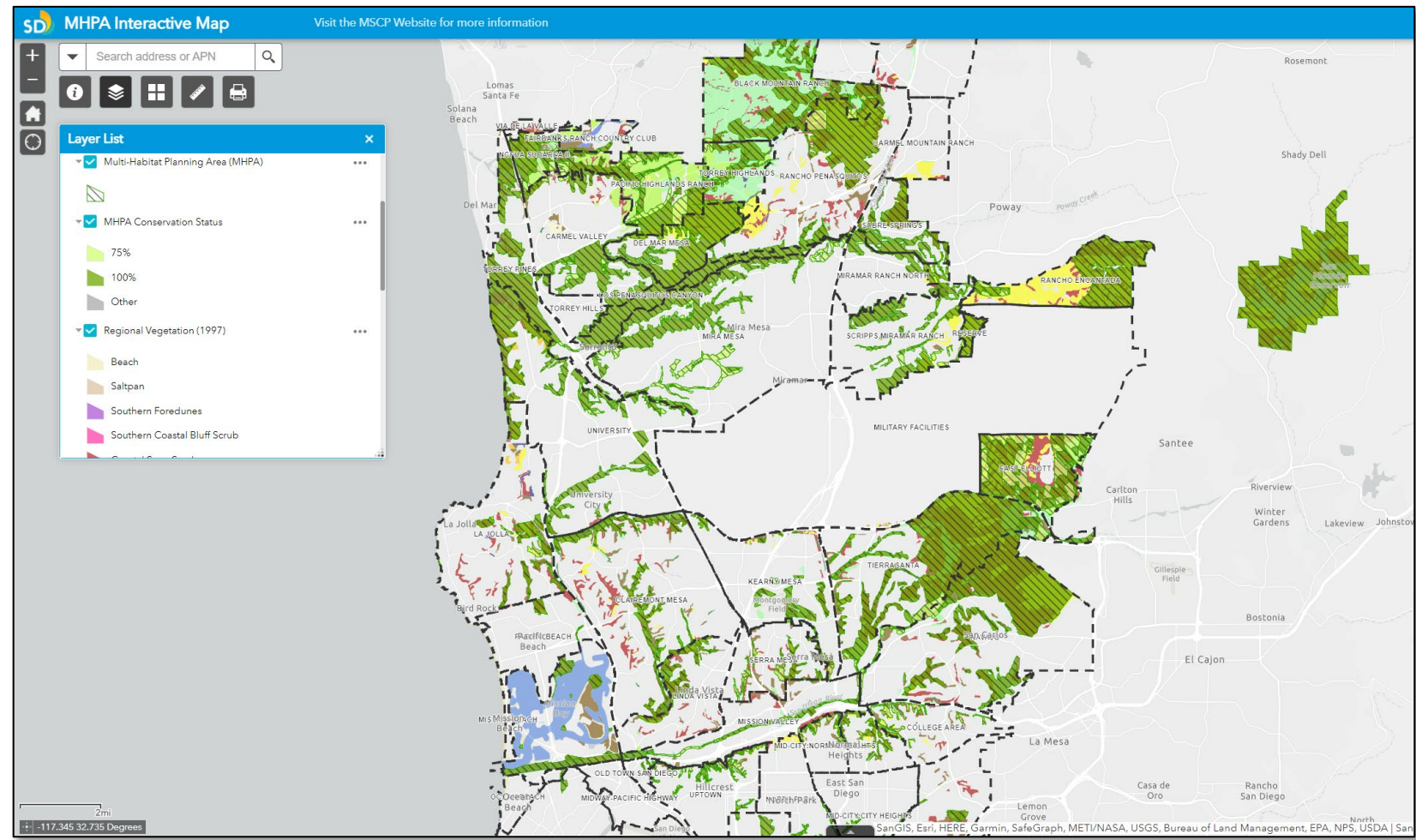




MSCP Covered Fauna (Animals)



MHPA Interactive Map



VPHCP Interactive Map

SD Vernal Pool Habitat Conservation Plan Interactive Map City of San Diego MSCP Visit the VPHCP Website

Search by Address or APN

Legend

- MHPA - Multi-Habitat Planning Area
- Vernal Pool HCP Layers (CLICK TO EXPAND)
 - ERAR-San Diego button celery
 - 1 or more
 - NAFO-Spreading navarretia
 - 1 or more
 - ORCA-California Orcutt grass
 - 1 or more
 - POAB-San Diego Mesa Mint
 - 1 or more
 - PONU-Otay Mesa Mint
 - 1 or more
 - SDFS-San Diego fairy shrimp

0.1mi 117.017 32.555 Degrees

Earthstar Geographics | Esri, HERE, Garmin

POWERED BY esri



MSCP Rare Plant Monitoring Report

City of San Diego

Sara Allen
August 12, 2021

[INTRODUCTION](#)

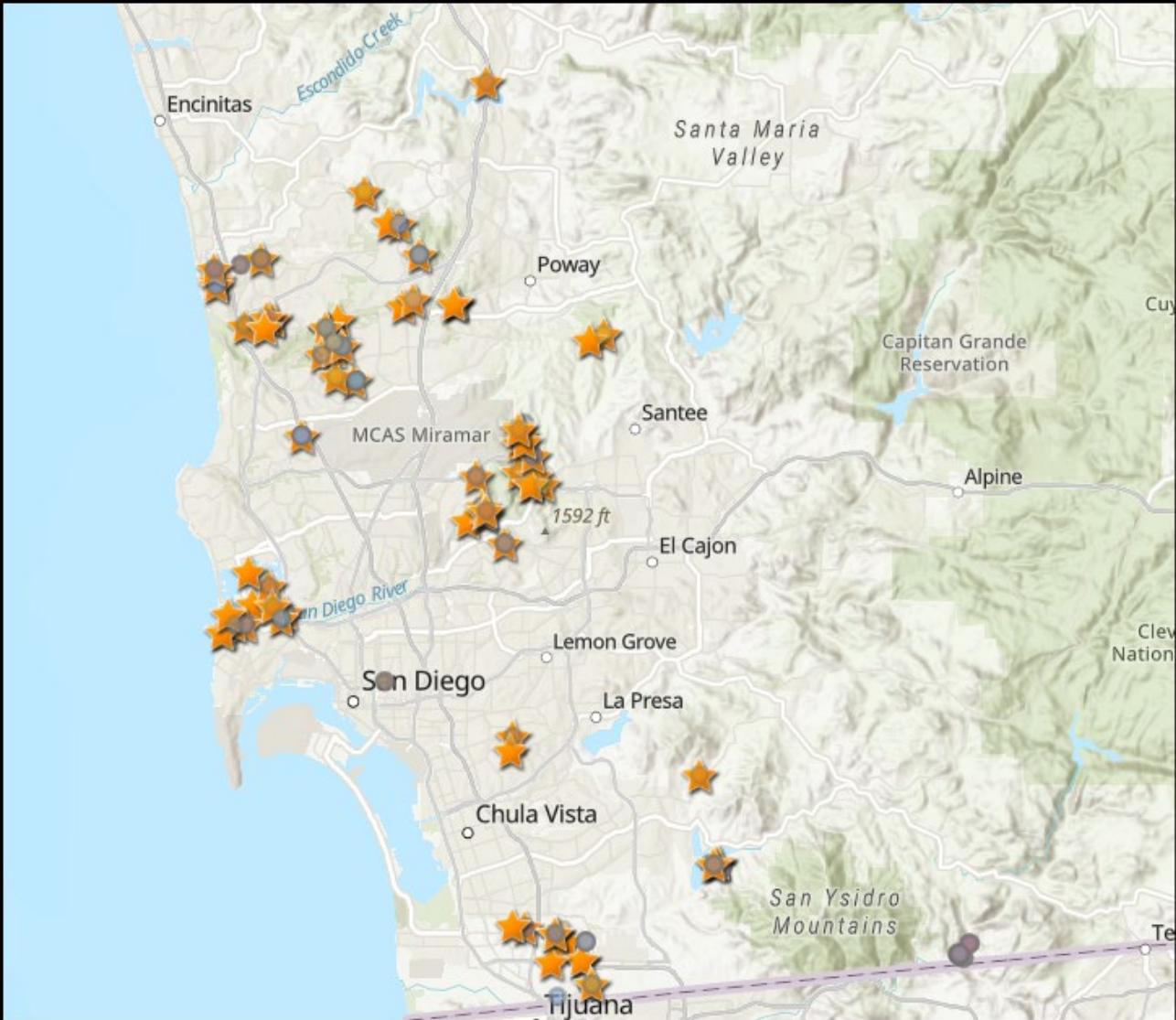
[MAP OF OCCURRENCES](#)

[DATA DASHBOARD](#)



MAP OF OCCURRENCES

The map below displays known rare plant occurrences and established sample points. Sample points monitored in 2020 are shown as orange stars on the map.



MSCP Rare Plant Data Dashboard

Summarized Monitoring Data for Rare Plant Occurrences and Sample Plots

Select a Species

- Coast wallflower
- Encinitas baccharis
- Jennifer's monardella
- Nuttall's acmispon
- Orcutt's birds-beak**
- Orcutt's brodiaea

Select an Occurrence

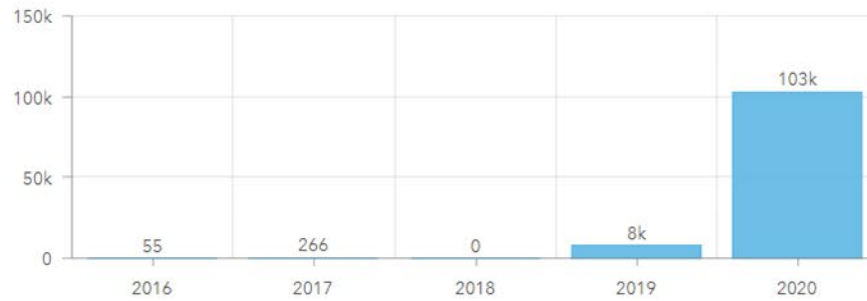
- Dennery Canyon (COOR7_3DREA007)**
- Otay Valley Regional Park (COOR7_3ORVA001)
- Otay Valley Regional Park (COOR7_3OVRP011)

Select Sample Plot

- COOR7_3DREA007_1**

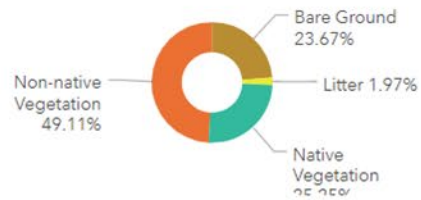
Occurrence Level Data

Number of Plants in Mapped Extent Over Time



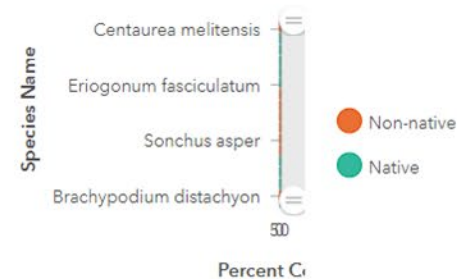
Sample Plot Data

Cover Types in Sample Plot



Percentages displayed indicate relative cover. Hover over chart segments to view absolute cover estimates in bold.

Associated Species in Sample Plot



Sample Plot Photo

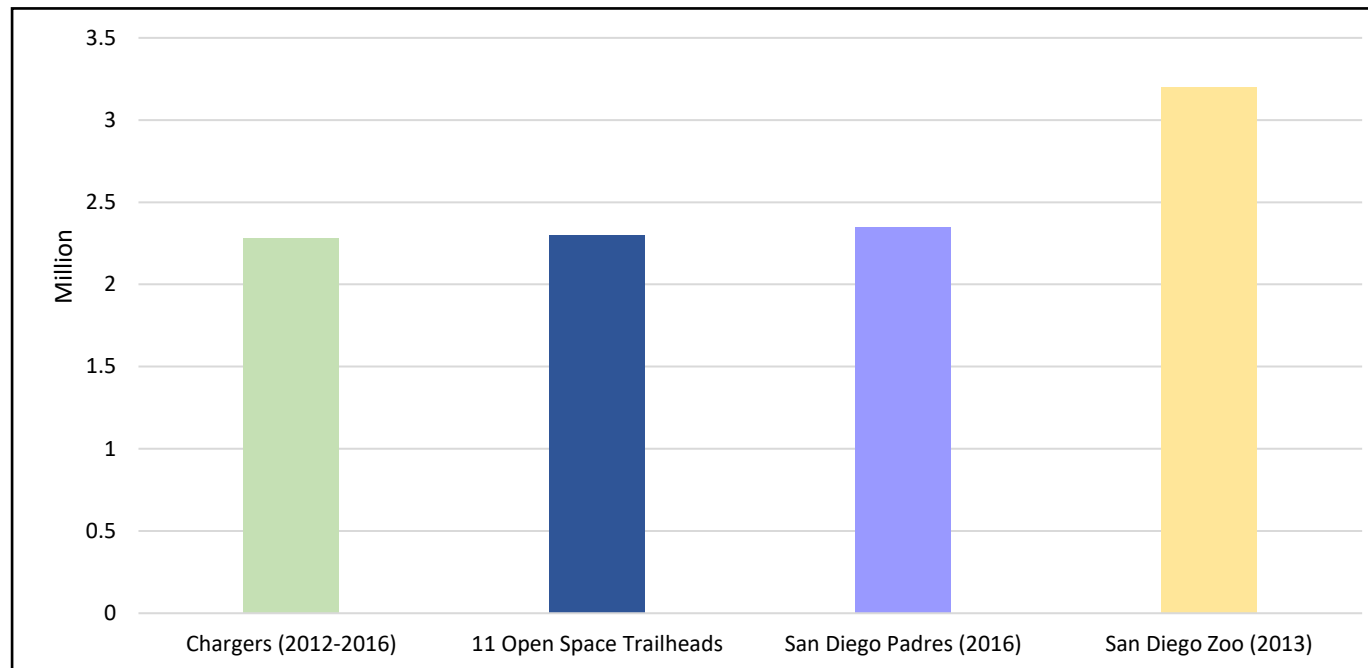


COOR7_3DREA007_1_Photo1_06122020_resize.jpg

Some photos are not currently available for online viewing.

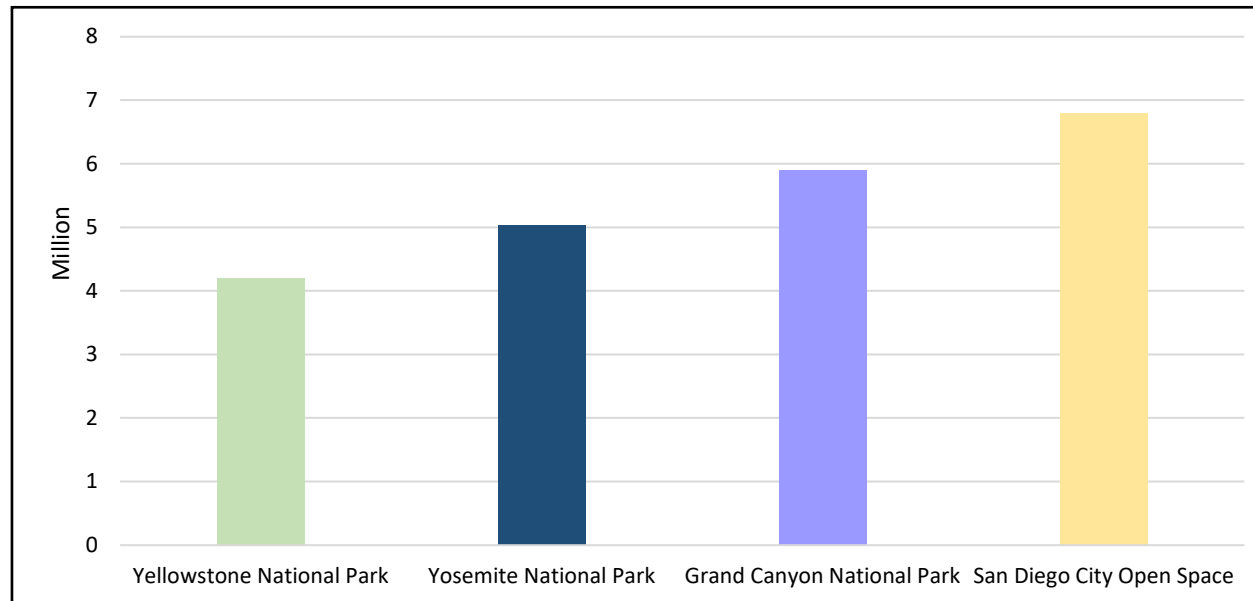
Park Use Study

- Study estimate at 11 sites in 12-month period = 2.3 million visits



Park Use Study

- (Potentially inappropriate) Extrapolation of study to all City sites = 6.8 – 8.4 million annual visits



Thank You!

San Diego Parks and Recreation Board ,
Natural Resource Staff, Park Rangers,
And ALL of our Conservation Partners

Contact Info: Mberninger@Sandiego.gov
619-727-1215