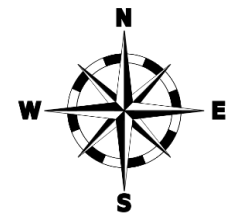
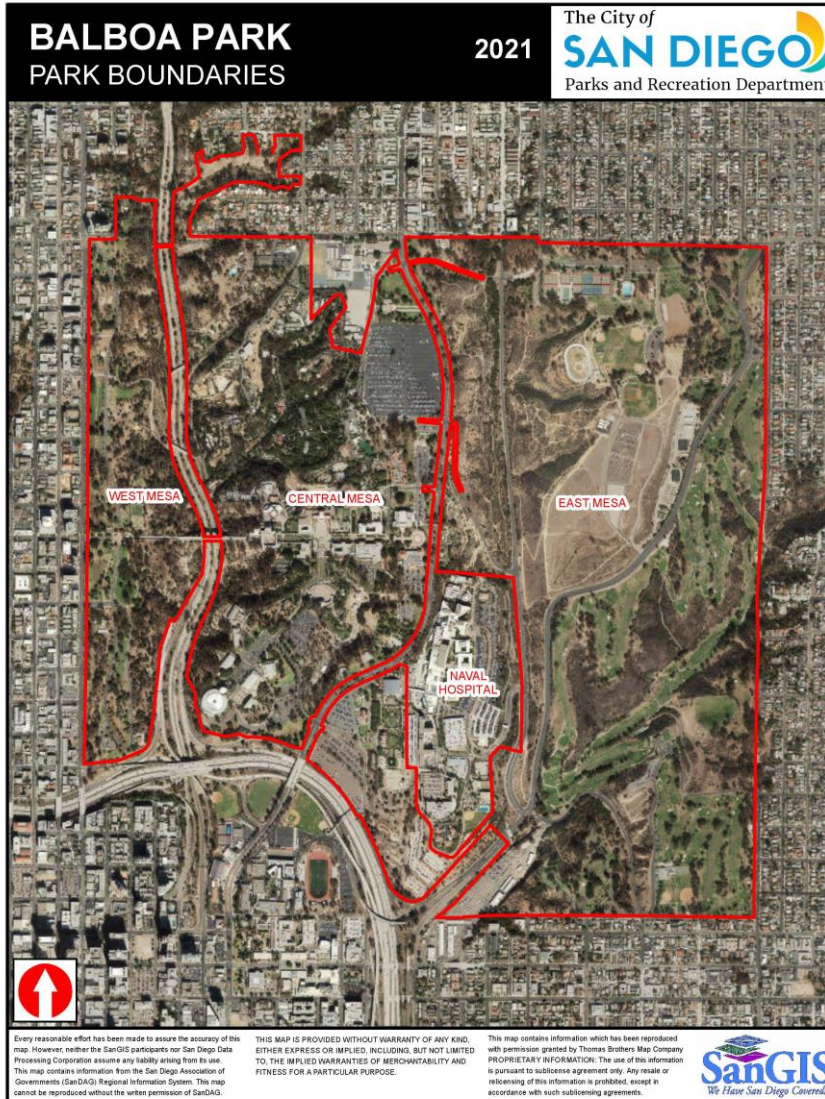


6th & Juniper Roundabout

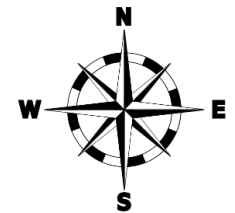
Balboa Park Committee Meeting
July 11, 2024





Project Limits

- This Project is located on 6th Ave and Juniper St. BMP located at 6th Ave and Elm St
- Uptown, Balboa Park, District 3





North Bound on 6th Avenue



South Bound on 6th Avenue



East Bound on Juniper Street

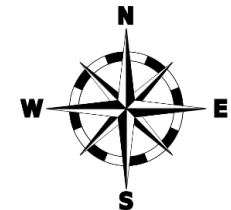
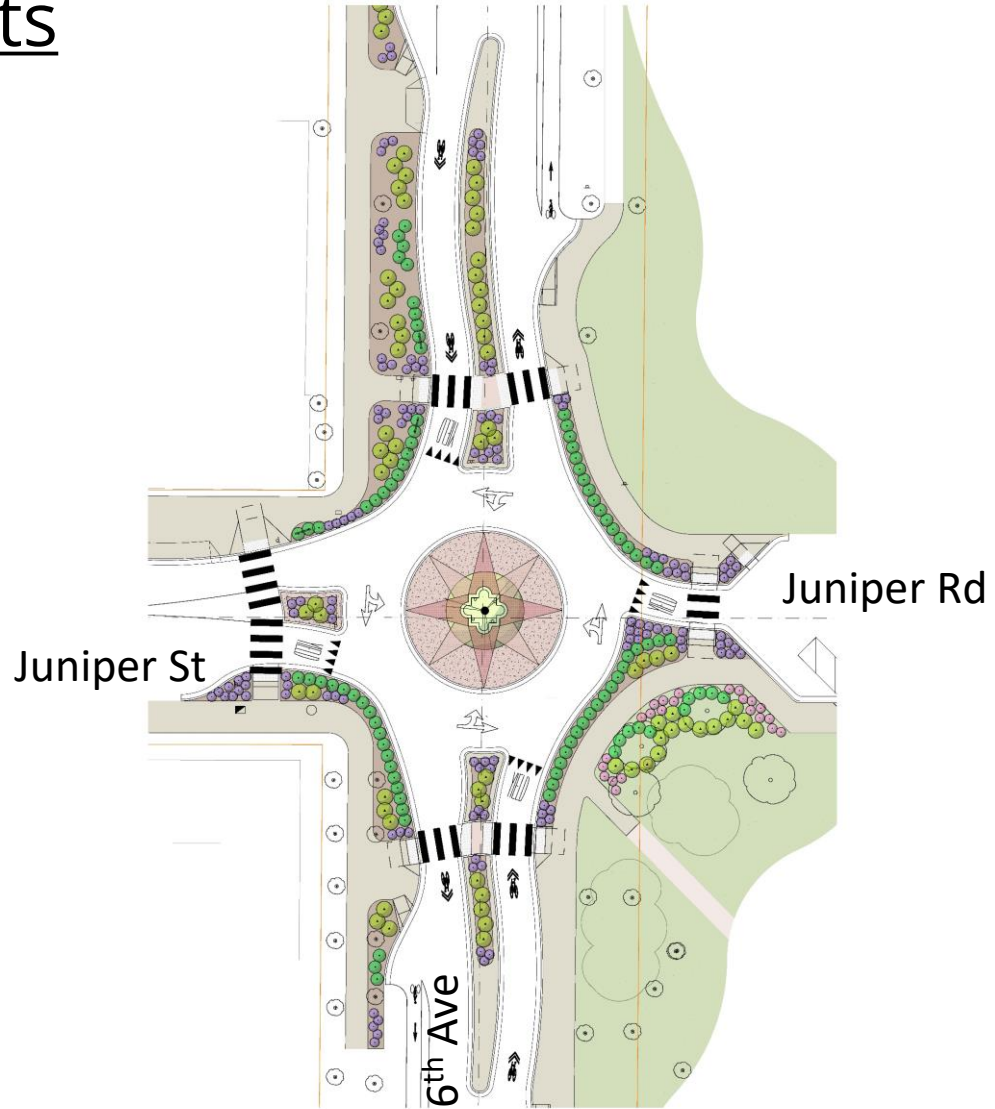


West Bound on Juniper Road

Existing Conditions

- No left turns on NB 6th Ave, EB Juniper St, and WB Juniper Rd.
- Existing Solar Rectangular Rapid Flashing Beacons on northern side of intersection only
- Wide-span Pedestrian Crossings
- Minimal traffic calming
- Diagonal parking and parallel parking on WB Juniper Road

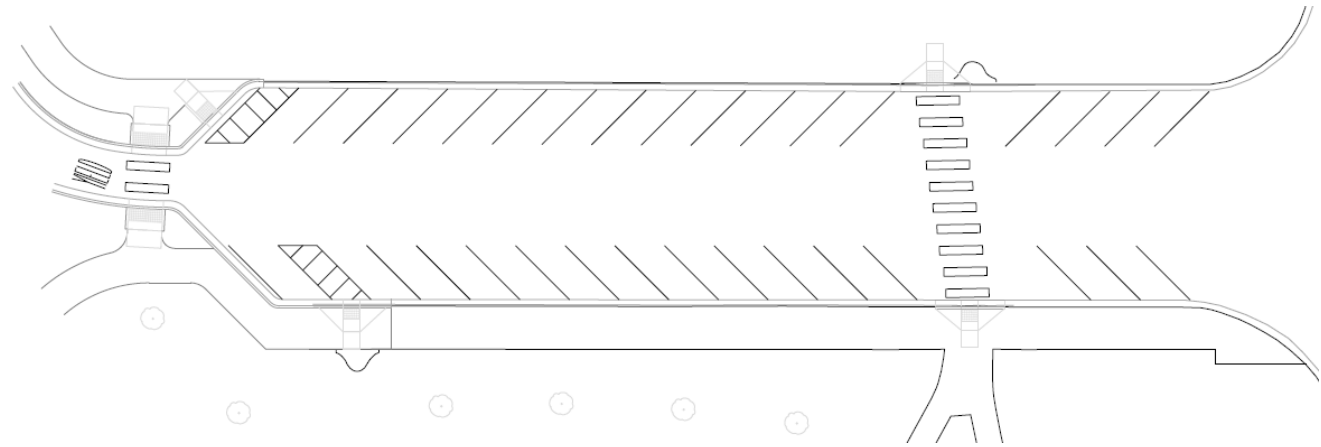
Proposed Improvements



Parking Improvements



Existing Parking Configuration



Proposed Parking Configuration

Project Scope

- Roundabout with truck apron
- Splitter Islands with passageways
- Curb Extensions
- Curb Ramps
- Bike Ramps
- Driveways
- Accessible Parking
- Additional Angled Parking
- Flashing Beacons (RRFB)
- Sidewalks
- Curb and Gutter
- Permanent Stormwater Treatment

- Continental Crosswalks
- Signing and Striping
- Landscape
- Street Resurfacing

Benefits

- Traffic Calming along 6th Ave
- Improved pedestrian access to the park
- Will allow left turn from Juniper Road onto 6th Ave which is currently restricted.
- Expanding park landscape areas along 6th Avenue (east side of project)

Project Schedule & Budget

Schedule

- Start Construction: Early 2026
- End Construction: Spring 2027
- Current Status: Finalizing Design

Budget

- Estimated Construction Cost: \$1,700,000





Thank You!