



Sefton Field Neighborhood Park Workshop #1

August 7, 2024

S P U R L O C K

The City of
SAN DIEGO



Agenda

1—Background

- General Development Plan Process
- Stakeholders

2—Site Overview

- Aerial Map
- Vicinity Park Amenities
- Park Views
- Existing Inventory
- Existing Circulation
- Site History

3—Workshop Exercises

4—Next Steps

General Development Plan Process

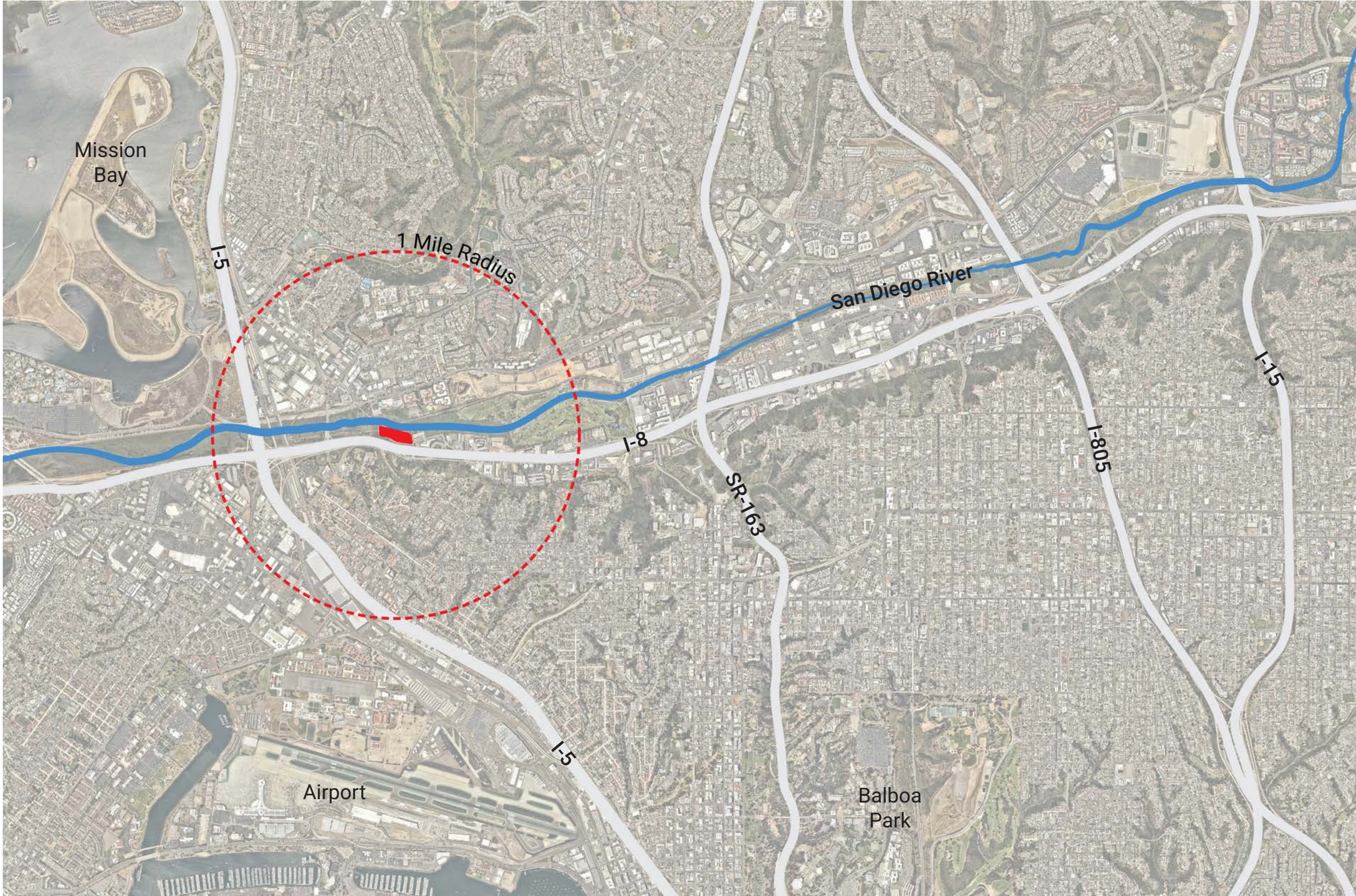


Stakeholders







Site Overview

Aerial Map




Legend

-  Site
-  San Diego River
-  Main Freeway Circulation

Not To Scale 

Vicinity Park Amenities



Not To Scale 

Legend

 Creek/River

 **Sefton Field Neighborhood Park**

- Baseball Field 50-60
- (3) Baseball Fields 90
- Multi-purpose room
- Softball Field

 **Silver Terrace Mini Park**

- Playground
- Tot Lot

 **Presidio Park**

- Basketball Court
- (2) Comfort Stations
- Softball
- Field Lighting
- Recreation Center

 **Edward Tyler Cramer Neighborhood Park**

- Tot Lot

 **Tecolote Community Park & Rec Center**

- (5) Baseball Field 50-60
- Comfort Station
- (2) Basketball
- Multi-purpose room
- Playground
- Recreation Center

 **Mission Hills Neighborhood Park**

- Comfort Station
- Multi-purpose room
- Playground
- Tennis Courts
- Tot Lot

 **Town and Country Neighborhood Park**

 **Mission Heights Neighborhood Park**

- Multi-Purpose room
- Playground
- Softball Field
- (1) Half Basketball Court

 **Carson Elementary**

- Multi-Purpose Field

 **Mission Bay Park**

- (4) Baseball Courts
- (28) Comfort Stations
- (11) Playgrounds

Site Overview

Park Views



1 Site Entry, Looking North/East



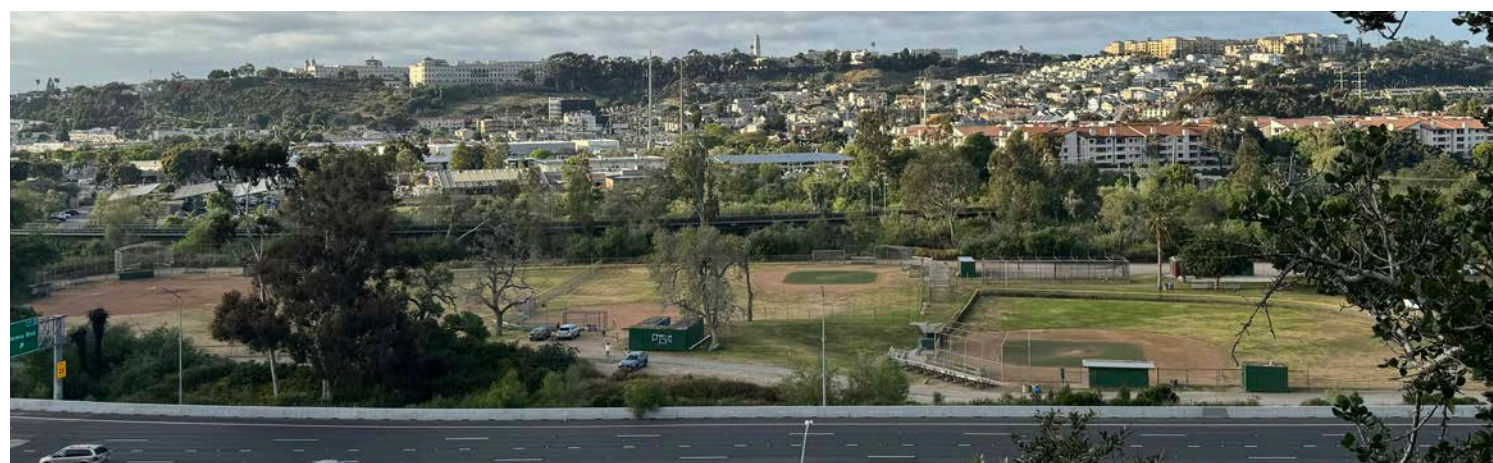
2 View West Along Intermediate Field



3 View North from Minors Field



4 View West into Trail from Juniors Field



5 Overall View to the North

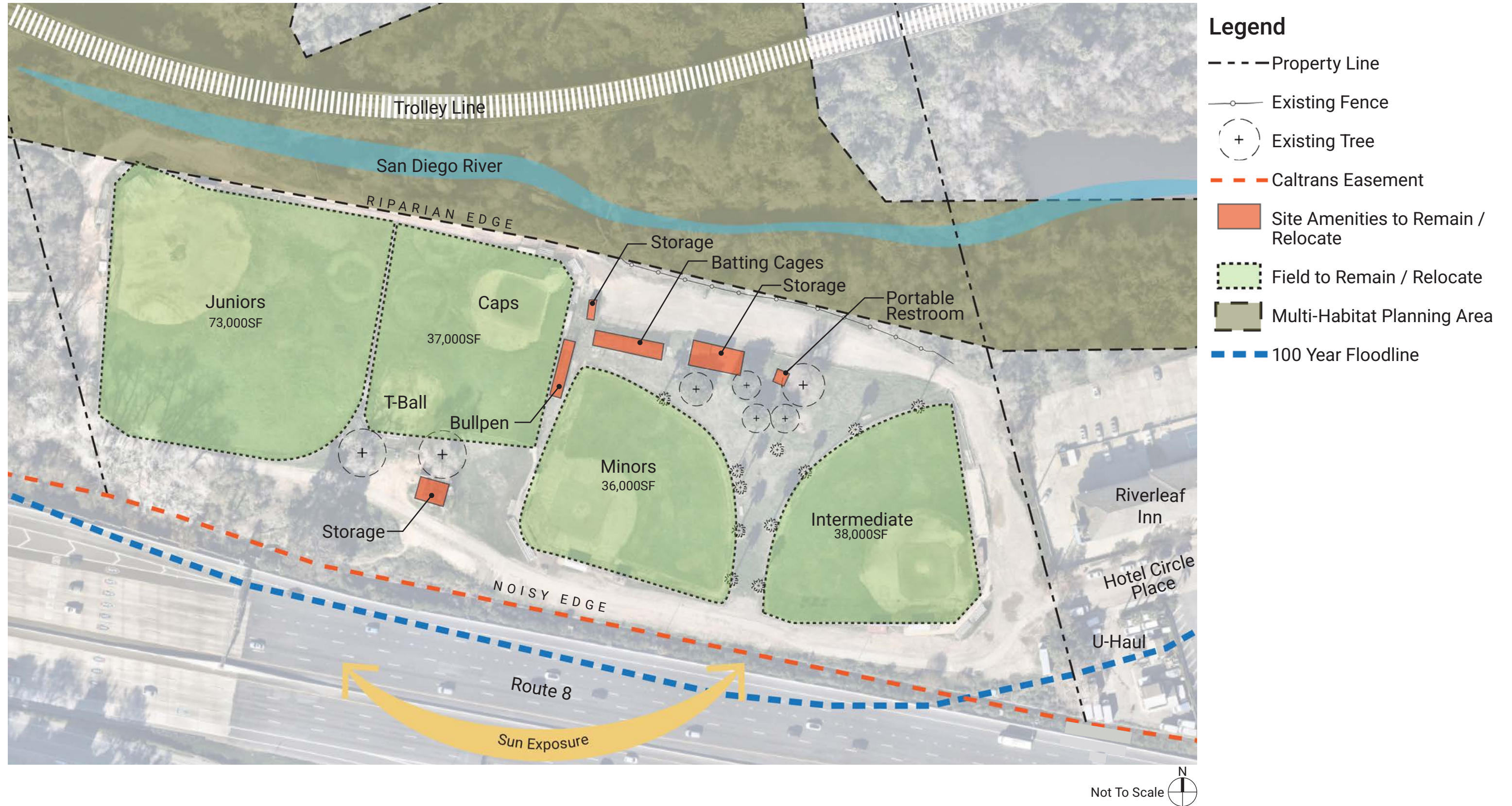


6 View East Along Intermediate Field



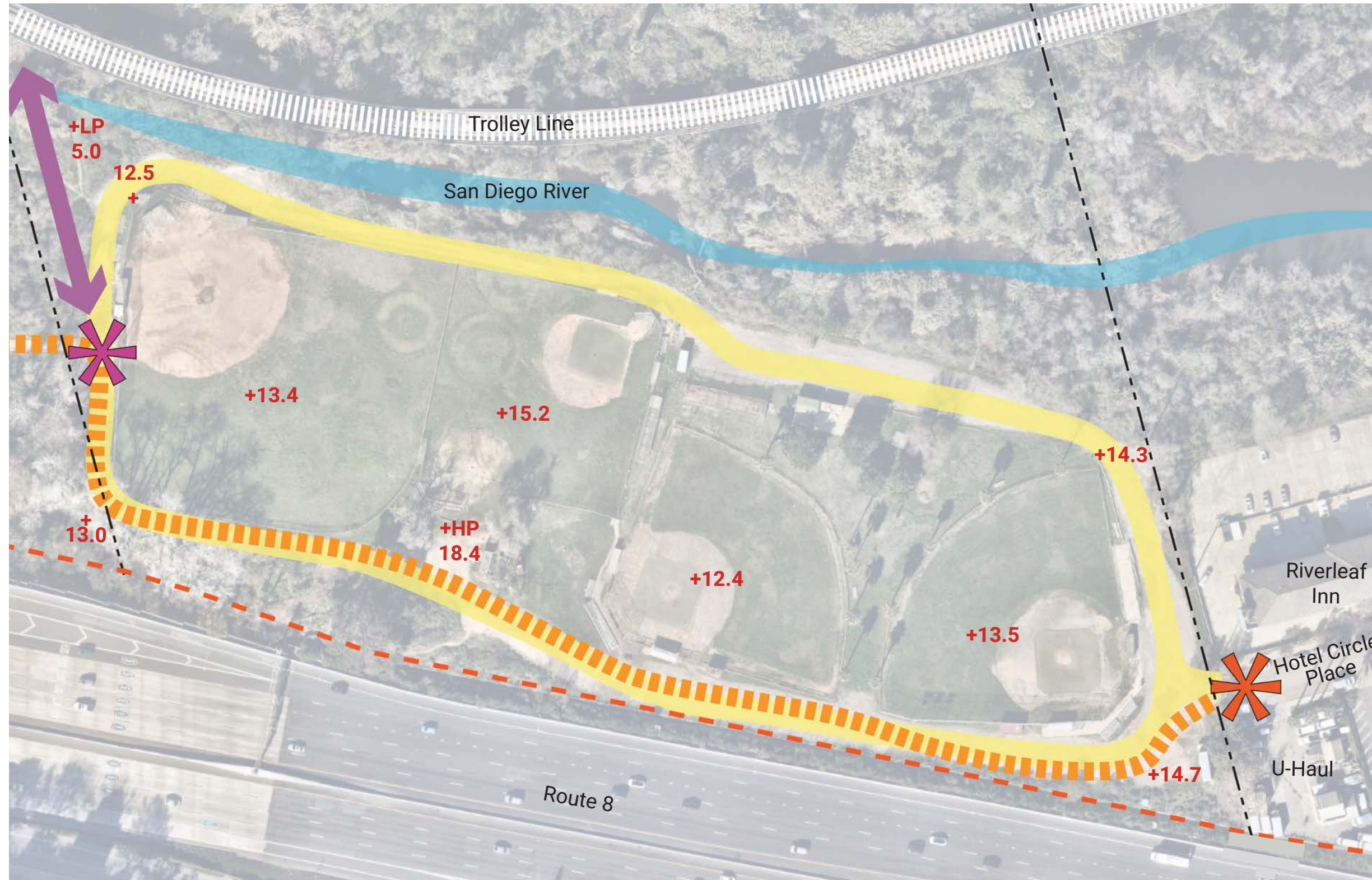
7 View West Along Intermediate Field

Existing Inventory



Site Overview

Existing Circulation



Legend

- - - Property Line
- - - Caltrans Easement
- San Diego River Bikeway
- Vehicular Circulation
- +13.5 Site Elevation
- Park Entry
- Connection to West River Valley Crossing
- Pedestrian Node

Not To Scale

Site History

Notable Years of Flooding 

1970

1978 

1980 

1992

2004

2012

2014

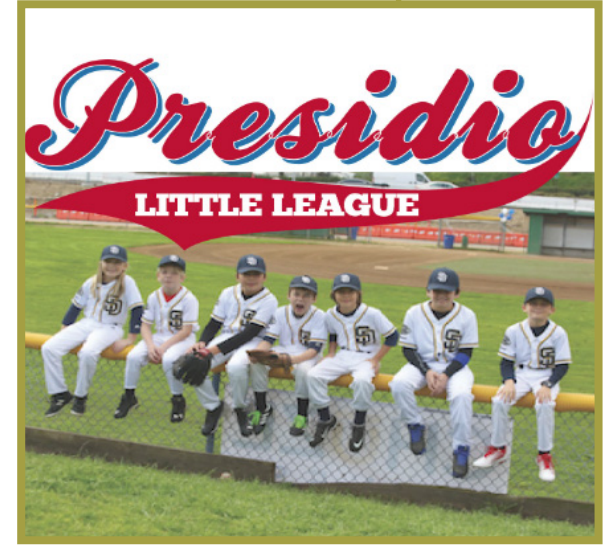
2017 

2022 

2024 



Presidio Little League is established



Presidio Minors Division wins District championship



Synthetic turf installed on three infields



"Little Padres" Park Program upgrades include new turf, irrigation system, scoreboard, fence and re-grading.



Flood: 1978



Bike Path Addition



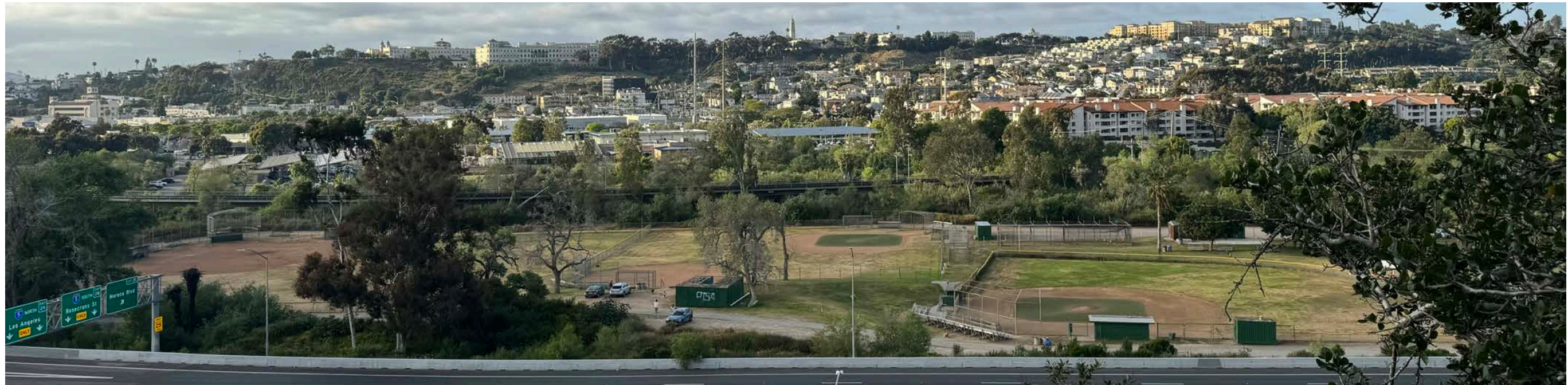
Flood: 2024

Opportunities

- Expand community utilization
- Increase overall park safety
- Enhance amenities for the existing baseball field
- Optimize space for additional amenities
- Enhanced pedestrian and bicycling experience
- Improve pedestrian connectivity to neighboring areas
- Upgrade park entry experience
- Organize vehicular circulation and parking
- Add educational signage for the San Diego River

Constraints

- Flood and drainage issues
- Noisy southern edge of site from the highway
- Limited space for additional amenity space
- Proposed development cannot impact the floodway, Caltrans easment or the Multi-Habitat Planning Area



Workshop #1 Exercises



What would you like to see at the park?





Next Steps

STEP 1

Community Planning Group Workshops #1
Programming Preferences



STEP 2

Community Planning Group Workshop #2
3 Concept Alternatives /
Community Input of Conceptual Alternatives



STEP 3

Community Planning Group Workshop #3
Preferred General Development Plan



STEP 4

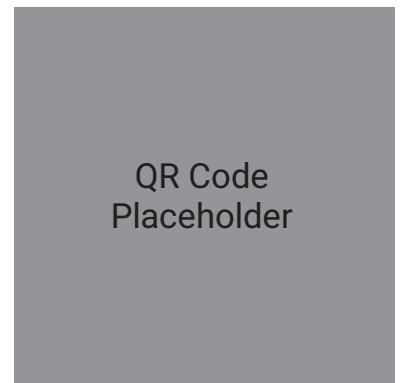
Environmental Review



STEP 5

Final General Development Plan /
Park and Recreation Board-Action Item

Scan the QR code
below to access
the Sefton Field
GDP website



Thank you

S P U R L O C K
Landscape Architecture
Urban Design +
Planning