

PARKS AND RECREATION BOARD MEETING

June 20, 2024

City of San Diego Park Ranger Program

Michael Ruiz, Chief Park Ranger
Erika Ferreira, Deputy Director
Parks & Recreation Department



Background and History

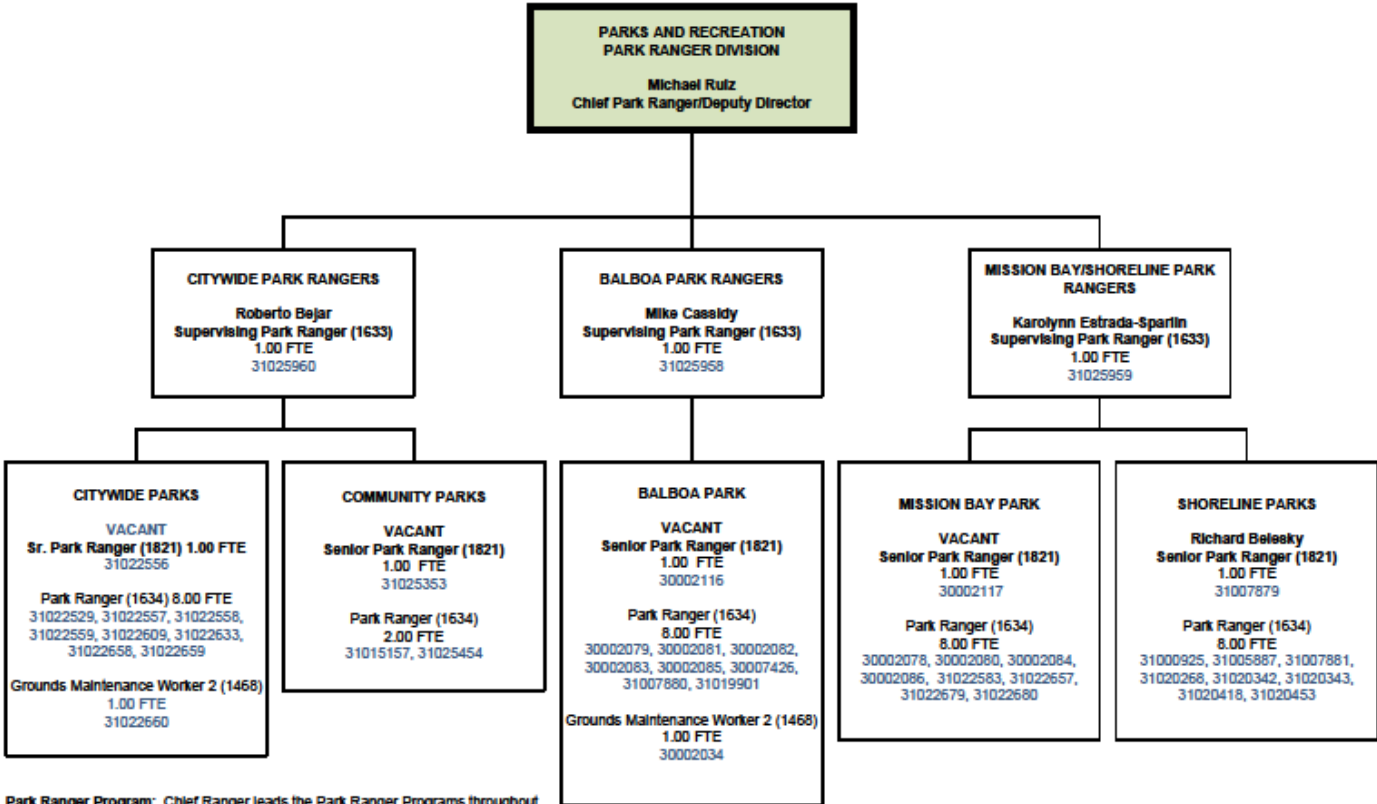
- The program started in 1989 with one Park Ranger at Mission Trails Regional Park.
- Now in 2024, there are 68 Rangers including 14 Senior Park Rangers & 54 Park Rangers.
- The Supervising Park Ranger classification was created in 2023 to bridge the supervision and management gap between the Chief Park Ranger and Senior Park Rangers. The new Supervising Park Rangers began on June 8th.
- The increase in Park Rangers has allowed expansion into Community Parks with education, community outreach, habitat restoration, and resource protection in our community parks.
- Park Rangers are responsible for resource protection within Parks. Resource Management evolved out of the City's need to protect and conserve rare and endemic species, and the 1997 voter-approved Multiple Species Conservation Program (MSCP) and enforced by multiple agencies, including U.S. Fish and Wildlife Service and the California Department of Fish and Wildlife.



Organization Chart

**PARKS AND RECREATION
PARK RANGER DIVISION
ORGANIZATION CHART
Updated June 2024**

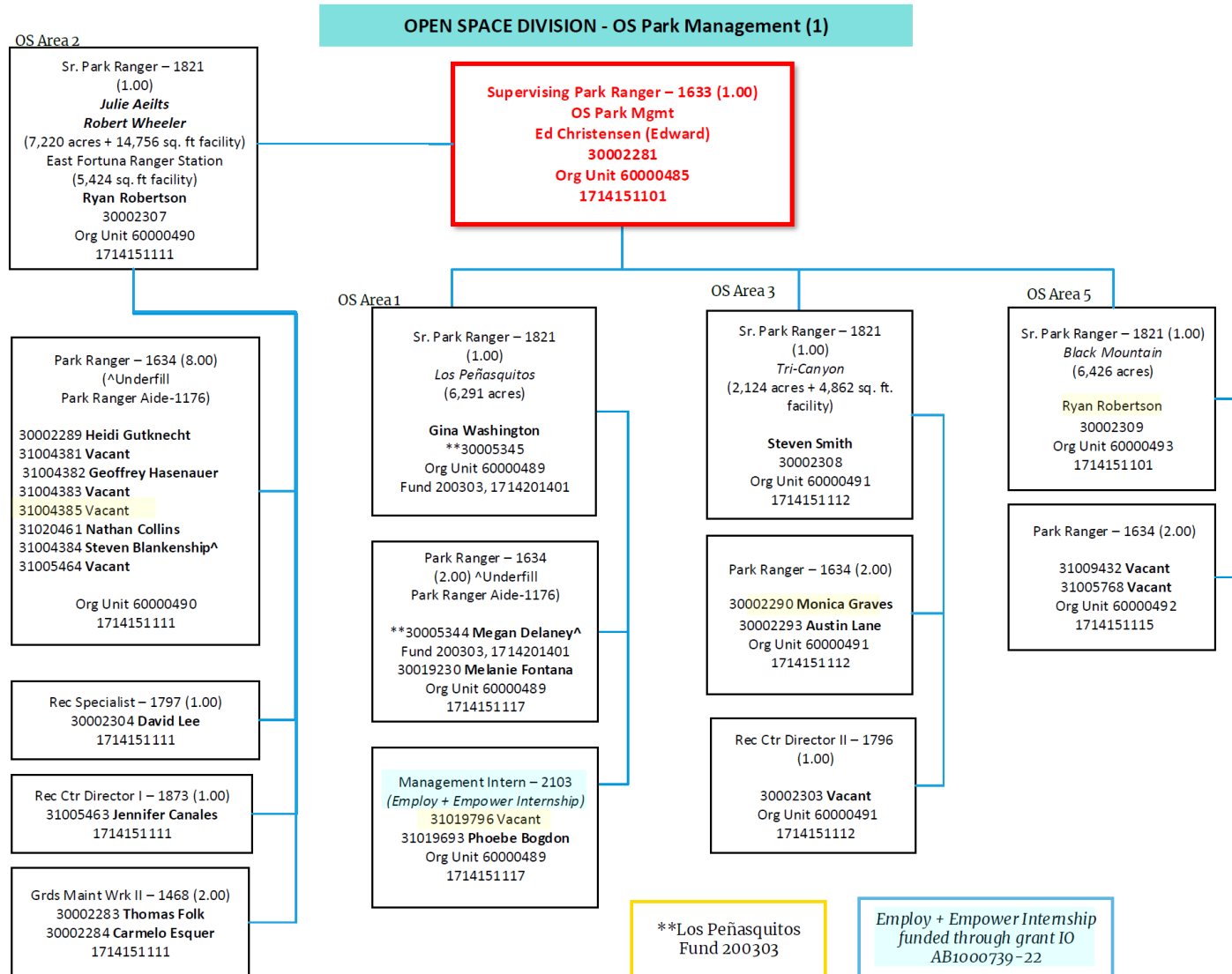
Summary
Budgeted FTE: 45.50
Standard Hour FTE: 45.00



Park Ranger Program: Chief Ranger leads the Park Ranger Programs throughout the department. Currently includes administration education, interpretation, natural resource management, natural resource protection, and operations in our beach and bay, regional parks (Mission Bay Park, Balboa Park, Presidio Park, Chicano Park, various Community Parks, Downtown, and Shoreline Parks which includes the operation of Children's Pool and La Jolla Cove.)

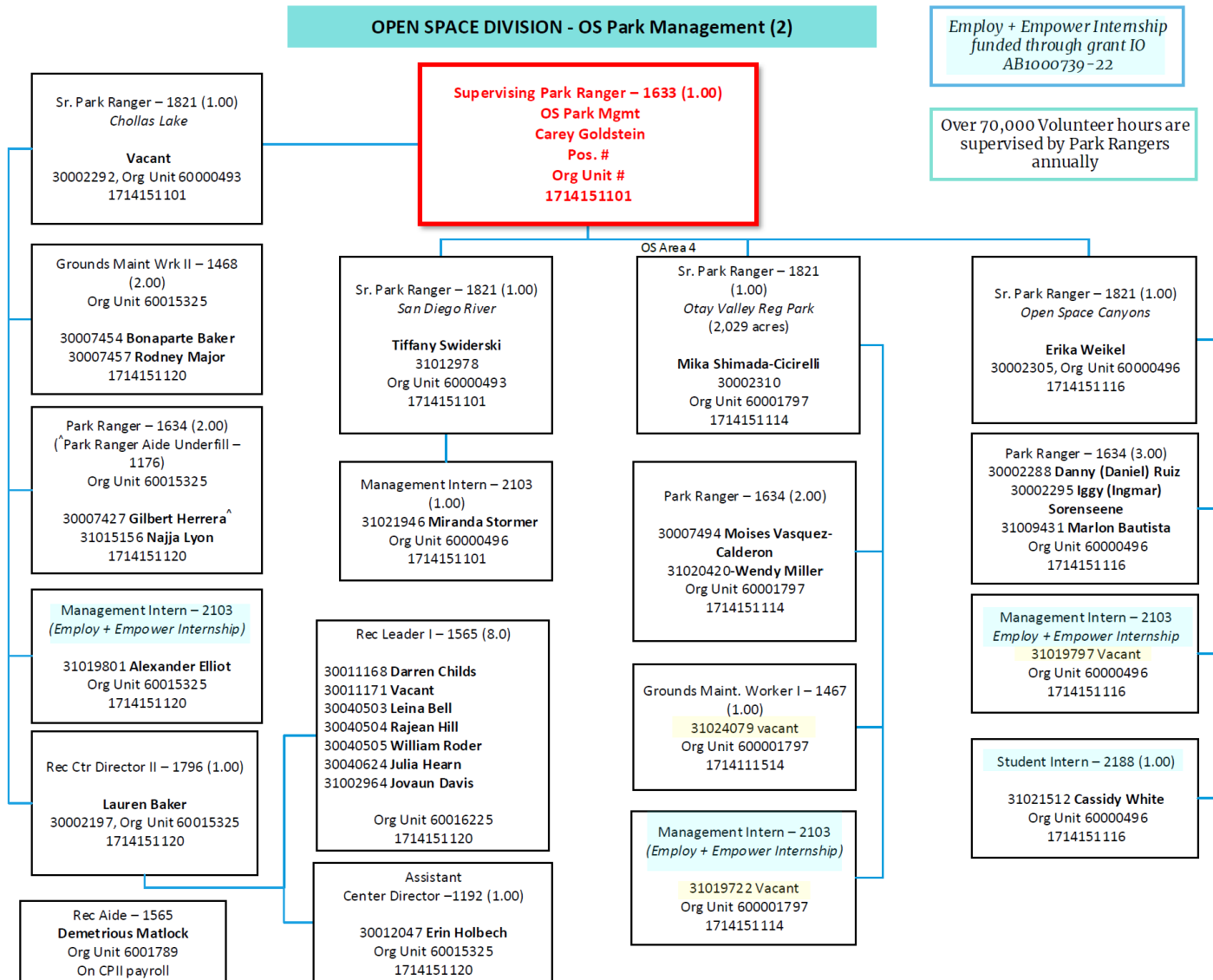


Organization Chart





Organization Chart



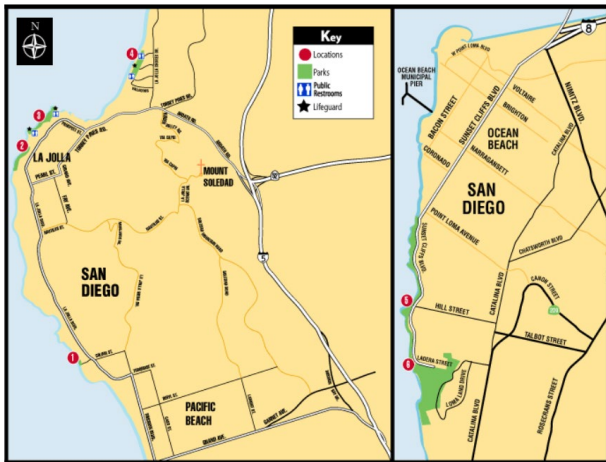
Open Space



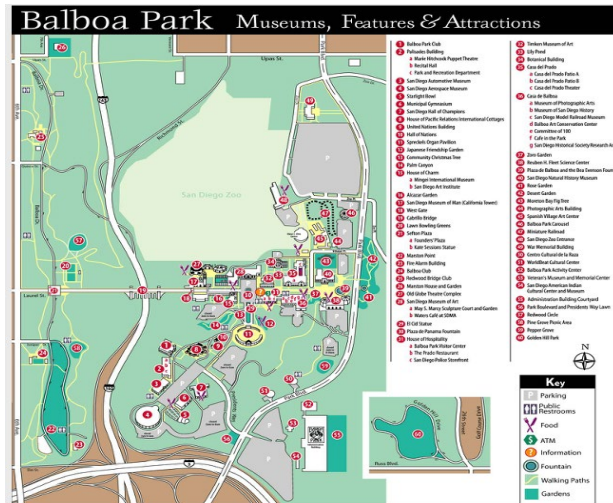
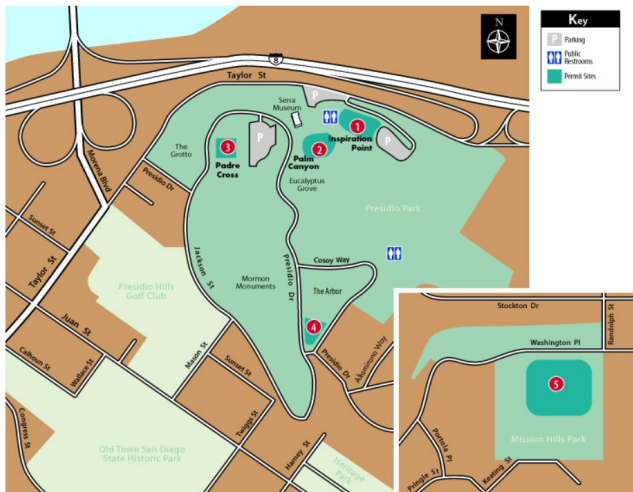
Open Space Parks and Canyons

- 30,000 Acres
- 227 Miles of hiking trails
- Includes environmentally sensitive lands, habitat areas, other conserved lands

Regional Parks

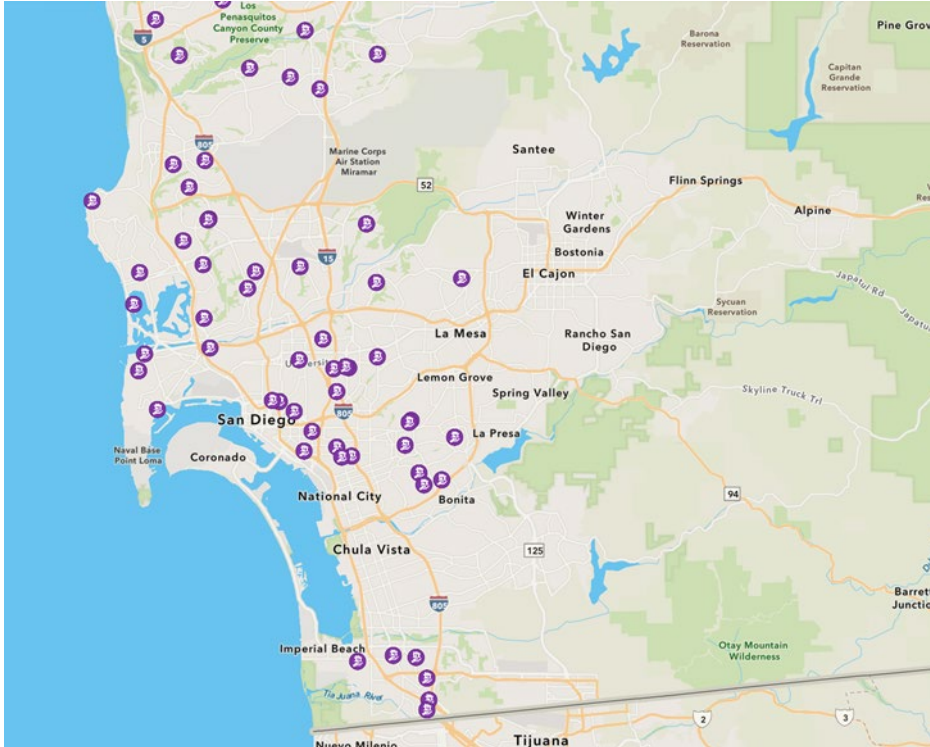


Shoreline Parks,
Mission Bay Park,
Presidio Park, and
Balboa Park



- 5,457 Acres
- 13 Miles of Coastline

Community Parks

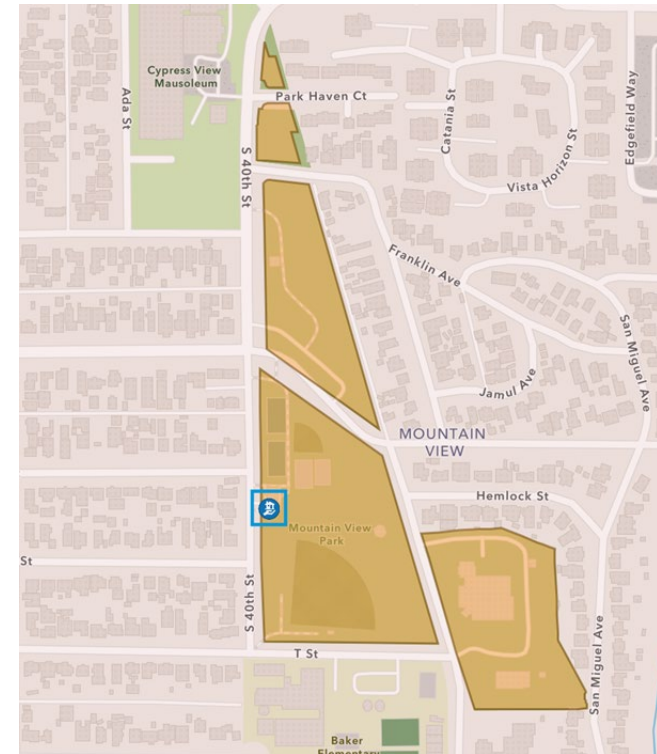
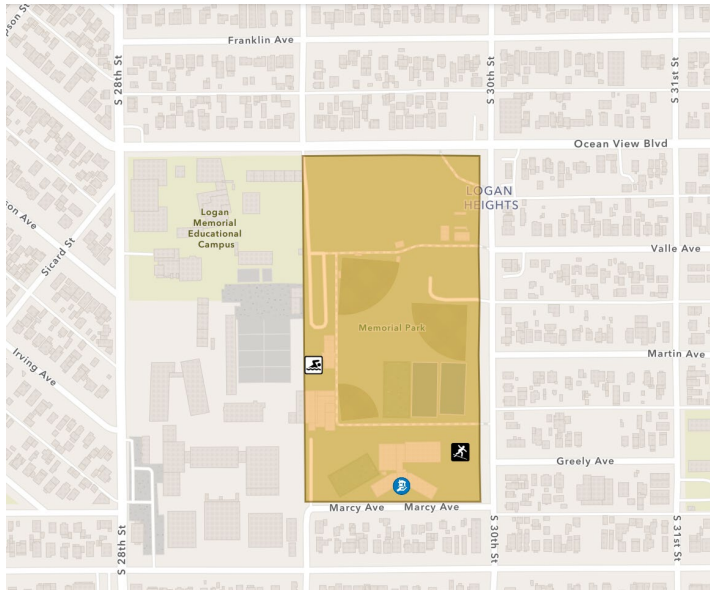


Recreation and Neighborhood Parks

Park Rangers are currently visiting over 20 Community Park locations weekly.

- Charles Lewis II Memorial Park
- Chollas Lake Park
- Chicano Park
- Children's Park
- Colina Del La Cruz Recreation Center
- Dorothy Petway Neighborhood Park
- Encanto Recreation Center
- Hollywood Neighborhood Park
- Kate Sessions Memorial Park
- Linda Vista Community Park
- Marie Widman Memorial Park
- Martin Luther King Jr. Promenade
- Mira Mesa Community Park
- Montclair Neighborhood Park
- Montgomery Waller Community Park
- Mountain View Community Park
- Pantoja Park
- Paradise Hills Community Park
- Park Del La Cruz Recreation Center
- Silver Wing Recreation Center
- Southcrest Community Park & Trails
- Willie Henderson Sports Complex

Community Parks Additions



Pending the hiring process, the Department will begin staffing at Memorial and Mountain View Community Parks.

- 1 – Senior Park Ranger
- 2 – Park Rangers

2024 Storm Response

- 225 Parks and Recreation personnel supported the sandbag distribution
- 57,940 sandbags were distributed
- Park Rangers worked at the distribution and donation sites throughout the storm



Primary Duties

- Education, Interpretation, and Community Outreach
- Natural Resource Management
- First Responders
- Natural Resource Protection

Education, Interpretation and Outreach



Education, Interpretation, and Outreach

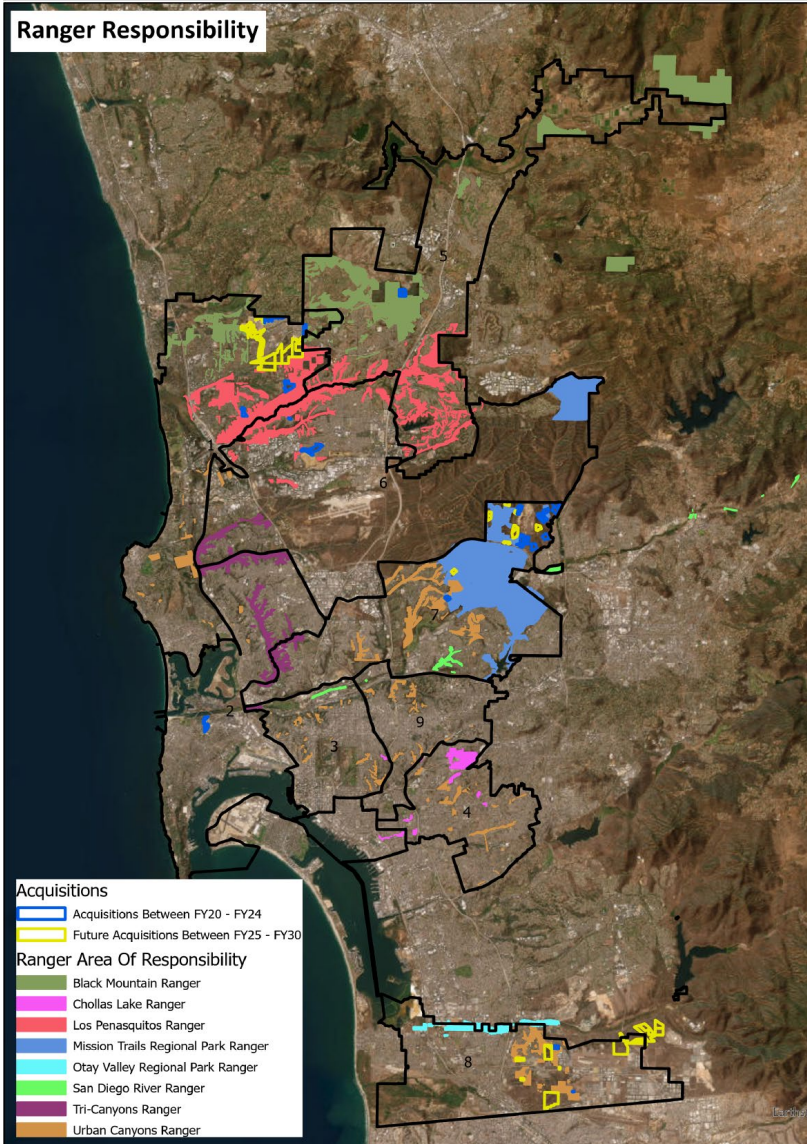
Park Rangers provide hundreds of educational and interpretative programs throughout the year including:

- Nature Walks, Historic Tours, Educational Booths, Environmental Education for Schools and Colleges
- Park Ambassador, Park After Dark, Canyon Connections, Outdoor Explore, Bark in the Barrio, Canyon Days, and Eagle Scout projects

Community Outreach:

- 1375 Volunteers in 2023 with 9306 volunteer hours
- Miles of trail maintenance projects and acres of native habitat restoration
- 81,644 Lbs. removed from the San Diego River

Natural Resource Management



Natural Resource Management

- **Park Rangers and other resource management staffing obligations are to fulfill federal and state monitoring, and natural resource management requirements including:**
 - Multiple Species Conservation Program (MSCP)
 - Vernal Pool Habitat Conservation Plan (VPHCP)
 - Natural Resources Management Plans (NRMP's)
- **Resource Management supports:**
 - Workforce development for implementation of Climate Resilient SD Plan
 - Climate Action Implementation Plan (CAP)
 - Coastal Resiliency Plan
 - Citywide Trails Master Plan
 - The Parks and Recreation Department Master Plan
 - 43 Vernal Pools which includes over 950 individual pools
 - Over 1,500 threatened plant and animal species, including 368 rare and 140 endangered species in San Diego

Natural Resource Management

Acquisition of Conserved Land:

- FY20-FY24 Total Acquisitions = 563 acres (CD 1, 2, 5, 6, 7 and 8)
- FY25-FY30 Projected Acquisitions = 1367 acres (CD 1, 7 and 8)

Endowments for Land Management:

- Current endowments total = \$3.7 million
- Projected endowments in the next five years = \$2.7 million

Staffing Levels: Industry Standard Acres vs Park Ranger Ratio

- One Park Ranger for every 648 acres
 - Current Open Space Park Ranger Ratio: 28 Rangers/27,000 acres = 964 acres
 - Adding six Open Space Park Rangers: 34 Rangers/27,000 acres = 794 acres

Natural Resource Management

Additions to the Open Space Natural Resource Management Program:

- Addition of 4.00 positions for Los Penasquitos Open Space:
 - 1.00 Environmental Biologist
 - 1.00 GIS Analyst II
 - 1.00 Associate Management Analyst
 - 1.00 Park Ranger
- Addition of 3.00 positions for Multi-Habitat Planning Areas (MHPA) including Famosa Slough
 - 1.00 Park Ranger
 - 1.00 Biologist III
 - 1.00 Grounds Maintenance Worker II
- Addition of 2.00 positions for Otay Mesa and East Elliot Open Space:
 - 1.00 Park Ranger
 - 1.00 Biologist III
- Addition of 3.00 Park Rangers associated with operations and maintenance of the San Diego River Park.

First Responders

- Medical
- Rescues
- Fire Suppression



First Responders

- **Medical/Rescues:**

- Over 40 medical responses including injuries, CPR, heat exhaustion, snake bites, mountain bike crashes and vehicle accidents in Parks.

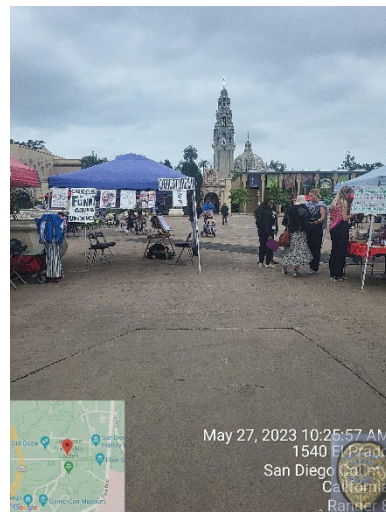
- **Fire Suppression:**

- Full range of small illegal campfires to assisting on larger brush fires in canyons and open space.

- **Multi-agency Coordination:**

- Fire, Paramedics, Police, Neighborhood Policing Unit, Lifeguards, Environmental Services, PATH, US Fish & Wildlife, CalFire, CA State Parks, CA Fish & Game, County of SD, City of Chula Vista, SD Humane & wildlife releases.

Natural Resource Protection



Levels of Enforcement

- **Violent Crimes, Weapons & Drugs**
- **Violations of Park Muni Codes**
Quality of Life Crimes & Resource Protection
- **Witness & Reporting Party**



Preserve & Protect the natural, historic, and cultural resources of our Parks.



Thank you