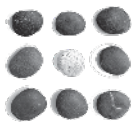


GDP AMENDMENT MEETING

**CITY OF SAN DIEGO PARKS AND RECREATION BOARD
EMERALD HILLS NEIGHBORHOOD PARK**

JUNE 20, 2024



**SCHMIDT
DESIGN
GROUP**





INTRODUCTIONS

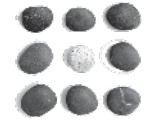
City of San Diego

- Engineering & Capital Projects Department
 - Darren Genova
 - Ling Chan
 - Nathan Audo
- Parks and Recreation Department
 - Shamli Tarbell
 - Charles Daniels

Schmidt Design Group, Inc., Landscape Architect

- Jeff Justus, Principal
- Rudy Perez, Project Manager

- **Summary of Community Feedback**
 - MLK CRG Meeting #1 February 18th, 2021
 - EHNC Meeting March 9th, 2021
 - MLK CRG Meeting #2 June 17th, 2021
 - MLK CRG Meeting #3 August 19th, 2021
- **Summary of Environmental Review Process**
- **Draft General Development Plan Amendment**
- **Discussion**



SCHMIDT
DESIGN
GROUP

SUMMARY OF COMMUNITY FEEDBACK

EMERALD HILLS NEIGHBORHOOD PARK



COMMUNITY MTG #1 SUMMARY

Martin Luther King Jr. Community Recreation Group Meeting #1,
February 18, 2021

- Reviewed site opportunities and constraints
- Presented two alternatives with various amenities

Alternative 1



Alternative 2

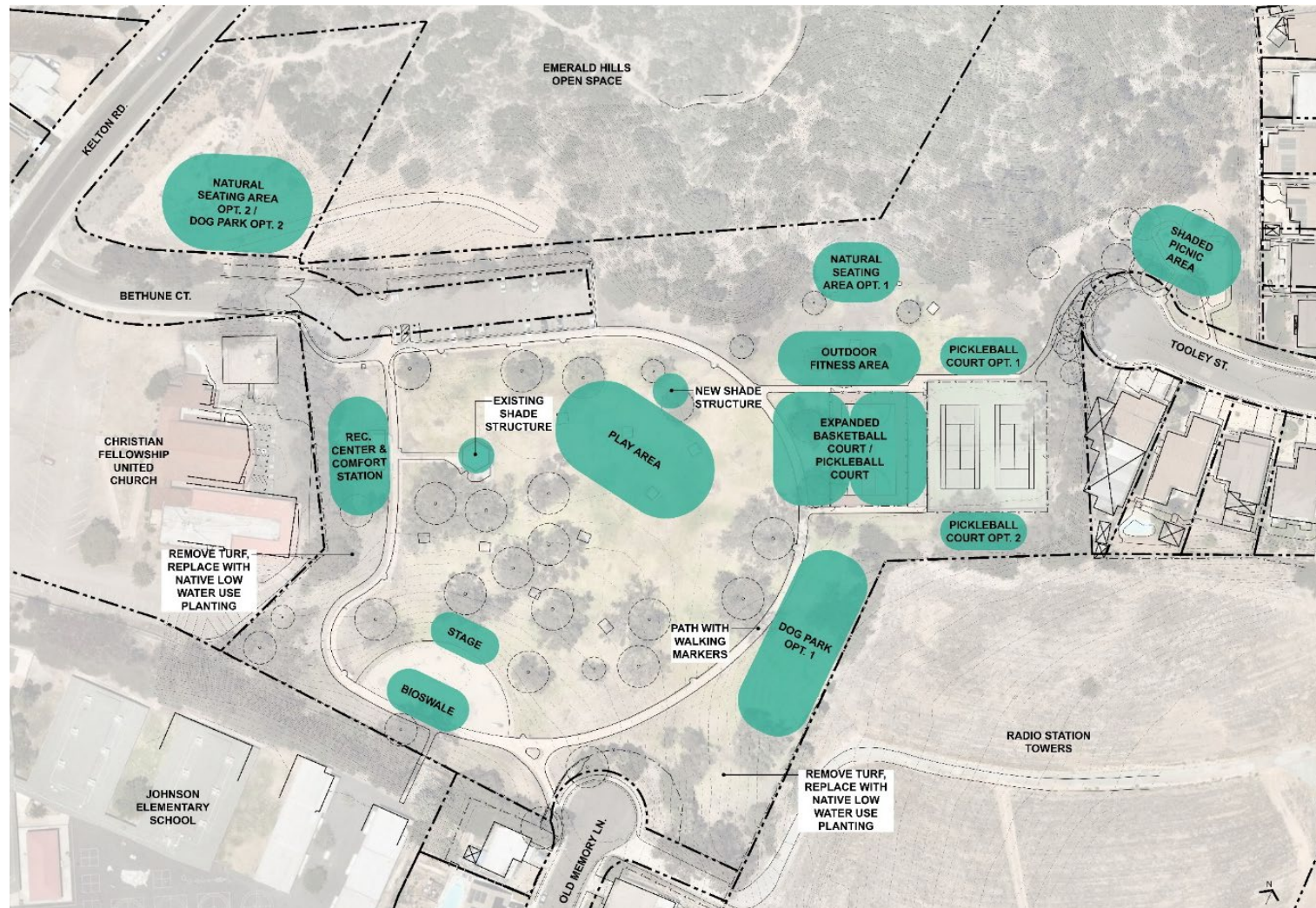


What We Heard

- Alternative 2 was commonly preferred
 - Request for historical and cultural aspects to be incorporated into park
 - Request for multi use of tennis courts
- Request for additional amenities to be included into preferred alternative
 - Outdoor fitness, dog park, additional shade structure
 - Request to replace existing restroom with new facility

Emerald Hills Neighborhood Council (EHNC) Meeting,
March 9, 2021

- Reviewed feedback from previous MLK CRG community meeting
- Presented Programming Exhibit



What We Heard

- Craftsman-style shade structure
- Walking distance markers
- Additional basketball court
- A place to display history and art
- Natural seating area at trail entrance near corner of Kelton/Bethune
- Indoor soccer/futsal
- Solar
- Exercise equipment
- Security Lighting
- No pickleball
- Rec center: game room, programming including basketball, soccer, tennis
- Link the school and the park
- No play areas adjacent to open space



COMMUNITY MTG #2 SUMMARY

Martin Luther King Jr. Community Recreation Group Meeting #2,
June 17, 2021

- Reviewed feedback from previous MLK CRG meeting and EHNC meeting
- Presented Draft GDP Amendment



What We Heard

- Overall positive feedback on design
- Liked expansion from 1 to 2 basketball courts
- Rec Center
 - Would like to have game room, office space, meeting space
- Add small dog park



COMMUNITY MTG #3 SUMMARY

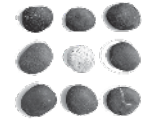
Martin Luther King Jr. Community Recreation Group Meeting #3,
August 19, 2021

- Reviewed feedback from previous meetings
- Presented Revised Draft GDP Amendment
- CRG Approval



GDP Amendment Approval

- Moved/Seconded by MLK JR. CRG Board (E. Smith/M. Abraham) to approve GDP Amendment as presented



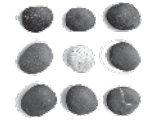
SCHMIDT
DESIGN
GROUP

SUMMARY OF ENVIRONMENTAL REVIEW PROCESS

EMERALD HILLS NEIGHBORHOOD PARK



- Draft Technical Reports – March, 2022
- Revised Technical Reports – January, 2023
- Draft Mitigated Negative Declaration – December, 2023
- 15162 Consistency Memo – April, 2024



SCHMIDT
DESIGN
GROUP

DRAFT GDP AMENDMENT

EMERALD HILLS NEIGHBORHOOD PARK

DRAFT GDP AMENDMENT



LEGEND

- 1 Recreation Center and Comfort Station
- 2 Children's Play Area
- 3 Outdoor Fitness Area
- 4 Basketball Courts, With Option for Multiple Sport Striping
- 5 Existing Tennis Courts to Remain, With Option for Multiple Sport Striping
- 6 Shaded Picnic Area
- 7 Natural Seating Area
- 8A Dog Park - Large Dogs
- 8B Dog Park - Small Dogs
- 9 Stage with Enhanced Concrete
- 10 Biofiltration Basin, Typ. (Potential Locations Shown)
- 11 ADA Parking
- 12 Cultural Element Plaza with Enhanced Concrete
- 13 24' Wide Shade Structure
- 14 28' Wide Shade Structure
- 15 Interpretive Trail head Sign
- 16 Permeable AC Trail
- 17 Retaining Wall and Guardrail at AC Trail
- 18 Native Planting, Typ.
- 19 Picnic Tables, Typ.
- 20 Benches, Typ.
- 21 10' HT. Chain link Fence at Courts
- 22 5' HT. Tubular Steel Fence with 16" Mow Curb
- 23 12' Wide Maintenance Gate, Typ.
- 24 Standard Concrete Loop Path With Distance Markers
- 25 Stairs With Handrails
- 26 Drinking Fountain, Typ.
- 27 Existing Chain link Fence at Tennis Courts to Remain, Typ. New Green Screen Mesh to be Installed at Existing Tennis Court Fence, Where Adjacent to Dog Park for Small Dogs
- 28 Pedestrian Pole Light, Typ.
- 29 Existing Trail head Stairs to Remain
- 30 Existing Picnic Table on Concrete Pad to Remain, Typ.
- 31 Removable Bollards
- 32 Standard Low Water Ornamental Planting, Typ.
- 33 Mulch Groundcover with Low Water Ornamental Planting - 15% of Area, Typ.
- 34 Decomposed Granite or Gravel Maintenance Access Road
- 35 Park Monument Sign
- 36 Trash and Recycling Bins, Typ.
- 37 Bicycle Rack

Recreation Center / Comfort Station

DRAFT GDP AMENDMENT



Recreation Center / Comfort Station

DRAFT GDP AMENDMENT

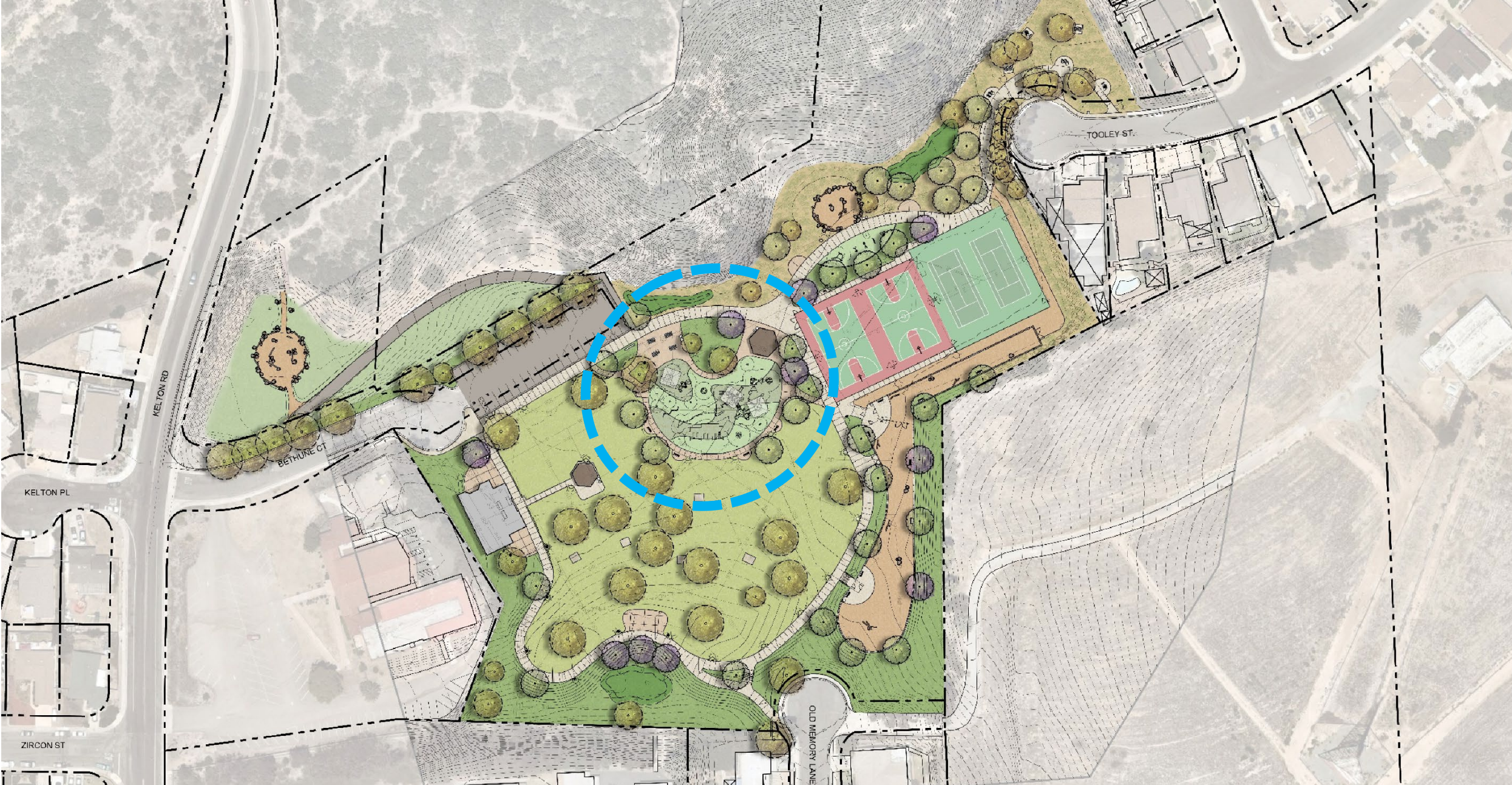


Rec Center Amenities

- Men & Women Restrooms
- Meeting/Game Room(s)
- Office/Checkout Room
- Storage

Children's Playground

DRAFT GDP AMENDMENT

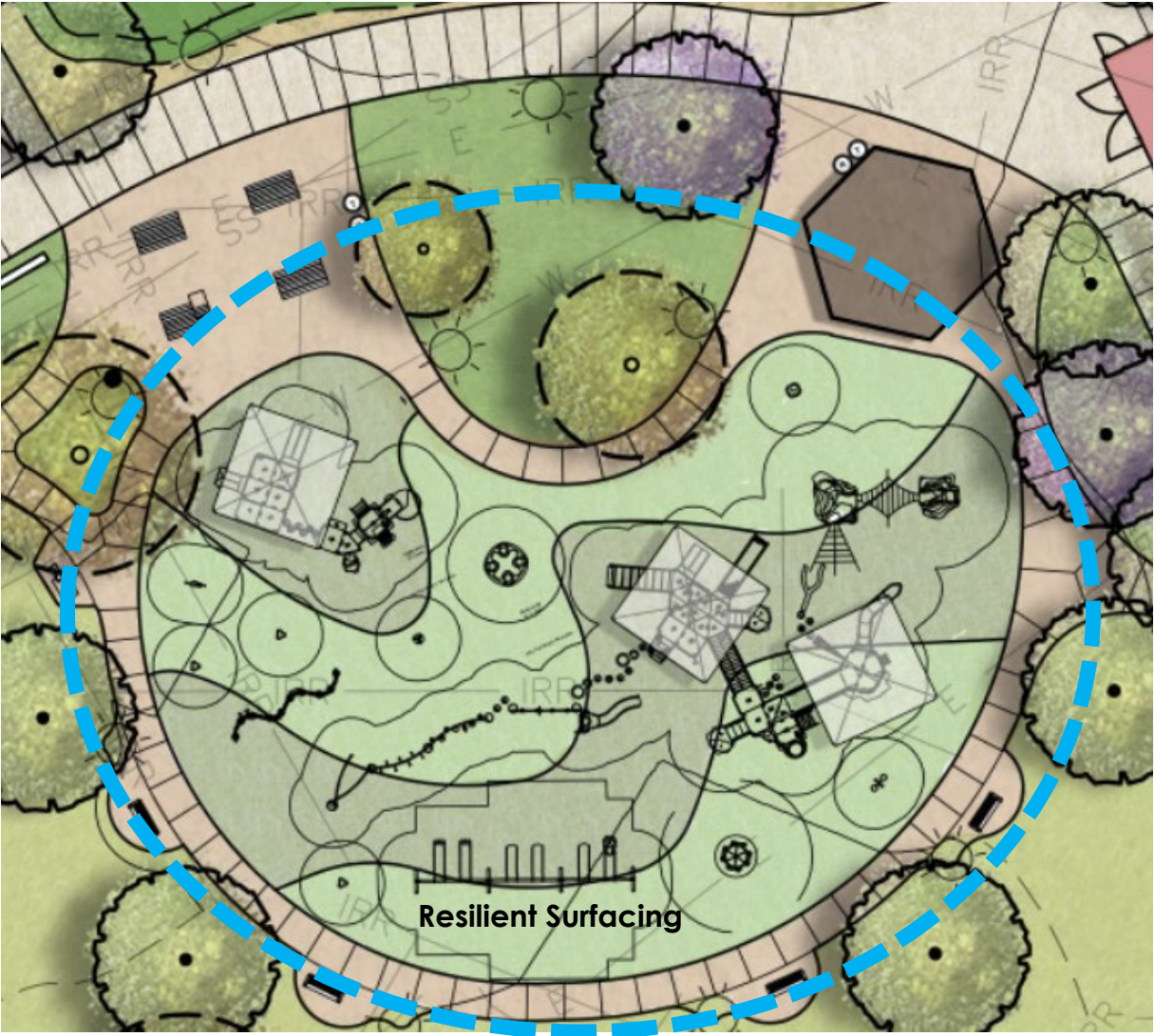


Children's Playground

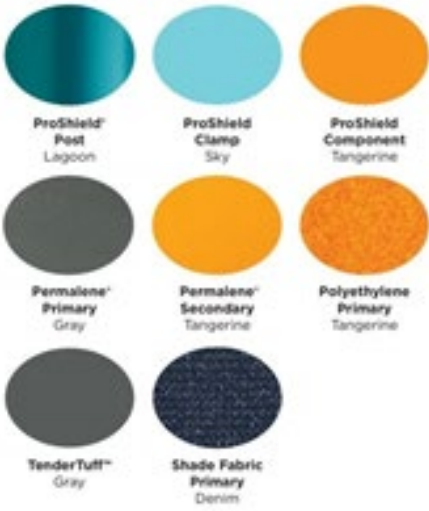
DRAFT GDP AMENDMENT



Children's Playground



DRAFT GDP AMENDMENT

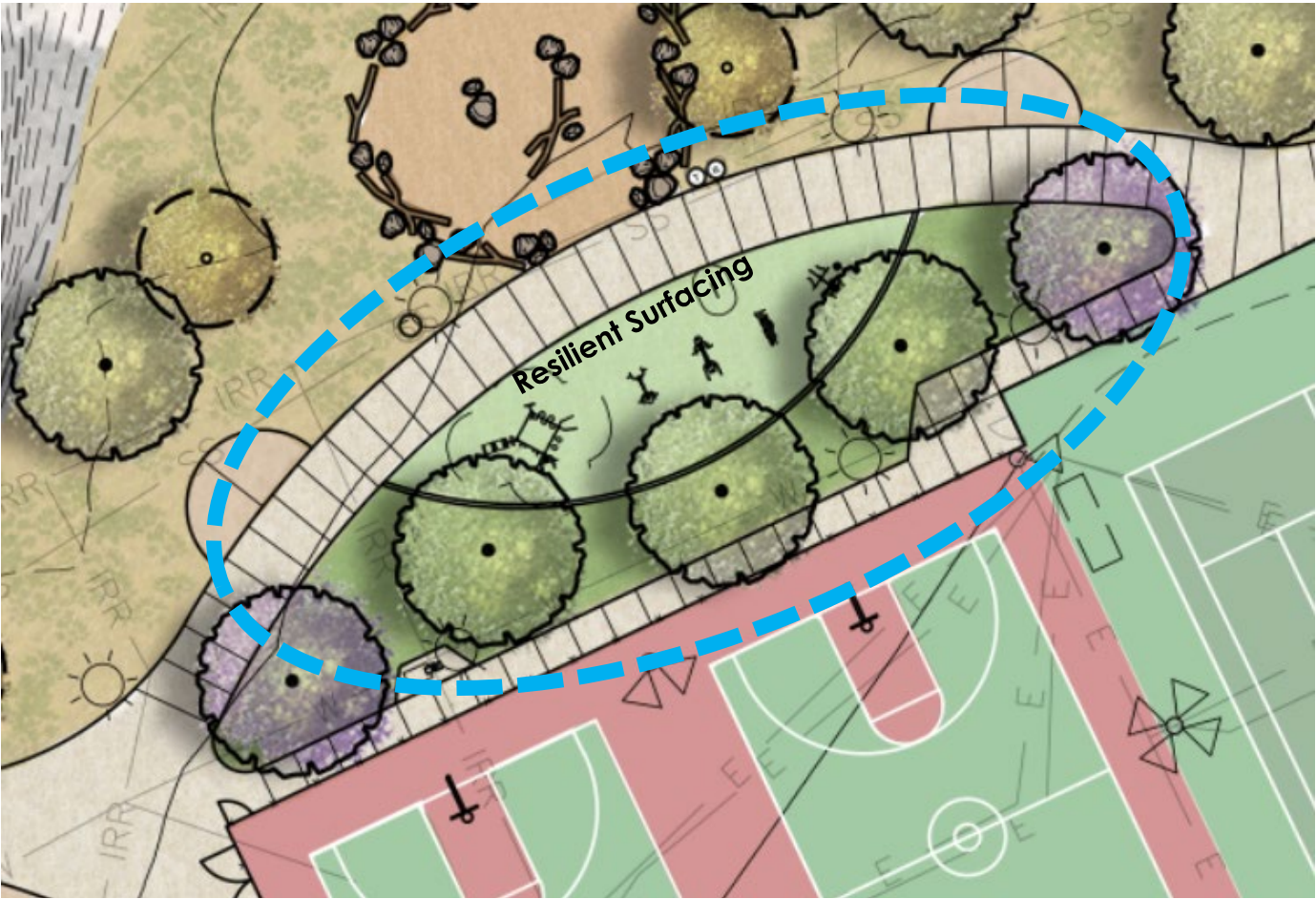


Outdoor Fitness

DRAFT GDP AMENDMENT



Outdoor Fitness



DRAFT GDP AMENDMENT



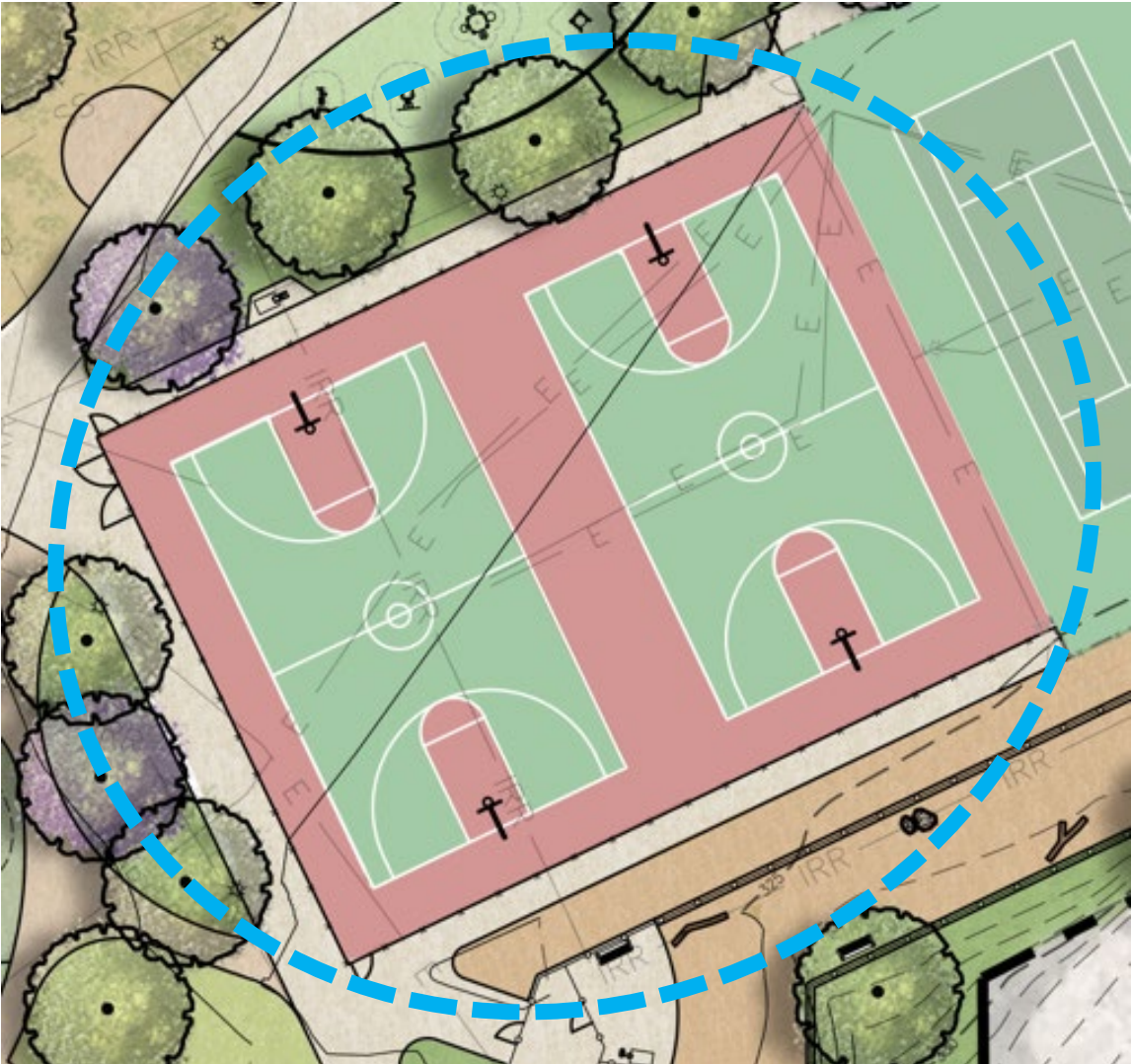
Basketball Courts

DRAFT GDP AMENDMENT



Basketball Courts

DRAFT GDP AMENDMENT



Option to include multiple sport striping, including futsal

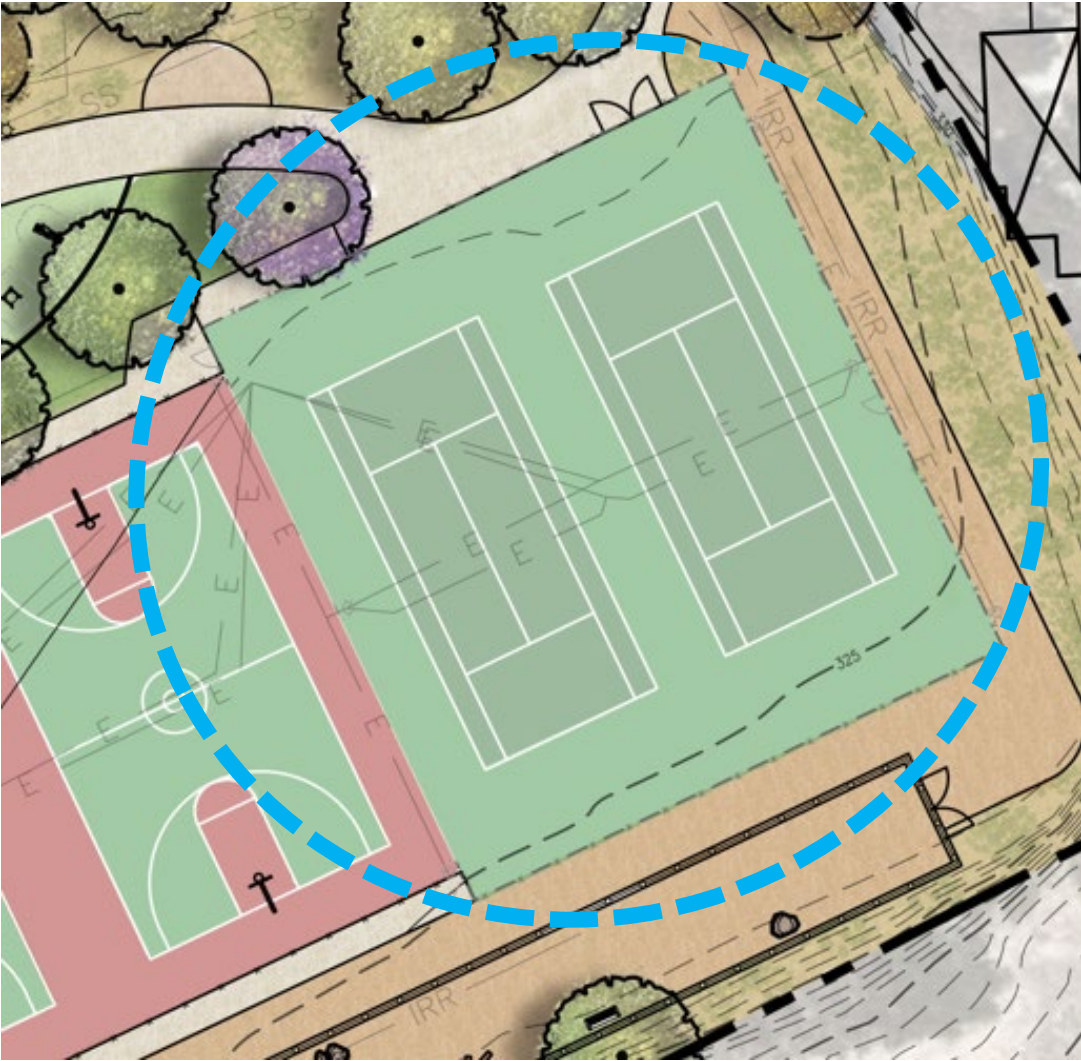
Existing Tennis Courts

DRAFT GDP AMENDMENT



Existing Tennis Courts

DRAFT GDP AMENDMENT



Option to include multiple sport striping, including pickleball

Shaded Picnic Area

DRAFT GDP AMENDMENT



Shaded Picnic Area

DRAFT GDP AMENDMENT



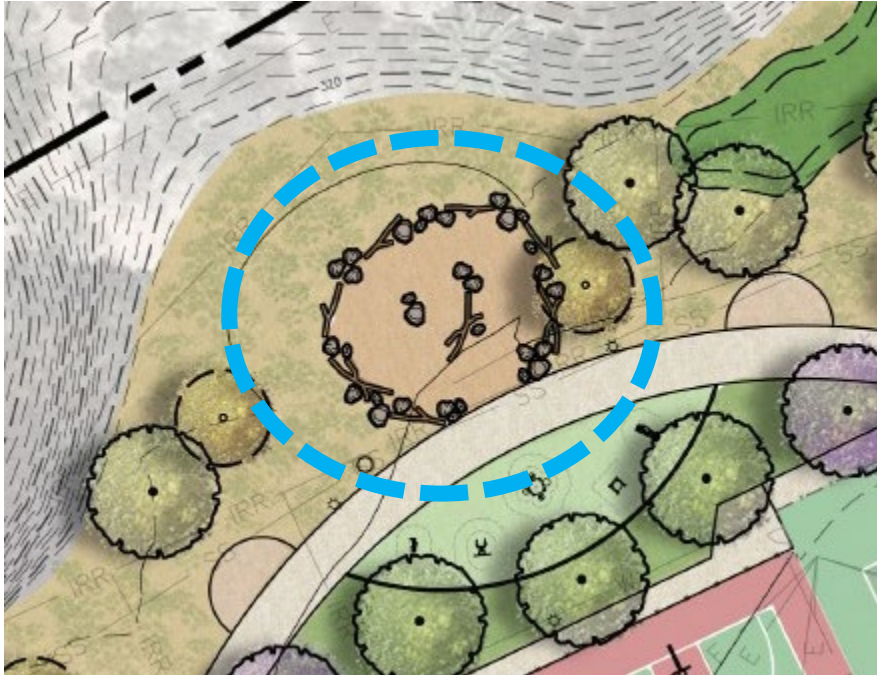
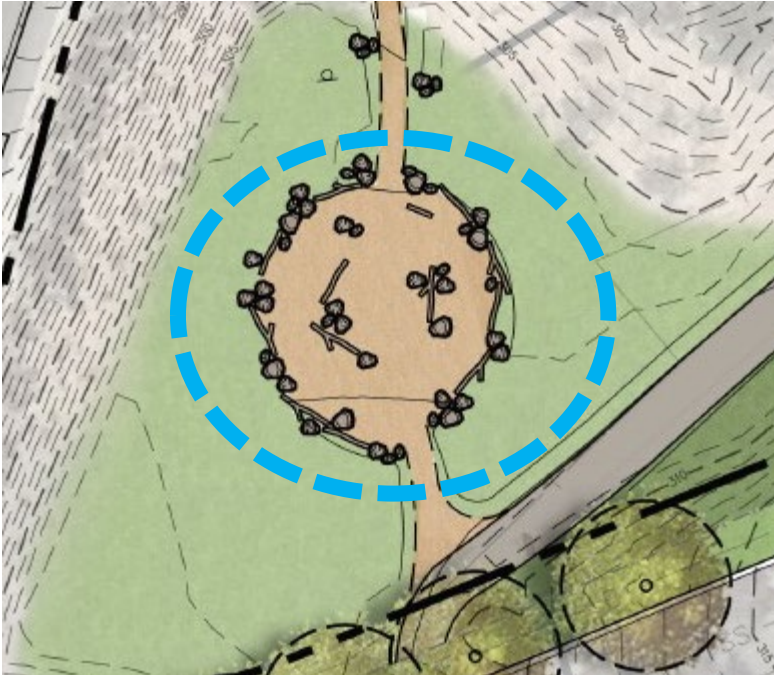
Nature Exploration Areas

DRAFT GDP AMENDMENT



Nature Exploration Areas

DRAFT GDP AMENDMENT



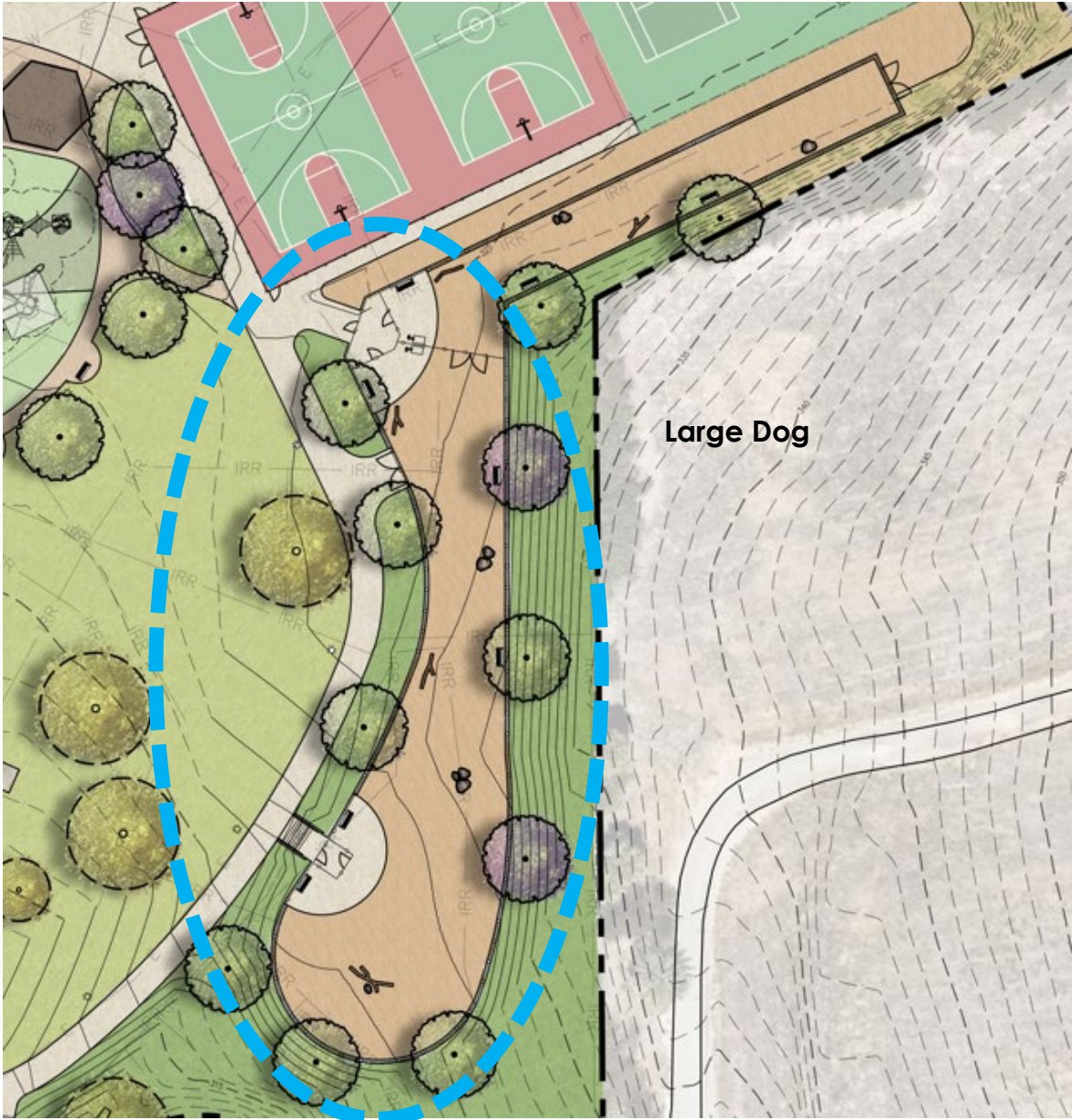
Dog Park

DRAFT GDP AMENDMENT



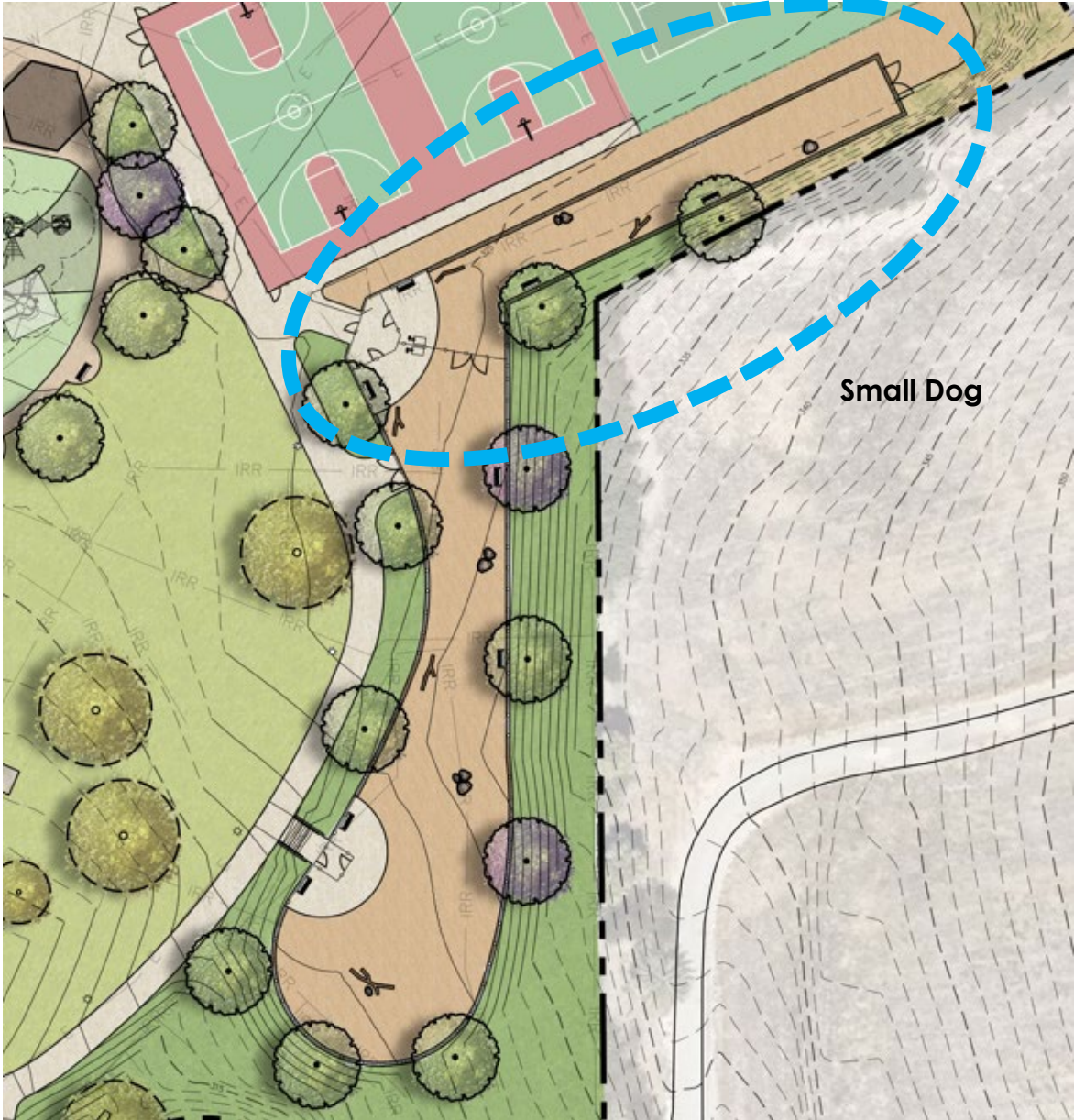
Dog Park

DRAFT GDP AMENDMENT



Dog Park

DRAFT GDP AMENDMENT



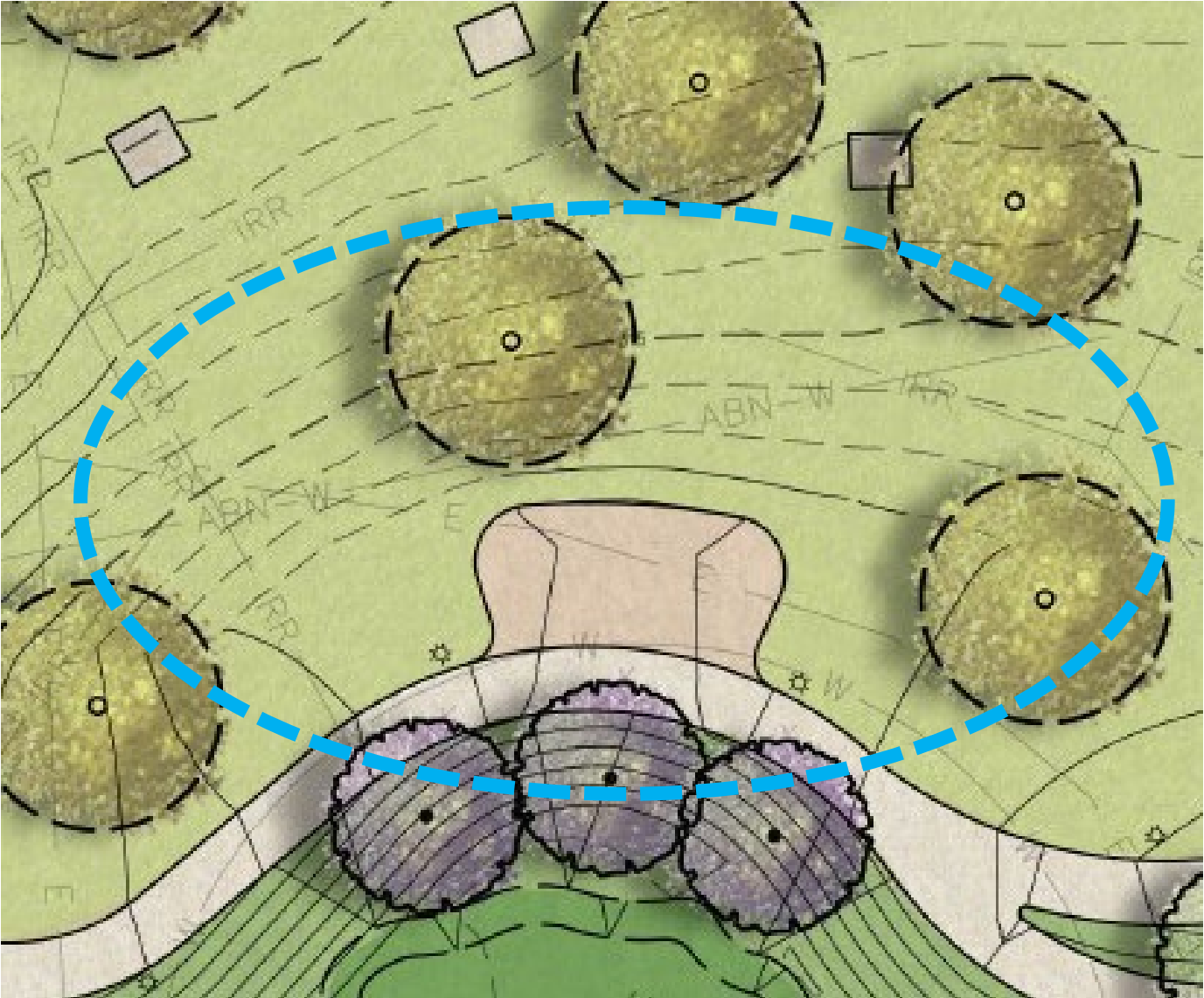
Stage with Informal Amphitheater

DRAFT GDP AMENDMENT



Stage with Informal Amphitheater

DRAFT GDP AMENDMENT



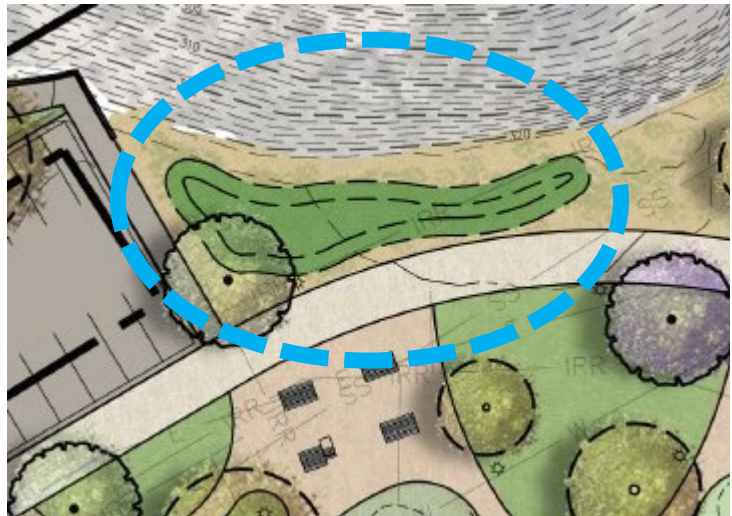
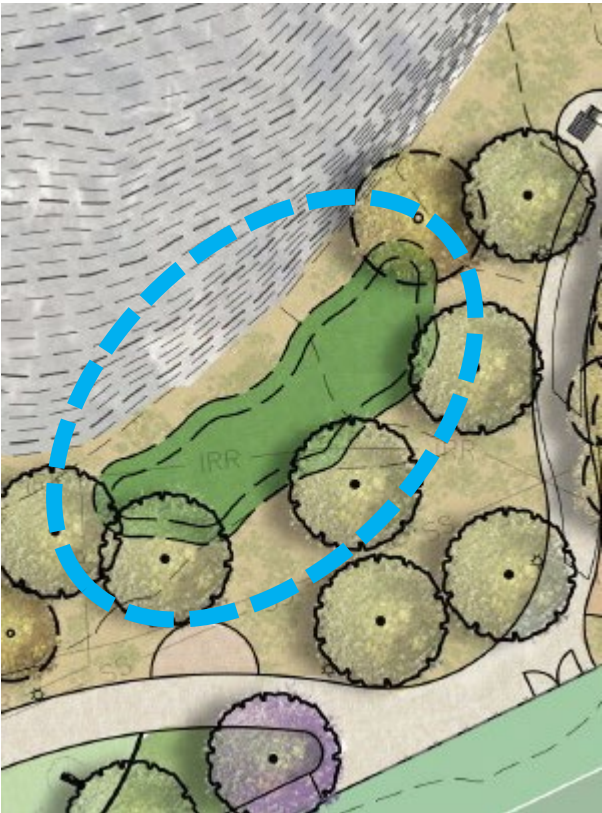
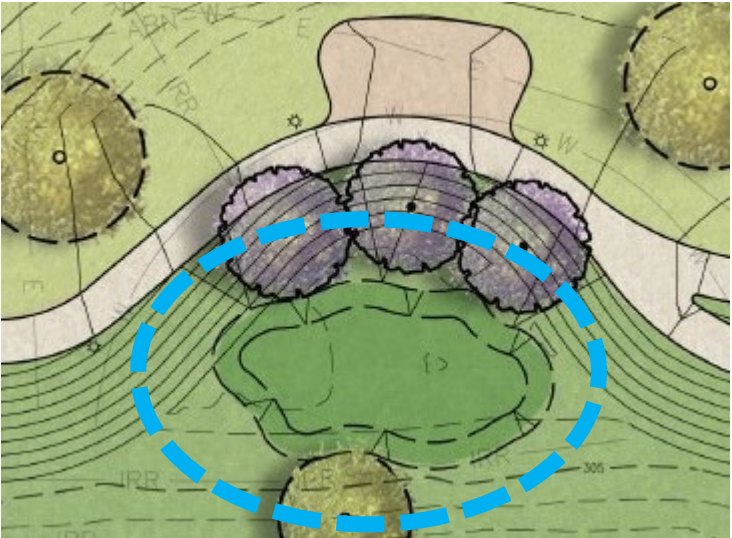
Swale & Water Quality Basins

DRAFT GDP AMENDMENT



Swale & Water Quality Basins

DRAFT GDP AMENDMENT



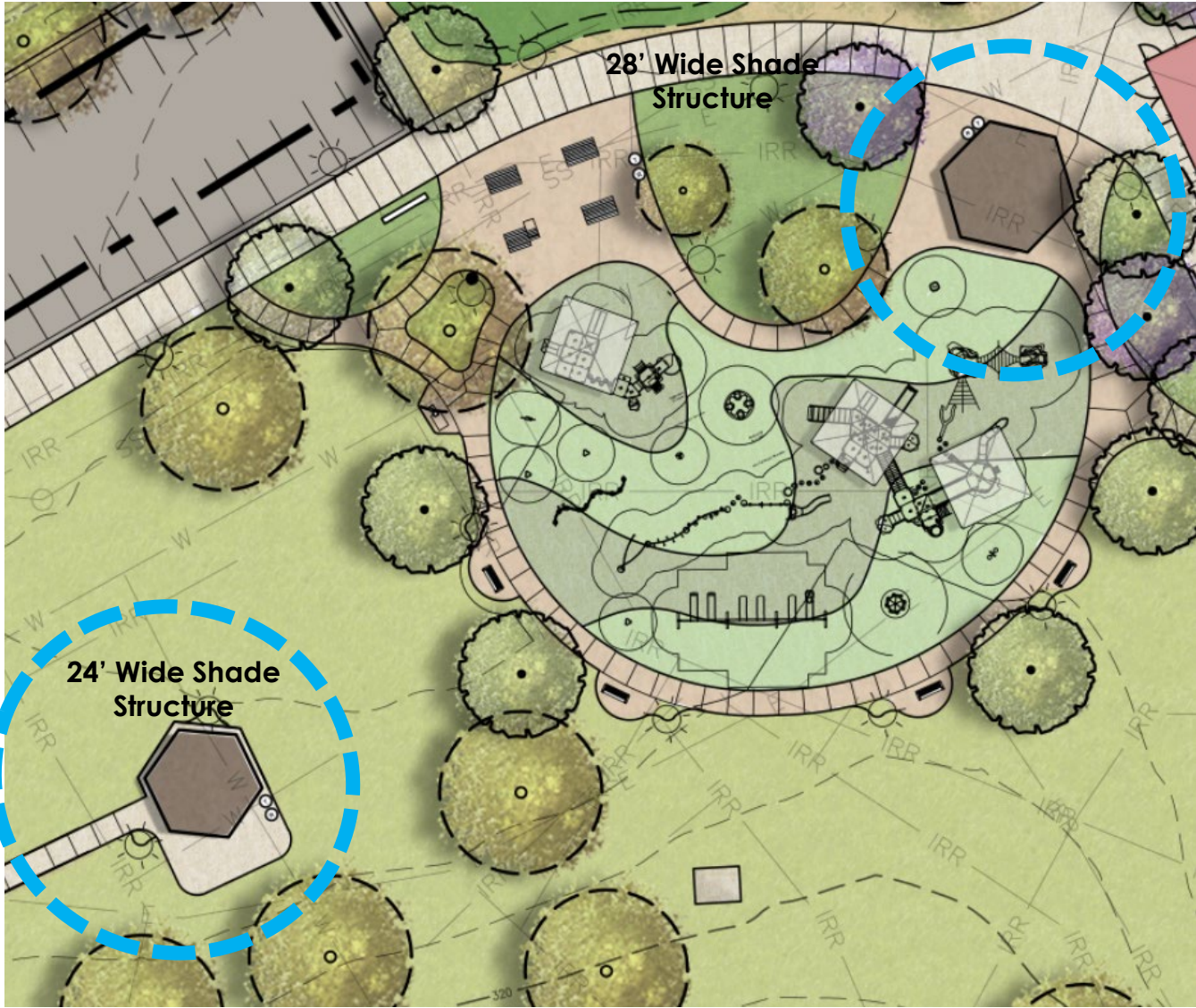
Shade Structures

DRAFT GDP AMENDMENT



Shade Structures

DRAFT GDP AMENDMENT



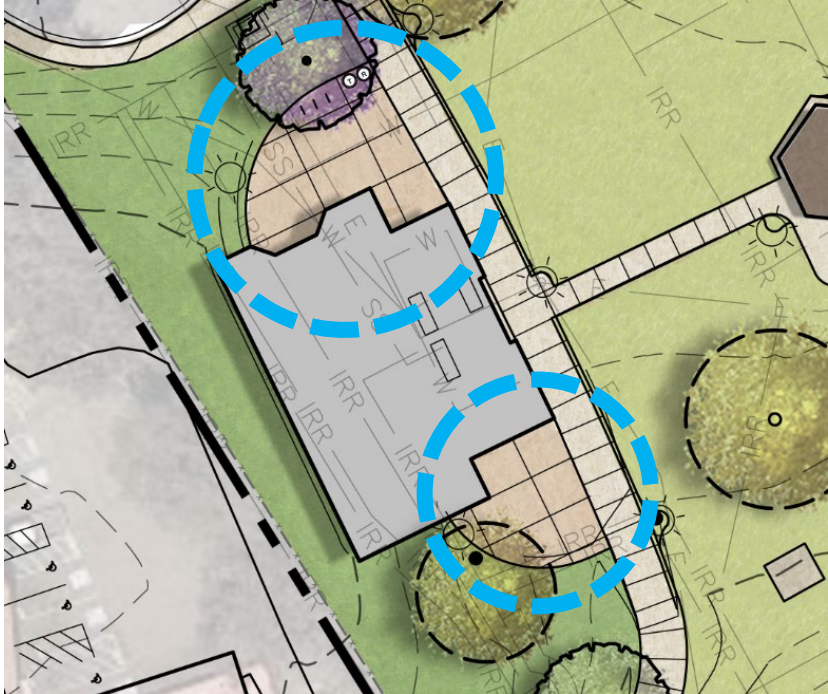
Potential Locations for Cultural Elements

DRAFT GDP AMENDMENT



Potential Locations for Cultural Elements

DRAFT GDP AMENDMENT



Site Furnishings


DRAFT GDP AMENDMENT

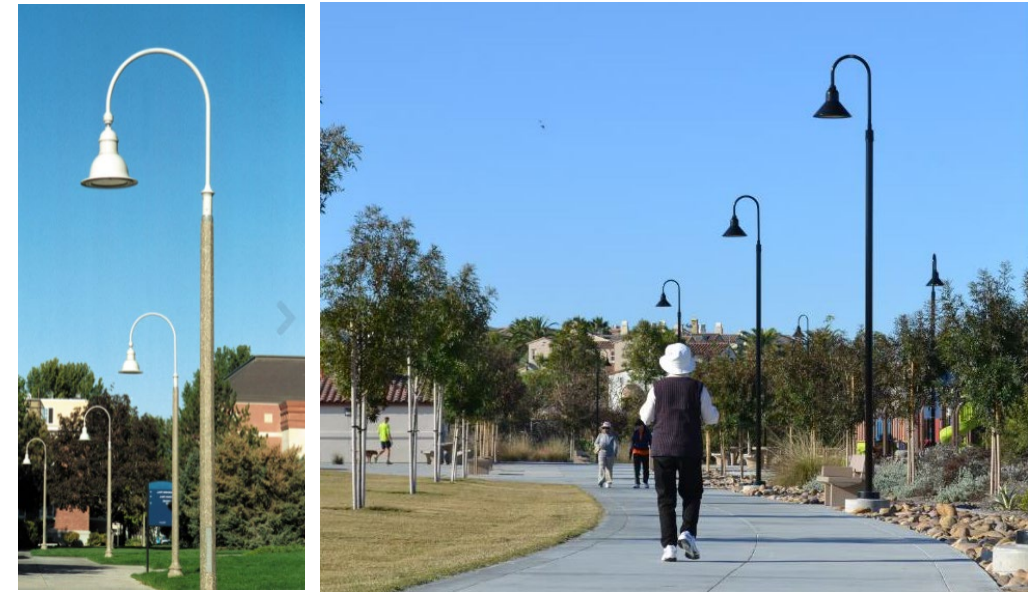


Pedestrian Circulation & Loop Path

DRAFT GDP AMENDMENT



-  Pedestrian Circulation
-  ADA Parking
-  Existing Pedestrian Light
-  Proposed Pedestrian Light



TREES



Arbutus x Marina
Arbutus x 'Marina'



Australian Willow
Geijera parviflora



Coast Live Oak
Quercus agrifolia



Brisbane Box Tree
Lophostemon confertus



Forest Pansy
Cercis canadensis



Desert Willow
Chilopsis linearis



Torrey Pine
Pinus torreyana



Pink Trumpet Tree
Handroanthus impetiginosus



Red Flowering Gum
Eucalyptus ficifolia



Tipu
Tipuana tipu

SHRUBS/GROUNDCOVER



Island Bush Snapdragon
Galvezia spp.



Orchid Rockrose
Cistus x purpureus



Coffeeberry
Rhamnus californica 'Eve Case'



Pine Muhley
Muhlenbergia dubia



Lantana
Lantana 'White Lightin'



Dwarf Mat Rush
Lomandra longifolia 'Breeze'



Agave
Agave spp.



Coyote Brush
Baccharis pilularis 'pigeon point'



Grevillea
Grevillea spp.



Autumn Moor Grass
Sesleria autumnalis



San Diego Sunflower
Viguiera lanceolata



Coast Rosemary
Westringia fruticosa



DISCUSSION



LEGEND

- 1 Recreation Center and Comfort Station
- 2 Children's Play Area
- 3 Outdoor Fitness Area
- 4 Basketball Courts, With Option for Multiple Sport Striping
- 5 Existing Tennis Courts to Remain, With Option for Multiple Sport Striping
- 6 Shaded Picnic Area
- 7 Natural Seating Area
- 8A Dog Park - Large Dogs
- 8B Dog Park - Small Dogs
- 9 Stage with Enhanced Concrete
- 10 Biofiltration Basin, Typ. (Potential Locations Shown)
- 11 ADA Parking
- 12 Cultural Element Plaza with Enhanced Concrete
- 13 24' Wide Shade Structure
- 14 28' Wide Shade Structure
- 15 Interpretive Trail head Sign
- 16 Permeable AC Trail
- 17 Retaining Wall and Guardrail at AC Trail
- 18 Native Planting, Typ.
- 19 Picnic Tables, Typ.
- 20 Benches, Typ.
- 21 10' HT. Chain link Fence at Courts
- 22 5' HT. Tubular Steel Fence with 16" Mow Curb
- 23 12' Wide Maintenance Gate, Typ.
- 24 Standard Concrete Loop Path With Distance Markers
- 25 Stairs With Handrails
- 26 Drinking Fountain, Typ.
- 27 Existing Chain link Fence at Tennis Courts to Remain, Typ. New Green Screen Mesh to be Installed at Existing Tennis Court Fence, Where Adjacent to Dog Park for Small Dogs
- 28 Pedestrian Pole Light, Typ.
- 29 Existing Trail head Stairs to Remain
- 30 Existing Picnic Table on Concrete Pad to Remain, Typ.
- 31 Removable Bollards
- 32 Standard Low Water Ornamental Planting, Typ.
- 33 Mulch Groundcover with Low Water Ornamental Planting - 15% of Area, Typ.
- 34 Decomposed Granite or Gravel Maintenance Access Road
- 35 Park Monument Sign
- 36 Trash and Recycling Bins, Typ.
- 37 Bicycle Rack

CONSULTANT:

 SCHMIDT
 DESIGN
 GROUP
 333 Newport Blvd, Suite 200, San Diego, CA 92109
 (619) 444-4444
 www.schmidt-design.com

DATE: 06/19/2024
 PROJECT #: 20-003
 DRAWN BY: HP

SCALE: 1" = 50' 0"

| DATE | ACTION | REFERENCE DOCUMENTS | DATE | J.D. NO. | DRAWG. NO. |
|-----------|-----------------------|---------------------|-------------|------------|-------------|
| 1983 | SITE ACQUIRED | REF. NO. | COST \$ TRS | | ACRES F. 03 |
| 1982 | SITE DEDICATED | REF. NO. | | | |
| 1980 | SDP CONSULTANT HIRING | REF. NO. | NAME | | |
| | DESIGN BOARD APPROVAL | DESIGN APPROVAL | DATE | | |
| 6-13-21 | INITIAL DEVELOPMENT | CDP NO. | J.D. NO. | DRAWG. NO. | |
| -12-27 | ADD IMPROV. | CDP NO. | J.D. NO. | DRAWG. NO. | |
| 9-17-2020 | CDP CONSULTANT HIRING | CDP NO. | J.D. NO. | DRAWG. NO. | |
| | PSM BOARD APPROVAL | CDP NO. | J.D. NO. | DRAWG. NO. | |
| | | CDP NO. | J.D. NO. | DRAWG. NO. | |
| | | CDP NO. | J.D. NO. | DRAWG. NO. | |

| ITEM | QUANTITY | IMPROVEMENTS SUMMARY (DATA FROM AS-BUILT DRAWINGS) | ITEM | QUANTITY |
|-------------------------|----------|--|-----------|----------|
| TOTAL SITE | 7.26 AC | RESILIENT SURFACING | 13,333 SF | |
| TURF | 1.6 AC | MULTI-PURPOSE CT. | 14,600 SF | |
| SHRUB PLANTING | 1.19 AC | STREET PARKING STALLS STD. | 36 | |
| DOG PARKING | 0.39 AC | STREET PARKING STALLS PARK | 7 | |
| DOG PARKING AT DOG PARK | 0.39 AC | RECREATION CENTER | 1 | |
| STD. CONCRETE PAVING | 0.67 AC | | | |
| ENHANCED CONCRETE PAV. | 0.21 AC | | | |

CITY OF SAN DIEGO PARK AND RECREATION DEPARTMENT

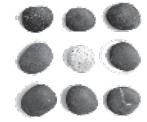
THE GENERAL DEVELOPMENT PLAN

EMERALD HILLS

NEIGHBORHOOD PARK

WBS No. P-20003

LAMBERT COORDINATES: 203-1747 THOMAS BROTHERS PAGE: 1200_C2



Discussion

Email questions and additional feedback to

Ling Chan

ChanL@sandiego.gov