

RESPONDING TO THE SITE

At the quiet southwest corner of the Chollas Lake Park, perched on a plinth overlooking views of the downtown skyline and Coronado Bridge, and nestled into the hillside along College Grove Drive amongst a eucalyptus grove backdrop, sits the new Oak Park Branch Library.

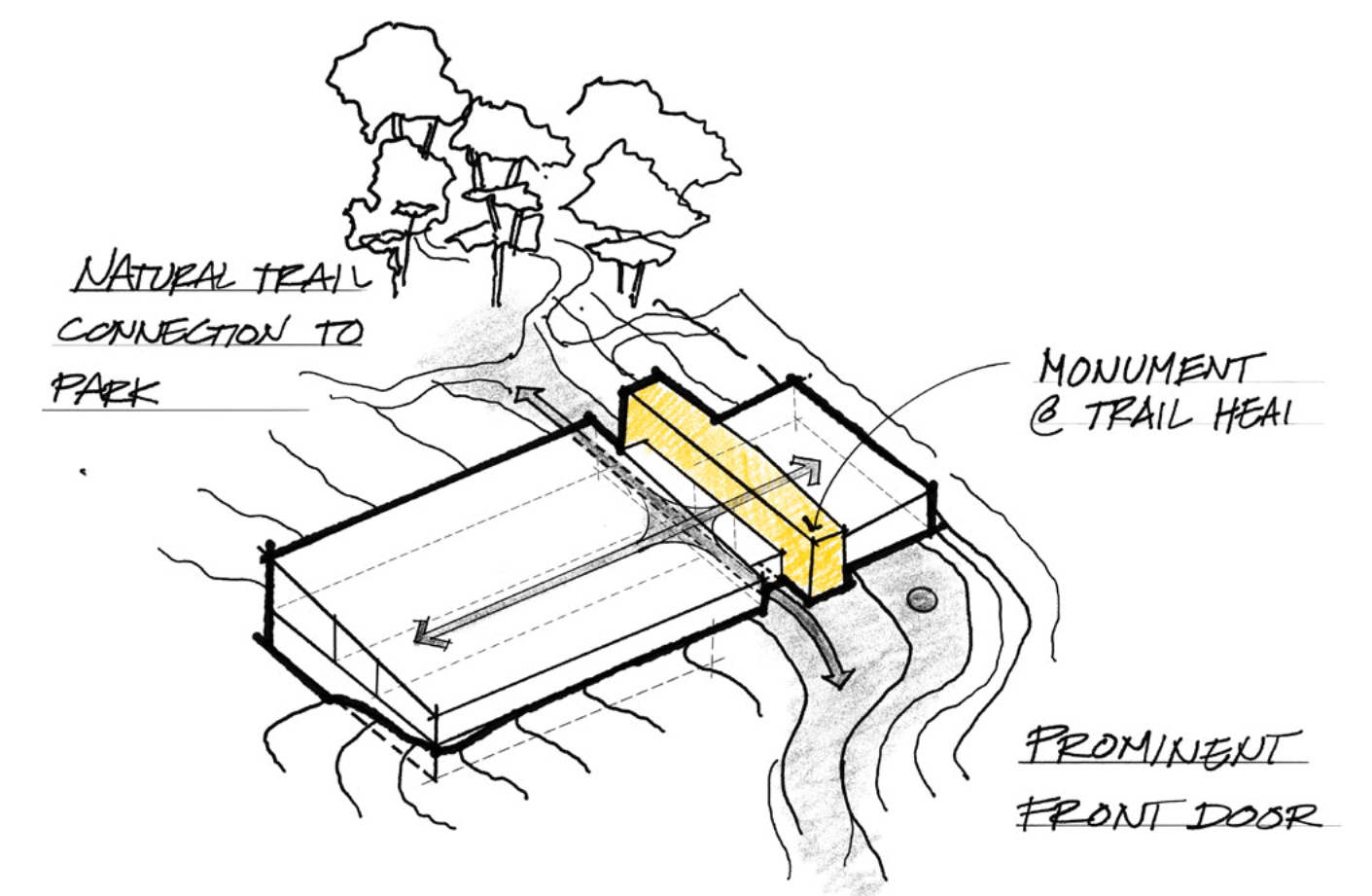
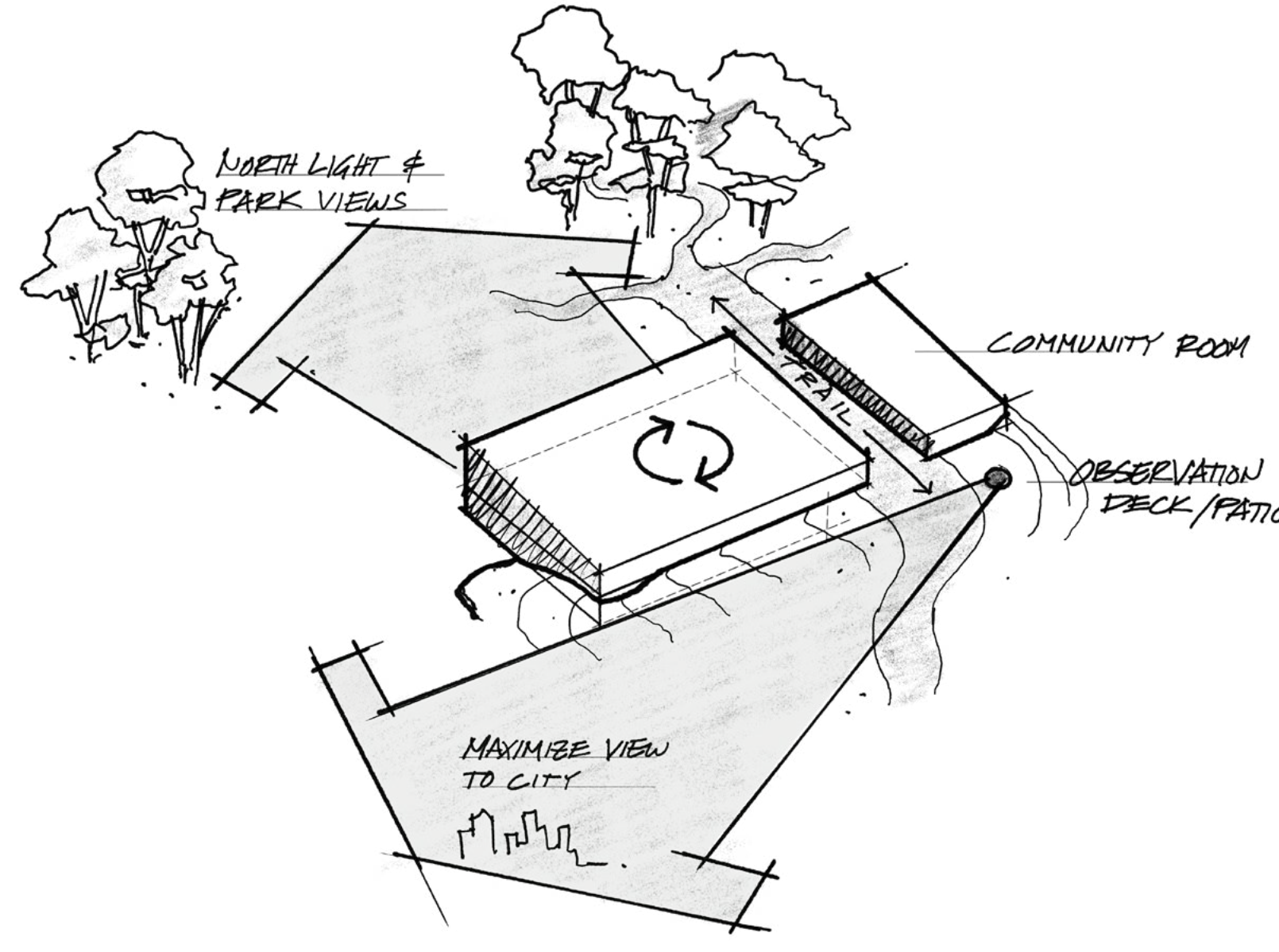
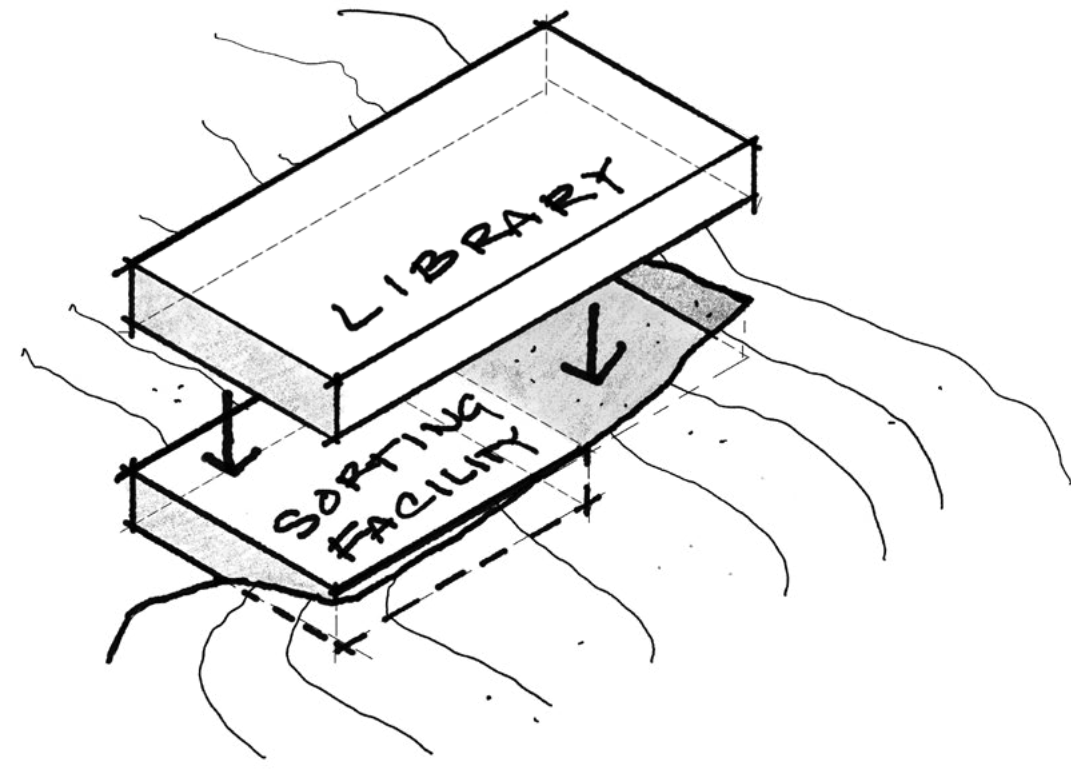
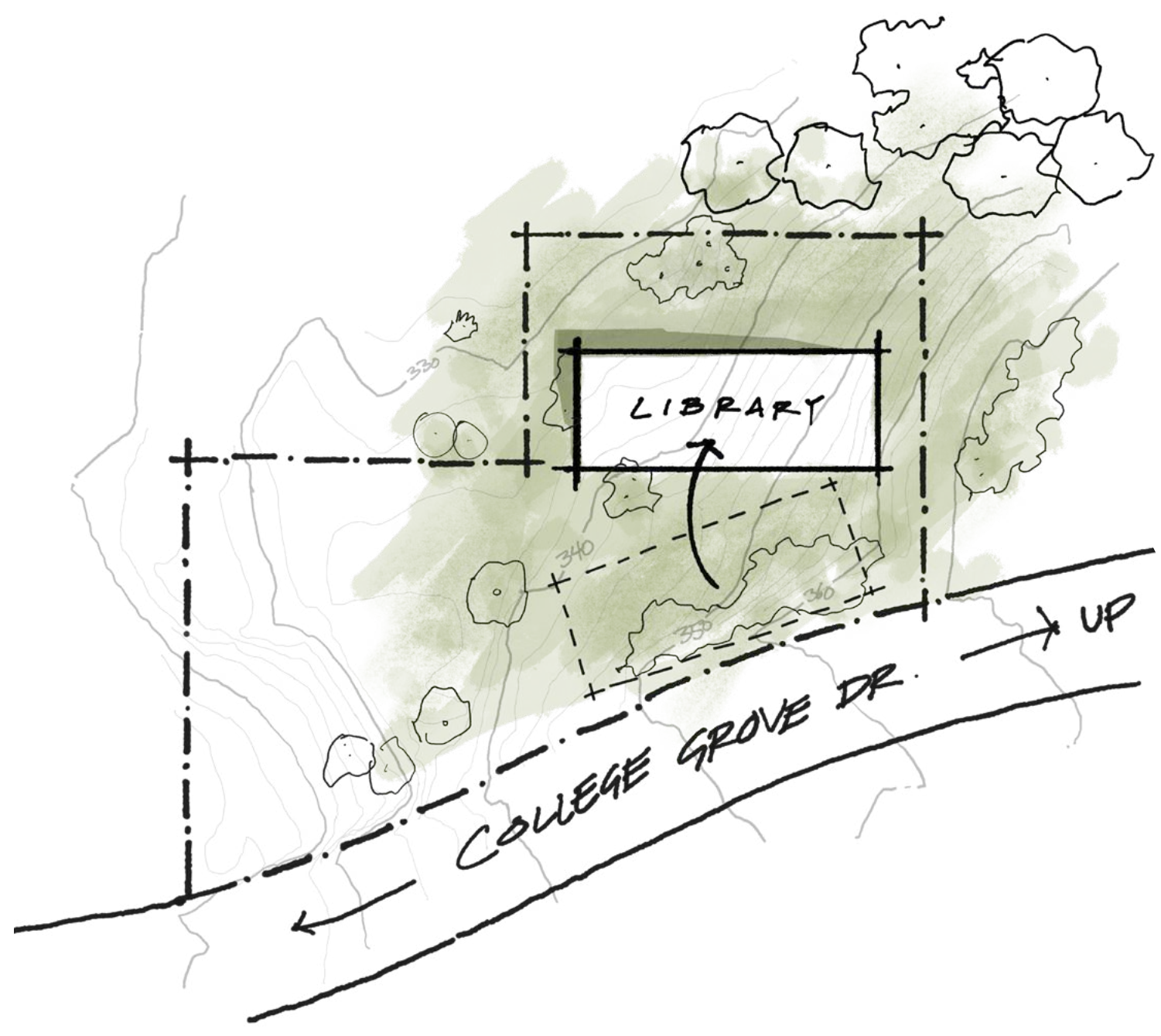
Serving as both a threshold to the park and a connection to the trail network beyond, the library is a nexus of community activity. In a sense, it is a trailhead—a gathering point and a departure point, organizing all the functions of the library while seamlessly connecting to the park and aligning with the future North Chollas Community Park Plan.

En la tranquila esquina suroeste de Chollas Lake Park, encaramada sobre un pedestal con vista al horizonte del centro de la ciudad y hacia el Puente Coronado, y anidado en la ladera a lo largo de College Grove Drive entre un bosque de eucaliptos como fondo, se encuentra la nueva biblioteca de Oak Park.

La biblioteca, que sirve como umbral hacia el parque y como conexión con la red de senderos, es un centro de actividad comunitaria. En cierto sentido, es un comienzo de sendero - un punto de encuentro y un punto de partida, que organiza todas las funciones de la biblioteca y al mismo tiempo conecta perfectamente con el parque.

RESPONDIENDO AL SITIO

ARCHITECTURAL SYMBOL / MONUMENT



1. IMMERSE SUMERGIR

Pull the building away from the street to immerse the library in the park

Posicionar el edificio alejado de la calle para sumergir la biblioteca dentro del parque.

2. NESTLE ANIDAR

Nestle the building into the grade to create a welcoming scale and low-profile presence

Anidar el edificio en el terreno para crear un ambiente acogedor y una presencia modesta.

3. ROTATE / ALIGN ROTAR Y ALINEAR

Rotate the building to best align with view corridors and bring the trail network through

Rotar el edificio para alinearlo mejor con la vista y llevar el sendero del parque a través del edificio.

4. CONNECT CONECTAR

Connect with the trail network and the community by creating an architectural monument at the lobby

Traer el sendero del parque a través del edificio y anclar la biblioteca con un volumen masivo que actúa como un monumento comunitario que conecta la biblioteca y la comunidad con su historia.



SITE PLAN

PLANO DE SITIO

SCALE 1" = 20'-0"

SITE DESIGN FEATURES		ENHANCED SITE DESIGN FEATURES	
01	ENTRY DRIVEWAY	A	SECONDARY COMMUNITY PATIO FACES THE EUCALYPTUS GROVE TO THE NORTH
02	MONUMENT SIGNAGE	B	ADDITIONAL PARKING STALL DESIGNATED FOR FAMILIES, EXPECTANT MOTHERS OR VETERANS
03	ADA ACCESSIBLE PARKING STALLS	C	SPECIMEN OAK TREE, A NAMESAKE FOR THE LIBRARY, IS A DEFINING FEATURE OF THE LIBRARY LANDSCAPE AND PROVIDES SHADE AT THE ENTRY PLAZA
04	ADA STAFF DESIGNATED PARKING STALL	D	NATURAL SITE FURNISHINGS SUCH AS FELLED EUCALYPTUS STUMPS PROVIDE PLAYFUL GATHERING AREAS NEAR THE LOBBY ENTRIES
05	DROP OFF + LOADING ZONE	E	NEW TRAIL PROVIDES A SAFE CONNECTION FROM THE PARKING AREA TO THE LIBRARY ENTRY AND THE EXISTING TRAIL NETWORK BEYOND
06	BIOSWALE FOR STORMWATER MANAGEMENT	F	ROADWAY ALIGNED WITH CHOLLAS PARK MASTERPLAN TO PROVIDE EASY EXTENSION OF THE DRIVE AISLE FOR FUTURE IMPLEMENTATION
07	SITE RETAINING SEAT WALLS	G	RAILROAD TIE STAIRS OFFER A PLAYFUL TRAIL EXPERIENCE LEADING TO THE ENTRY DOOR
08	WEST FACING OBSERVATION DECK	H	DIFFERENTIATED PAVING SIGNALS A SLOW ZONE FOR SAFE PASSENGER LOADING/UNLOADING
09	FENCED COMMUNITY PATIO	I	THROUGH LOBBY CONNECTION PROVIDES OPPORTUNITY FOR CONNECTING TO EXISTING TRAILS TO THE NORTH, FURTHER STITCHING THE LIBRARY INTO THE PARK
10	MOBILE SNACK BAR + CAFE LOCATION	J	ADA ACCESSIBLE PATH ALONG THE NORTH SIDE OF THE BUILDING PROVIDES EASY STAFF ACCESS FROM THE PARKING AREA
11	SORTING FACILITY LOADING AREA		
12	BICYCLE PARKING		
13	FUTURE AREA FOR BATTERY ENERGY STORAGE SYSTEMS (BESS)		
14	NEW SIGNALIZED INTERSECTION AT COLLEGE GROVE DRIVE		

REFLECTING COMMUNITY VALUES

REFLEJANDO VALORES COMUNITARIOS

The Oak Park community has a history of advocacy and determination: from fighting to keep the doors open of the local fire station and library during city-wide budget cuts in the 1970's to rallying the City to clean up the North Chollas Canyon area of Chollas Lake Park from a former dump site to an open space for enjoying nature and recreation; Oak Park exemplifies community resilience.

La comunidad de Oak Park tiene una historia de determinación en defender sus derechos; desde luchar para mantener abiertas las puertas de la estación de bomberos y la biblioteca local durante los recortes monetarios de la ciudad en la década de 1970 y hasta movilizar a la ciudad para limpiar el área del lago norte de Chollas de un antiguo vertedero a un espacio abierto para disfrutar de la naturaleza y la recreación; Oak Park es un ejemplo de resiliencia comunitaria.

This project, located at the southwest edge of the same North Chollas Canyon area the community fought for, intends to honor the spirit and resilience of the people of Oak Park. Two defining features within the lobby present opportunities for the community to assert your identity, tell your story, and honor your history.

Este proyecto, ubicado en el extremo suroeste de la misma zona de North Chollas Canyon por la que luchó la comunidad, tiene como objetivo honrar el espíritu y la resiliencia de la gente de Oak Park. Dos características definitorias dentro de la entrada presentan oportunidades para que la comunidad afirme su identidad, cuente su historia, y honre su pasado.

"...We need to stay strong and have more help and involvement by the community people in order to have a Community that is strong, cares, and is livable for all people to live and raise their families in.
Let's stay tough and get involved."

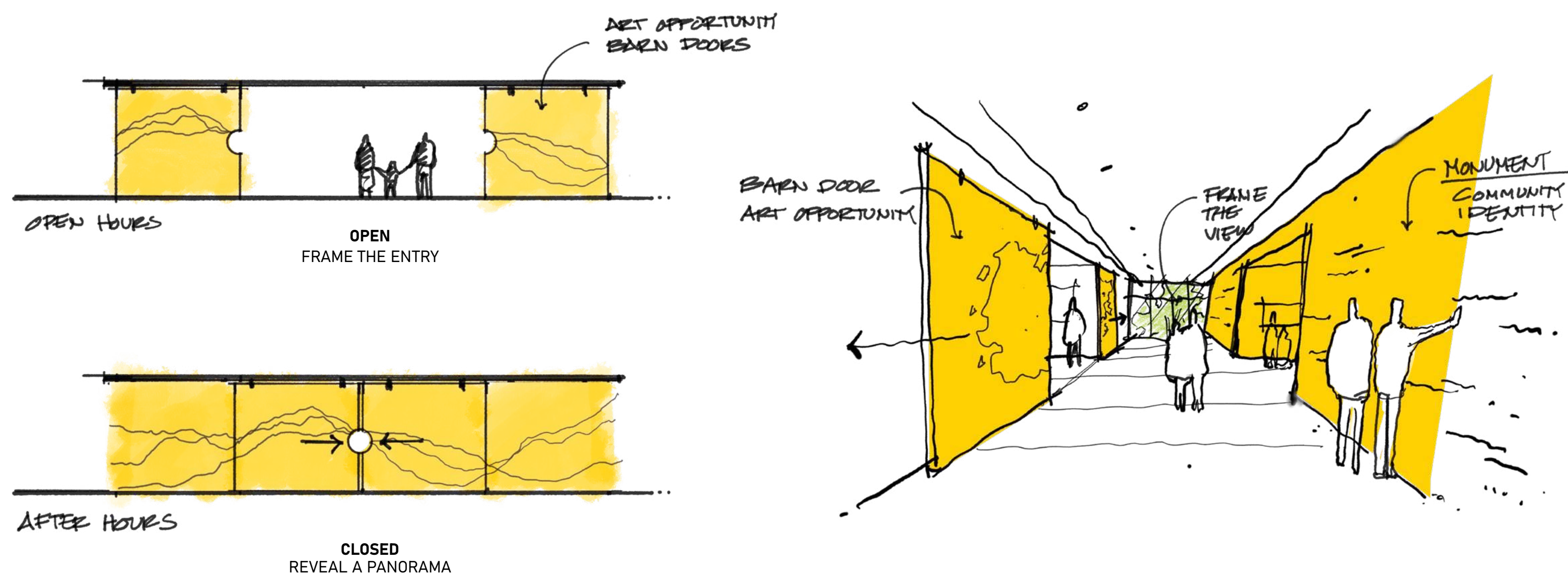
- Margo Leimbach,
First President of the Oak Park Community Council (1974)

01 THE BARN DOORS LAS PUERTAS

Framing the entrance to the library collections from the lobby, a large barn style door is a defining feature and provides a canvas for a potential mural or integration of large format public art that reflects the community. When open, the art is visible and frames the primary circulation within the library. When closed, it reveals an expanded canvas for the artwork.

02 THE MONUMENT EL MONUMENTO

At the intersection of the park and the library, a solid mass wall rises out of the ground, breaking the plane of the building's low-profile roof, marking the building entry and anchoring the lobby. All of the activity within the library revolves around it. It is a symbol of and monument to the strength, resilience and rootedness of the community and serves as a backdrop to tell the story of Oak Park.



A MODERN LIBRARY

UNA BIBLIOTECA MODERNA

A state-of-the-art facility designed to meet today's needs and remain relevant for decades to come, this flexible, open layout is organized around a main corridor that stitches together the primary circulation with opportunities for casual gathering, browsing, reading and socializing. With the idea of connecting the library and the park always in mind, each collection is a stop along the main corridor and is characterized by a different relationship to the surrounding site.

Diseñado como una instalación moderna diseñada para satisfacer las necesidades actuales y seguir siendo relevante en las próximas décadas, este diseño abierto y flexible está organizado alrededor de un corredor principal que une la biblioteca con oportunidades para reuniones informales, exploratorias, y sociales. Teniendo siempre en mente la idea de conectar la biblioteca con el parque, cada colección es una parada a lo largo del corredor principal y se caracteriza por una relación diferente con el sitio circundante.



- CHILDREN'S COLLECTION
- TEEN'S COLLECTION
- ADULT'S COLLECTION
- COMMUNITY SPACE
- STAFF SIGHT LINES

LIBRARY DESIGN FEATURES

- 01 HISTORY OF OAK PARK DISPLAY CASES
- 02 DONOR WALL
- 03 SELF CHECKOUT STATIONS
- 04 BOOK DUMBWAITER
- 05 BIFOLDING ACOUSTIC ROOM PARTITION
- 06 STORYTIME PEBBLE-SCAPE READING CORNER
- 07 CHILDREN'S CUSTOMER SERVICE DESK
- 08 ENHANCED ACOUSTIC STUDY ROOMS FOR MUSIC, PODCASTING AND A/V RECORDING
- 09 LIBRARY STAFF ENTRY

ENHANCED DESIGN FEATURES

- A ELEVATED PATIO OFFERS VIEWS OF DOWNTOWN AND A SECURE, QUIET, OUTDOOR READING AREA
- B SECONDARY COMMUNITY PATIO FACES THE EUCALYPTUS GROVE TO THE NORTH
- C ADDITIONAL STORAGE ROOM
- D AFTER-HOURS ACCESSIBLE GENDER INCLUSIVE RESTROOM
- E LARGE SLIDING BARN DOORS PRESENT AN OPPORTUNITY FOR PUBLIC ART AND SEPARATES THE LIBRARY FROM LOBBY AFTER HOURS

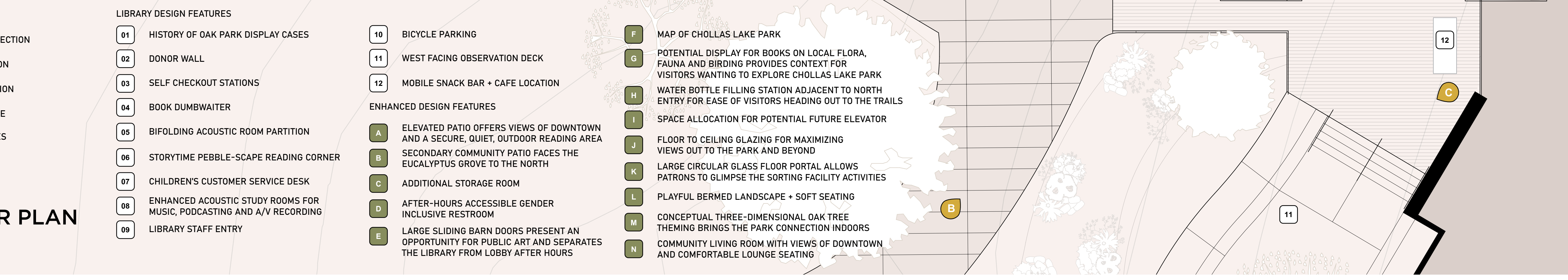
MAP OF CHOLLAS LAKE PARK

- F POTENTIAL DISPLAY FOR BOOKS ON LOCAL FLORA, FAUNA AND BIRDING PROVIDES CONTEXT FOR VISITORS WANTING TO EXPLORE CHOLLAS LAKE PARK
- G WATER BOTTLE FILLING STATION ADJACENT TO NORTH ENTRY FOR EASE OF VISITORS HEADING OUT TO THE TRAILS
- H SPACE ALLOCATION FOR POTENTIAL FUTURE ELEVATOR
- I FLOOR TO CEILING GLAZING FOR MAXIMIZING VIEWS OUT TO THE PARK AND BEYOND
- J LARGE CIRCULAR GLASS FLOOR PORTAL ALLOWS PATRONS TO GLIMPSE THE SORTING FACILITY ACTIVITIES
- K PLAYFUL BERMED LANDSCAPE + SOFT SEATING
- L CONCEPTUAL THREE-DIMENSIONAL OAK TREE THEMING BRINGS THE PARK CONNECTION INDOORS
- M COMMUNITY LIVING ROOM WITH VIEWS OF DOWNTOWN AND COMFORTABLE LOUNGE SEATING
- N

LIBRARY FLOOR PLAN

PLANO DE LA BIBLIOTECA

SCALE 1/8" = 1'-0"



SORTING FACILITY DESIGN FEATURES

- 01 OVERHEAD COILING SECURITY DOOR
- 02 OVERHEAD COILING LOADING DOCK DOORS
- 03 TRAFFIC IMPACT BOLLARDS
- 04 EQUIPMENT AND GENERAL STORAGE AREA
- 05 INBOUND TOTES STAGING AREA
- 06 OUTBOUND TOTES STAGING AREA
- 07 EXISTING BOOK SORTING MACHINE (BY OWNER)
- 08 VERTICAL BOOK DUMBWAITER
- 09 STAFF LOCKERS
- 10 OVERHEAD VIEW PORTAL FROM LIBRARY
- 11 BICYCLE PARKING
- 12 ADA ACCESSIBLE STAFF PARKING
- 13 ADA ACCESSIBLE SORTING FACILITY STAFF ENTRY

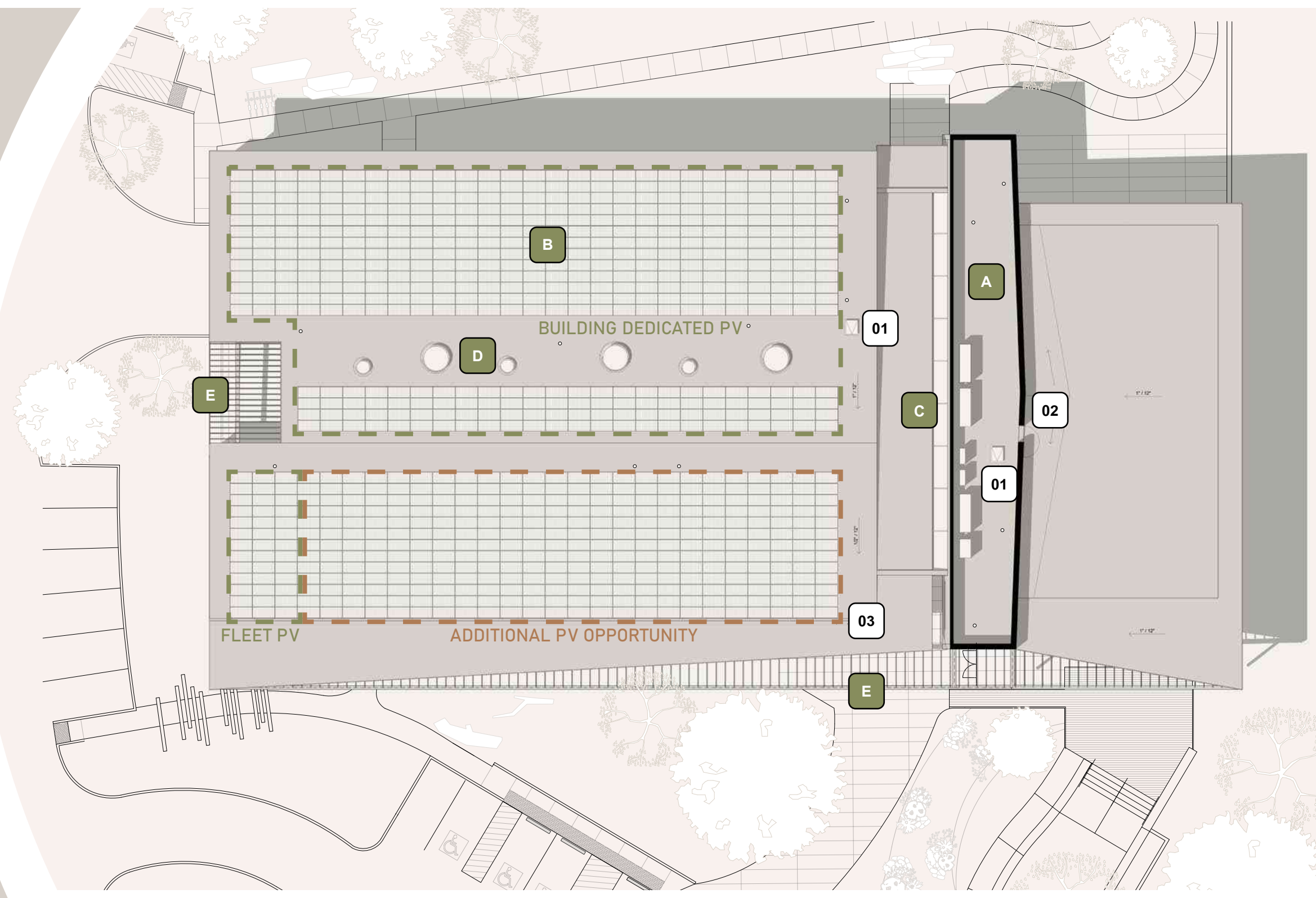
ENHANCED DESIGN FEATURES

- A INTERIOR TRASH ROOM
- B COVERED/SECURE LOADING AREA AND PARKING FOR TWO MID-SIZE FLEET VEHICLES
- C SPACE ALLOCATION FOR POTENTIAL FUTURE ELEVATOR
- D HANDWASHING SINK + DRINKING FOUNTAIN
- E NATURAL DAYLIGHTING + VIEWS TO EUCALYPTUS GROVE FOR STAFF AREAS
- F GLAZED INTERIOR WALLS SHARE LIGHT + VIEWS WITH THE SORTING ROOM FLOOR

SORTING FACILITY PLAN

PLANO DEL CENTRO DE DISTRIBUCIÓN DE LIBROS

SCALE 1/8" = 1'-0"



ROOF PLAN

PLANO DE TECHO

SCALE 1/24" = 1'-0"

ROOF DESIGN FEATURES

- 01 ROOF ACCESS HATCH VIA PERMANENT LADDER WITH CONTROLLED ACCESS FROM SECURE ROOMS TO PREVENT ENTRY BY UNAUTHORIZED PERSONS
- 02 SECURE ACCESS TO COMMUNITY ROOM ROOF FOR MAINTENANCE BY AUTHORIZED PERSONS
- 03 ROOF VALLEY GUTTER DIRECTS CATCHES WATER COLLECTED ON ROOF AND REDIRECTS TO SITE STORMWATER SYSTEMS

ENHANCED DESIGN FEATURES

- A SECURE MECHANICAL ZONE WITH FULL SCREENING OF ROOFTOP MOUNTED MECHANICAL UNITS
- B MAXIMUM POTENTIAL FOR FUTURE PHOTOVOLTAIC SOLAR ARRAY ON SOUTHWEST ORIENTED LOW SLOPE ROOF
- C LINEAR SKYLIGHT BRINGS NATURAL DAYLIGHT INTO THE LOBBY SPACE AND HIGHLIGHTS THE CONNECTION BETWEEN THE TWO ENTRIES
- D DIMMABLE SKYLIGHTS PROVIDE NATURAL DAYLIGHT WITHOUT CREATING EXCESSIVE HEAT GAIN
- E SOUTH + WEST FACING SHADE TRELLIS FILTERS DAYLIGHT + PROTECTS AGAINST HARSH AFTERNOON SUNLIGHT



E View from Sorting 'Feeder' Position



F View of Overhead Viewing Portal in Library Floor for Observation of Book Sorting

A WELCOMING LIBRARY

UNA BIBLIOTECA ACOGEDORA

Serving as the heart of the community, the Oak Park Branch Library is a safe, welcoming and inclusive space for all. Emphasizing a clear and well-defined public entry easily visible and accessible from College Grove Drive on one side and North Chollas Canyon on the other, this civic building is approachable and inviting through its human scale, use of warm materials such as wood, ample glazing for access to daylight and views, and incorporating multiple languages into the wayfinding.

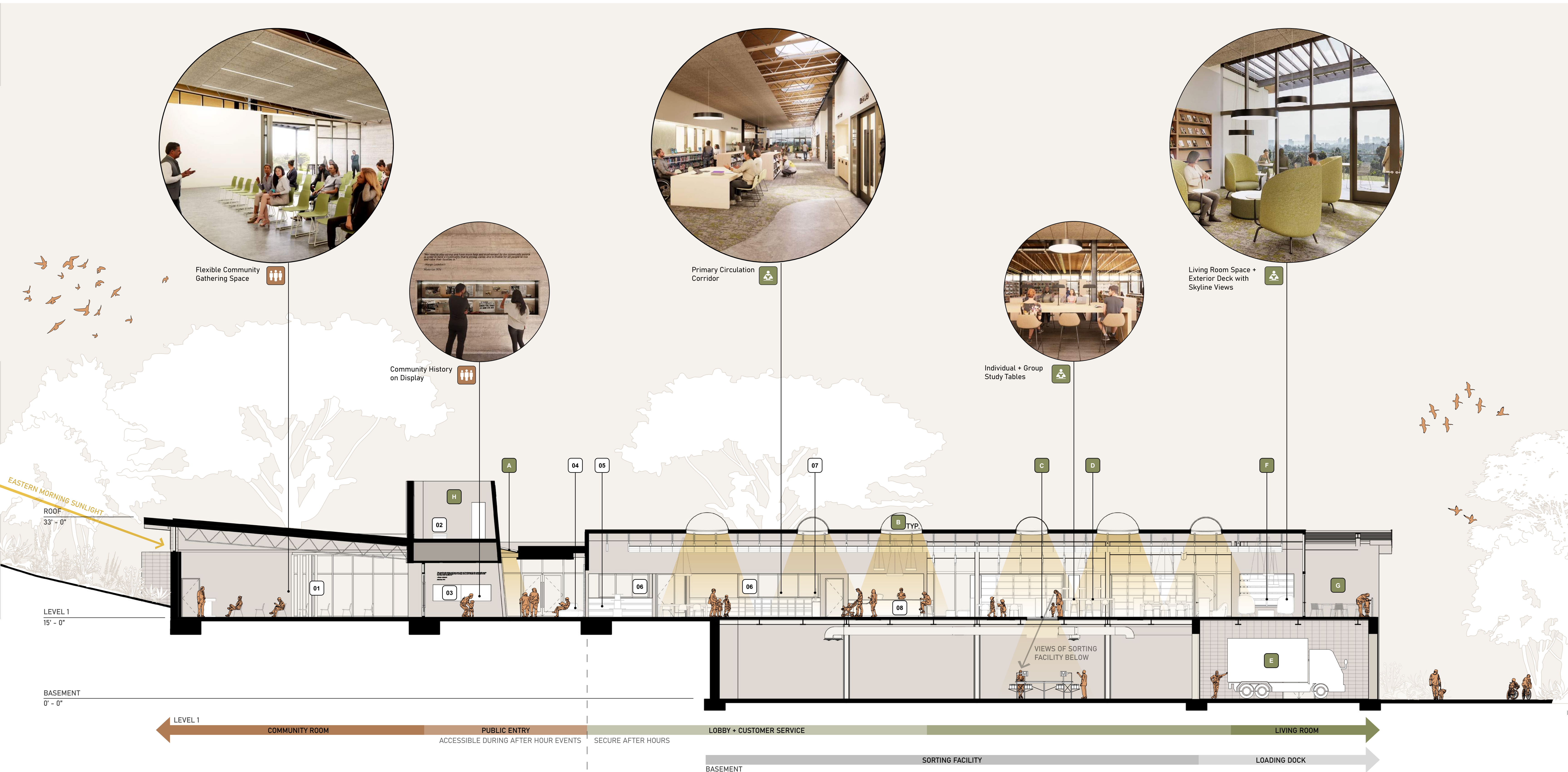
La biblioteca de Oak Park, que sirve como corazón de la comunidad, es un espacio seguro, acogedor e inclusivo para todos. Haciendo énfasis en una entrada pública clara y bien definida, fácilmente visible y accesible desde College Grove Drive por el sur y North Chollas Canyon por el norte, este edificio cívico es accesible y atractivo a través de su escala humana, el uso de materiales cálidos como la madera, amplio ventanales para el acceso a luz natural y vistas, e incorporando múltiples idiomas en el enfoque de señalización.



NORTH ELEVATION
ELEVACIÓN NORTE
SCALE 1/8" = 1'-0"



SOUTH ELEVATION
ELEVACIÓN SUR
SCALE 1/8" = 1'-0"



SECTION A
SECCIÓN A
SCALE 1/8" = 1'-0"

- CHILDREN'S COLLECTION
- TEEN'S COLLECTION
- ADULTS' COLLECTION
- COMMUNITY SPACE

BUILDING DESIGN FEATURES

- 01** BIFOLDING OVERSIZED DOOR LEADING TO EXTERIOR COMMUNITY PATIO
- 02** SECURE ACCESSIBLE ROOF ACCESS
- 03** HISTORY OF OAK PARK DISPLAY CASES
- 04** COMFORTABLE LOUNGE SEATING BY PUBLIC ENTRY
- 05** BROWSING + POPULAR READING DISPLAYS
- 06** CLEAR VISIBILITY FROM STAFF AREA
- 07** ONLINE PUBLIC ACCESS CATALOG COMPUTERS
- 08** CUSTOMER SERVICE DESK

ENHANCED DESIGN FEATURES

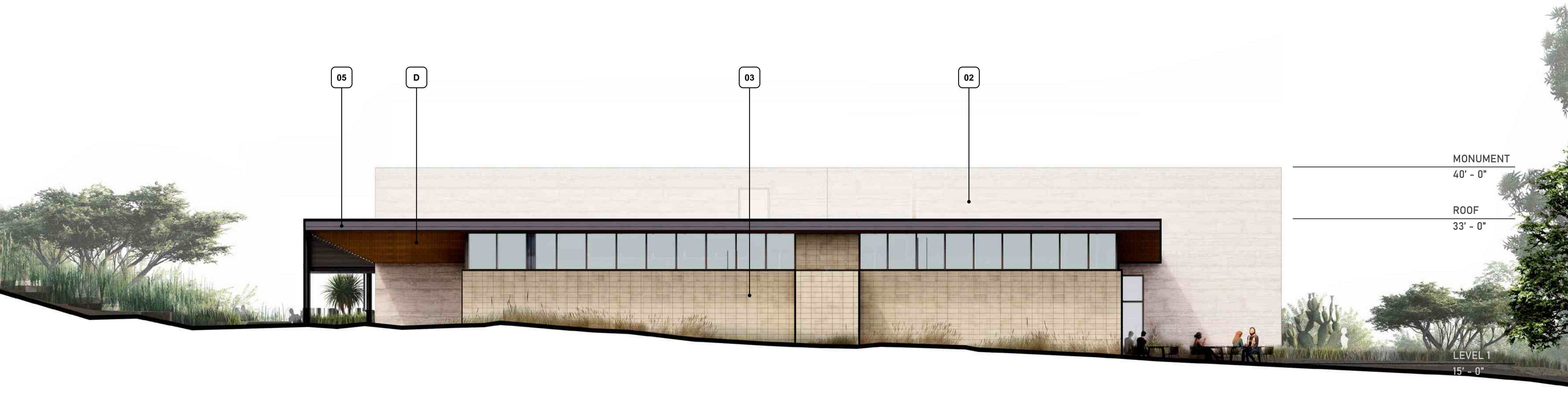
- A** LINEAR SKYLIGHT BRINGS DAYLIGHT THROUGH THE LOBBY SPACE, HIGHLIGHTING THE MONUMENT WALL HONORING THE HISTORY + STRENGTH OF THE OAK PARK COMMUNITY
- B** DIMMABLE, NATURAL DAYLIGHTING SKYLIGHTS
- C** LARGE CIRCULAR GLASS PORTAL IN THE FLOOR ALLOWS PATRONS TO GLIMPSE THE SORTING FACILITY ACTIVITIES
- D** VARIETY OF SEATING + TABLE HEIGHTS TO ACCOMMODATE VARYING USER PREFERENCES
- E** COVERED + SECURE LOADING DOCK AREA AT THE SORTING FACILITY
- F** COMMUNITY LIVING ROOM WITH VIEWS OF DOWNTOWN + COMFORTABLE LOUNGE SEATING
- G** ELEVATED PATIO OFFERS VIEWS OF DOWNTOWN + A SECURE, QUIET, OUTDOOR READING AREA
- H** SECURE MECHANICAL ZONE WITH FULL SCREENING OF ROOFTOP MOUNTED MECHANICAL UNITS

A SUSTAINABLE LIBRARY

UNA BIBLIOTECA SOSTENIBLE

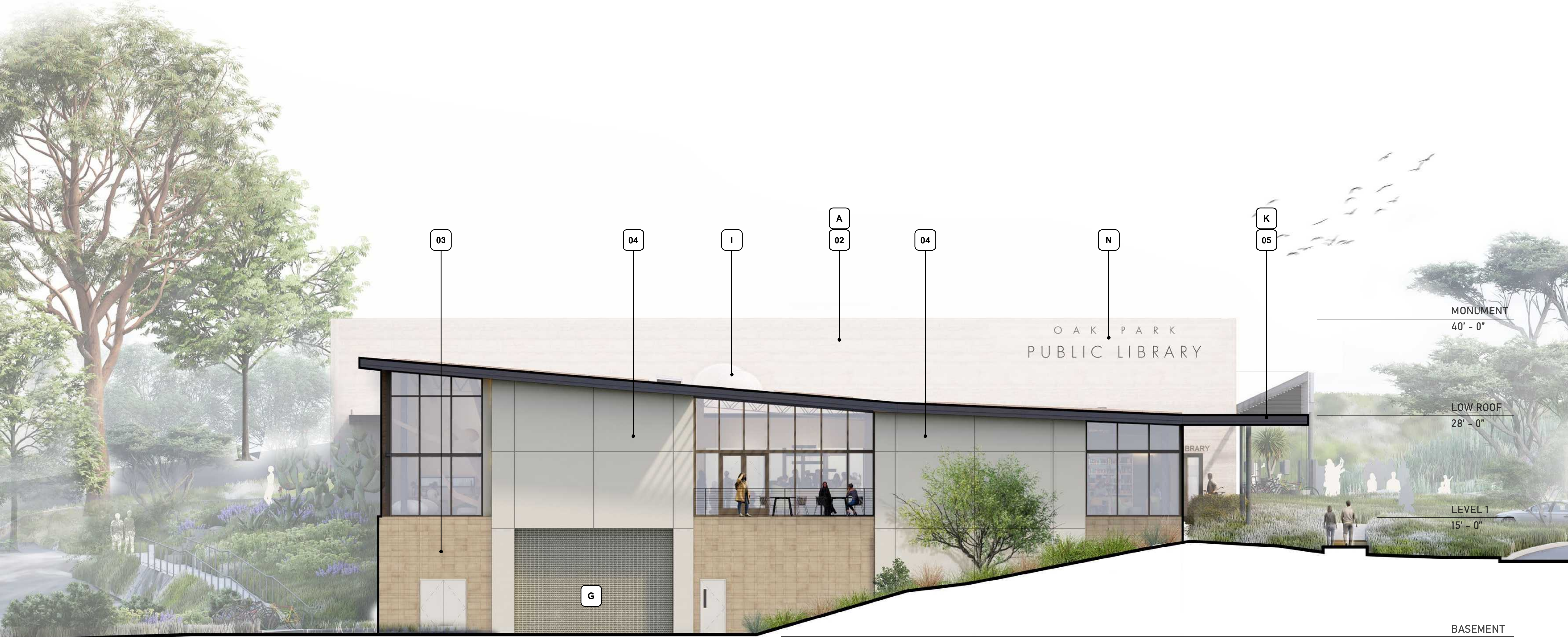
The sustainable design approach is centered on delivering an all-electric, Net-Zero energy, low-carbon building. Balancing passive strategies for daylighting with a highly-efficient building envelope and systems results in ambitious energy use reductions and lower operational cost. Other areas of focus indoor environmental quality through healthy materials selections and ample natural light and views, and sustainable site design and water-use reductions through utilizing drought-tolerant planting.

El enfoque de diseño sostenible se centra en ofrecer un edificio totalmente eléctrico, de energía neta cero y con bajas emisiones de carbono. Equilibrar las estrategias pasivas para la iluminación natural con una envolvente y sistemas de construcción altamente eficientes da como resultado reducciones ambiciosas en el uso de energía y menores costos operativos. Otras áreas de enfoque son la calidad ambiental interior a través de selecciones de materiales saludables y abundante luz y vistas naturales, y diseño de áreas verdes sustentables y reducciones en el uso de agua mediante la utilización de plantas tolerantes a la sequía.



EAST ELEVATION

ELEVACIÓN ESTE
SCALE 1/8" = 1'-0"



WEST ELEVATION

ELEVACIÓN OESTE
SCALE 1/8" = 1'-0"

ELEVATION DESIGN FEATURES

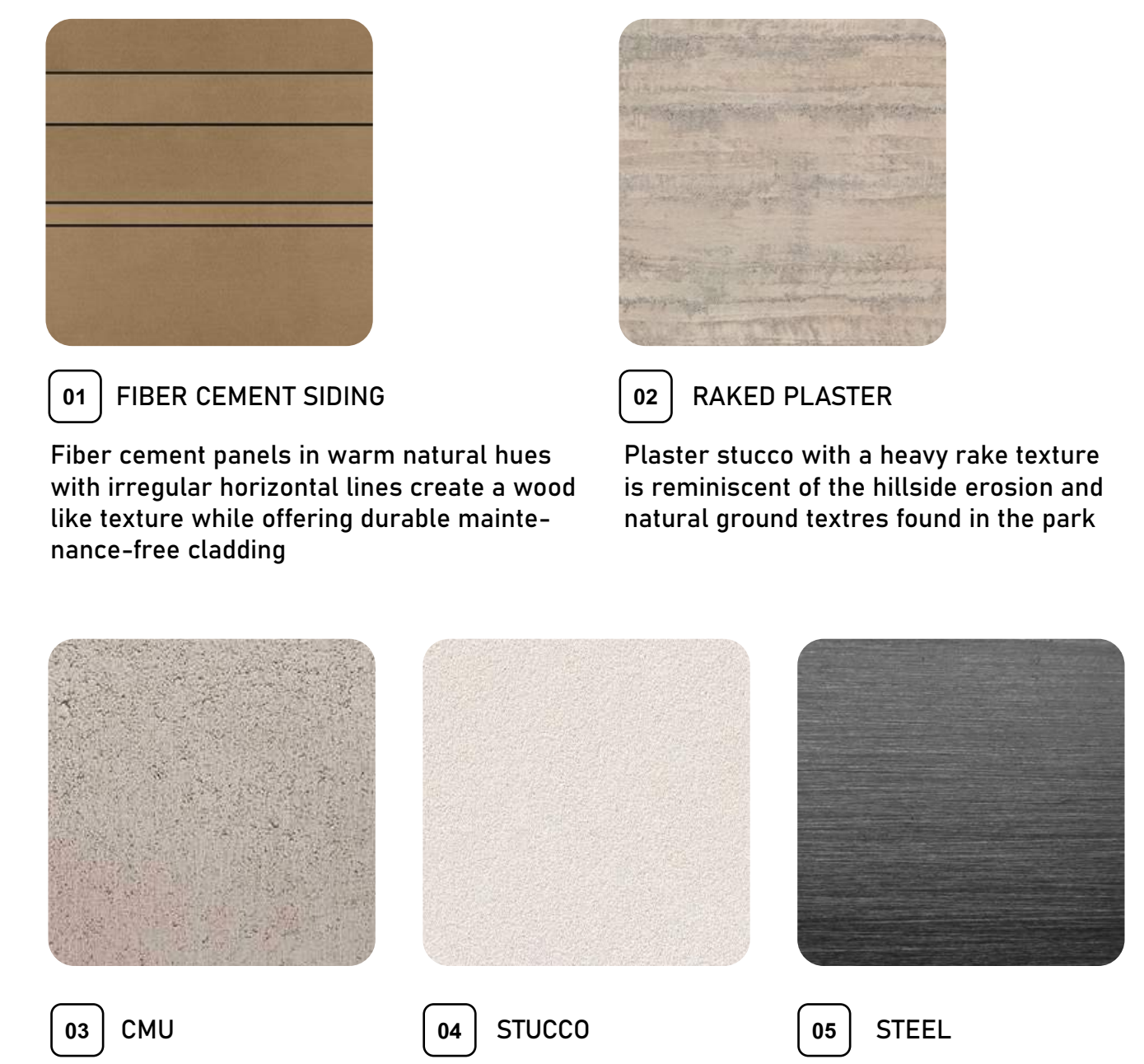
CARACTERÍSTICAS DE DISEÑO

- A ARCHITECTURAL MONUMENT HONORING THE STRENGTH AND RESILIENCE OF THE OAK PARK COMMUNITY
- B MAP OF CITY LIBRARIES SERVED BY THE NEW SORTING FACILITY
- C FLOOR TO CEILING GLAZING MAXIMIZES VIEWS TO THE PARK AND INCREASING NORTHERN DAYLIGHT INTO THE SPACE
- D SHADED COMMUNITY PATIO
- E THROUGH LOBBY PROVIDES ACCESS TO THE LIBRARY FROM THE PARKING/ DROP-OFF AREA AND THE PARK
- F SEPARATE STAFF ENTRANCE AT NORTH BUILDING FACADE
- G SECURE SORTING FACILITY LOADING AREA HIDDEN FROM VIEW
- H REPURPOSED SIGNAGE FROM EXISTING OAK PARK BRANCH LIBRARY PAYS HOMAGE TO THE OLD FACILITY
- I PLAYFUL, CIRCULAR SKYLIGHTS CAST SHADOWS INTO THE MAIN CIRCULATION CORRIDOR WITHIN THE LIBRARY
- J PHOTOVOLTAIC PANELS ARE A VISIBLE DISPLAY OF THE CITY'S COMMITMENT TO SUSTAINABILITY
- K STEEL CANOPY PROVIDES SHADED OUTDOOR AREA AND PASSIVELY CONTROLS GLARE AND HEAT GAIN WITHIN THE LIBRARY SPACE
- L FLOOR TO CEILING GLAZING FRAMES VIEWS OF THE DOWNTOWN SKYLINE AND CORONADO BRIDGE
- M SERVING ROOM PASS-THROUGH WINDOW WITH STAINLESS STEEL LOCKABLE SHUTTERS AT COMMUNITY PATIO
- N VISUALLY PROMINENT EXTERIOR 20'-0" LIBRARY SIGN

ELEVATION MATERIALS

MATERIALES DE ELEVACIÓN

Durable materials in warm, natural hues were selected to harmonize with the surrounding natural context.



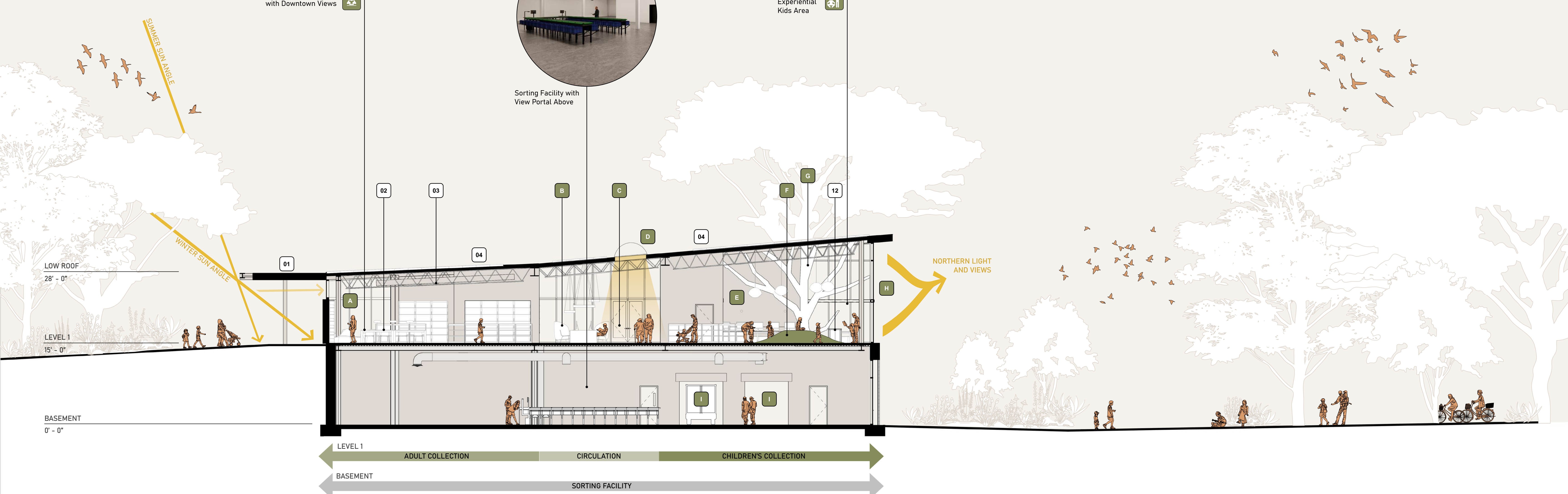
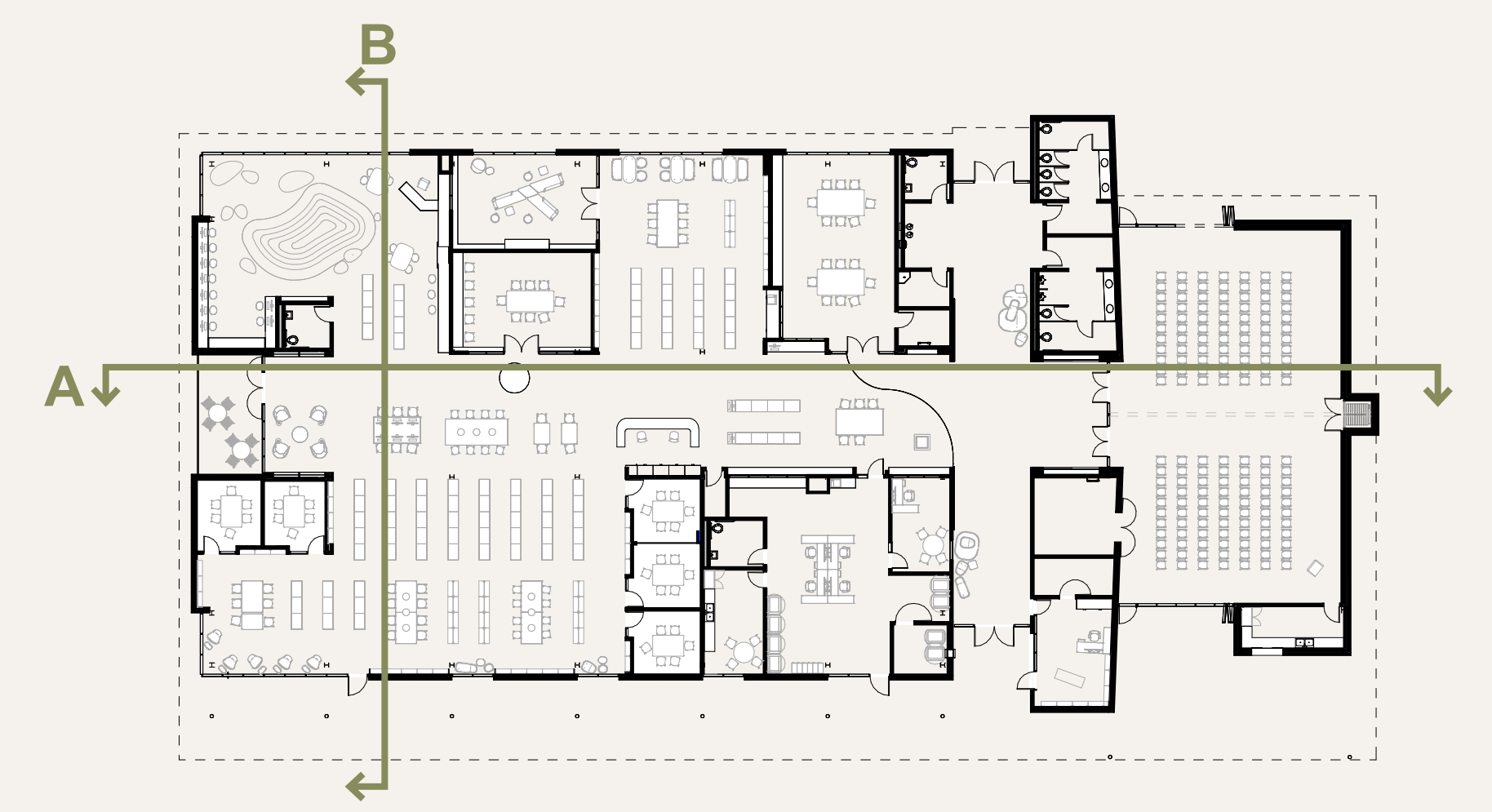
Adult Study Tables with Downtown Views



Flora + Fauna Experiential Kids Area



Sorting Facility with View Portal Above



SECTION B

SECCIÓN B
SCALE 1/8" = 1'-0"

- CHILDREN'S COLLECTION
- TEEN'S COLLECTION
- ADULTS' COLLECTION
- COMMUNITY SPACE

BUILDING DESIGN FEATURES

- 01 SOUTHERN SHADING ROOF OVERHANG
- 02 BETWEEN-THE-STACKS STUDY TABLES
- 03 EXPOSED HYBRID WOOD/STEEL TRUSSES
- 04 SOUTHERN ORIENTED PV SOLAR ARRAY (BY OWNER)
- 05 KIDS STAFF/CUSTOMER SERVICE DESK

ENHANCED DESIGN FEATURES

- A FLOOR TO CEILING GLAZING FOR MAXIMIZING VIEWS OF DOWNTOWN + CORONADO BRIDGE
- B COMMUNITY LIVING ROOM WITH VIEWS OF DOWNTOWN + COMFORTABLE LOUNGE SEATING
- C ACCESS TO SECURE, OUTDOOR READING PATIO OFFERING VIEWS OF DOWNTOWN
- D DIMMABLE, NATURAL DAYLIGHTING SKYLIGHTS
- E KIDS THEMED ART WALL OPPORTUNITY

- F PLAYFUL BERMED LANDSCAPE + SOFT SEATING
- G CONCEPTUAL THREE-DIMENSIONAL OAK TREE THEMING BRINGS THE PARK CONNECTION INDOORS
- H FLOOR TO CEILING GLAZING FOR MAXIMIZING VIEWS OF CHOLLAS LAKE PARK TO THE NORTH
- I GARAGE DOOR ACCESS TO COVERED + SECURE SORTING FACILITY LOADING DOCK