

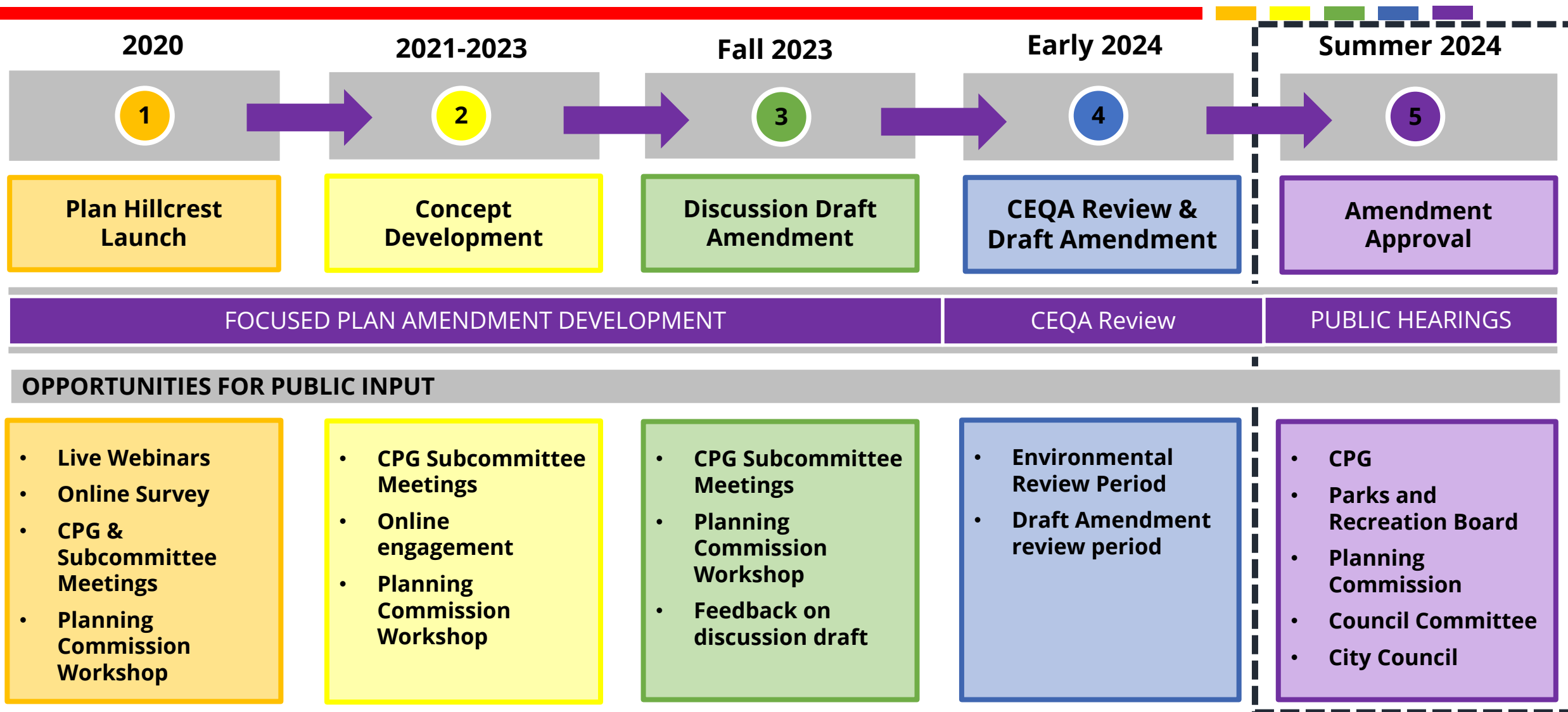
The logo for PLAN HILLCREST features the word "PLAN" in a light grey, sans-serif font above the word "HILLCREST" in a bold, dark grey, sans-serif font. To the left of the text is a vertical bar composed of seven thin, parallel lines in the colors of the rainbow: red, orange, yellow, green, blue, indigo, and violet.

PLAN HILLCREST

Hillcrest Focus Plan Area

Draft Overview

Plan Hillcrest Timeline



Hillcrest Focused Plan Amendment Objectives

**Celebrate
the Legacy
of the
LGBTQ+
Community**

**Preserve
historical
resources
and create
inclusive
spaces**



**Create
Public
Spaces &
Parks**

**Connect
people to
businesses,
services, and
places to
recreate**



**Strengthen
Connections**

**Make it easier
to move
around and
access**



**Support
Local
Business**

**Ensure a
thriving and
sustainable
business
district**



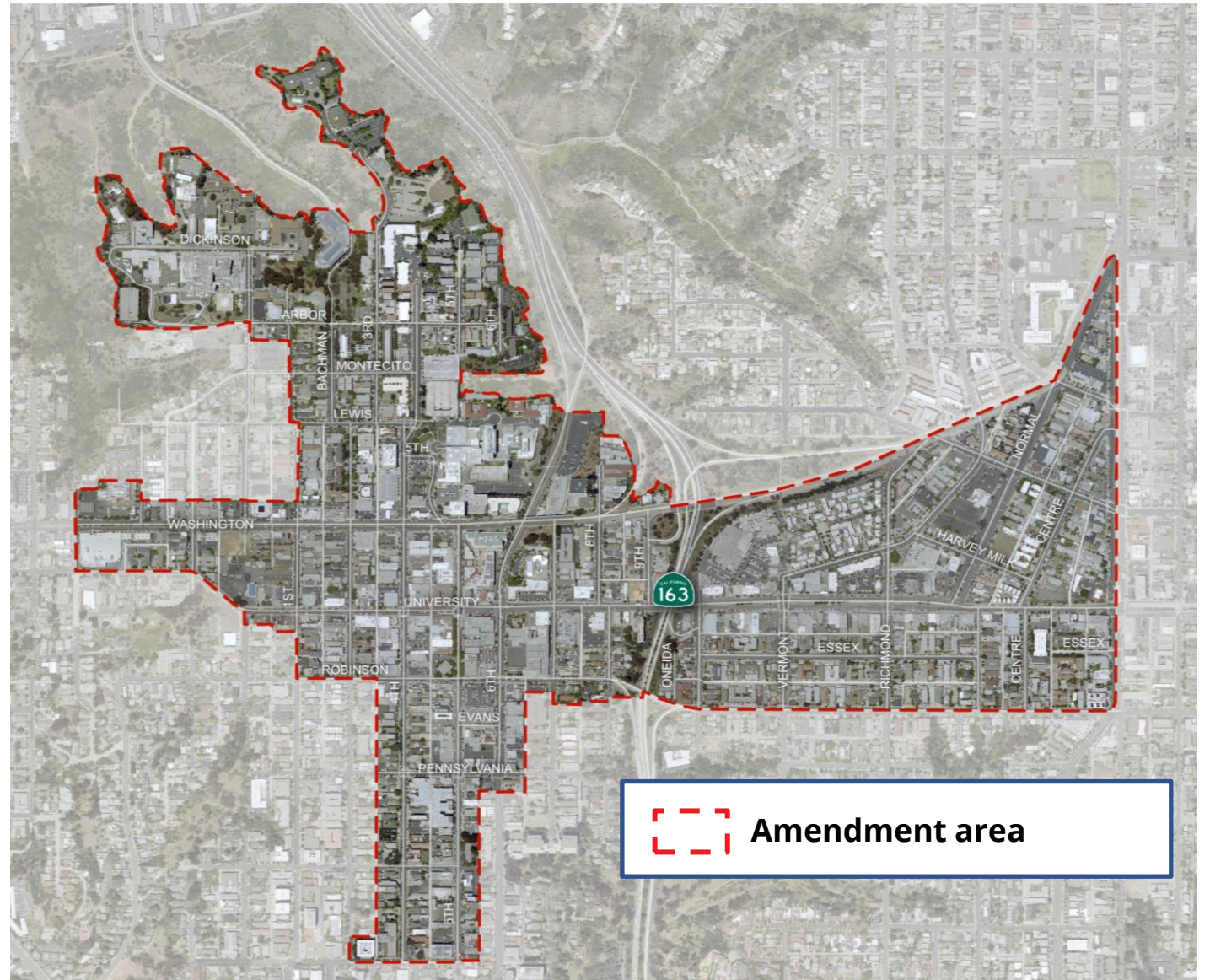
**Address
Housing
Needs**

**Increase
housing
opportunities
near transit**



Plan Hillcrest Overview

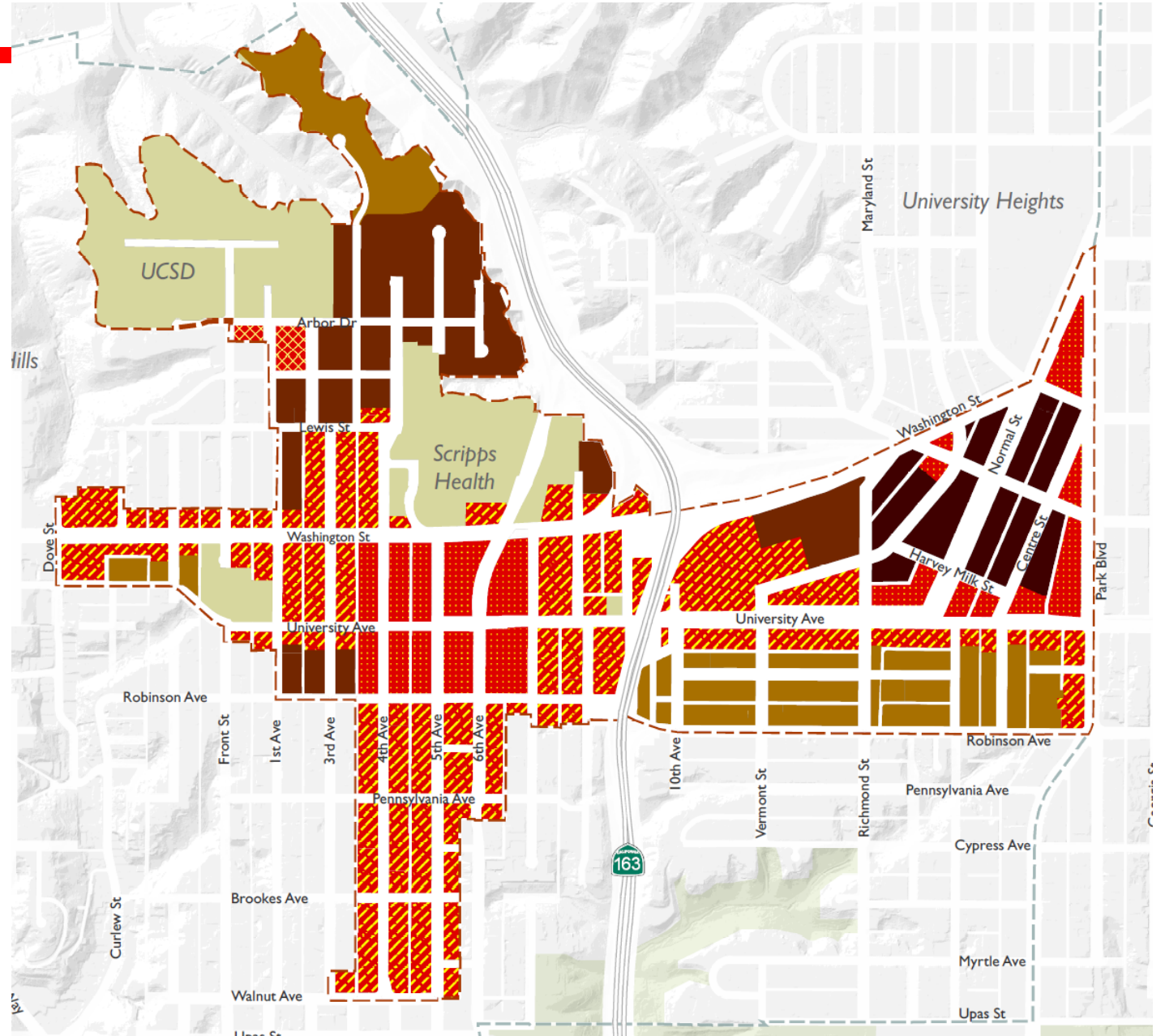
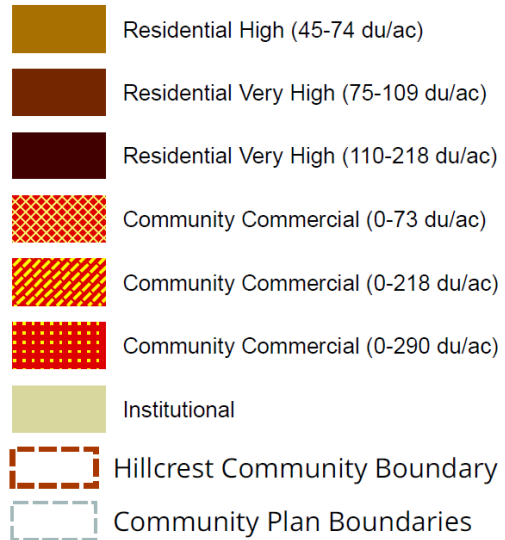
- Amend the Uptown Community Plan (2016)
- Address the broader Hillcrest Neighborhood
- Identify housing opportunities, and mobility/public space enhancements that connect the community



Land Use

- **Additional opportunity for around 17,000 new homes**

Proposed Land Use Map



Recreation Element Amendments

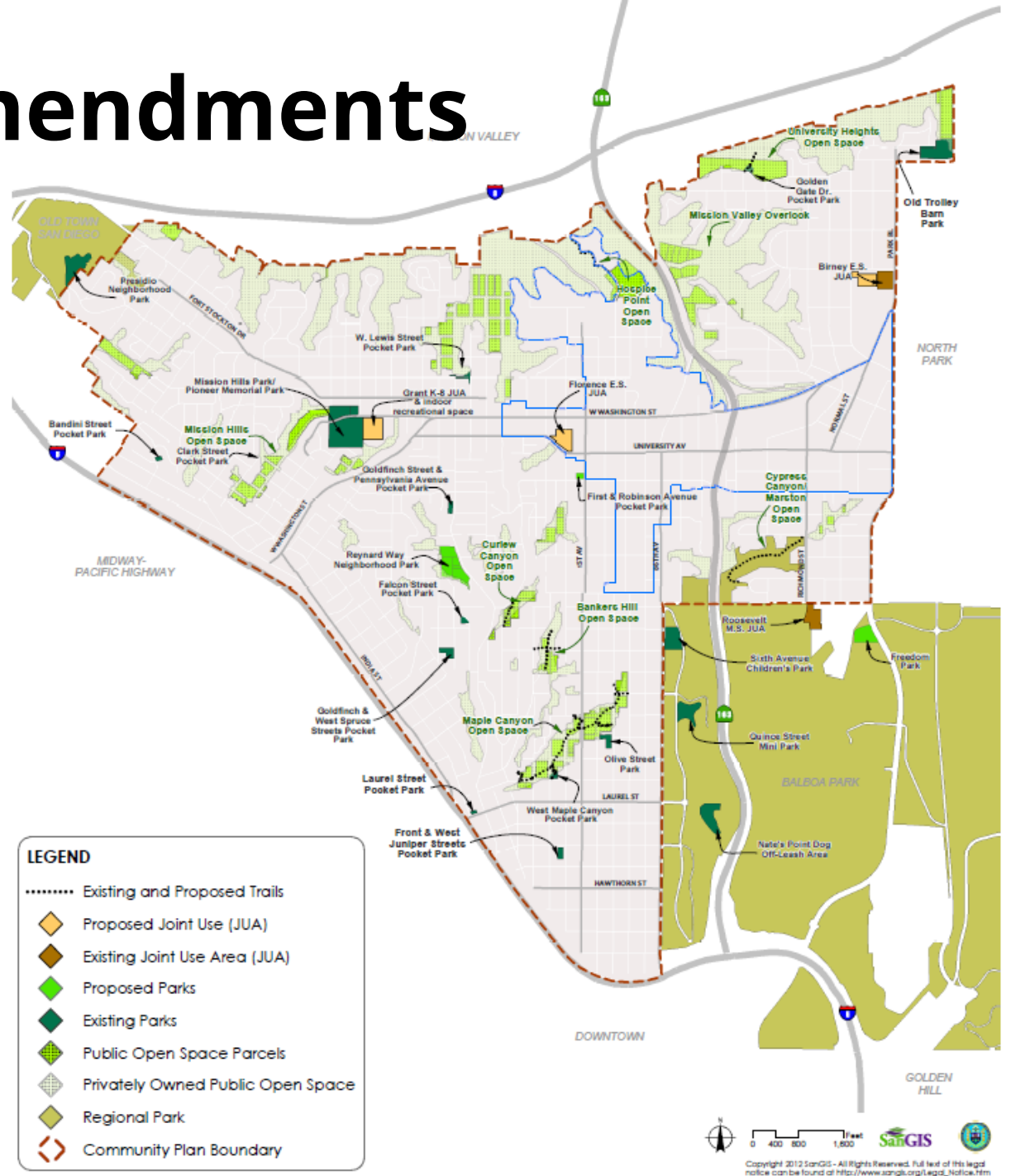
Consistency with Parks Master Plan:

- Recreational Value Standard
- Park Typologies

Update Recreational Value Points of Existing and Planned Parks in Relation to Projected Population

Update Policies Addressing How Parks are Planned and Implemented

- Supplemental Development Regulations

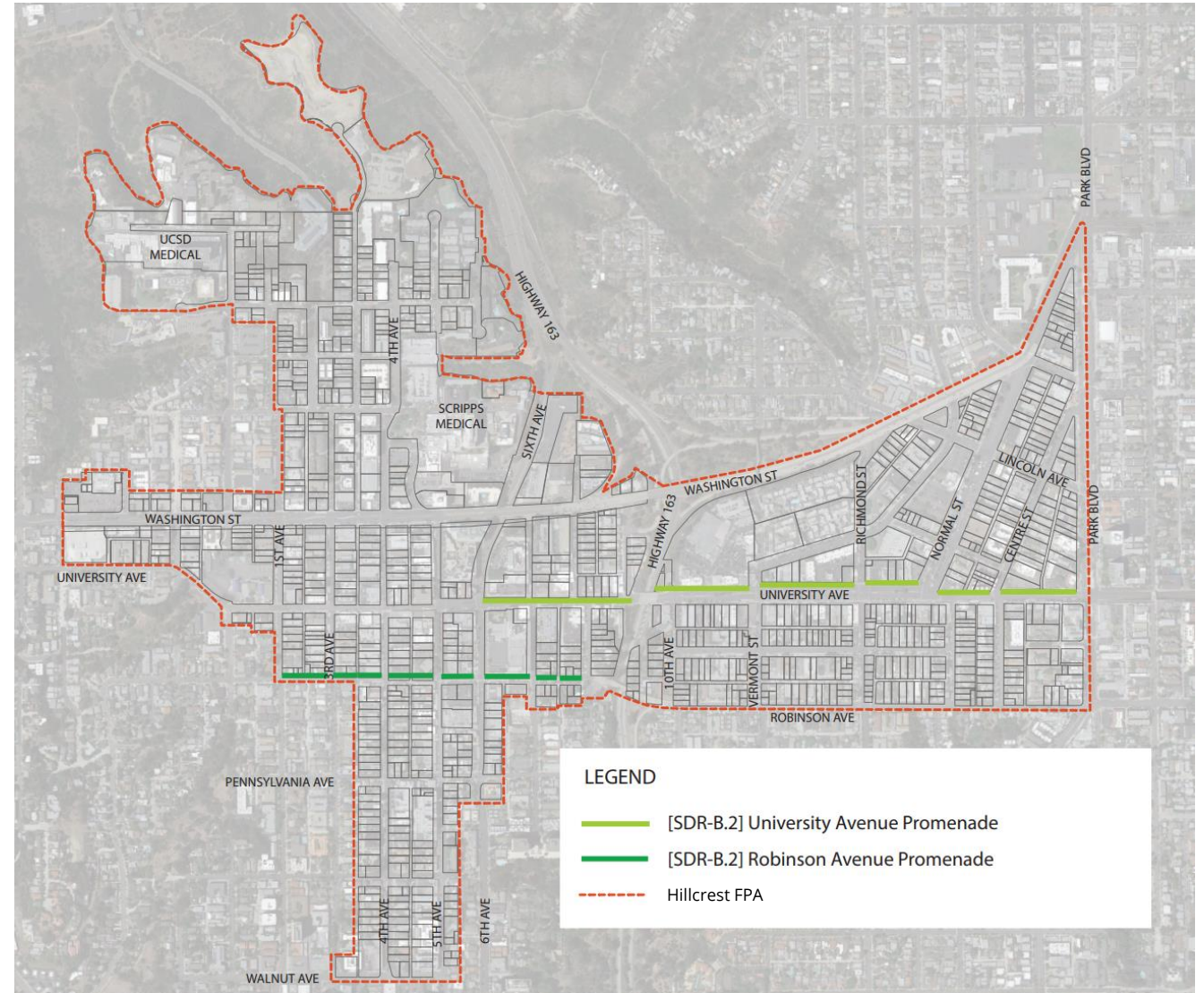


Community Recreational Value

Existing and Planned Parks and Recreation Facilities Community Summary	
Statistics - 2021 Population	
Total Population:	50,593
Recreation Value Points Goal, 100 points per thousand:	5,059
Current Recreation Value Points:	978
2050 Population, Planned Facilities Built	
Projected 2050 Population	109,800
Recreation Value Points Goal, 100 points per thousand:	10,980
Current Recreation Value Points:	978
Planned Additional Recreation Value Points:	3,315
Current + Planned Recreation Value Points Total:	4,293

Community Plan Implementation Overlay Zone

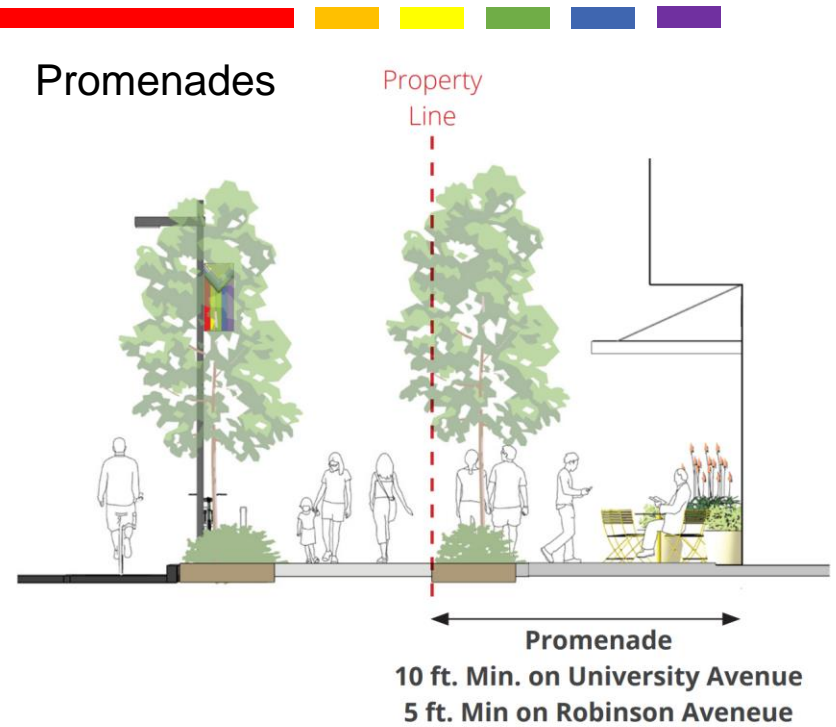
- **General Regulations for Public Spaces & Promenades**
- **University and Robinson Avenue Promenades**



Community Plan Implementation Overlay Zone

Revised Public Spaces and Promenade Supplemental Development Regulations:

- Public Spaces
- Revised the width requirement for University Avenue and Robinson Avenue Promenades



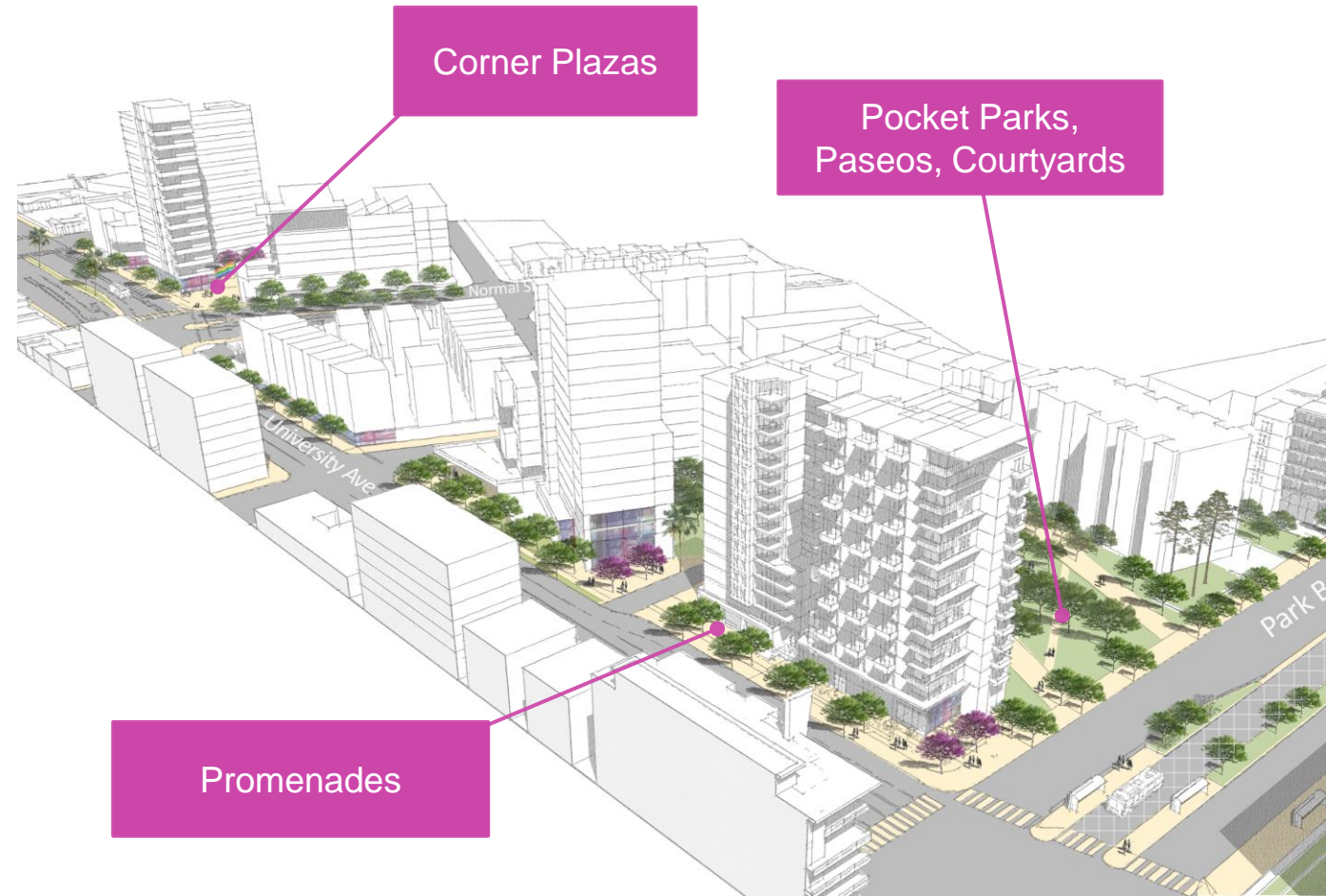
Developer Built Public Spaces



Public Spaces Developed Per
General Development Plan
Process

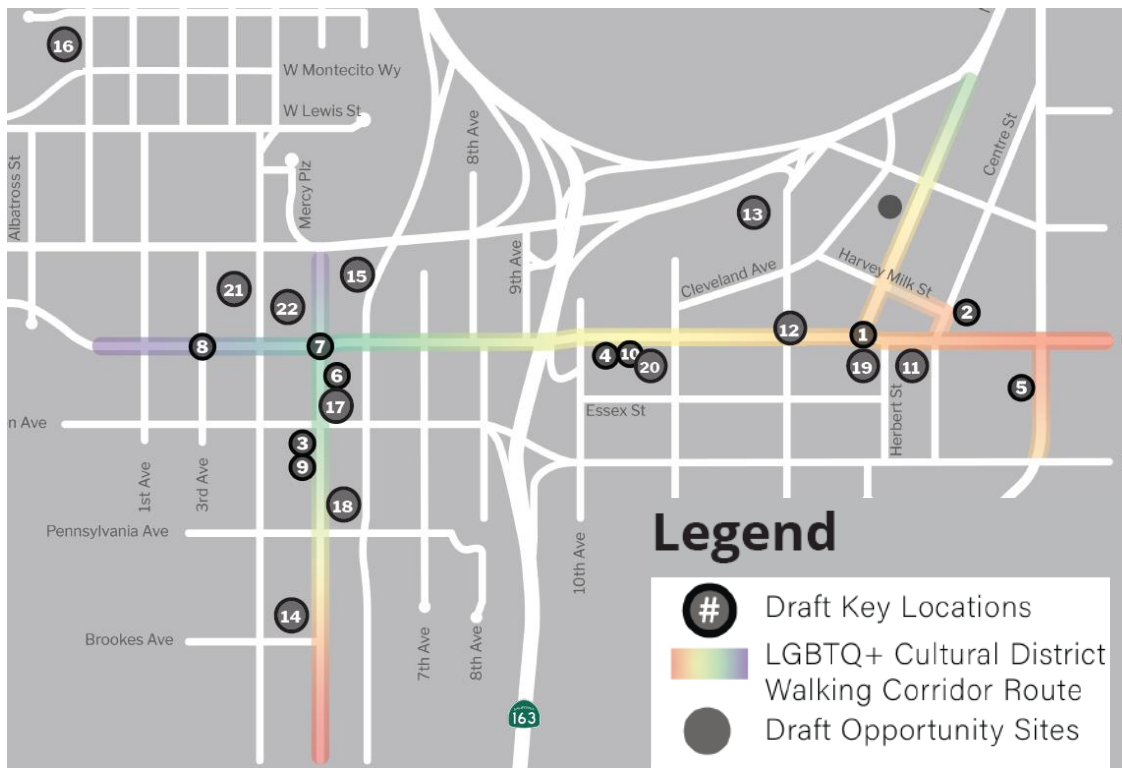


SDR Compliance,
Development Impact Fee
Reduction and New Public
Parkland



LGBTQ+ Cultural District

- Updated Walking Corridor Map
- Strengthened Policies




5

LGBTQ + CULTURE

- 5.1 LGBTQ+ CULTURAL DISTRICT
- 5.2 HISTORY + CULTURE
- 5.3 OUTREACH + STORIES
- 5.4 INTERPRETIVE ELEMENTS
- 5.5 WALKING CORRIDOR MAP + SITES
- 5.6 POLICY

Recommendation

Recommend to the City Council approval of a resolution adopting the Hillcrest Focused Plan Amendment to the Uptown Community Plan and General Plan



PLAN
HILLCREST

Uptown
Community Plan

