



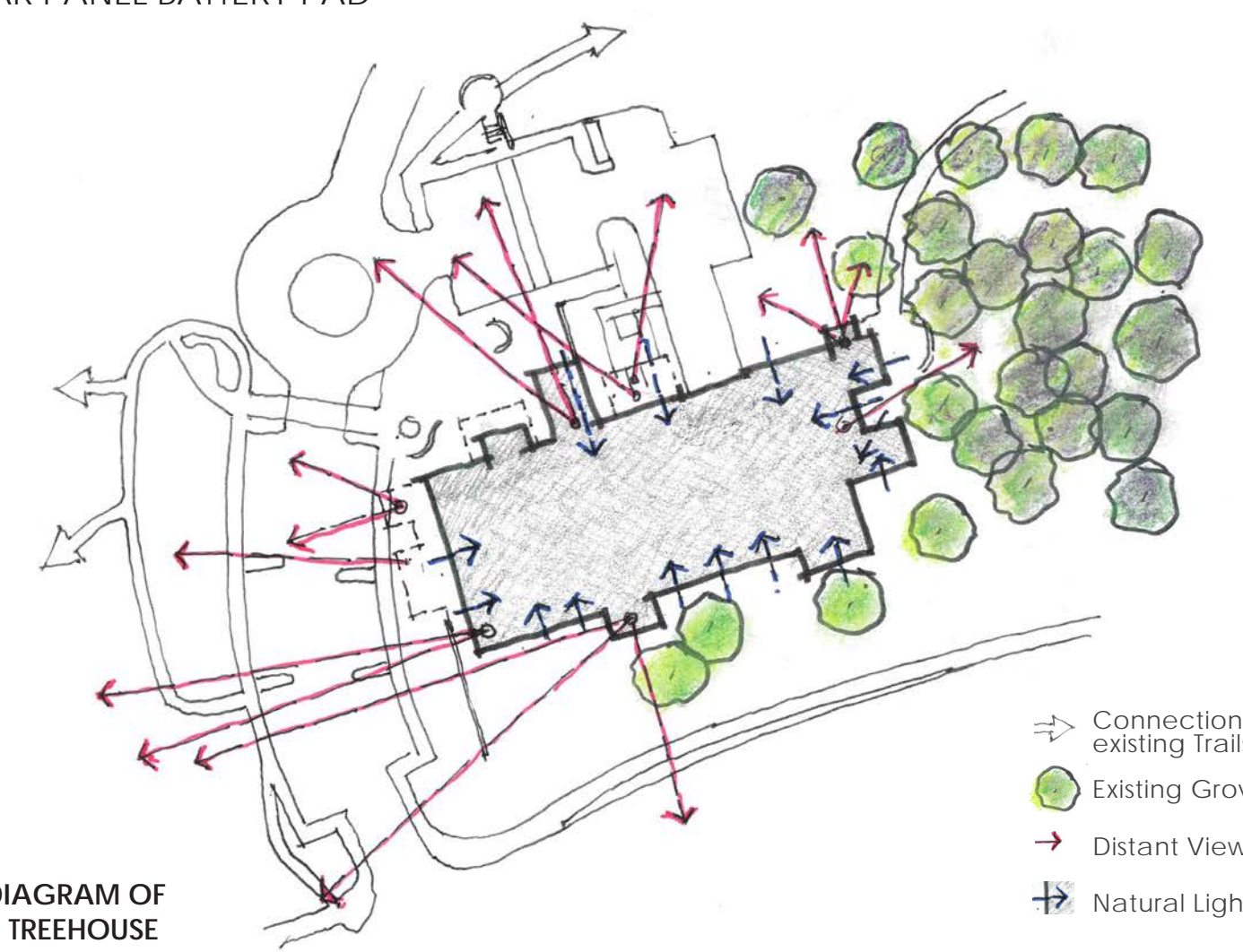
Oak Park Library
Treehouse at the Park



SITE PLAN AND ROOF PLAN

LEGEND * VALUE ADDED ENHANCEMENTS

- 1 EXISTING SIDEWALK CONNECTION
- 2 INTERSECTION TRAFFIC IMPROVEMENTS AND CURB RAMPS
- 3 DRIVEWAY AND PARKING SPACES WITH SECURITY LIGHTING
- 4 LIBRARY MONUMENT SIGN
- 5 ENHANCED ENTRY PLANTING SURROUNDING MONUMENT SIGN
- 6 CONCRETE SIDEWALK (5' WIDE) WITH SECURITY PATHWAY LIGHTING * ACCESSIBLE PATH FROM COLLEGE GROVE DRIVE TO LIBRARY
- 7 UNDERGROUND STORM WATER STORAGE TREATMENT & UTILITY CONNECTIONS (AREAS OF DISTURBANCE TO BE REPAIRED/REPLACED)
- 8 STORM WATER TREATMENT PLANTED BASIN
- 9 CROSSWALK SPEED TABLE, ENHANCED PAVING
- 10 ROUND ABOUT PLANTING AREA WITH SPECIMEN NATIVE OAK TREE
- *11 WAYFINDING SIGN
- 12 PLAZA DROP-OFF WITH SAFETY LIGHT BOLLARDS
- 13 ACCESSIBLE PARKING LOT WITH SECURITY LIGHTS AND SHADE TREES
- *14 ENHANCED COLORED PAVING AT OBSERVATORY PLAZA AND CROSSWALK CONNECTION TO EXISTING PARK TRAILS
- *15 OBSERVATORY PLAZA AND NORTH TRAILHEAD SIGNAGE
- 16 BICYCLE PARKING 20 TOTAL, 4 RACKS AT NORTH TRAILHEAD AND 6 BELOW ROOF NORTHWEST BUILDING CORNER
- 17 CONNECTION TO EXISTING PARK TRAILS, STABILIZED DECOMPOSED GRANITE SURFACING
- 18 BOOK DROP KIOSK
- 19 PLAZA WITH COBBLESTONE VENEER LOW WALLS AND ENHANCED PAVING DEPICTING CHOLLAS CREEK WATERSHED PATTERN, EXPOSED BY SANDBLASTED SEEDED AGGREGATES WITH PLAQUE(S) SET IN PAVING DESCRIBING OUR REGION'S WATERSHED
- *20 INTERIOR | EXTERIOR ART MURALS
- 21 LIBRARY PUBLIC ENTRANCE
- 22 MOVABLE COFFEE CART AND OUTDOOR TABLES IN PLAZA
- 23 LOADING DOCK DRIVEWAY
- *24 OUTDOOR CHILDREN'S GATHERING SPACE WITH LOW COBBLESTONE WALL, STABILIZED DECOMPOSED GRANITE SURFACING AND SECURITY LIGHTING
- *25 LIBRARY STAFF GARDEN WITH CONCRETE PAVING, TABLES AND GARDEN BENCHES
- 26 TRASH ENCLOSURE
- 27 ELECTRICAL UTILITY PAD
- *28 OVERLOOK POCKET PARK WITH PICNIC TABLE, GARDEN BENCHES, INTERPRETIVE SIGNAGE AND SECURITY LIGHTING
- 29 STABILIZED DECOMPOSED GRANITE TRAIL, 4' MINIMUM WIDTH
- 30 EXISTING TREES / LARGE NATIVE SHRUBS TO BE PROTECTED
- 31 PLANTING WITH TREES AND SOUTHERN CALIFORNIA NATIVE PLANTS, TYPICAL FOR NEW PLANTING AREAS
- 32 CONCEPTUAL SOLAR CANOPY LAYOUT TO BE COORDINATED WITH AND PROVIDED BY CITY VENDOR. (SOLAR ZONE)
- 33 EV (PROVIDED ELECTRICAL CHARGING STATION PARKING SPACES) TWO DESIGNATED PARKING SPACES FOR CITY TRUCKS.
- 34 EVR (FUTURE EV READY PARKING SPACES)
- 35 SKYLIGHT - TRANSLUCENT GLASS
- 36 SOLAR PANEL BATTERY PAD



CONCEPT DIAGRAM OF CHILDREN'S TREEHOUSE



1 Entry at College Grove Drive expressing the community identity of the building.



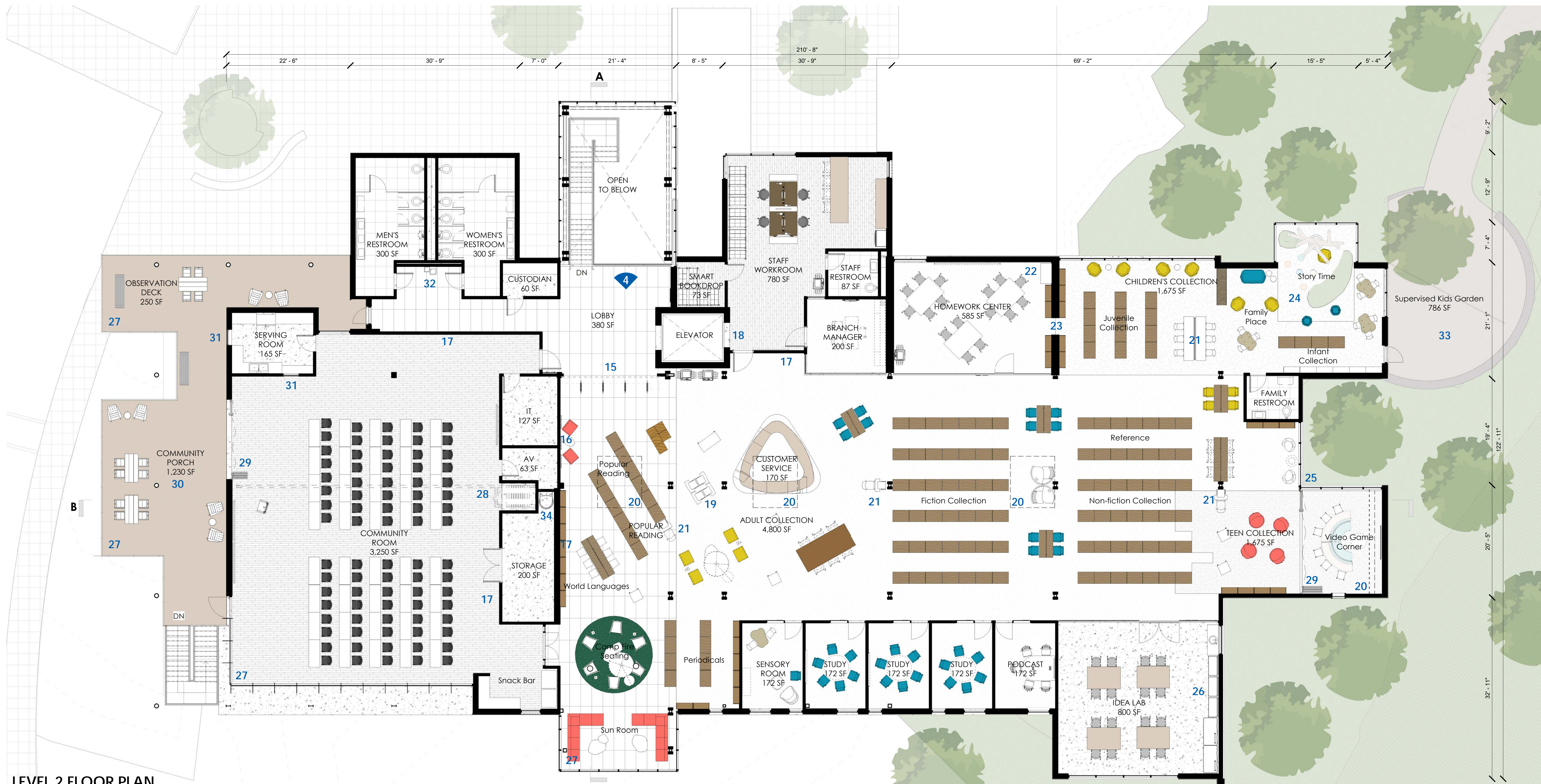
2 Recessed into the Plaza, an aerial view of Chollas Creek watershed is etched into the concrete symbolizing unity with the park.



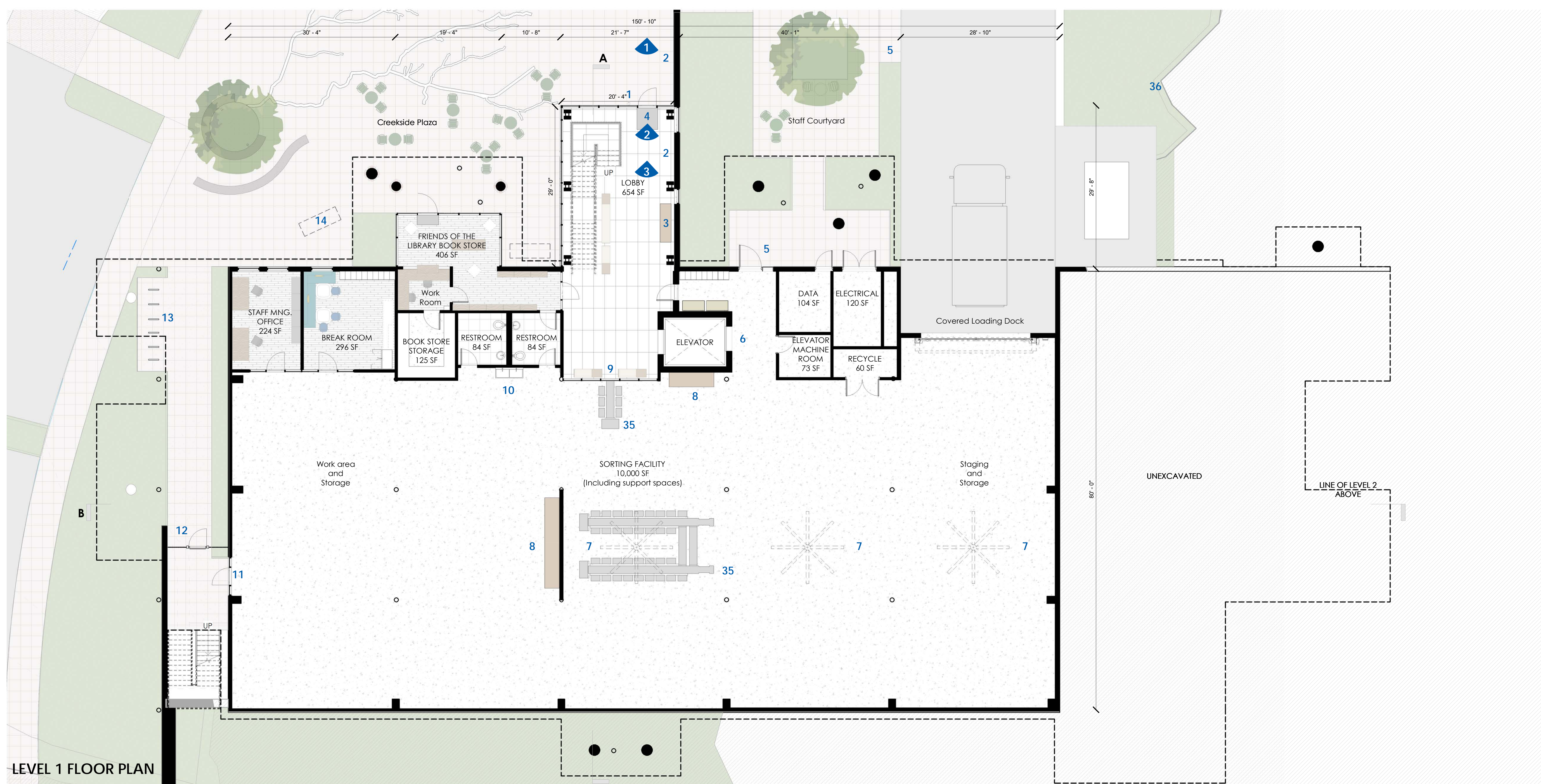
3 A multi-purpose Pocket Park serves as a link between the existing trails, the neighborhood and the library.



4 An outdoor gathering space off of the Children's area exit is nestled into the hillside and grove.



LEVEL 2 FLOOR PLAN



LEVEL 1 FLOOR PLAN

- LEGEND * VALUE ADDED ENHANCEMENTS**
- 1 ADA DOOR OPENER
 - 2 INTERIOR | EXTERIOR ART MURALS
 - 3 ARTIFACT DISPLAY CASE
 - 4 ENTRY WALK-OFF MAT
 - 5 STAFF DEDICATED ENTRY
 - *6 ELEVATOR SERVICE ACCESS TO STAFF WORKROOM
 - *7 OVERHEAD FANS
 - 8 STAFF WORK BENCH
 - *9 PATRON INTERACTION WITH SORTING FACILITY/ BOOK DROP
 - 10 STAFF HAND SINK
 - 11 SECURED STOREFRONT ENTRY WITH OPERABLE TRANSOM
 - 12 LOCKED GATE ACCESS
 - 13 BICYCLE RACKS
 - 14 MOVABLE COFFEE STATION
 - 15 RFID & ROLL-UP SECURITY GATE
 - 16 DONOR WALL
 - 17 PUBLIC ART DISPLAY
 - 18 SERVICE ACCESS TO SORTING & STAFF ENTRY
 - 19 SELF-CHECKOUT KIOSKS
 - *20 SKYLIGHT ABOVE
 - 21 OPAC STATIONS
 - 22 AV STORAGE CLOSET
 - 23 PORTAL TO HOMEWORK CENTER
 - *24 STORY TIME TREE & SEATING MOUNDS
 - *25 NATURAL LIGHT TEEN ALCOVE
 - 26 IDEA LAB TOOLS FOR RENT
 - 27 VIEW TO DOWNTOWN SAN DIEGO
 - 28 MOVABLE PARTITION
 - *29 FOLDING GLASS DOOR
 - 30 LARGE COMMUNITY PORCH WITH RFP REQUIREMENTS FOR POWER, AV & SOUND SYSTEM
 - 31 COMMUNITY FOOD SERVICE WINDOW
 - 32 DRINKING FOUNTAIN
 - *33 CHILDREN'S AREA PATIO
 - 34 ROOF ACCESS LADDER
 - 35 SORTING MACHINE
 - 36 SOLAR PANEL BATTERY PAD



1 The multi-cultural mural wall, curated by local artists draws you into the main entrance of the Library. A place that will serve the community.



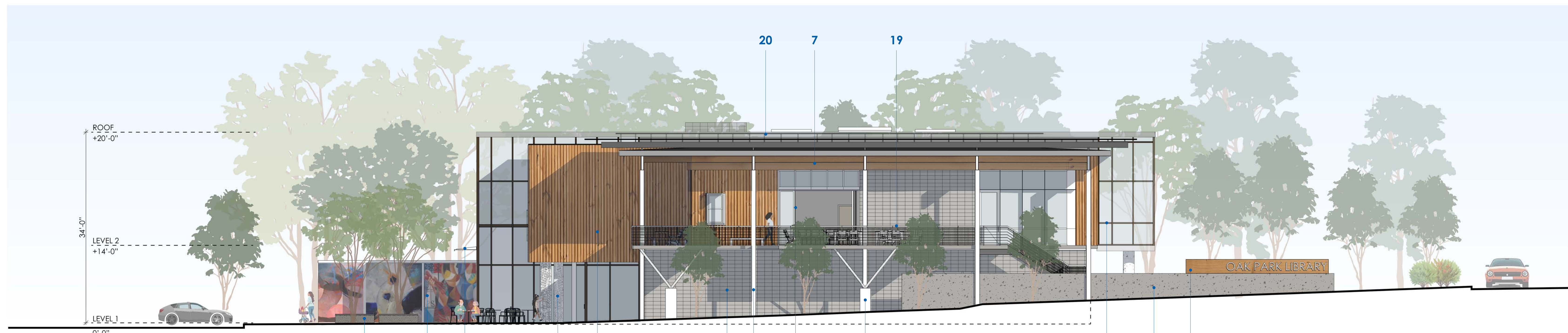
2 Upon entering, an interactive slate board for children and children at heart to express themselves welcomes you to the lobby.
3 The first level lobby will be a hub of activities with a community bulletin board and an opportunity to look into the sorting facility.



4 A view from the second floor, displaying the art wall coming into the lobby and District 7 historical mural in the foreground.



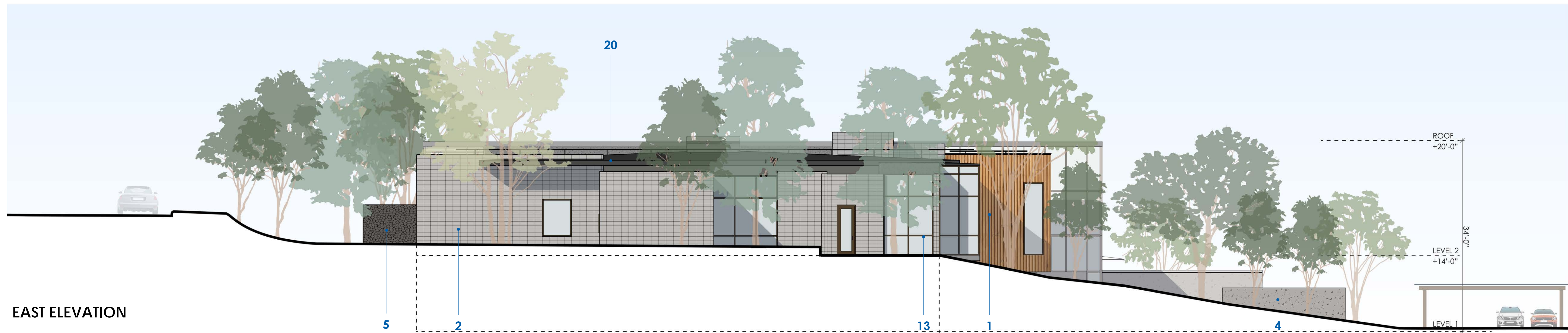
SOUTH ELEVATION



WEST ELEVATION

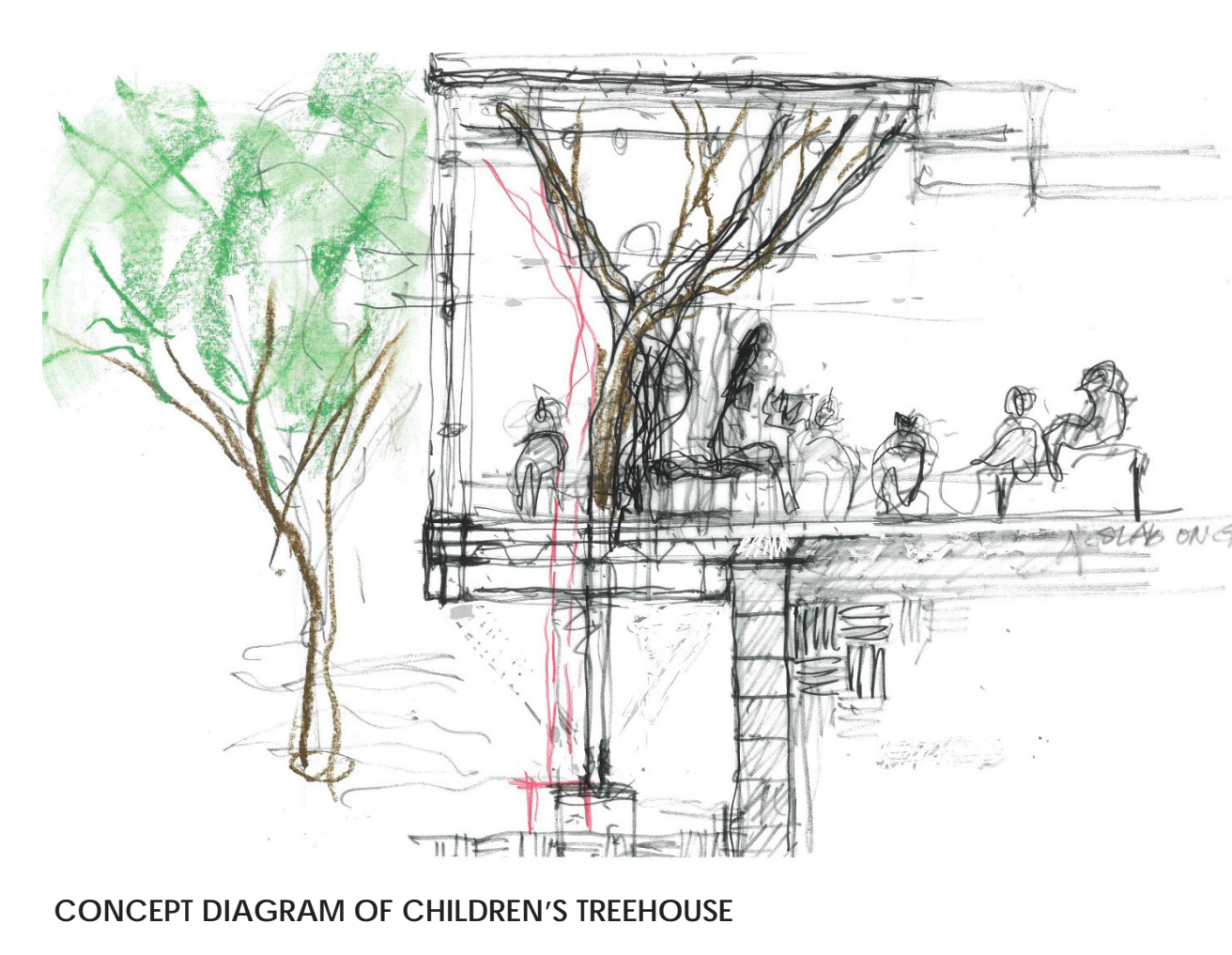


NORTH ELEVATION



EAST ELEVATION

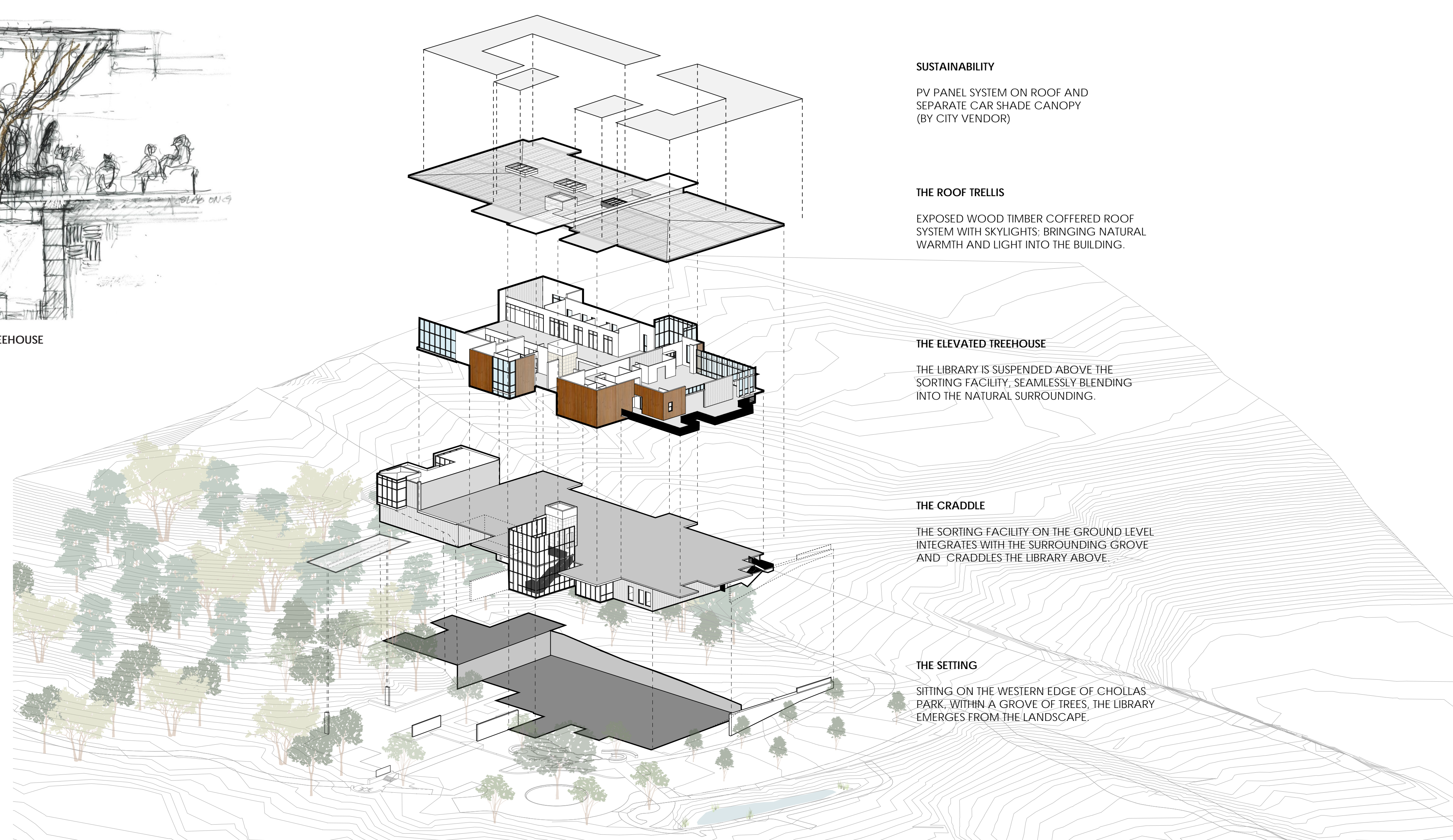
- LEGEND * VALUE ADDED ENHANCEMENTS**
- *1 EXTERIOR COMPOSITE WOOD STYLE PANELING
 - 2 CMU WALL - STACKED BOND APPEARANCE
 - 3 EXTERIOR STUCCO, PAINTED GREY
 - 4 C.I.P. CONCRETE WALL
 - *5 RETAINING STONE WALL, MATCH PARK CONTEXT SITE WALLS
 - *6 INTERIOR | EXTERIOR ART MURALS
 - *7 HEAVY TIMBER BEAMS
 - *8 C.I.P. CONCRETE COLUMN - FORMED WORDS
 - 9 C.I.P. CONCRETE COLUMN
 - 10 STEEL COLUMN - WHITE FINISH
 - *11 CONCRETE AND STEEL "TREE COLUMN"
 - 12 STEEL MOMENT FRAME - WHITE FINISH
 - 13 ALUMINUM MULLION - CHAMPAGNE
 - *14 ALUMINUM VERTICAL FINS - WHITE
 - 15 SHEET METAL OVERHANG
 - 16 ROLL-UP GARAGE DOOR WITH LITES
 - *17 FOLDING GLASS DOOR TO COMMUNITY PORCH
 - 18 LIBRARY SIGNAGE
 - 19 STEEL GRATING AT RAILING
 - 20 CONCEPTUAL SOLAR CANOPY LAYOUT TO BE COORDINATED WITH AND PROVIDED BY CITY VENDOR. (SOLAR ZONE)

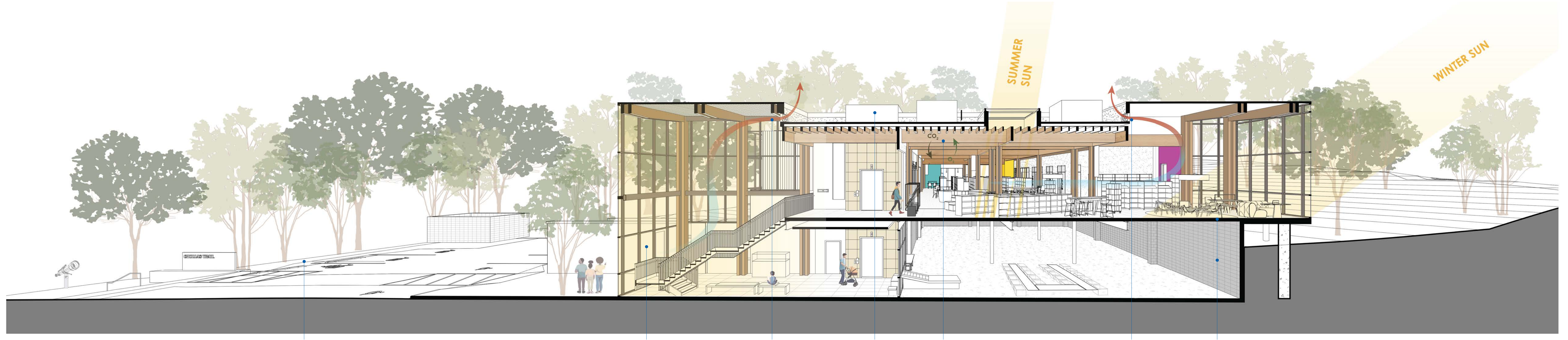


- SUSTAINABILITY**
- PV PANEL SYSTEM ON ROOF AND SEPARATE CAR SHADE CANOPY (BY CITY VENDOR)
- THE ROOF TRELLIS**
- EXPOSED WOOD TIMBER COFFERED ROOF SYSTEM WITH SKYLIGHTS, BRINGING NATURAL WARMTH AND LIGHT INTO THE BUILDING.
- THE ELEVATED TREEHOUSE**
- THE LIBRARY IS SUSPENDED ABOVE THE SORTING FACILITY, SEAMLESSLY BLENDING INTO THE NATURAL SURROUNDING.
- THE CRADLE**
- THE SORTING FACILITY ON THE GROUND LEVEL INTEGRATES WITH THE SURROUNDING GROVE AND "CRADLES" THE LIBRARY ABOVE.
- THE SETTING**
- SITING ON THE WESTERN EDGE OF CHOLLAS PARK, WITHIN A GROVE OF TREES, THE LIBRARY EMERGES FROM THE LANDSCAPE.



Connections from the existing trails frame views of the Library as you approach.





NORTH - SOUTH BUILDING SECTION PERSPECTIVE A



EAST - WEST BUILDING SECTION PERSPECTIVE B

LEGEND * VALUE ADDED ENHANCEMENTS/ SUSTAINABILITY FEATURES

- *1 STACK VENTILATION
- *2 CARBON SEQUESTERING- HEAVY TIMBER
- *3 LARGE OVERHANG ON WEST FACADE
- *4 THERMAL MASS- AT FLOOR AND CMU WALLS
- 5 EV CHARGING STATIONS
- 6 SOLAR ENERGY
- *7 STORM WATER TREATMENT PLANTED BASIN
- *8 NATURAL DAYLIGHTING
- *9 MECHANICAL WELL WITH VRF UNITS



1 Bookstacks draw users into the library with popular readings highlighted by the skylight with a Donor's wall to the right.



2 The warm and inviting heavy timber wood ceiling with skylights above highlights the customer service desk, adult collection, and manager's office with soft natural light.



3 In the Juvenile collection area, a large north facing window gathers indirect natural light and connects the viewer with nature.



4 Bringing the grove inside, a treehouse emerges creating a contemplative and enchanting storytelling space for children to lay under the tree sculpture and look up at the stars.



5 Nestled into the grove, the dappled light creates a cafe like environment creating a unique identity for the teen's space.



6 With access to tools like 3d printers, laser cutters, embroidery machines and more, the Maker Lab is where ideas grow into reality.



7 Soft natural light from the skylights are filtered through the heavy timber ceiling above the Adult collection work stations.



8 A comfortable space for periodicals and casual reading with a distant downtown San Diego skyline view.



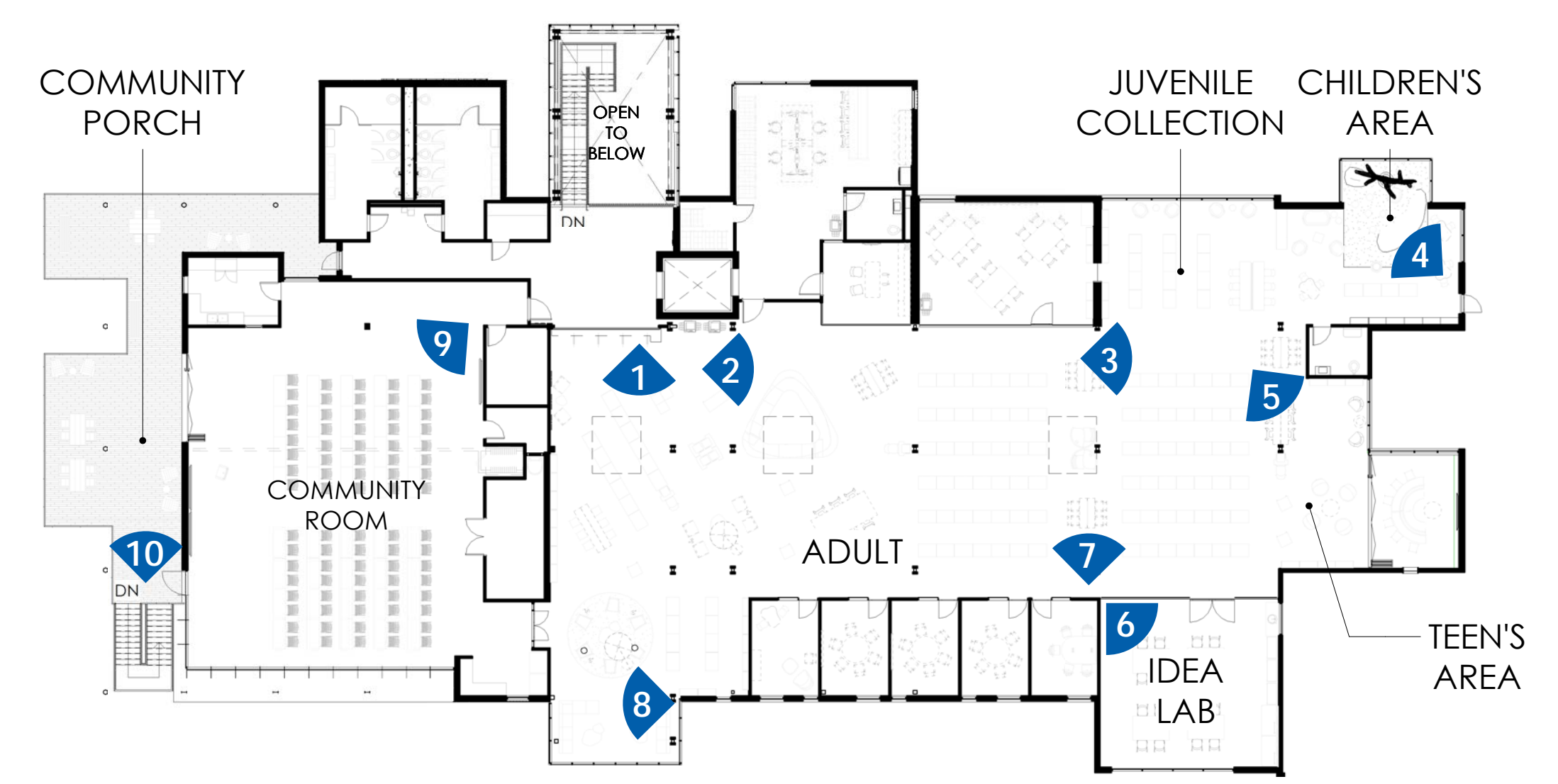
9 In the community room, connection to the outdoors with large openings to the community porch bring in natural light and fresh air.



10 A large multi-purpose community porch oriented towards the distant western views of the Downtown San Diego skyline.



11 At the north trailhead is a small observatory plaza with opportunities for after-hours stargazing.



LEVEL 2 - KEY PLAN

