

**CITY OF SAN DIEGO  
FACILITIES FINANCING PROGRAM**

Title: **EMERSON/BANDINI ELEMENTARY SCHOOL--JOINT USE DEVELOPMENT**

Department: Park & Recreation

Project: P-24

Council District: 8,9

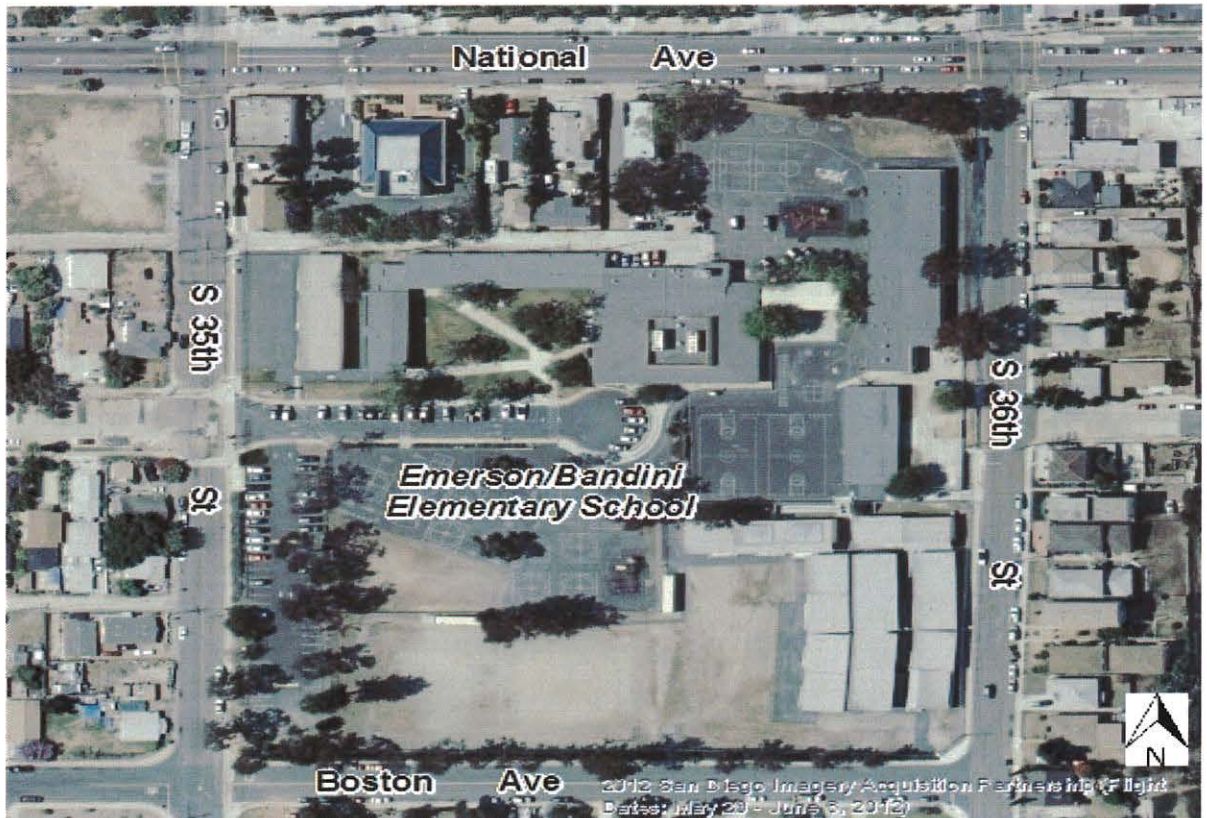
CIP/WBS #:

Community Plan: Southeastern San Diego

**Description:** This project provides for the design and construction of approximately 3.70 acres at Emerson Elementary School for a Joint Use facility to supplement existing park acreage in the Southeastern San Diego Community. Joint Use improvements could include turf-ed multi-use sports fields, multi-purpose courts, walkways, and landscaping.

**Justification:** This project is in conformance with the Southeastern San Diego Community Plan and is consistent with the City's General Plan Guidelines for population-based park and recreation facilities and is needed to serve the community at full buildout.

**Schedule:** This project will be subject to the execution of a Joint Use Agreement with the San Diego Unified School District. Design and construction will be scheduled when funding is identified.



FUNDING:	SOURCE	EXPEN/ENCUM	CONT APPR	FY 2016	FY 2017	FY 2018	FY 2019	FY 2020	FY 2021
\$2,607,625	UNIDEN			\$0	\$0	\$0	\$0	\$0	\$0
<b>\$2,607,625</b>	<b>TOTAL</b>	\$0	\$0	\$0	\$0	\$0	\$0	\$0	\$0



**CITY OF SAN DIEGO  
FACILITIES FINANCING PROGRAM**

Title: **BAKER ELEMENTARY SCHOOL--JOINT USE DEVELOPMENT**

Department: Park & Recreation

Project: P-25

Council District: 8,9

CIP/WBS #:

Community Plan: Southeastern San Diego

**Description:** This project provides for the design and construction of approximately 2.25 acres at Baker Elementary School for a Joint Use facility to supplement existing park acreage in the Southeastern San Diego Community. Joint Use improvements could include turf-ed multi-use sports fields, multi-purpose courts, walkways, and landscaping.

**Justification:** This project is in conformance with the Southeastern San Diego Community Plan and is consistent with the City's General Plan Guidelines for population-based park and recreation facilities and is needed to serve the community at full buildout.

**Schedule:** This project will be subject to the execution of a Joint Use Agreement with the San Diego Unified School District. Design and construction will be scheduled when funding is identified.



FUNDING:	SOURCE	EXPEN/ENCUM	CONT APPR	FY 2016	FY 2017	FY 2018	FY 2019	FY 2020	FY 2021
\$1,587,677	UNIDEN								
\$1,587,677	TOTAL	\$0	\$0	\$0	\$0	\$0	\$0	\$0	\$0



**CITY OF SAN DIEGO  
FACILITIES FINANCING PROGRAM**

Title: **LOGAN ELEMENTARY SCHOOL--JOINT USE DEVELOPMENT**

Department: Park & Recreation

Project: P-26

Council District: 8,9

CIP/WBS #:

Community Plan: Southeastern San Diego

**Description:** This project provides for the design and construction of approximately 2.70 acres at Logan Elementary School for a Joint Use Facility to supplement existing park acreage in the Southeastern San Diego Community. Joint Use improvements could include turfed multi-use sports fields, multi-purpose courts, walkways, and landscaping.

**Justification:** This project is in conformance with the Southeastern San Diego Community Plan and is consistent with the City's General Plan Guidelines for population-based park and recreation facilities and is needed to serve the community at full buildout.

**Schedule:** This project will be subject to the execution of a Joint Use Agreement with the San Diego Unified School District. Design and construction will be scheduled when funding is identified.



FUNDING:	SOURCE	EXPEN/ENCUM	CONT APPR	FY 2016	FY 2017	FY 2018	FY 2019	FY 2020	FY 2021
\$1,977,259	UNIDEN								
<b>\$1,977,259</b>	<b>TOTAL</b>	\$0	\$0	\$0	\$0	\$0	\$0	\$0	\$0



**CITY OF SAN DIEGO  
FACILITIES FINANCING PROGRAM**

Title: **BALBOA ELEMENTARY SCHOOL--JOINT USE DEVELOPMENT**

Department: Park & Recreation

Project: P-27

Council District: 8,9

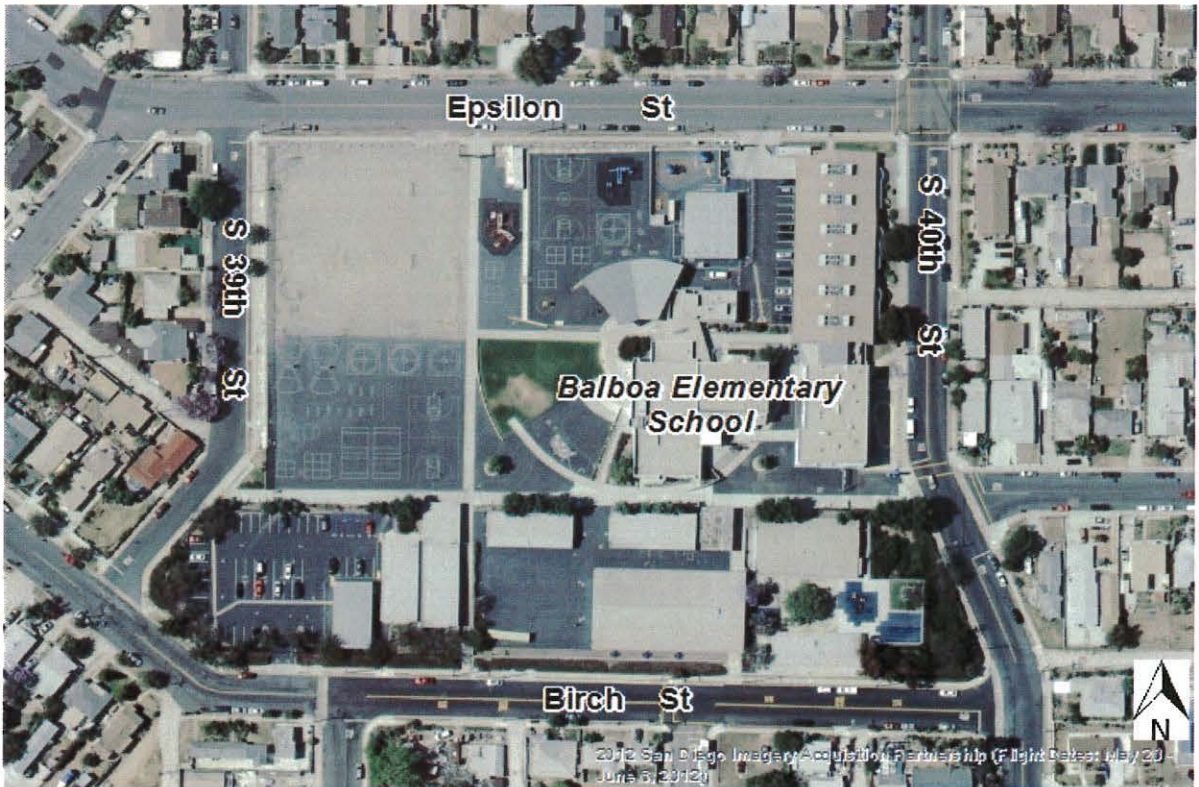
CIP/WBS #:

Community Plan: Southeastern San Diego

**Description:** This project provides for the design and construction of approximately 2.20 acres at Balboa Elementary School for a Joint Use facility to supplement existing park acreage in the Southeastern San Diego Community. Joint Use improvements could include turfed multi-use sports fields, multi-purpose courts, walkways, and landscaping.

**Justification:** This project is in conformance with the Southeastern San Diego Community Plan and is consistent with the City's General Plan Guidelines for population-based park and recreation facilities and is needed to serve the community at full buildout.

**Schedule:** This project will be subject to the execution of a Joint Use Agreement with the San Diego Unified School District. Design and construction will be scheduled when funding is identified.



FUNDING:	SOURCE	EXPEN/ENCUM	CONT APPR	FY 2016	FY 2017	FY 2018	FY 2019	FY 2020	FY 2021
\$1,612,026	UNIDEN			\$0	\$0	\$0	\$0	\$0	\$0
<b>\$1,612,026</b>	<b>TOTAL</b>	\$0	\$0	\$0	\$0	\$0	\$0	\$0	\$0



**CITY OF SAN DIEGO  
FACILITIES FINANCING PROGRAM**

Title: **BURBANK ELEMENTARY SCHOOL--JOINT USE DEVELOPMENT**

Department: Park & Recreation

Project: P-28

Council District: 8,9

CIP/WBS #:

Community Plan: Southeastern San Diego

**Description:** This project provides for the design and construction of approximately 1.70 acres at Burbank Elementary School for a Joint Use Facility to supplement existing park acreage in the Southeastern San Diego Community. Joint Use improvements could include turfed multi-use sports fields, multi-purpose courts, walkways, and landscaping.

**Justification:** This project is in conformance with the Southeastern San Diego Community Plan and is consistent with the City's General Plan Guidelines for population-based park and recreation facilities and is needed to serve the community at full buildout.

**Schedule:** This project will be subject to the execution of a Joint Use Agreement with the San Diego Unified School District. Design and construction will be scheduled when funding is identified.



FUNDING:	SOURCE	EXPEN/ENCUM	CONT APPR	FY 2016	FY 2017	FY 2018	FY 2019	FY 2020	FY 2021
\$1,246,793	UNIDEN			\$0	\$0	\$0	\$0	\$0	\$0
<b>\$1,246,793</b>	<b>TOTAL</b>	\$0	\$0	\$0	\$0	\$0	\$0	\$0	\$0



**CITY OF SAN DIEGO  
FACILITIES FINANCING PROGRAM**

Title: "G" STREET LINEAR PARK--DEVELOPMENT

Department: Park & Recreation

Project: P-29

Council District: 8,9

CIP/WBS #:

Community Plan: Southeastern San Diego

**Description:** This project will require acquisition, or a lease agreement with Caltrans and will provide for the design and construction of approximately 1.30 usable acres of Caltrans right of way and partial local street vacation located at "G" Street between 22nd and 25th Streets within the community. Park amenities could include: Children's play area, picnic area, turf and landscaping.

**Justification:** This project is in conformance with the Southeastern San Diego Community Plan and is consistent with the City's General Plan Guidelines for population-based park and recreation facilities and is needed to serve the community at full buildout.

**Schedule:** This project may be subject to the execution of a lease agreement with Caltrans for design and construction and will be scheduled when funding is identified.



FUNDING:	SOURCE	EXPEN/ENCUM	CONT APPR	FY 2016	FY 2017	FY 2018	FY 2019	FY 2020	FY 2021
\$2,814,072	UNIDEN								
<b>\$2,814,072</b>	<b>TOTAL</b>	\$0	\$0	\$0	\$0	\$0	\$0	\$0	\$0

**CITY OF SAN DIEGO  
FACILITIES FINANCING PROGRAM**

Title: **ALPHA & 45TH STREET NEIGHBORHOOD PARK--DEVELOPMENT**

Department: Park & Recreation

Project: P-30

Council District: 8,9

CIP/WBS #:

Community Plan: Southeastern San Diego

**Description:** This project will require acquisition, or a lease agreement with Caltrans and will provide for the design and construction of approximately 9.90 usable acres of Caltrans right of way located at Alpha and 45th Street as a result of ramp closure within the community. Park amenities could include: Multi-purpose turfed fields, sports field lighting, children's play area, picnic area, passive use turfed area and landscaping.

**Justification:** This project is in conformance with the Southeastern San Diego Community Plan and is consistent with the City's General Plan Guidelines for population-based park and recreation facilities and is needed to serve the community at full buildout.

**Schedule:** This project may be subject to the execution of a lease agreement with Caltrans for design and construction and will be scheduled when funding is identified.



FUNDING:	SOURCE	EXPEN/ENCUM	CONT APPR	FY 2016	FY 2017	FY 2018	FY 2019	FY 2020	FY 2021
\$14,714,076	UNIDEN								
<b>\$14,714,076</b>	<b>TOTAL</b>	\$0	\$0	\$0	\$0	\$0	\$0	\$0	\$0