

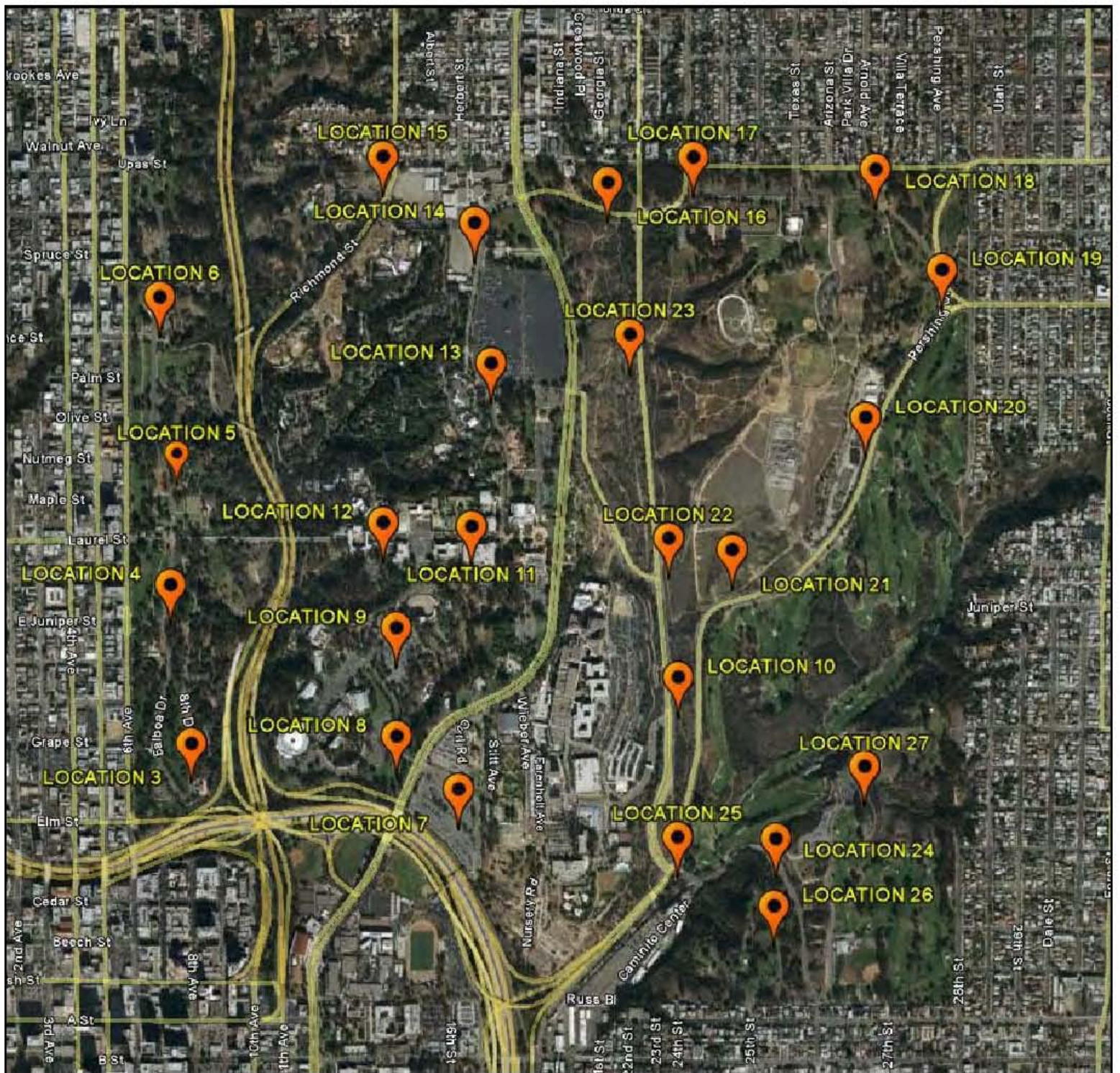


NextG Networks of
California, Inc.

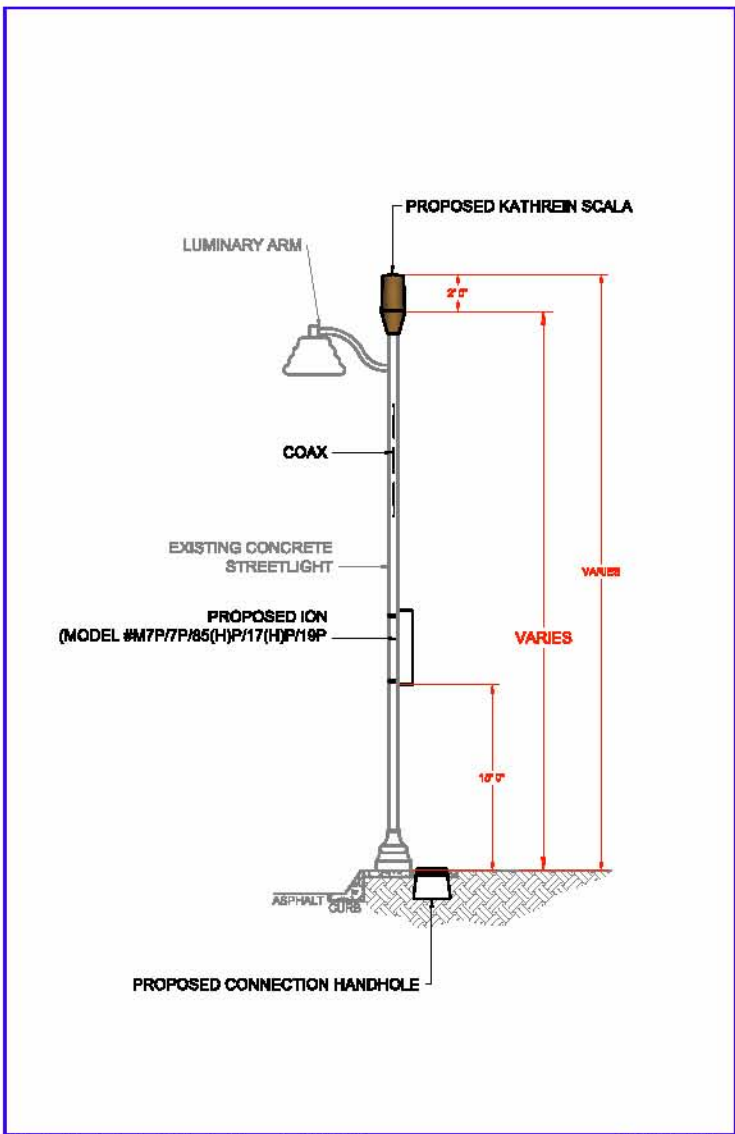
Balboa Park Presentation



COASTAL COMMUNICATIONS
3355 Mission Ave Ste. 234
Oceanside, Ca 92058
(760) 754-8240



VICINITY MAP

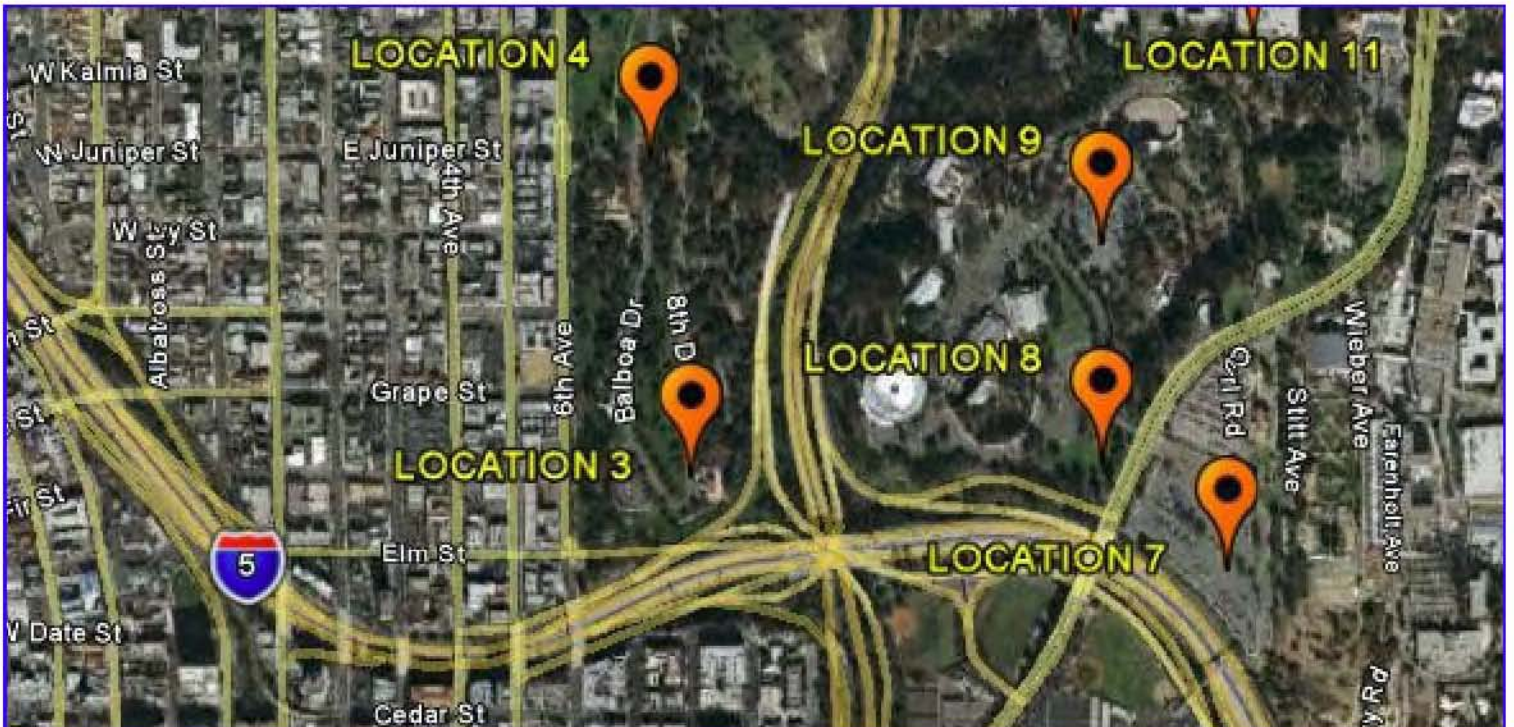


STREETLIGHT TYPICAL

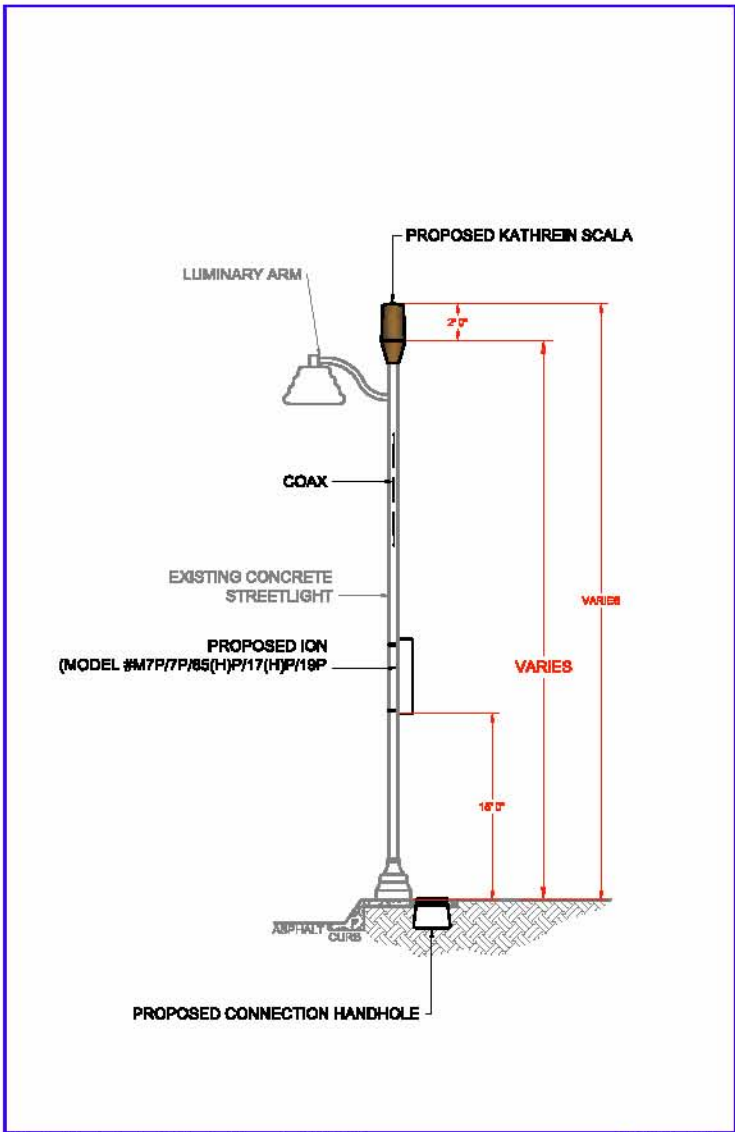
N.T.S.



DIGITAL PHOTO



LOCATION 3

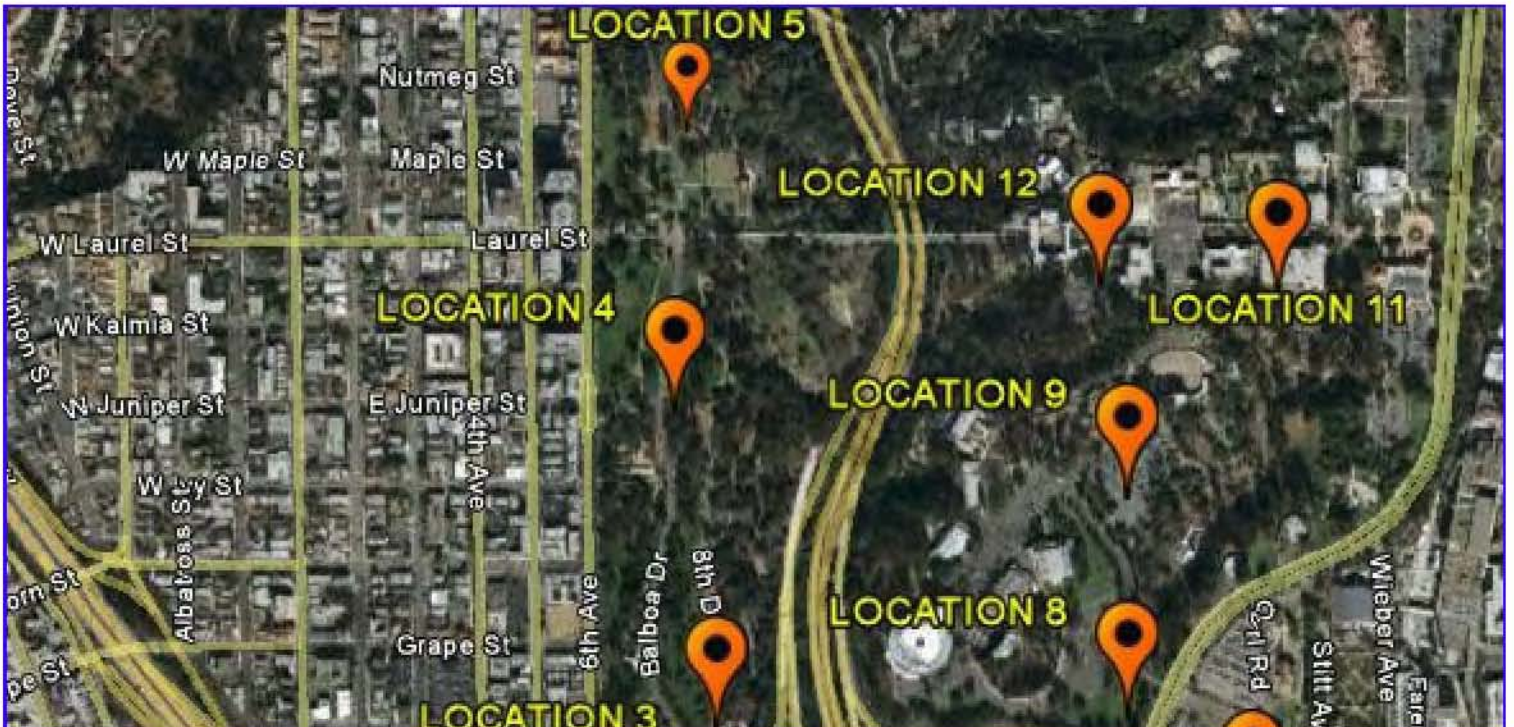


STREETLIGHT TYPICAL

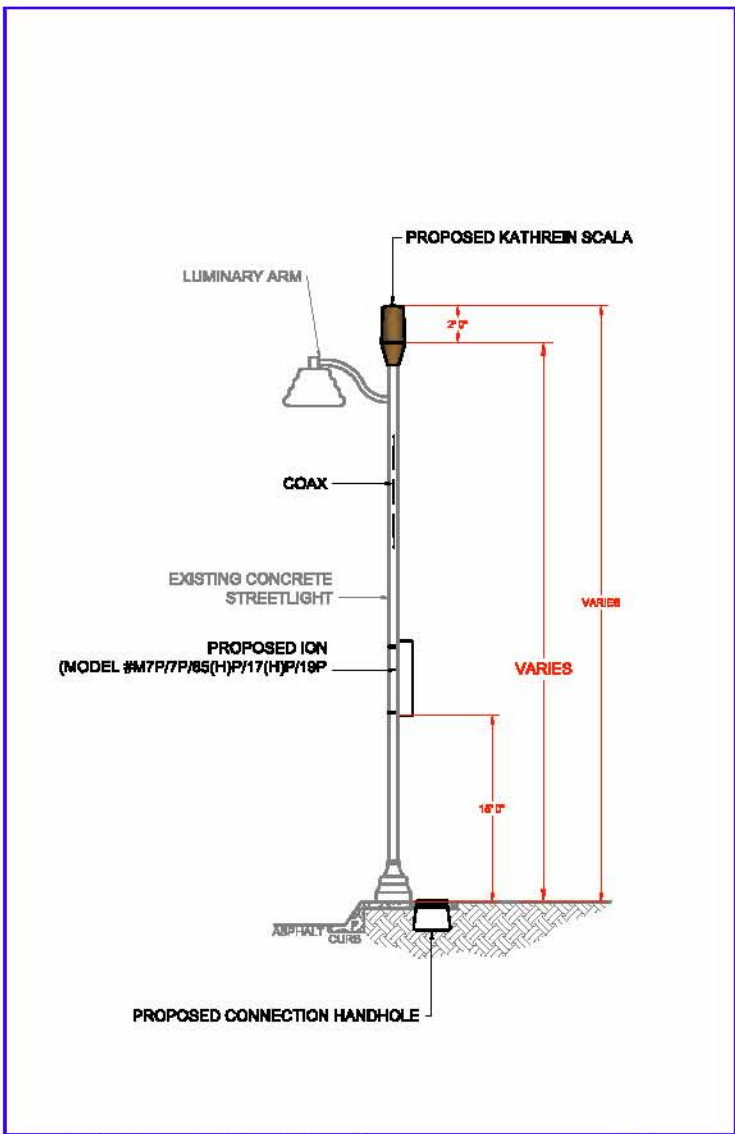
N.T.S.



DIGITAL PHOTO



LOCATION 4

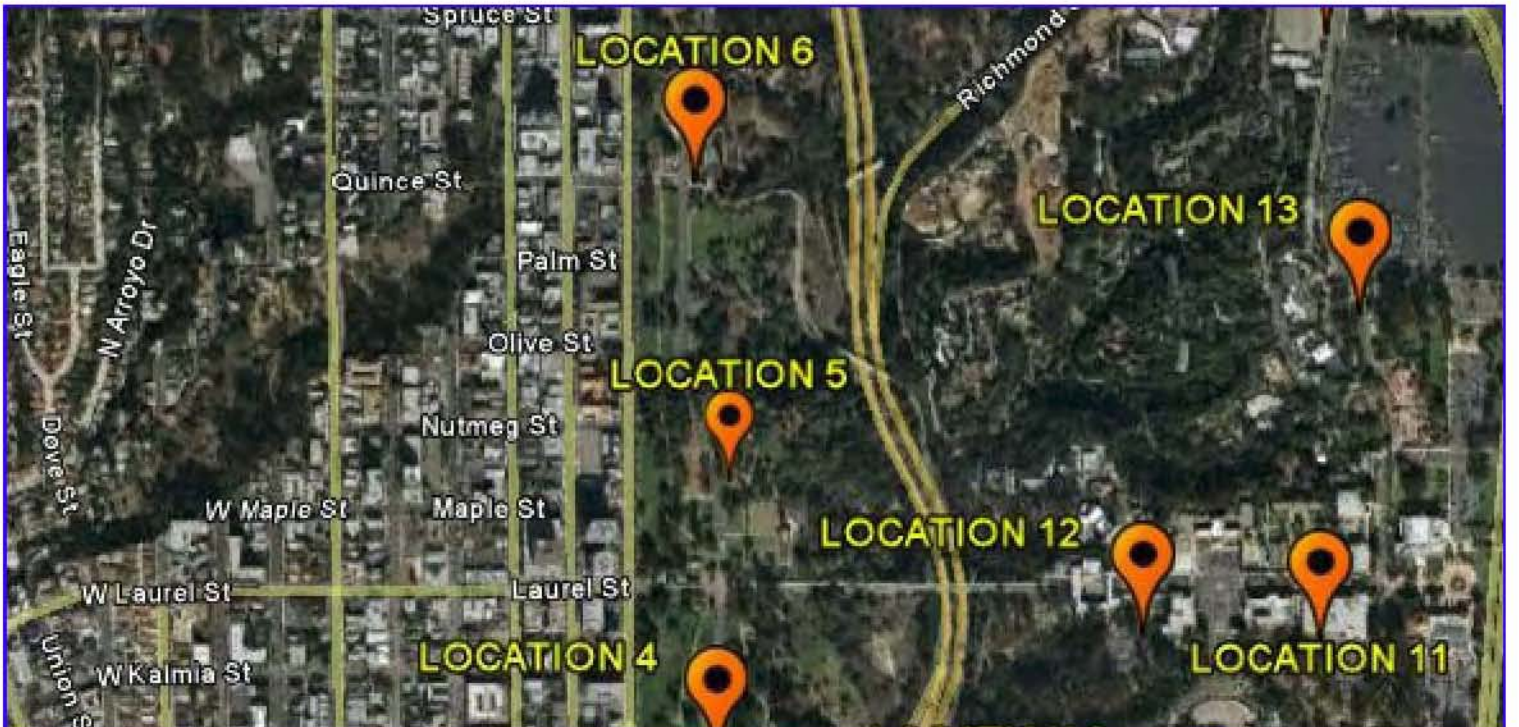


STREETLIGHT TYPICAL

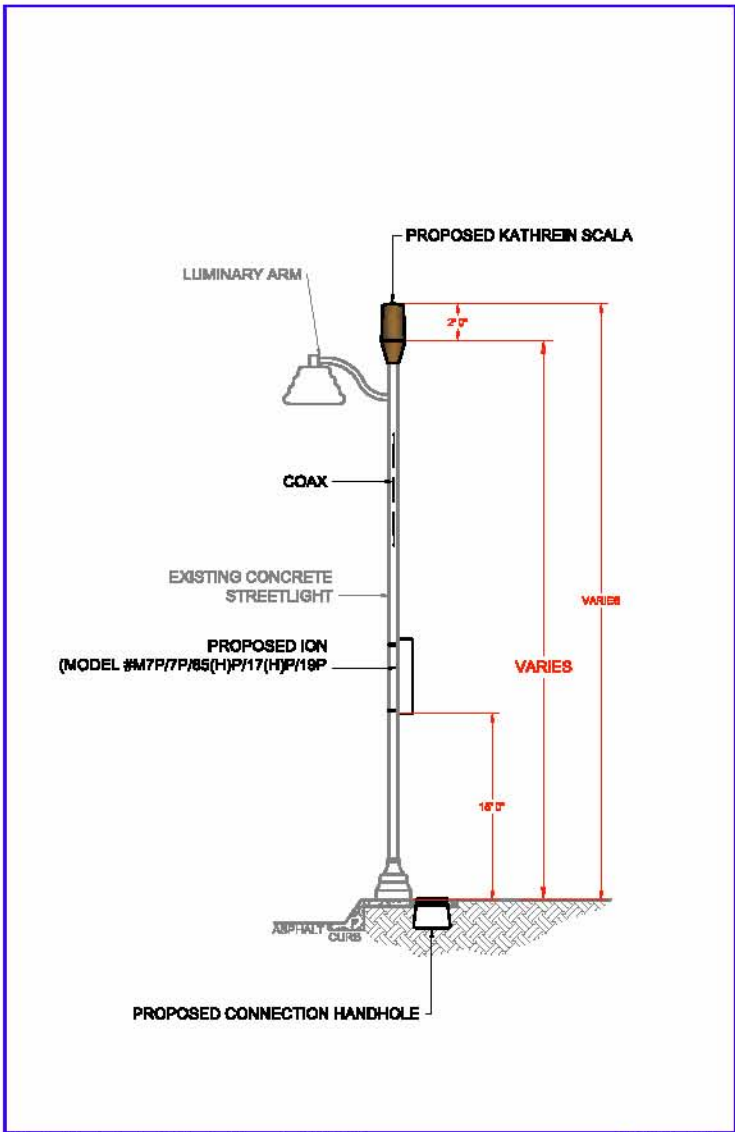
N.T.S.



DIGITAL PHOTO



LOCATION 5

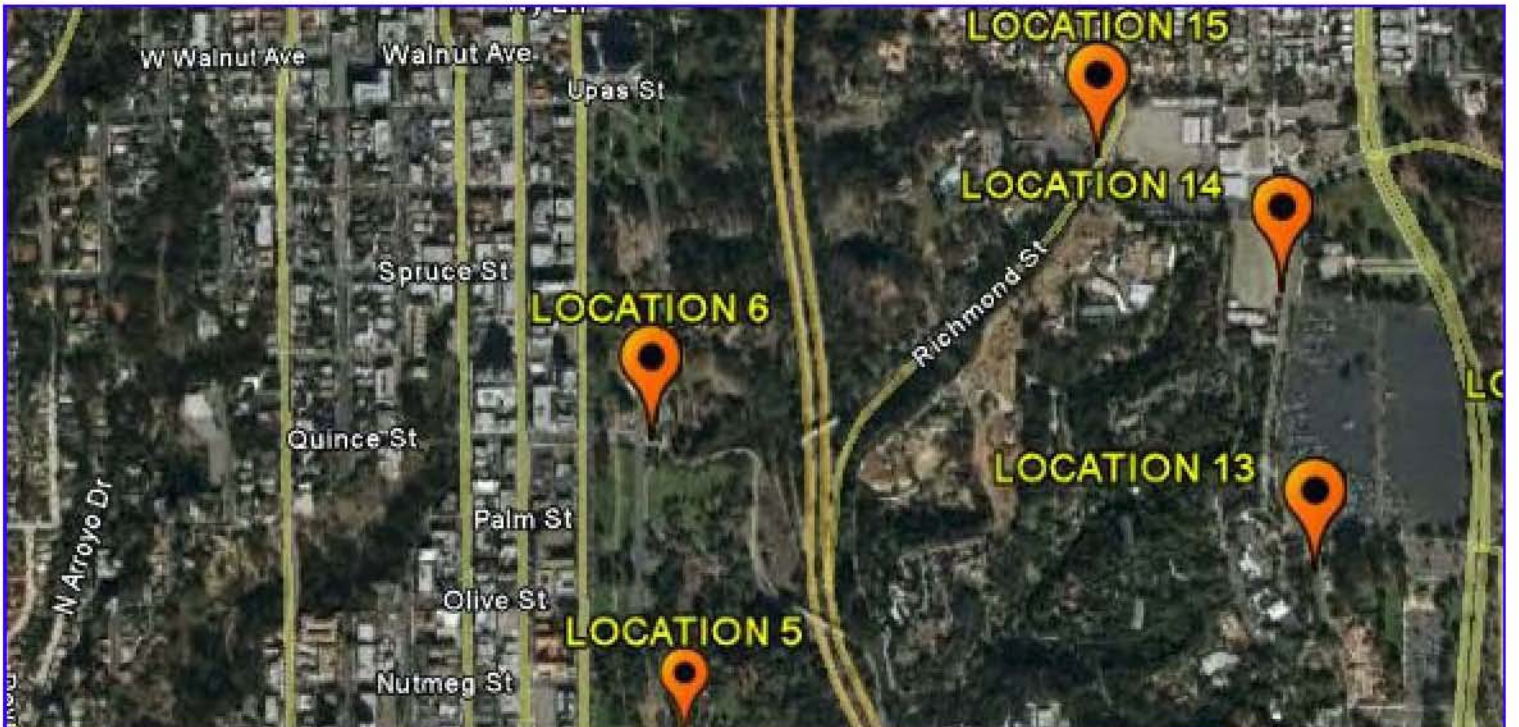


STREETLIGHT TYPICAL

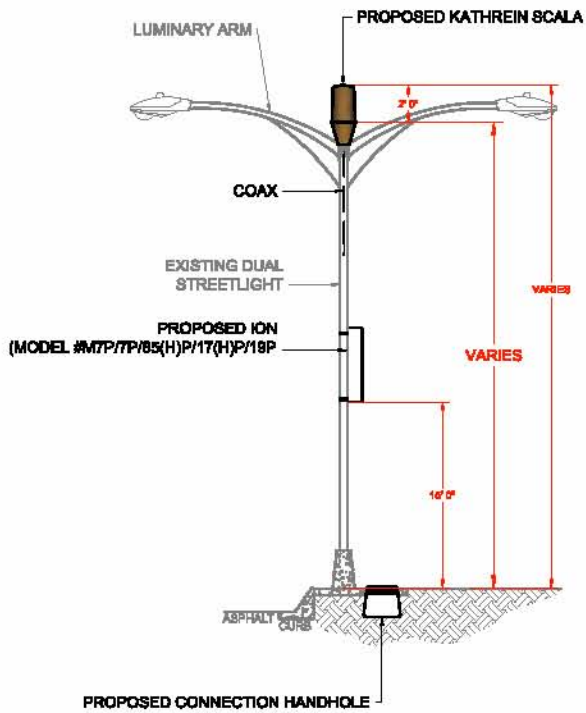
N.T.S.



DIGITAL PHOTO



LOCATION 6



STREETLIGHT TYPICAL

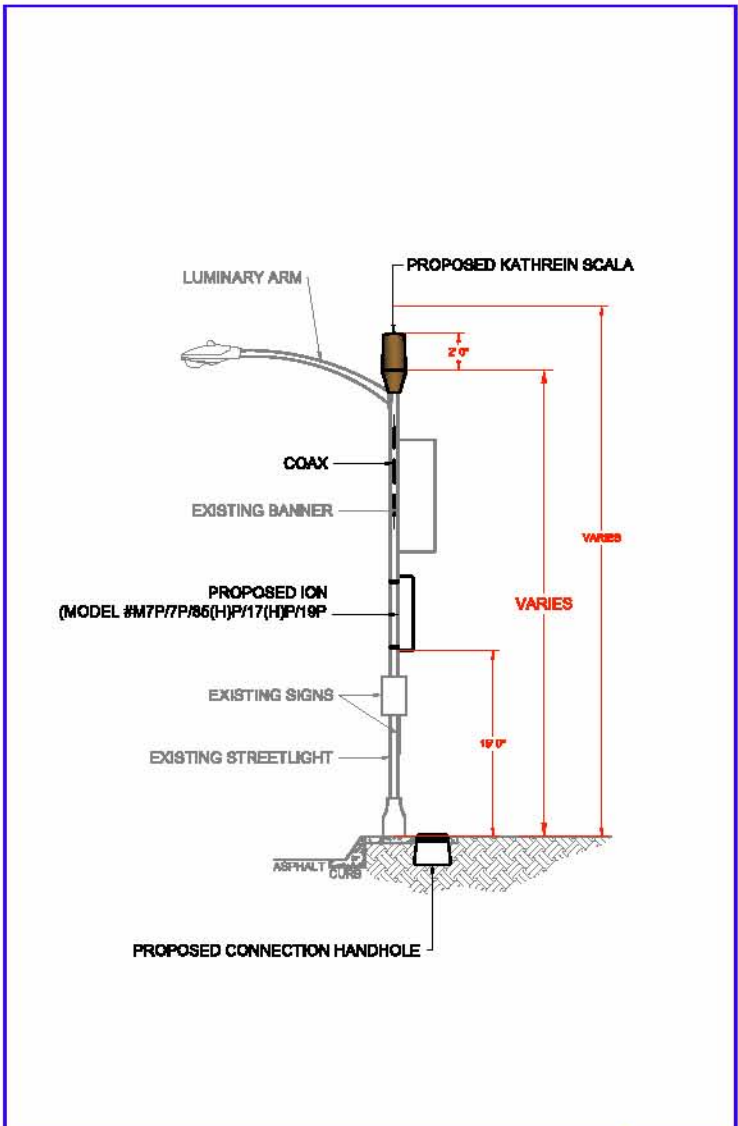
N.T.S.



DIGITAL PHOTO



LOCATION 7



STREETLIGHT TYPICAL

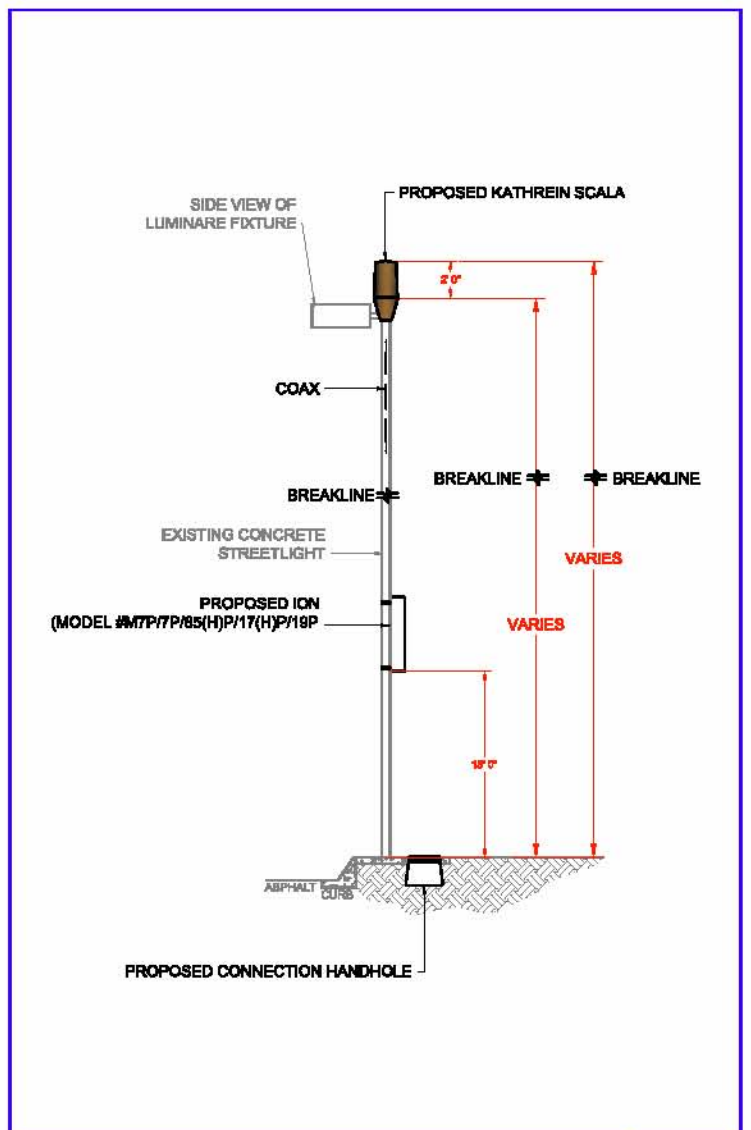
N.T.S.



DIGITAL PHOTO



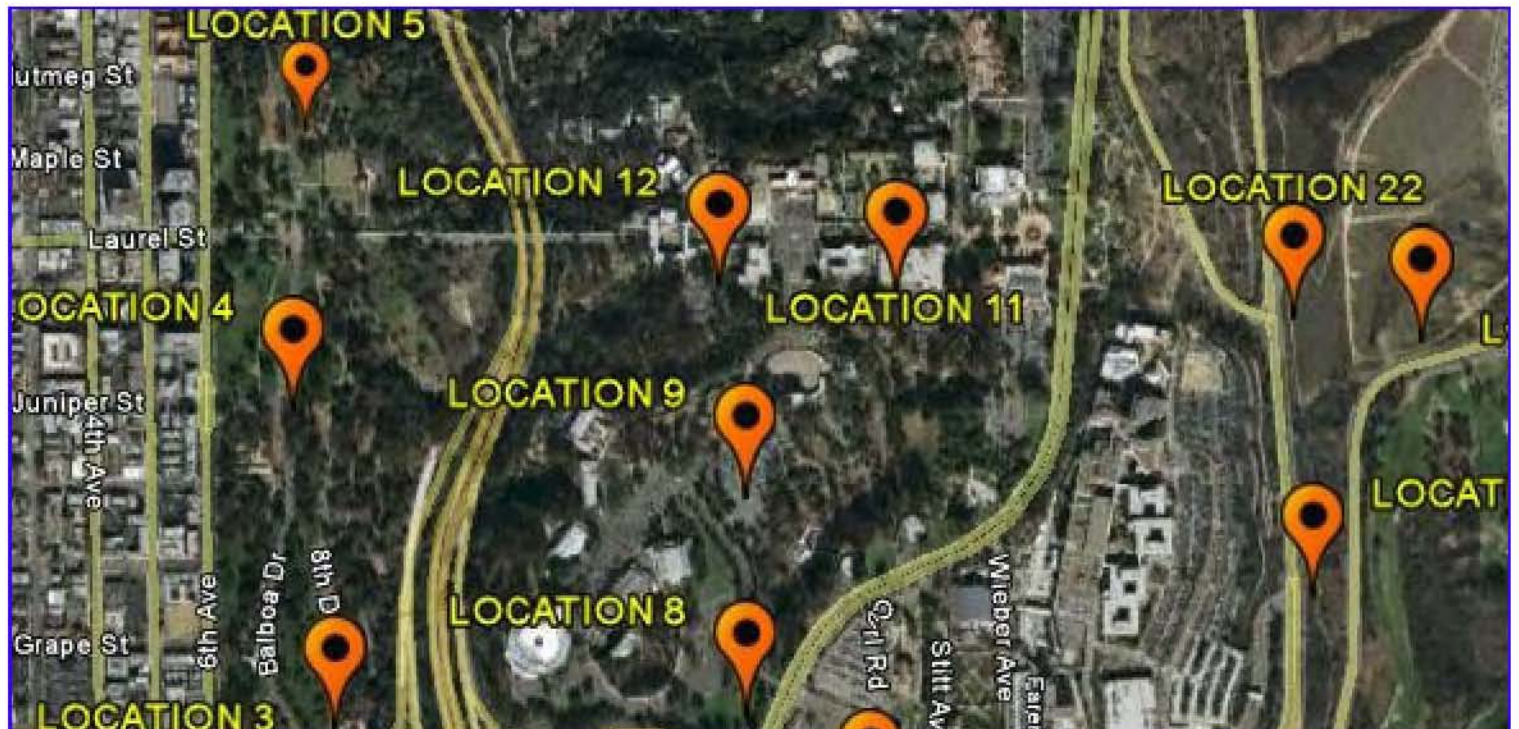
LOCATION 8

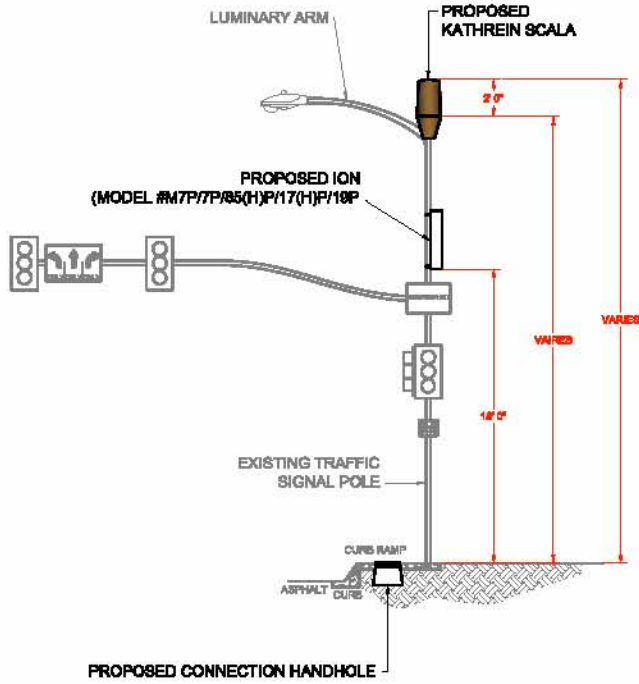


STREETLIGHT TYPICAL **N.T.S.**



DIGITAL PHOTO





STREETLIGHT TYPICAL

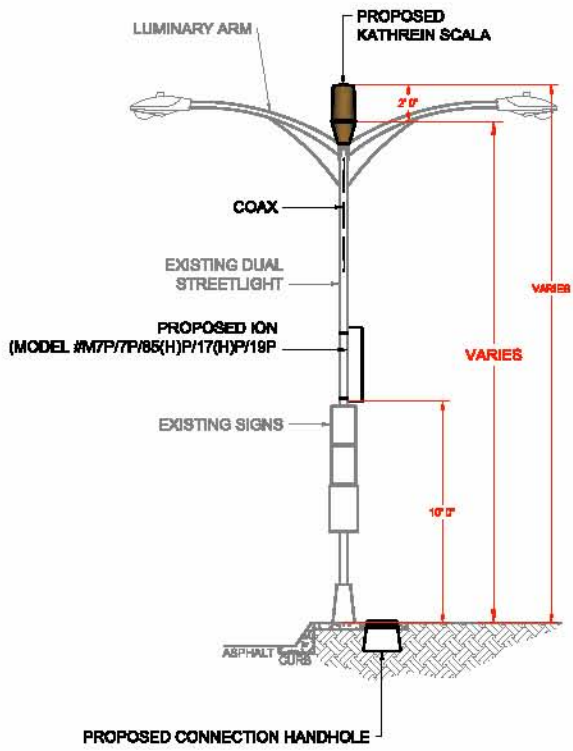
N.T.S.



DIGITAL PHOTO



LOCATION 10

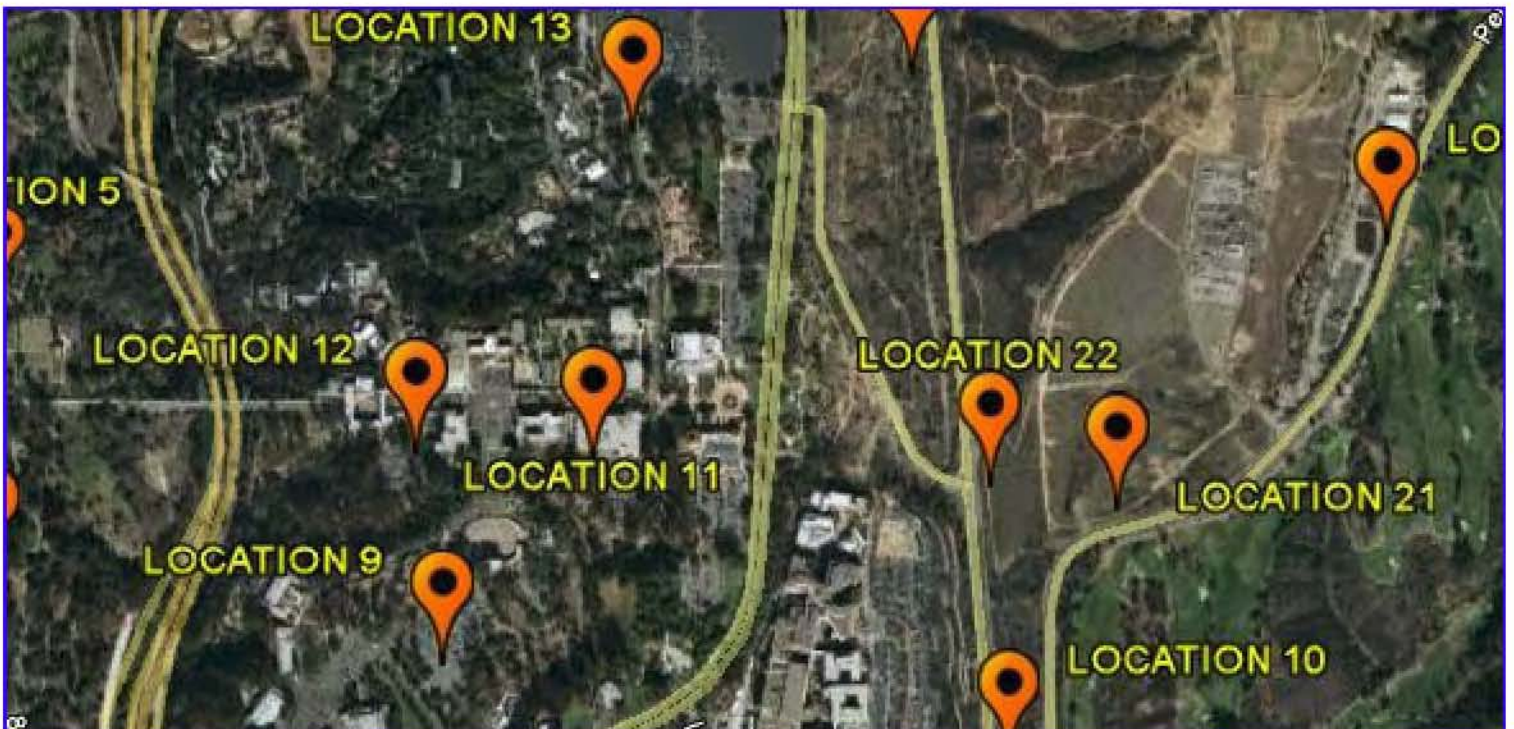


STREETLIGHT TYPICAL

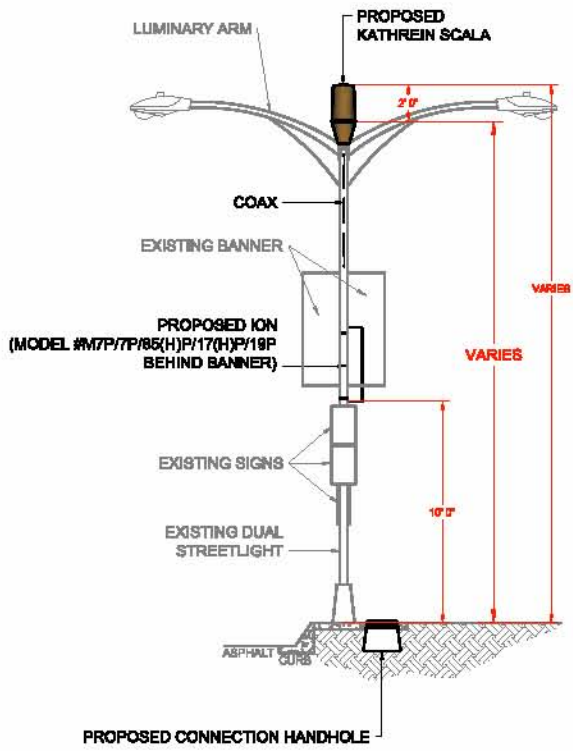
N.T.S.



DIGITAL PHOTO



LOCATION 11

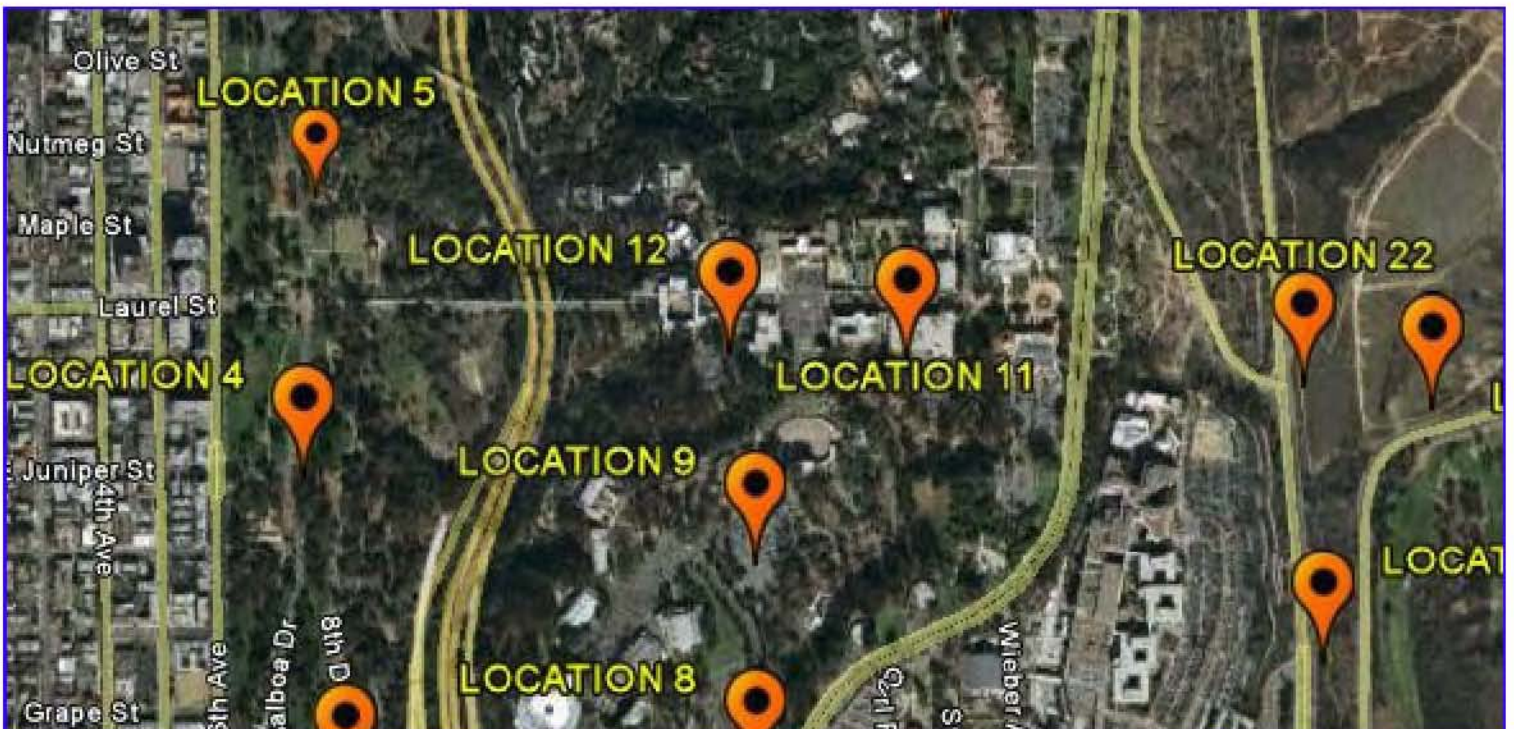


STREETLIGHT TYPICAL

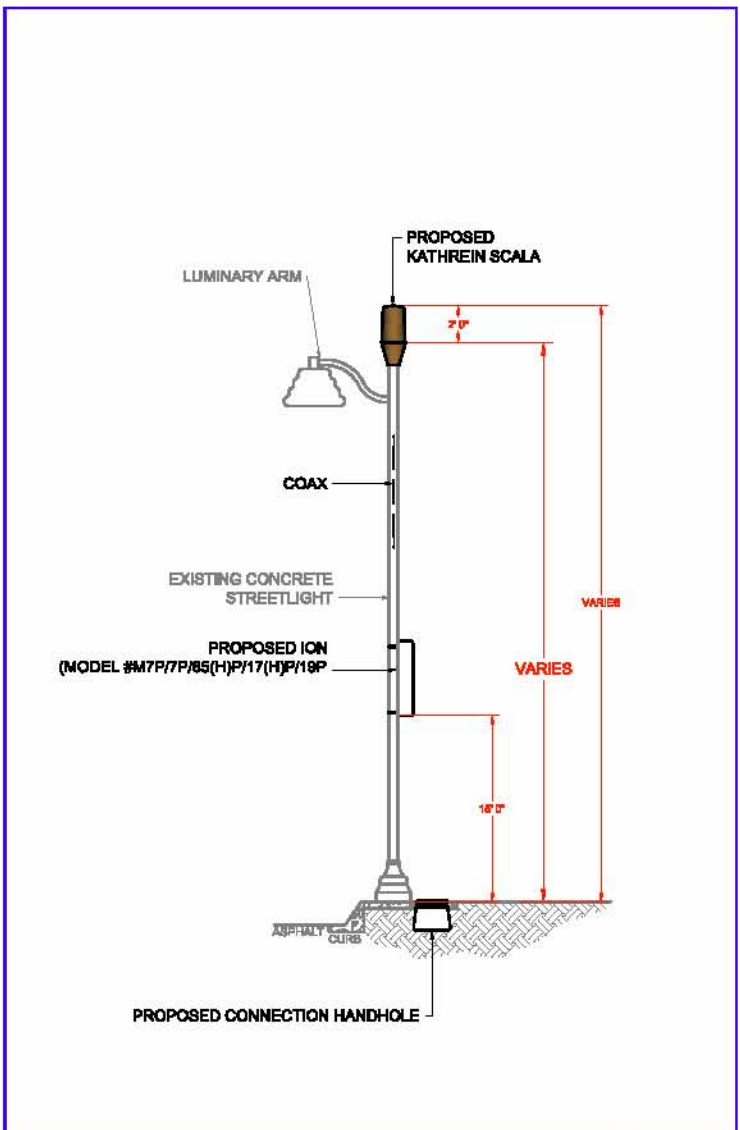
N.T.S.



DIGITAL PHOTO



LOCATION 12



STREETLIGHT TYPICAL

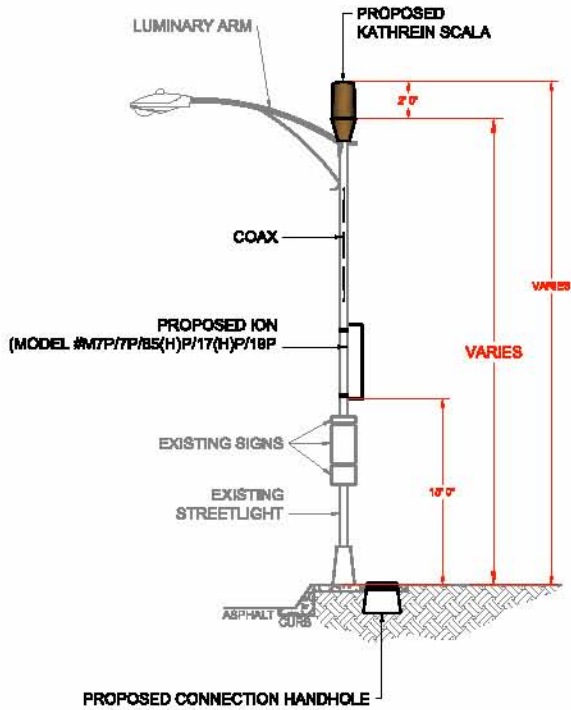
N.T.S.



DIGITAL PHOTO



LOCATION 13

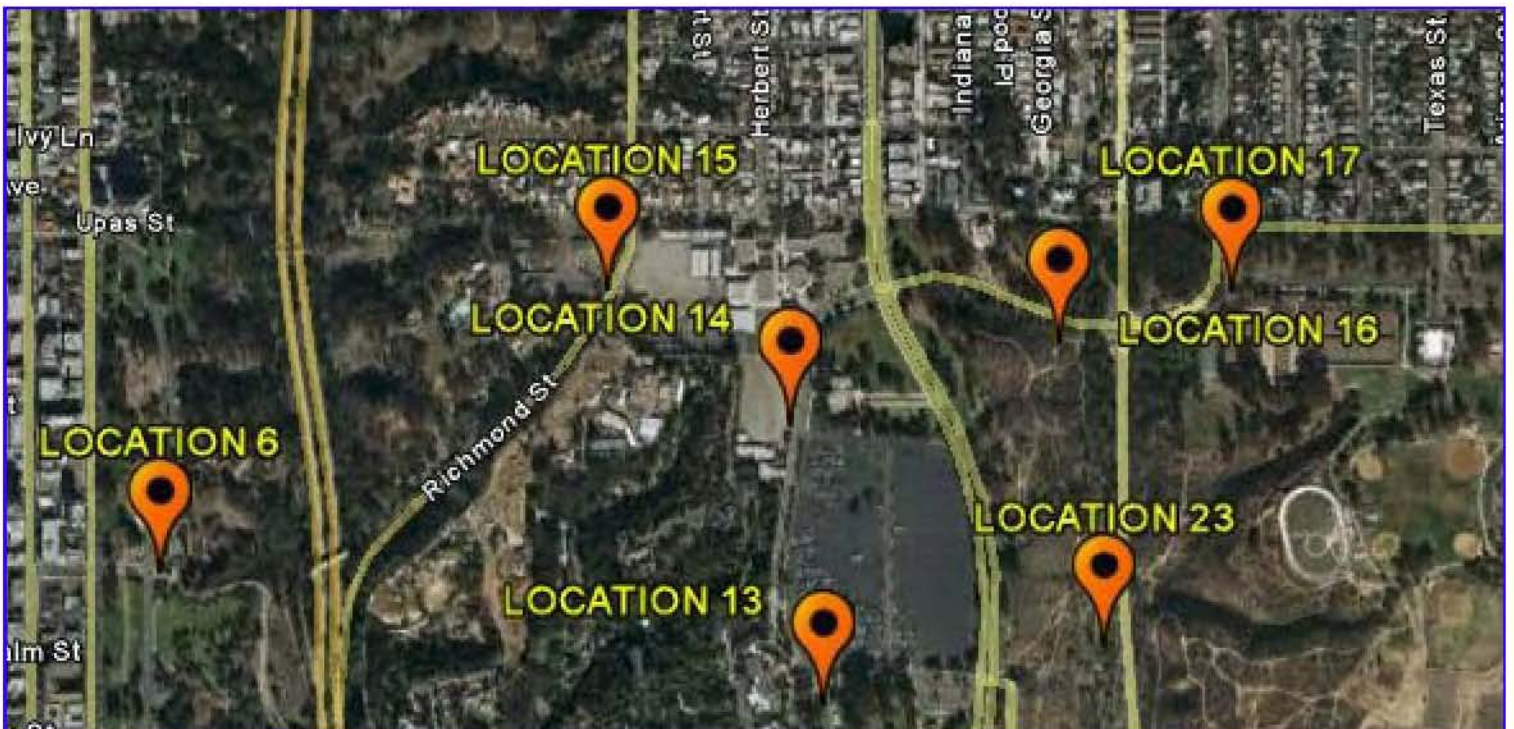


STREETLIGHT TYPICAL

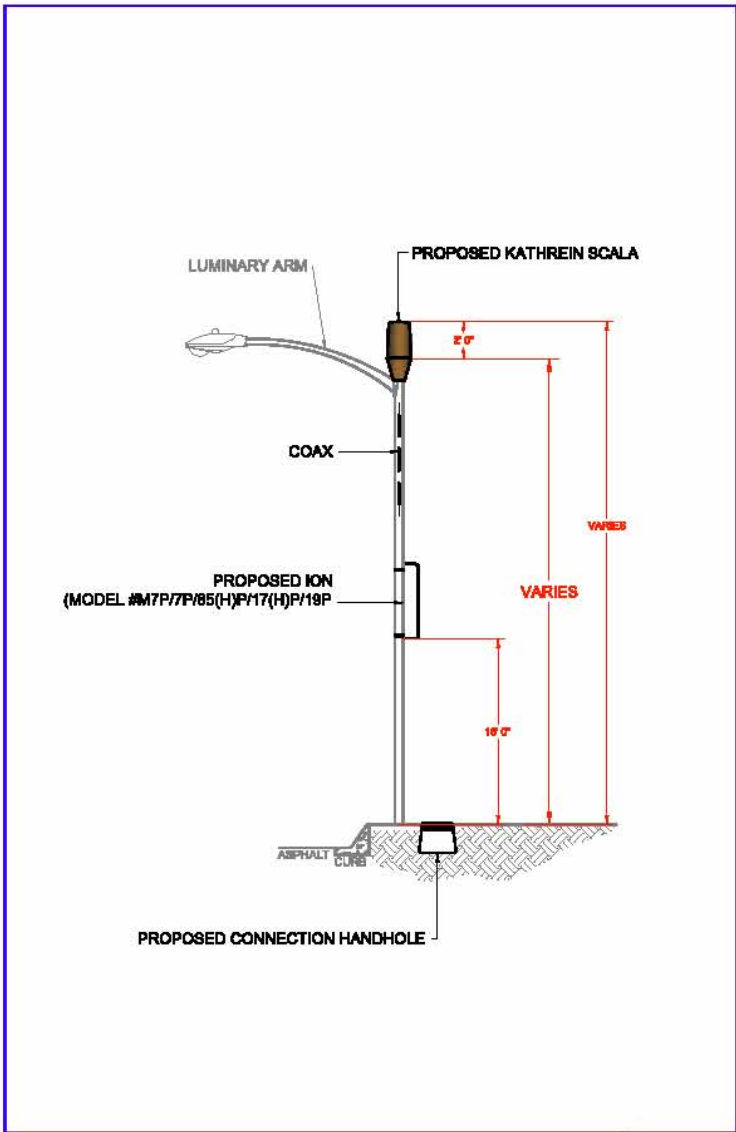
N.T.S.



DIGITAL PHOTO

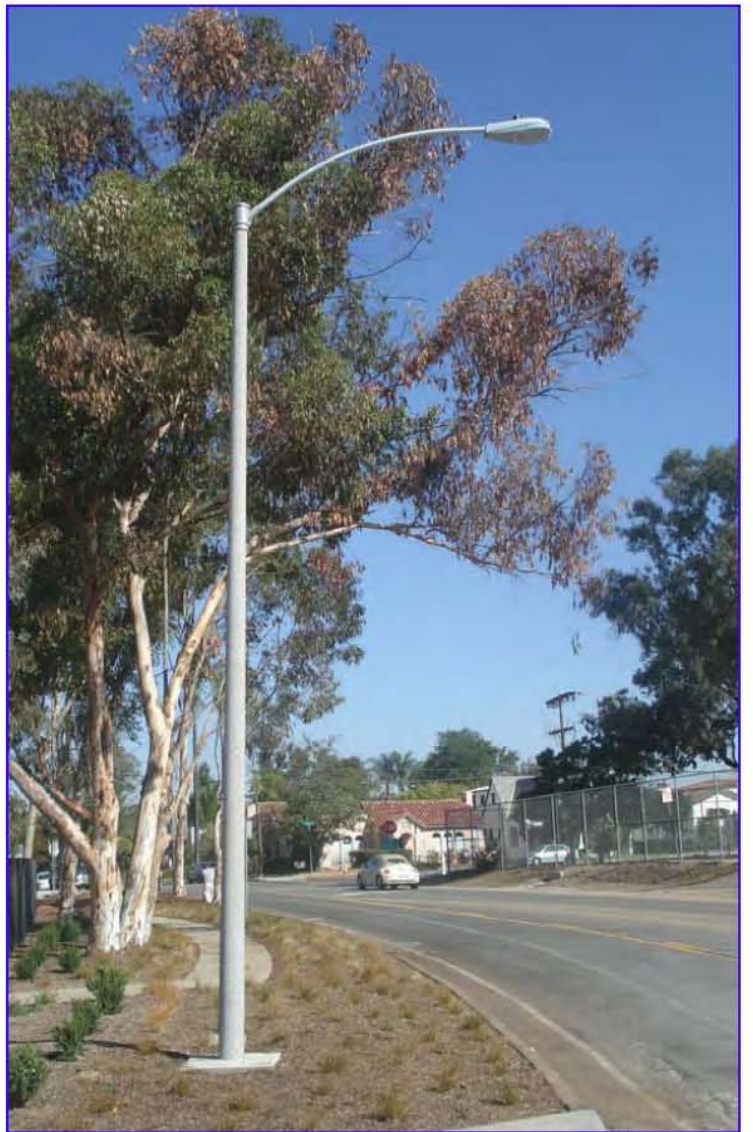


LOCATION 14



STREETLIGHT TYPICAL

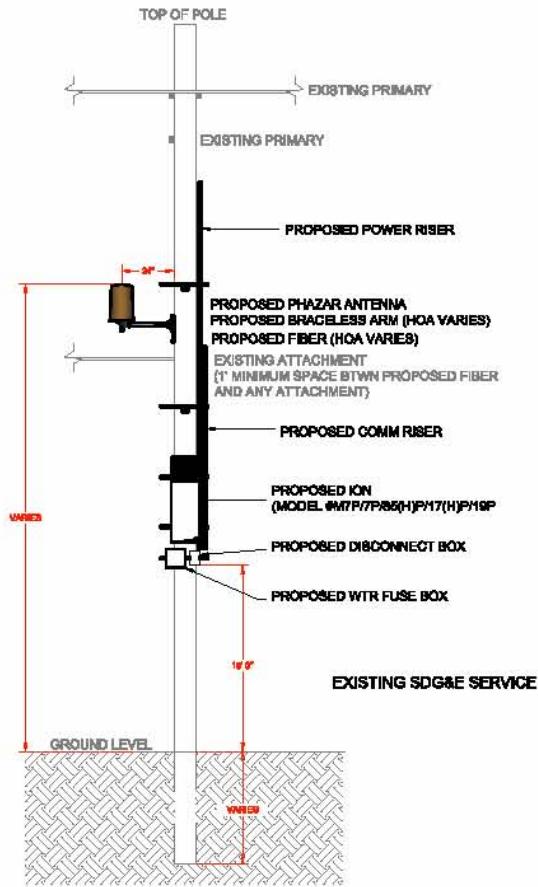
N.T.S.



DIGITAL PHOTO



LOCATION 15

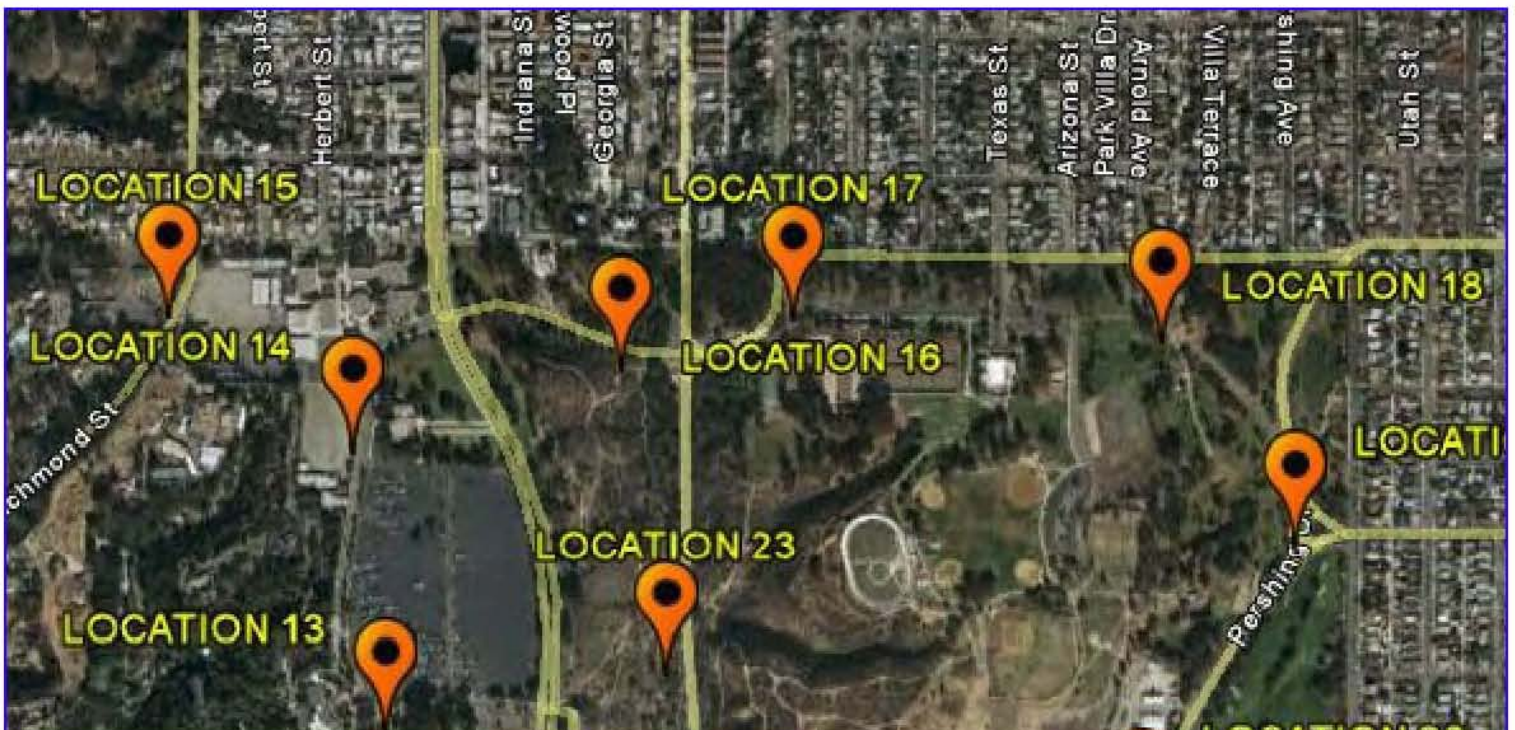


STREETLIGHT TYPICAL

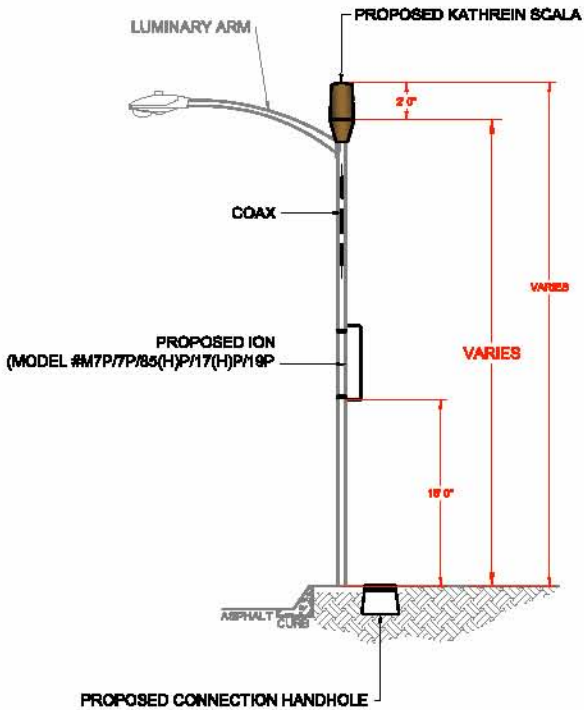
N.T.S.



DIGITAL PHOTO



LOCATION 16

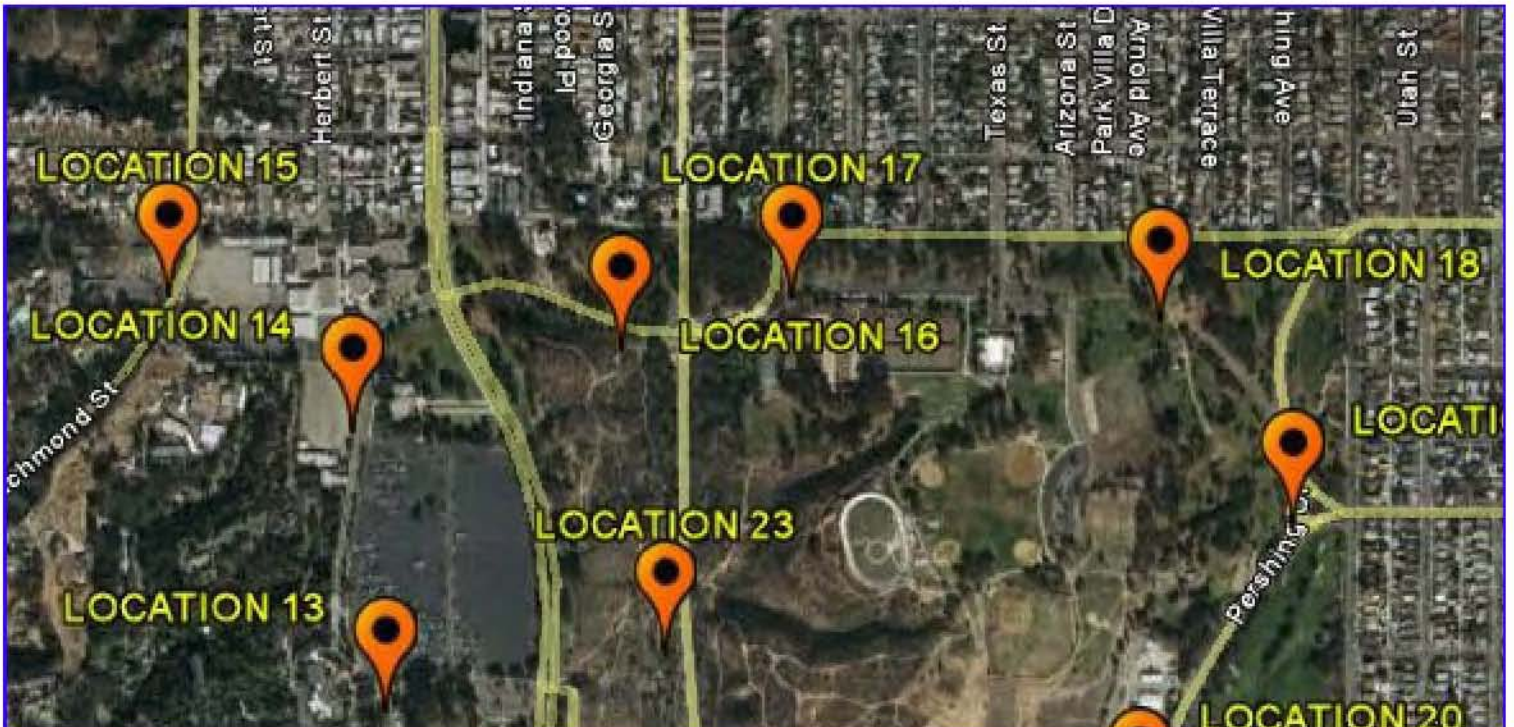


STREETLIGHT TYPICAL

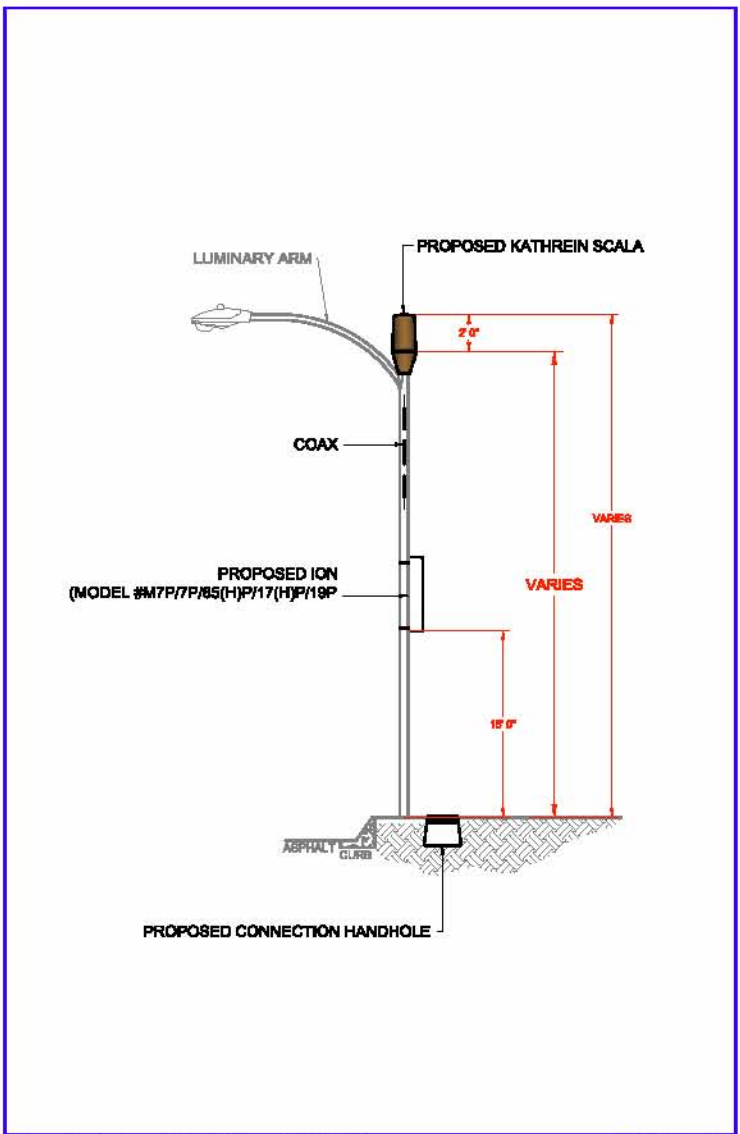
N.T.S.



DIGITAL PHOTO



LOCATION 17

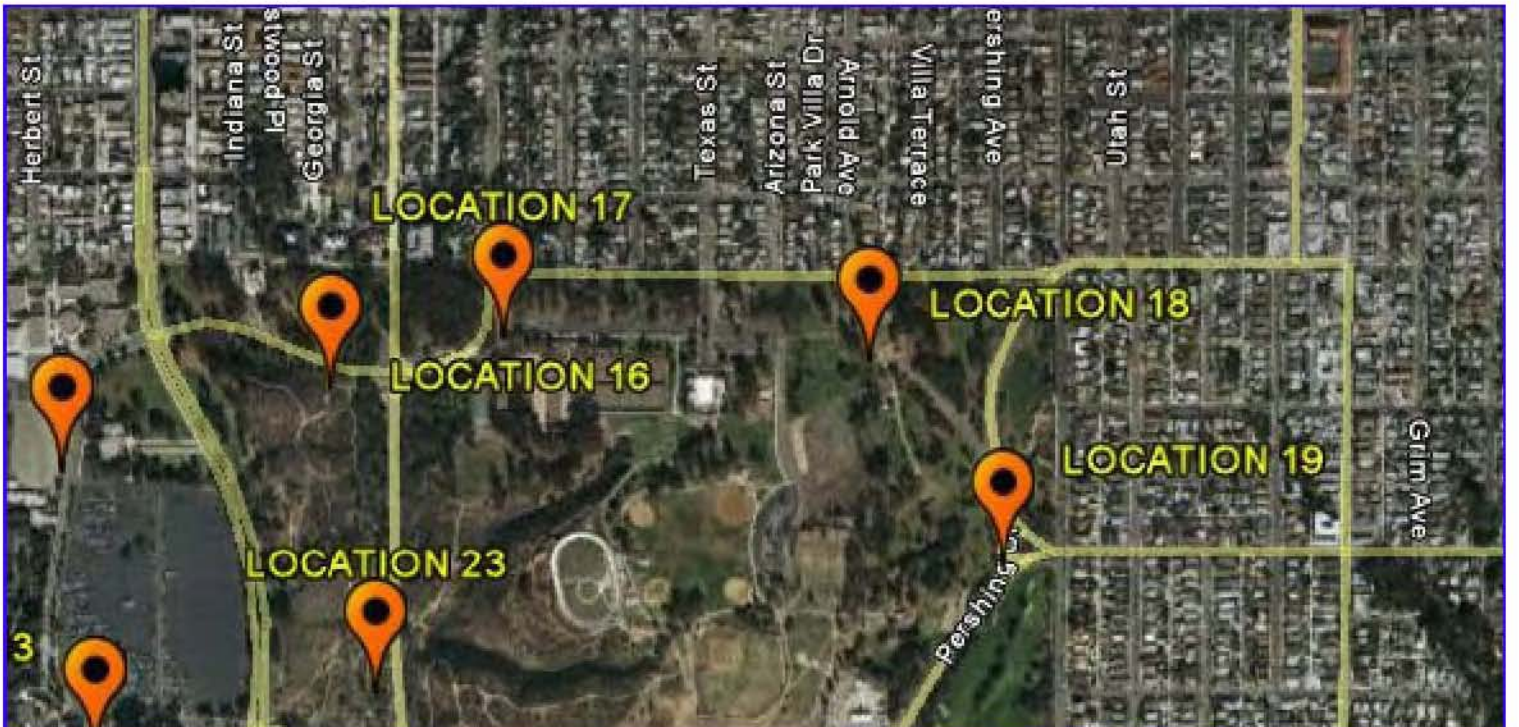


STREETLIGHT TYPICAL

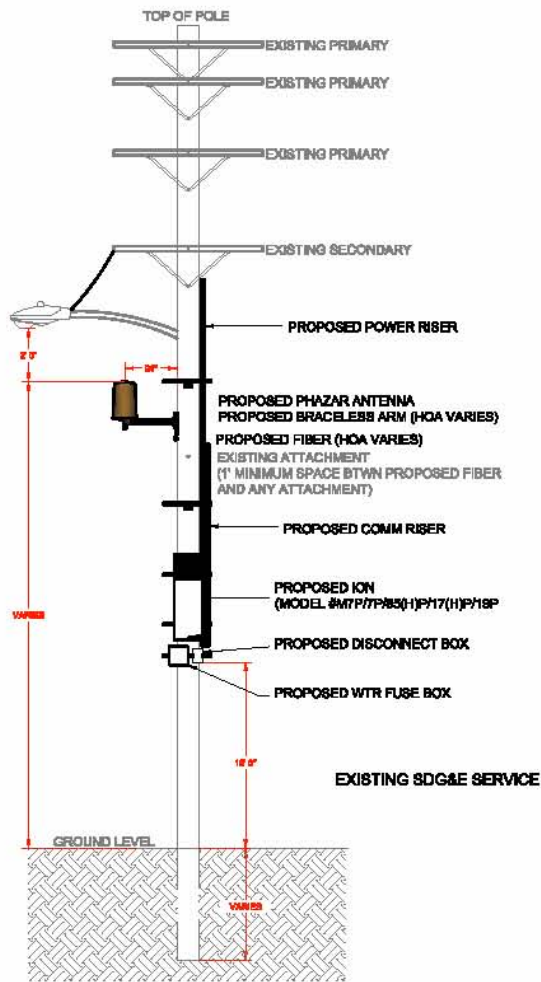
N.T.S.



DIGITAL PHOTO



LOCATION 18

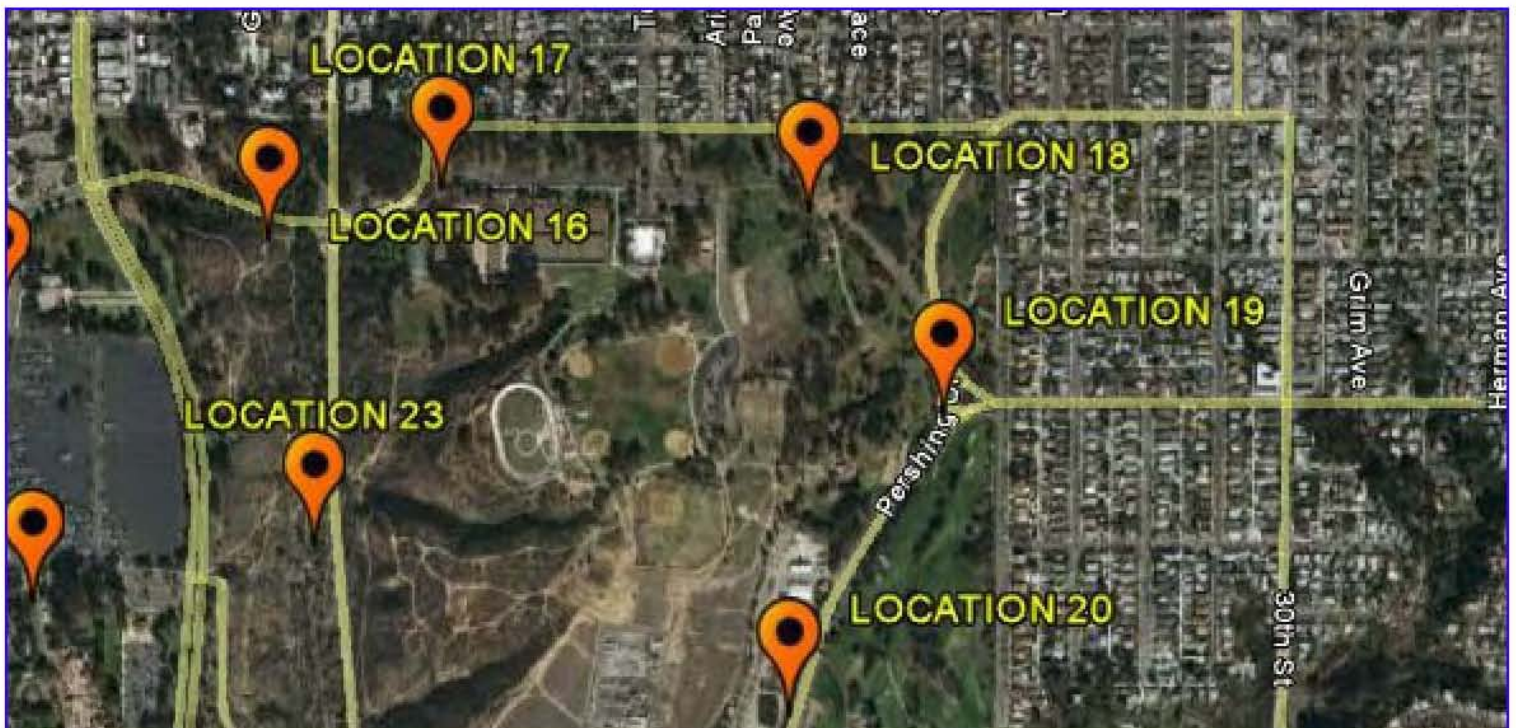


STREETLIGHT TYPICAL

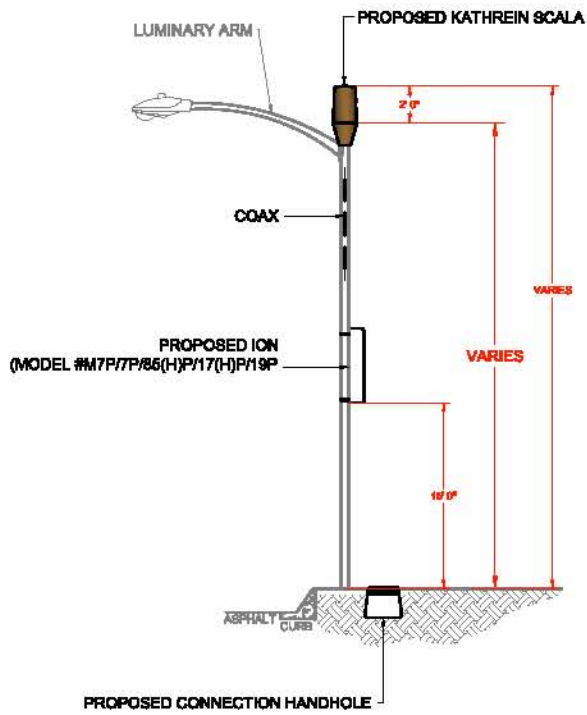
N.T.S.



DIGITAL PHOTO



LOCATION 19

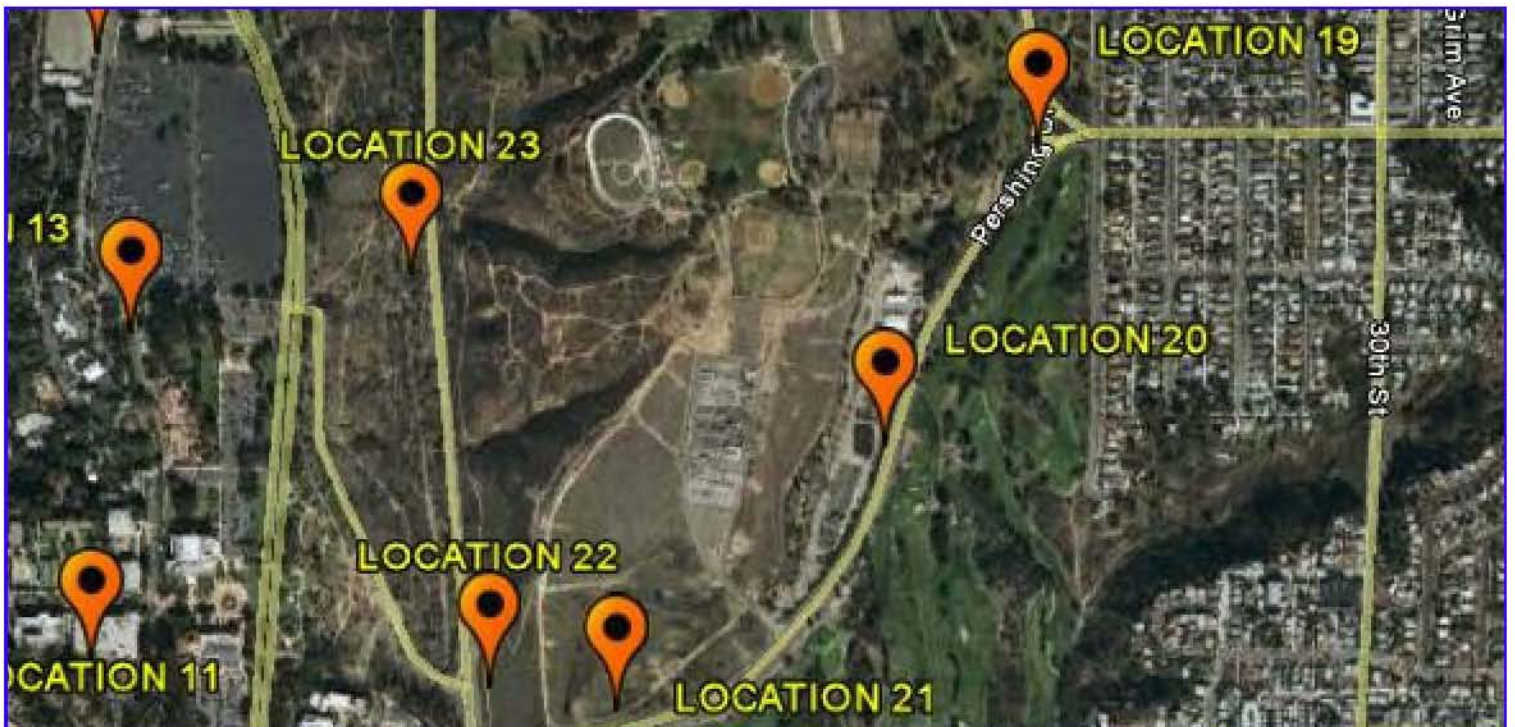


STREETLIGHT TYPICAL

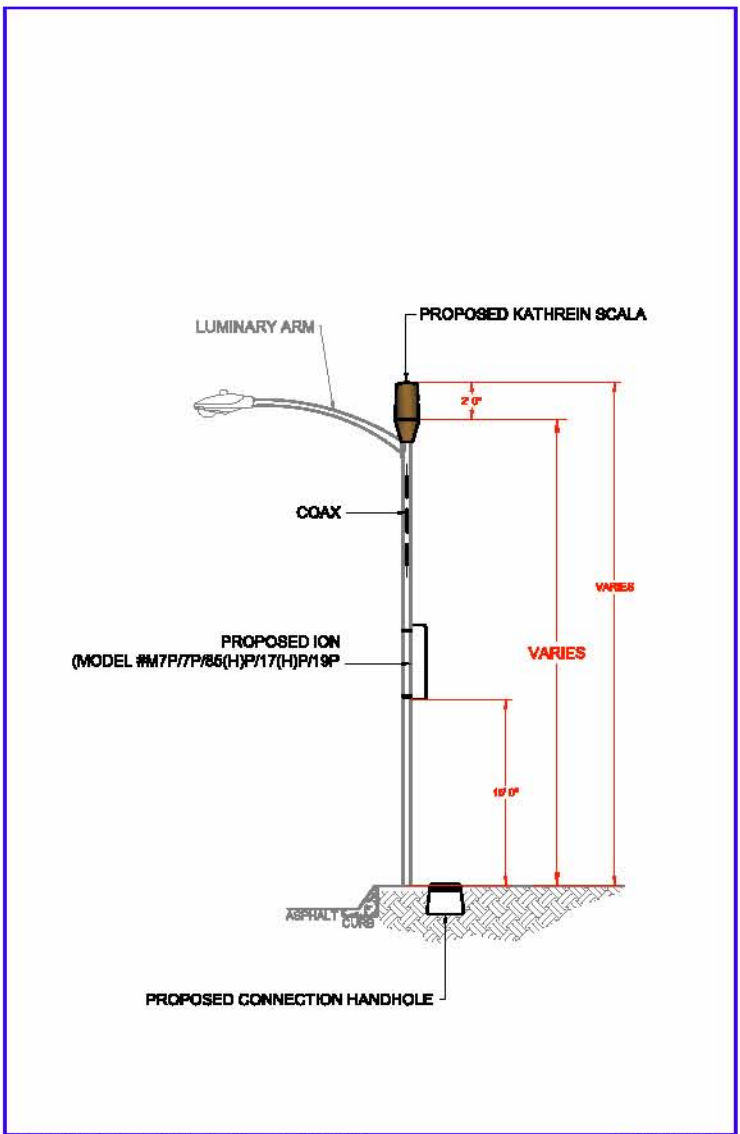
N.T.S.



DIGITAL PHOTO



LOCATION 20

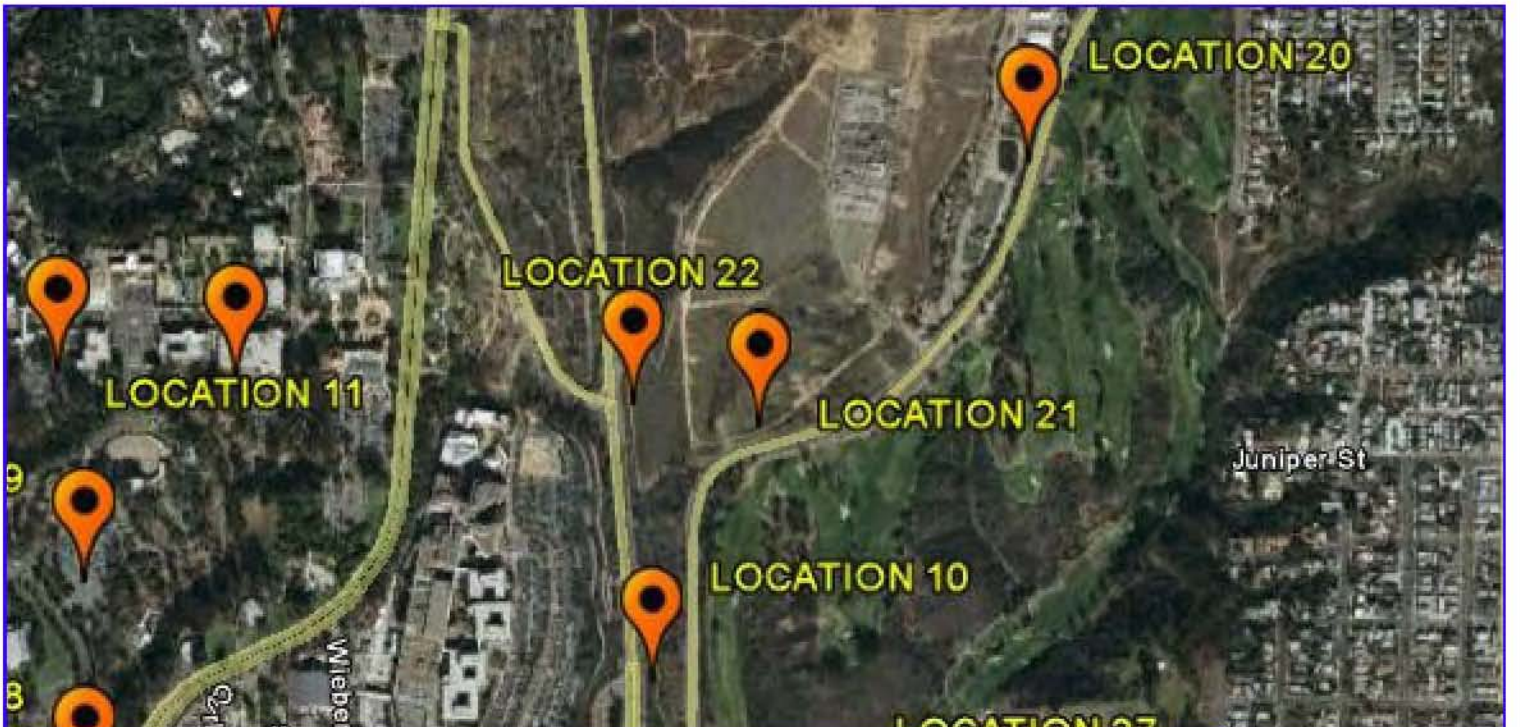


STREETLIGHT TYPICAL

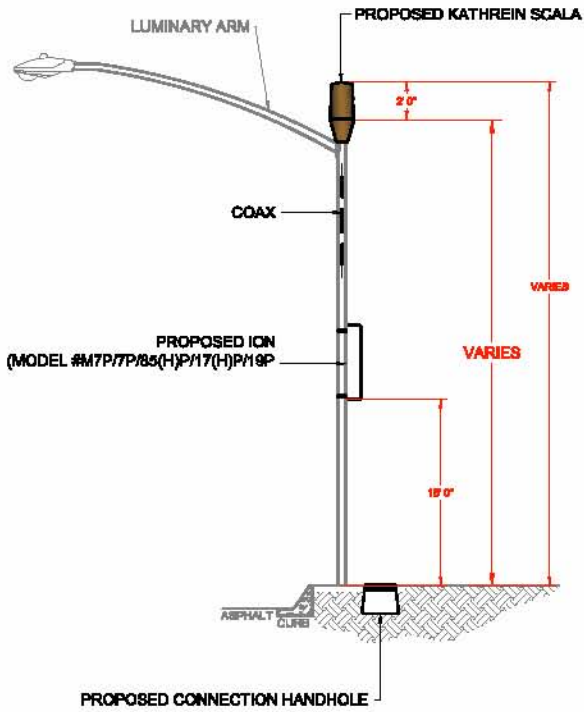
N.T.S.



DIGITAL PHOTO



LOCATION 21

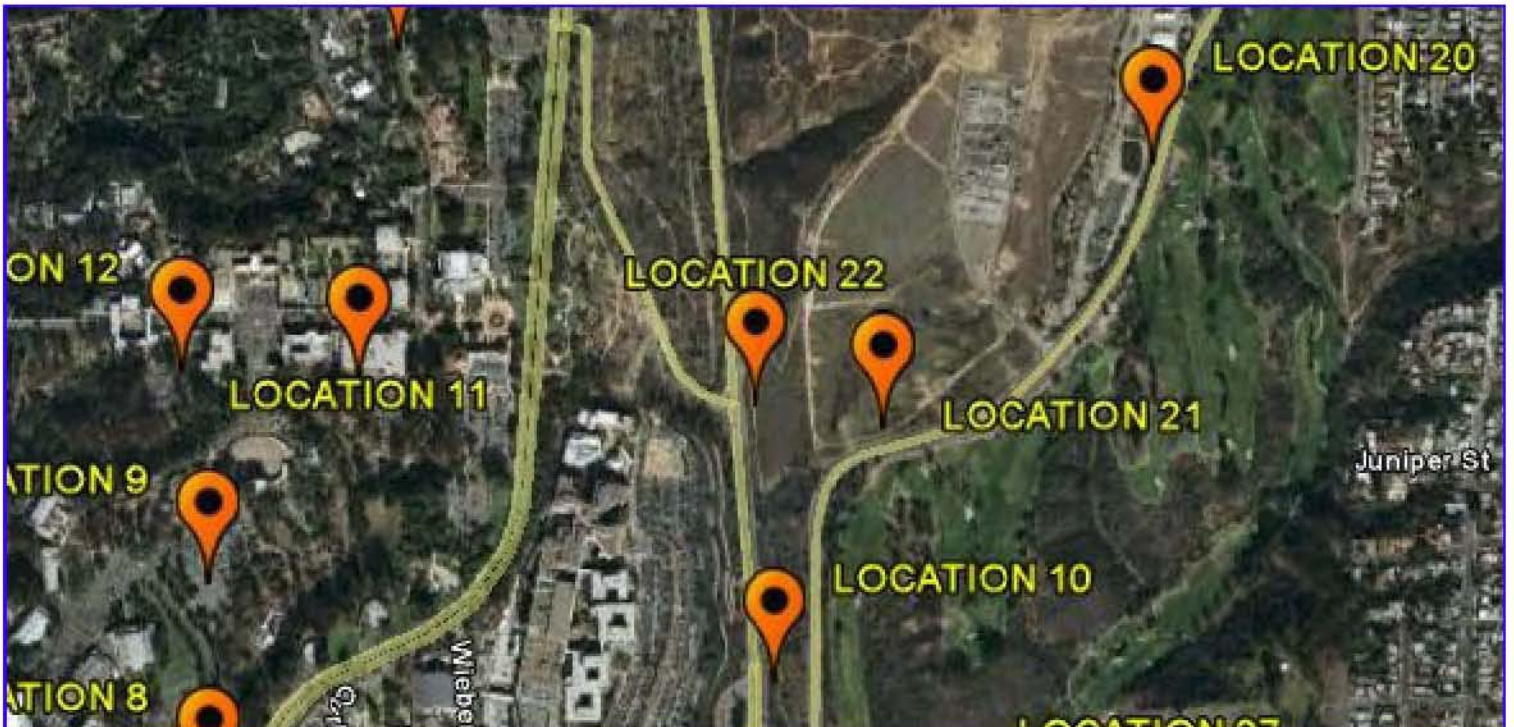


STREETLIGHT TYPICAL

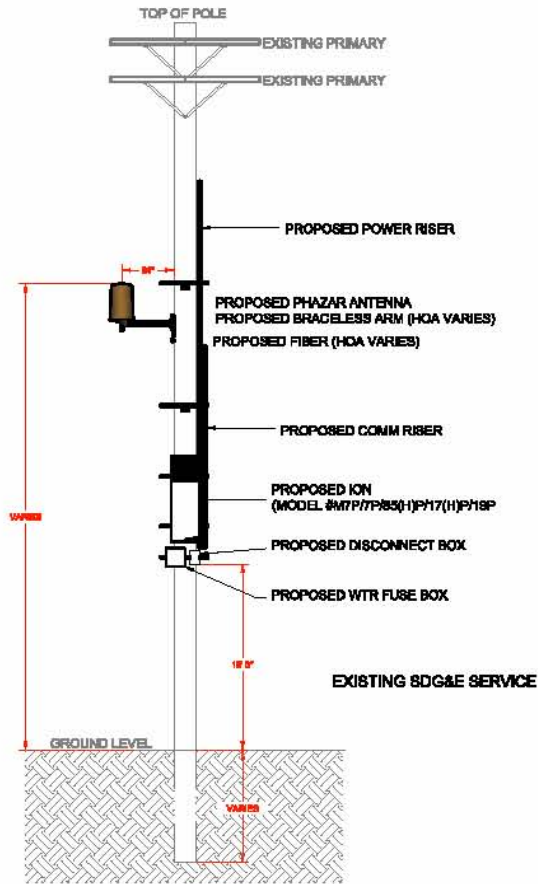
N.T.S.



DIGITAL PHOTO



LOCATION 22

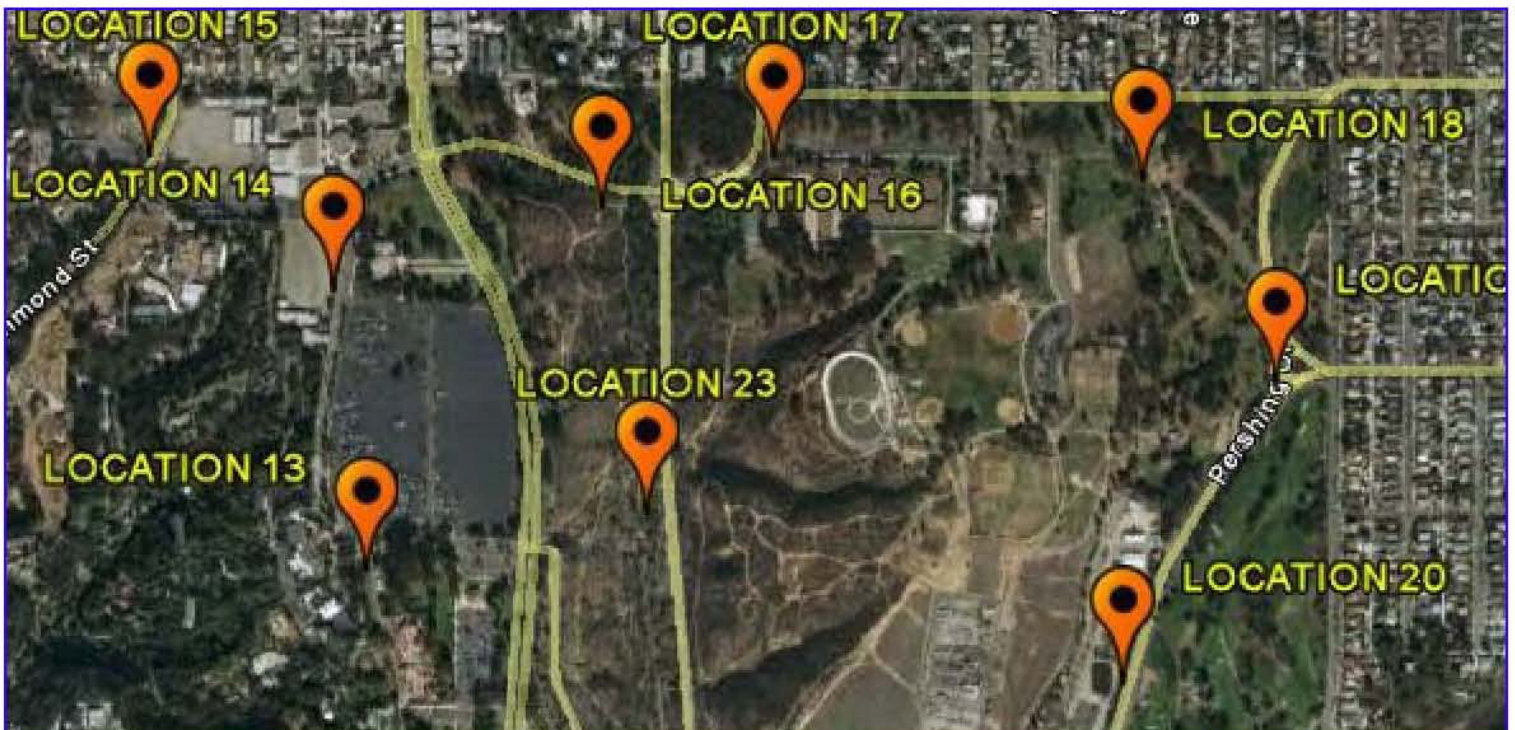


STREETLIGHT TYPICAL

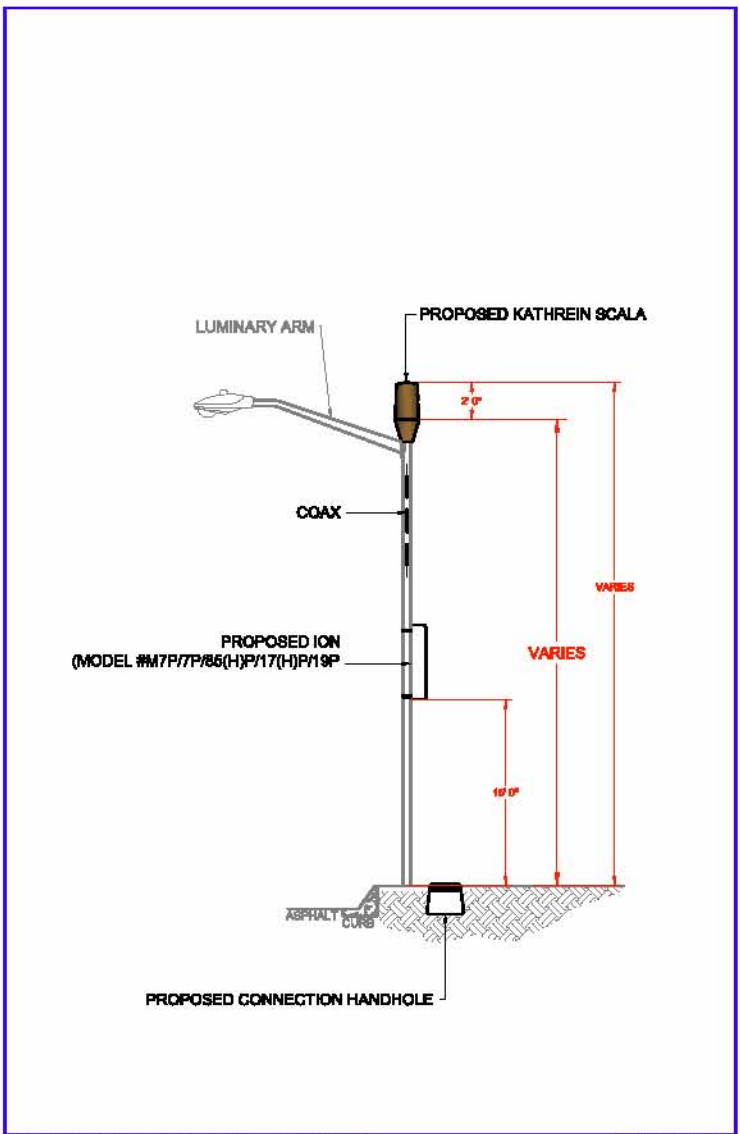
N.T.S.



DIGITAL PHOTO



LOCATION 23



STREETLIGHT TYPICAL

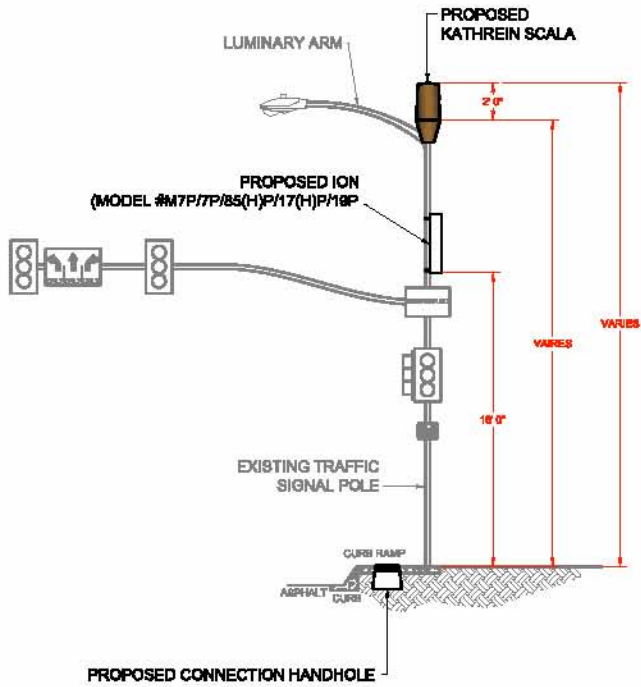
N.T.S.



DIGITAL PHOTO

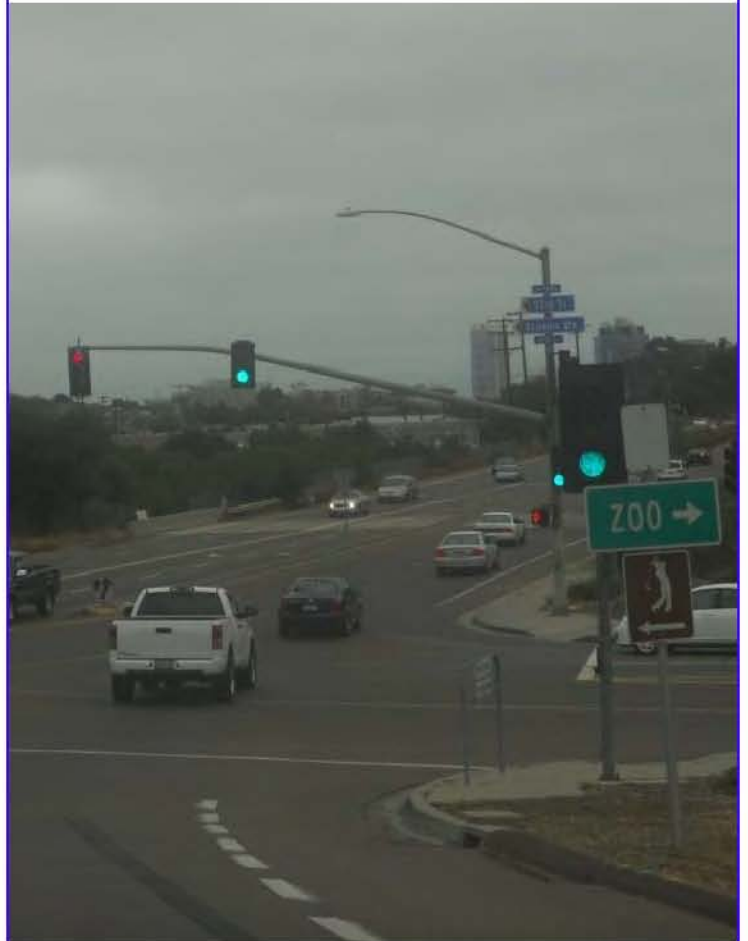


LOCATION 24



STREETLIGHT TYPICAL

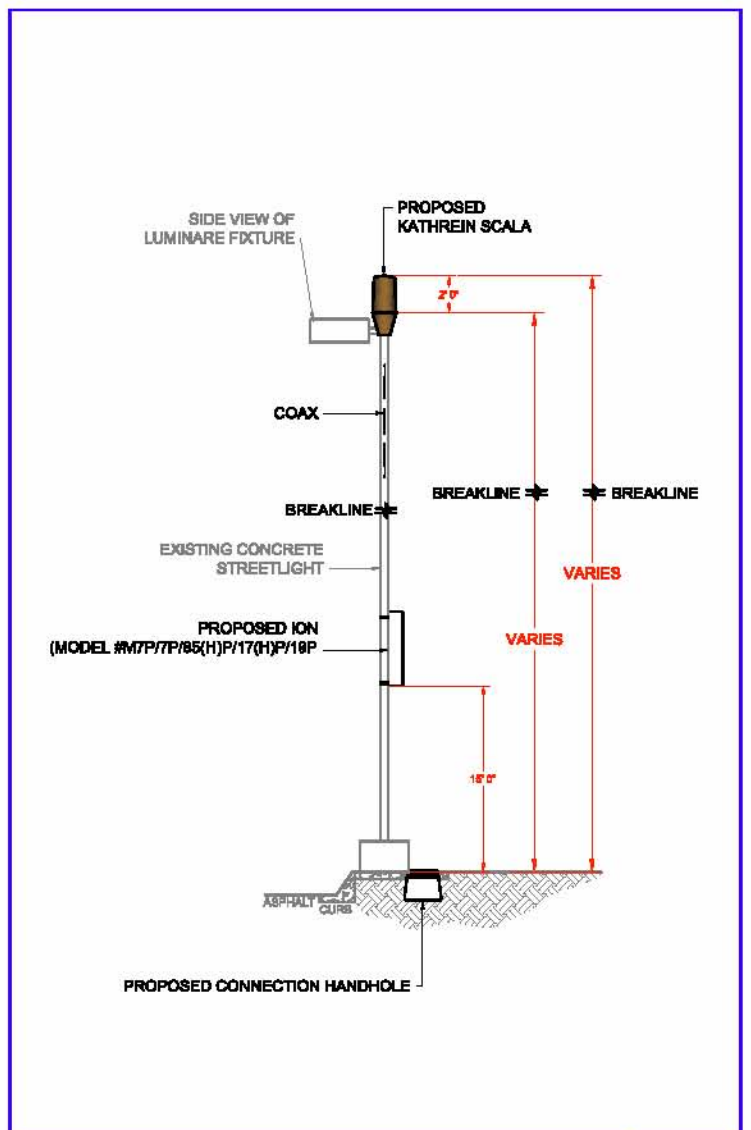
N.T.S.



DIGITAL PHOTO



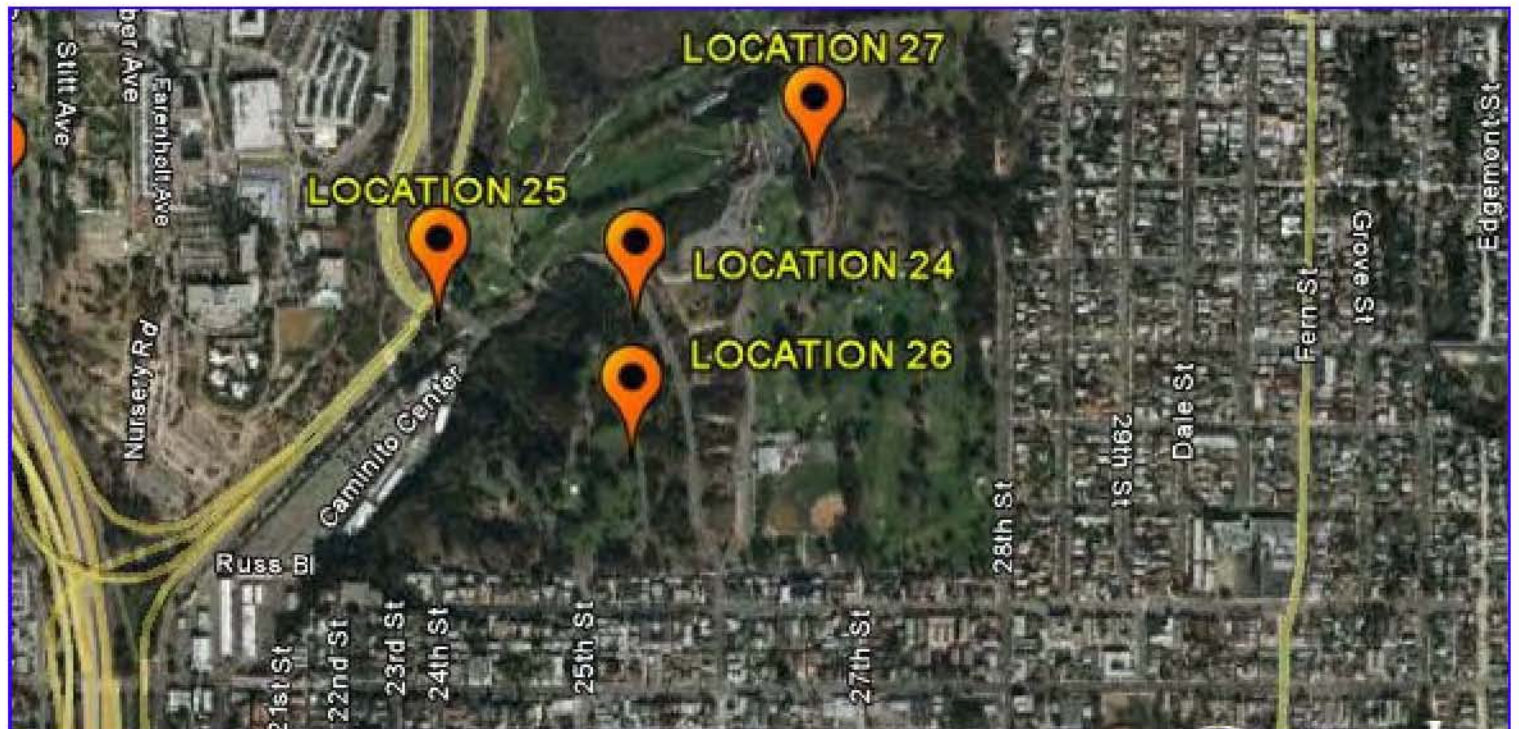
LOCATION 25



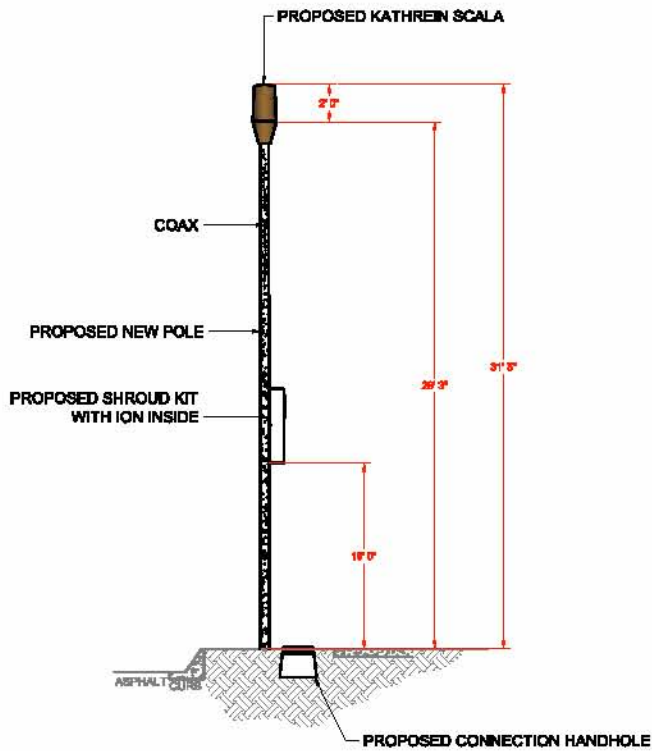
STREETLIGHT TYPICAL **N.T.S.**



DIGITAL PHOTO

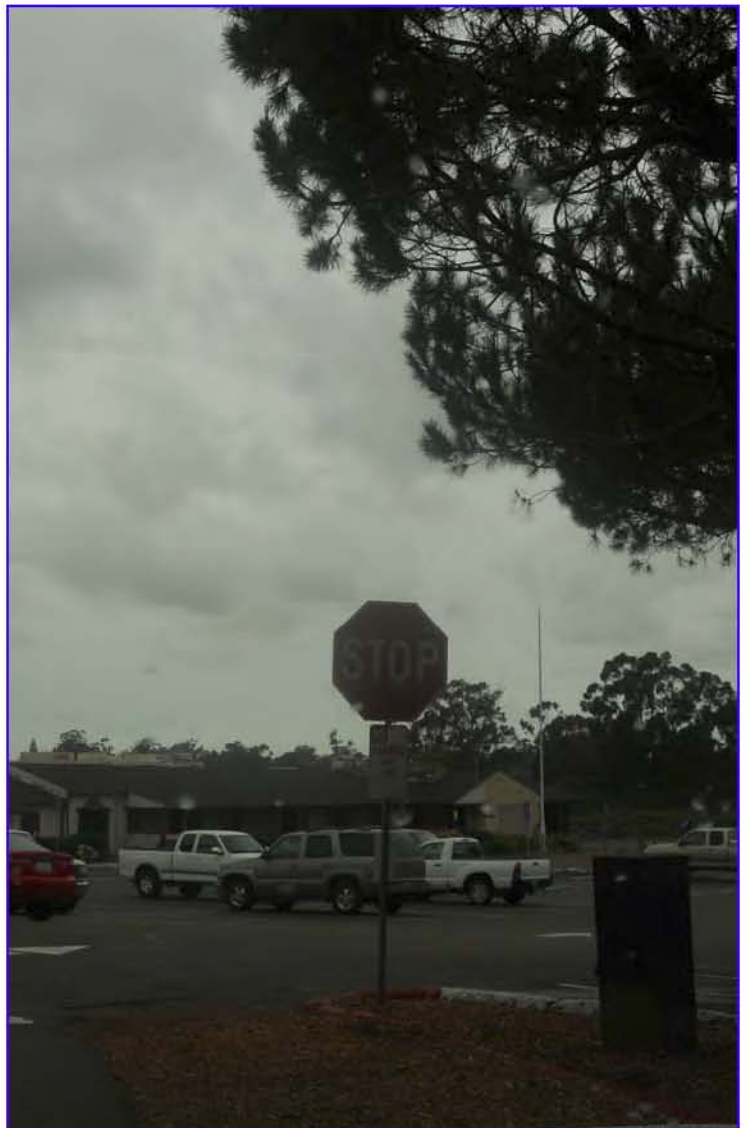


LOCATION 26 **SHEET 26 OF 28**

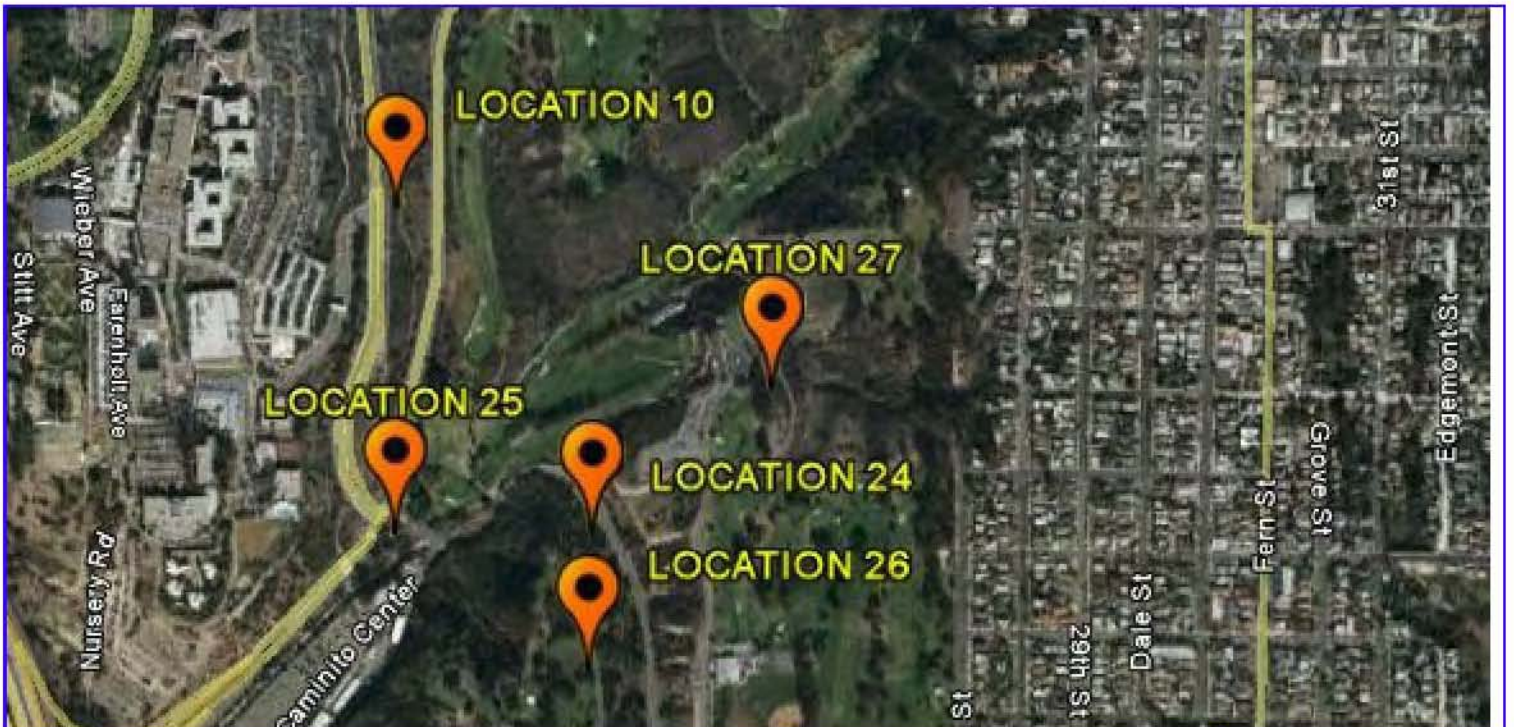


STREETLIGHT TYPICAL

N.T.S.



DIGITAL PHOTO



LOCATION 27

Electrical

Power Supply
Main power, Vac115 or 230

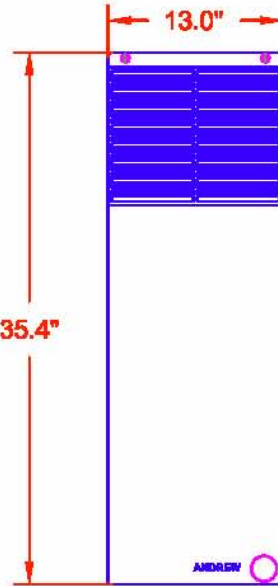
Power Consumption, Watts
ION-M7P/7P/85P/17P/19P1480
ION-M7P/7P/85P/17P/19P1585

Commercial 700 MHz

Frequency range, MHz
Uplink 698 to 718
Downlink 728 to 748
Output power per carrier *, dBm
.....+43.0 @ 1 carrier
.....+40.0 @ 2 carriers
.....+37.0 @ 4 carriers
.....+34.0 @ 8 carriers
DL output tolerance over frequency, dB±1
DL output tolerance over temperature, dB±0.5
Spurious emission<-13 dBm/MHz
Input ICP3, dBm
ICP3 optimized-13 min.
Noise figure optimized-19 min.
Noise figure, dB ICP3 optimized+10.5 max.
Noise figure optimized+8 max.

850 MHz

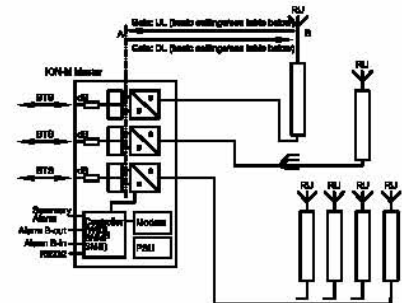
Frequency range, MHz
Uplink 824 to 848
Downlink 869 to 894
Nominal output power per carrier *, dBm
85P
Number of Carriers 1 2 4 8
GSMEDGE 43 40 37 34
CDMA2000 43 40 37 34
WCDMA 43 40 37 34
85HP
Number of Carriers 1 2 4 8
GSMEDGE 48 43 40 37
CDMA2000 48 43 40 37
WCDMA 48 43 40 37
DL output tolerance over frequency, dB±1
DL output tolerance over temperature, dB±0.5
Spurious emission<-13 dBm / 1 MHz
Input ICP3, dBm
ICP3 optimized-11 min.
Noise figure optimized-18 min.
Noise figure, dB ICP3 optimized+10
Noise figure optimized+8



Spacing required: 40 mm (2.0") around unit. Do not block air inlet and outlet. Vertical mounting compulsory.

ANDREW ION-M7P / 7P / 85(H)P/17(H)9/19P

SINGLE / DUALBAND OPTICAL SYSTEM



ION-M7P/7P/85P/17P/19P/19P

	Gain DL		Gain UL	
	ICP3 opt- mized	NF opt- mized	ICP3 opt- mized	NF opt- mized
700 MHz	38 dB	39 dB	36 dB	43 dB
700 MHz	38 dB	38 dB	36 dB	43 dB
800 MHz	38 dB	38 dB	36 dB	43 dB
1800 MHz	38 dB	38 dB	36 dB	43 dB
1700/2100 MHz	38 dB	38 dB	36 dB	43 dB

Mechanical ***

Height, width, depth mm (in) 900 x 330 x 300 (35.4 x 13.0 x 11.8)

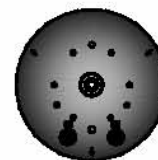
Weight, kg (lb)
ION-M7P/7P/85P/17P/19P 50 (110)
ION-M7P/7P/85P/17P/19P 55 (121)

Environmental

Operating temperature range, °C -33 to +50
Ingress protection
RF part IP68
Fan part IP55

KATHREIN SCALA
Dualband X-pol Omni Antenna
(Model #840-10501)

General Specifications	
Frequency Range	1710-2170 MHz
Gain	1710-2170 MHz 8 dBi (with 0-8 dB nulls, typical)
VSWR	<1.5:1
Impedance	50 ohms
Intermodulation (2x20w)	IM2: <-150 dBc
Polarization	+45° upper and lower band -45° upper and lower band
Connector	2 x 7-16 DIN female
Isolation Intersystem	>40 dB (885-980 // 1710-2170 MHz)
Maximum Input power 1710-2170 MHz	280 watts (at 85°C)
Radome Color	Gray
Weight	45 lb (20.4 kg)
Height	24 inches (609 mm)
Radome Diameter	18 inches (457 mm)
Equivalent flat plate area	1.8 m² (0.148 m²)
Wind survival rating*	100 mph (160 kph)
Mounting	Designed to be mounted on top of a utility pole using a custom mounting bracket supplied by the customer.



* Mechanical design is based on environmental conditions as stipulated in EIA-222-F (June 1996) and/or ETS 300 018-1-4 which include the static mechanical load imposed on an antenna by wind at maximum velocity.