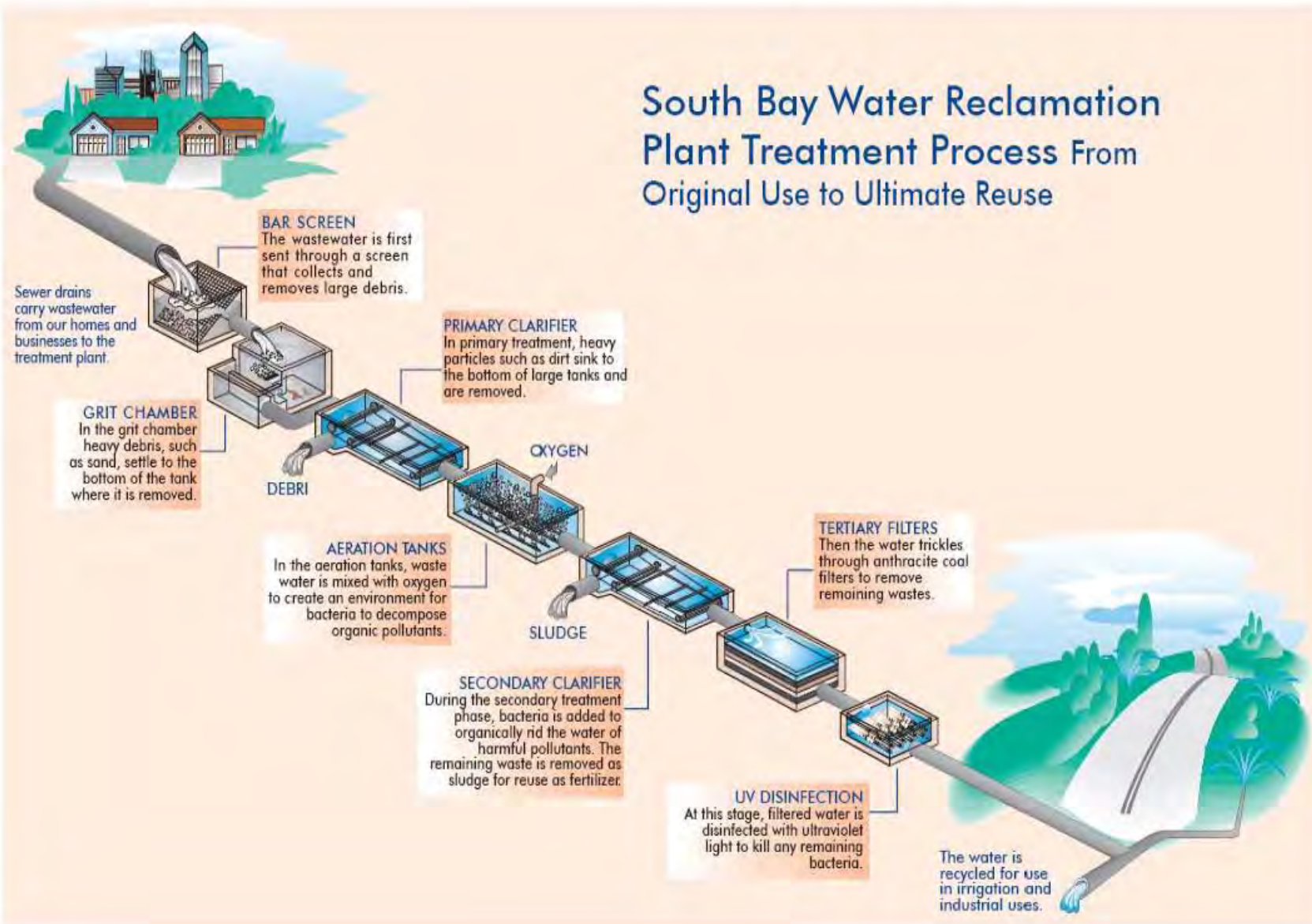


- III. Plant Operations Summary
  - A. Flows
  - B. Rain Days
  - C. Chemical Report
  - D. Facilities Out of Service Report

# South Bay Water Reclamation Plant Treatment Process From Original Use to Ultimate Reuse



SBWRP Annual Monitoring Report

2006 Flow Report

WASTEWATER MONTHLY AVERAGE FLOWS  
(Million Gallons / Day)

Mon	SB_INF_02	SB_OUTFALL_00	South Metro Interceptor Return	Recycled Production	Distributed Recycled	Dilution Water Added Recycled	Recycled Plant Internal use
Jan	4.18	3.72	.76			.00	.14
Feb	4.15	3.65	.69			.00	.03
Mar	4.16	3.70	.74			.00	.15
Apr	4.27	3.73	.74			.00	.13
May	5.00	4.31	.84			.00	.23
Jun	4.98	5.23	.81			.56	.11
Jul	5.53	3.99	.91	4.81	.37	.00	.62
Aug	6.43	5.06	.91	5.42	.28	.00	.57
Sep	7.76	5.92	1.00	7.03	.45	.00	.81
Oct	8.81	6.78	1.09	6.45	.53	.00	.92
Nov	8.86	6.67	1.21	5.67	.51	.00	.89
Dec	8.61	6.58	1.50	6.40	.27	.00	.87
avg	6.06	4.94	.93	5.96	.40	.05	.46
sum	72.73	59.33	11.20	35.78	2.41	.56	5.47

WASTEWATER MONTHLY TOTAL FLOWS  
(Million Gallons / Day)

Mon	SB_INF_02	SB_OUTFALL_00	South Metro Interceptor Return	Recycled Production	Distributed Recycled	Dilution Water Added Recycled	Recycled Plant Internal use
Jan	129.50	115.19	23.65			.01	4.26
Feb	116.22	102.11	19.40			.00	.97
Mar	129.08	114.69	22.91			.00	4.67
Apr	127.99	111.87	22.24			.00	4.02
May	154.86	133.61	26.08			.00	7.20
Jun	149.54	156.77	24.32			16.89	3.18
Jul	171.31	123.57	28.21	149.18	11.42	.00	19.28
Aug	199.28	156.77	28.06	168.08	8.67	.00	17.73
Sep	232.68	177.69	30.01	210.80	13.56	.00	24.21
Oct	273.22	210.03	33.78	199.93	16.37	.00	28.42
Nov	265.72	200.24	36.28	170.13	15.25	.00	26.67
Dec	267.04	204.13	46.45	198.34	8.44	.00	26.97
avg	184.70	150.56	28.45	182.74	12.29	1.41	13.97
sum	2216.44	1806.67	341.39	1096.46	73.71	16.90	167.58

A. Flows  
Daily Flows (mgd)

**Effluent to Ocean FLOW (mgd) – 2006**

Day	Jan	Feb	Mar	Apr	May	Jun	Jul	Aug	Sep	Oct	Nov	Dec	
1	3.81	3.66	3.85	3.25	3.71	3.15	4.51	3.49	6.73	6.36	7.21	7.48	
2	3.37	3.65	3.64	3.25	4.17	3.77	4.48	4.11	6.82	6.59	6.92	5.69	
3	3.40	3.73	3.46	3.50	4.51	4.46	4.27	4.15	6.84	6.22	6.39	7.24	
4	3.79	3.83	3.57	3.97	4.55	4.08	4.56	3.29	6.50	6.59	7.06	6.91	
5	3.63	3.57	3.60	3.60	4.11	4.44	4.25	3.89	6.88	6.17	6.90	6.94	
6	3.87	3.57	3.66	3.84	4.57	4.25	4.02	3.75	6.68	6.49	6.85	7.17	
7	3.76	3.84	3.72	3.86	4.30	3.83	2.94	3.96	5.99	6.25	6.75	6.83	
8	3.79	3.71	3.85	3.86	4.34	4.44	2.80	3.81	4.82	6.10	7.27	7.04	
9	3.88	3.81	3.55	3.67	4.46	4.38	3.30	3.97	5.96	6.77	6.99	6.96	
10	3.42	3.73	3.67	3.67	4.48	4.41	2.90	3.88	5.54	6.81	6.07	7.04	
11	3.29	2.22	3.66	3.83	4.52	4.33	3.42	4.63	5.95	7.19	6.96	6.68	
12	3.62	3.67	3.71	3.52	4.55	5.15	4.31	4.59	5.47	6.63	6.20	7.40	
13	3.96	3.70	3.75	3.72	4.60	4.73	3.55	4.48	5.78	6.62	6.63	6.55	
14	3.61	3.67	3.67	3.72	4.56	3.29	3.52	4.86	5.74	6.76	6.76	6.69	
15	3.75	3.74	3.70	3.79	4.52	4.41	4.89	5.15	5.86	7.00	6.21	6.77	
16	3.68	3.70	3.77	3.77	4.51	4.07	4.93	4.96	5.70	6.75	6.80	6.15	
18	3.78	3.69	3.66	3.78	4.34	5.66	3.54	5.92	5.83	6.80	7.11	6.30	
19	3.65	3.65	3.65	3.73	4.35	7.79	3.85	5.95	5.92	7.27	7.21	6.69	
20	3.76	3.68	3.75	3.75	4.29	4.80	4.09	5.92	5.51	7.67	7.17	5.12	
21	3.78	3.68	3.85	3.85	4.34	4.24	4.34	5.89	5.72	6.44	6.27	6.01	
22	3.79	3.67	3.64	3.72	4.53	4.55	4.08	5.79	5.63	6.85	6.93	4.96	
23	3.66	3.68	4.26	3.90	4.78	6.57	4.28	5.92	5.19	6.57	6.52	5.67	
24	3.84	3.48	3.59	3.81	3.24	14.03	3.89	5.97	5.67	6.57	5.26	5.28	
25	3.75	3.86	3.69	3.81	3.18	11.37	3.94	5.97	5.78	7.40	6.00	6.05	
26	3.81	3.83	3.87	3.71	4.39	6.98	4.66	5.89	5.38	6.77	6.61	6.47	
27	3.75	3.72	3.89	3.90	4.33	6.15	3.72	6.00	5.79	7.29	6.85	7.23	
28	3.84	3.67	3.41	3.78	4.28	4.33	3.83	6.02	5.55	6.97	6.87	7.26	
29	3.84		3.74	3.88	4.26	4.50	3.80	5.97	6.52	6.26	5.93	7.43	
30	4.05		3.64	3.71	4.20	4.19	3.99	6.38	6.31	7.11	6.58	7.52	
31	3.71		3.55		4.35		4.46	6.81		7.39		7.18	Annual Summary
<b>Average</b>	3.72	3.64	3.70	3.73	4.31	5.25	3.97	5.05	5.93	6.76	6.66	6.62	4.95
<b>Minimum</b>	3.29	2.22	3.41	3.25	3.18	3.15	2.80	3.29	4.82	6.10	5.26	4.96	2.22
<b>Maximum</b>	4.05	3.86	4.26	3.97	4.78	14.03	4.93	6.81	6.88	7.67	7.27	7.52	14.03
<b>Total</b>	111.64	98.41	111.02	108.15	129.32	152.35	119.12	151.37	172.06	202.66	193.28	198.71	1748

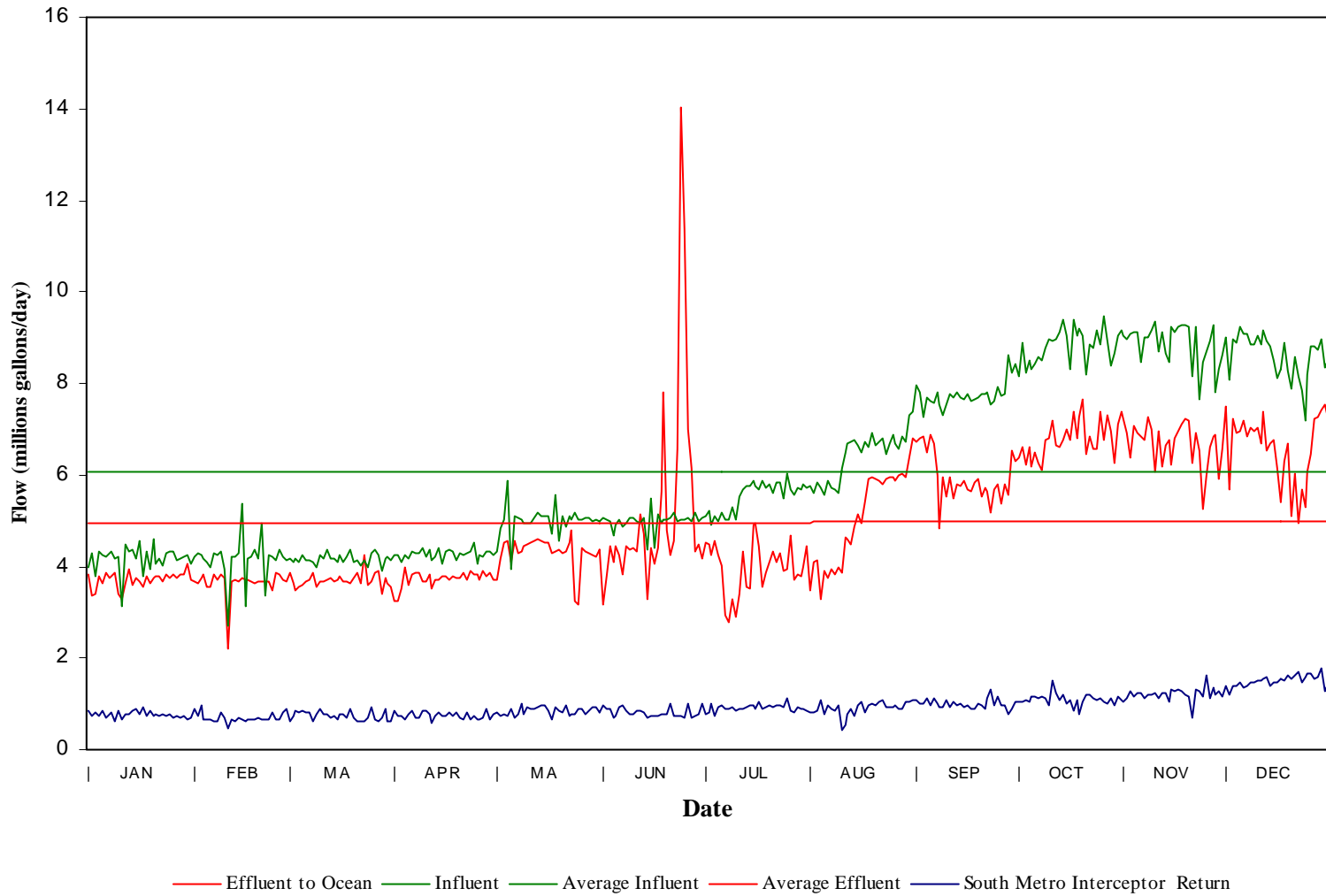
## INFLUENT FLOW (mgd) – 2006

Day	Jan	Feb	Mar	Apr	May	Jun	Jul	Aug	Sep	Oct	Nov	Dec	
1	3.98	4.20	4.17	4.24	4.31	5.05	5.09	5.75	7.98	8.15	9.04	9.02	
2	4.30	4.30	4.08	4.24	4.85	5.02	5.20	5.59	7.79	8.88	8.95	8.07	
3	3.78	4.24	4.18	4.11	5.01	5.00	4.89	5.82	7.27	8.22	9.08	8.95	
4	4.33	4.17	4.09	4.26	5.86	4.68	5.09	5.71	7.69	8.51	9.13	8.87	
5	4.24	4.08	4.27	4.19	3.94	4.92	4.97	5.58	7.61	8.31	9.12	9.25	
6	4.21	3.97	4.14	4.32	5.11	5.03	5.18	5.89	7.59	8.44	8.48	9.08	
7	4.29	4.28	4.14	4.30	5.06	4.88	5.04	5.71	7.80	8.58	9.00	9.09	
8	4.34	4.24	4.10	4.29	5.04	4.93	5.03	5.69	7.54	8.51	8.99	8.86	
9	4.18	4.34	4.00	4.39	4.93	5.07	5.31	5.62	7.32	8.79	9.15	8.85	
10	4.23	3.95	4.27	4.22	4.96	5.08	5.03	6.15	7.53	8.96	9.34	9.04	
11	3.12	2.72	4.16	4.36	4.93	4.99	5.54	6.51	7.75	8.94	8.68	8.84	
12	4.48	4.23	4.35	4.15	5.08	4.96	5.67	6.67	7.71	8.96	9.12	9.17	
13	4.31	4.21	4.19	4.21	5.19	5.05	5.74	6.74	7.80	9.11	8.64	8.92	
14	4.38	4.29	4.17	4.42	5.09	4.38	5.77	6.75	7.69	9.38	8.48	8.80	
15	4.16	5.36	4.09	4.07	5.12	5.49	5.88	6.64	7.65	9.03	9.22	8.51	
16	4.56	3.14	4.26	4.31	5.12	4.39	5.77	6.50	7.78	8.31	9.11	8.13	
17	3.77	4.17	4.10	4.35	4.70	5.13	5.70	6.72	7.63	9.38	9.24	8.32	
18	4.31	4.21	4.23	4.33	5.57	4.96	5.89	6.62	7.65	9.04	9.26	8.89	
19	3.93	4.36	4.36	4.12	4.57	5.01	5.73	6.92	7.68	9.18	9.27	8.27	
20	4.59	4.17	4.10	4.28	5.10	5.02	5.78	6.64	7.76	9.06	9.24	7.89	
21	4.06	4.94	4.14	4.27	4.87	5.05	5.61	6.74	7.78	8.21	8.17	8.58	
22	4.16	3.37	4.02	4.28	5.10	5.16	5.85	6.79	7.82	8.84	9.25	8.15	
23	4.01	4.24	4.13	4.31	5.03	4.98	5.85	6.46	7.55	8.79	7.65	7.86	
24	4.28	4.22	3.98	4.51	5.17	5.04	5.47	6.69	7.61	9.15	8.48	7.19	
25	4.31	4.12	4.29	4.06	5.02	5.02	6.03	6.86	7.93	8.86	8.69	8.20	
26	4.33	4.35	4.38	4.27	5.03	5.06	5.70	6.69	7.74	9.46	8.93	8.82	
27	4.15	4.22	4.24	4.23	5.06	4.98	5.57	6.58	7.76	8.92	9.26	8.81	
28	4.18	4.13	3.89	4.33	5.06	5.17	5.72	6.84	8.62	8.38	7.80	8.75	
29	4.21		4.19	4.32	4.98	4.99	5.68	6.73	8.23	8.67	8.32	8.98	
30	4.26		4.23	4.25	5.03	5.05	5.81	7.29	8.42	9.05	8.63	8.35	
31	4.06		4.14		4.97		5.72	7.39		9.15		8.53	Annual Summary
<b>Average</b>	4.18	4.15	4.16	4.27	5.00	4.98	5.53	6.43	7.76	8.81	8.86	8.61	6.07
<b>Minimum</b>	3.12	2.72	3.89	4.06	3.94	4.38	4.89	5.58	7.27	8.15	7.65	7.19	2.72
<b>Maximum</b>	4.59	5.36	4.38	4.51	5.86	5.49	6.03	7.39	8.62	9.46	9.34	9.25	9.46
<b>Total</b>	129.50	116.22	129.08	127.99	154.86	149.54	171.31	199.28	232.68	273.22	265.72	267.04	2216

## Blended Sludge Discharge to South Metro Interceptor (mgd) – 2006

Days	Jan	Feb	Mar	Apr	May	Jun	Jul	Aug	Sep	Oct	Nov	Dec	
1	0.84	0.90	0.63	0.85	0.83	0.98	0.79	0.83	1.09	1.04	1.05	1.41	
2	0.75	0.72	0.75	0.74	0.75	0.87	0.83	0.83	1.01	1.04	1.12	1.18	
3	0.81	0.95	0.86	0.75	0.76	0.88	1.02	0.86	1.02	1.09	1.29	1.41	
4	0.73	0.64	0.82	0.65	0.75	0.71	0.72	1.10	1.13	1.05	1.15	1.38	
5	0.85	0.65	0.84	0.79	0.87	0.75	0.93	0.79	0.95	1.15	1.23	1.46	
6	0.68	0.64	0.83	0.86	0.69	0.93	0.97	0.98	1.11	1.17	1.22	1.35	
7	0.77	0.62	0.80	0.68	0.77	0.97	0.89	0.89	1.02	1.11	1.13	1.41	
8	0.81	0.63	0.60	0.68	1.01	0.84	0.89	0.85	0.92	1.15	1.21	1.45	
9	0.62	0.83	0.77	0.84	0.79	0.76	0.93	0.96	0.91	1.14	1.18	1.46	
10	0.86	0.69	0.90	0.84	0.92	0.76	0.84	0.44	1.07	0.95	1.24	1.50	
11	0.66	0.47	0.78	0.76	0.88	0.84	0.87	0.53	0.92	1.49	1.14	1.51	
12	0.77	0.64	0.78	0.58	0.88	0.84	0.88	0.79	1.06	1.23	1.24	1.54	
13	0.78	0.62	0.70	0.74	0.91	0.83	0.94	0.87	0.98	1.09	1.24	1.58	
14	0.84	0.69	0.75	0.82	0.97	0.70	0.96	0.72	1.02	1.18	1.06	1.39	
15	0.87	0.65	0.67	0.73	0.95	0.75	0.97	0.97	0.91	1.00	1.33	1.45	
16	0.78	0.63	0.78	0.73	0.84	0.73	0.89	1.04	0.97	1.10	1.27	1.46	
17	0.92	0.66	0.79	0.81	0.65	0.75	1.04	0.81	0.88	0.85	1.32	1.53	
18	0.74	0.65	0.71	0.74	0.91	0.77	0.87	0.98	0.90	1.08	1.29	1.51	
19	0.84	0.64	0.89	0.81	0.84	0.78	0.94	1.02	1.02	0.79	1.20	1.61	
20	0.73	0.68	0.71	0.71	0.81	0.77	0.95	0.98	0.98	1.03	1.17	1.53	
21	0.79	0.65	0.60	0.64	0.96	1.00	0.93	1.05	0.87	1.18	0.71	1.62	
22	0.74	0.65	0.63	0.80	0.74	0.74	0.95	1.07	1.11	1.18	1.33	1.69	
23	0.79	0.67	0.63	0.65	0.77	0.72	0.95	0.93	1.32	1.11	1.29	1.47	
24	0.72	0.82	0.71	0.75	0.79	0.72	0.94	0.93	0.98	1.09	1.17	1.57	
25	0.76	0.66	0.92	0.64	0.89	0.71	1.12	0.93	1.16	1.12	1.62	1.67	
26	0.68	0.64	0.64	0.66	0.87	1.01	0.86	0.97	0.98	1.05	1.11	1.65	
27	0.74	0.81	0.63	0.69	0.76	0.69	0.81	0.89	0.98	0.99	1.35	1.53	
28	0.68	0.90	0.69	0.87	0.84	0.74	0.92	0.90	0.78	1.13	1.19	1.60	
29	0.75		0.87	0.67	0.92	0.77	0.87	1.03	0.90	0.98	1.26	1.79	
30	0.65		0.62	0.76	0.94	1.01	0.89	1.05	1.06	1.15	1.17	1.29	
31	0.70		0.61		0.82	0.79	0.85	1.07		1.07		1.45	Annual Summary
<b>Average</b>	0.76	0.69	0.74	0.74	0.84	0.81	0.91	0.91	1.00	1.09	1.21	1.50	0.93
<b>Minimum</b>	0.62	0.47	0.60	0.58	0.65	0.69	0.72	0.44	0.78	0.79	0.71	1.18	0.44
<b>Maximum</b>	0.92	0.95	0.92	0.87	1.01	1.01	1.12	1.10	1.32	1.49	1.62	1.79	1.79
<b>Total</b>	23.65	19.40	22.91	22.24	26.08	25.11	28.21	28.06	30.01	33.78	36.28	46.45	342

# South Bay Wastewater Reclamation Plant 2006 Daily Flows

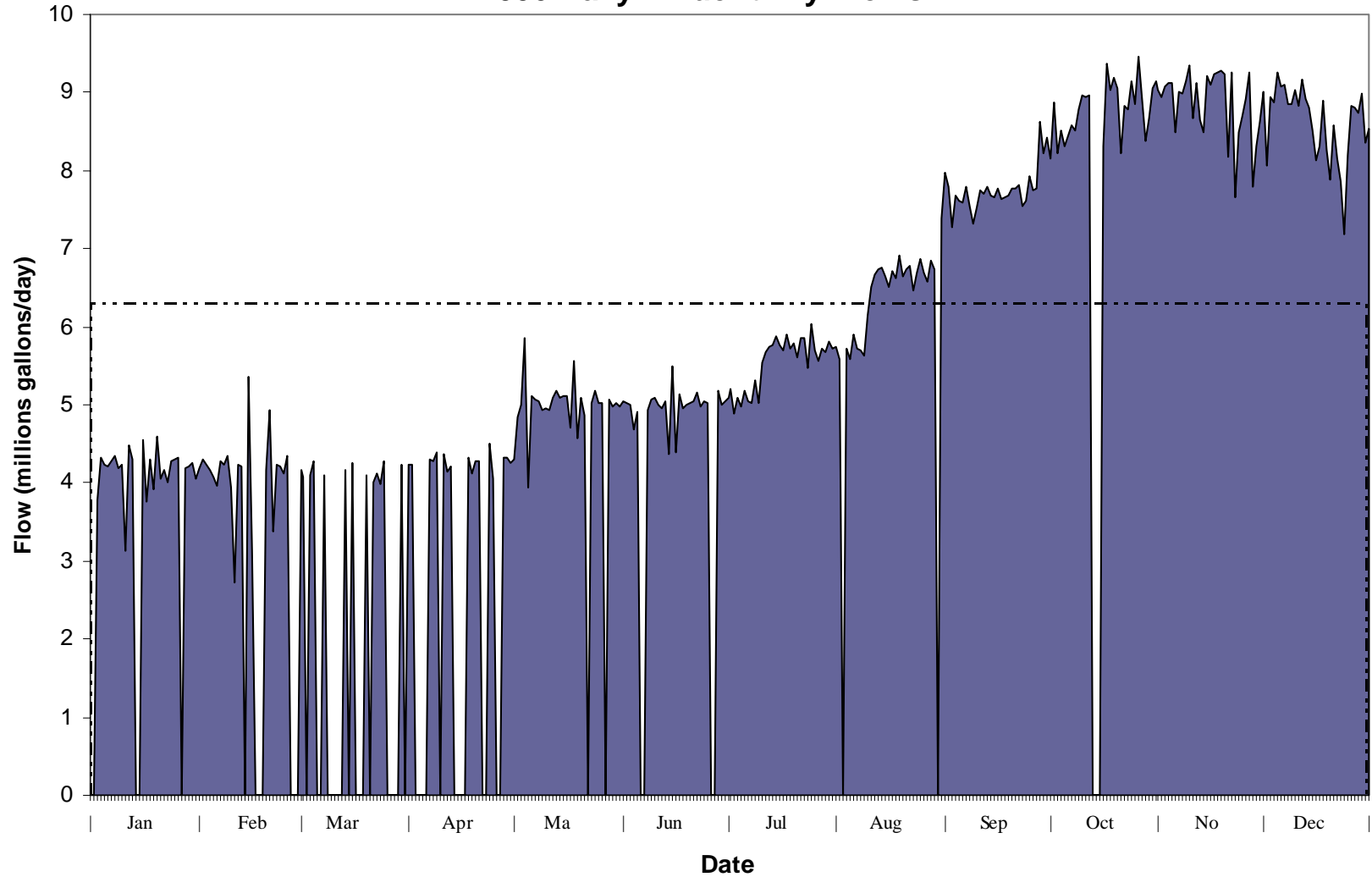


## Dry Weather Flows 2006 Influent

Day	Jan	Feb	Mar	Apr	May	Jun	Jul	Aug	Sep	Oct	Nov	Dec	
1		4.2	4.17	4.24	4.31	5.05	5.09	5.75	7.98	8.15	9.04	9.02	
2		4.3	4.08	4.24	4.85	5.02	5.2	5.59	7.79	8.88	8.95	8.07	
3	3.78	4.24			5.01	5	4.89		7.27	8.22	9.08	8.95	
4	4.33	4.17	4.09		5.86	4.68	5.09	5.71	7.69	8.51	9.13	8.87	
5	4.24	4.08	4.27		3.94	4.92	4.97	5.58	7.61	8.31	9.12	9.25	
6	4.21	3.97			5.11		5.18	5.89	7.59	8.44	8.48	9.08	
7	4.29	4.28		4.3	5.06		5.04	5.71	7.8	8.58	9	9.09	
8	4.34	4.24	4.1	4.29	5.04	4.93	5.03	5.69	7.54	8.51	8.99	8.86	
9	4.18	4.34		4.39	4.93	5.07	5.31	5.62	7.32	8.79	9.15	8.85	
10	4.23	3.95			4.96	5.08	5.03	6.15	7.53	8.96	9.34	9.04	
11	3.12	2.72		4.36	4.93	4.99	5.54	6.51	7.75	8.94	8.68	8.84	
12	4.48	4.23		4.15	5.08	4.96	5.67	6.67	7.71	8.96	9.12	9.17	
13	4.31	4.21		4.21	5.19	5.05	5.74	6.74	7.8		8.64	8.92	
14			4.17		5.09	4.38	5.77	6.75	7.69		8.48	8.8	
15		5.36			5.12	5.49	5.88	6.64	7.65		9.22	8.51	
16	4.56	3.14	4.26		5.12	4.39	5.77	6.5	7.78	8.31	9.11	8.13	
17	3.77				4.7	5.13	5.7	6.72	7.63	9.38	9.24	8.32	
18	4.31			4.33	5.57	4.96	5.89	6.62	7.65	9.04	9.26	8.89	
19	3.93			4.12	4.57	5.01	5.73	6.92	7.68	9.18	9.27	8.27	
20	4.59	4.17	4.1	4.28	5.1	5.02	5.78	6.64	7.76	9.06	9.24	7.89	
21	4.06	4.94		4.27	4.87	5.05	5.61	6.74	7.78	8.21	8.17	8.58	
22	4.16	3.37	4.02			5.16	5.85	6.79	7.82	8.84	9.25	8.15	
23	4.01	4.24	4.13		5.03	4.98	5.85	6.46	7.55	8.79	7.65	7.86	
24	4.28	4.22	3.98	4.51	5.17	5.04	5.47	6.69	7.61	9.15	8.48	7.19	
25	4.31	4.12	4.29	4.06	5.02	5.02	6.03	6.86	7.93	8.86	8.69	8.2	
26	4.33	4.35			5.03		5.7	6.69	7.74	9.46	8.93	8.82	
27							5.57	6.58	7.76	8.92	9.26	8.81	
28	4.18			4.33	5.06	5.17	5.72	6.84	8.62	8.38	7.8	8.75	
29	4.21			4.32	4.98	4.99	5.68	6.73	8.23	8.67	8.32	8.98	
30	4.26		4.23	4.25	5.03	5.05	5.81		8.42	9.05	8.63	8.35	
31	4.06				4.97		5.72	7.39		9.15		8.53	Annual Summary
<b>Average</b>	4.17	4.13	4.15	4.27	4.99	4.98	5.53	6.42	7.76	8.78	8.86	8.61	6.31
<b>Minimum</b>	3.12	2.72	3.98	4.06	3.94	4.38	4.89	5.58	7.27	8.15	7.65	7.19	2.72
<b>Maximum</b>	4.59	5.36	4.29	4.51	5.86	5.49	6.03	7.39	8.62	9.46	9.34	9.25	9.46
<b>Total</b>	108.53	90.84	53.89	72.65	144.70	129.59	171.31	186.17	232.68	245.70	265.72	267.04	1969



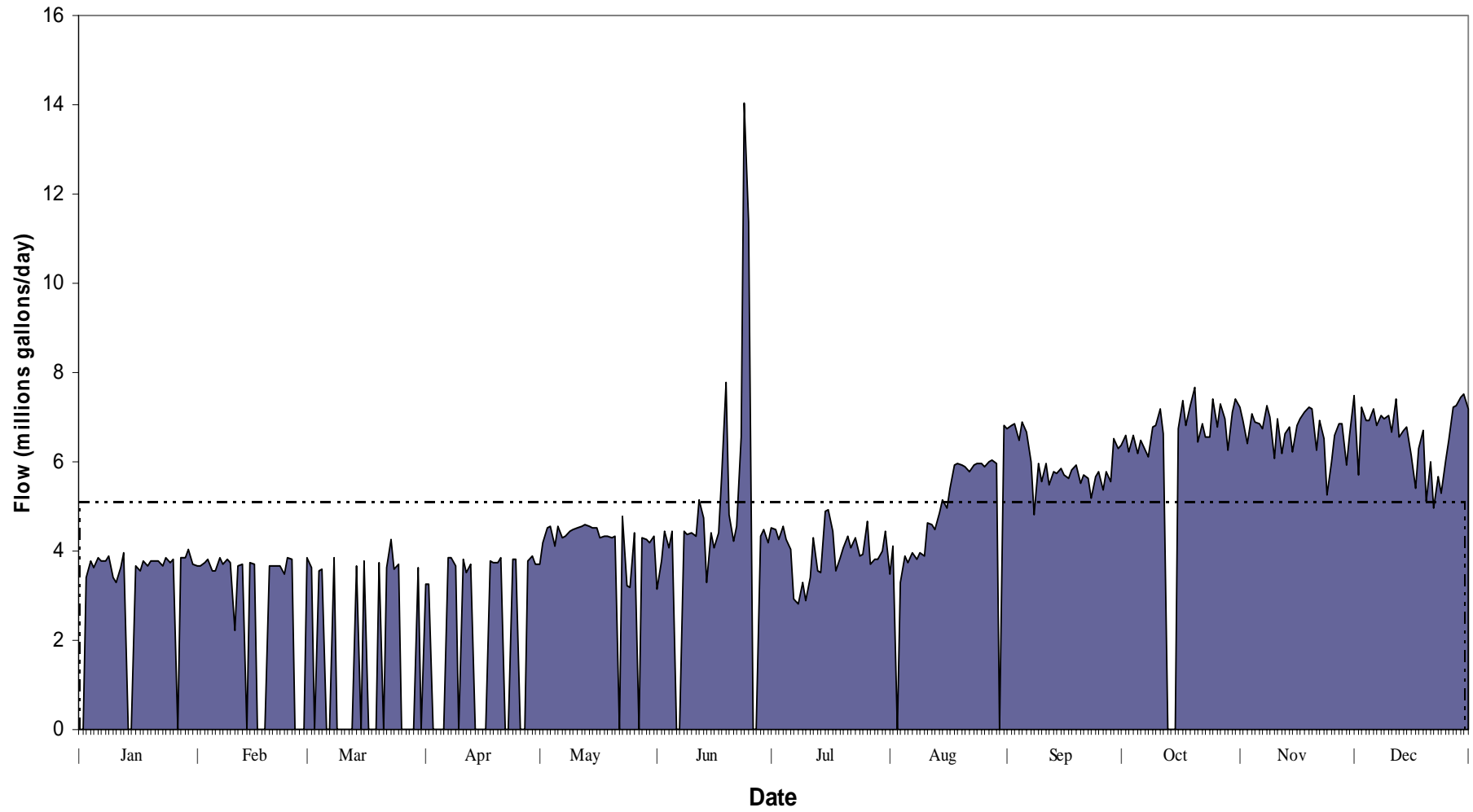
## South Bay Wastewater Reclamation Plant 2006 Daily Influent Dry Flows



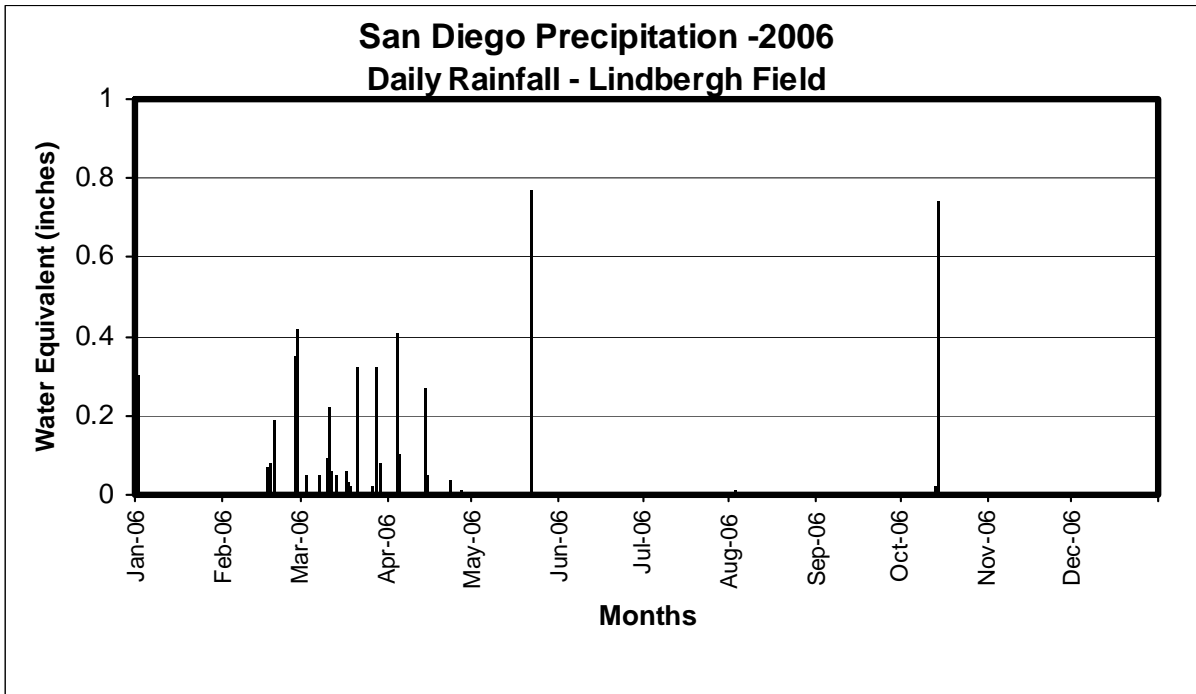
## Dry Weather Flows 2006 Effluent to Ocean

Day	Jan	Feb	Mar	Apr	May	Jun	Jul	Aug	Sep	Oct	Nov	Dec	
1		3.66	3.85	3.25	3.71	3.15	4.51	3.49	6.73	6.36	7.21	7.48	
2		3.65	3.64	3.25	4.17	3.77	4.48	4.11	6.82	6.59	6.92	5.69	
3	3.4	3.73			4.51	4.46	4.27		6.84	6.22	6.39	7.24	
4	3.79	3.83	3.57		4.55	4.08	4.56	3.29	6.5	6.59	7.06	6.91	
5	3.63	3.57	3.6		4.11	4.44	4.25	3.89	6.88	6.17	6.9	6.94	
6	3.87	3.57			4.57		4.02	3.75	6.68	6.49	6.85	7.17	
7	3.76	3.84		3.86	4.3		2.94	3.96	5.99	6.25	6.75	6.83	
8	3.79	3.71	3.85	3.86	4.34	4.44	2.8	3.81	4.82	6.1	7.27	7.04	
9	3.88	3.81		3.67	4.46	4.38	3.3	3.97	5.96	6.77	6.99	6.96	
10	3.42	3.73			4.48	4.41	2.9	3.88	5.54	6.81	6.07	7.04	
11	3.29	2.22		3.83	4.52	4.33	3.42	4.63	5.95	7.19	6.96	6.68	
12	3.62	3.67		3.52	4.55	5.15	4.31	4.59	5.47	6.63	6.2	7.4	
13	3.96	3.7		3.72	4.6	4.73	3.55	4.48	5.78		6.63	6.55	
14			3.67		4.56	3.29	3.52	4.86	5.74		6.76	6.69	
15		3.74			4.52	4.41	4.89	5.15	5.86		6.21	6.77	
16	3.68	3.7	3.77		4.51	4.07	4.93	4.96	5.7	6.75	6.8	6.15	
17	3.55				4.29	4.42	4.45	5.4	5.63	7.37	6.96	5.42	
18	3.78			3.78	4.34	5.66	3.54	5.92	5.83	6.8	7.11	6.3	
19	3.65			3.73	4.35	7.79	3.85	5.95	5.92	7.27	7.21	6.69	
20	3.76	3.68	3.75	3.75	4.29	4.8	4.09	5.92	5.51	7.67	7.17	5.12	
21	3.78	3.68		3.85	4.34	4.24	4.34	5.89	5.72	6.44	6.27	6.01	
22	3.79	3.67	3.64			4.55	4.08	5.79	5.63	6.85	6.93	4.96	
23	3.66	3.68	4.26		4.78	6.57	4.28	5.92	5.19	6.57	6.52	5.67	
24	3.84	3.48	3.59	3.81	3.24	14.03	3.89	5.97	5.67	6.57	5.26	5.28	
25	3.75	3.86	3.69	3.81	3.18	11.37	3.94	5.97	5.78	7.4	6	6.05	
26	3.81	3.83			4.39		4.66	5.89	5.38	6.77	6.61	6.47	
27							3.72	6	5.79	7.29	6.85	7.23	
28	3.84			3.78	4.28	4.33	3.83	6.02	5.55	6.97	6.87	7.26	
29	3.84			3.88	4.26	4.5	3.8	5.97	6.52	6.26	5.93	7.43	
30	4.05		3.64	3.71	4.2	4.19	3.99		6.31	7.11	6.58	7.52	
31	3.71				4.35		4.46	6.81		7.39		7.18	Annual Summary
<b>Average</b>	3.73	3.64	3.73	3.71	4.30	5.21	3.99	5.04	5.92	6.77	6.67	6.58	5.10
<b>Minimum</b>	3.29	2.22	3.57	3.25	3.18	3.15	2.80	3.29	4.82	6.10	5.26	4.96	2.22
<b>Maximum</b>	4.05	3.86	4.26	3.88	4.78	14.03	4.93	6.81	6.88	7.67	7.27	7.52	14.03
<b>Total</b>	96.90	80.01	48.52	63.06	124.75	135.56	123.57	146.24	177.69	189.65	200.24	204.13	1590

## South Bay Wastewater Reclamation Plant 2006 Daily Effluent to Ocean Dry Flows



B. Rain Days



**Total Annual precipitation = 5.25, Maximum =0.77, Trace =0**

First Quarter		Second Quarter		Third Quarter		Fourth Quarter	
Date	Rain	Date	Rain	Date	Rain	Date	Rain
1-Jan-06	0.06	3-Apr-06	T	3-Aug-06	0.01	13-Oct-06	0.02
2-Jan-06	0.3	4-Apr-06	0.41	30-Aug-06	T	14-Oct-06	0.74
14-Jan-06	T	5-Apr-06	0.1			15-Oct-06	T
15-Jan-06	T	6-Apr-06	T				
27-Jan-06	T	10-Apr-06	T				
14-Feb-06	T	14-Apr-06	0.27				
17-Feb-06	0.07	15-Apr-06	0.05				
18-Feb-06	0.08	16-Apr-06	T				
19-Feb-06	0.19	17-Apr-06	T				
27-Feb-06	0.35	22-Apr-06	T				
28-Feb-06	0.42	23-Apr-06	0.04				
3-Mar-06	0.05	26-Apr-06	T				
6-Mar-06	T	27-Apr-06	0.01				
7-Mar-06	0.05	22-May-06	0.77				
9-Mar-06	T	27-May-06	T				
10-Mar-06	0.09	6-Jun-06	T				
11-Mar-06	0.22	7-Jun-06	T				
12-Mar-06	0.06	26-Jun-06	T				
13-Mar-06	0.05	27-Jun-06	T				
15-Mar-06	T						
17-Mar-06	0.06						
18-Mar-06	0.03						
19-Mar-06	0.02						
21-Mar-06	0.32						
26-Mar-06	0.02						
27-Mar-06	T						
28-Mar-06	0.32						
29-Mar-06	0.08						
31-Mar-06	T						
<b>TOTALS</b>	2.84		1.64		0.01		0.76

## C. Chemical Report

### South Bay Water Reclamation Plant - Annual Chemical Usage Report

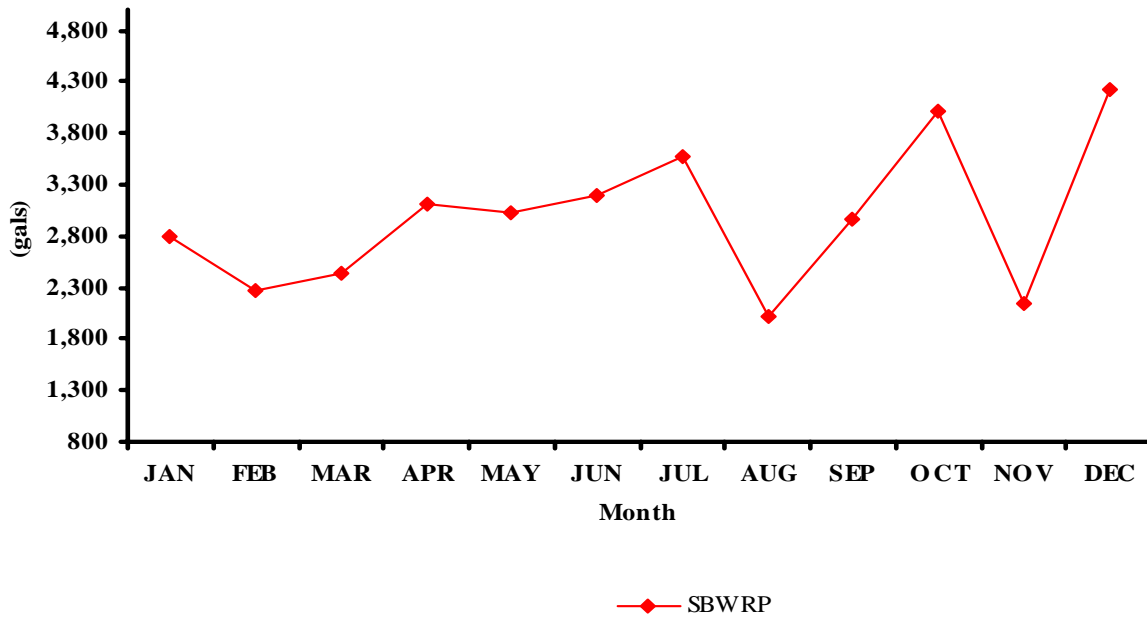
2006

Mon	Hypochlorite Gallons	Alum Chloride Gallons	Polymer Catalytic Gallons	Sodium Hydroxide Gallons	Ferric Chloride Gallons
Jan	22,850	790	4,986	2,789	169
Feb	19,269	301	6,757	2,272	190
Mar	20,174	864	145	2,434	145
Apr	19,968	22	183	3,118	68
May	18,847	672	9,964	3,021	52
Jun	24,753	110	2,482	3,185	127
Jul	22,702	180	1,802	3,576	192
Aug	26,381	154	2,688	2,008	127
Sep	27,556	31	1,657	2,970	370
Oct	28,596	616	11,430	4,020	0
Nov	32,272	0	4,100	2,140	0
Dec	18,043	0	11,791	4,215	0
ave	23,451	312	4,832	2,979	120
sum	281,412	3,740	57,986	35,748	1,440

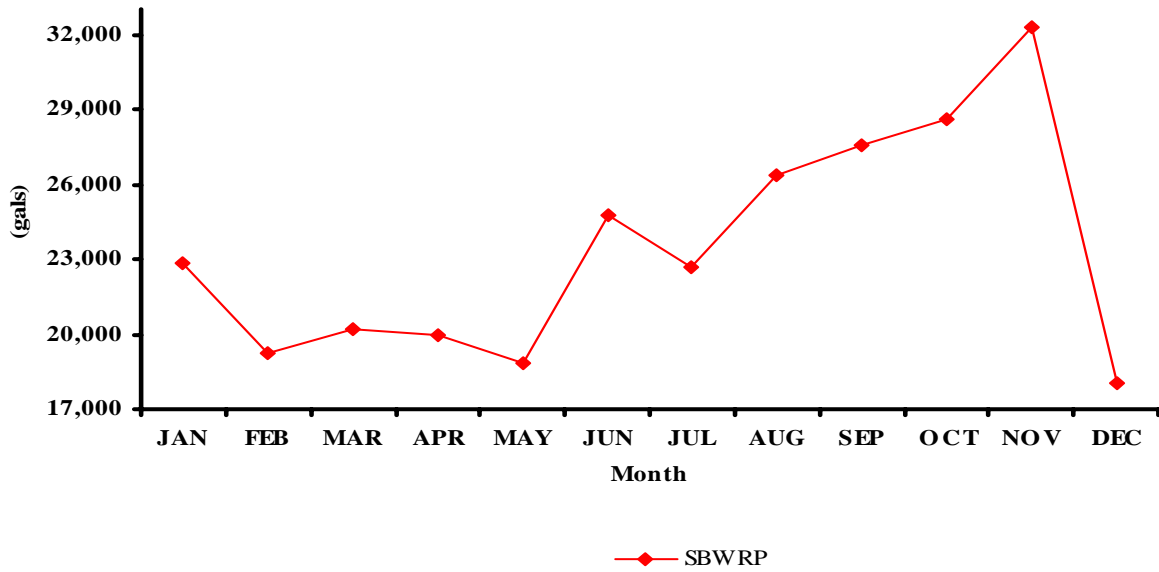
**Ferric Chloride  
2006 Monthly Chemical Usage**



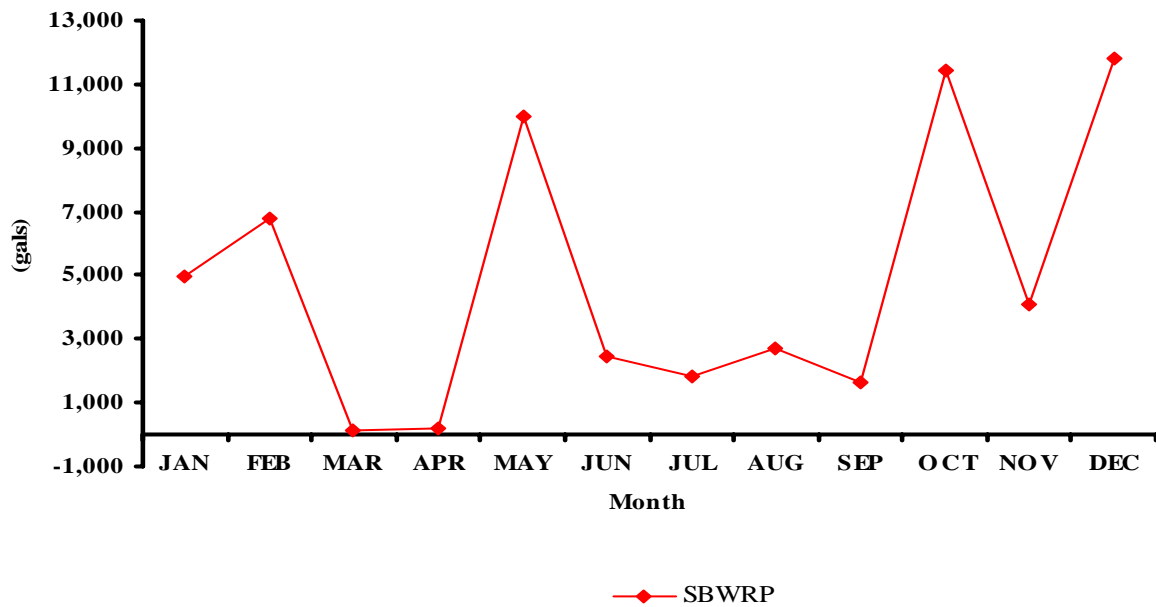
**Caustic  
2006 Monthly Chemical Usage**



### Sodium Hypochlorite 2006 Monthly Chemical Usage

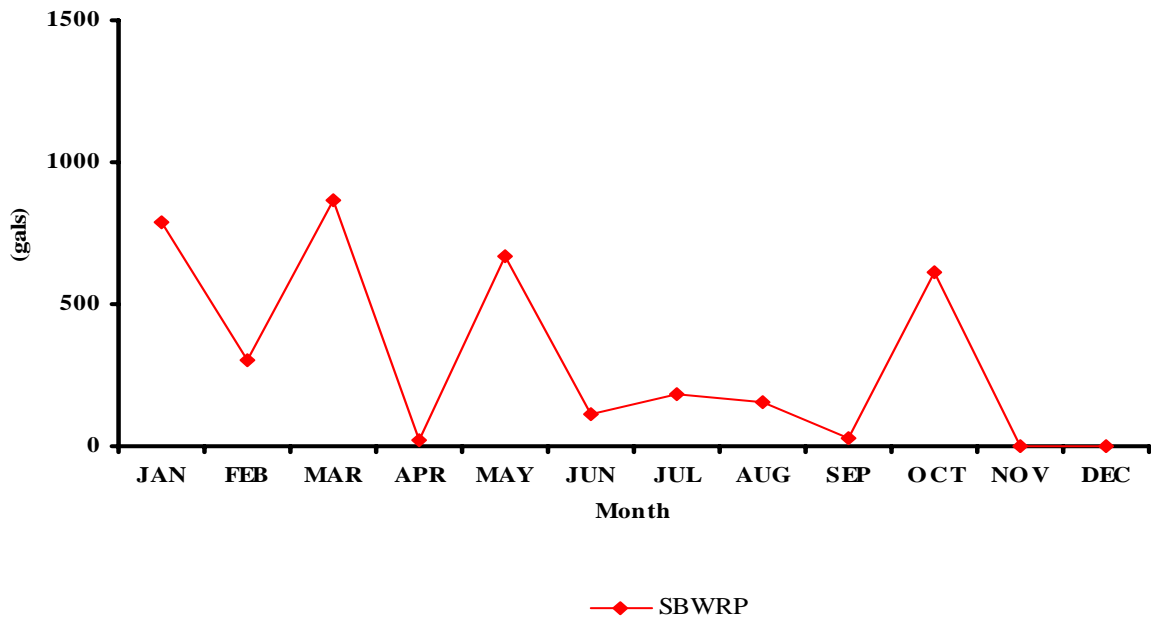


### Polymer E. Catalytic 2006 Monthly Chemical Usage





### Alum 2006 Monthly Chemical Usage



D. Facilities Out of Service Report

**2006 SBWRP FACILITIES OUT OF SERVICE REPORT**

FACILITIES OOS BY DATE

Bar Screens

	FROM	TO	REASON
Bar Screen 1	03/20/06	03/20/06	Bolt is loose. Tighten.
Bar Screen 1	06/14/06	06/14/06	The bar screen failed on torque and will not reset.
Bar Screen 1	06/16/06	06/16/06	Screen is going into a fail to park, please check switch
Bar Screen 1	05/11/06	06/19/06	Drive sprockets in dire need of replacement. May not be able to wait for screen #2 to return to service. Maybe ops can accommodate without shutting down plant, i.e.; When gaps stops pumping due to low flow and we feed off of the EQ?
Bar Screen 1	06/20/06	10/04/06	Screen fails on fail to rake, appears not to be parking properly. Motor is making noise.
Bar Screen 1	04/11/06	04/20/06	Reinstall safety cage.
Bar Screen 2	04/11/06	04/21/06	Sprockets and pin rack rollers are worn to the the point of needing replacement. Unit already down for replacement/repair of compactor. Now would be a good time to do the work. Parts in storeroom. 3 people for teardown and assembly, 2 for replacing rollers after pin racks removed and to R&R sprockets.
Bar Screen 2	04/26/06	05/04/06	Lubricators not working. Clean and fill with lighter grease, EP1. One of the most upper frame bolts is loose and needs tightening.

Primary Sedimentation

	FROM	TO	REASON
Pri Sed Tank 2	03/08/06	03/08/06	Unplug the withdraw line to the tank.
Pri Sed Tank 2	08/03/06	03/12/07	sludge collector fails while running, sometimes you can not reset it.
Pri Sed Tank 3	04/17/06	05/18/06	Clean rags out of influent diffusers
Pri Sed Tank 3	05/16/06	05/10/06	Provide vactor assistance to the MMC to clean rags out of influent diffusers
Pri Sed Tank 3	07/11/06	07/11/06	The tank draw off valve keeps failing on GEN fail and appears to be over torque.
Pri Sed Tank 3	07/12/06	07/12/06	The tank draw off valve keeps failing on GEN fail and appears to be over torque.
Pri Sed Tank 3	01/31/06	03/07/06	Sludge collector shows a fail to stop alarm and running on DCS, even thou it is stopped in the field, also show many status alarm for collector, at the DCS, but everything shows normal at field control panel.
Pri Sed Tank 3	05/10/06	05/16/06	During PM noted sprocket badly worn. This is the type that can be turned around so chain meshes on opposite of sprocket teeth.
Pri Sed Tank 4	10/18/06	10/18/06	Replace broken shear pin on sludge collector
Pri Sed Tank 5	05/10/06	05/10/06	During PM noted drive will not slip and sprocket worn Replace drive/sprocket assy. Have parts prior to schedule.

## Aeration Basins

	FROM	TO	REASON
Aer Basin 4	10/24/06	10/24/06	Remove both D.O. probes from this basin and place one in basin #3, and one in basin #8
Aer Basin 7	02/22/06	05/31/06	The diffusers on basin 7 may be plugged, Tank is drained. Please inspect diffusers, repair as necessary.
Aer Basin 7	06/21/06		Flow control valve [15FCV370] will not respond to DCS commands or the local pushbuttons, only way to modulate valve is by turning the hand crank. Valve also shows a general fail alarm that will not clear.
Aer Basin 7	09/22/06	09/26/06	Set up diesel pump to pump from basin #7 to basin #4, I&C will have to move the D.O. probes' when transfer is completed.
Aer Basin 8	02/22/06	02/22/06	There appears to be a leak in zone 1 and 2, water comes out after being blown down for 2 days, Tank is still in service. [This tank will be taken out of service after aeration basin #7 is repaired and on line.
Aer Basin 8	03/08/06	03/09/06	Clean and calibrate zones 2 & 4.
Aer Basin 8	06/06/06	06/07/06	PT's set up dewatering pump on tank 8 and pump into tank 7. I&C move DO probes from tank 8 to tank 7.
Aer Basin 8	06/13/06	06/13/06	Assist tank crew with the mixer in the tank.

## Secondary Clarifiers

	FROM	TO	REASON
Sec. Clar. 1	03/24/06	05/05/06	Scum tipping trough will not tip low enough in reverse. Limits need to be reset .
Sec. Clar. 1	07/11/06	07/18/06	Cut shaft and new keyway as per Anthony Wujick's instructions.
Sec. Clar. 1	07/17/06	07/13/06	SBWRP #1 Secondary Scum Trough. Inspect and repair scum trough.
Sec. Clar. 1	07/18/06	07/20/06	Paint shaft and gears.
Sec. Clar. 1	07/24/06	08/14/06	Scum trough does not tip properly, please inspect possible gear problem
Sec. Clar. 1	08/08/06	10/05/06	Complete repair of scum tripping trough. Scaffolding will need to be set up.
Sec. Clar. 1	09/22/06	10/25/06	Fabricate bracket for hose reel on secondary tank #1 like you did for tank #5.
Sec. Clar. 1	10/25/06	10/28/06	Install hose reel on secondary tank #1
Sec. Clar. 2	01/04/06	01/18/06	Spray valve SB20MOV324 for secondary scum collector #2 continues to alarm 'Gen Fail'. After clearing the general fail, the strategy also continues to fail. Please trouble shoot the general fail to get the strategy running.
Sec. Clar. 2	09/21/06	05/02/07	Trouble shoot sludge collector. Showing low speed alarm.
Sec. Clar. 3	01/17/06	03/27/06	Spray valve 20-MOV-332 is in Com/Gen fail and will not clear. Please trouble shoot and repair.
Sec. Clar. 3	04/17/06	05/17/06	ESTIMATE - Welder to fabricate a mounting bracket for a hose reel on Sec. Clar. #3
Sec. Clar. 3	06/12/06	06/21/06	Machinist to fabricate parts for the mounting bracket as

			per Michael O'Day
Sec. Clar. 3	06/12/06	06/20/06	Welder to fabricate a mounting bracket for a hose reel on Sec. Clar. #3
Sec. Clar. 4	04/24/06	04/28/06	Remove & replace gear from scum collector shaft.
Sec. Clar. 4	04/24/06	06/21/06	Repair Scum trough
Sec. Clar. 4	05/09/06	05/18/06	Remove & replace gear on scum trough
Sec. Clar. 4	05/18/06	09/19/06	Epoxy coat saddle per Daniel Agas
Sec. Clar. 4	06/22/06	06/26/06	Set limits on scum trough
Sec. Clar. 4	06/27/06	08/24/06	Repair drive shaft keyway as per Anthony Wujick's instructions
Sec. Clar. 5	01/04/06	02/06/06	Sludge collector failed on low speed after being worked on by tank cr3w, tank is de-watered to and ready for entry.
Sec. Clar. 5	02/08/06	02/08/06	The sludge collector failed on slip. Inspect and repair.
Sec. Clar. 5	02/09/06	02/10/06	Mark and monitor flights. Test motion sensor.
Sec. Clar. 5	02/13/06	02/21/07	Slow trip failure, trouble shoot. Slow motion alarm.
Sec. Clar. 5	04/05/06	04/03/06	Sec. clarifier sludge collector #5 will not run in local or DCS . Please inspect or repair.
Sec. Clar. 6	08/17/06	12/05/06	Valve No.20MOV363 has Com Gen alarm and would not clear. Troubleshoot and make necessary repair.
Sec. Clar. 7	05/01/06	05/01/06	Trouble shoot flights over torque.
Sec. Clar. 8	04/05/06	04/05/06	Slip the shear pin so that clarifier can be put on line.
Sec. Clar. 8	06/27/06	06/27/06	Replace shear pin on drive unit
Sec. Clar. 9	08/01/06	08/01/06	Resolve issue with sludge collector showing a running status while it is secured.
Sec. Clar. 9	09/22/06	10/25/06	]Fabricate bracket for hose reel on secondary tank #9 like you did for tank #5.
Sec. Clar. 9	10/25/06	10/28/06	Install hose reel on secondary tank #9

### Tertiary Filters

	FROM	TO	REASON
Ter. Filter 1	11/16/06		Filter 1 FLE valve has no power. The DCS reflected COMM FAIL, GEN FAIL but, when trying to reset the valve, discovered no power.
Ter. Filter 2	08/09/06	08/14/06	FLE valve does not respond to commands from DCS or from local controls, does open with hand wheel valve control.
Ter. Filter 2	09/11/06	11/20/06	Filter 2 FLE valve 25FVC223 continues to alarm in GEN FAIL. The filter has been placed in OOS.
Ter. Filter 3	04/11/06	05/01/06	The flow control valve, 25FCV233, shows completely closed and the level is 5.2 ft and won't rise. Check the valve stem to see if it is actually moving the valve.
Ter. Filter 3	05/31/06	06/13/06	Contractors broke the SHC injection line for filter 3 effluent pipe. The line was already isolated and the break is on the discharge side of the isolation valve. Please repair the 1/2 inch PVC line.
Ter. Filter 3	07/27/06	07/31/06	Air relief valve 25PCV238 leaks by. The valve is associated with filter 3 filter effluent in the RAS gallery. The isolation valve to the relief valve is now secured.
Ter. Filter 3	08/10/06	08/29/06	FLE valve goes into deviation alarm 8 to 10 times per day.

Ter. Filter 4	08/17/06	08/29/06	FLE valve goes into a deviation alarm 10 to 20 times each day.
Ter. Filter 7	04/26/06	08/14/06	tertiary filter # 7 valve 25-mov-272 keep failing on general communication and if put in local at valve will not switch to local on DCS, it stays in DCS auto.
Ter. Filter 7	08/29/06	09/05/06	Valve 25MOV 725 WW drain valve shows no status change on DCS. Operates locally but DCS does not show local status either. Please inspect and repair.
Ter. Filter 7	12/13/06	01/22/07	SB25FCV723 goes in and out of general fail goes 100% open always

## FACILITIES OOS BY PROCESS

### Bar Screens

	DATES OOS
Bar Screen 1	03/20/06-03/20/06, 06/14/06-06/14/06, 06/16/06-06/16/06, 05/11/06-06/19/06, 06/20/06-10/04/06, 04/11/06-04/20/06
Bar Screen 2	04/11/06-04/21/06, 04/26/06-05/04/06

### Primary Sedimentation

	DATES OOS
Pri Sed Tank 2	03/08/06-03/08/06, 08/03/06-03/12/07
Pri Sed Tank 3	04/17/06-05/18/06, 05/16/06-05/10/06, 07/11/06-07/11/06, 07/12/06-07/12/06, 01/31/06-03/07/06, 05/10/06-05/16/06
Pri Sed Tank 4	10/18/06-10/18/06
Pri Sed Tank 5	05/10/06-05/10/06

### Aeration Basins

	DATES OOS
Aer Basin 4	10/24/06-10/24/06
Aer Basin 7	02/22/06-05/31/06, 09/22/06-09/26/06
Aer Basin 8	02/22/06-02/22/06, 03/08/06-03/09/06, 06/06/06-06/07/06, 06/13/06-06/13/06

### Secondary Clarifiers

	DATES OOS
Sec. Clar. 1	03/24/06-05/05/06, 07/11/06-07/18/06, 07/17/06-07/13/06, 07/18/06-07/20/06, 07/24/06-08/14/06, 08/08/06-10/05/06, 09/22/06-10/25/06, 10/25/06-10/28/06
Sec. Clar. 2	01/04/06-01/18/06, 09/21/06-05/02/07
Sec. Clar. 3	01/17/06-03/27/06, 04/17/06-05/17/06, 06/12/06-06/21/06, 06/12/06-06/20/06
Sec. Clar. 4	04/24/06-04/28/06, 04/24/06-06/21/06, 05/09/06-05/18/06, 05/18/06-09/19/06, 06/22/06-06/26/06, 06/27/06-08/24/06
Sec. Clar. 5	01/04/06-02/06/06, 02/08/06-02/08/06, 02/09/06-02/10/06, 02/13/06-02/21/07, 04/05/06-04/03/06
Sec. Clar. 6	08/17/06-12/05/06
Sec. Clar. 7	05/01/06-05/01/06

Sec. Clar. 8	04/05/06-04/05/06, 06/27/06-06/27/06
Sec. Clar. 9	08/01/06-08/01/06, 09/22/06-10/25/06, 10/25/06-10/28/06

Tertiary Filters

	DATES OOS
Ter. Filter 1	11/16/06-11/16/06
Ter. Filter 2	08/09/06-08/14/06, 09/11/06-11/20/06
Ter. Filter 3	04/11/06-05/01/06, 05/31/06-06/13/06, 07/27/06-07/31/06, 08/10/06-08/29/06
Ter. Filter 4	08/17/06-08/29/06
Ter. Filter 7	04/26/06-08/14/06, 08/29/06-09/05/06, 12/13/06-01/22/07