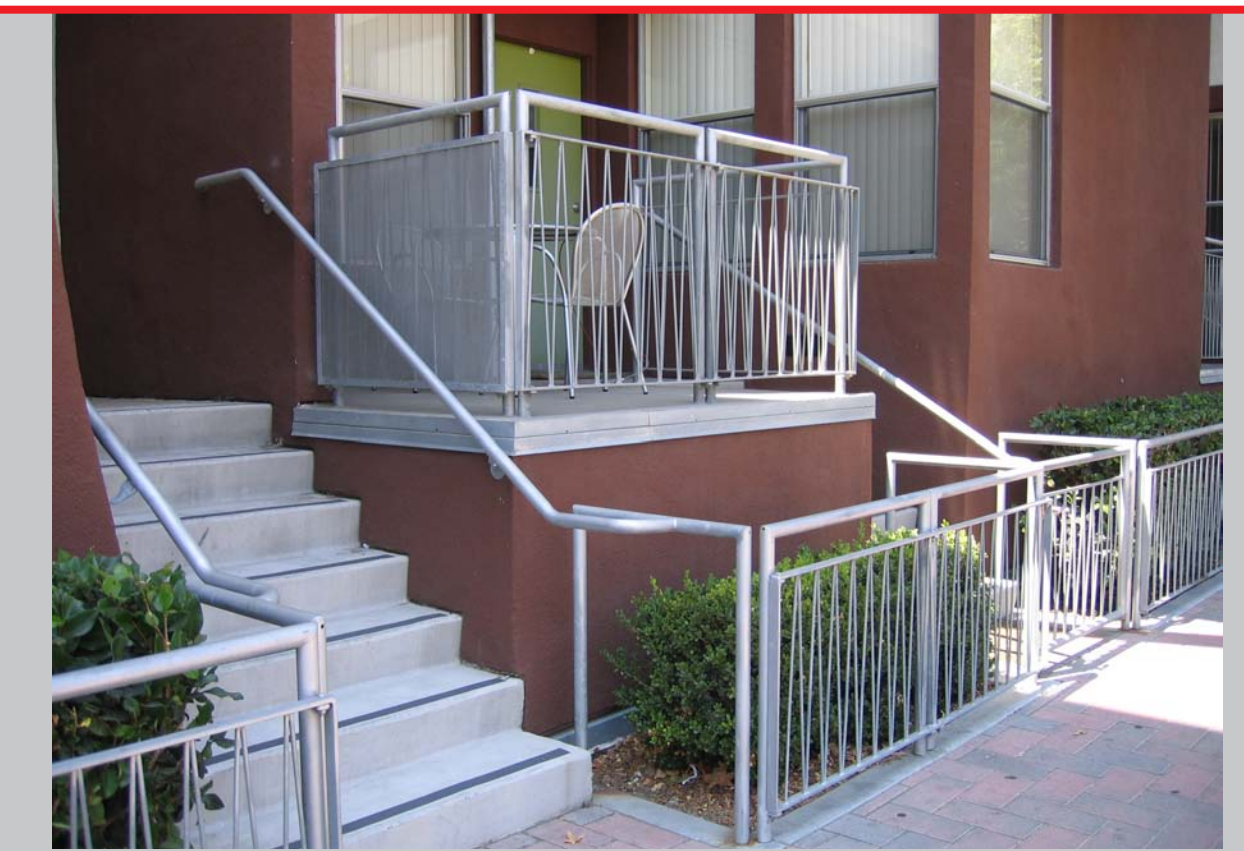




- Design **Buildings** to face the street and contribute to an active street environment (Diseñar edificios con orientación hacia la calle y contribuyendo a un ambiente activo)



Porches, Stoops, Balconies, Patios, Awnings, Bay Windows, Yards and other design elements to create "eyes on the street" and a pleasant street environment

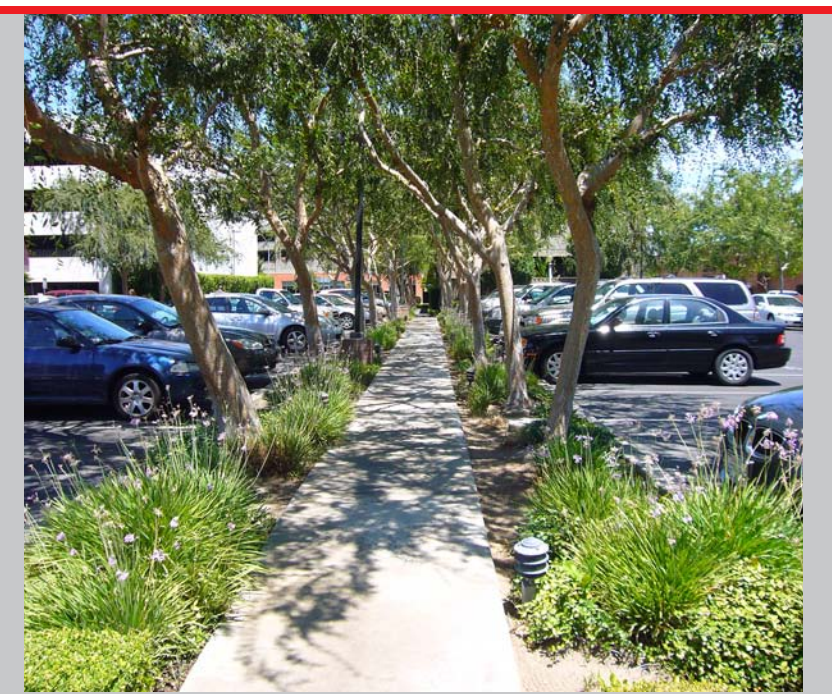
Street Orientation, Consistent Setbacks, Pedestrian Access, Visibility & Parking in Rear of Lot

Diversity and Facade Modulation

Crime Prevention through Environmental Design (CPTED)

Materials, Colors, Textures and Decorative Details

- Improve **Streets and Paths** to foster a safe and pleasant pedestrian environment (Mejorar las calles y los andares para proporcionar un ambiente seguro y placentero para peatones)



Narrow Streets and 11 to 15-foot wide sidewalks

Landscaped Parkways & Sidewalk Cafes

Crosswalks & Pop-Outs, Elevated Pedestrian Crossings, Pedestrian Islands & Medians

Bicycle Lanes & Parking

Street Furniture, Lighting & Amenities

Traffic Calming

Connecting Paths & Paseos

- Enhance and restore **Chollas Creek** to make it a major community resource (Acentuar y restaurar el Chollas Creek para que sirva como un recurso mayor para la comunidad)



Trails Bridges, & Paths

Wetlands & Upland Restoration

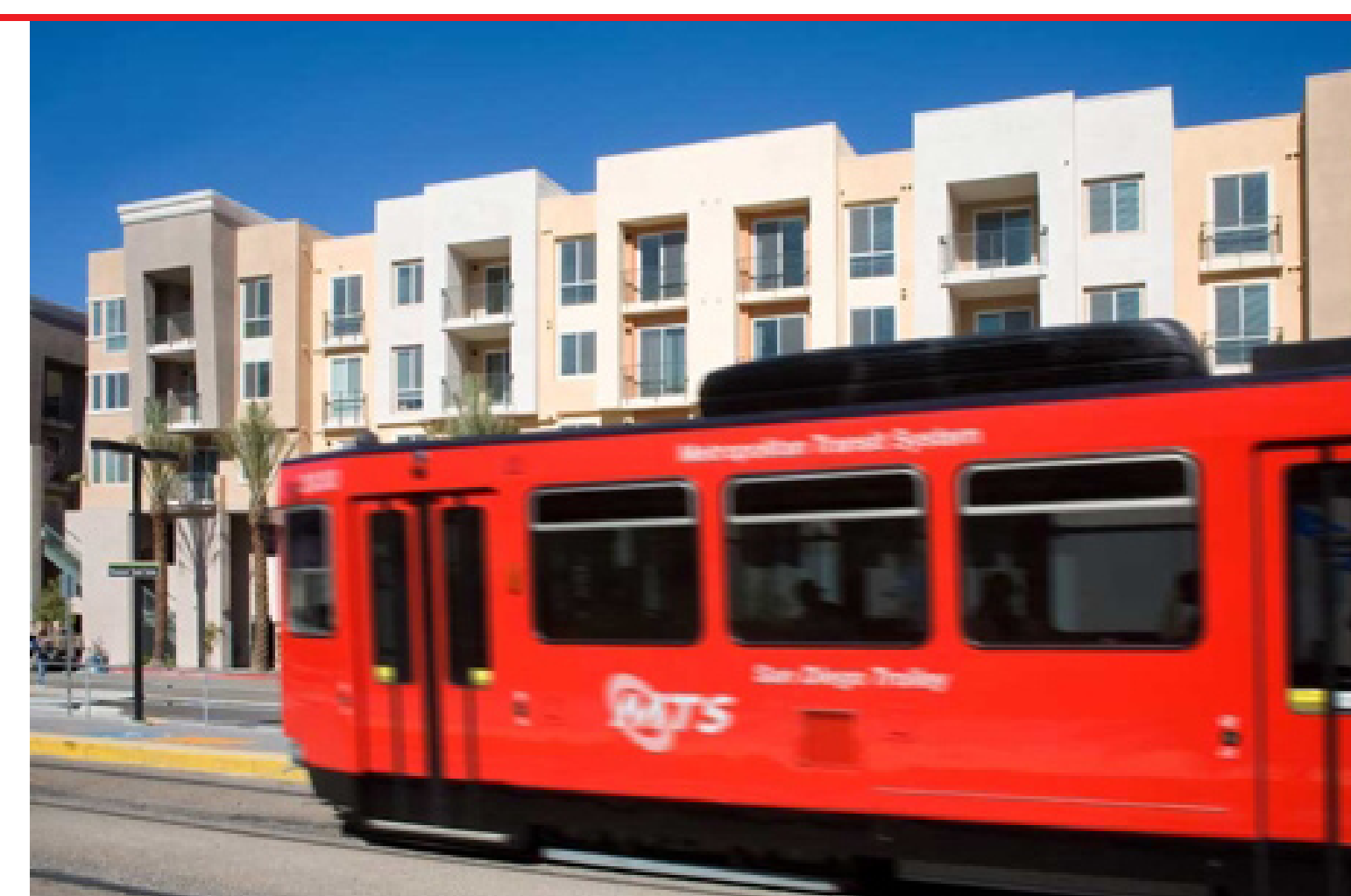
Channel Reconstruction

Recreation

Landscaping

Education & Interpretive Program

- Invest in the areas around the **Trolley and Transit** so they are well-integrated with the community (Invertir en áreas alrededor del trolley y tránsito para que estas sean bien integradas a la comunidad)



Transit-Oriented Development

Improved Tracks and Stations

Resting & Waiting Areas

Bike Racks & Facilities

Pedestrian Access

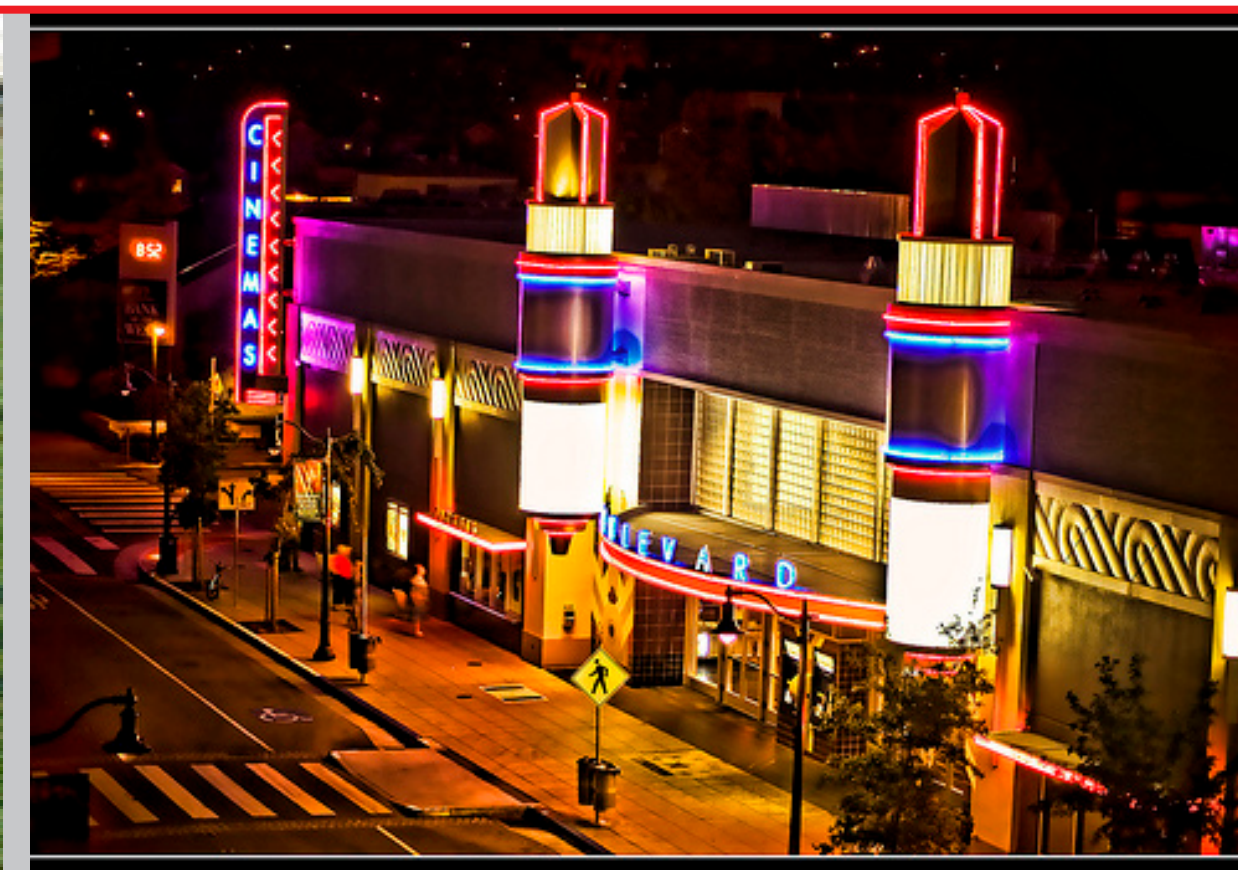
Elevated Trolley Crossing



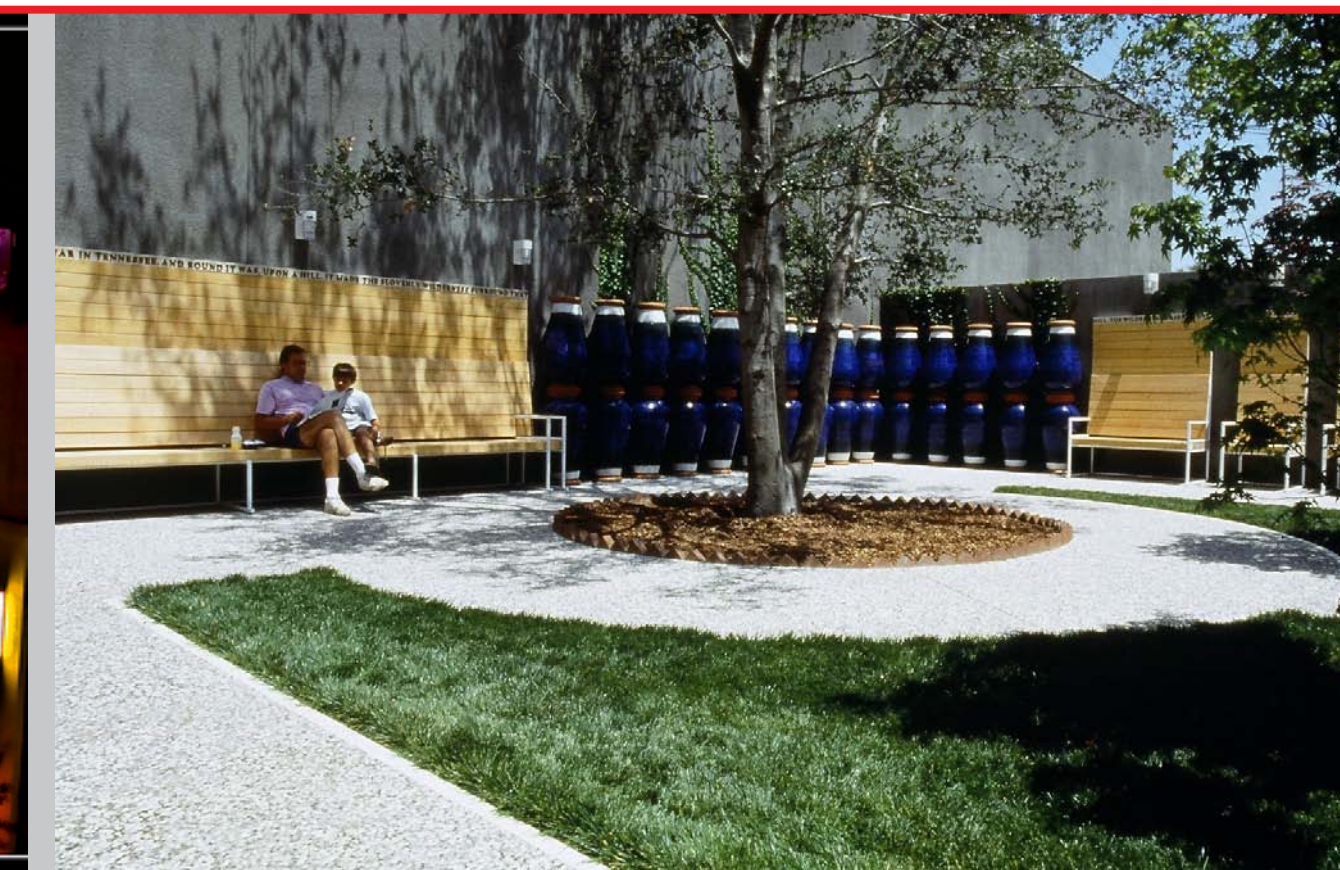
- Provide Spaces for **Recreation and Gathering** that are attractive and accessible (Proporcionar espacios comunales que son atractivos y accesibles)



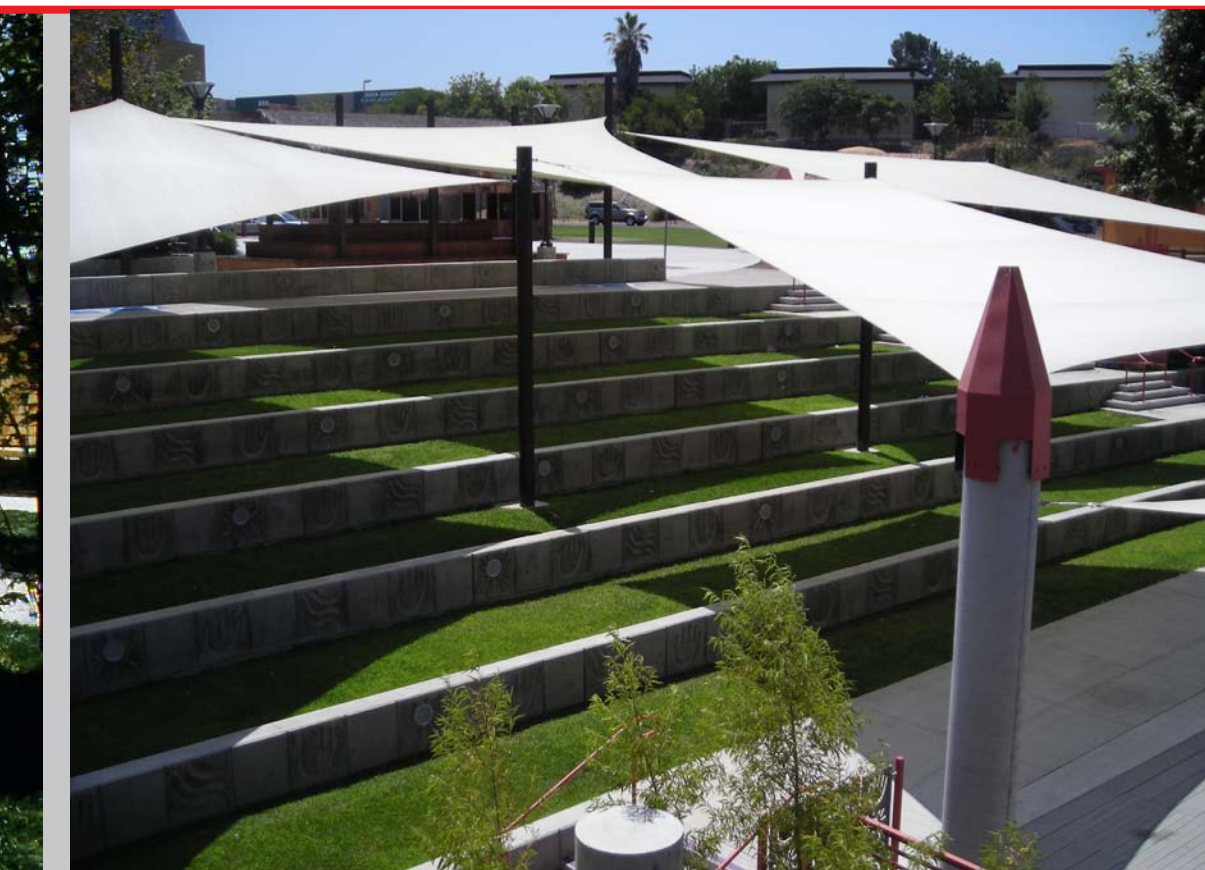
Recreation & Sports Facilities



Movie Theater



Parks and Community Gardens



Amphitheaters



Community Plaza near Trolley Station

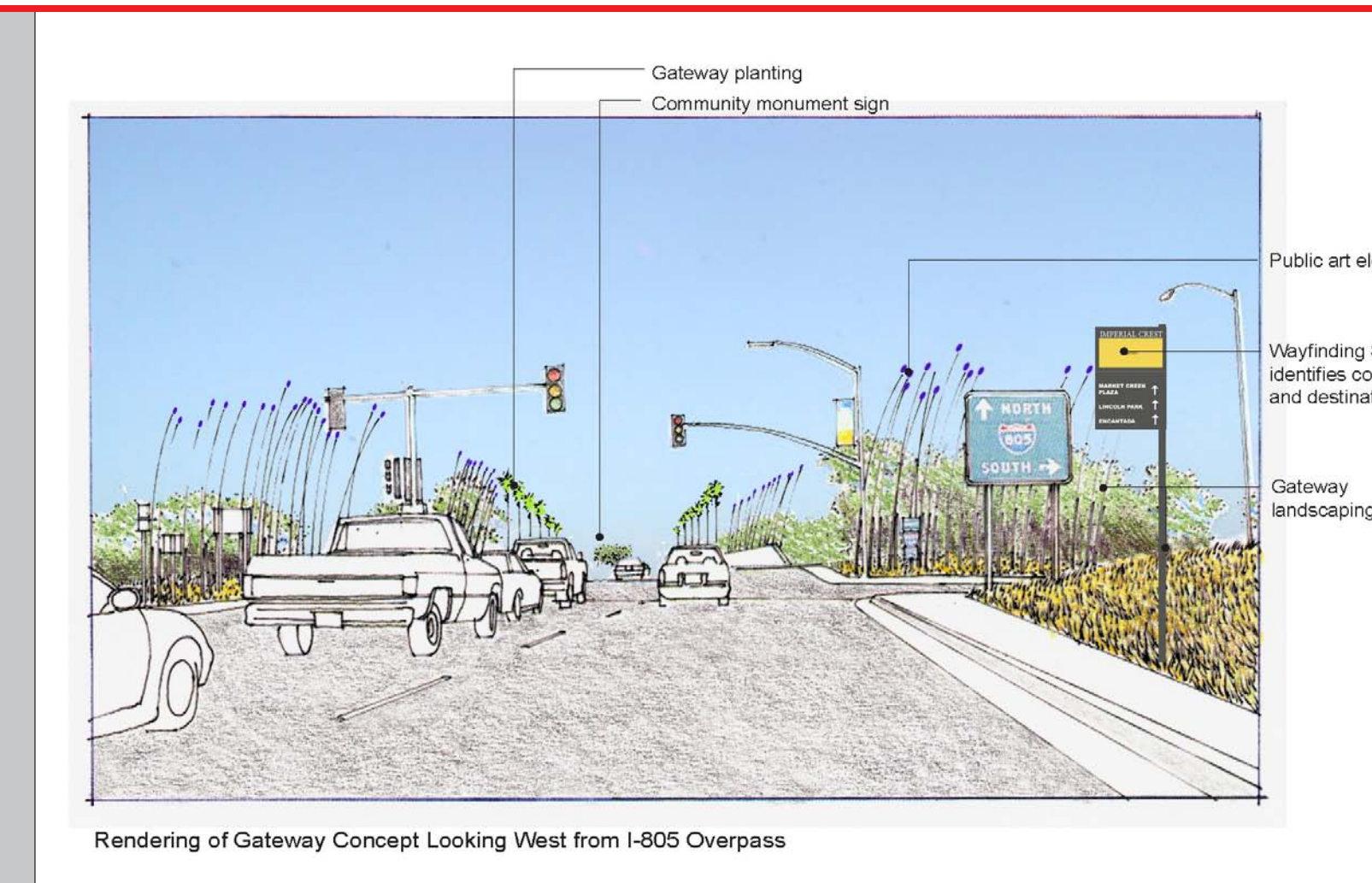
- Make **Gateways and Landmarks** prominent symbols of the community's sense of place (Hacer que las entradas y monumentos principales sean símbolos de la comunidad)



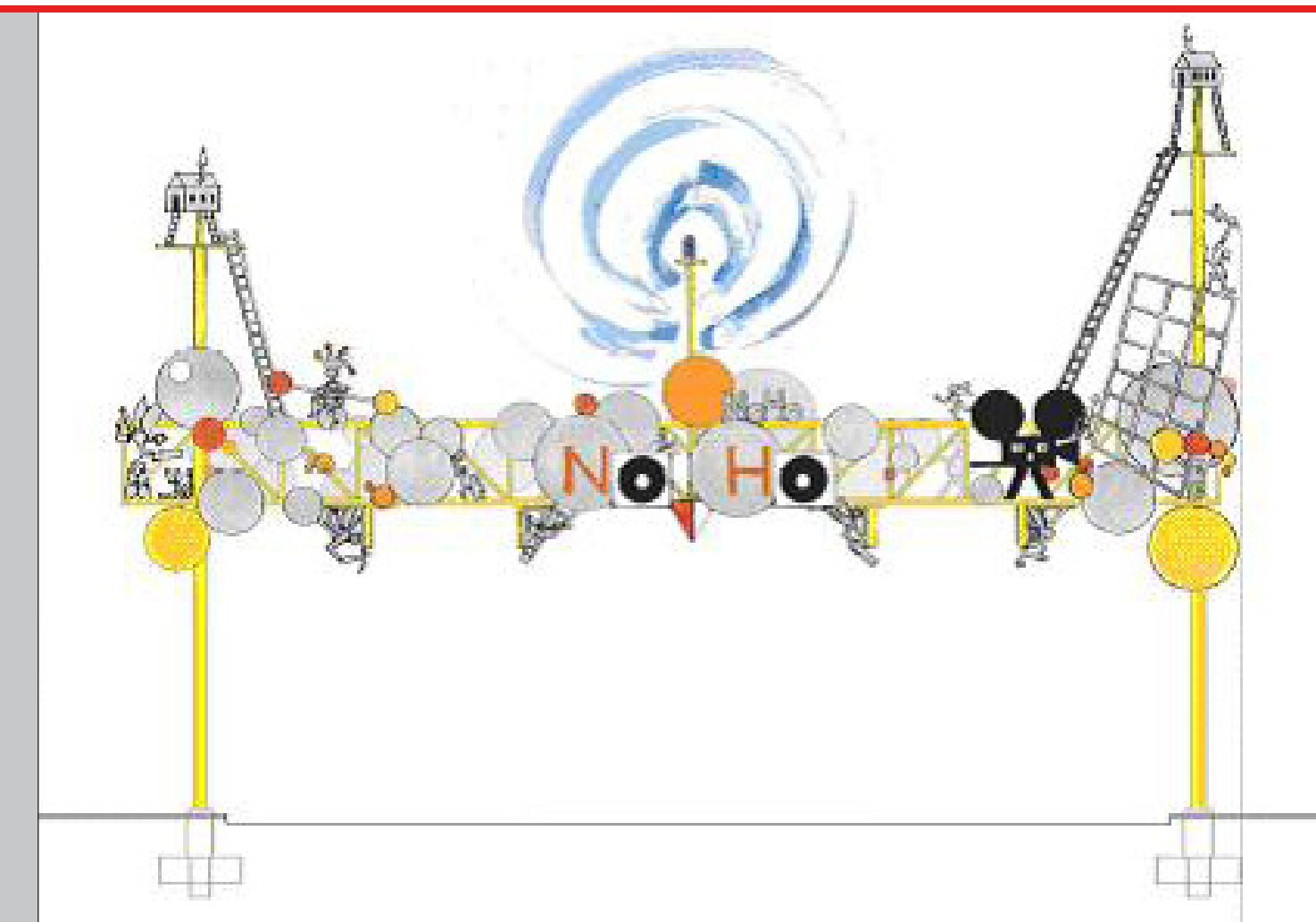
Corner Buildings



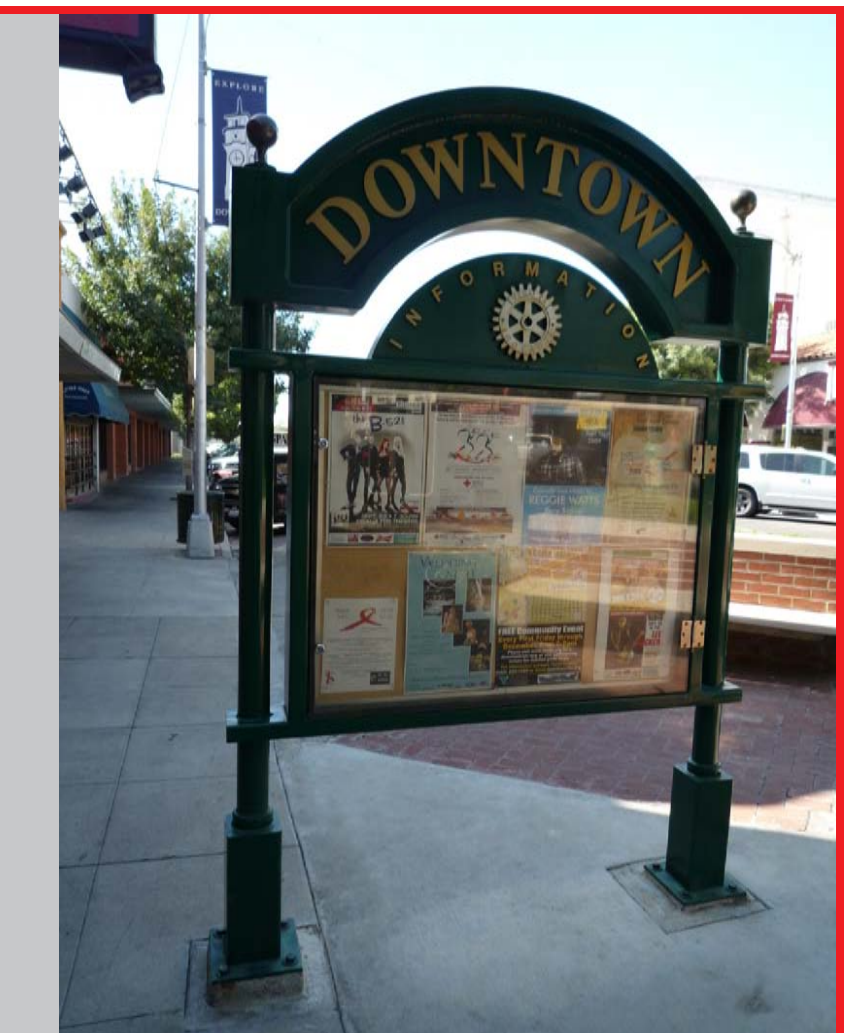
Monuments



Major Intersections



Art



Pedestrian-Oriented Signage

- Plant **Trees** and other **Landscape** elements to provide human comfort and environmental benefits (Plantar árboles y otros elementos de paisaje para proporcionar comodidad humana y beneficios ambientales)



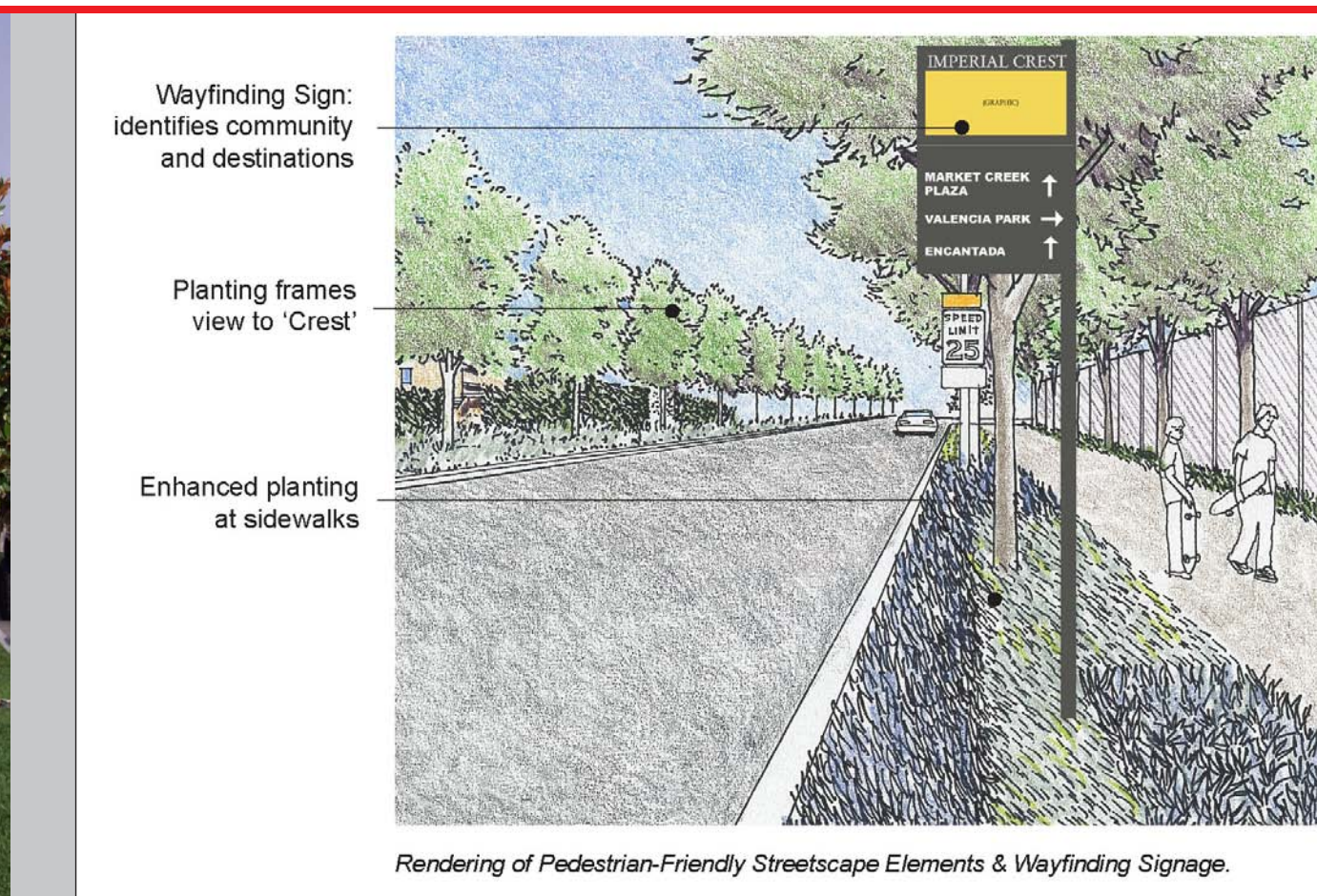
Street Trees



Swales



Planters



Gateway / Accent Trees



Buffers, Screening & Safety

- Support **Public Art** as an expression of collective community pride (Apoyar arte público como expresión del orgullo colectivo de la comunidad)



Screening



Murals



Street Furniture



Festivals



Sculpture