

Parks and Recreation Department

Balboa Park South Palisades Plaza Project

August 1, 2019



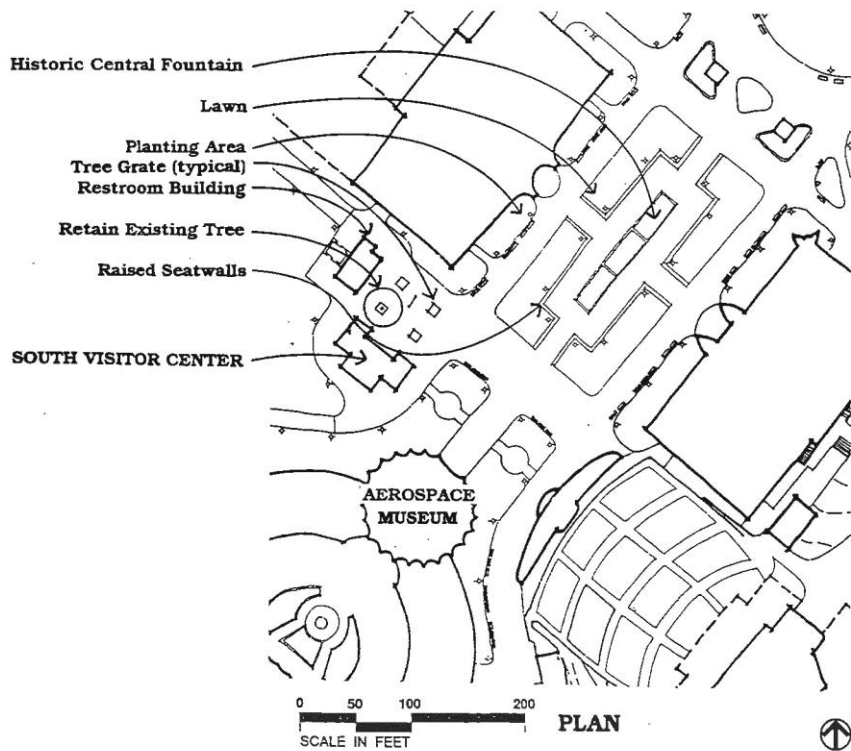


1989-1992 Precise Plan

7. Plaza de las Americas

Design Objective:

Restore the southern portion of the 1935 Plaza area of the Palisades to its original use as a pedestrian plaza. This plaza should function as a pleasant southern destination point for the Central Mesa and offer amenities that will serve the needs of a variety of user groups from nighttime playgoers to museum patrons who might spend half a day in the immediate area. It should provide pooling space for the Starlight Bowl areas for outdoor display, circulation space, food service, visitor information, public restrooms, a variety of seating, and visual interest features that will invite the Park visitor to pause, relax, and enjoy spending time outdoors.





BALBOA PARK-CENTRAL MESA PRECISE PLAN

Precise Plan - Specific Recommendations

Recommendations:

- Provide a patio area for outdoor dining adjacent to the visitor center. Retain the existing tree (*Kigelia pinnata*) and incorporate it into the design. Also allow for views into the nearby wooded canyon.
- Situate movable seating consisting of chairs, and tables with umbrellas at the concession patio and the adjoining plaza space.
- Utilize a central fountain to serve as the major focus of interest in the plaza. This fountain should recall the Firestone Singing Fountains of the 1935 Exposition which featured colored lighting and special spray effects that synchronized with prerecorded music or live performances in the Bowl.
- Provide seating around the inner portion of the plaza using raised seat walls as shown in plan. Surrounding the walls, lawn areas will slope from wall height down to plaza level.
- Provide bench seating on the outer edge of the pedestrian walkways under the shade of the trees planted near the buildings as shown on the plan.

Plaza Palm Tree: *Arecastrum romanzofianum* - Queen Palm

Building Accent Trees:

Phoenix reclinata - Senegal Date Palm

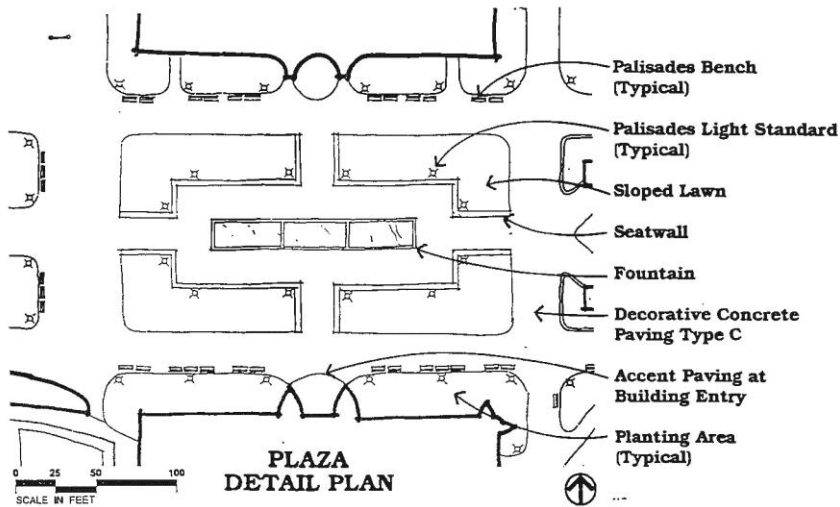
Chorisa speciosa - Floss Silk Tree

Spathodea campanulata - African Tulip Tree

Ficus microphytta - Indian Laurel Fig (Existing)

Visitor Center Patio Tree:

Podocarpus gracilior - Fern Pine

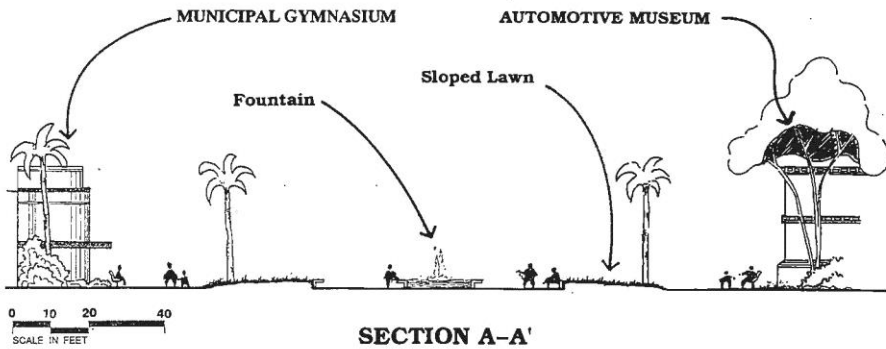
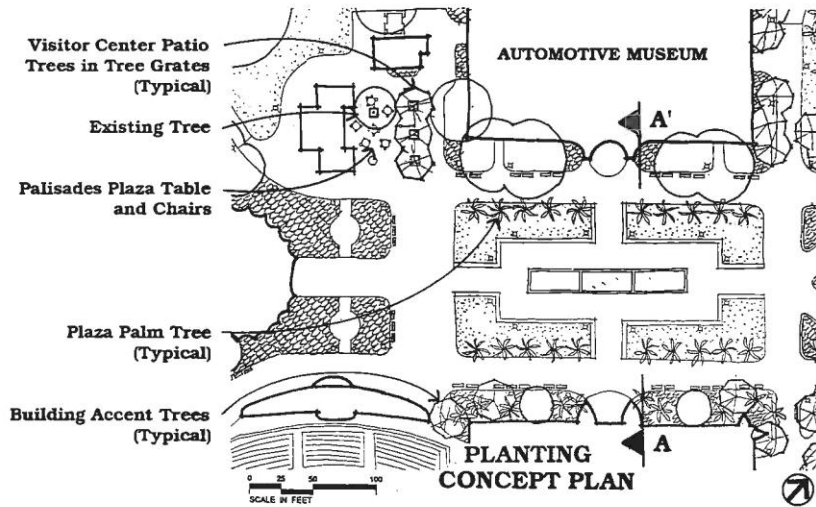


1989-1992 Precise Plan

BALBOA PARK · CENTRAL MESA PRECISE PLAN
Precise Plan - Specific Recommendations



1989-1992 Precise Plan



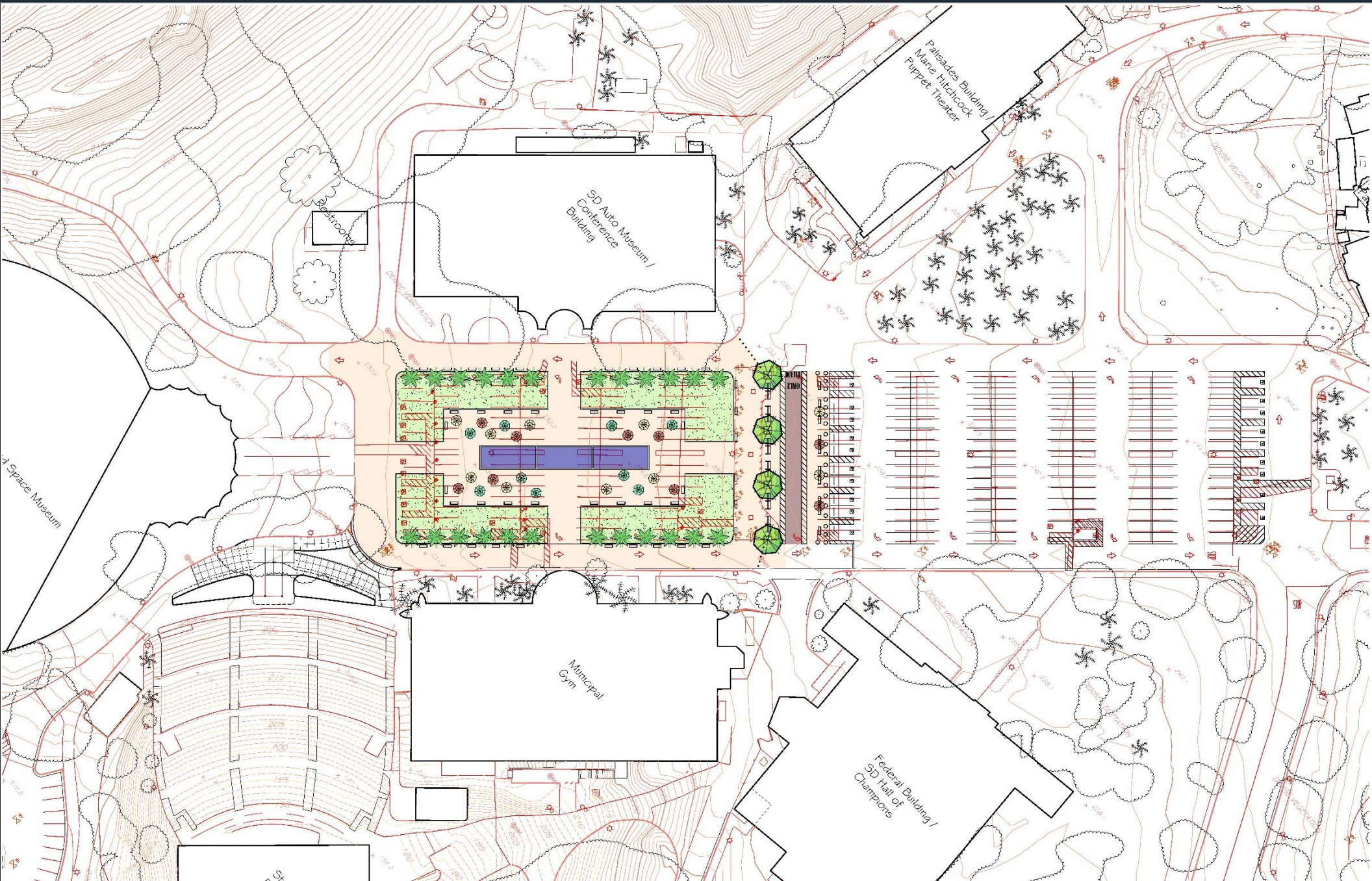


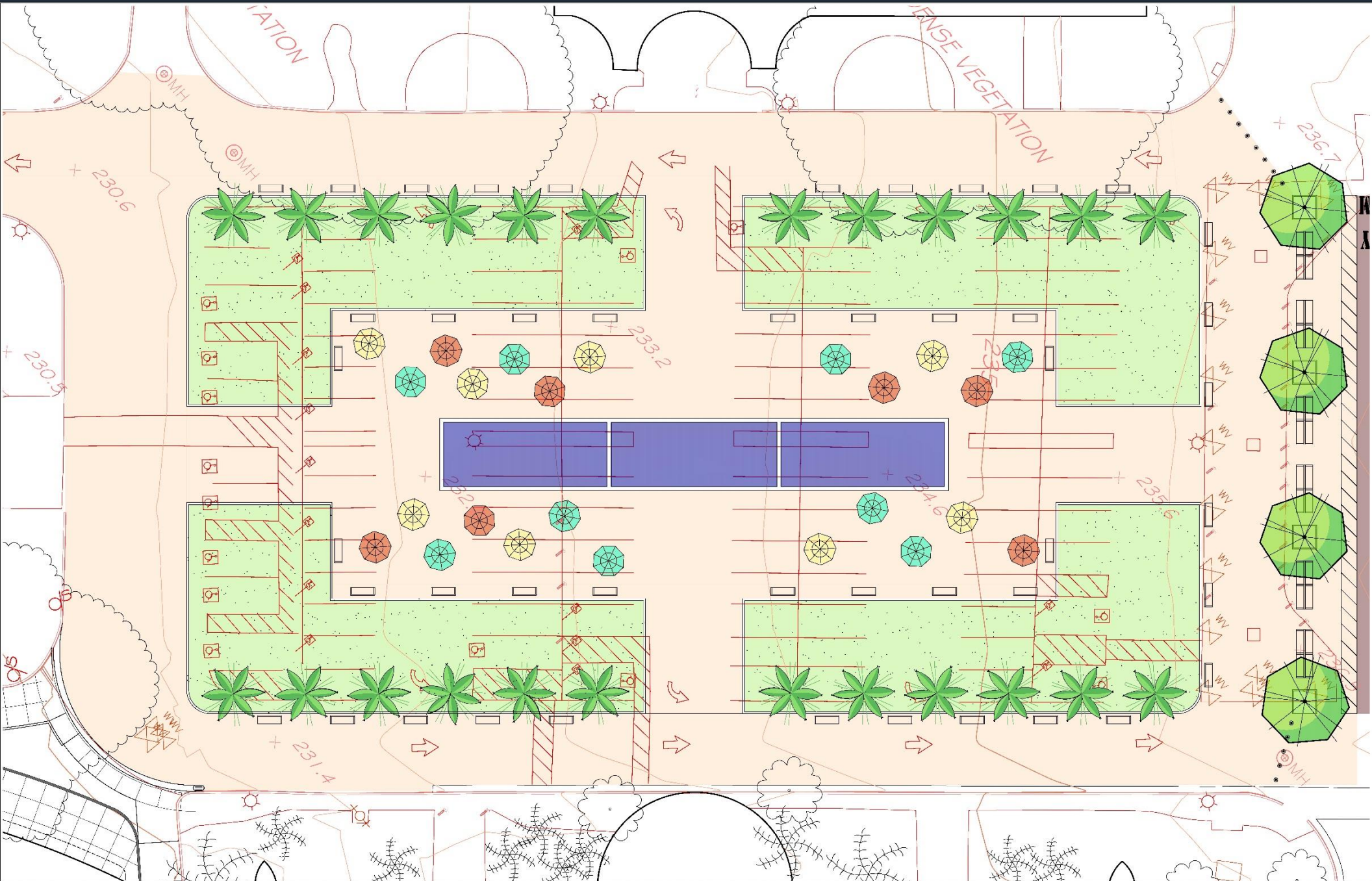
Project Goals

- Reduce/eliminate vehicle traffic and parking from the south Palisades parking lot
- Improve tram service and accessibility
- Minimize parking loss
- Reclaim parking lot for park uses per Precise Plan
- Provide a public space during park construction projects (water and sewer line replacement, California Tower seismic retrofit, Mingei Museum)

Project Overview

- Remove parking spaces and signage
- Relocate electric vehicle charging stations
- Demolish asphalt paving and replace with turf
- Re-surface the plaza similar to the Plaza de Panama
- Install curb ramps as required for accessibility
- Reconfigure the tram stop and accessible parking
- Add site furniture (benches, tables, chairs, umbrellas, trash/recycling, bike racks similar to Plaza de Panama)
- Add landscaping (trees, grass, irrigation)







Parking Modifications

Parking Lot Reconfigurations	Existing	Proposed	Change
Palisades Lot	276 spaces	132 spaces	-144 spaces
Inspiration Point South	831 spaces	915 spaces	+ 84 spaces
South Carousel Lot	200 spaces	230 spaces	+ 30 spaces
Total Spaces			- 30 spaces