

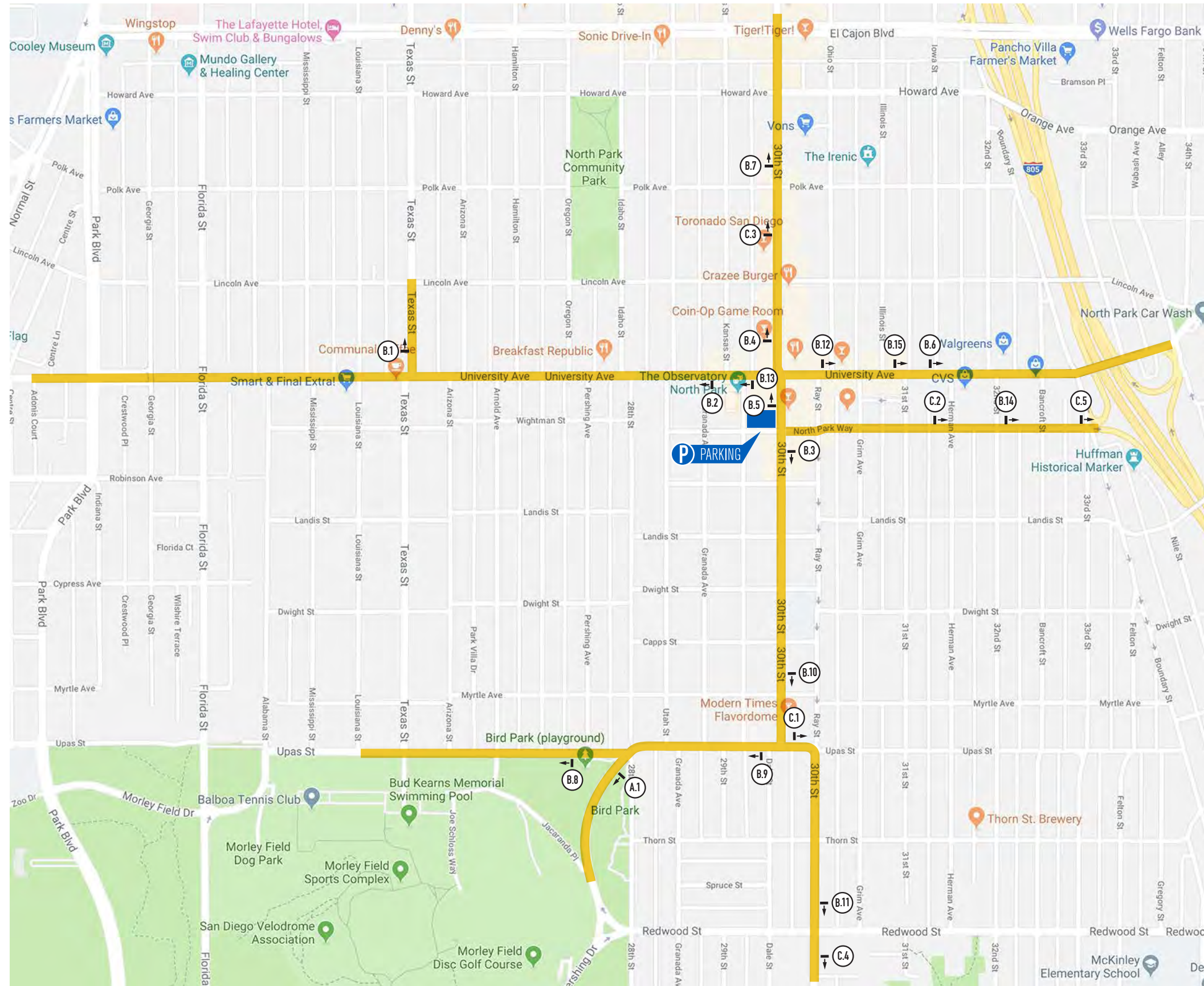
NORTH PARK
MAIN
STREET

SAN DIEGO, CALIFORNIA 92104

NORTH PARK WAYFINDING SIGNS



1160 Pioneer Way, Suite M, El Cajon, California 92020-1944
T: 619.579.2229 | F: 619.579.7651 | isasign.com | info@isasign.com



SIGN LOCATOR SITE MAP

NOT TO SCALE



NORTH PARK

Project Location:
San Diego, California 92104

Project No.: **181391-03**

Salesman: JJ

Designer: A²

Date: February 4, 2019

Scale: not to scale

Revision:
3 TA - rev signs/add QR panels 02.25.19

- △
- △
- △
- △
- △
- △
- △
- △
- △
- △
- △
- △
- △
- △
- △



Integrated SIGNS
DREAM IT • BUILD IT • SIGN IT

1160 Pioneer Way, Suite M
El Cajon, California 92020-1944
T: 619.579.2229 | F: 619.579.7651
isasign.com | info@isasign.com

ORIGINAL CONCEPT
This design is the exclusive property of Integrated Signs and cannot be reproduced in whole or part without their prior written consent.

NORTH PARK

Project Location:
San Diego, California 92104

Project No.: **181391-03**

Salesman: JJ

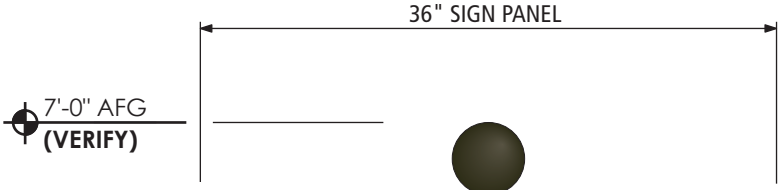
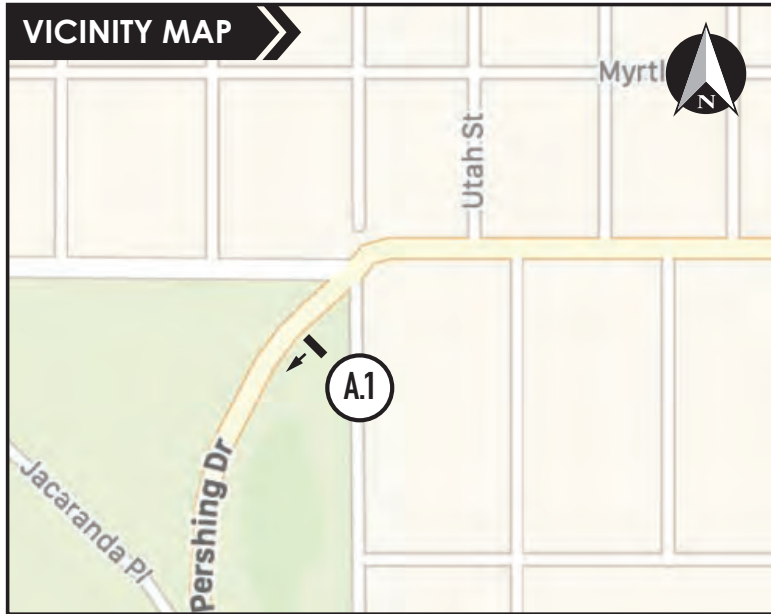
Designer: A²

Date: February 4, 2019

Scale: 1" = 1'-0"

Revision:
3 TA - rev design 02.25.19

- △
- △
- △
- △
- △
- △
- △
- △
- △
- △
- △
- △
- △
- △
- △



42" SIGN PANEL

7'-0" AFG
(VERIFY)

WELCOME TO
NORTH PARK
San Diego's Newest Cultural
and Artistic Neighborhood!
Come Join Us for...
SPECIAL EVENTS
NORTH PARK FARMER'S MARKET
FESTIVAL OF ARTS & RAY AT NIGHT
EAT | DRINK | EXPLORE

SIGN TYPE **(A)**

SEE SHT. 24 FOR
SIGN LAYOUT &
SPECIFICATIONS

S/F ENTRY SIGN
Pershing Drive

(A.1)

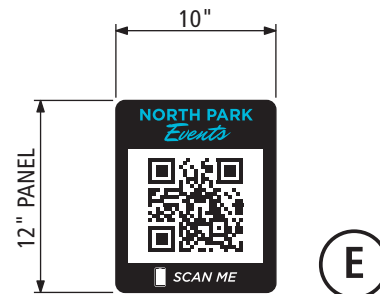
Integrated SIGNS
DREAM IT • BUILD IT • SIGN IT

1160 Pioneer Way, Suite M
El Cajon, California 92020-1944
T: 619.579.2229 | F: 619.579.7651
isasign.com | info@isasign.com

ORIGINAL CONCEPT
This design is the exclusive property
of Integrated Signs and cannot be
reproduced in whole or part
without their prior written consent.



SEE SHT. 25-26 FOR SIGN LAYOUT & SPECIFICATIONS



POST MOUNTED WAYFINDING/QR CODE SIGNS

Texas Street & University Avenue

B.1

NORTH PARK

Project Location:
San Diego, California 92104

Project No.: **181391-03**

Salesman: JJ

Designer: A²

Date: February 4, 2019

Scale: 1" = 1'-0"

Revision:

- △
- △
- △
- △
- △
- △
- △
- △
- △
- △
- △
- △
- △
- △
- △

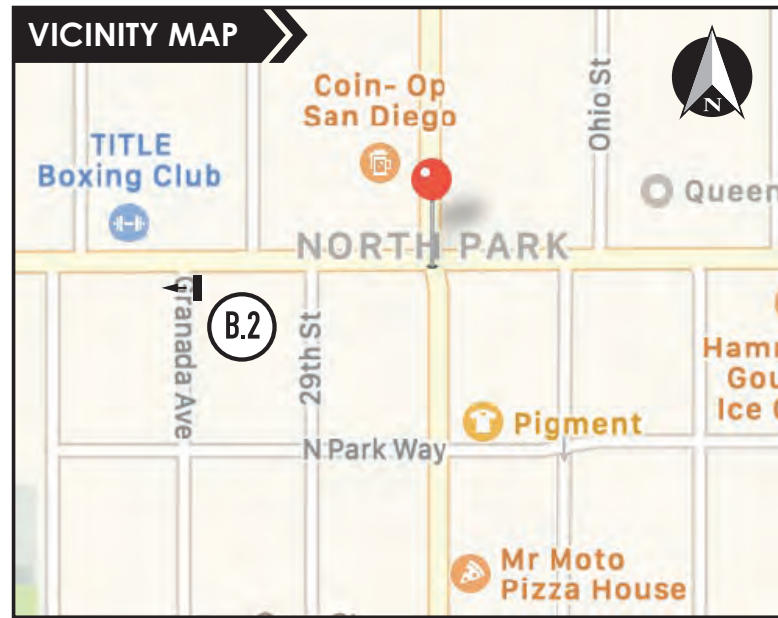


Integrated SIGNS
DREAM IT • BUILD IT • SIGN IT

1160 Pioneer Way, Suite M
El Cajon, California 92020-1944
T: 619.579.2229 | F: 619.579.7651
isasign.com | info@isasign.com

ORIGINAL CONCEPT

This design is the exclusive property of Integrated Signs and cannot be reproduced in whole or part without their prior written consent.



SEE SHT. 25-26 FOR SIGN LAYOUT & SPECIFICATIONS



POST MOUNTED WAYFINDING/QR CODE SIGNS

Granada Avenue & University Avenue

B.2

NORTH PARK

Project Location:
San Diego, California 92104

Project No.: **181391-03**

Salesman: JJ

Designer: A2

Date: February 4, 2019

Scale: 1" = 1'-0"

Revision:

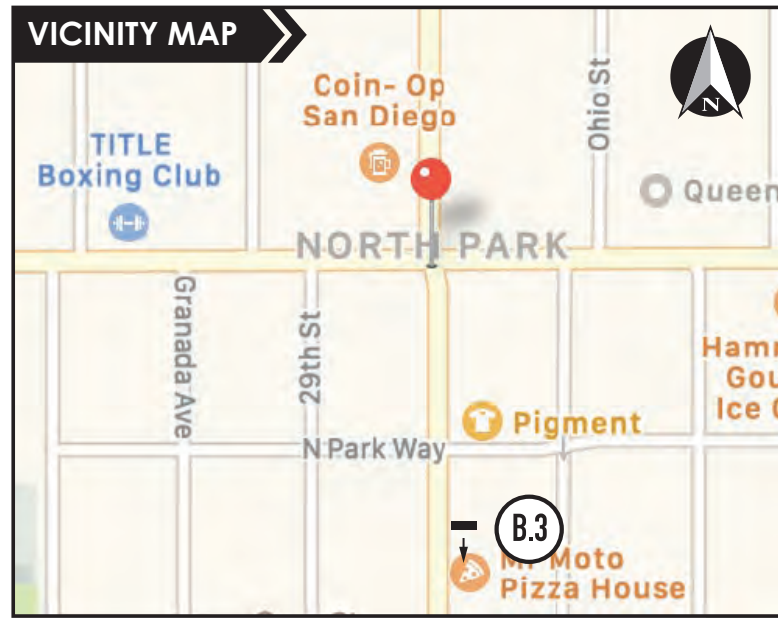
- △
- △
- △
- △
- △
- △
- △
- △
- △
- △
- △
- △
- △
- △
- △



Integrated SIGNS
DREAM IT • BUILD IT • SIGN IT

1160 Pioneer Way, Suite M
El Cajon, California 92020-1944
T: 619.579.2229 | F: 619.579.7651
isasign.com | info@isasign.com

ORIGINAL CONCEPT
This design is the exclusive property of Integrated Signs and cannot be reproduced in whole or part without their prior written consent.



SEE SHT. 25-26 FOR SIGN LAYOUT & SPECIFICATIONS



POST MOUNTED WAYFINDING/QR CODE SIGNS

30th Street & North Park Way

B.3

NORTH PARK

Project Location:
San Diego, California 92104

Project No.: **181391-03**

Salesman: JJ

Designer: A2

Date: February 4, 2019

Scale: 1" = 1'-0"

Revision:

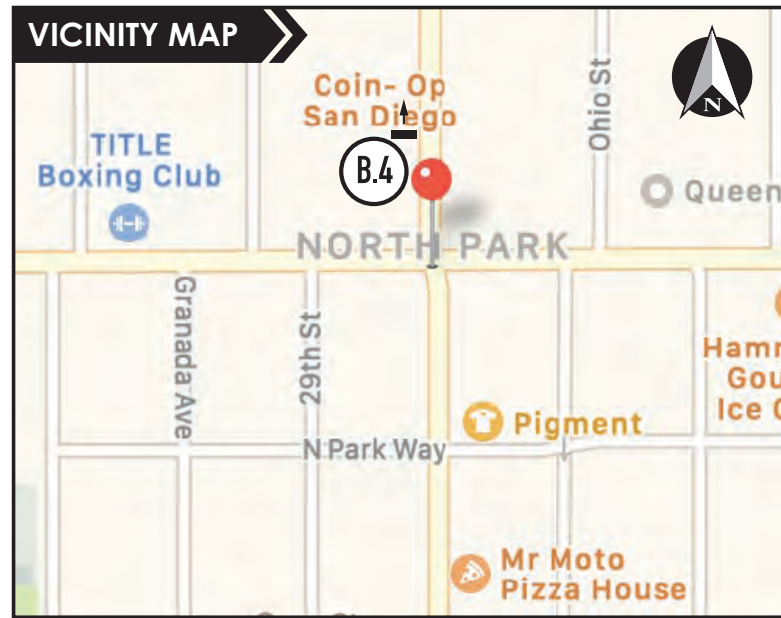
- △
- △
- △
- △
- △
- △
- △
- △
- △
- △
- △
- △
- △
- △
- △



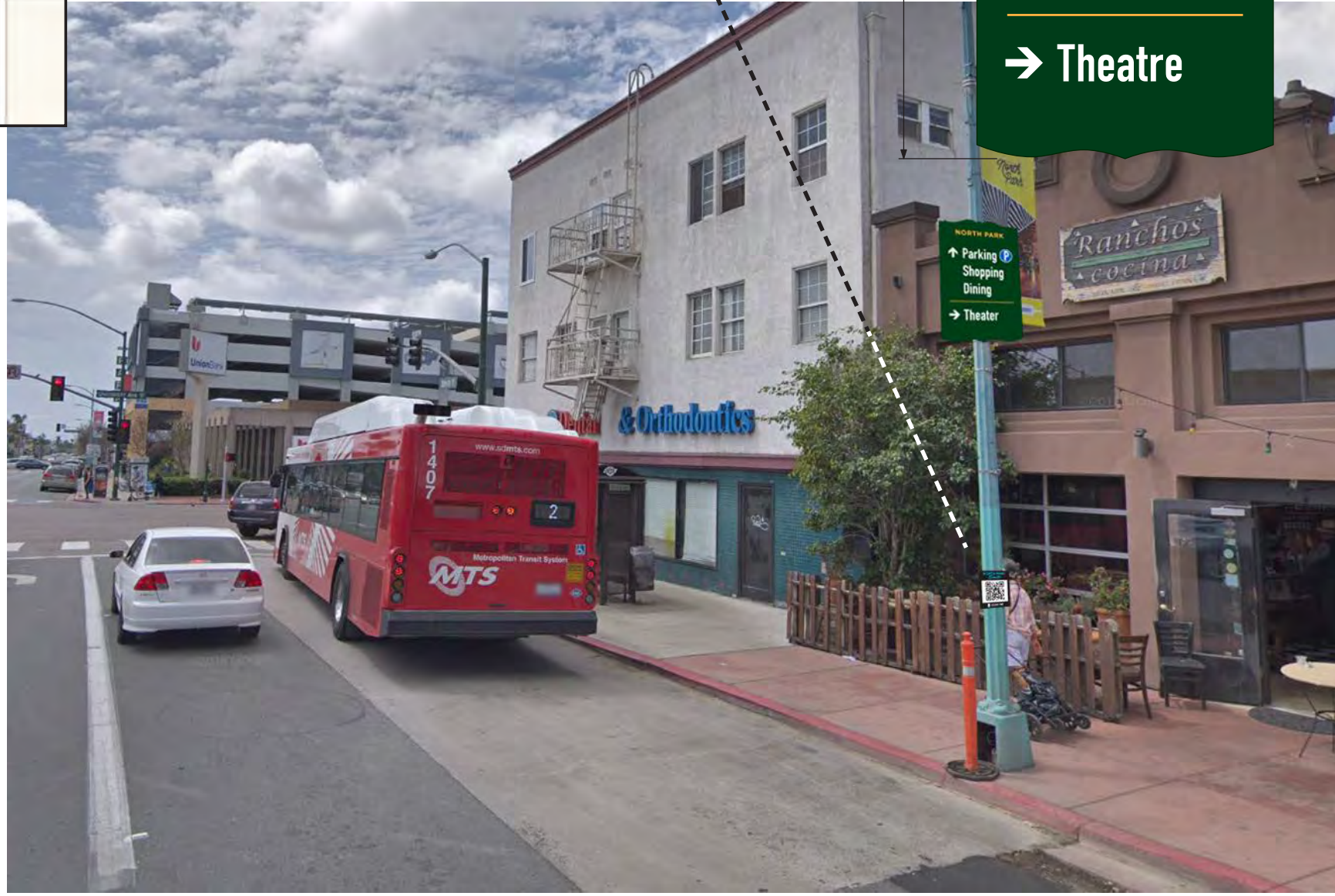
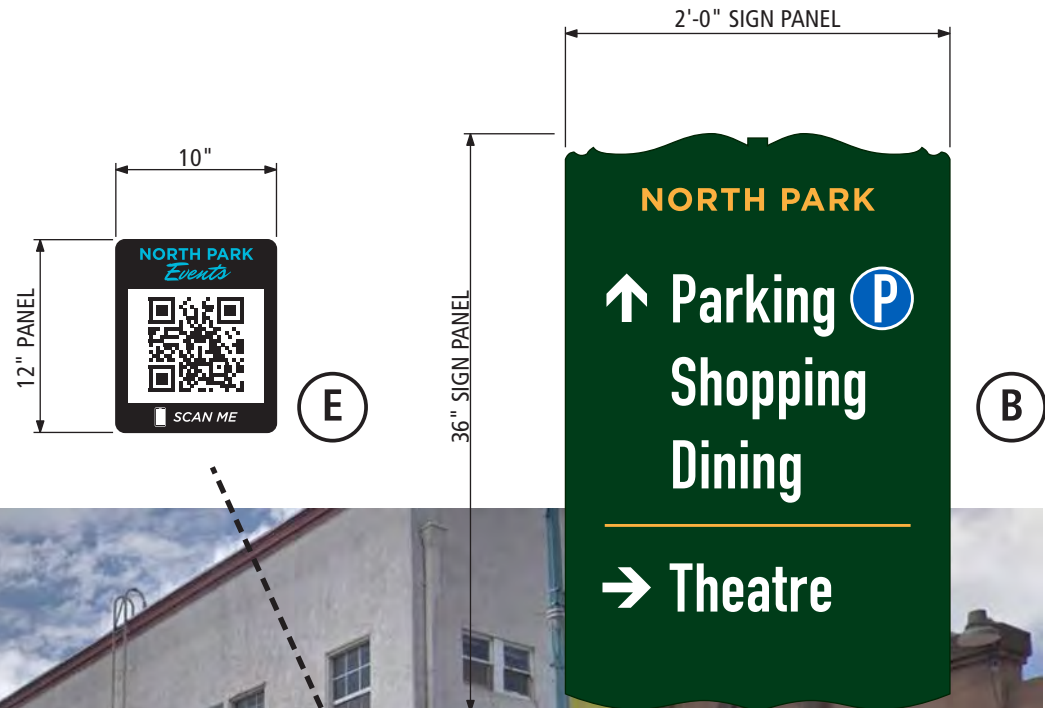
Integrated SIGNS
DREAM IT • BUILD IT • SIGN IT

1160 Pioneer Way, Suite M
El Cajon, California 92020-1944
T: 619.579.2229 | F: 619.579.7651
isasign.com | info@isasign.com

ORIGINAL CONCEPT
This design is the exclusive property of Integrated Signs and cannot be reproduced in whole or part without their prior written consent.



SEE SHT. 25-26 FOR SIGN LAYOUT & SPECIFICATIONS



POST MOUNTED WAYFINDING/QR CODE SIGNS

30th Street & University Avenue

B.4

NORTH PARK

Project Location:
San Diego, California 92104

Project No.: **181391-03**

Salesman: JJ

Designer: A2

Date: February 4, 2019

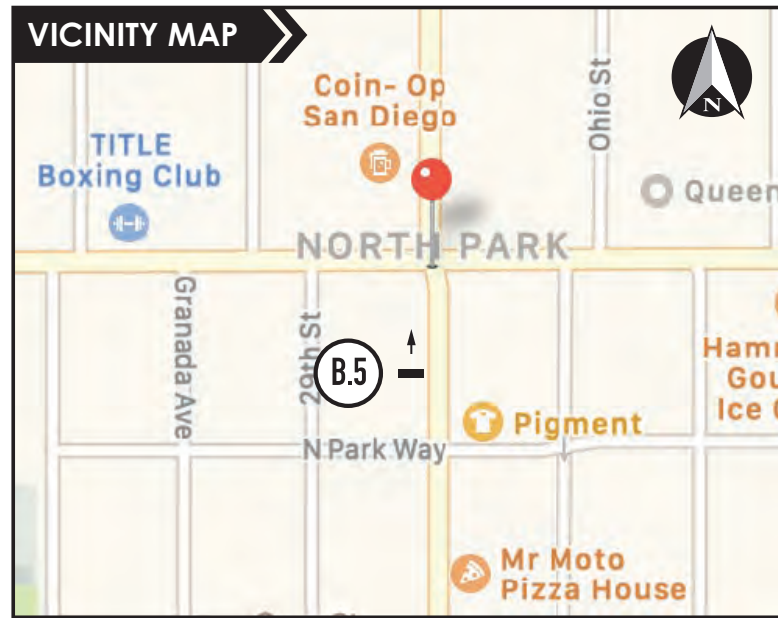
Scale: 1" = 1'-0"

- Revision:
- △
 - △
 - △
 - △
 - △
 - △
 - △
 - △
 - △
 - △
 - △
 - △
 - △
 - △
 - △
 - △
 - △

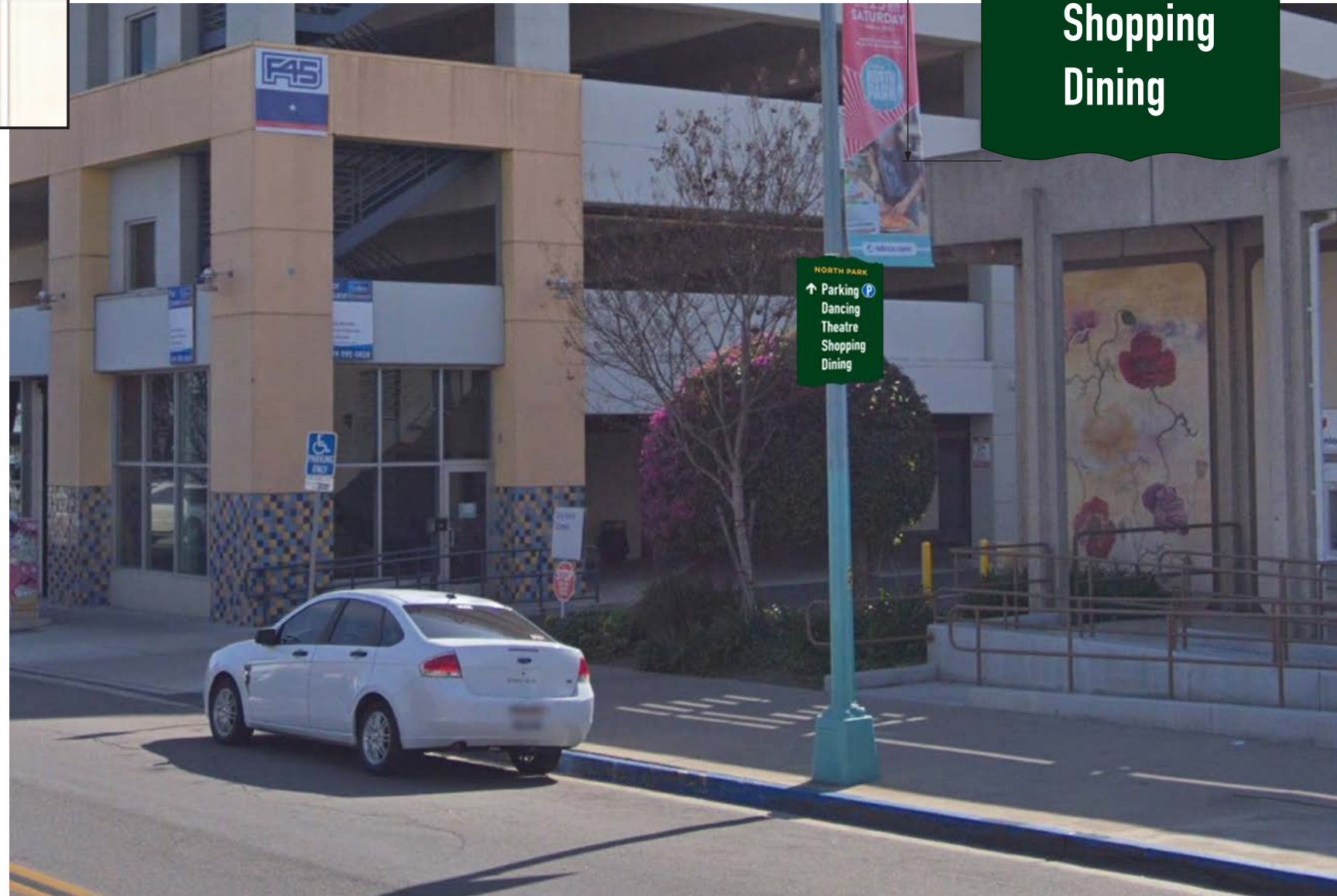


1160 Pioneer Way, Suite M
El Cajon, California 92020-1944
T: 619.579.2229 | F: 619.579.7651
isasign.com | info@isasign.com

ORIGINAL CONCEPT
This design is the exclusive property of Integrated Signs and cannot be reproduced in whole or part without their prior written consent.



B SEE SHT. 25 FOR SIGN LAYOUT & SPECIFICATIONS



POST MOUNTED WAYFINDING SIGN

30th Street & North Park Way

B.5

NORTH PARK

Project Location:
San Diego, California 92104

Project No.: **181391-03**

Salesman: JJ

Designer: A2

Date: February 4, 2019

Scale: 1" = 1'-0"

Revision:

- △
- △
- △
- △
- △
- △
- △
- △
- △
- △
- △
- △
- △
- △
- △



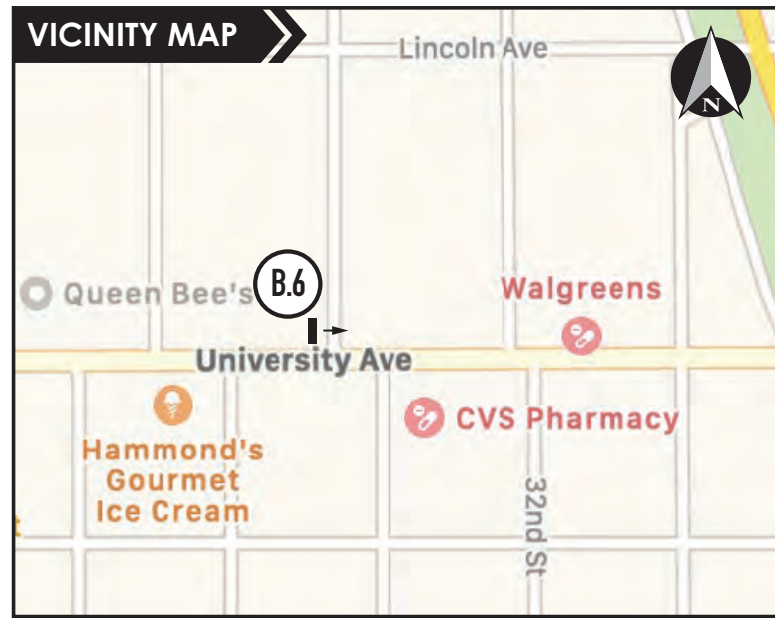
Integrated SIGNS

DREAM IT • BUILD IT • SIGN IT

1160 Pioneer Way, Suite M
El Cajon, California 92020-1944
T: 619.579.2229 | F: 619.579.7651
isasign.com | info@isasign.com

ORIGINAL CONCEPT

This design is the exclusive property of Integrated Signs and cannot be reproduced in whole or part without their prior written consent.



SEE SHT. 25-26 FOR SIGN LAYOUT & SPECIFICATIONS



POST MOUNTED WAYFINDING/QR CODE SIGNS

University Avenue & Iowa Street

B.6

NORTH PARK

Project Location:
San Diego, California 92104

Project No.: **181391-03**

Salesman: JJ

Designer: A²

Date: February 4, 2019

Scale: 1" = 1'-0"

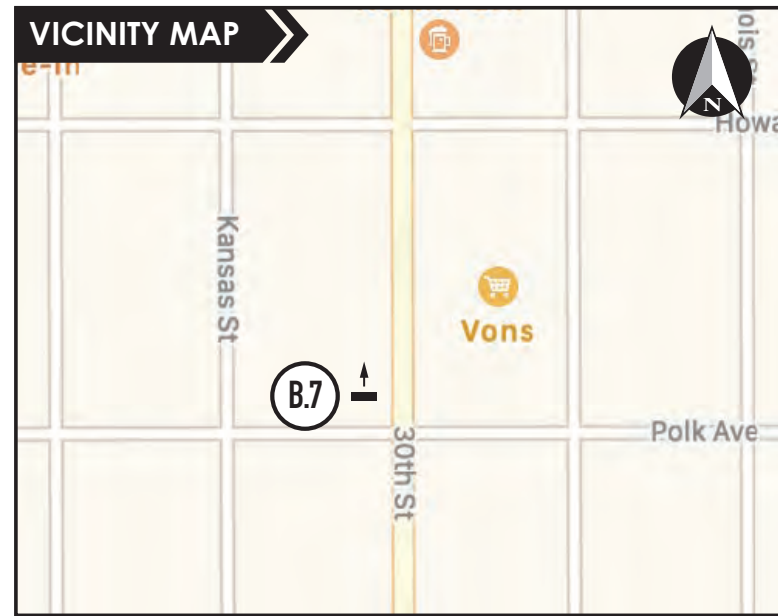
Revision:

- △
- △
- △
- △
- △
- △
- △
- △
- △
- △
- △
- △
- △
- △
- △

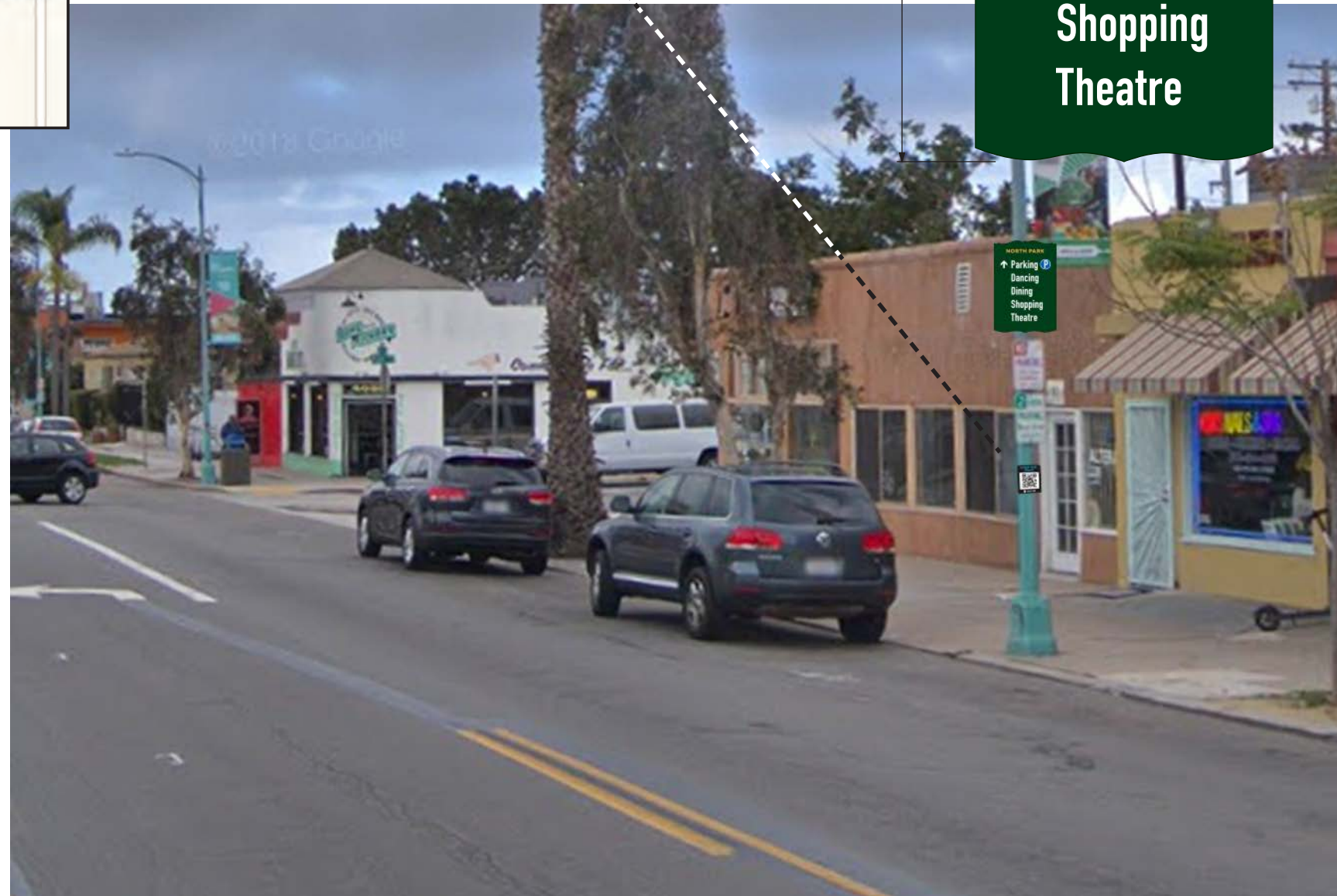


1160 Pioneer Way, Suite M
El Cajon, California 92020-1944
T: 619.579.2229 | F: 619.579.7651
isasign.com | info@isasign.com

ORIGINAL CONCEPT
This design is the exclusive property of Integrated Signs and cannot be reproduced in whole or part without their prior written consent.



SEE SHT. 25-26 FOR
SIGN LAYOUT &
SPECIFICATIONS



POST MOUNTED WAYFINDING/QR CODE SIGNS

30TH & NORTH PARK WAY

B.7

Project Location:
San Diego, California 92104

Project No.: **181391-03**

Salesman: JJ

Designer: A²

Date: February 4, 2019

Scale: 1" = 1'-0"

Revision:

- △
- △
- △
- △
- △
- △
- △
- △
- △
- △
- △
- △
- △
- △
- △



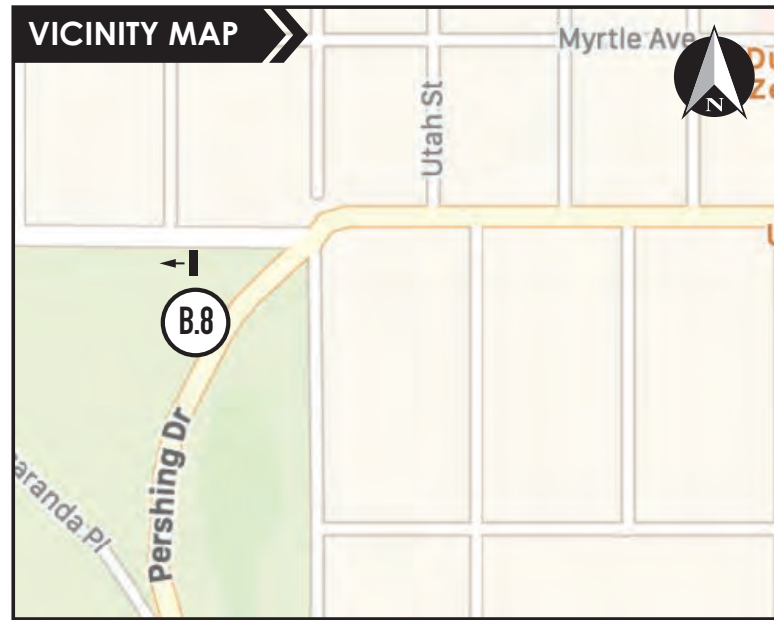
Integrated SIGNS

DREAM IT • BUILD IT • SIGN IT

1160 Pioneer Way, Suite M
El Cajon, California 92020-1944
T: 619.579.2229 | F: 619.579.7651
isasign.com | info@isasign.com

ORIGINAL CONCEPT

This design is the exclusive property of Integrated Signs and cannot be reproduced in whole or part without their prior written consent.



B SEE SHT. 25 FOR SIGN LAYOUT & SPECIFICATIONS

POST MOUNTED WAYFINDING SIGN

Upas Street & Pershing Avenue

B.8

NORTH PARK

Project Location:
San Diego, California 92104

Project No.: **181391-03**

Salesman: JJ

Designer: A²

Date: February 4, 2019

Scale: 1" = 1'-0"

Revision:

- △
- △
- △
- △
- △
- △
- △
- △
- △
- △
- △
- △
- △
- △



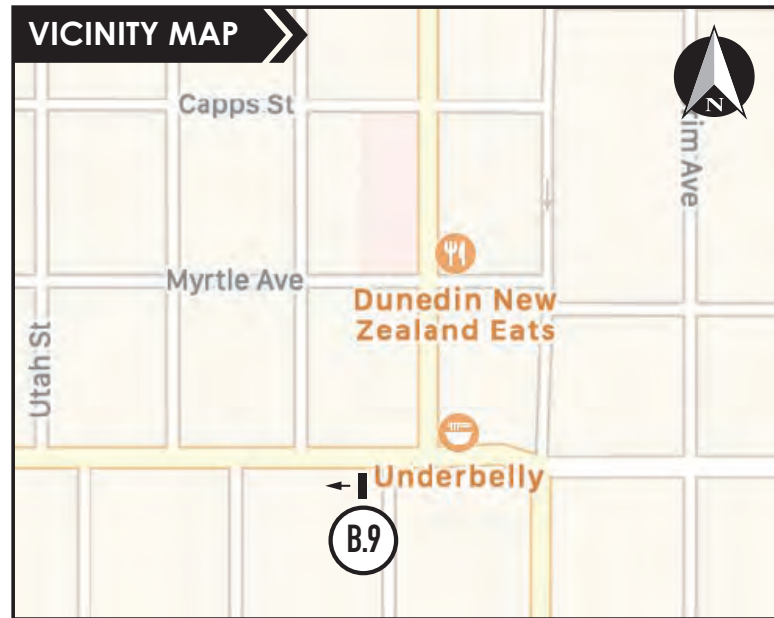
Integrated SIGNS

DREAM IT • BUILD IT • SIGN IT

1160 Pioneer Way, Suite M
El Cajon, California 92020-1944
T: 619.579.2229 | F: 619.579.7651
isasign.com | info@isasign.com

ORIGINAL CONCEPT

This design is the exclusive property of Integrated Signs and cannot be reproduced in whole or part without their prior written consent.



B SEE SHT. 25 FOR SIGN LAYOUT & SPECIFICATIONS



POST MOUNTED WAYFINDING SIGN

Upas Street & Dale Street

B.9

NORTH PARK

Project Location:
San Diego, California 92104

Project No.: **181391-03**

Salesman: JJ

Designer: A²

Date: February 4, 2019

Scale: 1" = 1'-0"

Revision:

- △
- △
- △
- △
- △
- △
- △
- △
- △
- △
- △
- △
- △
- △
- △

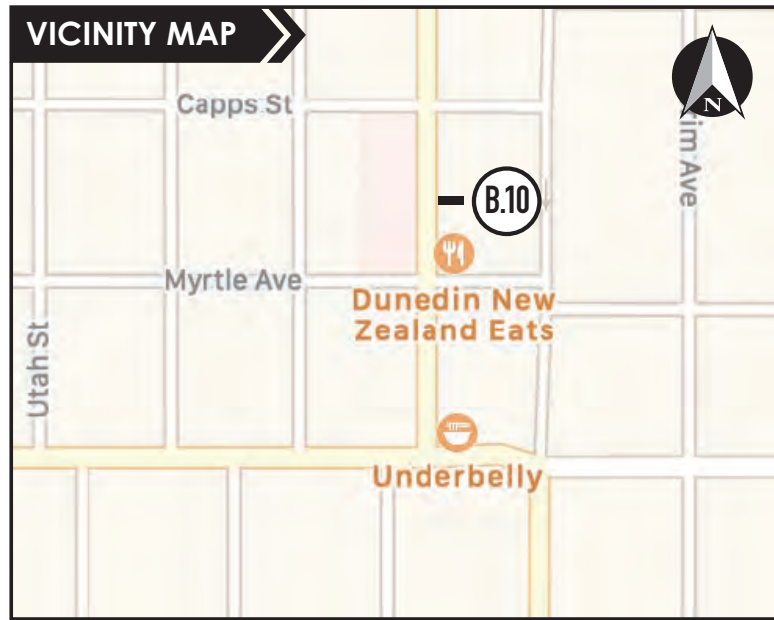


Integrated SIGNS
DREAM IT • BUILD IT • SIGN IT

1160 Pioneer Way, Suite M
El Cajon, California 92020-1944
T: 619.579.2229 | F: 619.579.7651
isesign.com | info@isesign.com

ORIGINAL CONCEPT

This design is the exclusive property of Integrated Signs and cannot be reproduced in whole or part without their prior written consent.



B SEE SHT. 25 FOR SIGN LAYOUT & SPECIFICATIONS



POST MOUNTED WAYFINDING SIGN
30th Street & Myrtle Avenue

B.10

NORTH PARK

Project Location:
San Diego, California 92104

Project No.: **181391-03**

Salesman: JJ

Designer: A²

Date: February 4, 2019

Scale: 1" = 1'-0"

Revision:

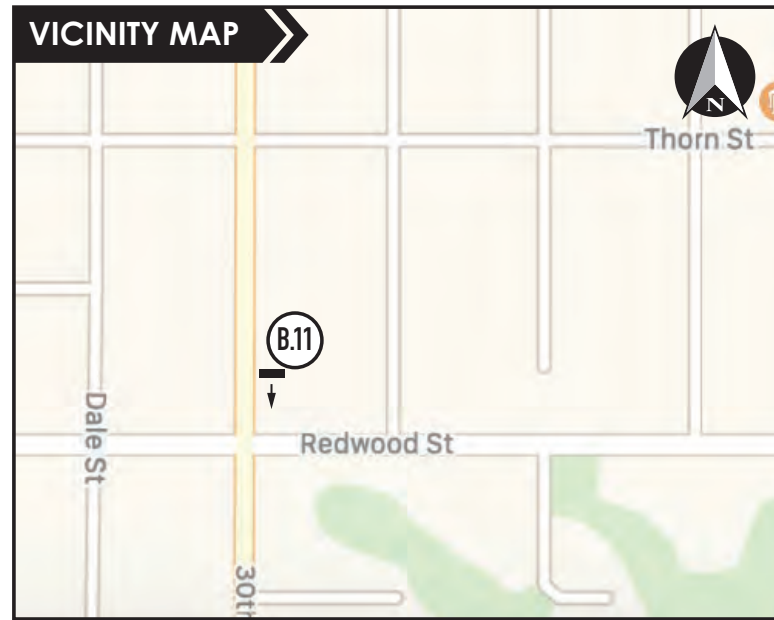
- △
- △
- △
- △
- △
- △
- △
- △
- △
- △
- △
- △
- △
- △
- △



Integrated SIGNS
DREAM IT • BUILD IT • SIGN IT

1160 Pioneer Way, Suite M
El Cajon, California 92020-1944
T: 619.579.2229 | F: 619.579.7651
isasign.com | info@isasign.com

ORIGINAL CONCEPT
This design is the exclusive property of Integrated Signs and cannot be reproduced in whole or part without their prior written consent.



B SEE SHT. 25 FOR SIGN LAYOUT & SPECIFICATIONS



POST MOUNTED WAYFINDING SIGN

30th Street & Redwood Street

B.11

NORTH PARK

Project Location:
San Diego, California 92104

Project No.: **181391-03**

Salesman: JJ

Designer: A²

Date: February 4, 2019

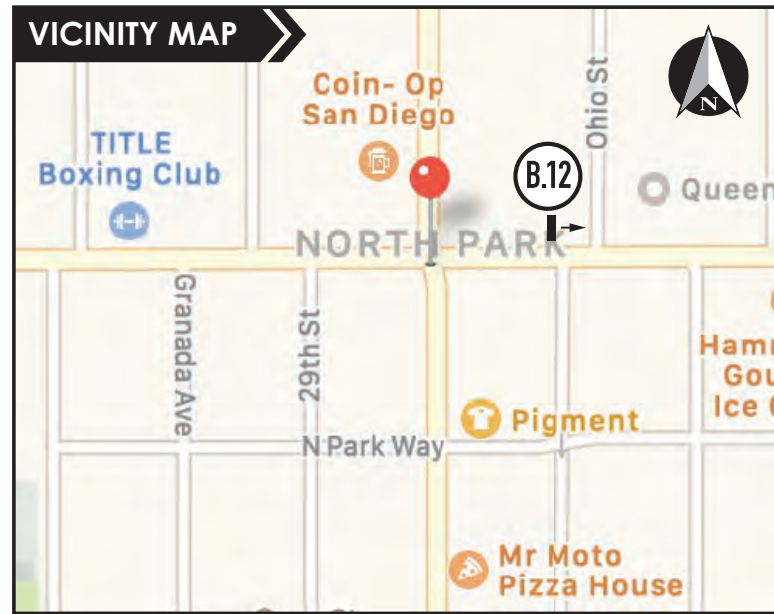
Scale: 1" = 1'-0"

- Revision:
- △
 - △
 - △
 - △
 - △
 - △
 - △
 - △
 - △
 - △
 - △
 - △
 - △
 - △
 - △
 - △
 - △

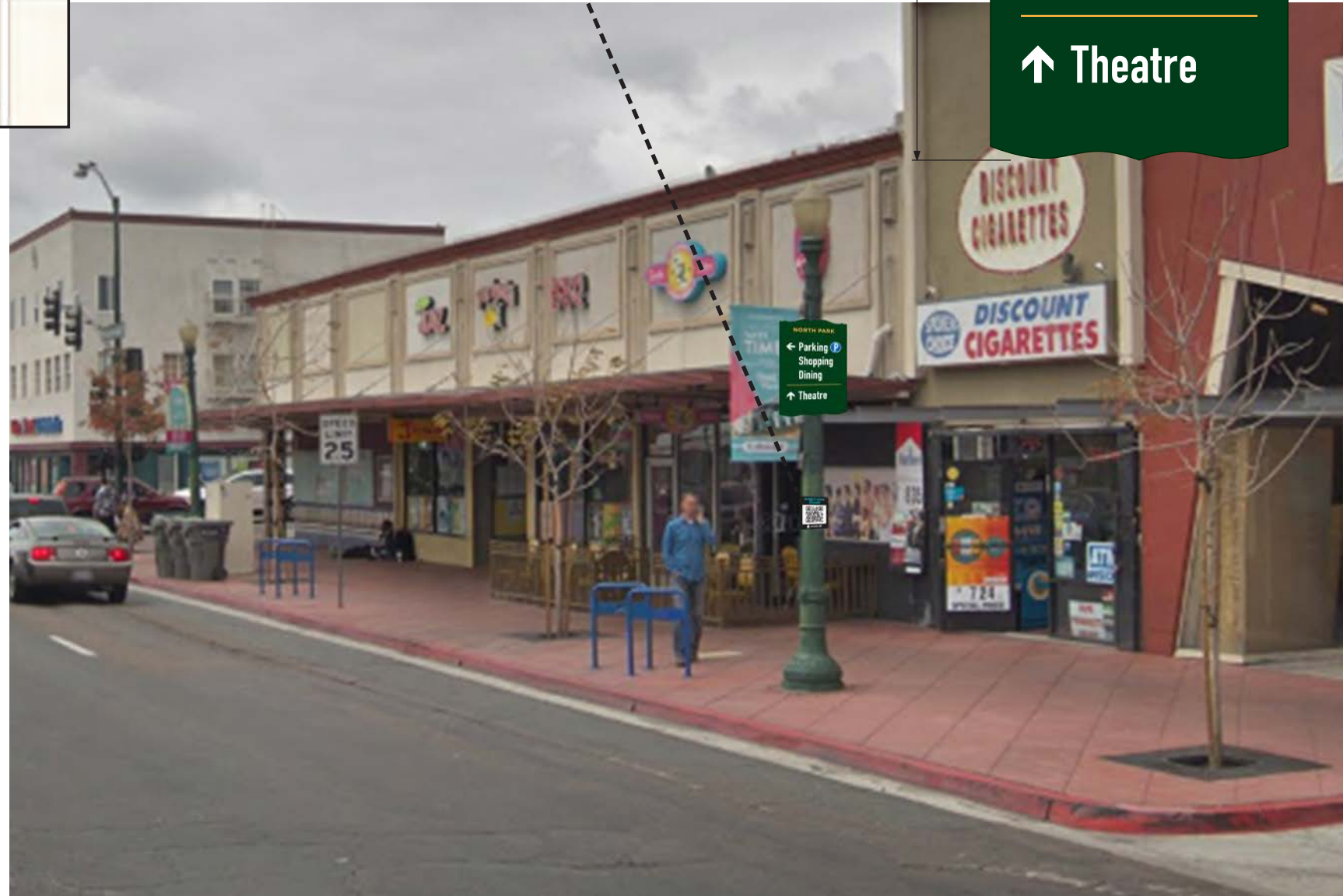
Integrated SIGNS
DREAM IT • BUILD IT • SIGN IT

1160 Pioneer Way, Suite M
El Cajon, California 92020-1944
T: 619.579.2229 | F: 619.579.7651
isasign.com | info@isasign.com

ORIGINAL CONCEPT
This design is the exclusive property of Integrated Signs and cannot be reproduced in whole or part without their prior written consent.



SEE SHT. 25-26 FOR SIGN LAYOUT & SPECIFICATIONS



POST MOUNTED WAYFINDING SIGN/QR CODE SIGNS

University Avenue & Ohio Street

B.12

NORTH PARK

Project Location:
San Diego, California 92104

Project No.: **181391-03**

Salesman: JJ

Designer: A²

Date: February 4, 2019

Scale: 1" = 1'-0"

Revision:

- △
- △
- △
- △
- △
- △
- △
- △
- △
- △
- △
- △
- △
- △
- △

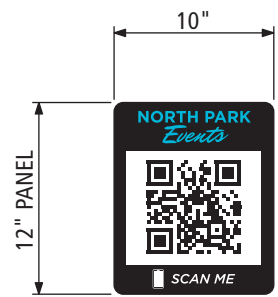
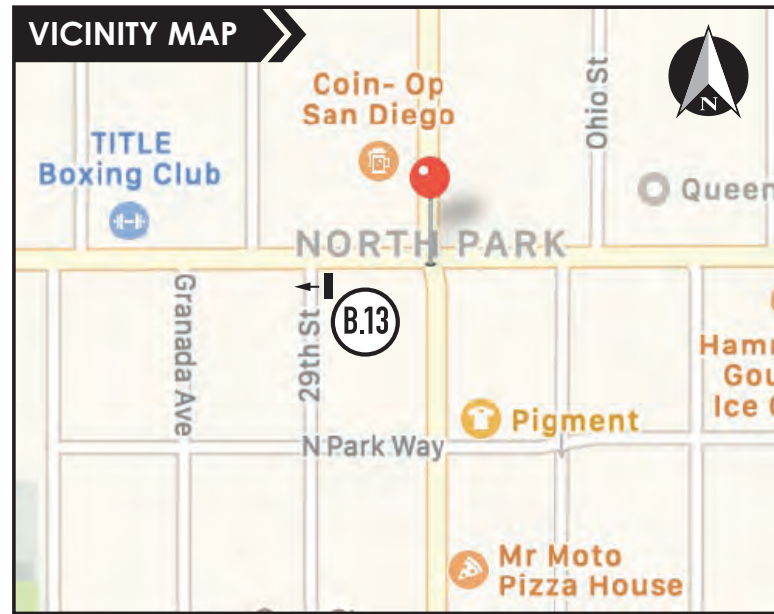


Integrated SIGNS
DREAM IT • BUILD IT • SIGN IT

1160 Pioneer Way, Suite M
El Cajon, California 92020-1944
T: 619.579.2229 | F: 619.579.7651
isasign.com | info@isasign.com

ORIGINAL CONCEPT

This design is the exclusive property of Integrated Signs and cannot be reproduced in whole or part without their prior written consent.



E

SEE SHT. 25-26 FOR SIGN LAYOUT & SPECIFICATIONS



B



POST MOUNTED WAYFINDING SIGN/QR CODE SIGNS

University Avenue & 29th Street

B.13

NORTH PARK

Project Location:
San Diego, California 92104

Project No.: **181391-03**

Salesman: JJ

Designer: A2

Date: February 4, 2019

Scale: 1" = 1'-0"

Revision:

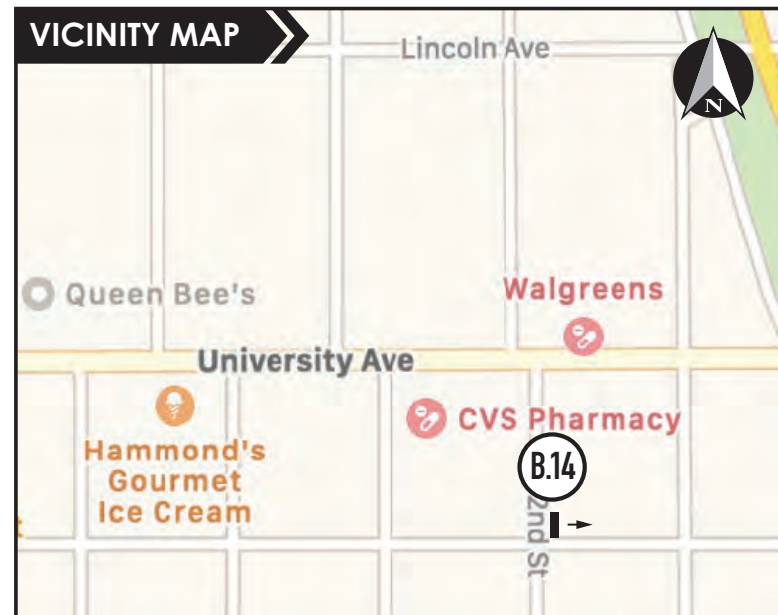
- △
- △
- △
- △
- △
- △
- △
- △
- △
- △
- △
- △
- △
- △
- △
- △
- △
- △



Integrated SIGNS
DREAM IT • BUILD IT • SIGN IT

1160 Pioneer Way, Suite M
El Cajon, California 92020-1944
T: 619.579.2229 | F: 619.579.7651
isasign.com | info@isasign.com

ORIGINAL CONCEPT
This design is the exclusive property of Integrated Signs and cannot be reproduced in whole or part without their prior written consent.



B SEE SHT. 25 FOR SIGN LAYOUT & SPECIFICATIONS



POST MOUNTED WAYFINDING SIGN

North Park Way & 32nd Street

B.14

NORTH PARK

Project Location:
San Diego, California 92104

Project No.: **181391-03**

Salesman: JJ

Designer: A2

Date: February 4, 2019

Scale: 1" = 1'-0"

Revision:

- △
- △
- △
- △
- △
- △
- △
- △
- △
- △
- △
- △
- △
- △



Integrated SIGNS

DREAM IT • BUILD IT • SIGN IT

1160 Pioneer Way, Suite M
El Cajon, California 92020-1944
T: 619.579.2229 | F: 619.579.7651
isasign.com | info@isasign.com

ORIGINAL CONCEPT

This design is the exclusive property of Integrated Signs and cannot be reproduced in whole or part without their prior written consent.



B SEE SHT. 25 FOR SIGN LAYOUT & SPECIFICATIONS



POST MOUNTED WAYFINDING SIGN
University and 31st Street

B.15

NORTH PARK

Project Location:
San Diego, California 92104

Project No.: **181391-03**

Salesman: JJ

Designer: A2

Date: February 4, 2019

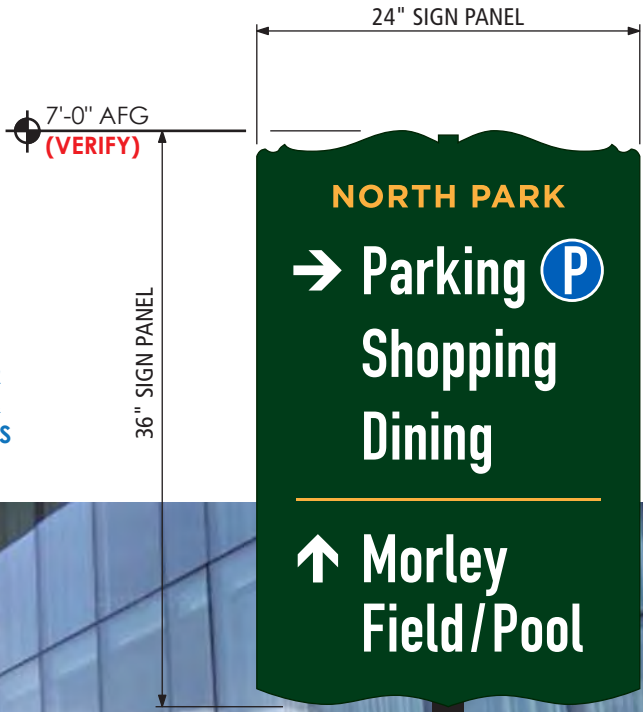
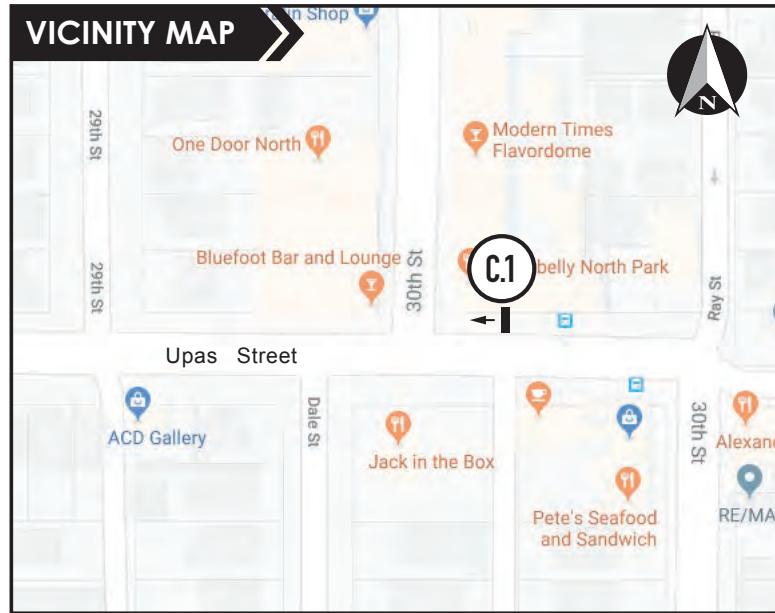
Scale: 1" = 1'-0"

- Revision:
- △
 - △
 - △
 - △
 - △
 - △
 - △
 - △
 - △
 - △
 - △
 - △
 - △
 - △



1160 Pioneer Way, Suite M
El Cajon, California 92020-1944
T: 619.579.2229 | F: 619.579.7651
isasign.com | info@isasign.com

ORIGINAL CONCEPT
This design is the exclusive property of Integrated Signs and cannot be reproduced in whole or part without their prior written consent.



C SEE SHT. 25 FOR SIGN LAYOUT & SPECIFICATIONS

POST MOUNTED DIRECTIONAL SIGN PANEL
Upas Street and 30th Street

C.1

NORTH PARK

Project Location:
San Diego, California 92104

Project No.: **181391-03**

Salesman: JJ

Designer: A2

Date: February 4, 2019

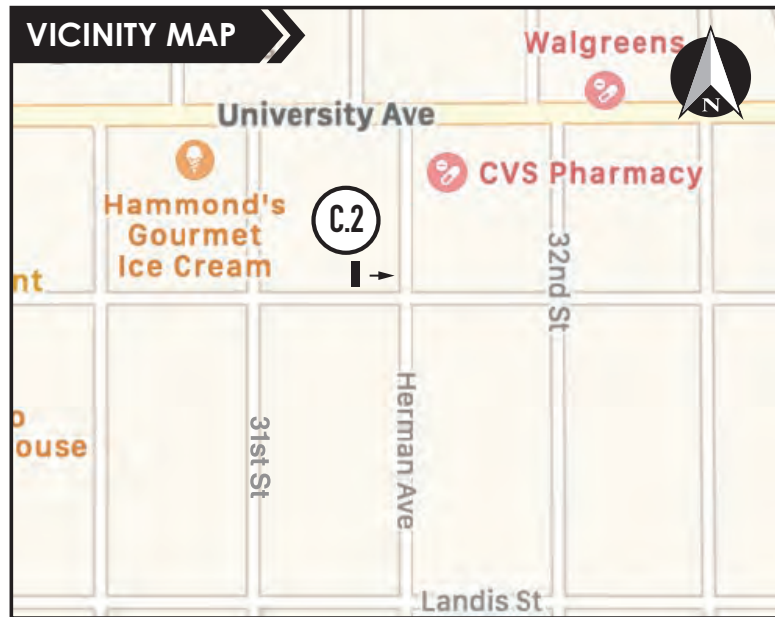
Scale: 1" = 1'-0"

- Revision:
- △
 - △
 - △
 - △
 - △
 - △
 - △
 - △
 - △
 - △
 - △
 - △
 - △
 - △
 - △
 - △
 - △
 - △

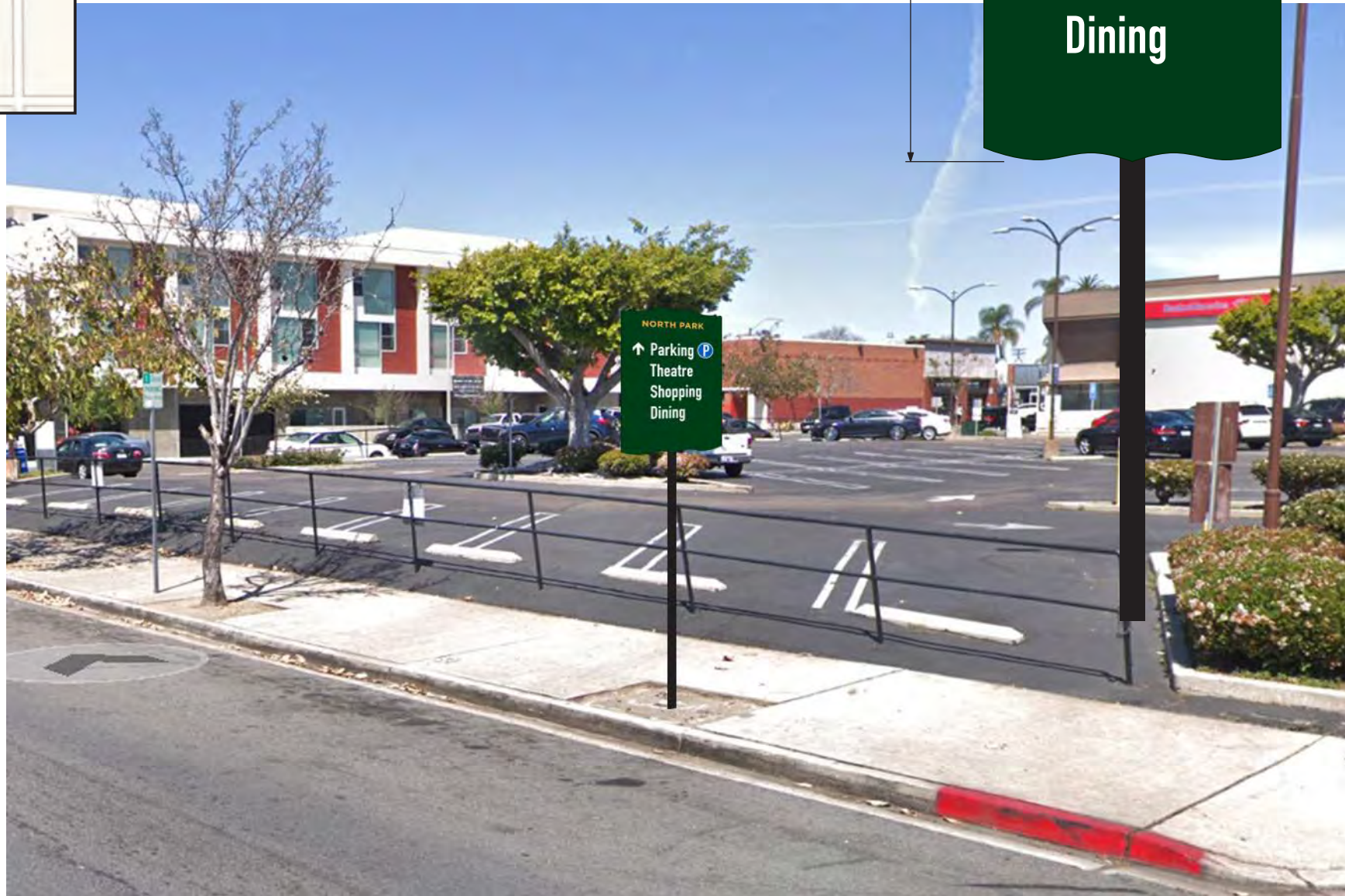
Integrated SIGNS
DREAM IT • BUILD IT • SIGN IT

1160 Pioneer Way, Suite M
El Cajon, California 92020-1944
T: 619.579.2229 | F: 619.579.7651
isasign.com | info@isasign.com

ORIGINAL CONCEPT
This design is the exclusive property of Integrated Signs and cannot be reproduced in whole or part without their prior written consent.



SEE SHT. 25 FOR SIGN LAYOUT & SPECIFICATIONS



POST MOUNTED DIRECTIONAL SIGN PANEL
North Park Way & 31st Street

C.2

NORTH PARK

Project Location:
San Diego, California 92104

Project No.: **181391-03**

Salesman: JJ

Designer: A2

Date: February 4, 2019

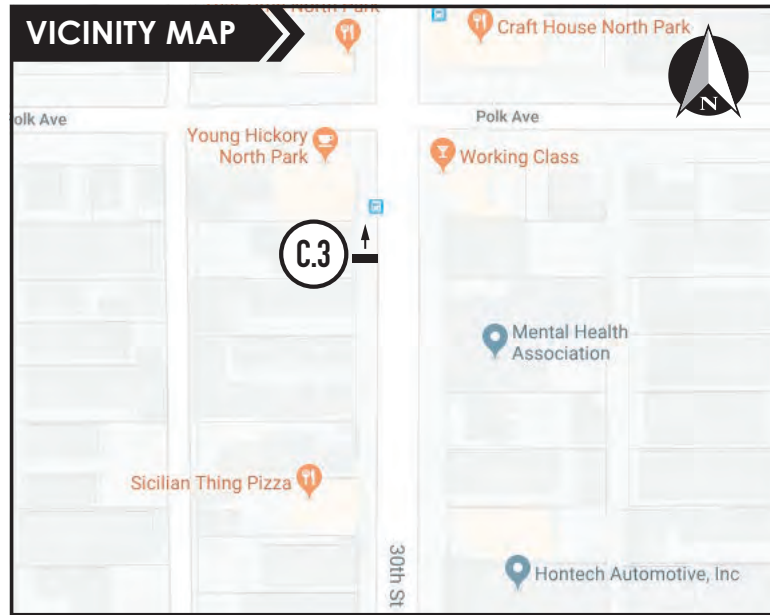
Scale: 1" = 1'-0"

- Revision:
- △
 - △
 - △
 - △
 - △
 - △
 - △
 - △
 - △
 - △
 - △
 - △
 - △
 - △
 - △
 - △
 - △
 - △
 - △
 - △



1160 Pioneer Way, Suite M
El Cajon, California 92020-1944
T: 619.579.2229 | F: 619.579.7651
isasign.com | info@isasign.com

ORIGINAL CONCEPT
This design is the exclusive property of Integrated Signs and cannot be reproduced in whole or part without their prior written consent.



C SEE SHT. 25 FOR SIGN LAYOUT & SPECIFICATIONS



POST MOUNTED DIRECTIONAL SIGN PANEL

30th Street and Polk Avenue

C.3

Project Location:
San Diego, California 92104

Project No.: **181391-03**

Salesman: JJ

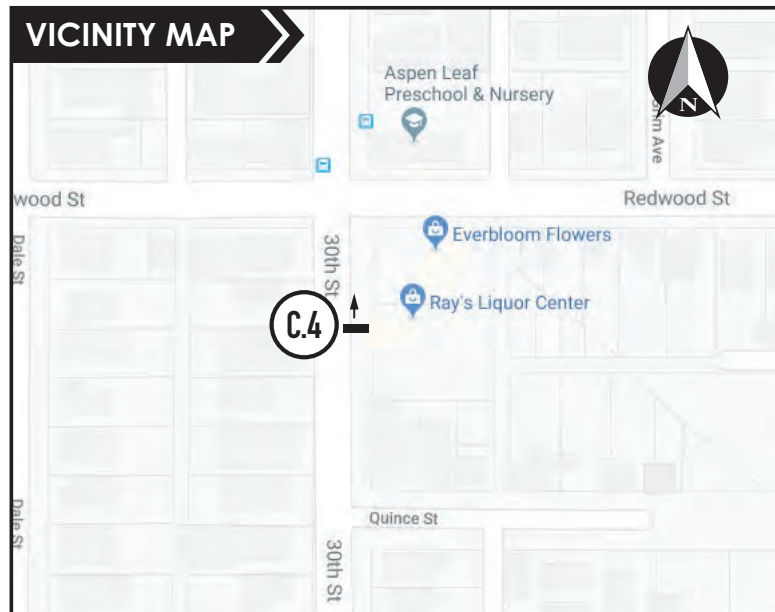
Designer: A²

Date: February 4, 2019

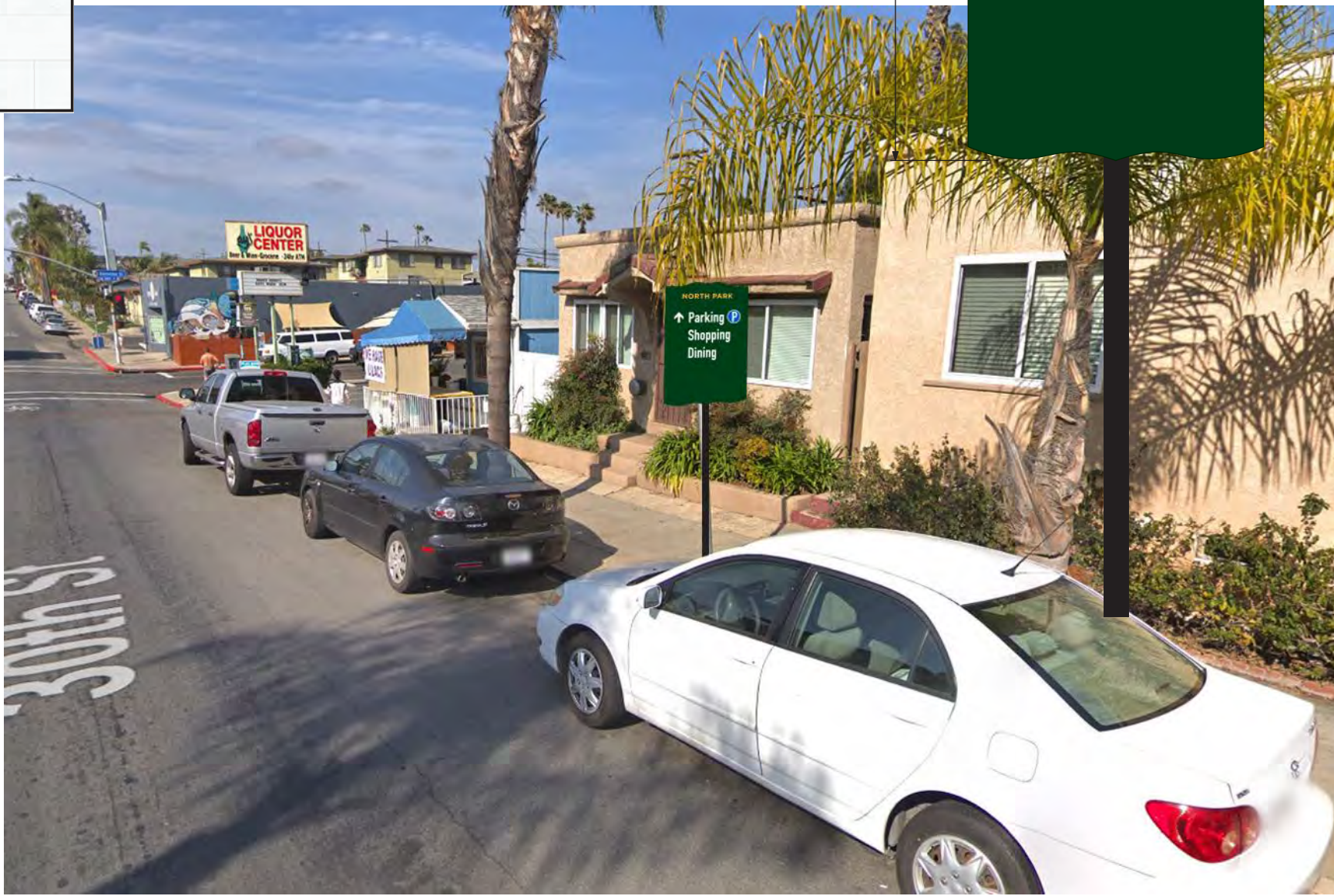
Scale: 1" = 1'-0"

Revision:

- △
- △
- △
- △
- △
- △
- △
- △
- △
- △
- △
- △
- △
- △
- △



C SEE SHT. 25 FOR SIGN LAYOUT & SPECIFICATIONS



POST MOUNTED DIRECTIONAL SIGN PANEL
30th Street & Redwood Street

C.4

Project Location:
San Diego, California 92104

Project No.: **181391-03**

Salesman: JJ

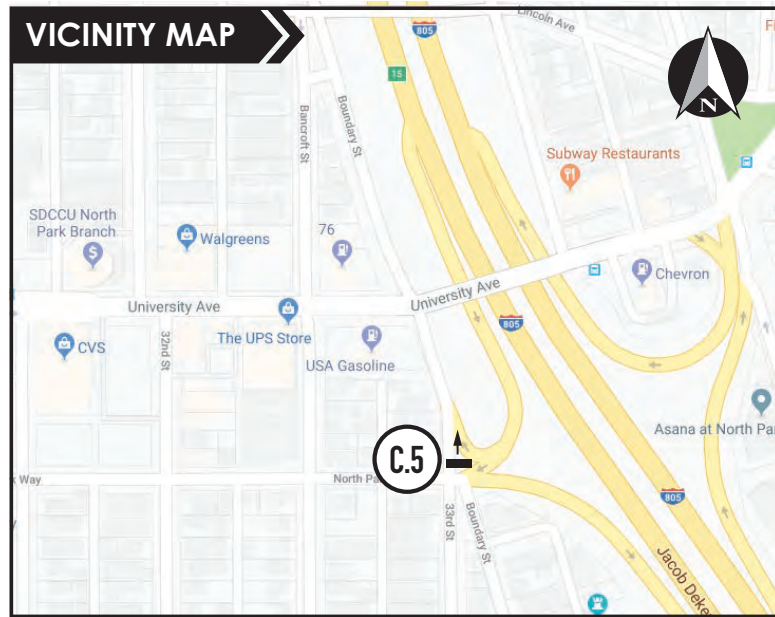
Designer: A²

Date: February 4, 2019

Scale: 1" = 1'-0"

Revision:

△	
△	
△	
△	
△	
△	
△	
△	
△	
△	
△	
△	
△	
△	



C SEE SHT. 25 FOR SIGN LAYOUT & SPECIFICATIONS



POST MOUNTED DIRECTIONAL SIGN PANEL

805 off Ramp

C.5

Project Location:
San Diego, California 92104

Project No.: **181391-03**

Salesman: JJ

Designer: A²

Date: February 4, 2019

Scale: 1" = 1'-0"

Revision:

- △
- △
- △
- △
- △
- △
- △
- △
- △
- △
- △
- △
- △
- △
- △

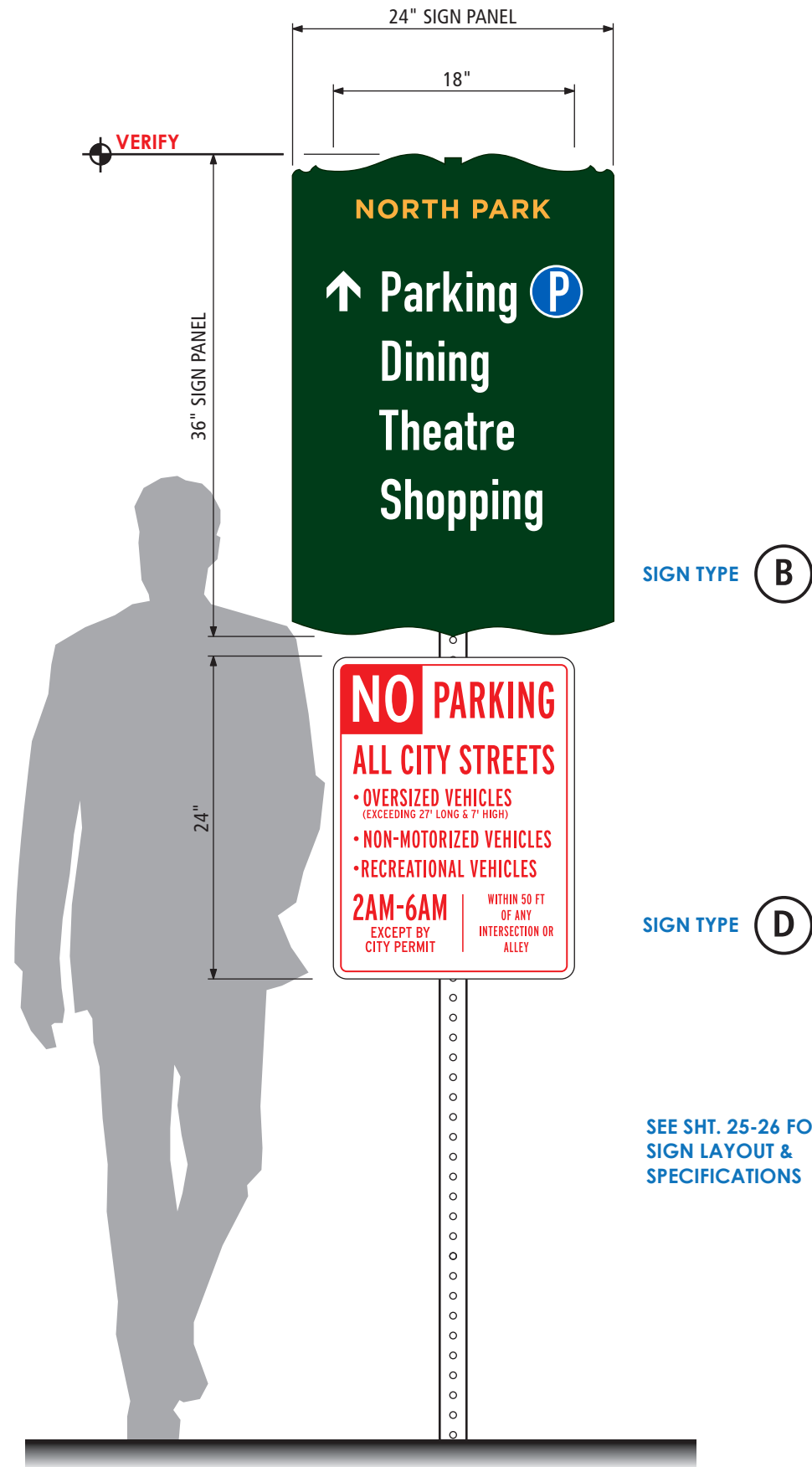


Integrated SIGNS
DREAM IT • BUILD IT • SIGN IT

1160 Pioneer Way, Suite M
El Cajon, California 92020-1944
T: 619.579.2229 | F: 619.579.7651
isasign.com | info@isasign.com

ORIGINAL CONCEPT

This design is the exclusive property of Integrated Signs and cannot be reproduced in whole or part without their prior written consent.



REPLACEMENT WAYFINDING & REGULATION SIGN PANELS

D.1

Project Location:
San Diego, California 92104

Project No.: **181391-03**

Salesman: JJ

Designer: A²

Date: February 4, 2019

Scale: 1" = 1'-0"

Revision:

- △
- △
- △
- △
- △
- △
- △
- △
- △
- △
- △
- △
- △
- △
- △



Integrated SIGNS
DREAM IT • BUILD IT • SIGN IT

1160 Pioneer Way, Suite M
El Cajon, California 92020-1944
T: 619.579.2229 | F: 619.579.7651
isasign.com | info@isasign.com

ORIGINAL CONCEPT
This design is the exclusive property of Integrated Signs and cannot be reproduced in whole or part without their prior written consent.

