

# PHASE I CULTURAL RESOURCE SURVEY FOR THE LOOKOUT RESIDENCES PROJECT

**CITY OF SAN DIEGO**

**Project No. 482904**

**Submitted to:**

**City of San Diego  
Development Services Department  
1222 First Avenue, MS 501  
San Diego, California 92101**

**Prepared for:**

**Justin Mandelbaum  
7727 Lookout Drive  
La Jolla, California 92037**

**Prepared by:**

**Brian F. Smith and Associates, Inc.  
14010 Poway Road, Suite A  
Poway, California 92064**



*September 13, 2017*

## **Archaeological Database Information**

***Authors:*** Jennifer R.K. Stropes and Brian F. Smith

***Consulting Firm:*** Brian F. Smith and Associates, Inc.  
14010 Poway Road, Suite A  
Poway, California 92064  
(858) 484-0915

***Report Date:*** September 13, 2017

***Report Title:*** Phase I Cultural Resource Survey for the Lookout Residences Project, City of San Diego (Project No. 482904)

***Prepared for:*** Justin Mandelbaum  
7727 Lookout Drive  
San Diego, California 92037

***Submitted to:*** City of San Diego  
Development Services Department  
1222 First Avenue, MS 501  
San Diego, California 92101

***Prepared by:*** Brian F. Smith and Associates, Inc.  
14010 Poway Road, Suite A  
Poway, California 92064

***USGS Quadrangle:*** *La Jolla, California (7.5 minute)*

***Study Area:*** APNs 352-012-17, -19, and -20

***Key Words:*** Phase I survey; negative; City of San Diego.

## **I. PROJECT DESCRIPTION AND LOCATION**

At the request of the property owners, Brian F. Smith and Associates, Inc. (BFSA) conducted an archaeological survey of three residential parcels located north and west of 7727 Lookout Drive (Assessor's Parcel Numbers [APNs] 352-012-17, -19, and -20). Specifically, the Area of Potential Effect (APE) is located in unsectioned Pueblo Lands of San Diego in the southeast corner of projected Section 22, Township 15 South, Range 4 West of the *La Jolla, California* USGS 7.5-minute Quadrangle. The archaeological survey was undertaken in order to determine if cultural resources exist within the property and to assess the possible effects of the proposed new residences on vacant lots. Maps of the property location have been included in Attachment B. BFSA conducted the archaeological survey of the property on August 31, 2017, accompanied by a Native American monitor from Red Tail Monitoring & Research, Inc. (Red Tail). Although the property is recorded as being within the vicinity of prehistoric Site SDI-39, no evidence of cultural resources was encountered during the survey.

## **II. SETTING**

The project setting includes both physical and biological contexts of the proposed project, as well as the cultural setting of prehistoric and historic human activities in the general area.

### **Natural Environment**

The 0.42-acre project is situated in the western portion of the Peninsular Ranges geomorphic province of southern California. Vegetation within the vicinity of the project is classified as entirely urban landscaping, including various species of shrubs, succulents, and lawn (Plate 1). The elevation throughout the project ranges from 166 to 190 feet above mean sea level (AMSL). The APE is located in the Coastal Plains Physiographic Province of San Diego County and contains mostly disturbed graded soil that sits upon the Quaternary-age Bay Point Formation (Adler and High 2001).



**Plate 1: Overview of APNs 352-012-19 and -20, facing north.**

### **Cultural Environment**

The cultures that have been identified in the general vicinity of the project consist of a possible Paleo Indian manifestation of the San Dieguito Complex, the Archaic and Early Milling Stone horizons represented by the La Jolla Complex, and the Late Prehistoric Kumeyaay culture. The area was used for ranching and farming following the Hispanic intrusion into the region, continuing through the historic period. A brief discussion of the cultural elements within the project is provided in the following subsections.

### **Paleoenvironment**

Because of the close relationship between prehistoric settlement and subsistence patterns and the environment, it is necessary to understand the setting in which these systems operated. At the end of the final period of glaciation, approximately 11,000 to 10,000 years before the present (YBP), the sea level was considerably lower than it is now; the coastline at that time would have been approximately two miles west of its present location (Smith and Moriarty 1985). At approximately 7,000 YBP, the sea level rose rapidly, filling in many coastal canyons that had been dry during the glacial period. The period between 7,000 and 4,000 YBP was characterized by conditions that were drier and warmer than they were previously, followed by a cooler, moister environment (Robbins-Wade 1990). Changes in sea level and coastal topography are often manifested in archaeological sites through the types of shellfish that were utilized by prehistoric groups. Different species of shellfish prefer certain types of environments, and dated sites that contain shellfish remains reflect the setting that was exploited by the prehistoric occupants.

Unfortunately, pollen studies have not been conducted for this section of San Diego; however, studies in other areas of southern California, such as Santa Barbara, indicate that the coastal plains supported a pine forest between approximately 12,000 and 8,000 YBP (Robbins-Wade 1990). After 8,000 YBP, this environment was replaced by more open habitats, which supported oak and non-arboreal communities. The coastal sage scrub and chaparral environments of today appear to have become dominant after 2,200 YBP (Robbins-Wade 1990).

### **Prehistory**

In general, the prehistoric record of San Diego County has been documented in many reports and studies, several of which represent the earliest scientific works concerning the recognition and interpretation of the archaeological manifestations present in this region. Geographer Malcolm Rogers initiated the recordation of sites in the area during the 1920s and 1930s, using his field notes to construct the first cultural sequences based upon artifact assemblages and stratigraphy (Rogers 1966). Subsequent scholars expanded the information gathered by Rogers and offered more academic interpretations of the prehistoric record. Moriarty (1966, 1967, 1969), Warren (1964, 1966), and True (1958, 1966) all produced seminal works that critically defined the various prehistoric cultural phenomena present in this region (Moratto 1984). Additional studies have sought to refine these earlier works to a greater extent (Cardenas 1986;

Moratto 1984; Moriarty 1966, 1967; True 1970, 1980, 1986; True and Beemer 1982; True and Pankey 1985; Waugh 1986). In sharp contrast, the current trend in San Diego prehistory has also resulted in a revisionist group that rejects the established cultural historical sequence for San Diego. This revisionist group (Warren et al. 1998) has replaced the concepts of La Jolla, San Dieguito, and all of their other manifestations with an extensive, all-encompassing, chronologically undifferentiated cultural unit that ranges from the initial occupation of southern California to around A.D. 1000 (Bull 1983, 1987; Ezell 1983, 1987; Gallegos 1987; Kyle et al. 1990; Stropes 2007). For the present study, the prehistory of the region is divided into four major periods: Early Man, Paleo Indian, Early Archaic, and Late Prehistoric.

Early Man Period (Prior to 8500 B.C.)

At the present time, there has been no concrete archaeological evidence to support the occupation of San Diego County prior to 10,500 YBP. Some archaeologists, such as Carter (1957, 1980) and Minshall (1976), have been proponents of Native American occupation of the region as early as 100,000 YBP. However, their evidence for such claims is sparse at best and has lost much support over the years as more precise dating techniques have become available for skeletal remains thought to represent early man in San Diego. In addition, many of the “artifacts” initially identified as products of the Early Man Period in the region have since been rejected as natural products of geologic activity. Some of the local proposed Early Man Period sites include Texas Street, Mission Valley (San Diego River Valley), Del Mar, La Jolla, Buchanan Canyon, and Brown (Bada et al. 1974; Carter 1957, 1980; Minshall 1976, 1989; Moriarty and Minshall 1972; Reeves 1985; Reeves et al. 1986).

Paleo Indian Period (8500 to 6000 B.C.)

For the region, it is generally accepted that the earliest identifiable culture in the archaeological record is represented by the material remains of the Paleo Indian Period San Dieguito Complex. The San Dieguito Complex was thought to represent the remains of a group of people who occupied sites in this region between 10,500 and 8,000 YBP, and who were related to or contemporaneous with groups in the Great Basin. As of yet, no absolute dates have been forthcoming to support the great age attributed to this cultural phenomenon. The artifacts recovered from San Dieguito Complex sites duplicate the typology attributed to the Western Pluvial Lakes Tradition (Moratto 1984; Davis et al. 1969). These artifacts generally include scrapers, choppers, large bifaces, large projectile points, and few milling tools. Tools recovered from San Dieguito Complex sites, along with the general pattern of their site locations, led early researchers to believe that the people of the San Dieguito Complex were a wandering, hunting, and gathering society (Moriarty 1969; Rogers 1966).

The San Dieguito Complex is the least understood of the cultures that have inhabited the San Diego County region. This is due to an overall lack of stratigraphic information and/or datable materials recovered from sites identified as the San Dieguito Complex. Currently, controversy

exists among researchers regarding the relationship of the San Dieguito Complex and the subsequent cultural manifestation in the area, the La Jolla Complex. Although, firm evidence has not been recovered to indicate whether the San Dieguito Complex “evolved” into the La Jolla Complex, the people of the La Jolla Complex moved into the area and assimilated with the people of the San Dieguito Complex, or the people of the San Dieguito Complex retreated from the area due to environmental or cultural pressures.

Early Archaic Period (6000 B.C. to A.D. 0)

Based upon evidence suggesting climatic shifts and archaeologically observable changes in subsistence strategies, a new cultural pattern is believed to have emerged in the San Diego region around 6000 B.C. This Archaic Period pattern is believed by archaeologists to have evolved from or replaced the San Dieguito Complex culture, resulting in a pattern referred to as the Encinitas Tradition. In San Diego, the Encinitas Tradition is thought to be represented by the coastal La Jolla Complex and its inland manifestation, the Pauma Complex. The La Jolla Complex is best recognized for its pattern of shell middens, grinding tools closely associated with marine resources, and flexed burials (Shumway et al. 1961; Smith and Moriarty 1985). Increasing numbers of inland sites have been identified as dating to the Archaic Period, focusing on terrestrial subsistence (Cardenas 1986; Smith 1996; Raven-Jennings and Smith 1999a, 1999b).

The tool typology of the La Jolla Complex displays a wide range of sophistication in the lithic manufacturing techniques used to create the tools found at their sites. Scrapers, the dominant flaked tool type, were created by either splitting cobbles or by finely flaking quarried material. Evidence suggests that after about 8,200 YBP, milling tools began to appear in the La Jolla Complex sites. Inland sites of the Encinitas Tradition (Pauma Complex) exhibit a reduced quantity of marine-related food refuse and contain large quantities of milling tools and food bone. The lithic tool assemblage shifts slightly to encompass the procurement and processing of terrestrial resources, suggesting seasonal migration from the coast to the inland valleys (Smith 1996). At the present time, the transition from the Archaic Period to the Late Prehistoric Period is not well understood. Many questions remain concerning cultural transformation between periods, possibilities of ethnic replacement, and/or a possible hiatus from the western portion of the county.

Late Prehistoric Period (A.D. 0 to 1769)

The transition into the Late Prehistoric Period in the project is primarily represented by a marked change in archaeological patterning known as the Yuman Tradition. This tradition is primarily represented by the Cuyamaca Complex, which is believed to be derived from the mountains of southern San Diego County. The people of the Cuyamaca Complex are considered as ancestral to the ethnohistoric Kumeyaay (Diegueño). Although several archaeologists consider the local Native American tribes to be latecomers, the traditional stories and histories that are orally passed down by the local Native American groups speak both presently and ethnographically to tribal presence in the region as being since the time of creation.

The Kumeyaay Native Americans were a seasonal hunting and gathering people with cultural elements that were very distinct from the people of the La Jolla Complex. Noted variations in material culture included cremation, the use of bows and arrows, and adaptation to the use of the acorn as a main food staple (Moratto 1984). Along the coast, the Kumeyaay made use of marine resources by fishing and collecting shellfish for food. Game and seasonally available plant food resources (including acorns) were sources of nourishment for the Kumeyaay. The most important food resource for these people was the acorn, which represented a storable surplus, which in turn allowed for seasonal sedentism and its attendant expansion of social phenomena.

Firm evidence has not been recovered to indicate whether the people of the La Jolla Complex were present when the Kumeyaay Native Americans migrated into the coastal zone. However, stratigraphic information recovered from Site SDI-4609 in Sorrento Valley suggests a possible hiatus of  $650 \pm 100$  years between the occupation of the coastal area by the La Jolla Complex ( $1,730 \pm 75$  YBP is the youngest date for the La Jolla Complex inhabitants at SDI-4609) and late prehistoric cultures (Smith and Moriarty 1983). More recently, a reevaluation of two prone burials at the Spindrift Site excavated by Moriarty (1965) and radiocarbon dates of a pre-ceramic phase of Yuman occupation near the San Diego suburb of Santee suggest a commingling of the latest La Jolla Complex inhabitants and the earliest Yuman inhabitants about 2,000 YBP (Kyle and Gallegos 1993).

## **History**

### **Exploration Period (1530 to 1769)**

The historic period around San Diego Bay began with the landing of Juan Rodriguez Cabrillo and his men in 1542 (Chapman 1925). Sixty years after the Cabrillo expeditions (1602 to 1603), Sebastian Vizcaíno made an extensive and thorough exploration of the Pacific coast. Although his voyage did not extend beyond the northern limits of the Cabrillo track, Vizcaíno had the most lasting effect on the nomenclature of the coast. Many of the names Vizcaíno gave to various locations throughout the region have survived to the present time, whereas nearly every one of Cabrillo's has faded from use. For example, Cabrillo gave the name "San Miguel" to the first port he stopped at in what is now the United States; 60 years later, Vizcaíno changed the port name to "San Diego" (Rolle 1969).

### **Spanish Colonial Period (1769 to 1821)**

The Spanish occupation of the claimed territory of Alta California took place during the reign of King Carlos III of Spain (Engelhardt 1920). Jose de Gálvez, a powerful representative of the king in Mexico, conceived the plan to colonize Alta California and thereby secure the area for the Spanish Crown (Rolle 1969). The effort involved both a military and religious contingent, where the overall intent of establishing forts and missions was to gain control of the land and the native inhabitants through conversion. Actual colonization of the San Diego area began on July 16, 1769, when the first Spanish exploring party, commanded by Gaspar de Portolá (with Father

Junípero Serra in charge of religious conversion of the native populations), arrived by the overland route to San Diego to secure California (Palou 1926). The natural attraction of the harbor at San Diego and the establishment of a military presence in the area solidified the importance of San Diego to the Spanish colonization of the region and the growth of the civilian population. Missions were constructed from San Diego to as far north as San Francisco. The mission locations were based upon important territorial, military, and religious considerations. Grants of land were made to persons who applied, but many tracts reverted back to the government for lack of use. As an extension of territorial control by the Spanish Empire, each mission was placed so as to command as much territory and as large a population as possible. While primary access to California during the Spanish Period was by sea, the route of El Camino Real served as the land route for transportation, commercial, and military activities within the colony. This route was considered to be the most direct path between the missions (Rolle 1969; Caughey 1970). As increasing numbers of Spanish and Mexican peoples, as well as the later Americans during the Gold Rush, settled in the area, the Native American populations diminished as they were displaced or decimated by disease (Carrico and Taylor 1983).

#### Mexican Period (1821 to 1846)

On September 16, 1810, the priest Father Miguel Hidalgo y Costilla started a revolt against Spanish rule. He and his untrained Native American followers fought against the Spanish, but his revolt was unsuccessful and Father Hidalgo was executed. After this setback, Father José Morales led the revolutionaries, but he too failed and was executed. These two men are still symbols of Mexican liberty and patriotism. After the Mexican-born Spanish and the Catholic Church joined the Revolution, Spain was finally defeated in 1821. Mexican Independence Day is celebrated on September 16 of each year, signifying the anniversary of the start of Father Hidalgo's revolt. The revolution had repercussions in the northern territories, and by 1834, all of the mission lands had been removed from the control of the Franciscan Order under the Acts of Secularization. Without proper maintenance, the missions quickly began to disintegrate, and after 1836, missionaries ceased to make regular visits inland to minister to the needs of the Native Americans (Engelhardt 1920). Large tracts of land continued to be granted to persons who applied for them or who had gained favor with the Mexican government. Grants of land were also made to settle government debts and the Mexican government was called upon to reaffirm some older Spanish land grants shortly before the Mexican-American War of 1846 (Moyer 1969).

#### Anglo-American Period (1846 to Present)

California was invaded by United States troops during the Mexican-American War of 1846 to 1848. The acquisition of strategic Pacific ports and California land was one of the principal objectives of the war (Price 1967). At the time, the inhabitants of California were practically defenseless, and they quickly surrendered to the United States Navy in July of 1847 (Bancroft 1886).



The cattle ranchers of the “counties” of southern California had prospered during the cattle boom of the early 1850s. They were able to “reap windfall profit...pay taxes and lawyer’s bills...and generally live according to custom” (Pitt 1966). However, raising cattle soon declined, contributing to the expansion of agriculture. With the passage of the “No Fence Act,” San Diego’s economy shifted from raising cattle to farming (Robinson 1948). The act allowed for the expansion of unfenced farms, which was crucial in an area where fencing material was practically unavailable. Five years after its passage, most of the arable lands in San Diego County had been patented as either ranchos or homesteads, and growing grain crops replaced raising cattle in many of the county’s inland valleys (Blick 1976; Elliott 1883 [1965]).

By 1870, farmers had learned to dry farm and were coping with some of the peculiarities of San Diego County’s climate (*San Diego Union*, February 6, 1868; Van Dyke 1886). Between 1869 and 1871, the amount of cultivated acreage in the county rose from less than 5,000 acres to more than 20,000 acres (*San Diego Union*, January 2, 1872). Of course, droughts continued to hinder the development of agriculture (Crouch 1915; *San Diego Union*, November 10, 1870; Shipek 1977). Large-scale farming in San Diego County was limited by a lack of water and the small size of arable valleys. The small urban population and poor roads also restricted commercial crop growing. Meanwhile, cattle continued to be grazed in parts of inland San Diego County. In the Otay Mesa area, for example, the “No Fence Act” had little effect on cattle farmers because ranches were spaced far apart and natural ridges kept the cattle out of nearby growing crops (Gordinier 1966).

During the first two decades of the twentieth century, the population of San Diego County continued to grow. The population of the inland county declined during the 1890s, but between 1900 and 1910, it rose by about 70 percent. The pioneering efforts were over, the railroads had broken the relative isolation of southern California, and life in San Diego County had become similar to other communities throughout the west. After World War I, the history of San Diego County was primarily determined by the growth of San Diego Bay. In 1919, the United States Navy decided to make the bay the home base for the Pacific Fleet (Pourade 1964), followed by the aircraft industry in the 1920s (Heiges 1976). The establishment of these industries led to the growth of the county as a whole; however, most of the civilian population growth occurred in the north county coastal areas, where the population almost tripled between 1920 and 1930. During this time period, the history of inland San Diego County was subsidiary to that of the city of San Diego, which had become a Navy center and an industrial city (Heiges 1976). In inland San Diego County, agriculture became specialized, and recreational areas were established in the mountain and desert areas. Just before World War II, urbanization began to spread to the inland parts of the county.

### History of the La Jolla Area

A limited research effort was initiated in order to characterize the circumstances of the early development of La Jolla so that the current project could be placed in context with the

surrounding community. Several early land developments contributed to the overall disturbance of the major prehistoric sites in the area of the project. However, small development projects continuously encounter pockets of cultural sites that have survived grading and construction impacts throughout the years.

The origin of the name La Jolla, most researchers agree, is a variation of the original “La Hoya,” which literally translated from Spanish means “pit, hole, grave, or valley.” The equivalent American translation is “river basin” (Castillo and Bond 1975). The city surveyor, James Pascoe, spelled it “La Joya” on his map of city land in 1870, which translates as “the jewel.” The location of La Hoya (or La Joya) was consistently shown as the canyon in which the southern portion of Torrey Pines Road is located today. The first post office was established on February 28, 1888 and closed on March 31, 1893, but reopened as “Lajolla” (one word) on August 17, 1894. On June 19, 1905, the name of this post office was changed to “La Jolla” (two words) (Salley 1977).

The first purchase of Pueblo Lands in this area occurred on February 27, 1869, when the City of San Diego sold Pueblo Lot 1261 to Samuel Sizer. On the same day, the City sold Pueblo Lot 1259 to Daniel Sizer. These lots sold for \$1.25 per acre. Both lots were located south of “La Hoya Valley.” The *San Diego Union* (March 31, 1869) referred to the canyon as “La Hoya” when describing Sizer’s agricultural development to the south. By the 1870s, excursions to the point and cove were offered by the Horton House in their Concord Coach, a stagecoach drawn by four horses (*San Diego Union*, August 9, 1932).

The boom of the 1880s extended to La Jolla in the form of the construction of a hotel and rental cottages (Randolph 1955). Initially, water supplies were unreliable, consisting of only two sources, a small well in Rose Canyon and a small pipeline connected to the Pacific Beach water supply. Reliable transportation to La Jolla came with the extension of the San Diego, Old Town, and Pacific Beach Railway to La Jolla in 1894. This narrow-gauge railroad was responsible for bringing passengers and prefabricated cottages (on flat cars) to the growing community (Randolph 1955). The railroad was dismantled in 1919, but not before an unsuccessful experiment with a gasoline-powered rail car (known locally as the “Red Devil”) was conducted.

As the number of residences and businesses increased in La Jolla, so did the need for public services. On July 10, 1888, the San Diego City Council passed an ordinance providing for the disposal for garbage, night soil, dead animals, ashes, and rubbish (Document 101817). In 1909, natural gas was brought to La Jolla, and in 1911, electricity was made available to the community (Randolph 1955). An electric railway provided service to La Jolla between 1924 and 1940. In 1918, street paving began, and by 1922, the Girard Street business section was completely paved.

Visitors to La Jolla enjoyed the park at Alligator Head from the earliest days of stagecoach excursions. Trees and shrubs were planted around the park, but a months-long failure of the water supply during 1890 caused many of the plants to die. During the 1890s, the park was also the focus of construction for guest cottages and hotels, such as the La Jolla Beach House, which indicates that developmental impacts to prehistoric archaeological resources, as well as impacts from increased visitation, occurred from this early period. Randolph (1955) wrote about a Native

American settlement at La Jolla (probably SDI-39), which was supported by Native American informants and the recovery of several artifacts, including metates, stone utensils, and other relics from La Jolla Cove. As the development of La Jolla continued, other subdivisions and plots were converted from farming and/or grazing to residential use. The “La Jolla Vista” subdivision of 1923, the location of the current project, was one of those subdivisions (San Diego County Engineering Map Records).

The earliest notable development in this area was the construction of the Spindrift Inn southwest of the subject property in the 1920s. Also at this time, the initial development of the La Jolla Beach and Tennis Club (originally the La Jolla Beach and Yacht Club) took place to the southwest of the subject parcel. These early facilities gained in popularity and were successful in spite of the Depression that gripped the country between the stock market crash of 1929 and the opening of World War II. The La Jolla Vista subdivision, on the other hand, was slow in building to capacity, possibly because of the real estate bust of 1925 to 1926 (Brandes et al. 1999).

Two military training camps came to La Jolla during World War II: Camp Callan and Camp Elliot. In addition, two emplacements on Mount Soledad and one on the beach in La Jolla were established during the war years (Pierson 2001). Although these military installations were replaced after the Korean War with the University of California at San Diego campus and the expansion of the Scripps Institution of Oceanography, the economic base of La Jolla grew to include a substantial business element. Today, this trend continues with ever-present tourism playing a significant part in the local economy. Throughout the history of this community, the residential population has included both permanent and seasonal residents, many of whom have achieved a significant degree of financial and historical notoriety and success.

### **III. AREA OF POTENTIAL EFFECT (APE)**

This archaeological survey encompassed three residential parcels (APNs 352-012-17, -19, and -20) off Lookout Drive in the La Jolla community of the city of San Diego. The APE can be characterized as undeveloped land containing imported fill and minimal landscaping (Plate 2). The parcels lie to the north of Soledad Avenue bounded on the east and west by a curve created by Lookout Drive in the La Jolla Shores area of San Diego (Figures 1 through 3: Attachment B). The proposed project includes the construction of one single-family



**Plate 2: Overview of APN 352-012-17, facing east.**

residence on each parcel (Figure 4: Attachment B).

Preliminary background research for the property was conducted to evaluate the potential of the project to contain subsurface prehistoric resources. Previous studies indicate that the project is located 350 feet southeast of the recorded boundary of the Spindrift Archaeological District (proposed), which includes SDI-39, a previously recorded prehistoric village complex occupied during the late Holocene. Portions of SDI-39 have been previously determined to be significant according to California Environmental Quality Act (CEQA) and City of San Diego criteria. The large village complex is recorded throughout the Spindrift neighborhood on the south and extends across the La Jolla Beach and Tennis Club facility along La Jolla Shores Drive for a considerable distance. The entire prehistoric site covers many acres along the coast and has been impacted by historic and modern developments. Previous testing and mitigation programs have identified a rich cultural deposit that lies underneath modern development elements such as streets and buildings. Prehistoric artifacts recovered from SDI-39 include manos, metates, arrow projectile points, scrapers, utilized flake tools, scraper planes, bifaces, knives, drills, hammerstones, core tools, Tizon Brown Ware fragments, debitage, trade materials, shell beads (*Olivella* spire-lopped, *Olivella* cups, and *Olivella* and *Haliotis* disks), shell pendants, and bone tools, as well as animal bone (fish, terrestrial mammals, and birds), fire-affected rock, cobble hearths, charcoal, and marine shell (mostly *Chione*, *Argopecten*, and *Ostrea*). Additionally, the archaeological record denotes that multiple human remains have been identified throughout the Spindrift neighborhood in association with the occupation of SDI-39 over a period of 7,000 to 8,000 years. It is evident that the Lookout Residences Project lies within a highly sensitive archaeological area.

#### **IV. STUDY METHODS**

The archaeological assessment included a reconnaissance of the property and an institutional records search review of previous studies in the area. The archaeological reconnaissance was monitored by Native American monitor Gabe Kitchen from Red Tail. BFSa reviewed the results of a records search completed by the South Coastal Information Center (SCIC) at San Diego State University (SDSU) for the project to determine the presence of any previously recorded cultural resources (Attachment C).

The results of the records search indicate that no cultural resources are identified within the boundaries of the Lookout Residences Project. The primary prehistoric sites within a quarter mile of the project area include SDI-39, SDI-18,305, and SDI-19,056. The property is adjacent to SDI-39, which has been described as a highly significant prehistoric Native American village complex spanning the Archaic and Late Prehistoric cultural periods. These sites have been disturbed by development of this area since the early 1900s, which has resulted in the spreading of prehistoric materials over a large area by grading and contouring the land. Evidence of the prehistoric sites is found throughout the existing neighborhood of La Jolla Shores. A total of 74 recorded cultural resources, including 28 prehistoric, 14 historic, and 6 multicomponent sites, 21

historic addresses, and five historic sidewalk stamps, are located within one mile of the property. The majority of the recorded resources are historic residences or trash scatters. The prehistoric sites include prehistoric habitation and shell midden sites. An additional 182 historic addresses were also recorded within a one-mile radius of the APE. The records search also indicated that 270 previous investigations have been conducted within one mile of the project, two of which encompassed portions of the project (Pignuolo and Bietz 2008; Kane 2013). No cultural resources were discovered as a result of these studies.

A Sacred Lands File search was requested by BFSA from the Native American Heritage Commission (NAHC), which yielded negative results, though the records search deemed the area sensitive for potential tribal cultural resources. Tribes that are culturally affiliated with the project's APE received a letter from BFSA regarding the project. As of the date of this report, BFSA has received one response from the Viejas Band of Kumeyaay Indians indicating that the project site has cultural significance or ties to Viejas, and requesting a Kumeyaay Cultural Monitor on site for all future ground disturbing activities. Original correspondence may be found in Attachment D.

## **V. RESULTS OF THE STUDY**

### **Background Research**

There is documented evidence of the presence of the Archaic La Jolla cultural horizon and Late Prehistoric Kumeyaay temporary camps and village sites in the general area of the project. The project property is identified as being east of the Spindrifft archaeological site (SDI-39/W-1). Documentation of this site is continually being updated as new projects encounter buried parts of the site (both intact and disturbed). The presence of 74 known cultural resources, including SDI-39, and 182 historic addresses recorded near the project APE, suggests that historic and prehistoric cultural deposits may potentially be encountered at the subject property. Because of this potential, and in accordance with City of San Diego guidelines, an archaeological survey was necessary to determine if archaeological resources exist within the project boundaries that might be impacted by the proposed project.

### **Field Reconnaissance**

On August 31, 2017, Senior Project Archaeologist Jennifer R.K. Stropes conducted the field survey of the property. A Native American monitor from Red Tail, Gabe Kitchen, actively participated in the survey. The survey was limited by the constraints of the landscaping and fill dirt. As a result of the previous import of fill dirt on the southern portions of APNs 352-012-17 and -19, only a three-foot wide area on the northern periphery of both lots provided a view of the native ground surface. However, approximately 90 percent of the ground surface was visible within APN 352-012-20. Jennifer Stropes carefully inspected exposed ground surfaces and scraped some areas to expose soil for inspection. The survey did not result in the observation of

any artifacts, cultural ecofacts, or other materials related to the prehistoric or historic land use within the project boundaries. No midden soils or cultural resources were observed during the survey; however, the survey coverage of APNs 352-012-17 and -19 was limited by the existing landscaping and imported fill.

**Evaluation**

Based upon the results of the survey and records search, no cultural resources have been identified on the subject property. No further investigations are necessary as part of this survey process.

**VI. RECOMMENDATIONS**

The City of San Diego typically requires two tasks for an archaeological study of this nature: assessment of the potential for cultural resources on the property and a visual inspection for the presence of cultural resources. As noted previously, no evidence of any prehistoric cultural resources was identified within the property during the survey. However, due to the presence of recorded cultural resources within a one-mile radius of the project and the presence of imported fill on APNs 352-012-17 and -19, the potential exists that buried cultural deposits may be present under the landscaping and fill that cover the property. Based upon the potential to encounter buried archaeological deposits or artifacts associated with the prehistoric occupation of SDI-39 and other known sites within the La Jolla neighborhood over the past 8,000 years, as well as the historic use and development of La Jolla since the late 1800s, archaeological and Native American monitoring of grading or trenching is recommended for the Lookout Residences Project.

**VII. SOURCES CONSULTED**

**DATE**

National Register of Historic Places <input checked="" type="checkbox"/>	Month and Year: August 2017
California Register of Historical Resources <input checked="" type="checkbox"/>	Month and Year: August 2017
City of San Diego Historical Resources Register <input checked="" type="checkbox"/>	Month and Year: August 2017
Archaeological/Historical Site Records: South Coastal Information Center <input checked="" type="checkbox"/>	Month and Year: August 2017
Other Sources Consulted: NAHC Sacred Lands File Search (Attachment D) References (Attachment A)	

## VIII. CERTIFICATION

I hereby certify that the statements furnished above and in the attached exhibits present the data and information required for this archaeological report, and that the facts, statements, and information presented are true and correct to the best of my knowledge and belief, and have been compiled in accordance with CEQA criteria as defined in Section 15064.5 and City of San Diego Historical Resources Guidelines.



---

Brian F. Smith  
Principal Investigator

September 13, 2017

Date

**IX. ATTACHMENT A**

**References**

**Resumes**



## **REFERENCES**

Adler, Daniel B. and John R. High

- 2001 Report of Preliminary Geotechnical Recommendations, Ampudia Street Office Building, 3921 Ampudia Street, San Diego, California. Report on file with Southern California Soil and Testing, Inc.

Bada, Jeffrey L., Roy A. Schroeder, and George F. Carter

- 1974 New Evidence for the Antiquity of Man in America Deduced from Aspartic Acid Racemization. *Science* 184:791-793.

Bancroft, Hubert Howe

- 1886 *History of California*, Volume V; 1846-1848. The History Company, San Francisco, California.

Blick, J.D.

- 1976 *Agriculture in San Diego County*. In *San Diego – An Introduction to the Area*. Edited by Philip Pryde. Kendall/Hunt Publishing Company, Dubuque, Iowa.

Brandes, Ray, Scott Moomjian and Jacquelyn Landis

- 1999 *Historical and Architectural Report for 1905 Spindrift Drive, La Jolla, California*. Unpublished report on file with City of San Diego Development Services Department.

Brian F. Smith and Associates

- Various Dates Research Library holdings including Sanborn Maps, City Directories, Published Regional Histories, and Geologic and Paleontological References.

Bull, C.

- 1983 Shaking the Foundations: The Evidence for San Diego Prehistory. *Cultural Resource Management Casual Papers* 1(3):15-64. Department of Anthropology, San Diego State University.

- 1987 A New Proposal: Some Suggestions for San Diego Prehistory. In: *San Dieguito-La Jolla: Chronology and Controversy*, edited by Dennis Gallegos, pp. 35-42. San Diego County Archaeological Society Research Paper No. 1.

Cardenas, D. Sean

- 1986 Avocado Highlands: An Inland Late La Jolla and Preceramic Yuman Site from Southern San Diego County. *Cultural Resource Management Casual Paper* 2(2). Department of Anthropology, San Diego State University.

Carrico, Richard L. and Clifford V.F. Taylor

- 1983 *Excavation of a Portion of Ystagua: A Coastal Valley Ipai Settlement*. Environmental Impact Report on file at the City of San Diego, Environmental Quality Division.

Carter, George F.

1957 *Pleistocene Man at San Diego*. Johns Hopkins Press, Baltimore.

1980 *Earlier than You Think: A Personal View of Man in America*. Texas A&M University Press, College Station.

Castillo, Carlos and Otto F. Bond

1975 *The University of Chicago Spanish Dictionary* (Pocket Book edition). Simon and Schuster, New York.

Caughey, John W.

1970 *California: A Remarkable State's Life History* (Third Edition). Prentice-Hall, Englewood Cliffs, New Jersey.

Chapman, Charles E.

1925 *A History of California: The Spanish Period*. The Macmillan Company, New York.

City of San Diego

Various Dates *City Ordinances*. San Diego City Clerk.

Crouch, Herbert

1915 *Reminiscences, 1868-1915*. Unpublished manuscript, California Room, San Diego Public Library; and SDHS Library, Serra Museum.

Davis, E.L., C.W. Brott, and D.L. Weide

1969 *The Western Lithic Co-Tradition*. *San Diego Museum Papers* (No. 6). San Diego Museum of Man, San Diego.

Elliott, Wallace W.

1883 *History of San Bernardino and San Diego Counties* (1965 Edition). Riverside Museum Press, Riverside, California.

Engelhardt, Zephyryn

1920 *San Diego Mission*. James M. Barry Company, San Francisco.

Ezell, Paul H.

1983 *A New Look at the San Dieguito Culture*. *Cultural Resource Management Casual Papers* 1(3):103-109. Department of Anthropology, San Diego State University, San Diego.

1987 *The Harris Site - An Atypical San Dieguito Site, or am I Beating a Dead Horse?* In: *San Dieguito-La Jolla: Chronology and Controversy*, edited by Dennis Gallegos, pp. 15-22. San Diego County Archaeological Society Research Paper No. 1.

Gallegos, Dennis R.

1987 *A Review and Synthesis of Environmental and Cultural Material for the Batiquitos*

- Lagoon Region. In *San Dieguito-La Jolla: Chronology and Controversy*, Edited by D. Gallegos. San Diego County Archaeological Society Research Paper 1:23-34.
- Gordinier, Jerry G.  
1966 Problems of Settlement in the San Diego Foothills. Unpublished Master's thesis, San Diego State College, San Diego.
- Heiges, Harvey  
1976 The Economic Base of San Diego County. In *San Diego – An Introduction to the Region*, edited by Philip Pryde. Kendall/Hunt Publishing Company, Dubuque, Iowa.
- Kane, Diane  
2013 Historical Resource Research Report: George F. and Marian H. Cottrell/Cliff May House/Yianilos Estate. Unpublished report on file at the South Coastal Information Center at San Diego State University, San Diego, California.
- Kyle, Carolyn E. and Dennis R. Gallegos  
1993 *Data Recovery Program for a Portion of Prehistoric Site CA-SDI-10148, East Mission Gorge Pump Station and Force Main, San Diego, California*. Unpublished report on file at the South Coastal Information Center at San Diego State University, San Diego, California.
- Kyle, Carolyn, Adella Schroth, and Dennis R. Gallegos  
1990 *Early Period Occupation at the Kuebler Ranch Site SDI-8,654 Otay Mesa, San Diego County, California*. Prepared for County of San Diego, Department of Public Works by ERCE Environmental and Energy Services Co., San Diego.
- Minshall, Herbert L.  
1976 *The Broken Stones*. Copley Books, San Diego.  
  
1989 *Buchanan Canyon: Ancient Human Presence in the Americas*. Slawson Communications, San Marcos, California.
- Moratto, Michael J.  
1984 *California Archaeology*. Academic Press, New York.
- Moriarty, James R., III  
1965 Cosmogeny, Rituals, and Medical Practice Among the Diegueño Indians of Southern California. *Anthropological Journal of Canada* 3(3):2-14.  
  
1966 Culture Phase Divisions Suggested by Topological Change Coordinated with Stratigraphically Controlled Radiocarbon Dating in San Diego. *Anthropological Journal of Canada* 4(4):20-30.  
  
1967 Transitional Pre-Desert Phase in San Diego, California. *Science* 155(3762):553-336.

Scripps Institution – UCSD Contribution No. 2278.

1969 San Dieguito Complex: Suggested Environmental and Cultural Relationships. *Anthropological Journal of Canada* 7(3):2-18.

Moriarty, James Robert, III, and Herbert L. Minshall

1972 A New Pre-Desert Site Discovered near Texas Street. *Anthropological Journal of Canada* 10(3):10-13.

Moyer, Cecil C.

1969 *Historic Ranchos of San Diego*. Edited by Richard F. Pourade. Union-Tribune Publishing Company, San Diego.

Palou, Fray Francisco

1926 *Historical Memoirs of New California*. Edited by Herbert Eugene Bolton (4 Volumes). University of California Press, Berkeley.

Pierson, Larry J.

2001 *Results of a Modified HABS Documentation and Construction Monitoring for the Jack White Residence Project*. Brian F. Smith and Associates. Submitted to Jack White. Unpublished report on file at the South Coastal Information Center at San Diego State University, San Diego, California.

Pigniolo, Andrew R. and Spencer G. Bietz

2008 Cultural Resource Monitoring Report for the Water Group Job 541 Water Line Replacement Project, City of San Diego, California. Laguna Mountain Environmental, Inc. Unpublished report on file at the South Coastal Information Center at San Diego State University, San Diego, California.

Pitt, Leonard

1966 *The Decline of the Californios*. University of California Press, Los Angeles.

Pourade, Richard F.

1964 *The Glory Years*. Union-Tribune Publishing Company, San Diego, California.

Price, Glenn W.

1967 *Origins of the War with Mexico*. University of Texas Press, Austin.

Randolph, Howard Stelle Fitz

1955 *La Jolla Year by Year*. Library Association of La Jolla, California.

Raven-Jennings, Shelly and Brian F. Smith

1999a *Final Report for Site SDI-8330/W-240 'Scraper Hill,' Escondido, California*. Unpublished report on file at the South Coastal Information Center at San Diego State University, San Diego, California.

- 1999b *Report of Excavations at CA-SDI-4608: Subsistence and Technology Transitions during the Mid-to-Late Holocene in San Diego County (Scripps Poway Parkway)*. Unpublished report on file at the South Coastal Information Center at San Diego State University, San Diego, California.

Reeves, Brian O.K.

- 1985 *Early Man in the Americas: Who, When, and Why*. In: *Woman, Poet, Scientist: Essays in New World Anthropology Honoring Dr. Emma Louise Davis*, edited by Thomas C. Blackburn, pp. 79-104. Ballena Press Anthropological Papers No. 29. Los Altos, California.

Reeves, Brian, John M. D. Pohl, and Jason W. Smith.

- 1986 *The Mission Ridge Site and the Texas Street Question*. In: *New Evidence for the Pleistocene Peopling of the Americas*, edited by Alan Lyle Bryan, pp. 65-80. Center for the Study of Early Man, University of Maine, Orono.

Robbins-Wade, Mary Judith

- 1990 *Prehistoric Settlement Pattern of Otay Mesa San Diego County, California*. Unpublished Master's thesis, San Diego State University, San Diego, California.

Robinson, W.W.

- 1948 *Land in California*. University of California Press, Berkeley.

Rogers, Malcolm

- 1966 *Ancient Hunters of the Far West*. Edited with contributions by H.M. Worthington, E.L. Davis, and Clark W. Brott. Union Tribune Publishing Company, San Diego.

Rolle, Andrew F.

- 1969 *California: A History* (Second Edition). Thomas Y. Crowell Company, New York.

Salley, Harold E.

- 1977 *History of California Post Offices 1849-1976*. Published Privately. La Mesa, California.

San Diego County Engineering Records

- Various Dates. Various Engineering Maps.

Shipek, Florence

- 1977 *A Strategy for Change: The Luiseño of Southern California*. Unpublished Doctoral dissertation on file at the University of Hawaii.

Shumway, George, Carl L. Hubbs, and James R. Moriarty

- 1961 *Scripps Estate Site, San Diego, California: A La Jolla Site Dated 5,460-7,370 Years Before the Present*. *Annals of the New York Academy of Sciences* 93(3).

Smith, Brian F.

- 1996 *The Results of a Cultural Resource Study at the 4S Ranch*. Report on file at the South Coastal Information Center, San Diego State University, San Diego.

Smith, Brian F. and James R. Moriarty

- 1983 *An Archaeological Evaluation of a Drainage Channel Project at the South Sorrento Business Park*. Environmental Impact Report on file at the City of San Diego.
- 1985 The Archaeological Excavations at Site W-20, Sierra Del Mar. Report on file at the South Coast Information Center.

Stropes, Tracy A.

- 2007 Nodule Industries of North Coastal San Diego: Understanding Change and Stasis in 10,000 Years of Lithic Technology. Submitted to San Diego State University. Thesis/Dissertation on file at SCIC at SDSU.

True, Delbert L.

- 1958 An Early Complex in San Diego County, California. *American Antiquity* 23(3).
- 1966 Archaeological Differentiation of the Shoshonean and Yuman Speaking Groups in Southern California. Unpublished doctoral dissertation, University of California at Los Angeles.
- 1970 Investigations of a Late Prehistoric Complex in Cuyamaca Rancho State Park, San Diego County, California. Archaeological Survey Monograph. University of California, Los Angeles.
- 1980 The Pauma Complex in Northern San Diego County: 1978. *Journal of New World Archaeology* 3(4):1-39.
- 1986 Molpa, a Late Prehistoric Site in Northern San Diego County: The San Luis Rey Complex, 1983. In: Symposium: A New Look at Some Old Sites, edited by Gary S. Breschini and Trudy Haversat, pp. 29-36. Coyote Press, Salinas.

True, D.L. and Eleanor Beemer

- 1982 Two Milling Stone Inventories from Northern San Diego County, California. *Journal of California and Great Basin Anthropology* 4:233-261.

True, D.L. and R. Pankey

- 1985 Radiocarbon Dates for the Pauma Complex Component at the Pankey Site, Northern San Diego County, California. *Journal of California and Great Basin Anthropology* 7:240-244.

Van Dyke, Theodore

- 1886 *Southern California*. Fords, Howard and Hulbert.

Warren, Claude N.

1964 Cultural Change and Continuity on the San Diego Coast. Unpublished Doctoral dissertation on file at the University of California, Los Angeles.

1966 *The San Dieguito Type Site: Malcolm J. Roger's 1938 Excavation on the San Dieguito River*. San Diego Museum Papers (6).

Warren, Claude L., Gretchen Siegler, and Frank Dittmer

1998 Paleoindian and Early Archaic Periods, In *Prehistoric and Historic Archaeology of Metropolitan San Diego: A Historical Properties Background Study (draft)*. Prepared for and on file, ASM Affiliates, Inc., San Diego, California.

Waugh, Georgie

1986 Intensification and Land-use: Archaeological Indication of Transition and Transformation in a Late Prehistoric Complex in Southern California. Unpublished Ph.D. dissertation, Department of Anthropology, University of California, Davis.

Newspapers:

San Diego Union – February 6, 1868

San Diego Union – November 10, 1870

San Diego Union – January 2, 1872

San Diego Union – March 31, 1869

San Diego Union – August 9, 1932

# Brian F. Smith, MA

## Owner, Principal Investigator

Brian F. Smith and Associates, Inc.

14010 Poway Road • Suite A •

Phone: (858) 679-8218 • Fax: (858) 679-9896 • E-Mail: bsmith@bfsa-ca.com



## Education

---

<b>Master of Arts, History, University of San Diego, California</b>	<b>1982</b>
<b>Bachelor of Arts, History, and Anthropology, University of San Diego, California</b>	<b>1975</b>

## Professional Memberships

---

Society for California Archaeology

## Experience

---

<b>Principal Investigator</b> <b>Brian F. Smith and Associates, Inc.</b>	<b>1977–Present</b> <b>Poway, California</b>
---	---

Brian F. Smith is the owner and principal historical and archaeological consultant for Brian F. Smith and Associates. Over the past 32 years, he has conducted over 2,500 cultural resource studies in California, Arizona, Nevada, Montana, and Texas. These studies include every possible aspect of archaeology from literature searches and large-scale surveys to intensive data recovery excavations. Reports prepared by Mr. Smith have been submitted to all facets of local, state, and federal review agencies, including the US Army Corps of Engineers, the Bureau of Land Management, the Bureau of Reclamation, the Department of Defense, and the Department of Homeland Security. In addition, Mr. Smith has conducted studies for utility companies (Sempra Energy) and state highway departments (CalTrans).

## Professional Accomplishments

---

These selected major professional accomplishments represent research efforts that have added significantly to the body of knowledge concerning the prehistoric life ways of cultures once present in the Southern California area and historic settlement since the late 18<sup>th</sup> century. Mr. Smith has been principal investigator on the following select projects, except where noted.

**Downtown San Diego Mitigation and Monitoring Reporting Programs:** Large numbers of downtown San Diego mitigation and monitoring projects submitted to the Centre City Development Corporation, some of which included Strata (2008), Hotel Indigo (2008), Lofts at 707 10<sup>th</sup> Avenue Project (2007), Breeza (2007), Bayside at the Embarcadero (2007), Aria (2007), Icon (2007), Vantage Pointe (2007), Aperture (2007), Sapphire Tower (2007), Lofts at 655 Sixth Avenue (2007), Metrowork (2007), The Legend (2006), The Mark (2006), Smart Corner (2006), Lofts at 677 7<sup>th</sup> Avenue (2005), Aloft on Cortez Hill (2005), Front and



Beech Apartments (2003), Bella Via Condominiums (2003), Acqua Vista Residential Tower (2003), Northblock Lofts (2003), Westin Park Place Hotel (2001), Parkloft Apartment Complex (2001), Renaissance Park (2001), and Laurel Bay Apartments (2001).

Archaeology at the Padres Ballpark: Involved the analysis of historic resources within a seven-block area of the "East Village" area of San Diego, where occupation spanned a period from the 1870s to the 1940s. Over a period of two years, BFSA recovered over 200,000 artifacts and hundreds of pounds of metal, construction debris, unidentified broken glass, and wood. Collectively, the Ballpark Project and the other downtown mitigation and monitoring projects represent the largest historical archaeological program anywhere in the country in the past decade (2000-2007).

4S Ranch Archaeological and Historical Cultural Resources Study: Data recovery program consisted of the excavation of over 2,000 square meters of archaeological deposits that produced over one million artifacts, containing primarily prehistoric materials. The archaeological program at 4S Ranch is the largest archaeological study ever undertaken in the San Diego County area and has produced data that has exceeded expectations regarding the resolution of long-standing research questions and regional prehistoric settlement patterns.

Charles H. Brown Site: Attracted international attention to the discovery of evidence of the antiquity of man in North America. Site located in Mission Valley, in the city of San Diego.

Del Mar Man Site: Study of the now famous Early Man Site in Del Mar, California, for the San Diego Science Foundation and the San Diego Museum of Man, under the direction of Dr. Spencer Rogers and Dr. James R. Moriarty.

Old Town State Park Projects: Consulting Historical Archaeologist. Projects completed in the Old Town State Park involved development of individual lots for commercial enterprises. The projects completed in Old Town include Archaeological and Historical Site Assessment for the Great Wall Cafe (1992), Archaeological Study for the Old Town Commercial Project (1991), and Cultural Resources Site Survey at the Old San Diego Inn (1988).

Site W-20, Del Mar, California: A two-year-long investigation of a major prehistoric site in the Del Mar area of the city of San Diego. This research effort documented the earliest practice of religious/ceremonial activities in San Diego County (circa 6,000 years ago), facilitated the projection of major non-material aspects of the La Jolla Complex, and revealed the pattern of civilization at this site over a continuous period of 5,000 years. The report for the investigation included over 600 pages, with nearly 500,000 words of text, illustrations, maps, and photographs documenting this major study.

City of San Diego Reclaimed Water Distribution System: A cultural resource study of nearly 400 miles of pipeline in the city and county of San Diego.

Master Environmental Assessment Project, City of Poway: Conducted for the City of Poway to produce a complete inventory of all recorded historic and prehistoric properties within the city. The information was used in conjunction with the City's General Plan Update to produce a map matrix of the city showing areas of high, moderate, and low potential for the presence of cultural resources. The effort also included the development of the City's Cultural Resource Guidelines, which were adopted as City policy.

Draft of the City of Carlsbad Historical and Archaeological Guidelines: Contracted by the City of Carlsbad to produce the draft of the City's historical and archaeological guidelines for use by the Planning Department of the City.

The Mid-Bayfront Project for the City of Chula Vista: Involved a large expanse of undeveloped agricultural land situated between the railroad and San Diego Bay in the northwestern portion of the city. The study included the analysis of some potentially historic features and numerous prehistoric sites.

Cultural Resources Survey and Test of Sites Within the Proposed Development of the Audie Murphy Ranch, Riverside County, California: Project manager/director of the investigation of 1,113.4 acres and 43 sites, both prehistoric and historic—including project coordination; direction of field crews; evaluation of sites for significance based on County of Riverside and CEQA guidelines; assessment of cupule, pictograph, and rock shelter sites, co-authoring of cultural resources project report. February-September 2002.

Cultural Resources Evaluation of Sites Within the Proposed Development of the Otay Ranch Village 13 Project, San Diego County, California: Project manager/director of the investigation of 1,947 acres and 76 sites, both prehistoric and historic—including project coordination and budgeting; direction of field crews; assessment of sites for significance based on County of San Diego and CEQA guidelines; co-authoring of cultural resources project report. May-November 2002.

Cultural Resources Survey for the Remote Video Surveillance Project, El Centro Sector, Imperial County: Project manager/director for a survey of 29 individual sites near the U.S./Mexico Border for proposed video surveillance camera locations associated with the San Diego Border barrier Project—project coordination and budgeting; direction of field crews; site identification and recordation; assessment of potential impacts to cultural resources; meeting and coordinating with U.S. Army Corps of Engineers, U.S. Border Patrol, and other government agencies involved; co-authoring of cultural resources project report. January, February, and July 2002.

Cultural Resources Survey and Test of Sites Within the Proposed Development of the Menifee West GPA, Riverside County, California: Project manager/director of the investigation of nine sites, both prehistoric and historic—including project coordination and budgeting; direction of field crews; assessment of sites for significance based on County of Riverside and CEQA guidelines; historic research; co-authoring of cultural resources project report. January-March 2002.

Mitigation of An Archaic Cultural Resource for the Eastlake III Woods Project for the City of Chula Vista, California: Project archaeologist/ director—including direction of field crews; development and completion of data recovery program including collection of material for specialized faunal and botanical analyses; assessment of sites for significance based on CEQA guidelines; management of artifact collections cataloging and curation; data synthesis; co-authoring of cultural resources project report, in prep. September 2001-March 2002.

Cultural Resources Survey and Test of Sites Within the Proposed French Valley Specific Plan/EIR, Riverside County, California: Project manager/director of the investigation of two prehistoric and three historic sites—including project coordination and budgeting; survey of project area; Native American consultation; direction of field crews; assessment of sites for significance based on CEQA guidelines; cultural resources project report in prep. July-August 2000.

Cultural Resources Survey and Test of Sites Within the Proposed Lawson Valley Project, San Diego County, California: Project manager/director of the investigation of 28 prehistoric and two historic sites—including project coordination; direction of field crews; assessment of sites for significance based on CEQA guidelines; cultural resources project report in prep. July-August 2000.

Cultural Resource Survey and Geotechnical Monitoring for the Mohyi Residence Project, La Jolla, California: Project manager/director of the investigation of a single-dwelling parcel—including project coordination; field survey; assessment of parcel for potentially buried cultural deposits; monitoring of geotechnical borings; authoring of cultural resources project report. Brian F. Smith and Associates, San Diego, California. June 2000.

Enhanced Cultural Resource Survey and Evaluation for the Prewitt/Schmucker/Cavadias Project, La Jolla, California: Project manager/director of the investigation of a single-dwelling parcel—including project coordination; direction of field crews; assessment of parcel for potentially buried cultural deposits; authoring of cultural resources project report. June 2000.

Cultural Resources Survey and Test of Sites Within the Proposed Development of the Menifee Ranch, Riverside County, California: Project manager/director of the investigation of one prehistoric and five historic sites—included project coordination and budgeting; direction of field crews; feature recordation; historic structure assessments; assessment of sites for significance based on CEQA guidelines; historic research; co-authoring of cultural resources project report. February-June 2000.

Salvage Mitigation of a Portion of the San Diego Presidio Identified During Water Pipe Construction for the City of San Diego, California: Project archaeologist/director—included direction of field crews; development and completion of data recovery program; management of artifact collections cataloging and curation; data synthesis and authoring of cultural resources project report in prep. April 2000.

Enhanced Cultural Resource Survey and Evaluation for the Tyrian 3 Project, La Jolla, California: Project manager/director of the investigation of a single-dwelling parcel—included project coordination; assessment of parcel for potentially buried cultural deposits; authoring of cultural resources project report. April 2000.

Enhanced Cultural Resource Survey and Evaluation for the Lamont 5 Project, Pacific Beach, California: Project manager/director of the investigation of a single-dwelling parcel—included project coordination; assessment of parcel for potentially buried cultural deposits; authoring of cultural resources project report. April 2000.

Enhanced Cultural Resource Survey and Evaluation for the Reiss Residence Project, La Jolla, California: Project manager/director of the investigation of a single-dwelling parcel—included project coordination; assessment of parcel for potentially buried cultural deposits; authoring of cultural resources project report. March-April 2000.

Salvage Mitigation of a Portion of Site SDM-W-95 (CA-SDI-211) for the Poinsettia Shores Santalina Development Project and Caltrans, Carlsbad, California: Project archaeologist/ director—included direction of field crews; development and completion of data recovery program; management of artifact collections cataloging and curation; data synthesis and authoring of cultural resources project report in prep. December 1999-January 2000.

Survey and Testing of Two Prehistoric Cultural Resources for the Airway Truck Parking Project, Otay Mesa, California: Project archaeologist/director—included direction of field crews; development and completion of testing recovery program; assessment of site for significance based on CEQA guidelines; authoring of cultural resources project report, in prep. December 1999-January 2000.

Cultural Resources Phase I and II Investigations for the Tin Can Hill Segment of the Immigration and Naturalization Services Triple Fence Project Along the International Border, San Diego County, California: Project manager/director for a survey and testing of a prehistoric quarry site along the border—NRHP eligibility assessment; project coordination and budgeting; direction of field crews; feature recordation; meeting and coordinating with U.S. Army Corps of Engineers; co-authoring of cultural resources project report. December 1999-January 2000.

Mitigation of a Prehistoric Cultural Resource for the Westview High School Project for the City of San Diego, California: Project archaeologist/ director—included direction of field crews; development and completion of data recovery program including collection of material for specialized faunal and botanical analyses; assessment of sites for significance based on CEQA guidelines; management of artifact collections cataloging and curation; data synthesis; co-authoring of cultural resources project report, in prep. October 1999-January 2000.

Mitigation of a Prehistoric Cultural Resource for the Otay Ranch SPA-One West Project for the City of Chula Vista, California: Project archaeologist/director—included direction of field crews; development of data recovery program; management of artifact collections cataloging and curation; assessment of

site for significance based on CEQA guidelines; data synthesis; authoring of cultural resources project report, in prep. September 1999-January 2000.

Monitoring of Grading for the Herschel Place Project, La Jolla, California: Project archaeologist/monitor—included monitoring of grading activities associated with the development of a single-dwelling parcel. September 1999.

Survey and Testing of a Historic Resource for the Osterkamp Development Project, Valley Center, California: Project archaeologist/ director—included direction of field crews; development and completion of data recovery program; budget development; assessment of site for significance based on CEQA guidelines; management of artifact collections cataloging and curation; data synthesis; authoring of cultural resources project report. July-August 1999.

Survey and Testing of a Prehistoric Cultural Resource for the Proposed College Boulevard Alignment Project, Carlsbad, California: Project manager/director —included direction of field crews; development and completion of testing recovery program; assessment of site for significance based on CEQA guidelines; management of artifact collections cataloging and curation; data synthesis; authoring of cultural resources project report, in prep. July-August 1999.

Survey and Evaluation of Cultural Resources for the Palomar Christian Conference Center Project, Palomar Mountain, California: Project archaeologist—included direction of field crews; assessment of sites for significance based on CEQA guidelines; management of artifact collections cataloging and curation; data synthesis; authoring of cultural resources project report. July-August 1999.

Survey and Evaluation of Cultural Resources at the Village 2 High School Site, Otay Ranch, City of Chula Vista, California: Project manager/director —management of artifact collections cataloging and curation; assessment of site for significance based on CEQA guidelines; data synthesis; authoring of cultural resources project report. July 1999.

Cultural Resources Phase I, II, and III Investigations for the Immigration and Naturalization Services Triple Fence Project Along the International Border, San Diego County, California: Project manager/director for the survey, testing, and mitigation of sites along border—supervision of multiple field crews, NRHP eligibility assessments, Native American consultation, contribution to Environmental Assessment document, lithic and marine shell analysis, authoring of cultural resources project report. August 1997-January 2000.

Phase I, II, and III Investigations for the Scripps Poway Parkway East Project, Poway California: Project archaeologist/project director—included recordation and assessment of multicomponent prehistoric and historic sites; direction of Phase II and III investigations; direction of laboratory analyses including prehistoric and historic collections; curation of collections; data synthesis; coauthorship of final cultural resources report. February 1994; March-September 1994; September-December 1995.

Archaeological Evaluation of Cultural Resources Within the Proposed Corridor for the San Elijo Water Reclamation System Project, San Elijo, California: Project manager/director —test excavations; direction of artifact identification and analysis; graphics production; coauthorship of final cultural resources report. December 1994-July 1995.

Evaluation of Cultural Resources for the Environmental Impact Report for the Rose Canyon Trunk Sewer Project, San Diego, California: Project manager/Director —direction of test excavations; identification and analysis of prehistoric and historic artifact collections; data synthesis; co-authorship of final cultural resources report, San Diego, California. June 1991-March 1992.

## Reports/Papers

---

Author, coauthor, or contributor to over 2,500 cultural resources management publications, a selection of which are presented below.

- 2015 An Archaeological/Historical Study for the Safari Highlands Ranch Project, City of Escondido, County of San Diego.
- 2015 A Phase I and II Cultural Resources Assessment for the Decker Parcels II Project, Planning Case No. 36962, Riverside County, California.
- 2015 A Phase I and II Cultural Resources Assessment for the Decker Parcels I Project, Planning Case No. 36950, Riverside County, California.
- 2015 Cultural Resource Data Recovery and Mitigation Monitoring Program for Site SDI-10,237 Locus F, Everly Subdivision Project, El Cajon, California.
- 2015 Phase I Cultural Resource Survey for the Woodward Street Senior Housing Project, City of San Marcos, California (APN 218-120-31).
- 2015 An Updated Cultural Resource Survey for the Box Springs Project (TR 33410), APNs 255-230-010, 255-240-005, 255-240-006, and Portions of 257-180-004, 257-180-005, and 257-180-006.
- 2015 A Phase I and II Cultural Resource Report for the Lake Ranch Project, TR 36730, Riverside County, California.
- 2015 A Phase II Cultural Resource Assessment for the Munro Valley Solar Project, Inyo County, California.
- 2014 Cultural Resources Monitoring Report for the Diamond Valley Solar Project, Community of Winchester, County of Riverside.
- 2014 National Historic Preservation Act Section 106 Compliance for the Proposed Saddleback Estates Project, Riverside County, California.
- 2014 A Phase II Cultural Resource Evaluation Report for RIV-8137 at the Toscana Project, TR 36593, Riverside County, California.
- 2014 Cultural Resources Study for the Estates at Del Mar Project, City of Del Mar, San Diego, California (TTM 14-001).
- 2014 Cultural Resources Study for the Aliso Canyon Major Subdivision Project, Rancho Santa Fe, San Diego County, California.
- 2014 Cultural Resources Due Diligence Assessment of the Ocean Colony Project, City of Encinitas.
- 2014 A Phase I and Phase II Cultural Resource Assessment for the Citrus Heights II Project, TTM 36475, Riverside County, California.
- 2013 A Phase I Cultural Resource Assessment for the Modular Logistics Center, Moreno Valley, Riverside County, California.

- 2013 A Phase I Cultural Resources Survey of the Ivey Ranch Project, Thousand Palms, Riverside County, California.
- 2013 Cultural Resources Report for the Emerald Acres Project, Riverside County, California.
- 2013 A Cultural Resources Records Search and Review for the Pala Del Norte Conservation Bank Project, San Diego County, California.
- 2013 An Updated Phase I Cultural Resources Assessment for Tentative Tract Maps 36484 and 36485, Audie Murphy Ranch, City of Menifee, County of Riverside.
- 2013 El Centro Town Center Industrial Development Project (EDA Grant No. 07-01-06386); Result of Cultural Resource Monitoring.
- 2013 Cultural Resources Survey Report for the Renda Residence Project, 9521 La Jolla Farms Road, La Jolla, California.
- 2013 A Phase I Cultural Resource Study for the Ballpark Village Project, San Diego, California.
- 2013 Archaeological Monitoring and Mitigation Program, San Clemente Senior Housing Project, 2350 South El Camino Real, City of San Clemente, Orange County, California (CUP No. 06-065; APN-060-032-04).
- 2012 Mitigation Monitoring Report for the Los Peñasquitos Recycled Water Pipeline.
- 2012 Cultural Resources Report for Menifee Heights (Tract 32277).
- 2012 A Phase I Cultural Resource Study for the Altman Residence at 9696 La Jolla Farms Road, La Jolla, California 92037.
- 2012 Mission Ranch Project (TM 5290-1/MUP P87-036W3): Results of Cultural Resources Monitoring During Mass Grading.
- 2012 A Phase I Cultural Resource Study for the Payan Property Project, San Diego, California.
- 2012 Phase I Archaeological Survey of the Rieger Residence, 13707 Durango Drive, Del Mar, California 92014, APN 300-369-49.
- 2011 Mission Ranch Project (TM 5290-1/MUP P87-036W3): Results of Cultural Resources Monitoring During Mass Grading.
- 2011 Mitigation Monitoring Report for the 1887 Viking Way Project, La Jolla, California.
- 2011 Cultural Resource Monitoring Report for the Sewer Group 714 Project.
- 2011 Results of Archaeological Monitoring at the 10th Avenue Parking Lot Project, City of San Diego, California (APNs 534-194-02 and 03).
- 2011 Archaeological Survey of the Pelberg Residence for a Bulletin 560 Permit Application; 8335 Camino Del Oro; La Jolla, California 92037 APN 346-162-01-00 .
- 2011 A Cultural Resources Survey Update and Evaluation for the Robertson Ranch West Project and an Evaluation of National Register Eligibility of Archaeological sites for Sites for Section 106 Review (NHPA).
- 2011 Mitigation Monitoring Report for the 43rd and Logan Project.

- 2011 Mitigation Monitoring Report for the Sewer Group 682 M Project, City of San Diego Project #174116.
- 2011 A Phase I Cultural Resource Study for the Nooren Residence Project, 8001 Calle de la Plata, La Jolla, California, Project No. 226965.
- 2011 A Phase I Cultural Resource Study for the Keating Residence Project, 9633 La Jolla Farms Road, La Jolla, California 92037.
- 2010 Mitigation Monitoring Report for the 15th & Island Project, City of San Diego; APNs 535-365-01, 535-365-02 and 535-392-05 through 535-392-07.
- 2010 Archaeological Resource Report Form: Mitigation Monitoring of the Sewer and Water Group 772 Project, San Diego, California, W.O. Nos. 187861 and 178351.
- 2010 Pottery Canyon Site Archaeological Evaluation Project, City of San Diego, California, Contract No. H105126.
- 2010 Archaeological Resource Report Form: Mitigation Monitoring of the Racetrack View Drive Project, San Diego, California; Project No. 163216.
- 2010 A Historical Evaluation of Structures on the Butterfield Trails Property.
- 2010 Historic Archaeological Significance Evaluation of 1761 Haydn Drive, Encinitas, California (APN 260-276-07-00).
- 2010 Results of Archaeological Monitoring of the Heller/Nguyen Project, TPM 06-01, Poway, California.
- 2010 Cultural Resource Survey and Evaluation Program for the Sunday Drive Parcel Project, San Diego County, California, APN 189-281-14.
- 2010 Archaeological Resource Report Form: Mitigation Monitoring of the Emergency Garnet Avenue Storm Drain Replacement Project, San Diego, California, Project No. B10062
- 2010 An Archaeological Study for the 1912 Spindrift Drive Project
- 2009 Cultural Resource Assessment of the North Ocean Beach Gateway Project City of San Diego #64A-003A; Project #154116.
- 2009 Archaeological Constraints Study of the Morgan Valley Wind Assessment Project, Lake County, California.
- 2008 Results of an Archaeological Review of the Helen Park Lane 3.1-acre Property (APN 314-561-31), Poway, California.
- 2008 Archaeological Letter Report for a Phase I Archaeological Assessment of the Valley Park Condominium Project, Ramona, California; APN 282-262-75-00.
- 2007 Archaeology at the Ballpark. Brian F. Smith and Associates, San Diego, California. Submitted to the Centre City Development Corporation.
- 2007 Result of an Archaeological Survey for the Villages at Promenade Project (APNs 115-180-007-3, 115-180-049-1, 115-180-042-4, 115-180-047-9) in the City of Corona, Riverside County.
- 2007 Monitoring Results for the Capping of Site CA-SDI-6038/SDM-W-5517 within the Katzer Jamul Center Project; P00-017.
- 2006 Archaeological Assessment for The Johnson Project (APN 322-011-10), Poway, California.

- 2005 Results of Archaeological Monitoring at the El Camino Del Teatro Accelerated Sewer Replacement Project (Bid No. K041364; WO # 177741; CIP # 46-610.6.
- 2005 Results of Archaeological Monitoring at the Baltazar Draper Avenue Project (Project No. 15857; APN: 351-040-09).
- 2004 TM 5325 ER #03-14-043 Cultural Resources.
- 2004 An Archaeological Survey and an Evaluation of Cultural Resources at the Salt Creek Project. Report on file at Brian F. Smith and Associates.
- 2003 An Archaeological Assessment for the Hidden Meadows Project, San Diego County, TM 5174, Log No. 99-08-033. Report on file at Brian F. Smith and Associates.
- 2003 An Archaeological Survey for the Manchester Estates Project, Coastal Development Permit #02-009, Encinitas, California. Report on file at Brian F. Smith and Associates.
- 2003 Archaeological Investigations at the Manchester Estates Project, Coastal Development Permit #02-009, Encinitas, California. Report on file at Brian F. Smith and Associates.
- 2003 Archaeological Monitoring of Geological Testing Cores at the Pacific Beach Christian Church Project. Report on file at Brian F. Smith and Associates.
- 2003 San Juan Creek Drilling Archaeological Monitoring. Report on file at Brian F. Smith and Associates.
- 2003 Evaluation of Archaeological Resources Within the Spring Canyon Biological Mitigation Area, Otay Mesa, San Diego County, California. Brian F. Smith and Associates, San Diego, California.
- 2002 An Archaeological/Historical Study for the Otay Ranch Village 13 Project (et al.). Brian F. Smith and Associates, San Diego, California.
- 2002 An Archaeological/Historical Study for the Audie Murphy Ranch Project (et al.). Brian F. Smith and Associates, San Diego, California.
- 2002 Results of an Archaeological Survey for the Remote Video Surveillance Project, El Centro Sector, Imperial County, California. Brian F. Smith and Associates, San Diego, California.
- 2002 A Cultural Resources Survey and Evaluation for the Proposed Robertson Ranch Project, City of Carlsbad. Brian F. Smith and Associates, San Diego, California.
- 2002 Archaeological Mitigation of Impacts to Prehistoric Site SDI-7976 for the Eastlake III Woods Project, Chula Vista, California. Brian F. Smith and Associates, San Diego, California.
- 2002 An Archaeological/Historical Study for Tract No. 29777, Menifee West GPA Project, Perris Valley, Riverside County. Brian F. Smith and Associates, San Diego, California.
- 2002 An Archaeological/Historical Study for Tract No. 29835, Menifee West GPA Project, Perris Valley, Riverside County. Brian F. Smith and Associates, San Diego, California.
- 2001 An Archaeological Survey and Evaluation of a Cultural Resource for the Moore Property, Poway. Brian F. Smith and Associates, San Diego, California.
- 2001 An Archaeological Report for the Mitigation, Monitoring, and Reporting Program at the Water and Sewer Group Job 530A, Old Town San Diego. Brian F. Smith and Associates, San Diego, California.



- 2001 A Cultural Resources Impact Survey for the High Desert Water District Recharge Site 6 Project, Yucca Valley. Brian F. Smith and Associates, San Diego, California.
- 2001 Archaeological Mitigation of Impacts to Prehistoric Site SDI-13,864 at the Otay Ranch SPA-One West Project. Brian F. Smith and Associates, San Diego, California.
- 2001 A Cultural Resources Survey and Site Evaluations at the Stewart Subdivision Project, Moreno Valley, County of San Diego. Brian F. Smith and Associates, San Diego, California.
- 2000 An Archaeological/Historical Study for the French Valley Specific Plan/EIR, French Valley, County of Riverside. Brian F. Smith and Associates, San Diego, California.
- 2000 Results of an Archaeological Survey and the Evaluation of Cultural Resources at The TPM#24003–Lawson Valley Project. Brian F. Smith and Associates, San Diego, California.
- 2000 Archaeological Mitigation of Impacts to Prehistoric Site SDI-5326 at the Westview High School Project for the Poway Unified School District. Brian F. Smith and Associates, San Diego, California.
- 2000 An Archaeological/Historical Study for the Menifee Ranch Project. Brian F. Smith and Associates, San Diego, California.
- 2000 An Archaeological Survey and Evaluation of Cultural Resources for the Bernardo Mountain Project, Escondido, California. Brian F. Smith and Associates, San Diego, California.
- 2000 A Cultural Resources Impact Survey for the Nextel Black Mountain Road Project, San Diego, California. Brian F. Smith and Associates, San Diego, California.
- 2000 A Cultural Resources Impact Survey for the Rancho Vista Project, 740 Hilltop Drive, Chula Vista, California. Brian F. Smith and Associates, San Diego, California.
- 2000 A Cultural Resources Impact Survey for the Poway Creek Project, Poway, California. Brian F. Smith and Associates, San Diego, California.
- 2000 Cultural Resource Survey and Geotechnical Monitoring for the Mohyi Residence Project. Brian F. Smith and Associates, San Diego, California.
- 2000 Enhanced Cultural Resource Survey and Evaluation for the Prewitt/Schmucker/ Cavadias Project. Brian F. Smith and Associates, San Diego, California.
- 2000 Enhanced Cultural Resource Survey and Evaluation for the Lamont 5 Project. Brian F. Smith and Associates, San Diego, California.
- 2000 Salvage Excavations at Site SDM-W-95 (CA-SDI-211) for the Poinsettia Shores Santalina Development Project, Carlsbad, California. Brian F. Smith and Associates, San Diego, California.
- 2000 Enhanced Cultural Resource Survey and Evaluation for the Reiss Residence Project, La Jolla, California. Brian F. Smith and Associates, San Diego, California.
- 2000 Enhanced Cultural Resource Survey and Evaluation for the Tyrian 3 Project, La Jolla, California. Brian F. Smith and Associates, San Diego, California.
- 2000 A Report for an Archaeological Evaluation of Cultural Resources at the Otay Ranch Village Two SPA, Chula Vista, California. Brian F. Smith and Associates, San Diego, California.
- 2000 An Archaeological Evaluation of Cultural Resources for the Airway Truck Parking Project, Otay Mesa, County of San Diego. Brian F. Smith and Associates, San Diego, California.

- 2000 Results of an Archaeological Survey and Evaluation of a Resource for the Tin Can Hill Segment of the Immigration and Naturalization and Immigration Service Border Road, Fence, and Lighting Project, San Diego County, California. Brian F. Smith and Associates, San Diego, California.
- 1999 An Archaeological Survey of the Home Creek Village Project, 4600 Block of Home Avenue, San Diego, California. Brian F. Smith and Associates, San Diego, California.
- 1999 An Archaeological Survey for the Sgobassi Lot Split, San Diego County, California. Brian F. Smith and Associates, San Diego, California.
- 1999 An Evaluation of Cultural Resources at the Otay Ranch Village 11 Project. Brian F. Smith and Associates, San Diego, California.
- 1999 An Archaeological/Historical Survey and Evaluation of a Cultural Resource for The Osterkamp Development Project, Valley Center, California. Brian F. Smith and Associates, San Diego, California.
- 1999 An Archaeological Survey and Evaluation of Cultural Resources for the Palomar Christian Conference Center Project, Palomar Mountain, California. Brian F. Smith and Associates, San Diego, California.
- 1999 An Archaeological Survey and Evaluation of a Cultural Resource for the Proposed College Boulevard Alignment Project. Brian F. Smith and Associates, San Diego, California.
- 1999 Results of an Archaeological Evaluation for the Anthony's Pizza Acquisition Project in Ocean Beach, City of San Diego (with L. Pierson and B. Smith). Brian F. Smith and Associates, San Diego, California.
- 1996 An Archaeological Testing Program for the Scripps Poway Parkway East Project. Brian F. Smith and Associates, San Diego, California.
- 1995 Results of a Cultural Resources Study for the 4S Ranch. Brian F. Smith and Associates, San Diego, California.
- 1995 Results of an Archaeological Evaluation of Cultural Resources Within the Proposed Corridor for the San Elijo Water Reclamation System. Brian F. Smith and Associates, San Diego, California.
- 1994 Results of the Cultural Resources Mitigation Programs at Sites SDI-11,044/H and SDI-12,038 at the Salt Creek Ranch Project. Brian F. Smith and Associates, San Diego, California.
- 1993 Results of an Archaeological Survey and Evaluation of Cultural Resources at the Stallion Oaks Ranch Project. Brian F. Smith and Associates, San Diego, California.
- 1992 Results of an Archaeological Survey and the Evaluation of Cultural Resources at the Ely Lot Split Project. Brian F. Smith and Associates, San Diego, California.
- 1991 The Results of an Archaeological Study for the Walton Development Group Project. Brian F. Smith and Associates, San Diego, California.

# Jennifer R.K. Stropes, MS, RPA

Project Archaeologist/Historian

Brian F. Smith and Associates, Inc.

14010 Poway Road • Suite A •

Phone: (858) 484-0915 • Fax: (858) 679-9896 • E-Mail: jenni@bfsa-ca.com



## Education

---

**Master of Science, Cultural Resource Management Archaeology** **2016**

St. Cloud State University, St. Cloud, Minnesota

**Bachelor of Arts, Anthropology** **2004**

University of California, Santa Cruz

## Specialized Education/Training

---

**Archaeological Field School** **2014**

Pimu Catalina Island Archaeology Project

## Research Interests

---

California Coastal / Inland Archaeology

Zooarchaeology

Historic Structure Significance Eligibility

Historical Archaeology

Human Behavioral Ecology

Taphonomic Studies

## Experience

---

**Project Archaeologist, Faunal Analyst**

**November 2006–Present**

**Brian F. Smith and Associates, Inc.**

Duties include report writing, editing and production; construction monitoring management; coordination of field survey and excavation crews; laboratory and office management. Currently conducts faunal, prehistoric, and historic laboratory analysis and has conducted such analysis for over 500 projects over the past 10 years. Knowledgeable in the most recent archaeological and paleontological monitoring requirements for all Southern California lead agencies, as well as Native American monitoring requirements.

**UC Santa Cruz Monterey Bay Archaeology Archives Supervisor  
Santa Cruz, California**

**December 2003–March 2004**

Supervising intern for archaeological collections housed at UC Santa Cruz. Supervised undergraduate interns and maintained curated archaeological materials recovered from the greater Monterey Bay region.

**Faunal Analyst, Research Assistant  
University of California, Santa Cruz**

**June 2003–December 2003**

Intern assisting in laboratory analysis and cataloging for faunal remains collected from CA-MNT-234. Analysis included detailed zoological identification and taphonomic analysis of prehistoric marine and terrestrial mammals, birds, and fish inhabiting the greater Monterey Bay region.

**Archaeological Technician, Office Manager  
Archaeological Resource Management**

**January 2000–December 2001**

Conducted construction monitoring, field survey, excavation, report editing, report production, monitoring coordination and office management.

## **Certifications**

---

City of San Diego Certified Archaeological and Paleontological Monitor

40-Hour Hazardous Waste/Emergency Response OSHA 29 CFR 1910.120 (e)

## **Scholarly Works**

---

*Big Game, Small Game: A Comprehensive Analysis of Faunal Remains Recovered from CA-SDI-11,521*, 2016, Master's thesis on file at St. Cloud University, St. Cloud, Minnesota.

## **Technical Reports**

---

Buday, Tracy M., Jennifer R. **Kraft**, and Brian F. Smith

2014 *Mitigation Monitoring Report for the Park and G Project, City of San Diego*. Prepared for Oliver McMillan. Report on file at the California South Coastal Information Center.

Kennedy, George L., Todd A. Wirths and Jennifer R. **Kraft**

2014 *Negative Paleontological, Archaeological, and Native American Monitoring and Mitigation Report, 2303 Ocean Street Residences Project, City of Carlsbad, San Diego County, California (CT 05-12; CP 05-11; CDP 05-28)*. Prepared for Zephyr Partners. Report on file at the California South Coastal Information Center.

2013 *Negative Paleontological, Archaeological, and Native American Monitoring and Mitigation Report, Tri-City Christian High School, 302 North Emerald Drive, Vista, San Diego County*,

*California (APN 166-411-75).* Prepared for Tri-City Christian School. Report on file at the California South Coastal Information Center.

Kraft, Jennifer R.

2012 *Cultural Resources Monitoring Report for the Pottery Court Project (TPM 36193) City of Lake Elsinore.* Prepared for BRIDGE Housing Corporation. Report on file at the California Eastern Information Center.

Kraft, Jennifer R., David K. Grabski, and Brian F. Smith

2014 *Phase I Cultural Resource Survey for the Amineh Project, City of San Diego.* Prepared for Nakhshab Development and Design. Report on file at the California South Coastal Information Center.

Kraft, Jennifer R. and Brian F. Smith

2016 *Cultural Resources Survey and Archaeological Test Plan for the 1492 K Street Project City of San Diego.* Prepared for Trestle Development, LLC. Report on file at the California South Coastal Information Center.

2016 *Focused Historic Structure Assessment for the Fredericka Manor Retirement Community City of Chula Vista, San Diego County, California APN 566-240-27.* Prepared for Front Porch Communities and Services – Fredericka Manor, LLC. Report on file at the City of Chula Vista Planning Department.

2016 *Historic Structure Assessment for 8585 La Mesa Boulevard City of La Mesa, San Diego County, California. APN 494-300-11.* Prepared for Siilvergate Development. Report on file at the City of La Mesa Planning Department.

2016 *Phase I Cultural Resource Survey for the 9036 La Jolla Shores Lane Project City of San Diego Project No. 471873 APN 344-030-20.* Prepared for Eliza and Stuart Stedman. Report on file at the California South Coastal Information Center.

2016 *Phase I Cultural Resources Survey for the Beacon Apartments Project City of San Diego Civic San Diego Development Permit #2016-19 APN 534-210-12.* Prepared for Wakeland Housing & Development Corporation. Report on file at the California South Coastal Information Center.

2016 *A Phase I Cultural Resources Study for the State/Columbia/Ash/A Block Project San Diego, California.* Prepared for Bomel San Diego Equities, LLC. Report on file at the California South Coastal Information Center.

2015 *Cultural Resource Monitoring Report for the Sewer and Water Group 687B Project, City of San Diego.* Prepared for Ortiz Corporation. Report on file at the California South Coastal Information Center.

2015 *Cultural Resource Testing Results for the Broadway and Pacific Project, City of San Diego.* Prepared for BOSA Development California, Inc. Report on file at the California South Coastal Information Center.

2015 *Cultural Resource Study for the Hatfield Plaza Project, Valley Center, San Diego County, California.* Prepared for JG Consulting & Engineering. Report on file at the California South Coastal Information Center.

- 2015 *Cultural Resources Study for the Hedrick Residence Project, Encinitas, San Diego County, California.* Prepared for WNC General Contractors, Inc. Report on file at the California South Coastal Information Center.
- 2015 *Historic Structure Assessment for the StorQuest Project, City of La Mesa, (APN 494-101-14-00).* Prepared for Real Estate Development and Entitlement. Report on file at the City of La Mesa.
- 2015 *Mitigation Monitoring Report for the 1905 Spindrift Remodel Project, La Jolla, California.* Prepared for Brian Malk and Nancy Heitel. Report on file at the California South Coastal Information Center.
- 2015 *Mitigation Monitoring Report for the Cisterra Sempra Office Tower Project, City of San Diego.* Prepared for SDG-Left Field, LLC. Report on file at the California South Coastal Information Center.
- 2015 *A Phase I Cultural Resource Study for the Marlow Project, Poway, California.* Prepared for Peter Marlow. Report on file at the California South Coastal Information Center.
- 2015 *Phase I Cultural Resource Survey for the Paseo Grande Project, City of San Diego.* Prepared for Joe Gatto. Report on file at the California South Coastal Information Center.
- 2015 *Results of a Cultural Resources Testing Program for the 15<sup>th</sup> and Island Project City of San Diego.* Prepared for Lennar Multifamily Communities. Report on file at the City of San Diego Development Services Department.
- 2014 *Cultural Resource Monitoring Report for the ActivCare at Mission Bay Project, San Diego, California.* Prepared for ActivCare Living, Inc. Report on file at the California South Coastal Information Center.
- 2014 *Cultural Resource Monitoring Report for the Cesar Chavez Community College Project.* Prepared for San Diego Community College District. Report on file at the California South Coastal Information Center.
- 2014 *Cultural Resource Monitoring Report for the Grantville Trunk Sewer Project, City of San Diego.* Prepared for Cass Construction, Inc. Report on file at the California South Coastal Information Center.
- 2014 *Cultural Resource Monitoring Report for the Pacific Beach Row Homes Project, San Diego, California.* Prepared for Armstrong Builders, Inc. Report on file at the California South Coastal Information Center.
- 2014 *Cultural Resource Monitoring Report for the Poway Lowe's Project, City of Poway.* Prepared for CSI Construction Company. Report on file at the California South Coastal Information Center.
- 2014 *Cultural Resource Monitoring Report for the Sewer and Water Group 761 Project, City of San Diego.* Prepared for Burtech Pipeline. Report on file at the California South Coastal Information Center.
- 2014 *Cultural Resource Monitoring Report for the Sewer and Water Group 770 Project (Part of Group 3014), City of San Diego.* Prepared for Ortiz Corporation. Report on file at the California South Coastal Information Center.

- 2014 *Cultural Resource Monitoring Report for the Sewer and Water Group 788 Project, City of San Diego.* Prepared for Ortiz Corporation. Report on file at the California South Coastal Information Center.
- 2014 *Historic Structure Assessment, 11950 El Hermano Road, Riverside County.* Prepared for Forestar Toscana, LLC. Report on file at the California Eastern Information Center.
- 2014 *Historic Structure Assessment, 161 West San Ysidro Boulevard, San Diego, California (Project No. 342196; APN 666-030-09).* Prepared for Blue Key Realty. Report on file at the California South Coastal Information Center.
- 2014 *Historic Structure Assessment for 8055 La Mesa Boulevard, City of La Mesa (APN 470-582-11-00).* Prepared for Lee Machado. Report on file at the City of La Mesa.
- 2014 *Historic Structure Inventory and Assessment Program for the Watson Corporate Center, San Bernardino County, California.* Prepared for Watson Land Company. Report on file at the San Bernardino Archaeological Information Center.
- 2014 *Mitigation Monitoring Report for the Celadon (9<sup>th</sup> and Broadway) Project.* Prepared for BRIDGE Housing Corporation. Report on file at the California South Coastal Information Center.
- 2014 *Mitigation Monitoring Report for the Comm 22 Project, City of San Diego.* Prepared for BRIDGE Housing Corporation. Report on file at the California South Coastal Information Center.
- 2014 *Mitigation Monitoring Report for the Pinnacle 15<sup>th</sup> & Island Project, City of San Diego.* Prepared for Pinnacle International Development, Inc. Report on file at the California South Coastal Information Center.
- 2014 *A Phase I and II Cultural Resource Study for the Perris Residential Project, Perris, California.* Prepared for Groundwurk, Inc. Report on file at the California Eastern Information Center.
- 2014 *Phase I Cultural Resource Survey for the Siempre Viva Warehouse Project, City of San Diego.* Prepared for Terrazas Construction. Report on file at the California South Coastal Information Center.
- 2014 *Phase I Cultural Resource Survey for the Silver Street Village Homes Project, City of San Diego.* Prepared for EHOFF La Jolla, LLC. Report on file at the California South Coastal Information Center.
- 2014 *Phase I Cultural Resources Study for the 915 Grape Street Project.* Prepared for Bay View SD, LLC. Report on file at the California South Coastal Information Center.
- 2014 *Phase I Cultural Resource Study for the Altman Residence Project, 9696 La Jolla Farms Road, La Jolla, California 92037.* Prepared for Steve Altman. Report on file at the California South Coastal Information Center.
- 2014 *Phase I Cultural Resources Survey for the Clay Street Parcel Project, City of Jurupa Valley, County of Riverside.* Prepared for CV Communities, LLC. Report on file at the California Eastern Information Center.

- 2014 *Phase I Cultural Resources Survey for the Ecos Diamond Valley Project, Community of Winchester, County of Riverside.* Prepared for Ecos Energy, LLC. Report on file at the California Eastern Information Center.
- 2014 *Phase I Cultural Resources Survey for the Highland 44 Project.* Prepared for 29300 Baseline Partners, LLC. Report on file at the San Bernardino Archaeological Information Center.
- 2014 *A Phase I Cultural Resources Survey of the Palm Creek Ranch Project, Thousand Palms, Riverside County, California (APNs 650-230-002, 650-310-001, and 650-310-002).* Prepared for Palm Creek Ranch, LLC. Report on file at the California Eastern Information Center.
- 2013 *Archaeological Monitoring Report for the Webster Residence, La Jolla, California.* Prepared for KW Building and Development. Report on file at the California South Coastal Information Center.
- 2013 *Cultural Resource Monitoring Report for the Alvarado Trunk Sewer Phase III Project, City of San Diego.* Prepared for Ortiz Corporation General Engineering Contractors. Report on file at the California South Coastal Information Center.
- 2013 *Cultural Resource Monitoring Report for the Alvarado Trunk Sewer Phase IIIA Project, City of San Diego.* Prepared for TC Construction, Inc. Report on file at the California South Coastal Information Center.
- 2013 *Cultural Resource Monitoring Report for the Coral Mountain Apartments Project, City of La Quinta, California.* Prepared for Coral Mountain Apartments, LP. Report on file at the California Eastern Information Center.
- 2013 *Cultural Resource Monitoring Report for the F Street Emergency Water Main Replacement Project, City of San Diego.* Prepared for Orion Construction. Report on file at the California South Coastal Information Center.
- 2013 *Cultural Resource Monitoring Report for the Harbor Drive Trunk Sewer Project, City of San Diego.* Prepared for Burtech Pipeline. Report on file at the California South Coastal Information Center.
- 2013 *Cultural Resource Monitoring Report for the Hyde Residence.* Prepared for Dr. Paul Hyde. Report on file at the California South Coastal Information Center.
- 2013 *Cultural Resource Monitoring Report for the Juniper Street Sidewalk Project, City of San Diego.* Prepared for Palm Engineering Construction Company, Inc. Report on file at the California South Coastal Information Center.
- 2013 *Cultural Resource Monitoring Report for the Kates Residence Project.* Prepared for Brad and Shannon Kates. Report on file at the California South Coastal Information Center.
- 2013 *Cultural Resource Monitoring Report for the Pump Station 84 Upgrade and Pump Station 62 Abandonment Project.* Prepared for TC Construction, Inc. Report on file at the California South Coastal Information Center.
- 2013 *Cultural Resource Monitoring Report for the Sewer and Water Group 781 Project.* Prepared for TC Construction, Inc. Report on file at the California South Coastal Information Center.



- 2013 *Cultural Resource Monitoring Report for the Woolf Residence Project.* Prepared for A.J. Woolf Family Trust. Report on file at the California South Coastal Information Center.
- 2013 *Cultural Resources Study of the Fairway Drive Project.* Prepared for CV Communities, LLC. Report on file at the California Eastern Information Center.
- 2013 *Cultural Resource Monitoring Report for the Old Town Community Church Project, 2444 Congress Street, San Diego, California 92110.* Prepared for Soltek Pacific, Inc. Report on file at the California South Coastal Information Center.
- 2013 *Historic Structure Assessment, 2603 Dove Street, San Diego, California (APN) 452-674-32).* Prepared for Barzal and Scotti Real Estate Corporation. Report on file at the California South Coastal Information Center.
- 2013 *Historic Structure Assessment at the Western Christian School, 3105 Padua Avenue, Claremont, California 91711 (APN 8671-005-053).* Prepared for Western Christian School. Report on file at the City of Claremont.
- 2013 *Mitigation Monitoring Report for the 7th and F Street Parking Project, City of San Diego.* Prepared for DZI Construction. Report on file at the California South Coastal Information Center.
- 2013 *Mitigation Monitoring Report for the 1919 Spindrift Drive Project.* Prepared for V.J. and Uma Joshi. Report on file at the California South Coastal Information Center.
- 2013 *Mitigation Monitoring Report for the Knight Residence Project, 7970 Roseland Avenue, La Jolla, California.* Prepared for Mr. Dennis Knight. Report on file at the California South Coastal Information Center.
- 2013 *Mitigation Monitoring Report for the Sewer Group 799-750 Project.* Prepared for Burtech Pipeline. Report on file at the California South Coastal Information Center.
- 2013 *Negative Cultural Resource Monitoring Report for the Citywide Pump Station Upgrades Group II Project.* Prepared for Ortiz Corporation General Engineering Contractors. Report on file at the California South Coastal Information Center.
- 2013 *Negative Cultural Resource Monitoring Report for the Citywide Pump Station Upgrades Group III Project, City of San Diego.* Prepared for TC Construction, Inc. Report on file at the California South Coastal Information Center.
- 2013 *Phase I Cultural Resource Study for the 3364 Randy Lane Project, Chula Vista, California.* Prepared for H&M Construction. Report on file at the California South Coastal Information Center.
- 2013 *Phase I Cultural Resources Survey for the Ecos Nuevo Project, Community of Nuevo, County of Riverside.* Prepared for Ecos Energy, LLC. Report on file at the California Eastern Information Center.

- 2012 *Cultural Resource Monitoring Report for the Sewer and Water Group 754 Project, City of San Diego (Project No. 177711/187301)*. Prepared for S.C. Valley Engineering, Inc. Report on file at the California South Coastal Information Center
- 2012 *Cultural Resource Monitoring Report for the Sewer Group 714 Project*. Prepared for Burtech Pipeline. Report on file at the California South Coastal Information Center.
- 2012 *Cultural Resource Monitoring Report for the Sewer and Water Group 780 Project*. Prepared for Burtech Pipeline. Report on file at the California South Coastal Information Center.
- 2012 *Mitigation Monitoring of the 47th Street Warehouse Project, San Diego, California*. Prepared for Aardema Development. Report on file at the California South Coastal Information Center.
- 2012 *Mitigation Monitoring Report for the Florida Street Apartments Project (The Kalos Project)*. Prepared for Florida Street Housing Associates. Report on file at the California South Coastal Information Center.
- 2012 *Mitigation Monitoring Report for the Pacific Highway Trunk Sewer Project*. Prepared for HPS Mechanical. Report on file at the California South Coastal Information Center.
- 2011 *Phase I Cultural Resource Study for the Wesley Palms Retirement Community Project, San Diego, California*. Prepared for Front Porch Development Company. Report on file at the California South Coastal Information Center.

Kraft, Jennifer R. and Tracy A. Stropes

- 2013 *Phase I Cultural Resources Survey for the Orange Street Project*. Prepared for Mike Lesle. Report on file at the California Eastern Information Center.
- 2012 *Mitigation Monitoring Report for the 13th & Market Project*. Prepared for The Hanover Company. Report on file at the California South Coastal Information Center.
- 2012 *Mitigation Monitoring Report for the T-Mobile West, LLC Telecommunications Candidate SD02867C (Presidio Park)*. Prepared for Michael Brandmann Associates. Report on file at the California South Coastal Information Center.

Kraft, Jennifer R., Tracy A. Stropes, and Brian F. Smith

- 2013 *Mitigation Monitoring Report for the Ariel Suites Project*. Prepared for Ariel Suites, LP. Report on file at the California South Coastal Information Center.

Smith, Brian F., Claire M. Allen, and Jennifer R. **Kraft**

- 2015 *A Phase I and II Cultural Resource Report for the Lake Ranch Project, TR 36730, Riverside County, California*. Prepared for Christopher Development Group. Report on file at the California Eastern Information Center.

Smith, Brian F., Claire M. Allen, Mary M. Lenich, and Jennifer R. **Kraft**

- 2014 *Phase I and Phase II Cultural Resource Assessment for the Citrus Heights II Project, TTM 36475, Riverside County, California*. Prepared for CV Communities, LLC. Report on file at the California Eastern Information Center.

Smith, Brian F. and Jennifer R. **Kraft**

- 2016 *Archaeological Test Plan for the Broadway Block Project City of San Diego Project No. 492554.* Prepared for BOSA Development California, Inc. Report on file at the City of San Diego Development Services Department.
- 2016 *Cultural Resource Survey and Archaeological Test Plan for the Maker's Quarter – Block D Project, City of San Diego.* Prepared for L2HP, LLC. Report on file at the City of San Diego Development Services Department.
- 2016 *Cultural Resource Testing Program for the 1919 Pacific Highway Project City of San Diego City Preliminary Review PTS #451689 Grading and Shoring PTS #465292.* Prepared for Wood Partners. Report on file at the City of San Diego Development Services Department.
- 2016 *Historical Resource Research Report for the 2314 Rue Adriane Building, San Diego, California Project No. 460562.* Prepared for the Brown Studio. Report on file at the City of San Diego Development Services Department.
- 2016 *Historical Resource Research Report for the 4921 Voltaire Street Building, San Diego, California Project No. 471161.* Prepared for Sean Gogarty. Report on file at the City of San Diego Development Services Department.
- 2016 *Historical Resource Research Report for the 5147 Hilltop Drive Building, San Diego, California Project No. 451707.* Prepared for JORGA Home Design. Report on file at the City of San Diego Development Services Department.
- 2016 *Historical Resource Research Report for the Midway Drive Postal Service Processing and Distribution Center 2535 Midway Drive San Diego, California 92138 Project No. 507152.* Prepared for Steelwave, LLC. Report on file at the City of San Diego Development Services Department.
- 2016 *Historic Resource Technical Report for 9036 La Jolla Shores Lane La Jolla, California Project No. 471873.* Prepared for Eliza and Stuart Stedman. Report on file at the City of San Diego Development Services Department.
- 2015 *Cultural Resource Mitigation Monitoring Program for the Urban Discovery Academy Project.* Prepared for Davis Reed Construction, Inc. Report on file at the City of San Diego Development Services Department.
- 2015 *Cultural Resource Survey and Archaeological Test Plan for the 520 West Ash Street Project, City of San Diego.* Prepared for Lennar Multifamily Communities. Report on file at the City of San Diego Development Services Department.
- 2015 *Cultural Resource Survey and Archaeological Test Plan for the 1919 Pacific Highway Project City of San Diego City Preliminary Review PTS #451689 Grading and Shoring PTS #465292.* Prepared for Wood Partners. Report on file at the City of San Diego Development Services Department.
- 2015 *Cultural Resource Survey and Archaeological Test Plan for the Bayside Fire Station Project, City of San Diego.* Prepared for Civic San Diego. Report on file at the City of San Diego Development Services Department.

- 2015 *Cultural Resource Survey and Archaeological Test Plan for the Kettner and Ash Project, City of San Diego.* Prepared for BOSA Development California, Inc. Report on file at the City of San Diego Development Services Department.
- 2015 *Cultural Resource Survey and Archaeological Test Plan for the PRIME Project.* Prepared for InDev, Inc. Report on file at the City of San Diego Development Services Department.
- 2015 *Cultural Resource Testing Program for the BOSA Lot 1 Project, City of San Diego.* Prepared for BOSA Development California, Inc. Report on file at the City of San Diego Development Services Department.
- 2015 *Historical Resource Research Report for the 921 Muirlands Drive Building, San Diego, California 92037.* Prepared for Stephen Karas. Report on file at the California South Coastal Information Center.
- 2015 *Historical Resource Research Report for the 1311 Sutter Street Building, San Diego, California 92103.* Prepared for A.K. Smith. Report on file at the California South Coastal Information Center.
- 2015 *Historical Resource Research Report for 16929 West Bernardo Drive, San Diego, California.* Prepared for Rancho Bernardo LHP, LLC. Report on file at the City of San Diego Development Services Department.
- 2015 *Historical Resource Research Report for the 2002-2004 El Cajon Boulevard Building, San Diego, California 92014.* Prepared for T.R. Hale, LLC. Report on file at the California South Coastal Information Center.
- 2015 *Historical Resource Research Report for the 4319-4321 Florida Street Building, San Diego, California 92104.* Prepared for T.R. Hale, LLC. Report on file at the California South Coastal Information Center.
- 2015 *Historic Resource Technical Report for 726 Jersey Court San Diego, California Project No. 455127.* Prepared for Chad Irwin. Report on file at the California South Coastal Information Center.
- 2015 *Historic Resource Technical Report for 1111 Golden Gate Drive San Diego, California.* Prepared for Alexis and Shawna Volen. Report on file at the California South Coastal Information Center.
- 2015 *Islenair Historic Sidewalk Stamp Program for Sewer and Water Group 3014, City of San Diego.* Prepared for Ortiz Corporation. Report on file at the California South Coastal Information Center.
- 2015 *A Negative Cultural Resources Survey Report for the Bonita 14 Project, San Diego County, California.* Prepared for Southwest Management Company. Report on file at the California South Coastal Information Center.
- 2015 *A Phase I and II Cultural Resources Assessment for the Decker Parcels II Project, Planning Case No. 36962, Riverside County, California.* Prepared for Trammell Crow Southern California Development, Inc. Report on file at the California Eastern Information Center.

- 2015 *A Phase I Cultural Resources Assessment for the Idyllwild Community Center Project, Conditional Use Permit No. 3673-RI, Riverside County, California.* Prepared for San Jacinto Mountain Community Center. Report on file at the California Eastern Information Center.
- 2014 *Archaeological Test Plan for the Atmosphere Project, City of San Diego.* Prepared for Wakeland Housing and Development Corporation. Report on file at the City of San Diego Development Services Department.
- 2014 *Archaeological Test Plan for the Ballpark Village Project, San Diego, California.* Prepared for Ballpark Village, LLC. Report on file at the City of San Diego Development Services Department.
- 2014 *Cultural Resource Survey and Archaeological Test Plan for the Idea1 Project, City of San Diego.* Prepared for Lowe Enterprises Real Estate Group. Report on file at the City of San Diego Development Services Department.
- 2014 *Cultural Resource Survey and Archaeological Test Plan for the Lennar 15<sup>th</sup> and Island Project, City of San Diego.* Prepared for Lennar Multifamily Communities. Report on file at the City of San Diego Development Services Department.
- 2014 *Historical Resource Research Report for 2850 Sixth Avenue, San Diego, California (Project No. 392445).* Prepared for Zephyr Partners – RE, LLC. Report on file at the City of San Diego Development Services Department.
- 2014 *Phase I Cultural Resource Survey for the Hotel Felicita Project, City of Escondido, California (APNs 238-102-41 and -45).* Prepared for Blue Light Capital Corporation. Report on file at the California South Coastal Information Center.
- 2013 *Cultural Resources Study for the Los Peñasquitos Adobe Drainage Project.* Prepared for HELIX Environmental Planning, Inc. Report on file at the California South Coastal Information Center.
- 2013 *Cultural Resources Study for the Rancho Peñasquitos Adobe Drainage MND Project, San Diego County, California (CSD-04.03).* Prepared for HELIX Environmental Planning, Inc. Report on file at the California South Coastal Information Center.

Smith, Brian F., Jennifer R. **Kraft**, and Mary M. Lenich

- 2015 *A Phase I and II Cultural Resources Assessment for the Decker Parcels I Project, Planning Case No. 36950, Riverside County, California.* Prepared for Trammell Crow Southern California Development, Inc. Report on file at the California Eastern Information Center.

Smith, Brian F. and Jennifer R.K. **Stropes**

- 2016 *Historical Resource Research Report for the 1852-1866 Bacon Street Buildings San Diego, California 92107.* Prepared for Cartega International. Report on file at the California Eastern Information Center.
- 2016 *Historical Resource Research Report for 2001 Fourth Avenue, San Diego, California Project No. 523694.* Prepared for H.G. Fenton Company. Report on file at the City of San Diego Development Services Department.

Smith, Brian F., Tracy A. Stropes, Tracy M. Buday, and Jennifer R. **Kraft**

2015 *Mitigation Monitoring and Reporting Program for the 1900 Spindrift Drive – Cabana and Landscape Improvements Project, La Jolla, California.* Prepared for Darwin Deason. Report on file at the California South Coastal Information Center.

2015 *Mitigation Monitoring and Reporting Program for the 1912 Spindrift Drive – Landscape Improvements Project, La Jolla, California.* Prepared for Darwin Deason. Report on file at the California South Coastal Information Center.

Stropes, J.R.K. and Brian F. Smith

2016 *Cultural Resource Monitoring Report for the Sewer and Water Group 758 Project City of San Diego Project No. 230024 Sewer WBS No. B-00365; Water WBS No. B-00074.* Prepare for Burtech Pipeline, Inc. Report on file at the California South Coastal Information Center.

2016 *Phase I Cultural Resource Survey for the 2499 Pacific Highway Project City of San Diego CCDP/CCPDP/CDP/CUP No. 2016-30 APN 533-021-01.* Prepared for Gary Mansour. Report on file at the California South Coastal Information Center.

2016 *Results of a Cultural Resource Testing Program for the Maker's Quarter – Block D Project, City of San Diego.* Prepared for L2HP, LLC. Report on file at the California South Coastal Information Center.

Stropes, J.R.K., Tracy A. Stropes, and Brian F. Smith

2016 *Results of the Mitigation Monitoring Program for the Amitai Residence Project 2514 Ellentown Road La Jolla, California 92037 Project No. 388734.* Prepared for David Amitai. Report on file at the California South Coastal Information Center.

Stropes, Tracy A., Jennifer R. **Kraft**, and Brian F. Smith

2016 *Cultural Resources Study for the Ocean Breeze Ranch Project, Bonsall, San Diego County, California (PDS2015-MPA-15-011).* Prepared for Ocean Breeze Ranch, LLC. Report on file at the California South Coastal Information Center.

Stropes, Tracy A., Brian F. Smith, and Jennifer R. **Kraft**

2015 *Results of the Mitigation Monitoring Program for the Keating Residence Project, La Jolla, California.* Prepared for Brian Keating. Report on file at the California South Coastal Information Center.

### **Contributing Author /Analyst**

2015 Faunal Analysis and Report Section for *Cultural Resource Data Recovery and Mitigation Monitoring Program for Site SDI-10,237 Locus F, Everly Subdivision Project, El Cajon, California* by Tracy A. Stropes and Brian F. Smith. Prepared for Shea Homes. Report on file at the California South Coastal Information Center.

2011 Faunal Analysis and Report Section for *A Cultural Resource Data Recovery Program for SDI-4606 Locus B for St. Gabriel's Catholic Church, Poway, California* by Brian F. Smith and Tracy A. Stropes. Prepared for St. Gabriel's Catholic Church. Report on file at the California South Coastal Information Center.

2010 Faunal Analysis and Report Section for *An Archaeological Study for the 1912 Spindrift Drive Project, La Jolla, California* by Brian F. Smith and Tracy A. Stropes. Prepared for Island Architects. Report on file at the California South Coastal Information Center.

- 2010 Faunal Analysis and Report Section for *Results of a Cultural Mitigation and Monitoring Program for Robertson Ranch: Archaic and Late Prehistoric Camps near the Agua Hedionda Lagoon* by Brian F. Smith. Prepared for McMillan Land Development. Report on file at the California South Coastal Information Center.
- 2009 Faunal Identification for “An Earlier Extirpation of Fur Seals in the Monterey Bay Region: Recent Findings and Social Implications” by Diane Gifford-Gonzalez and Charlotte K. Sunseri. *Proceedings of the Society for California Archaeology, Vol. 21, 2009*

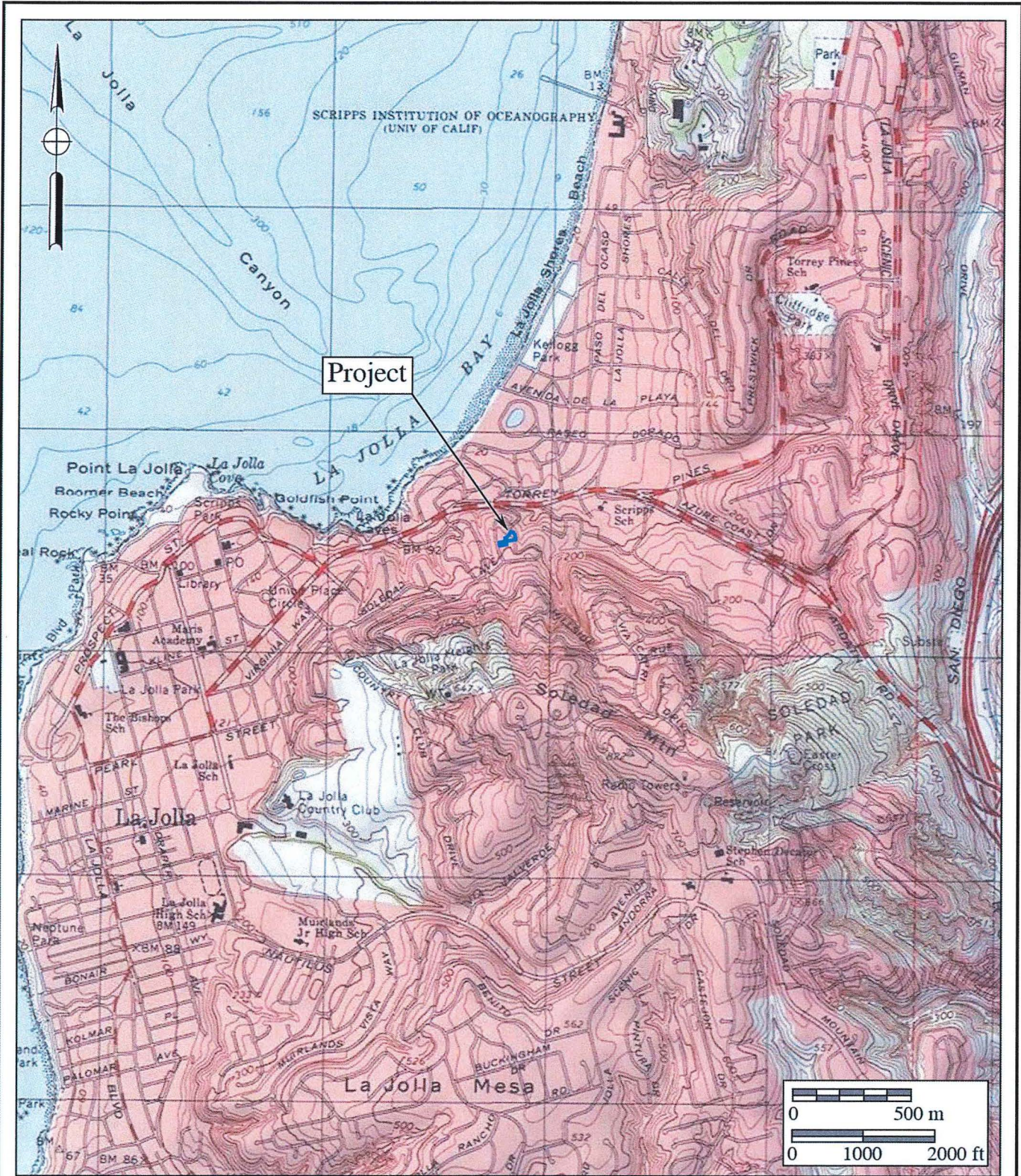
**X. ATTACHMENT B**

**Project Maps:**

**General Location Map  
USGS Project Location Map  
800' Scale City Engineering Map  
Project Development Map**







**Figure 2**

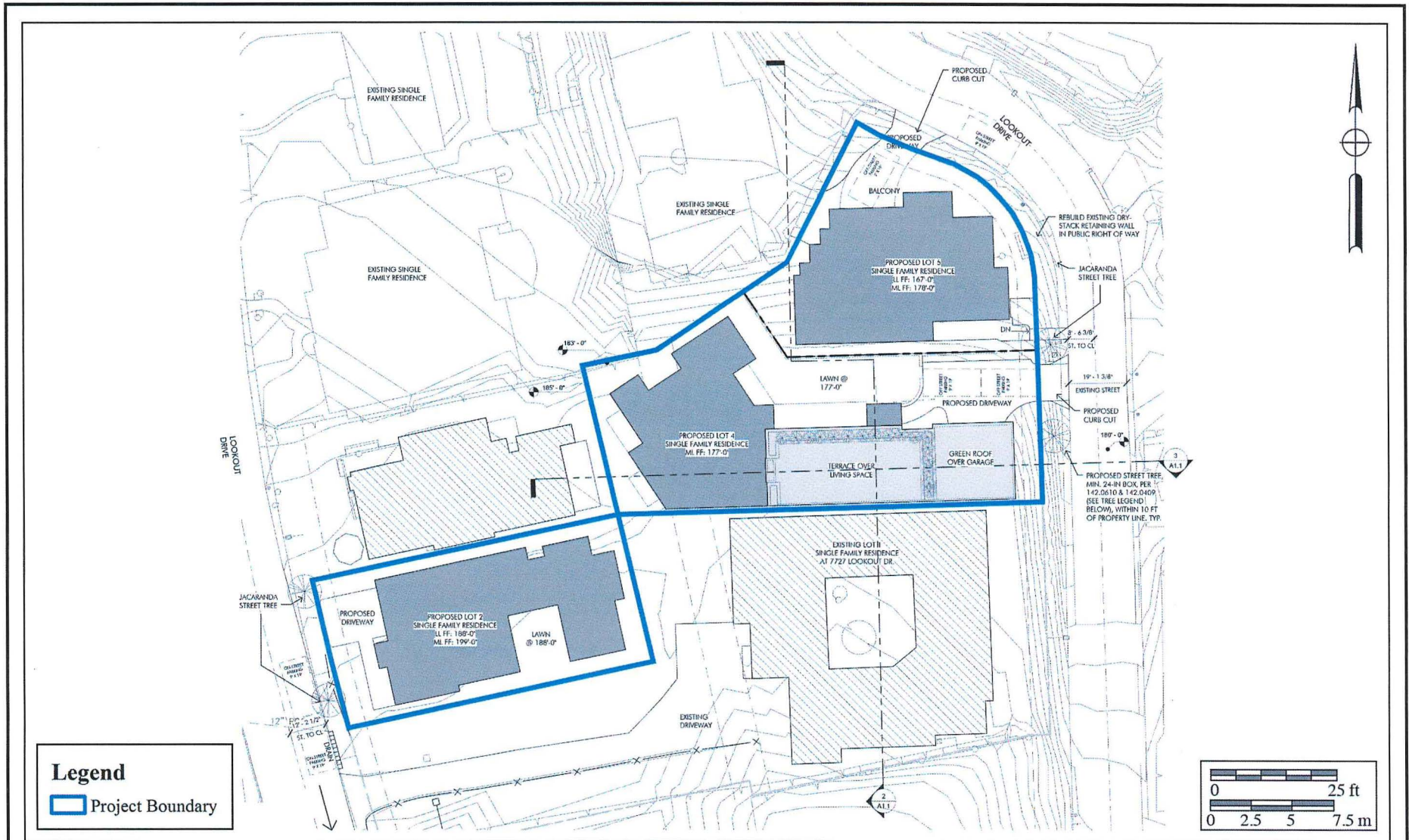
**Project Location Map**

The Lookout Residences Project

USGS *La Jolla OE W* and *La Jolla* Quadrangles (7.5-minute series)







**XI. ATTACHMENT C**

**Archaeological Records Search Results**

---

## BRIAN F. SMITH and ASSOCIATES

---

### CALIFORNIA HISTORICAL RESOURCES INFORMATION SYSTEMS RECORDS SEARCH

**Company:** Brian F. Smith and Associates  
**Processed By:** Kris Reinicke  
**Date Processed:** 08-25-2017  
**Project Identification:** The 7727 Lookout Drive Project  
**Information Center:** South Coastal Information Center  
**Search Radius:** 1 Mile Buffer

#### **Historical Resources:**

Trinomial and Primary site maps have been reviewed. All sites within the project boundaries and the specified radius of the project area have been plotted. Copies of the site record forms have been reviewed for all recorded sites.

There are 74 resources located within a one-mile radius of the current project area and none intersect the APE.

#### **Historic Addresses:**

There are 182 historic addresses within a one-mile radius of the current project. None are within the APE.

#### **Previous Survey Report Boundaries:**

Project boundary maps have been reviewed. National Archaeological Database (NADB) citations for reports within the project boundaries and within the specified radius of the project area have been reviewed.

There are 270 reports within a one-mile radius of the current project area. Two reports intersect the current project area: SD-13018 and SD-14614.

**XII. ATTACHMENT D**

**NAHC Sacred Lands File Search Results**



## **Brian F. Smith & Associates**

**Archaeological/Biological/Historical/Paleontological/Air/Traffic/Noise Consulting**

August 22, 2017

For: Native American Heritage Commission  
915 Capitol Mall, Room 364  
Sacramento, California 95814

From: Kris Reinicke, M.S.  
Brian F. Smith and Associates Inc.  
14010 Poway Rd. Suite A  
Poway, CA 92064

Re: Request for Sacred Lands File and Native American Contact List for the 7727  
Lookout Drive Project, La Jolla, San Diego County, California.

I would like to request a record search of the Sacred Lands File and a list of appropriate Native American contacts for the following project: 7727 Lookout Drive (Project No. 17-155). This project is an archaeological survey requested by the City of San Diego for residential development of three lots (a total of .41 acres) located at 7727 Lookout Drive, La Jolla, County of San Diego, CA 92037. Specifically, the project is located in the Pueblo Land Grant of San Diego (Township 15 south, Range 04 west, projected), in the USGS *La Jolla* Quadrangle. A copy of the project map showing the project area has been included for the processing of this request.

Sincerely,

Kris Reinicke, M.S.  
Archaeologist/GIS Specialist  
Billing: 14678 Ibex Court, San Diego, CA 92129  
Phone: 858-484-0915  
Email: [kris@bfsa-ca.com](mailto:kris@bfsa-ca.com)

Attachments:

USGS 7.5 *La Jolla*, California, topographic maps with project area delineated.

Sacred Lands File Request Form



**Sacred Lands File & Native American Contacts List Request**  
**NATIVE AMERICAN HERITAGE COMMISSION**  
\*915 Capitol Mall, RM 364 \* Sacramento, CA 95814 \* (916) 653-4082 \*  
(916) 657-5390 – Fax \* [nahc@pacbell.net](mailto:nahc@pacbell.net)

*Information Below is Required for a Sacred Lands File Search*

Project: The 7727 Lookout Drive Project

County: San Diego

USGS Quadrangle Names: *La Jolla*

Pueblo Land Grant of San Diego (Township 15 south, Range 04 west, projected)

Company/Firm/Agency: Brian F. Smith & Associates Inc.

Contact Person: Kris Reinicke

Street Address: 14010 Poway Road, Suite A

City: Poway            Zip: 92064

Phone: 858-484-0915

Fax: 858-679-9896

Email: [kris@bfsa-ca.com](mailto:kris@bfsa-ca.com)

Project Description:

This records search is for my company's project: 7727 Lookout Drive (Project No. 17-155). This project is an archaeological survey requested by the City of San Diego for residential development of three lots (a total of .41 acres) located at 7727 Lookout Drive, La Jolla, County of San Diego, CA 92037. Specifically, the project is located in the Pueblo Land Grant of San Diego (Township 15 south, Range 04 west, projected), in the USGS *La Jolla* Quadrangle. A copy of the project map showing the project area has been included for the processing of this request.



0 1,000 2,000  
 Feet

Record Search Location Map  
 The 7727 Lookout Drive Project  
 USGS La Jolla OE W and La Jolla Quadrangles (7.5-minute Series)

**NATIVE AMERICAN HERITAGE COMMISSION**

Environmental and Cultural Department  
1550 Harbor Blvd., ROOM 100  
West SACRAMENTO, CA 95691  
(916) 373-3710



155  
August 25, 2017

Kris Reinicke  
Brian F. Smith & Associates, Inc.

Sent by E-mail: kris@bfsa-ca.com

RE: Proposed 7727 Lookout Drive Project, City of La Jolla; La Jolla USGS Quadrangle, San Diego County, California

Dear Ms. Reinicke:

Attached is a list of tribes that have cultural and traditional affiliation to the areas of potential project effect (APE) referenced above. I suggest you contact all of those listed, if they cannot supply information, they might recommend others with specific knowledge. The list should provide a starting place to locate areas of potential adverse impact within the APE. By contacting all those on the list, your organization will be better able to respond to claims of failure to consult, as may be required under particular state statutes. If a response has not been received within two weeks of notification, the Native American Heritage Commission (NAHC) requests that you follow-up with a telephone call to ensure that the project information has been received.

A record search of the Native American Heritage Commission (NAHC) *Sacred Lands File* (SLF) was completed for the area of potential project effect (APE) for the above referenced project. Sites have been located within the APE you provided that may be impacted by the project. Please immediately contact the Lipay Nation of Santa Ysabel at (760) 765-0845 for more information about these sites.

If you receive notification of change of addresses and phone numbers from any of these individuals or groups, please notify me. With your assistance we are able to assure that our lists contain current information. If you have any questions, please contact me at my email address: [gayle.totton@nahc.ca.gov](mailto:gayle.totton@nahc.ca.gov).

Sincerely,

A handwritten signature in blue ink that reads "Gayle Totton".

Gayle Totton, M.A., PhD.  
Associate Governmental Program Analyst

**CONFIDENTIALITY NOTICE:** This communication with its contents may contain confidential and/or legally privileged information. It is solely for the use of the intended recipient(s). Unauthorized interception, review, use or disclosure is prohibited and may violate applicable laws including the Electronic Communications Privacy Act. If you are not the intended recipient, please contact the sender and destroy all copies of the communication.

**Native American Heritage Commission  
Native American Contact List  
San Diego County  
8/28/2017**

**Barona Group of the Capitan Grande**

Edwin Romero, Chairperson  
1095 Barona Road  
Lakeside, CA, 92040  
Phone: (619) 443 - 6612  
Fax: (619) 443-0681  
clloyd@barona-nsn.gov

Kumeyaay

**Inaja Band of Mission Indians**

Rebecca Osuna, Chairperson  
2005 S. Escondido Blvd.  
Escondido, CA, 92025  
Phone: (760) 737 - 7628  
Fax: (760) 747-8568

Kumeyaay

**Campo Band of Mission Indians**

Ralph Goff, Chairperson  
36190 Church Road, Suite 1  
Campo, CA, 91906  
Phone: (619) 478 - 9046  
Fax: (619) 478-5818  
rgoff@campo-nsn.gov

Kumeyaay

**Jamul Indian Village**

Erica Pinto, Chairperson  
P.O. Box 612  
Jamul, CA, 91935  
Phone: (619) 669 - 4785  
Fax: (619) 669-4817

Kumeyaay

**Ewilaapaayp Tribal Office**

Robert Pinto, Chairperson  
4054 Willows Road  
Alpine, CA, 91901  
Phone: (619) 445 - 6315  
Fax: (619) 445-9126

Kumeyaay

**Kwaaymii Laguna Band of Mission Indians**

Carmen Lucas,  
P.O. Box 775  
Pine Valley, CA, 91962  
Phone: (619) 709 - 4207

Kumeyaay

**Ewilaapaayp Tribal Office**

Michael Garcia, Vice Chairperson  
4054 Willows Road  
Alpine, CA, 91901  
Phone: (619) 445 - 6315  
Fax: (619) 445-9126  
michaelg@leaningrock.net

Kumeyaay

**La Posta Band of Mission Indians**

Javaughn Miller, Tribal Administrator  
8 Crestwood Road  
Boulevard, CA, 91905  
Phone: (619) 478 - 2113  
Fax: (619) 478-2125  
jmiller@LPtribe.net

Kumeyaay

**Iipay Nation of Santa Ysabel**

Clint Linton, Director of Cultural Resources  
P.O. Box 507  
Santa Ysabel, CA, 92070  
Phone: (760) 803 - 5694  
cjlinton73@aol.com

Kumeyaay

**La Posta Band of Mission Indians**

Gwendolyn Parada, Chairperson  
8 Crestwood Road  
Boulevard, CA, 91905  
Phone: (619) 478 - 2113  
Fax: (619) 478-2125  
LP13boots@aol.com

Kumeyaay

**Iipay Nation of Santa Ysabel**

Virgil Perez, Chairperson  
P.O. Box 130  
Santa Ysabel, CA, 92070  
Phone: (760) 765 - 0845  
Fax: (760) 765-0320

Kumeyaay

**Manzanita Band of Kumeyaay Nation**

Angela Elliott Santos, Chairperson  
P.O. Box 1302  
Boulevard, CA, 91905  
Phone: (619) 766 - 4930  
Fax: (619) 766-4957

Kumeyaay

This list is current only as of the date of this document. Distribution of this list does not relieve any person of statutory responsibility as defined in Section 7050.5 of the Health and Safety Code, Section 5097.94 of the Public Resource Section 5097.98 of the Public Resources Code.

This list is only applicable for contacting local Native Americans with regard to cultural resources assessment for the proposed 7727 Lookout Drive Project, San Diego County.

Native American Heritage Commission  
Native American Contact List  
San Diego County  
8/28/2017

**Manzanita Band of Kumeyaay Nation**

Nick Elliott, Cultural Resources Coordinator  
P. O. Box 1302 Kumeyaay  
Boulevard, CA, 91905  
Phone: (619) 766 - 4930  
Fax: (619) 766-4957  
nickmepa@yahoo.com

**Sycuan Band of the Kumeyaay Nation**

Lisa Haws, Cultural Resources Manager  
1 Kwaaypaay Court Kumeyaay  
El Cajon, CA, 92019  
Phone: (619) 312 - 1935  
lhaws@sycuan-nsn.gov

**Mesa Grande Band of Mission Indians**

Mario Morales, Cultural Resources Representative  
PMB 366 35008 Pala Temecula Rd. Kumeyaay  
Pala, CA, 92059  
Phone: (760) 622 - 1336

**Sycuan Band of the Kumeyaay Nation**

Cody J. Martinez, Chairperson  
1 Kwaaypaay Court Kumeyaay  
El Cajon, CA, 92019  
Phone: (619) 445 - 2613  
Fax: (619) 445-1927  
ssilva@sycuan-nsn.gov

**Mesa Grande Band of Mission Indians**

Virgil Oyos, Chairperson  
P.O Box 270 Kumeyaay  
Santa Ysabel, CA, 92070  
Phone: (760) 782 - 3818  
Fax: (760) 782-9092  
mesagrandeband@msn.com

**Viejas Band of Kumeyaay Indians**

Robert Welch, Chairperson  
1 Viejas Grade Road Kumeyaay  
Alpine, CA, 91901  
Phone: (619) 445 - 3810  
Fax: (619) 445-5337  
jhagen@viejas-nsn.gov

**San Pasqual Band of Mission Indians**

Allen E. Lawson, Chairperson  
P.O. Box 365 Kumeyaay  
Valley Center, CA, 92082  
Phone: (760) 749 - 3200  
Fax: (760) 749-3876  
allenl@sanpasqualtribe.org

**Viejas Band of Kumeyaay Indians**

Julie Hagen,  
1 Viejas Grade Road Kumeyaay  
Alpine, CA, 91901  
Phone: (619) 445 - 3810  
Fax: (619) 445-5337  
jhagen@viejas-nsn.gov

**San Pasqual Band of Mission Indians**

John Flores, Environmental Coordinator  
P. O. Box 365 Kumeyaay  
Valley Center, CA, 92082  
Phone: (760) 749 - 3200  
Fax: (760) 749-3876  
johnf@sanpasqualtribe.org

This list is current only as of the date of this document. Distribution of this list does not relieve any person of statutory responsibility as defined in Section 7050.5 of the Health and Safety Code, Section 5097.94 of the Public Resource Section 5097.98 of the Public Resources Code.

This list is only applicable for contacting local Native Americans with regard to cultural resources assessment for the proposed 7727 Lookout Drive Project, San Diego County.



August 30, 2017

Allen E. Lawson  
Chairperson  
San Pasqual Band of Mission Indians  
P.O. Box 365  
Valley Center, California 92082

Subject: Information regarding Native American cultural resources on or near the 7727 Lookout Drive Project, La Jolla, San Diego County, California

Dear Mr. Lawson:

This inquiry is requesting information you may have regarding the existence of Native American cultural resources on or near the 7727 Lookout Drive Project. The information you provide will be used to assess areas of potential adverse impact within the proposed project's Area of Potential Effect (APE). Any information you might provide will be kept confidential and will not be divulged to the public.

The project is in San Diego County, California, and includes the residential development of three lots (a total of .41 acres). The project area may be found at 7727 Lookout Drive in La Jolla, California. Specifically, this project is located in the Pueblo Land Grant of San Diego (Township 15 south, Range 04 west, projected), in the USGS *La Jolla* Quadrangle. Please find enclosed sections of the USGS *La Jolla* Quadrangle map on which the project is delineated.

The Sacred Lands File search came back positive for results in the *La Jolla* Quadrangle. The Native American Heritage Commission requested that we consult with you directly regarding the potential for the presence of Native American cultural resources that may be impacted by this project. If you do have information to provide regarding any resources on or near the project, please contact Brian Smith or myself at (858) 484-0915, or contact the County of San Diego directly. We would like to extend our thanks for your response regarding this issue.

Sincerely,

Tracy A. Stropes, M.A., RPA  
Senior Project Archaeologist  
tstropes@bfsa-ca.com

Attachment:

USGS 7.5-minute *La Jolla* topographic map with project area delineated



August 30, 2017

Angela Elliott Santos  
Chairperson  
Manzanita Band of Kumeyaay Nation  
P.O. Box 1302  
Boulevard, California 91905

Subject: Information regarding Native American cultural resources on or near the 7727 Lookout Drive Project, La Jolla, San Diego County, California

Dear Ms. Elliott Santos:

This inquiry is requesting information you may have regarding the existence of Native American cultural resources on or near the 7727 Lookout Drive Project. The information you provide will be used to assess areas of potential adverse impact within the proposed project's Area of Potential Effect (APE). Any information you might provide will be kept confidential and will not be divulged to the public.

The project is in San Diego County, California, and includes the residential development of three lots (a total of .41 acres). The project area may be found at 7727 Lookout Drive in La Jolla, California. Specifically, this project is located in the Pueblo Land Grant of San Diego (Township 15 south, Range 04 west, projected), in the USGS *La Jolla* Quadrangle. Please find enclosed sections of the USGS *La Jolla* Quadrangle map on which the project is delineated.

The Sacred Lands File search came back positive for results in the *La Jolla* Quadrangle. The Native American Heritage Commission requested that we consult with you directly regarding the potential for the presence of Native American cultural resources that may be impacted by this project. If you do have information to provide regarding any resources on or near the project, please contact Brian Smith or myself at (858) 484-0915, or contact the County of San Diego directly. We would like to extend our thanks for your response regarding this issue.

Sincerely,

Tracy A. Stropes, M.A., RPA  
Senior Project Archaeologist  
tstropes@bfsa-ca.com

Attachment:

USGS 7.5-minute *La Jolla* topographic map with project area delineated



August 30, 2017

Carmen Lucas  
Kwaaymii Laguna Band of Mission Indians  
P.O. Box 775  
Pine Valley, California 91962

Subject: Information regarding Native American cultural resources on or near the 7727 Lookout Drive Project, La Jolla, San Diego County, California

Dear Ms. Lucas:

This inquiry is requesting information you may have regarding the existence of Native American cultural resources on or near the 7727 Lookout Drive Project. The information you provide will be used to assess areas of potential adverse impact within the proposed project's Area of Potential Effect (APE). Any information you might provide will be kept confidential and will not be divulged to the public.

The project is in San Diego County, California, and includes the residential development of three lots (a total of .41 acres). The project area may be found at 7727 Lookout Drive in La Jolla, California. Specifically, this project is located in the Pueblo Land Grant of San Diego (Township 15 south, Range 04 west, projected), in the USGS *La Jolla* Quadrangle. Please find enclosed sections of the USGS *La Jolla* Quadrangle map on which the project is delineated.

The Sacred Lands File search came back positive for results in the *La Jolla* Quadrangle. The Native American Heritage Commission requested that we consult with you directly regarding the potential for the presence of Native American cultural resources that may be impacted by this project. If you do have information to provide regarding any resources on or near the project, please contact Brian Smith or myself at (858) 484-0915, or contact the County of San Diego directly. We would like to extend our thanks for your response regarding this issue.

Sincerely,

Tracy A. Stropes, M.A., RPA  
Senior Project Archaeologist  
tstropes@bfsa-ca.com

Attachment:

USGS 7.5-minute *La Jolla* topographic map with project area delineated





August 30, 2017

Clint Linton  
Director of Cultural Resources  
Iipay Nation of Santa Ysabel  
P.O. Box 507  
Santa Ysabel, California 92070

Subject: Information regarding Native American cultural resources on or near the 7727 Lookout Drive Project, La Jolla, San Diego County, California

Dear Mr. Linton:

This inquiry is requesting information you may have regarding the existence of Native American cultural resources on or near the 7727 Lookout Drive Project. The information you provide will be used to assess areas of potential adverse impact within the proposed project's Area of Potential Effect (APE). Any information you might provide will be kept confidential and will not be divulged to the public.

The project is in San Diego County, California, and includes the residential development of three lots (a total of .41 acres). The project area may be found at 7727 Lookout Drive in La Jolla, California. Specifically, this project is located in the Pueblo Land Grant of San Diego (Township 15 south, Range 04 west, projected), in the USGS *La Jolla* Quadrangle. Please find enclosed sections of the USGS *La Jolla* Quadrangle map on which the project is delineated.

The Sacred Lands File search came back positive for results in the *La Jolla* Quadrangle. The Native American Heritage Commission requested that we consult with you directly regarding the potential for the presence of Native American cultural resources that may be impacted by this project. If you do have information to provide regarding any resources on or near the project, please contact Brian Smith or myself at (858) 484-0915, or contact the County of San Diego directly. We would like to extend our thanks for your response regarding this issue.

Sincerely,

Tracy A. Stropes, M.A., RPA  
Senior Project Archaeologist  
tstropes@bfsa-ca.com

Attachment:

USGS 7.5-minute *La Jolla* topographic map with project area delineated



August 30, 2017

Cody J. Martinez  
Chairperson  
Sycuan Band of the Kumeyaay Nation  
1 Kwaaypaay Court  
El Cajon, California 92019

Subject: Information regarding Native American cultural resources on or near the 7727 Lookout Drive Project, La Jolla, San Diego County, California

Dear Mr. Martinez:

This inquiry is requesting information you may have regarding the existence of Native American cultural resources on or near the 7727 Lookout Drive Project. The information you provide will be used to assess areas of potential adverse impact within the proposed project's Area of Potential Effect (APE). Any information you might provide will be kept confidential and will not be divulged to the public.

The project is in San Diego County, California, and includes the residential development of three lots (a total of .41 acres). The project area may be found at 7727 Lookout Drive in La Jolla, California. Specifically, this project is located in the Pueblo Land Grant of San Diego (Township 15 south, Range 04 west, projected), in the USGS *La Jolla* Quadrangle. Please find enclosed sections of the USGS *La Jolla* Quadrangle map on which the project is delineated.

The Sacred Lands File search came back positive for results in the *La Jolla* Quadrangle. The Native American Heritage Commission requested that we consult with you directly regarding the potential for the presence of Native American cultural resources that may be impacted by this project. If you do have information to provide regarding any resources on or near the project, please contact Brian Smith or myself at (858) 484-0915, or contact the County of San Diego directly. We would like to extend our thanks for your response regarding this issue.

Sincerely,

Tracy A. Stropes, M.A., RPA  
Senior Project Archaeologist  
tstropes@bfsa-ca.com

Attachment:

USGS 7.5-minute *La Jolla* topographic map with project area delineated



August 30, 2017

Edwin Romero  
Chairperson  
Barona Group of the Capitan Grande  
1095 Barona Road  
Lakeside, California 92040

Subject: Information regarding Native American cultural resources on or near the 7727 Lookout Drive Project, La Jolla, San Diego County, California

Dear Mr. Romero:

This inquiry is requesting information you may have regarding the existence of Native American cultural resources on or near the 7727 Lookout Drive Project. The information you provide will be used to assess areas of potential adverse impact within the proposed project's Area of Potential Effect (APE). Any information you might provide will be kept confidential and will not be divulged to the public.

The project is in San Diego County, California, and includes the residential development of three lots (a total of .41 acres). The project area may be found at 7727 Lookout Drive in La Jolla, California. Specifically, this project is located in the Pueblo Land Grant of San Diego (Township 15 south, Range 04 west, projected), in the USGS *La Jolla* Quadrangle. Please find enclosed sections of the USGS *La Jolla* Quadrangle map on which the project is delineated.

The Sacred Lands File search came back positive for results in the *La Jolla* Quadrangle. The Native American Heritage Commission requested that we consult with you directly regarding the potential for the presence of Native American cultural resources that may be impacted by this project. If you do have information to provide regarding any resources on or near the project, please contact Brian Smith or myself at (858) 484-0915, or contact the County of San Diego directly. We would like to extend our thanks for your response regarding this issue.

Sincerely,

Tracy A. Stropes, M.A., RPA  
Senior Project Archaeologist  
tstropes@bfsa-ca.com

Attachment:

USGS 7.5-minute *La Jolla* topographic map with project area delineated



August 30, 2017

Erica Pinto  
Chairperson  
Jamul Indian Village  
P.O. Box 612  
Jamul, California 91935

Subject: Information regarding Native American cultural resources on or near the 7727 Lookout Drive Project, La Jolla, San Diego County, California

Dear Ms. Pinto:

This inquiry is requesting information you may have regarding the existence of Native American cultural resources on or near the 7727 Lookout Drive Project. The information you provide will be used to assess areas of potential adverse impact within the proposed project's Area of Potential Effect (APE). Any information you might provide will be kept confidential and will not be divulged to the public.

The project is in San Diego County, California, and includes the residential development of three lots (a total of .41 acres). The project area may be found at 7727 Lookout Drive in La Jolla, California. Specifically, this project is located in the Pueblo Land Grant of San Diego (Township 15 south, Range 04 west, projected), in the USGS *La Jolla* Quadrangle. Please find enclosed sections of the USGS *La Jolla* Quadrangle map on which the project is delineated.

The Sacred Lands File search came back positive for results in the *La Jolla* Quadrangle. The Native American Heritage Commission requested that we consult with you directly regarding the potential for the presence of Native American cultural resources that may be impacted by this project. If you do have information to provide regarding any resources on or near the project, please contact Brian Smith or myself at (858) 484-0915, or contact the County of San Diego directly. We would like to extend our thanks for your response regarding this issue.

Sincerely,

Tracy A. Stropes, M.A., RPA  
Senior Project Archaeologist  
tstropes@bfsa-ca.com

Attachment:

USGS 7.5-minute *La Jolla* topographic map with project area delineated



August 30, 2017

Gwendolyn Parada  
Chairperson  
La Posta Band of Mission Indians  
8 Crestwood Road  
Boulevard, California 91905

Subject: Information regarding Native American cultural resources on or near the 7727 Lookout Drive Project, La Jolla, San Diego County, California

Dear Ms. Parada:

This inquiry is requesting information you may have regarding the existence of Native American cultural resources on or near the 7727 Lookout Drive Project. The information you provide will be used to assess areas of potential adverse impact within the proposed project's Area of Potential Effect (APE). Any information you might provide will be kept confidential and will not be divulged to the public.

The project is in San Diego County, California, and includes the residential development of three lots (a total of .41 acres). The project area may be found at 7727 Lookout Drive in La Jolla, California. Specifically, this project is located in the Pueblo Land Grant of San Diego (Township 15 south, Range 04 west, projected), in the USGS *La Jolla* Quadrangle. Please find enclosed sections of the USGS *La Jolla* Quadrangle map on which the project is delineated.

The Sacred Lands File search came back positive for results in the *La Jolla* Quadrangle. The Native American Heritage Commission requested that we consult with you directly regarding the potential for the presence of Native American cultural resources that may be impacted by this project. If you do have information to provide regarding any resources on or near the project, please contact Brian Smith or myself at (858) 484-0915, or contact the County of San Diego directly. We would like to extend our thanks for your response regarding this issue.

Sincerely,

Tracy A. Stropes, M.A., RPA  
Senior Project Archaeologist  
tstropes@bfsa-ca.com

Attachment:

USGS 7.5-minute *La Jolla* topographic map with project area delineated



August 30, 2017

Javaughn Miller  
Tribal Administrator  
La Posta Band of Mission Indians  
8 Crestwood Road  
Boulevard, California 91905

Subject: Information regarding Native American cultural resources on or near the 7727 Lookout Drive Project, La Jolla, San Diego County, California

Dear Mr. Miller:

This inquiry is requesting information you may have regarding the existence of Native American cultural resources on or near the 7727 Lookout Drive Project. The information you provide will be used to assess areas of potential adverse impact within the proposed project's Area of Potential Effect (APE). Any information you might provide will be kept confidential and will not be divulged to the public.

The project is in San Diego County, California, and includes the residential development of three lots (a total of .41 acres). The project area may be found at 7727 Lookout Drive in La Jolla, California. Specifically, this project is located in the Pueblo Land Grant of San Diego (Township 15 south, Range 04 west, projected), in the USGS *La Jolla* Quadrangle. Please find enclosed sections of the USGS *La Jolla* Quadrangle map on which the project is delineated.

The Sacred Lands File search came back positive for results in the *La Jolla* Quadrangle. The Native American Heritage Commission requested that we consult with you directly regarding the potential for the presence of Native American cultural resources that may be impacted by this project. If you do have information to provide regarding any resources on or near the project, please contact Brian Smith or myself at (858) 484-0915, or contact the County of San Diego directly. We would like to extend our thanks for your response regarding this issue.

Sincerely,

Tracy A. Stropes, M.A., RPA  
Senior Project Archaeologist  
tstropes@bfsa-ca.com

Attachment:

USGS 7.5-minute *La Jolla* topographic map with project area delineated



August 30, 2017

John Flores  
Environmental Coordinator  
San Pasqual Band of Mission Indians  
P.O. Box 365  
Valley Center, California 92082

Subject: Information regarding Native American cultural resources on or near the 7727 Lookout Drive Project, La Jolla, San Diego County, California

Dear Mr. Flores:

This inquiry is requesting information you may have regarding the existence of Native American cultural resources on or near the 7727 Lookout Drive Project. The information you provide will be used to assess areas of potential adverse impact within the proposed project's Area of Potential Effect (APE). Any information you might provide will be kept confidential and will not be divulged to the public.

The project is in San Diego County, California, and includes the residential development of three lots (a total of .41 acres). The project area may be found at 7727 Lookout Drive in La Jolla, California. Specifically, this project is located in the Pueblo Land Grant of San Diego (Township 15 south, Range 04 west, projected), in the USGS *La Jolla* Quadrangle. Please find enclosed sections of the USGS *La Jolla* Quadrangle map on which the project is delineated.

The Sacred Lands File search came back positive for results in the *La Jolla* Quadrangle. The Native American Heritage Commission requested that we consult with you directly regarding the potential for the presence of Native American cultural resources that may be impacted by this project. If you do have information to provide regarding any resources on or near the project, please contact Brian Smith or myself at (858) 484-0915, or contact the County of San Diego directly. We would like to extend our thanks for your response regarding this issue.

Sincerely,

Tracy A. Stropes, M.A., RPA  
Senior Project Archaeologist  
tstropes@bfsa-ca.com

Attachment:

USGS 7.5-minute *La Jolla* topographic map with project area delineated



August 30, 2017

Julie Hagen  
Viejas Band of Kumeyaay Indians  
1 Viejas Grade Road  
Alpine, California 91901

Subject: Information regarding Native American cultural resources on or near the 7727 Lookout Drive Project, La Jolla, San Diego County, California

Dear Ms. Hagen:

This inquiry is requesting information you may have regarding the existence of Native American cultural resources on or near the 7727 Lookout Drive Project. The information you provide will be used to assess areas of potential adverse impact within the proposed project's Area of Potential Effect (APE). Any information you might provide will be kept confidential and will not be divulged to the public.

The project is in San Diego County, California, and includes the residential development of three lots (a total of .41 acres). The project area may be found at 7727 Lookout Drive in La Jolla, California. Specifically, this project is located in the Pueblo Land Grant of San Diego (Township 15 south, Range 04 west, projected), in the USGS *La Jolla* Quadrangle. Please find enclosed sections of the USGS *La Jolla* Quadrangle map on which the project is delineated.

The Sacred Lands File search came back positive for results in the *La Jolla* Quadrangle. The Native American Heritage Commission requested that we consult with you directly regarding the potential for the presence of Native American cultural resources that may be impacted by this project. If you do have information to provide regarding any resources on or near the project, please contact Brian Smith or myself at (858) 484-0915, or contact the County of San Diego directly. We would like to extend our thanks for your response regarding this issue.

Sincerely,

Tracy A. Stropes, M.A., RPA  
Senior Project Archaeologist  
tstropes@bfsa-ca.com

Attachment:

USGS 7.5-minute *La Jolla* topographic map with project area delineated





August 30, 2017

Lisa Haws  
Cultural Resources Manager  
Sycuan Band of the Kumeyaay Nation  
1 Kwaaypaay Court  
El Cajon, California 92019

Subject: Information regarding Native American cultural resources on or near the 7727 Lookout Drive Project, La Jolla, San Diego County, California

Dear Ms. Haws:

This inquiry is requesting information you may have regarding the existence of Native American cultural resources on or near the 7727 Lookout Drive Project. The information you provide will be used to assess areas of potential adverse impact within the proposed project's Area of Potential Effect (APE). Any information you might provide will be kept confidential and will not be divulged to the public.

The project is in San Diego County, California, and includes the residential development of three lots (a total of .41 acres). The project area may be found at 7727 Lookout Drive in La Jolla, California. Specifically, this project is located in the Pueblo Land Grant of San Diego (Township 15 south, Range 04 west, projected), in the USGS *La Jolla* Quadrangle. Please find enclosed sections of the USGS *La Jolla* Quadrangle map on which the project is delineated.

The Sacred Lands File search came back positive for results in the *La Jolla* Quadrangle. The Native American Heritage Commission requested that we consult with you directly regarding the potential for the presence of Native American cultural resources that may be impacted by this project. If you do have information to provide regarding any resources on or near the project, please contact Brian Smith or myself at (858) 484-0915, or contact the County of San Diego directly. We would like to extend our thanks for your response regarding this issue.

Sincerely,

Tracy A. Stropes, M.A., RPA  
Senior Project Archaeologist  
tstropes@bfsa-ca.com

Attachment:

USGS 7.5-minute *La Jolla* topographic map with project area delineated



August 30, 2017

Mario Morales  
Cultural Resources Representative  
Mesa Grande Band of Mission Indians  
35008 Pala Temecula Road, PMB 366  
Pala, California 92059

Subject: Information regarding Native American cultural resources on or near the 7727 Lookout Drive Project, La Jolla, San Diego County, California

Dear Mr. Morales:

This inquiry is requesting information you may have regarding the existence of Native American cultural resources on or near the 7727 Lookout Drive Project. The information you provide will be used to assess areas of potential adverse impact within the proposed project's Area of Potential Effect (APE). Any information you might provide will be kept confidential and will not be divulged to the public.

The project is in San Diego County, California, and includes the residential development of three lots (a total of .41 acres). The project area may be found at 7727 Lookout Drive in La Jolla, California. Specifically, this project is located in the Pueblo Land Grant of San Diego (Township 15 south, Range 04 west, projected), in the USGS *La Jolla* Quadrangle. Please find enclosed sections of the USGS *La Jolla* Quadrangle map on which the project is delineated.

The Sacred Lands File search came back positive for results in the *La Jolla* Quadrangle. The Native American Heritage Commission requested that we consult with you directly regarding the potential for the presence of Native American cultural resources that may be impacted by this project. If you do have information to provide regarding any resources on or near the project, please contact Brian Smith or myself at (858) 484-0915, or contact the County of San Diego directly. We would like to extend our thanks for your response regarding this issue.

Sincerely,

Tracy A. Stropes, M.A., RPA  
Senior Project Archaeologist  
tstropes@bfsa-ca.com

Attachment:

USGS 7.5-minute *La Jolla* topographic map with project area delineated



August 30, 2017

Michael Garcia  
Vice Chairperson  
Ewiiapaayp Tribal Office  
4054 Willows Road  
Alpine, California 91901

Subject: Information regarding Native American cultural resources on or near the 7727 Lookout Drive Project, La Jolla, San Diego County, California

Dear Mr. Garcia:

This inquiry is requesting information you may have regarding the existence of Native American cultural resources on or near the 7727 Lookout Drive Project. The information you provide will be used to assess areas of potential adverse impact within the proposed project's Area of Potential Effect (APE). Any information you might provide will be kept confidential and will not be divulged to the public.

The project is in San Diego County, California, and includes the residential development of three lots (a total of .41 acres). The project area may be found at 7727 Lookout Drive in La Jolla, California. Specifically, this project is located in the Pueblo Land Grant of San Diego (Township 15 south, Range 04 west, projected), in the USGS *La Jolla* Quadrangle. Please find enclosed sections of the USGS *La Jolla* Quadrangle map on which the project is delineated.

The Sacred Lands File search came back positive for results in the *La Jolla* Quadrangle. The Native American Heritage Commission requested that we consult with you directly regarding the potential for the presence of Native American cultural resources that may be impacted by this project. If you do have information to provide regarding any resources on or near the project, please contact Brian Smith or myself at (858) 484-0915, or contact the County of San Diego directly. We would like to extend our thanks for your response regarding this issue.

Sincerely,

Tracy A. Stropes, M.A., RPA  
Senior Project Archaeologist  
tstropes@bfsa-ca.com

Attachment:

USGS 7.5-minute *La Jolla* topographic map with project area delineated



August 30, 2017

Nick Elliott  
Cultural Resources Coordinator  
Manzanita Band of Kumeyaay Nation  
P.O. Box 1302  
Boulevard, California 91905

Subject: Information regarding Native American cultural resources on or near the 7727 Lookout Drive Project, La Jolla, San Diego County, California

Dear Mr. Elliott:

This inquiry is requesting information you may have regarding the existence of Native American cultural resources on or near the 7727 Lookout Drive Project. The information you provide will be used to assess areas of potential adverse impact within the proposed project's Area of Potential Effect (APE). Any information you might provide will be kept confidential and will not be divulged to the public.

The project is in San Diego County, California, and includes the residential development of three lots (a total of .41 acres). The project area may be found at 7727 Lookout Drive in La Jolla, California. Specifically, this project is located in the Pueblo Land Grant of San Diego (Township 15 south, Range 04 west, projected), in the USGS *La Jolla* Quadrangle. Please find enclosed sections of the USGS *La Jolla* Quadrangle map on which the project is delineated.

The Sacred Lands File search came back positive for results in the *La Jolla* Quadrangle. The Native American Heritage Commission requested that we consult with you directly regarding the potential for the presence of Native American cultural resources that may be impacted by this project. If you do have information to provide regarding any resources on or near the project, please contact Brian Smith or myself at (858) 484-0915, or contact the County of San Diego directly. We would like to extend our thanks for your response regarding this issue.

Sincerely,

Tracy A. Stropes, M.A., RPA  
Senior Project Archaeologist  
tstropes@bfsa-ca.com

Attachment:

USGS 7.5-minute *La Jolla* topographic map with project area delineated



August 30, 2017

Ralph Goff  
Chairperson  
Campo Band of Mission Indians  
36190 Church Road, Suite 1  
Campo, California 91906

Subject: Information regarding Native American cultural resources on or near the 7727 Lookout Drive Project, La Jolla, San Diego County, California

Dear Mr. Goff:

This inquiry is requesting information you may have regarding the existence of Native American cultural resources on or near the 7727 Lookout Drive Project. The information you provide will be used to assess areas of potential adverse impact within the proposed project's Area of Potential Effect (APE). Any information you might provide will be kept confidential and will not be divulged to the public.

The project is in San Diego County, California, and includes the residential development of three lots (a total of .41 acres). The project area may be found at 7727 Lookout Drive in La Jolla, California. Specifically, this project is located in the Pueblo Land Grant of San Diego (Township 15 south, Range 04 west, projected), in the USGS *La Jolla* Quadrangle. Please find enclosed sections of the USGS *La Jolla* Quadrangle map on which the project is delineated.

The Sacred Lands File search came back positive for results in the *La Jolla* Quadrangle. The Native American Heritage Commission requested that we consult with you directly regarding the potential for the presence of Native American cultural resources that may be impacted by this project. If you do have information to provide regarding any resources on or near the project, please contact Brian Smith or myself at (858) 484-0915, or contact the County of San Diego directly. We would like to extend our thanks for your response regarding this issue.

Sincerely,

Tracy A. Stropes, M.A., RPA  
Senior Project Archaeologist  
tstropes@bfsa-ca.com

Attachment:

USGS 7.5-minute *La Jolla* topographic map with project area delineated



August 30, 2017

Rebecca Osuna  
Chairperson  
Inaja Band of Mission Indians  
2005 South Escondido Boulevard  
Escondido, California 92025

Subject: Information regarding Native American cultural resources on or near the 7727 Lookout Drive Project, La Jolla, San Diego County, California

Dear Ms. Osuna:

This inquiry is requesting information you may have regarding the existence of Native American cultural resources on or near the 7727 Lookout Drive Project. The information you provide will be used to assess areas of potential adverse impact within the proposed project's Area of Potential Effect (APE). Any information you might provide will be kept confidential and will not be divulged to the public.

The project is in San Diego County, California, and includes the residential development of three lots (a total of .41 acres). The project area may be found at 7727 Lookout Drive in La Jolla, California. Specifically, this project is located in the Pueblo Land Grant of San Diego (Township 15 south, Range 04 west, projected), in the USGS *La Jolla* Quadrangle. Please find enclosed sections of the USGS *La Jolla* Quadrangle map on which the project is delineated.

The Sacred Lands File search came back positive for results in the *La Jolla* Quadrangle. The Native American Heritage Commission requested that we consult with you directly regarding the potential for the presence of Native American cultural resources that may be impacted by this project. If you do have information to provide regarding any resources on or near the project, please contact Brian Smith or myself at (858) 484-0915, or contact the County of San Diego directly. We would like to extend our thanks for your response regarding this issue.

Sincerely,

Tracy A. Stropes, M.A., RPA  
Senior Project Archaeologist  
tstropes@bfsa-ca.com

Attachment:

USGS 7.5-minute *La Jolla* topographic map with project area delineated



August 30, 2017

Robert Pinto  
Chairperson  
Ewiiapaayp Tribal Office  
4054 Willows Road  
Alpine, California 91901

Subject: Information regarding Native American cultural resources on or near the 7727 Lookout Drive Project, La Jolla, San Diego County, California

Dear Mr. Pinto:

This inquiry is requesting information you may have regarding the existence of Native American cultural resources on or near the 7727 Lookout Drive Project. The information you provide will be used to assess areas of potential adverse impact within the proposed project's Area of Potential Effect (APE). Any information you might provide will be kept confidential and will not be divulged to the public.

The project is in San Diego County, California, and includes the residential development of three lots (a total of .41 acres). The project area may be found at 7727 Lookout Drive in La Jolla, California. Specifically, this project is located in the Pueblo Land Grant of San Diego (Township 15 south, Range 04 west, projected), in the USGS *La Jolla* Quadrangle. Please find enclosed sections of the USGS *La Jolla* Quadrangle map on which the project is delineated.

The Sacred Lands File search came back positive for results in the *La Jolla* Quadrangle. The Native American Heritage Commission requested that we consult with you directly regarding the potential for the presence of Native American cultural resources that may be impacted by this project. If you do have information to provide regarding any resources on or near the project, please contact Brian Smith or myself at (858) 484-0915, or contact the County of San Diego directly. We would like to extend our thanks for your response regarding this issue.

Sincerely,

Tracy A. Stropes, M.A., RPA  
Senior Project Archaeologist  
tstropes@bfsa-ca.com

Attachment:

USGS 7.5-minute *La Jolla* topographic map with project area delineated



August 30, 2017

Robert Welch  
Chairperson  
Viejas Band of Kumeyaay Indians  
1 Viejas Grade Road  
Alpine, California 91901

Subject: Information regarding Native American cultural resources on or near the 7727 Lookout Drive Project, La Jolla, San Diego County, California

Dear Mr. Welch:

This inquiry is requesting information you may have regarding the existence of Native American cultural resources on or near the 7727 Lookout Drive Project. The information you provide will be used to assess areas of potential adverse impact within the proposed project's Area of Potential Effect (APE). Any information you might provide will be kept confidential and will not be divulged to the public.

The project is in San Diego County, California, and includes the residential development of three lots (a total of .41 acres). The project area may be found at 7727 Lookout Drive in La Jolla, California. Specifically, this project is located in the Pueblo Land Grant of San Diego (Township 15 south, Range 04 west, projected), in the USGS *La Jolla* Quadrangle. Please find enclosed sections of the USGS *La Jolla* Quadrangle map on which the project is delineated.

The Sacred Lands File search came back positive for results in the *La Jolla* Quadrangle. The Native American Heritage Commission requested that we consult with you directly regarding the potential for the presence of Native American cultural resources that may be impacted by this project. If you do have information to provide regarding any resources on or near the project, please contact Brian Smith or myself at (858) 484-0915, or contact the County of San Diego directly. We would like to extend our thanks for your response regarding this issue.

Sincerely,

Tracy A. Stropes, M.A., RPA  
Senior Project Archaeologist  
tstropes@bfsa-ca.com

Attachment:

USGS 7.5-minute *La Jolla* topographic map with project area delineated





August 30, 2017

Virgil Oyos  
Chairperson  
Mesa Grande Band of Mission Indians  
P.O. Box 270  
Santa Ysabel, California 92070

Subject: Information regarding Native American cultural resources on or near the 7727 Lookout Drive Project, La Jolla, San Diego County, California

Dear Mr. Oyos:

This inquiry is requesting information you may have regarding the existence of Native American cultural resources on or near the 7727 Lookout Drive Project. The information you provide will be used to assess areas of potential adverse impact within the proposed project's Area of Potential Effect (APE). Any information you might provide will be kept confidential and will not be divulged to the public.

The project is in San Diego County, California, and includes the residential development of three lots (a total of .41 acres). The project area may be found at 7727 Lookout Drive in La Jolla, California. Specifically, this project is located in the Pueblo Land Grant of San Diego (Township 15 south, Range 04 west, projected), in the USGS *La Jolla* Quadrangle. Please find enclosed sections of the USGS *La Jolla* Quadrangle map on which the project is delineated.

The Sacred Lands File search came back positive for results in the *La Jolla* Quadrangle. The Native American Heritage Commission requested that we consult with you directly regarding the potential for the presence of Native American cultural resources that may be impacted by this project. If you do have information to provide regarding any resources on or near the project, please contact Brian Smith or myself at (858) 484-0915, or contact the County of San Diego directly. We would like to extend our thanks for your response regarding this issue.

Sincerely,

Tracy A. Stropes, M.A., RPA  
Senior Project Archaeologist  
tstropes@bfsa-ca.com

Attachment:

USGS 7.5-minute *La Jolla* topographic map with project area delineated



August 30, 2017

Virgil Perez  
Chairperson  
Iipay Nation of Santa Ysabel  
P.O. Box 130  
Santa Ysabel, California 92070

Subject: Information regarding Native American cultural resources on or near the 7727 Lookout Drive Project, La Jolla, San Diego County, California

Dear Mr. Perez:

This inquiry is requesting information you may have regarding the existence of Native American cultural resources on or near the 7727 Lookout Drive Project. The information you provide will be used to assess areas of potential adverse impact within the proposed project's Area of Potential Effect (APE). Any information you might provide will be kept confidential and will not be divulged to the public.

The project is in San Diego County, California, and includes the residential development of three lots (a total of .41 acres). The project area may be found at 7727 Lookout Drive in La Jolla, California. Specifically, this project is located in the Pueblo Land Grant of San Diego (Township 15 south, Range 04 west, projected), in the USGS *La Jolla* Quadrangle. Please find enclosed sections of the USGS *La Jolla* Quadrangle map on which the project is delineated.

The Sacred Lands File search came back positive for results in the *La Jolla* Quadrangle. The Native American Heritage Commission requested that we consult with you directly regarding the potential for the presence of Native American cultural resources that may be impacted by this project. If you do have information to provide regarding any resources on or near the project, please contact Brian Smith or myself at (858) 484-0915, or contact the County of San Diego directly. We would like to extend our thanks for your response regarding this issue.

Sincerely,

Tracy A. Stropes, M.A., RPA  
Senior Project Archaeologist  
tstropes@bfsa-ca.com

Attachment:

USGS 7.5-minute *La Jolla* topographic map with project area delineated

# VIEJAS

TRIBAL GOVERNMENT

P.O. Box 908  
Alpine, CA 91903  
#1 Viejas Grade Road  
Alpine, CA 91901

September 6, 2017

Phone: 6194453810  
Fax: 6194455337  
viejas.com

Tracy A. Stropes  
Senior Project Archaeologist  
Brian F. Smith and Associates, Inc.  
14010 Poway Road, Suite A  
Poway, CA 92064

**RE: 7727 Lookout Drive Project**

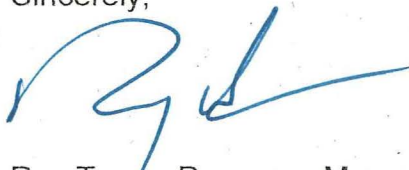
Dear Mr. Stropes,

The Viejas Band of Kumeyaay Indians ("Viejas") has reviewed the proposed project and at this time we have determined that the project site has cultural significance or ties to Viejas.

Viejas Band request that a Kumeyaay Cultural Monitor be on site for ground disturbing activities to inform us of any new developments such as inadvertent discovery of cultural artifacts, cremation sites, or human remains.

Please call me at 619-659-2312 or Ernest Pingleton at 619-659-2314 or email, [rteran@viejas-nsn.gov](mailto:rteran@viejas-nsn.gov) or [epingleton@viejas-nsn.gov](mailto:epingleton@viejas-nsn.gov) , for scheduling. Thank you.

Sincerely,



Ray Teran, Resource Management  
VIEJAS BAND OF KUMEYAAY INDIANS