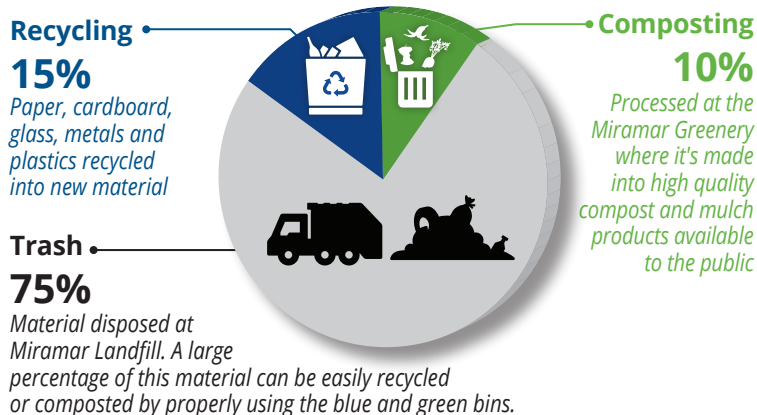


## 27 Million Collection Stops and Counting

Most people will agree that 2020 has been a year like no other. One thing that has remained consistent has been the collection of recyclables, yard waste and trash. The City's Environmental Services Collection Division has maintained its commitment to providing the highest level of customer service even under difficult circumstances. With so many people staying and working from home, the amount of recyclable materials, yard waste and trash generated this year has risen to **473,000 tons** which marks an **11% increase** over last year's overall tonnage.


What we throw away, recycle and compost:



While the amount of material being recycled in the blue bin is up this year, unfortunately, 20% of that material is not recyclable (garden hoses, plastic bags, clothes) and is considered trash. These materials must be sorted out by machinery and people, which impacts operational efficiency and drives up processing costs.


### Help Us Improve Your Collection Pick Up

Each year, Collection Services sanitation drivers make more than 27 million collection stops. To help drivers operate efficiently, please do the following:

- Make sure bins are spaced 3 feet from each other and away from cars and other obstructions. 

- Place containers at the curb or point of collection by 6 a.m. and remove by 6 p.m. If not collected by 6 p.m., please keep containers curbside.
- Missed collection: Please check delayed collection areas at Environmental Services website at [sandiego.gov/environmental-services/collection-status](http://sandiego.gov/environmental-services/collection-status). If your collection is not delayed, call Environmental Services customer service at 858-694-7000 or [sandiego.gov/get-it-done](http://sandiego.gov/get-it-done).
- Do not overload bins, and promptly replace broken or damaged bins.

The City has found that residents place thousands of tons of recyclable material (cardboard, paper, metals, glass and plastic containers) in the black bin which ends up in the landfill. Please make our collection services cost effective and efficient by doing the following:

- Check the What Goes Where guide before placing things in the blue or black bin.
- Do not place film plastic (plastic bags and dry cleaning bags) in the blue bin. Film plastic jams sorting equipment.
- Flatten clean cardboard to save valuable bin space. Clean cardboard should only be placed in the blue bin. 
- Do not place electronics or batteries in the blue or black bin. Lithium batteries can ignite and start fires by being in proximity to paper.
- Do not place personal protective equipment (masks and gloves) in the blue bin.

**Need extra bin space?** Additional trash bins (black) can be purchased for \$70 while recycling bins (blue) are free when picked up. Bins can be delivered for a \$25 fee (some restrictions may apply). For more information call 858-694-7000 or visit [sandiego.gov/ESD](http://sandiego.gov/ESD).

## Organics in the Waste Stream

Organic waste, such as food scraps and yard trimmings, account for a significant portion of California's waste stream. A waste characterization study performed in 2012 at Miramar Landfill analyzed what we throw away in San Diego. It showed that single family homes disposed approximately 150,000 tons of organic waste annually.

Left to decompose in landfills, organic waste releases methane, a gas that traps the sun's heat and warms the atmosphere. To address this issue, in 2016 California passed Senate Bill 1383 into law which aims at reducing methane that goes into the atmosphere.

This law establishes targets to achieve a 50% reduction in the level of statewide disposal of organic waste from the 2014 level by 2020, and a 75% reduction by 2025. As the City develops a strategy to meet these requirements, residents are urged to reduce the amount of food wasted and thrown away. This can be done through mindful purchasing, storing food in air-tight containers, and making sure leftovers are consumed before they go bad. These simple household changes can help save on food costs, minimize processing costs of organics and improve our environment.



# RECYCLING RESOURCES



## COMPOST

One of the best resources available to the public and businesses is the Miramar Greenery, where each year 100,000 tons of trees and yard trimmings are produced into high quality compost and mulch products.

Compost and mulch are rich in nutrients that can help build healthy soils for growing plants and retain moisture. To improve the soil in your garden, add compost into the ground by turning it at a depth of four to six inches or spread it on garden beds as a top dressing. Don't have a yard? Use compost to make your own potting mix.

City of San Diego residents can self-load two cubic yards of compost for **free**. To learn more about the Greenery visit: [sandiego.gov/environmental-services/miramar/greenery](http://sandiego.gov/environmental-services/miramar/greenery)



## CLOTHING AND HOUSEHOLD ITEMS

Consider selling or donating clothing and household items instead of throwing them away. There are several online apps and websites that allow people to post items for sale or give away for free. Another option is donating them. San Diego has a wide network of charitable organizations that will gladly accept clothing, blankets and usable household goods.



To find where you can take your belongings, visit [WasteFreeSD.org](http://WasteFreeSD.org), which is a recycling database of more than 200 household items. It has information on how to recycle clothing, textiles as well as things like batteries, cooking oil, tires and mattresses, just to name a few.



## HAZARDOUS MATERIALS

To find out where to take hazardous materials or other items visit [WasteFreeSD.org](http://WasteFreeSD.org)



### Paint

Most paint retailers accept leftover paint. Visit [Paintcare.org](http://Paintcare.org) for a list of locations near you.

### Motor oil, filters and car batteries

Most auto supply stores accept used motor oil. Visit [WasteFreeSD.org](http://WasteFreeSD.org) for a list of locations near you.



### City of San Diego Household Hazardous Waste Transfer Facility

City of San Diego residents can dispose of their household hazardous waste (HHW) at the City's Household Hazardous Waste Transfer Facility (HHWTF) located at the entrance to Miramar Landfill for free.

The HHWTF is only open on Saturday and an appointment is required. To learn more visit [sandiego.gov/environmental-services/ep/hazardous](http://sandiego.gov/environmental-services/ep/hazardous) To schedule an appointment call 858-694-7000 or visit [sandiego.gov/get-it-done](http://sandiego.gov/get-it-done)

The HHWTF accepts the following materials:

- Paint
- Motor oil
- Anti-freeze
- Poisons
- Pesticides
- Flammable liquids
- Batteries
- Light bulbs





## HOME COMPOSTING BIN

Flowers



Leaves



Grass Clippings



Shrub and Tree Trimmings



Fruit and Vegetable Scraps



Coffee Grounds and Eggshells



Take yard waste to



5180 Convoy Street

**NO**

Glass, Plastic Bags, Pet Poop, Plant Pots, Dirt, Rocks, Bricks and Plant Tags

Learn more at [RecyclingWorks.com](http://RecyclingWorks.com)



## RECYCLING EVERY OTHER WEEK

All Recyclables Empty, Dry and Loose

Aluminum and Steel Bottles and Cans



Aluminum Foil and Trays



Glass Bottles and Jars



Boxes and Cardboard



Mixed Paper and Shredded Paper (shredded paper must be in a paper bag)



Food and Beverage Paper Cartons



Plastic Bottles, Cups, Containers, Jugs, Trays, Buckets, Tubs and Toys, Styrofoam™ Packaging and Beverage Containers



**NO**

Plastic Bags, Plastic Wrap, Food or Liquid, Clothes, Hoses, Wires, Electronics, Hazardous Waste, Chemicals, Batteries, Compact Fluorescent Light Bulbs, and Compostable and Biodegradable Plastics



## TRASH EVERY WEEK

Hygiene Products, Diapers and Pet Waste



Dish and Glassware



Paper Plates, Cups and Takeout Boxes



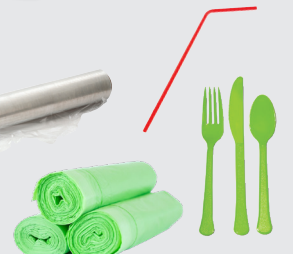
Tissues and Sanitizing Wipes



Plastic Bags, Wrappers and Film



Plastic Straws and Utensils Products Labeled "Compostable" or "Biodegradable"



**NO**

Electronics, Hazardous Waste, Chemicals, Batteries and Compact Fluorescent Light Bulbs





## GREENERY COMPOSTING EVERY OTHER WEEK

Automated OR Manual and Bundles

Grass Clippings



Flowers



Leaves



Wood



Untreated, Unpainted Wood



Shrub and Tree Trimmings



Undecorated Christmas Tree



## HOME COMPOSTING BIN

Flowers



Leaves



Grass Clippings



Shrub and Tree Trimmings



Fruit and Vegetable Scraps



Coffee Grounds and Eggshells



**NO**

Glass, Plastic Bags, Pet Poop, Plant Pots, Dirt, Rocks, Bricks and Plant Tags

Learn more at [RecyclingWorks.com](http://RecyclingWorks.com)



## RECYCLING EVERY OTHER WEEK

All Recyclables Empty, Dry and Loose

Aluminum and Steel Bottles and Cans



Aluminum Foil and Trays



Glass Bottles and Jars



Boxes and Cardboard



Mixed Paper and Shredded Paper  
*(shredded paper must be in a paper bag)*



Food and Beverage Paper Cartons



Plastic Bottles, Cups, Containers, Jugs, Trays, Buckets, Tubs and Toys, Styrofoam™ Packaging and Beverage Containers



**NO**

Plastic Bags, Plastic Wrap, Food or Liquid, Clothes, Hoses, Wires, Electronics, Hazardous Waste, Chemicals, Batteries, Compact Fluorescent Light Bulbs, and Compostable and Biodegradable Plastics



## TRASH EVERY WEEK

Hygiene Products, Diapers and Pet Waste



Dish and Glassware



Paper Plates, Cups and Takeout Boxes



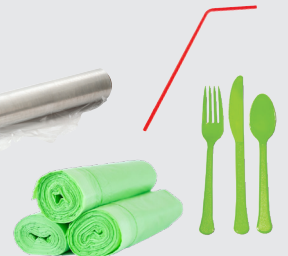
Tissues and Sanitizing Wipes



Plastic Bags, Wrappers and Film



Plastic Straws and Utensils Products Labeled "Compostable" or "Biodegradable"



**NO**

Electronics, Hazardous Waste, Chemicals, Batteries and Compact Fluorescent Light Bulbs