

# CITY HEIGHTS URBAN GREENING



**GREEN TEAM #3**



# **CITY HEIGHTS URBAN GREENING AGENDA**

**6:00PM Introduction**

**6:10PM Review of CHUG #1 Results**

**6:15PM Candidate Corridors**

- Commonly Traveled Streets**
- Confirming the Draft Candidate Corridors**
- Prioritizing Exercise**
- Discussion**

**7:00PM Green Tools (Design Solutions)**

- Discussion**

**7:30PM Walk Audit**

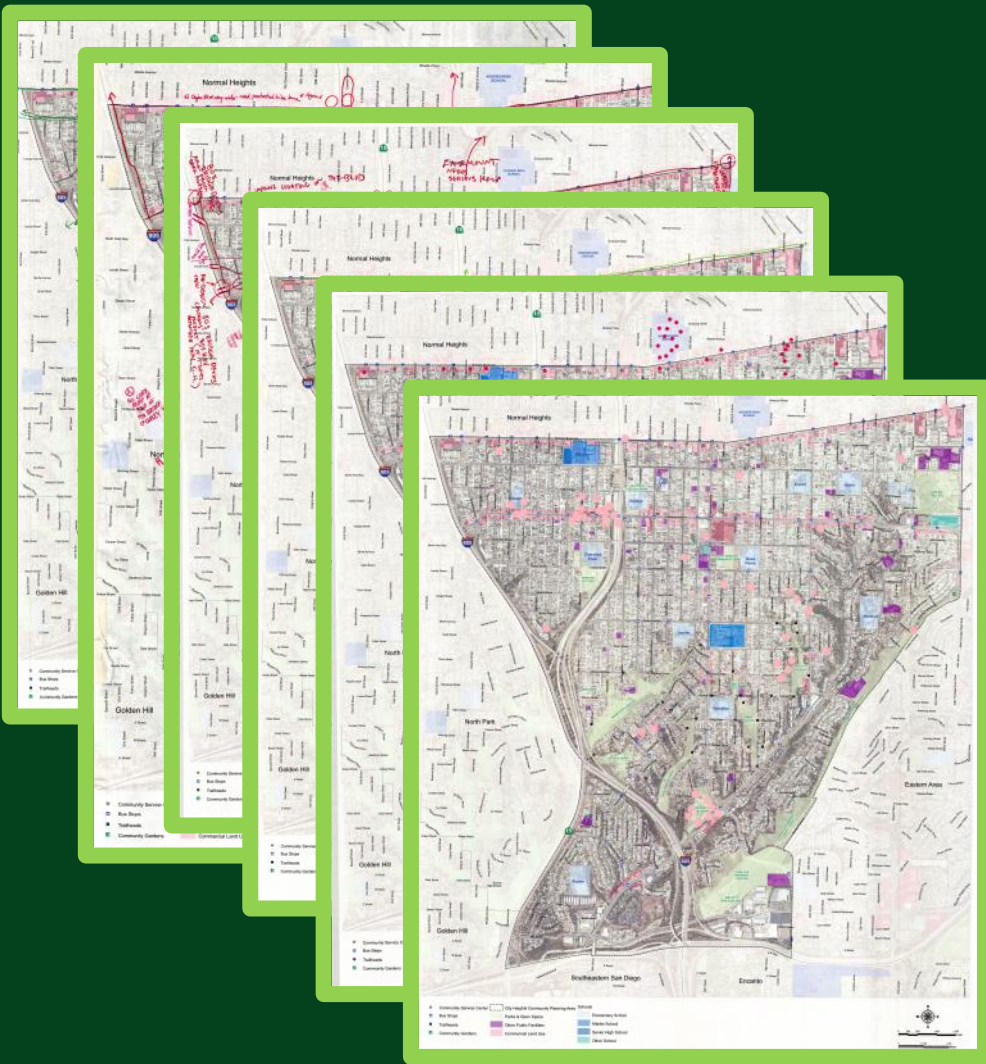
- Introduction: Walk San Diego**
- Summary of previous recommendations, actions**

**7:40PM Next Steps**

- CHUG #2 – May 11, 2013**

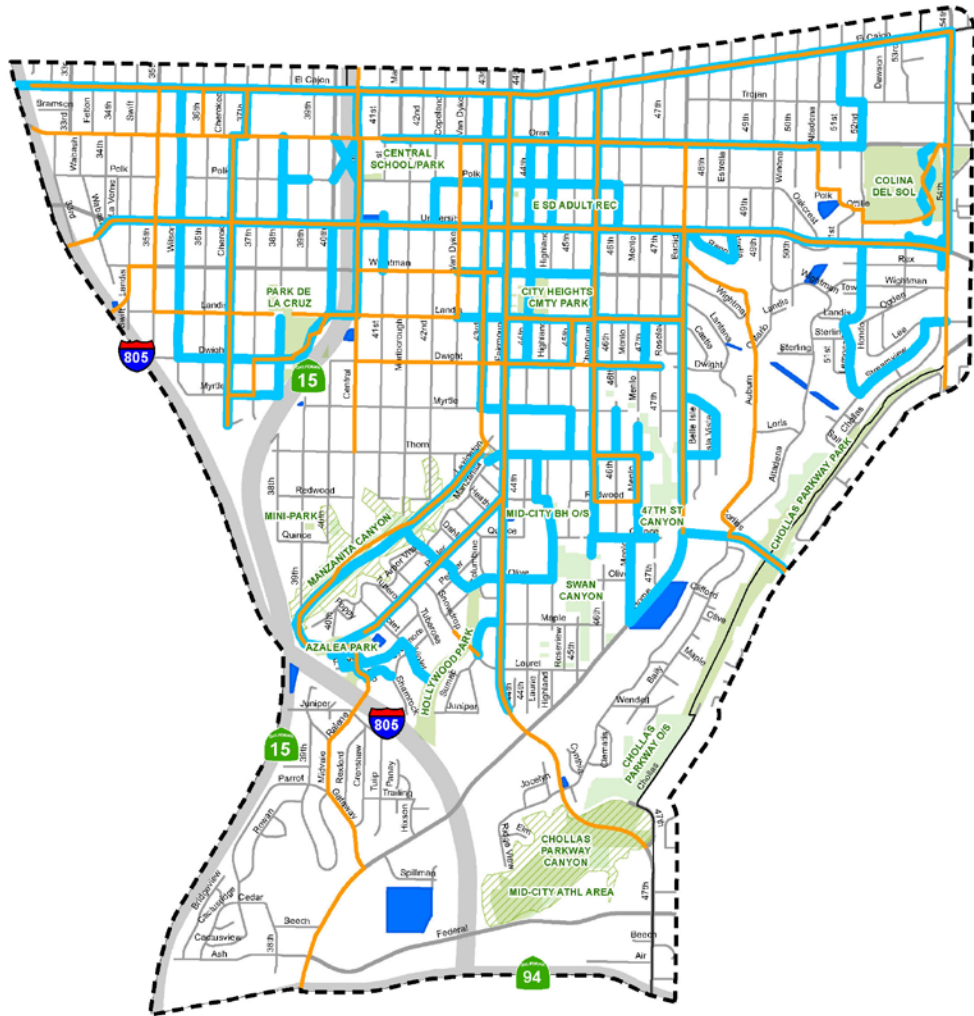
**7:45PM End**

# CHUG #1 Results

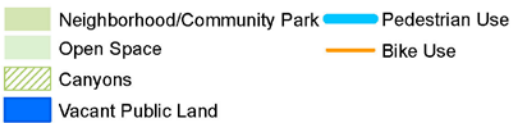




# Commonly Traveled Corridors

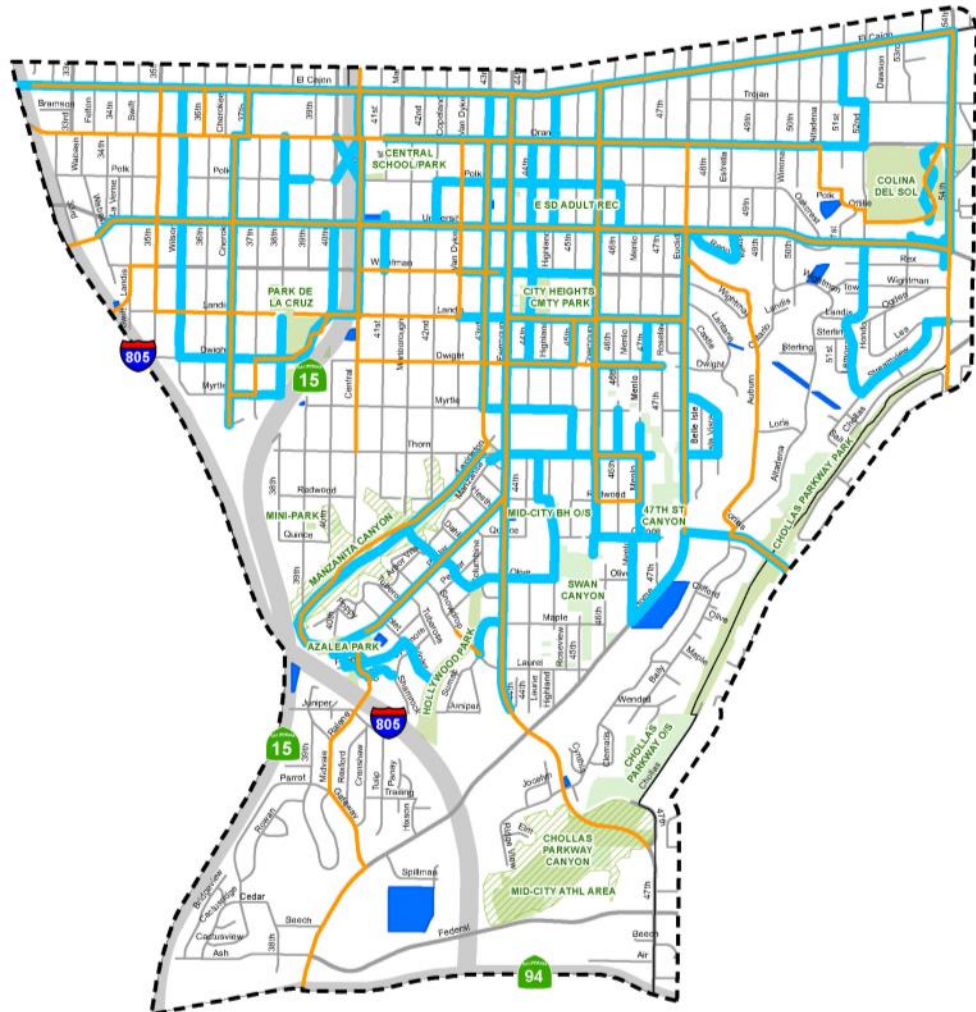


Bike Use	Ped Use
35th Street	
36th Street	
37th Street	37th Street
	38th Street
	40th Street
	41st Street
	42nd Street
43rd Street	43rd Street
	44th Street
45th Street	45th Street
	46th Street
	47th Street
51st Street	51st Street
52nd Place	52nd Street
54th Street	54th Street
Altadena Avenue	
Auburn Drive	
Central Avenue	Central Avenue
Chamone Avenue	Chamone Avenue
Cherokee Avenue	Cherokee Avenue
Corliss Street	
Dwight Street	Dwight Street
El Cajon Boulevard	El Cajon Boulevard
	Estrella Avenue
Euclid Avenue	Euclid Avenue
Fairmount Avenue	Fairmount Avenue
Gateway Drive	

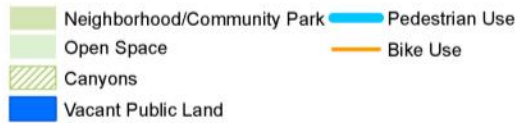




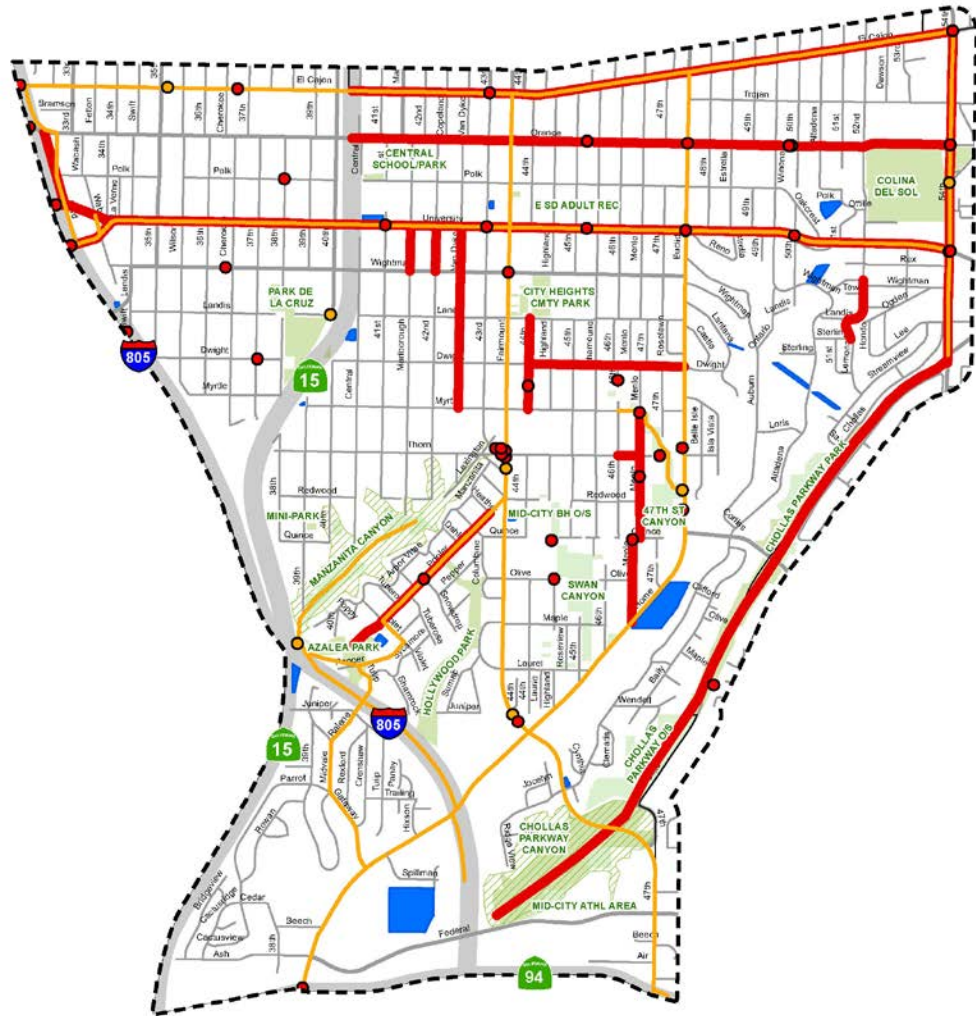
# Commonly Traveled Corridors



Bike Use	Ped Use
Home Avenue	Highland Avenue
	Home Avenue
	Isla Vista Drive
	Jamies Way
Landis Street	Landis Street
	Lea Street
	Lemona Avenue
Lexington Avenue	Lexington Avenue
Menlo Avenue	Menlo Avenue
Midvale Drive	
Myrtle Avenue	Myrtle Avenue
	Olive Street
Orange Avenue	Orange Avenue
Otilie Place	
	Pepper Drive
Polk Avenue	Polk Avenue
Poplar Street	Poplar Street
	Quince Street
Ralene Street	
Redwood Street	
	Reno Drive
	Streamview Drive
	Sumac Drive
Swift Avenue	
	Sycamore Drive
Thorn Street	Thorn Street
	Trojan Avenue
Tulip Street	Tulip Street
University Avenue	University Avenue
Van Dyke Avenue	
Wightman Street	Wightman Street
	Wilson Avenue



# Streets difficult to use

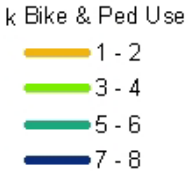
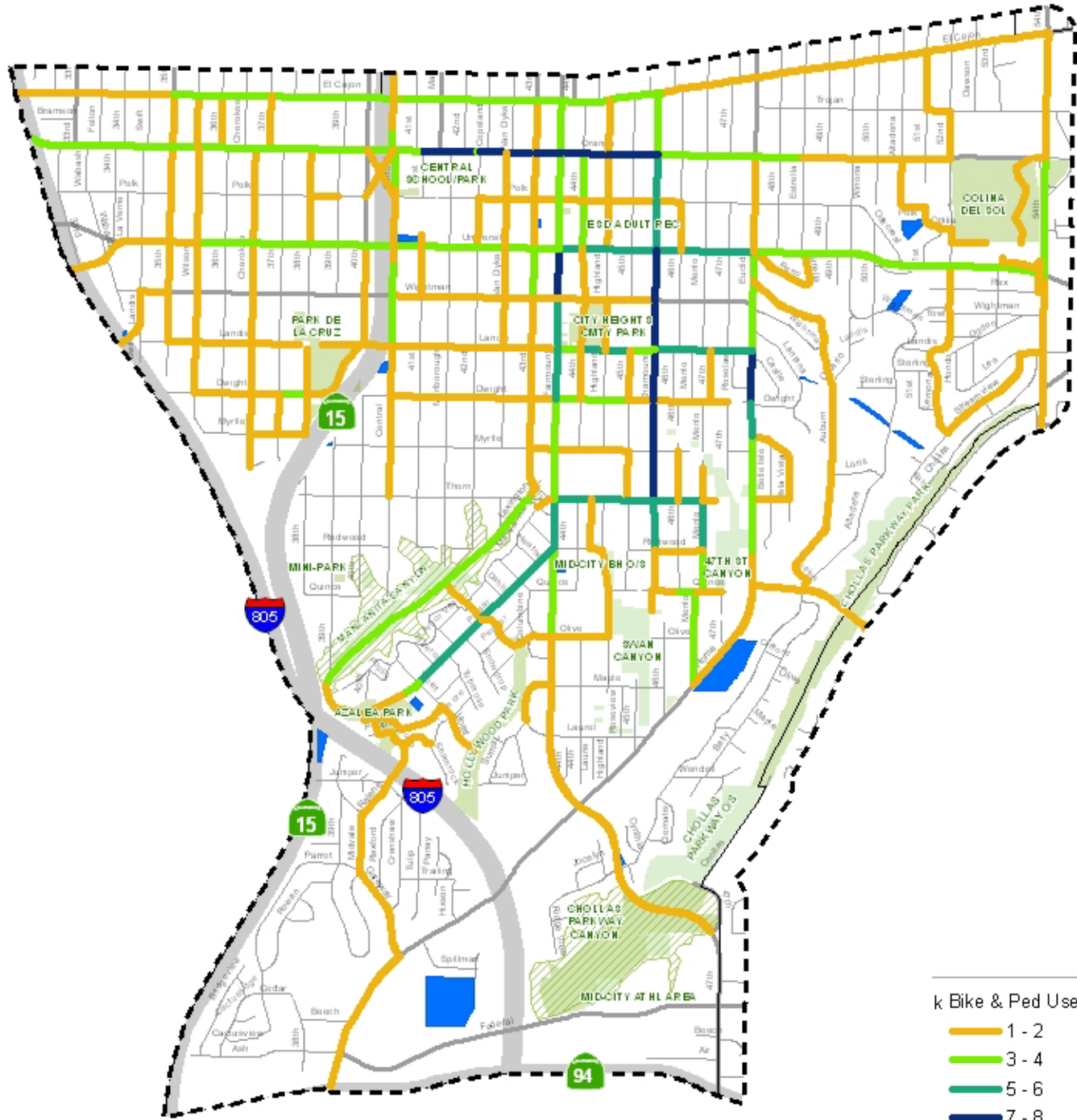


Bike Barrier	Ped Barrier
33rd Street	33rd Street
47th Street	42nd Street
54th Street	44th Street
El Cajon Boulevard	52nd Street
Euclid Avenue	54th Street
Fairmount Avenue	Dwight Street
Gateway Drive	El Cajon Boulevard
Home Avenue	Landis Street
Interstate 805 Nb	Lemona Avenue
Midvale Drive	Lincoln Avenue
Pepper Drive	Marlborough Avenue
Poplar Street	Menlo Avenue
Ralene Street	Orange Avenue
State Route 94 Wb	Poplar Street
Tulip Street	Quince Street
University Avenue	Thorn Street
Violet Street	University Avenue
Wabash Avenue	Van Dyke Avenue

- Neighborhood/Community Park
- Open Space
- Canyons
- Vacant Public Land
- Pedestrian Barrier
- Bike Barrier
- Ped Barrier
- Bike Barrier

# Commonly Traveled Corridors

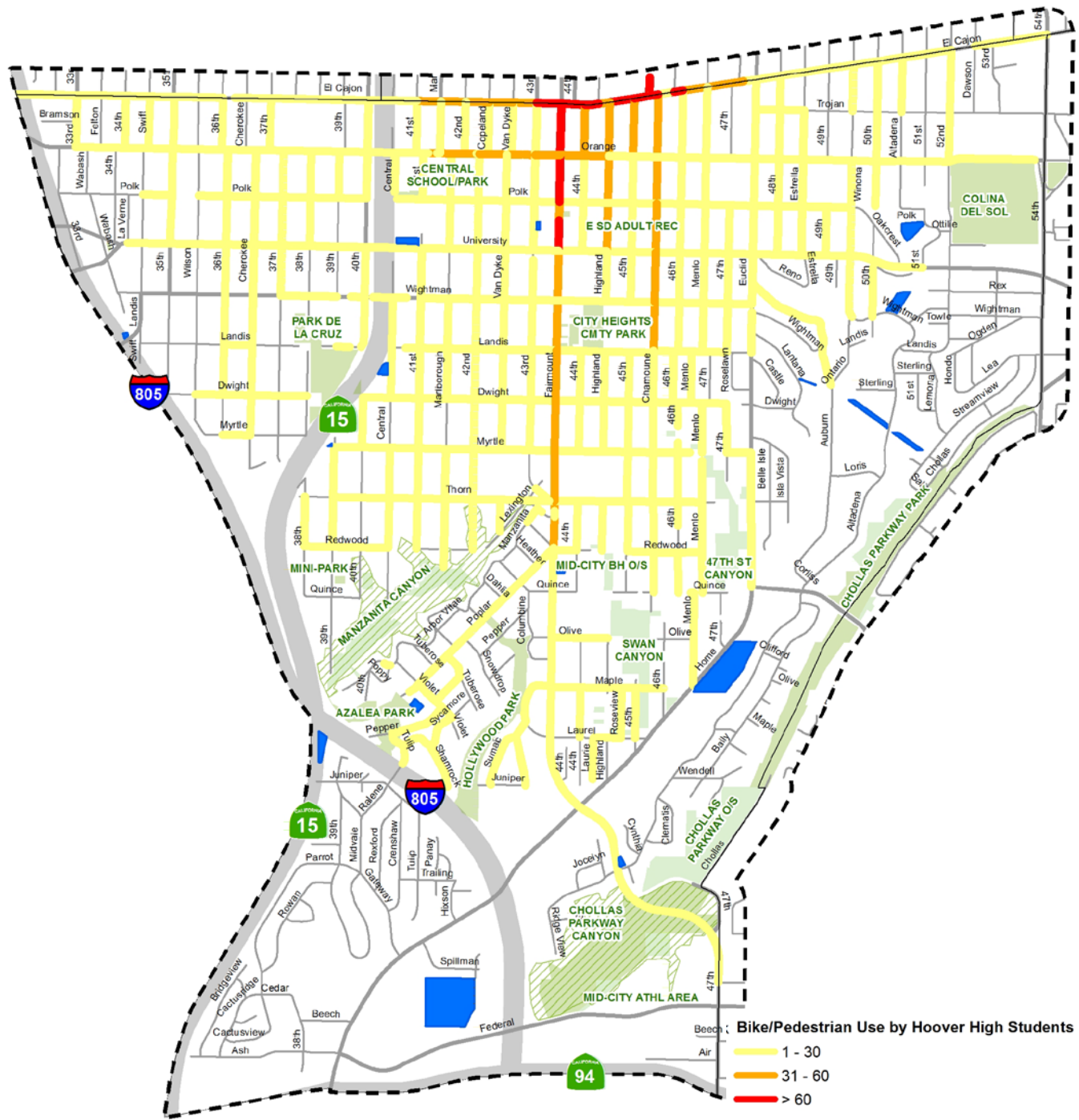
CHUG #1





# Commonly Traveled Corridors

## Hoover High Survey

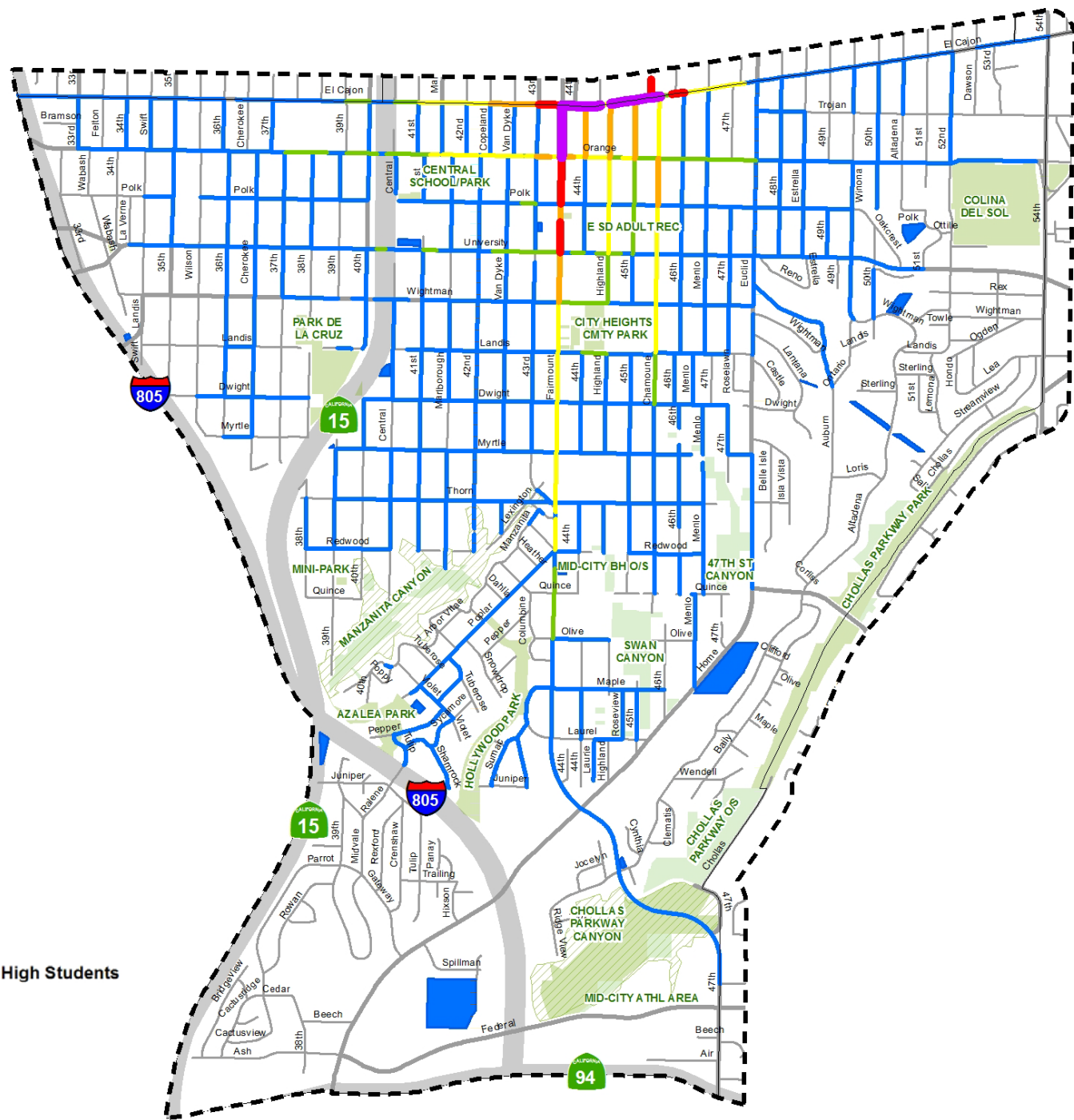


# Commonly Traveled Corridors

## Hoover High Survey

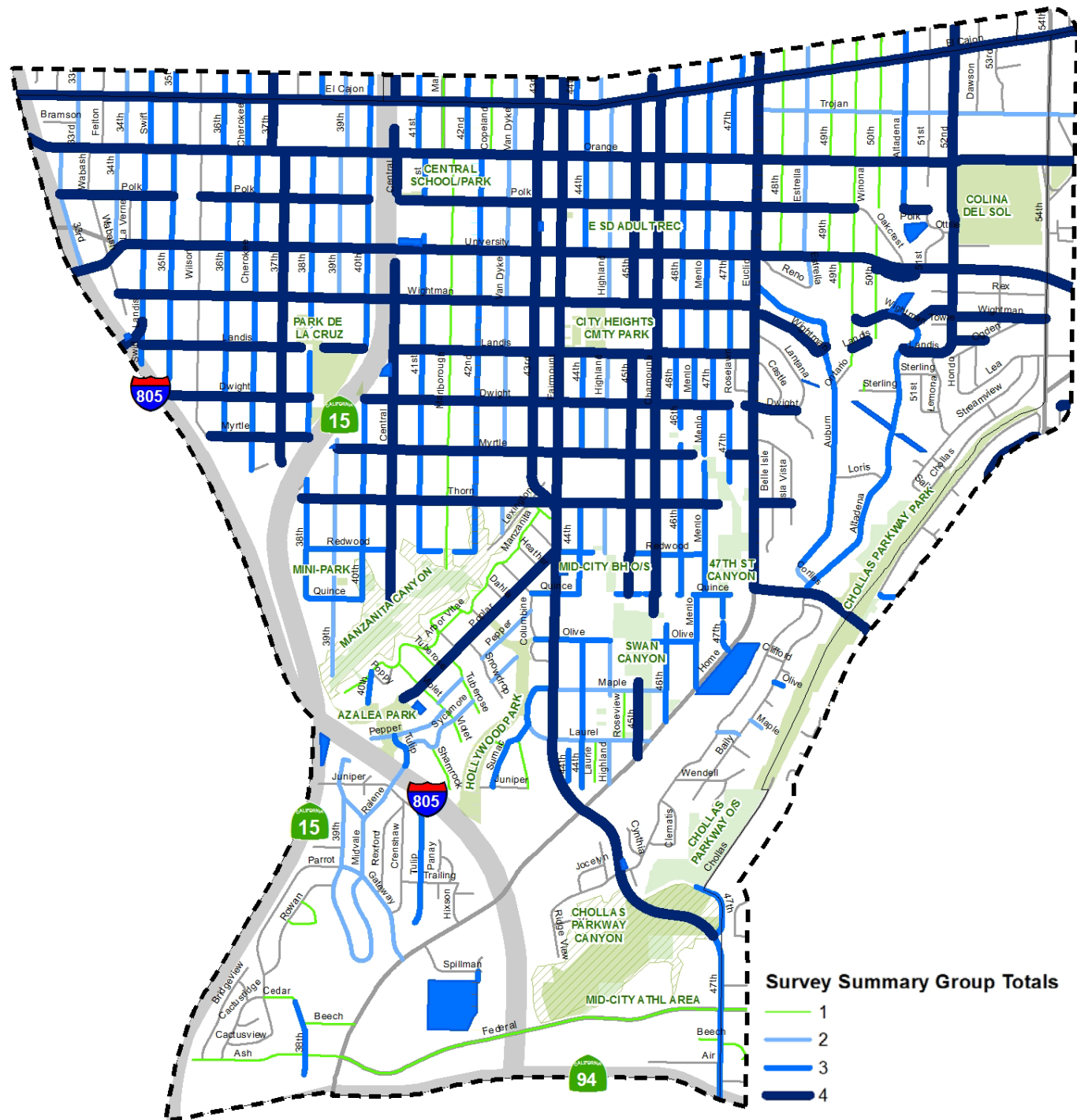
Bike/Pedestrian Use by Hoover High Students

- < 15
- 16 - 30
- 31 - 45
- 46 - 60
- 61 - 90
- > 90



# Commonly Traveled Corridors

## Analysis Summary





# Discussion

- Review the Commonly Traveled Corridors
- Highlight any changes – Deletions or additions

# CHUG #2 Process

Through the CHUG #1, numerous streets were identified as Commonly Traveled Streets (CTS)

## Where do we go from here?

- Identify commonly traveled streets (CTS)
  - These CTS will be included in the Urban Greening Plan as significant streets
- Focus of CHUG #2: Using the CTS, Prioritize streets that will be identified as draft community corridors
  - These community corridors will be looked at further on the Walk Audit
- Walk Audit – Identify specific design solutions for each community corridor
  - Previous studies provided by Walk San Diego have been included



# Candidate Corridors

- **Urban Forestry**

- Which commonly traveled streets should have a consistent feel in the tree and planting zone?
- Which streets have excess width that could be captured for green space?

- **Stormwater**

- Which streets are sloped well to capture drainage?
- Which streets are impervious and need changes to address runoff?

- **Connectivity (Mobility)**

- Which streets are active pedestrian and bike streets?

- **Open Space**

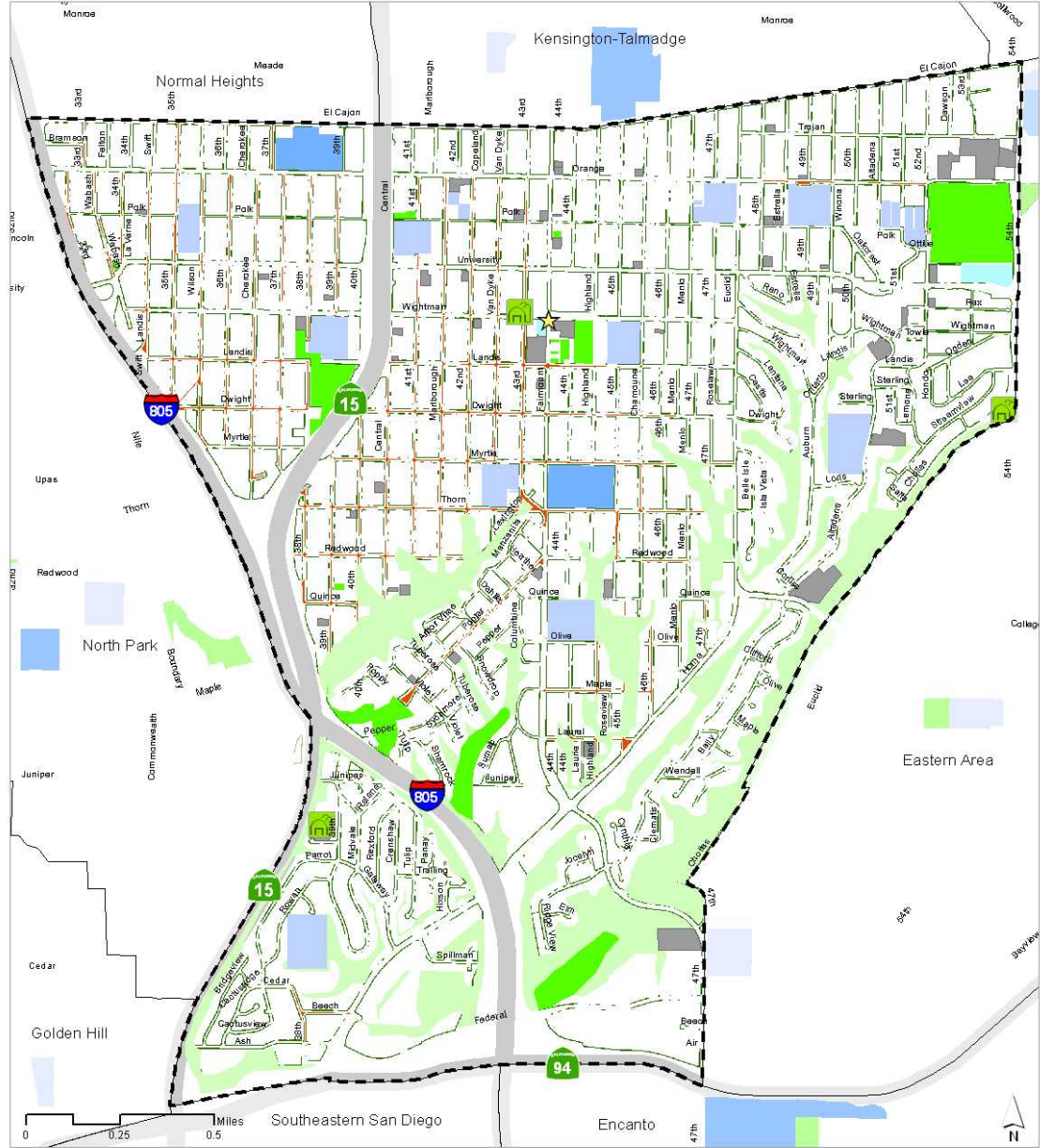
- Which streets are access points for the canyons, parks?





# Candidate Corridors

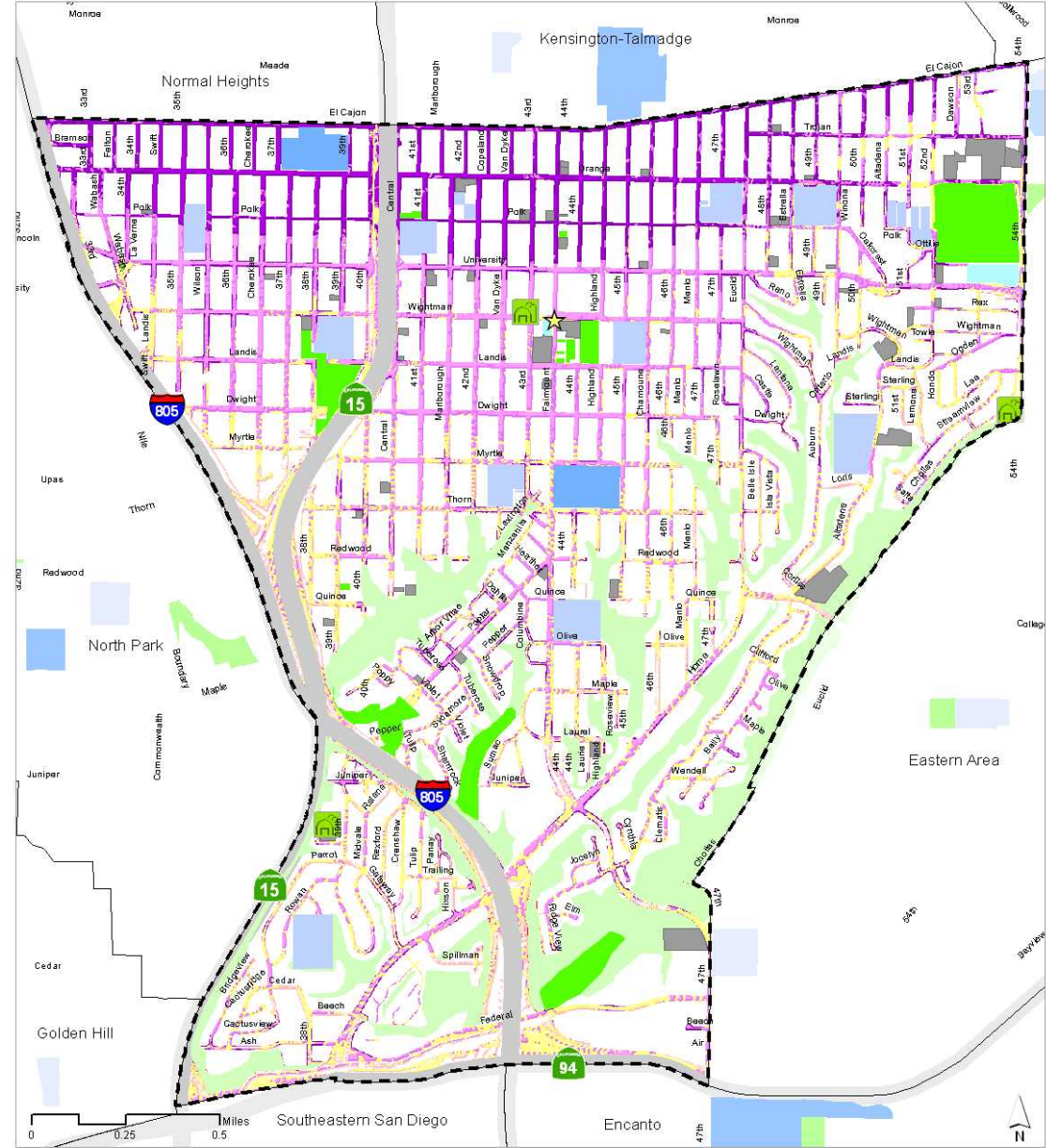
## Urban Forestry & Parks



- |  |  |  |
|--|--|--|
|  Missing Street Trees     |  City Heights Community Planning Area |  Schools            |
|  Excess Pavement          |  Canyons                              |  Elementary School  |
|  Community Service Center |  Parks                                |  Middle School      |
|  Community Gardens        |  Other Public Facilities              |  Senior High School |
|  |  |  Other School       |



# Candidate Corridors Stormwater

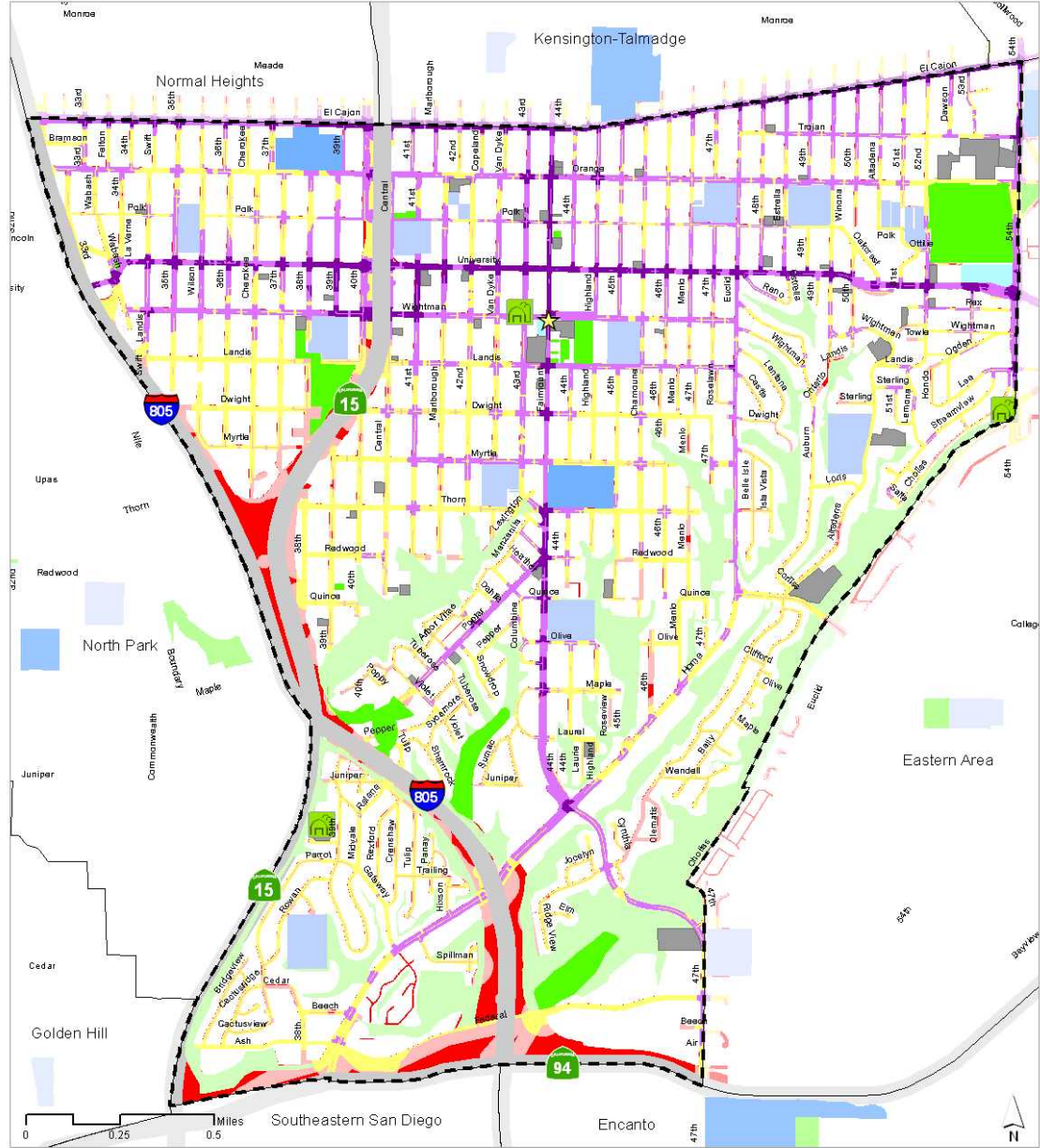


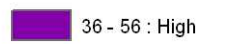

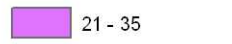

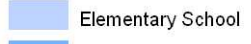
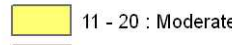

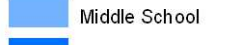
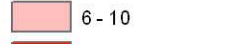
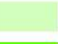
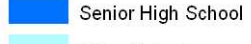
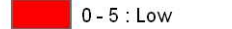


- |                  |                                      |                    |
|------------------|--------------------------------------|--------------------|
| 10 - 23 : High   | Community Service Center             | Schools            |
| 8 - 9            | Community Gardens                    | Elementary School  |
| 6 - 7 : Moderate | City Heights Community Planning Area | Middle School      |
| 4 - 5            | Canyons                              | Senior High School |
| 2 - 3 : Low      | Parks                                | Other School       |





# Candidate Corridors Connectivity



- |   |  |  |
|---|--|--|
|  36 - 56 : High     |  Community Service Center             | <b>Schools</b>   |
|  21 - 35            |  Community Gardens                    |  Elementary School  |
|  11 - 20 : Moderate |  City Heights Community Planning Area |  Middle School      |
|  6 - 10             |  Canyons                              |  Senior High School |
|  0 - 5 : Low        |  Parks                                |  Other School       |



# Prioritizing Exercise

- Show graphic
- Table top exercise that allows people to list top ten streets from the draft candidate corridors
- Per each category



CHUG #2 Prioritizing the Draft Candidate Corridors	
Priority	Street Name
#1	
#2	
#3	
#4	
#5	
#6	
#7	
#8	
#9	
#10	
#11	
#12	

\_\_\_\_\_  
Name

# Discussion

- Elements of the Plan: Urban Forestry, Stormwater, Connectivity, and Open Space
- Reviewing the Data
- Prioritizing by street type: Streets of Commerce, Multi-Modal Streets (Safe Routes to School, Transit, Parks, Retail), Green Streets, Native Streets



VEHICULAR FOCUS



TRANSIT FOCUS



URBAN FORESTRY FOCUS



BIKE FOCUS



WALKING FOCUS



STORMWATER FOCUS



# Creating a Toolbox

## CITY HEIGHTS URBAN GREENING PLAN

KTU+A

A MODULAR  
APPROACH  
TO  
RECLAIMING  
PUBLIC  
SPACE  
WITHIN OUR  
STREETS



STREET ZONES:

Typical Dimensions

Building Zone	Business / Street Activation Zone	Walking Zone	Furnishing Zone / Parkway Strip	Parking Lane	Buffer	Bike Facility	Buffer	Travel Lane	Travel Lane	Median
NA	4'-12'	5'-10'	2'-10'	7'-16'	2'	4'-6'	2'	11'-13'	11'-13'	4'-18'

VEHICULAR ELEMENTS

URBAN FORESTRY ELEMENTS

STORMWATER ELEMENTS

BIKE ELEMENTS

PEDESTRIAN ELEMENTS





# Walk Audit

- Looking at the Toolbox and identifying Key solutions
- Urban Forestry
- Storm Water
- Connectivity (Mobility)
- Open Space

# Building on Previous Work



## Legend

- Missing Sidewalk
- ☒ Difficult Crossing
- ☒ Illegal U Turn Issues
- ☒ Illegal Turn Issues
- ☒ Homeless Encampment
- ☒ Lack of Bicycle Infrastructure
- ☒ Sidewalk issues
- ☒ Cars Driving the Wrong Way
- ☒ Landscape issues
- ☒ Missing School Signs
- ☒ Insufficient lighting
- ☒ Criminal Activity
- ☒ Parking Issues
- ☒ Missing Curb Ramps
- Speeding

# Next Steps

- CHUG #2: May 11, 2013
- Walk Audit